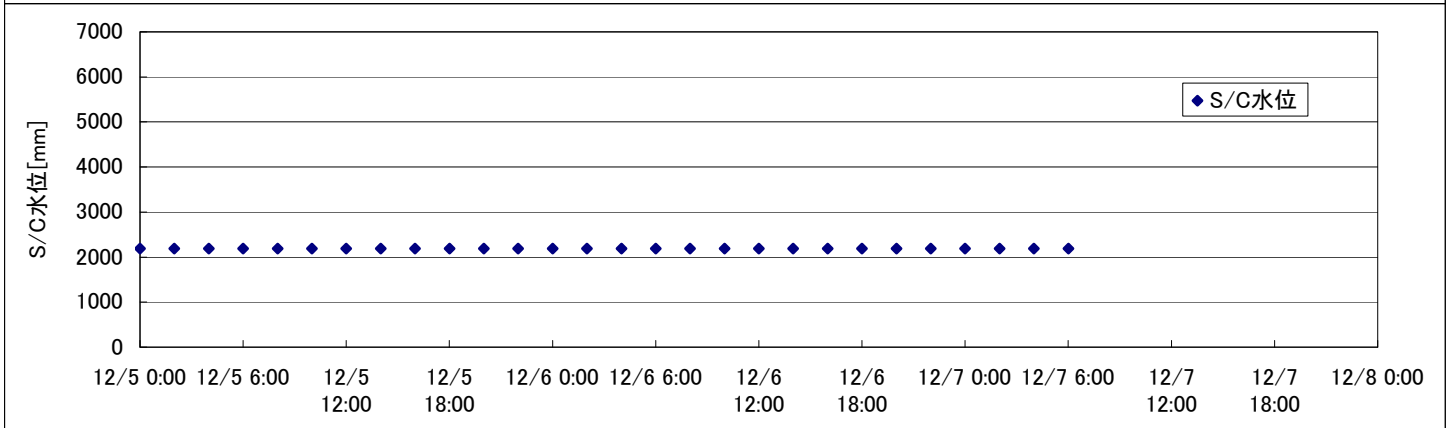
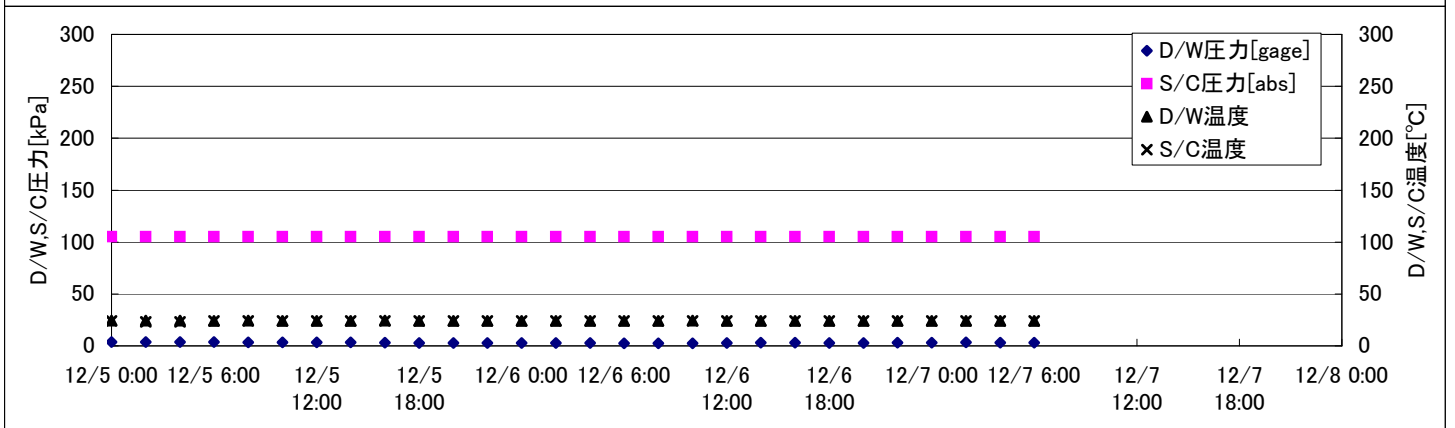
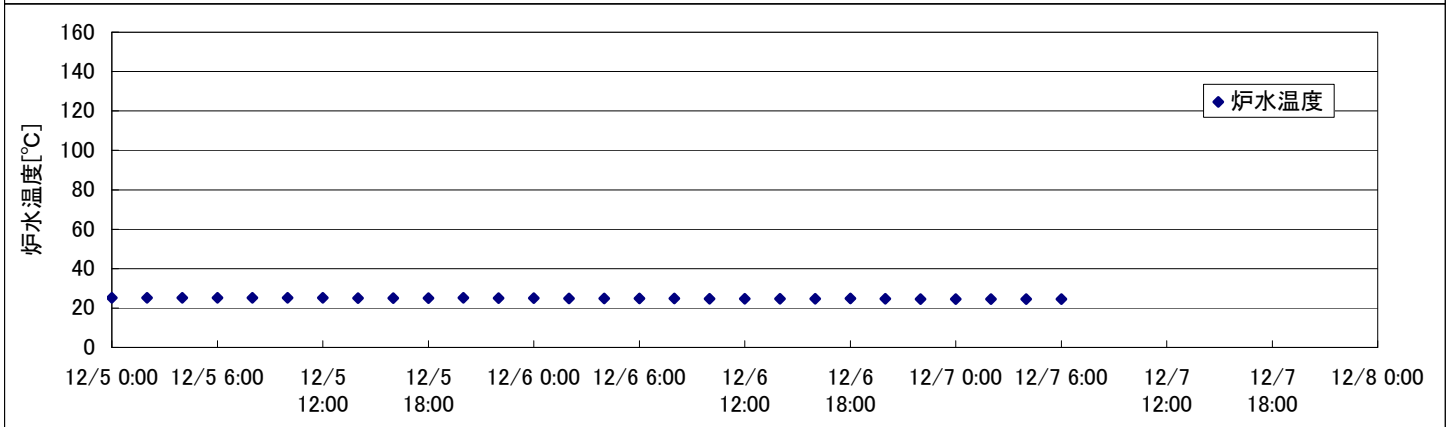
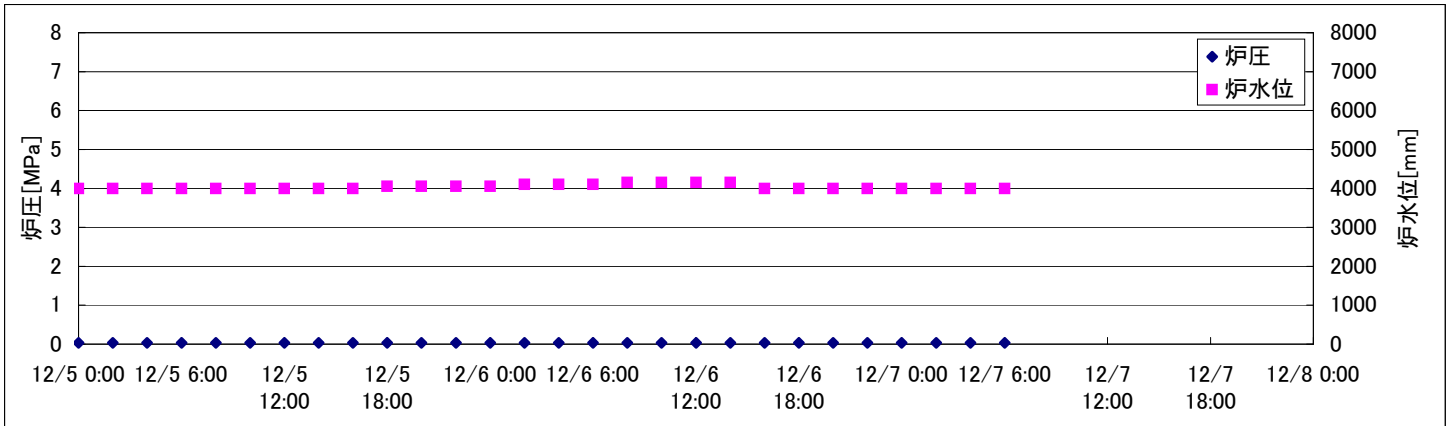
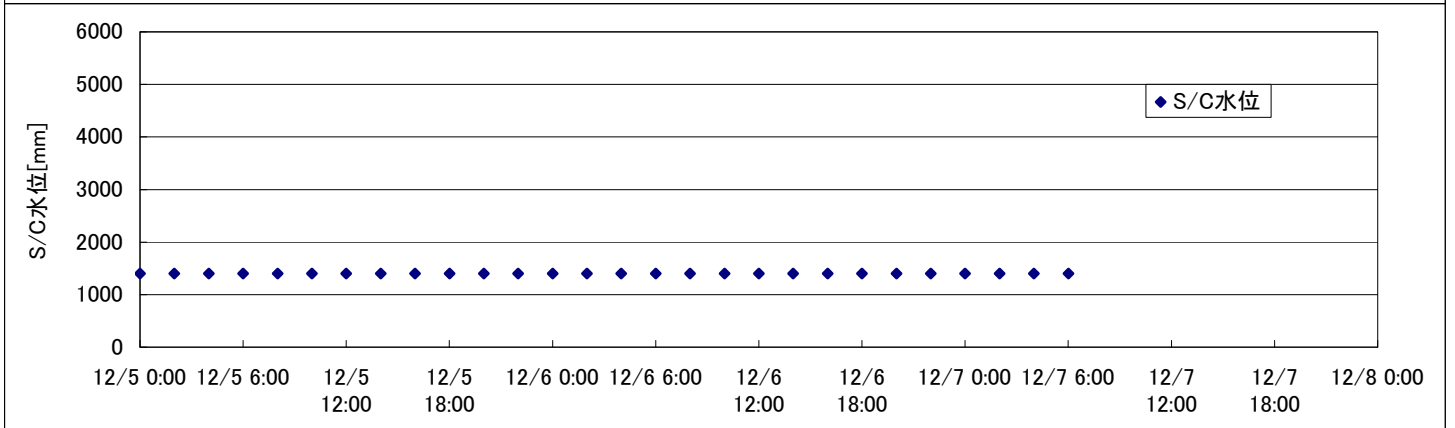
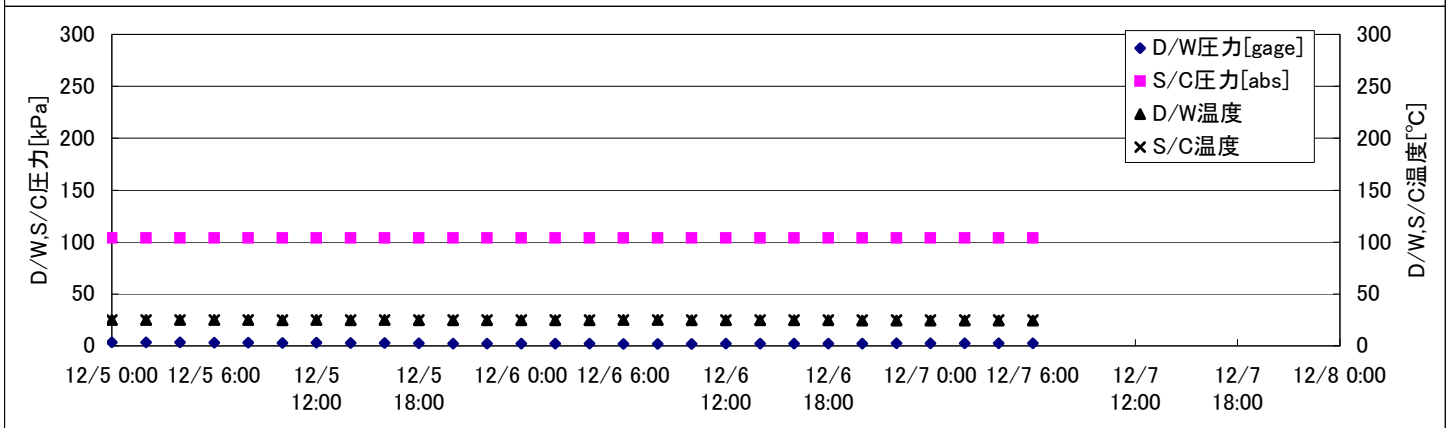
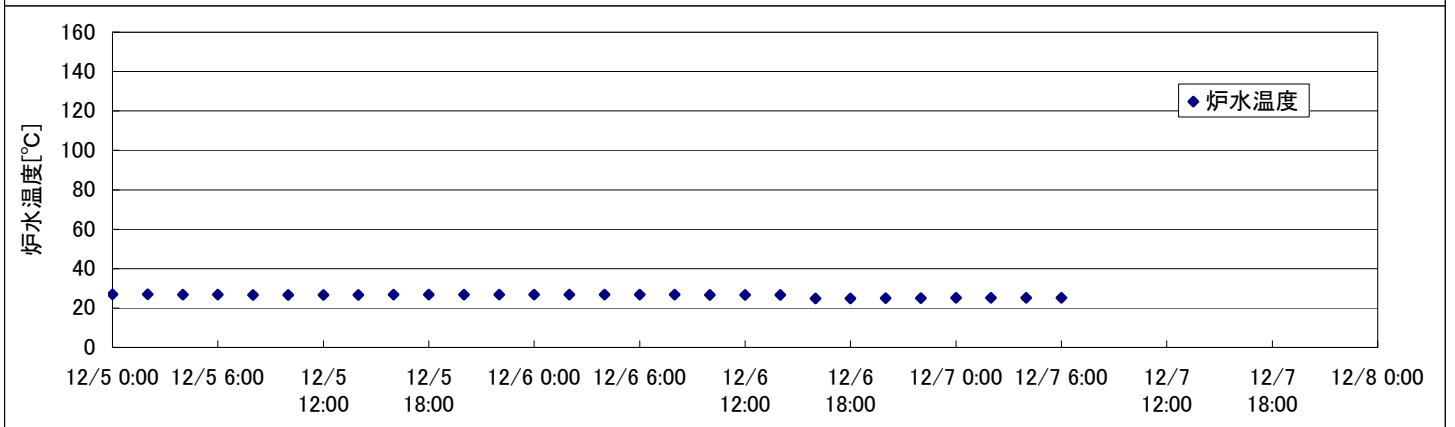
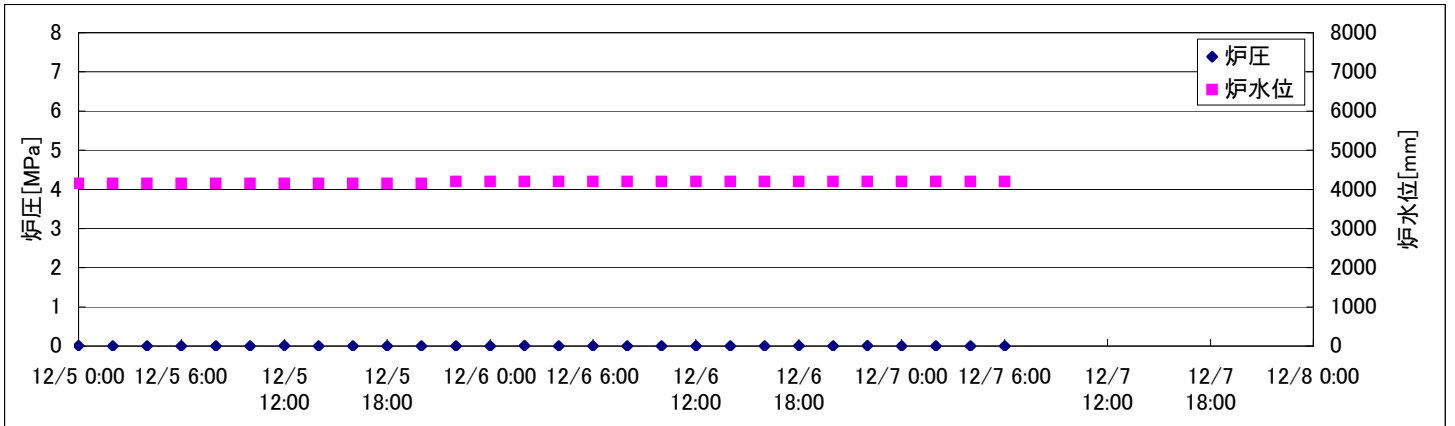


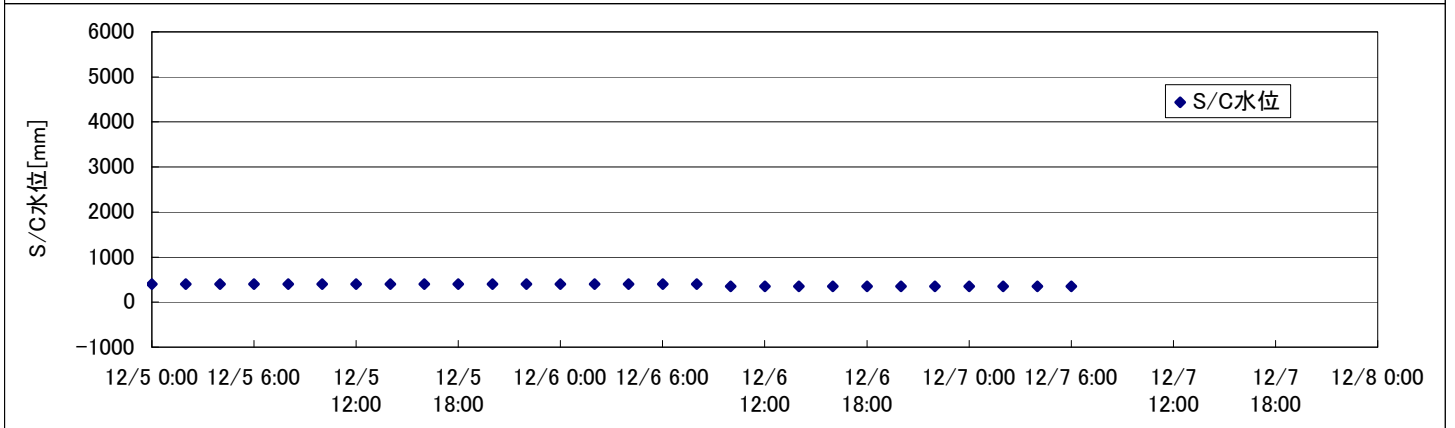
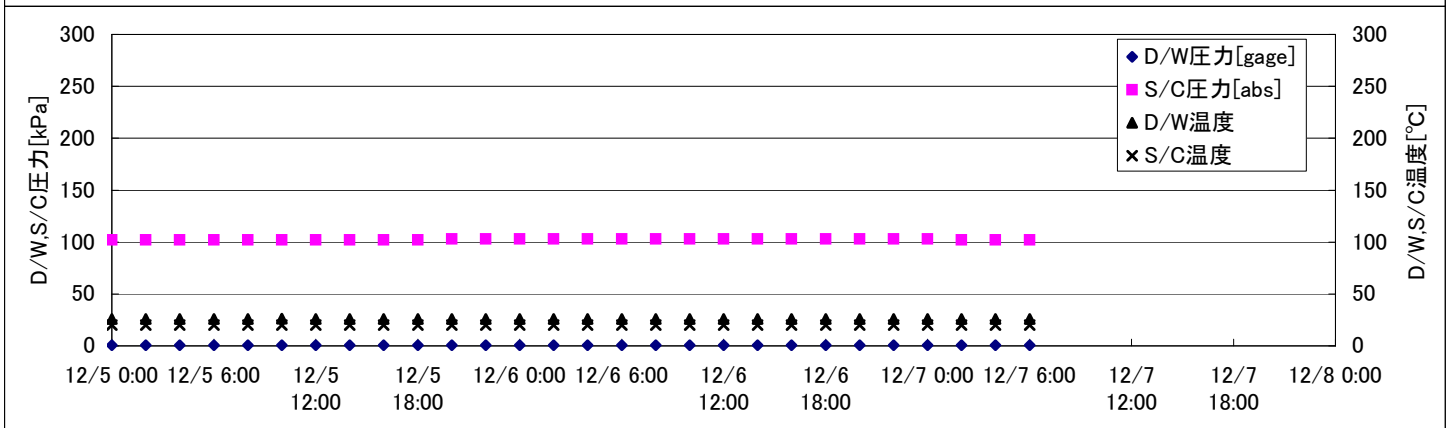
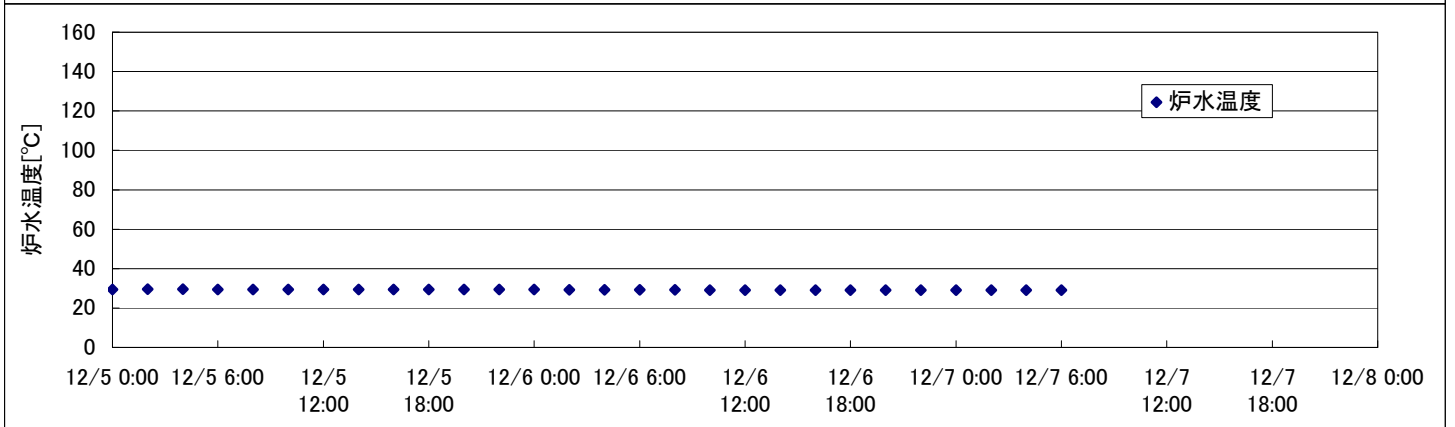
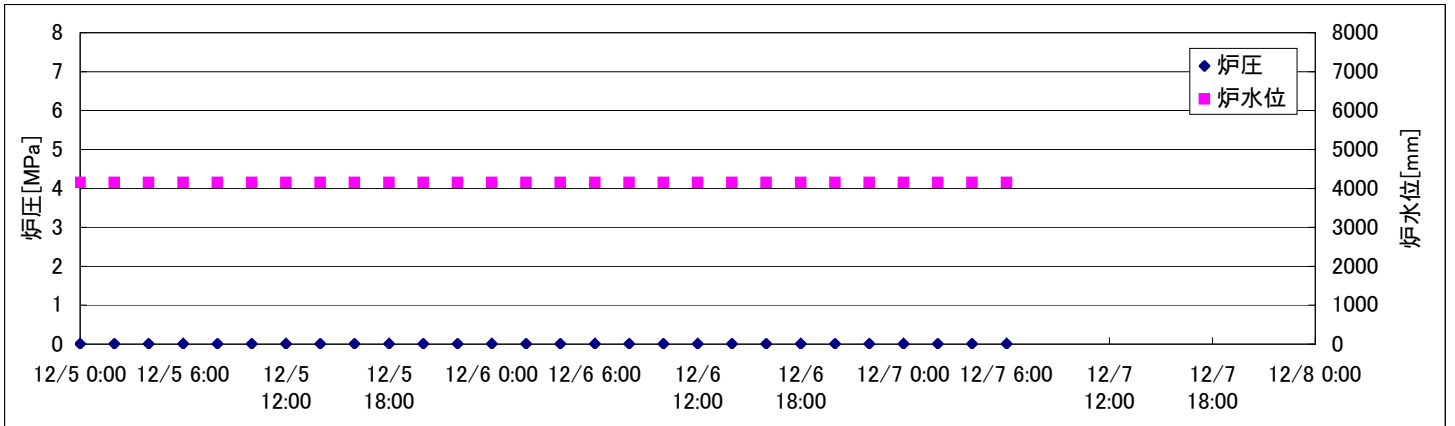
2F-1号機



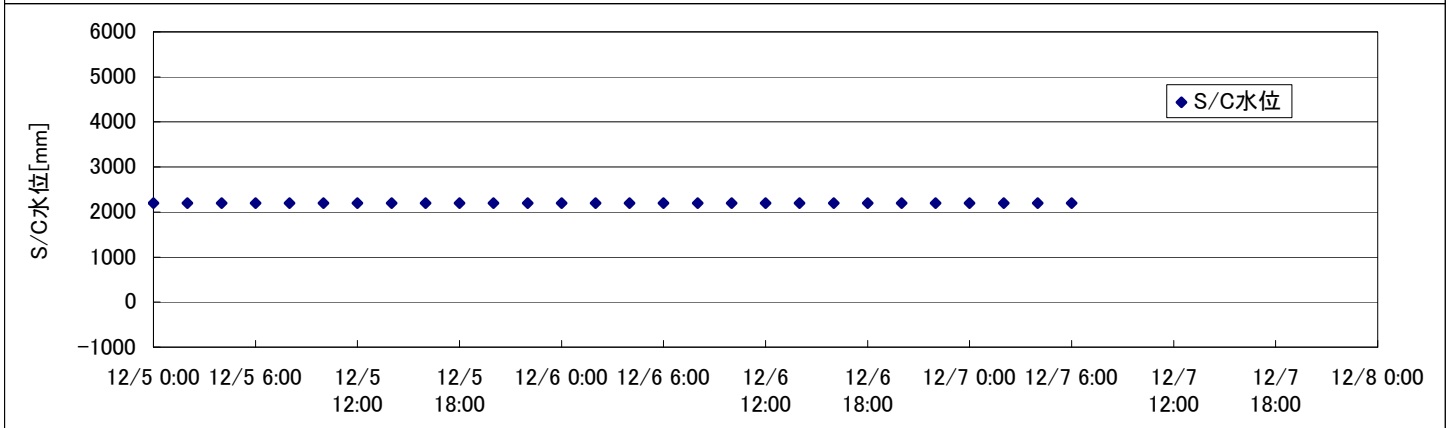
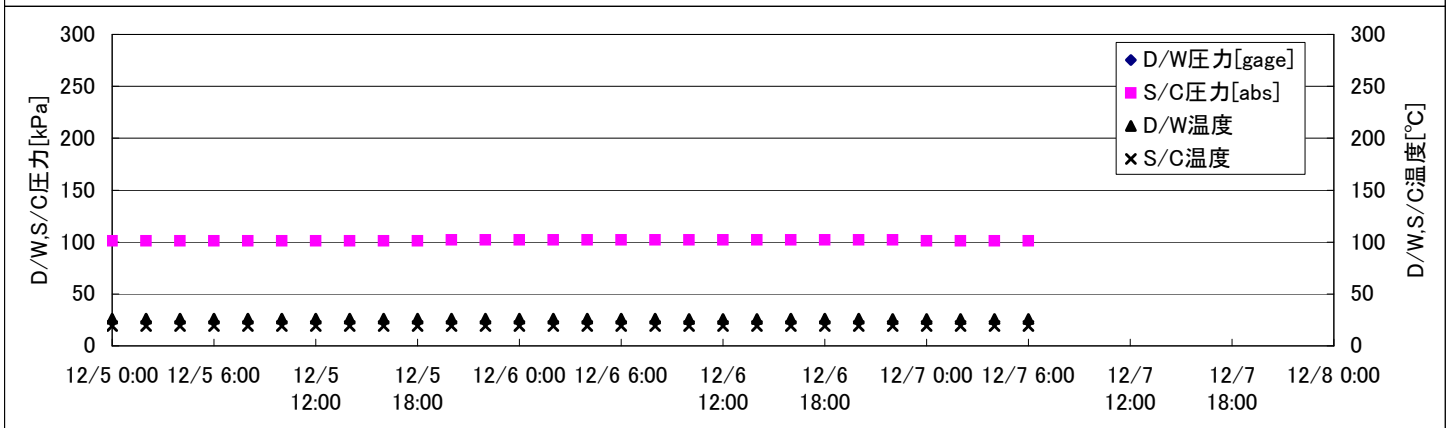
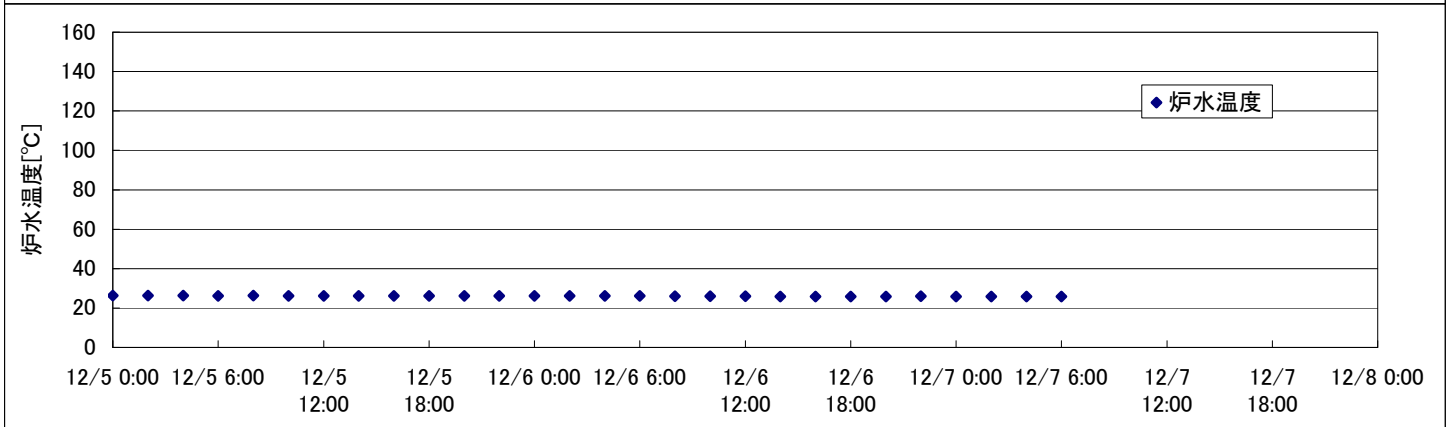
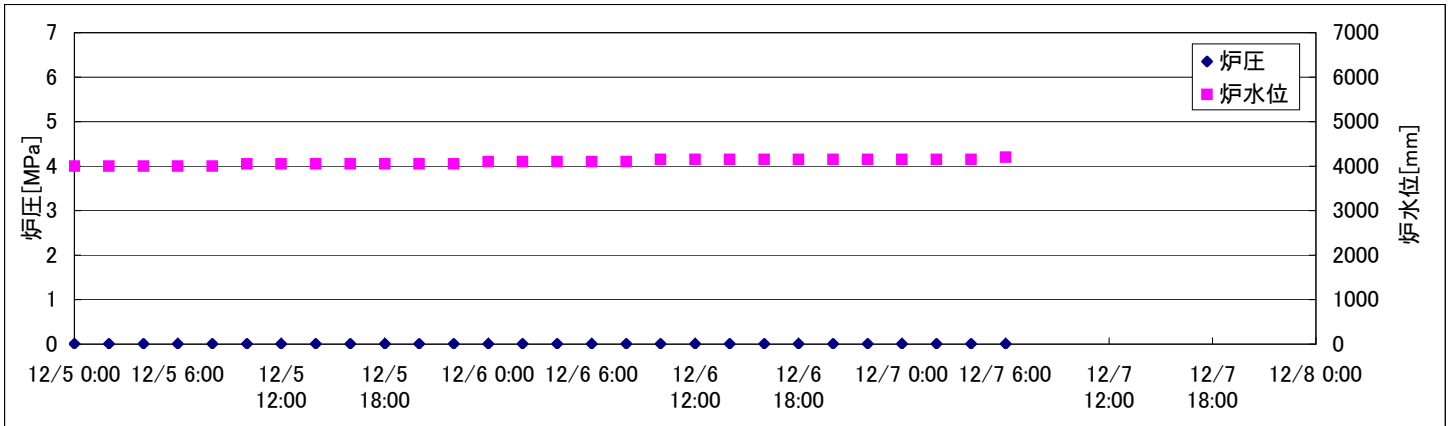
2F-2号機



2F-3号機



2F-4号機



2F-2号機

※燃料頂部(TAF)からの水位 = 炉水位 + 4200[mm]

時間	炉圧 [MPa (gage)]	炉水位 [mm] 停止時	炉水温度[°C]	D/W圧力 [kPa(gage)]	D/W温度 [°C]	S/C圧力 [kPa(abs)]	S/C水位 [mm]	S/C温度 [°C]
2011/12/5 0:00	0.01	4150	26.9	3	25.1	104	1400	25
2011/12/5 2:00	0.00	4150	26.9	3	24.9	104	1400	25
2011/12/5 4:00	0.00	4150	26.8	3	24.9	104	1400	25
2011/12/5 6:00	0.00	4150	26.8	3	24.9	104	1400	25
2011/12/5 8:00	0.00	4150	26.7	3	24.9	104	1400	25
2011/12/5 10:00	0.00	4150	26.7	3	24.8	104	1400	25
2011/12/5 12:00	0.01	4150	26.7	3	24.9	104	1400	25
2011/12/5 14:00	0.00	4150	26.7	3	24.8	104	1400	25
2011/12/5 16:00	0.00	4150	26.8	3	24.9	104	1400	25
2011/12/5 18:00	0.00	4150	26.8	3	24.8	104	1400	25
2011/12/5 20:00	0.00	4150	26.8	2	24.8	104	1400	25
2011/12/5 22:00	0.00	4200	26.8	2	24.8	104	1400	25
2011/12/6 0:00	0.00	4200	26.8	2	24.8	104	1400	25
2011/12/6 2:00	0.01	4200	26.8	2	24.7	104	1400	25
2011/12/6 4:00	0.00	4200	26.8	2	24.7	104	1400	25
2011/12/6 6:00	0.00	4200	26.8	2	24.9	104	1400	25
2011/12/6 8:00	0.00	4200	26.8	2	24.9	104	1400	25
2011/12/6 10:00	0.00	4200	26.7	2	24.8	104	1400	25
2011/12/6 12:00	0.00	4200	26.7	2	24.8	104	1400	25
2011/12/6 14:00	0.00	4200	26.7	2	24.8	104	1400	25
2011/12/6 16:00	0.00	4200	24.8	2	24.7	104	1400	25
2011/12/6 18:00	0.01	4200	24.8	2	24.7	104	1400	25
2011/12/6 20:00	0.00	4200	25.0	2	24.4	104	1400	25
2011/12/6 22:00	0.01	4200	25.0	2	24.3	104	1400	25
2011/12/7 0:00	0.00	4200	25.1	3	24.4	104	1400	25
2011/12/7 2:00	0.00	4200	25.1	3	24.3	104	1400	25
2011/12/7 4:00	0.00	4200	25.1	3	24.3	104	1400	25
2011/12/7 6:00	0.00	4200	25.1	3	24.3	104	1400	25
2011/12/7 8:00								
2011/12/7 10:00								
2011/12/7 12:00								
2011/12/7 14:00								
2011/12/7 16:00								
2011/12/7 18:00								
2011/12/7 20:00								
2011/12/7 22:00								
2011/12/8 0:00								

12/6 14:44 RHRポンプ(A) 停止
15:11 RHRポンプ(B) 起動

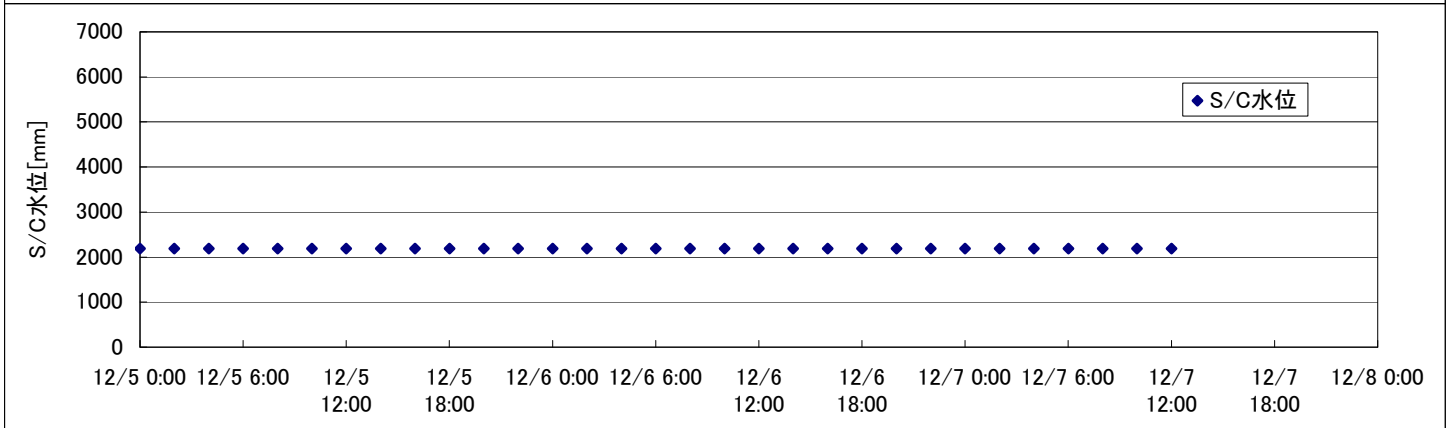
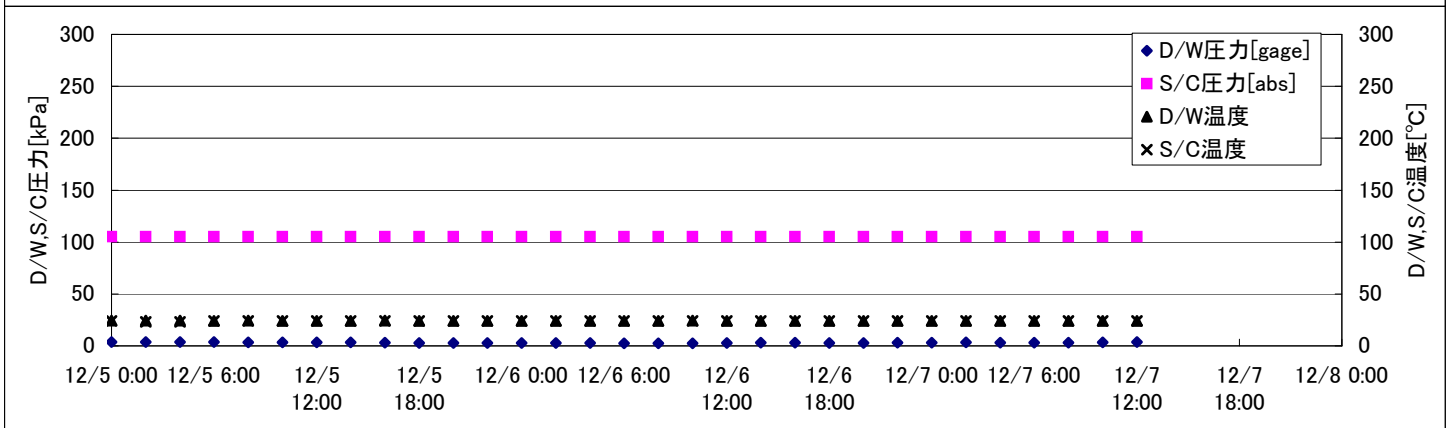
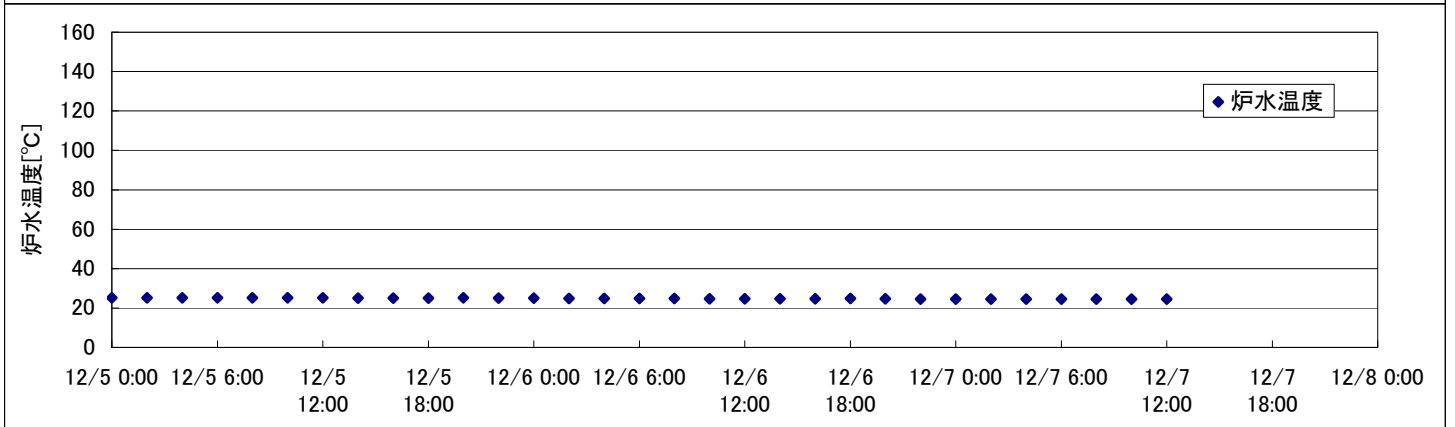
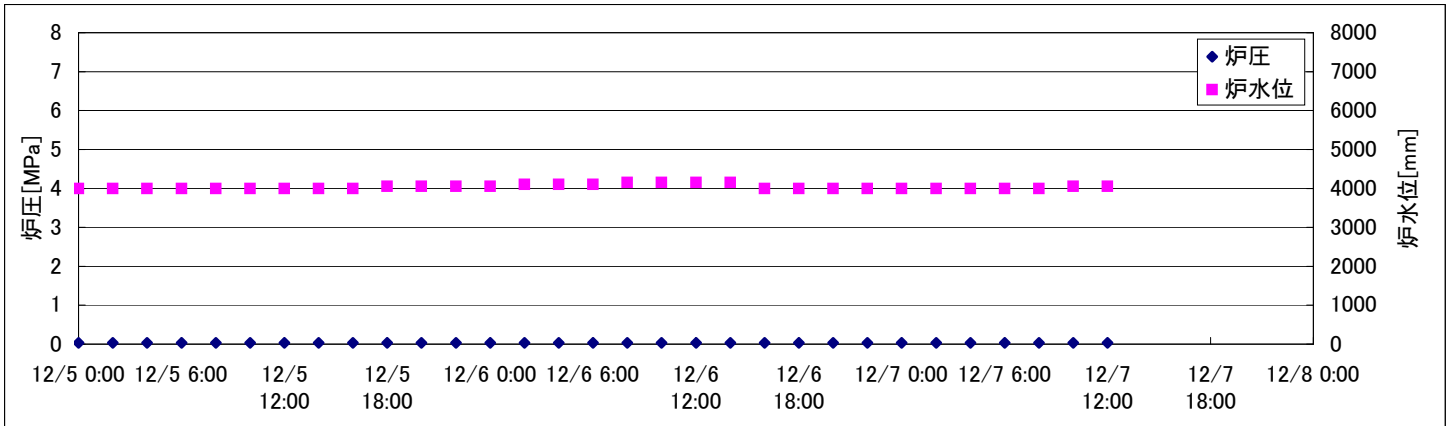
2F-4号機

※燃料頂部(TAF)からの水位 = 炉水位 + 4200[mm]

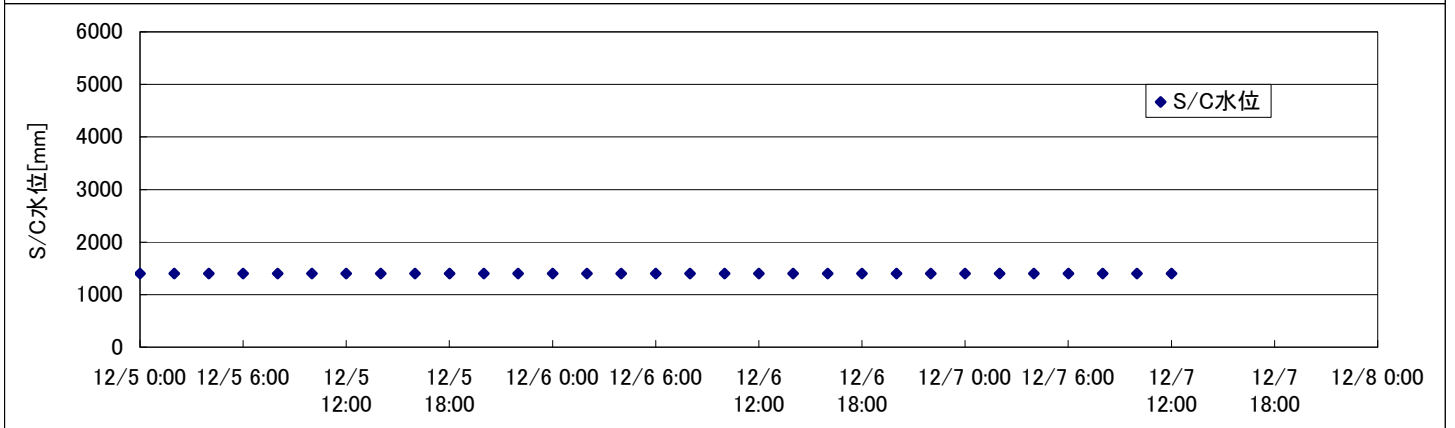
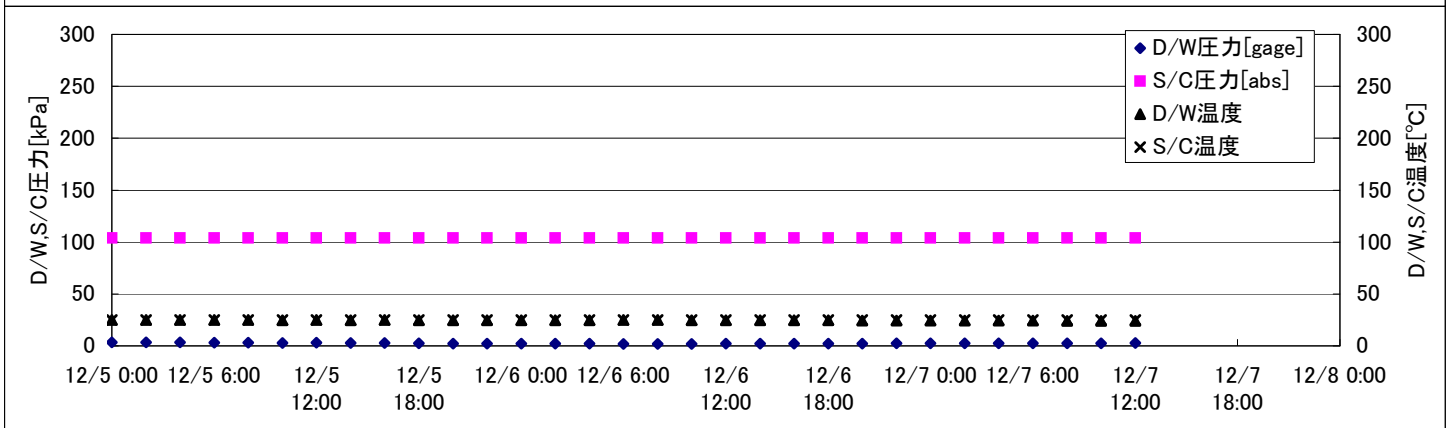
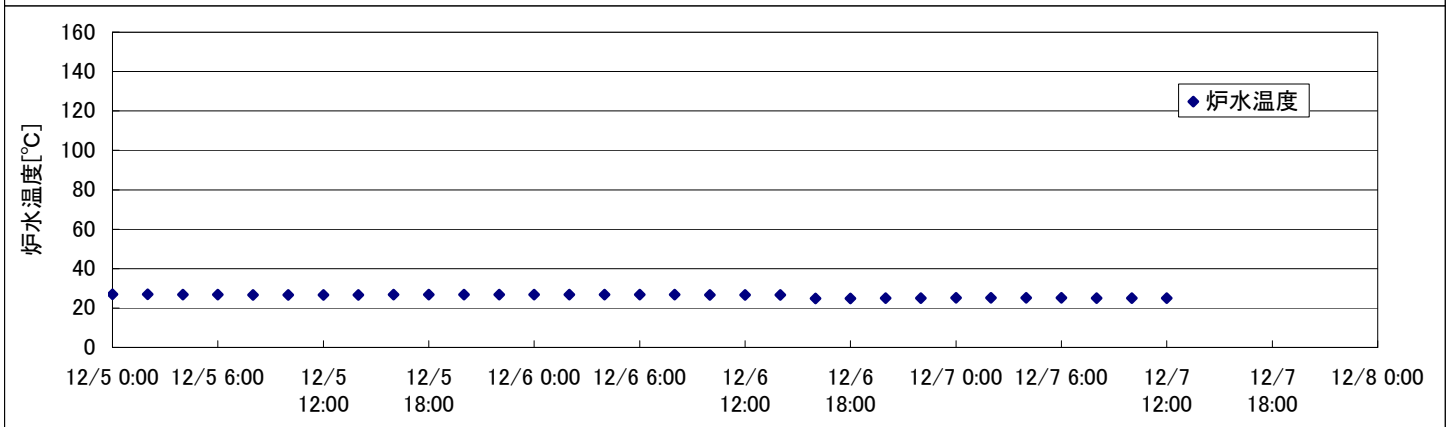
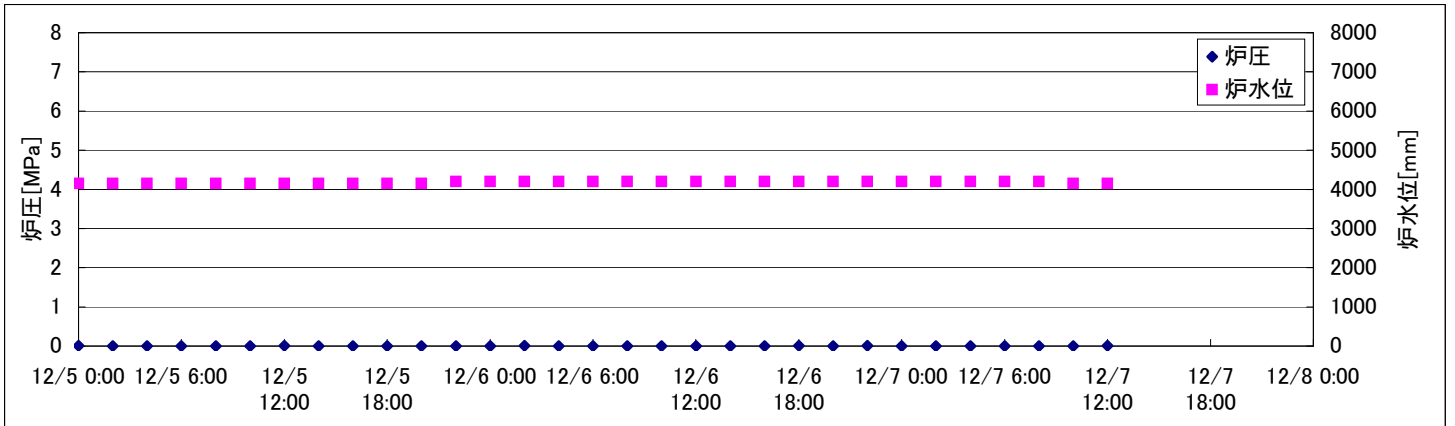
時間	炉圧 [MPa (gage)]	炉水位 [mm] 停止時	炉水温度[°C]	D/W圧力 [kPa(gage)]	D/W温度 [°C]	S/C圧力 [kPa(abs)]	S/C水位 [mm]	S/C温度 [°C]
2011/12/5 0:00	0.01	4000	26.3		26.1	101	2200	19
2011/12/5 2:00	0.01	4000	26.3		26.1	101	2200	19
2011/12/5 4:00	0.01	4000	26.3		26.1	101	2200	19
2011/12/5 6:00	0.01	4000	26.2		26.1	101	2200	19
2011/12/5 8:00	0.01	4000	26.3		26.1	101	2200	19
2011/12/5 10:00	0.01	4050	26.2		26.2	101	2200	19
2011/12/5 12:00	0.01	4050	26.2		26.2	101	2200	19
2011/12/5 14:00	0.01	4050	26.2		26.2	101	2200	19
2011/12/5 16:00	0.01	4050	26.2		26.2	101	2200	19
2011/12/5 18:00	0.01	4050	26.2		26.2	101	2200	19
2011/12/5 20:00	0.01	4050	26.2		26.2	102	2200	19
2011/12/5 22:00	0.01	4050	26.2		26.2	102	2200	19
2011/12/6 0:00	0.01	4100	26.2		26.1	102	2200	19
2011/12/6 2:00	0.01	4100	26.2		26.1	102	2200	19
2011/12/6 4:00	0.01	4100	26.2		26.1	102	2200	19
2011/12/6 6:00	0.01	4100	26.1		26.1	102	2200	19
2011/12/6 8:00	0.01	4100	26.0		26.1	102	2200	19
2011/12/6 10:00	0.01	4150	26.0		26.0	102	2200	19
2011/12/6 12:00	0.01	4150	26.0		26.0	102	2200	19
2011/12/6 14:00	0.01	4150	25.9		26.0	102	2200	19
2011/12/6 16:00	0.01	4150	25.9		26.1	102	2200	19
2011/12/6 18:00	0.01	4150	25.9		26.1	102	2200	19
2011/12/6 20:00	0.01	4150	25.9		26.1	102	2200	19
2011/12/6 22:00	0.01	4150	26.0		25.9	102	2200	19
2011/12/7 0:00	0.01	4150	25.9		26.0	101	2200	19
2011/12/7 2:00	0.01	4150	25.9		26.0	101	2200	19
2011/12/7 4:00	0.01	4150	25.9		26.0	101	2200	19
2011/12/7 6:00	0.01	4200	25.9		26.0	101	2200	19
2011/12/7 8:00								
2011/12/7 10:00								
2011/12/7 12:00								
2011/12/7 14:00								
2011/12/7 16:00								
2011/12/7 18:00								
2011/12/7 20:00								
2011/12/7 22:00								
2011/12/8 0:00								

D/W圧力について
 ・パーソナルエアロックドア開放中であるため、9/6 10:00 より記載せず

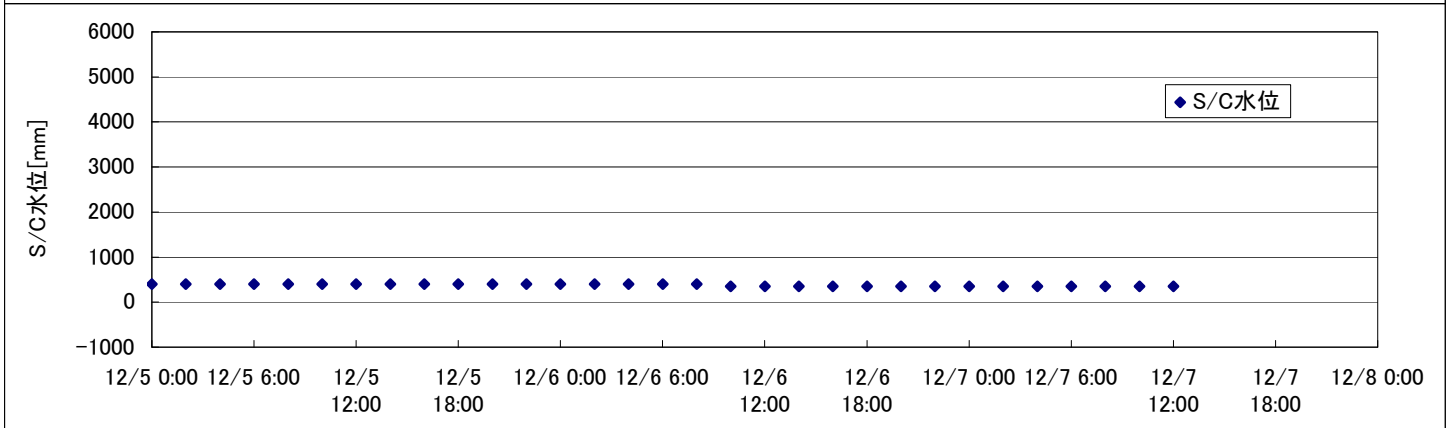
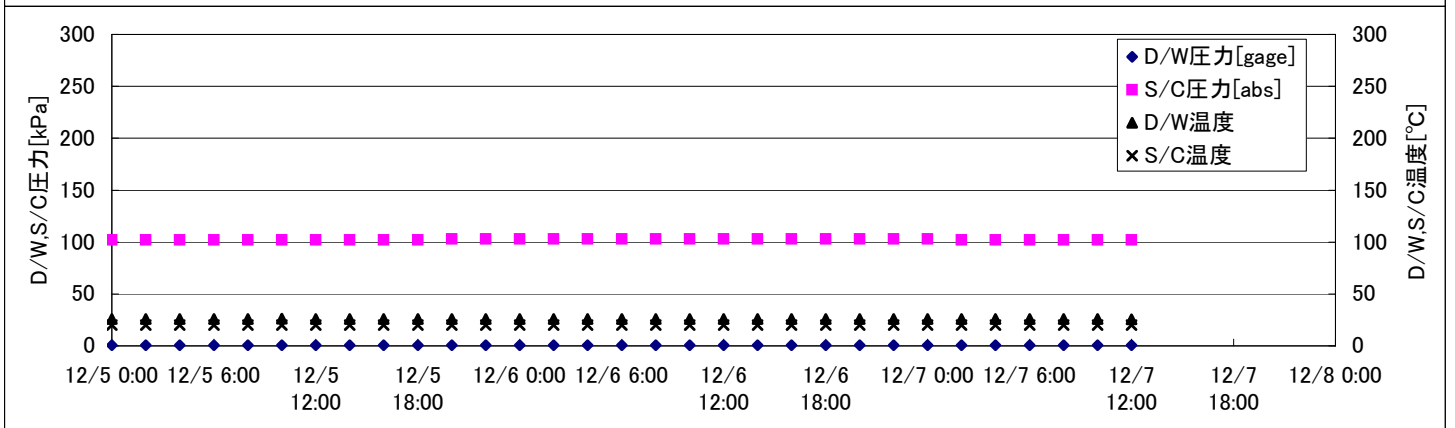
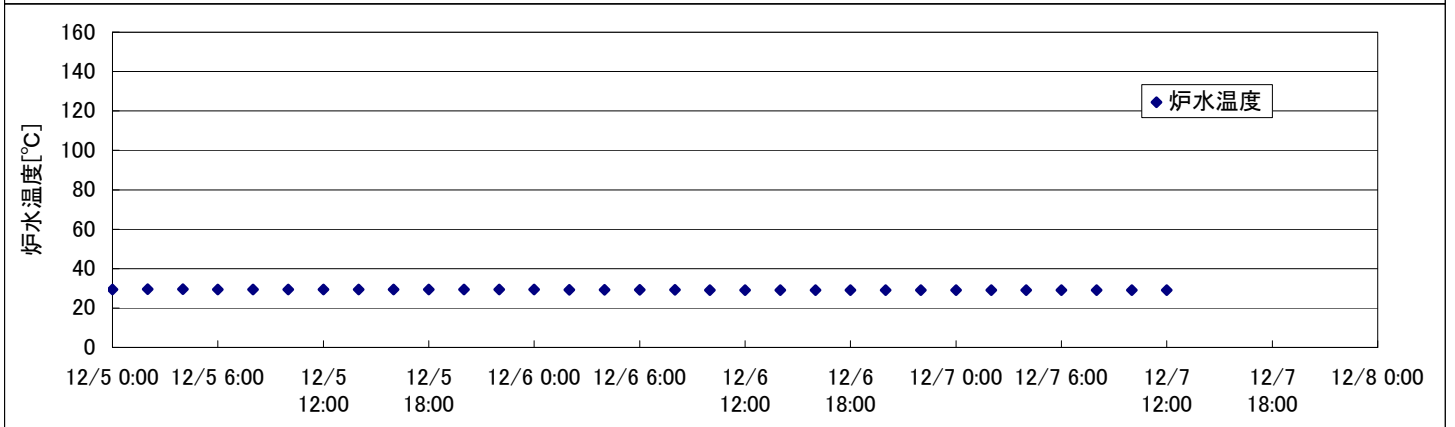
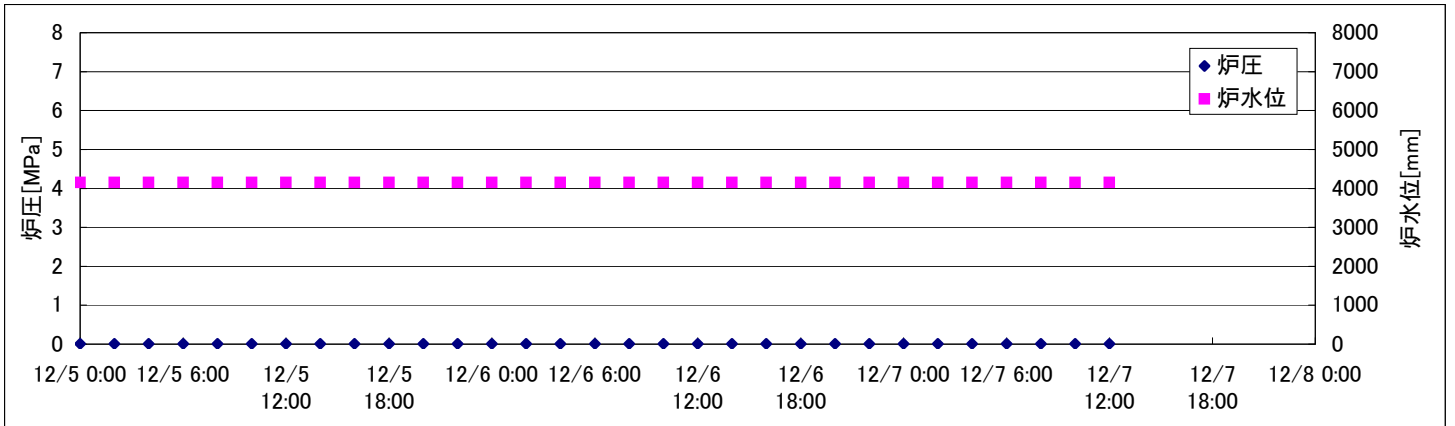
2F-1号機



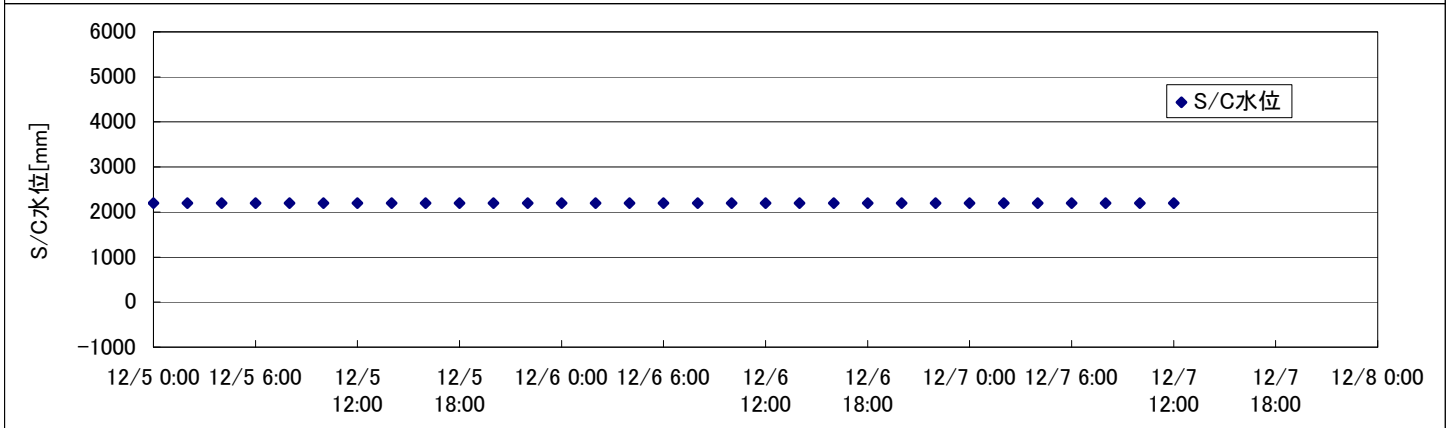
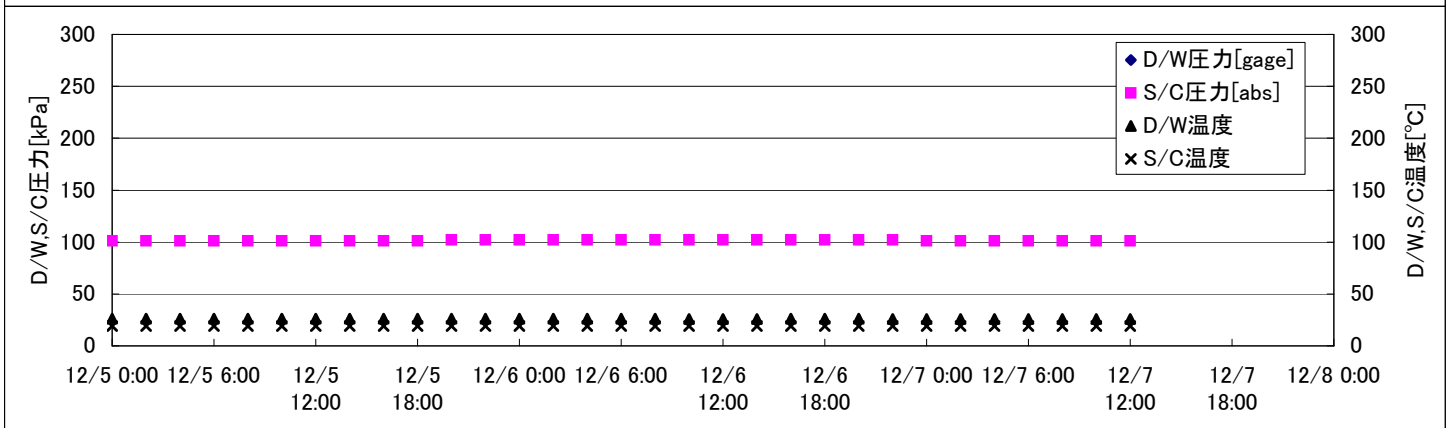
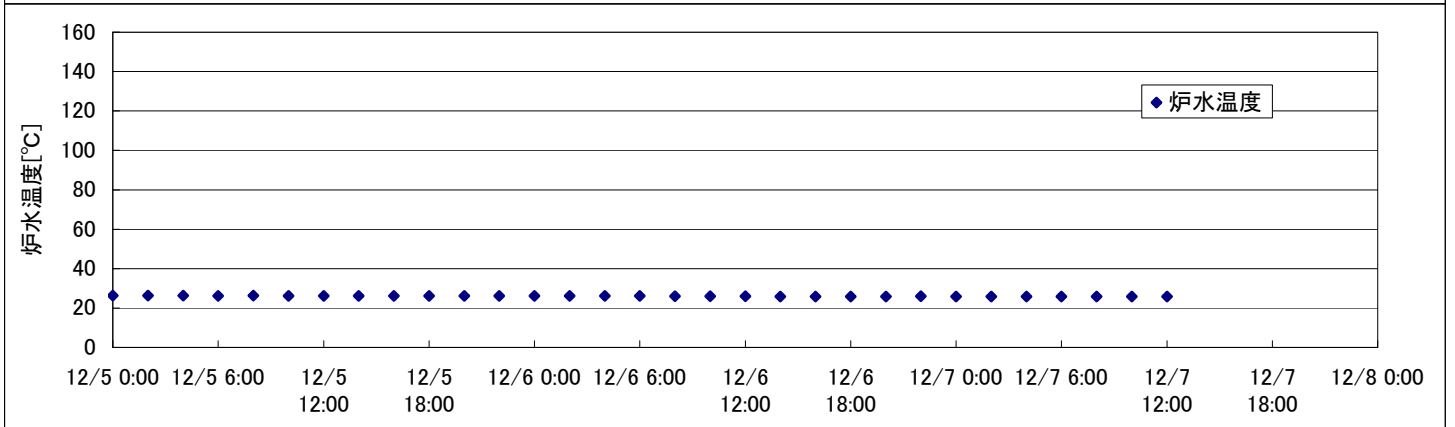
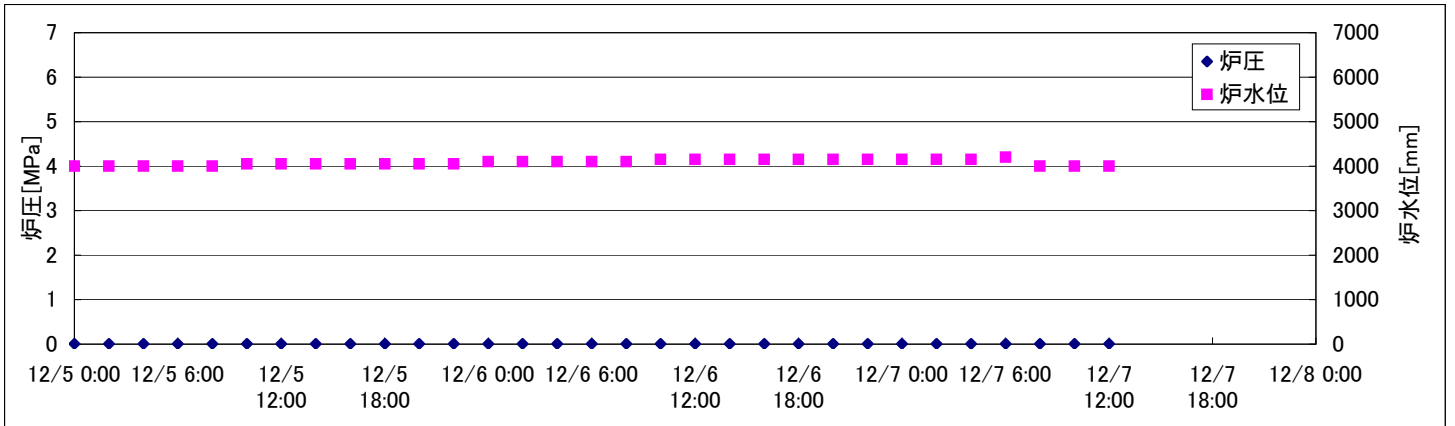
2F-2号機



2F-3号機



2F-4号機



2F-4号機

※燃料頂部(TAF)からの水位 = 炉水位 + 4200[mm]

時間	炉圧 [MPa (gage)]	炉水位 [mm] 停止時	炉水温度[°C]	D/W圧力 [kPa(gage)]	D/W温度 [°C]	S/C圧力 [kPa(abs)]	S/C水位 [mm]	S/C温度 [°C]
2011/12/5 0:00	0.01	4000	26.3		26.1	101	2200	19
2011/12/5 2:00	0.01	4000	26.3		26.1	101	2200	19
2011/12/5 4:00	0.01	4000	26.3		26.1	101	2200	19
2011/12/5 6:00	0.01	4000	26.2		26.1	101	2200	19
2011/12/5 8:00	0.01	4000	26.3		26.1	101	2200	19
2011/12/5 10:00	0.01	4050	26.2		26.2	101	2200	19
2011/12/5 12:00	0.01	4050	26.2		26.2	101	2200	19
2011/12/5 14:00	0.01	4050	26.2		26.2	101	2200	19
2011/12/5 16:00	0.01	4050	26.2		26.2	101	2200	19
2011/12/5 18:00	0.01	4050	26.2		26.2	101	2200	19
2011/12/5 20:00	0.01	4050	26.2		26.2	102	2200	19
2011/12/5 22:00	0.01	4050	26.2		26.2	102	2200	19
2011/12/6 0:00	0.01	4100	26.2		26.1	102	2200	19
2011/12/6 2:00	0.01	4100	26.2		26.1	102	2200	19
2011/12/6 4:00	0.01	4100	26.2		26.1	102	2200	19
2011/12/6 6:00	0.01	4100	26.1		26.1	102	2200	19
2011/12/6 8:00	0.01	4100	26.0		26.1	102	2200	19
2011/12/6 10:00	0.01	4150	26.0		26.0	102	2200	19
2011/12/6 12:00	0.01	4150	26.0		26.0	102	2200	19
2011/12/6 14:00	0.01	4150	25.9		26.0	102	2200	19
2011/12/6 16:00	0.01	4150	25.9		26.1	102	2200	19
2011/12/6 18:00	0.01	4150	25.9		26.1	102	2200	19
2011/12/6 20:00	0.01	4150	25.9		26.1	102	2200	19
2011/12/6 22:00	0.01	4150	26.0		25.9	102	2200	19
2011/12/7 0:00	0.01	4150	25.9		26.0	101	2200	19
2011/12/7 2:00	0.01	4150	25.9		26.0	101	2200	19
2011/12/7 4:00	0.01	4150	25.9		26.0	101	2200	19
2011/12/7 6:00	0.01	4200	25.9		26.0	101	2200	19
2011/12/7 8:00	0.01	4000	25.9		25.8	101	2200	19
2011/12/7 10:00	0.01	4000	25.8		25.8	101	2200	19
2011/12/7 12:00	0.01	4000	25.8		25.8	101	2200	19
2011/12/7 14:00								
2011/12/7 16:00								
2011/12/7 18:00								
2011/12/7 20:00								
2011/12/7 22:00								
2011/12/8 0:00								

D/W圧力について
 ・パーソナルエアロックドア開放中であるため、9/6 10:00 より記載せず