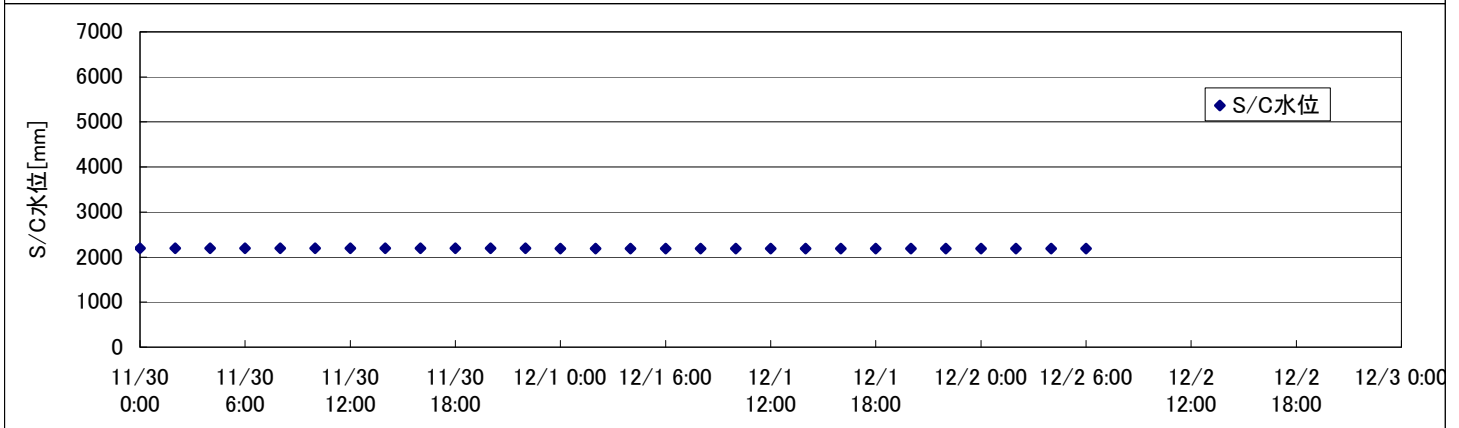
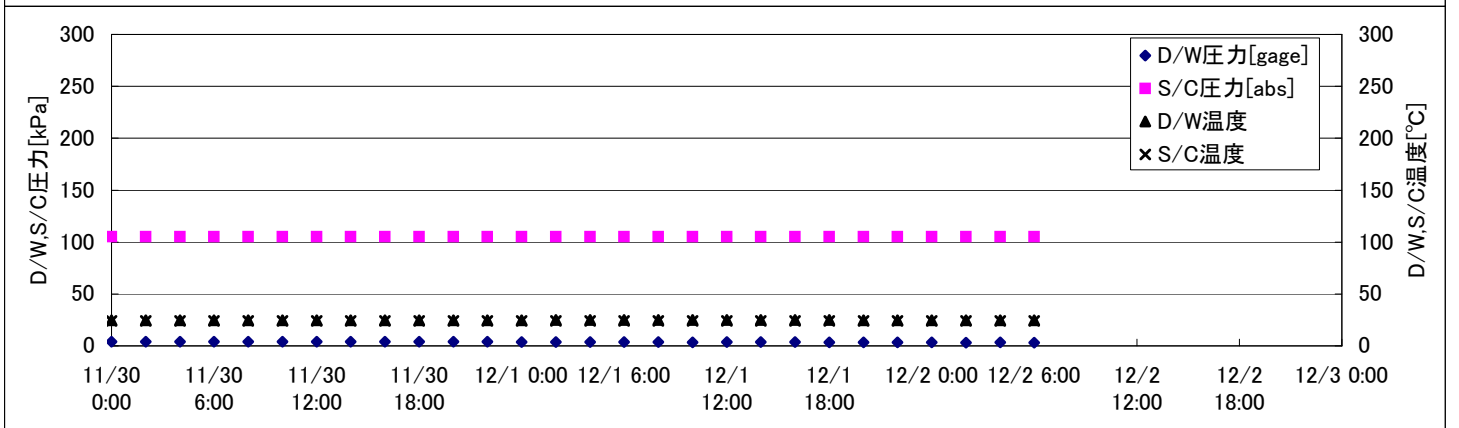
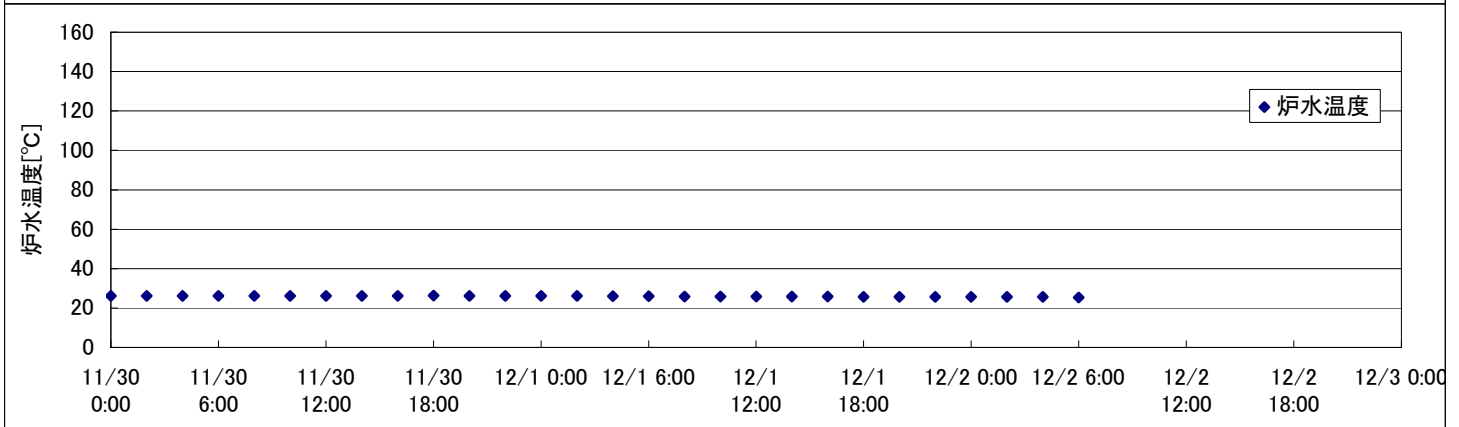
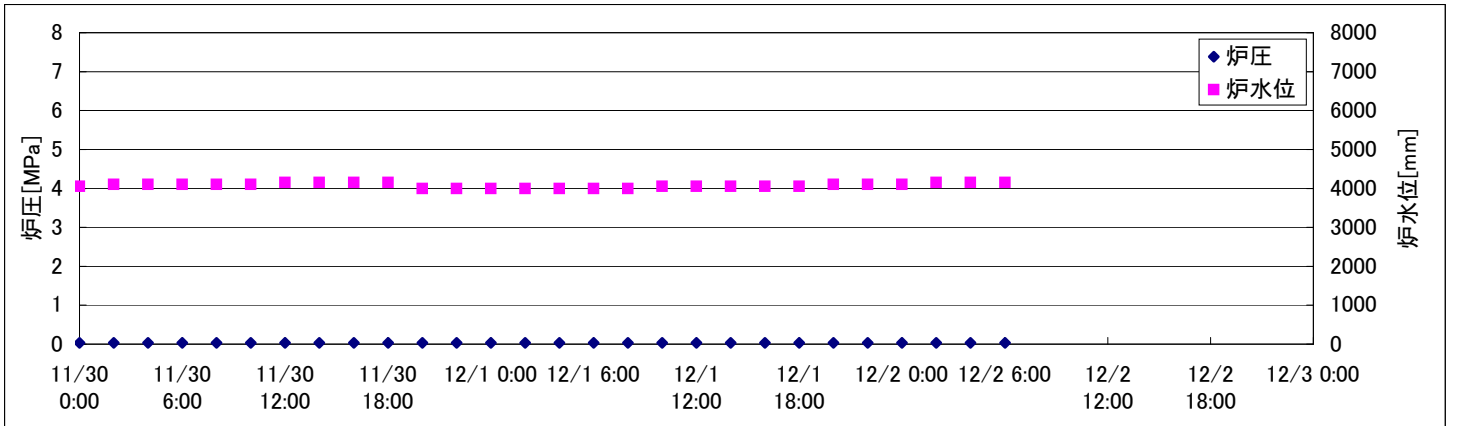
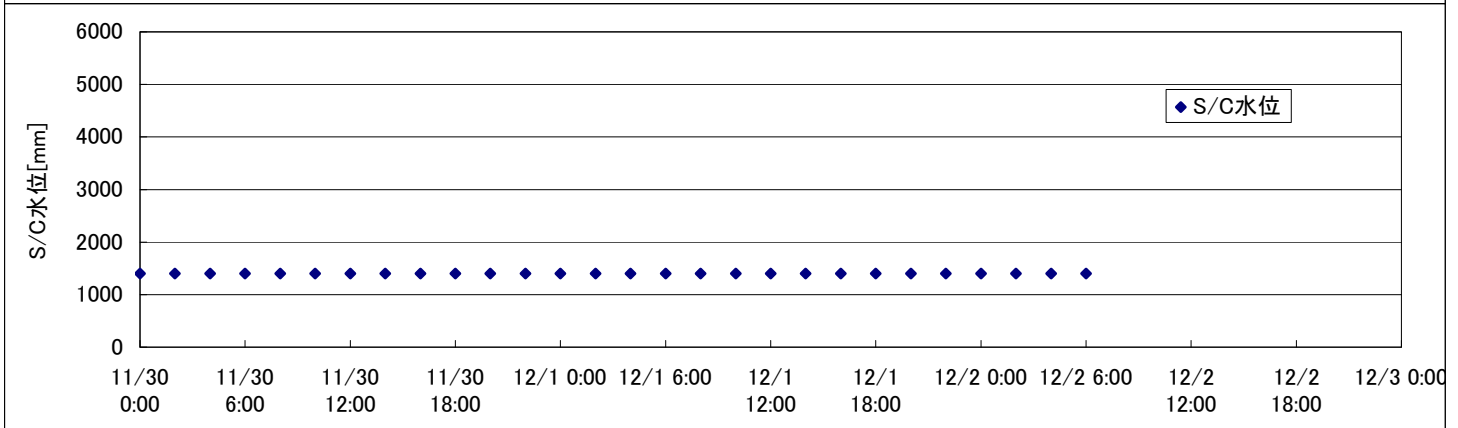
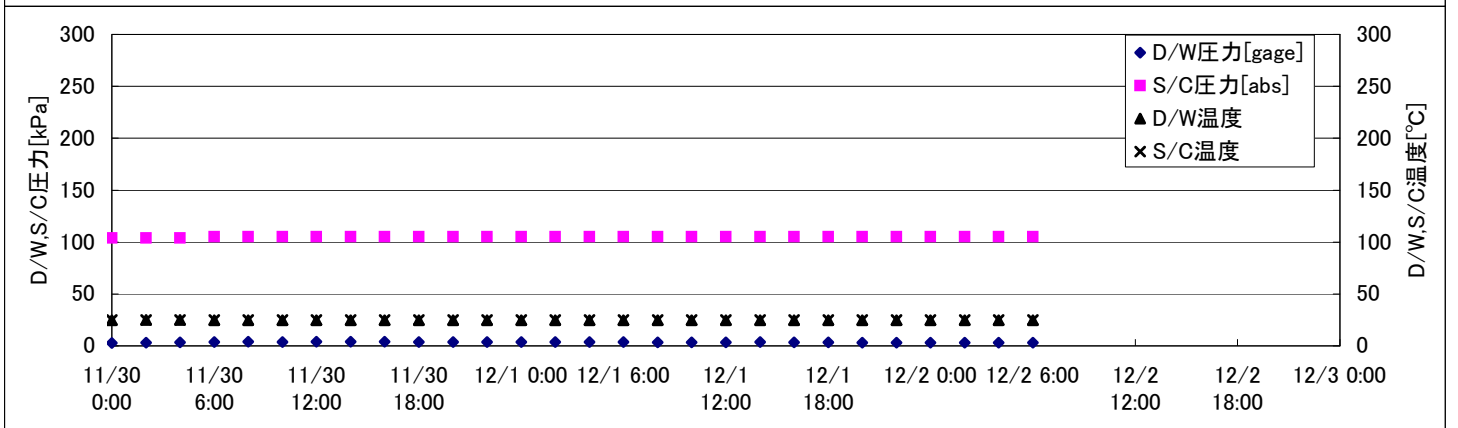
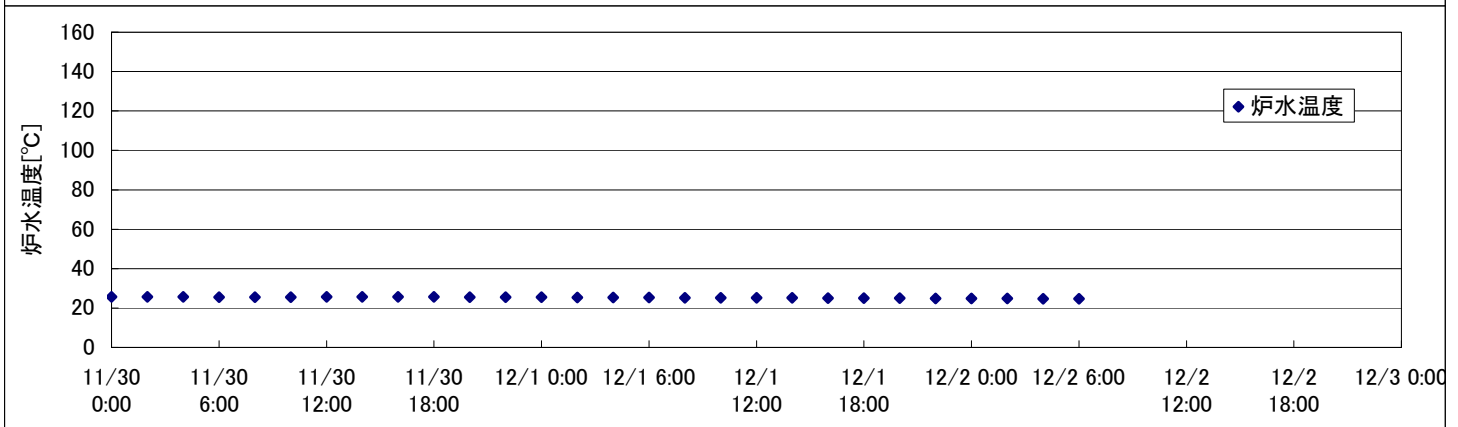
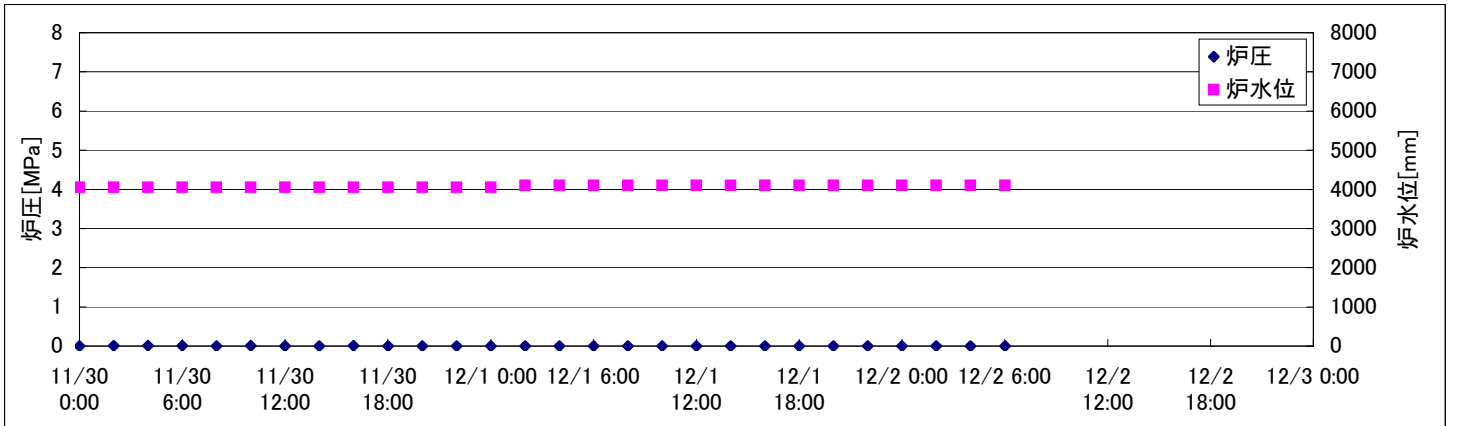


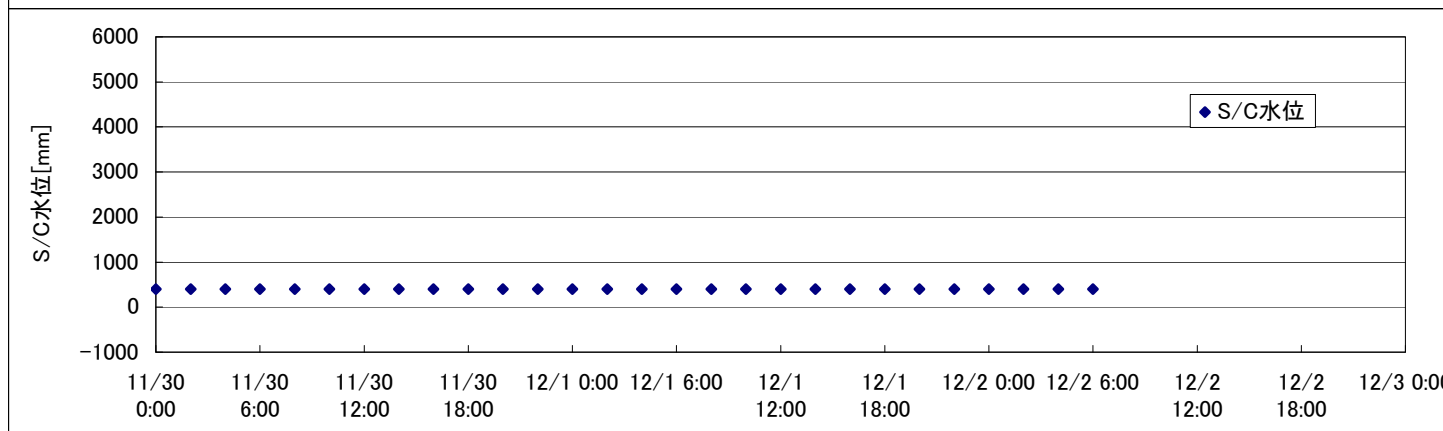
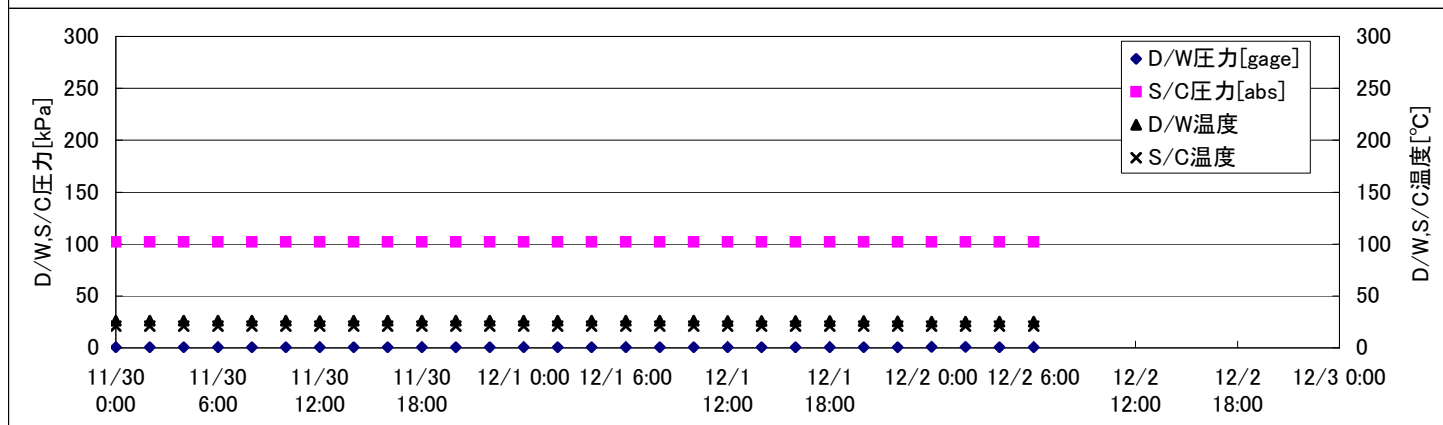
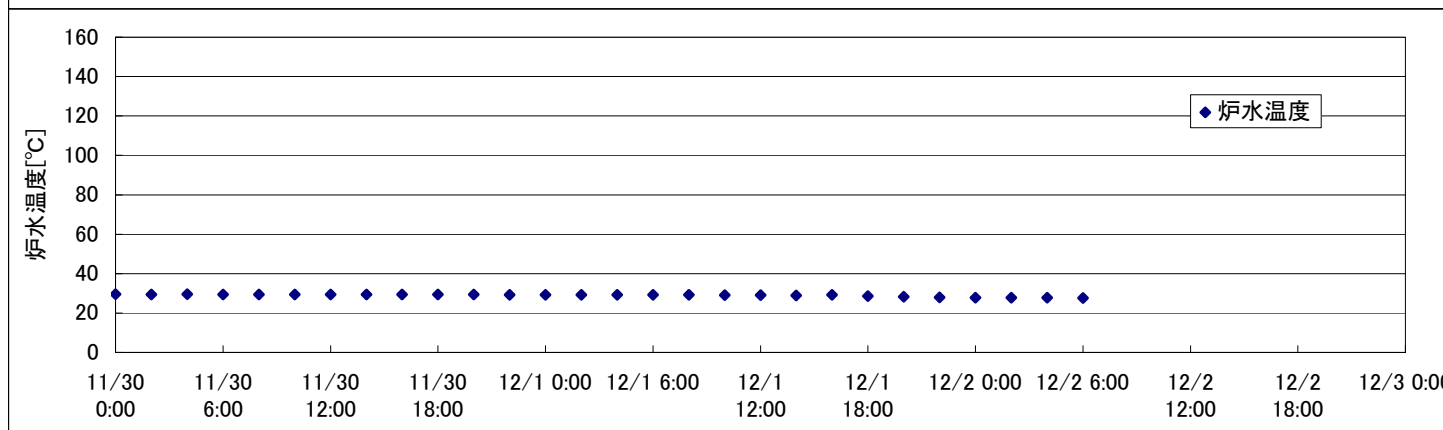
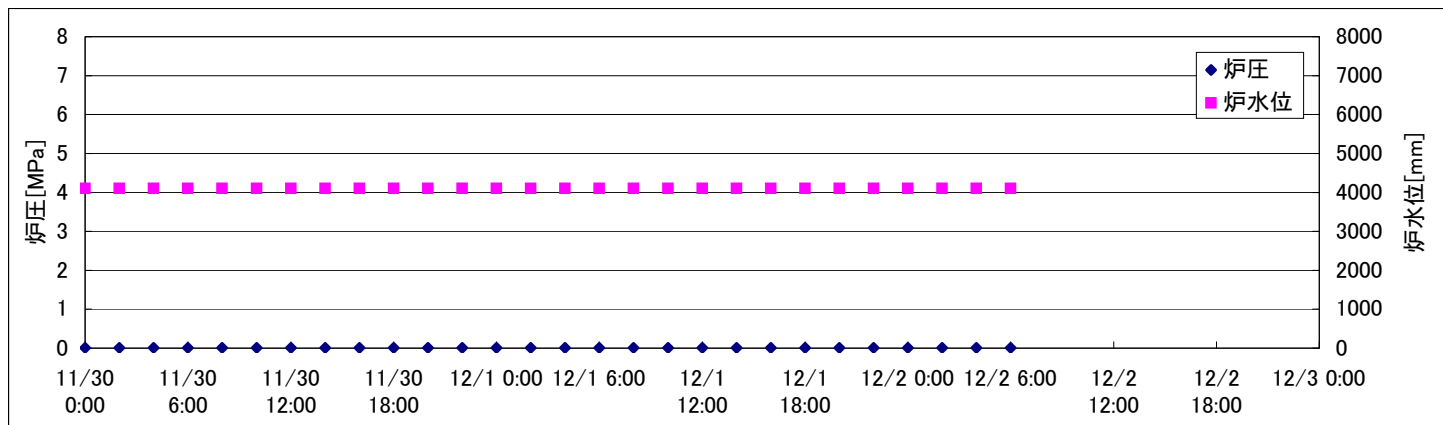
2F-1号機



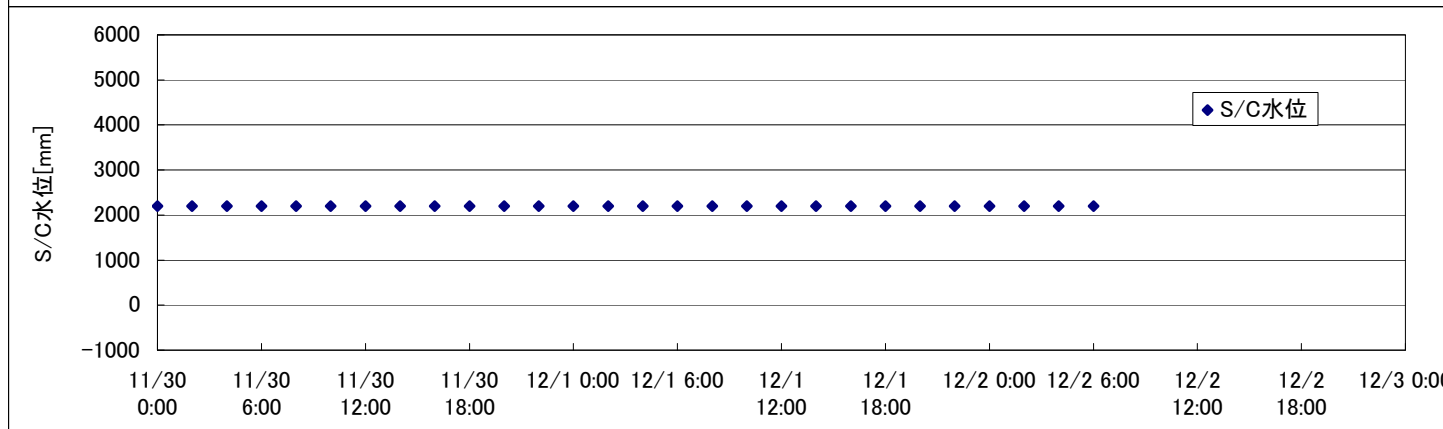
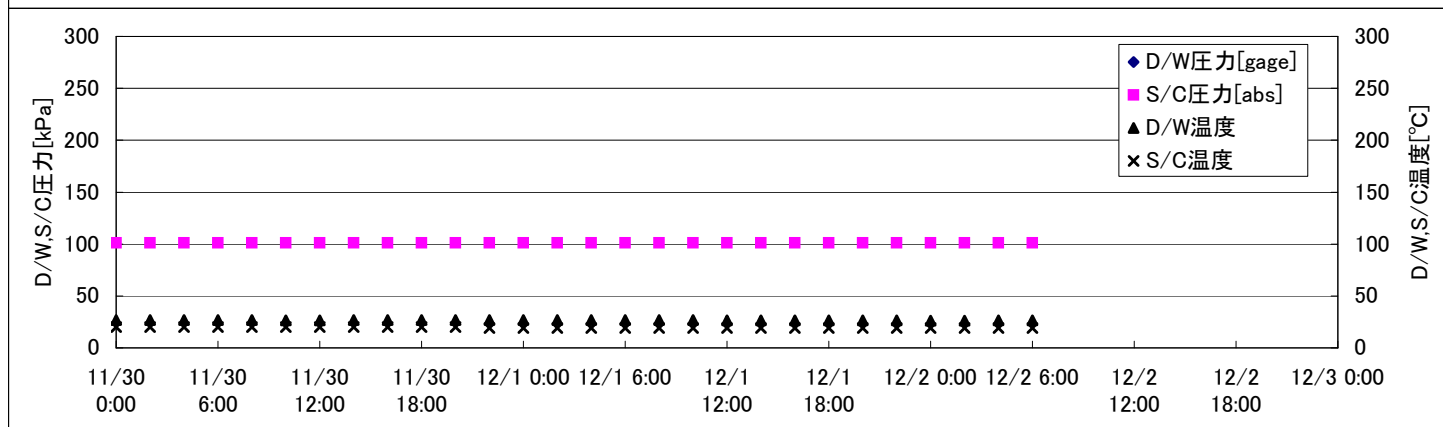
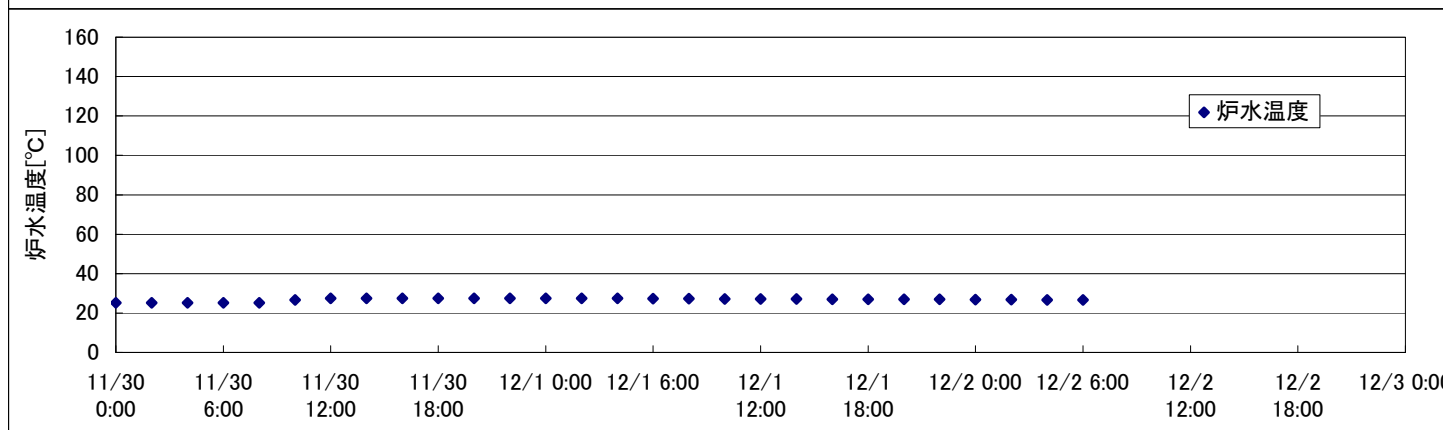
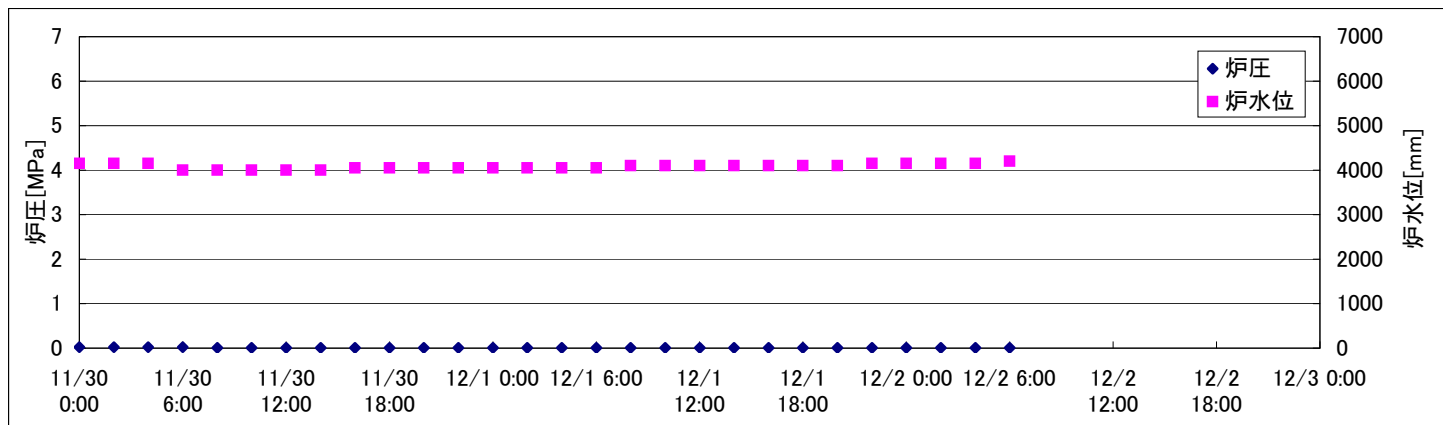
2F-2号機



2F-3号機



2F-4号機



2F-3号機

※燃料頂部(TAF)からの水位=炉水位+4200[mm]

時間	炉圧 [MPa (gage)]	炉水位 [mm] 停止時	炉水温度[°C]	D/W圧力 [kPa(gage)]	D/W温度 [°C]	S/C圧力 [kPa(abs)]	S/C水位 [mm]	S/C温度 [°C]
2011/11/30 0:00	0.01	4100	29.5	1	26.1	102	400	21
2011/11/30 2:00	0.01	4100	29.4	1	26.1	102	400	21
2011/11/30 4:00	0.01	4100	29.5	1	26.1	102	400	21
2011/11/30 6:00	0.01	4100	29.4	1	26.1	102	400	21
2011/11/30 8:00	0.01	4100	29.4	1	26.1	102	400	21
2011/11/30 10:00	0.01	4100	29.4	1	26.1	102	400	21
2011/11/30 12:00	0.01	4100	29.4	1	26.0	102	400	21
2011/11/30 14:00	0.01	4100	29.4	1	26.2	102	400	21
2011/11/30 16:00	0.01	4100	29.4	1	26.2	102	400	21
2011/11/30 18:00	0.01	4100	29.4	1	26.2	102	400	21
2011/11/30 20:00	0.01	4100	29.4	1	26.2	102	400	21
2011/11/30 22:00	0.01	4100	29.3	1	26.2	102	400	21
2011/12/1 0:00	0.01	4100	29.3	1	26.2	102	400	21
2011/12/1 2:00	0.01	4100	29.3	1	26.1	102	400	21
2011/12/1 4:00	0.01	4100	29.3	1	26.2	102	400	21
2011/12/1 6:00	0.01	4100	29.2	1	26.2	102	400	21
2011/12/1 8:00	0.01	4100	29.2	1	26.1	102	400	21
2011/12/1 10:00	0.01	4100	29.0	1	26.1	102	400	21
2011/12/1 12:00	0.01	4100	29.0	1	26.0	102	400	21
2011/12/1 14:00	0.01	4100	28.9	1	26.0	102	400	21
2011/12/1 16:00	0.01	4100	29.3	1	26.0	102	400	21
2011/12/1 18:00	0.01	4100	28.6	1	26.0	102	400	21
2011/12/1 20:00	0.01	4100	28.2	1	25.9	102	400	21
2011/12/1 22:00	0.01	4100	27.9	1	25.6	102	400	21
2011/12/2 0:00	0.01	4100	27.7	1	25.4	102	400	21
2011/12/2 2:00	0.01	4100	27.7	1	25.3	102	400	21
2011/12/2 4:00	0.01	4100	27.7	1	25.3	102	400	21
2011/12/2 6:00	0.01	4100	27.6	1	25.4	102	400	21
2011/12/2 8:00								
2011/12/2 10:00								
2011/12/2 12:00								
2011/12/2 14:00								
2011/12/2 16:00								
2011/12/2 18:00								
2011/12/2 20:00								
2011/12/2 22:00								
2011/12/3 0:00								

12/1 14:08 RHRポンプ(A) 停止
14:19 RHRポンプ(B) 起動

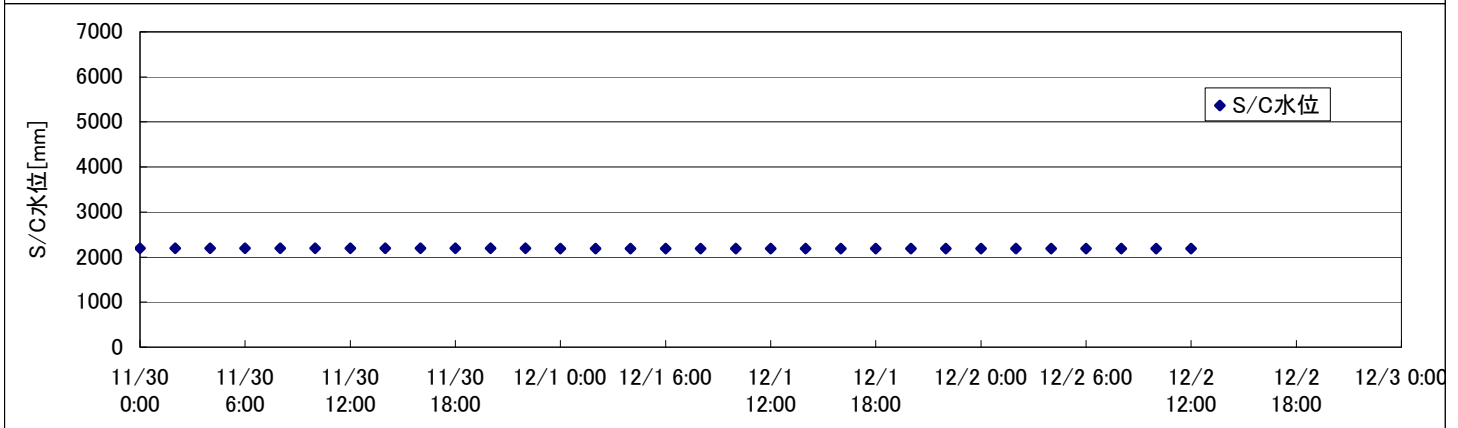
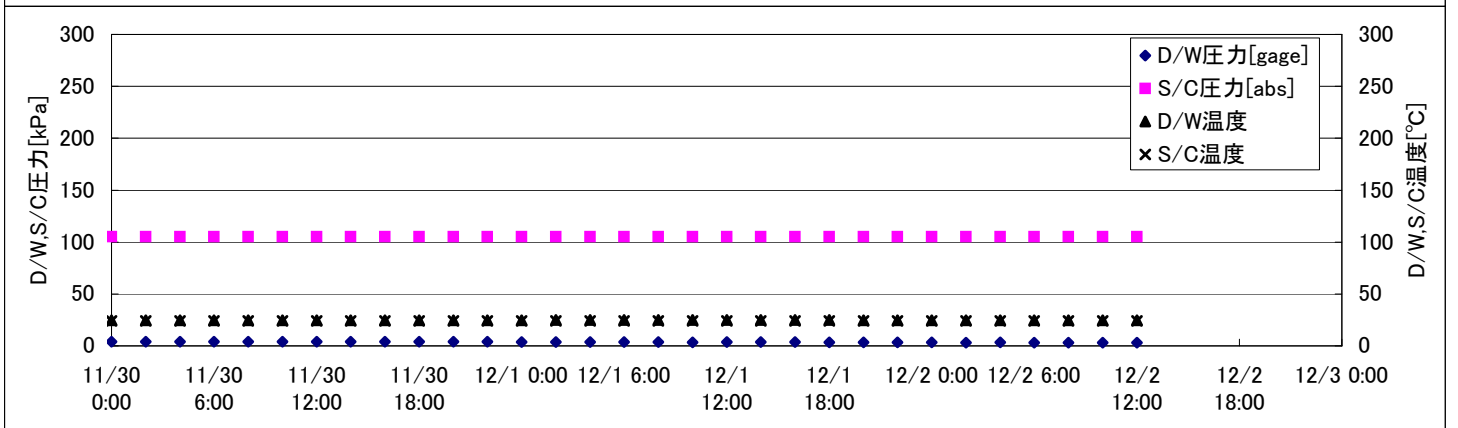
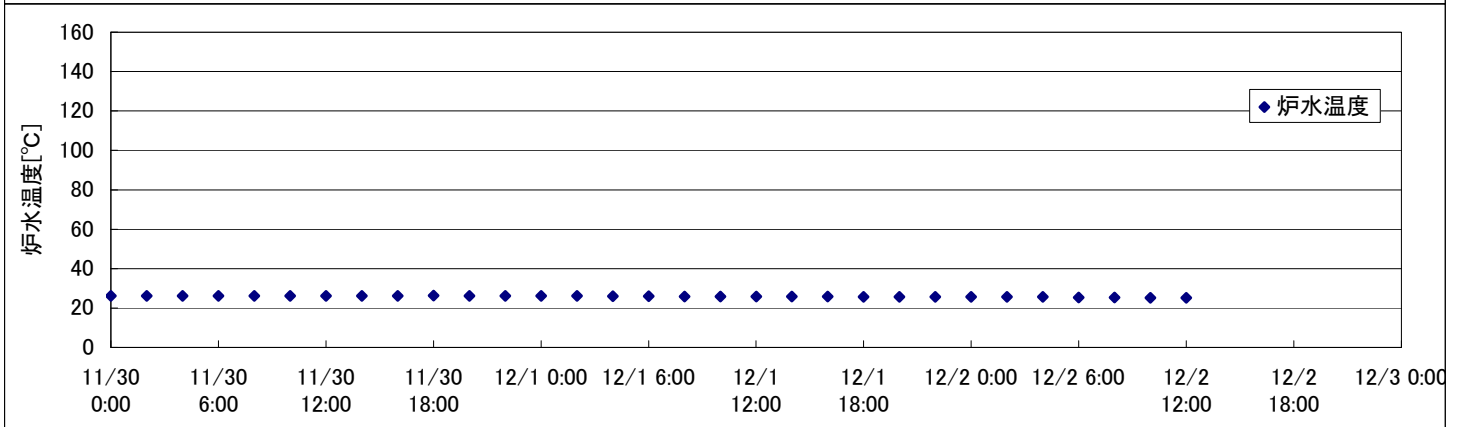
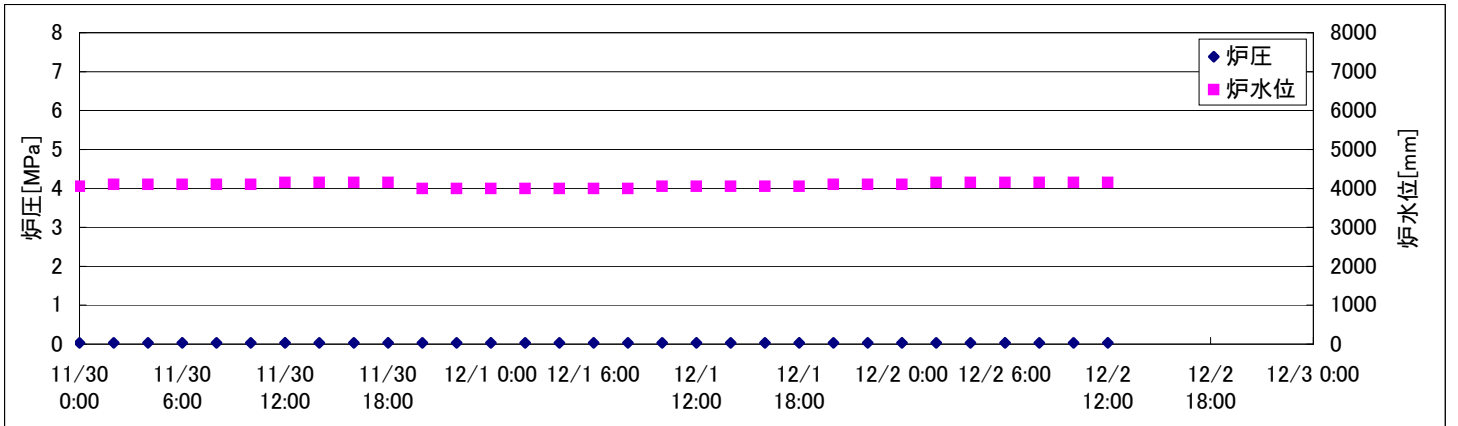
2F-4号機

※燃料頂部(TAF)からの水位 = 炉水位 + 4200[mm]

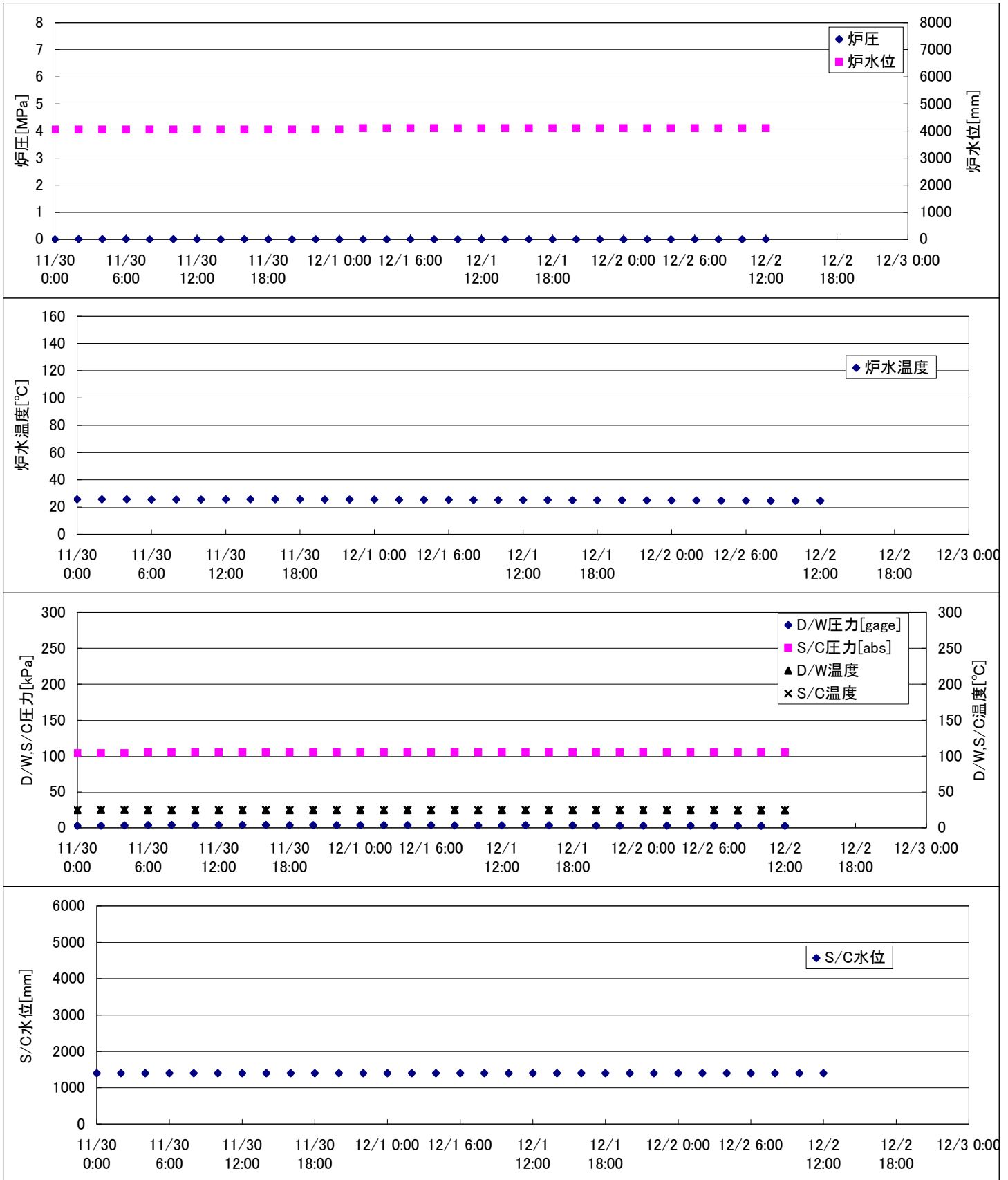
時間	炉圧 [MPa (gage)]	炉水位 [mm] 停止時	炉水温度[°C]	D/W圧力 [kPa(gage)]	D/W温度 [°C]	S/C圧力 [kPa(abs)]	S/C水位 [mm]	S/C温度 [°C]
2011/11/30 0:00	0.02	4150	25.1		26.7	101	2200	20
2011/11/30 2:00	0.02	4150	25.1		26.7	101	2200	20
2011/11/30 4:00	0.02	4150	25.1		26.7	101	2200	20
2011/11/30 6:00	0.02	4000	25.1		26.7	101	2200	20
2011/11/30 8:00	0.01	4000	25.1		26.7	101	2200	20
2011/11/30 10:00	0.01	4000	26.7		26.6	101	2200	20
2011/11/30 12:00	0.01	4000	27.4		26.6	101	2200	20
2011/11/30 14:00	0.01	4000	27.4		26.7	101	2200	20
2011/11/30 16:00	0.01	4050	27.4		26.7	101	2200	20
2011/11/30 18:00	0.01	4050	27.4		26.8	101	2200	20
2011/11/30 20:00	0.01	4050	27.4		26.8	101	2200	20
2011/11/30 22:00	0.01	4050	27.4		26.9	101	2200	19
2011/12/1 0:00	0.01	4050	27.4		26.9	101	2200	19
2011/12/1 2:00	0.01	4050	27.4		26.9	101	2200	19
2011/12/1 4:00	0.01	4050	27.4		26.8	101	2200	19
2011/12/1 6:00	0.01	4050	27.3		26.9	101	2200	19
2011/12/1 8:00	0.01	4100	27.3		26.9	101	2200	19
2011/12/1 10:00	0.01	4100	27.2		26.9	101	2200	19
2011/12/1 12:00	0.01	4100	27.1		26.6	101	2200	19
2011/12/1 14:00	0.01	4100	27.1		26.4	101	2200	19
2011/12/1 16:00	0.01	4100	27.0		26.4	101	2200	19
2011/12/1 18:00	0.01	4100	27.0		26.6	101	2200	19
2011/12/1 20:00	0.01	4100	26.9		26.5	101	2200	19
2011/12/1 22:00	0.01	4150	26.9		26.5	101	2200	19
2011/12/2 0:00	0.01	4150	26.8		26.2	101	2200	19
2011/12/2 2:00	0.01	4150	26.8		26.2	101	2200	19
2011/12/2 4:00	0.01	4150	26.7		26.6	101	2200	19
2011/12/2 6:00	0.01	4200	26.6		26.5	101	2200	19
2011/12/2 8:00								
2011/12/2 10:00								
2011/12/2 12:00								
2011/12/2 14:00								
2011/12/2 16:00								
2011/12/2 18:00								
2011/12/2 20:00								
2011/12/2 22:00								
2011/12/3 0:00								

D/W圧力について
 ・パーソナルエアロックドア開放中であるため、9/6 10:00 より記載せず

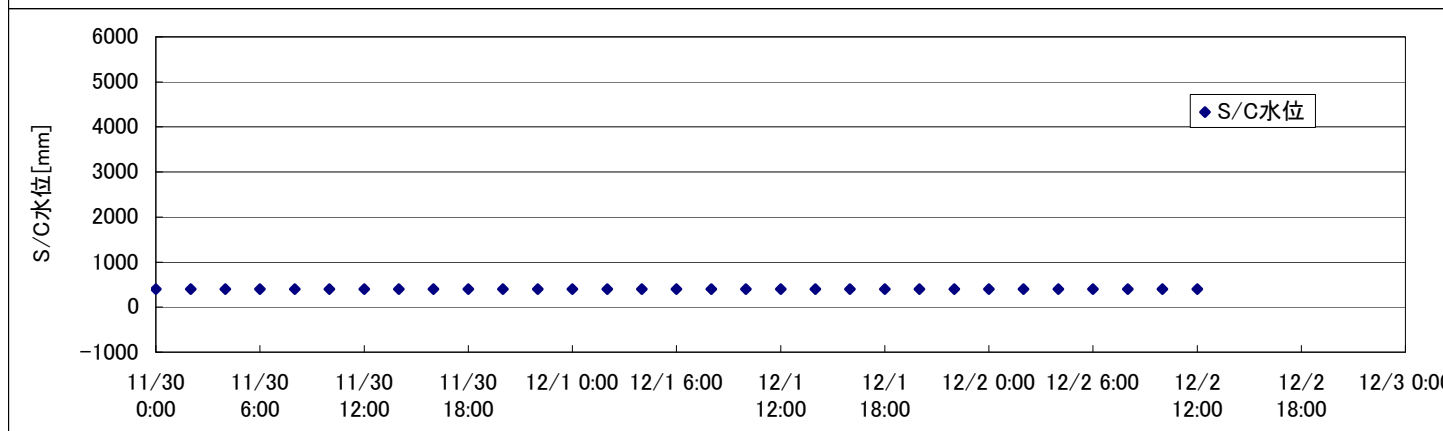
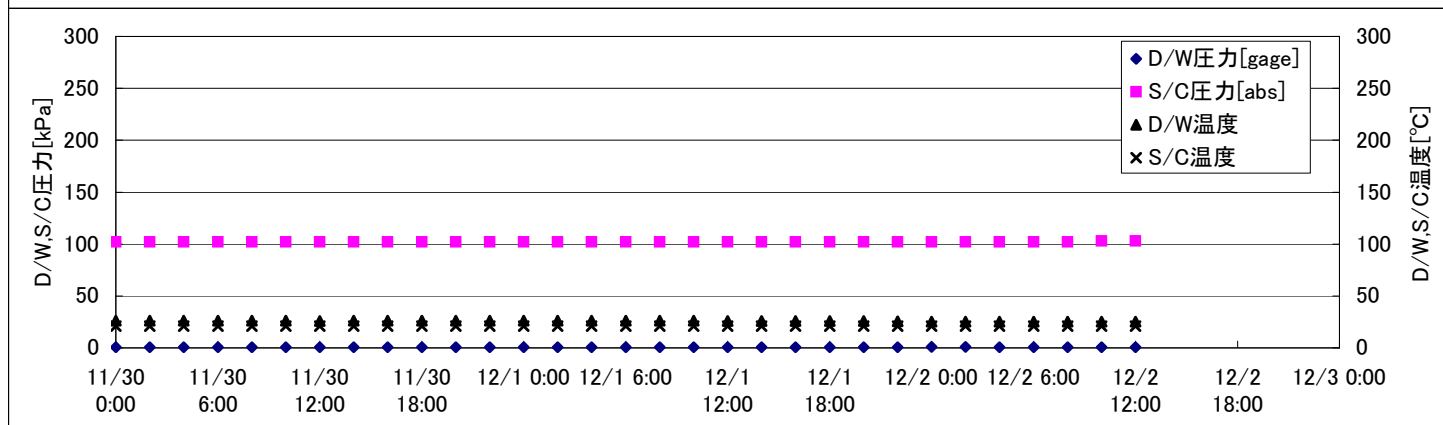
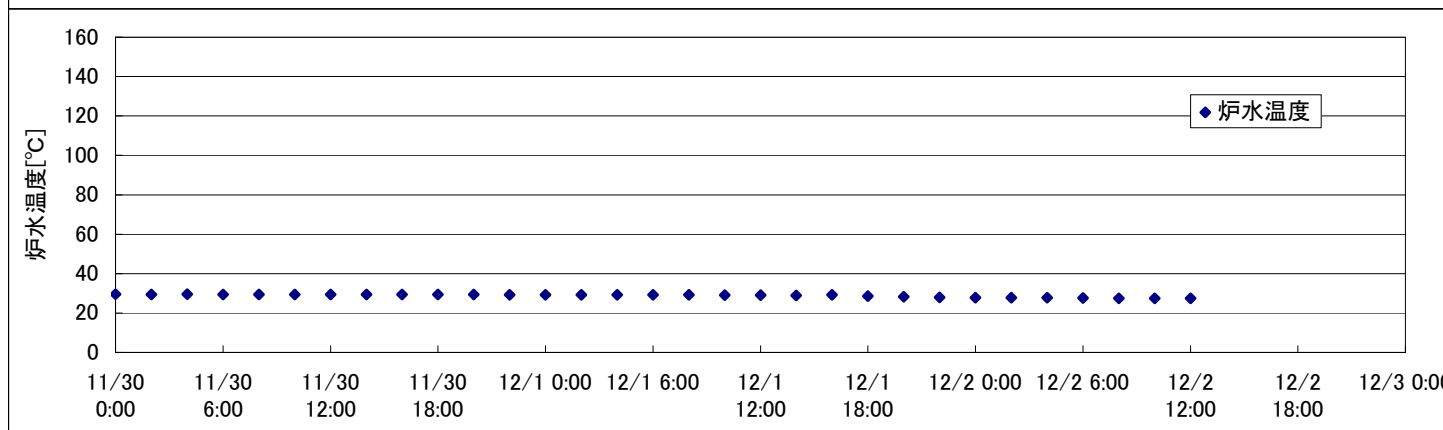
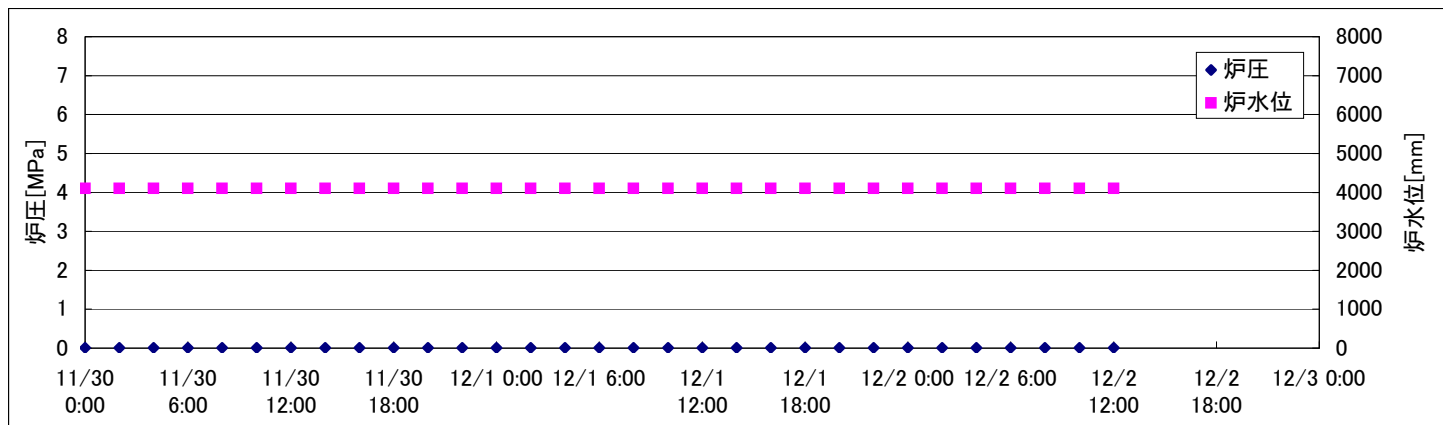
2F-1号機



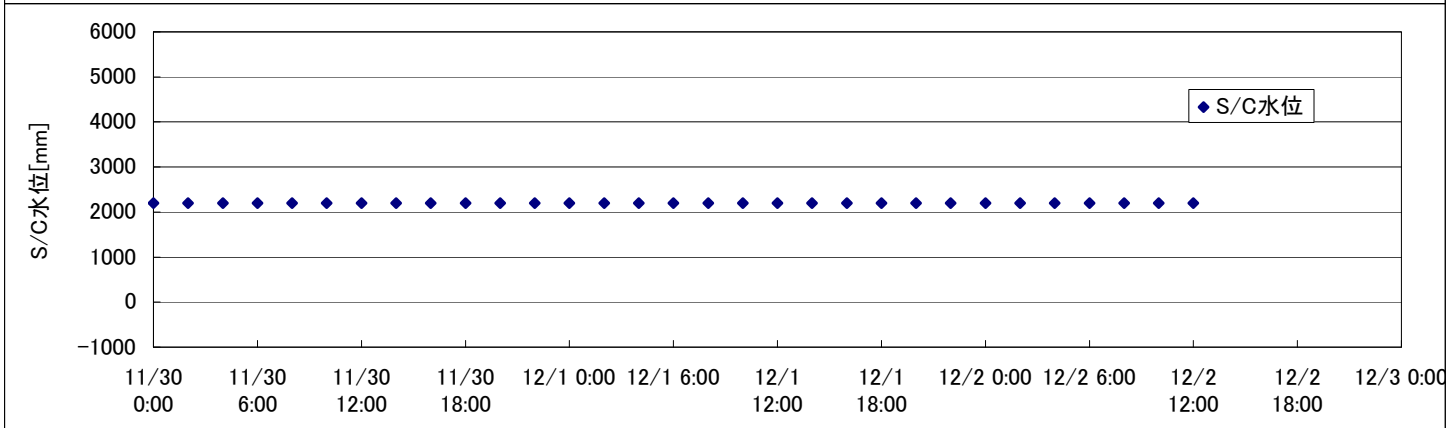
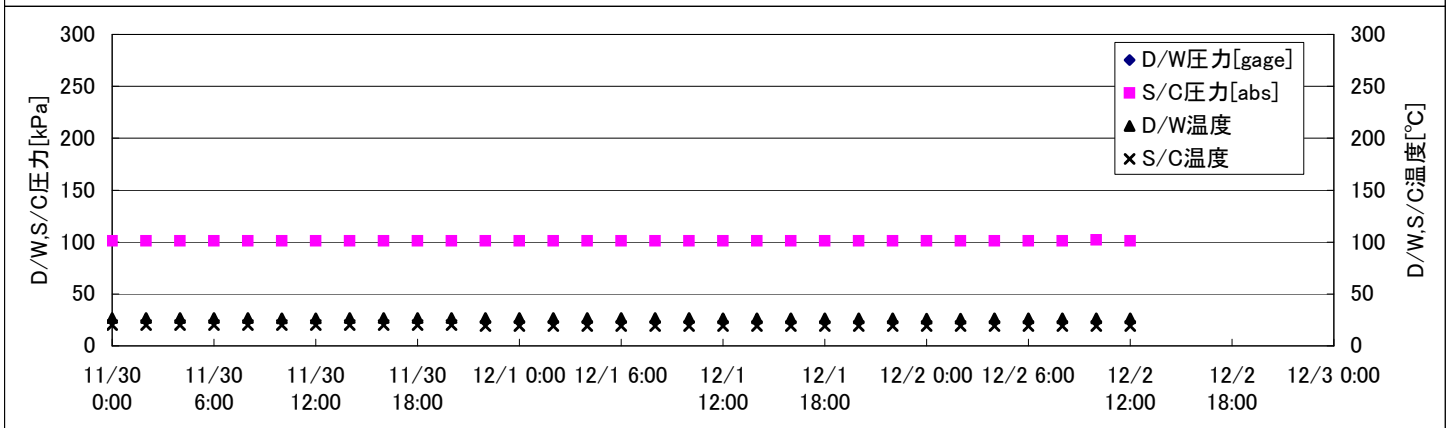
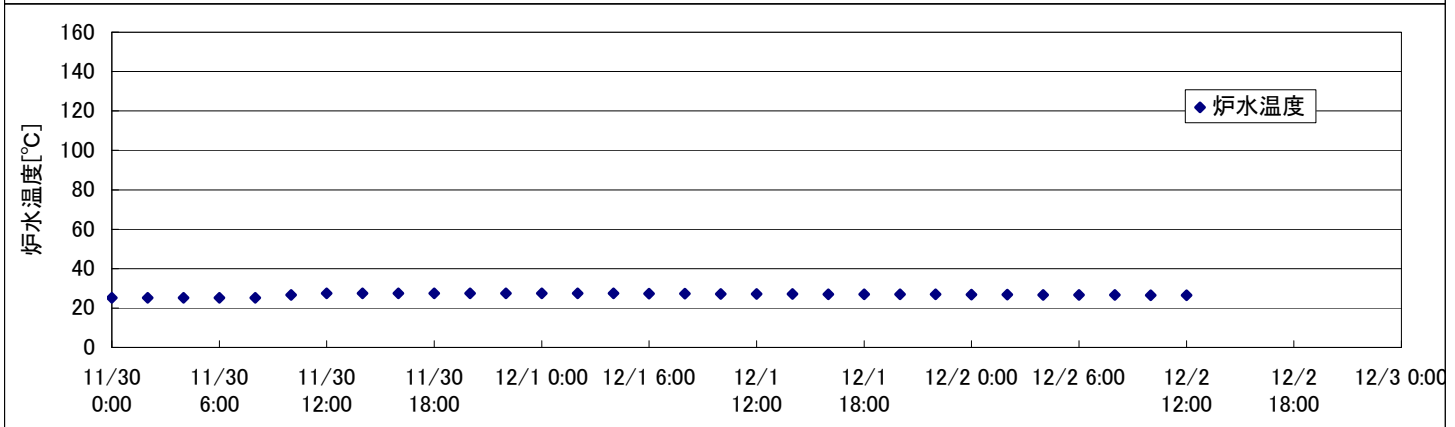
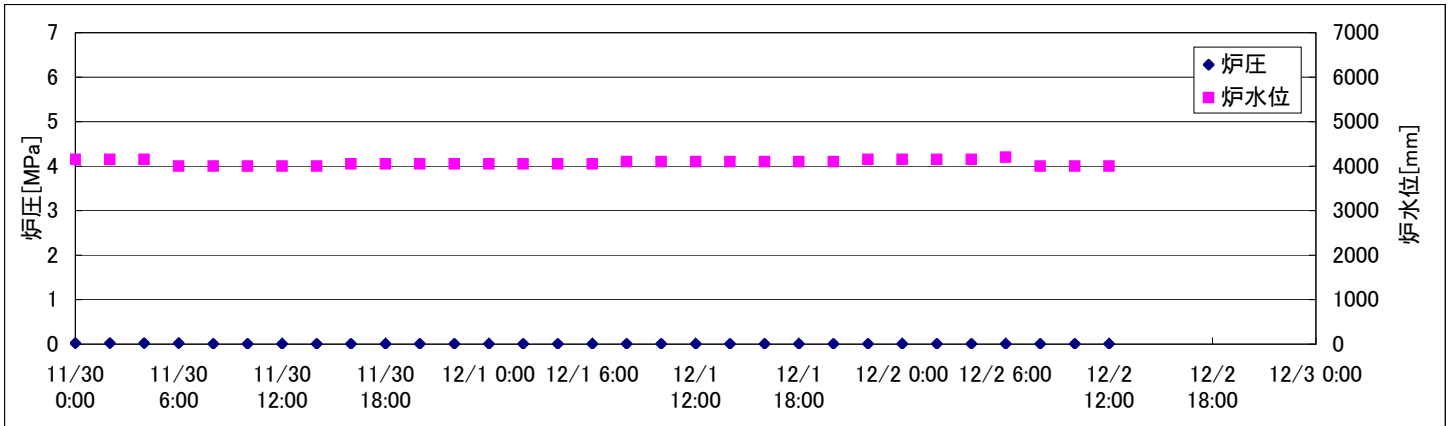
2F-2号機



2F-3号機



2F-4号機



2F-4号機

※燃料頂部(TAF)からの水位 = 炉水位 + 4200[mm]

時間	炉圧 [MPa (gage)]	炉水位 [mm] 停止時	炉水温度[°C]	D/W圧力 [kPa(gage)]	D/W温度 [°C]	S/C圧力 [kPa(abs)]	S/C水位 [mm]	S/C温度 [°C]
2011/11/30 0:00	0.02	4150	25.1		26.7	101	2200	20
2011/11/30 2:00	0.02	4150	25.1		26.7	101	2200	20
2011/11/30 4:00	0.02	4150	25.1		26.7	101	2200	20
2011/11/30 6:00	0.02	4000	25.1		26.7	101	2200	20
2011/11/30 8:00	0.01	4000	25.1		26.7	101	2200	20
2011/11/30 10:00	0.01	4000	26.7		26.6	101	2200	20
2011/11/30 12:00	0.01	4000	27.4		26.6	101	2200	20
2011/11/30 14:00	0.01	4000	27.4		26.7	101	2200	20
2011/11/30 16:00	0.01	4050	27.4		26.7	101	2200	20
2011/11/30 18:00	0.01	4050	27.4		26.8	101	2200	20
2011/11/30 20:00	0.01	4050	27.4		26.8	101	2200	20
2011/11/30 22:00	0.01	4050	27.4		26.9	101	2200	19
2011/12/1 0:00	0.01	4050	27.4		26.9	101	2200	19
2011/12/1 2:00	0.01	4050	27.4		26.9	101	2200	19
2011/12/1 4:00	0.01	4050	27.4		26.8	101	2200	19
2011/12/1 6:00	0.01	4050	27.3		26.9	101	2200	19
2011/12/1 8:00	0.01	4100	27.3		26.9	101	2200	19
2011/12/1 10:00	0.01	4100	27.2		26.9	101	2200	19
2011/12/1 12:00	0.01	4100	27.1		26.6	101	2200	19
2011/12/1 14:00	0.01	4100	27.1		26.4	101	2200	19
2011/12/1 16:00	0.01	4100	27.0		26.4	101	2200	19
2011/12/1 18:00	0.01	4100	27.0		26.6	101	2200	19
2011/12/1 20:00	0.01	4100	26.9		26.5	101	2200	19
2011/12/1 22:00	0.01	4150	26.9		26.5	101	2200	19
2011/12/2 0:00	0.01	4150	26.8		26.2	101	2200	19
2011/12/2 2:00	0.01	4150	26.8		26.2	101	2200	19
2011/12/2 4:00	0.01	4150	26.7		26.6	101	2200	19
2011/12/2 6:00	0.01	4200	26.6		26.5	101	2200	19
2011/12/2 8:00	0.01	4000	26.6		26.5	101	2200	19
2011/12/2 10:00	0.01	4000	26.5		26.4	102	2200	19
2011/12/2 12:00	0.01	4000	26.4		26.4	101	2200	19
2011/12/2 14:00								
2011/12/2 16:00								
2011/12/2 18:00								
2011/12/2 20:00								
2011/12/2 22:00								
2011/12/3 0:00								

D/W圧力について

・パーソナルエアロックドア開放中であるため、9/6 10:00 より記載せず