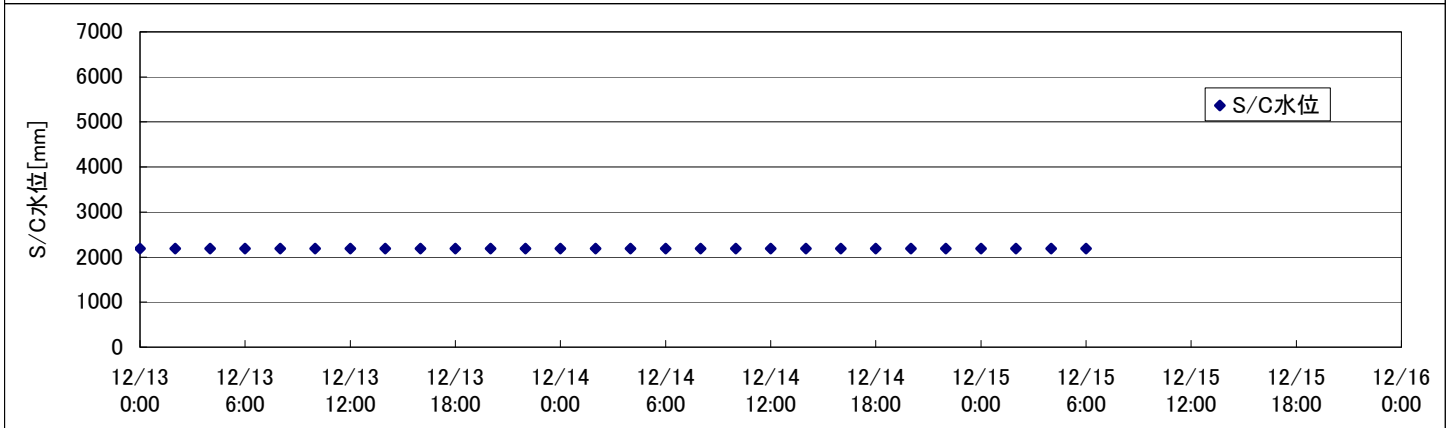
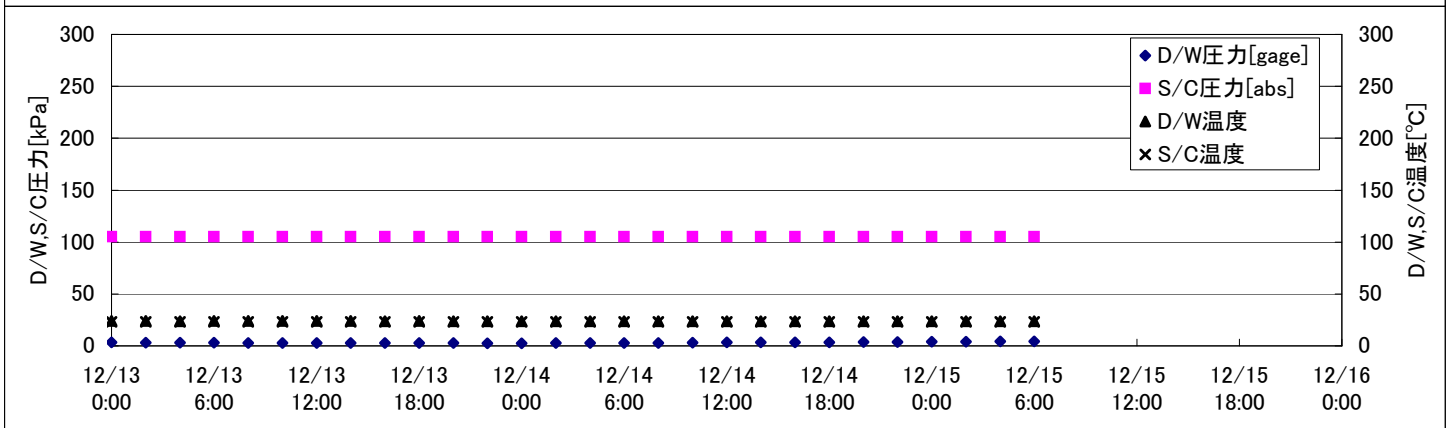
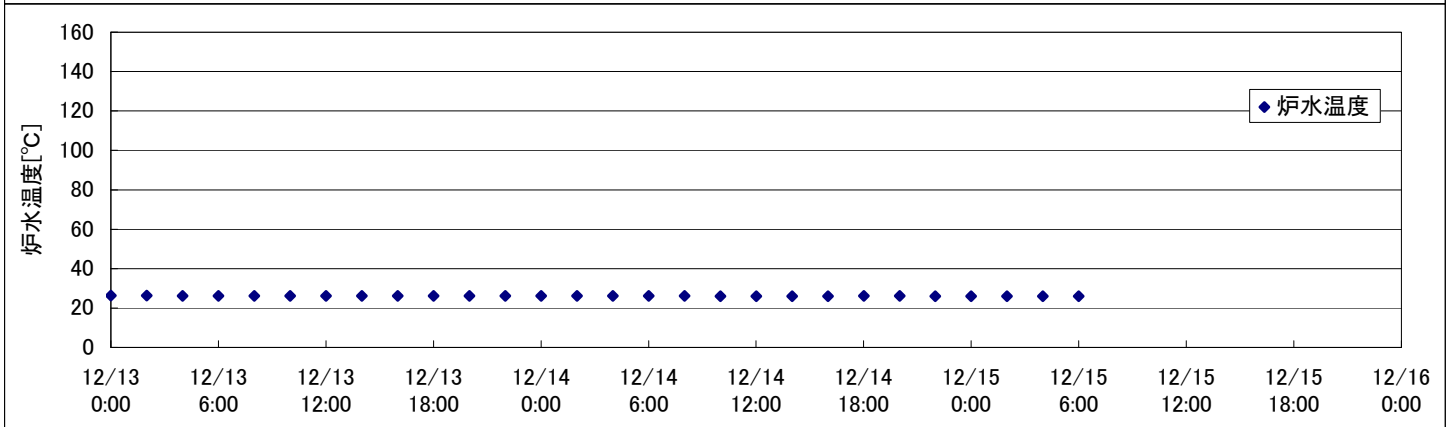
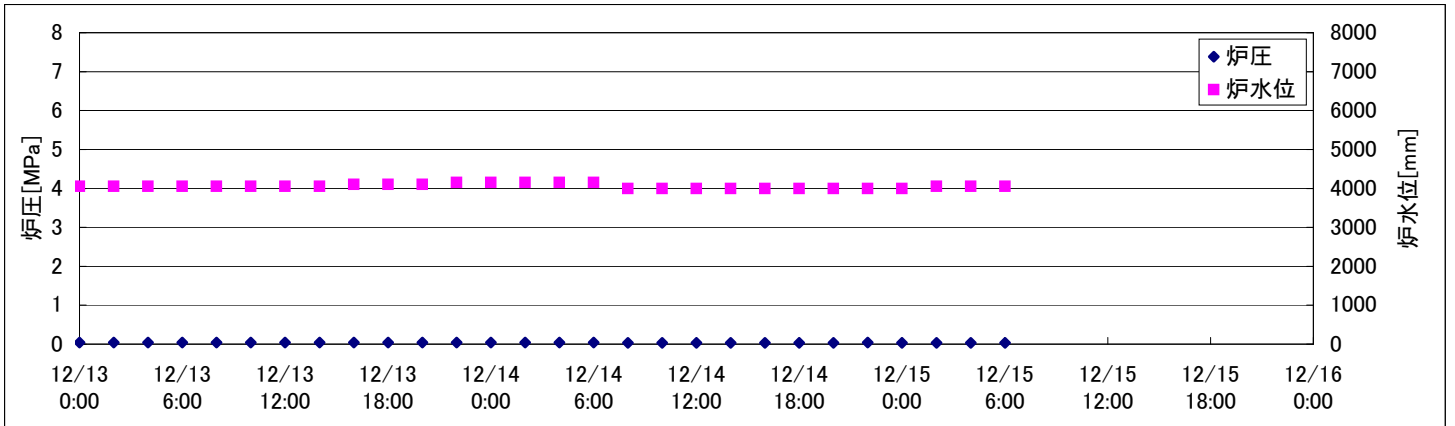
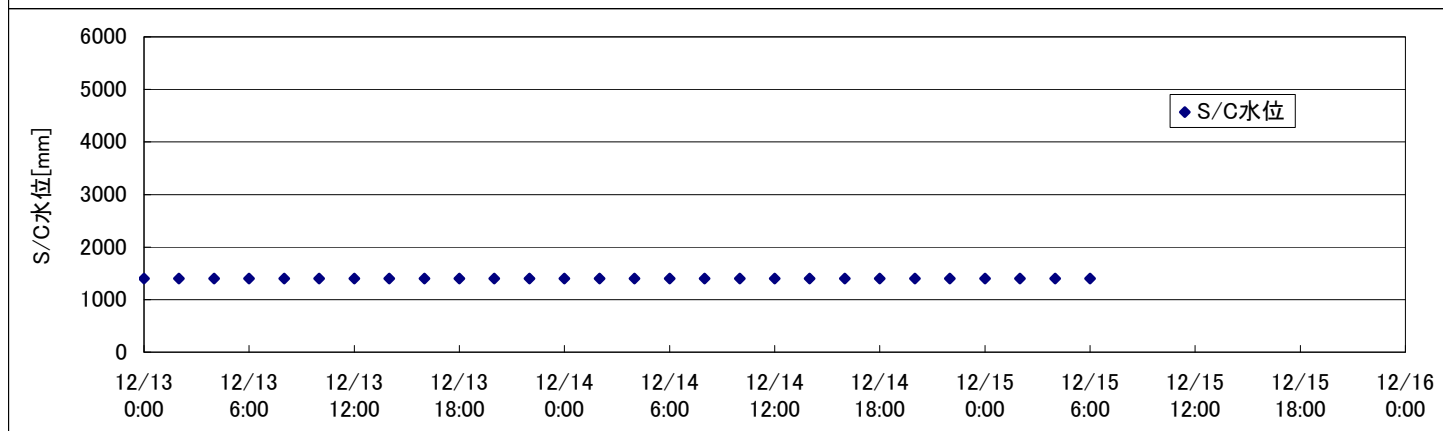
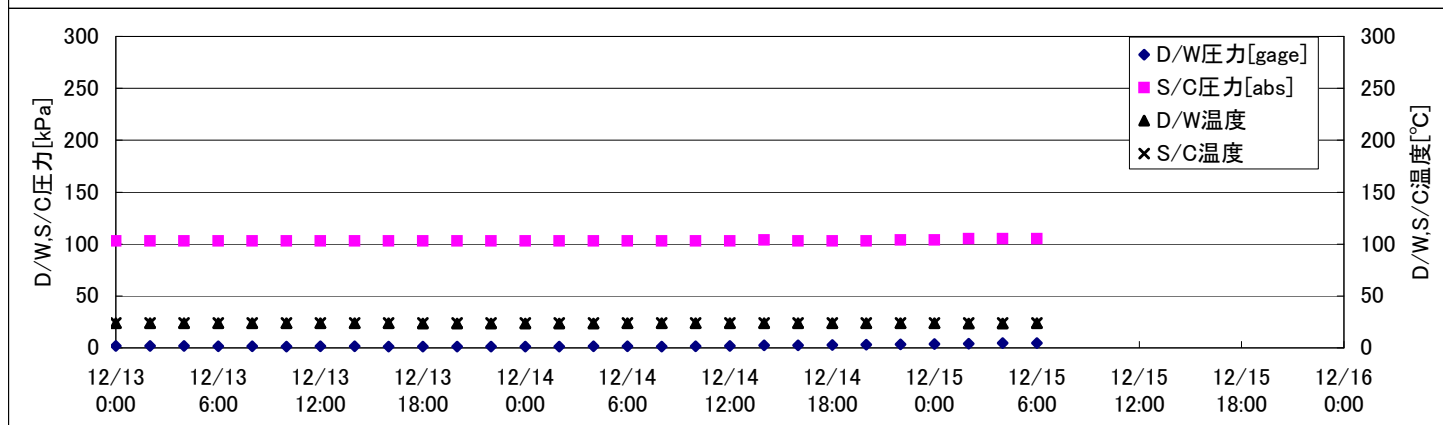
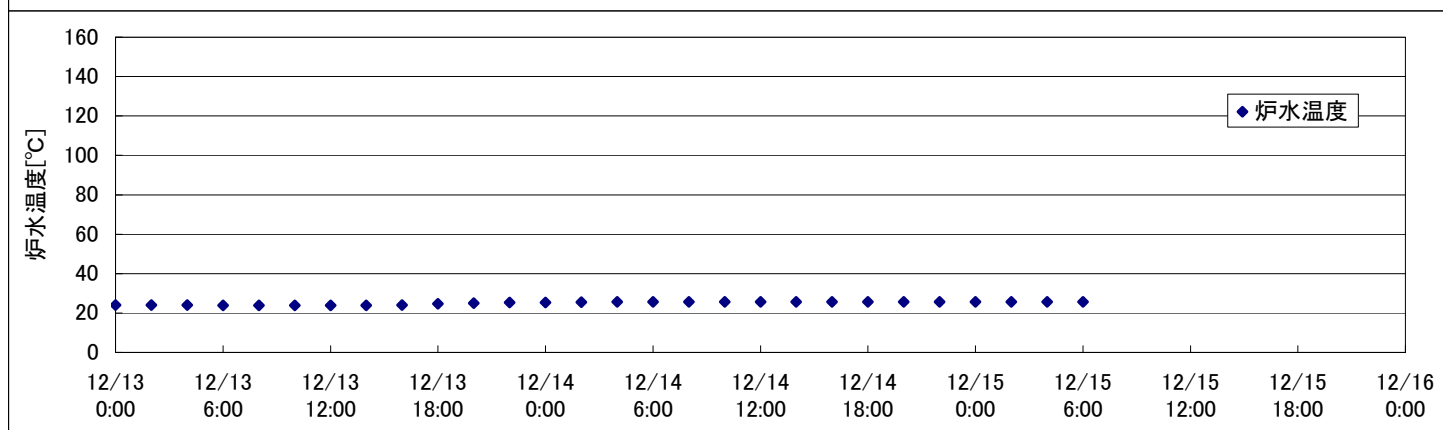
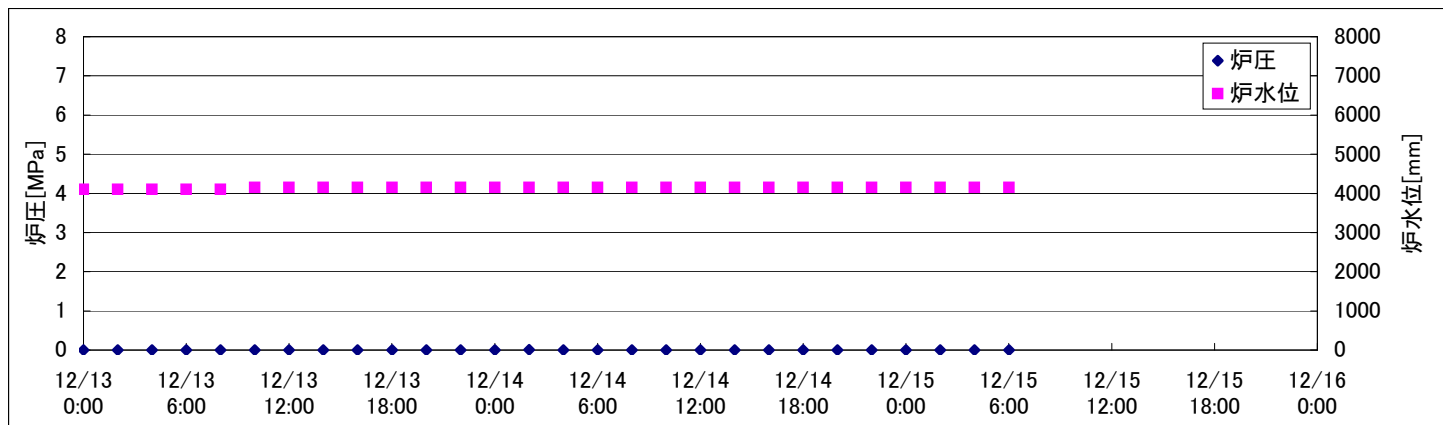


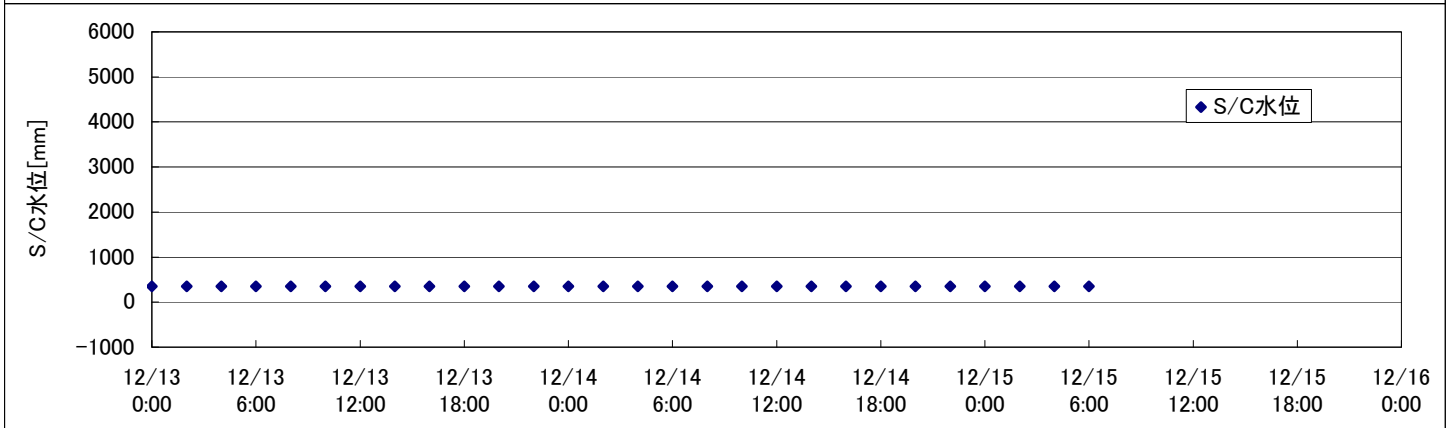
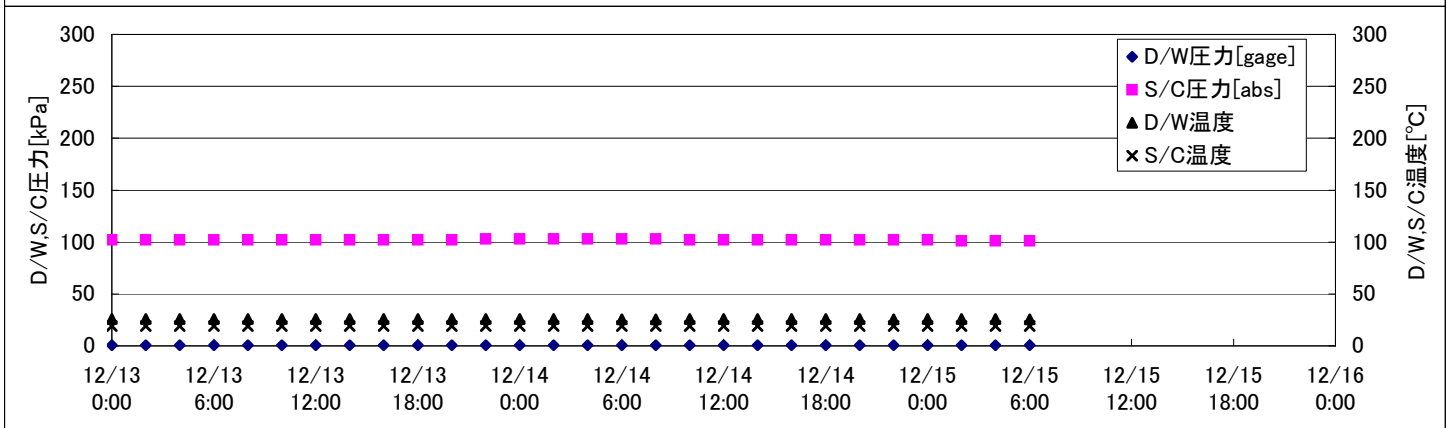
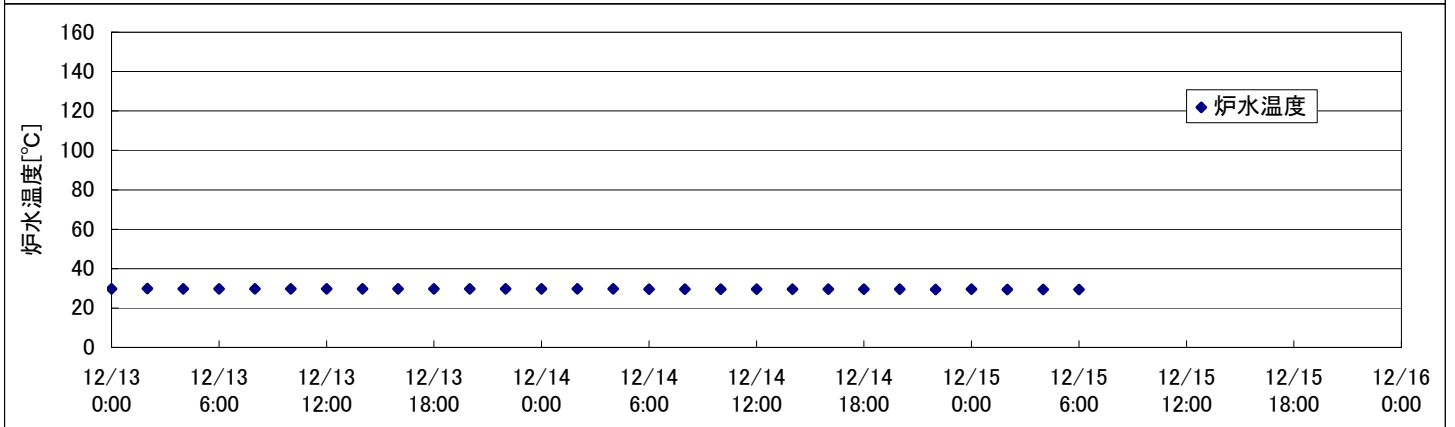
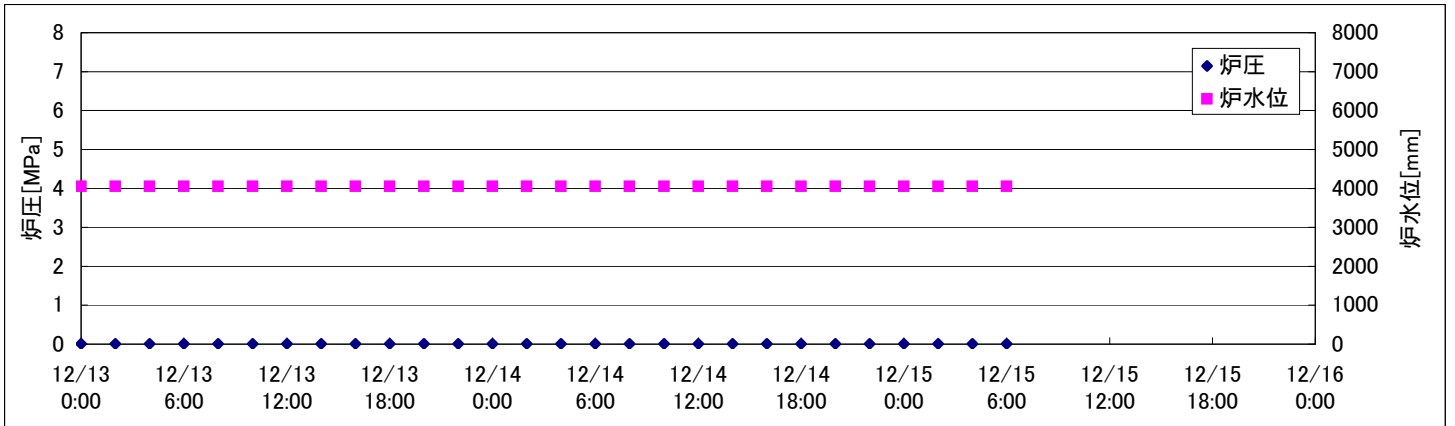
2F-1号機



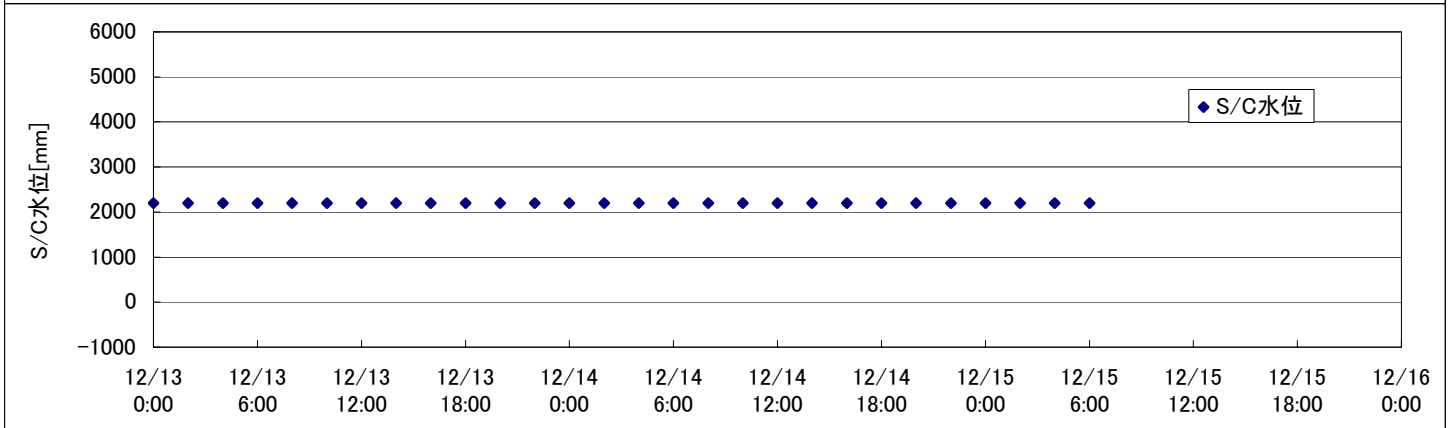
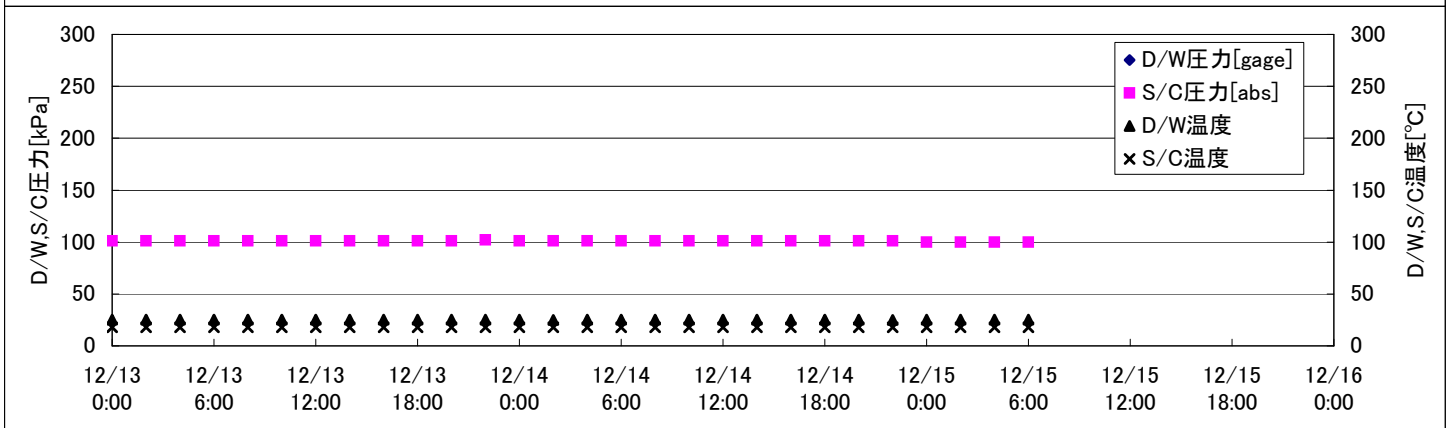
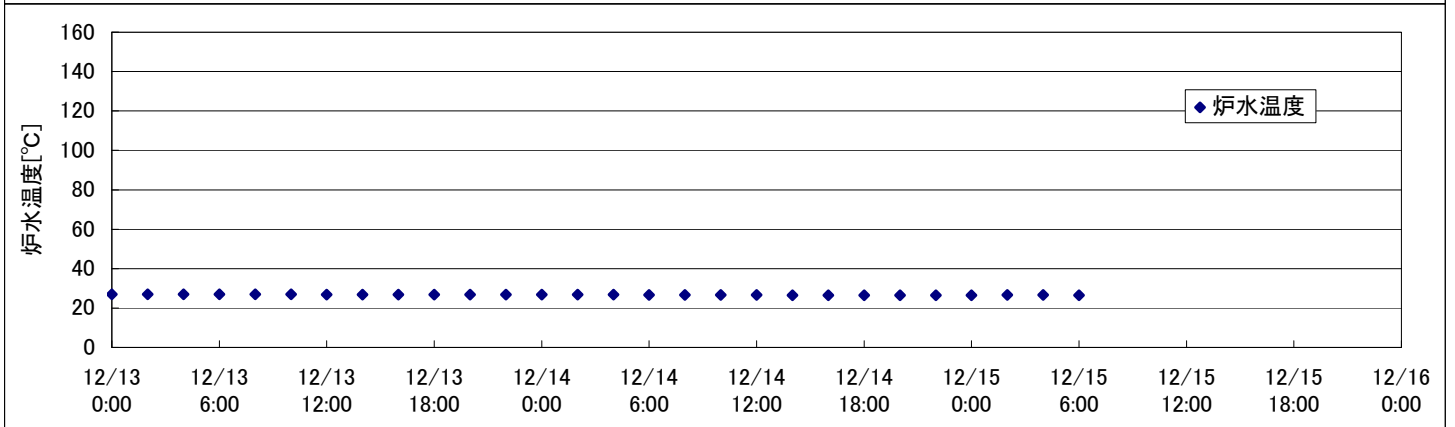
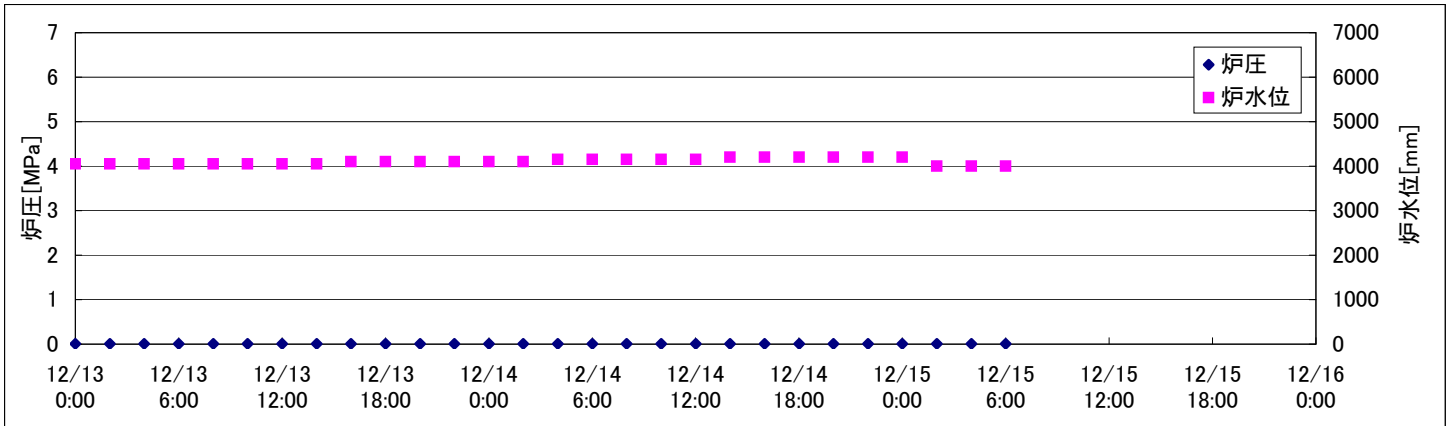
2F-2号機



2F-3号機



2F-4号機



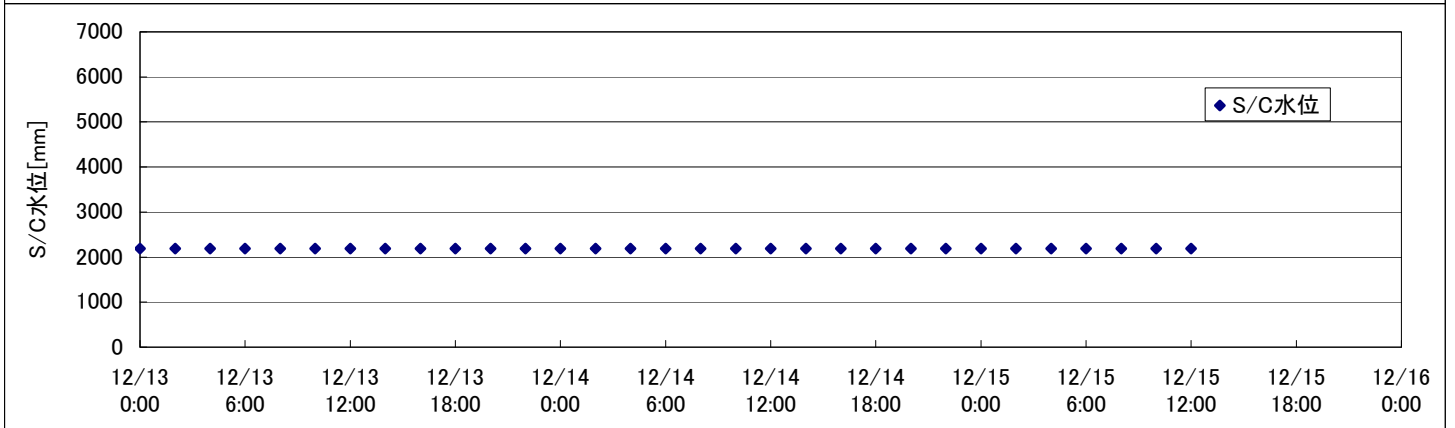
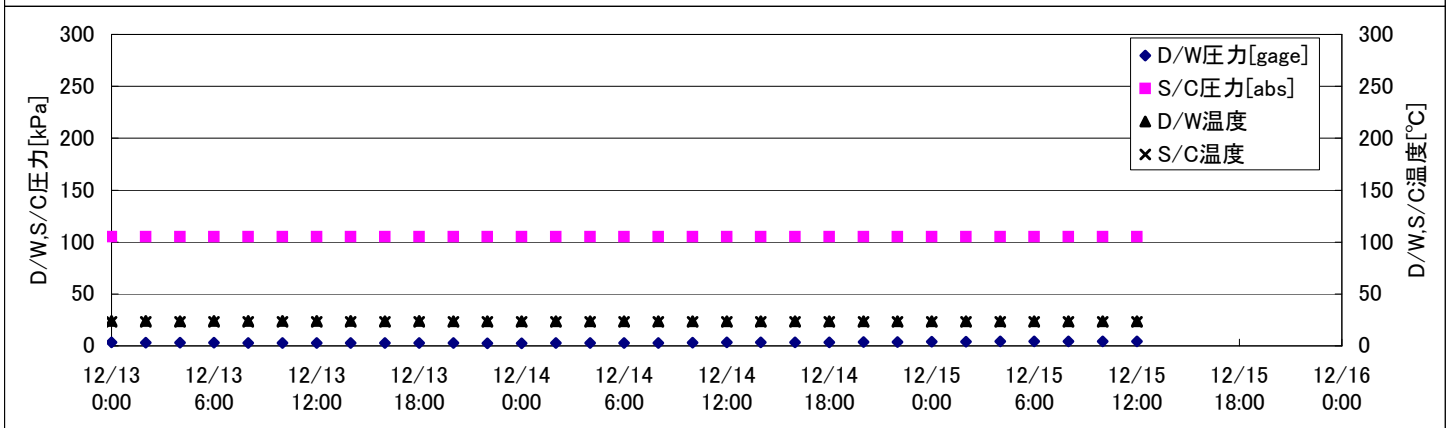
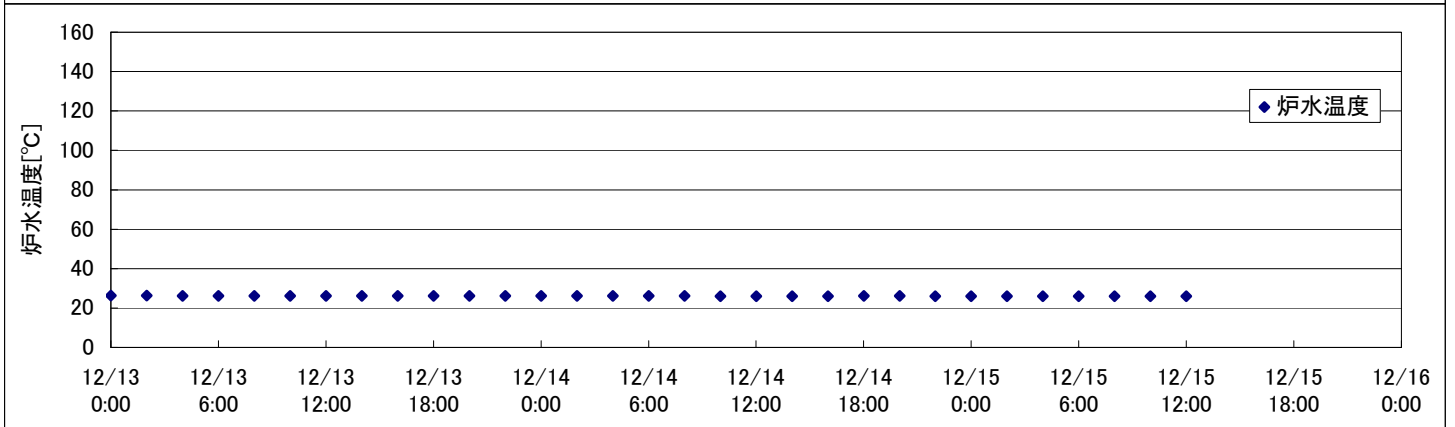
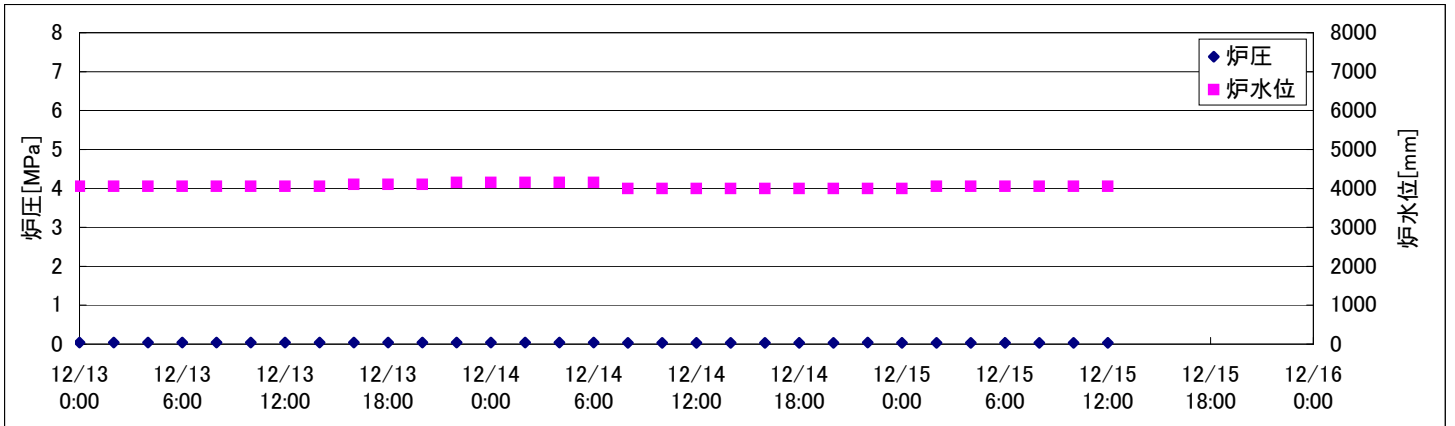
2F-4号機

※燃料頂部(TAF)からの水位 = 炉水位 + 4200[mm]

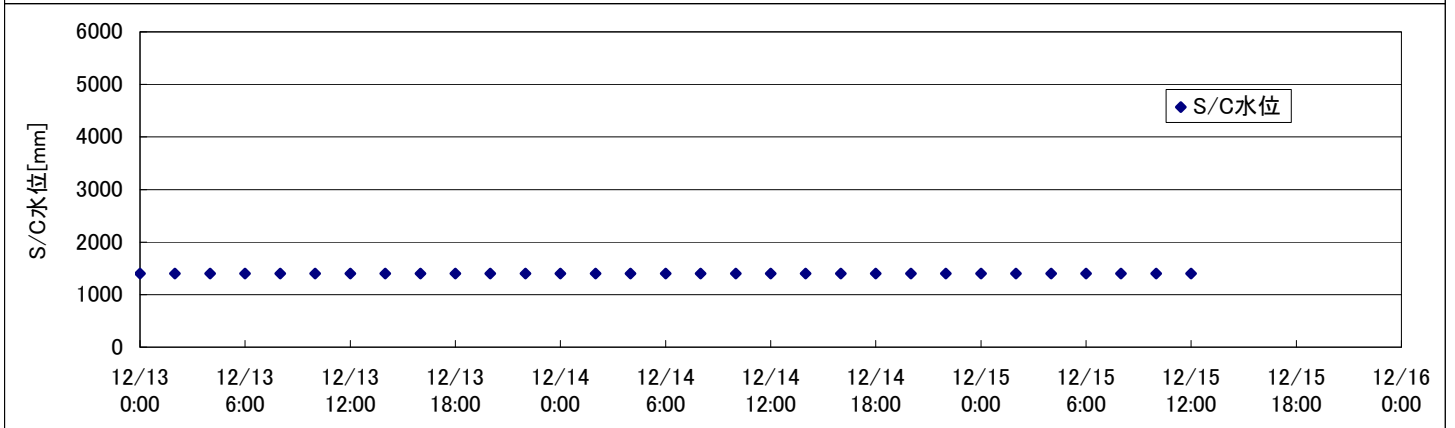
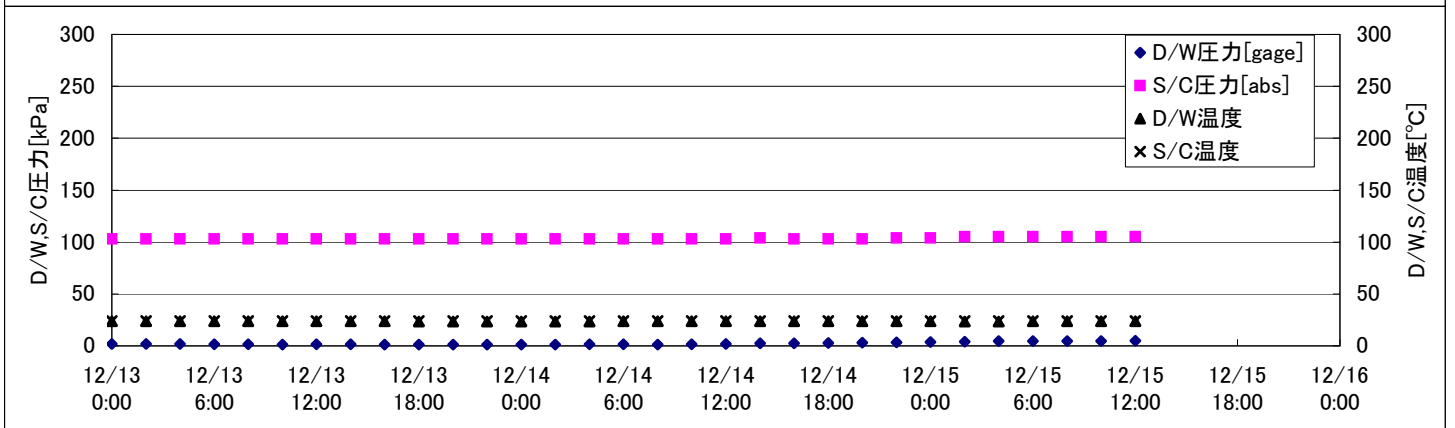
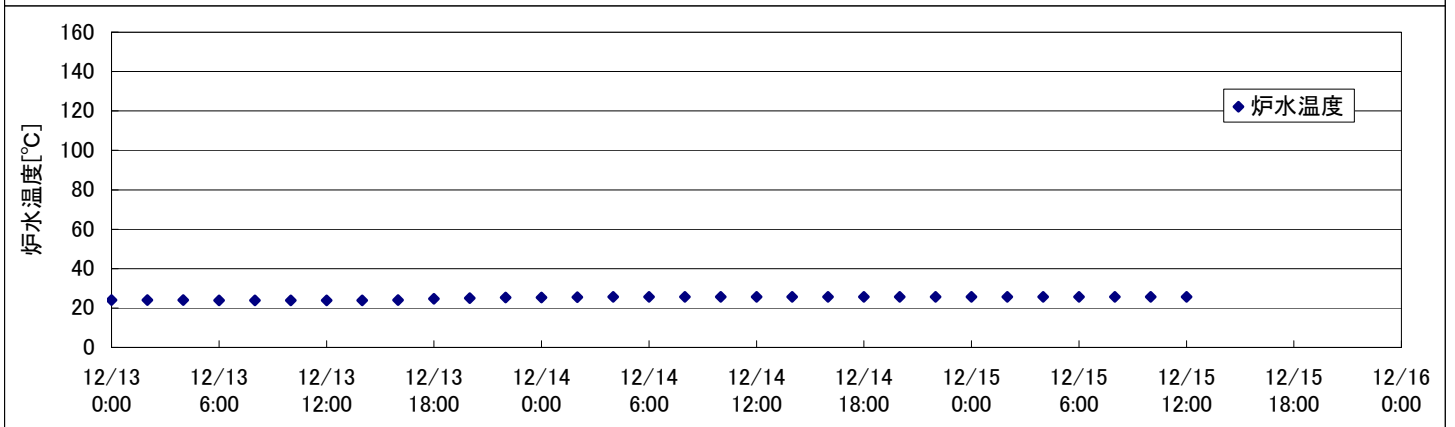
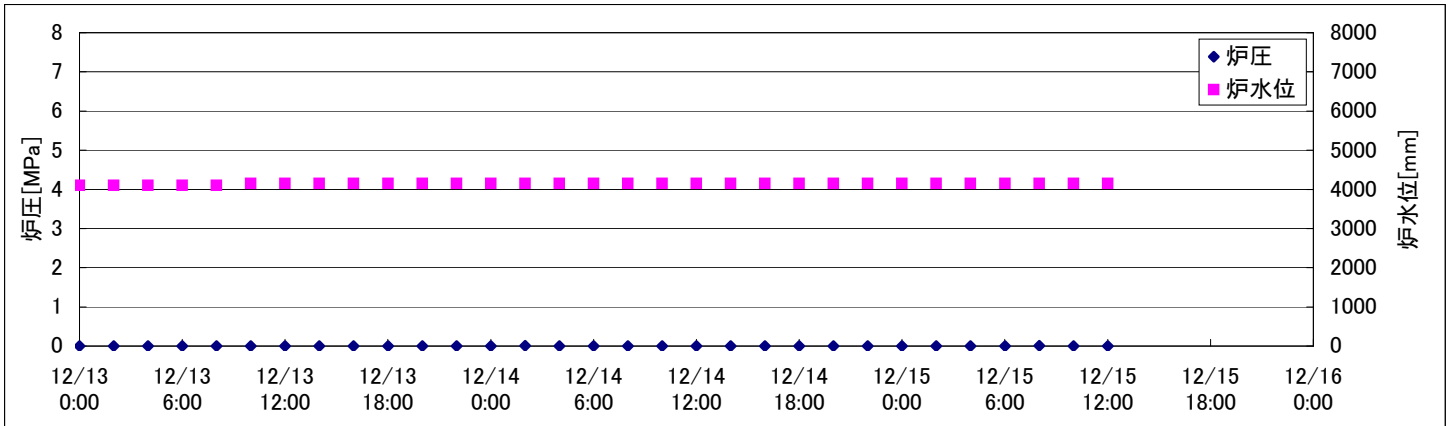
| 時間 | 炉圧 [MPa (gage)] | 炉水位 [mm] 停止時 | 炉水温度[°C] | D/W圧力 [kPa(gage)] | D/W温度 [°C] | S/C圧力 [kPa(abs)] | S/C水位 [mm] | S/C温度 [°C] |
|------------------------|-----------------------|--------------------|-------------|----------------------|---------------|---------------------|---------------|---------------|
| 2011/12/13 0:00 | 0.01 | 4050 | 27.0 | | 25.3 | 101 | 2200 | 18 |
| 2011/12/13 2:00 | 0.01 | 4050 | 27.0 | | 25.3 | 101 | 2200 | 18 |
| 2011/12/13 4:00 | 0.01 | 4050 | 27.0 | | 25.3 | 101 | 2200 | 18 |
| 2011/12/13 6:00 | 0.01 | 4050 | 26.9 | | 25.4 | 101 | 2200 | 18 |
| 2011/12/13 8:00 | 0.01 | 4050 | 26.9 | | 25.3 | 101 | 2200 | 18 |
| 2011/12/13 10:00 | 0.01 | 4050 | 26.9 | | 25.2 | 101 | 2200 | 18 |
| 2011/12/13 12:00 | 0.01 | 4050 | 26.8 | | 25.3 | 101 | 2200 | 18 |
| 2011/12/13 14:00 | 0.01 | 4050 | 26.8 | | 25.3 | 101 | 2200 | 18 |
| 2011/12/13 16:00 | 0.01 | 4100 | 26.8 | | 25.3 | 101 | 2200 | 18 |
| 2011/12/13 18:00 | 0.01 | 4100 | 26.8 | | 25.3 | 101 | 2200 | 18 |
| 2011/12/13 20:00 | 0.01 | 4100 | 26.8 | | 25.2 | 101 | 2200 | 18 |
| 2011/12/13 22:00 | 0.01 | 4100 | 26.8 | | 25.2 | 102 | 2200 | 18 |
| 2011/12/14 0:00 | 0.01 | 4100 | 26.8 | | 25.4 | 101 | 2200 | 18 |
| 2011/12/14 2:00 | 0.01 | 4100 | 26.8 | | 25.1 | 101 | 2200 | 18 |
| 2011/12/14 4:00 | 0.01 | 4150 | 26.8 | | 25.3 | 101 | 2200 | 18 |
| 2011/12/14 6:00 | 0.01 | 4150 | 26.7 | | 25.3 | 101 | 2200 | 18 |
| 2011/12/14 8:00 | 0.01 | 4150 | 26.6 | | 25.3 | 101 | 2200 | 18 |
| 2011/12/14 10:00 | 0.01 | 4150 | 26.6 | | 25.2 | 101 | 2200 | 18 |
| 2011/12/14 12:00 | 0.01 | 4150 | 26.6 | | 25.2 | 101 | 2200 | 18 |
| 2011/12/14 14:00 | 0.01 | 4200 | 26.5 | | 25.2 | 101 | 2200 | 18 |
| 2011/12/14 16:00 | 0.01 | 4200 | 26.5 | | 25.2 | 101 | 2200 | 18 |
| 2011/12/14 18:00 | 0.01 | 4200 | 26.5 | | 25.2 | 101 | 2200 | 18 |
| 2011/12/14 20:00 | 0.01 | 4200 | 26.5 | | 25.2 | 101 | 2200 | 18 |
| 2011/12/14 22:00 | 0.01 | 4200 | 26.5 | | 25.1 | 101 | 2200 | 18 |
| 2011/12/15 0:00 | 0.01 | 4200 | 26.5 | | 25.2 | 100 | 2200 | 18 |
| 2011/12/15 2:00 | 0.01 | 4000 | 26.6 | | 25.3 | 100 | 2200 | 18 |
| 2011/12/15 4:00 | 0.01 | 4000 | 26.6 | | 25.3 | 100 | 2200 | 18 |
| 2011/12/15 6:00 | 0.01 | 4000 | 26.5 | | 25.2 | 100 | 2200 | 18 |
| 2011/12/15 8:00 | | | | | | | | |
| 2011/12/15 10:00 | | | | | | | | |
| 2011/12/15 12:00 | | | | | | | | |
| 2011/12/15 14:00 | | | | | | | | |
| 2011/12/15 16:00 | | | | | | | | |
| 2011/12/15 18:00 | | | | | | | | |
| 2011/12/15 20:00 | | | | | | | | |
| 2011/12/15 22:00 | | | | | | | | |
| 2011/12/16 0:00 | | | | | | | | |

D/W圧力について
 ・パーソナルエアロックドア開放中であるため、9/6 10:00 より記載せず

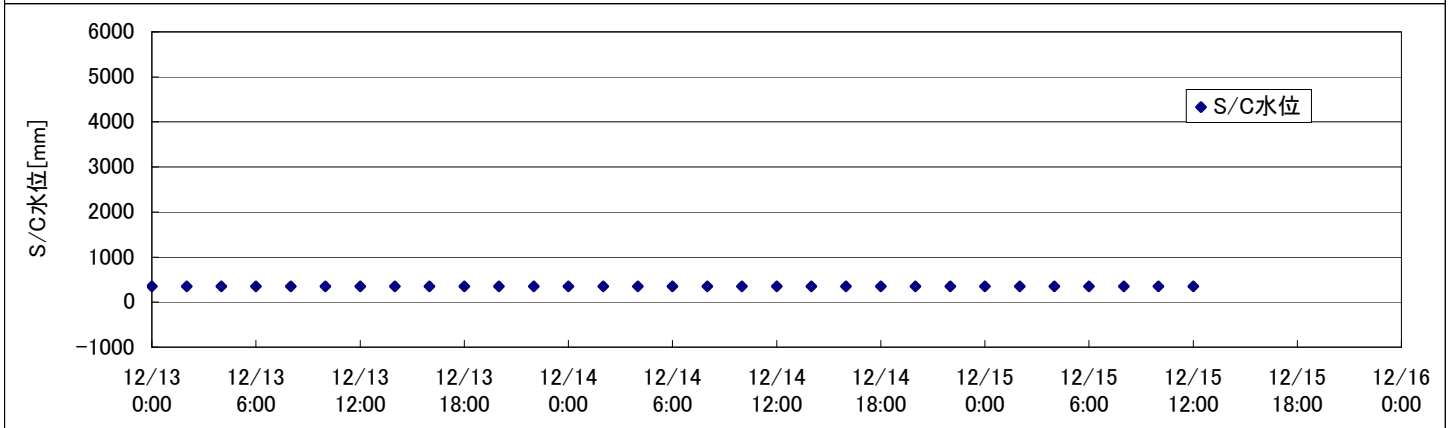
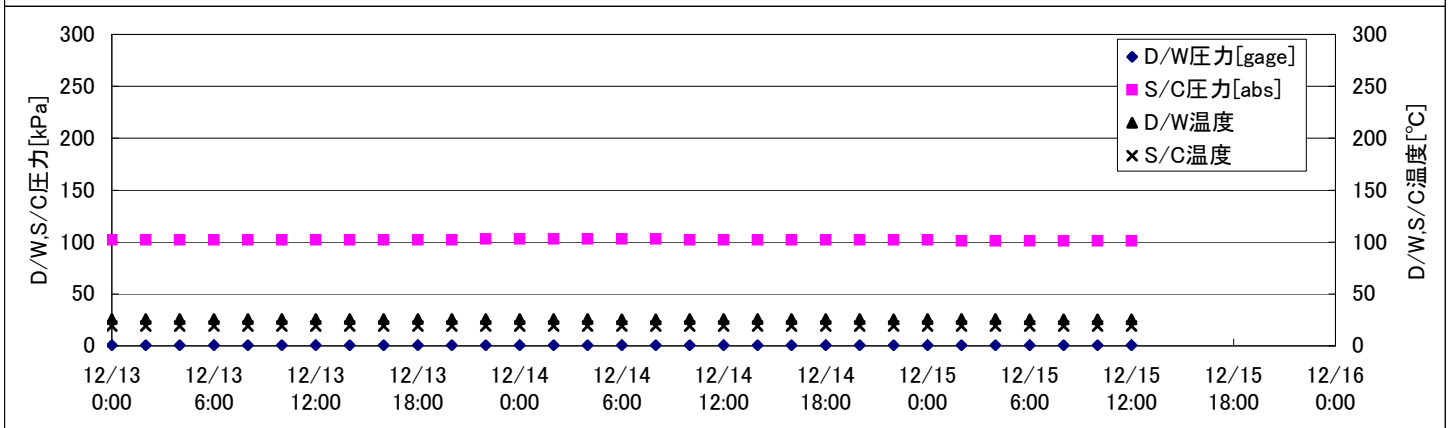
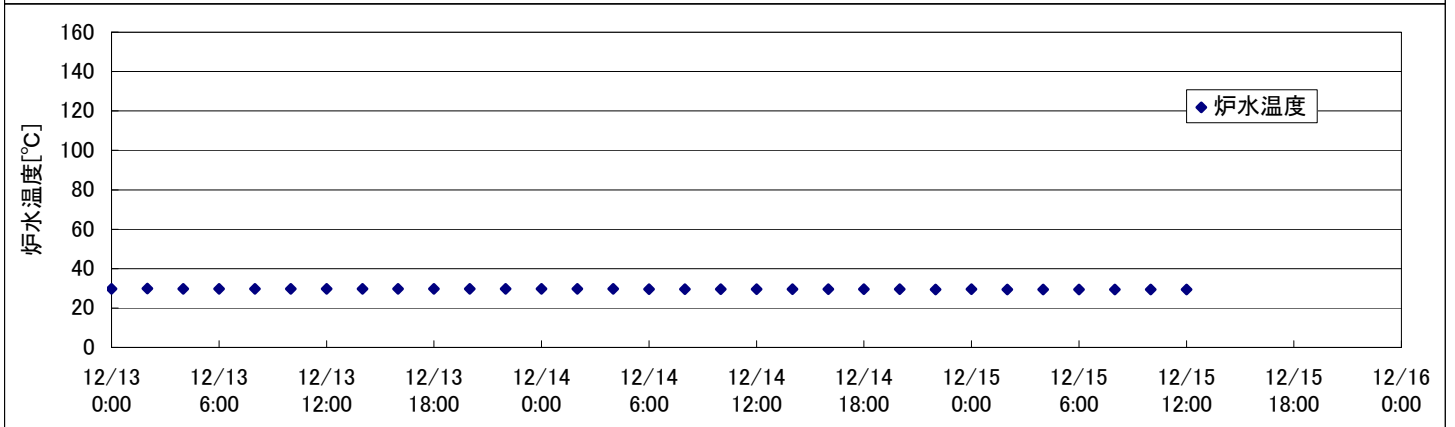
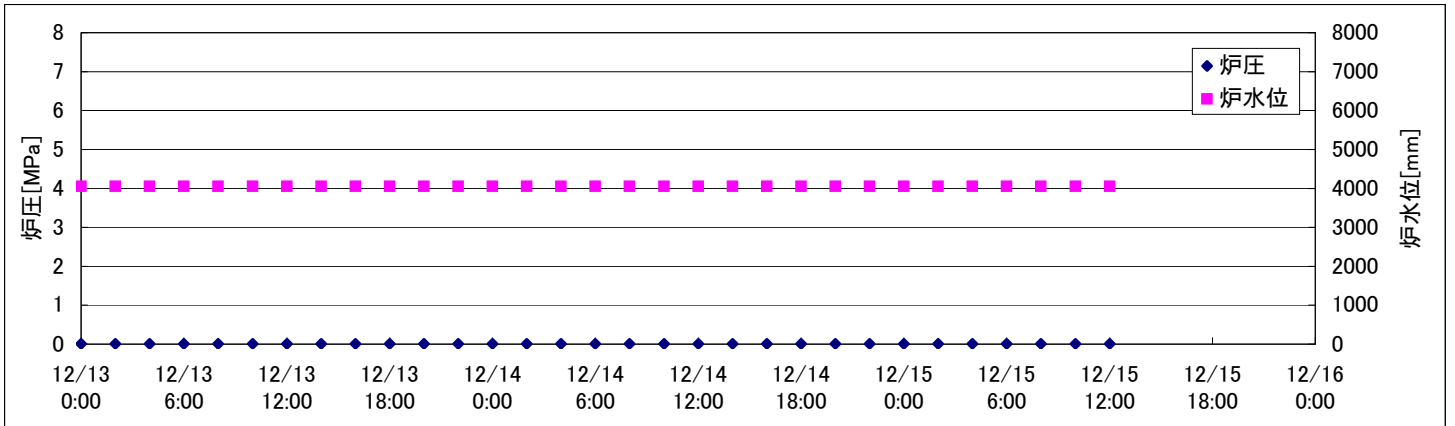
2F-1号機



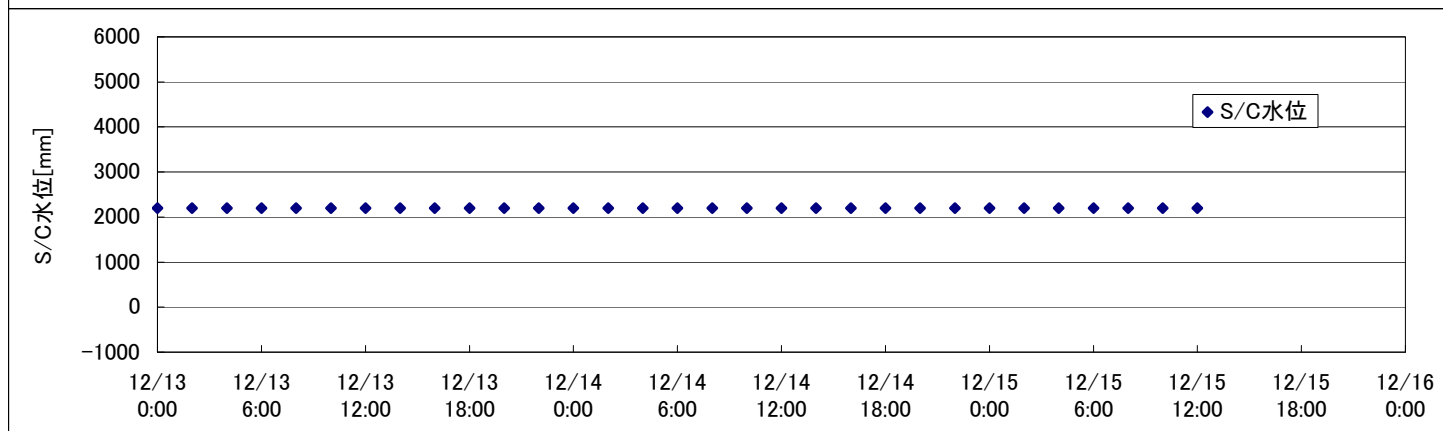
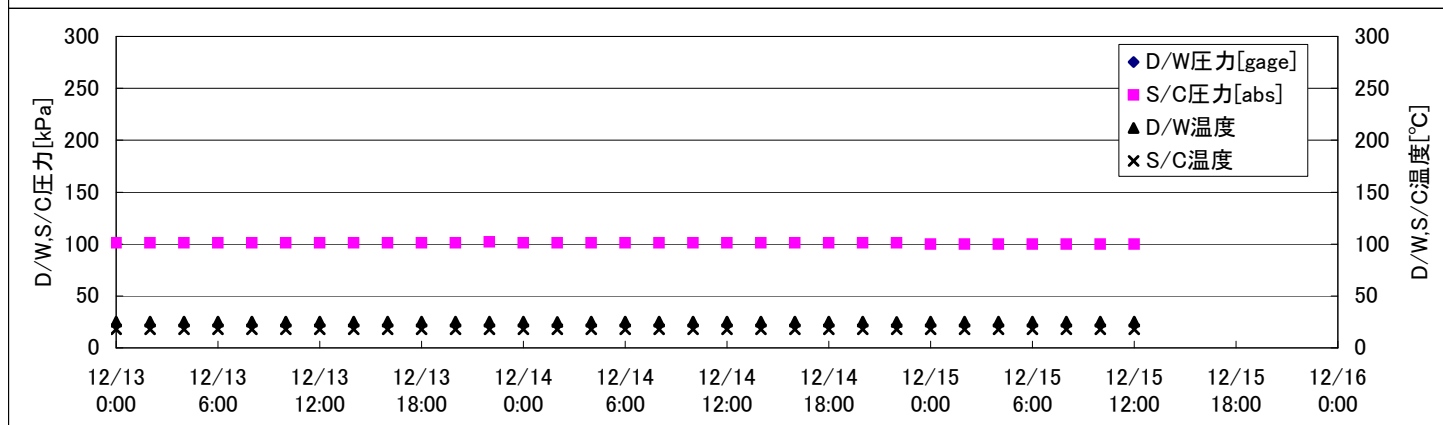
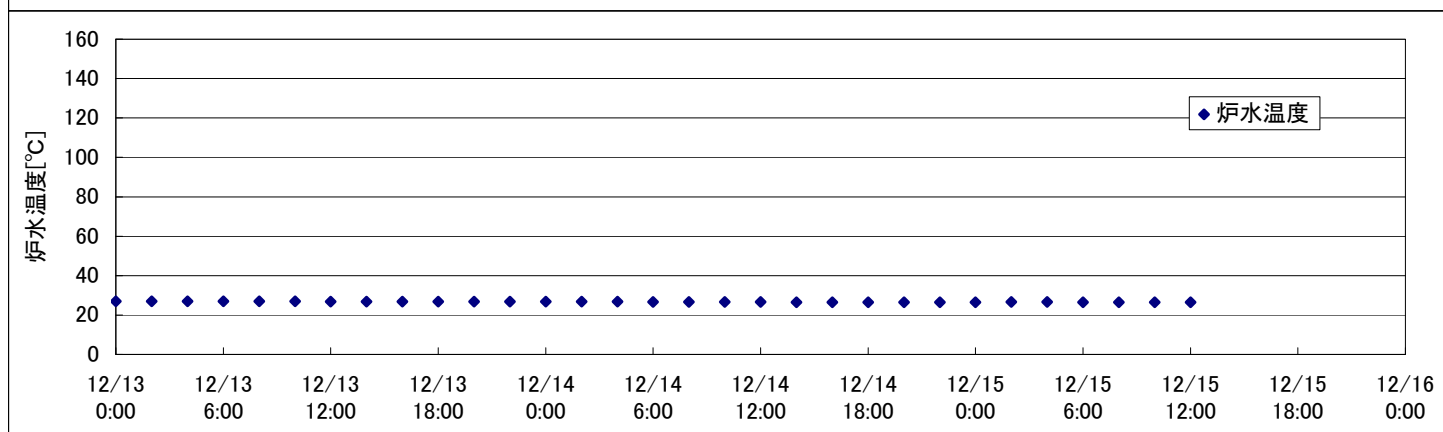
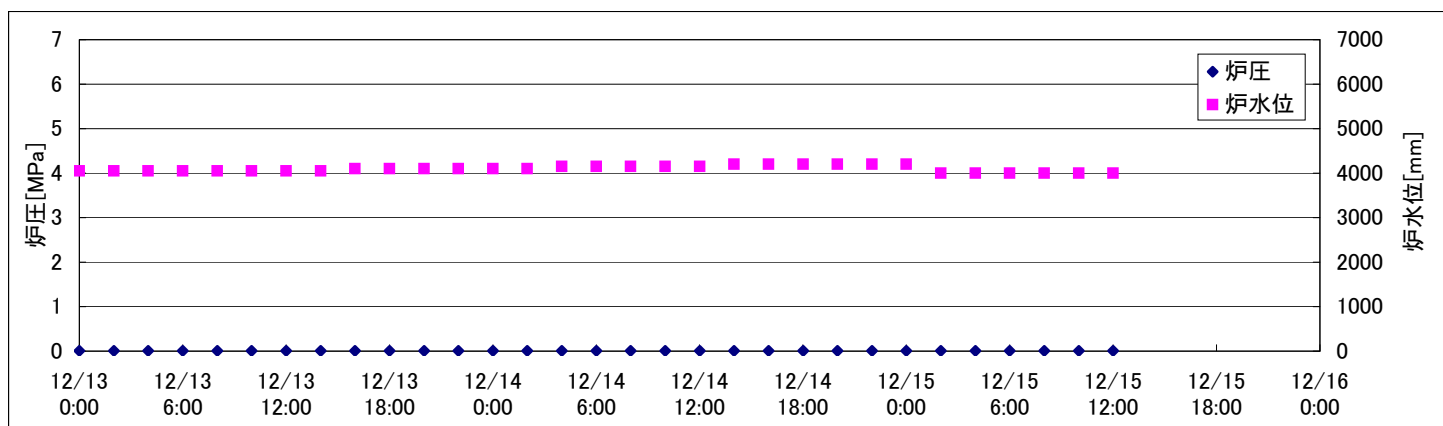
2F-2号機



2F-3号機



2F-4号機



2F-4号機

※燃料頂部(TAF)からの水位 = 炉水位 + 4200[mm]

| 時間 | 炉圧 [MPa (gage)] | 炉水位 [mm] 停止時 | 炉水温度[°C] | D/W圧力 [kPa(gage)] | D/W温度 [°C] | S/C圧力 [kPa(abs)] | S/C水位 [mm] | S/C温度 [°C] |
|-------------------------|-----------------------|--------------------|-------------|----------------------|---------------|---------------------|---------------|---------------|
| 2011/12/13 0:00 | 0.01 | 4050 | 27.0 | | 25.3 | 101 | 2200 | 18 |
| 2011/12/13 2:00 | 0.01 | 4050 | 27.0 | | 25.3 | 101 | 2200 | 18 |
| 2011/12/13 4:00 | 0.01 | 4050 | 27.0 | | 25.3 | 101 | 2200 | 18 |
| 2011/12/13 6:00 | 0.01 | 4050 | 26.9 | | 25.4 | 101 | 2200 | 18 |
| 2011/12/13 8:00 | 0.01 | 4050 | 26.9 | | 25.3 | 101 | 2200 | 18 |
| 2011/12/13 10:00 | 0.01 | 4050 | 26.9 | | 25.2 | 101 | 2200 | 18 |
| 2011/12/13 12:00 | 0.01 | 4050 | 26.8 | | 25.3 | 101 | 2200 | 18 |
| 2011/12/13 14:00 | 0.01 | 4050 | 26.8 | | 25.3 | 101 | 2200 | 18 |
| 2011/12/13 16:00 | 0.01 | 4100 | 26.8 | | 25.3 | 101 | 2200 | 18 |
| 2011/12/13 18:00 | 0.01 | 4100 | 26.8 | | 25.3 | 101 | 2200 | 18 |
| 2011/12/13 20:00 | 0.01 | 4100 | 26.8 | | 25.2 | 101 | 2200 | 18 |
| 2011/12/13 22:00 | 0.01 | 4100 | 26.8 | | 25.2 | 102 | 2200 | 18 |
| 2011/12/14 0:00 | 0.01 | 4100 | 26.8 | | 25.4 | 101 | 2200 | 18 |
| 2011/12/14 2:00 | 0.01 | 4100 | 26.8 | | 25.1 | 101 | 2200 | 18 |
| 2011/12/14 4:00 | 0.01 | 4150 | 26.8 | | 25.3 | 101 | 2200 | 18 |
| 2011/12/14 6:00 | 0.01 | 4150 | 26.7 | | 25.3 | 101 | 2200 | 18 |
| 2011/12/14 8:00 | 0.01 | 4150 | 26.6 | | 25.3 | 101 | 2200 | 18 |
| 2011/12/14 10:00 | 0.01 | 4150 | 26.6 | | 25.2 | 101 | 2200 | 18 |
| 2011/12/14 12:00 | 0.01 | 4150 | 26.6 | | 25.2 | 101 | 2200 | 18 |
| 2011/12/14 14:00 | 0.01 | 4200 | 26.5 | | 25.2 | 101 | 2200 | 18 |
| 2011/12/14 16:00 | 0.01 | 4200 | 26.5 | | 25.2 | 101 | 2200 | 18 |
| 2011/12/14 18:00 | 0.01 | 4200 | 26.5 | | 25.2 | 101 | 2200 | 18 |
| 2011/12/14 20:00 | 0.01 | 4200 | 26.5 | | 25.2 | 101 | 2200 | 18 |
| 2011/12/14 22:00 | 0.01 | 4200 | 26.5 | | 25.1 | 101 | 2200 | 18 |
| 2011/12/15 0:00 | 0.01 | 4200 | 26.5 | | 25.2 | 100 | 2200 | 18 |
| 2011/12/15 2:00 | 0.01 | 4000 | 26.6 | | 25.3 | 100 | 2200 | 18 |
| 2011/12/15 4:00 | 0.01 | 4000 | 26.6 | | 25.3 | 100 | 2200 | 18 |
| 2011/12/15 6:00 | 0.01 | 4000 | 26.5 | | 25.2 | 100 | 2200 | 18 |
| 2011/12/15 8:00 | 0.01 | 4000 | 26.5 | | 25.2 | 100 | 2200 | 18 |
| 2011/12/15 10:00 | 0.01 | 4000 | 26.5 | | 25.2 | 100 | 2200 | 18 |
| 2011/12/15 12:00 | 0.01 | 4000 | 26.5 | | 25.2 | 100 | 2200 | 18 |
| 2011/12/15 14:00 | | | | | | | | |
| 2011/12/15 16:00 | | | | | | | | |
| 2011/12/15 18:00 | | | | | | | | |
| 2011/12/15 20:00 | | | | | | | | |
| 2011/12/15 22:00 | | | | | | | | |
| 2011/12/16 0:00 | | | | | | | | |

D/W圧力について

・パーソナルエアロックドア開放中であるため、9/6 10:00 より記載せず