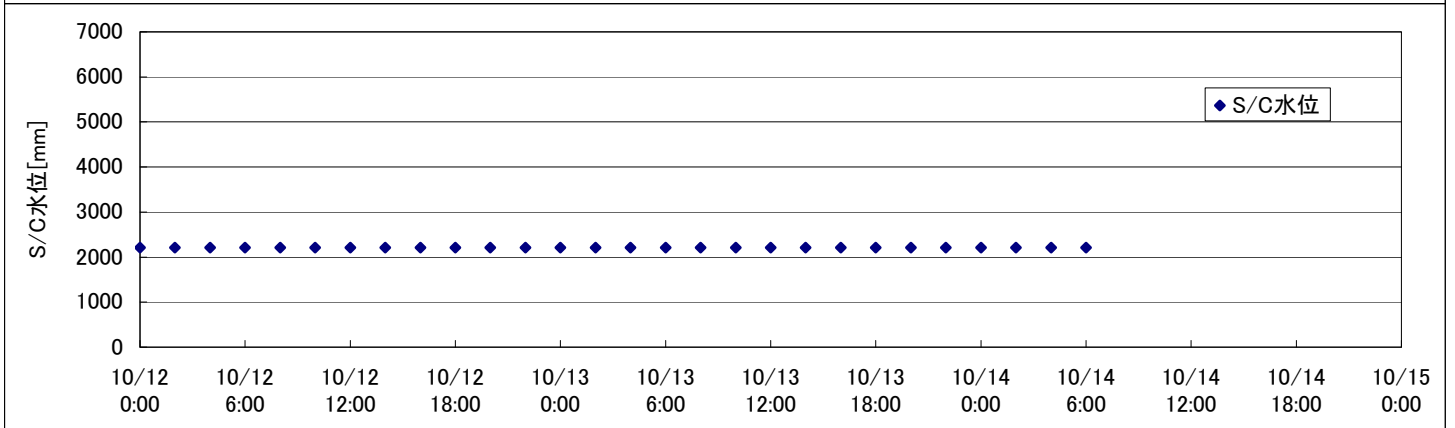
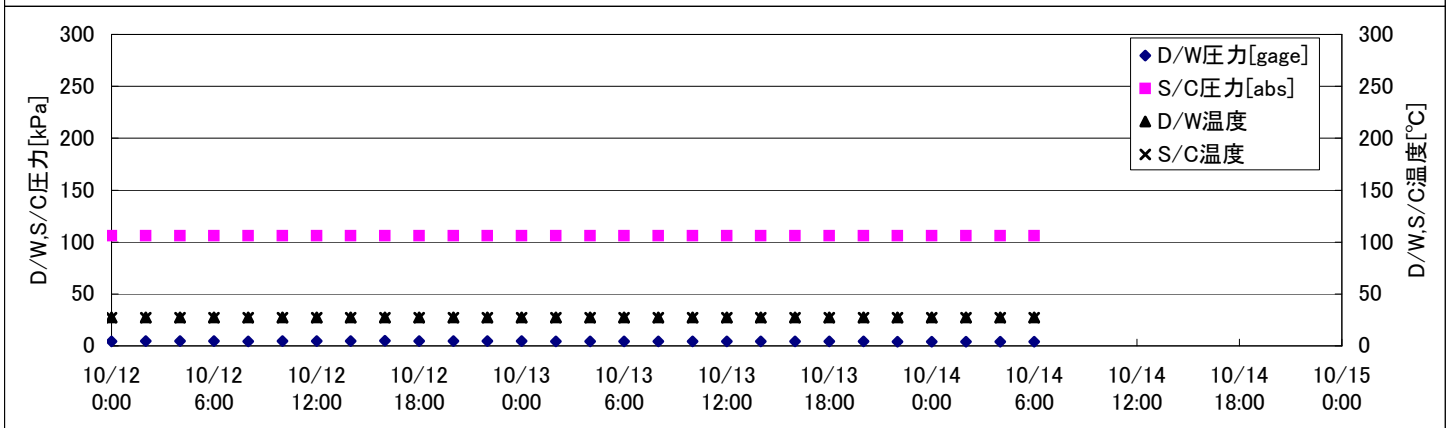
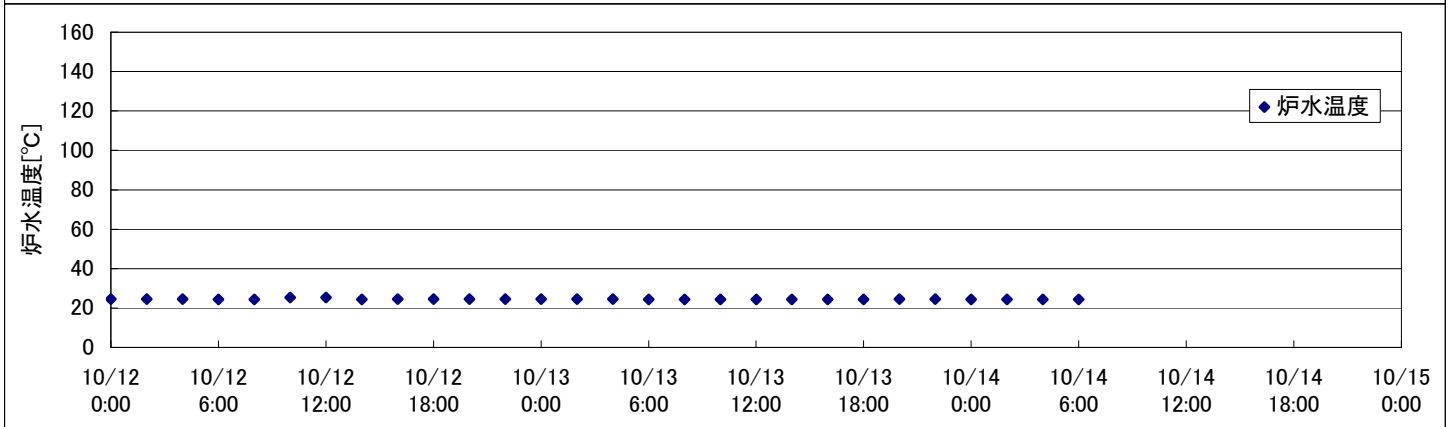
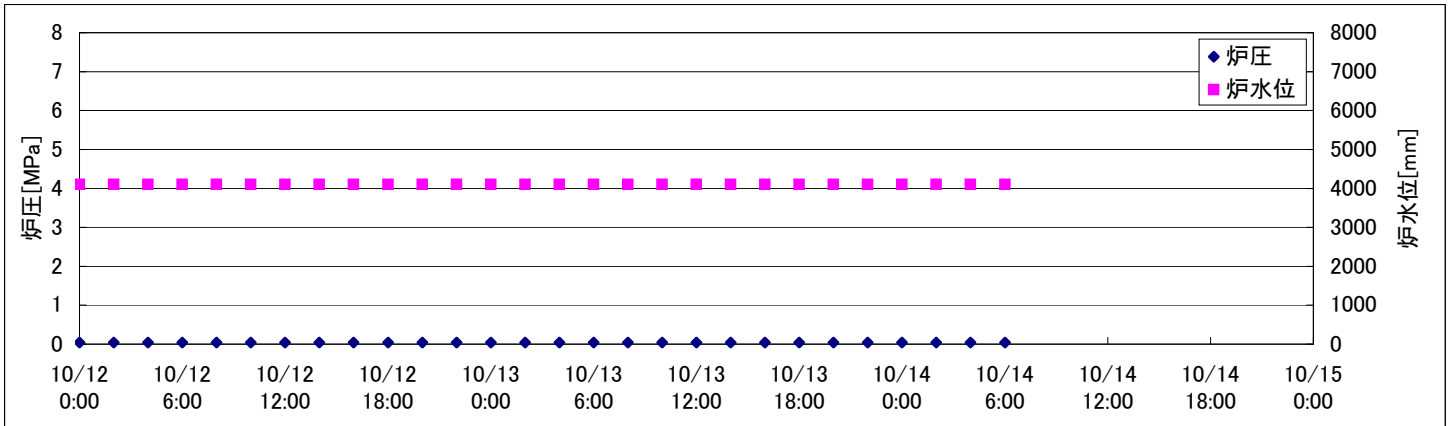
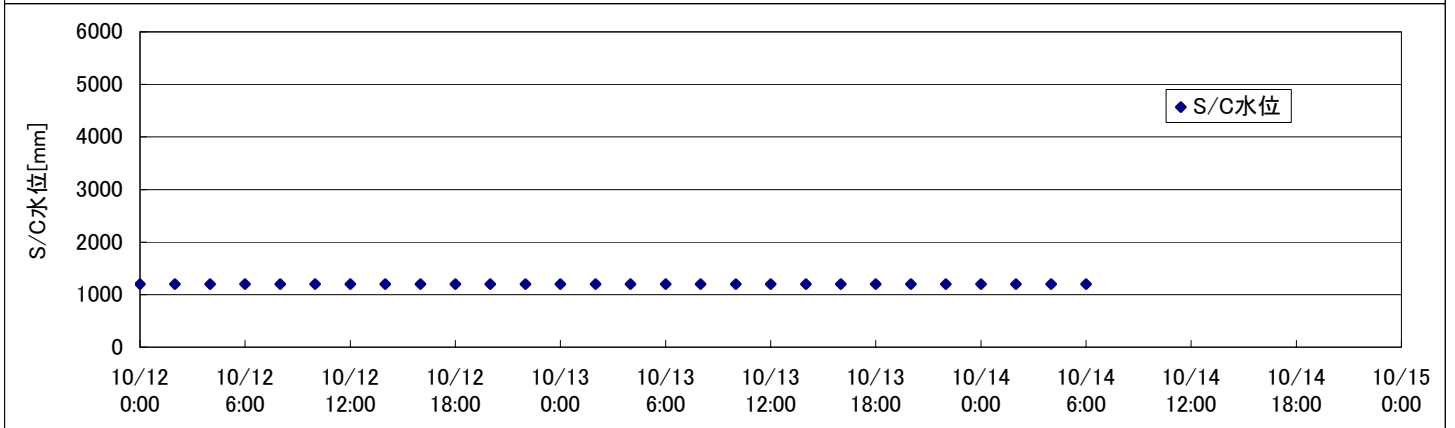
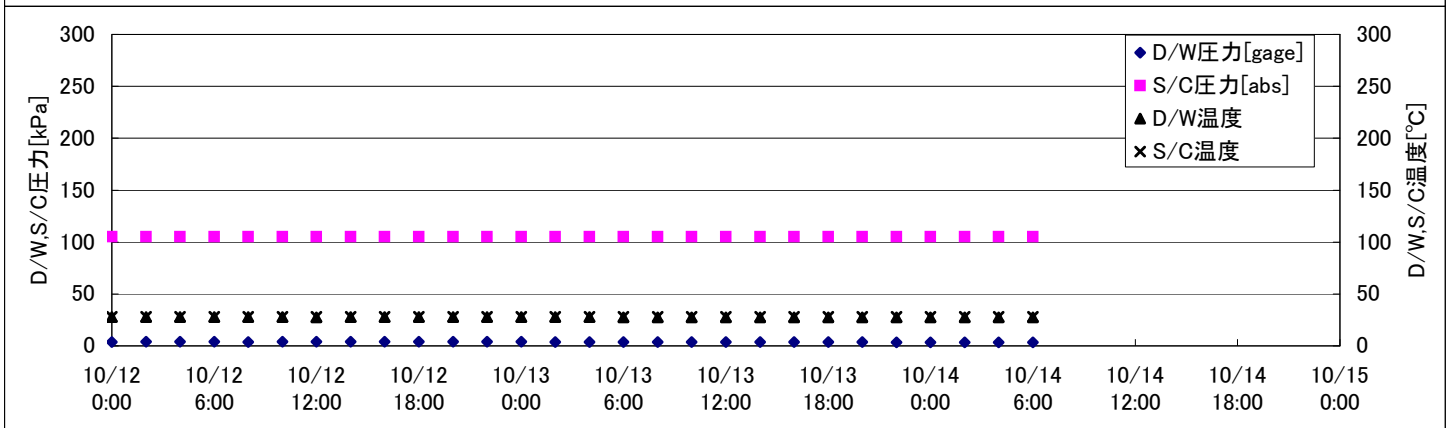
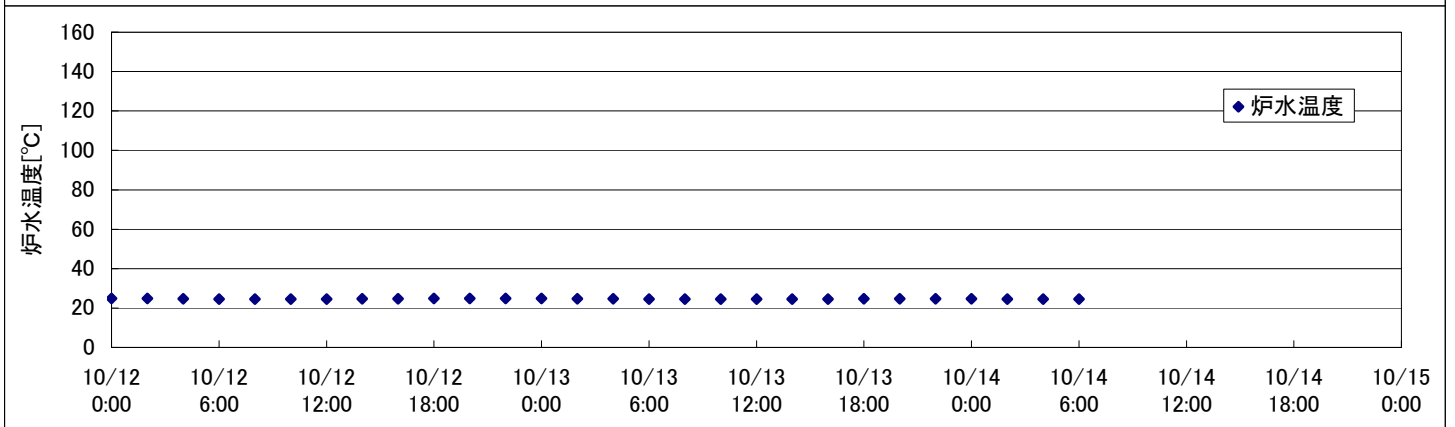
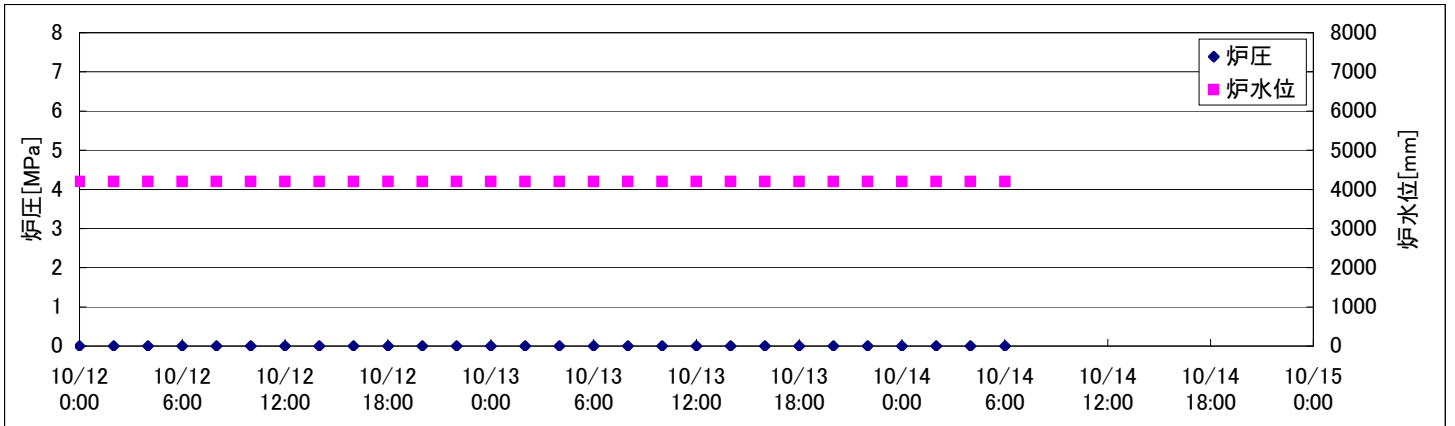


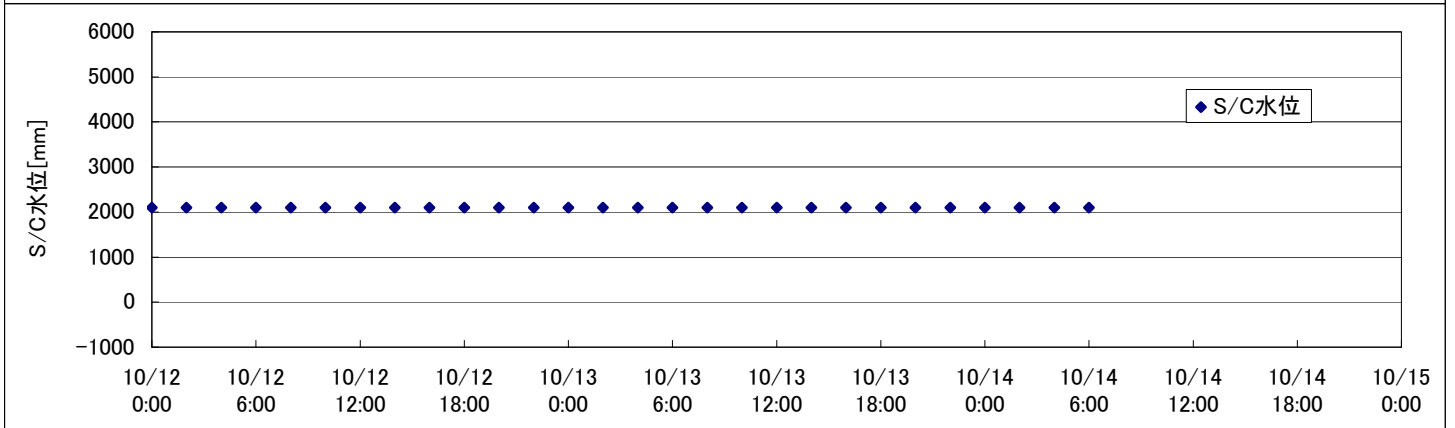
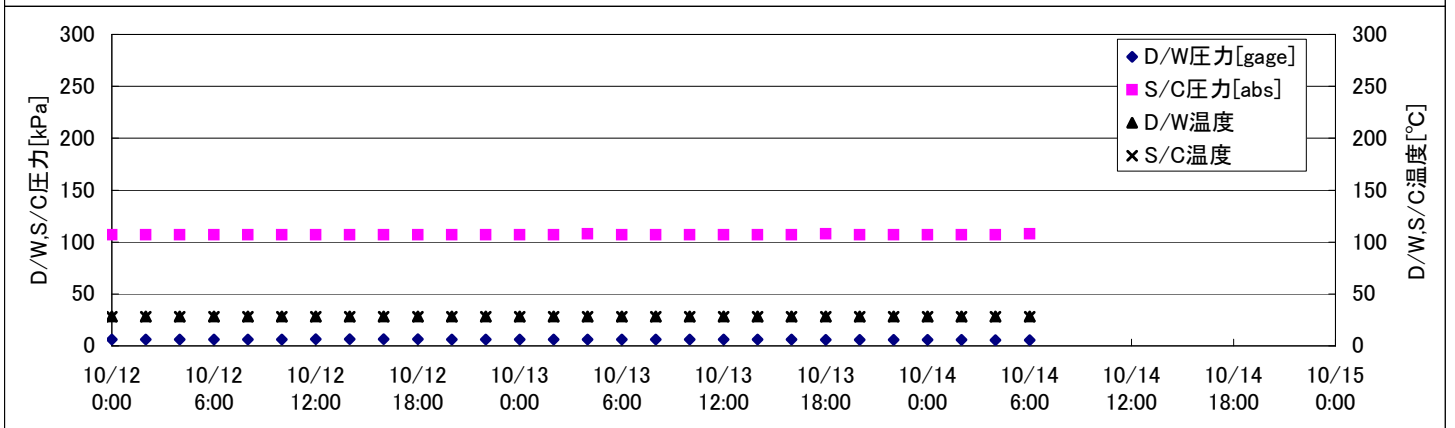
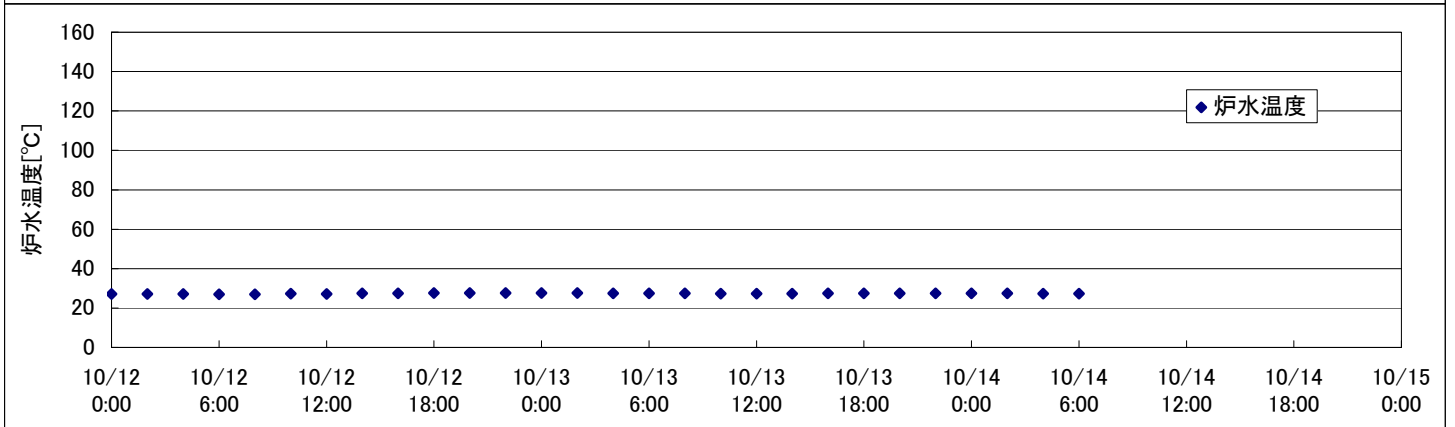
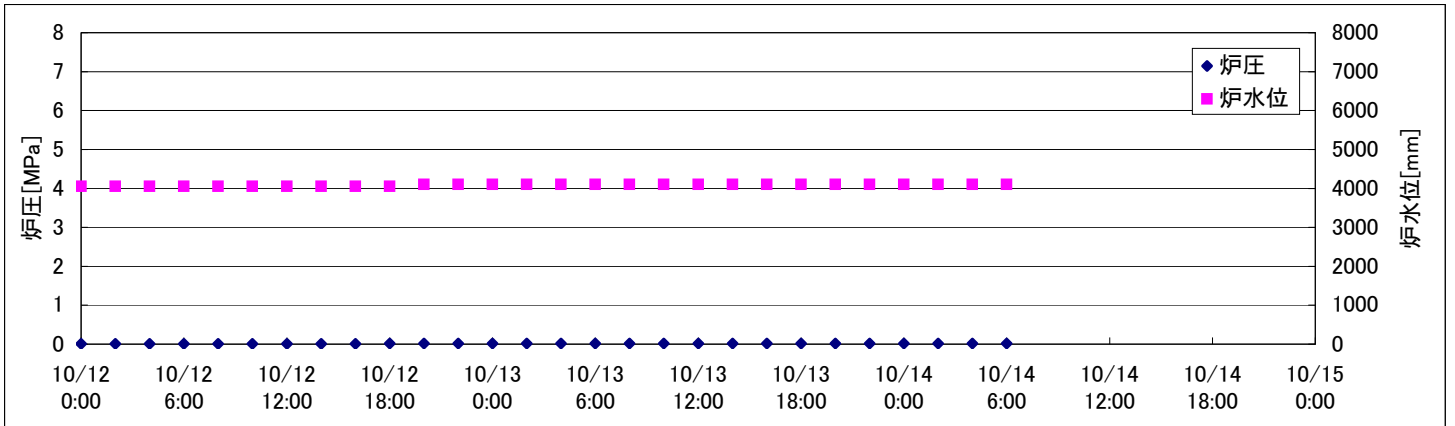
2F-1号機



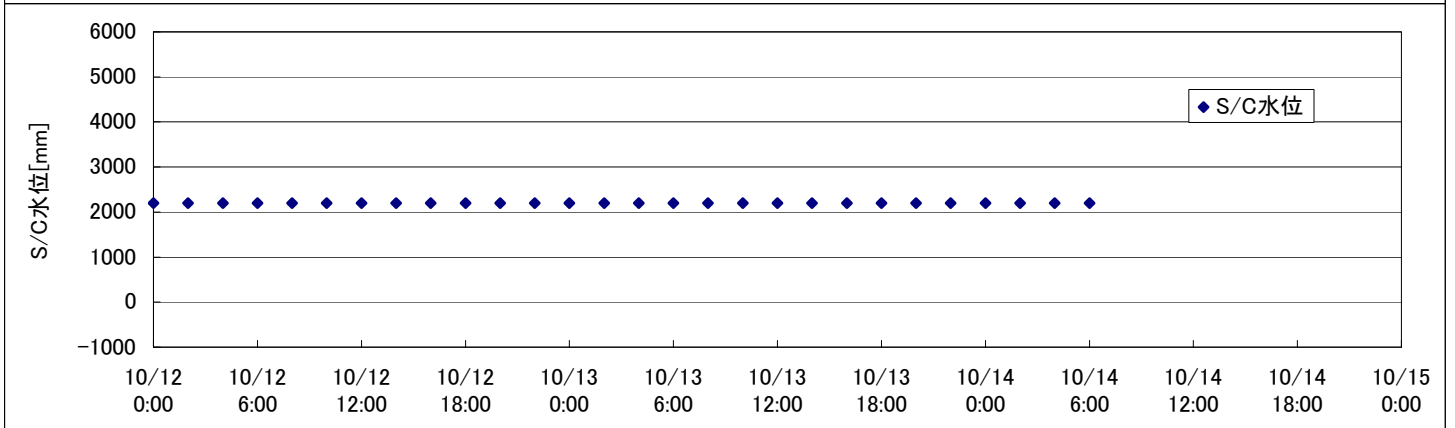
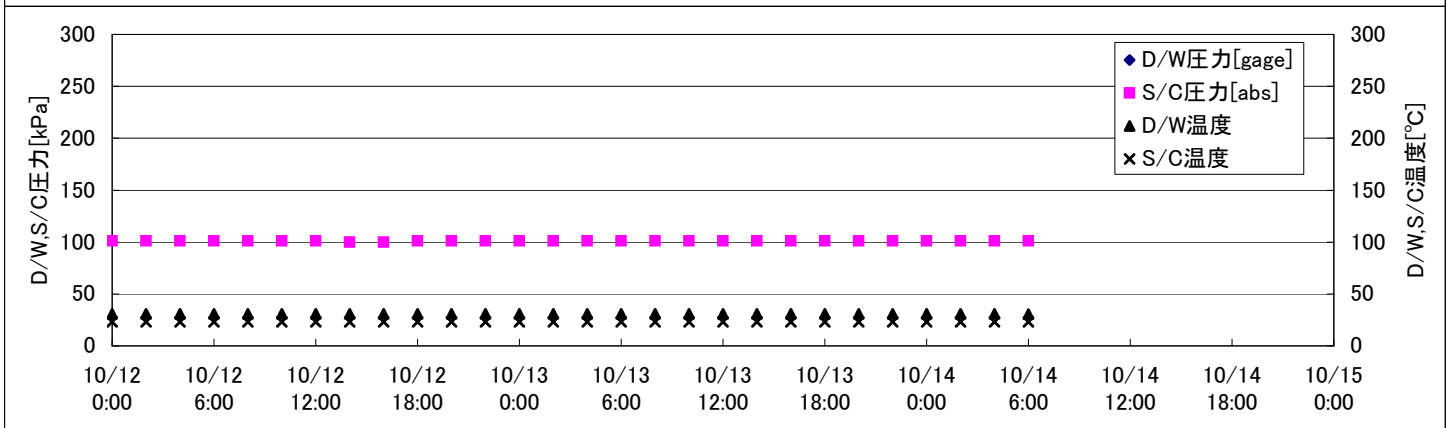
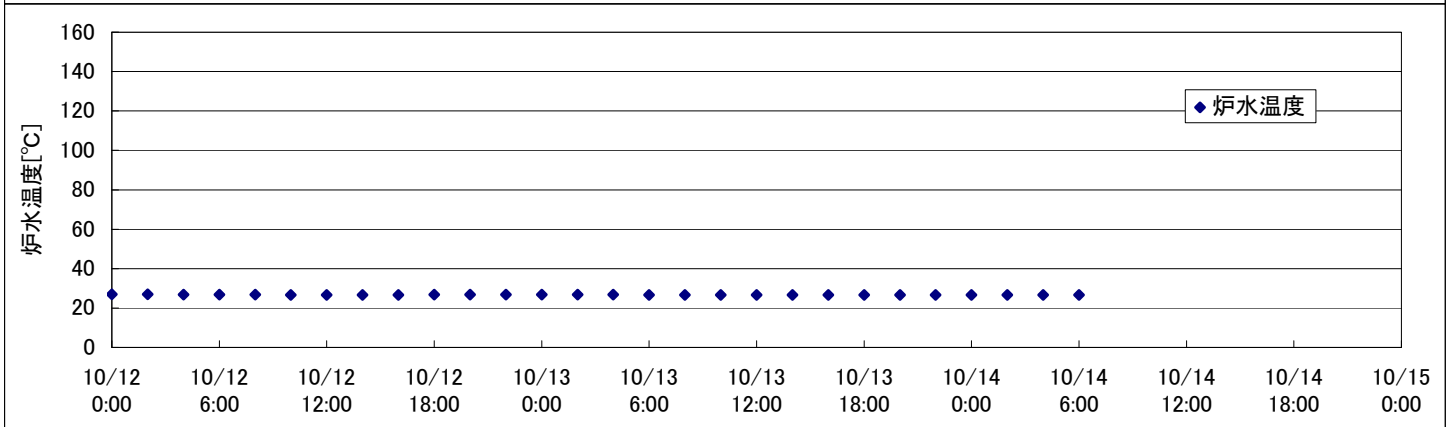
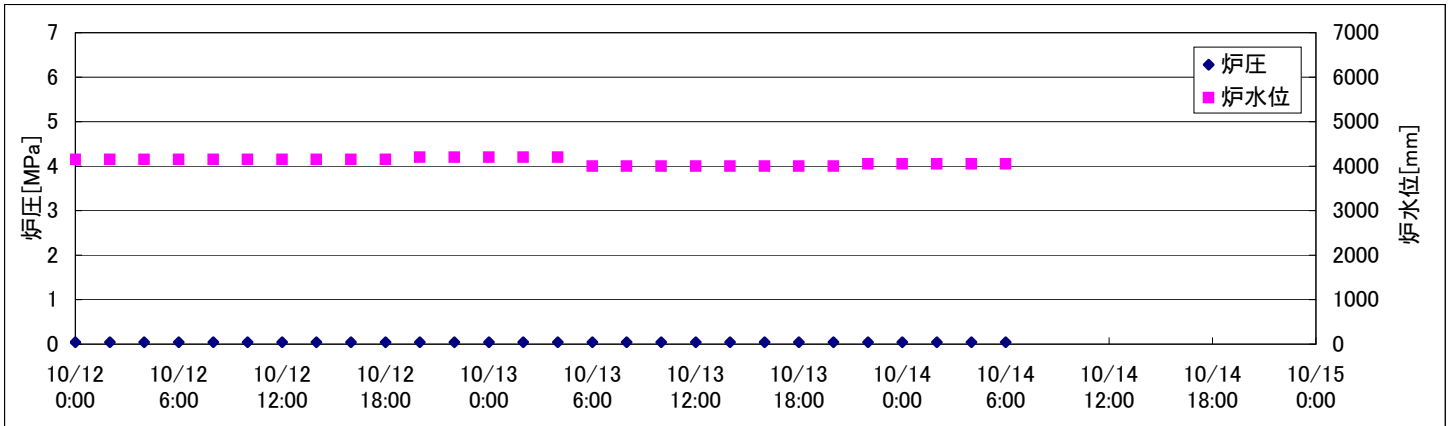
2F-2号機



2F-3号機



2F-4号機



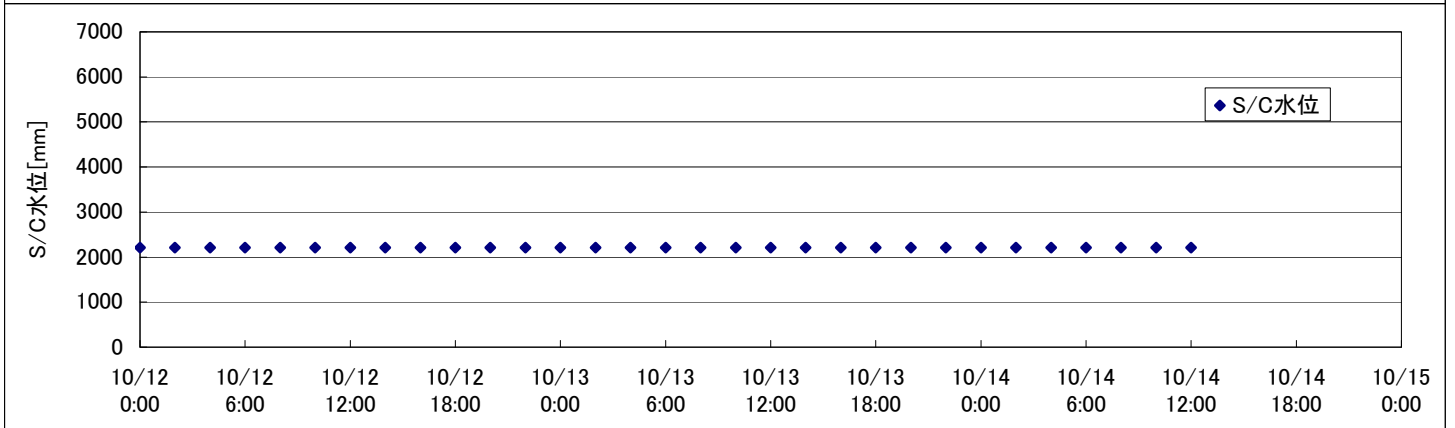
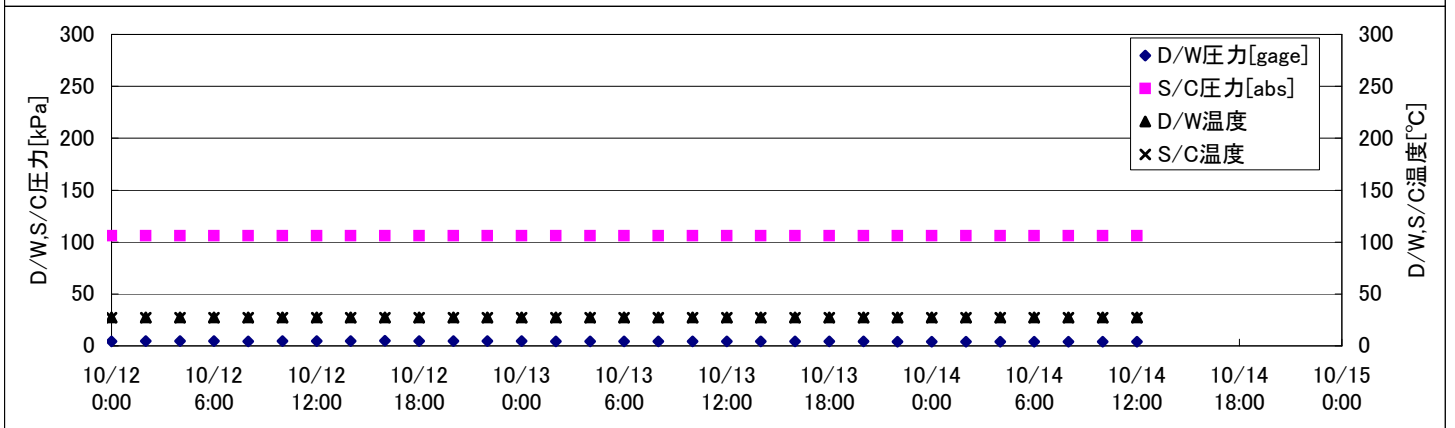
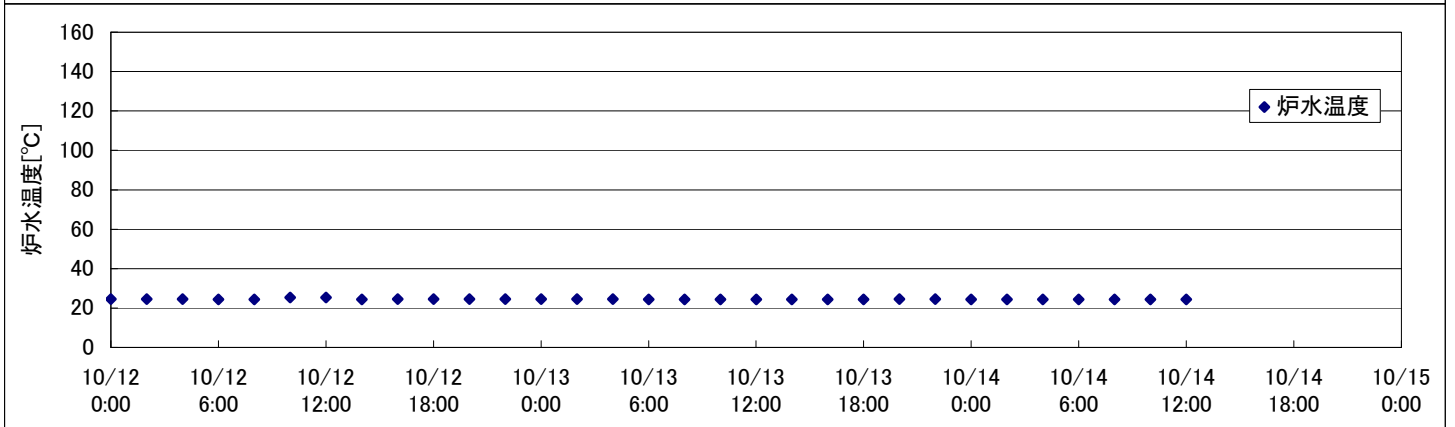
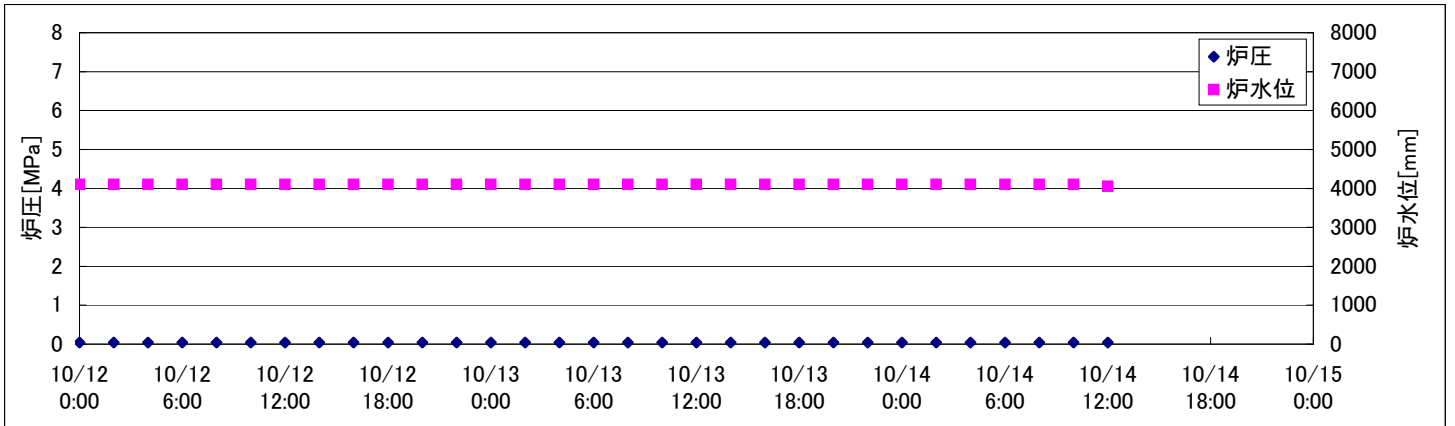
2F-4号機

※燃料頂部(TAF)からの水位 = 炉水位 + 4200[mm]

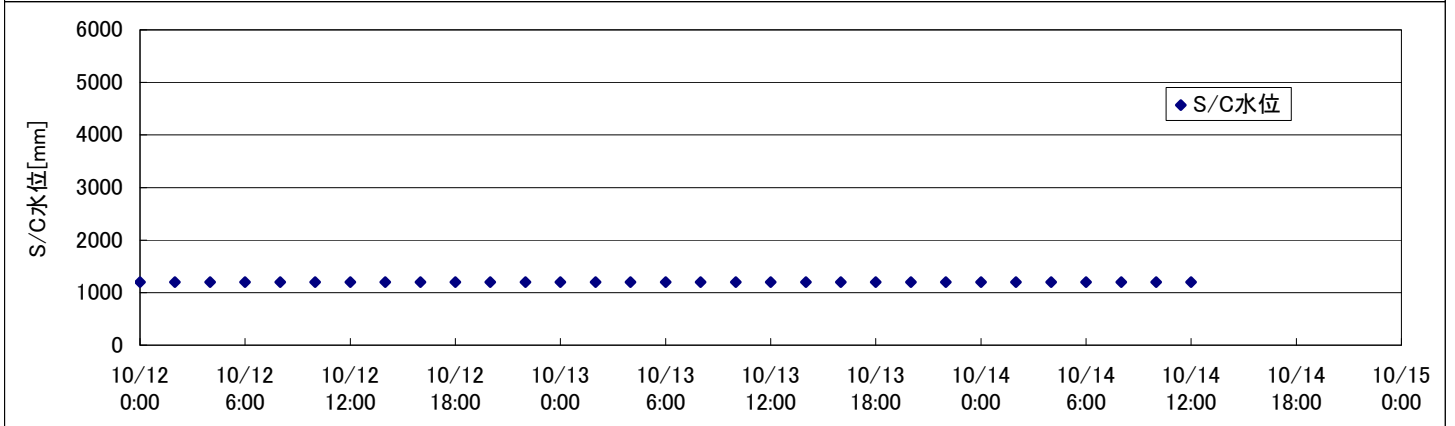
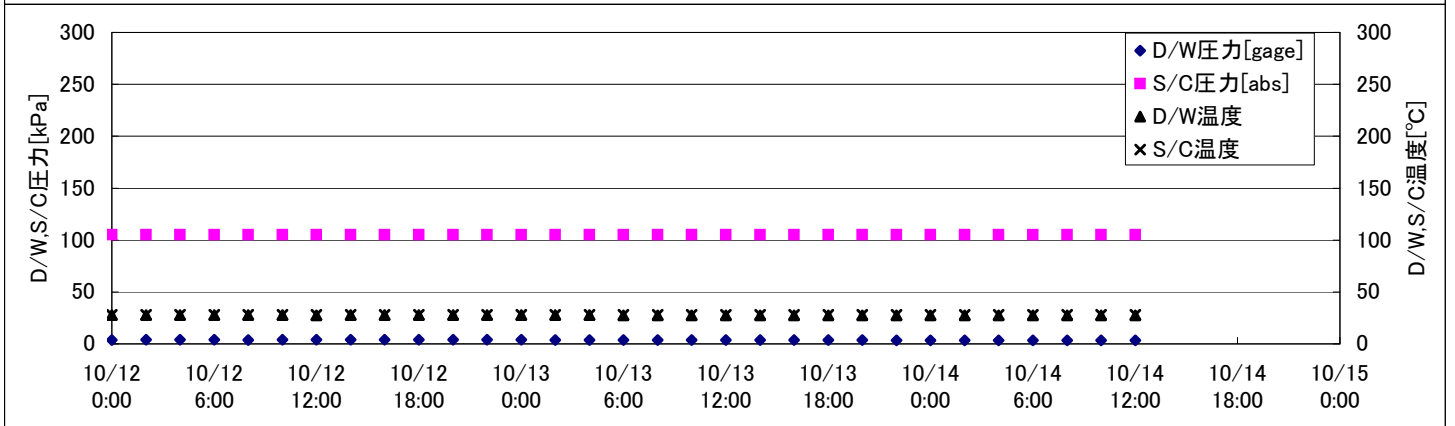
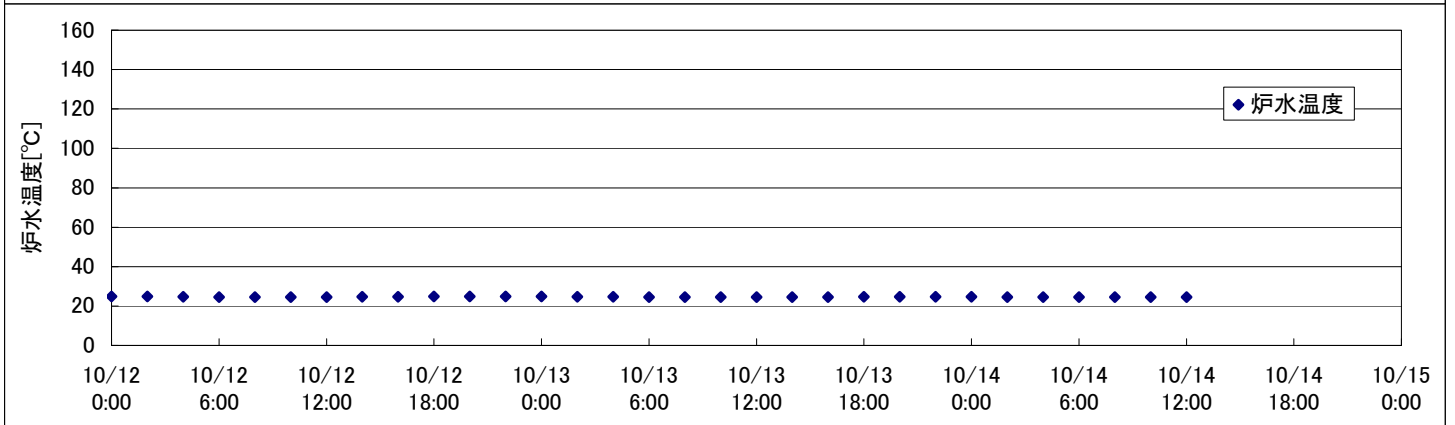
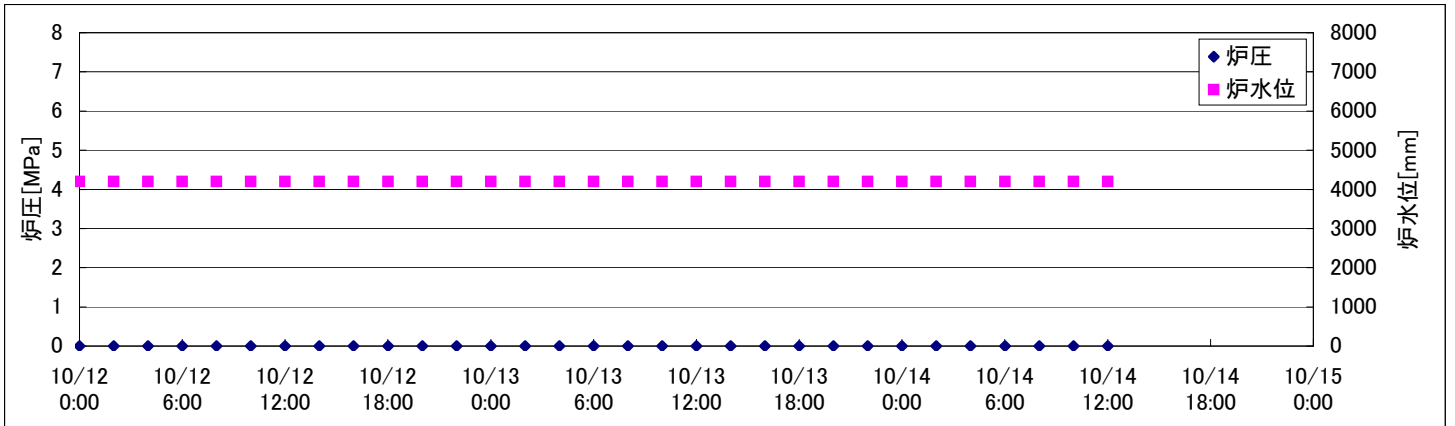
時間	炉圧 [MPa (gage)]	炉水位 [mm] 停止時	炉水温度[°C]	D/W圧力 [kPa(gage)]	D/W温度 [°C]	S/C圧力 [kPa(abs)]	S/C水位 [mm]	S/C温度 [°C]
2011/10/12 0:00	0.04	4150	26.9		30.7	101	2200	23
2011/10/12 2:00	0.04	4150	26.9		30.7	101	2200	23
2011/10/12 4:00	0.04	4150	26.8		30.7	101	2200	23
2011/10/12 6:00	0.04	4150	26.8		30.7	101	2200	23
2011/10/12 8:00	0.04	4150	26.8		30.7	101	2200	23
2011/10/12 10:00	0.04	4150	26.7		30.7	101	2200	23
2011/10/12 12:00	0.04	4150	26.6		30.7	101	2200	23
2011/10/12 14:00	0.04	4150	26.6		30.7	100	2200	23
2011/10/12 16:00	0.04	4150	26.7		30.7	100	2200	23
2011/10/12 18:00	0.04	4150	26.8		30.7	101	2200	23
2011/10/12 20:00	0.04	4200	26.8		30.7	101	2200	23
2011/10/12 22:00	0.04	4200	26.8		30.7	101	2200	23
2011/10/13 0:00	0.04	4200	26.8		30.7	101	2200	23
2011/10/13 2:00	0.04	4200	26.8		30.7	101	2200	23
2011/10/13 4:00	0.04	4200	26.8		30.7	101	2200	23
2011/10/13 6:00	0.04	4000	26.7		30.7	101	2200	23
2011/10/13 8:00	0.04	4000	26.7		30.7	101	2200	23
2011/10/13 10:00	0.04	4000	26.6		30.7	101	2200	23
2011/10/13 12:00	0.04	4000	26.6		30.7	101	2200	23
2011/10/13 14:00	0.04	4000	26.6		30.7	101	2200	23
2011/10/13 16:00	0.04	4000	26.6		30.8	101	2200	23
2011/10/13 18:00	0.04	4000	26.7		30.7	101	2200	23
2011/10/13 20:00	0.04	4000	26.7		30.7	101	2200	23
2011/10/13 22:00	0.04	4050	26.7		30.7	101	2200	23
2011/10/14 0:00	0.04	4050	26.7		30.7	101	2200	23
2011/10/14 2:00	0.04	4050	26.7		30.7	101	2200	23
2011/10/14 4:00	0.04	4050	26.6		30.7	101	2200	23
2011/10/14 6:00	0.04	4050	26.6		30.6	101	2200	23
2011/10/14 8:00								
2011/10/14 10:00								
2011/10/14 12:00								
2011/10/14 14:00								
2011/10/14 16:00								
2011/10/14 18:00								
2011/10/14 20:00								
2011/10/14 22:00								
2011/10/15 0:00								

D/W圧力について
・パーソナルエアロックドア開放中であるため、9/6 10:00 より記載せず

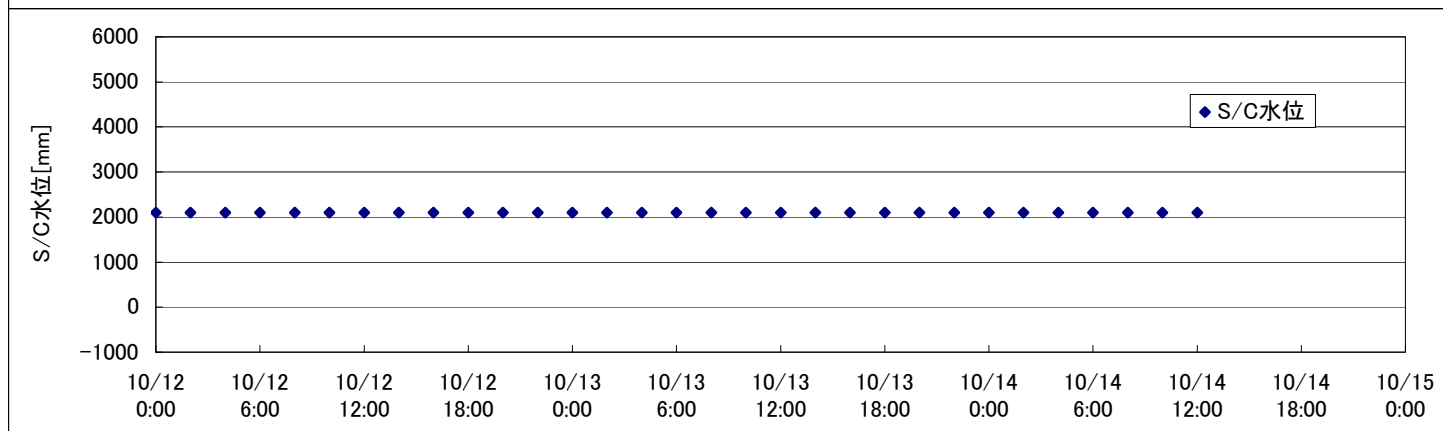
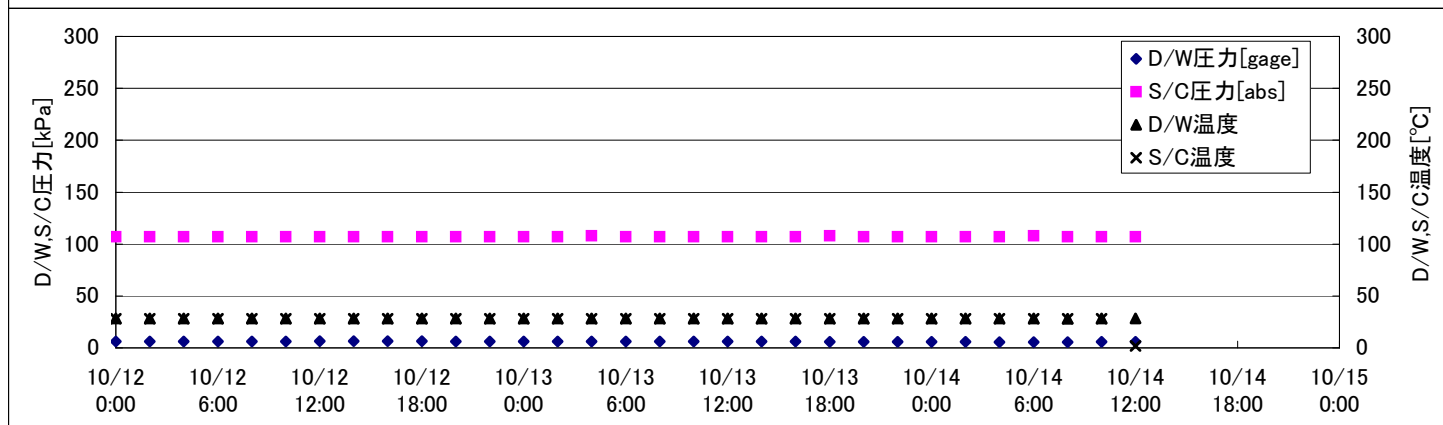
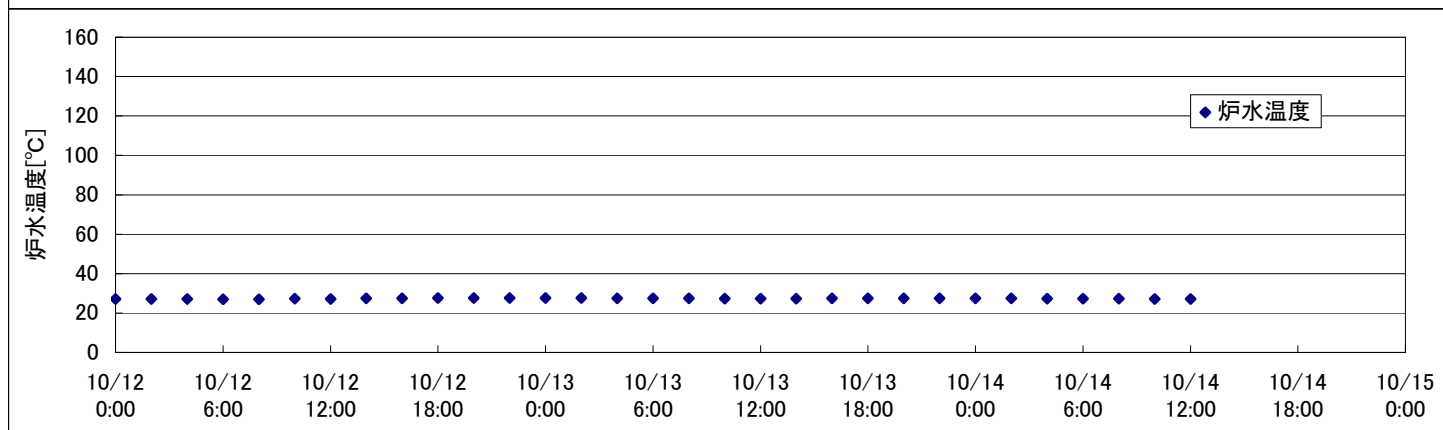
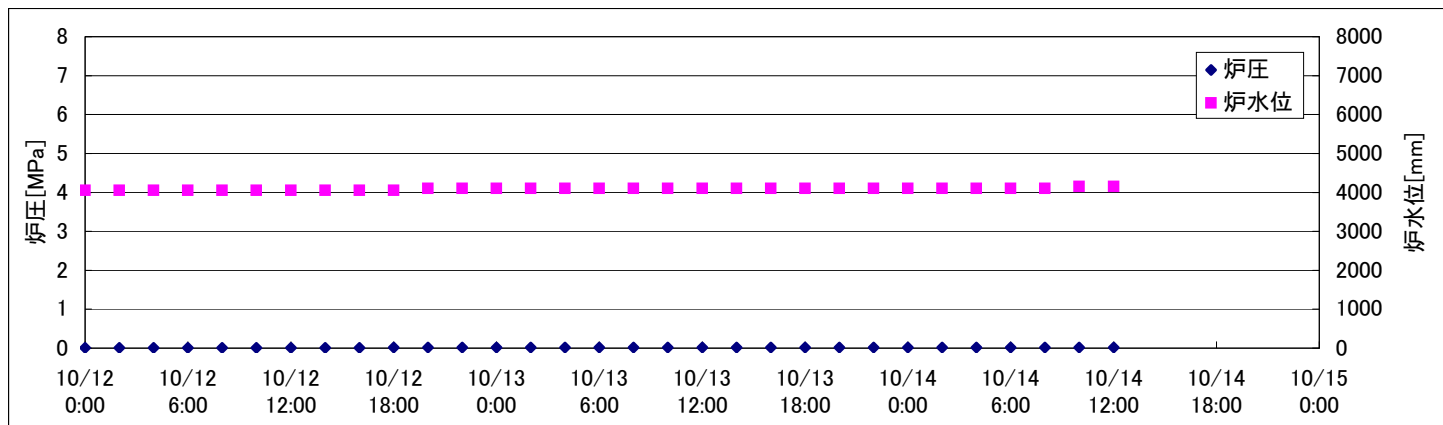
2F-1号機



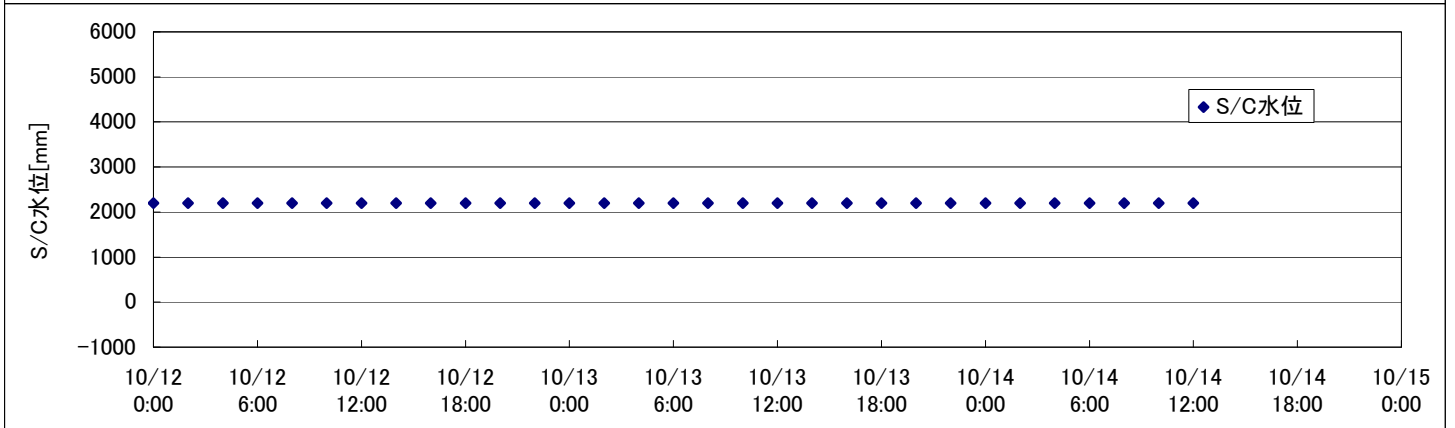
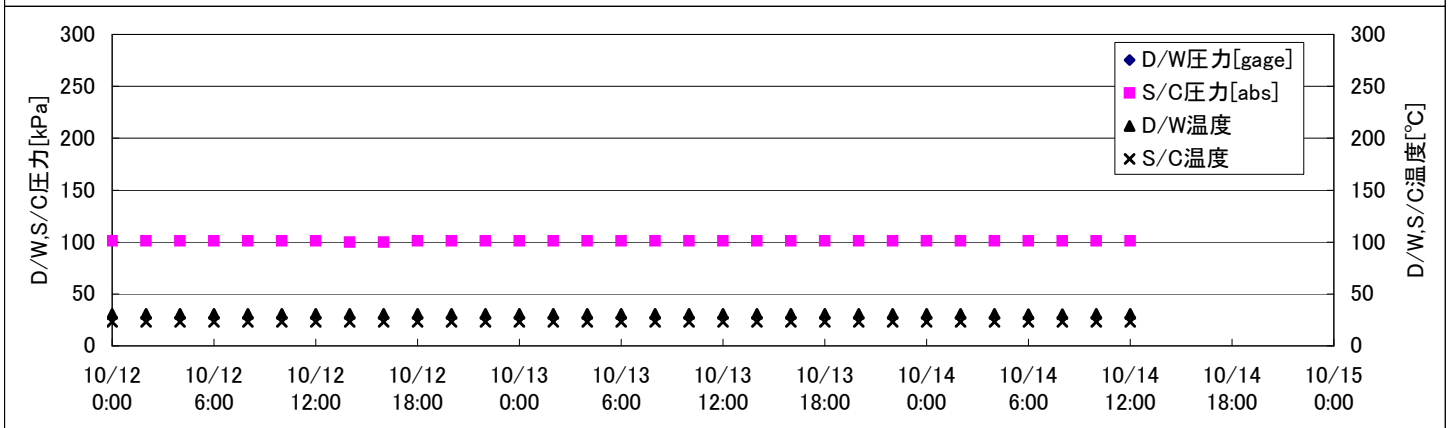
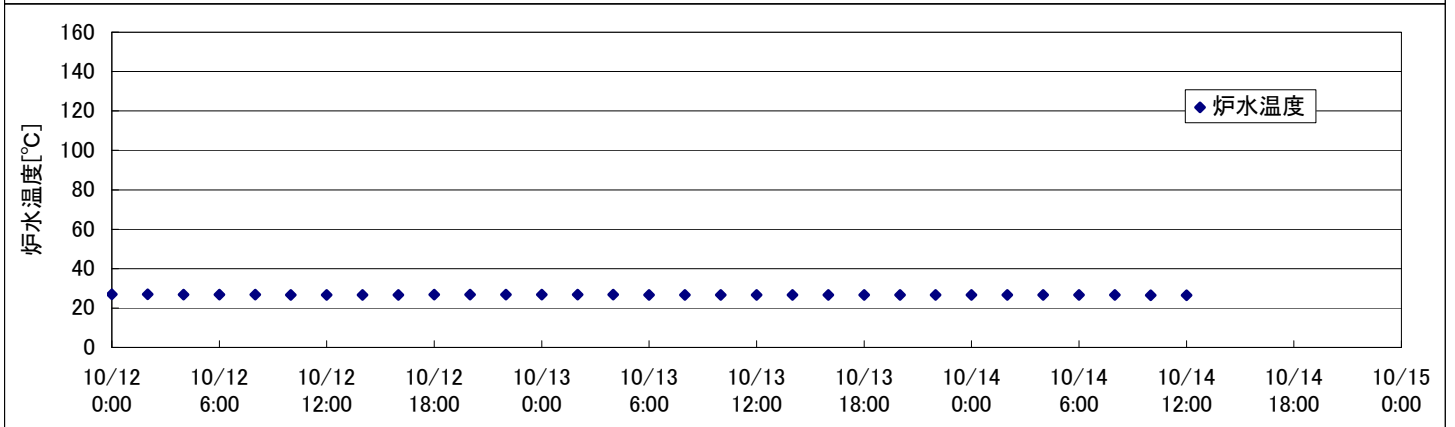
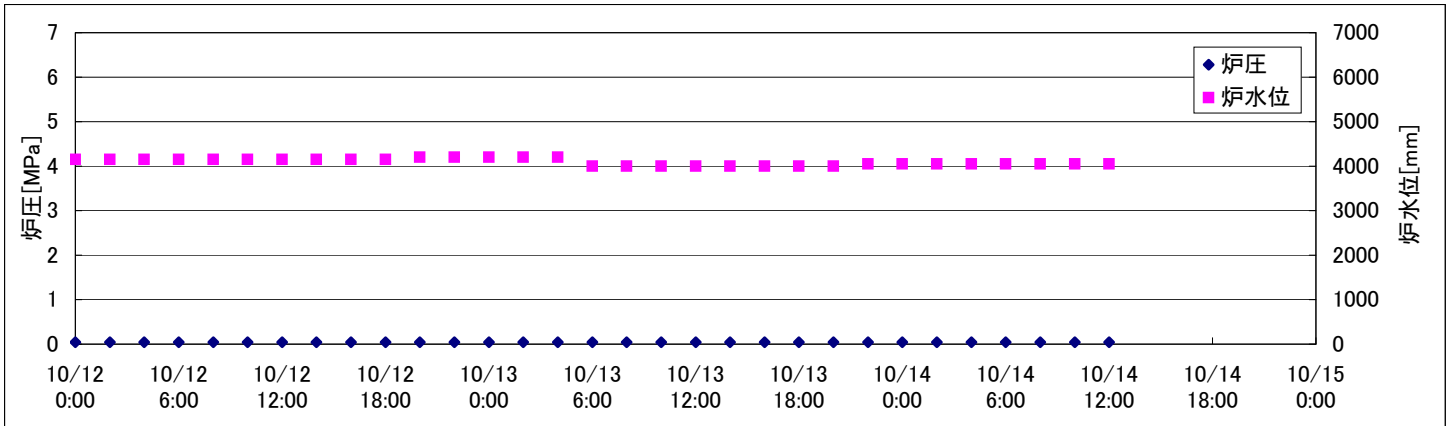
2F-2号機



2F-3号機



2F-4号機



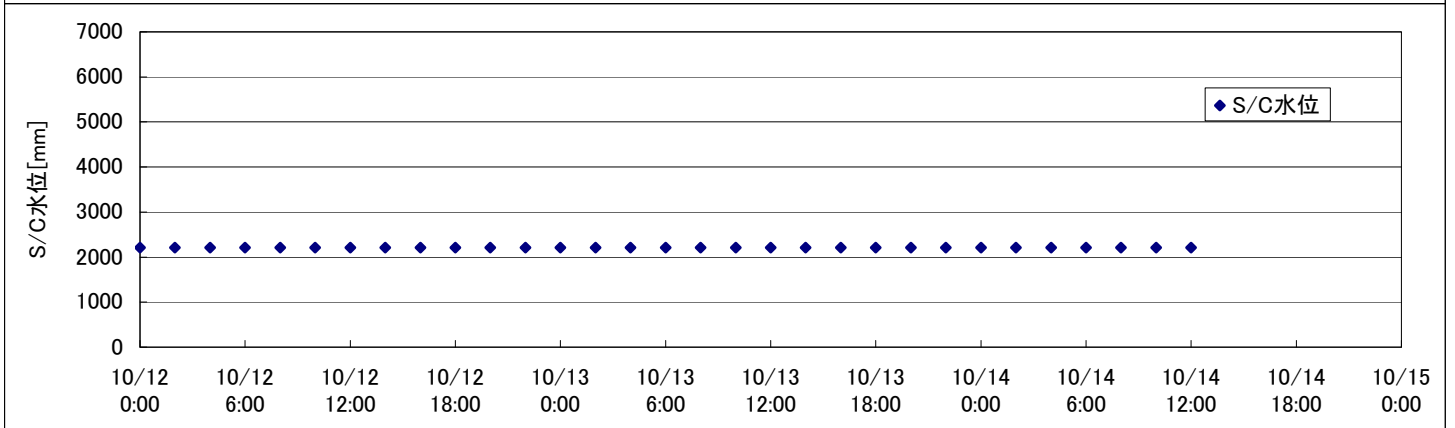
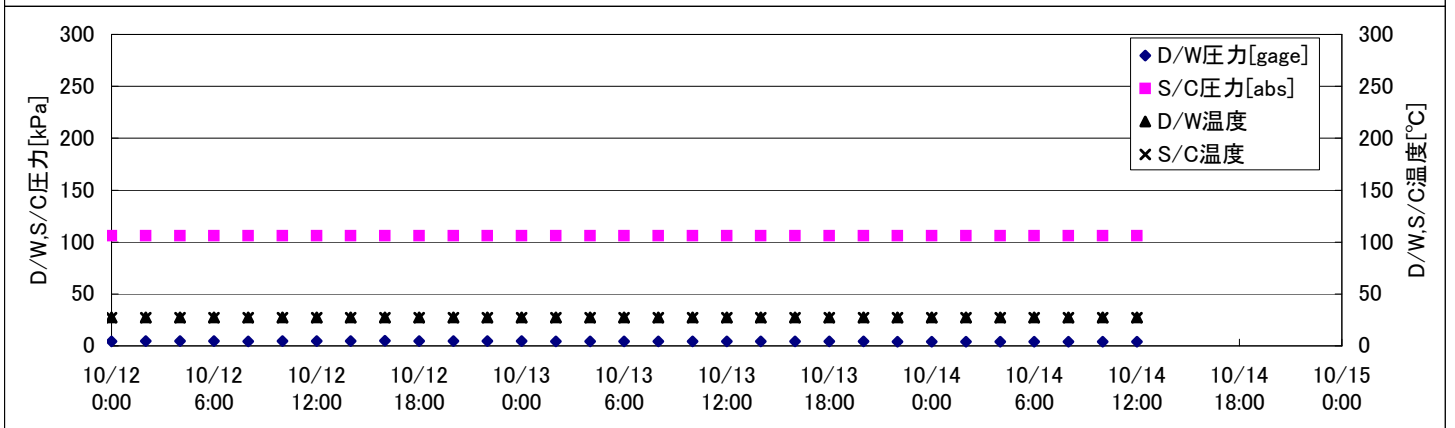
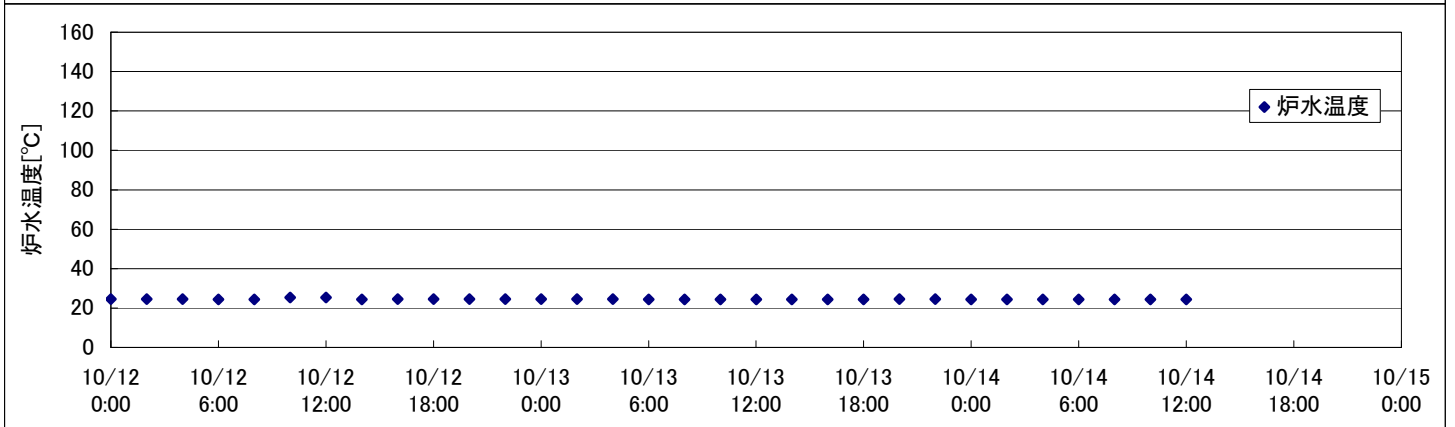
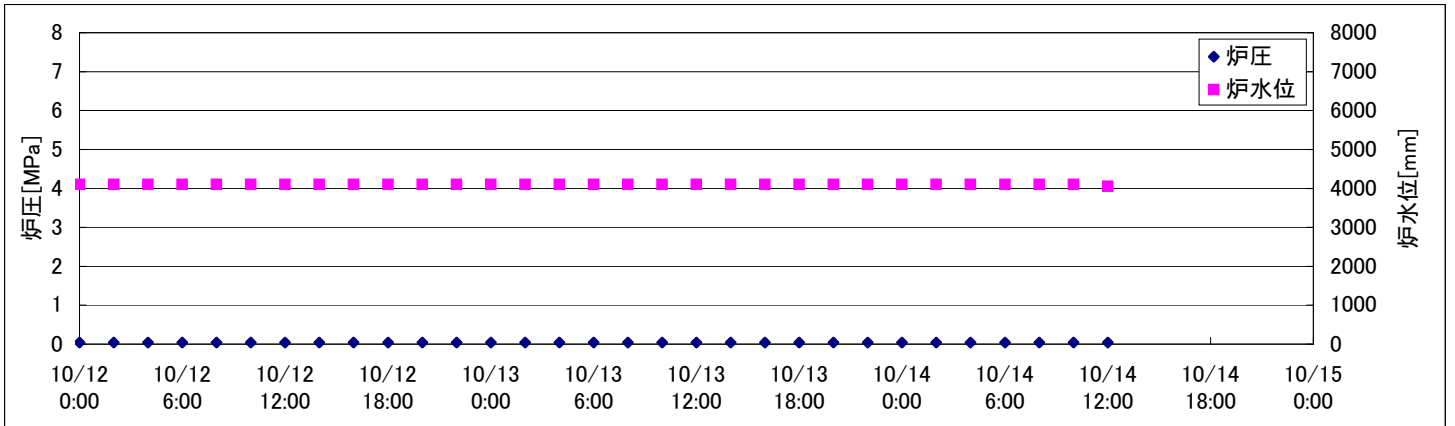
2F-4号機

※燃料頂部(TAF)からの水位 = 炉水位 + 4200[mm]

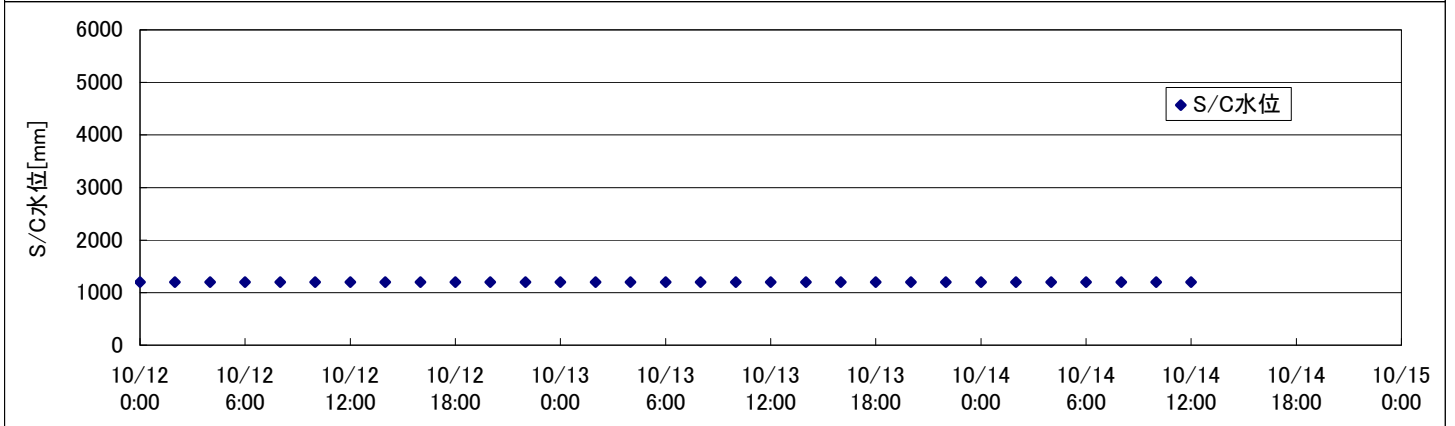
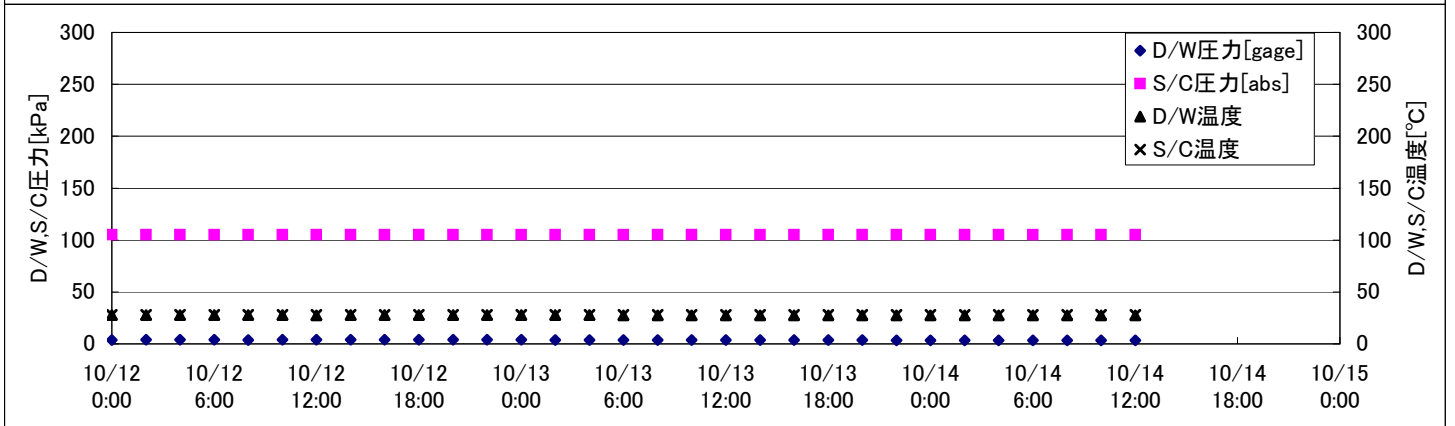
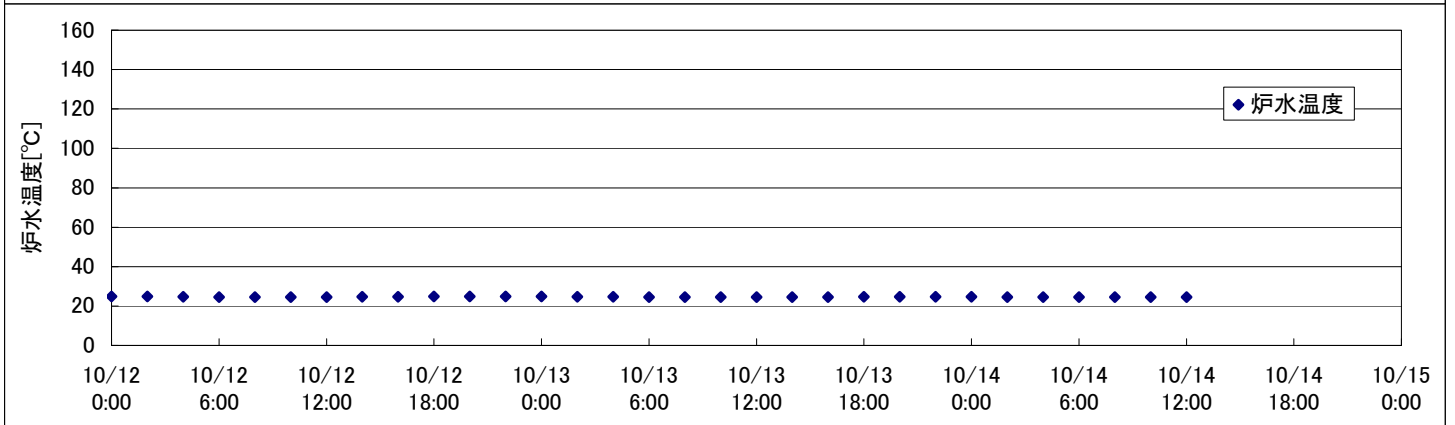
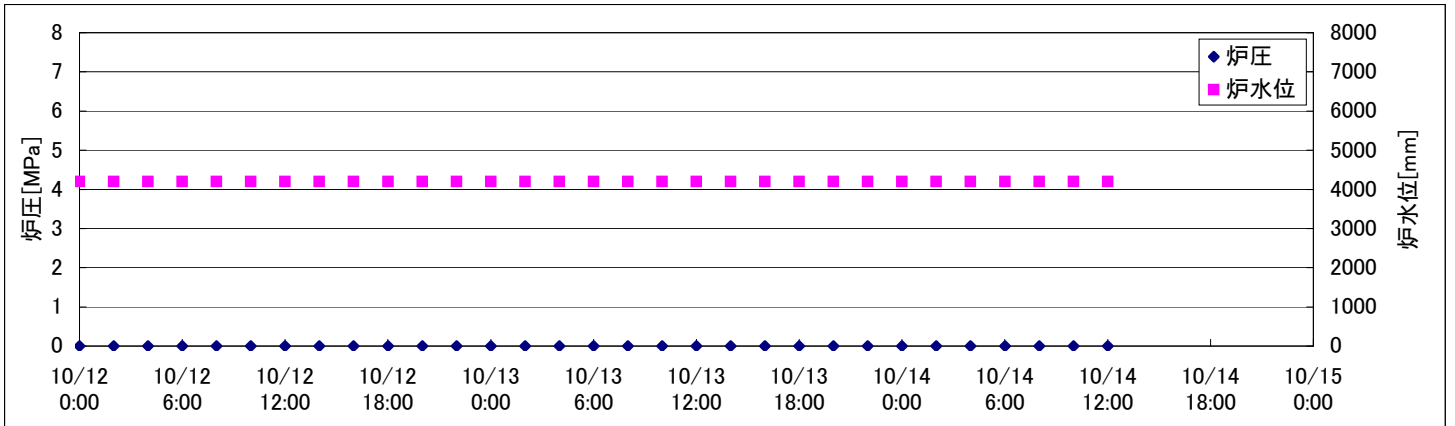
時間	炉圧 [MPa (gage)]	炉水位 [mm] 停止時	炉水温度[°C]	D/W圧力 [kPa(gage)]	D/W温度 [°C]	S/C圧力 [kPa(abs)]	S/C水位 [mm]	S/C温度 [°C]
2011/10/12 0:00	0.04	4150	26.9		30.7	101	2200	23
2011/10/12 2:00	0.04	4150	26.9		30.7	101	2200	23
2011/10/12 4:00	0.04	4150	26.8		30.7	101	2200	23
2011/10/12 6:00	0.04	4150	26.8		30.7	101	2200	23
2011/10/12 8:00	0.04	4150	26.8		30.7	101	2200	23
2011/10/12 10:00	0.04	4150	26.7		30.7	101	2200	23
2011/10/12 12:00	0.04	4150	26.6		30.7	101	2200	23
2011/10/12 14:00	0.04	4150	26.6		30.7	100	2200	23
2011/10/12 16:00	0.04	4150	26.7		30.7	100	2200	23
2011/10/12 18:00	0.04	4150	26.8		30.7	101	2200	23
2011/10/12 20:00	0.04	4200	26.8		30.7	101	2200	23
2011/10/12 22:00	0.04	4200	26.8		30.7	101	2200	23
2011/10/13 0:00	0.04	4200	26.8		30.7	101	2200	23
2011/10/13 2:00	0.04	4200	26.8		30.7	101	2200	23
2011/10/13 4:00	0.04	4200	26.8		30.7	101	2200	23
2011/10/13 6:00	0.04	4000	26.7		30.7	101	2200	23
2011/10/13 8:00	0.04	4000	26.7		30.7	101	2200	23
2011/10/13 10:00	0.04	4000	26.6		30.7	101	2200	23
2011/10/13 12:00	0.04	4000	26.6		30.7	101	2200	23
2011/10/13 14:00	0.04	4000	26.6		30.7	101	2200	23
2011/10/13 16:00	0.04	4000	26.6		30.8	101	2200	23
2011/10/13 18:00	0.04	4000	26.7		30.7	101	2200	23
2011/10/13 20:00	0.04	4000	26.7		30.7	101	2200	23
2011/10/13 22:00	0.04	4050	26.7		30.7	101	2200	23
2011/10/14 0:00	0.04	4050	26.7		30.7	101	2200	23
2011/10/14 2:00	0.04	4050	26.7		30.7	101	2200	23
2011/10/14 4:00	0.04	4050	26.6		30.7	101	2200	23
2011/10/14 6:00	0.04	4050	26.6		30.6	101	2200	23
2011/10/14 8:00	0.04	4050	26.6		30.6	101	2200	23
2011/10/14 10:00	0.04	4050	26.5		30.7	101	2200	23
2011/10/14 12:00	0.04	4050	26.5		30.7	101	2200	23
2011/10/14 14:00								
2011/10/14 16:00								
2011/10/14 18:00								
2011/10/14 20:00								
2011/10/14 22:00								
2011/10/15 0:00								

D/W圧力について
 ・パーソナルエアロックドア開放中であるため、9/6 10:00 より記載せず

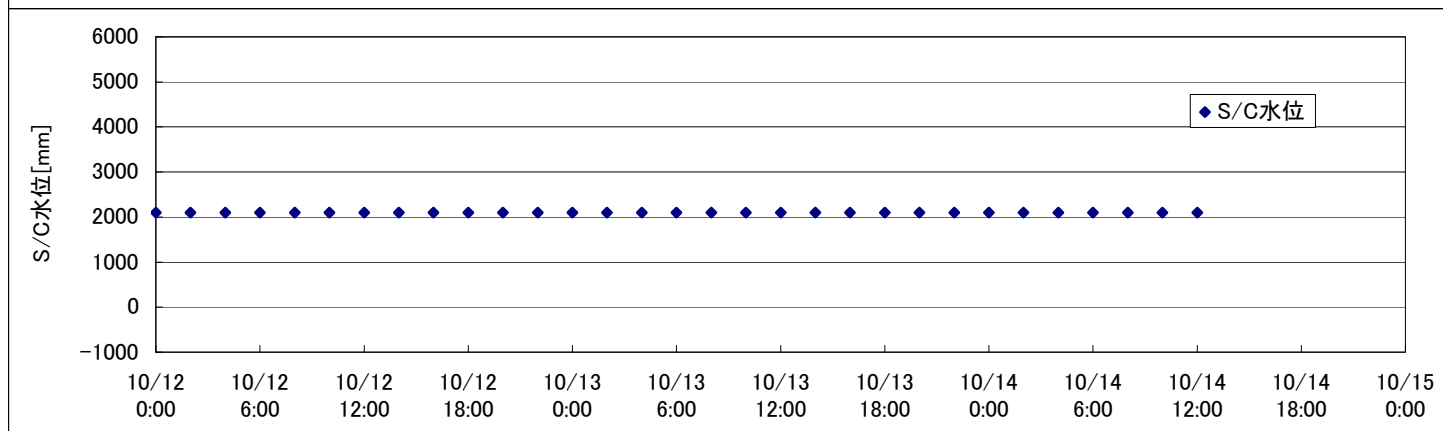
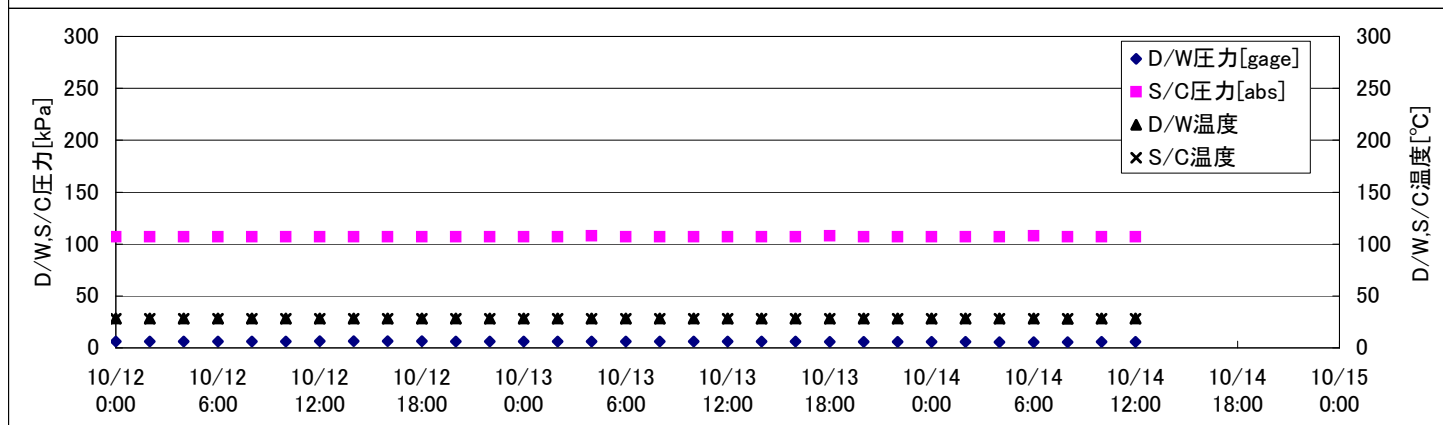
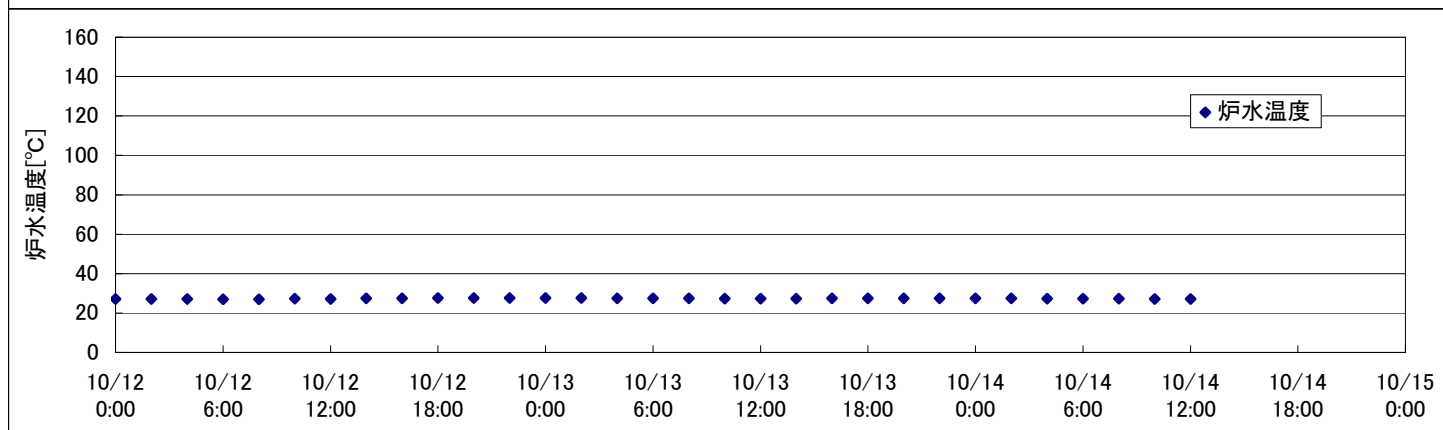
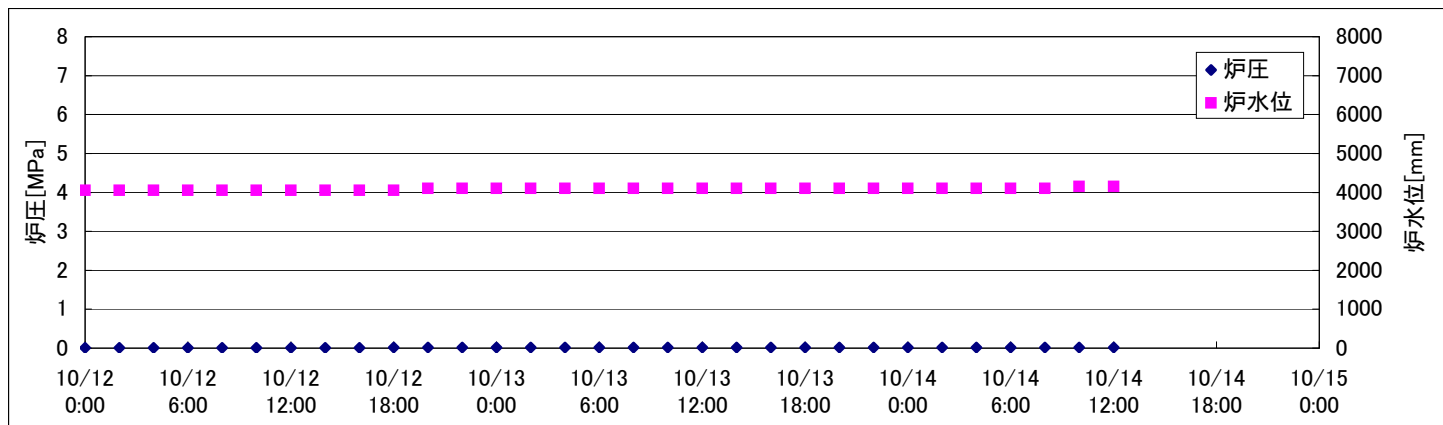
2F-1号機



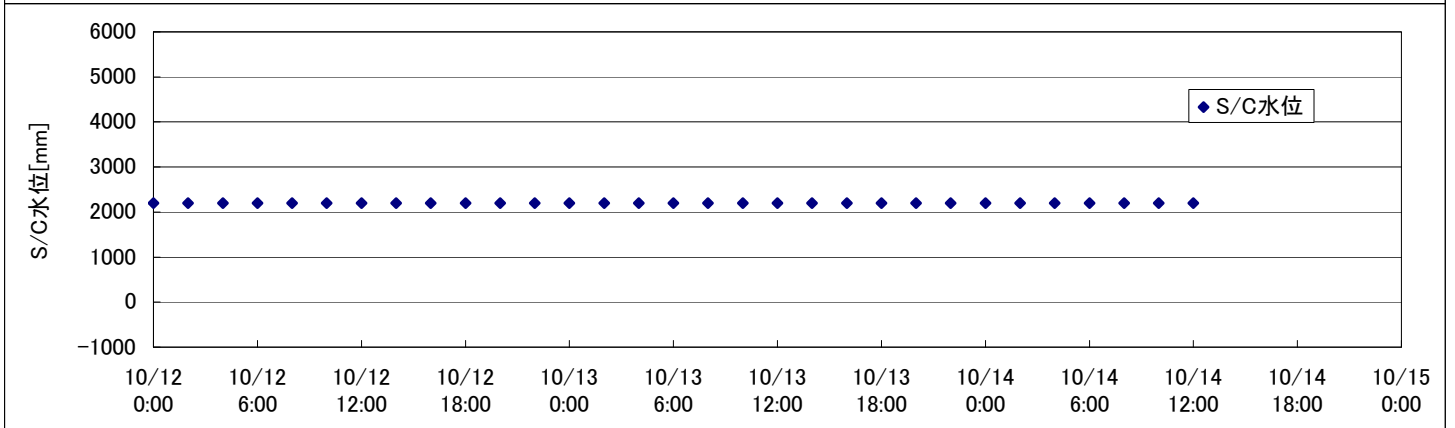
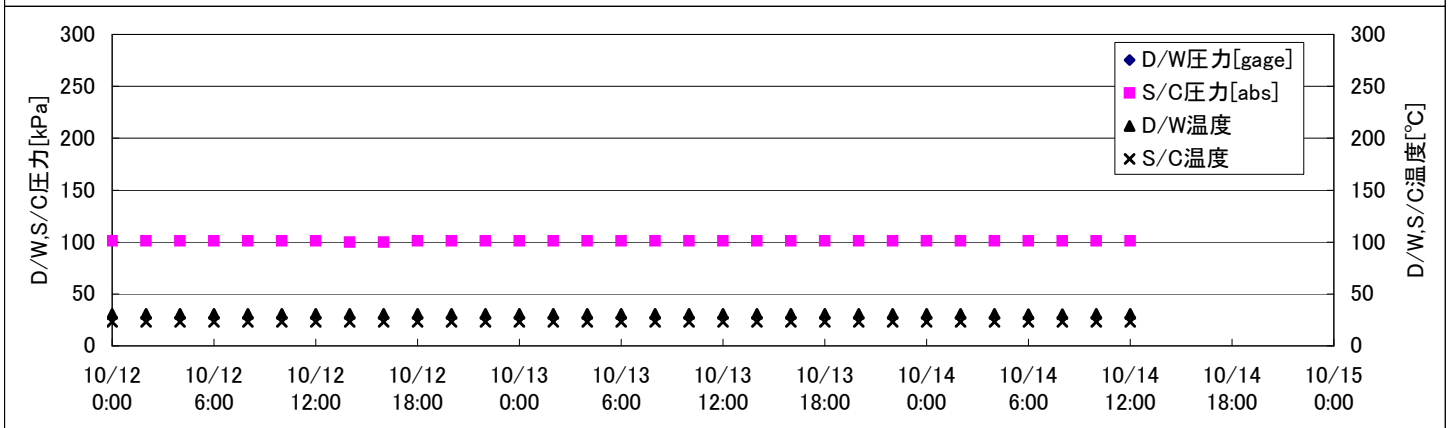
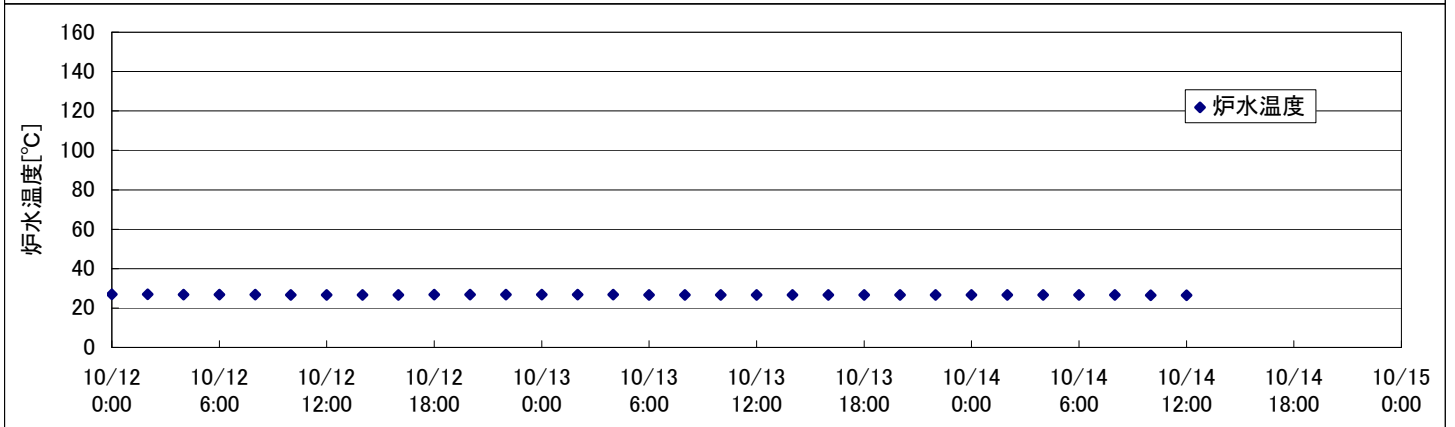
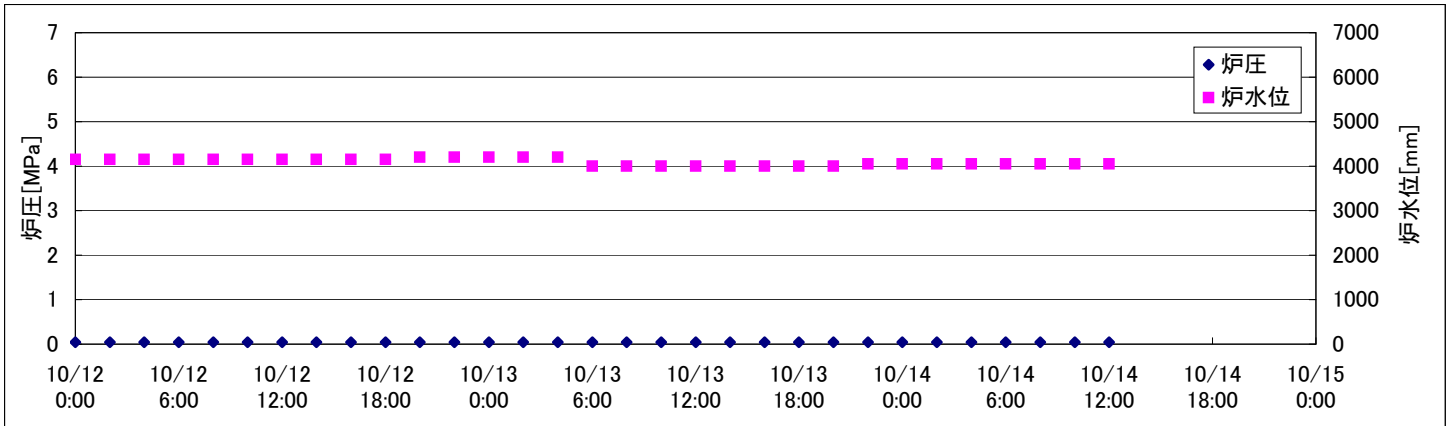
2F-2号機



2F-3号機



2F-4号機



2F-4号機

※燃料頂部(TAF)からの水位 = 炉水位 + 4200[mm]

時間	炉圧 [MPa (gage)]	炉水位 [mm] 停止時	炉水温度[°C]	D/W圧力 [kPa(gage)]	D/W温度 [°C]	S/C圧力 [kPa(abs)]	S/C水位 [mm]	S/C温度 [°C]
2011/10/12 0:00	0.04	4150	26.9		30.7	101	2200	23
2011/10/12 2:00	0.04	4150	26.9		30.7	101	2200	23
2011/10/12 4:00	0.04	4150	26.8		30.7	101	2200	23
2011/10/12 6:00	0.04	4150	26.8		30.7	101	2200	23
2011/10/12 8:00	0.04	4150	26.8		30.7	101	2200	23
2011/10/12 10:00	0.04	4150	26.7		30.7	101	2200	23
2011/10/12 12:00	0.04	4150	26.6		30.7	101	2200	23
2011/10/12 14:00	0.04	4150	26.6		30.7	100	2200	23
2011/10/12 16:00	0.04	4150	26.7		30.7	100	2200	23
2011/10/12 18:00	0.04	4150	26.8		30.7	101	2200	23
2011/10/12 20:00	0.04	4200	26.8		30.7	101	2200	23
2011/10/12 22:00	0.04	4200	26.8		30.7	101	2200	23
2011/10/13 0:00	0.04	4200	26.8		30.7	101	2200	23
2011/10/13 2:00	0.04	4200	26.8		30.7	101	2200	23
2011/10/13 4:00	0.04	4200	26.8		30.7	101	2200	23
2011/10/13 6:00	0.04	4000	26.7		30.7	101	2200	23
2011/10/13 8:00	0.04	4000	26.7		30.7	101	2200	23
2011/10/13 10:00	0.04	4000	26.6		30.7	101	2200	23
2011/10/13 12:00	0.04	4000	26.6		30.7	101	2200	23
2011/10/13 14:00	0.04	4000	26.6		30.7	101	2200	23
2011/10/13 16:00	0.04	4000	26.6		30.8	101	2200	23
2011/10/13 18:00	0.04	4000	26.7		30.7	101	2200	23
2011/10/13 20:00	0.04	4000	26.7		30.7	101	2200	23
2011/10/13 22:00	0.04	4050	26.7		30.7	101	2200	23
2011/10/14 0:00	0.04	4050	26.7		30.7	101	2200	23
2011/10/14 2:00	0.04	4050	26.7		30.7	101	2200	23
2011/10/14 4:00	0.04	4050	26.6		30.7	101	2200	23
2011/10/14 6:00	0.04	4050	26.6		30.6	101	2200	23
2011/10/14 8:00	0.04	4050	26.6		30.6	101	2200	23
2011/10/14 10:00	0.04	4050	26.5		30.7	101	2200	23
2011/10/14 12:00	0.04	4050	26.5		30.7	101	2200	23
2011/10/14 14:00								
2011/10/14 16:00								
2011/10/14 18:00								
2011/10/14 20:00								
2011/10/14 22:00								
2011/10/15 0:00								

D/W圧力について

・パーソナルエアロックドア開放中であるため、9/6 10:00 より記載せず