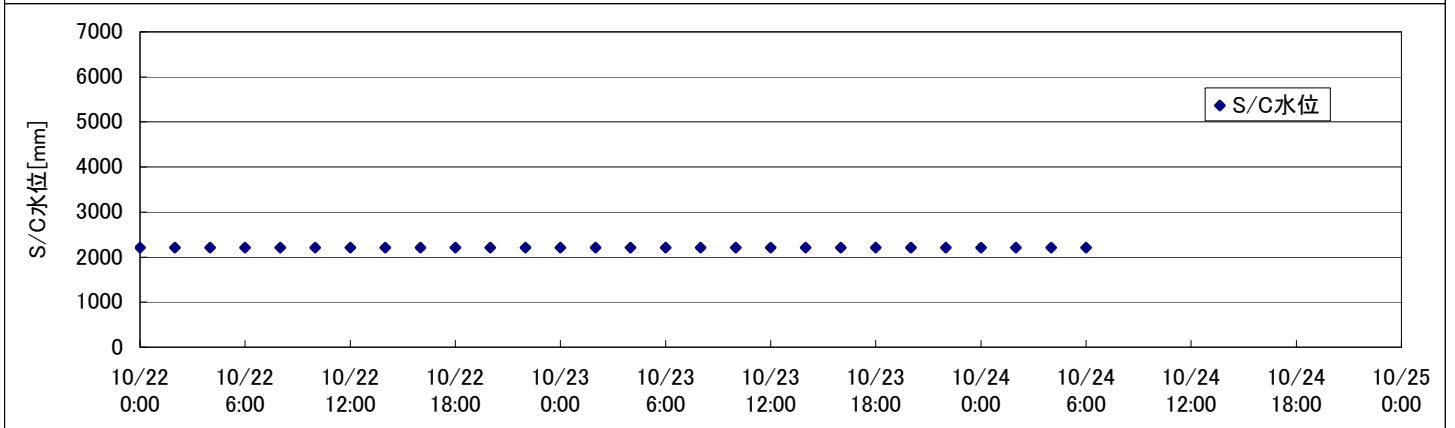
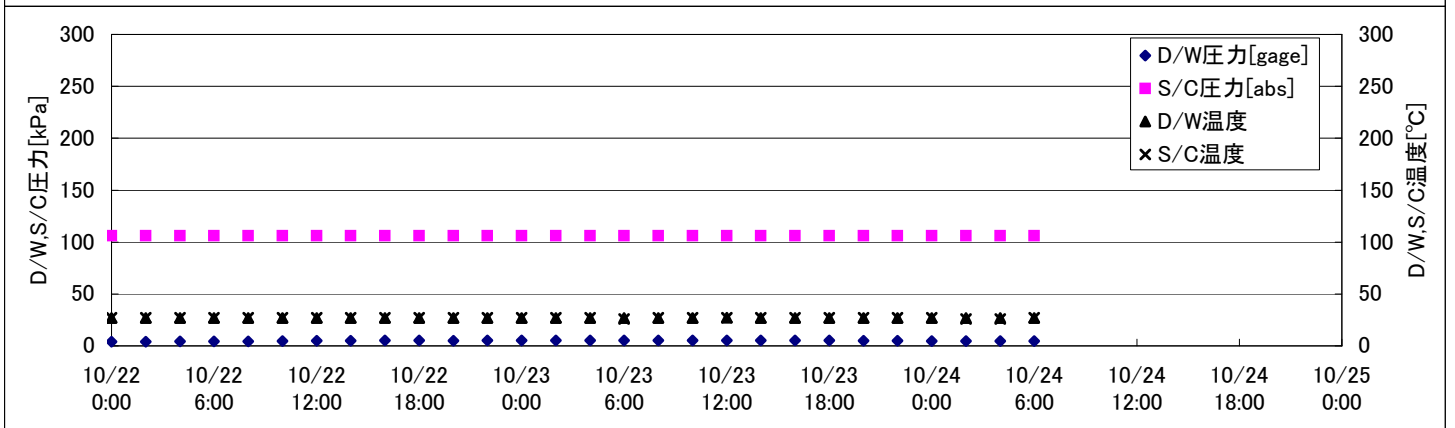
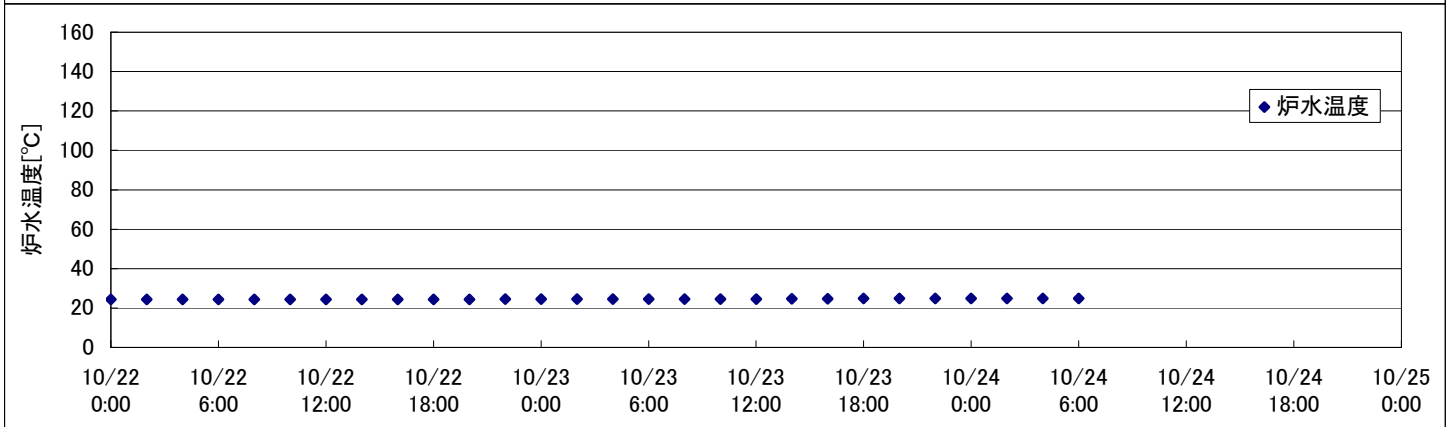
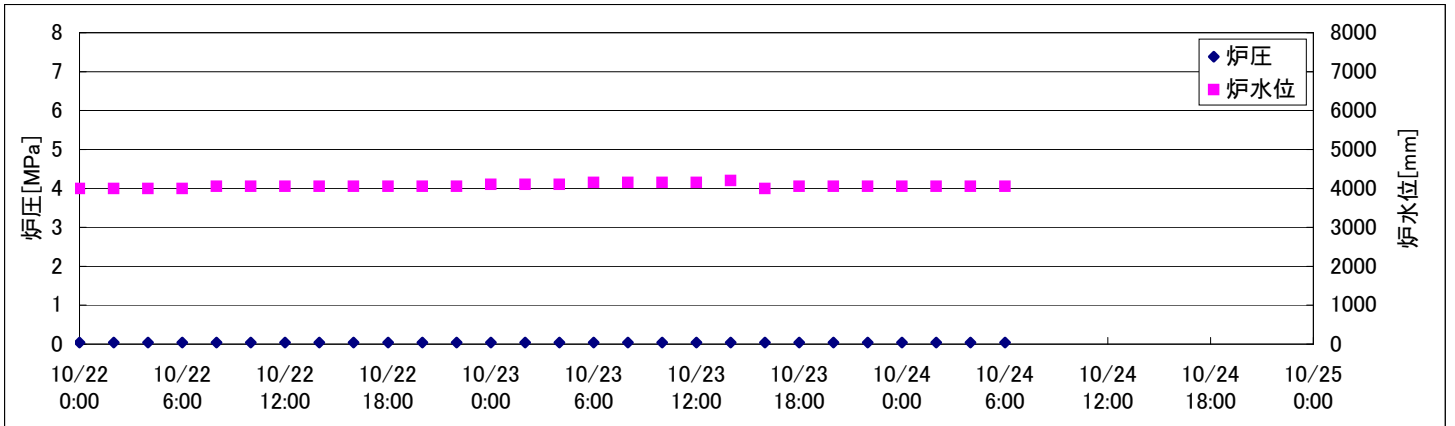
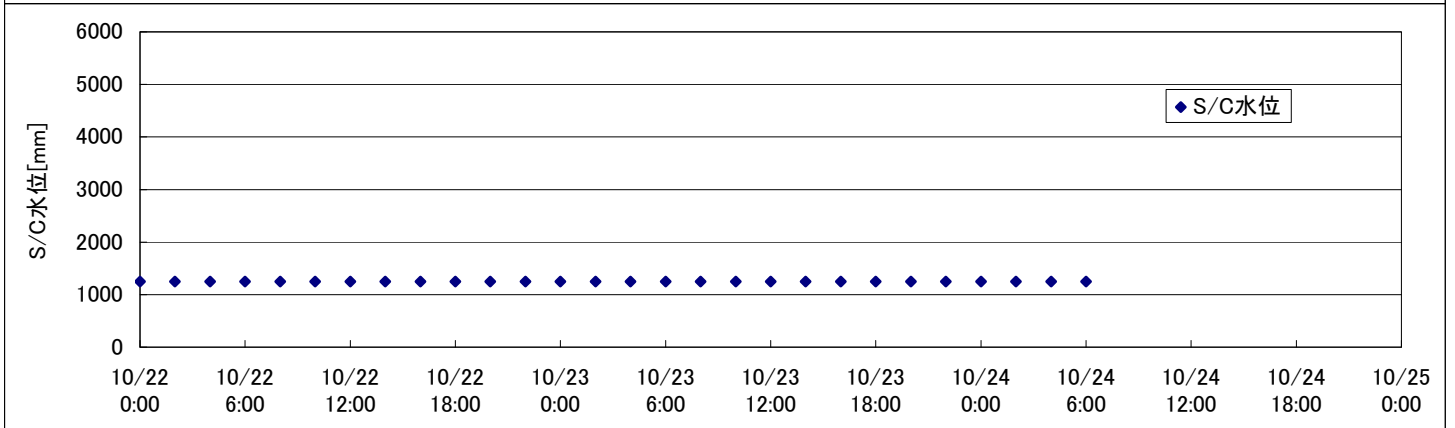
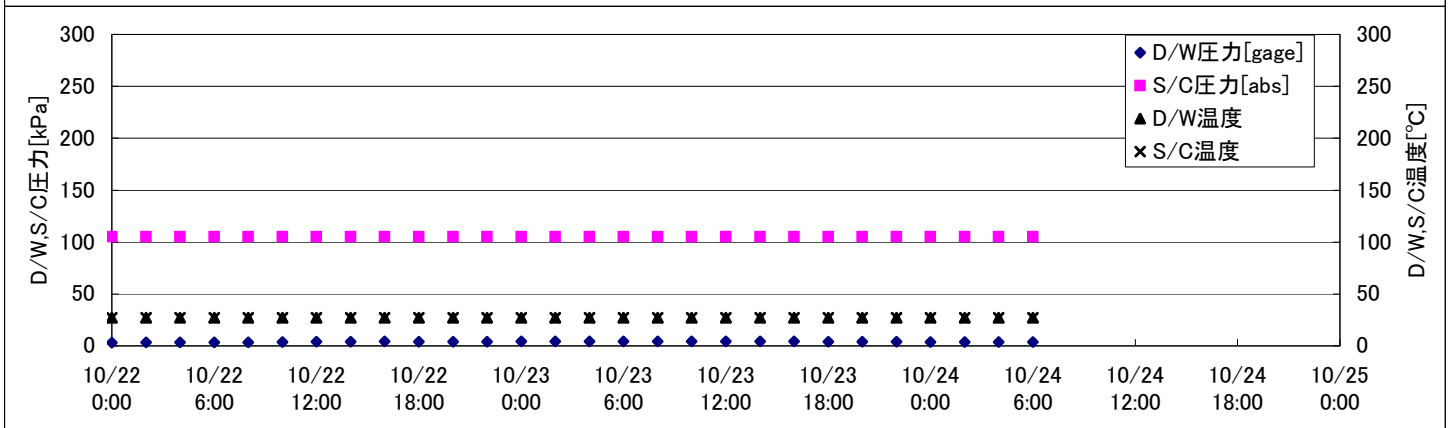
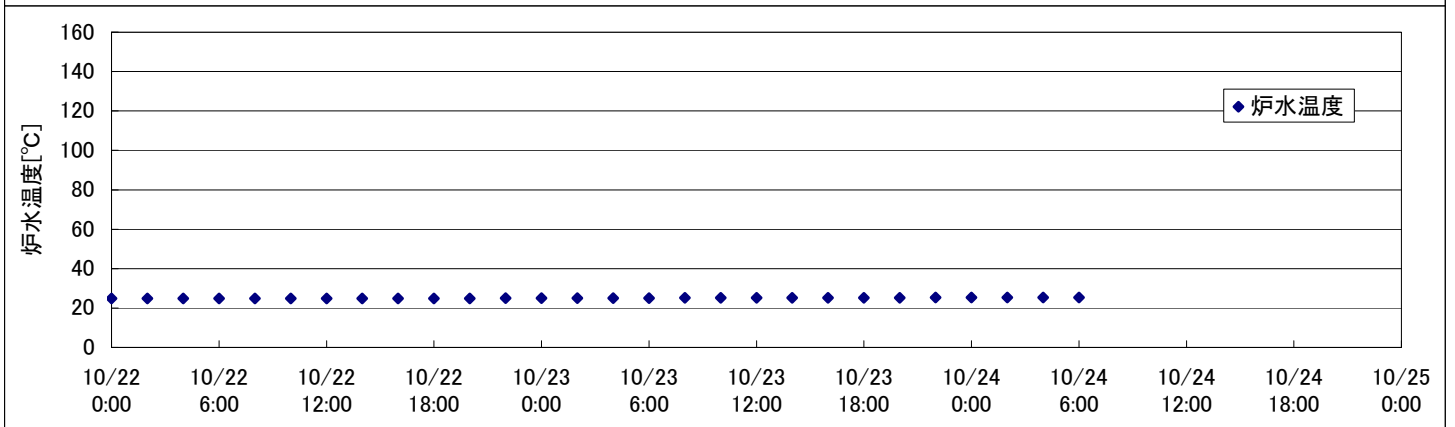
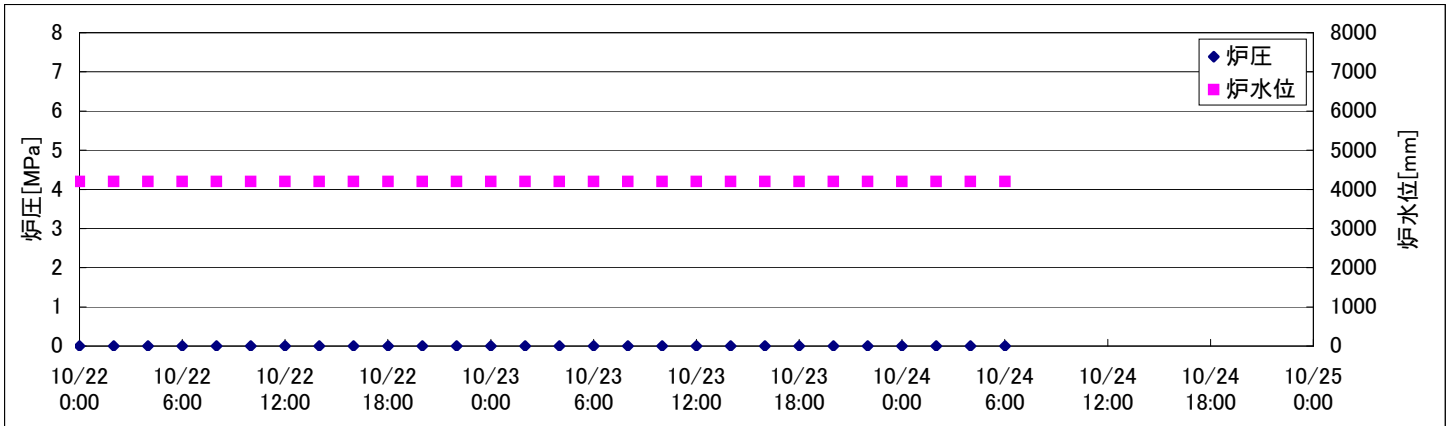


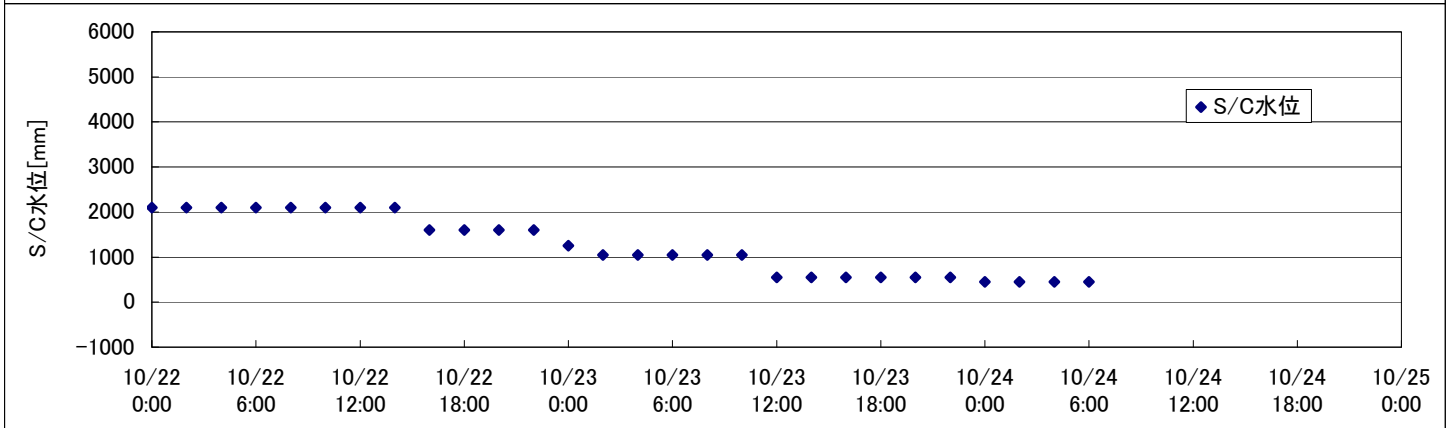
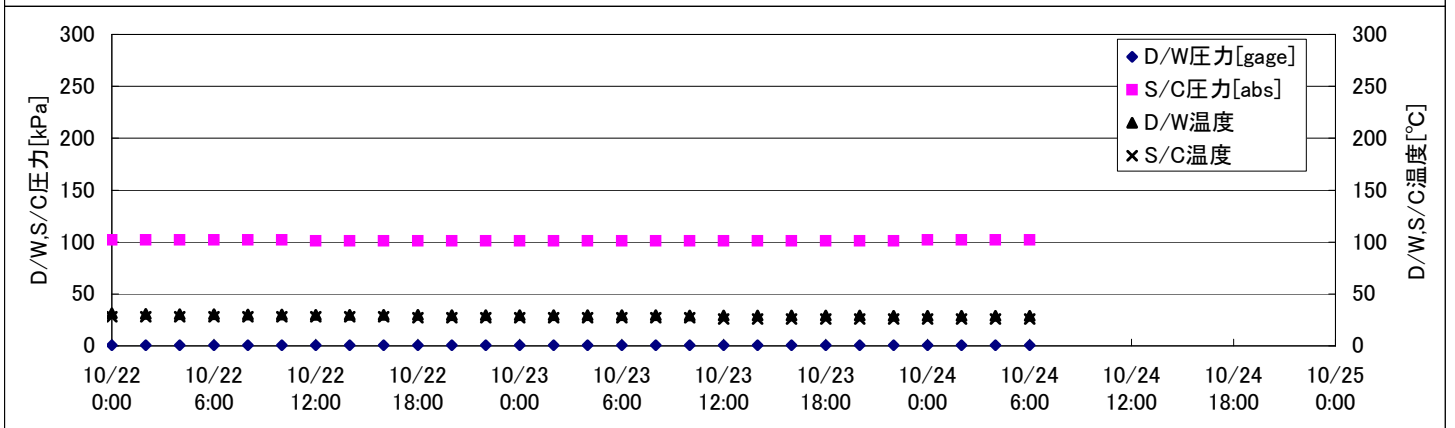
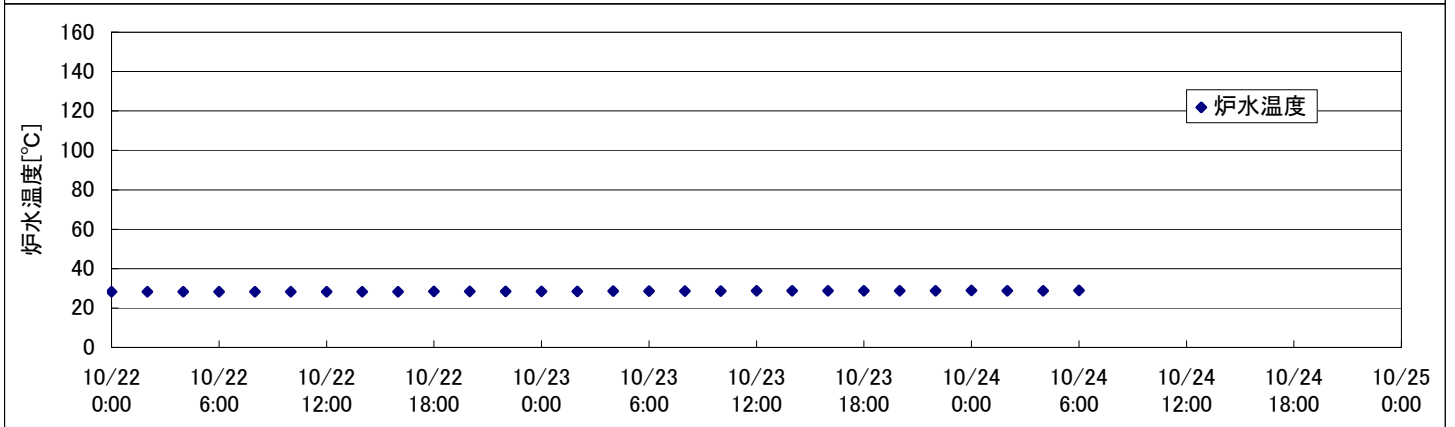
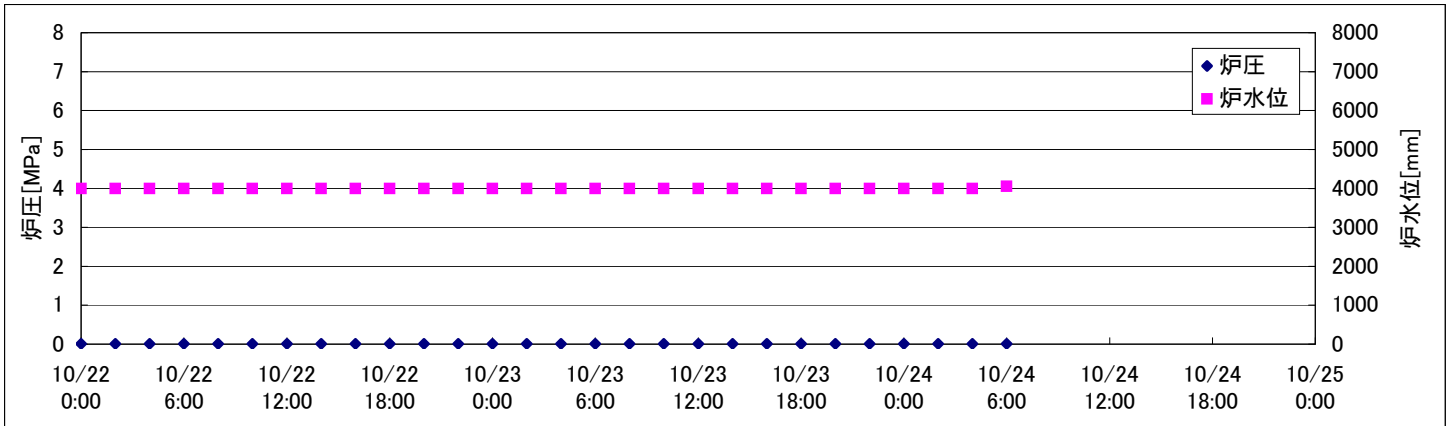
2F-1号機



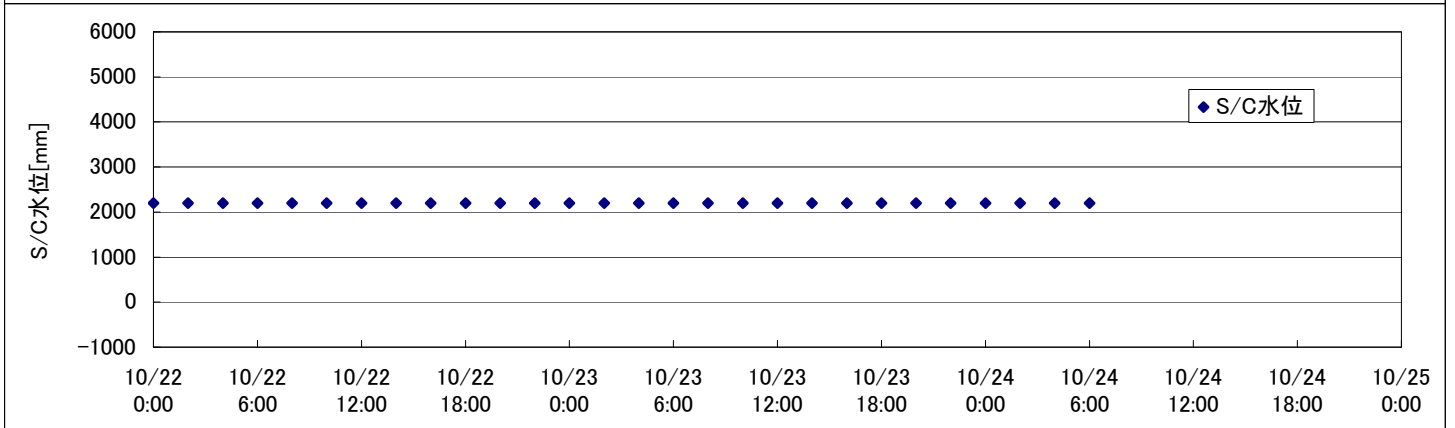
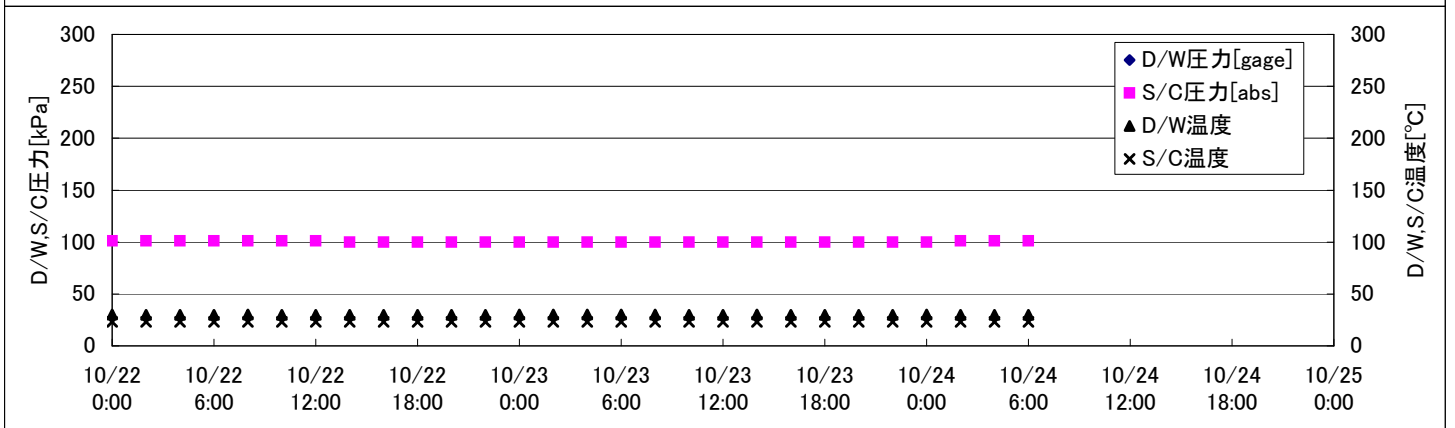
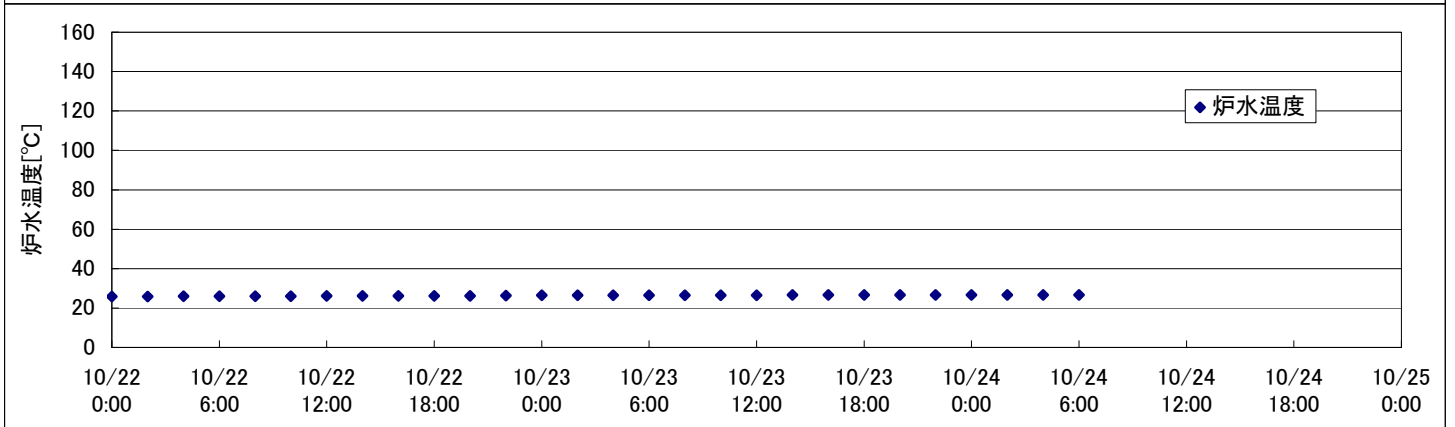
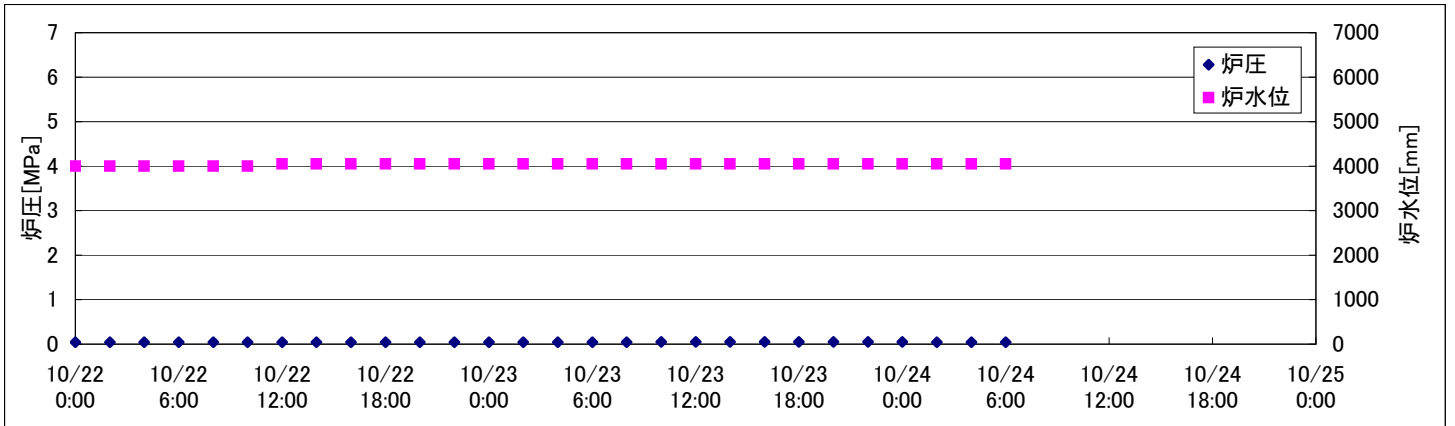
2F-2号機



2F-3号機



2F-4号機



2F-3号機

※燃料頂部(TAF)からの水位 = 炉水位 + 4200[mm]

時間	炉圧 [MPa (gage)]	炉水位 [mm] 停止時	炉水温度[°C]	D/W圧力 [kPa(gage)]	D/W温度 [°C]	S/C圧力 [kPa(abs)]	S/C水位 [mm]	S/C温度 [°C]
2011/10/22 0:00	0.01	4000	28.2	1	31.3	102	2100	28
2011/10/22 2:00	0.01	4000	28.2	1	30.8	102	2100	28
2011/10/22 4:00	0.01	4000	28.2	1	30.5	102	2100	28
2011/10/22 6:00	0.01	4000	28.3	1	30.4	102	2100	28
2011/10/22 8:00	0.01	4000	28.2	1	30.2	102	2100	28
2011/10/22 10:00	0.01	4000	28.2	1	30.2	102	2100	28
2011/10/22 12:00	0.01	4000	28.3	1	30.0	101	2100	28
2011/10/22 14:00	0.01	4000	28.3	1	30.0	101	2100	28
2011/10/22 16:00	0.01	4000	28.3	1	29.8	101	1600	28
2011/10/22 18:00	0.01	4000	28.4	1	29.8	101	1600	27
2011/10/22 20:00	0.01	4000	28.4	1	29.6	101	1600	27
2011/10/22 22:00	0.01	4000	28.5	1	29.6	101	1600	27
2011/10/23 0:00	0.01	4000	28.5	1	29.6	101	1250	27
2011/10/23 2:00	0.01	4000	28.5	1	29.6	101	1050	27
2011/10/23 4:00	0.01	4000	28.6	1	29.5	101	1050	27
2011/10/23 6:00	0.01	4000	28.6	1	29.5	101	1050	27
2011/10/23 8:00	0.01	4000	28.6	1	29.5	101	1050	27
2011/10/23 10:00	0.01	4000	28.6	1	29.3	101	1050	27
2011/10/23 12:00	0.01	4000	28.7	1	29.3	101	550	26
2011/10/23 14:00	0.01	4000	28.7	1	29.3	101	550	26
2011/10/23 16:00	0.01	4000	28.7	1	29.2	101	550	26
2011/10/23 18:00	0.01	4000	28.7	1	29.2	101	550	26
2011/10/23 20:00	0.01	4000	28.8	1	29.2	101	550	26
2011/10/23 22:00	0.01	4000	28.8	1	29.0	101	550	26
2011/10/24 0:00	0.01	4000	28.9	1	29.1	102	450	26
2011/10/24 2:00	0.01	4000	28.8	1	29.0	102	450	26
2011/10/24 4:00	0.01	4000	28.8	1	29.0	102	450	26
2011/10/24 6:00	0.01	4050	28.9	1	29.0	102	450	26
2011/10/24 8:00								
2011/10/24 10:00								
2011/10/24 12:00								
2011/10/24 14:00								
2011/10/24 16:00								
2011/10/24 18:00								
2011/10/24 20:00								
2011/10/24 22:00								
2011/10/25 0:00								

S/C水位について
 ・10/23 22:23～22:42
 S/Cブロー実施のため、S/C水位低下。

S/Cブロー実施時刻の訂正
 (正)10/23 9:56～11:39 (誤)10/23 10:05～11:34(2011年10月23日12時
 現在のものを訂正)

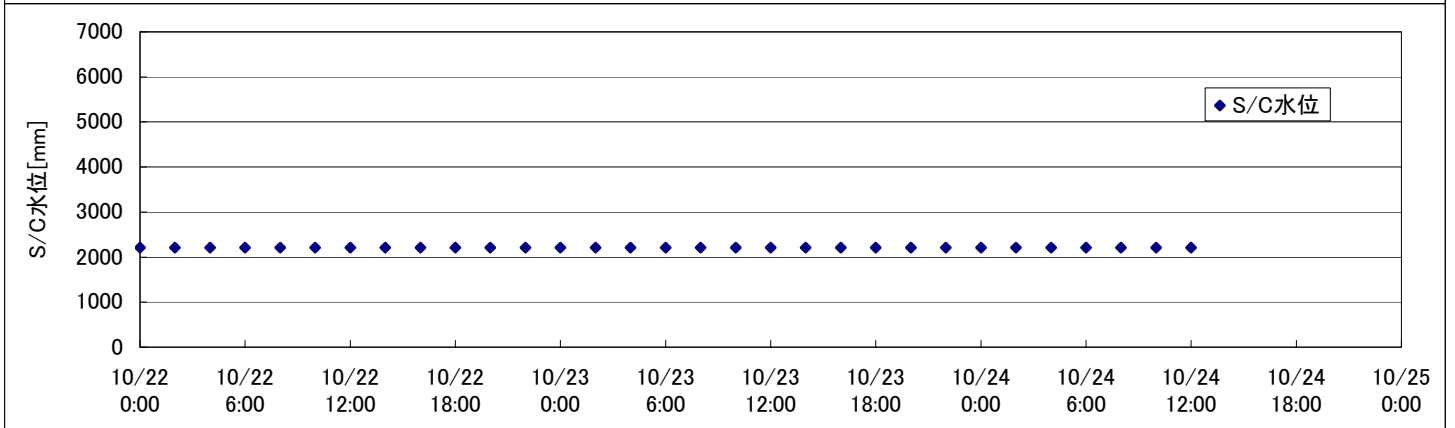
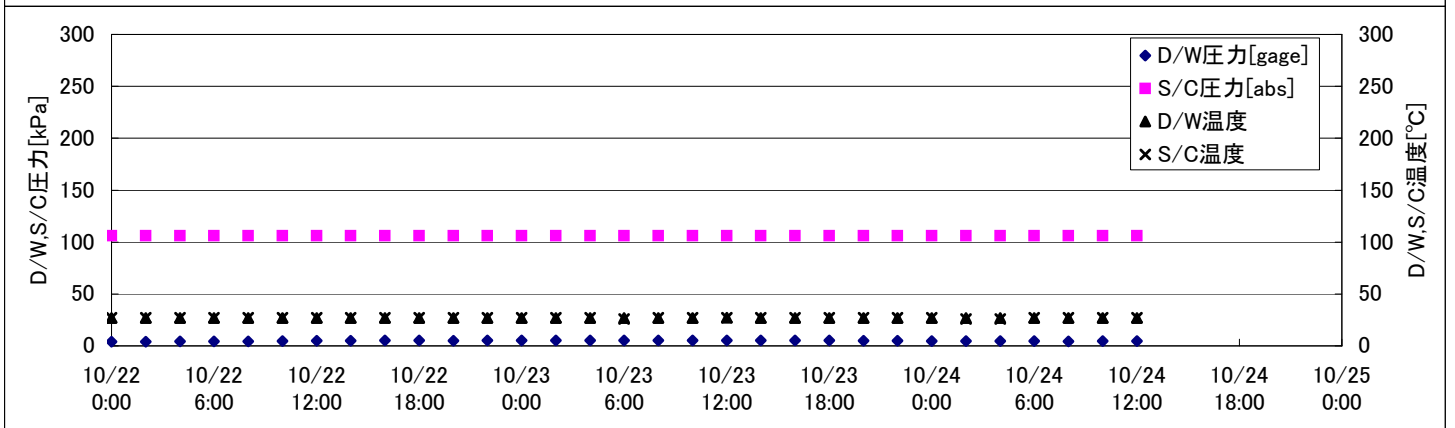
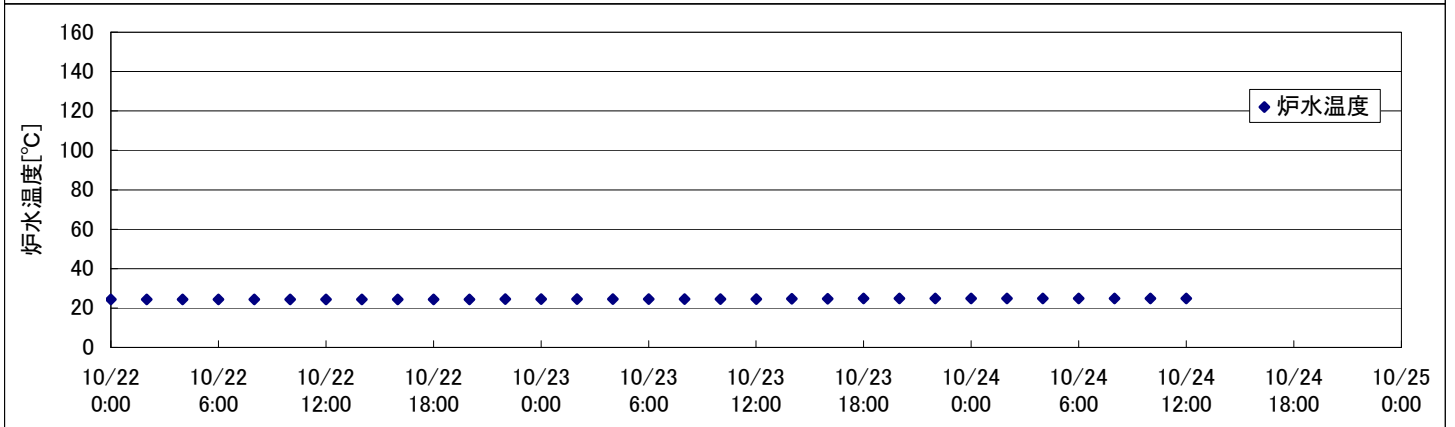
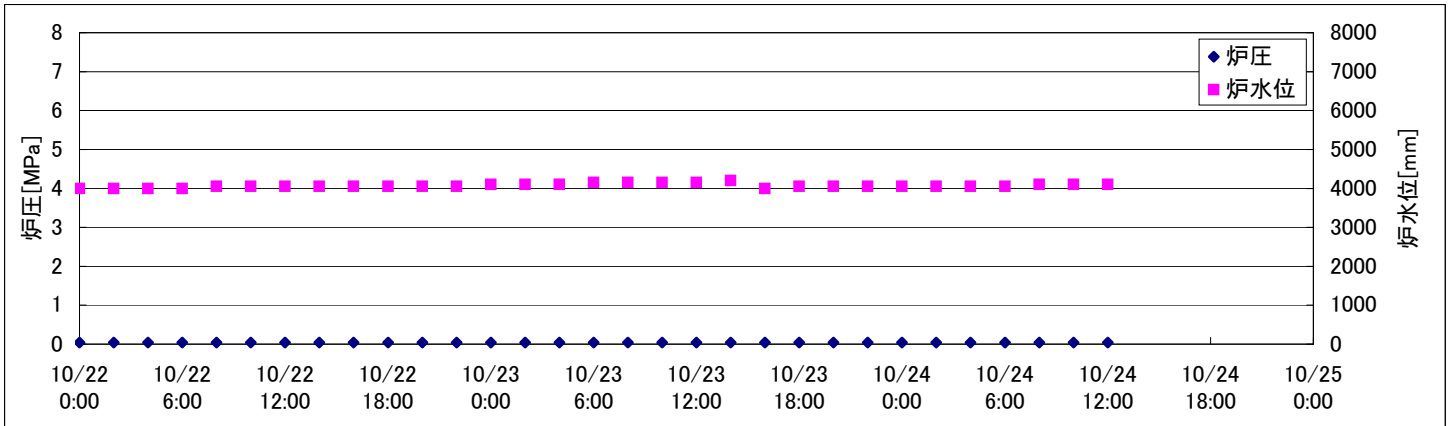
2F-4号機

※燃料頂部(TAF)からの水位 = 炉水位 + 4200[mm]

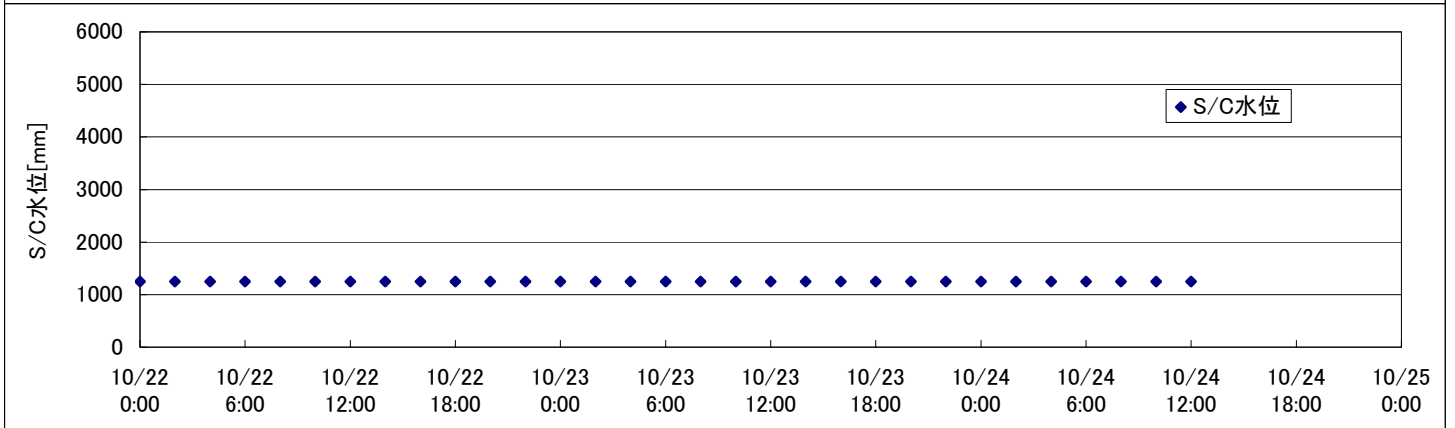
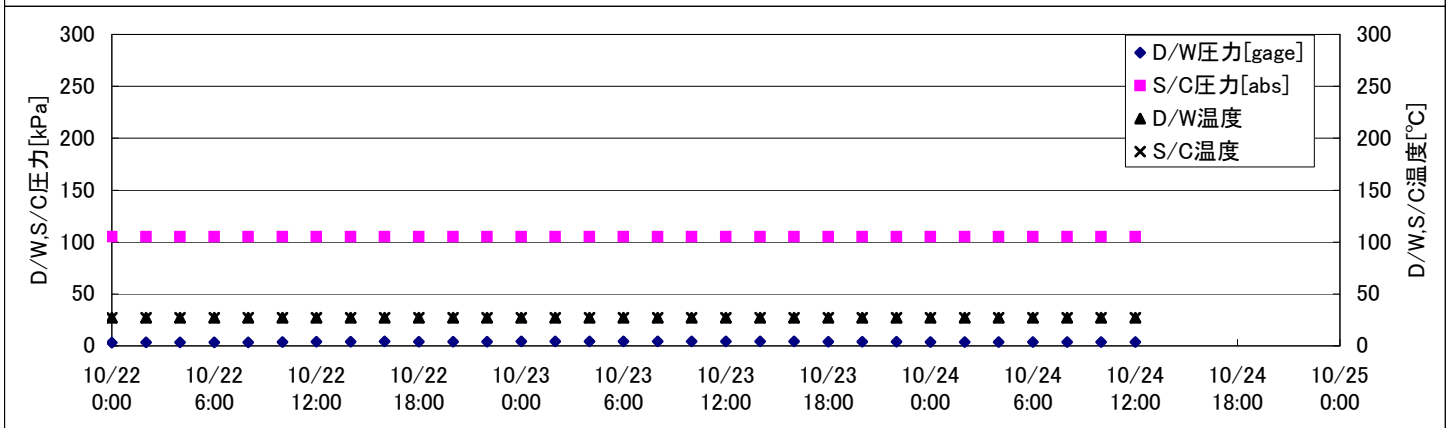
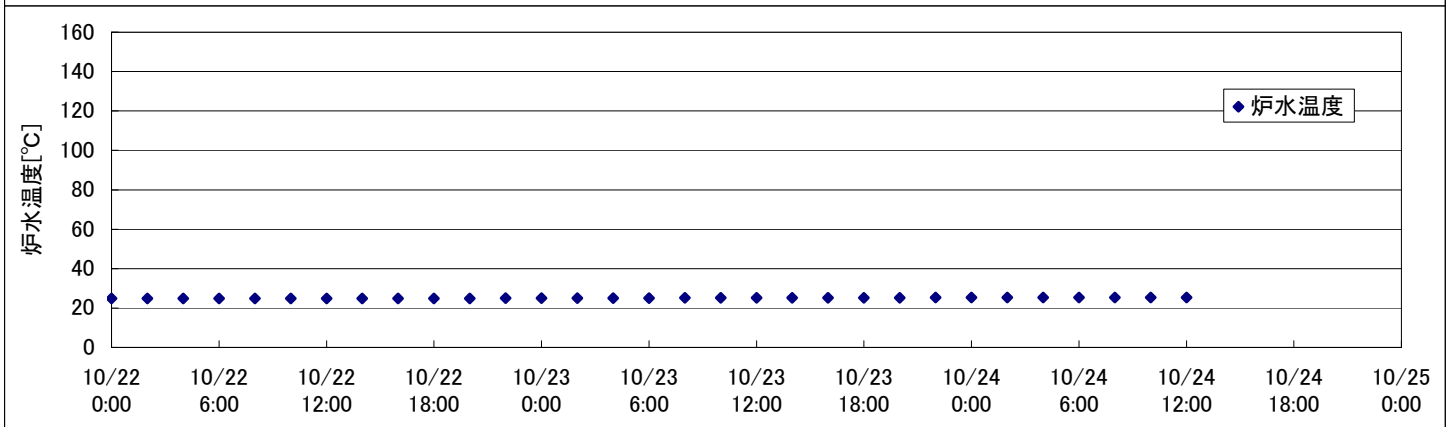
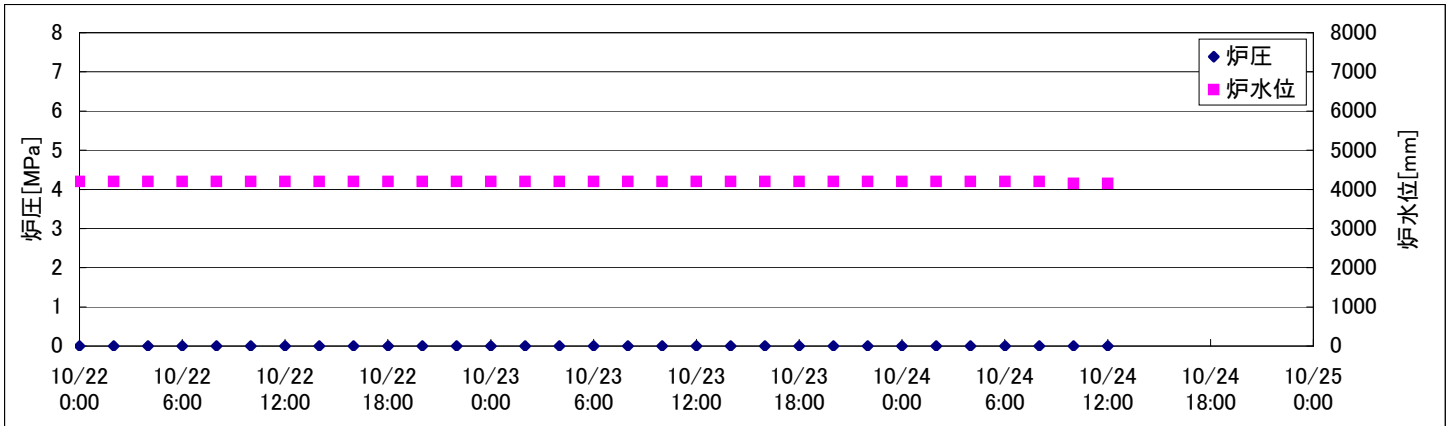
時間	炉圧 [MPa (gage)]	炉水位 [mm] 停止時	炉水温度[°C]	D/W圧力 [kPa(gage)]	D/W温度 [°C]	S/C圧力 [kPa(abs)]	S/C水位 [mm]	S/C温度 [°C]
2011/10/22 0:00	0.04	4000	25.9		30.1	101	2200	23
2011/10/22 2:00	0.04	4000	25.9		30.0	101	2200	23
2011/10/22 4:00	0.04	4000	26.0		30.0	101	2200	23
2011/10/22 6:00	0.04	4000	26.0		30.0	101	2200	23
2011/10/22 8:00	0.04	4000	26.0		30.1	101	2200	23
2011/10/22 10:00	0.04	4000	26.0		30.0	101	2200	23
2011/10/22 12:00	0.04	4050	26.1		30.0	101	2200	23
2011/10/22 14:00	0.04	4050	26.1		30.0	100	2200	23
2011/10/22 16:00	0.04	4050	26.1		30.0	100	2200	23
2011/10/22 18:00	0.04	4050	26.2		30.0	100	2200	23
2011/10/22 20:00	0.04	4050	26.2		30.0	100	2200	23
2011/10/22 22:00	0.04	4050	26.3		30.0	100	2200	23
2011/10/23 0:00	0.04	4050	26.4		30.1	100	2200	23
2011/10/23 2:00	0.04	4050	26.4		30.1	100	2200	23
2011/10/23 4:00	0.04	4050	26.4		30.1	100	2200	23
2011/10/23 6:00	0.04	4050	26.5		30.1	100	2200	23
2011/10/23 8:00	0.04	4050	26.5		30.1	100	2200	23
2011/10/23 10:00	0.05	4050	26.5		30.0	100	2200	23
2011/10/23 12:00	0.05	4050	26.5		30.0	100	2200	23
2011/10/23 14:00	0.05	4050	26.6		30.1	100	2200	23
2011/10/23 16:00	0.05	4050	26.6		30.0	100	2200	23
2011/10/23 18:00	0.05	4050	26.6		30.0	100	2200	23
2011/10/23 20:00	0.05	4050	26.6		30.0	100	2200	23
2011/10/23 22:00	0.05	4050	26.6		30.0	100	2200	23
2011/10/24 0:00	0.05	4050	26.6		30.1	100	2200	23
2011/10/24 2:00	0.04	4050	26.6		30.0	101	2200	23
2011/10/24 4:00	0.04	4050	26.6		30.0	101	2200	23
2011/10/24 6:00	0.04	4050	26.6		30.0	101	2200	23
2011/10/24 8:00								
2011/10/24 10:00								
2011/10/24 12:00								
2011/10/24 14:00								
2011/10/24 16:00								
2011/10/24 18:00								
2011/10/24 20:00								
2011/10/24 22:00								
2011/10/25 0:00								

D/W圧力について
 ・パーソナルエアロックドア開放中であるため、9/6 10:00 より記載せず

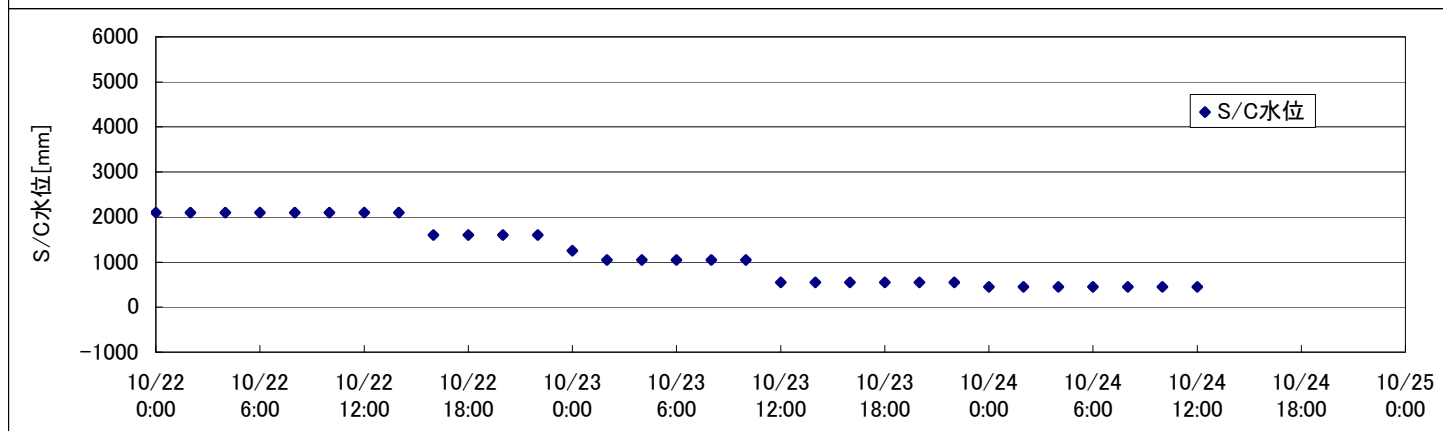
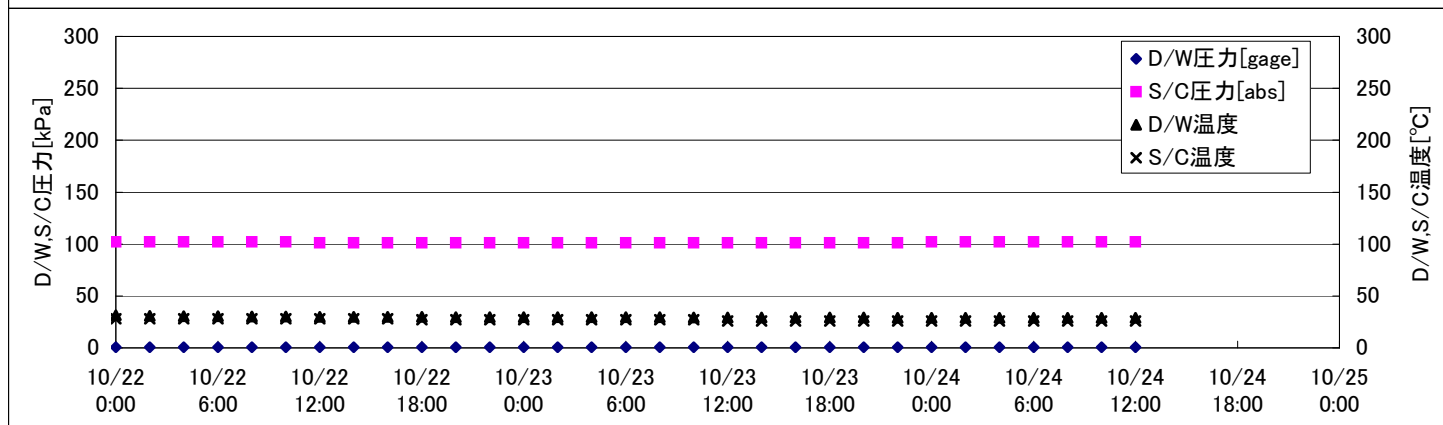
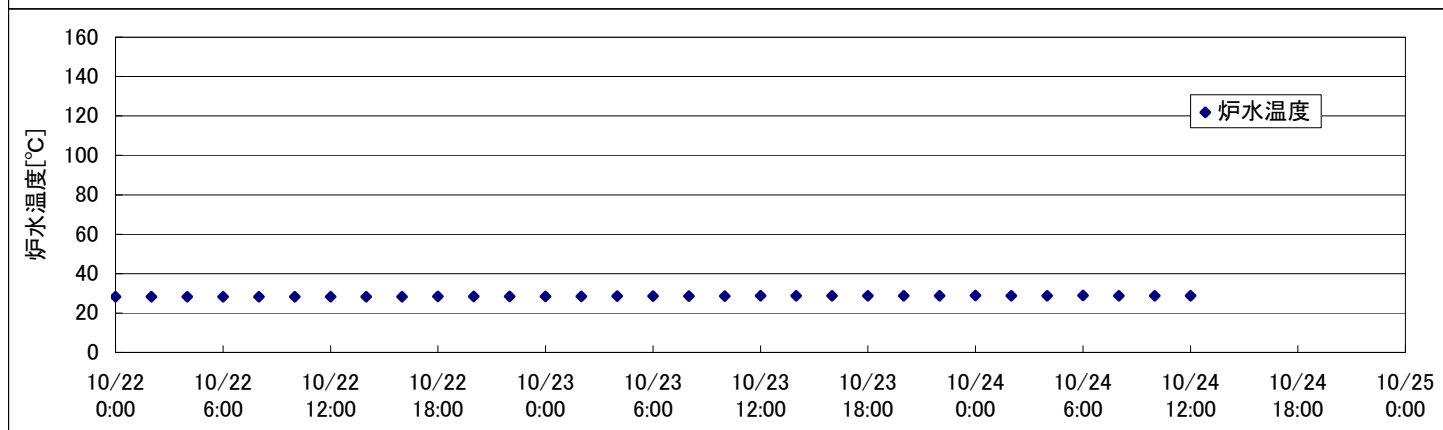
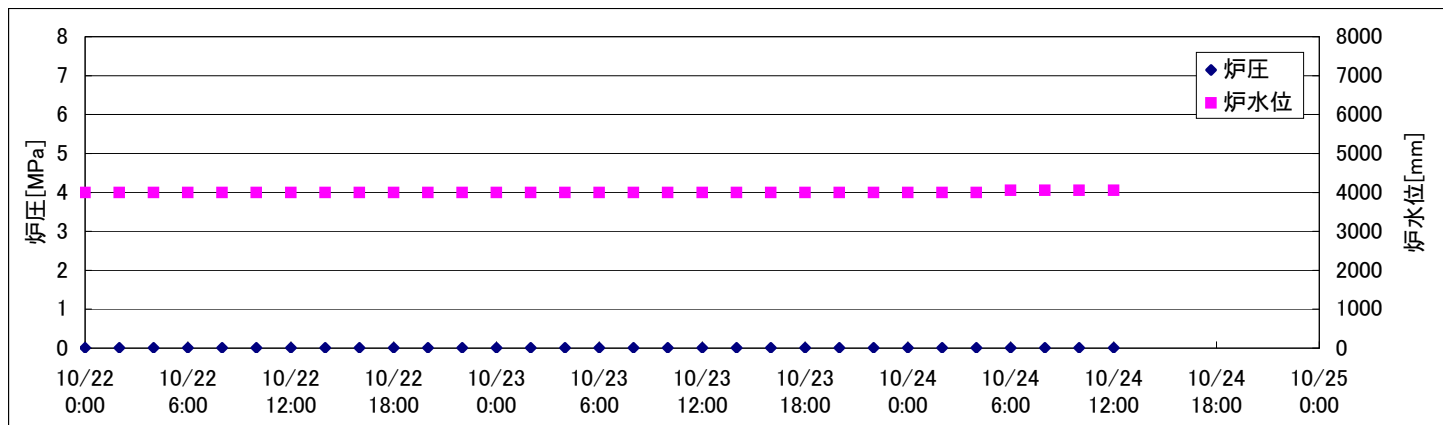
2F-1号機



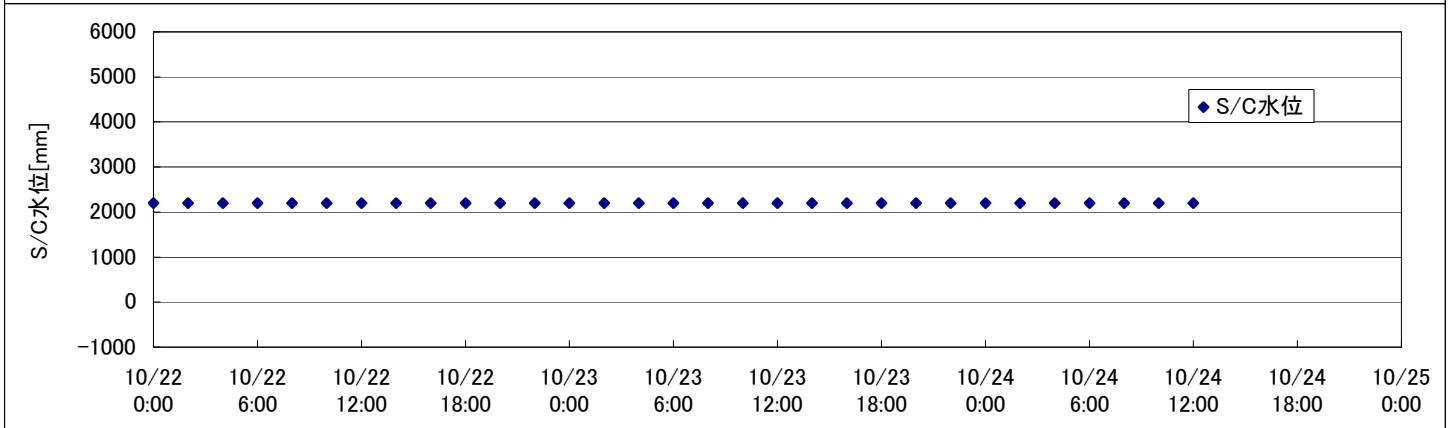
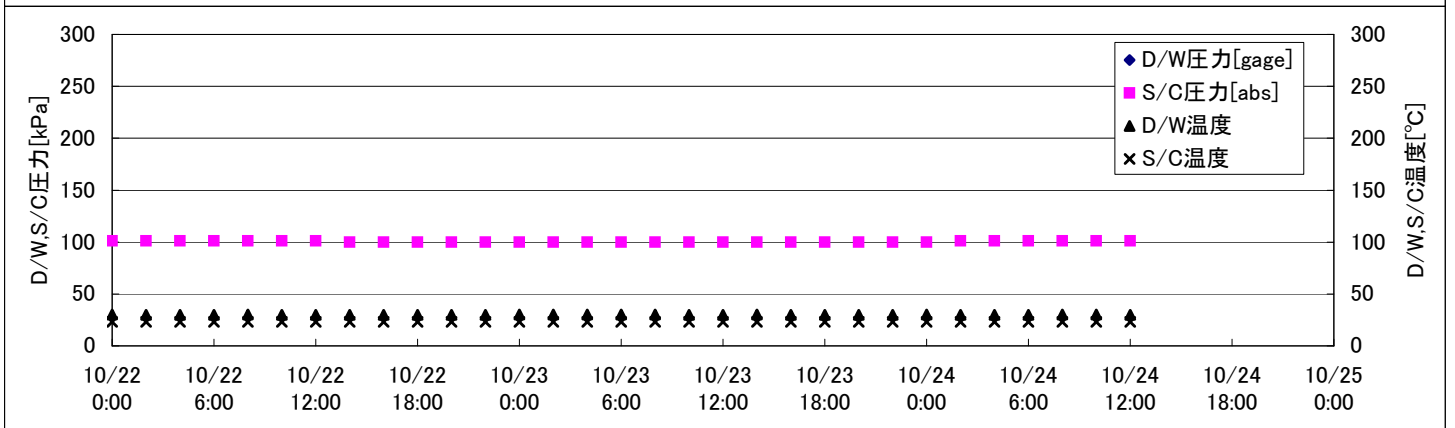
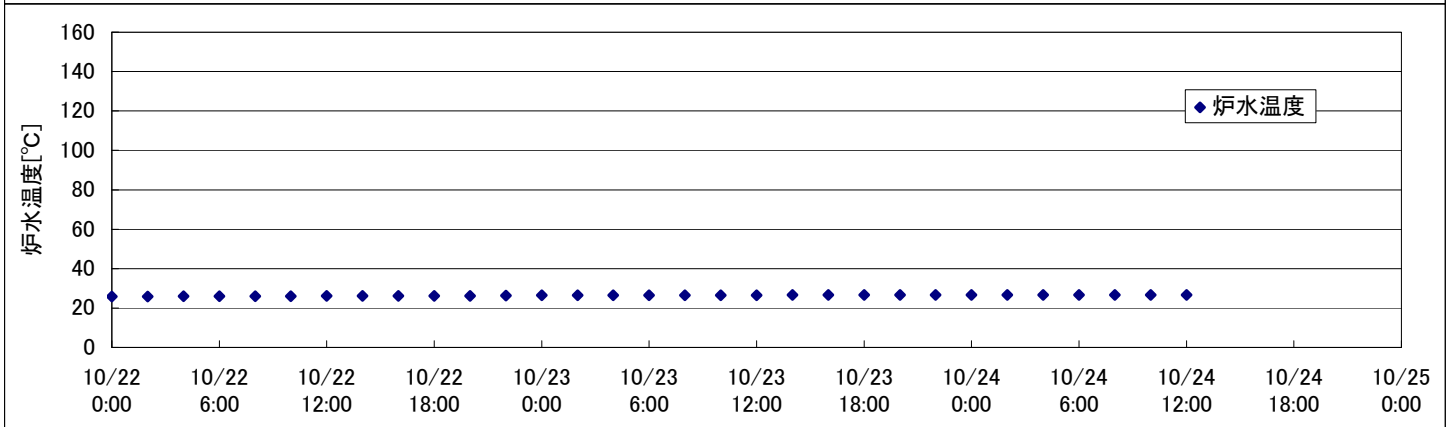
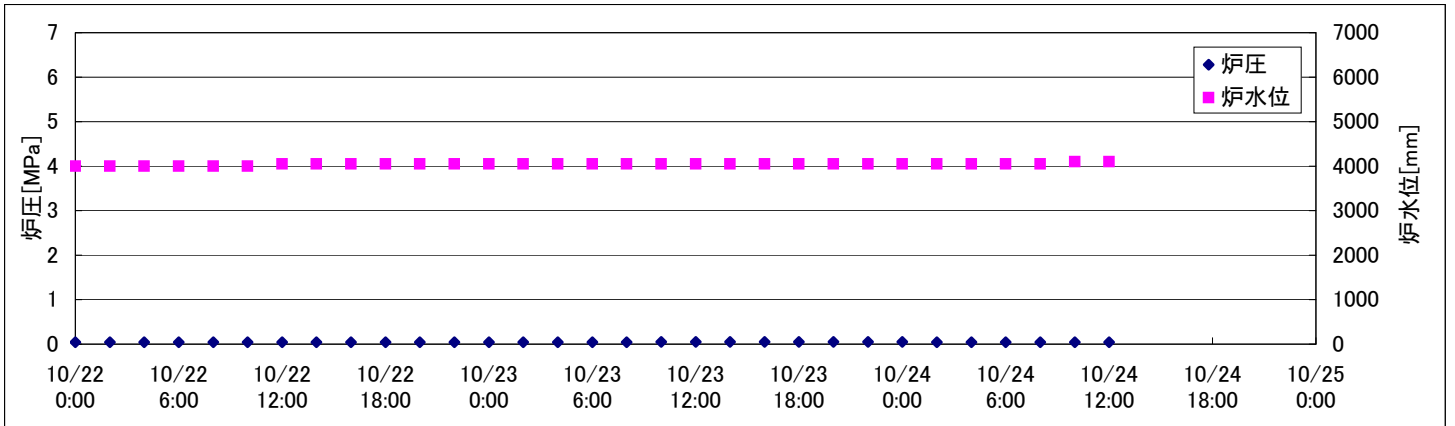
2F-2号機



2F-3号機



2F-4号機



2F-4号機

※燃料頂部(TAF)からの水位 = 炉水位 + 4200[mm]

時間	炉圧 [MPa (gage)]	炉水位 [mm] 停止時	炉水温度[°C]	D/W圧力 [kPa(gage)]	D/W温度 [°C]	S/C圧力 [kPa(abs)]	S/C水位 [mm]	S/C温度 [°C]
2011/10/22 0:00	0.04	4000	25.9		30.1	101	2200	23
2011/10/22 2:00	0.04	4000	25.9		30.0	101	2200	23
2011/10/22 4:00	0.04	4000	26.0		30.0	101	2200	23
2011/10/22 6:00	0.04	4000	26.0		30.0	101	2200	23
2011/10/22 8:00	0.04	4000	26.0		30.1	101	2200	23
2011/10/22 10:00	0.04	4000	26.0		30.0	101	2200	23
2011/10/22 12:00	0.04	4050	26.1		30.0	101	2200	23
2011/10/22 14:00	0.04	4050	26.1		30.0	100	2200	23
2011/10/22 16:00	0.04	4050	26.1		30.0	100	2200	23
2011/10/22 18:00	0.04	4050	26.2		30.0	100	2200	23
2011/10/22 20:00	0.04	4050	26.2		30.0	100	2200	23
2011/10/22 22:00	0.04	4050	26.3		30.0	100	2200	23
2011/10/23 0:00	0.04	4050	26.4		30.1	100	2200	23
2011/10/23 2:00	0.04	4050	26.4		30.1	100	2200	23
2011/10/23 4:00	0.04	4050	26.4		30.1	100	2200	23
2011/10/23 6:00	0.04	4050	26.5		30.1	100	2200	23
2011/10/23 8:00	0.04	4050	26.5		30.1	100	2200	23
2011/10/23 10:00	0.05	4050	26.5		30.0	100	2200	23
2011/10/23 12:00	0.05	4050	26.5		30.0	100	2200	23
2011/10/23 14:00	0.05	4050	26.6		30.1	100	2200	23
2011/10/23 16:00	0.05	4050	26.6		30.0	100	2200	23
2011/10/23 18:00	0.05	4050	26.6		30.0	100	2200	23
2011/10/23 20:00	0.05	4050	26.6		30.0	100	2200	23
2011/10/23 22:00	0.05	4050	26.6		30.0	100	2200	23
2011/10/24 0:00	0.05	4050	26.6		30.1	100	2200	23
2011/10/24 2:00	0.04	4050	26.6		30.0	101	2200	23
2011/10/24 4:00	0.04	4050	26.6		30.0	101	2200	23
2011/10/24 6:00	0.04	4050	26.6		30.0	101	2200	23
2011/10/24 8:00	0.04	4050	26.7		30.1	101	2200	23
2011/10/24 10:00	0.04	4100	26.6		30.1	101	2200	23
2011/10/24 12:00	0.04	4100	26.6		30.0	101	2200	23
2011/10/24 14:00								
2011/10/24 16:00								
2011/10/24 18:00								
2011/10/24 20:00								
2011/10/24 22:00								
2011/10/25 0:00								

D/W圧力について

・パーソナルエアロックドア開放中であるため、9/6 10:00 より記載せず