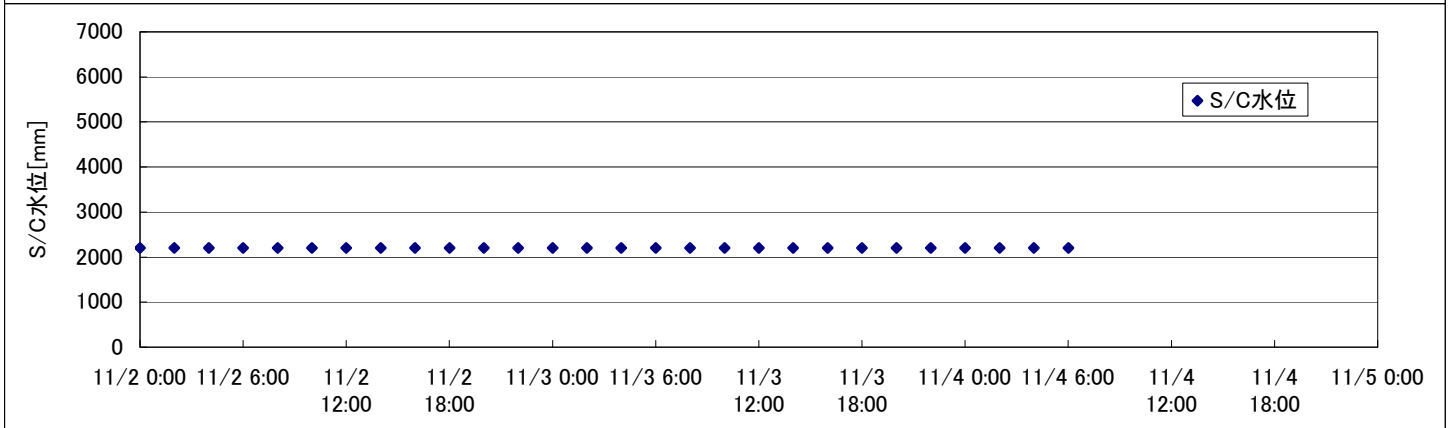
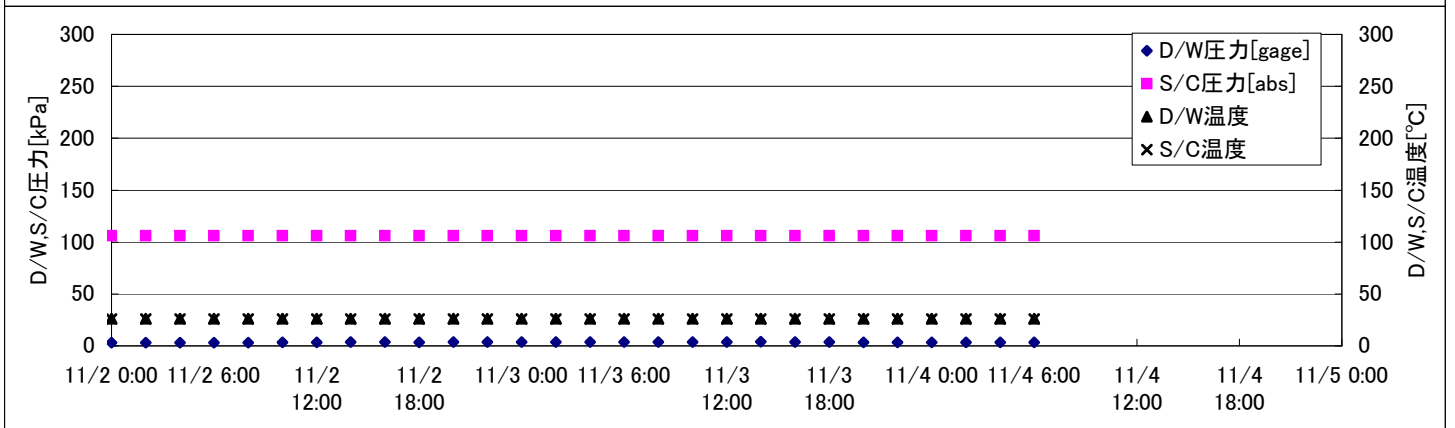
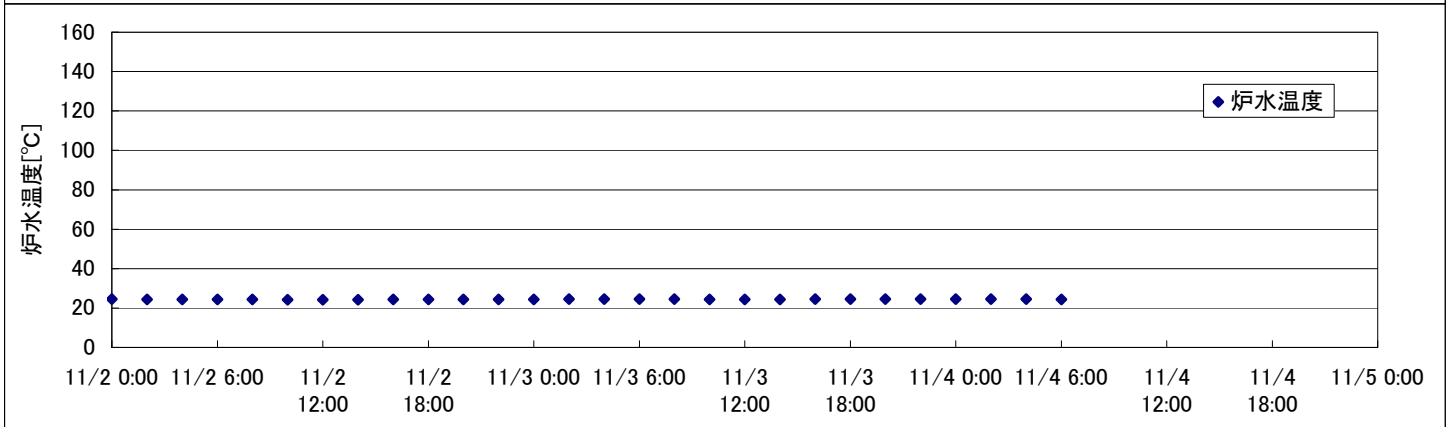
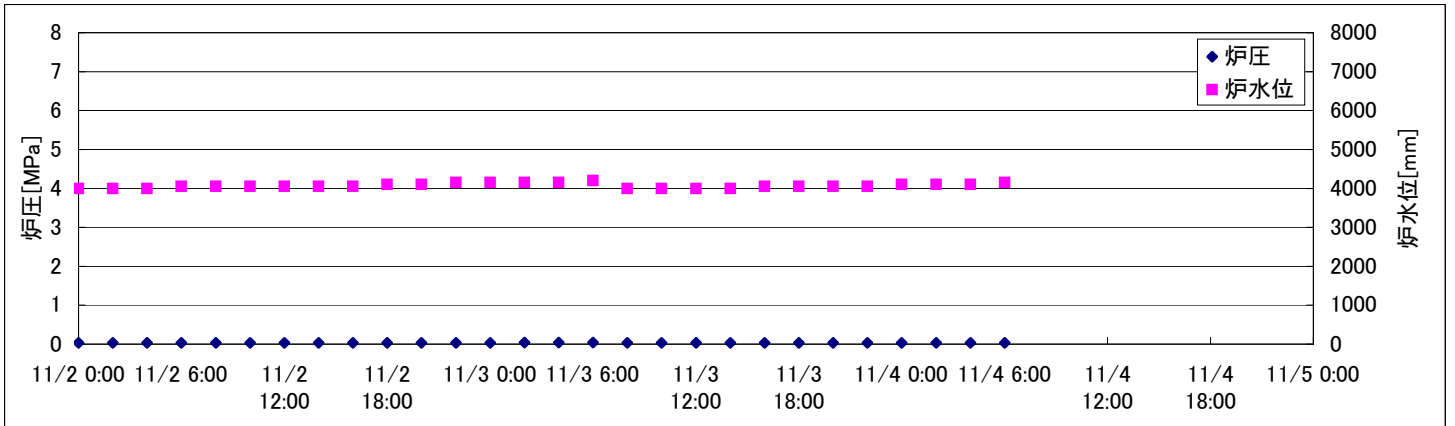
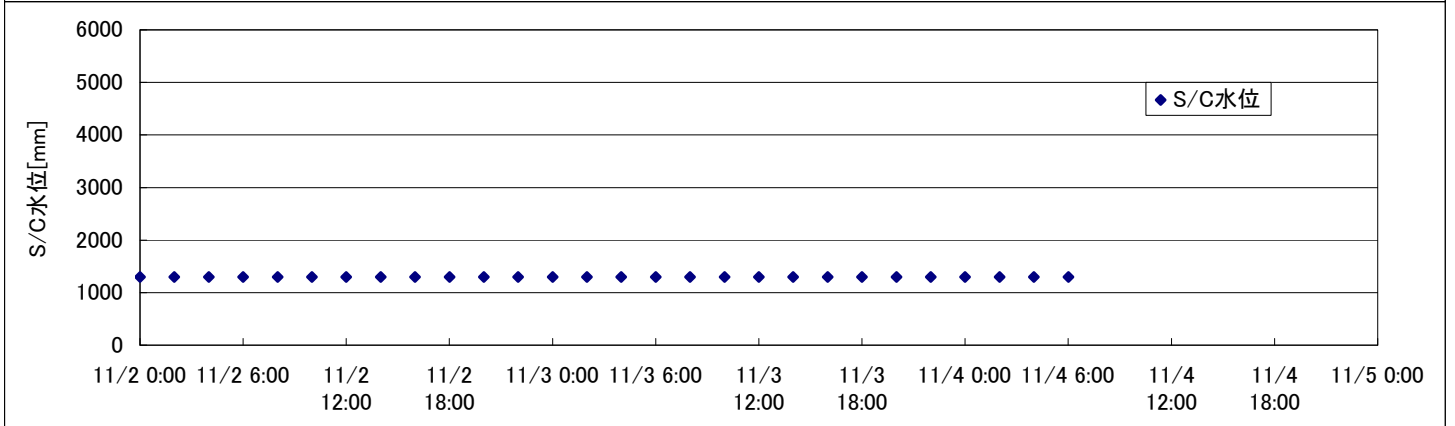
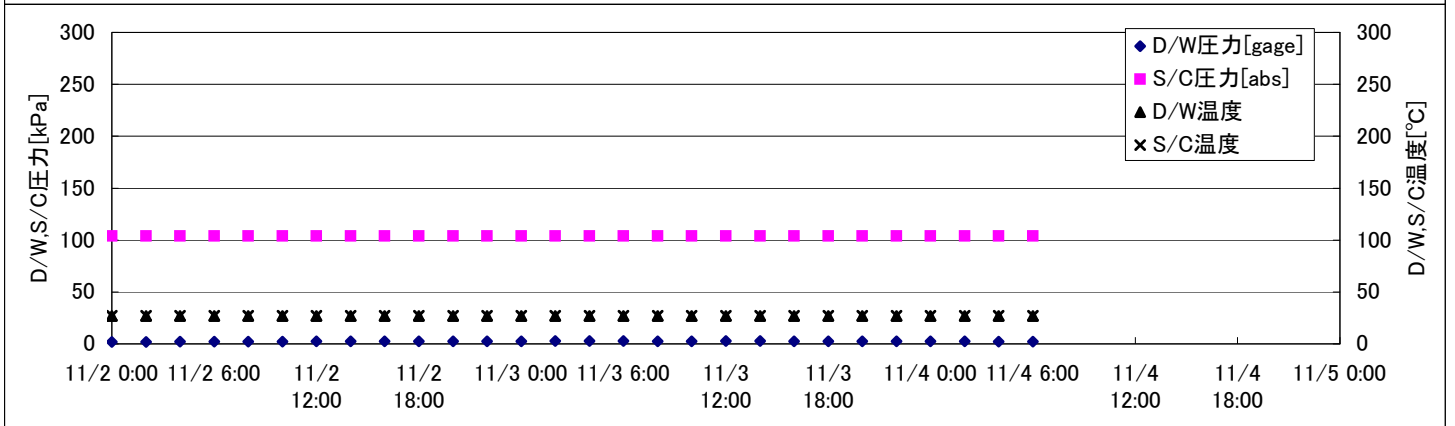
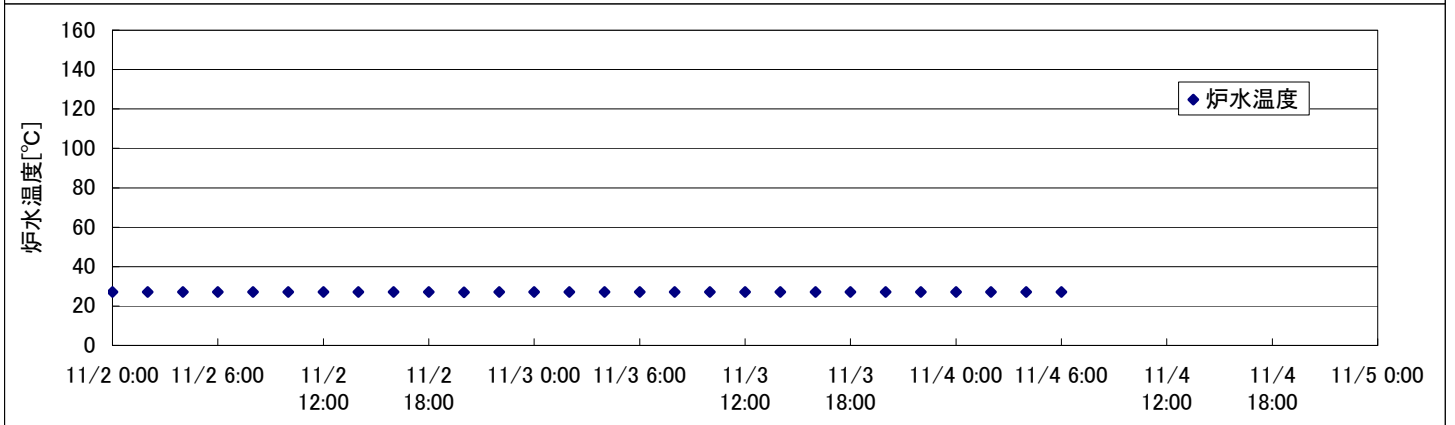
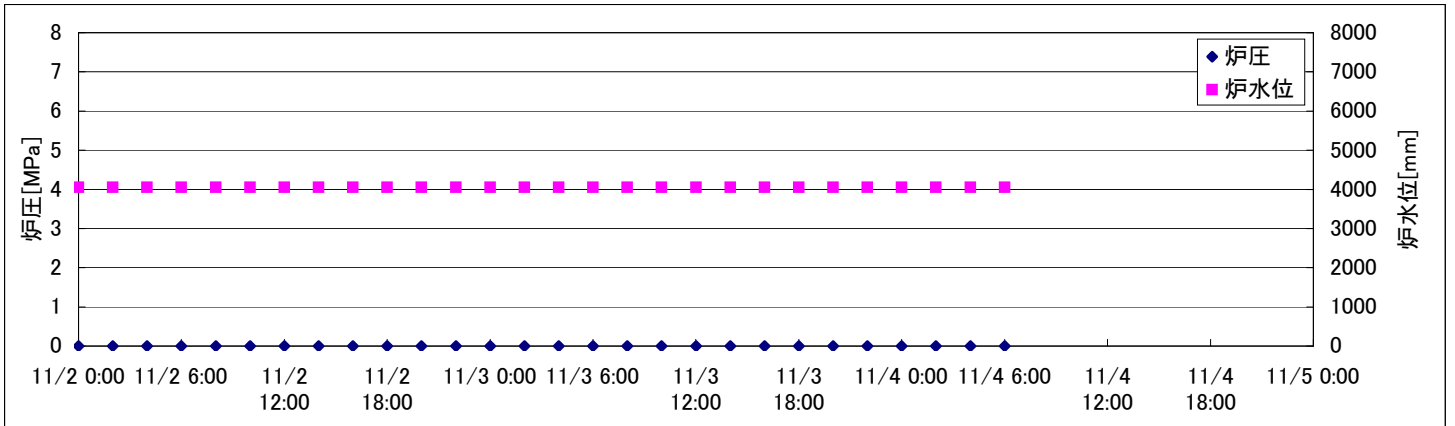


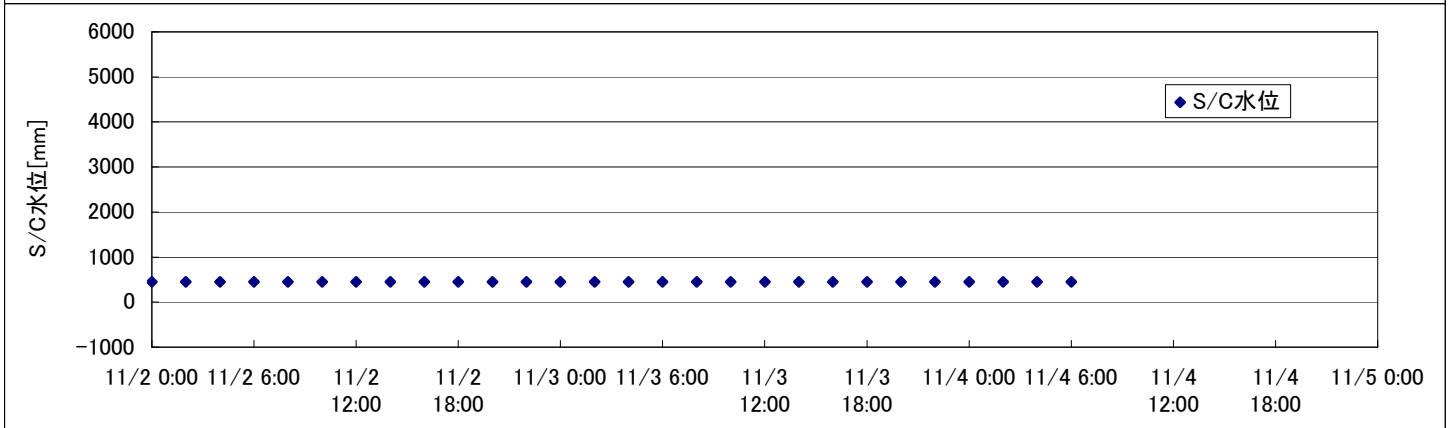
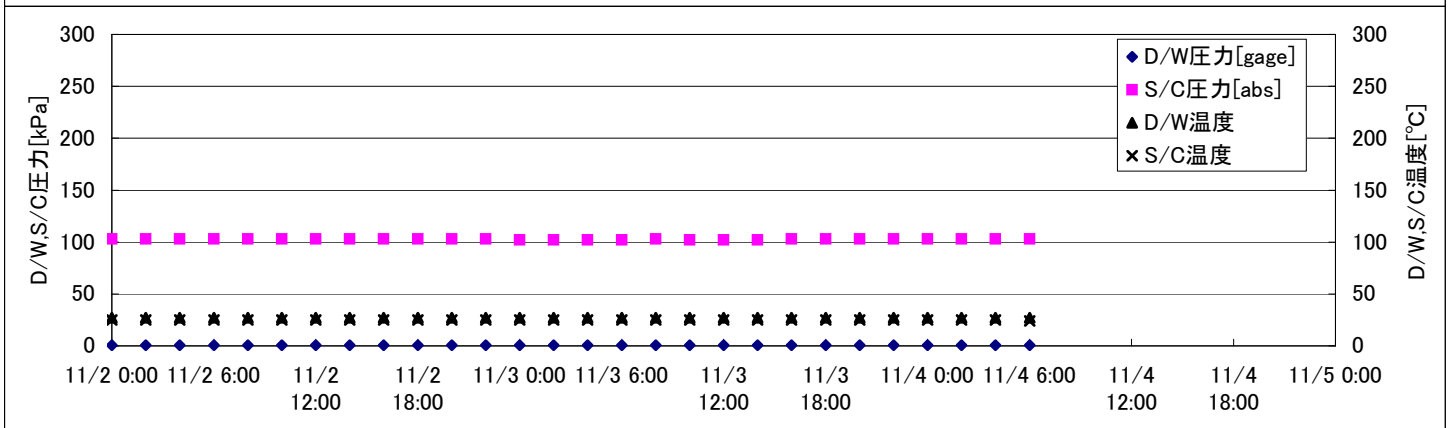
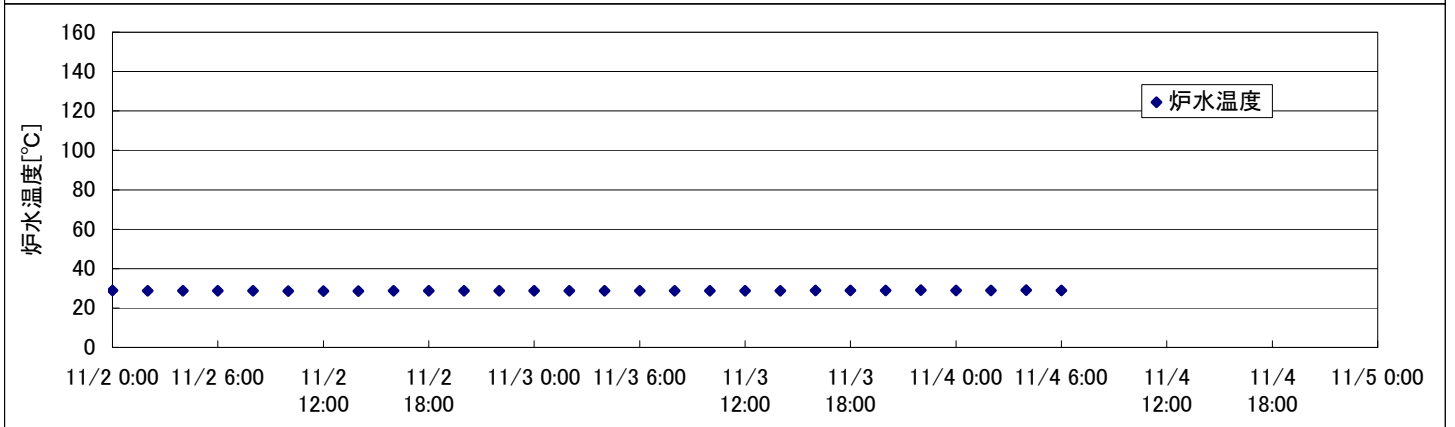
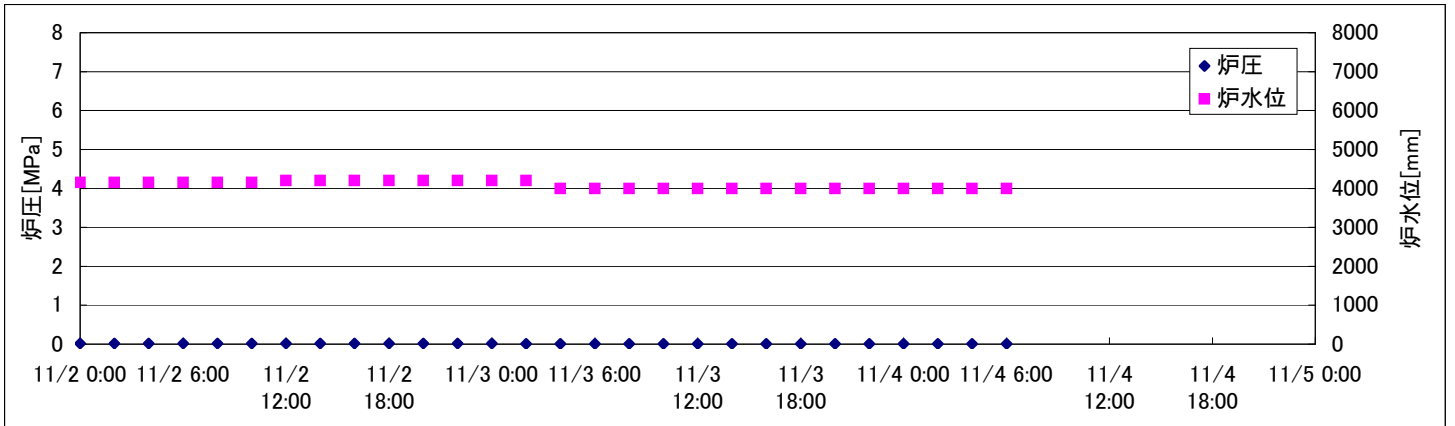
2F-1号機



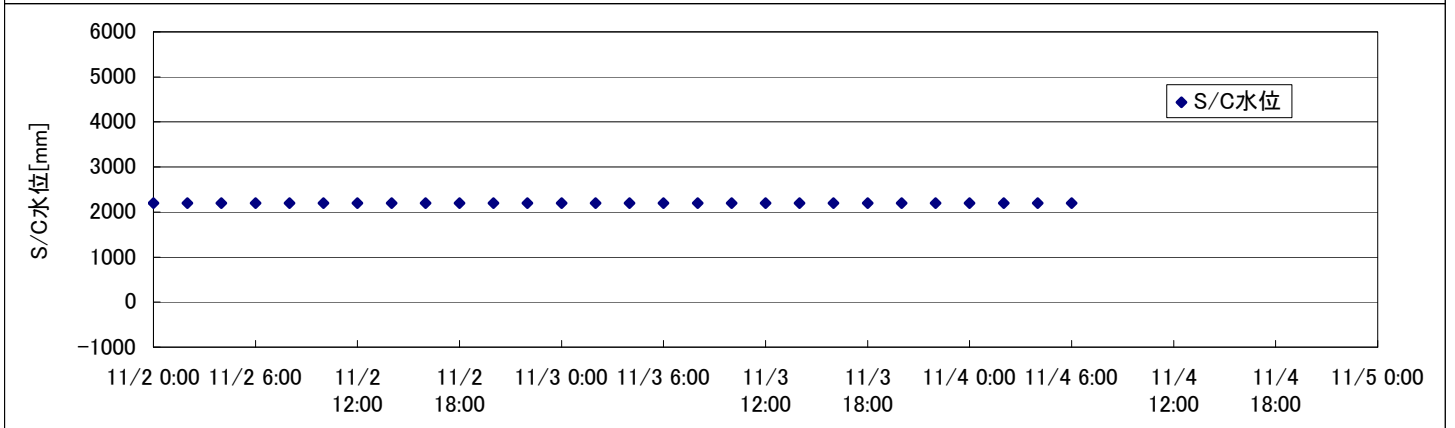
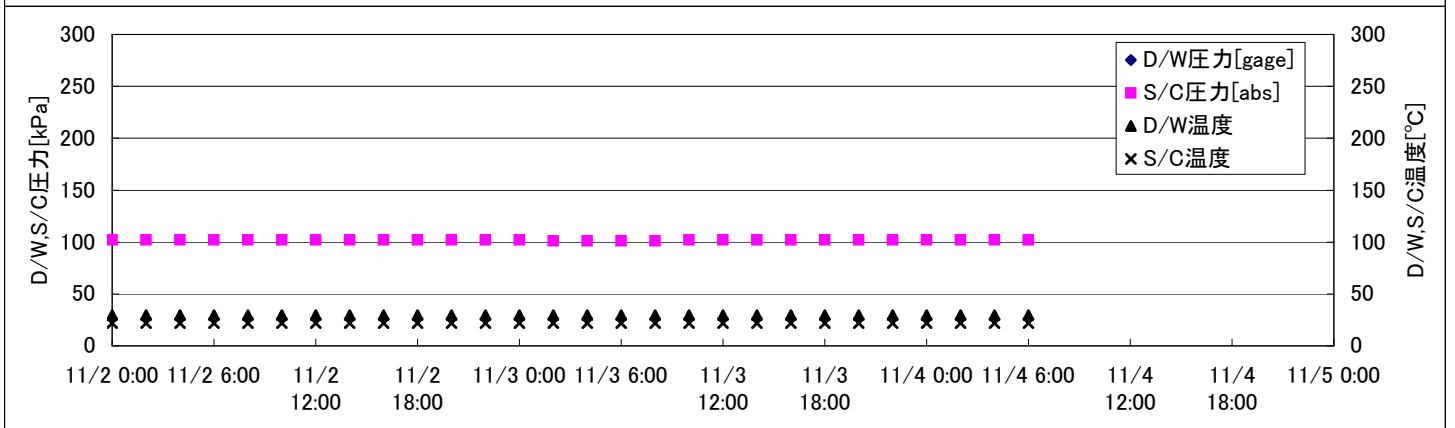
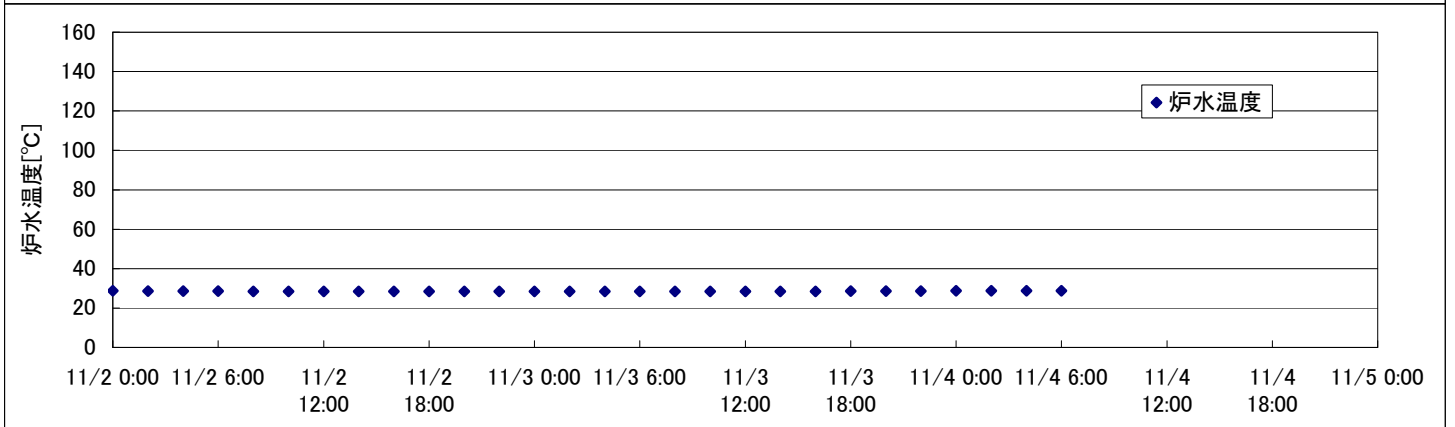
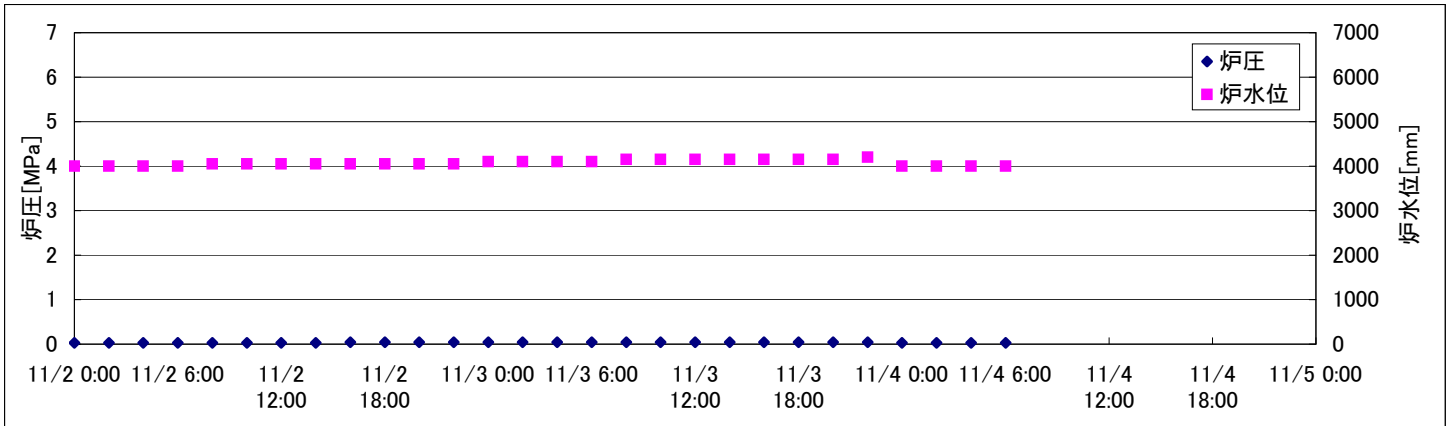
2F-2号機



2F-3号機



2F-4号機



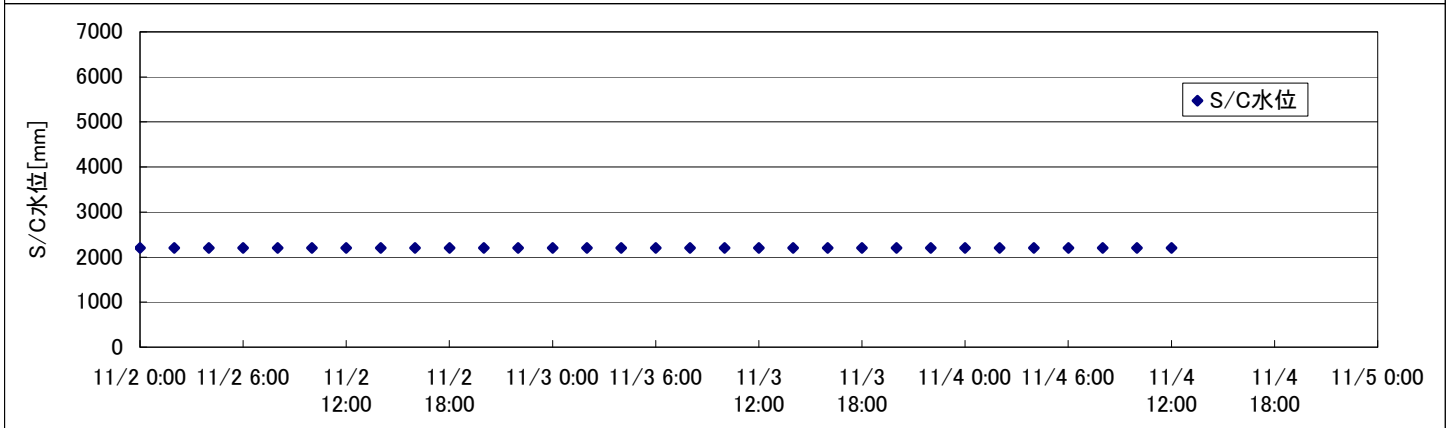
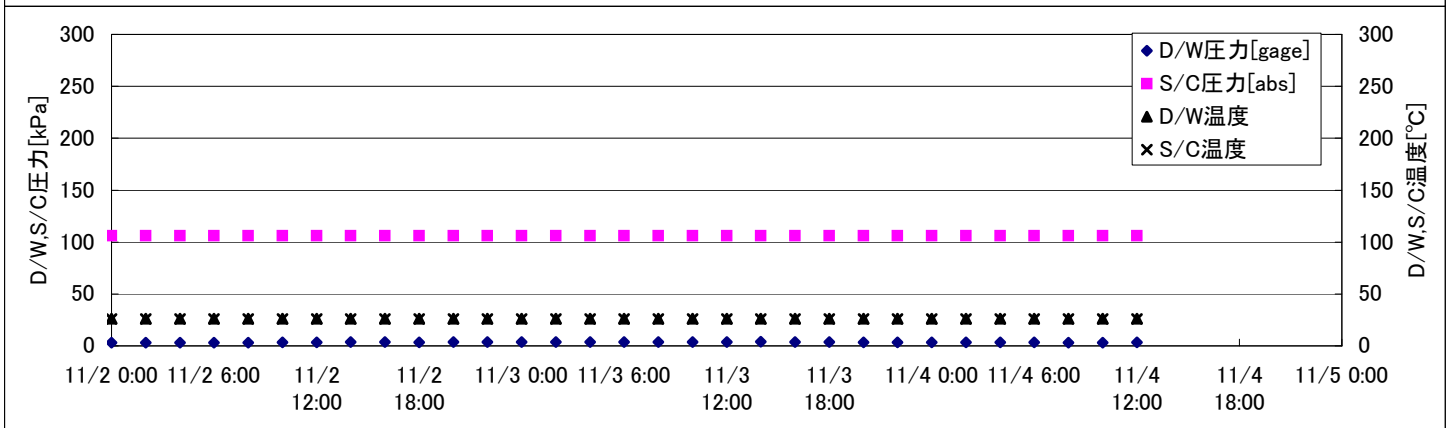
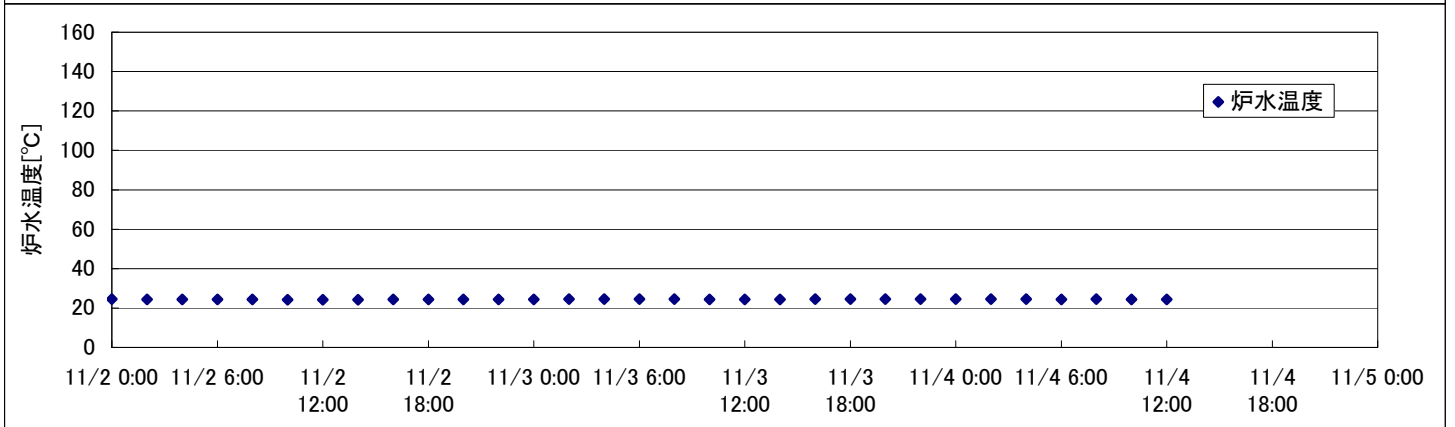
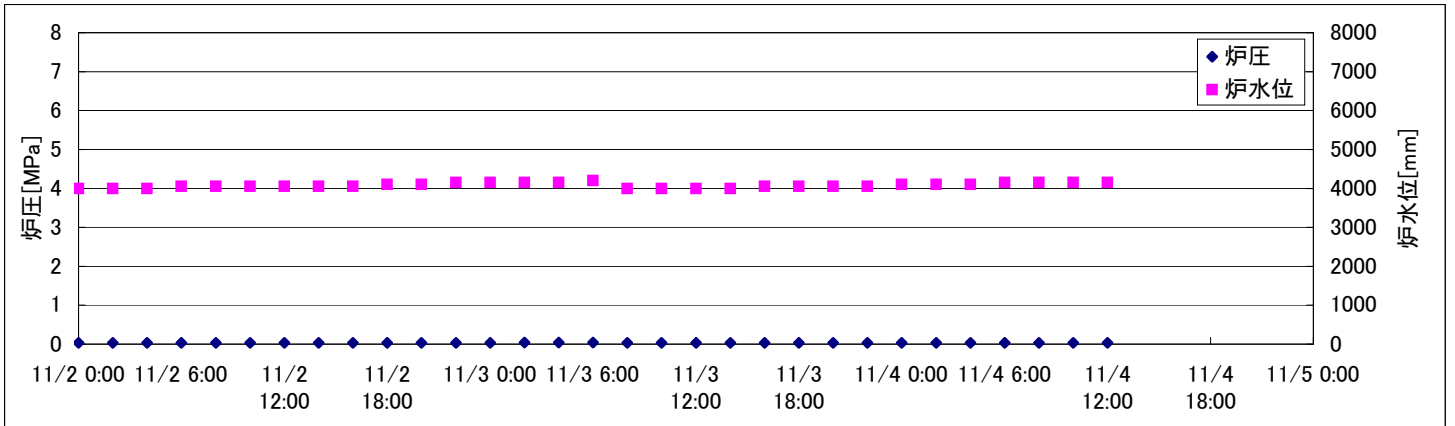
2F-4号機

※燃料頂部(TAF)からの水位 = 炉水位 + 4200[mm]

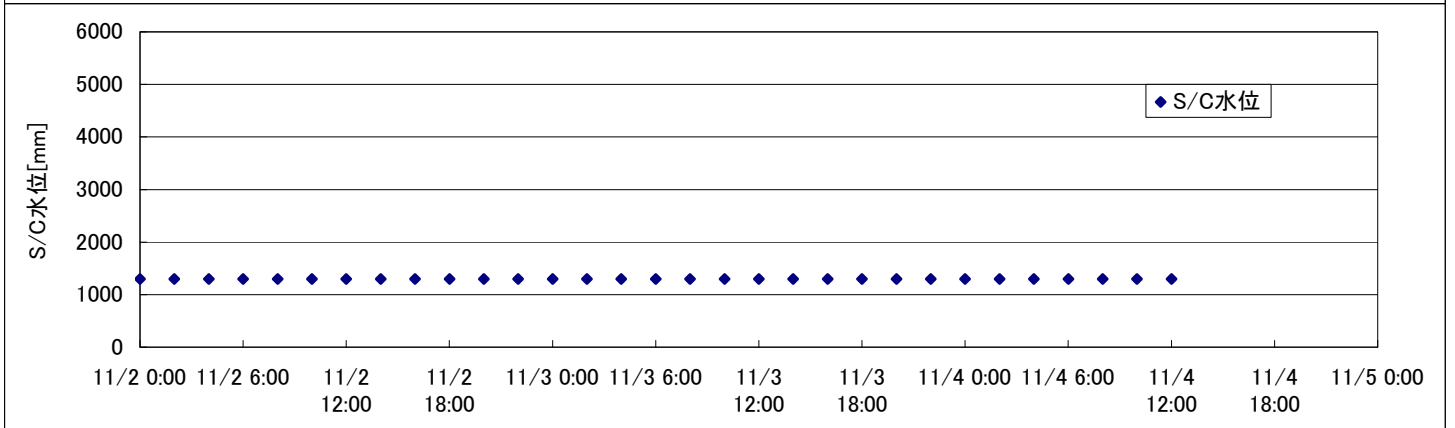
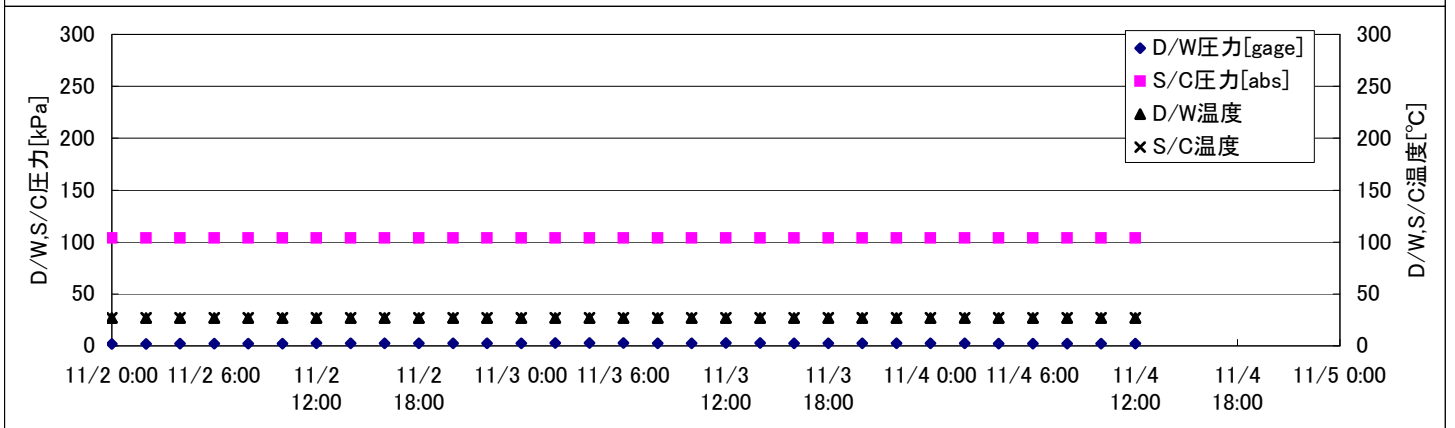
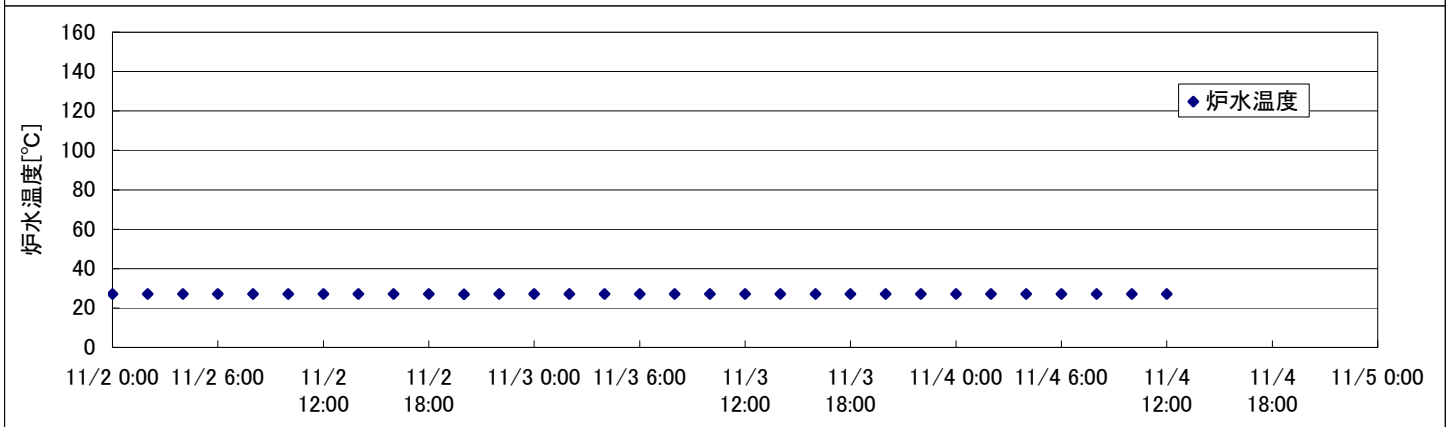
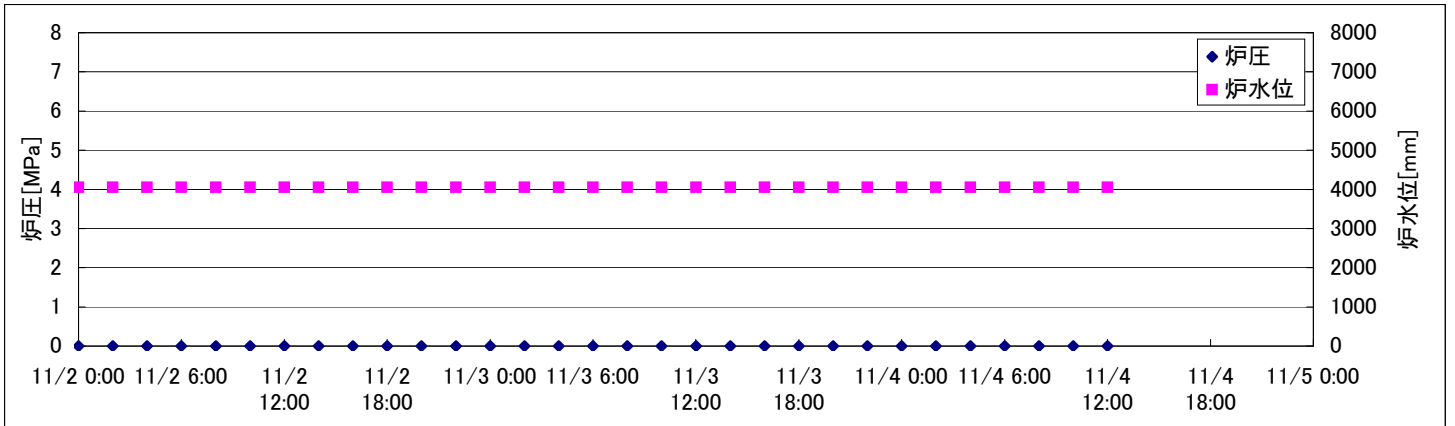
| 時間 | 炉圧 [MPa (gage)] | 炉水位 [mm] 停止時 | 炉水温度[°C] | D/W圧力 [kPa(gage)] | D/W温度 [°C] | S/C圧力 [kPa(abs)] | S/C水位 [mm] | S/C温度 [°C] |
|-----------------|-----------------------|--------------------|----------|----------------------|---------------|---------------------|---------------|---------------|
| 2011/11/2 0:00 | 0.03 | 4000 | 28.7 | | 29.5 | 102 | 2200 | 22 |
| 2011/11/2 2:00 | 0.03 | 4000 | 28.6 | | 29.6 | 102 | 2200 | 22 |
| 2011/11/2 4:00 | 0.03 | 4000 | 28.6 | | 29.6 | 102 | 2200 | 22 |
| 2011/11/2 6:00 | 0.03 | 4000 | 28.6 | | 29.6 | 102 | 2200 | 22 |
| 2011/11/2 8:00 | 0.03 | 4050 | 28.5 | | 29.6 | 102 | 2200 | 22 |
| 2011/11/2 10:00 | 0.03 | 4050 | 28.4 | | 29.6 | 102 | 2200 | 22 |
| 2011/11/2 12:00 | 0.03 | 4050 | 28.4 | | 29.6 | 102 | 2200 | 22 |
| 2011/11/2 14:00 | 0.03 | 4050 | 28.4 | | 29.6 | 102 | 2200 | 22 |
| 2011/11/2 16:00 | 0.04 | 4050 | 28.4 | | 29.6 | 102 | 2200 | 22 |
| 2011/11/2 18:00 | 0.04 | 4050 | 28.4 | | 29.6 | 102 | 2200 | 22 |
| 2011/11/2 20:00 | 0.04 | 4050 | 28.5 | | 29.6 | 102 | 2200 | 22 |
| 2011/11/2 22:00 | 0.04 | 4050 | 28.5 | | 29.6 | 102 | 2200 | 22 |
| 2011/11/3 0:00 | 0.04 | 4100 | 28.5 | | 29.6 | 102 | 2200 | 22 |
| 2011/11/3 2:00 | 0.04 | 4100 | 28.5 | | 29.6 | 101 | 2200 | 22 |
| 2011/11/3 4:00 | 0.04 | 4100 | 28.5 | | 29.6 | 101 | 2200 | 22 |
| 2011/11/3 6:00 | 0.04 | 4100 | 28.5 | | 29.6 | 101 | 2200 | 22 |
| 2011/11/3 8:00 | 0.04 | 4150 | 28.4 | | 29.6 | 101 | 2200 | 22 |
| 2011/11/3 10:00 | 0.04 | 4150 | 28.4 | | 29.5 | 102 | 2200 | 22 |
| 2011/11/3 12:00 | 0.04 | 4150 | 28.5 | | 29.5 | 102 | 2200 | 22 |
| 2011/11/3 14:00 | 0.04 | 4150 | 28.5 | | 29.6 | 102 | 2200 | 22 |
| 2011/11/3 16:00 | 0.04 | 4150 | 28.5 | | 29.6 | 102 | 2200 | 22 |
| 2011/11/3 18:00 | 0.04 | 4150 | 28.6 | | 29.6 | 102 | 2200 | 22 |
| 2011/11/3 20:00 | 0.04 | 4150 | 28.6 | | 29.6 | 102 | 2200 | 22 |
| 2011/11/3 22:00 | 0.04 | 4200 | 28.6 | | 29.6 | 102 | 2200 | 22 |
| 2011/11/4 0:00 | 0.03 | 4000 | 28.7 | | 29.6 | 102 | 2200 | 22 |
| 2011/11/4 2:00 | 0.03 | 4000 | 28.7 | | 29.6 | 102 | 2200 | 22 |
| 2011/11/4 4:00 | 0.03 | 4000 | 28.7 | | 29.6 | 102 | 2200 | 22 |
| 2011/11/4 6:00 | 0.03 | 4000 | 28.7 | | 29.6 | 102 | 2200 | 22 |
| 2011/11/4 8:00 | | | | | | | | |
| 2011/11/4 10:00 | | | | | | | | |
| 2011/11/4 12:00 | | | | | | | | |
| 2011/11/4 14:00 | | | | | | | | |
| 2011/11/4 16:00 | | | | | | | | |
| 2011/11/4 18:00 | | | | | | | | |
| 2011/11/4 20:00 | | | | | | | | |
| 2011/11/4 22:00 | | | | | | | | |
| 2011/11/5 0:00 | | | | | | | | |

D/W圧力について
 ・パーソナルエアロックドア開放中であるため、9/6 10:00 より記載せず

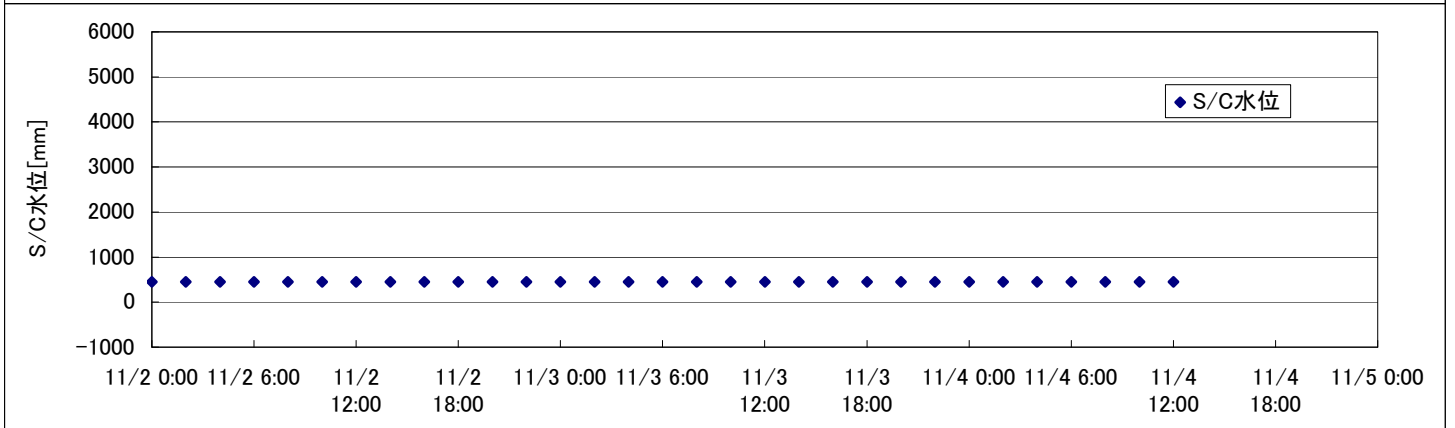
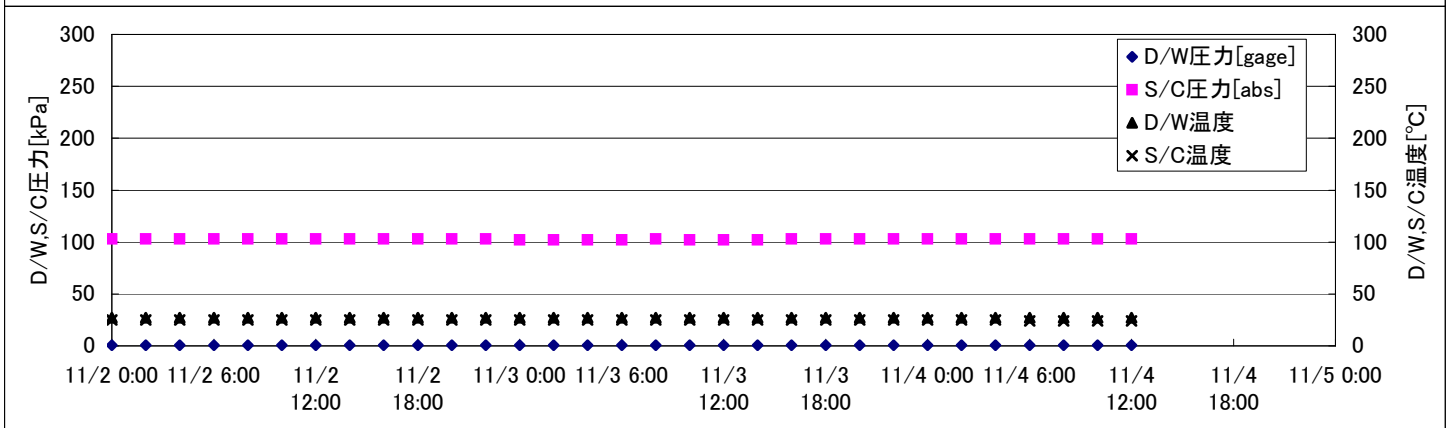
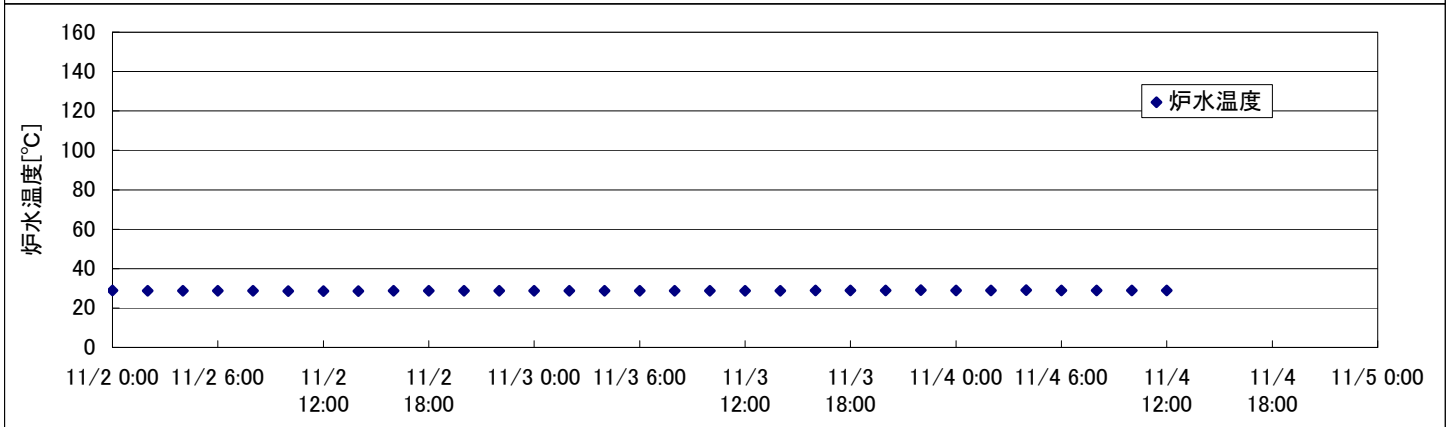
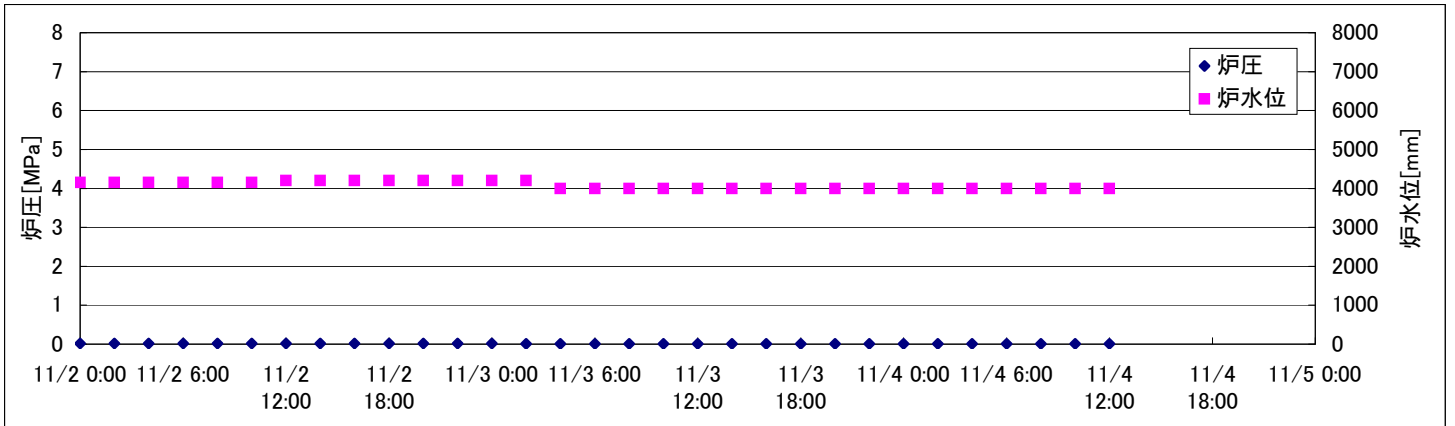
2F-1号機



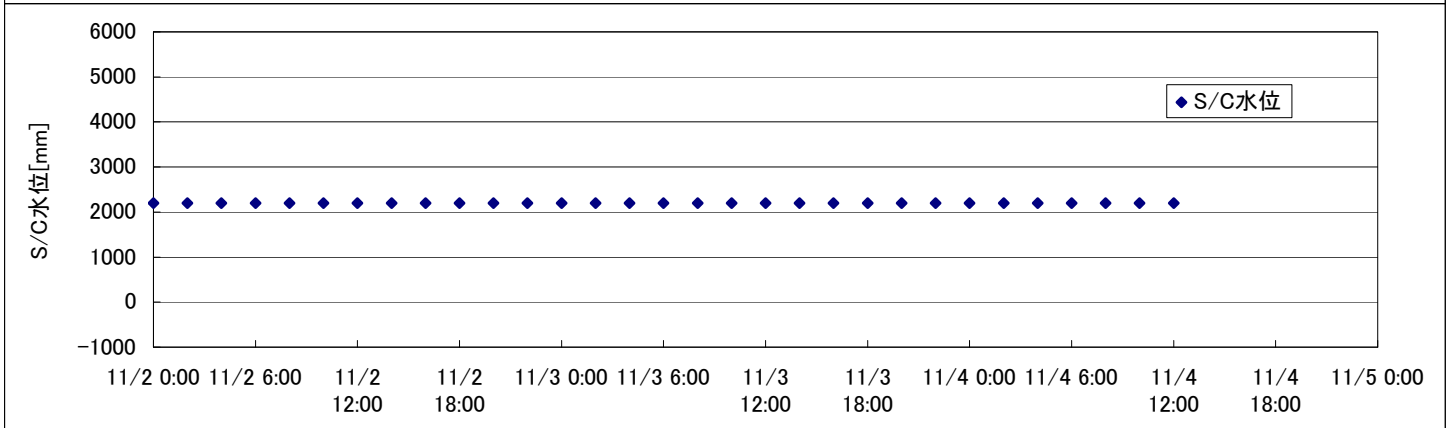
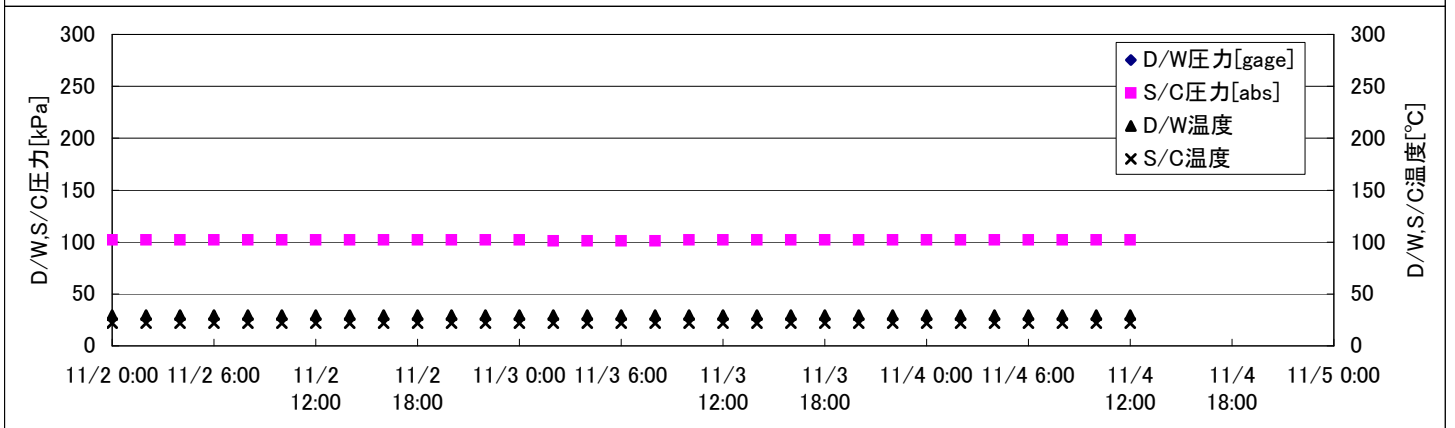
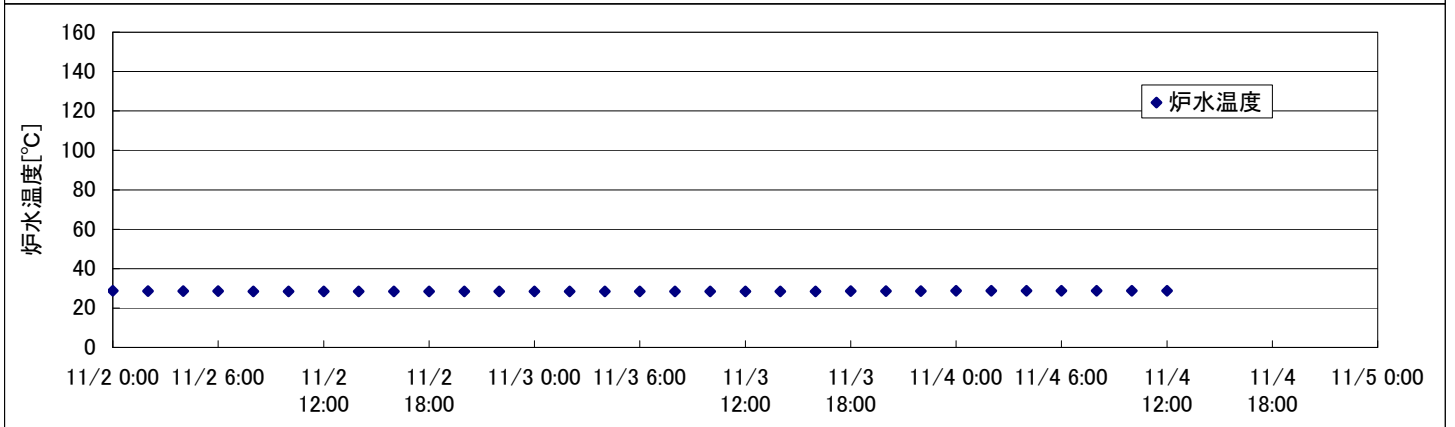
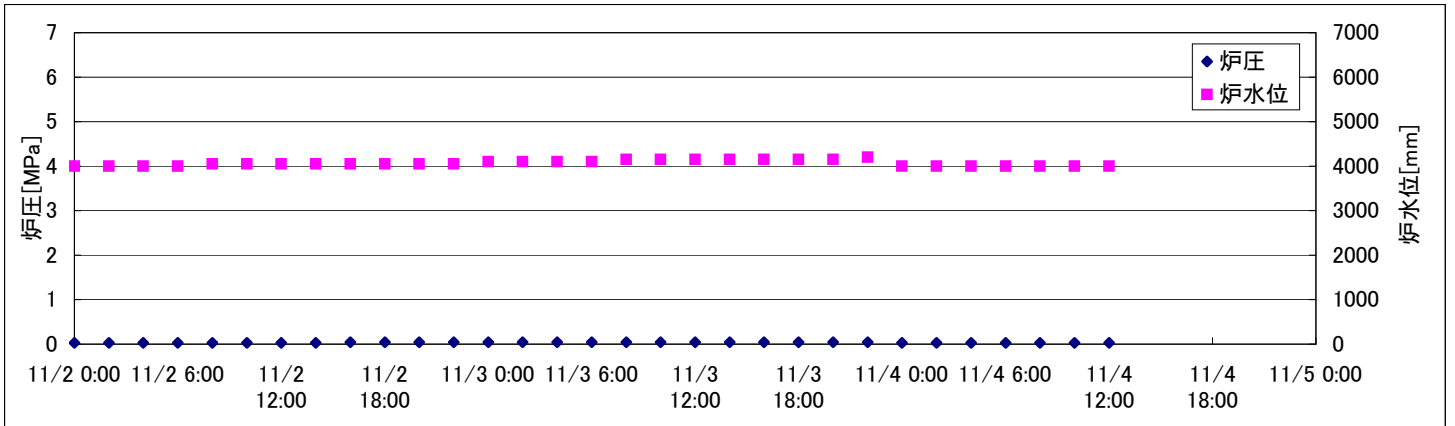
2F-2号機



2F-3号機



2F-4号機



2F-4号機

※燃料頂部(TAF)からの水位 = 炉水位 + 4200[mm]

| 時間 | 炉圧 [MPa (gage)] | 炉水位 [mm] 停止時 | 炉水温度[°C] | D/W圧力 [kPa(gage)] | D/W温度 [°C] | S/C圧力 [kPa(abs)] | S/C水位 [mm] | S/C温度 [°C] |
|------------------------|-----------------------|--------------------|-------------|----------------------|---------------|---------------------|---------------|---------------|
| 2011/11/2 0:00 | 0.03 | 4000 | 28.7 | | 29.5 | 102 | 2200 | 22 |
| 2011/11/2 2:00 | 0.03 | 4000 | 28.6 | | 29.6 | 102 | 2200 | 22 |
| 2011/11/2 4:00 | 0.03 | 4000 | 28.6 | | 29.6 | 102 | 2200 | 22 |
| 2011/11/2 6:00 | 0.03 | 4000 | 28.6 | | 29.6 | 102 | 2200 | 22 |
| 2011/11/2 8:00 | 0.03 | 4050 | 28.5 | | 29.6 | 102 | 2200 | 22 |
| 2011/11/2 10:00 | 0.03 | 4050 | 28.4 | | 29.6 | 102 | 2200 | 22 |
| 2011/11/2 12:00 | 0.03 | 4050 | 28.4 | | 29.6 | 102 | 2200 | 22 |
| 2011/11/2 14:00 | 0.03 | 4050 | 28.4 | | 29.6 | 102 | 2200 | 22 |
| 2011/11/2 16:00 | 0.04 | 4050 | 28.4 | | 29.6 | 102 | 2200 | 22 |
| 2011/11/2 18:00 | 0.04 | 4050 | 28.4 | | 29.6 | 102 | 2200 | 22 |
| 2011/11/2 20:00 | 0.04 | 4050 | 28.5 | | 29.6 | 102 | 2200 | 22 |
| 2011/11/2 22:00 | 0.04 | 4050 | 28.5 | | 29.6 | 102 | 2200 | 22 |
| 2011/11/3 0:00 | 0.04 | 4100 | 28.5 | | 29.6 | 102 | 2200 | 22 |
| 2011/11/3 2:00 | 0.04 | 4100 | 28.5 | | 29.6 | 101 | 2200 | 22 |
| 2011/11/3 4:00 | 0.04 | 4100 | 28.5 | | 29.6 | 101 | 2200 | 22 |
| 2011/11/3 6:00 | 0.04 | 4100 | 28.5 | | 29.6 | 101 | 2200 | 22 |
| 2011/11/3 8:00 | 0.04 | 4150 | 28.4 | | 29.6 | 101 | 2200 | 22 |
| 2011/11/3 10:00 | 0.04 | 4150 | 28.4 | | 29.5 | 102 | 2200 | 22 |
| 2011/11/3 12:00 | 0.04 | 4150 | 28.5 | | 29.5 | 102 | 2200 | 22 |
| 2011/11/3 14:00 | 0.04 | 4150 | 28.5 | | 29.6 | 102 | 2200 | 22 |
| 2011/11/3 16:00 | 0.04 | 4150 | 28.5 | | 29.6 | 102 | 2200 | 22 |
| 2011/11/3 18:00 | 0.04 | 4150 | 28.6 | | 29.6 | 102 | 2200 | 22 |
| 2011/11/3 20:00 | 0.04 | 4150 | 28.6 | | 29.6 | 102 | 2200 | 22 |
| 2011/11/3 22:00 | 0.04 | 4200 | 28.6 | | 29.6 | 102 | 2200 | 22 |
| 2011/11/4 0:00 | 0.03 | 4000 | 28.7 | | 29.6 | 102 | 2200 | 22 |
| 2011/11/4 2:00 | 0.03 | 4000 | 28.7 | | 29.6 | 102 | 2200 | 22 |
| 2011/11/4 4:00 | 0.03 | 4000 | 28.7 | | 29.6 | 102 | 2200 | 22 |
| 2011/11/4 6:00 | 0.03 | 4000 | 28.7 | | 29.6 | 102 | 2200 | 22 |
| 2011/11/4 8:00 | 0.03 | 4000 | 28.7 | | 29.6 | 102 | 2200 | 22 |
| 2011/11/4 10:00 | 0.03 | 4000 | 28.7 | | 29.6 | 102 | 2200 | 22 |
| 2011/11/4 12:00 | 0.03 | 4000 | 28.7 | | 29.6 | 102 | 2200 | 22 |
| 2011/11/4 14:00 | | | | | | | | |
| 2011/11/4 16:00 | | | | | | | | |
| 2011/11/4 18:00 | | | | | | | | |
| 2011/11/4 20:00 | | | | | | | | |
| 2011/11/4 22:00 | | | | | | | | |
| 2011/11/5 0:00 | | | | | | | | |

D/W圧力について
 ・パーソナルエアロックドア開放中であるため、9/6 10:00 より記載せず