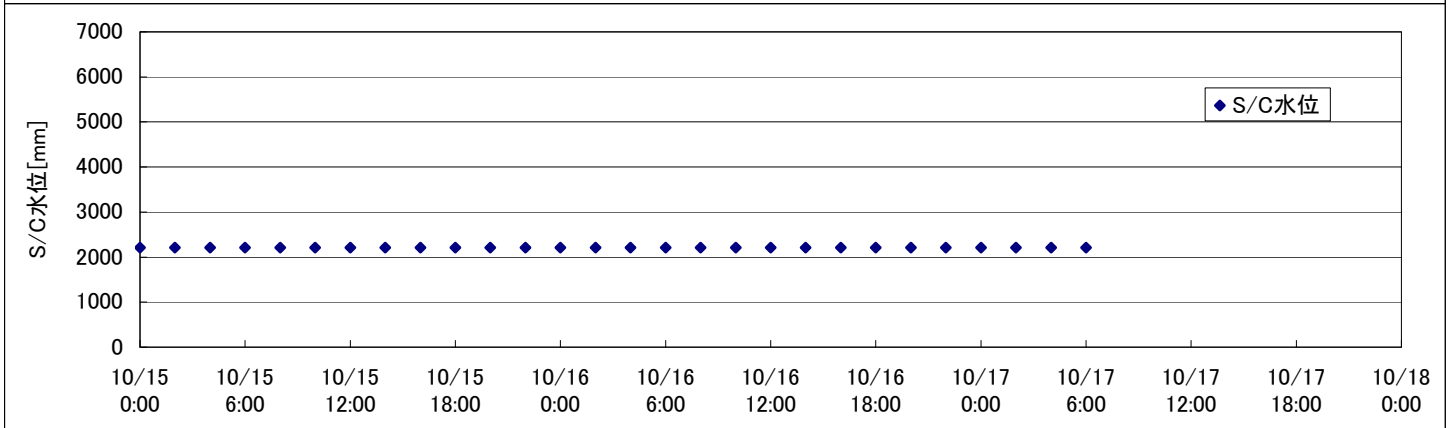
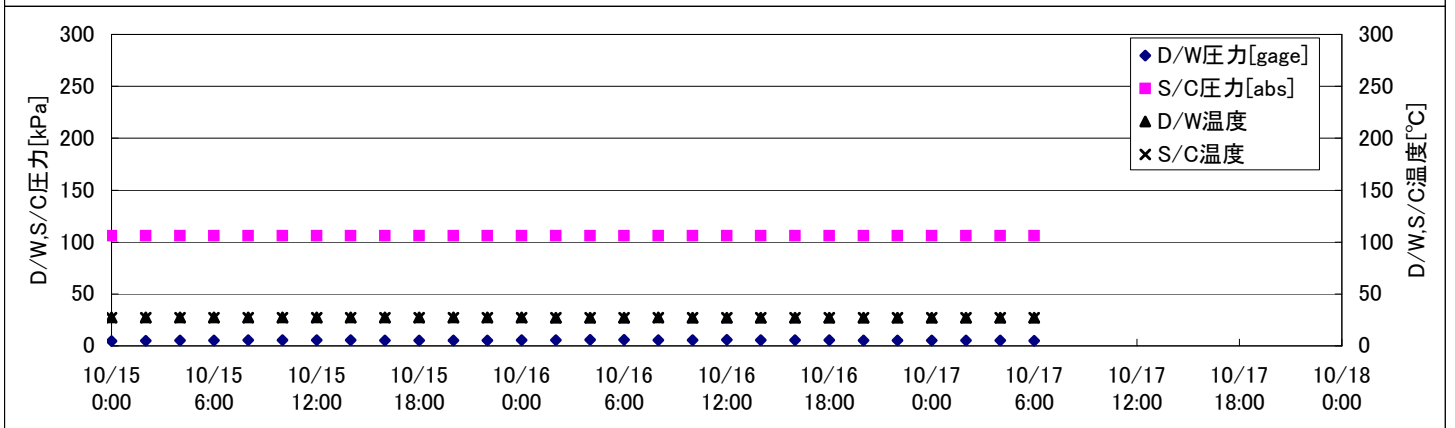
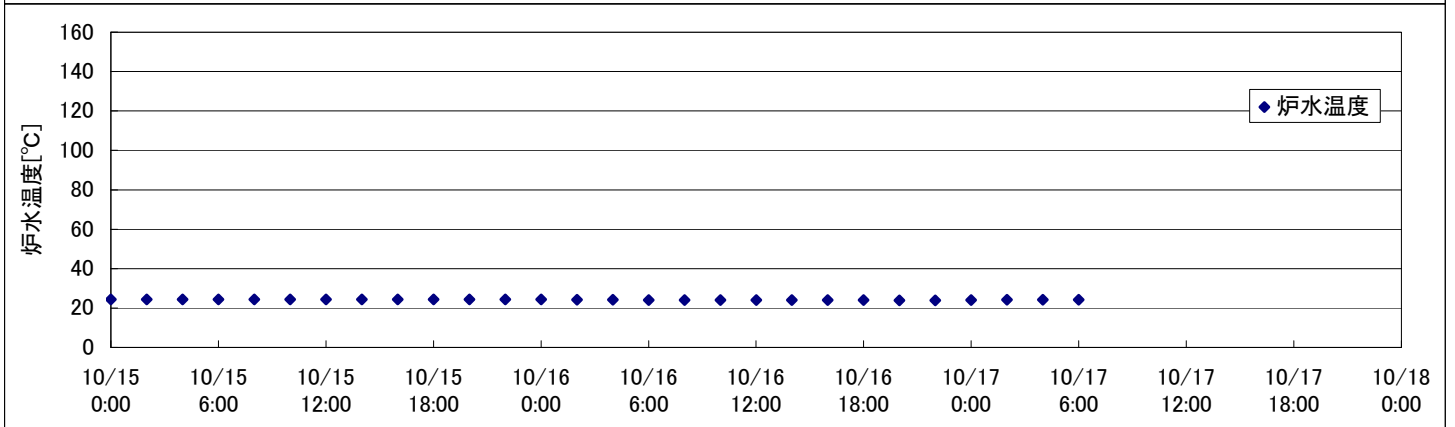
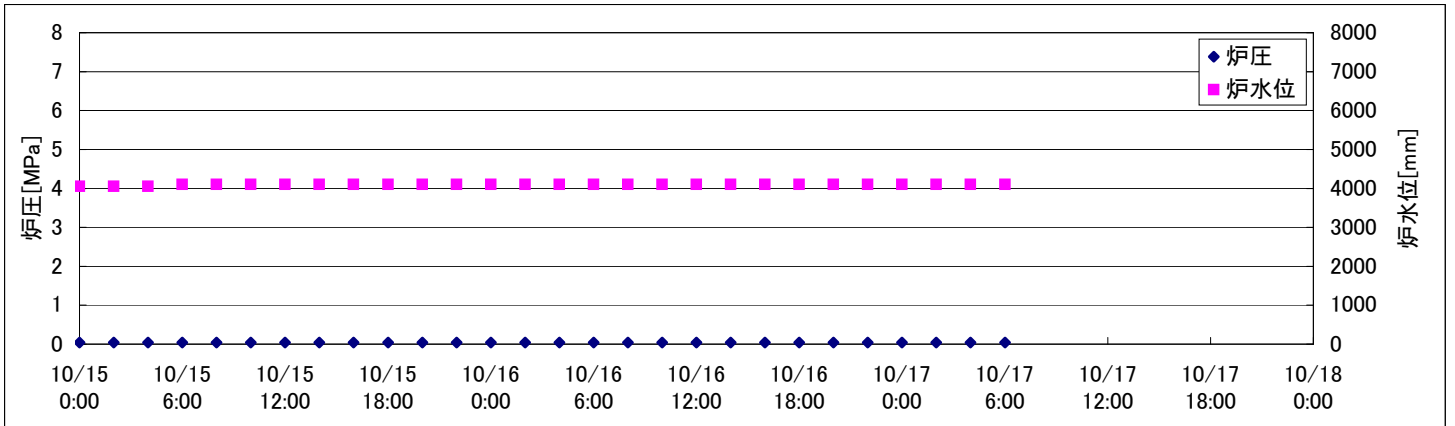
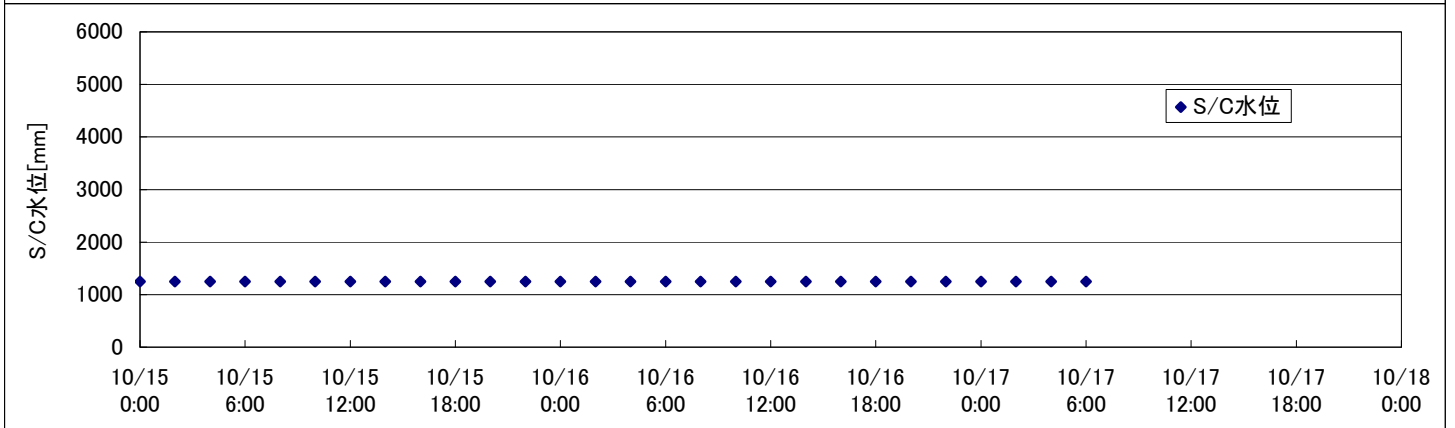
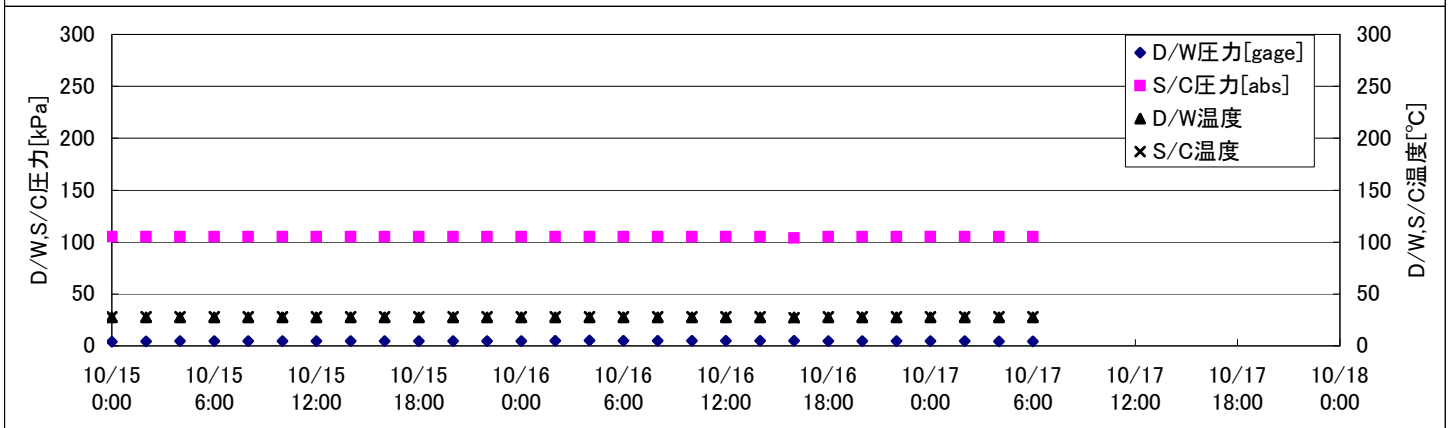
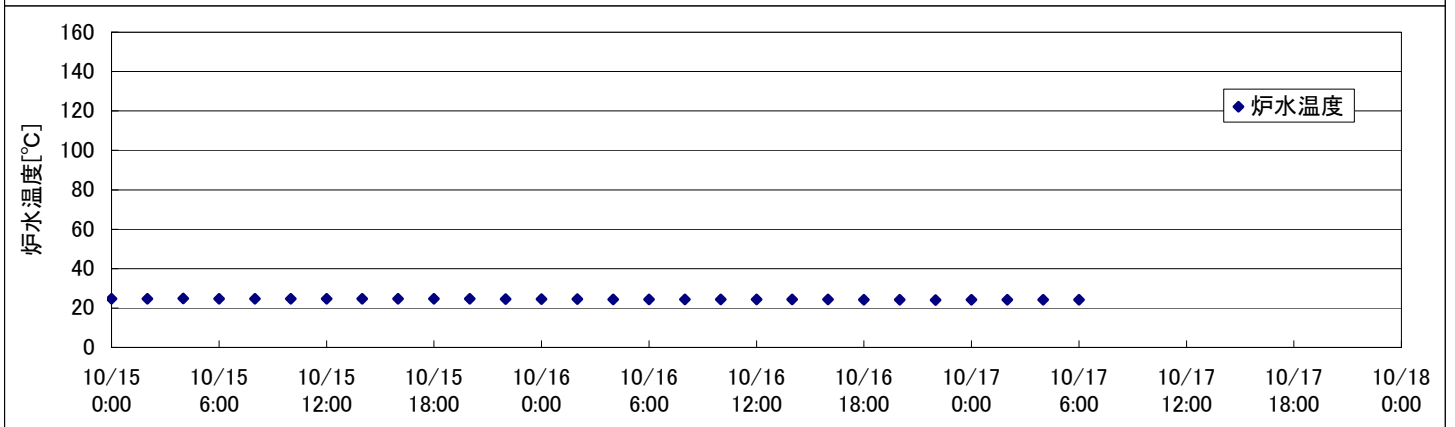
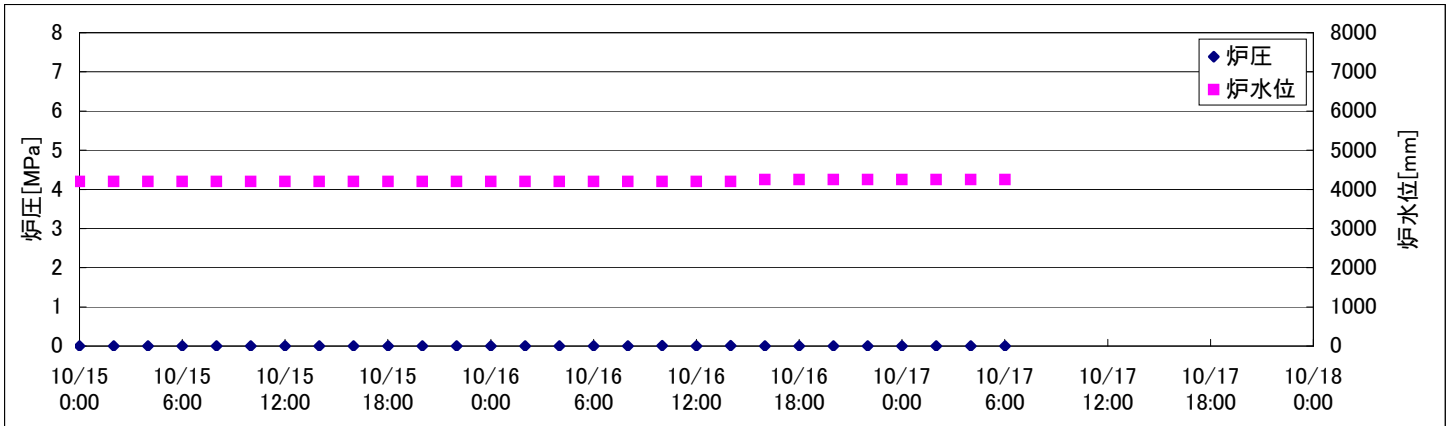


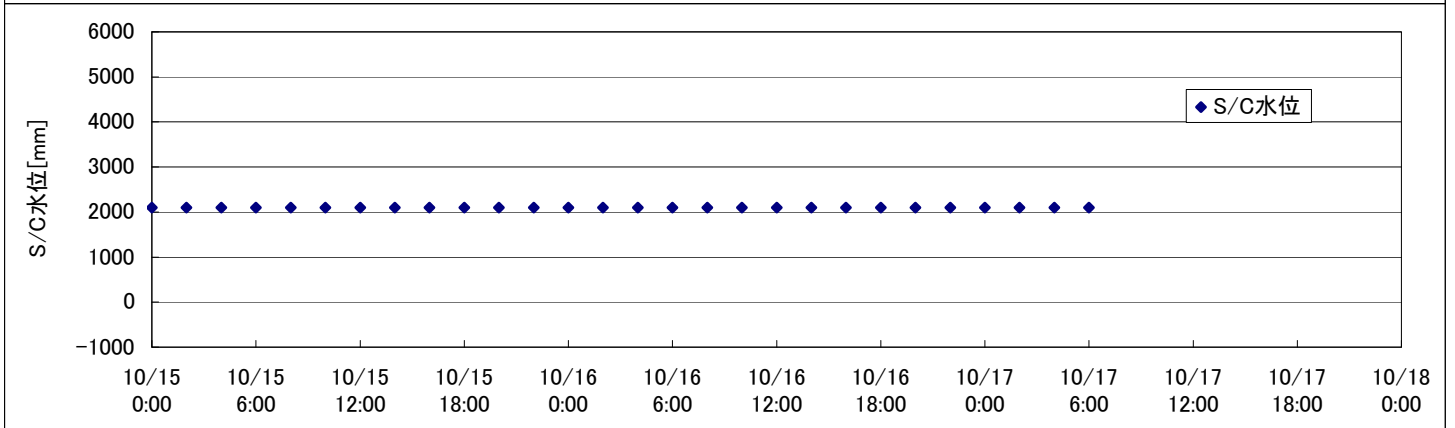
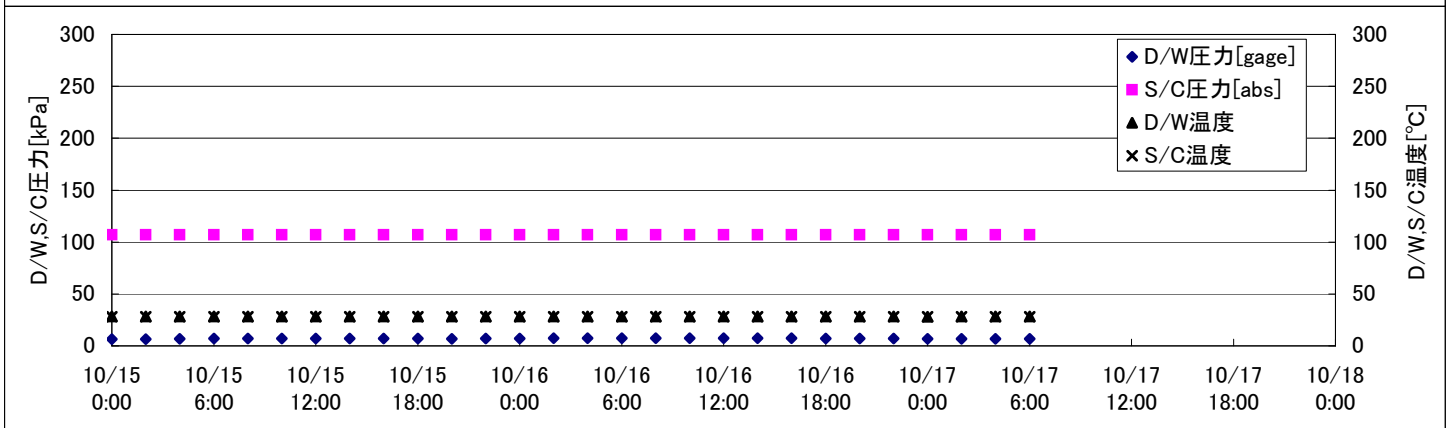
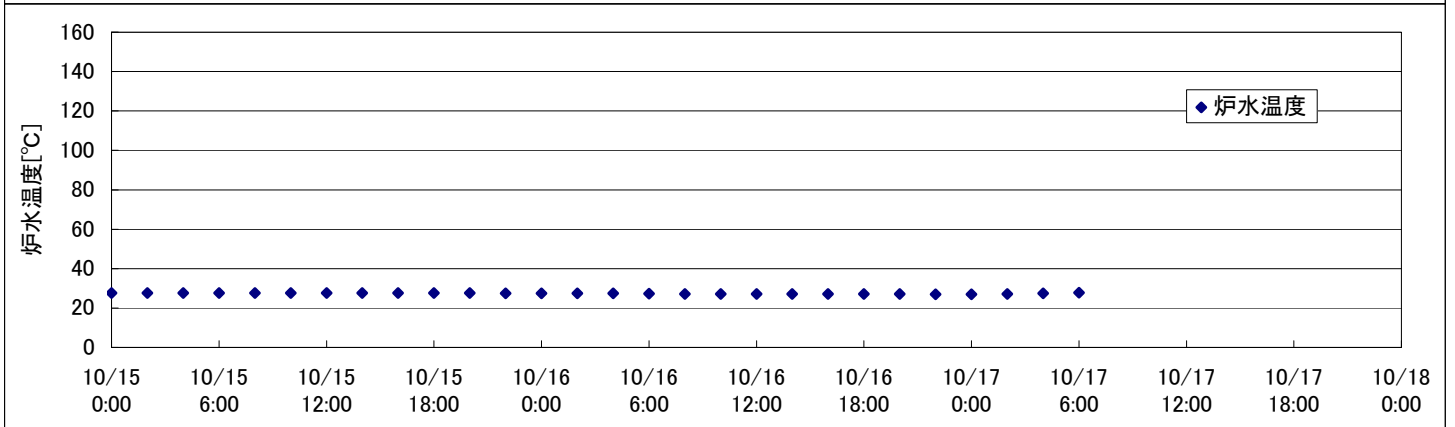
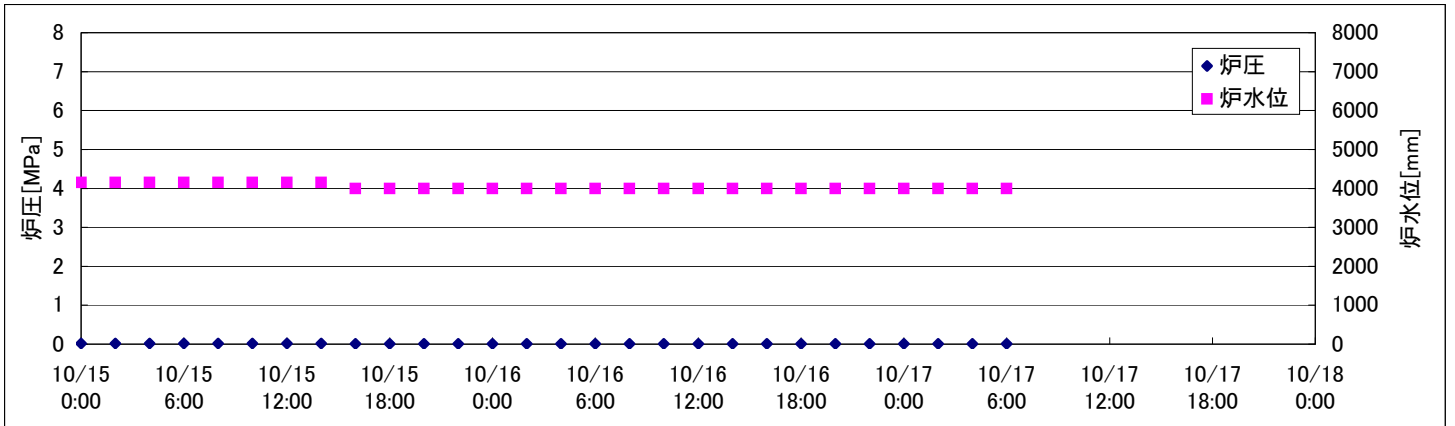
2F-1号機



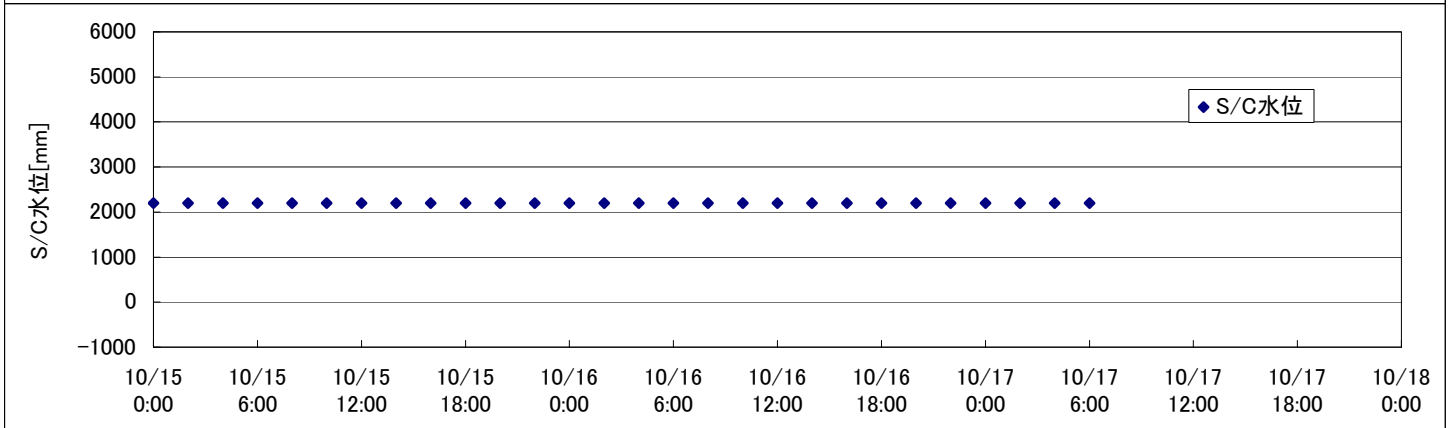
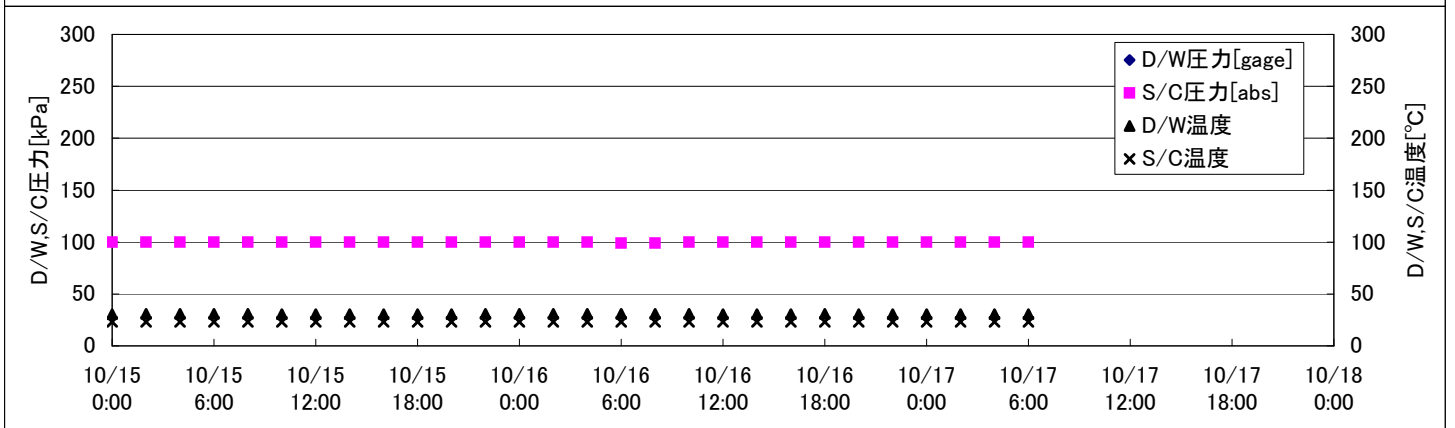
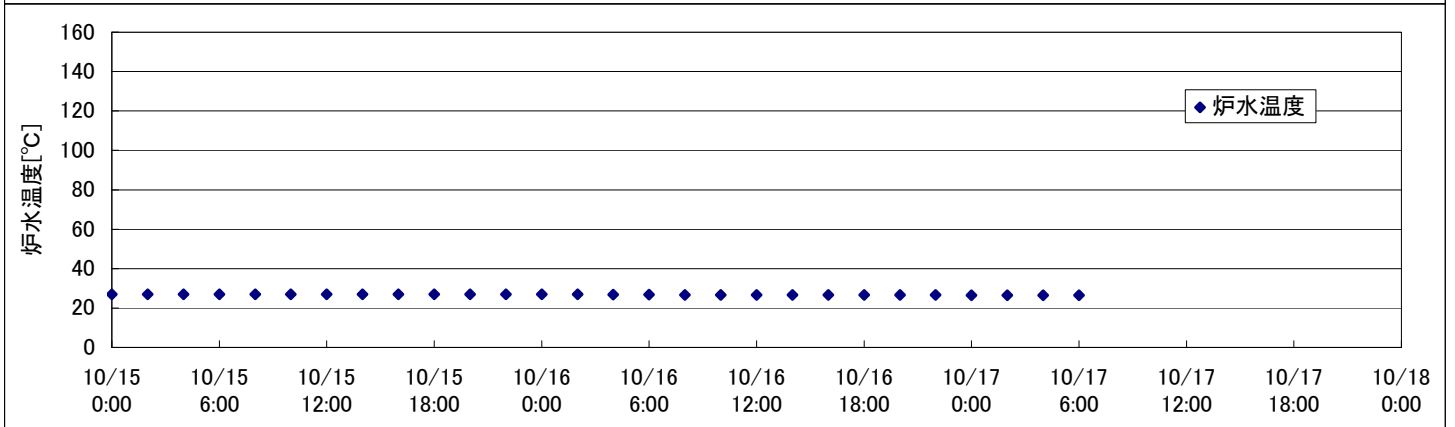
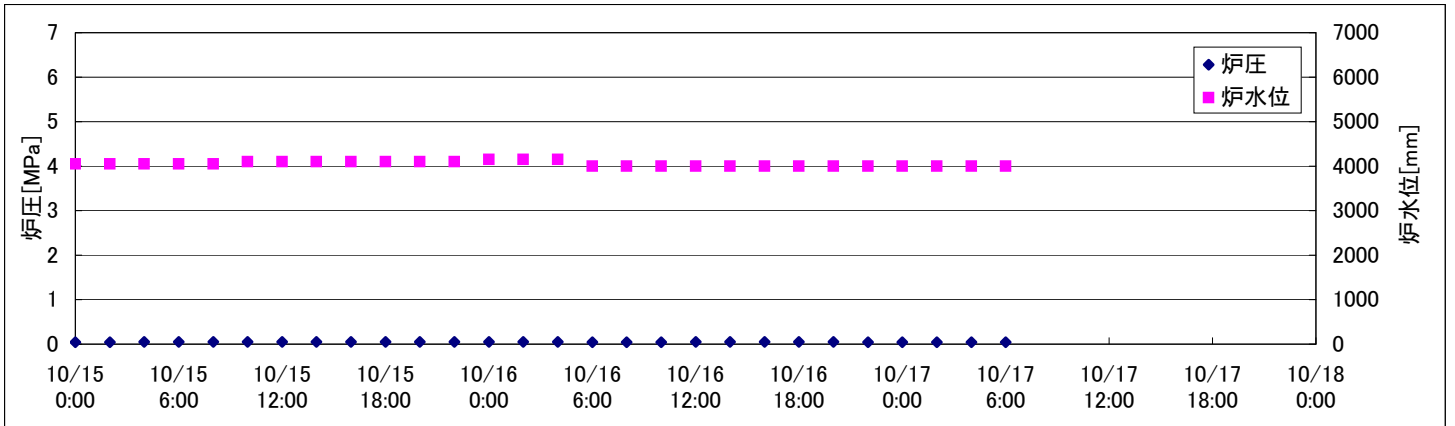
2F-2号機



2F-3号機



2F-4号機



2F-4号機

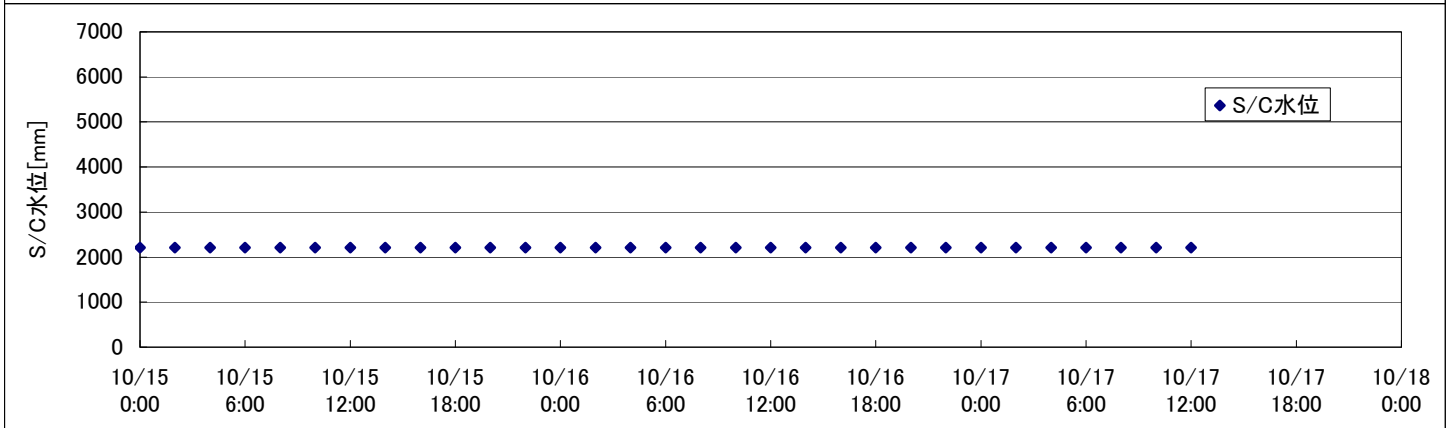
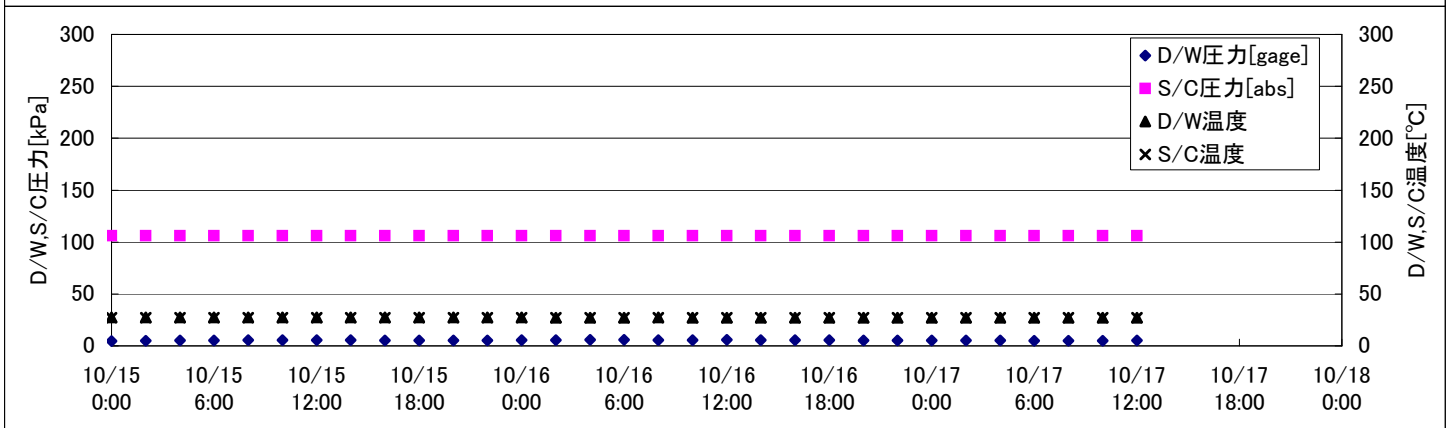
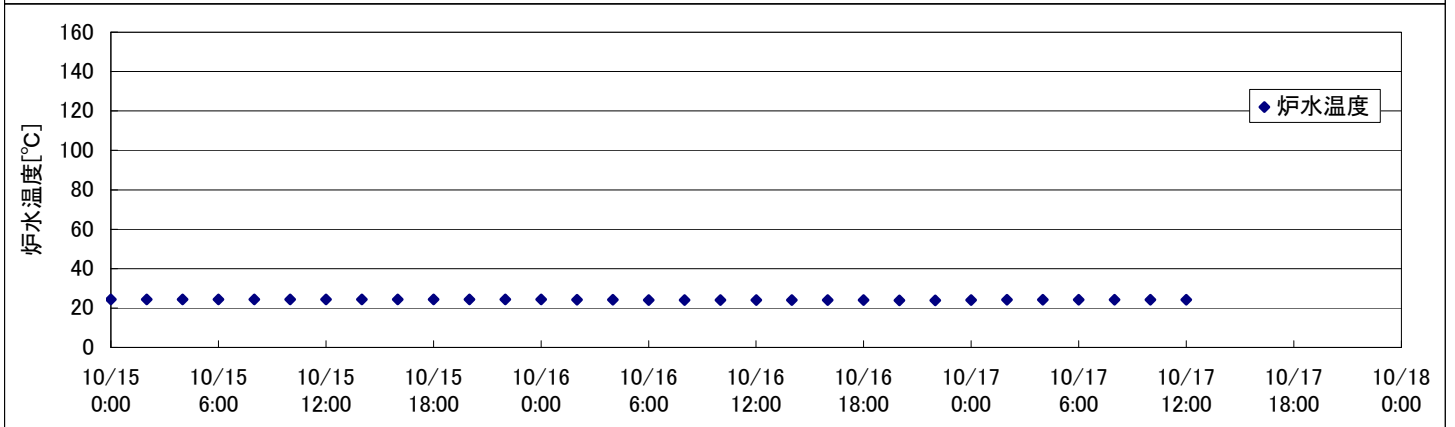
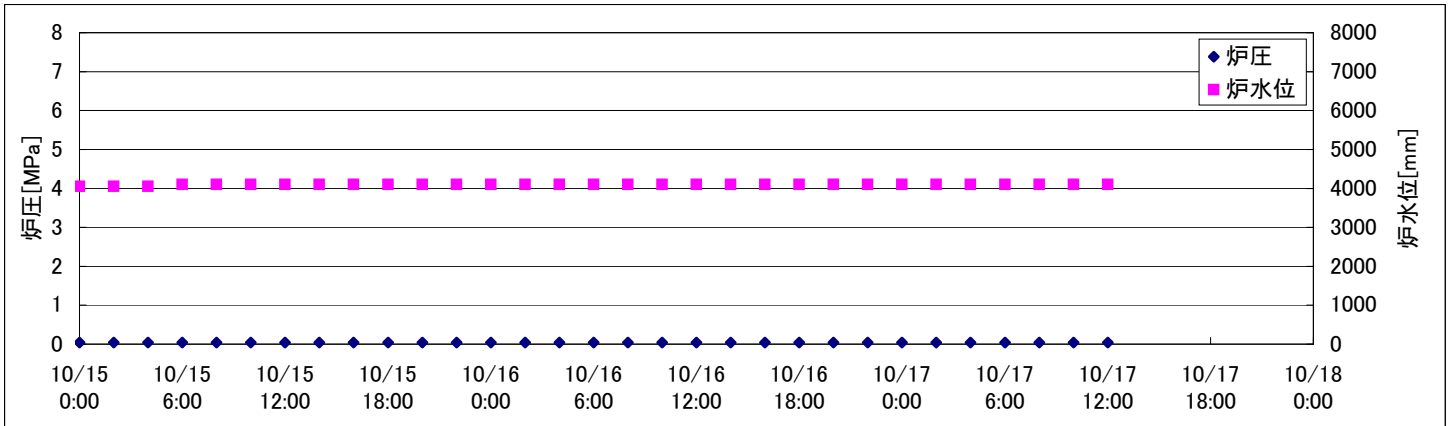
※燃料頂部(TAF)からの水位 = 炉水位 + 4200[mm]

時間	炉圧 [MPa (gage)]	炉水位 [mm] 停止時	炉水温度[°C]	D/W圧力 [kPa(gage)]	D/W温度 [°C]	S/C圧力 [kPa(abs)]	S/C水位 [mm]	S/C温度 [°C]
2011/10/15 0:00	0.04	4050	26.9		30.5	100	2200	23
2011/10/15 2:00	0.04	4050	27.0		30.7	100	2200	23
2011/10/15 4:00	0.05	4050	27.0		30.7	100	2200	23
2011/10/15 6:00	0.05	4050	27.0		30.7	100	2200	23
2011/10/15 8:00	0.05	4050	26.9		30.7	100	2200	23
2011/10/15 10:00	0.05	4100	26.9		30.6	100	2200	23
2011/10/15 12:00	0.05	4100	26.9		30.6	100	2200	23
2011/10/15 14:00	0.05	4100	27.0		30.6	100	2200	23
2011/10/15 16:00	0.05	4100	27.0		30.6	100	2200	23
2011/10/15 18:00	0.05	4100	26.9		30.6	100	2200	23
2011/10/15 20:00	0.05	4100	26.9		30.6	100	2200	23
2011/10/15 22:00	0.05	4100	26.9		30.7	100	2200	23
2011/10/16 0:00	0.05	4150	26.9		30.7	100	2200	23
2011/10/16 2:00	0.05	4150	26.9		30.7	100	2200	23
2011/10/16 4:00	0.05	4150	26.8		30.7	100	2200	23
2011/10/16 6:00	0.04	4000	26.8		30.7	99	2200	23
2011/10/16 8:00	0.04	4000	26.7		30.7	99	2200	23
2011/10/16 10:00	0.04	4000	26.7		30.7	100	2200	23
2011/10/16 12:00	0.05	4000	26.6		30.6	100	2200	23
2011/10/16 14:00	0.05	4000	26.6		30.5	100	2200	23
2011/10/16 16:00	0.05	4000	26.6		30.6	100	2200	23
2011/10/16 18:00	0.05	4000	26.7		30.7	100	2200	23
2011/10/16 20:00	0.05	4000	26.7		30.6	100	2200	23
2011/10/16 22:00	0.04	4000	26.6		30.6	100	2200	23
2011/10/17 0:00	0.04	4000	26.5		30.6	100	2200	23
2011/10/17 2:00	0.04	4000	26.5		30.6	100	2200	23
2011/10/17 4:00	0.04	4000	26.5		30.6	100	2200	23
2011/10/17 6:00	0.04	4000	26.5		30.6	100	2200	23
2011/10/17 8:00								
2011/10/17 10:00								
2011/10/17 12:00								
2011/10/17 14:00								
2011/10/17 16:00								
2011/10/17 18:00								
2011/10/17 20:00								
2011/10/17 22:00								
2011/10/18 0:00								

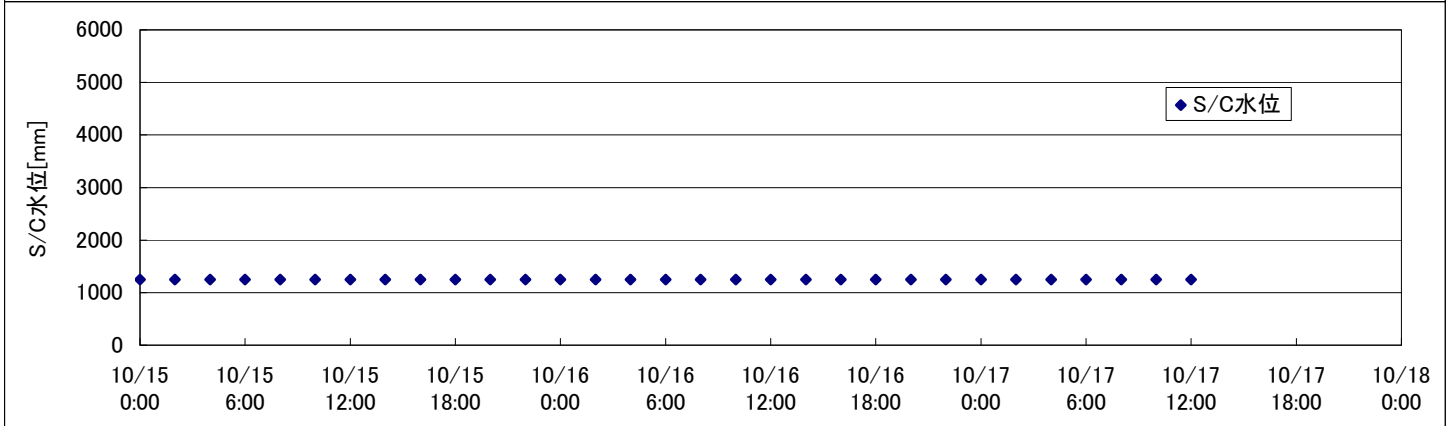
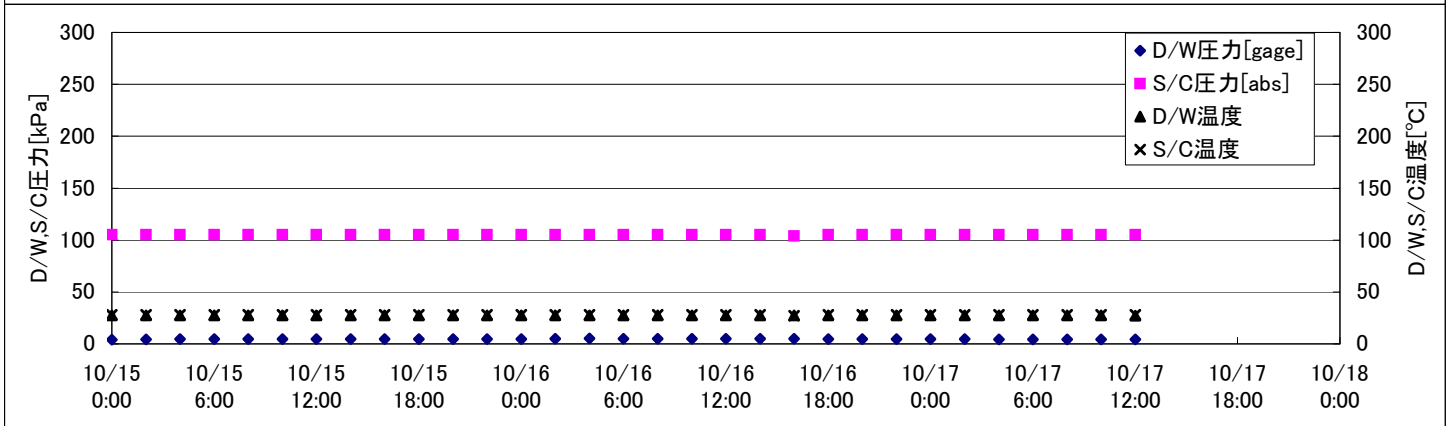
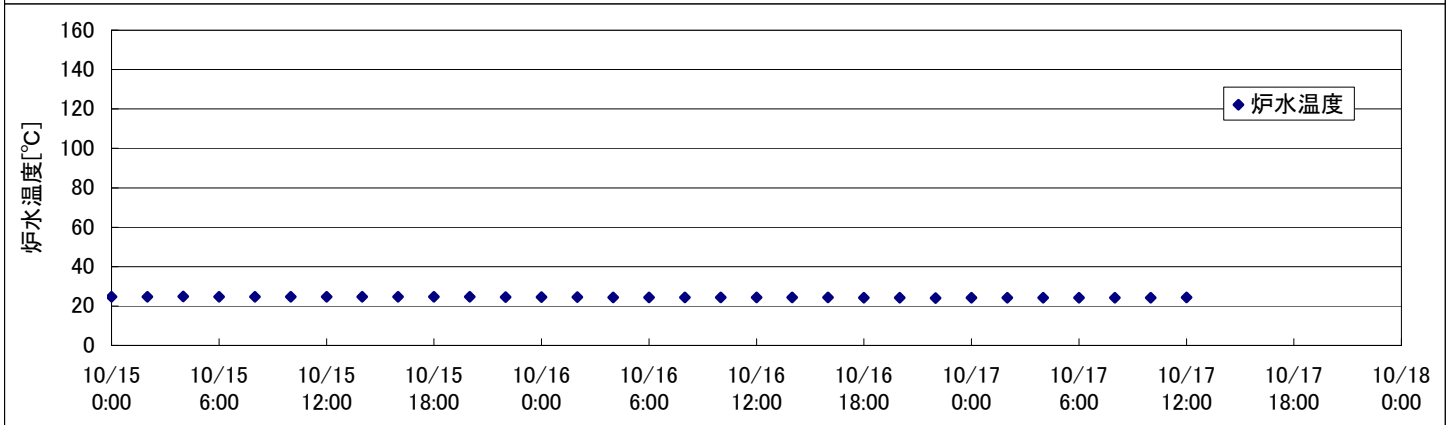
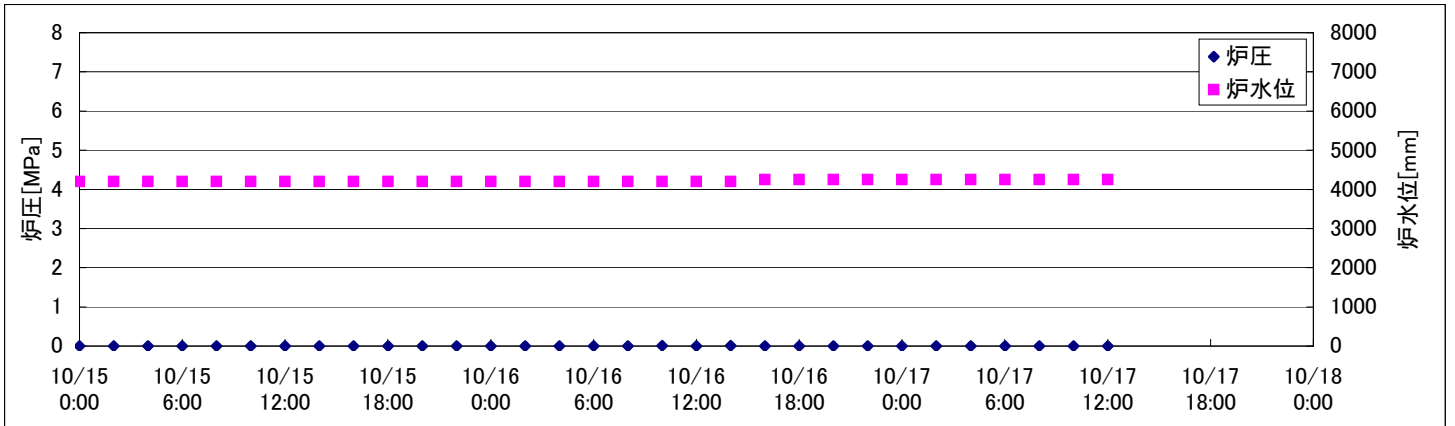
D/W圧力について

・パーソナルエアロックドア開放中であるため、9/6 10:00 より記載せず

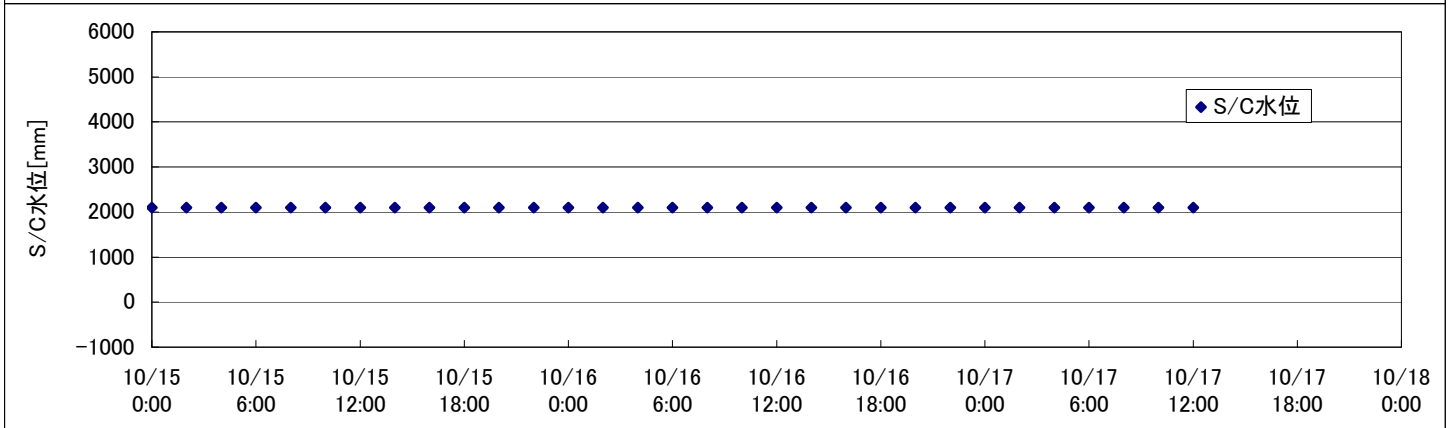
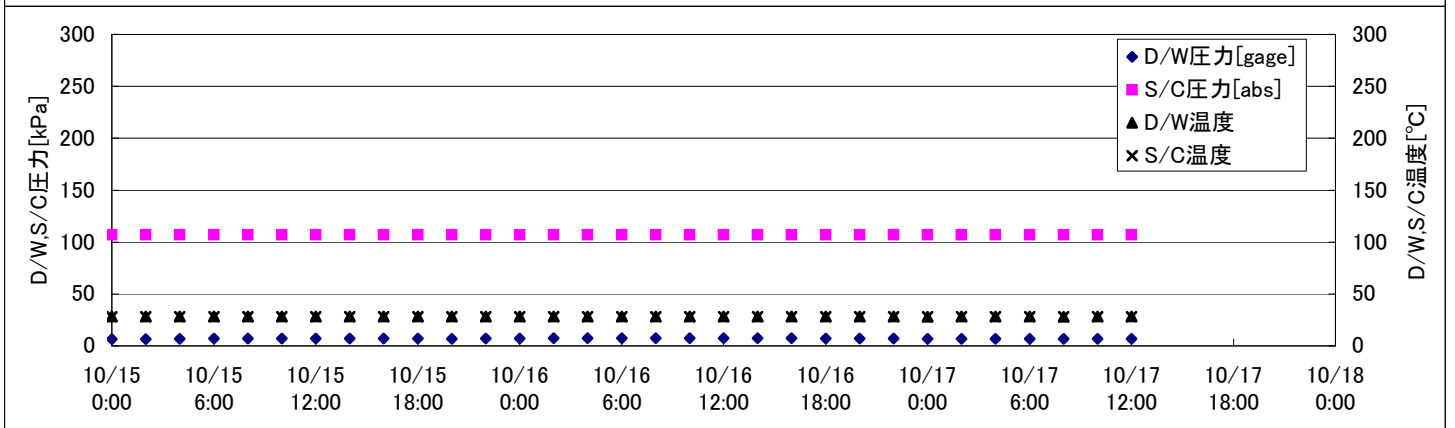
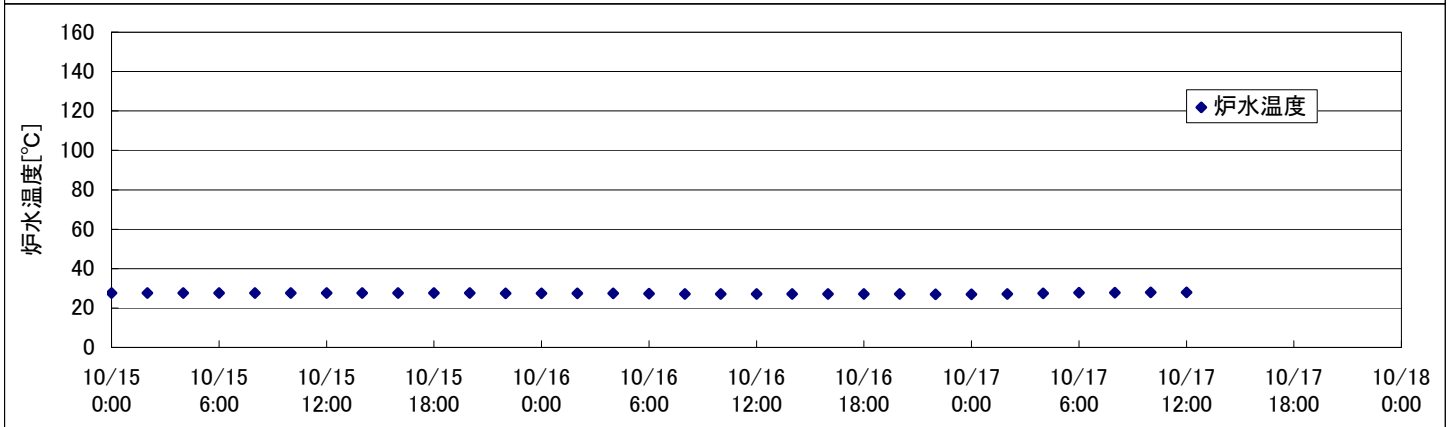
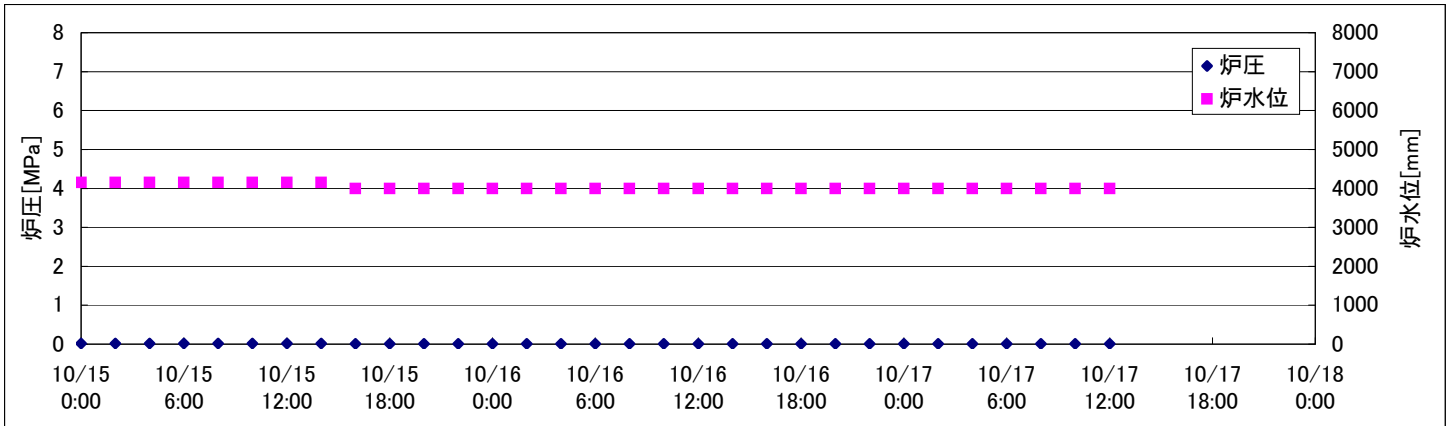
2F-1号機



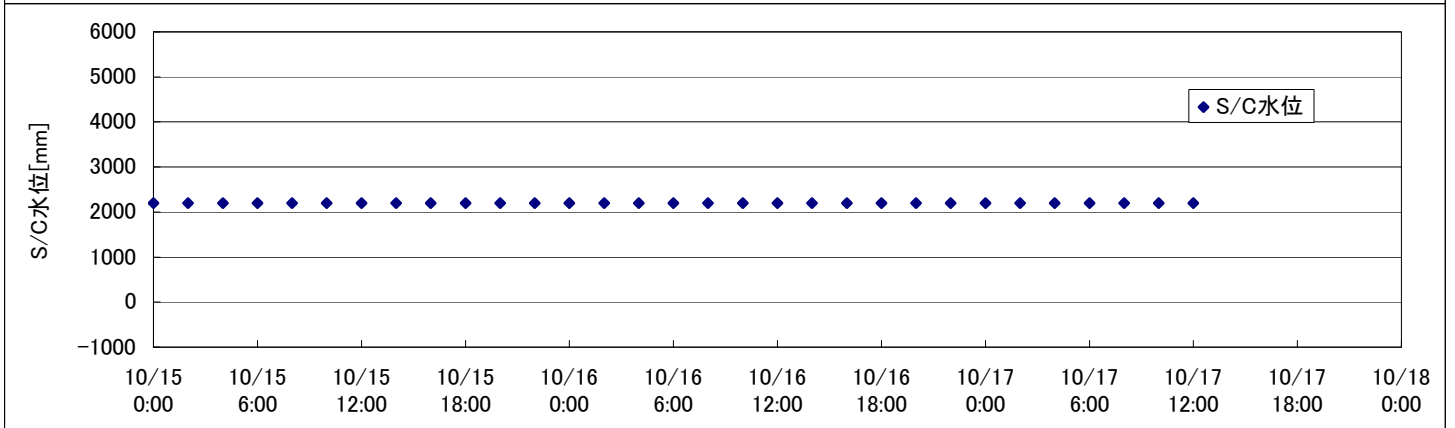
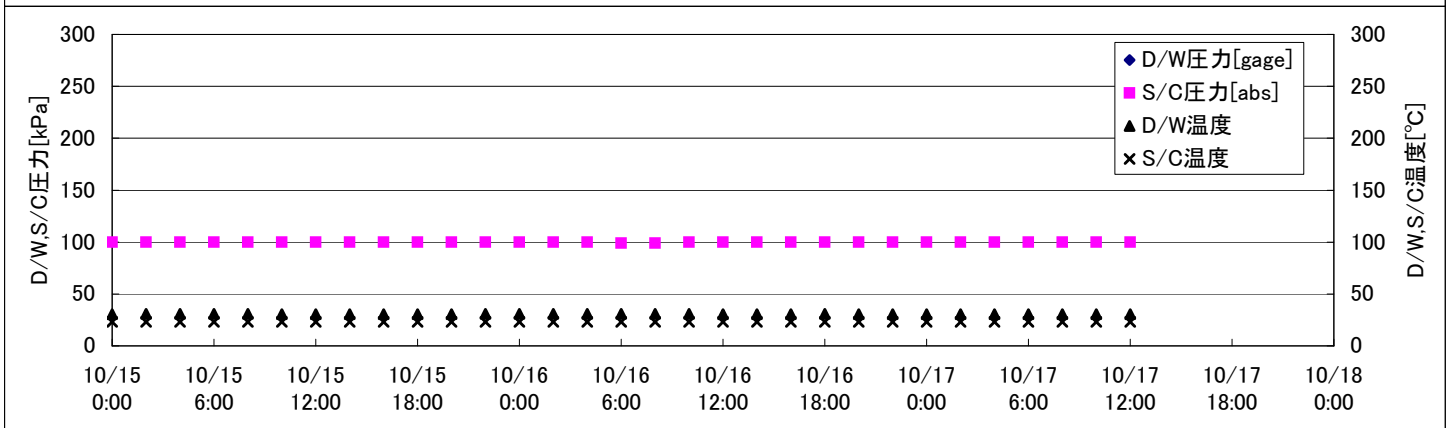
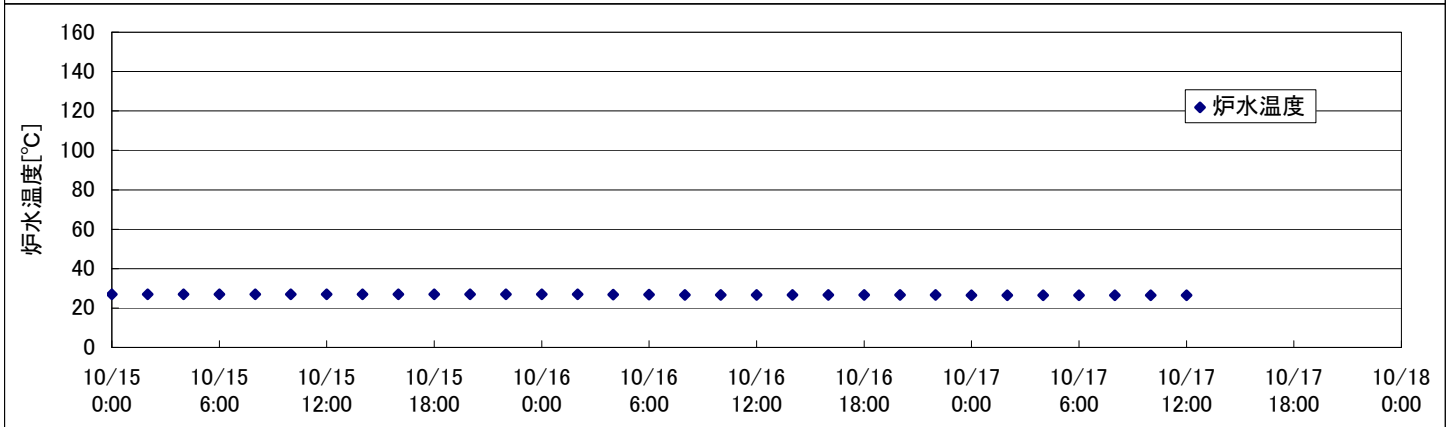
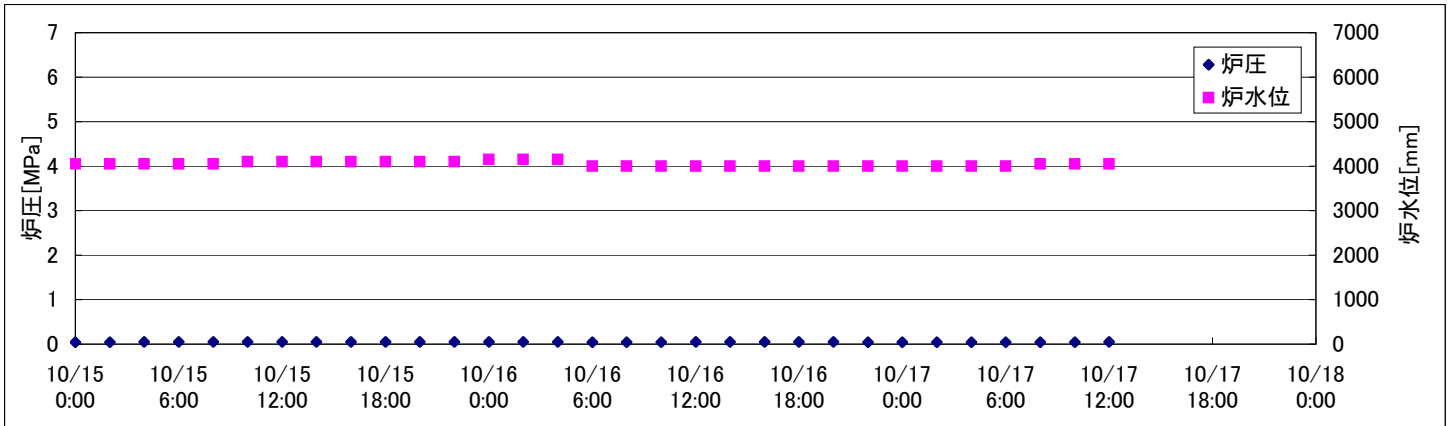
2F-2号機



2F-3号機



2F-4号機



2F-4号機

※燃料頂部(TAF)からの水位 = 炉水位 + 4200[mm]

時間	炉圧 [MPa (gage)]	炉水位 [mm] 停止時	炉水温度[°C]	D/W圧力 [kPa(gage)]	D/W温度 [°C]	S/C圧力 [kPa(abs)]	S/C水位 [mm]	S/C温度 [°C]
2011/10/15 0:00	0.04	4050	26.9		30.5	100	2200	23
2011/10/15 2:00	0.04	4050	27.0		30.7	100	2200	23
2011/10/15 4:00	0.05	4050	27.0		30.7	100	2200	23
2011/10/15 6:00	0.05	4050	27.0		30.7	100	2200	23
2011/10/15 8:00	0.05	4050	26.9		30.7	100	2200	23
2011/10/15 10:00	0.05	4100	26.9		30.6	100	2200	23
2011/10/15 12:00	0.05	4100	26.9		30.6	100	2200	23
2011/10/15 14:00	0.05	4100	27.0		30.6	100	2200	23
2011/10/15 16:00	0.05	4100	27.0		30.6	100	2200	23
2011/10/15 18:00	0.05	4100	26.9		30.6	100	2200	23
2011/10/15 20:00	0.05	4100	26.9		30.6	100	2200	23
2011/10/15 22:00	0.05	4100	26.9		30.7	100	2200	23
2011/10/16 0:00	0.05	4150	26.9		30.7	100	2200	23
2011/10/16 2:00	0.05	4150	26.9		30.7	100	2200	23
2011/10/16 4:00	0.05	4150	26.8		30.7	100	2200	23
2011/10/16 6:00	0.04	4000	26.8		30.7	99	2200	23
2011/10/16 8:00	0.04	4000	26.7		30.7	99	2200	23
2011/10/16 10:00	0.04	4000	26.7		30.7	100	2200	23
2011/10/16 12:00	0.05	4000	26.6		30.6	100	2200	23
2011/10/16 14:00	0.05	4000	26.6		30.5	100	2200	23
2011/10/16 16:00	0.05	4000	26.6		30.6	100	2200	23
2011/10/16 18:00	0.05	4000	26.7		30.7	100	2200	23
2011/10/16 20:00	0.05	4000	26.7		30.6	100	2200	23
2011/10/16 22:00	0.04	4000	26.6		30.6	100	2200	23
2011/10/17 0:00	0.04	4000	26.5		30.6	100	2200	23
2011/10/17 2:00	0.04	4000	26.5		30.6	100	2200	23
2011/10/17 4:00	0.04	4000	26.5		30.6	100	2200	23
2011/10/17 6:00	0.04	4000	26.5		30.6	100	2200	23
2011/10/17 8:00	0.04	4050	26.5		30.6	100	2200	23
2011/10/17 10:00	0.04	4050	26.5		30.6	100	2200	23
2011/10/17 12:00	0.05	4050	26.5		30.6	100	2200	23
2011/10/17 14:00								
2011/10/17 16:00								
2011/10/17 18:00								
2011/10/17 20:00								
2011/10/17 22:00								
2011/10/18 0:00								

D/W圧力について

・パーソナルエアロックドア開放中であるため、9/6 10:00 より記載せず