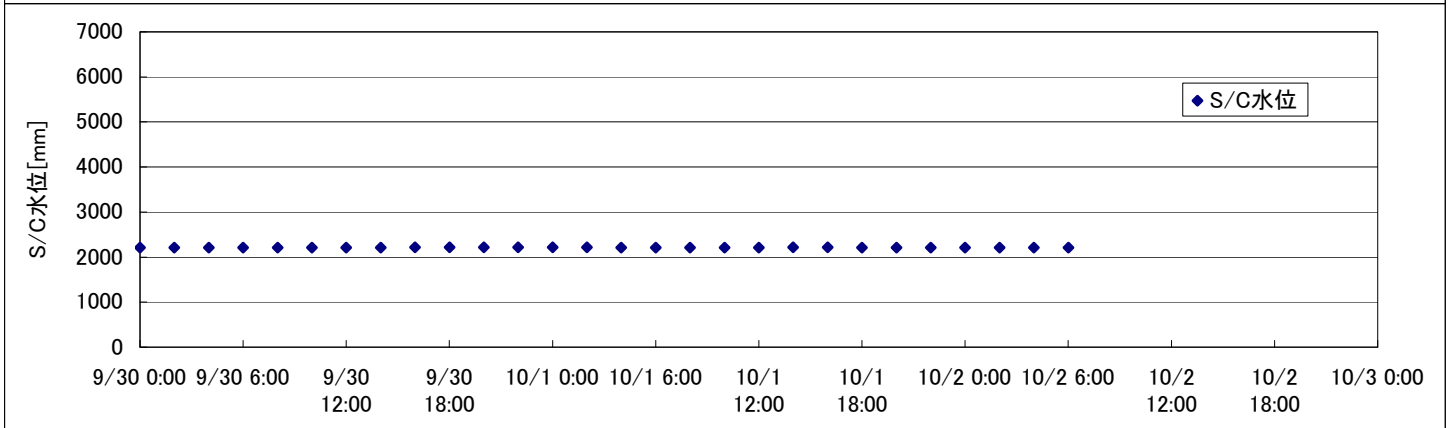
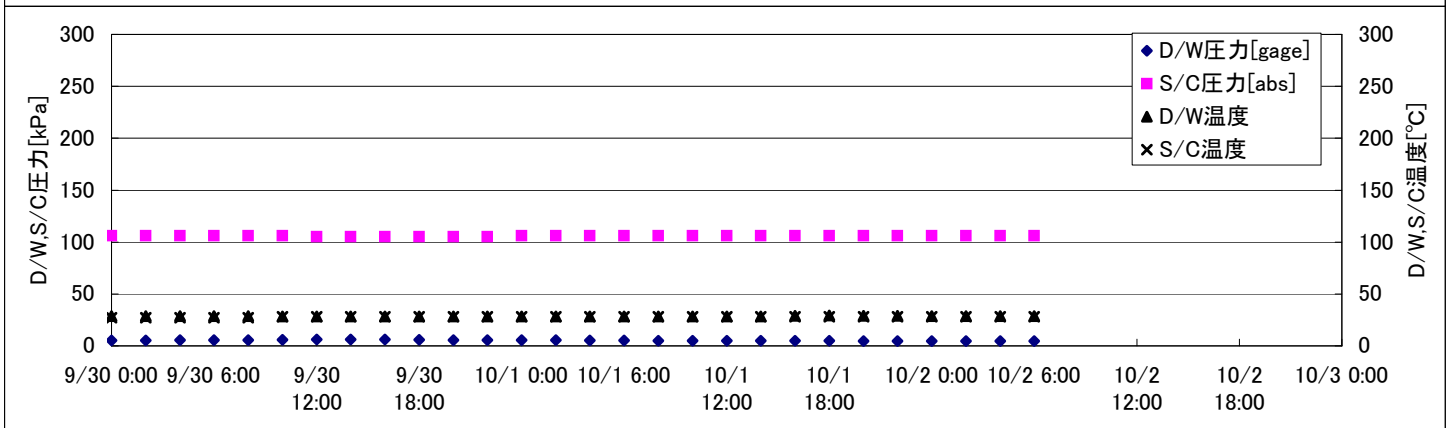
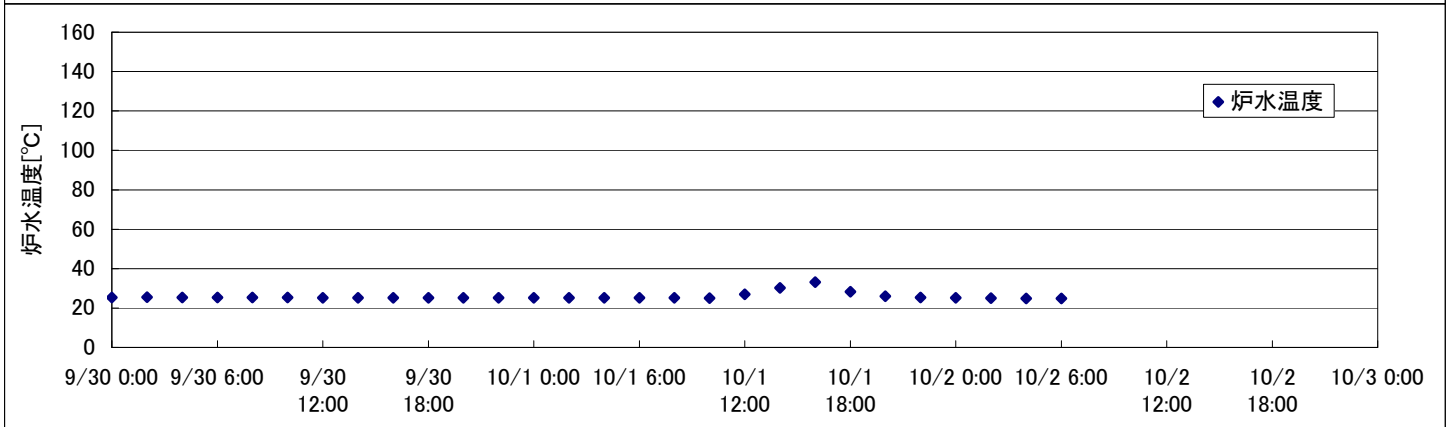
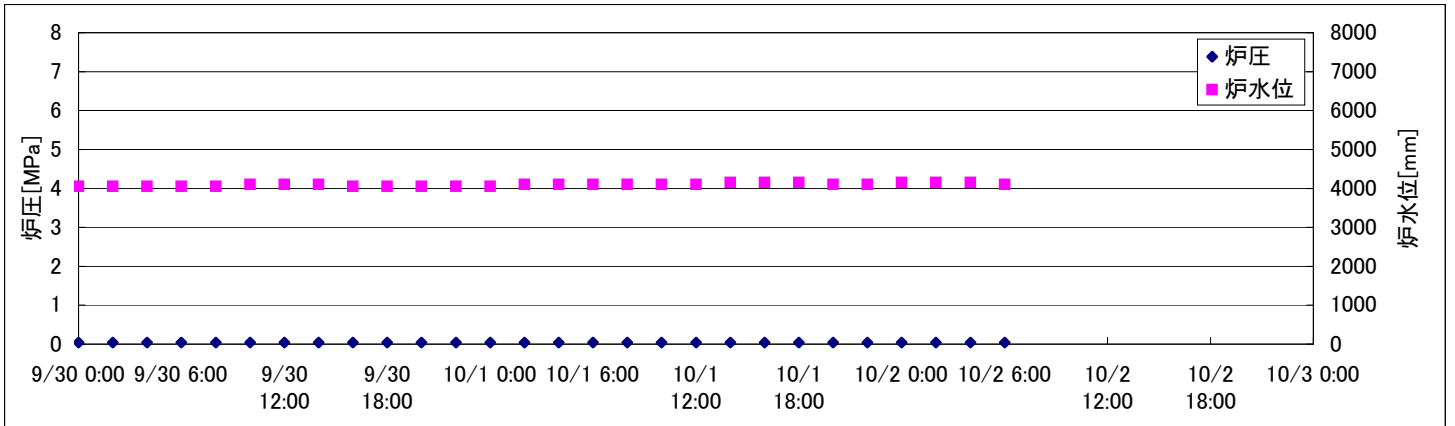
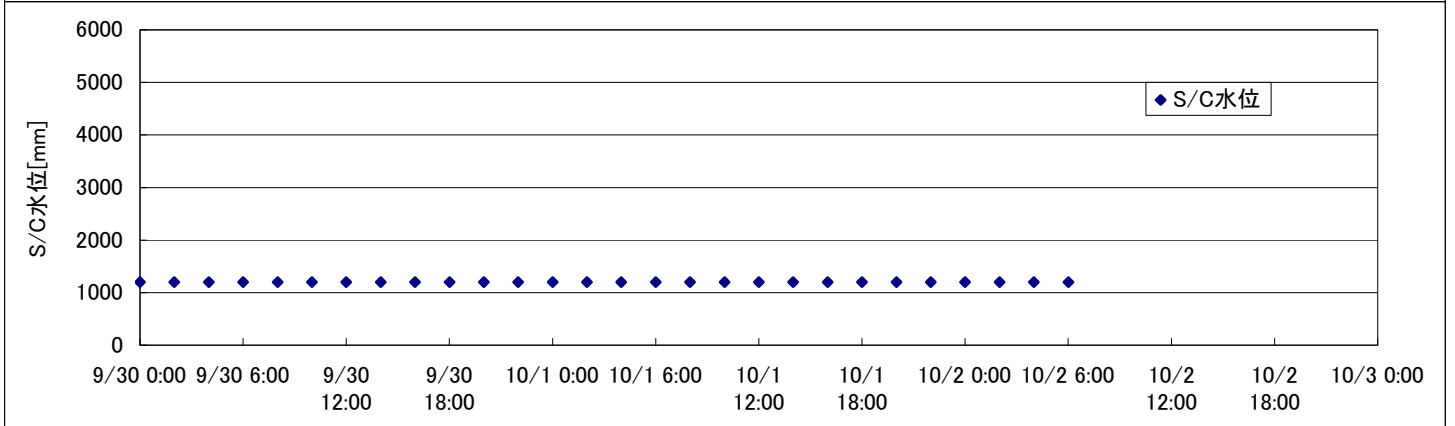
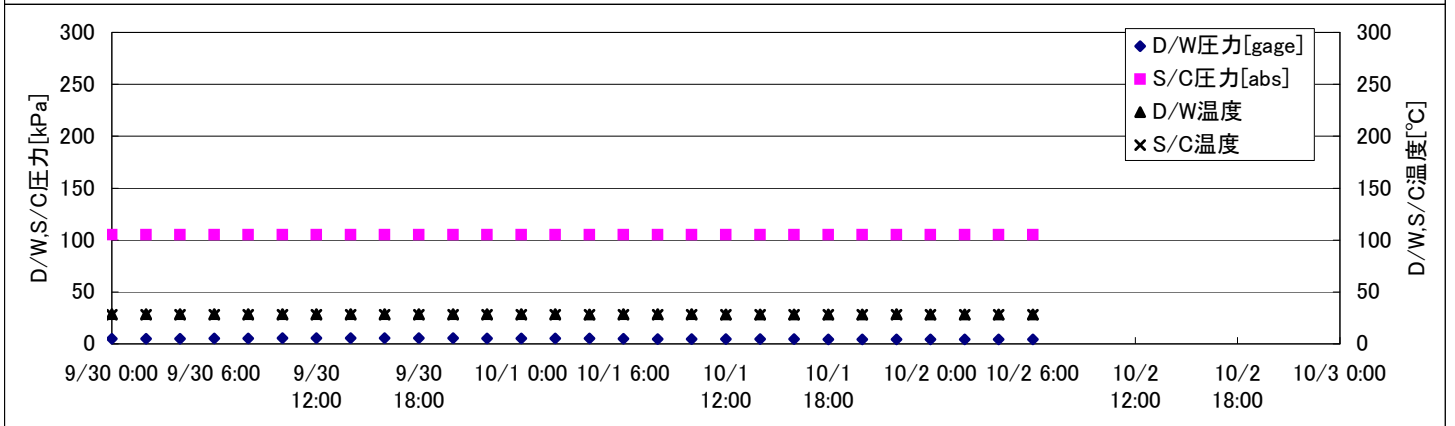
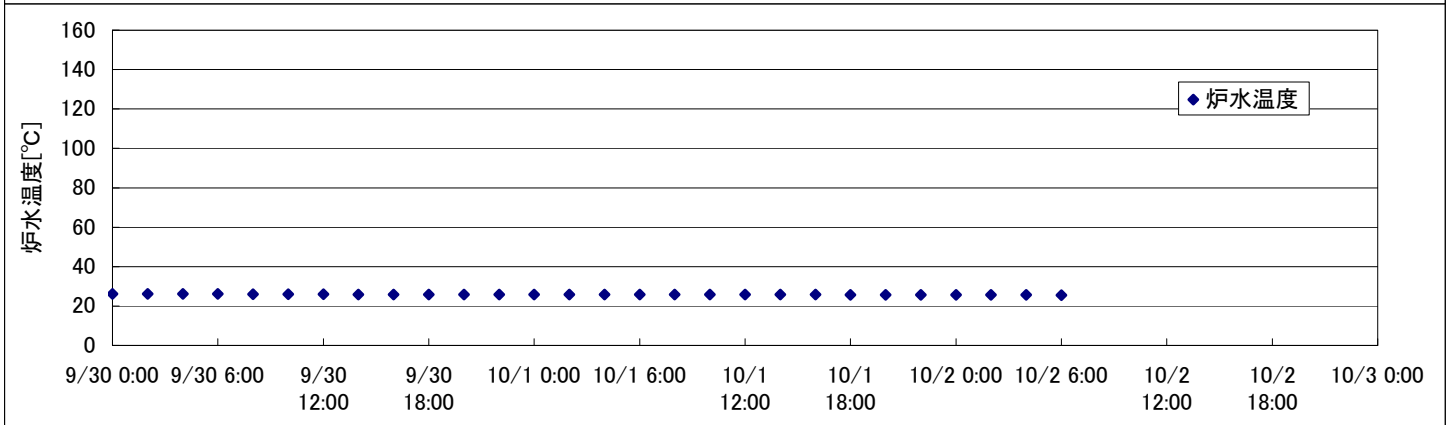
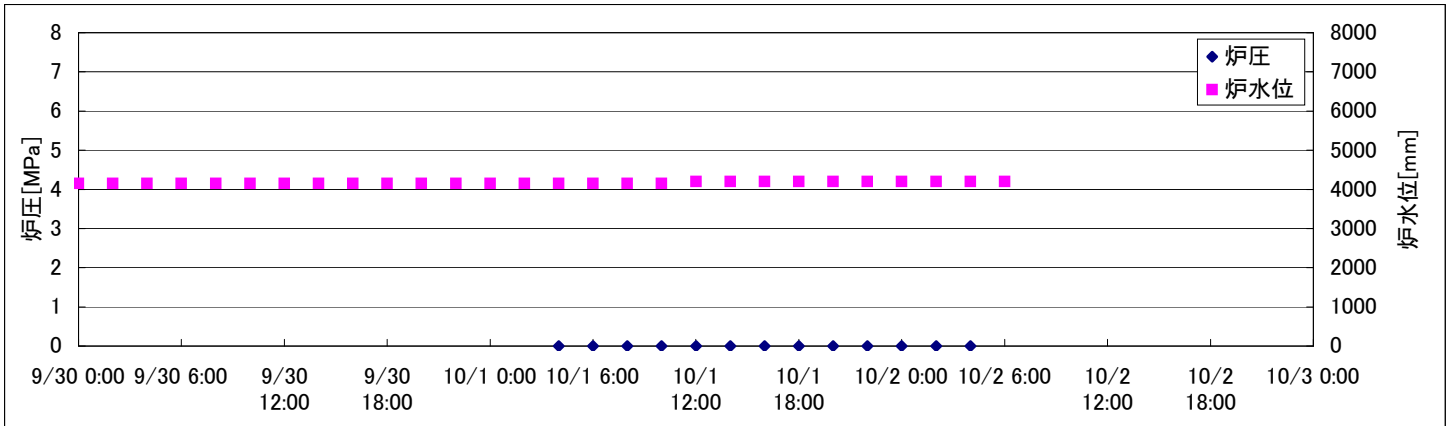


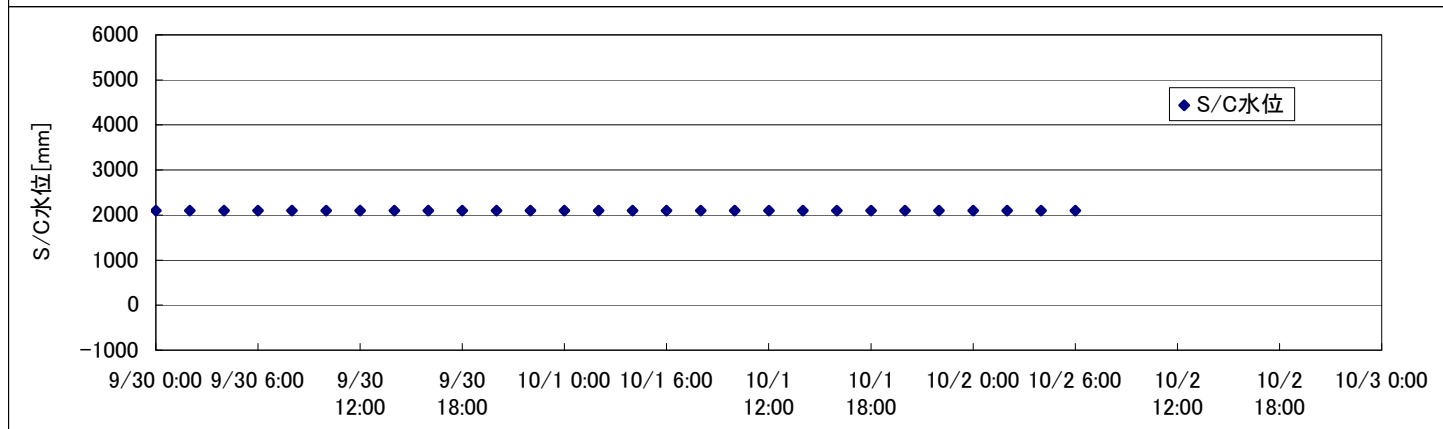
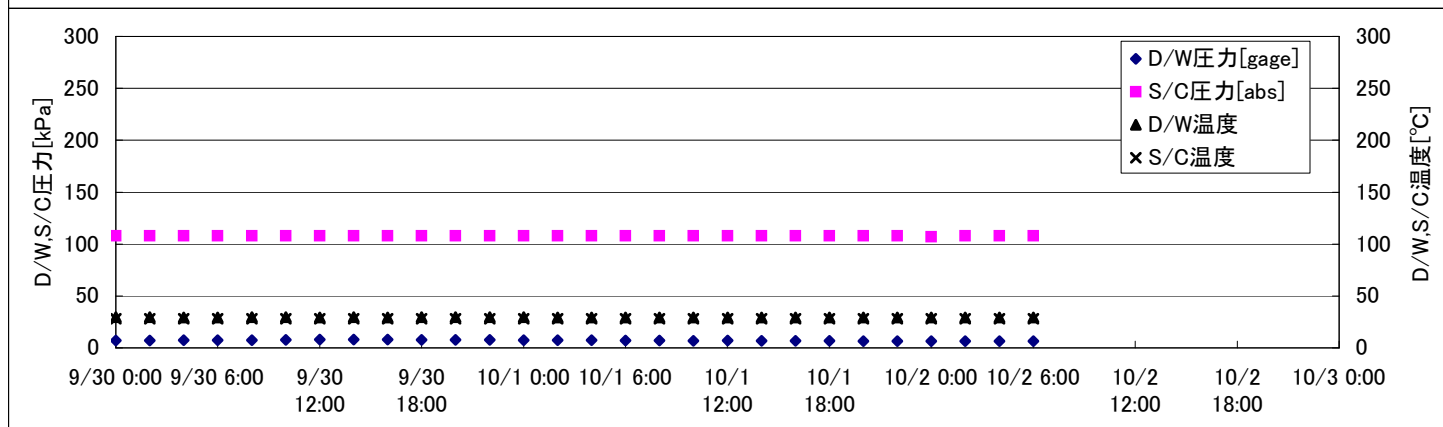
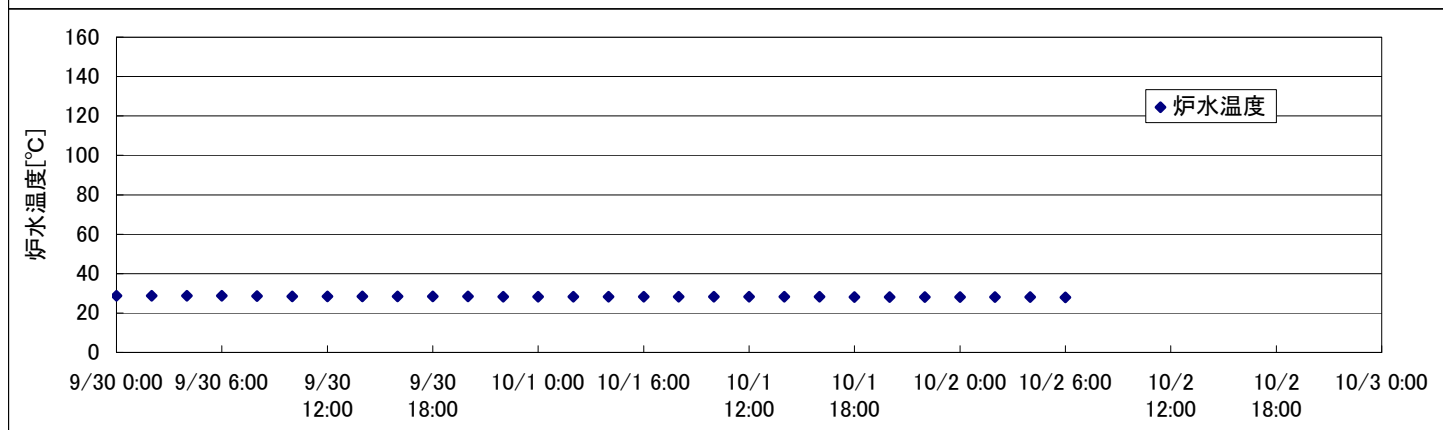
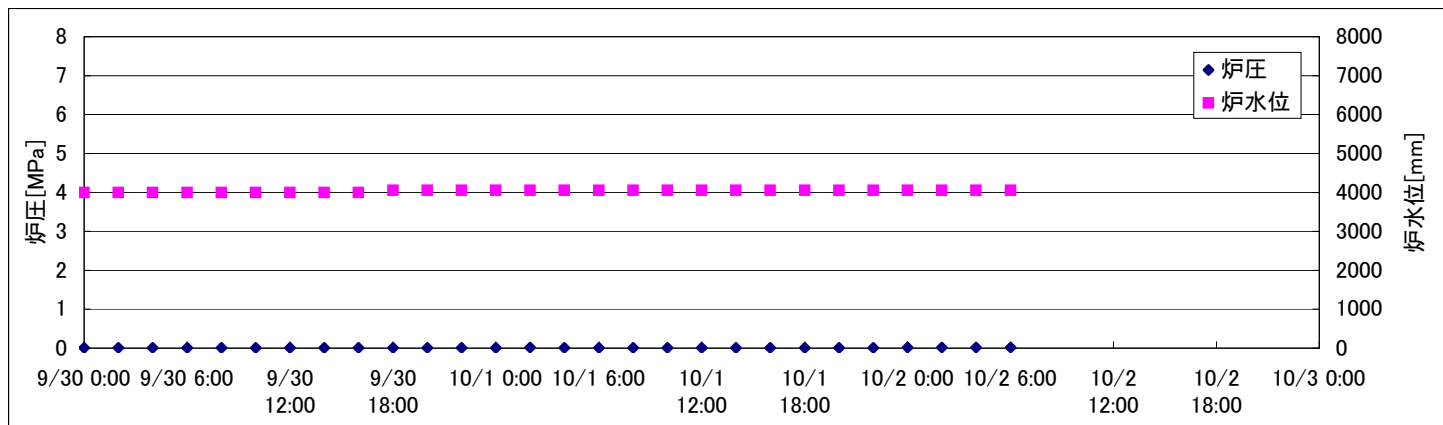
2F-1号機



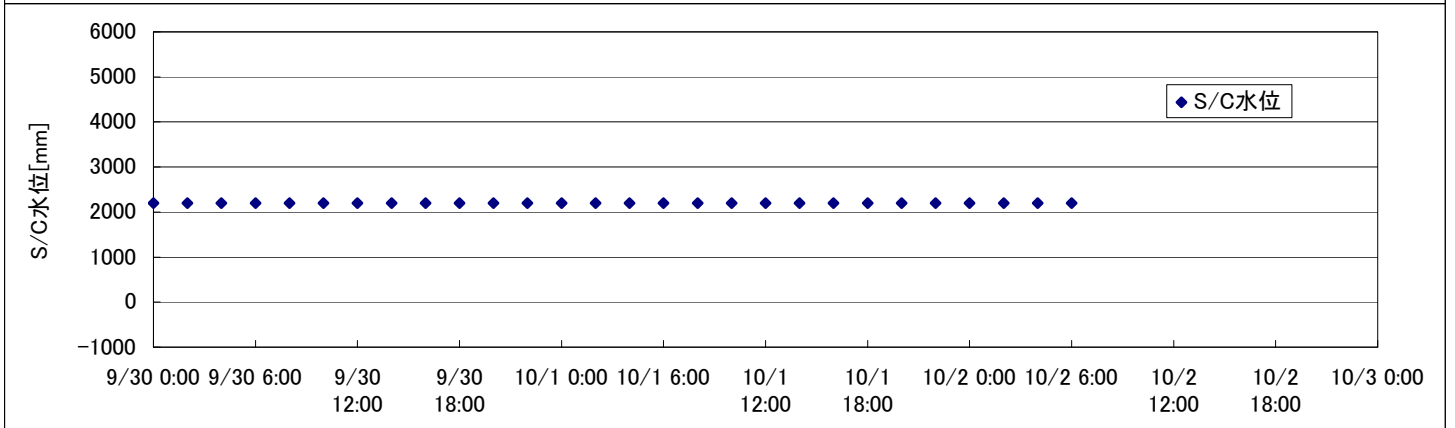
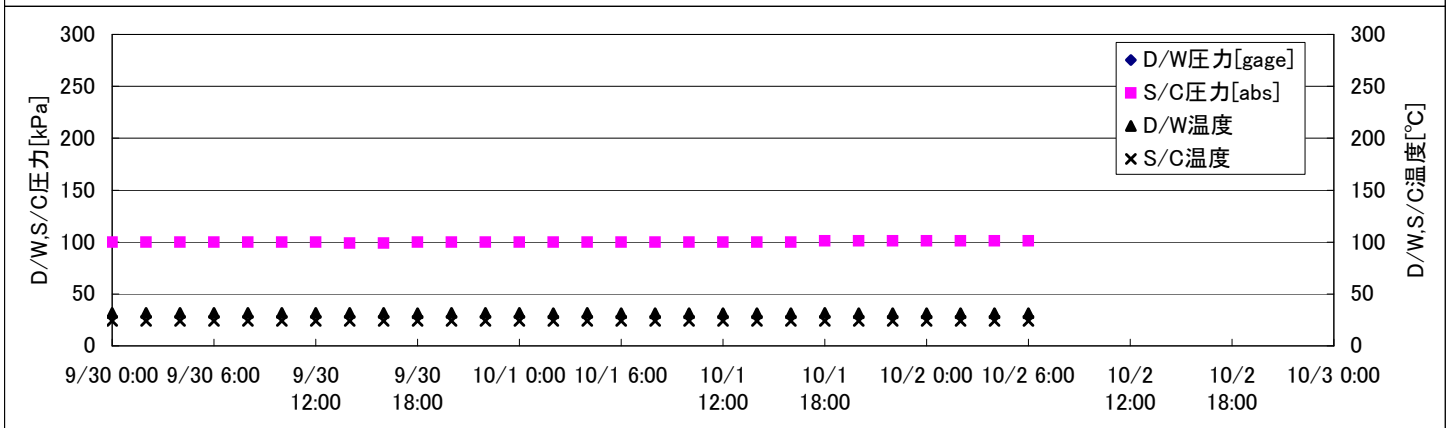
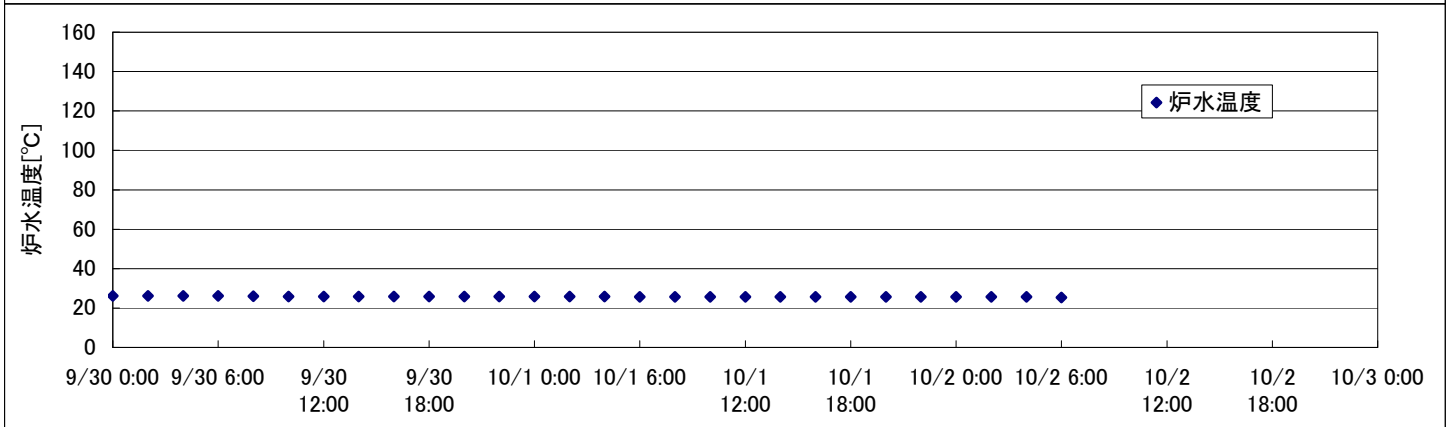
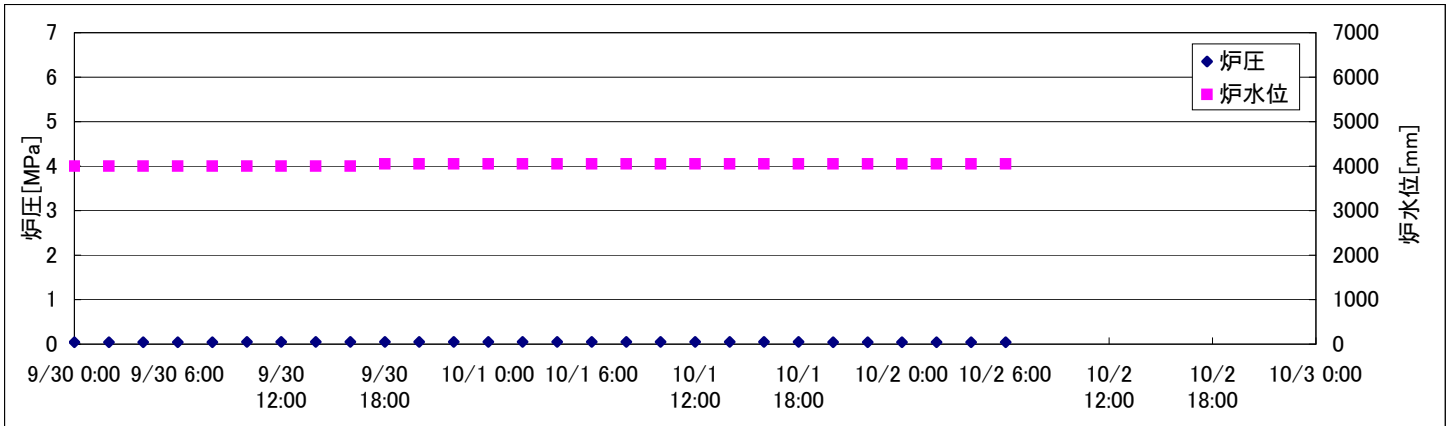
2F-2号機



2F-3号機



2F-4号機



2F-1号機

※燃料頂部(TAF)からの水位=炉水位+4200[mm]

時間	炉圧 [MPa (gage)]	炉水位 [mm] 停止時	炉水温度[°C]	D/W圧力 [kPa(gage)]	D/W温度 [°C]	S/C圧力 [kPa(abs)]	S/C水位 [mm]	S/C温度 [°C]
2011/9/30 0:00	0.04	4050	25.4	5	28.6	106	2212	27
2011/9/30 2:00	0.04	4050	25.5	5	28.7	106	2212	27
2011/9/30 4:00	0.04	4050	25.4	5	28.6	106	2212	27
2011/9/30 6:00	0.04	4050	25.4	6	28.6	106	2212	27
2011/9/30 8:00	0.04	4050	25.3	6	28.6	106	2212	27
2011/9/30 10:00	0.04	4100	25.3	6	28.5	106	2213	28
2011/9/30 12:00	0.04	4100	25.2	6	28.5	105	2213	28
2011/9/30 14:00	0.04	4100	25.2	6	28.4	105	2213	28
2011/9/30 16:00	0.04	4050	25.2	6	28.4	105	2214	28
2011/9/30 18:00	0.04	4050	25.1	6	28.5	105	2214	28
2011/9/30 20:00	0.04	4050	25.1	6	28.4	105	2214	28
2011/9/30 22:00	0.04	4050	25.1	6	28.4	105	2214	28
2011/10/1 0:00	0.04	4050	25.1	6	28.4	106	2214	28
2011/10/1 2:00	0.04	4100	25.1	5	28.4	106	2214	28
2011/10/1 4:00	0.04	4100	25.1	5	28.4	106	2213	28
2011/10/1 6:00	0.04	4100	25.1	5	28.4	106	2213	28
2011/10/1 8:00	0.04	4100	25.1	5	28.4	106	2213	28
2011/10/1 10:00	0.04	4100	25.0	5	28.4	106	2213	28
2011/10/1 12:00	0.04	4100	27.0	5	28.4	106	2213	28
2011/10/1 14:00	0.04	4150	30.2	5	28.4	106	2214	28
2011/10/1 16:00	0.04	4150	33.2	5	29.1	106	2214	28
2011/10/1 18:00	0.04	4150	28.3	5	29.4	106	2213	28
2011/10/1 20:00	0.04	4100	26.0	5	29.1	106	2212	28
2011/10/1 22:00	0.04	4100	25.4	5	28.9	106	2212	28
2011/10/2 0:00	0.04	4150	25.1	5	28.8	106	2212	28
2011/10/2 2:00	0.04	4150	25.0	5	28.7	106	2211	28
2011/10/2 4:00	0.04	4150	24.9	5	28.7	106	2212	28
2011/10/2 6:00	0.04	4100	24.8	5	28.7	106	2211	28
2011/10/2 8:00								
2011/10/2 10:00								
2011/10/2 12:00								
2011/10/2 14:00								
2011/10/2 16:00								
2011/10/2 18:00								
2011/10/2 20:00								
2011/10/2 22:00								
2011/10/3 0:00								

RHRCポンプ(B)の点検作業のため
 ・10/1 9:58 RHR B系停止
 ・10/1 16:21 RHR B系起動

2F-4号機

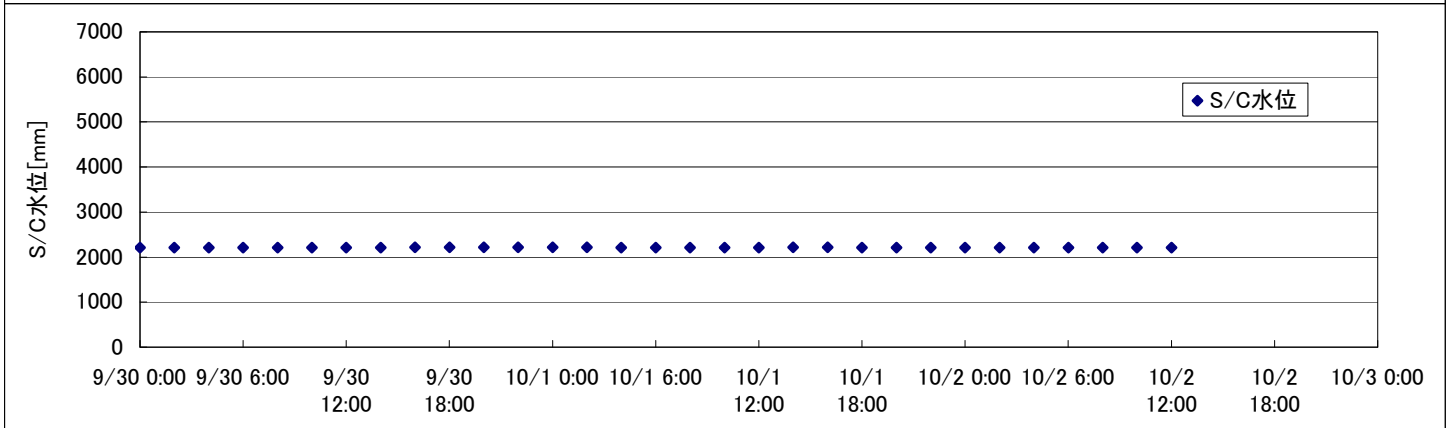
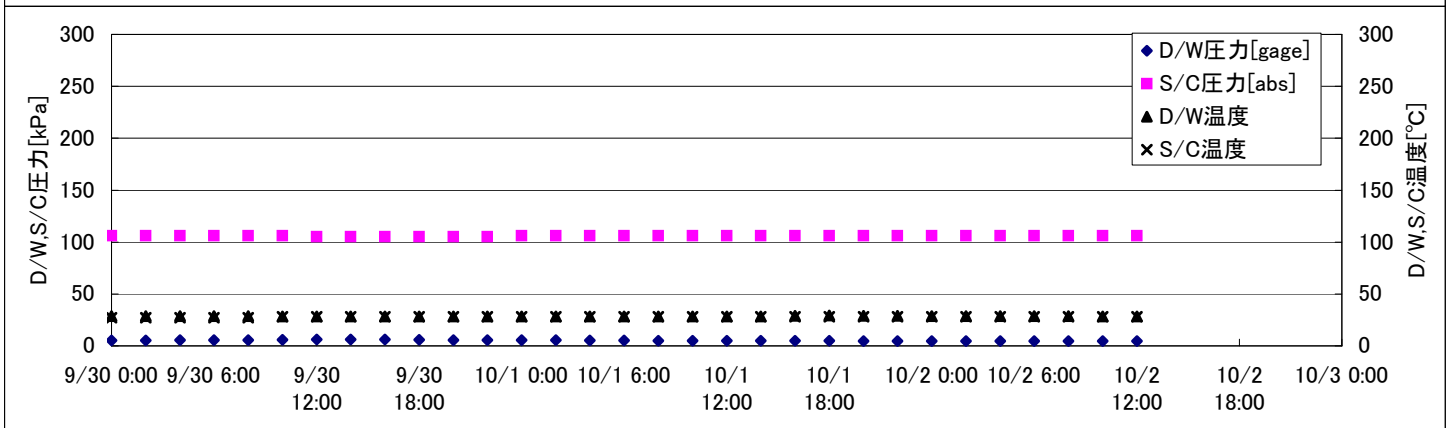
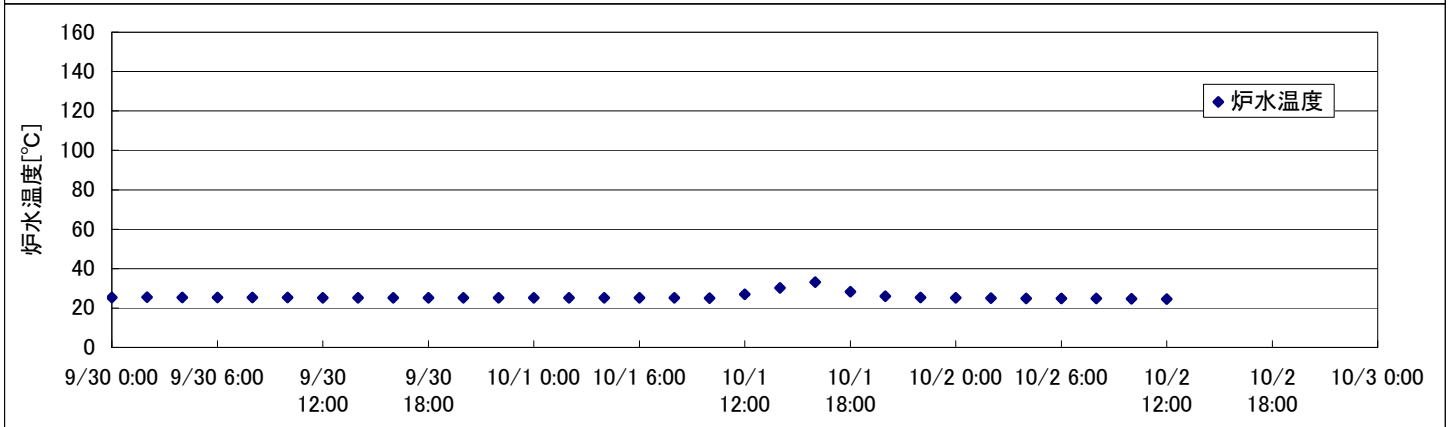
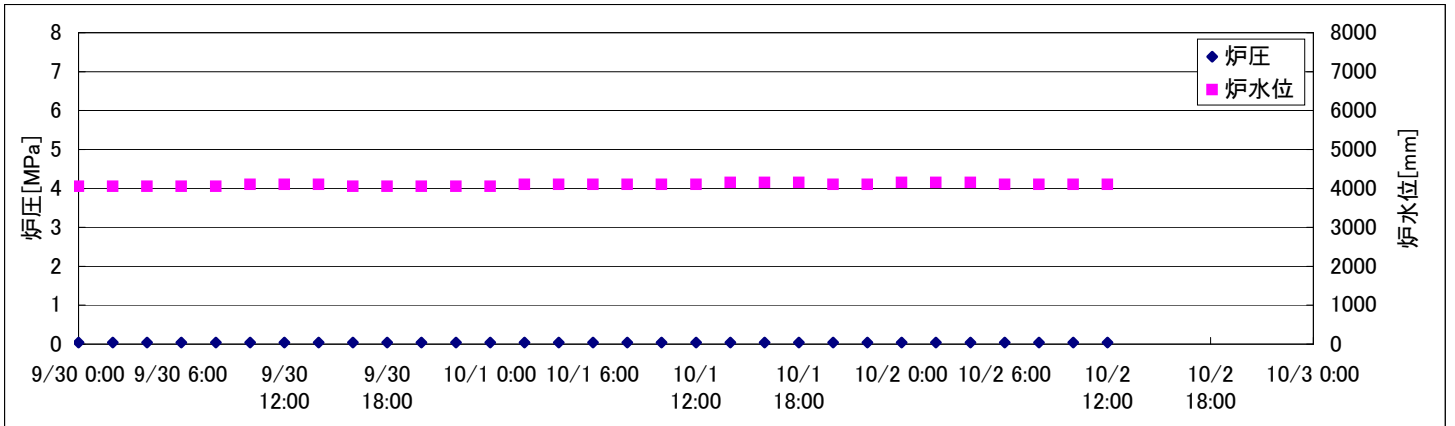
※燃料頂部(TAF)からの水位=炉水位+4200[mm]

時間	炉圧 [MPa (gage)]	炉水位 [mm] 停止時	炉水温度[°C]	D/W圧力 [kPa(gage)]	D/W温度 [°C]	S/C圧力 [kPa(abs)]	S/C水位 [mm]	S/C温度 [°C]
2011/9/30 0:00	0.04	4000	26.1		31.8	100	2200	24
2011/9/30 2:00	0.04	4000	26.1		31.8	100	2200	24
2011/9/30 4:00	0.04	4000	26.1		31.8	100	2200	24
2011/9/30 6:00	0.04	4000	26.1		31.8	100	2200	24
2011/9/30 8:00	0.04	4000	26.0		31.8	100	2200	24
2011/9/30 10:00	0.05	4000	25.9		31.8	100	2200	24
2011/9/30 12:00	0.05	4000	25.9		31.8	100	2200	24
2011/9/30 14:00	0.05	4000	25.9		31.8	99	2200	24
2011/9/30 16:00	0.05	4000	25.9		31.8	99	2200	24
2011/9/30 18:00	0.05	4050	25.8		31.6	100	2200	24
2011/9/30 20:00	0.05	4050	25.8		31.7	100	2200	24
2011/9/30 22:00	0.05	4050	25.8		31.7	100	2200	24
2011/10/1 0:00	0.05	4050	25.8		31.8	100	2200	24
2011/10/1 2:00	0.05	4050	25.8		31.6	100	2200	24
2011/10/1 4:00	0.05	4050	25.8		31.7	100	2200	24
2011/10/1 6:00	0.05	4050	25.7		31.6	100	2200	24
2011/10/1 8:00	0.05	4050	25.7		31.4	100	2200	24
2011/10/1 10:00	0.05	4050	25.7		31.6	100	2200	24
2011/10/1 12:00	0.05	4050	25.7		31.6	100	2200	24
2011/10/1 14:00	0.05	4050	25.7		31.6	100	2200	24
2011/10/1 16:00	0.05	4050	25.7		31.6	100	2200	24
2011/10/1 18:00	0.05	4050	25.7		31.7	101	2200	24
2011/10/1 20:00	0.04	4050	25.7		31.6	101	2200	24
2011/10/1 22:00	0.04	4050	25.7		31.6	101	2200	24
2011/10/2 0:00	0.04	4050	25.7		31.6	101	2200	24
2011/10/2 2:00	0.04	4050	25.6		31.6	101	2200	24
2011/10/2 4:00	0.04	4050	25.6		31.6	101	2200	24
2011/10/2 6:00	0.04	4050	25.4		31.6	101	2200	24
2011/10/2 8:00								
2011/10/2 10:00								
2011/10/2 12:00								
2011/10/2 14:00								
2011/10/2 16:00								
2011/10/2 18:00								
2011/10/2 20:00								
2011/10/2 22:00								
2011/10/3 0:00								

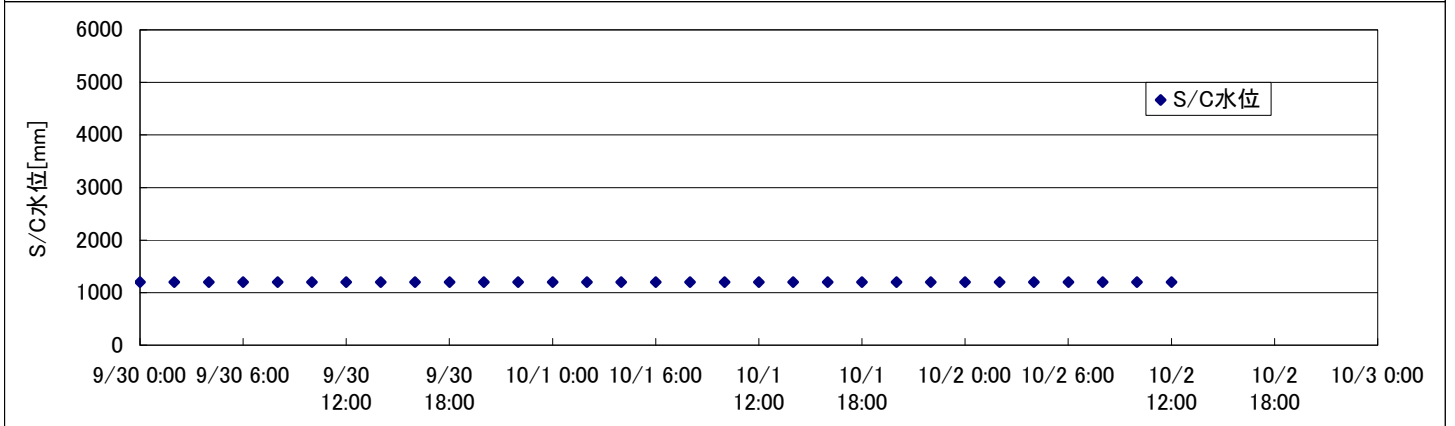
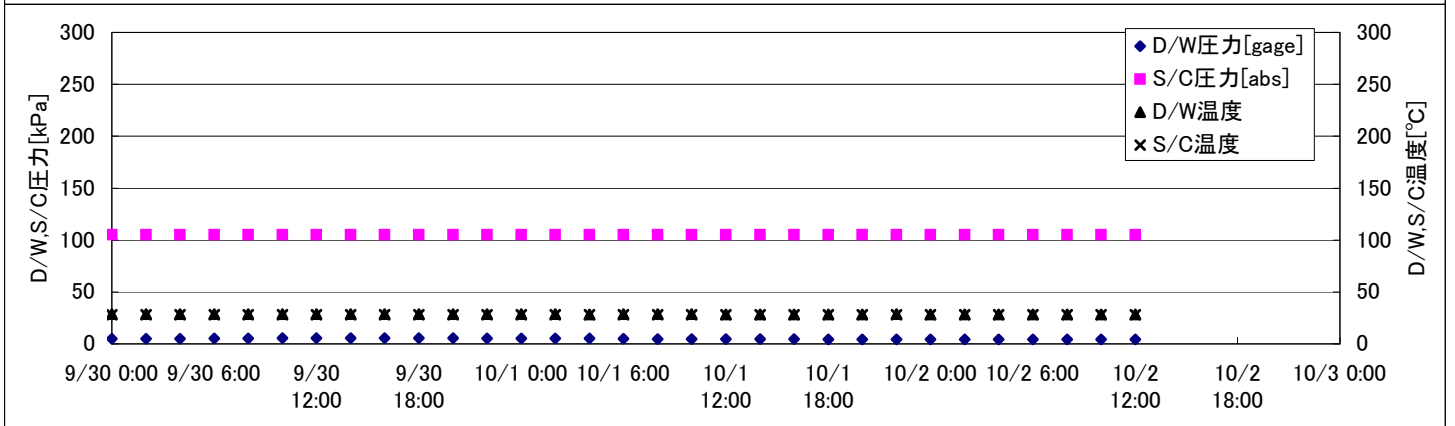
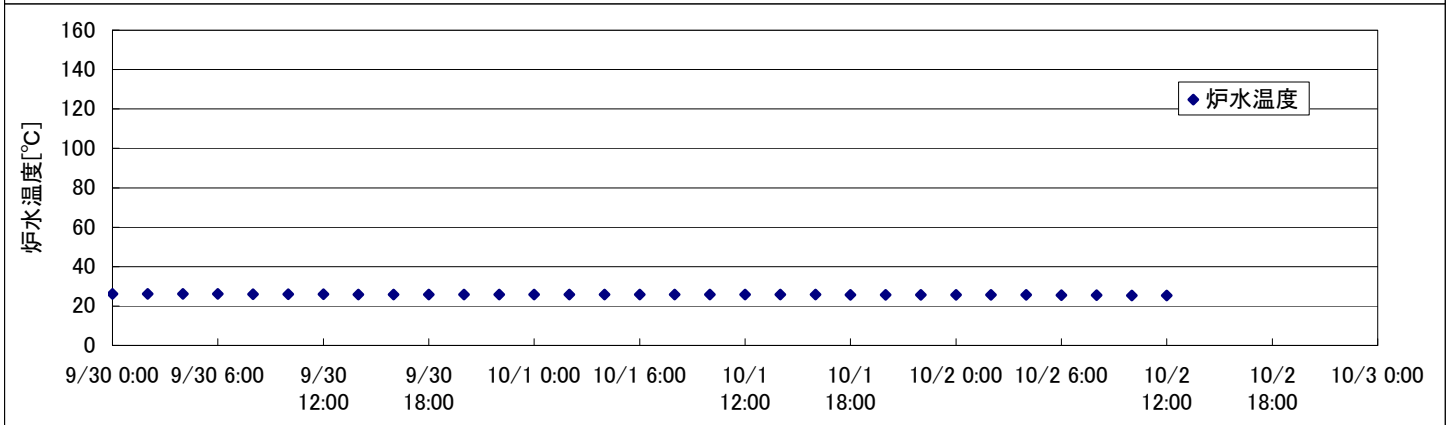
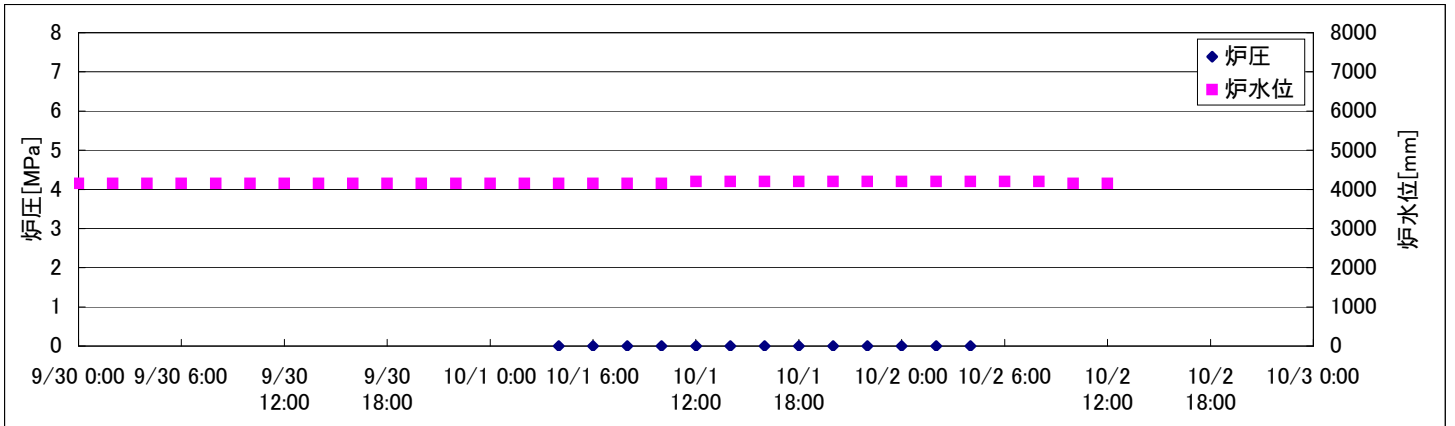
D/W圧力について

・パーソナルエアロックドア開放中であるため、9/6 10:00 より記載せず

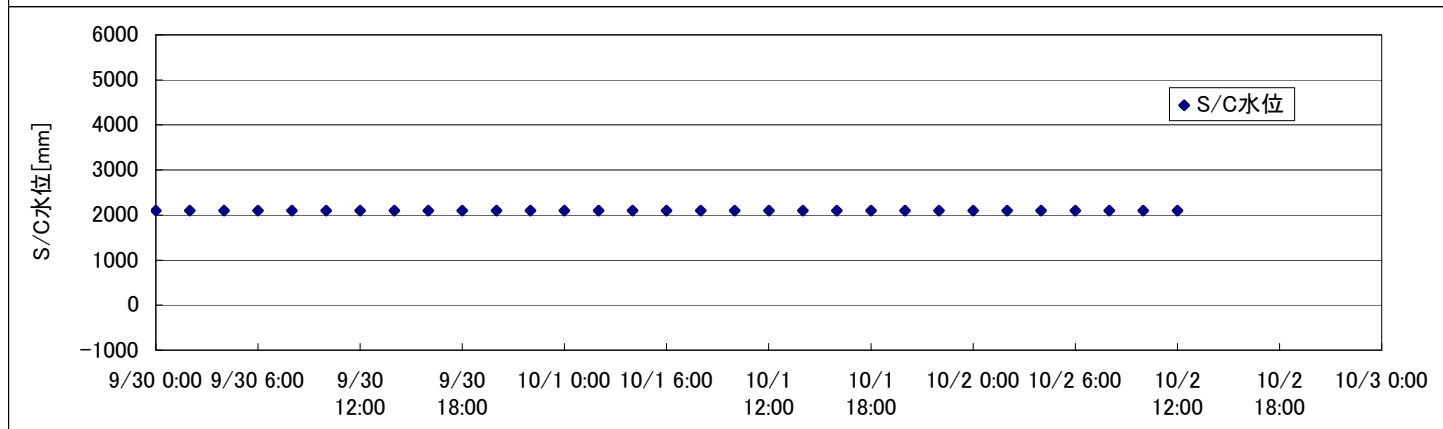
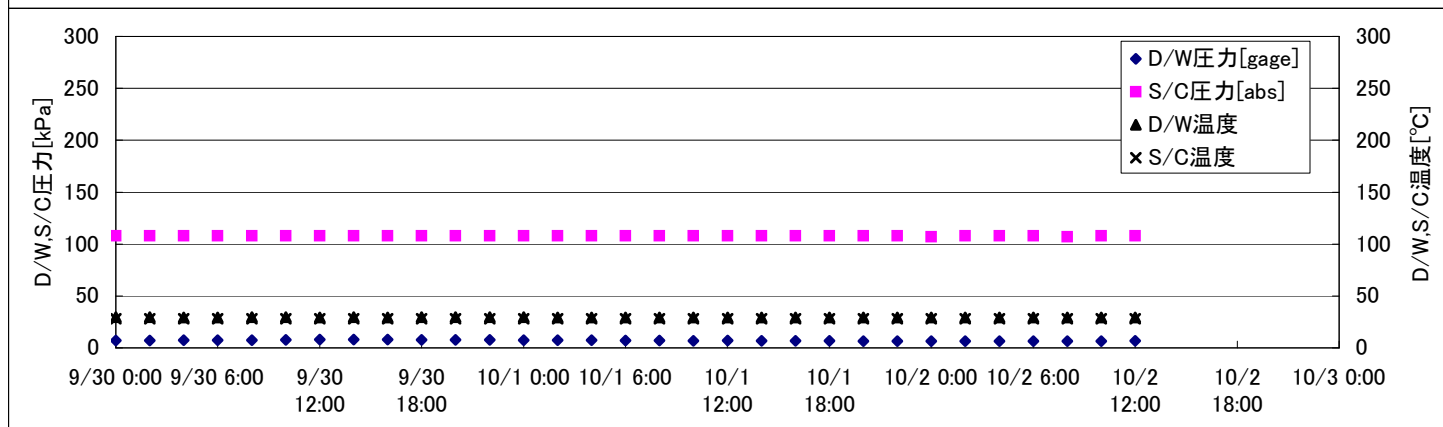
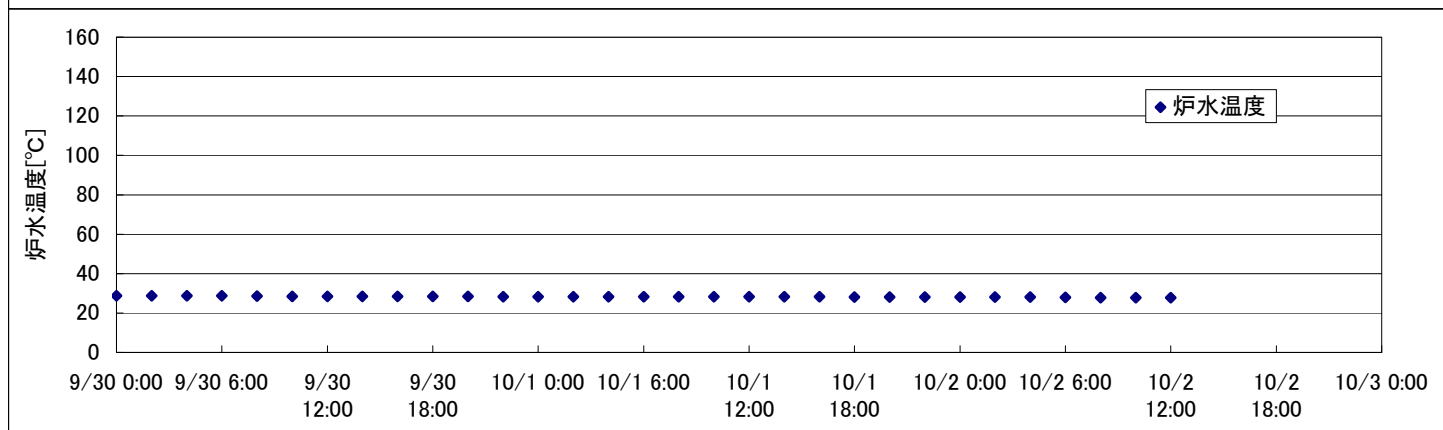
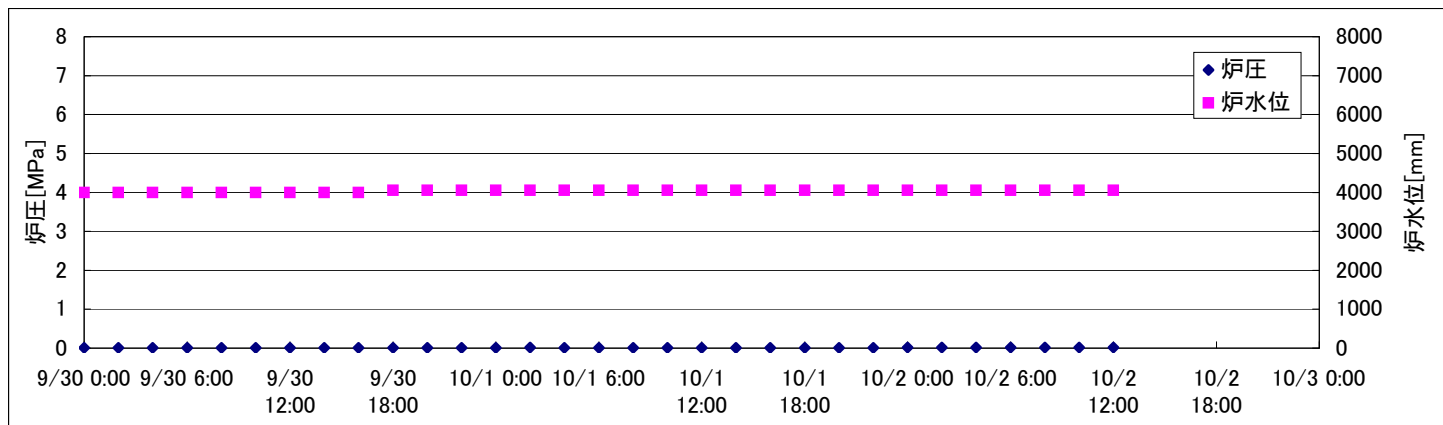
2F-1号機



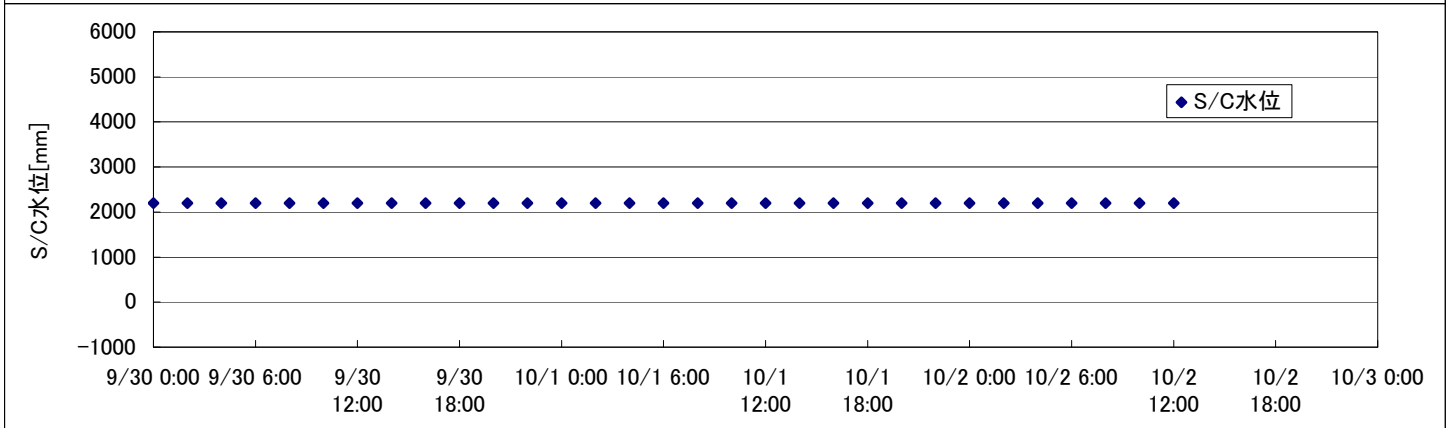
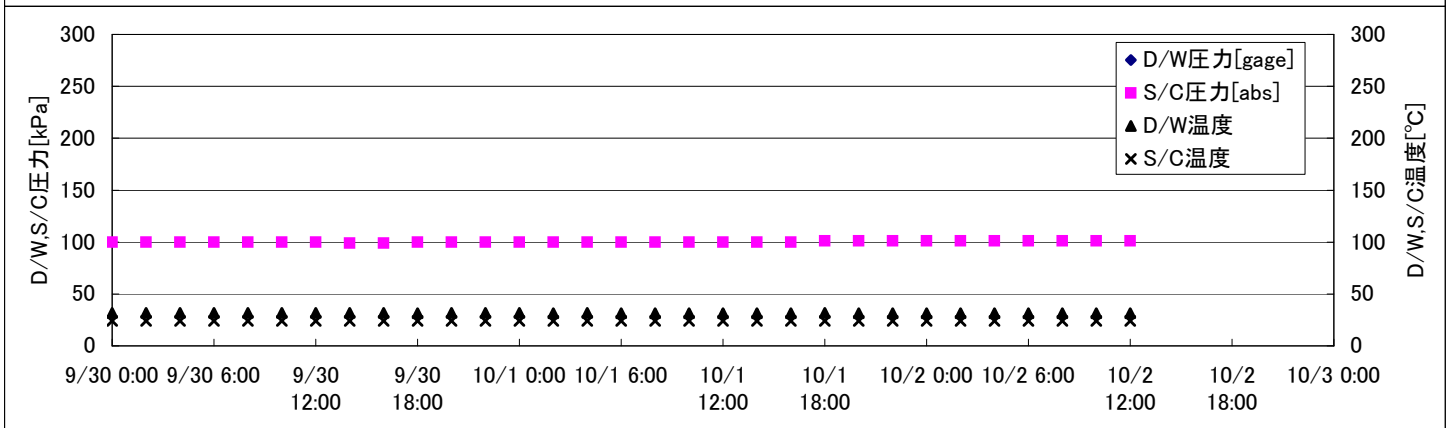
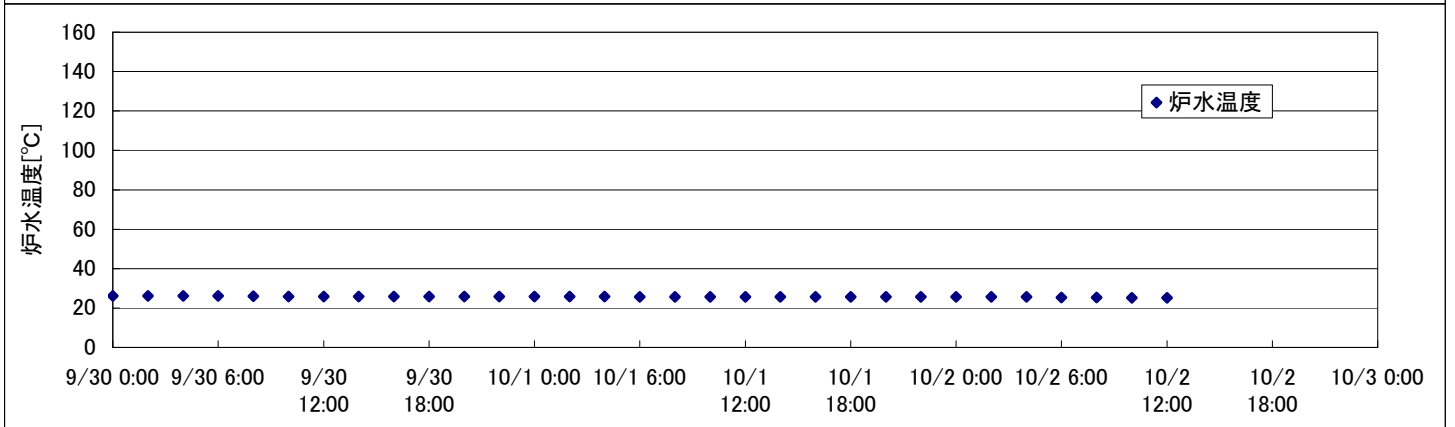
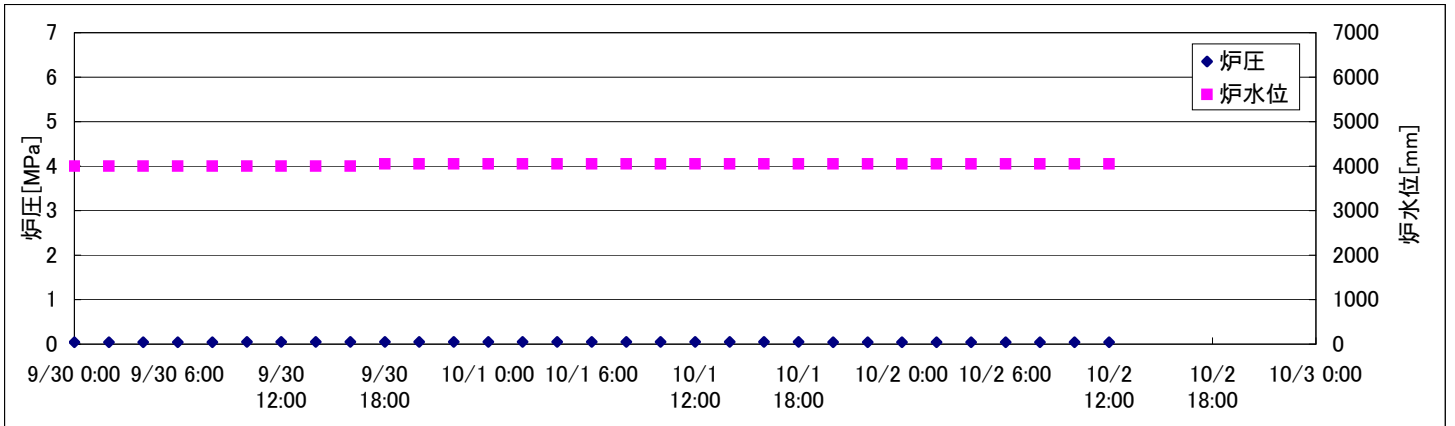
2F-2号機



2F-3号機



2F-4号機



2F-4号機

※燃料頂部(TAF)からの水位=炉水位+4200[mm]

時間	炉圧 [MPa (gage)]	炉水位 [mm] 停止時	炉水温度[°C]	D/W圧力 [kPa(gage)]	D/W温度 [°C]	S/C圧力 [kPa(abs)]	S/C水位 [mm]	S/C温度 [°C]
2011/9/30 0:00	0.04	4000	26.1		31.8	100	2200	24
2011/9/30 2:00	0.04	4000	26.1		31.8	100	2200	24
2011/9/30 4:00	0.04	4000	26.1		31.8	100	2200	24
2011/9/30 6:00	0.04	4000	26.1		31.8	100	2200	24
2011/9/30 8:00	0.04	4000	26.0		31.8	100	2200	24
2011/9/30 10:00	0.05	4000	25.9		31.8	100	2200	24
2011/9/30 12:00	0.05	4000	25.9		31.8	100	2200	24
2011/9/30 14:00	0.05	4000	25.9		31.8	99	2200	24
2011/9/30 16:00	0.05	4000	25.9		31.8	99	2200	24
2011/9/30 18:00	0.05	4050	25.8		31.6	100	2200	24
2011/9/30 20:00	0.05	4050	25.8		31.7	100	2200	24
2011/9/30 22:00	0.05	4050	25.8		31.7	100	2200	24
2011/10/1 0:00	0.05	4050	25.8		31.8	100	2200	24
2011/10/1 2:00	0.05	4050	25.8		31.6	100	2200	24
2011/10/1 4:00	0.05	4050	25.8		31.7	100	2200	24
2011/10/1 6:00	0.05	4050	25.7		31.6	100	2200	24
2011/10/1 8:00	0.05	4050	25.7		31.4	100	2200	24
2011/10/1 10:00	0.05	4050	25.7		31.6	100	2200	24
2011/10/1 12:00	0.05	4050	25.7		31.6	100	2200	24
2011/10/1 14:00	0.05	4050	25.7		31.6	100	2200	24
2011/10/1 16:00	0.05	4050	25.7		31.6	100	2200	24
2011/10/1 18:00	0.05	4050	25.7		31.7	101	2200	24
2011/10/1 20:00	0.04	4050	25.7		31.6	101	2200	24
2011/10/1 22:00	0.04	4050	25.7		31.6	101	2200	24
2011/10/2 0:00	0.04	4050	25.7		31.6	101	2200	24
2011/10/2 2:00	0.04	4050	25.6		31.6	101	2200	24
2011/10/2 4:00	0.04	4050	25.6		31.6	101	2200	24
2011/10/2 6:00	0.04	4050	25.4		31.6	101	2200	24
2011/10/2 8:00	0.04	4050	25.3		31.6	101	2200	24
2011/10/2 10:00	0.04	4050	25.2		31.6	101	2200	24
2011/10/2 12:00	0.04	4050	25.2		31.6	101	2200	24
2011/10/2 14:00								
2011/10/2 16:00								
2011/10/2 18:00								
2011/10/2 20:00								
2011/10/2 22:00								
2011/10/3 0:00								

D/W圧力について

・パーソナルエアロックドア開放中であるため、9/6 10:00 より記載せず