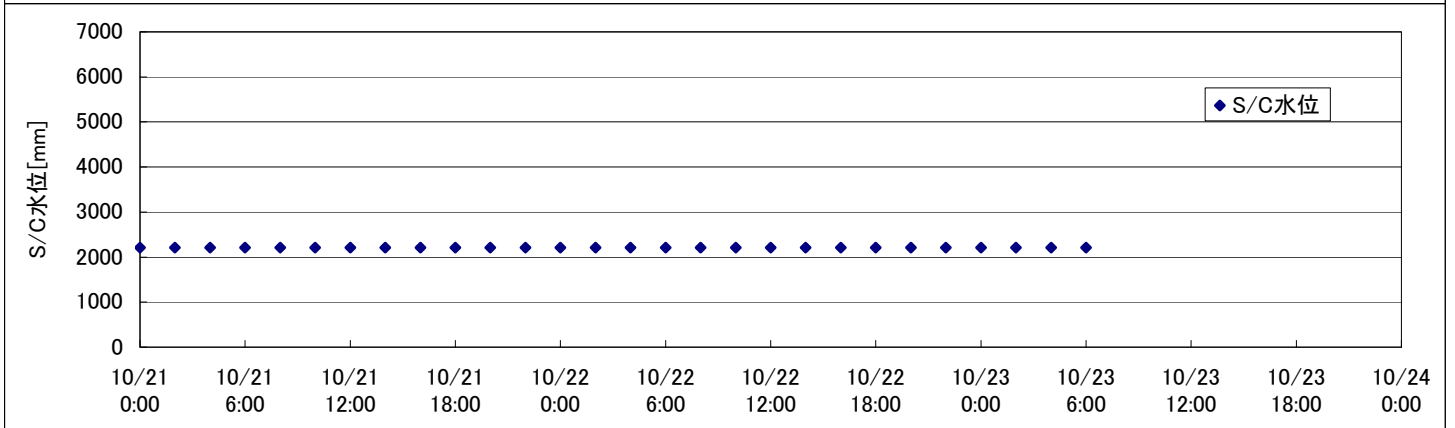
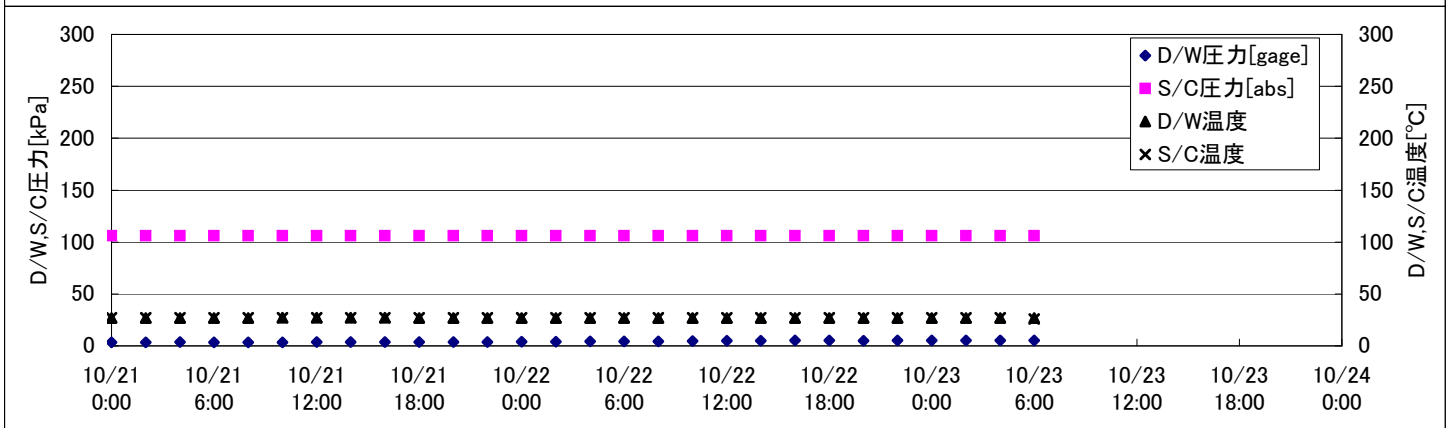
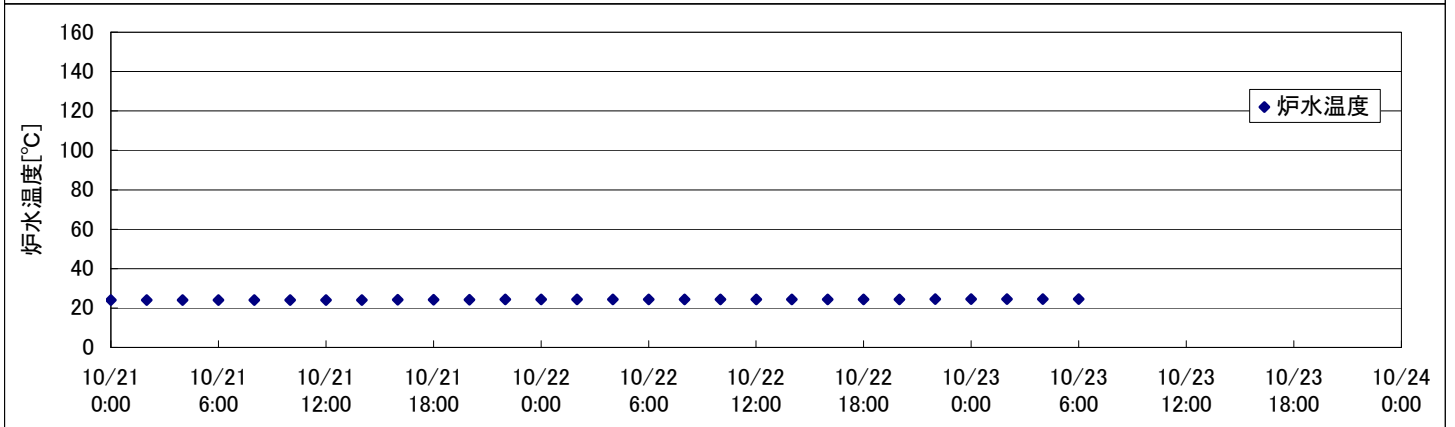
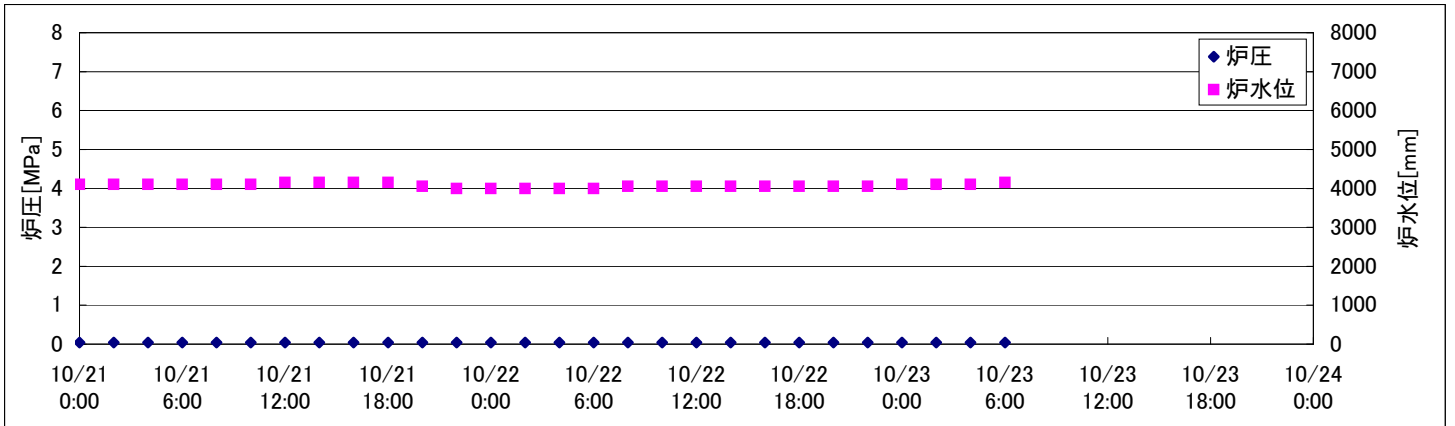
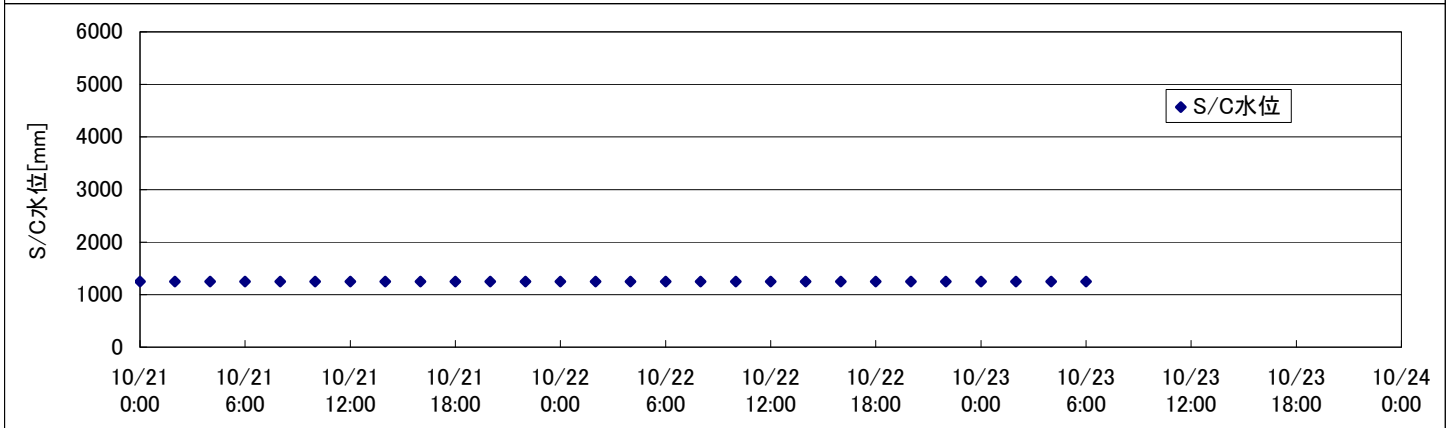
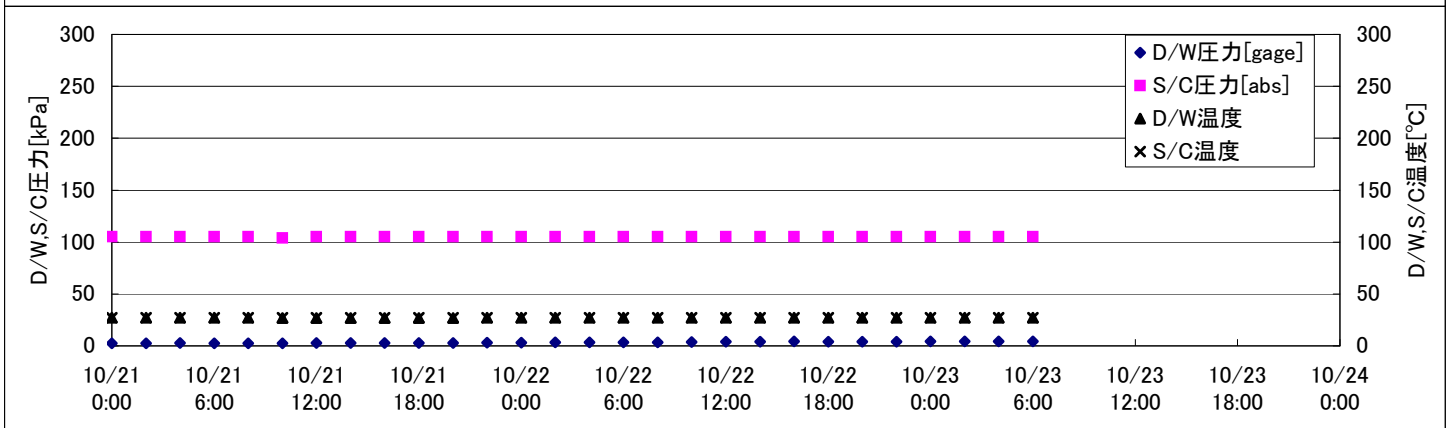
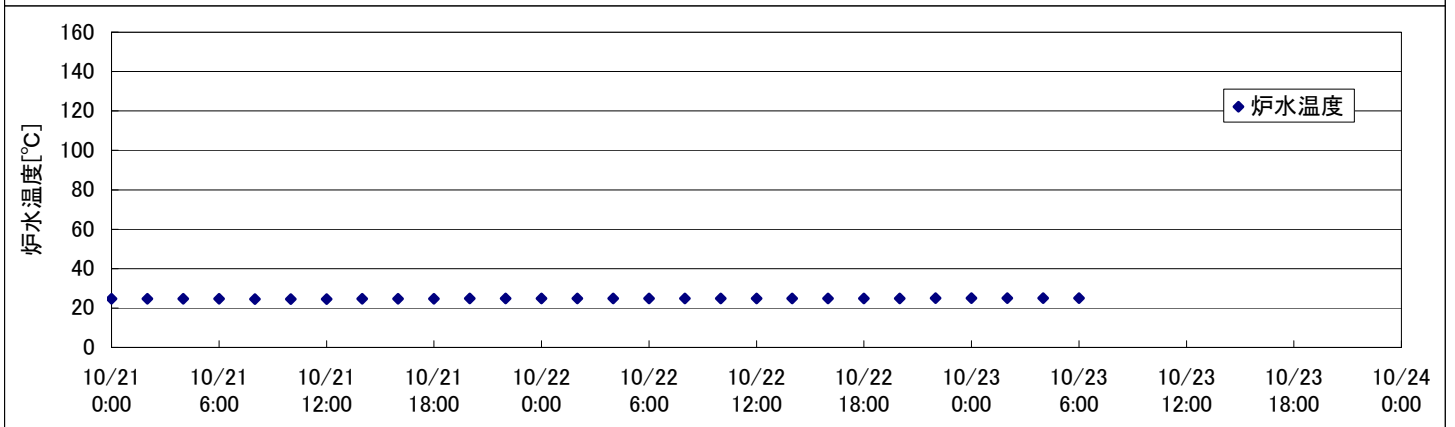
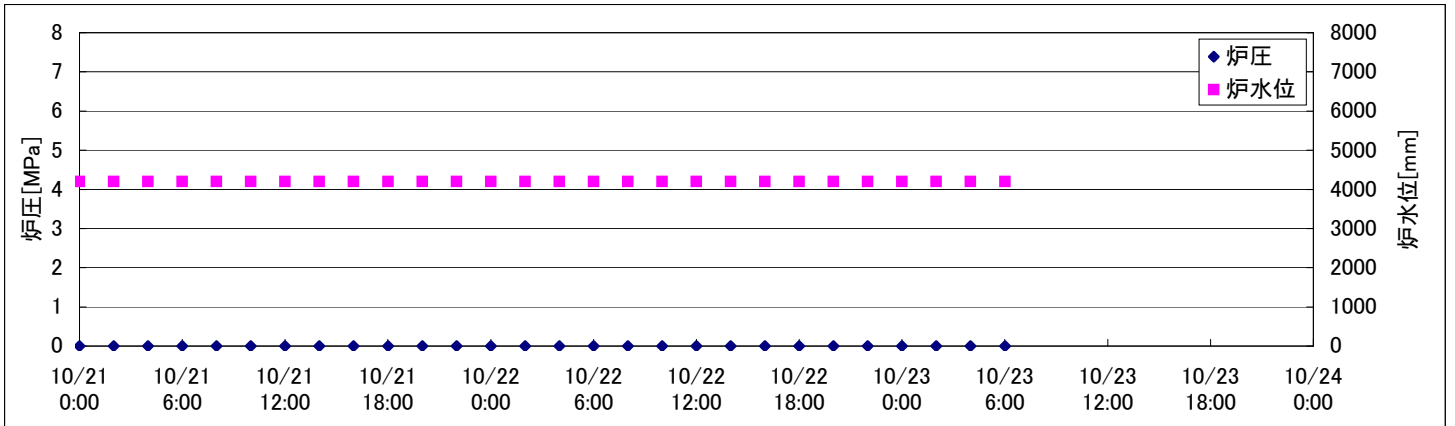


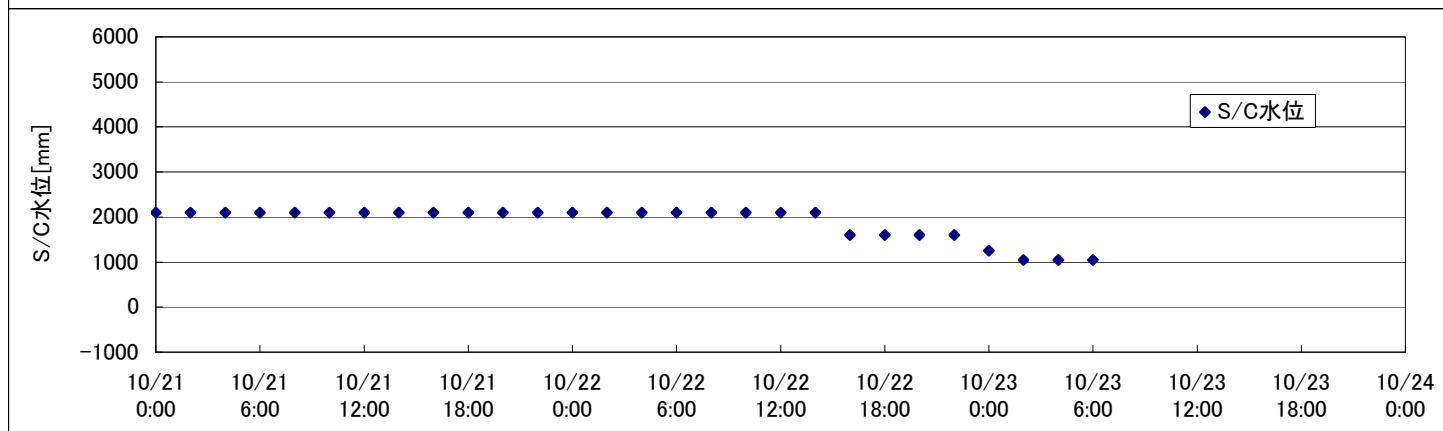
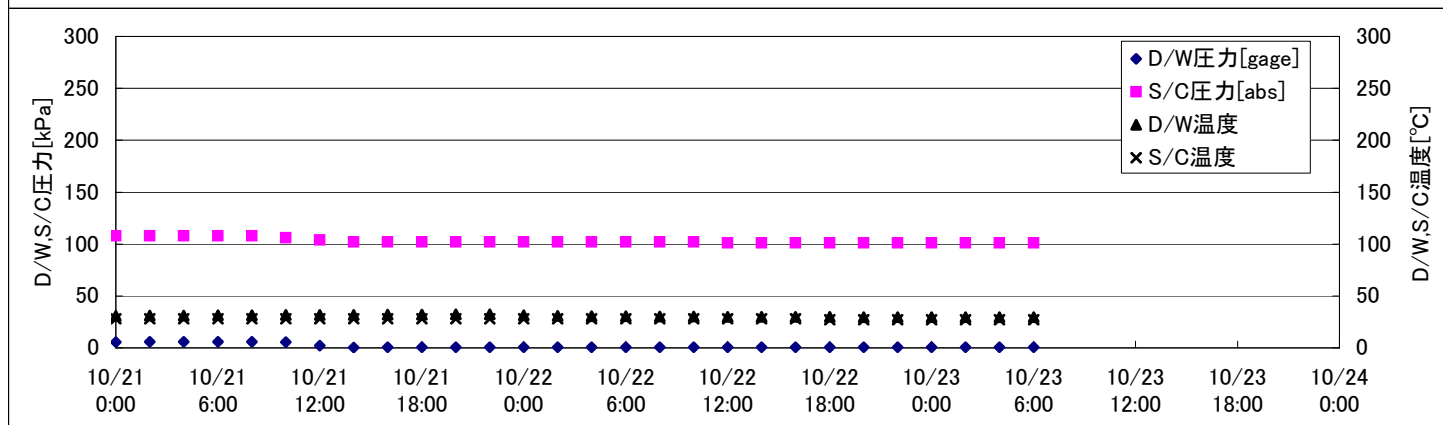
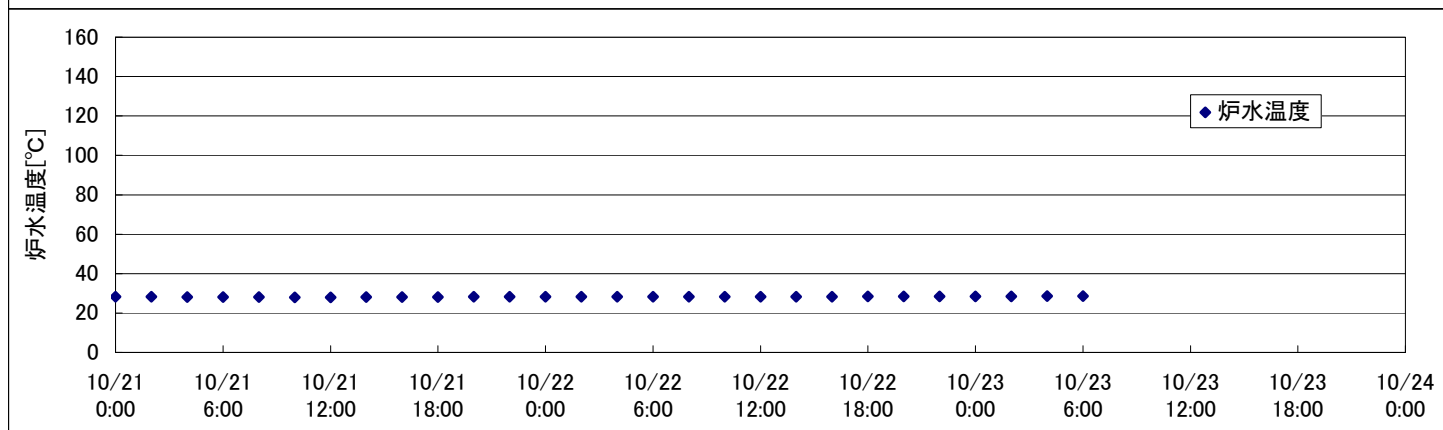
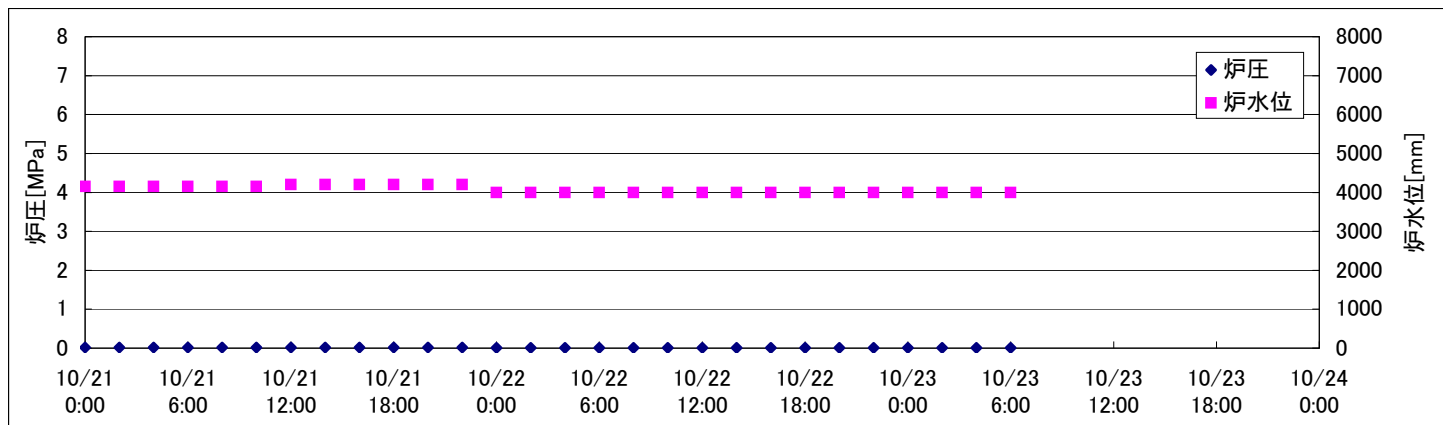
## 2F-1号機



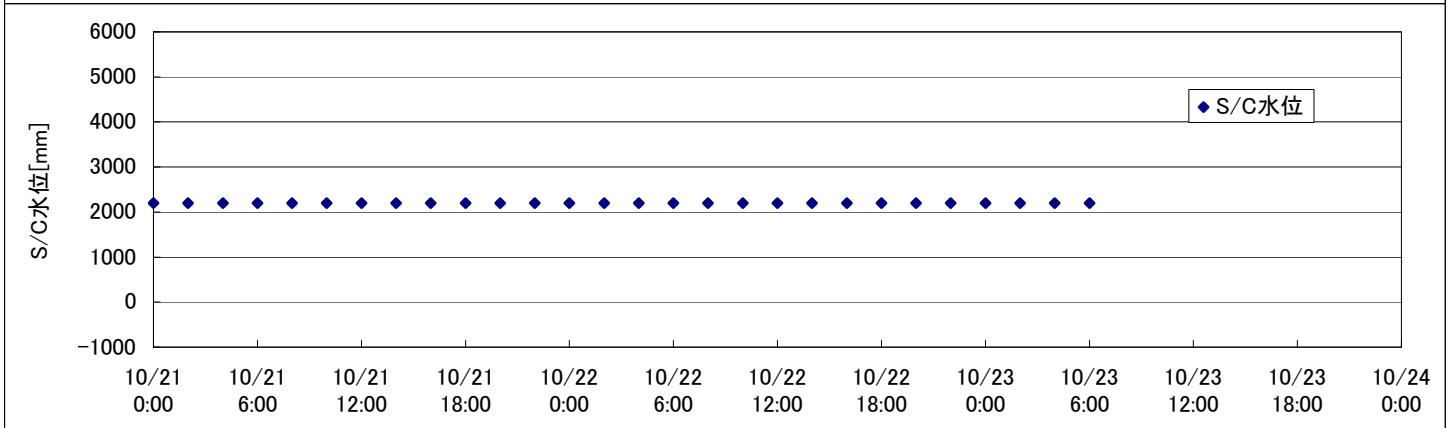
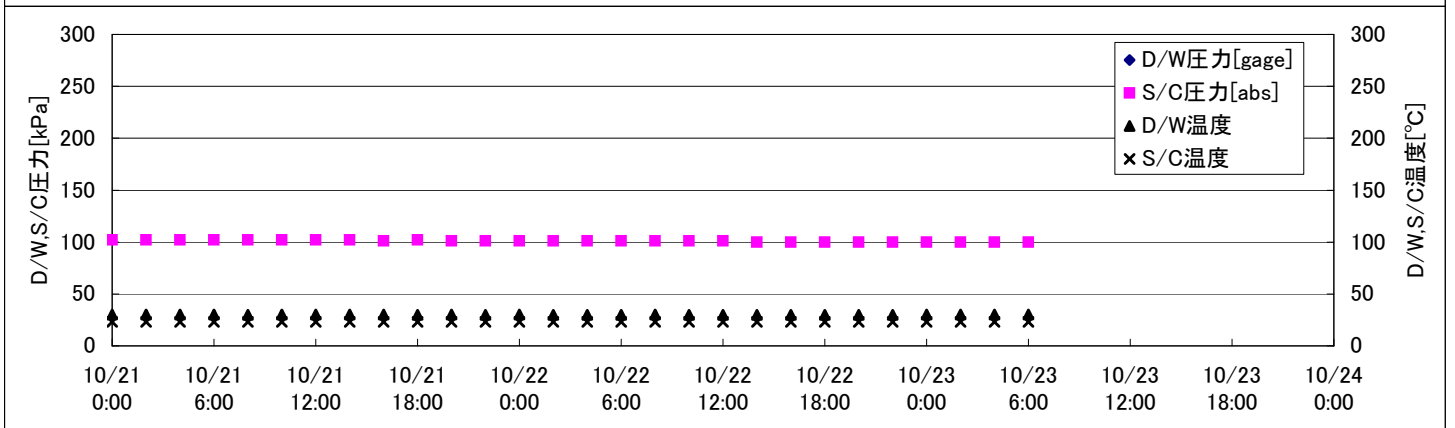
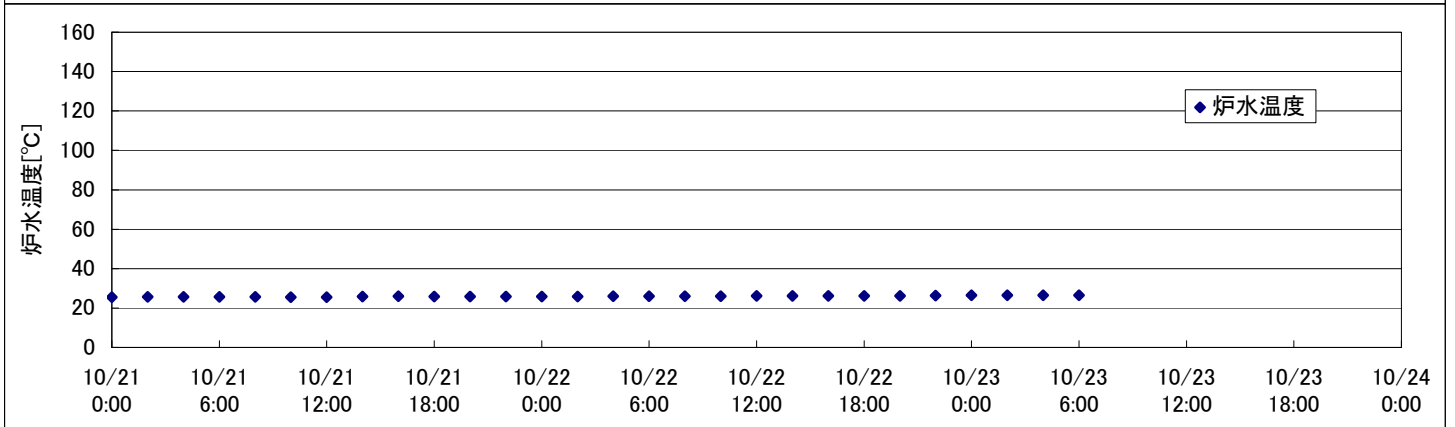
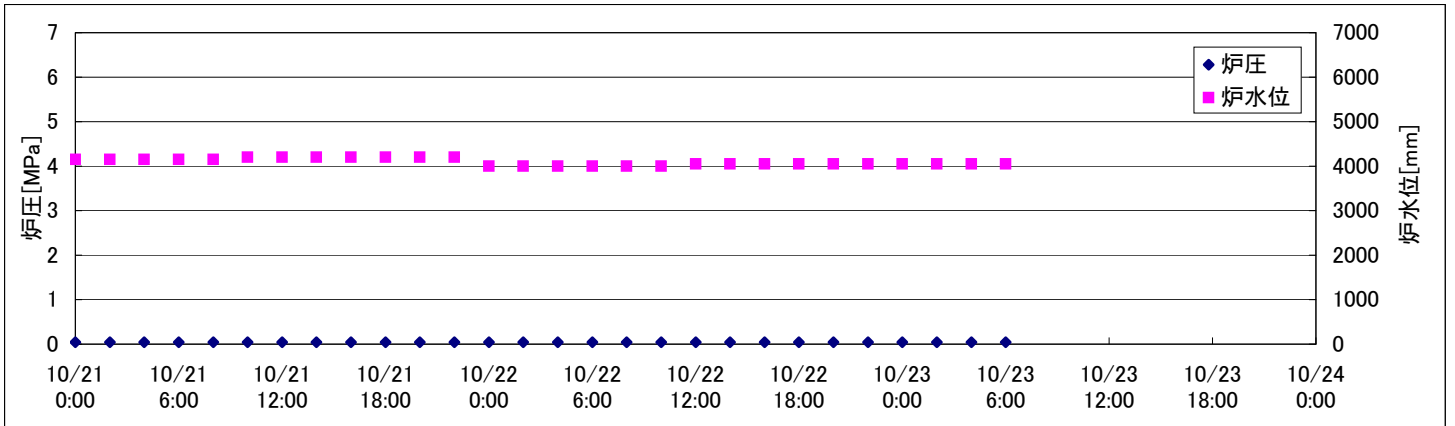
## 2F-2号機



## 2F-3号機



## 2F-4号機







## 2F-3号機

※燃料頂部(TAF)からの水位 = 炉水位 + 4200[mm]

時間	炉圧 [MPa (gage)]	炉水位 [mm] 停止時	炉水温度[°C]	D/W圧力 [kPa(gage)]	D/W温度 [°C]	S/C圧力 [kPa(abs)]	S/C水位 [mm]	S/C温度 [°C]
2011/10/21 0:00	0.02	4150	28.2	6	30.9	108	2100	28
2011/10/21 2:00	0.02	4150	28.2	6	31.1	108	2100	28
2011/10/21 4:00	0.02	4150	28.1	6	31.2	108	2100	28
2011/10/21 6:00	0.02	4150	28.1	6	31.4	108	2100	28
2011/10/21 8:00	0.02	4150	28.1	6	31.6	108	2100	28
2011/10/21 10:00	0.02	4150	28.0	6	31.7	106	2100	28
2011/10/21 12:00	0.02	4200	28.0	2	31.8	104	2100	28
2011/10/21 14:00	0.02	4200	28.1	0	31.9	102	2100	28
2011/10/21 16:00	0.02	4200	28.1	1	32.0	102	2100	28
2011/10/21 18:00	0.02	4200	28.1	1	32.0	102	2100	28
2011/10/21 20:00	0.02	4200	28.2	1	32.3	102	2100	28
2011/10/21 22:00	0.02	4200	28.2	1	32.5	102	2100	28
2011/10/22 0:00	0.01	4000	28.2	1	31.3	102	2100	28
2011/10/22 2:00	0.01	4000	28.2	1	30.8	102	2100	28
2011/10/22 4:00	0.01	4000	28.2	1	30.5	102	2100	28
2011/10/22 6:00	0.01	4000	28.3	1	30.4	102	2100	28
2011/10/22 8:00	0.01	4000	28.2	1	30.2	102	2100	28
2011/10/22 10:00	0.01	4000	28.2	1	30.2	102	2100	28
2011/10/22 12:00	0.01	4000	28.3	1	30.0	101	2100	28
2011/10/22 14:00	0.01	4000	28.3	1	30.0	101	2100	28
2011/10/22 16:00	0.01	4000	28.3	1	29.8	101	1600	28
2011/10/22 18:00	0.01	4000	28.4	1	29.8	101	1600	27
2011/10/22 20:00	0.01	4000	28.4	1	29.6	101	1600	27
2011/10/22 22:00	0.01	4000	28.5	1	29.6	101	1600	27
2011/10/23 0:00	0.01	4000	28.5	1	29.6	101	1250	27
2011/10/23 2:00	0.01	4000	28.5	1	29.6	101	1050	27
2011/10/23 4:00	0.01	4000	28.6	1	29.5	101	1050	27
<b>2011/10/23 6:00</b>	<b>0.01</b>	<b>4000</b>	<b>28.6</b>	<b>1</b>	<b>29.5</b>	<b>101</b>	<b>1050</b>	<b>27</b>
2011/10/23 8:00								
2011/10/23 10:00								
2011/10/23 12:00								
2011/10/23 14:00								
2011/10/23 16:00								
2011/10/23 18:00								
2011/10/23 20:00								
2011/10/23 22:00								
2011/10/24 0:00								

S/C水位について  
 ・10/22 14:52~16:07  
 ・10/22 22:38~10/23 0:39  
 S/Cブロー実施ため、S/C水位が大幅に低下中。

## 2F-4号機

※燃料頂部(TAF)からの水位 = 炉水位 + 4200[mm]

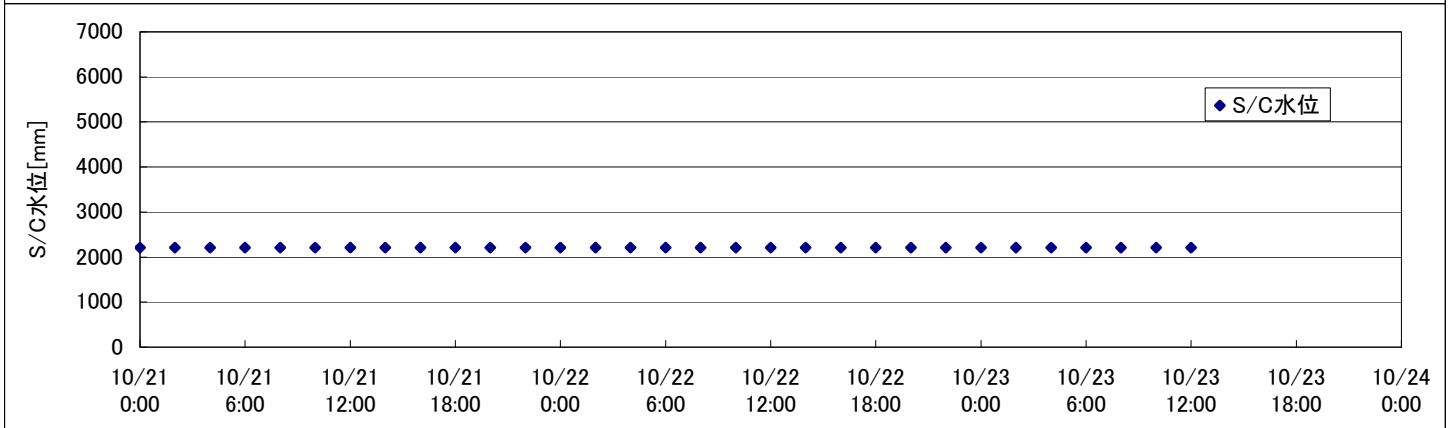
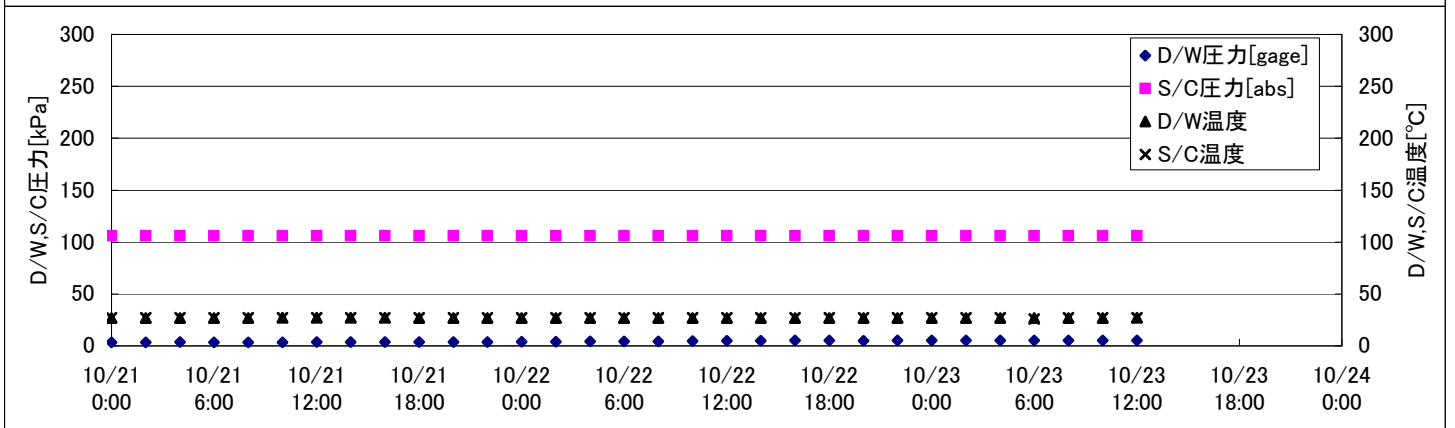
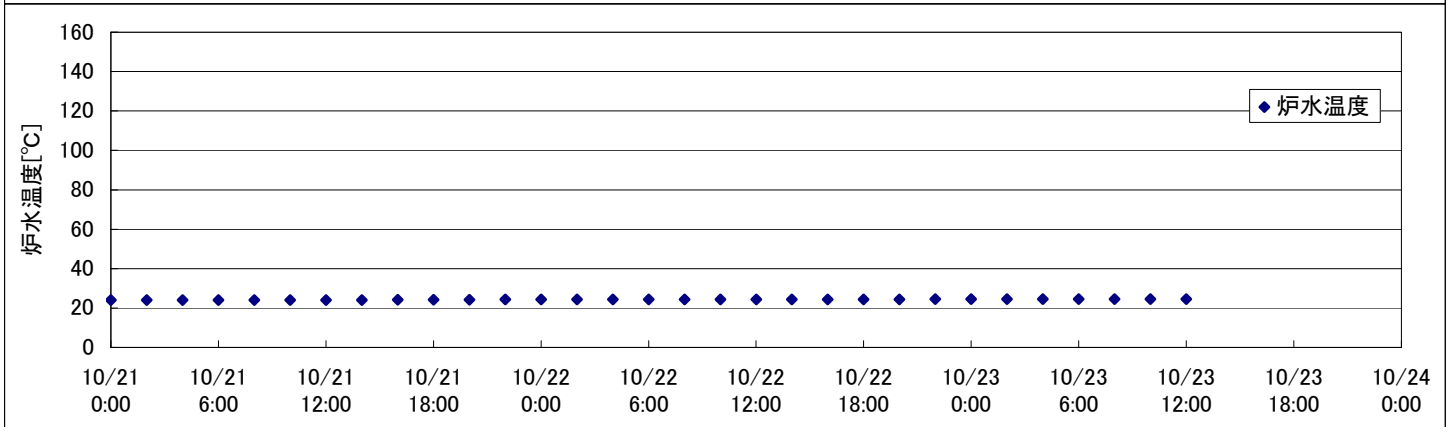
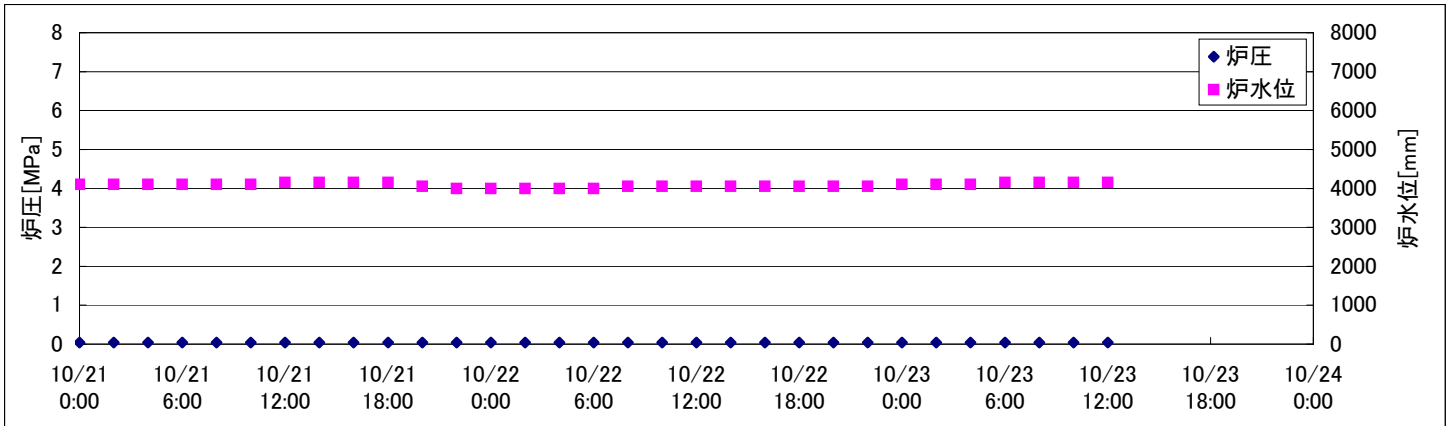
時間	炉圧 [MPa (gage)]	炉水位 [mm] 停止時	炉水温度[°C]	D/W圧力 [kPa(gage)]	D/W温度 [°C]	S/C圧力 [kPa(abs)]	S/C水位 [mm]	S/C温度 [°C]
2011/10/21 0:00	0.04	4150	25.5		30.2	102	2200	23
2011/10/21 2:00	0.04	4150	25.6		30.2	102	2200	23
2011/10/21 4:00	0.04	4150	25.6		30.2	102	2200	23
2011/10/21 6:00	0.04	4150	25.6		30.2	102	2200	23
2011/10/21 8:00	0.04	4150	25.6		30.0	102	2200	23
2011/10/21 10:00	0.04	4200	25.5		30.1	102	2200	23
2011/10/21 12:00	0.04	4200	25.5		30.1	102	2200	23
2011/10/21 14:00	0.04	4200	25.8		30.1	102	2200	23
2011/10/21 16:00	0.04	4200	26.0		30.1	101	2200	23
2011/10/21 18:00	0.04	4200	25.9		30.0	102	2200	23
2011/10/21 20:00	0.04	4200	25.9		30.1	101	2200	23
2011/10/21 22:00	0.04	4200	25.9		30.0	101	2200	23
2011/10/22 0:00	0.04	4000	25.9		30.1	101	2200	23
2011/10/22 2:00	0.04	4000	25.9		30.0	101	2200	23
2011/10/22 4:00	0.04	4000	26.0		30.0	101	2200	23
2011/10/22 6:00	0.04	4000	26.0		30.0	101	2200	23
2011/10/22 8:00	0.04	4000	26.0		30.1	101	2200	23
2011/10/22 10:00	0.04	4000	26.0		30.0	101	2200	23
2011/10/22 12:00	0.04	4050	26.1		30.0	101	2200	23
2011/10/22 14:00	0.04	4050	26.1		30.0	100	2200	23
2011/10/22 16:00	0.04	4050	26.1		30.0	100	2200	23
2011/10/22 18:00	0.04	4050	26.2		30.0	100	2200	23
2011/10/22 20:00	0.04	4050	26.2		30.0	100	2200	23
2011/10/22 22:00	0.04	4050	26.3		30.0	100	2200	23
2011/10/23 0:00	0.04	4050	26.4		30.1	100	2200	23
2011/10/23 2:00	0.04	4050	26.4		30.1	100	2200	23
2011/10/23 4:00	0.04	4050	26.4		30.1	100	2200	23
<b>2011/10/23 6:00</b>	<b>0.04</b>	<b>4050</b>	<b>26.5</b>		<b>30.1</b>	<b>100</b>	<b>2200</b>	<b>23</b>
2011/10/23 8:00								
2011/10/23 10:00								
2011/10/23 12:00								
2011/10/23 14:00								
2011/10/23 16:00								
2011/10/23 18:00								
2011/10/23 20:00								
2011/10/23 22:00								
2011/10/24 0:00								

D/W圧力について

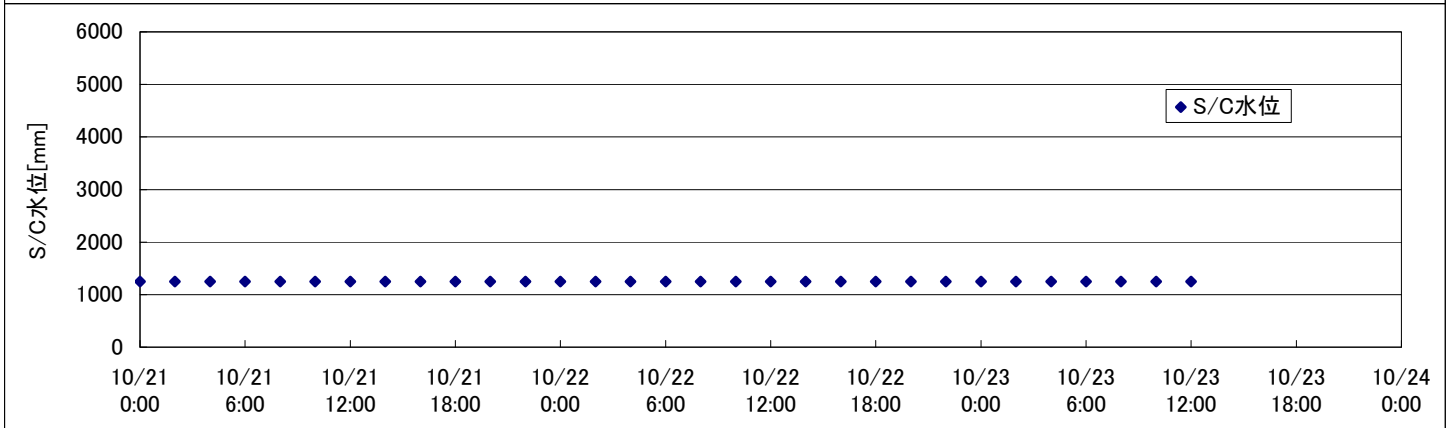
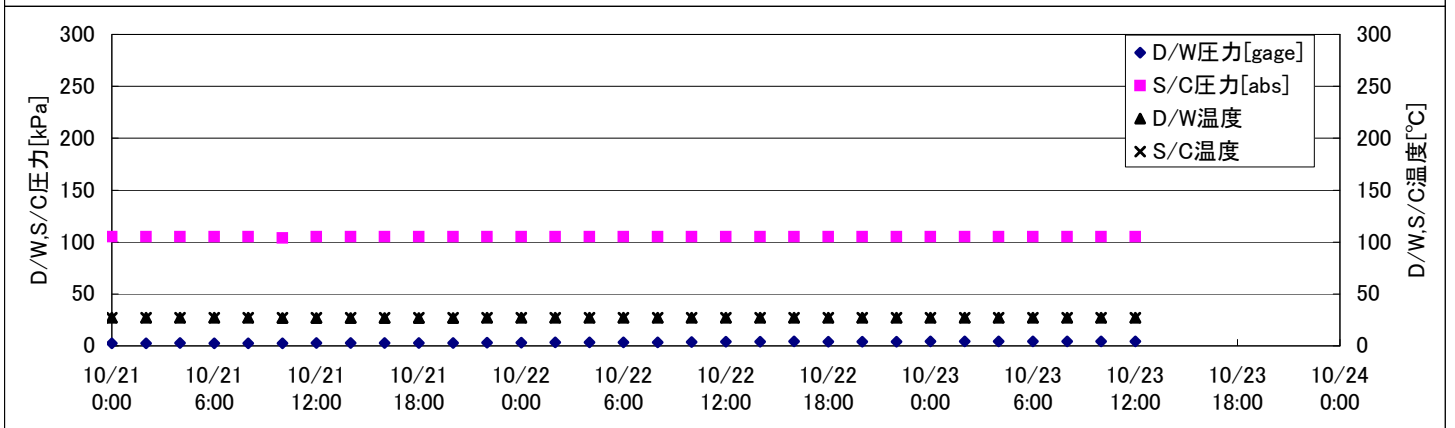
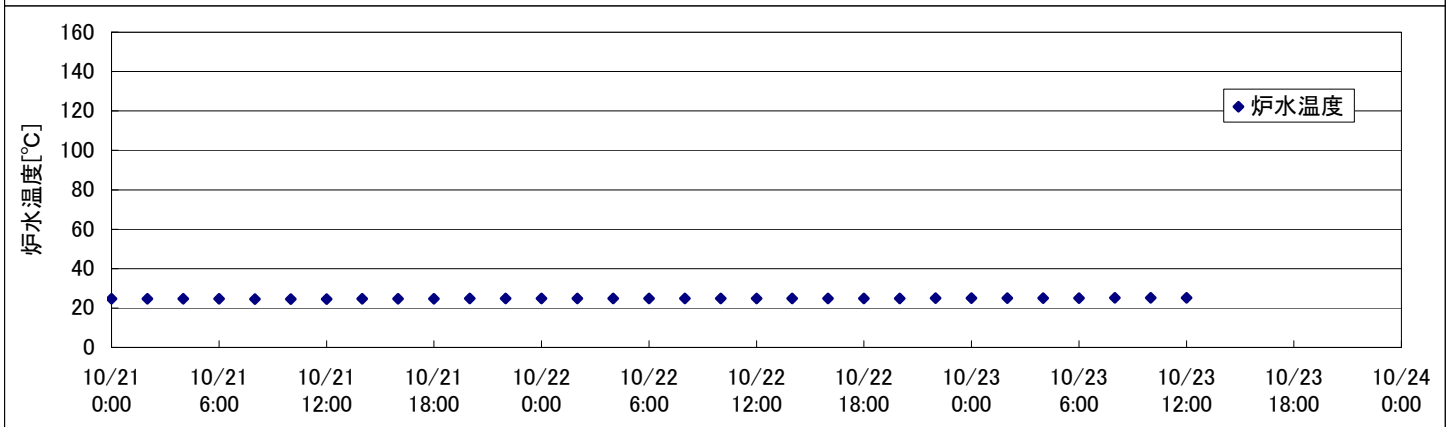
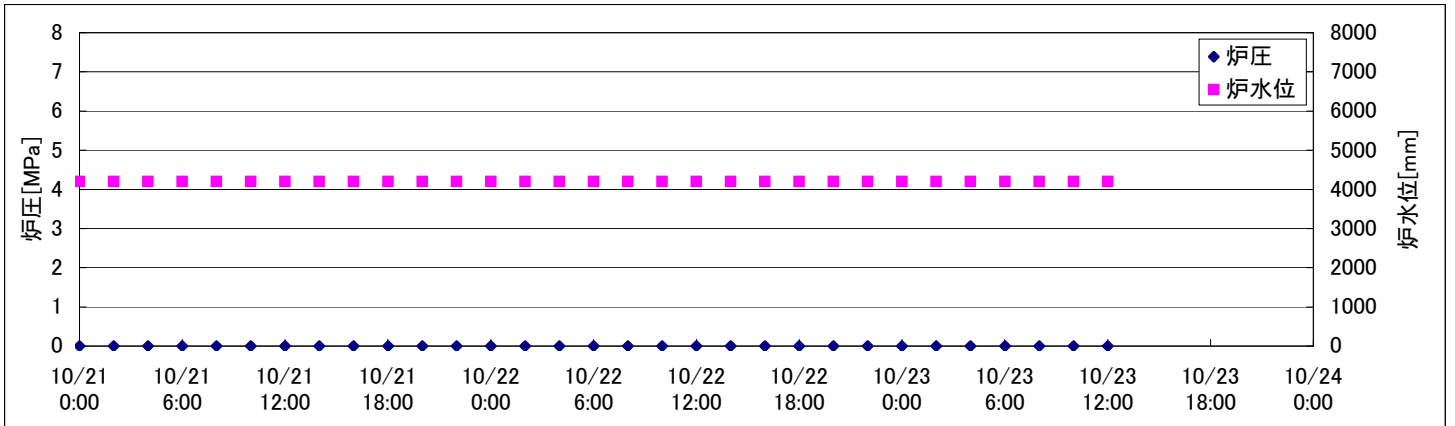
・パーソナルエアロックドア開放中であるため、9/6 10:00 より記載せず



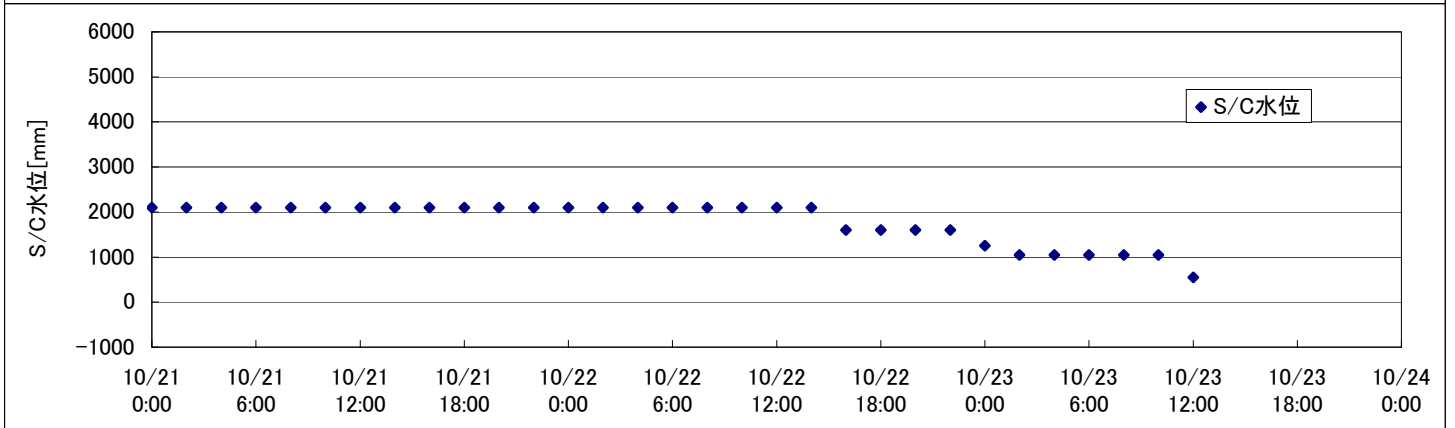
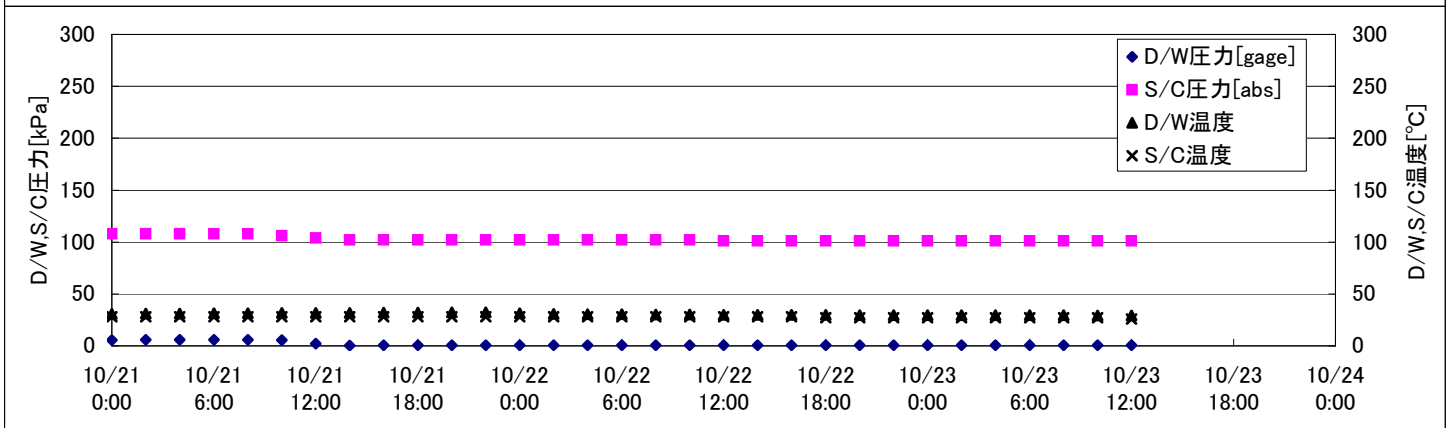
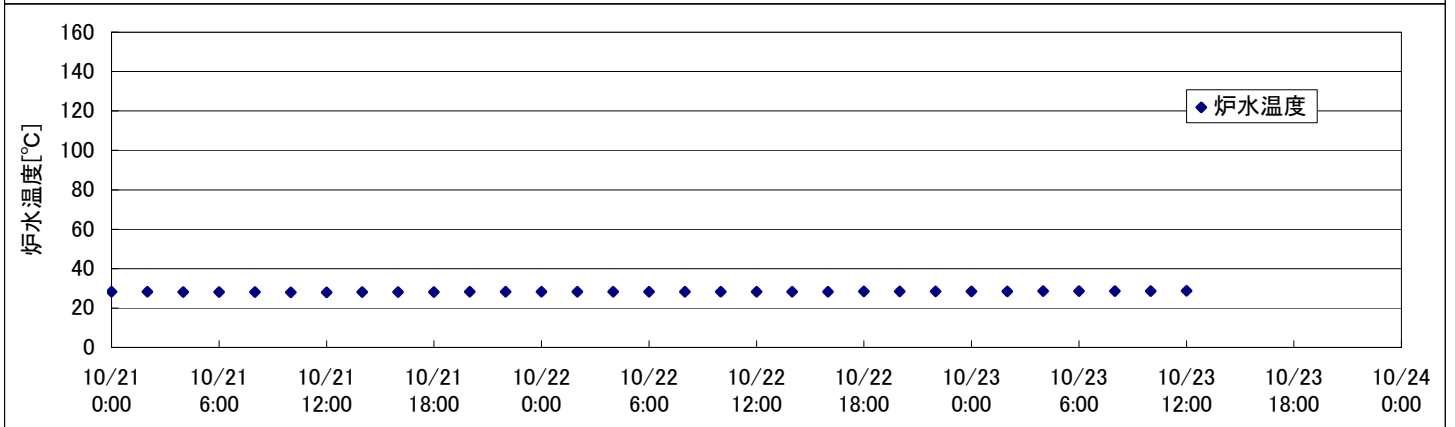
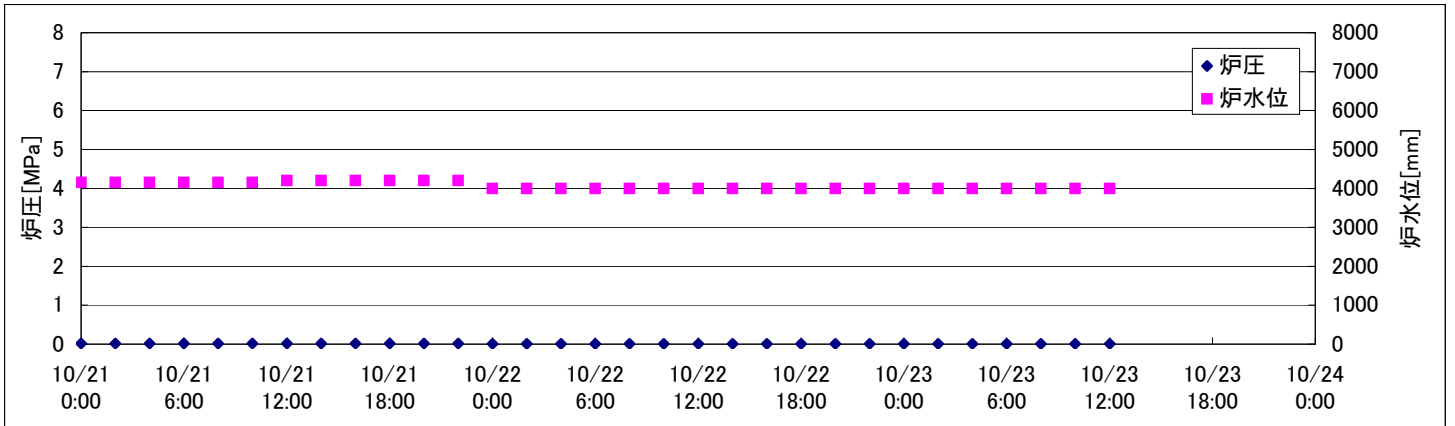
# 2F-1号機



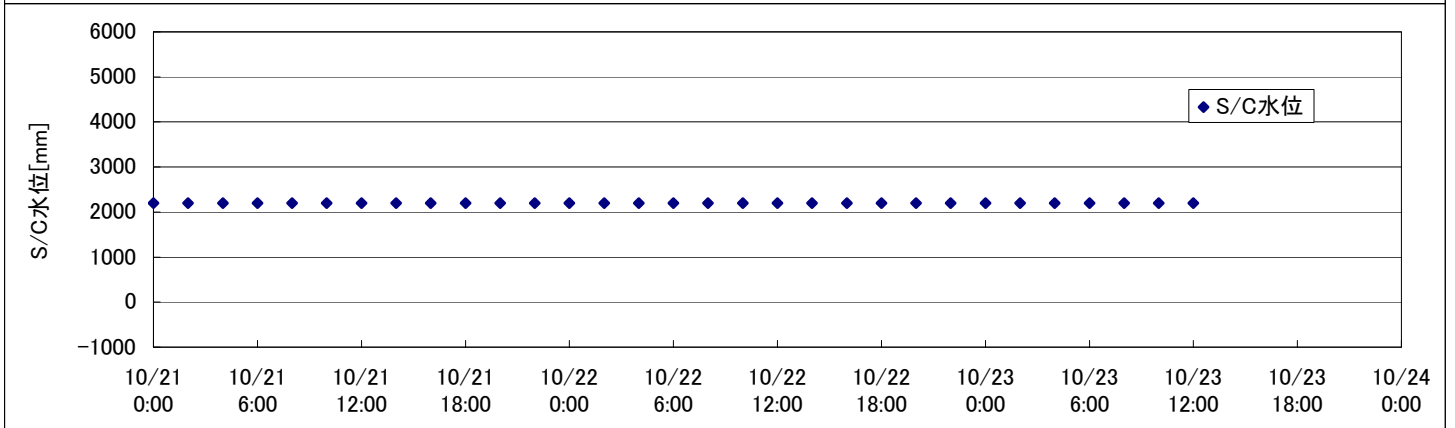
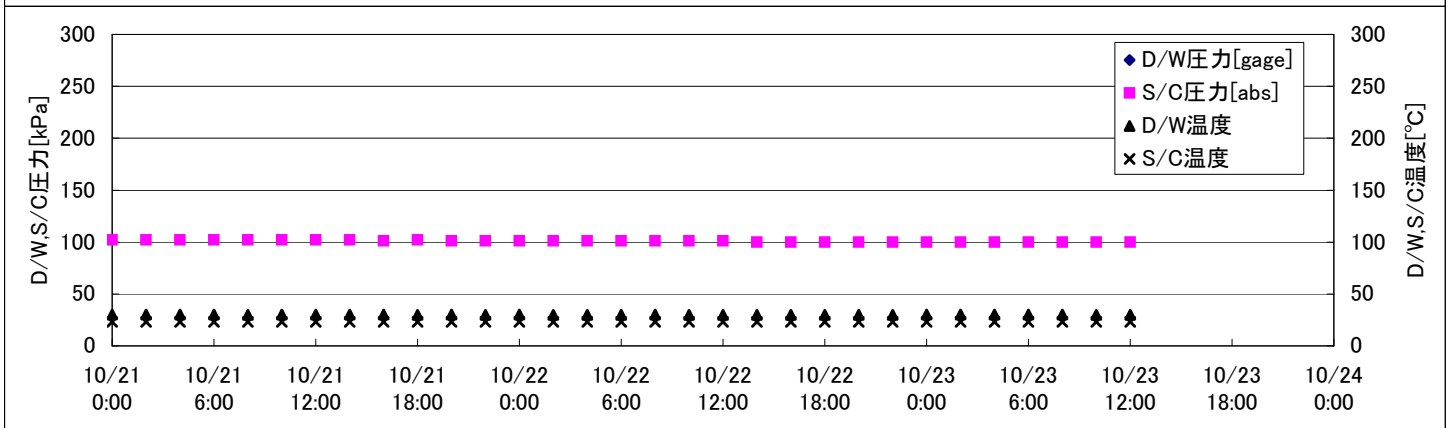
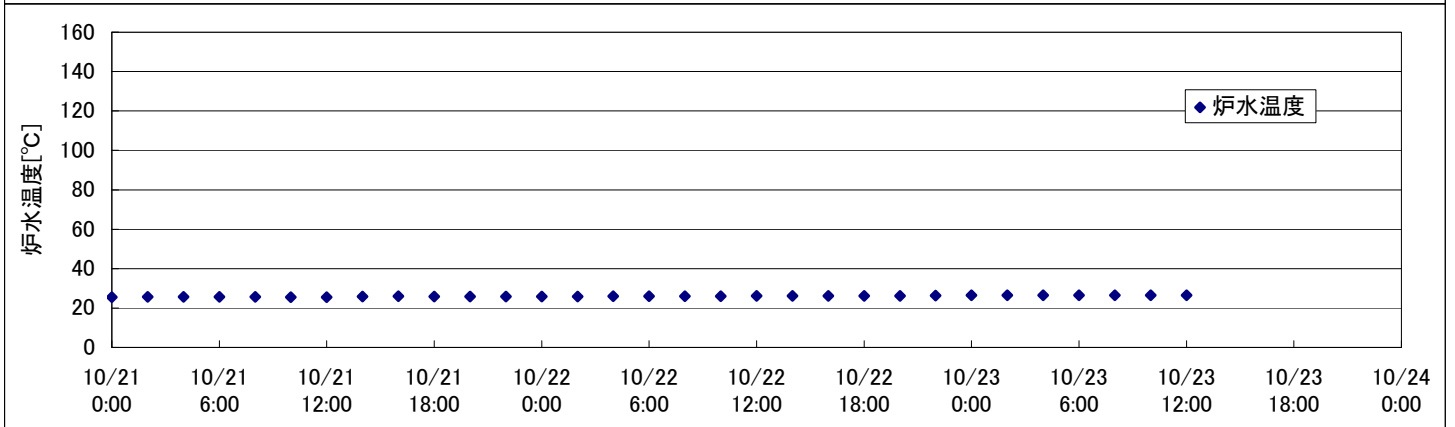
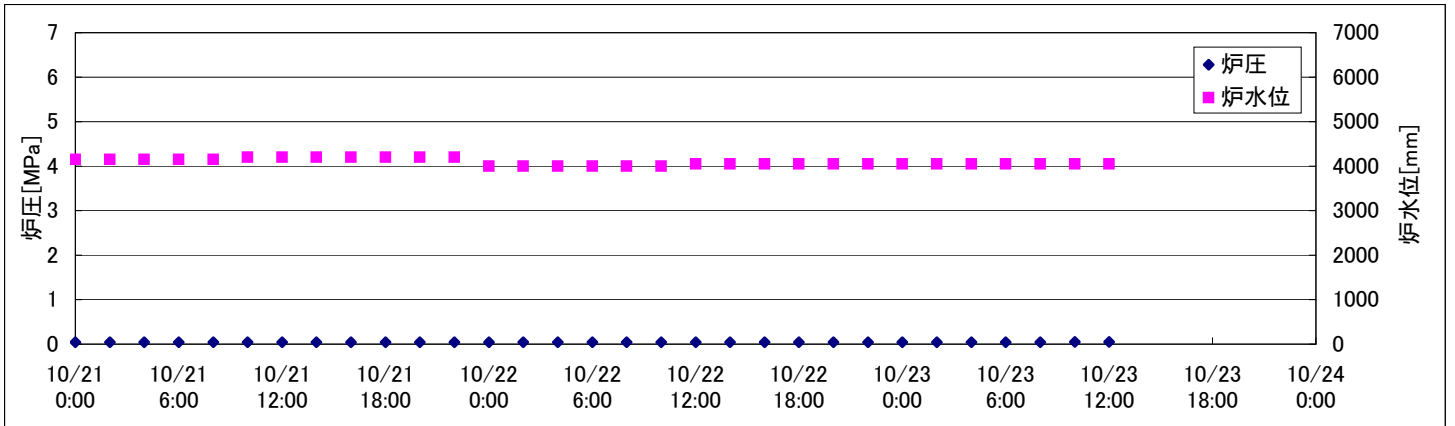
## 2F-2号機



## 2F-3号機



## 2F-4号機







## 2F-3号機

※燃料頂部(TAF)からの水位 = 炉水位 + 4200[mm]

時間	炉圧 [MPa (gage)]	炉水位 [mm] 停止時	炉水温度[°C]	D/W圧力 [kPa(gage)]	D/W温度 [°C]	S/C圧力 [kPa(abs)]	S/C水位 [mm]	S/C温度 [°C]
2011/10/21 0:00	0.02	4150	28.2	6	30.9	108	2100	28
2011/10/21 2:00	0.02	4150	28.2	6	31.1	108	2100	28
2011/10/21 4:00	0.02	4150	28.1	6	31.2	108	2100	28
2011/10/21 6:00	0.02	4150	28.1	6	31.4	108	2100	28
2011/10/21 8:00	0.02	4150	28.1	6	31.6	108	2100	28
2011/10/21 10:00	0.02	4150	28.0	6	31.7	106	2100	28
2011/10/21 12:00	0.02	4200	28.0	2	31.8	104	2100	28
2011/10/21 14:00	0.02	4200	28.1	0	31.9	102	2100	28
2011/10/21 16:00	0.02	4200	28.1	1	32.0	102	2100	28
2011/10/21 18:00	0.02	4200	28.1	1	32.0	102	2100	28
2011/10/21 20:00	0.02	4200	28.2	1	32.3	102	2100	28
2011/10/21 22:00	0.02	4200	28.2	1	32.5	102	2100	28
2011/10/22 0:00	0.01	4000	28.2	1	31.3	102	2100	28
2011/10/22 2:00	0.01	4000	28.2	1	30.8	102	2100	28
2011/10/22 4:00	0.01	4000	28.2	1	30.5	102	2100	28
2011/10/22 6:00	0.01	4000	28.3	1	30.4	102	2100	28
2011/10/22 8:00	0.01	4000	28.2	1	30.2	102	2100	28
2011/10/22 10:00	0.01	4000	28.2	1	30.2	102	2100	28
2011/10/22 12:00	0.01	4000	28.3	1	30.0	101	2100	28
2011/10/22 14:00	0.01	4000	28.3	1	30.0	101	2100	28
2011/10/22 16:00	0.01	4000	28.3	1	29.8	101	1600	28
2011/10/22 18:00	0.01	4000	28.4	1	29.8	101	1600	27
2011/10/22 20:00	0.01	4000	28.4	1	29.6	101	1600	27
2011/10/22 22:00	0.01	4000	28.5	1	29.6	101	1600	27
2011/10/23 0:00	0.01	4000	28.5	1	29.6	101	1250	27
2011/10/23 2:00	0.01	4000	28.5	1	29.6	101	1050	27
2011/10/23 4:00	0.01	4000	28.6	1	29.5	101	1050	27
2011/10/23 6:00	0.01	4000	28.6	1	29.5	101	1050	27
2011/10/23 8:00	0.01	4000	28.6	1	29.5	101	1050	27
2011/10/23 10:00	0.01	4000	28.6	1	29.3	101	1050	27
<b>2011/10/23 12:00</b>	<b>0.01</b>	<b>4000</b>	<b>28.7</b>	<b>1</b>	<b>29.3</b>	<b>101</b>	<b>550</b>	<b>26</b>
2011/10/23 14:00								
2011/10/23 16:00								
2011/10/23 18:00								
2011/10/23 20:00								
2011/10/23 22:00								
2011/10/24 0:00								

S/C水位について  
 ・10/23 10:05～11:34  
 S/Cブロー実施ため、S/C水位が大幅に低下中。

## 2F-4号機

※燃料頂部(TAF)からの水位 = 炉水位 + 4200[mm]

時間	炉圧 [MPa (gage)]	炉水位 [mm] 停止時	炉水温度[°C]	D/W圧力 [kPa(gage)]	D/W温度 [°C]	S/C圧力 [kPa(abs)]	S/C水位 [mm]	S/C温度 [°C]
2011/10/21 0:00	0.04	4150	25.5		30.2	102	2200	23
2011/10/21 2:00	0.04	4150	25.6		30.2	102	2200	23
2011/10/21 4:00	0.04	4150	25.6		30.2	102	2200	23
2011/10/21 6:00	0.04	4150	25.6		30.2	102	2200	23
2011/10/21 8:00	0.04	4150	25.6		30.0	102	2200	23
2011/10/21 10:00	0.04	4200	25.5		30.1	102	2200	23
2011/10/21 12:00	0.04	4200	25.5		30.1	102	2200	23
2011/10/21 14:00	0.04	4200	25.8		30.1	102	2200	23
2011/10/21 16:00	0.04	4200	26.0		30.1	101	2200	23
2011/10/21 18:00	0.04	4200	25.9		30.0	102	2200	23
2011/10/21 20:00	0.04	4200	25.9		30.1	101	2200	23
2011/10/21 22:00	0.04	4200	25.9		30.0	101	2200	23
2011/10/22 0:00	0.04	4000	25.9		30.1	101	2200	23
2011/10/22 2:00	0.04	4000	25.9		30.0	101	2200	23
2011/10/22 4:00	0.04	4000	26.0		30.0	101	2200	23
2011/10/22 6:00	0.04	4000	26.0		30.0	101	2200	23
2011/10/22 8:00	0.04	4000	26.0		30.1	101	2200	23
2011/10/22 10:00	0.04	4000	26.0		30.0	101	2200	23
2011/10/22 12:00	0.04	4050	26.1		30.0	101	2200	23
2011/10/22 14:00	0.04	4050	26.1		30.0	100	2200	23
2011/10/22 16:00	0.04	4050	26.1		30.0	100	2200	23
2011/10/22 18:00	0.04	4050	26.2		30.0	100	2200	23
2011/10/22 20:00	0.04	4050	26.2		30.0	100	2200	23
2011/10/22 22:00	0.04	4050	26.3		30.0	100	2200	23
2011/10/23 0:00	0.04	4050	26.4		30.1	100	2200	23
2011/10/23 2:00	0.04	4050	26.4		30.1	100	2200	23
2011/10/23 4:00	0.04	4050	26.4		30.1	100	2200	23
2011/10/23 6:00	0.04	4050	26.5		30.1	100	2200	23
2011/10/23 8:00	0.04	4050	26.5		30.1	100	2200	23
2011/10/23 10:00	0.05	4050	26.5		30.0	100	2200	23
<b>2011/10/23 12:00</b>	<b>0.05</b>	<b>4050</b>	<b>26.5</b>		<b>30.0</b>	<b>100</b>	<b>2200</b>	<b>23</b>
2011/10/23 14:00								
2011/10/23 16:00								
2011/10/23 18:00								
2011/10/23 20:00								
2011/10/23 22:00								
2011/10/24 0:00								

D/W圧力について

・パーソナルエアロックドア開放中であるため、9/6 10:00 より記載せず