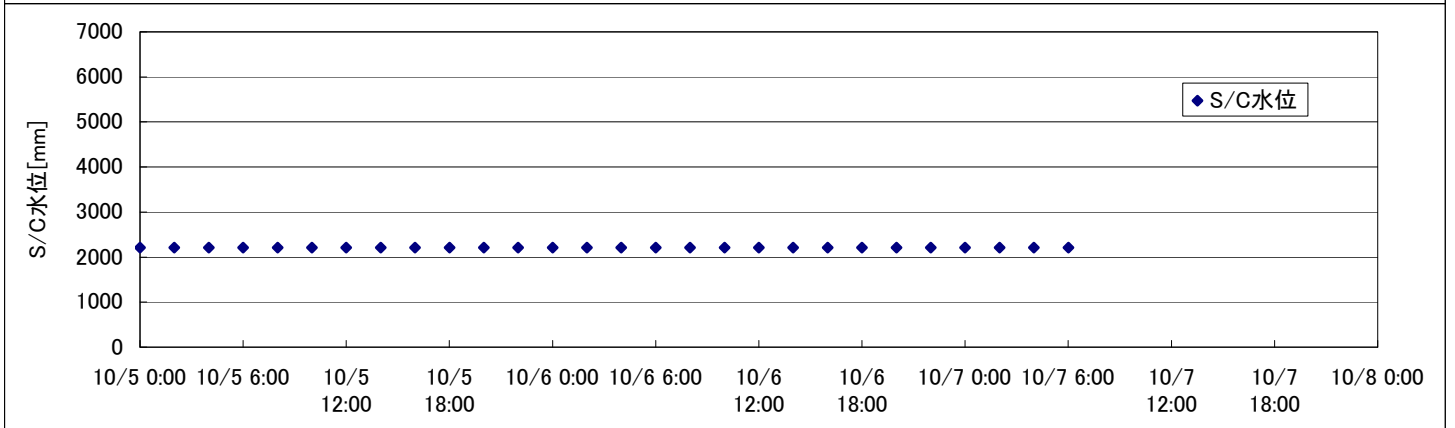
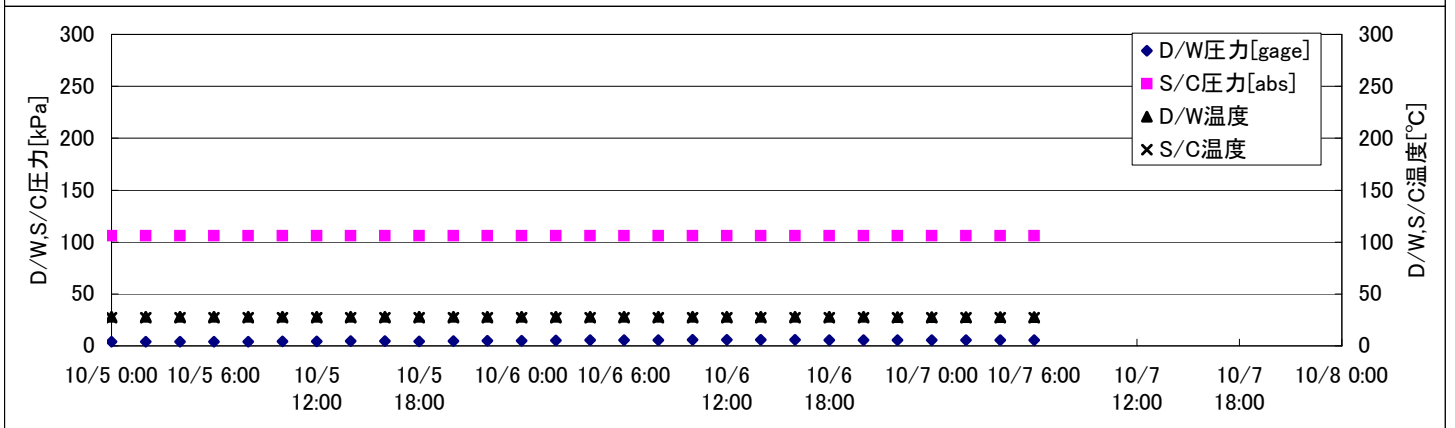
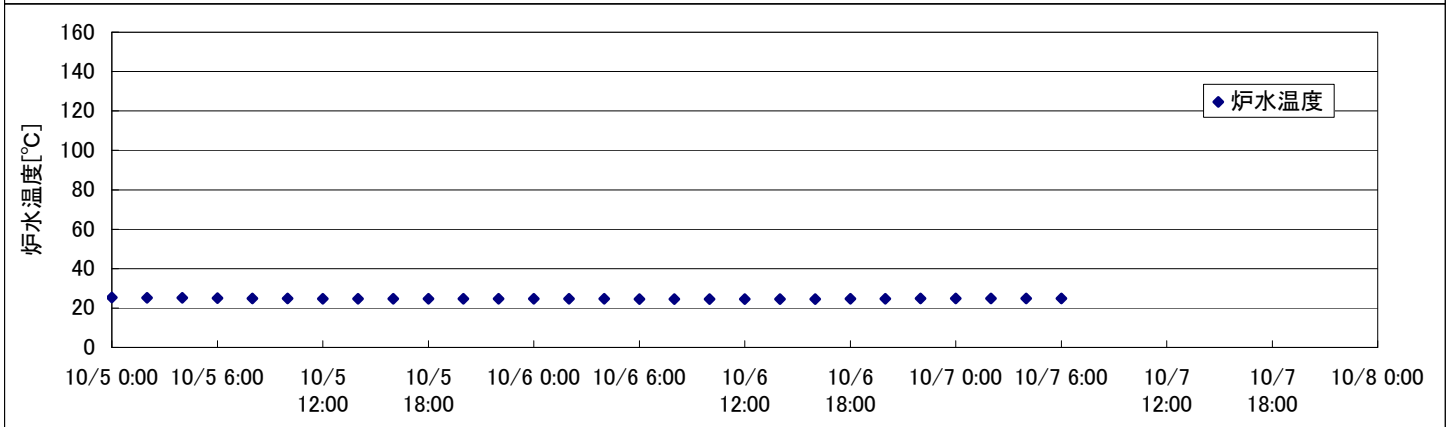
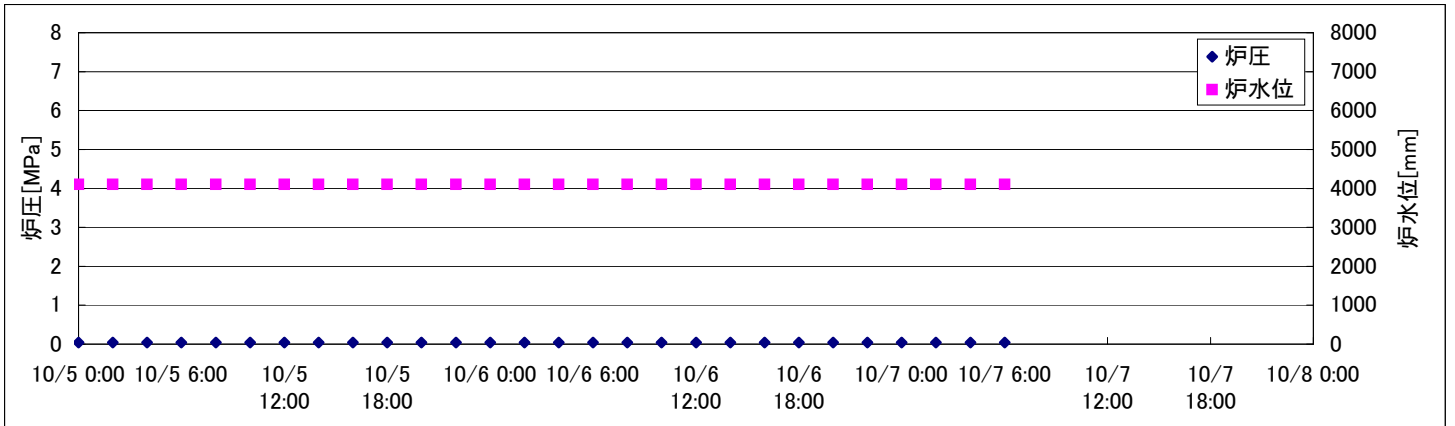
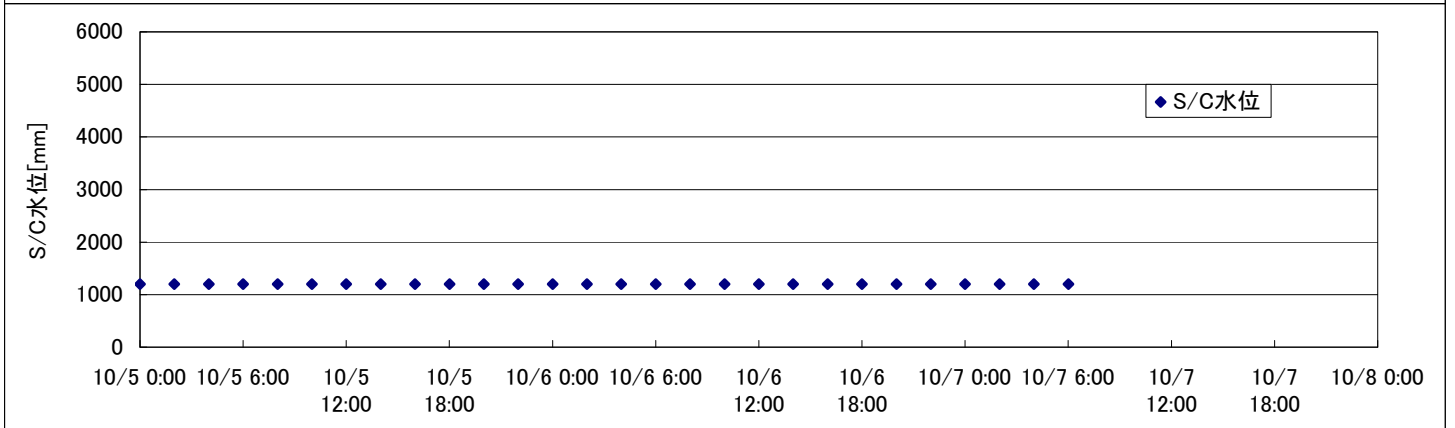
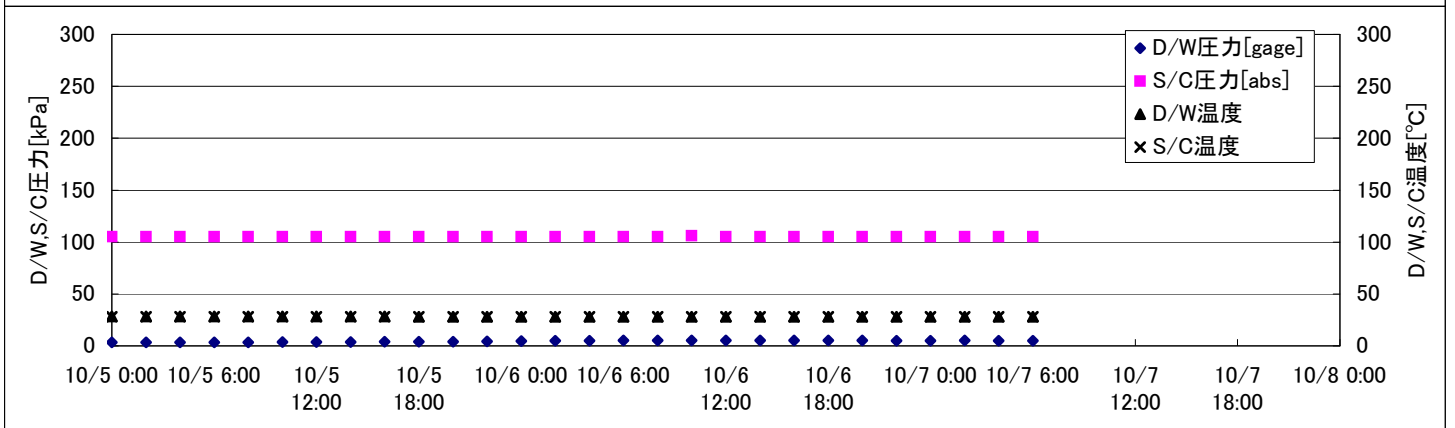
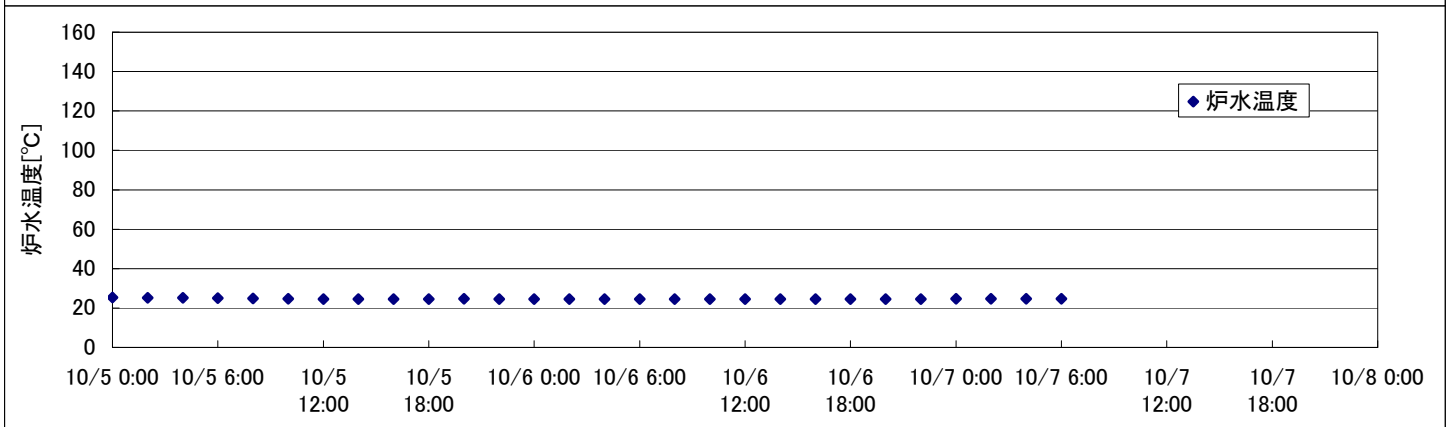
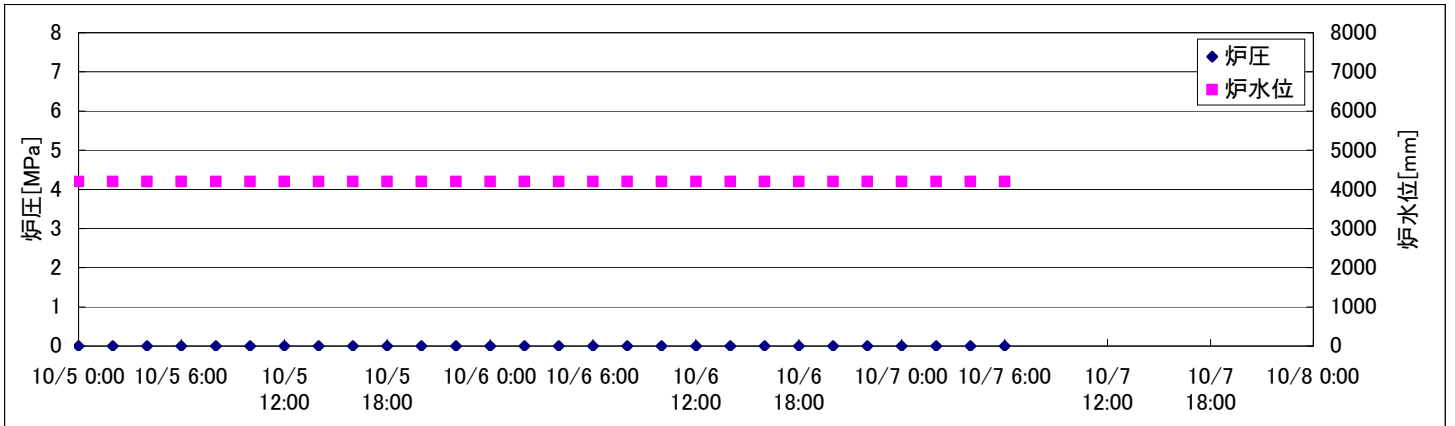


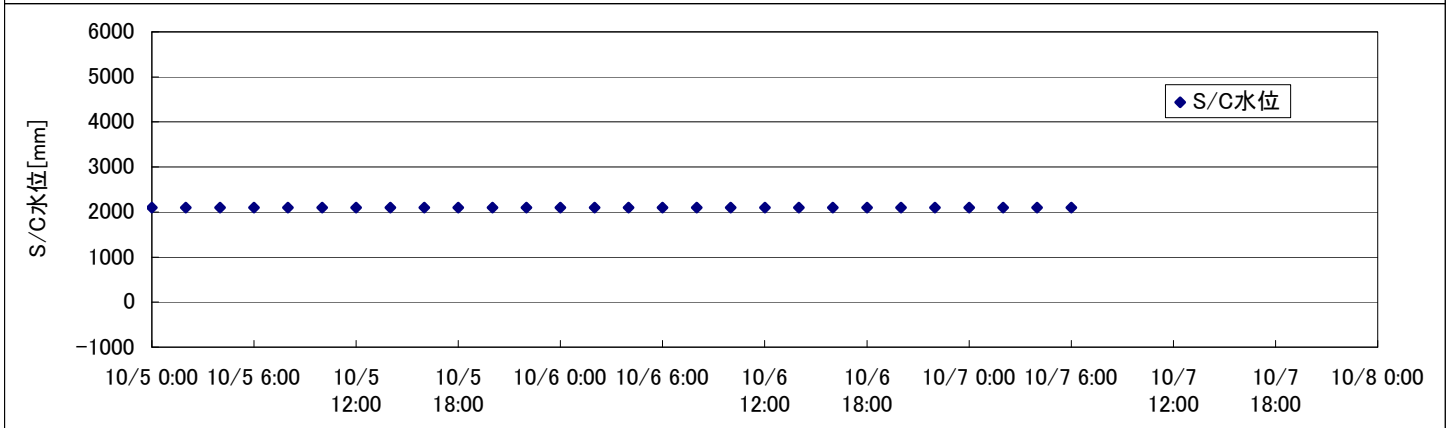
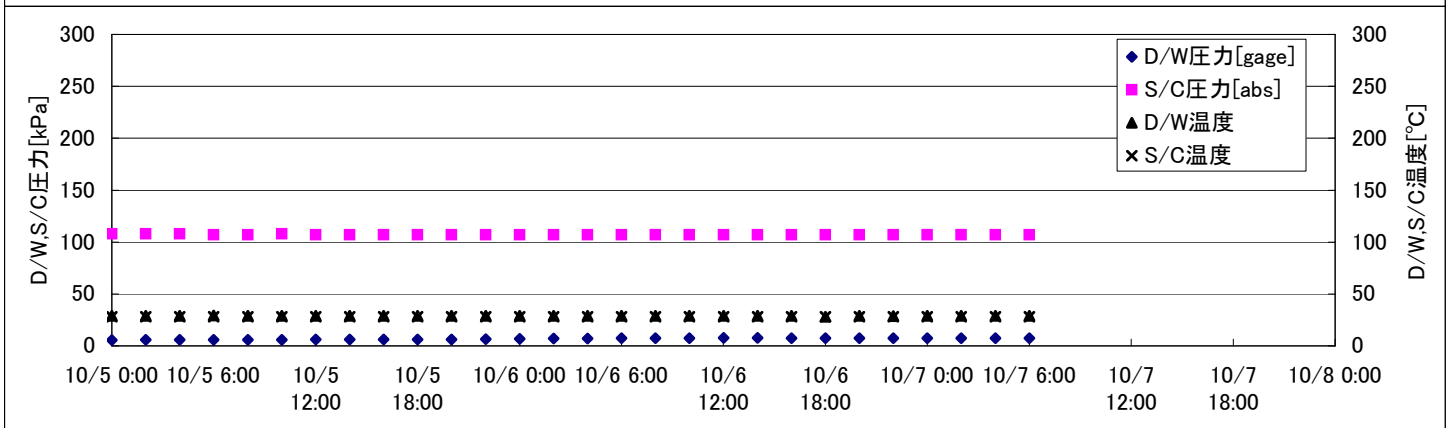
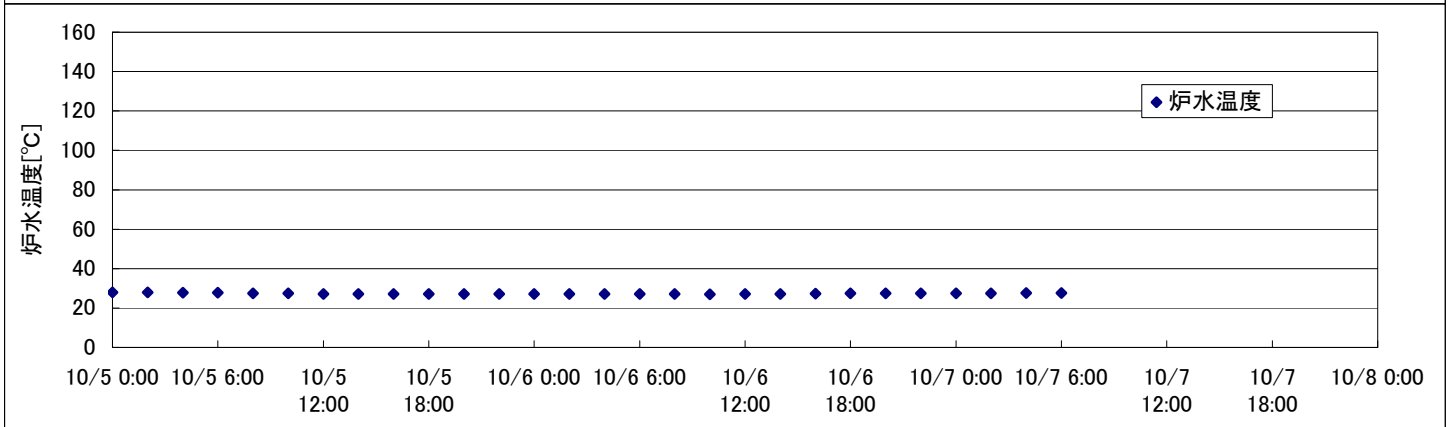
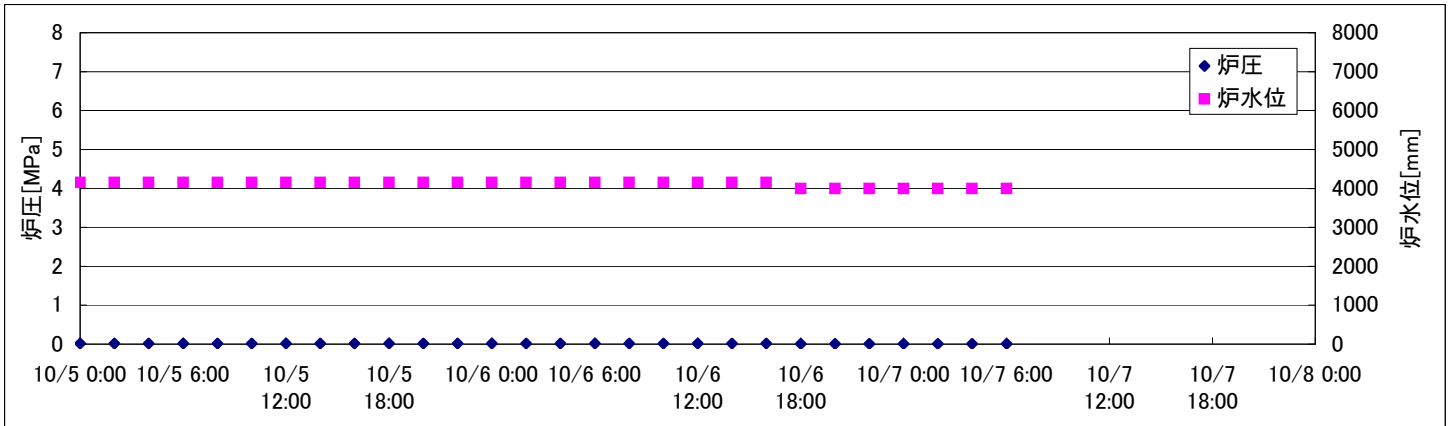
2F-1号機



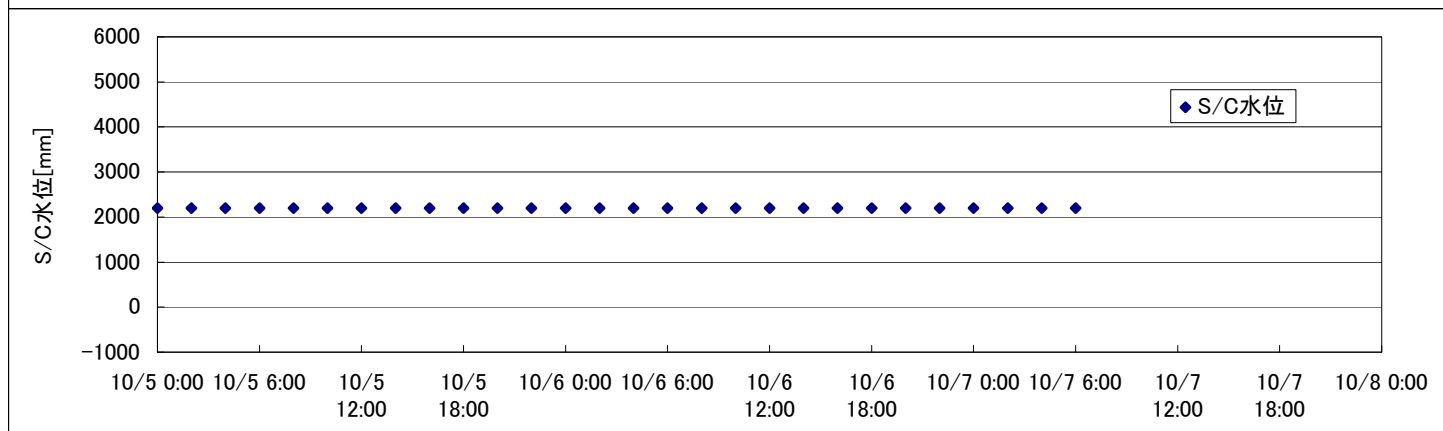
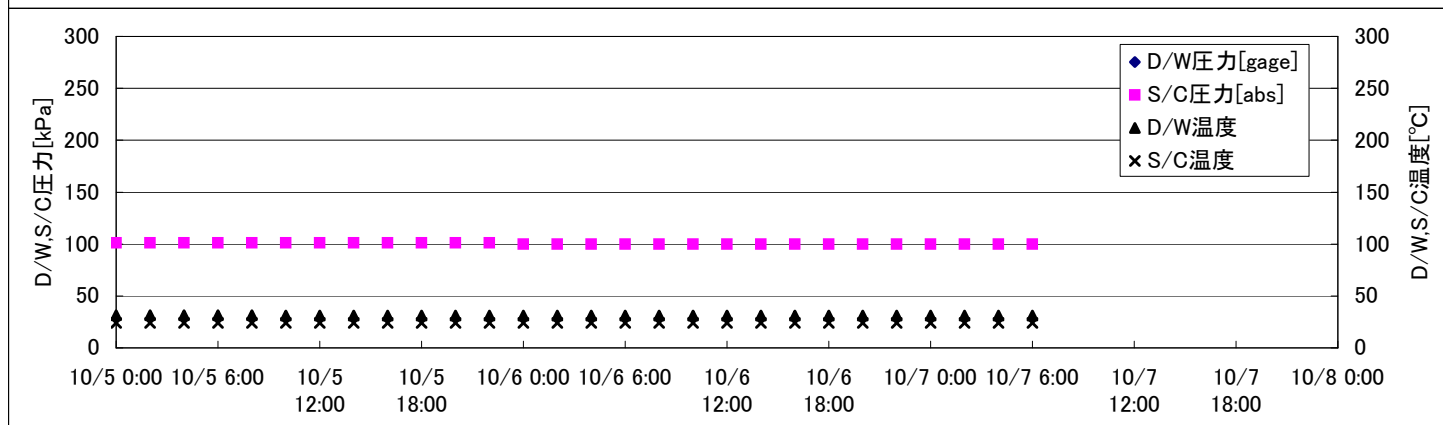
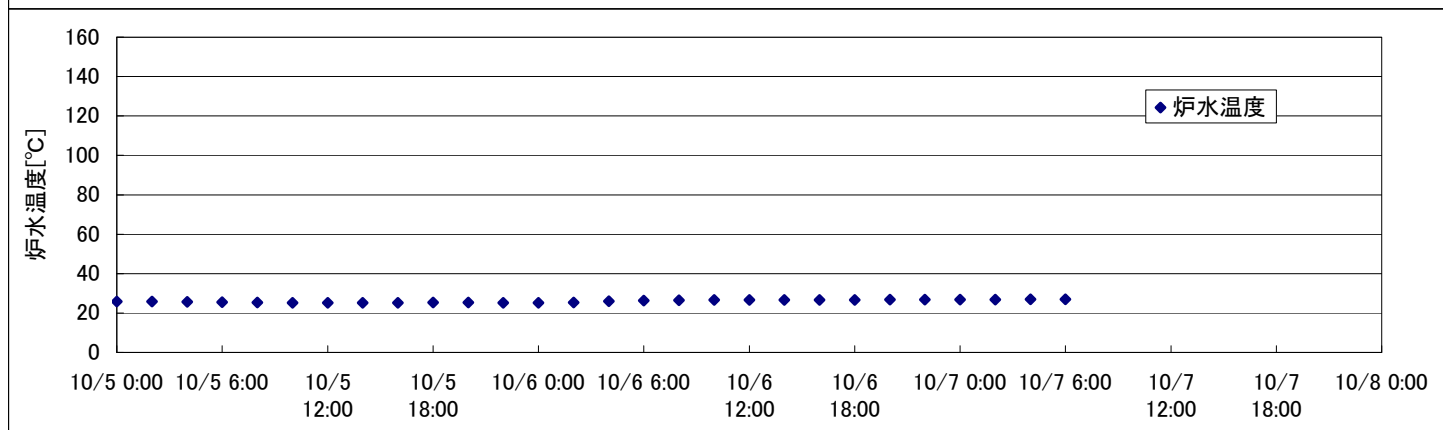
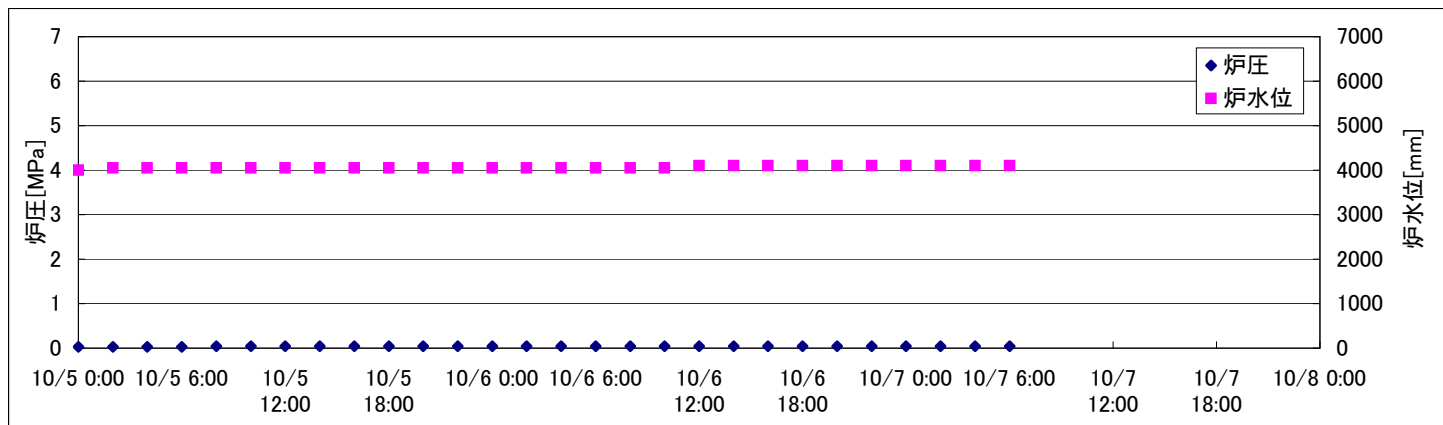
2F-2号機



2F-3号機



2F-4号機



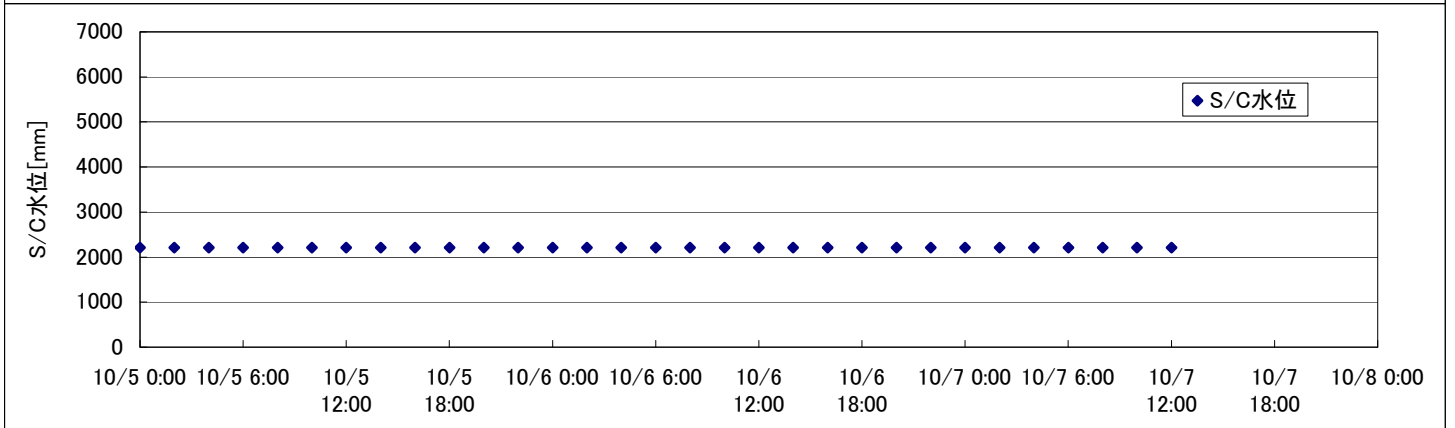
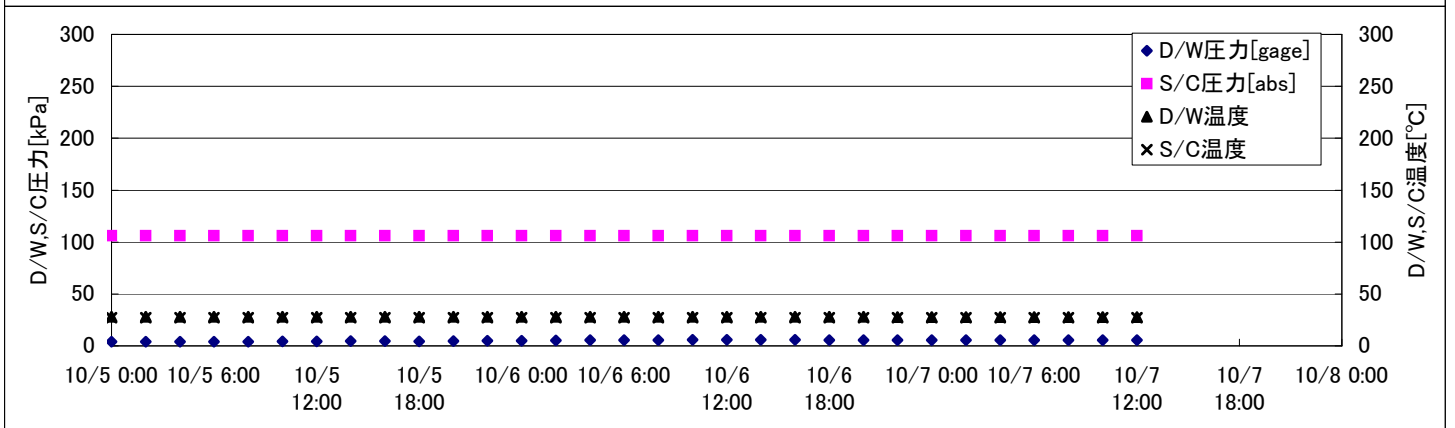
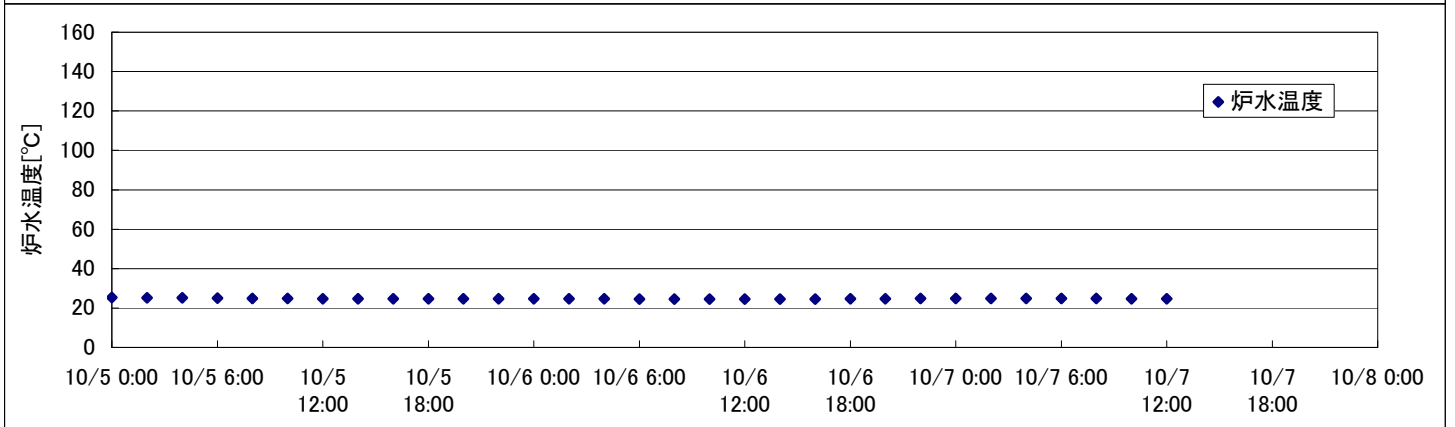
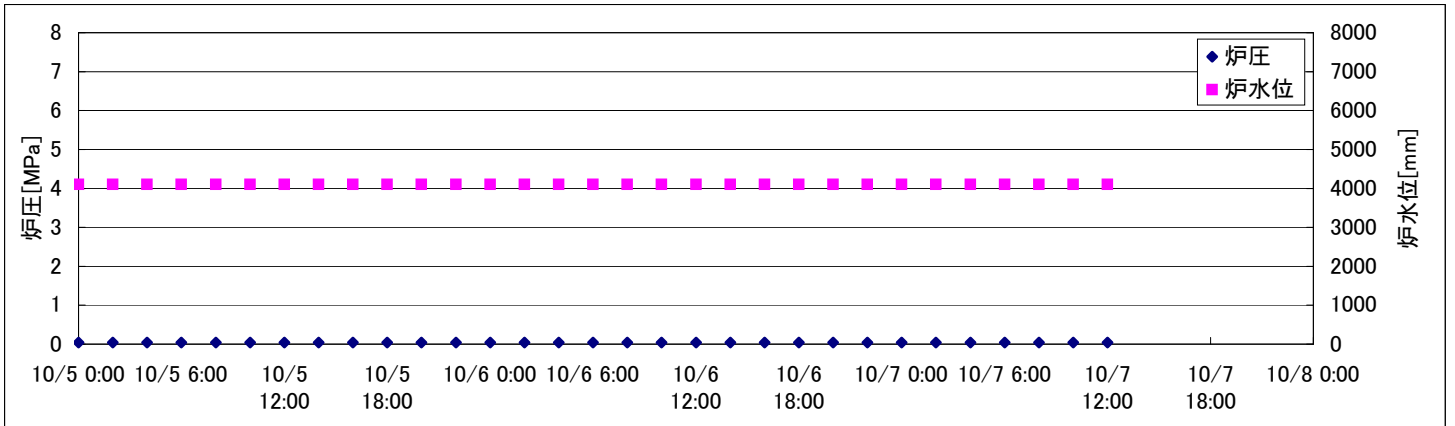
2F-4号機

※燃料頂部(TAF)からの水位=炉水位+4200[mm]

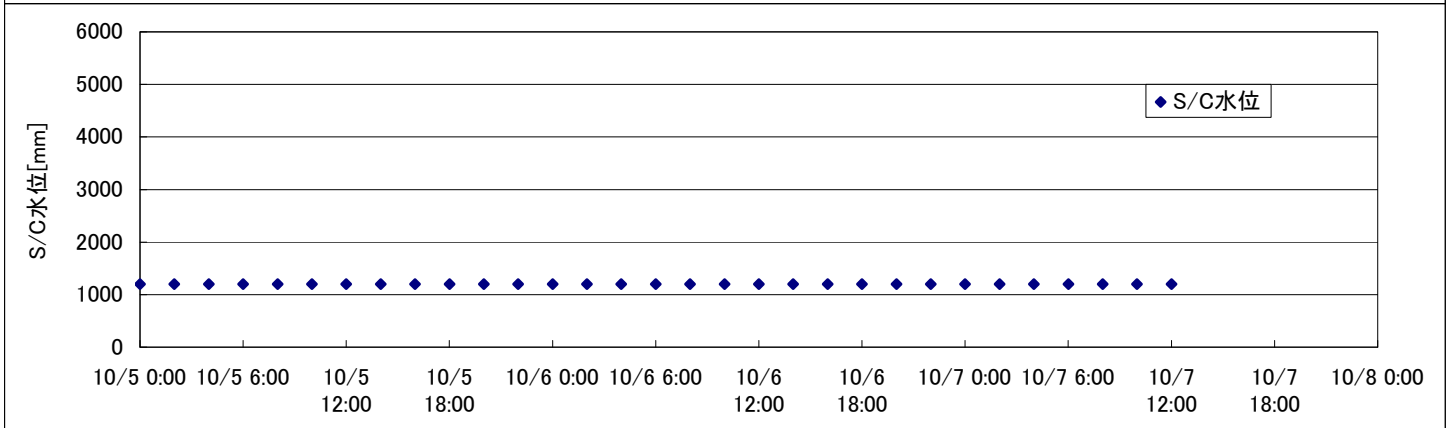
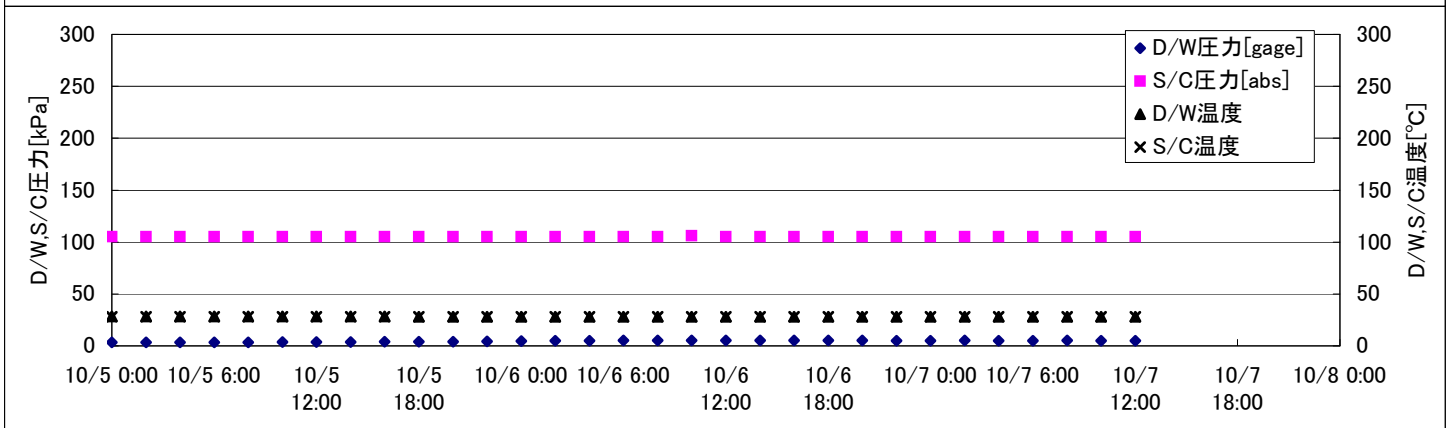
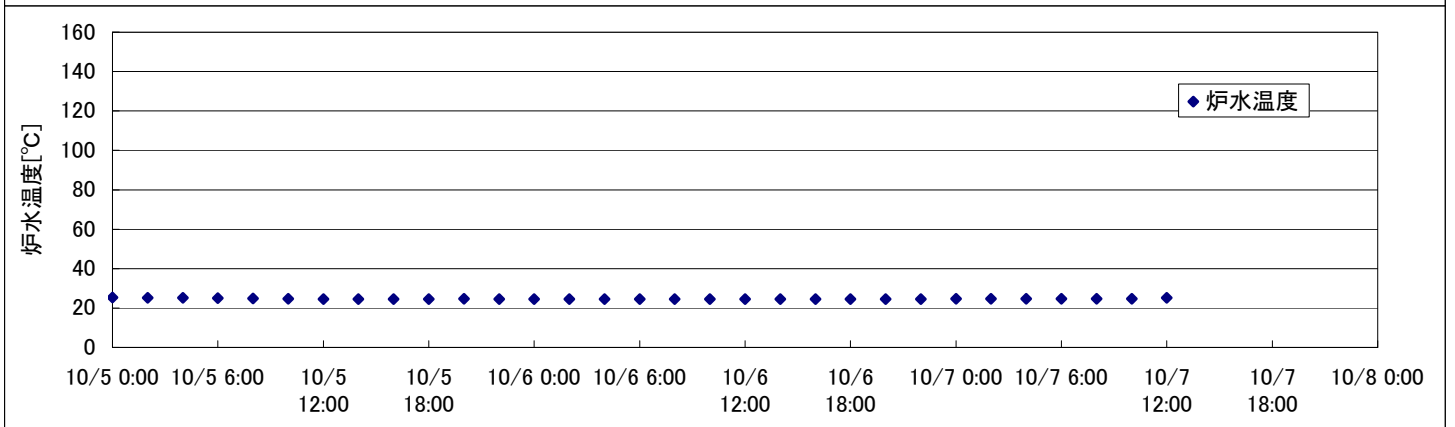
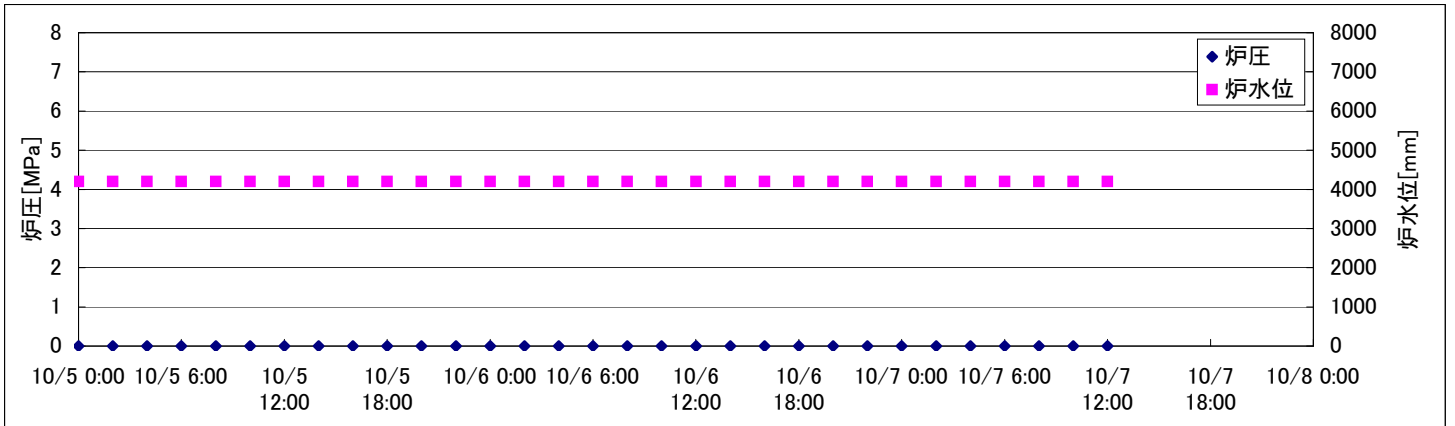
時間	炉圧 [MPa (gage)]	炉水位 [mm] 停止時	炉水温度[°C]	D/W圧力 [kPa(gage)]	D/W温度 [°C]	S/C圧力 [kPa(abs)]	S/C水位 [mm]	S/C温度 [°C]
2011/10/5 0:00	0.03	4000	25.8		31.3	101	2200	24
2011/10/5 2:00	0.03	4050	25.8		31.3	101	2200	24
2011/10/5 4:00	0.03	4050	25.7		31.3	101	2200	24
2011/10/5 6:00	0.03	4050	25.5		31.3	101	2200	24
2011/10/5 8:00	0.04	4050	25.4		31.3	101	2200	24
2011/10/5 10:00	0.04	4050	25.2		31.2	101	2200	24
2011/10/5 12:00	0.04	4050	25.2		31.2	101	2200	24
2011/10/5 14:00	0.04	4050	25.2		31.2	101	2200	24
2011/10/5 16:00	0.04	4050	25.1		31.2	101	2200	24
2011/10/5 18:00	0.04	4050	25.4		31.1	101	2200	24
2011/10/5 20:00	0.04	4050	25.3		31.2	101	2200	24
2011/10/5 22:00	0.04	4050	25.2		31.2	101	2200	24
2011/10/6 0:00	0.04	4050	25.1		31.2	100	2200	24
2011/10/6 2:00	0.04	4050	25.4		31.2	100	2200	24
2011/10/6 4:00	0.04	4050	26.0		31.2	100	2200	24
2011/10/6 6:00	0.04	4050	26.3		31.2	100	2200	24
2011/10/6 8:00	0.04	4050	26.5		31.2	100	2200	24
2011/10/6 10:00	0.04	4050	26.6		31.2	100	2200	24
2011/10/6 12:00	0.04	4100	26.6		31.1	100	2200	24
2011/10/6 14:00	0.04	4100	26.6		31.1	100	2200	24
2011/10/6 16:00	0.04	4100	26.7		31.0	100	2200	24
2011/10/6 18:00	0.04	4100	26.7		31.0	100	2200	24
2011/10/6 20:00	0.04	4100	26.8		31.0	100	2200	24
2011/10/6 22:00	0.04	4100	26.8		31.1	100	2200	24
2011/10/7 0:00	0.04	4100	26.8		31.0	100	2200	24
2011/10/7 2:00	0.04	4100	26.8		31.0	100	2200	24
2011/10/7 4:00	0.04	4100	26.9		31.0	100	2200	24
2011/10/7 6:00	0.04	4100	26.9		31.1	100	2200	24
2011/10/7 8:00								
2011/10/7 10:00								
2011/10/7 12:00								
2011/10/7 14:00								
2011/10/7 16:00								
2011/10/7 18:00								
2011/10/7 20:00								
2011/10/7 22:00								
2011/10/8 0:00								

D/W圧力について
 ・パーソナルエアロックドア開放中であるため、9/6 10:00 より記載せず

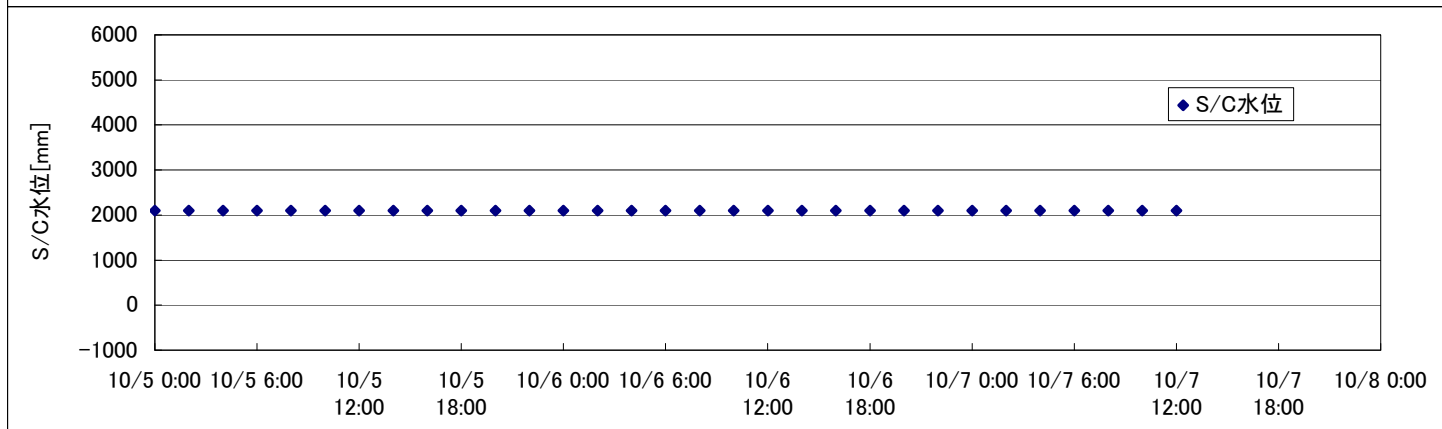
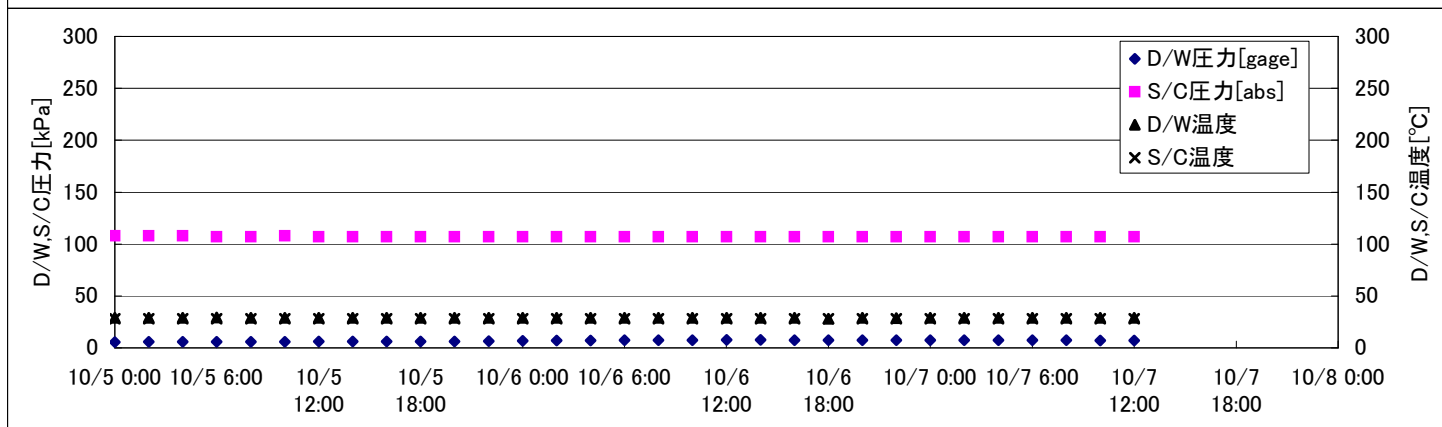
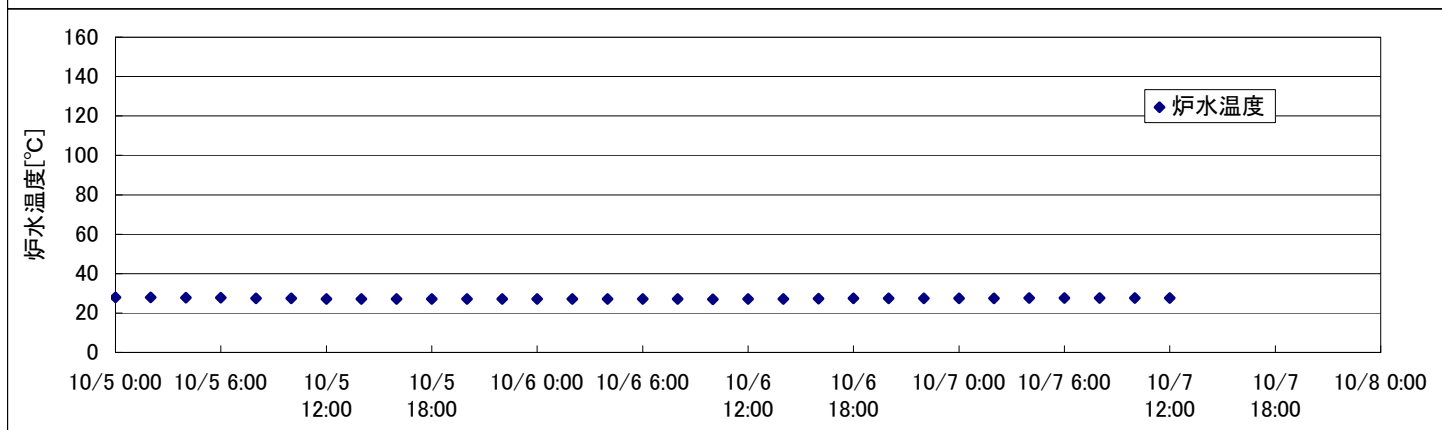
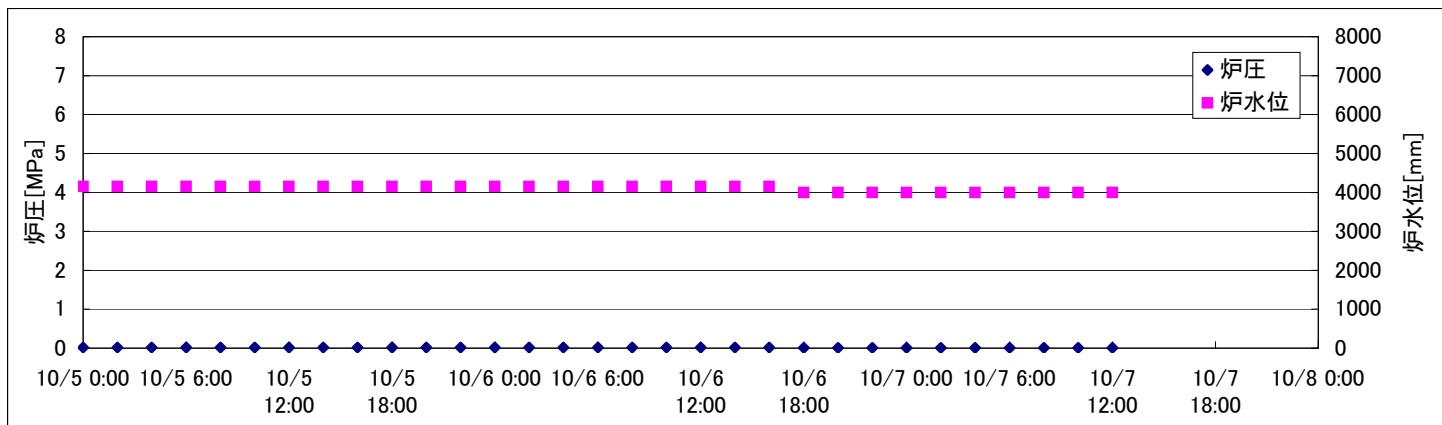
2F-1号機



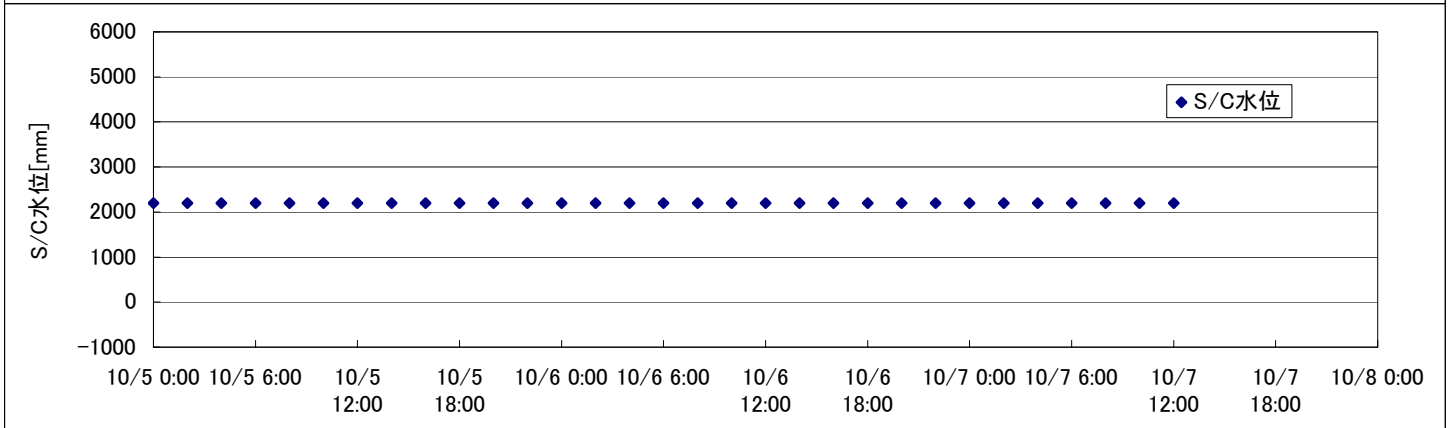
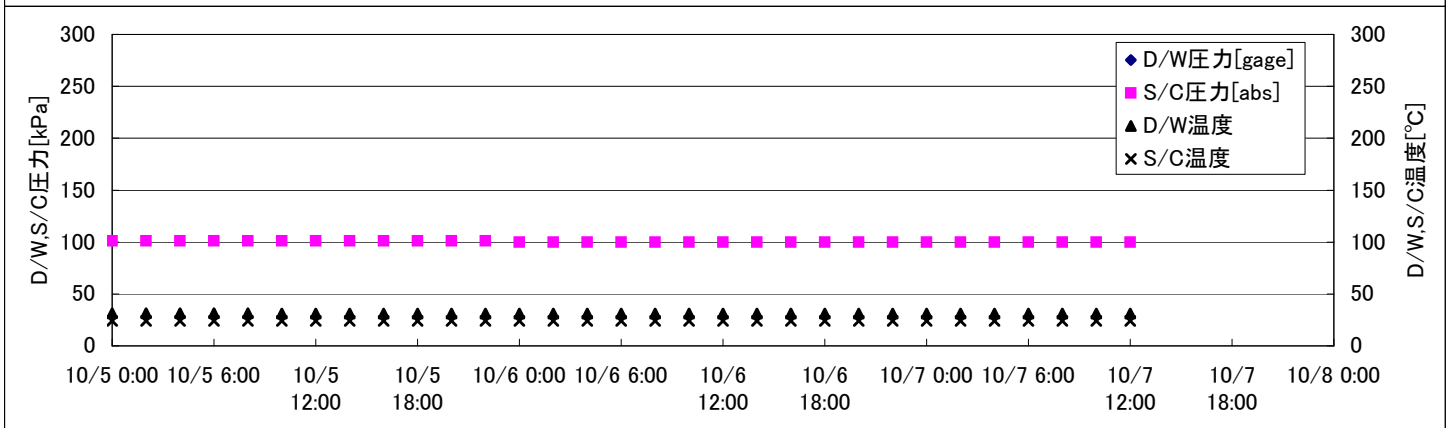
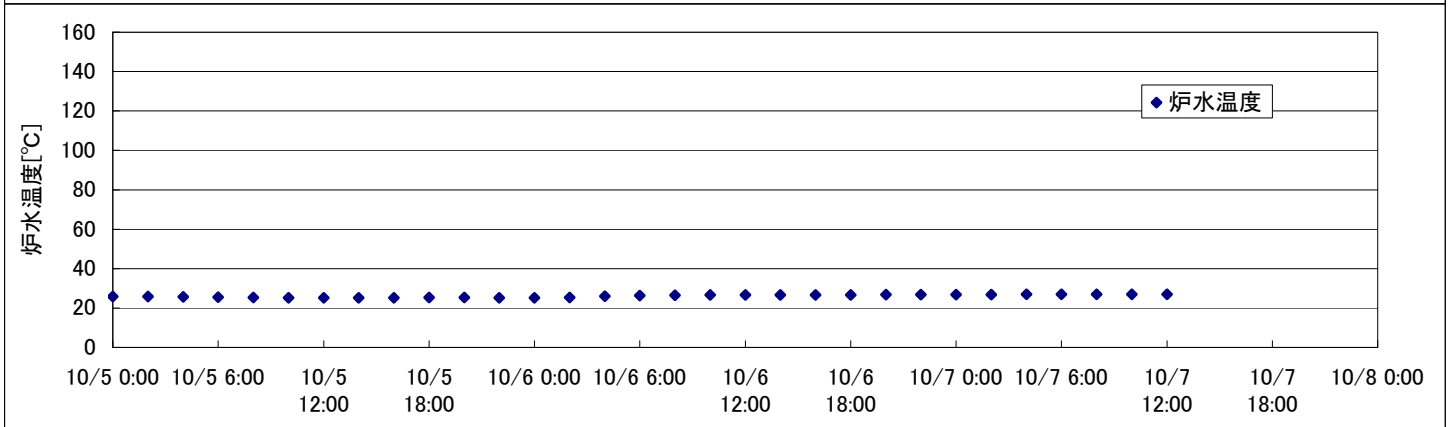
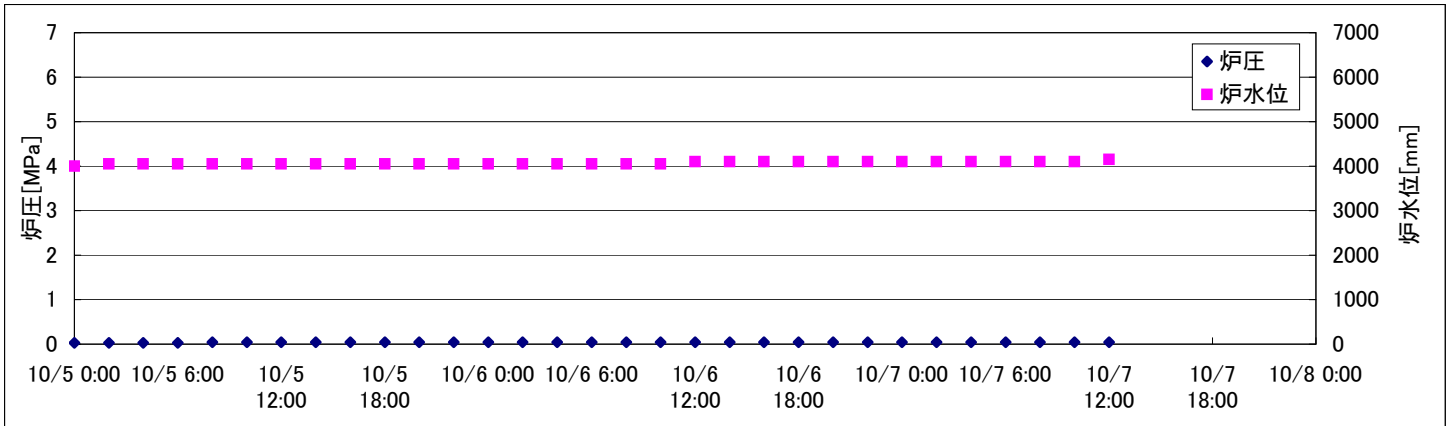
2F-2号機



2F-3号機



2F-4号機



2F-2号機

※燃料頂部(TAF)からの水位=炉水位+4200[mm]

時間	炉圧 [MPa (gage)]	炉水位 [mm] 停止時	炉水温度[°C]	D/W圧力 [kPa(gage)]	D/W温度 [°C]	S/C圧力 [kPa(abs)]	S/C水位 [mm]	S/C温度 [°C]
2011/10/5 0:00	0.00	4200	25.3	3	28.3	105	1200	28
2011/10/5 2:00	0.00	4200	25.2	4	28.3	105	1200	28
2011/10/5 4:00	0.00	4200	25.1	4	28.3	105	1200	28
2011/10/5 6:00	0.00	4200	25.0	4	28.3	105	1200	28
2011/10/5 8:00	0.00	4200	24.8	4	28.3	105	1200	28
2011/10/5 10:00	0.00	4200	24.7	4	28.3	105	1200	28
2011/10/5 12:00	0.00	4200	24.6	4	28.3	105	1200	28
2011/10/5 14:00	0.00	4200	24.6	4	28.3	105	1200	28
2011/10/5 16:00	0.00	4200	24.6	4	28.3	105	1200	28
2011/10/5 18:00	0.00	4200	24.6	4	28.1	105	1200	28
2011/10/5 20:00	0.00	4200	24.7	4	28.1	105	1200	28
2011/10/5 22:00	0.00	4200	24.6	4	28.1	105	1200	28
2011/10/6 0:00	0.00	4200	24.6	5	28.1	105	1200	28
2011/10/6 2:00	0.00	4200	24.6	5	28.1	105	1200	28
2011/10/6 4:00	0.00	4200	24.6	5	28.1	105	1200	28
2011/10/6 6:00	0.00	4200	24.5	5	28.1	105	1200	28
2011/10/6 8:00	0.00	4200	24.5	5	28.1	105	1200	28
2011/10/6 10:00	0.00	4200	24.5	5	28.1	106	1200	28
2011/10/6 12:00	0.00	4200	24.5	5	28.0	105	1200	28
2011/10/6 14:00	0.00	4200	24.6	5	28.0	105	1200	28
2011/10/6 16:00	0.00	4200	24.6	5	28.1	105	1200	28
2011/10/6 18:00	0.00	4200	24.6	5	28.1	105	1200	28
2011/10/6 20:00	0.00	4200	24.6	5	28.1	105	1200	28
2011/10/6 22:00	0.00	4200	24.6	5	28.0	105	1200	28
2011/10/7 0:00	0.00	4200	24.7	5	28.0	105	1200	28
2011/10/7 2:00	0.00	4200	24.7	5	28.0	105	1200	28
2011/10/7 4:00	0.00	4200	24.7	5	28.0	105	1200	28
2011/10/7 6:00	0.00	4200	24.7	5	28.0	105	1200	28
2011/10/7 8:00	0.00	4200	24.7	5	28.0	105	1200	28
2011/10/7 10:00	0.00	4200	24.7	5	28.0	105	1200	28
2011/10/7 12:00	0.00	4200	25.2	5	28.0	105	1200	28
2011/10/7 14:00								
2011/10/7 16:00								
2011/10/7 18:00								
2011/10/7 20:00								
2011/10/7 22:00								
2011/10/8 0:00								

10/7 11:25 RHRポンプ(B) 停止
11:42 RHRポンプ(A) 起動

2F-4号機

※燃料頂部(TAF)からの水位=炉水位+4200[mm]

時間	炉圧 [MPa (gage)]	炉水位 [mm] 停止時	炉水温度[°C]	D/W圧力 [kPa(gage)]	D/W温度 [°C]	S/C圧力 [kPa(abs)]	S/C水位 [mm]	S/C温度 [°C]
2011/10/5 0:00	0.03	4000	25.8		31.3	101	2200	24
2011/10/5 2:00	0.03	4050	25.8		31.3	101	2200	24
2011/10/5 4:00	0.03	4050	25.7		31.3	101	2200	24
2011/10/5 6:00	0.03	4050	25.5		31.3	101	2200	24
2011/10/5 8:00	0.04	4050	25.4		31.3	101	2200	24
2011/10/5 10:00	0.04	4050	25.2		31.2	101	2200	24
2011/10/5 12:00	0.04	4050	25.2		31.2	101	2200	24
2011/10/5 14:00	0.04	4050	25.2		31.2	101	2200	24
2011/10/5 16:00	0.04	4050	25.1		31.2	101	2200	24
2011/10/5 18:00	0.04	4050	25.4		31.1	101	2200	24
2011/10/5 20:00	0.04	4050	25.3		31.2	101	2200	24
2011/10/5 22:00	0.04	4050	25.2		31.2	101	2200	24
2011/10/6 0:00	0.04	4050	25.1		31.2	100	2200	24
2011/10/6 2:00	0.04	4050	25.4		31.2	100	2200	24
2011/10/6 4:00	0.04	4050	26.0		31.2	100	2200	24
2011/10/6 6:00	0.04	4050	26.3		31.2	100	2200	24
2011/10/6 8:00	0.04	4050	26.5		31.2	100	2200	24
2011/10/6 10:00	0.04	4050	26.6		31.2	100	2200	24
2011/10/6 12:00	0.04	4100	26.6		31.1	100	2200	24
2011/10/6 14:00	0.04	4100	26.6		31.1	100	2200	24
2011/10/6 16:00	0.04	4100	26.7		31.0	100	2200	24
2011/10/6 18:00	0.04	4100	26.7		31.0	100	2200	24
2011/10/6 20:00	0.04	4100	26.8		31.0	100	2200	24
2011/10/6 22:00	0.04	4100	26.8		31.1	100	2200	24
2011/10/7 0:00	0.04	4100	26.8		31.0	100	2200	24
2011/10/7 2:00	0.04	4100	26.8		31.0	100	2200	24
2011/10/7 4:00	0.04	4100	26.9		31.0	100	2200	24
2011/10/7 6:00	0.04	4100	26.9		31.1	100	2200	24
2011/10/7 8:00	0.04	4100	26.9		31.1	100	2200	24
2011/10/7 10:00	0.04	4100	26.9		31.0	100	2200	24
2011/10/7 12:00	0.04	4150	27.0		31.0	100	2200	24
2011/10/7 14:00								
2011/10/7 16:00								
2011/10/7 18:00								
2011/10/7 20:00								
2011/10/7 22:00								
2011/10/8 0:00								

D/W圧力について
 ・パーソナルエアロックドア開放中であるため、9/6 10:00 より記載せず