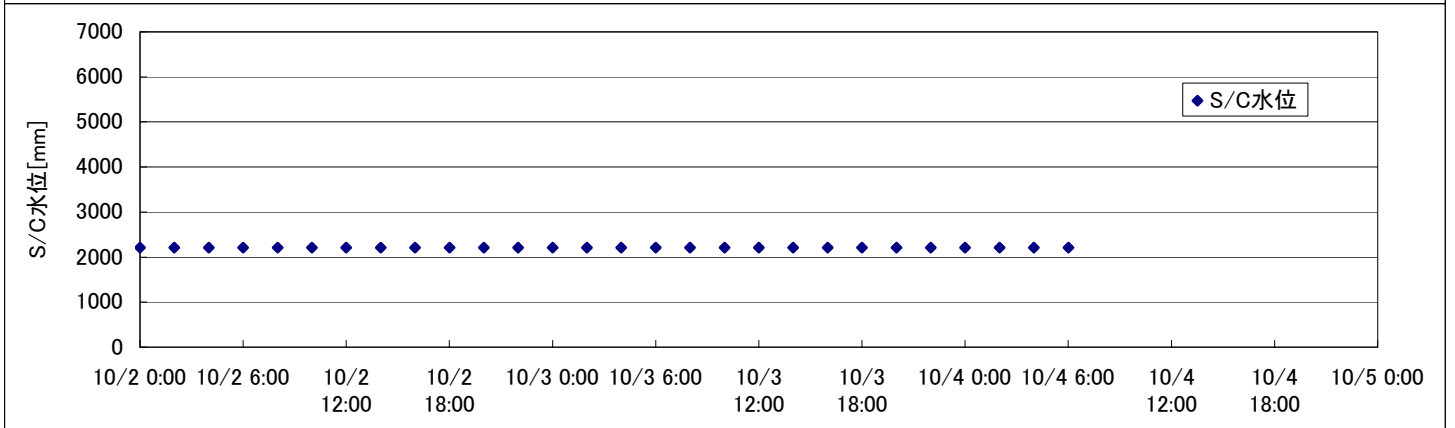
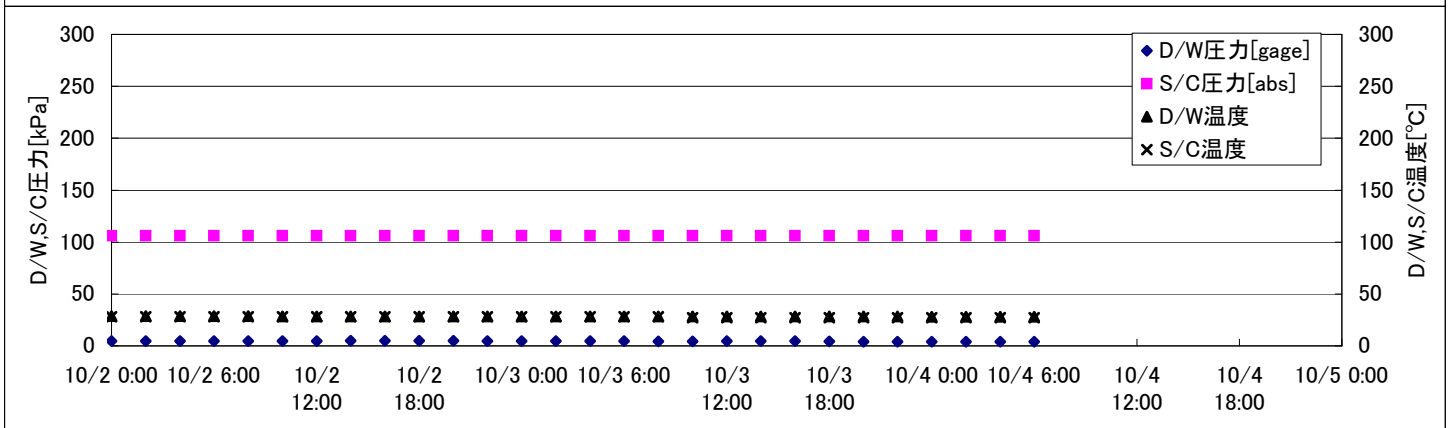
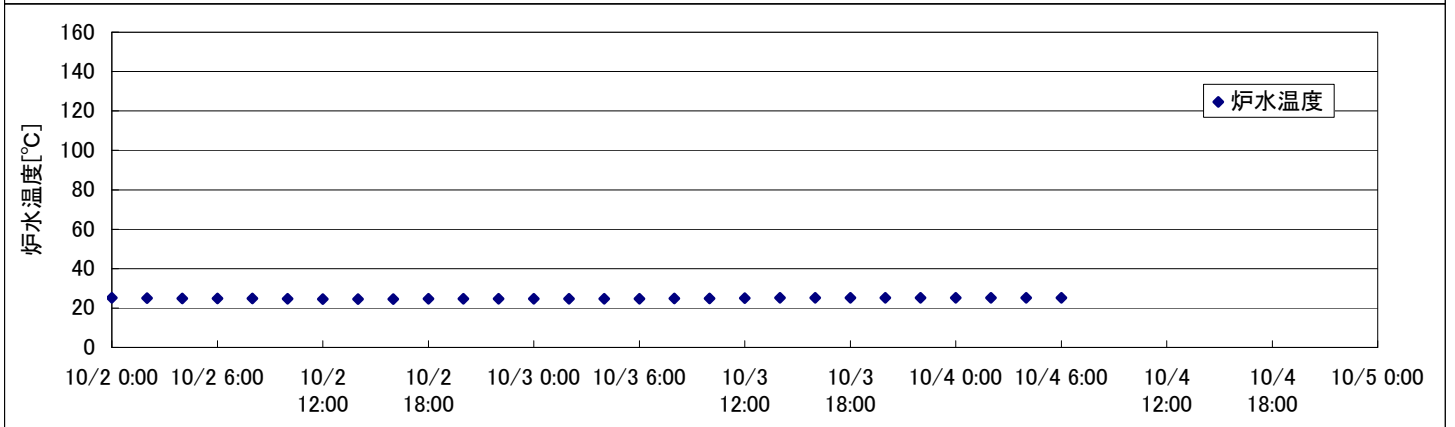
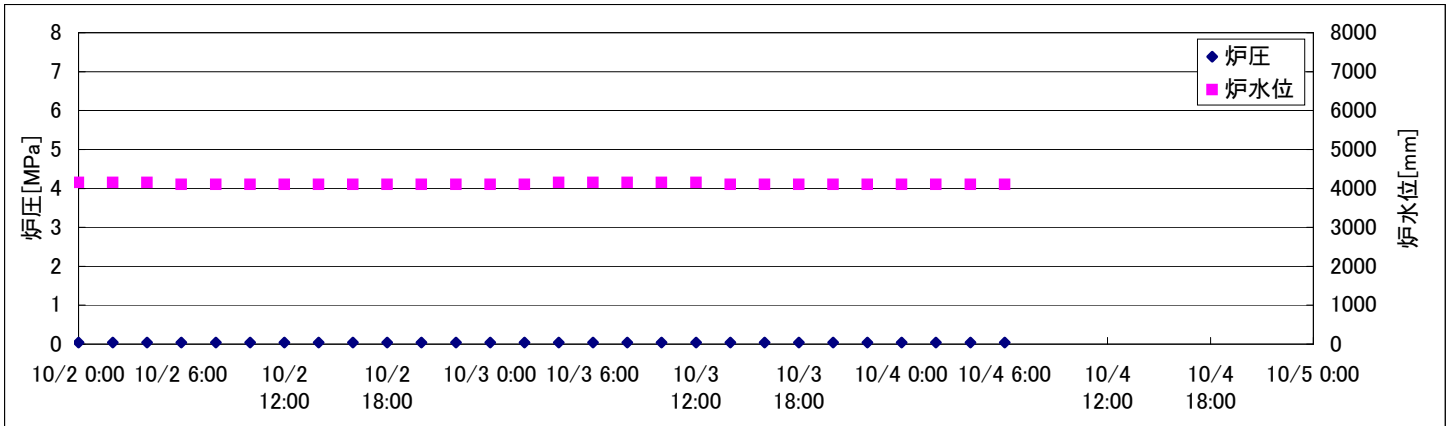
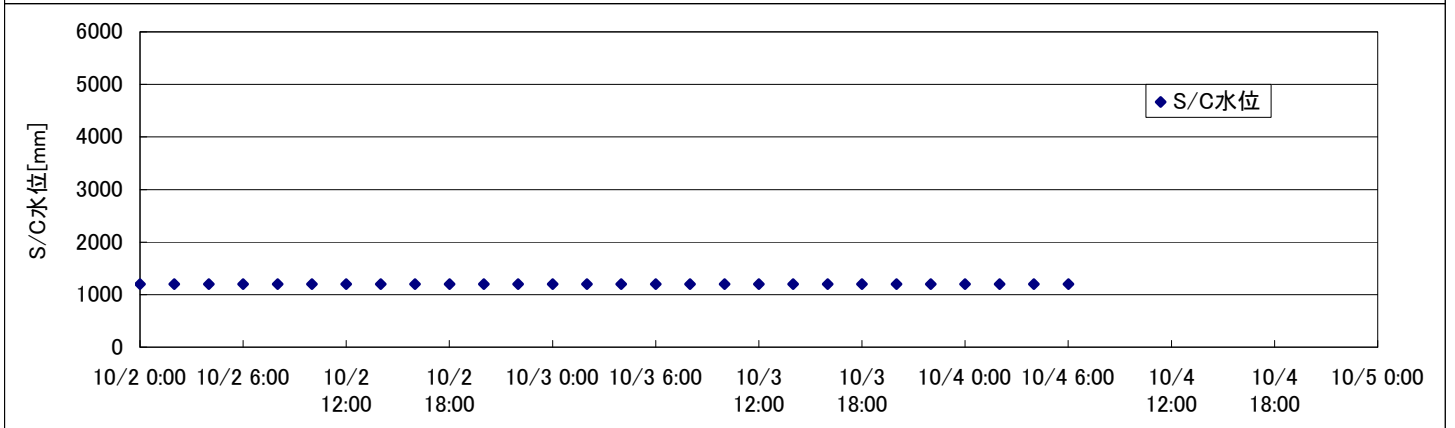
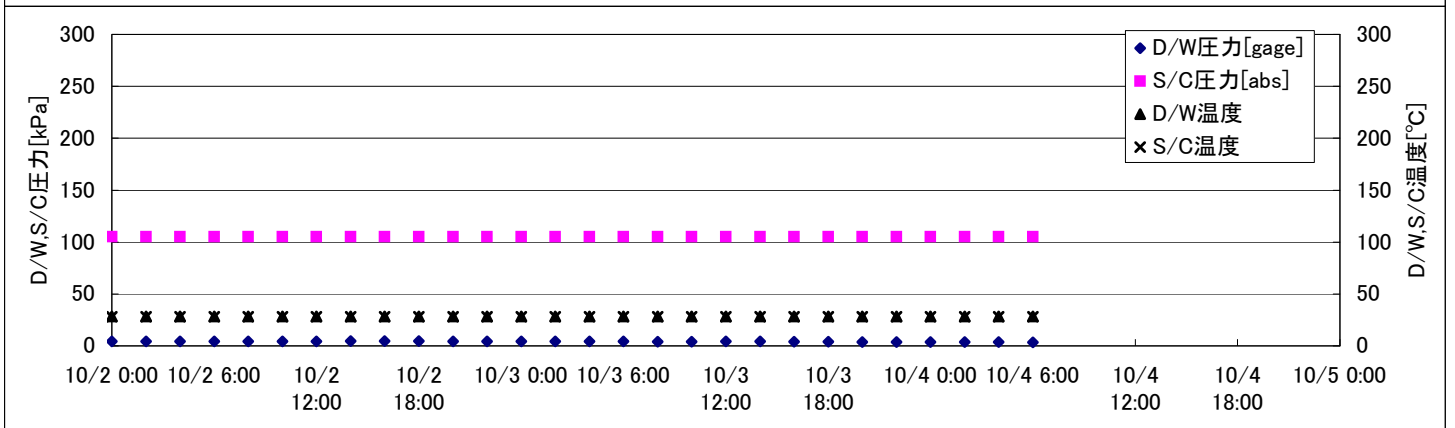
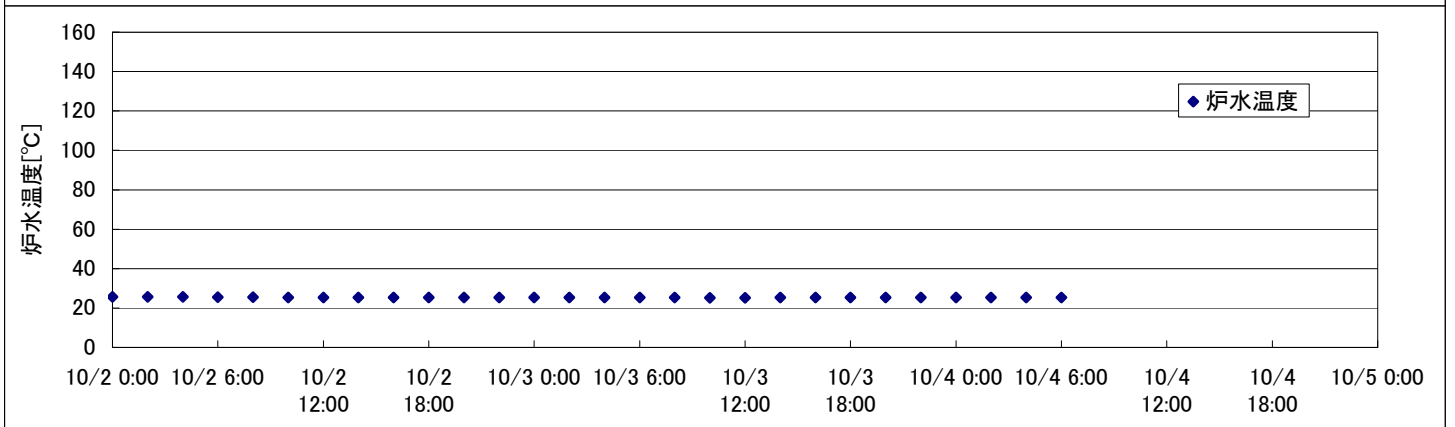
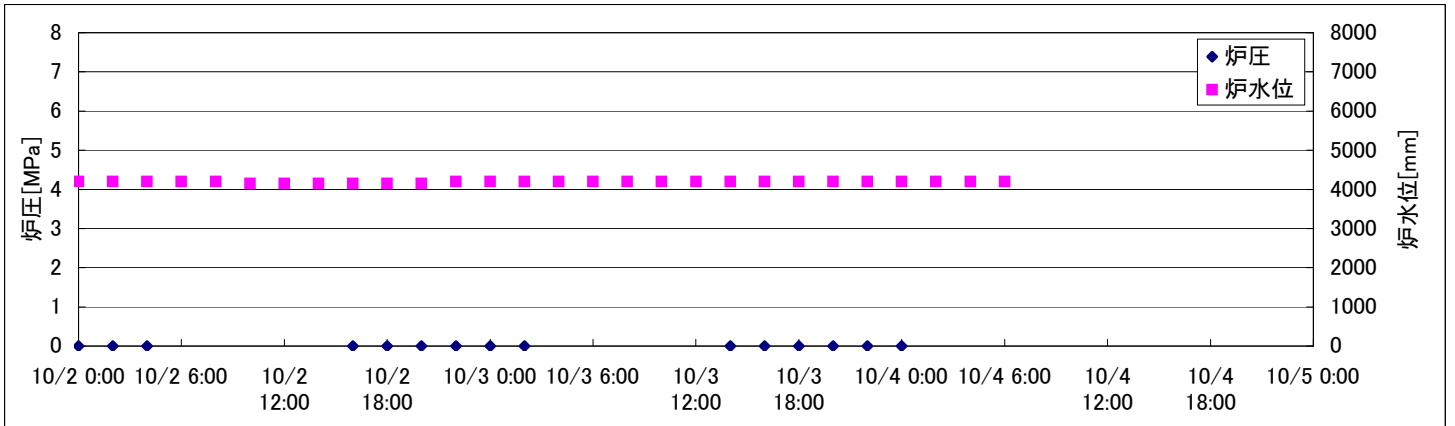


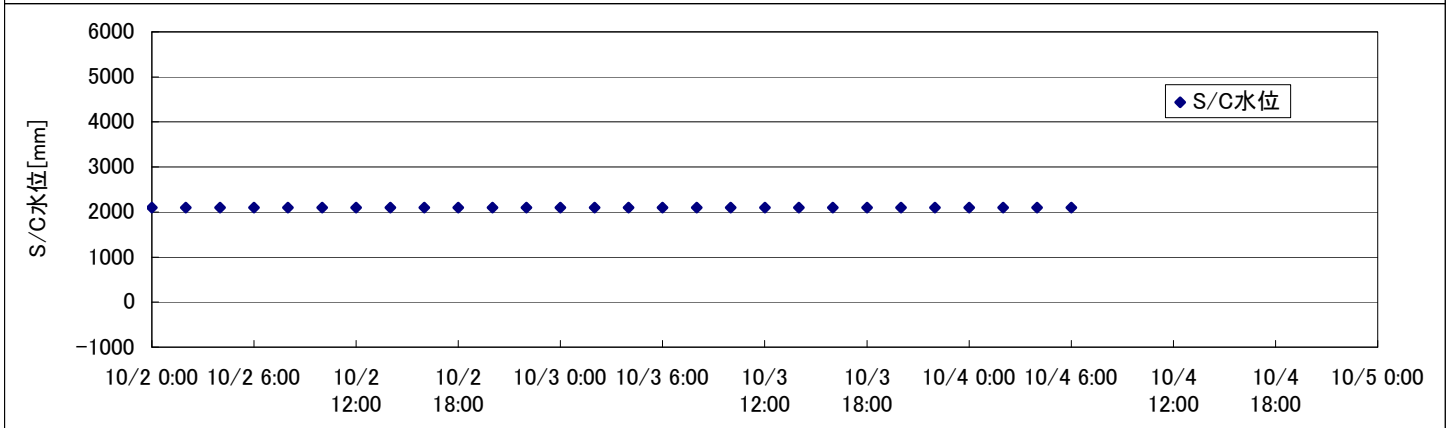
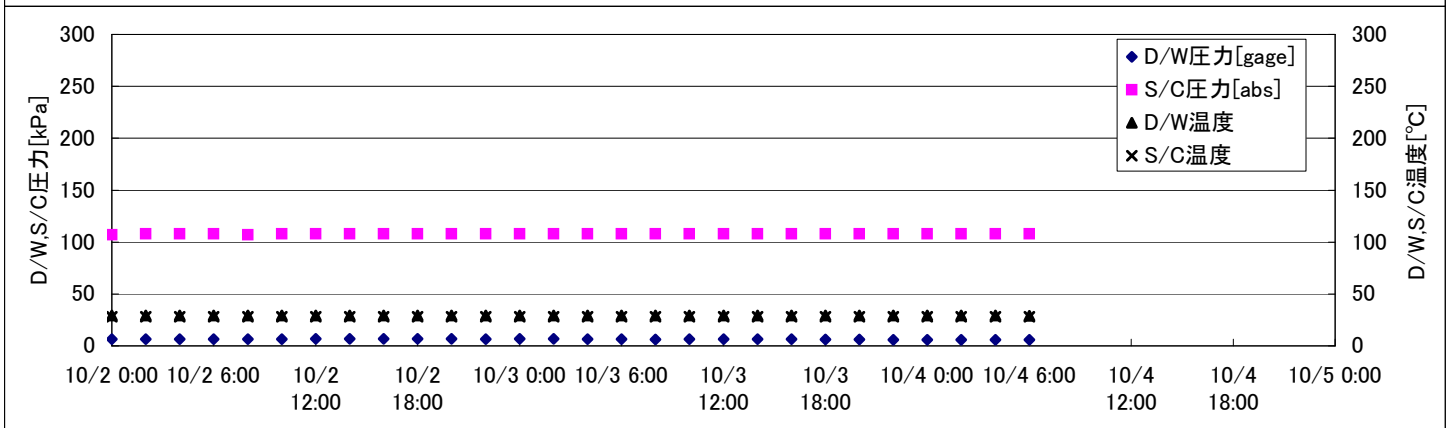
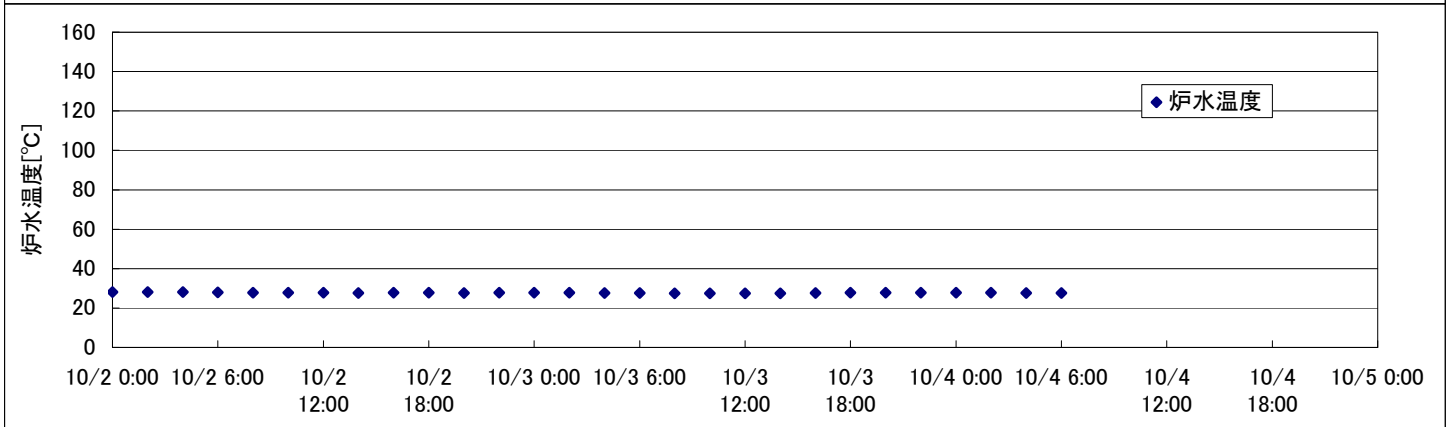
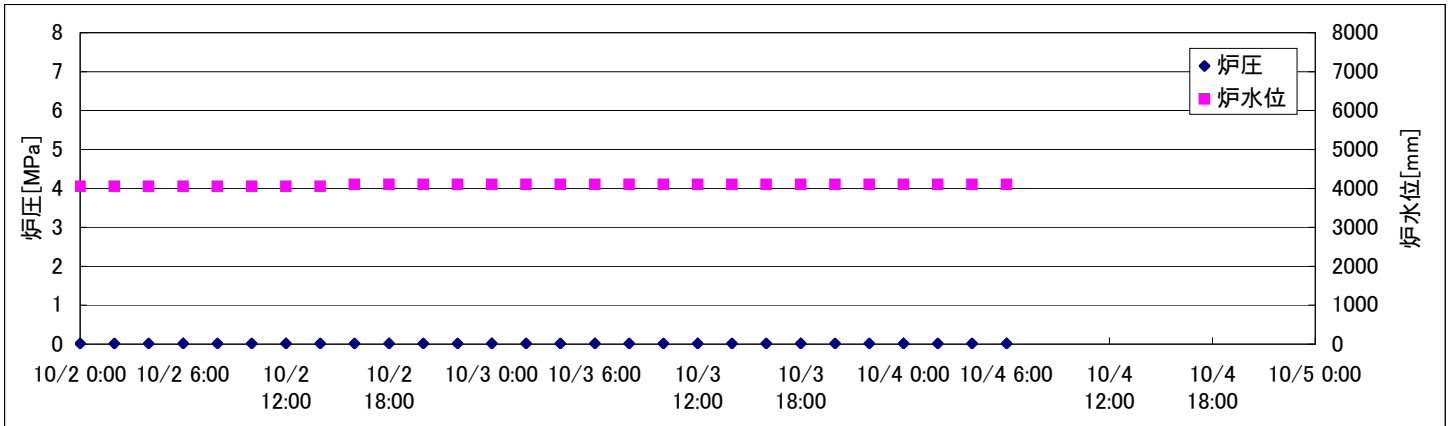
2F-1号機



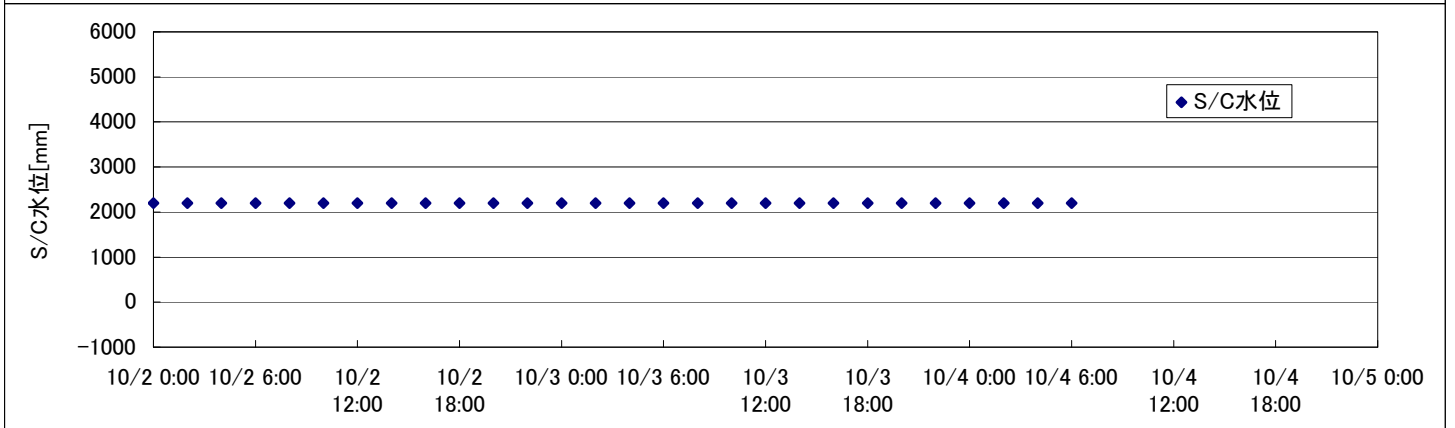
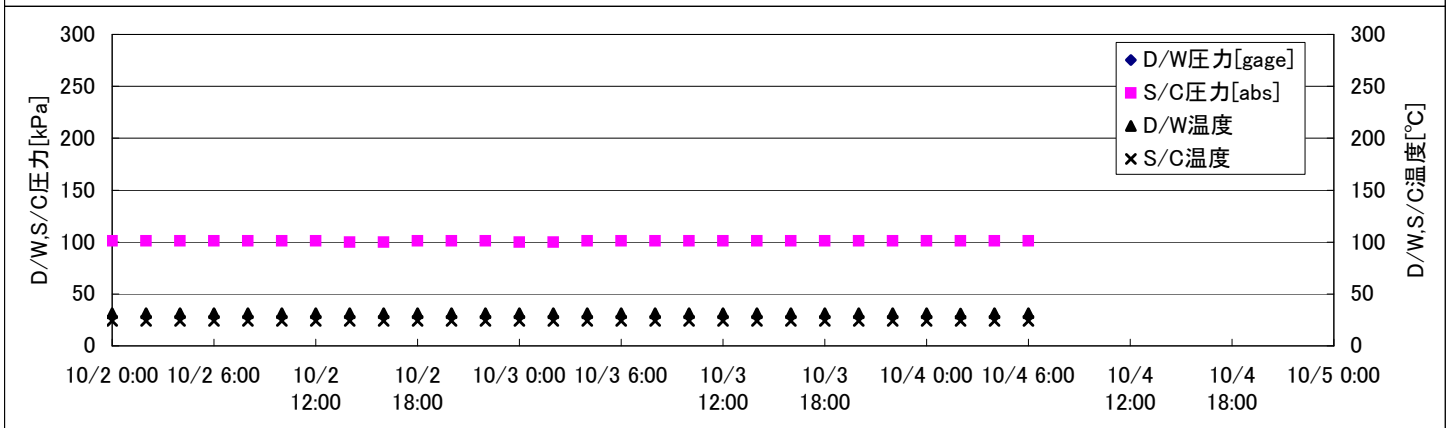
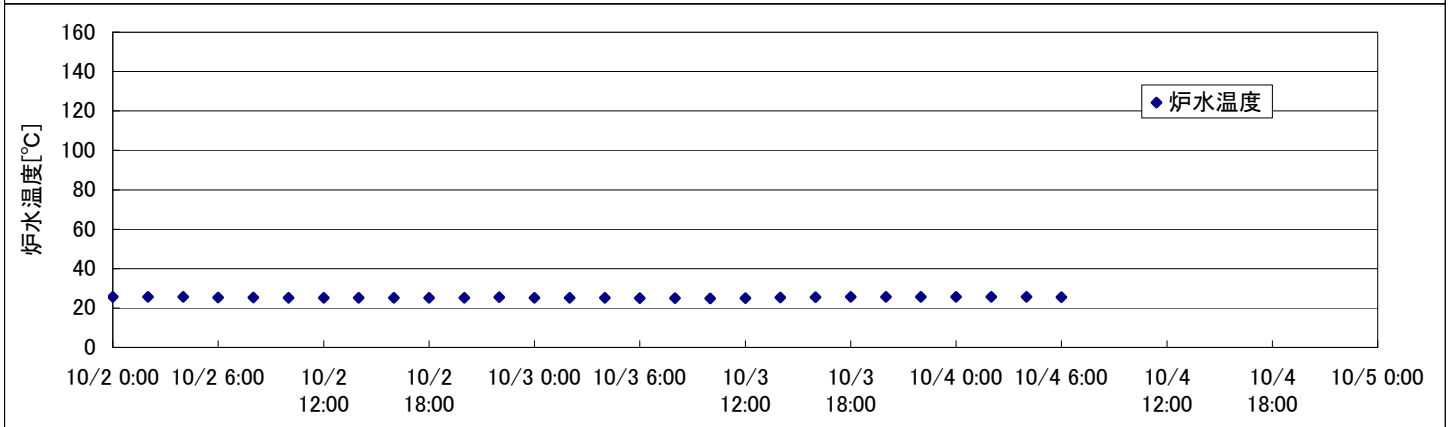
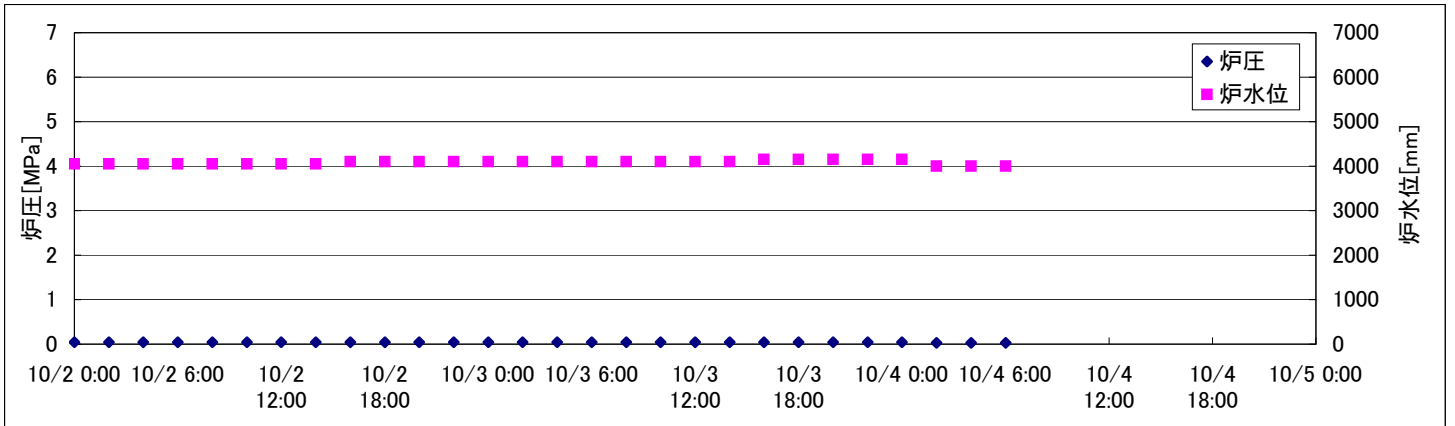
2F-2号機



2F-3号機



2F-4号機



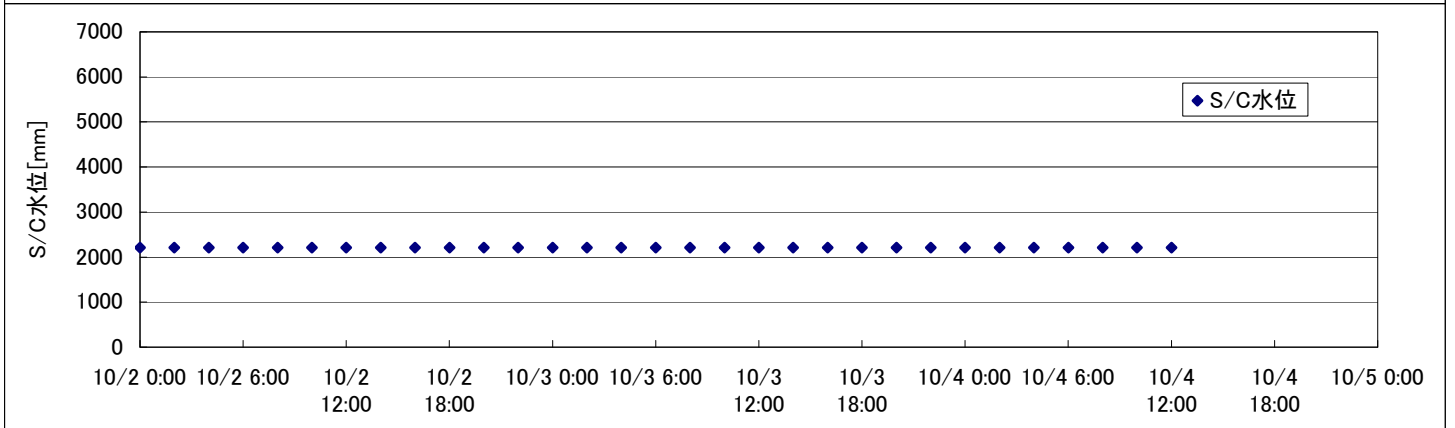
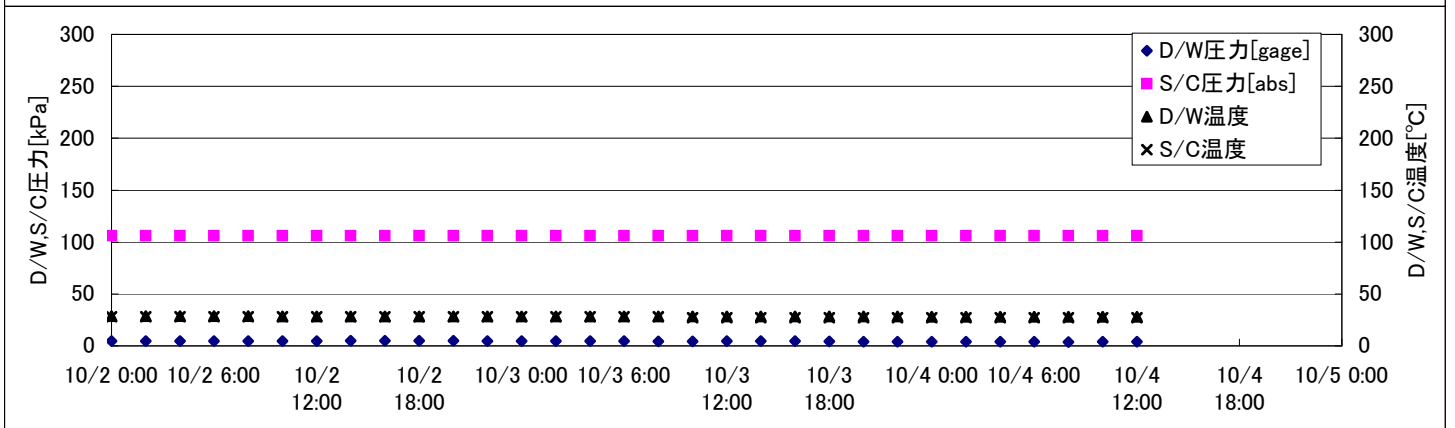
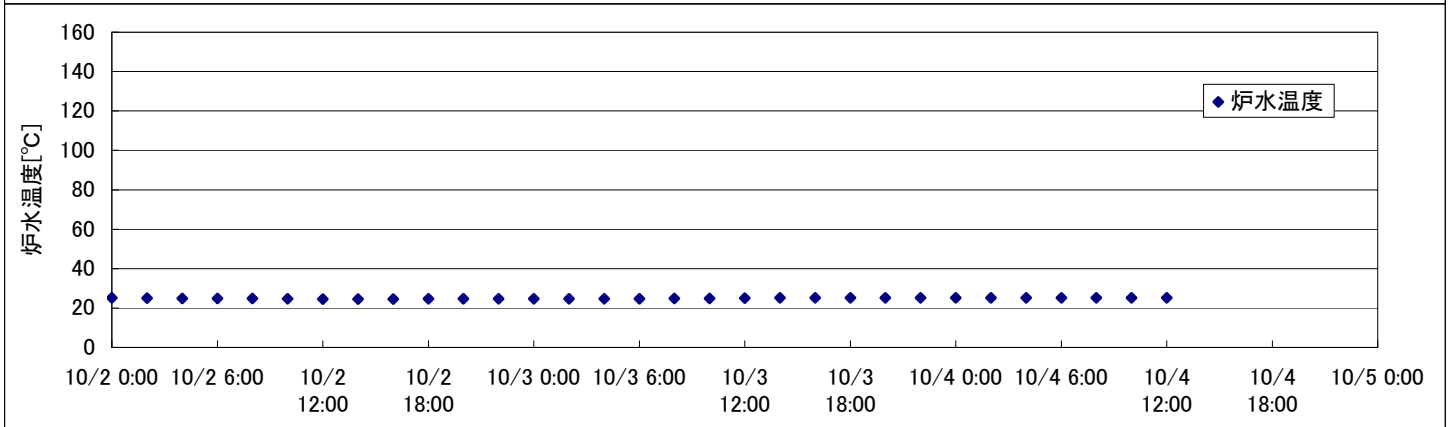
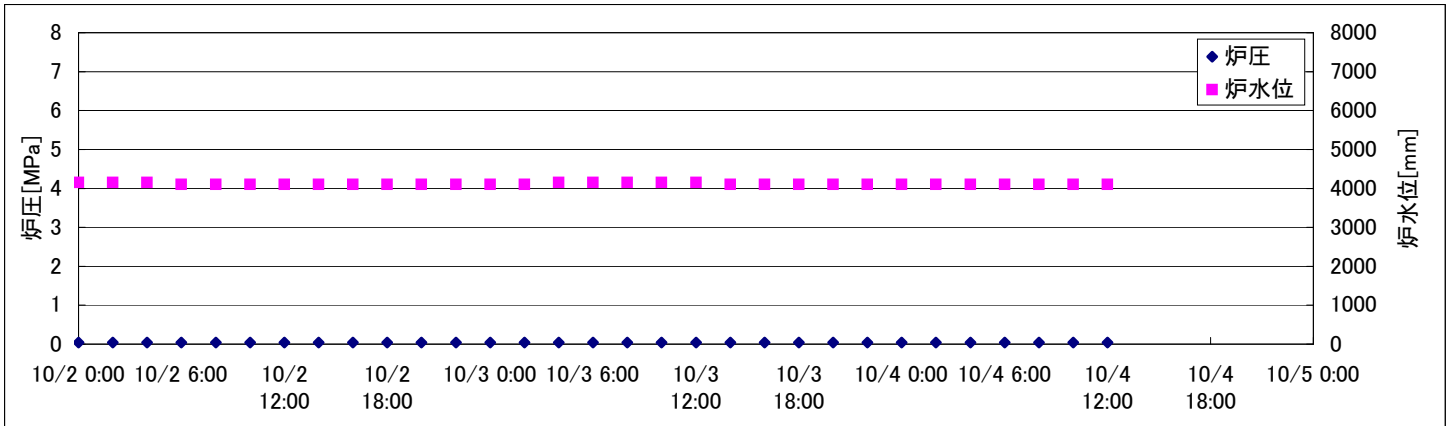
2F-4号機

※燃料頂部(TAF)からの水位=炉水位+4200[mm]

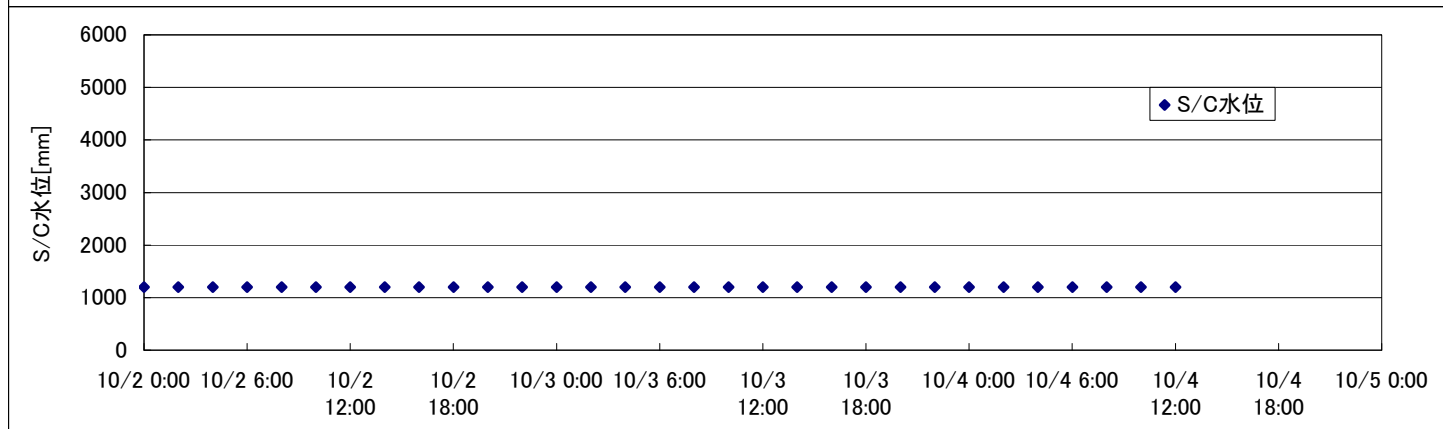
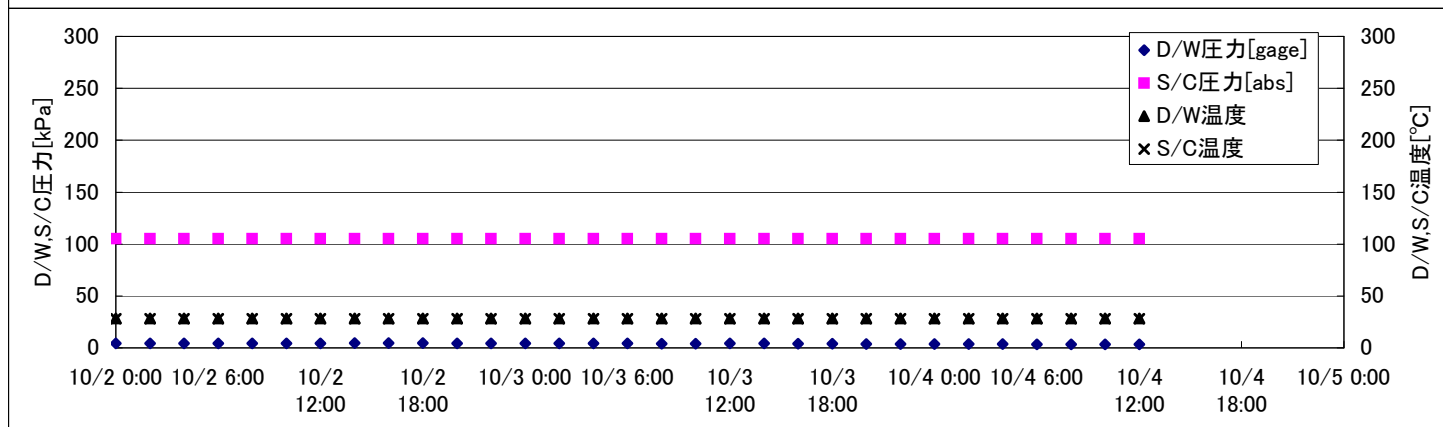
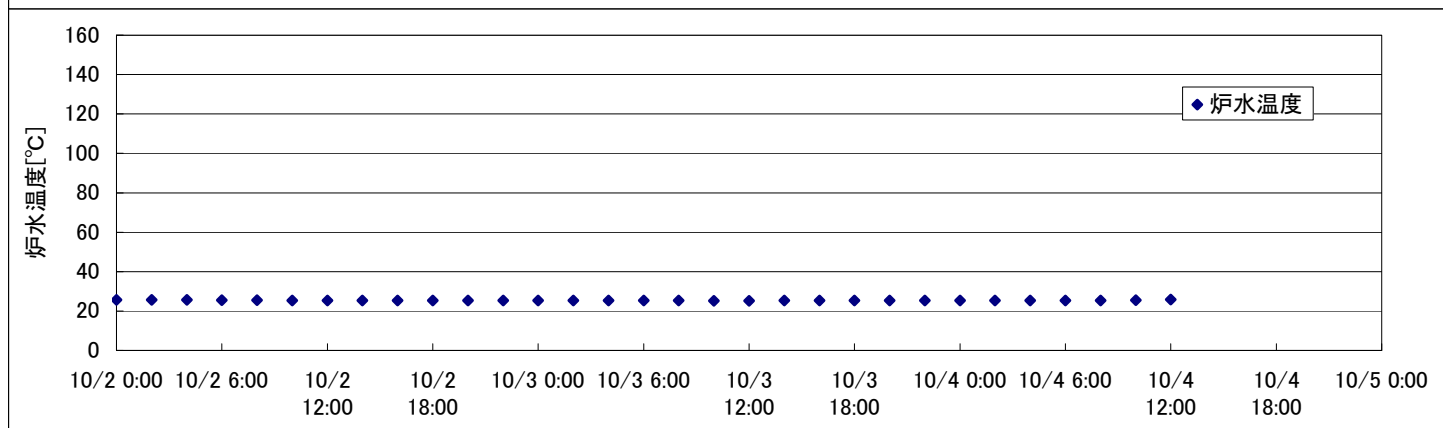
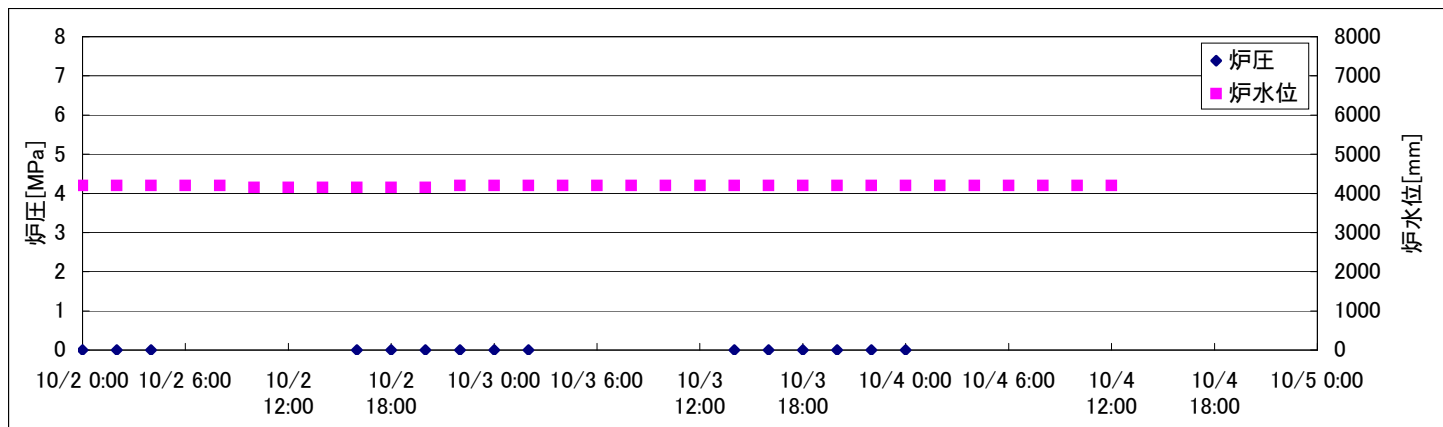
時間	炉圧 [MPa (gage)]	炉水位 [mm] 停止時	炉水温度[°C]	D/W圧力 [kPa(gage)]	D/W温度 [°C]	S/C圧力 [kPa(abs)]	S/C水位 [mm]	S/C温度 [°C]
2011/10/2 0:00	0.04	4050	25.7		31.6	101	2200	24
2011/10/2 2:00	0.04	4050	25.6		31.6	101	2200	24
2011/10/2 4:00	0.04	4050	25.6		31.6	101	2200	24
2011/10/2 6:00	0.04	4050	25.4		31.6	101	2200	24
2011/10/2 8:00	0.04	4050	25.3		31.6	101	2200	24
2011/10/2 10:00	0.04	4050	25.2		31.6	101	2200	24
2011/10/2 12:00	0.04	4050	25.2		31.6	101	2200	24
2011/10/2 14:00	0.04	4050	25.2		31.6	100	2200	24
2011/10/2 16:00	0.04	4100	25.2		31.6	100	2200	24
2011/10/2 18:00	0.04	4100	25.2		31.5	101	2200	24
2011/10/2 20:00	0.04	4100	25.2		31.5	101	2200	24
2011/10/2 22:00	0.04	4100	25.5		31.5	101	2200	24
2011/10/3 0:00	0.04	4100	25.2		31.6	100	2200	24
2011/10/3 2:00	0.04	4100	25.1		31.6	100	2200	24
2011/10/3 4:00	0.04	4100	25.1		31.6	101	2200	24
2011/10/3 6:00	0.04	4100	25.0		31.6	101	2200	24
2011/10/3 8:00	0.04	4100	25.0		31.5	101	2200	24
2011/10/3 10:00	0.04	4100	24.9		31.4	101	2200	24
2011/10/3 12:00	0.04	4100	25.0		31.6	101	2200	24
2011/10/3 14:00	0.04	4100	25.4		31.5	101	2200	24
2011/10/3 16:00	0.04	4150	25.5		31.4	101	2200	24
2011/10/3 18:00	0.04	4150	25.7		31.4	101	2200	24
2011/10/3 20:00	0.04	4150	25.7		31.5	101	2200	24
2011/10/3 22:00	0.04	4150	25.7		31.5	101	2200	24
2011/10/4 0:00	0.04	4150	25.7		31.4	101	2200	24
2011/10/4 2:00	0.03	4000	25.6		31.1	101	2200	24
2011/10/4 4:00	0.03	4000	25.6		31.4	101	2200	24
2011/10/4 6:00	0.03	4000	25.5		31.3	101	2200	24
2011/10/4 8:00								
2011/10/4 10:00								
2011/10/4 12:00								
2011/10/4 14:00								
2011/10/4 16:00								
2011/10/4 18:00								
2011/10/4 20:00								
2011/10/4 22:00								
2011/10/5 0:00								

D/W圧力について
 ・パーソナルエアロックドア開放中であるため、9/6 10:00 より記載せず

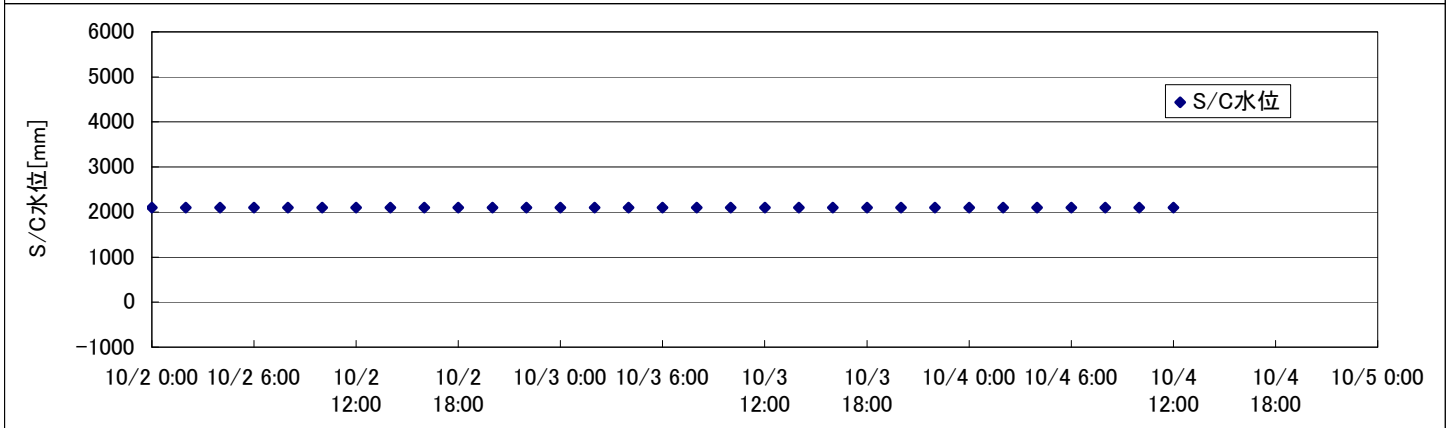
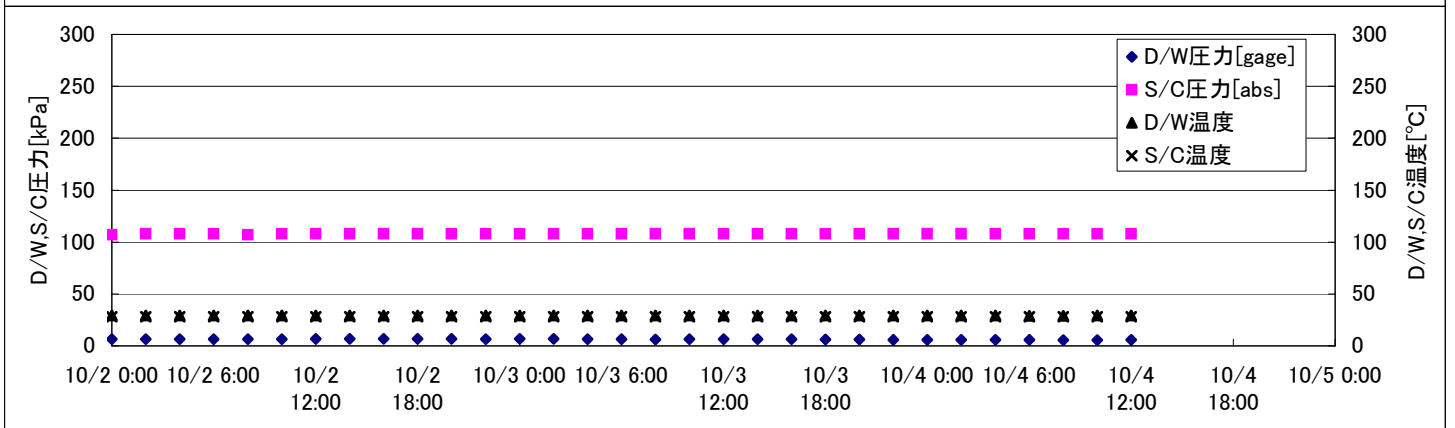
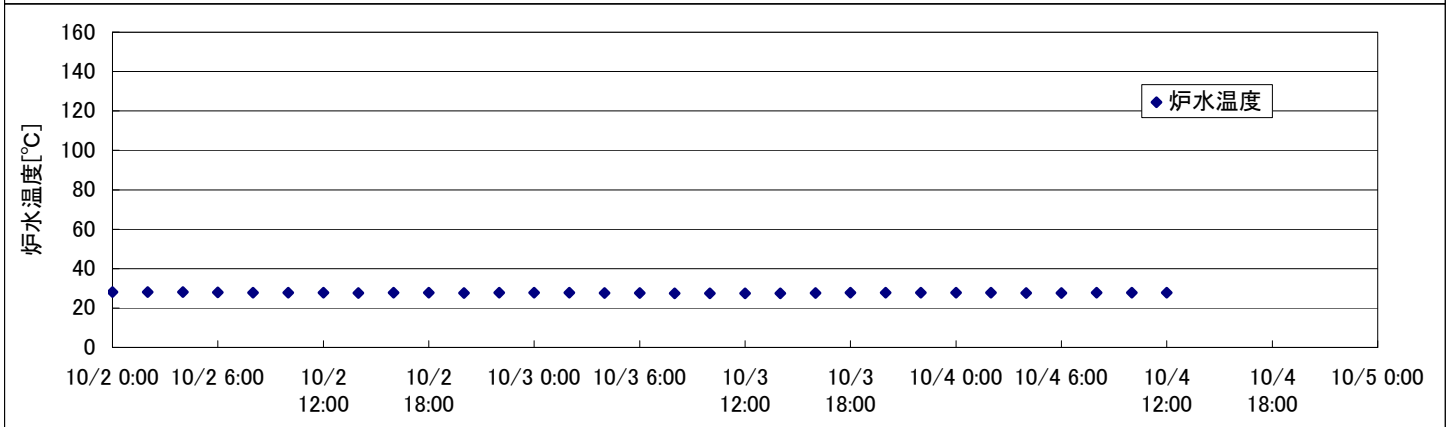
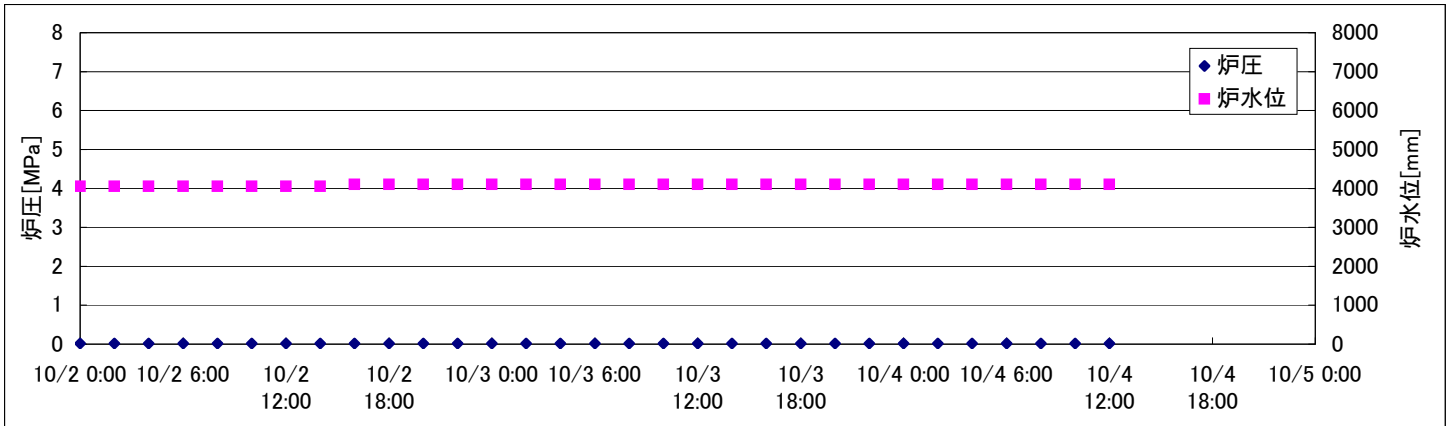
2F-1号機



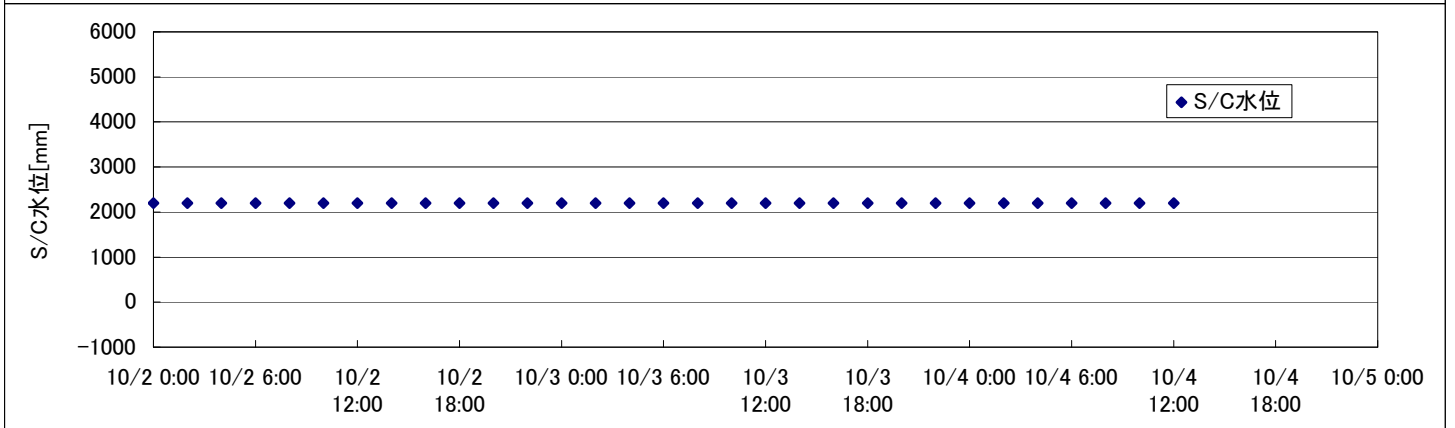
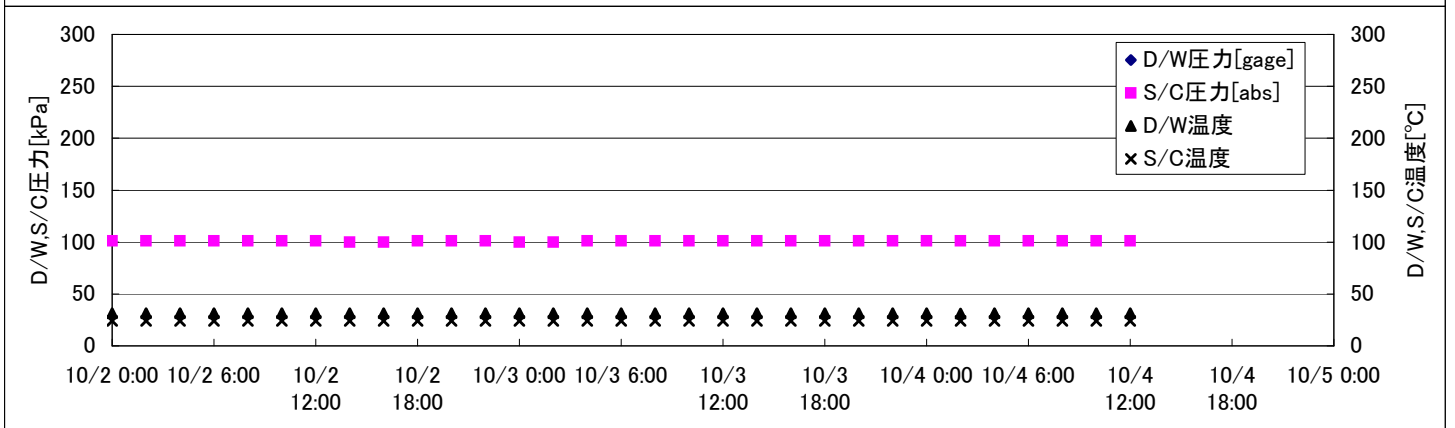
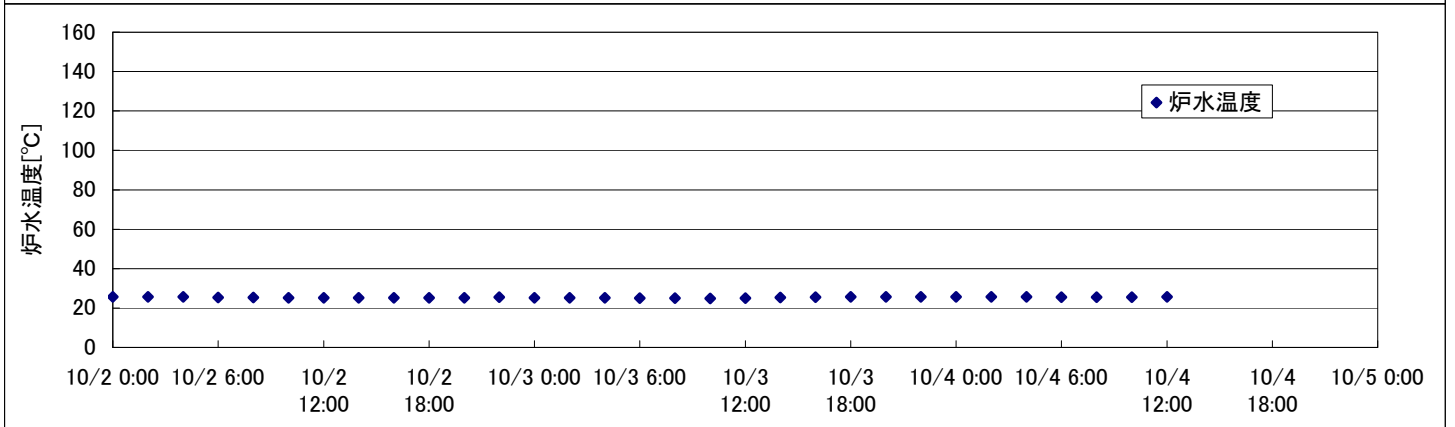
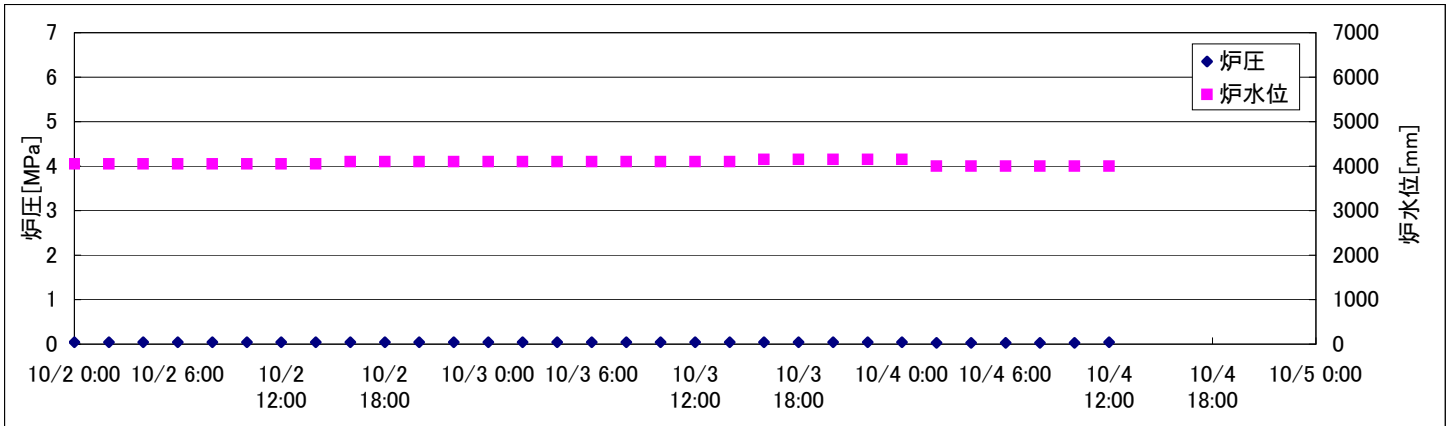
2F-2号機



2F-3号機



2F-4号機



2F-2号機

※燃料頂部(TAF)からの水位=炉水位+4200[mm]

時間	炉圧 [MPa (gage)]	炉水位 [mm] 停止時	炉水温度[°C]	D/W圧力 [kPa(gage)]	D/W温度 [°C]	S/C圧力 [kPa(abs)]	S/C水位 [mm]	S/C温度 [°C]
2011/10/2 0:00	0.00	4200	25.7	4	28.5	105	1200	28
2011/10/2 2:00	0.00	4200	25.7	4	28.4	105	1200	28
2011/10/2 4:00	0.00	4200	25.6	4	28.4	105	1200	28
2011/10/2 6:00	-0.01	4200	25.5	4	28.5	105	1200	28
2011/10/2 8:00	-0.01	4200	25.5	4	28.5	105	1200	28
2011/10/2 10:00	-0.01	4150	25.4	4	28.5	105	1200	28
2011/10/2 12:00	-0.01	4150	25.3	4	28.5	105	1200	28
2011/10/2 14:00	-0.01	4150	25.4	5	28.5	105	1200	28
2011/10/2 16:00	0.00	4150	25.4	5	28.4	105	1200	28
2011/10/2 18:00	0.00	4150	25.4	5	28.4	105	1200	28
2011/10/2 20:00	0.00	4150	25.4	4	28.4	105	1200	28
2011/10/2 22:00	0.00	4200	25.4	4	28.4	105	1200	28
2011/10/3 0:00	0.00	4200	25.4	4	28.5	105	1200	28
2011/10/3 2:00	0.00	4200	25.4	4	28.5	105	1200	28
2011/10/3 4:00	-0.01	4200	25.4	4	28.4	105	1200	28
2011/10/3 6:00	-0.01	4200	25.3	4	28.4	105	1200	28
2011/10/3 8:00	-0.01	4200	25.3	4	28.4	105	1200	28
2011/10/3 10:00	-0.01	4200	25.2	4	28.4	105	1200	28
2011/10/3 12:00	-0.01	4200	25.2	4	28.3	105	1200	28
2011/10/3 14:00	0.00	4200	25.3	4	28.3	105	1200	28
2011/10/3 16:00	0.00	4200	25.3	4	28.3	105	1200	28
2011/10/3 18:00	0.00	4200	25.4	4	28.4	105	1200	28
2011/10/3 20:00	0.00	4200	25.4	4	28.4	105	1200	28
2011/10/3 22:00	0.00	4200	25.4	4	28.4	105	1200	28
2011/10/4 0:00	0.00	4200	25.4	4	28.4	105	1200	28
2011/10/4 2:00	-0.01	4200	25.4	4	28.4	105	1200	28
2011/10/4 4:00	-0.01	4200	25.3	4	28.4	105	1200	28
2011/10/4 6:00	-0.01	4200	25.4	4	28.4	105	1200	28
2011/10/4 8:00	-0.01	4200	25.4	3	28.4	105	1200	28
2011/10/4 10:00	-0.01	4200	25.5	3	28.4	105	1200	28
2011/10/4 12:00	-0.01	4200	25.8	3	28.4	105	1200	28
2011/10/4 14:00								
2011/10/4 16:00								
2011/10/4 18:00								
2011/10/4 20:00								
2011/10/4 22:00								
2011/10/5 0:00								

10/4 10:57 RHRポンプ(A) 停止
11:18 RHRポンプ(B) 起動

2F-4号機

※燃料頂部(TAF)からの水位=炉水位+4200[mm]

時間	炉圧 [MPa (gage)]	炉水位 [mm] 停止時	炉水温度[°C]	D/W圧力 [kPa(gage)]	D/W温度 [°C]	S/C圧力 [kPa(abs)]	S/C水位 [mm]	S/C温度 [°C]
2011/10/2 0:00	0.04	4050	25.7		31.6	101	2200	24
2011/10/2 2:00	0.04	4050	25.6		31.6	101	2200	24
2011/10/2 4:00	0.04	4050	25.6		31.6	101	2200	24
2011/10/2 6:00	0.04	4050	25.4		31.6	101	2200	24
2011/10/2 8:00	0.04	4050	25.3		31.6	101	2200	24
2011/10/2 10:00	0.04	4050	25.2		31.6	101	2200	24
2011/10/2 12:00	0.04	4050	25.2		31.6	101	2200	24
2011/10/2 14:00	0.04	4050	25.2		31.6	100	2200	24
2011/10/2 16:00	0.04	4100	25.2		31.6	100	2200	24
2011/10/2 18:00	0.04	4100	25.2		31.5	101	2200	24
2011/10/2 20:00	0.04	4100	25.2		31.5	101	2200	24
2011/10/2 22:00	0.04	4100	25.5		31.5	101	2200	24
2011/10/3 0:00	0.04	4100	25.2		31.6	100	2200	24
2011/10/3 2:00	0.04	4100	25.1		31.6	100	2200	24
2011/10/3 4:00	0.04	4100	25.1		31.6	101	2200	24
2011/10/3 6:00	0.04	4100	25.0		31.6	101	2200	24
2011/10/3 8:00	0.04	4100	25.0		31.5	101	2200	24
2011/10/3 10:00	0.04	4100	24.9		31.4	101	2200	24
2011/10/3 12:00	0.04	4100	25.0		31.6	101	2200	24
2011/10/3 14:00	0.04	4100	25.4		31.5	101	2200	24
2011/10/3 16:00	0.04	4150	25.5		31.4	101	2200	24
2011/10/3 18:00	0.04	4150	25.7		31.4	101	2200	24
2011/10/3 20:00	0.04	4150	25.7		31.5	101	2200	24
2011/10/3 22:00	0.04	4150	25.7		31.5	101	2200	24
2011/10/4 0:00	0.04	4150	25.7		31.4	101	2200	24
2011/10/4 2:00	0.03	4000	25.6		31.1	101	2200	24
2011/10/4 4:00	0.03	4000	25.6		31.4	101	2200	24
2011/10/4 6:00	0.03	4000	25.5		31.3	101	2200	24
2011/10/4 8:00	0.03	4000	25.5		31.4	101	2200	24
2011/10/4 10:00	0.03	4000	25.5		31.3	101	2200	24
2011/10/4 12:00	0.04	4000	25.6		31.3	101	2200	24
2011/10/4 14:00								
2011/10/4 16:00								
2011/10/4 18:00								
2011/10/4 20:00								
2011/10/4 22:00								
2011/10/5 0:00								

D/W圧力について
 ・パーソナルエアロックドア開放中であるため、9/6 10:00 より記載せず