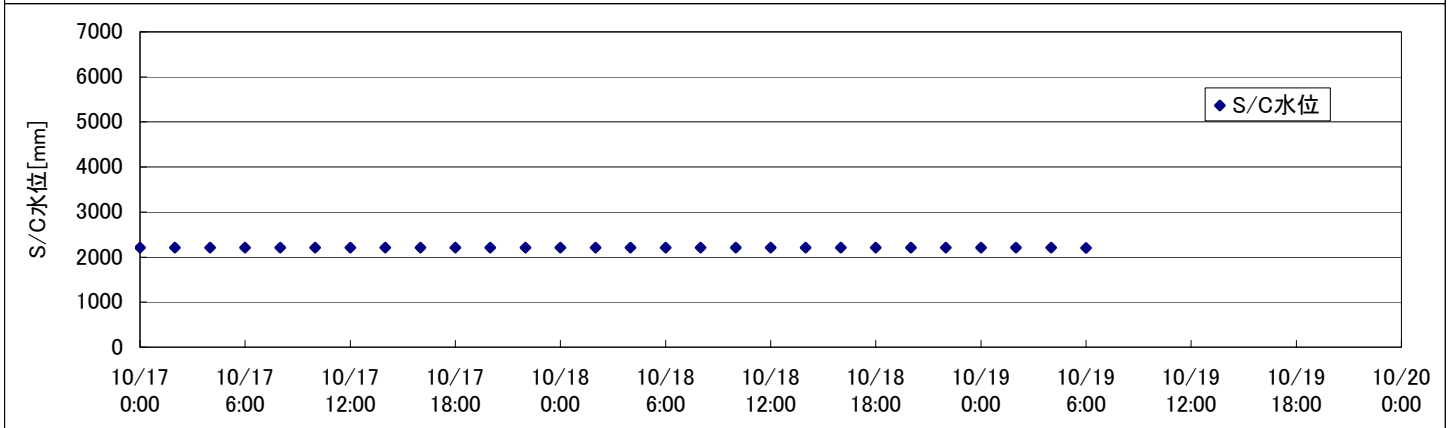
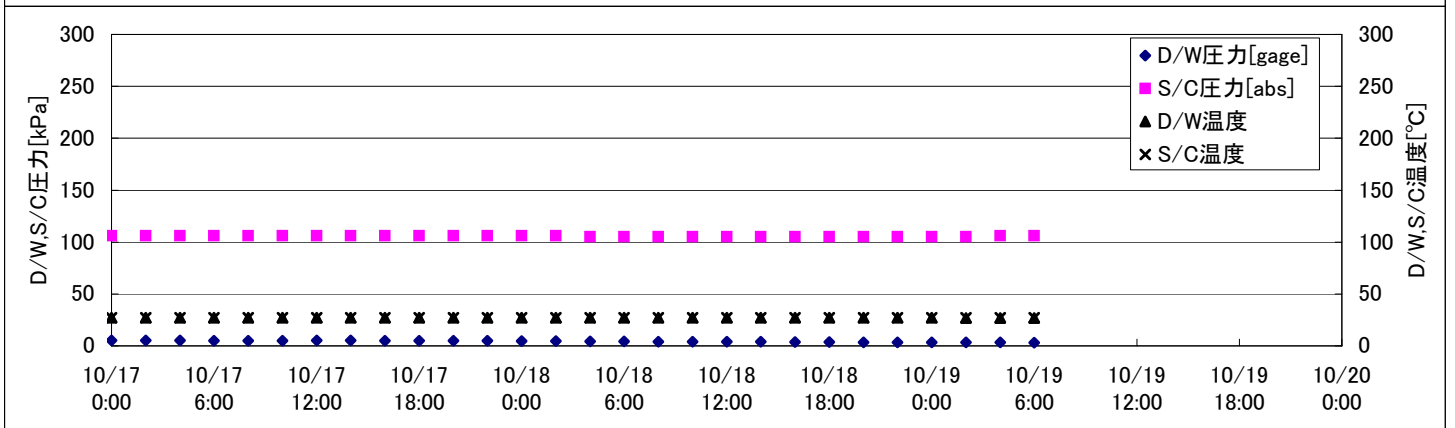
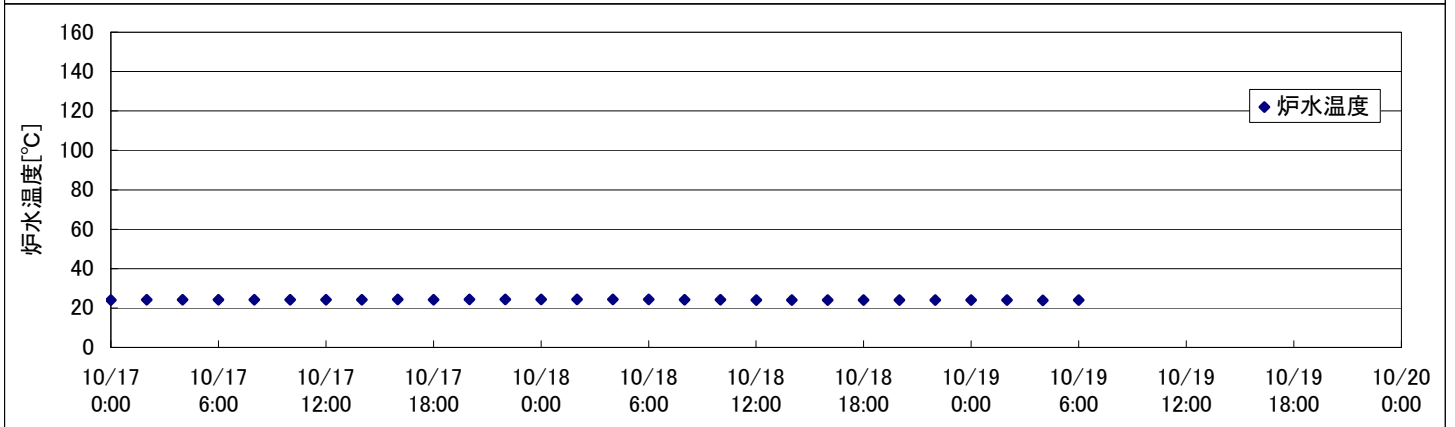
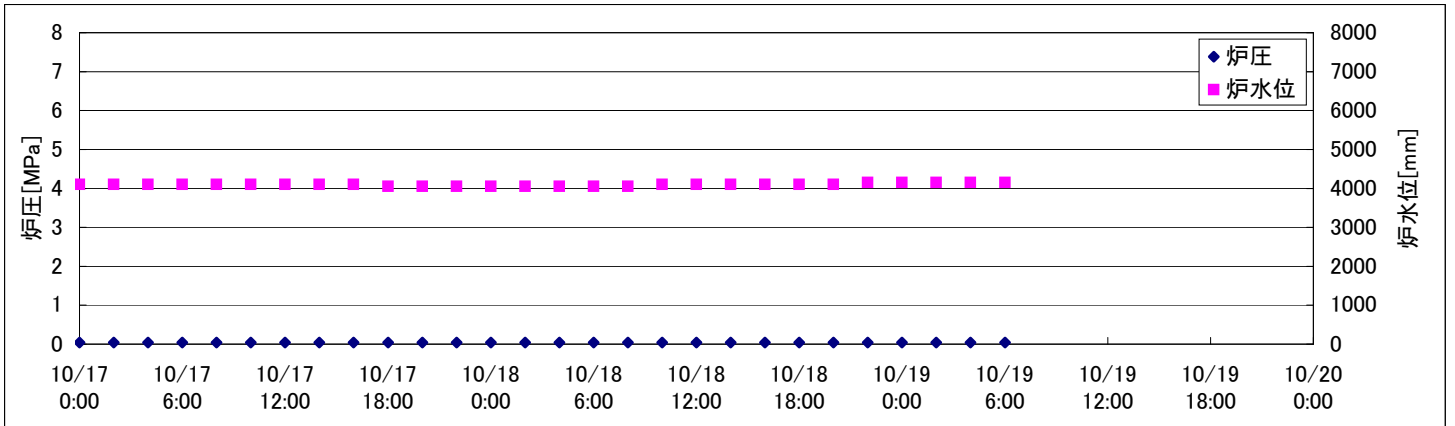
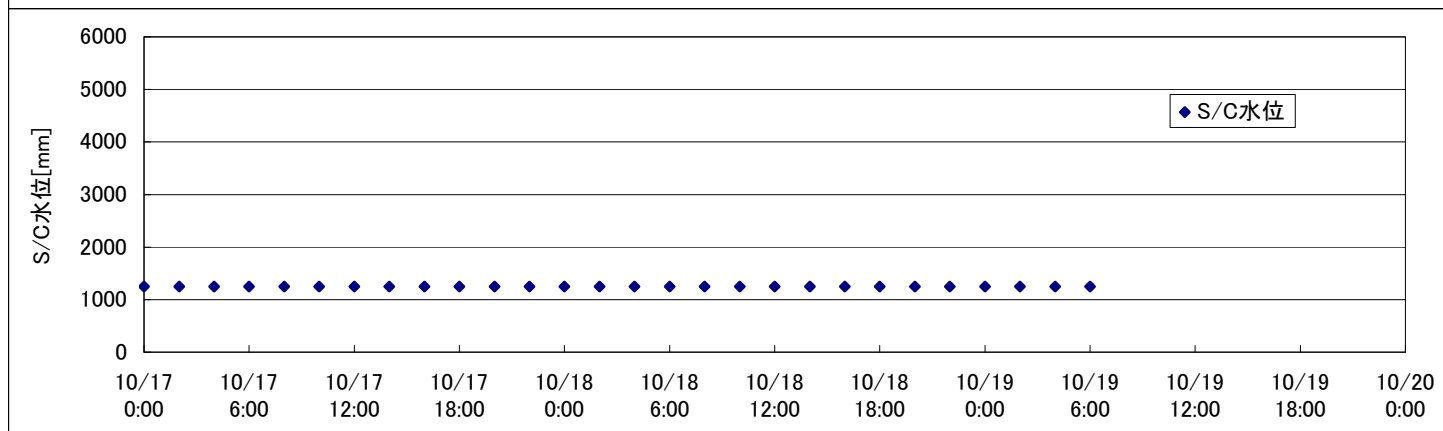
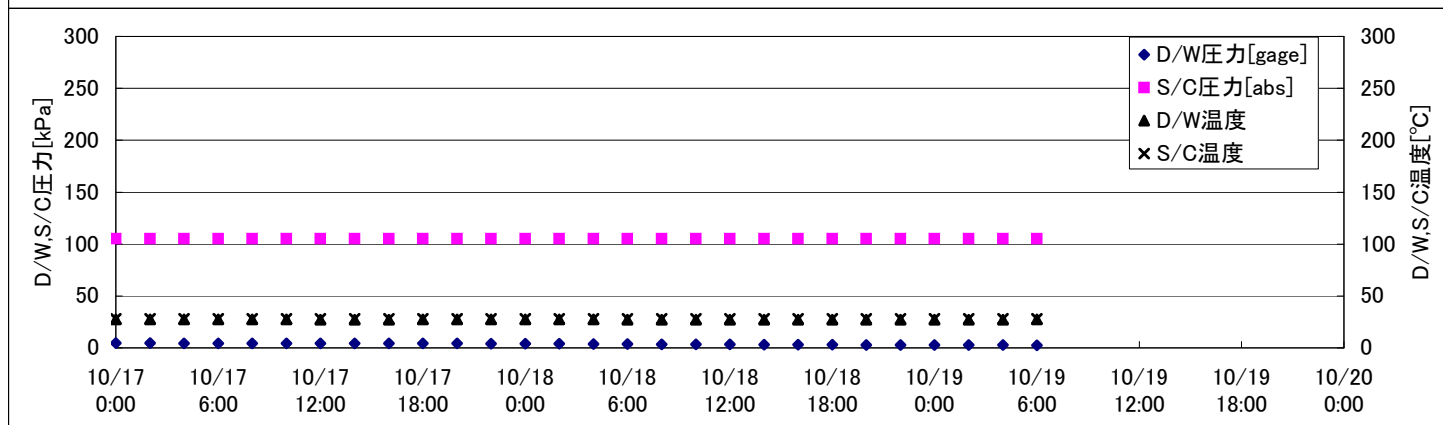
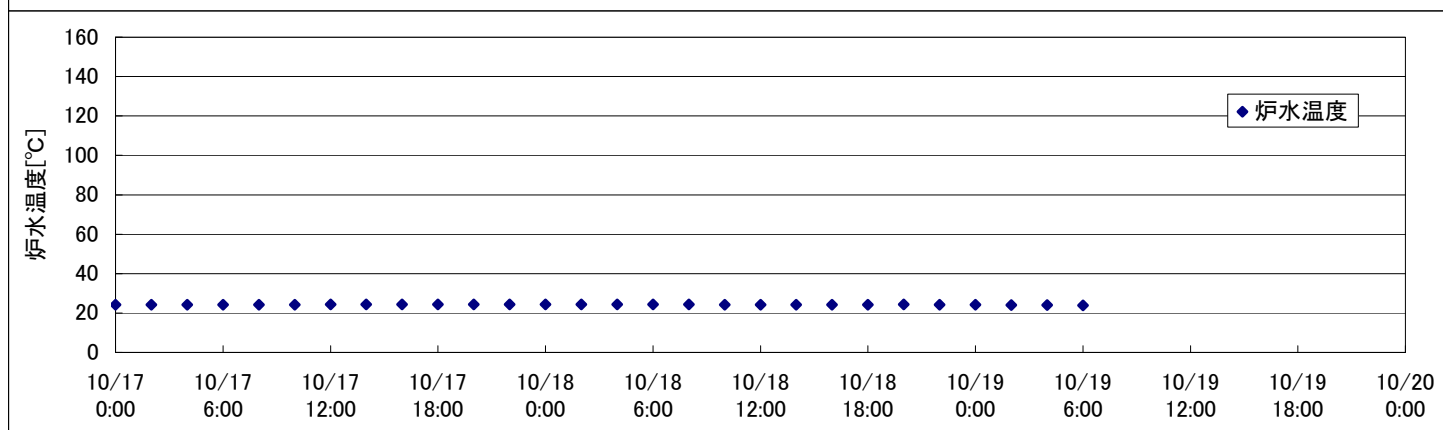
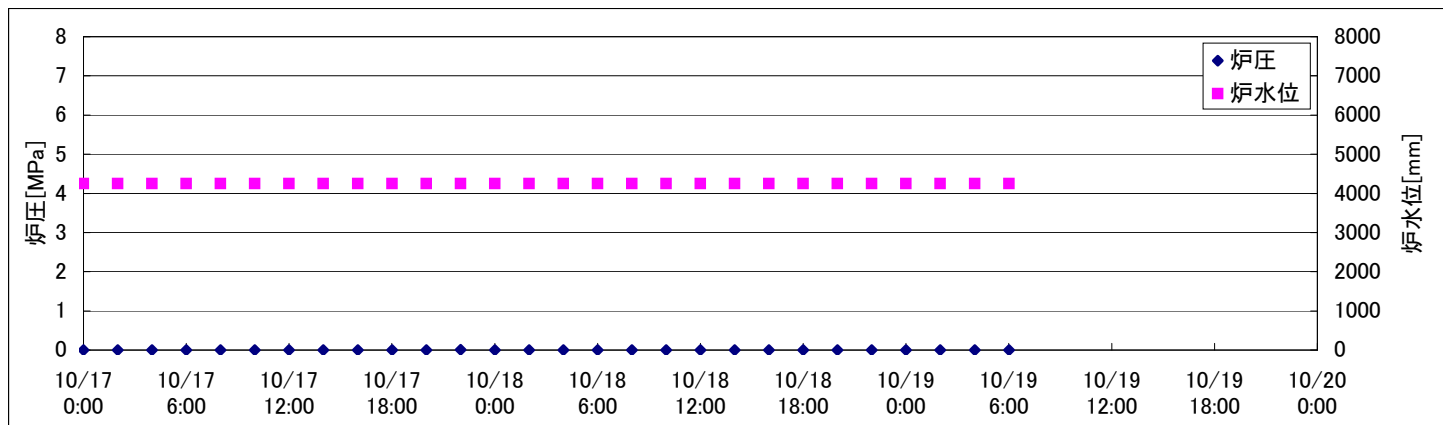


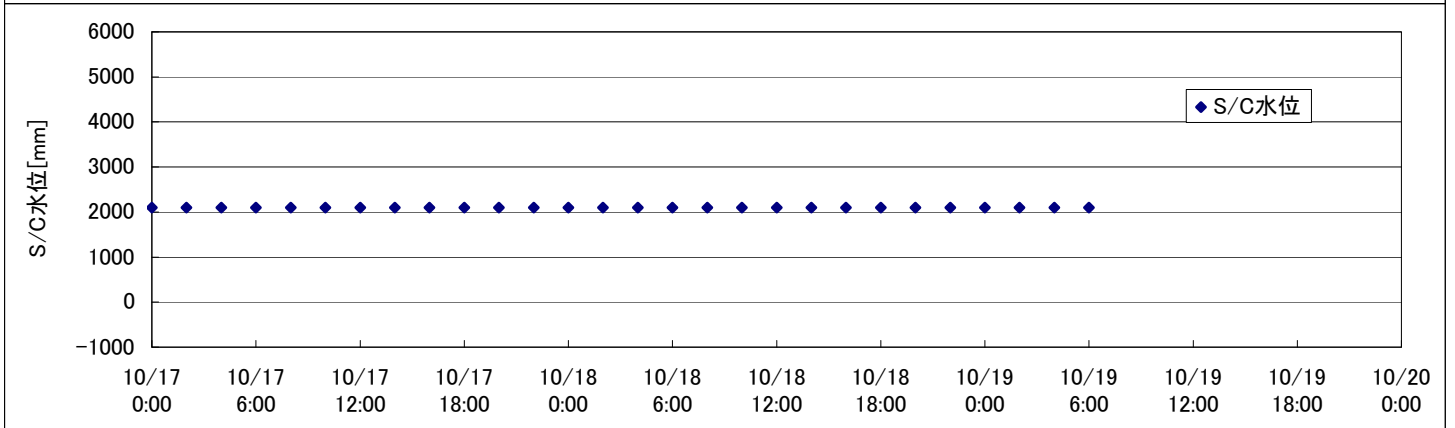
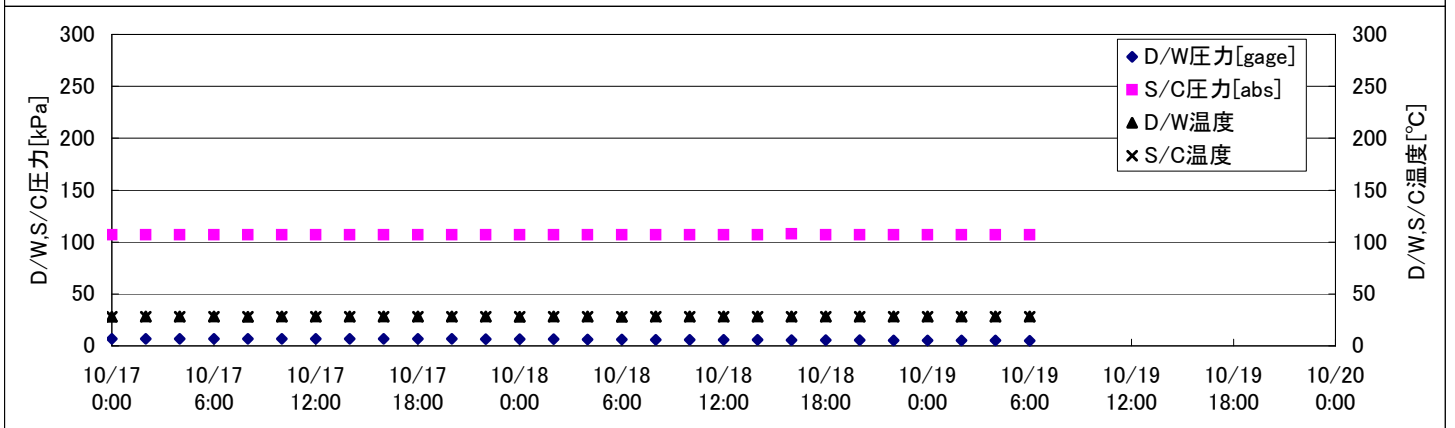
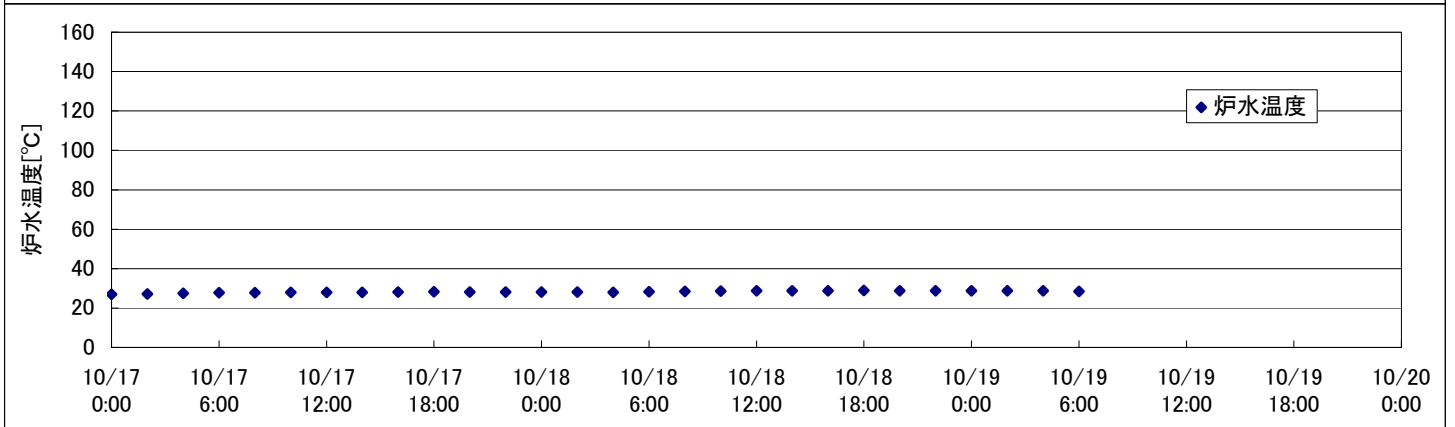
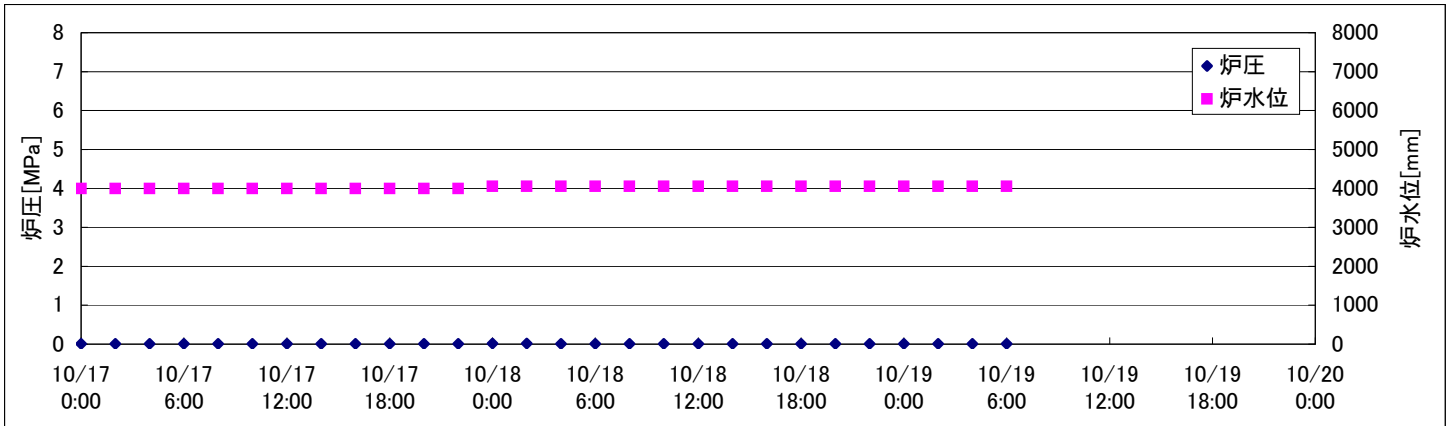
## 2F-1号機



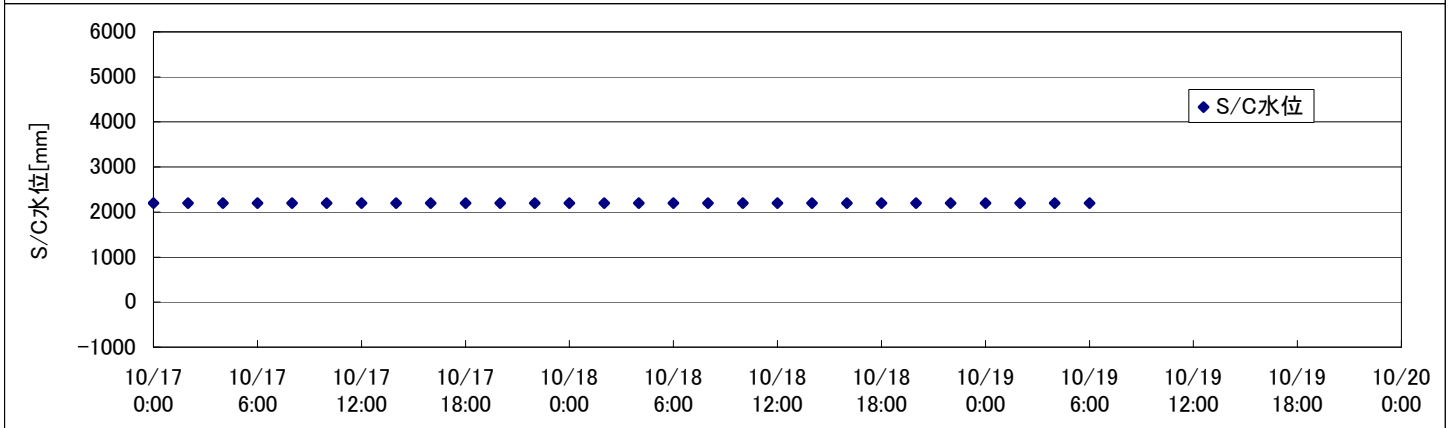
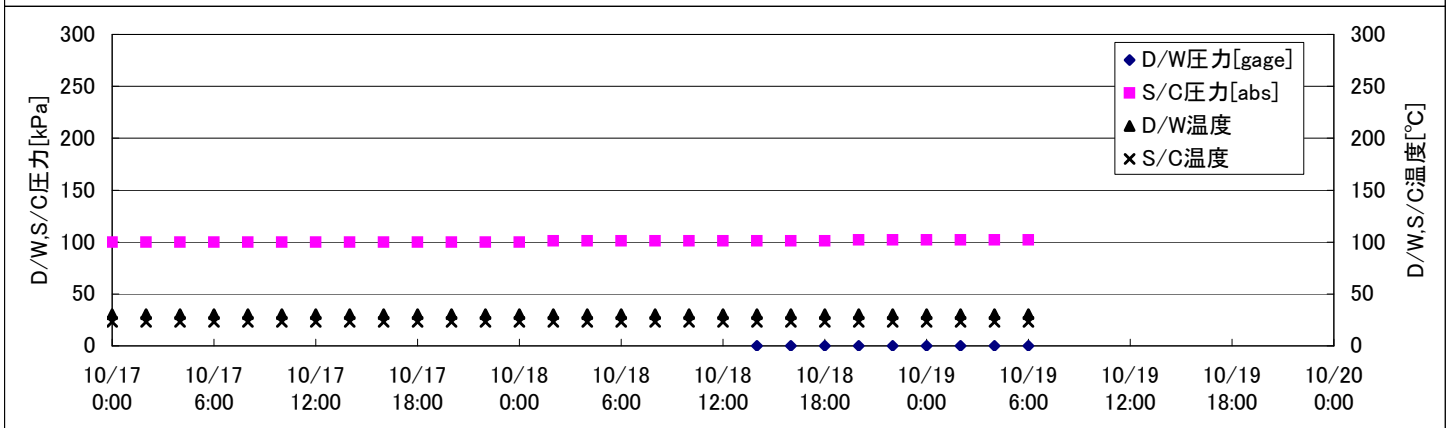
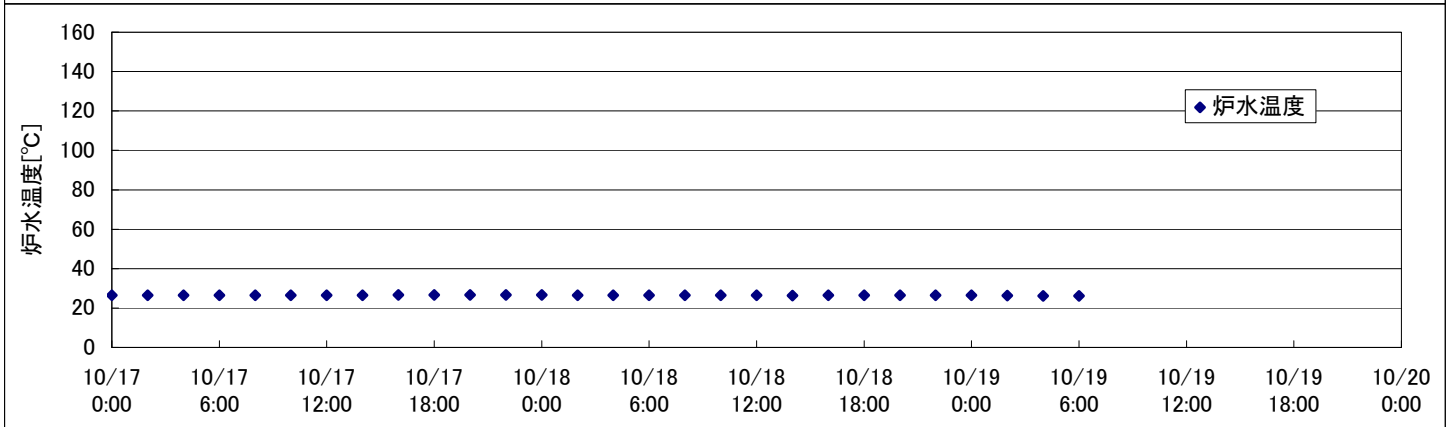
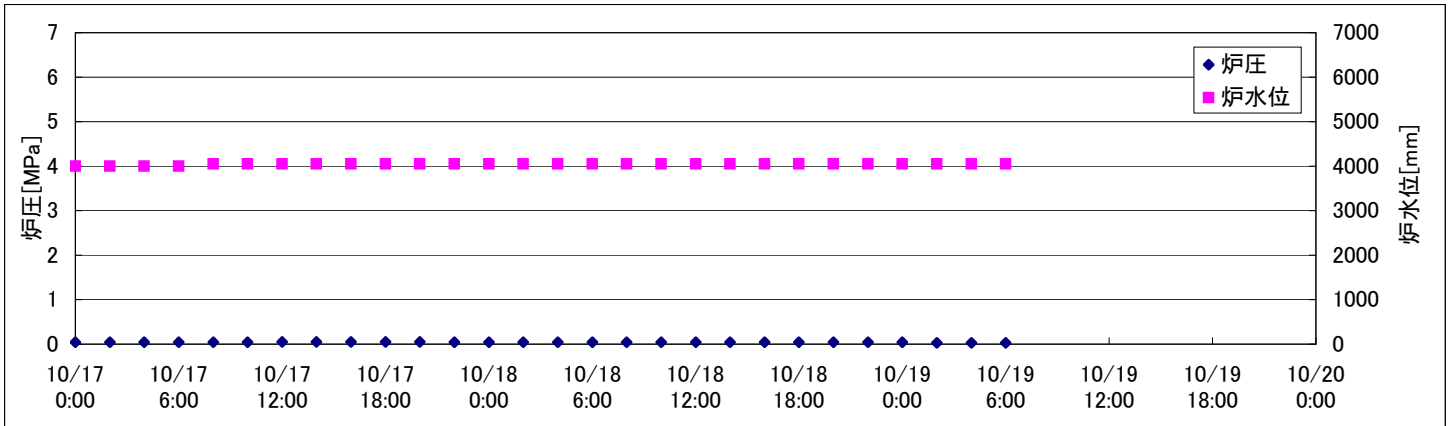
## 2F-2号機



## 2F-3号機



## 2F-4号機









## 2F-4号機

※燃料頂部(TAF)からの水位 = 炉水位 + 4200[mm]

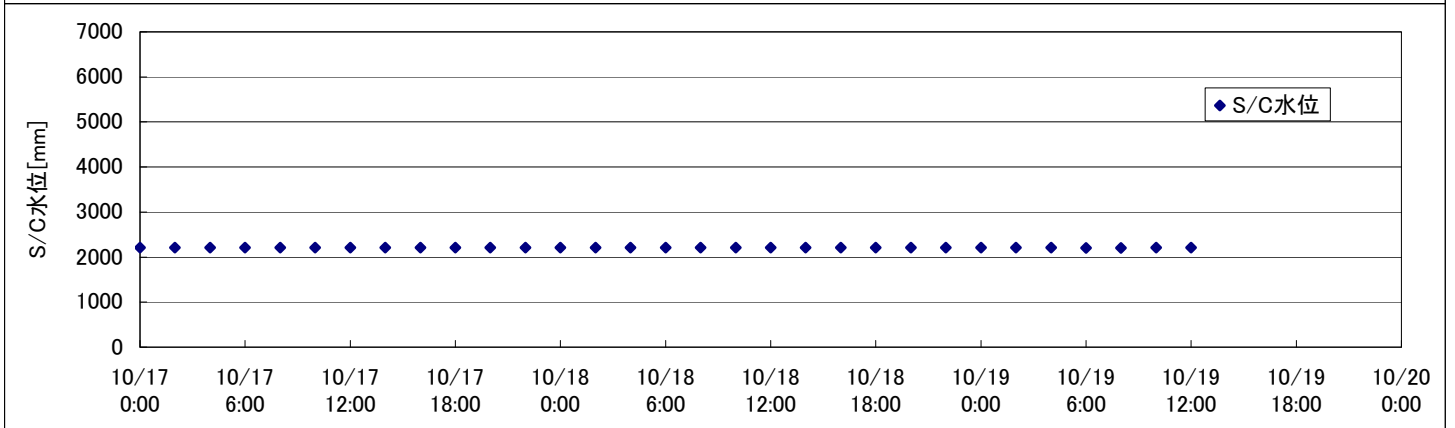
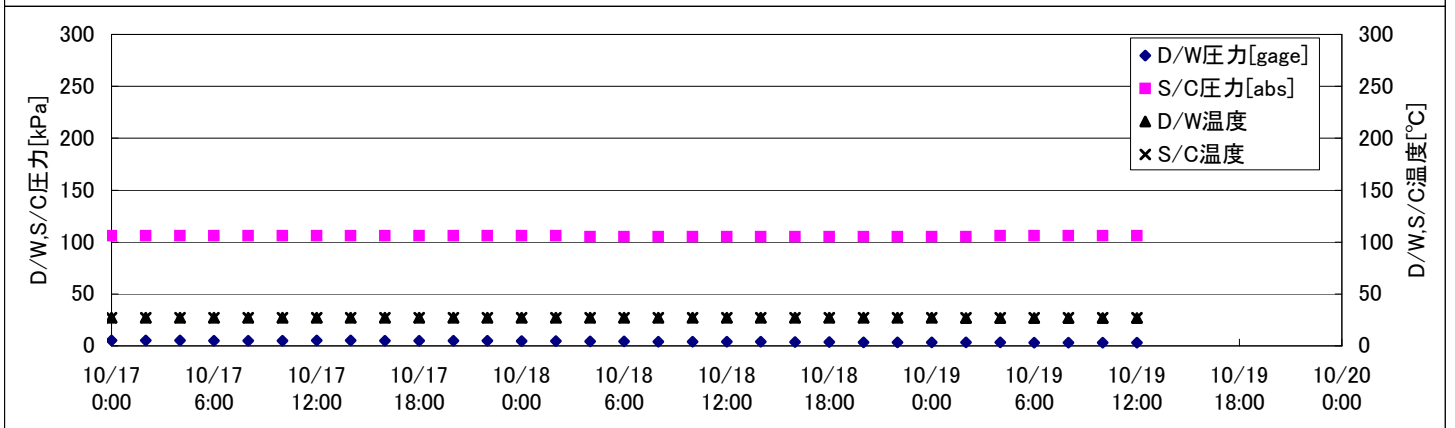
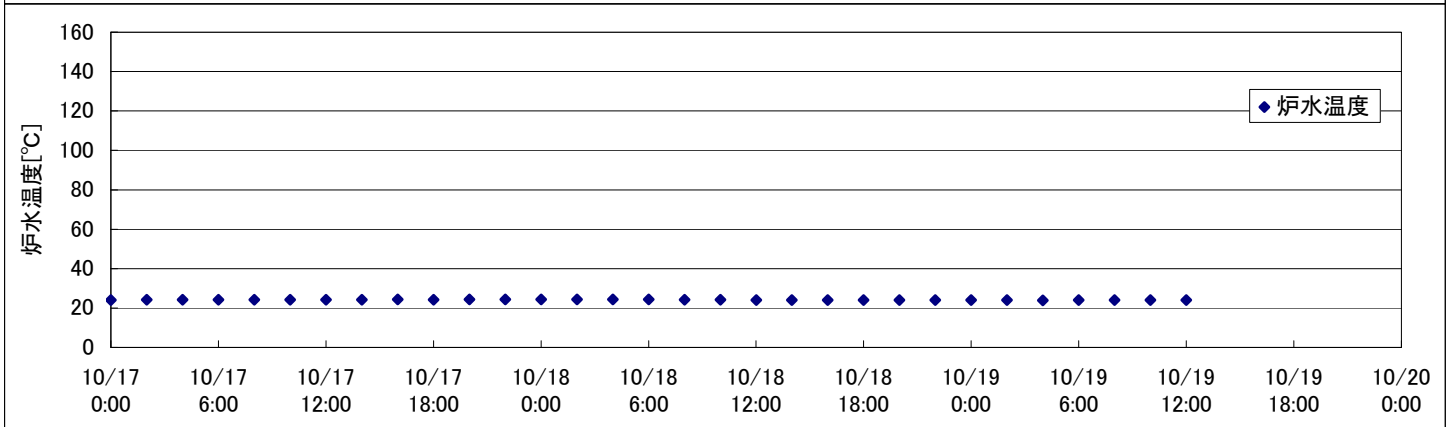
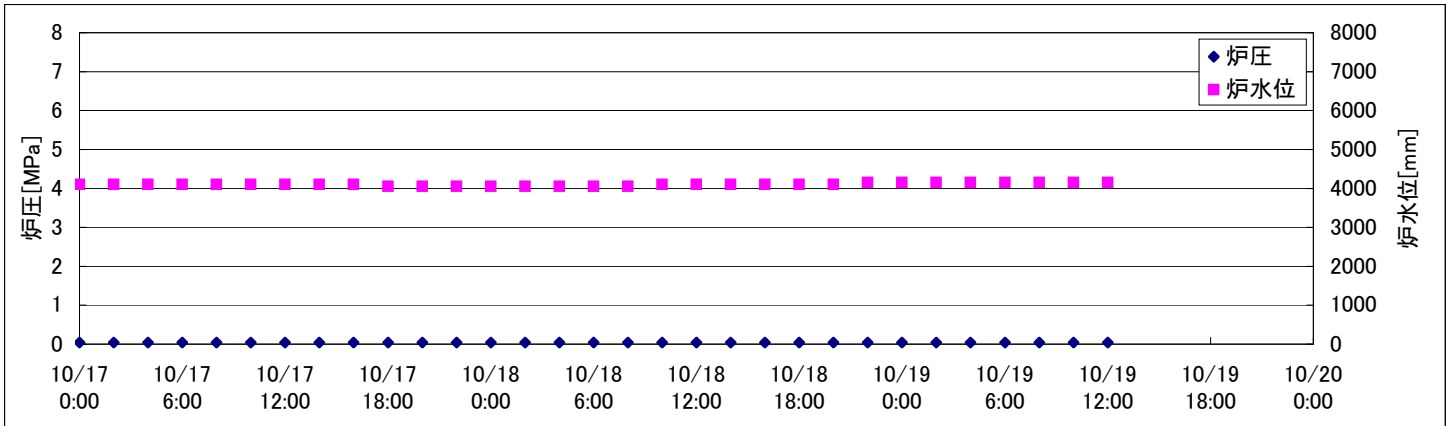
時間	炉圧 [MPa (gage)]	炉水位 [mm] 停止時	炉水温度[°C]	D/W圧力 [kPa(gage)]	D/W温度 [°C]	S/C圧力 [kPa(abs)]	S/C水位 [mm]	S/C温度 [°C]
2011/10/17 0:00	0.04	4000	26.5		30.6	100	2200	23
2011/10/17 2:00	0.04	4000	26.5		30.6	100	2200	23
2011/10/17 4:00	0.04	4000	26.5		30.6	100	2200	23
2011/10/17 6:00	0.04	4000	26.5		30.6	100	2200	23
2011/10/17 8:00	0.04	4050	26.5		30.6	100	2200	23
2011/10/17 10:00	0.04	4050	26.5		30.6	100	2200	23
2011/10/17 12:00	0.05	4050	26.5		30.6	100	2200	23
2011/10/17 14:00	0.05	4050	26.5		30.6	100	2200	23
2011/10/17 16:00	0.05	4050	26.6		30.6	100	2200	23
2011/10/17 18:00	0.05	4050	26.6		30.6	100	2200	23
2011/10/17 20:00	0.05	4050	26.6		30.6	100	2200	23
2011/10/17 22:00	0.04	4050	26.6		30.5	100	2200	23
2011/10/18 0:00	0.04	4050	26.6		30.5	100	2200	23
2011/10/18 2:00	0.04	4050	26.5		30.5	101	2200	23
2011/10/18 4:00	0.04	4050	26.5		30.6	101	2200	23
2011/10/18 6:00	0.04	4050	26.5		30.6	101	2200	23
2011/10/18 8:00	0.04	4050	26.4		30.6	101	2200	23
2011/10/18 10:00	0.04	4050	26.4		30.5	101	2200	23
2011/10/18 12:00	0.04	4050	26.4		30.6	101	2200	23
2011/10/18 14:00	0.04	4050	26.3	-	30.6	101	2200	23
2011/10/18 16:00	0.04	4050	26.4	-	30.5	101	2200	23
2011/10/18 18:00	0.04	4050	26.4	-	30.5	101	2200	23
2011/10/18 20:00	0.04	4050	26.4	-	30.5	102	2200	23
2011/10/18 22:00	0.04	4050	26.4	-	30.5	102	2200	23
2011/10/19 0:00	0.04	4050	26.4	-	30.5	102	2200	23
2011/10/19 2:00	0.03	4050	26.3	-	30.4	102	2200	23
2011/10/19 4:00	0.03	4050	26.2	-	30.4	102	2200	23
2011/10/19 6:00	0.03	4050	26.1	-	30.4	102	2200	23
2011/10/19 8:00								
2011/10/19 10:00								
2011/10/19 12:00								
2011/10/19 14:00								
2011/10/19 16:00								
2011/10/19 18:00								
2011/10/19 20:00								
2011/10/19 22:00								
2011/10/20 0:00								

D/W圧力について

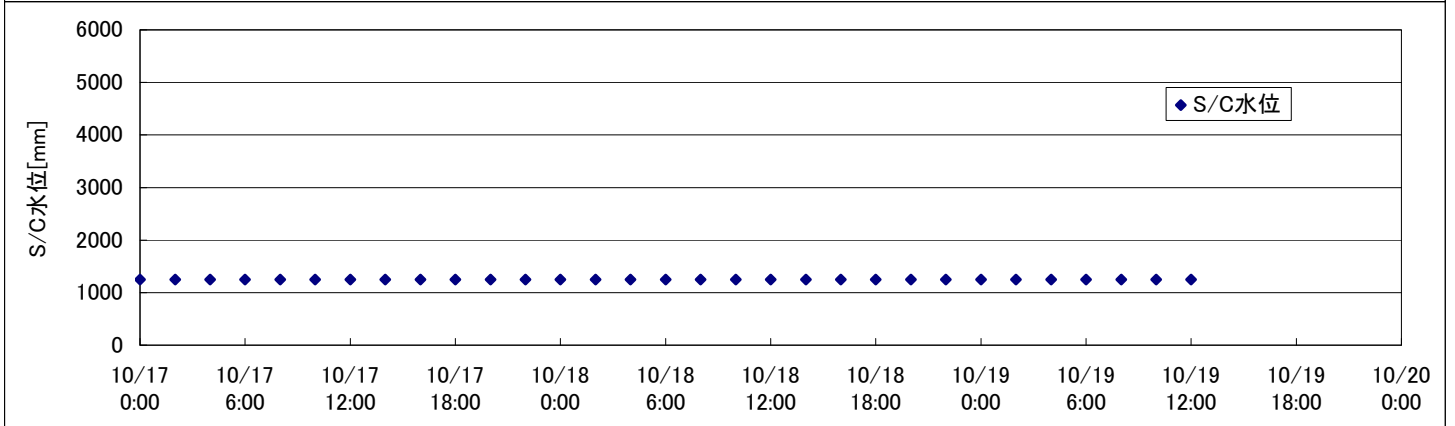
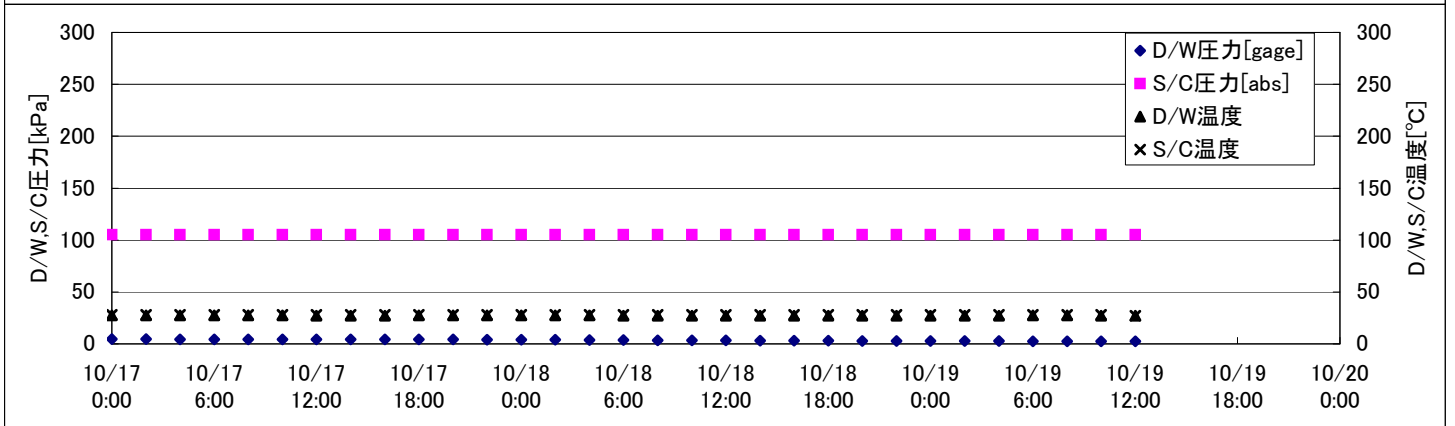
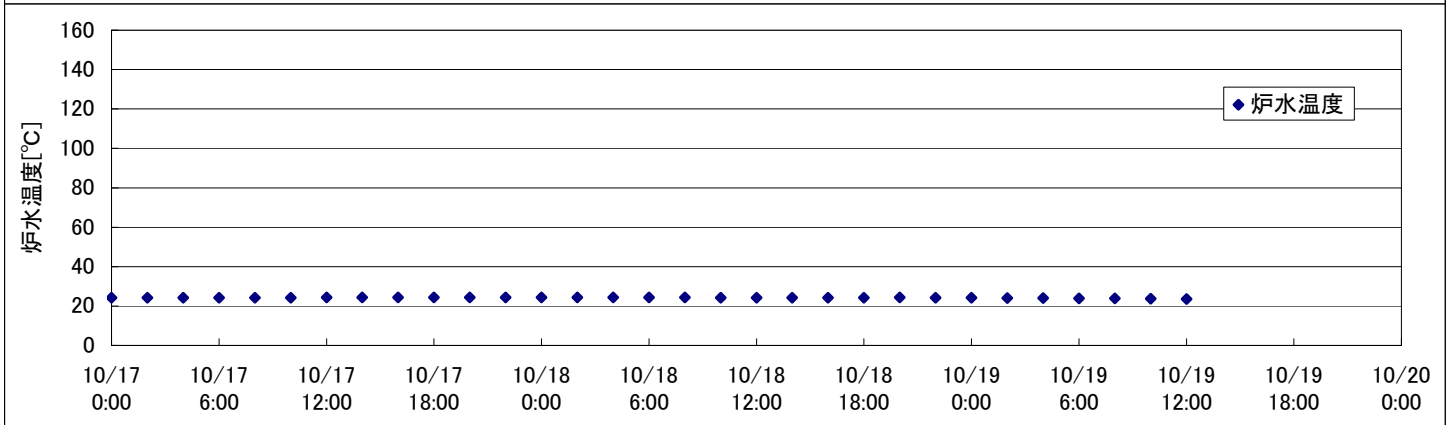
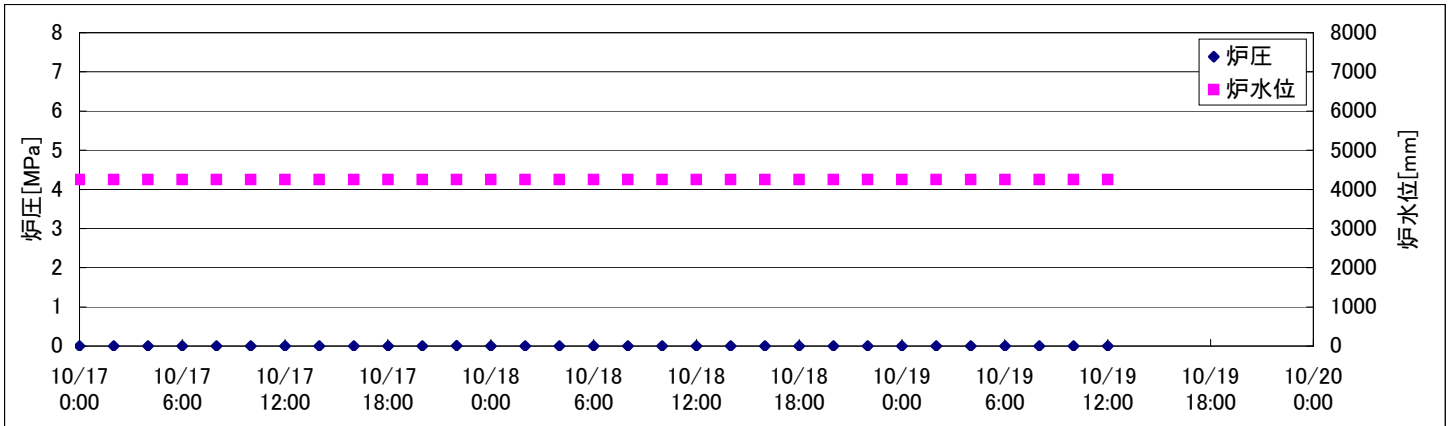
・パーソナルエアロックドア開放中であるため、9/6 10:00 より記載せず



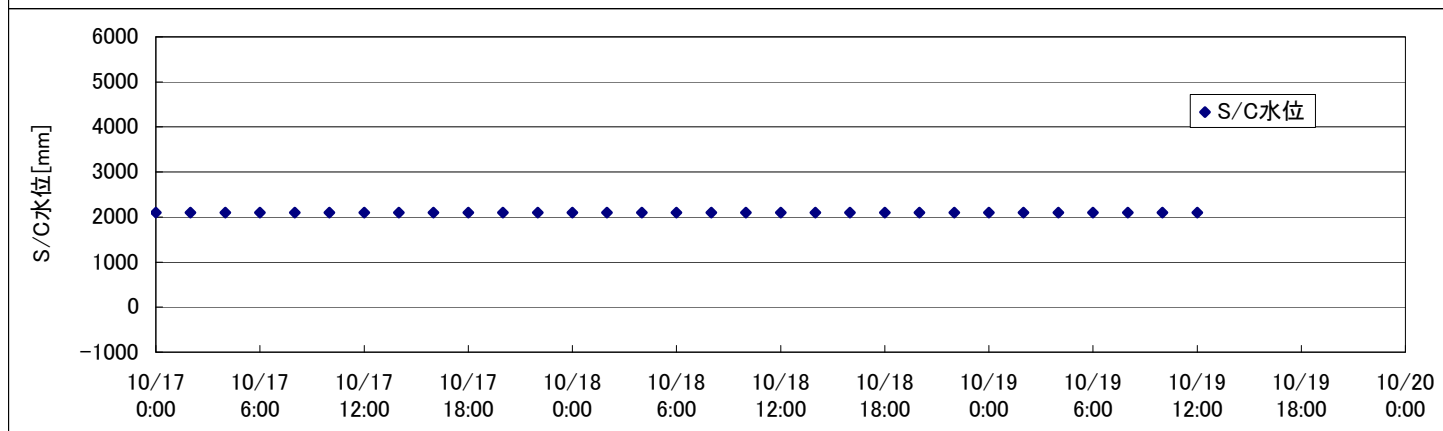
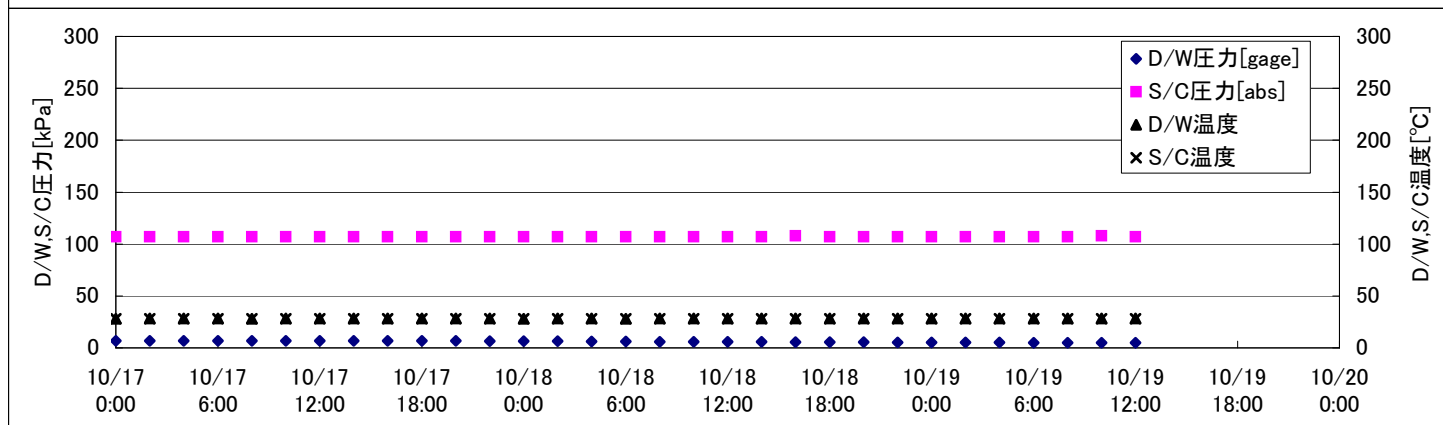
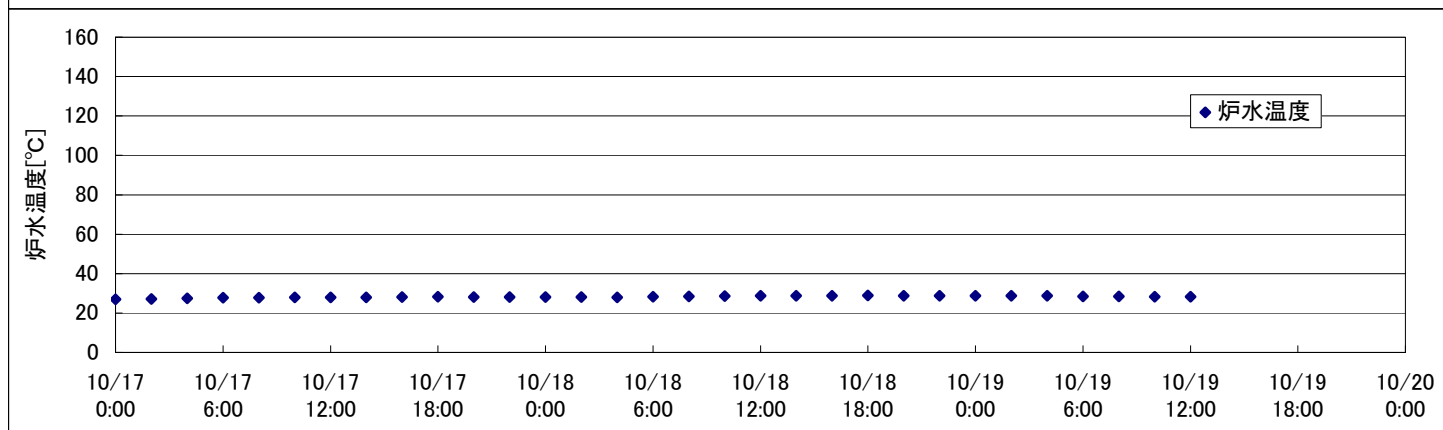
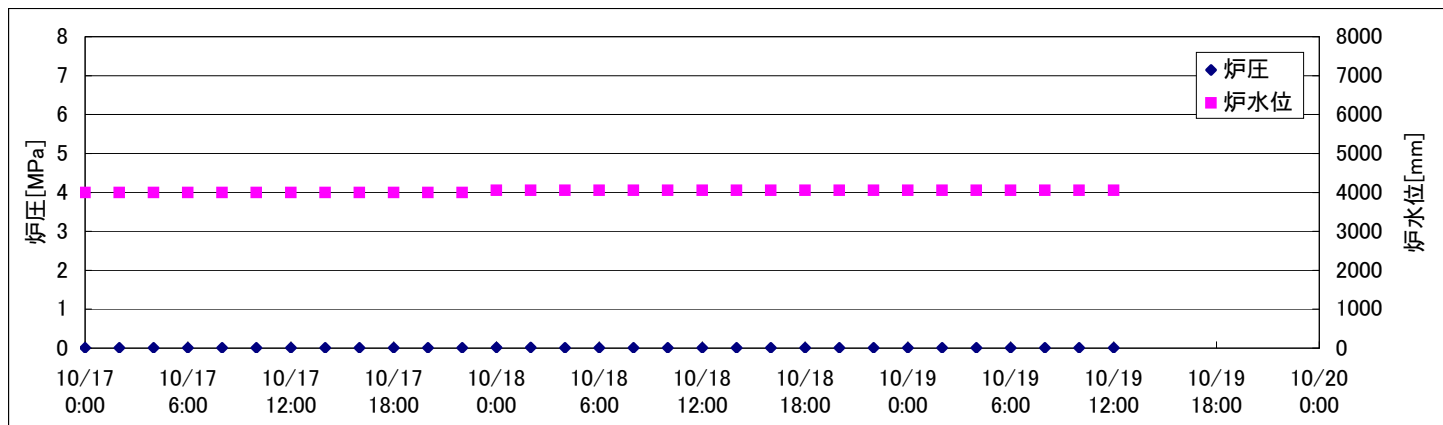
# 2F-1号機



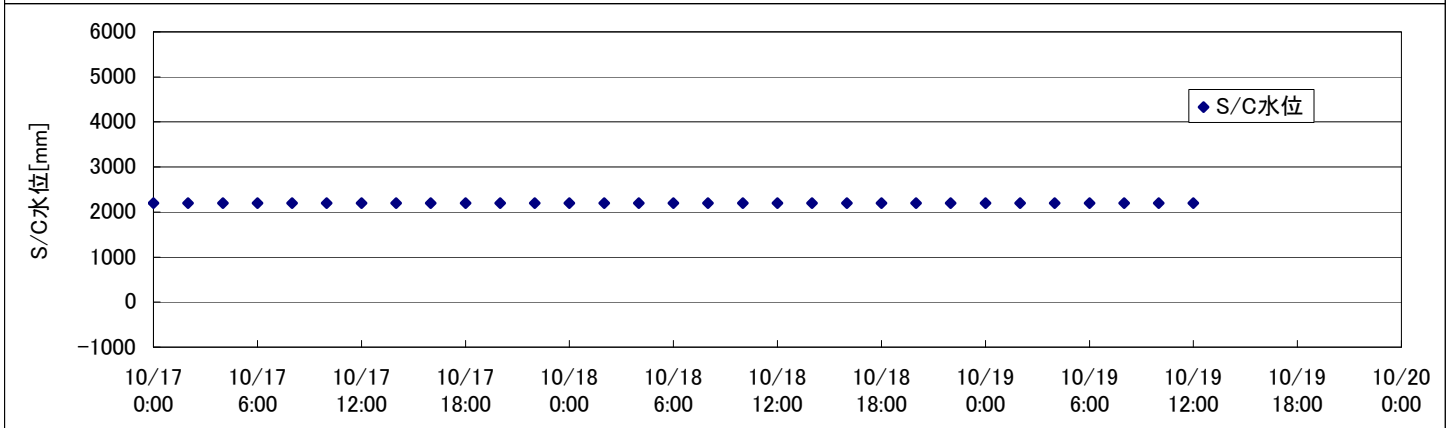
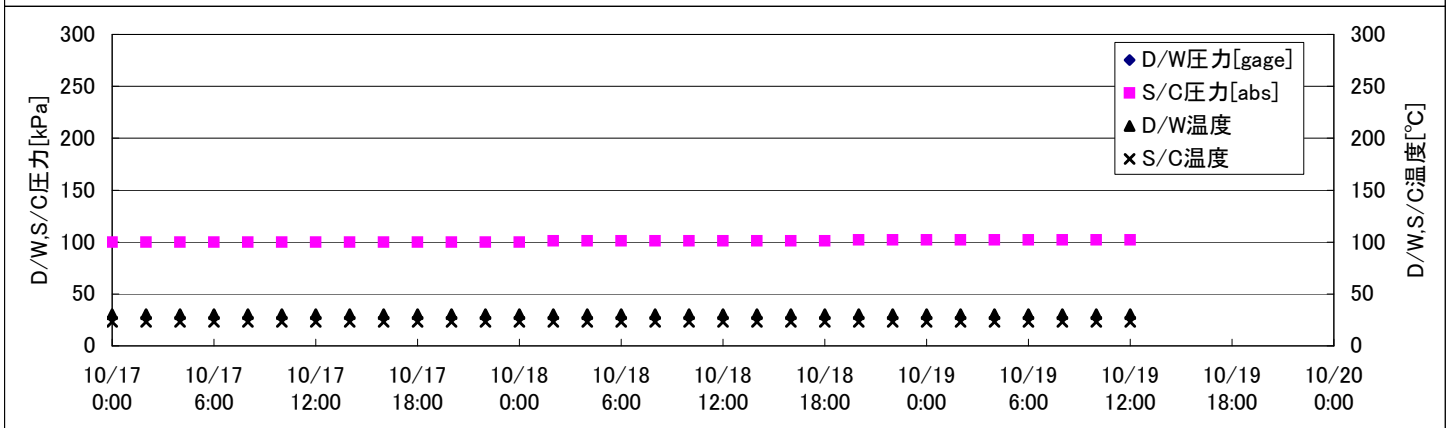
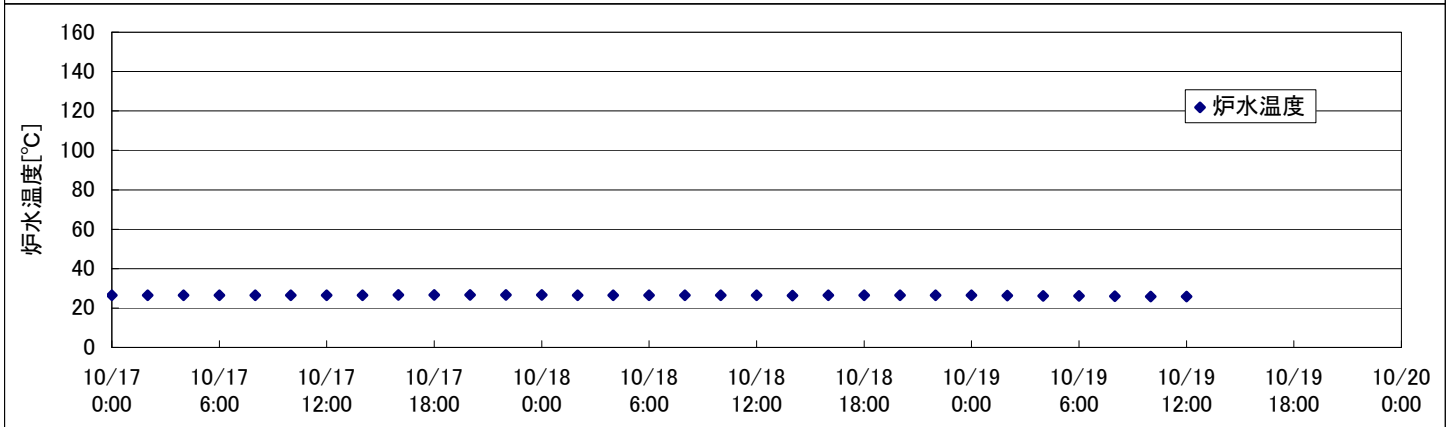
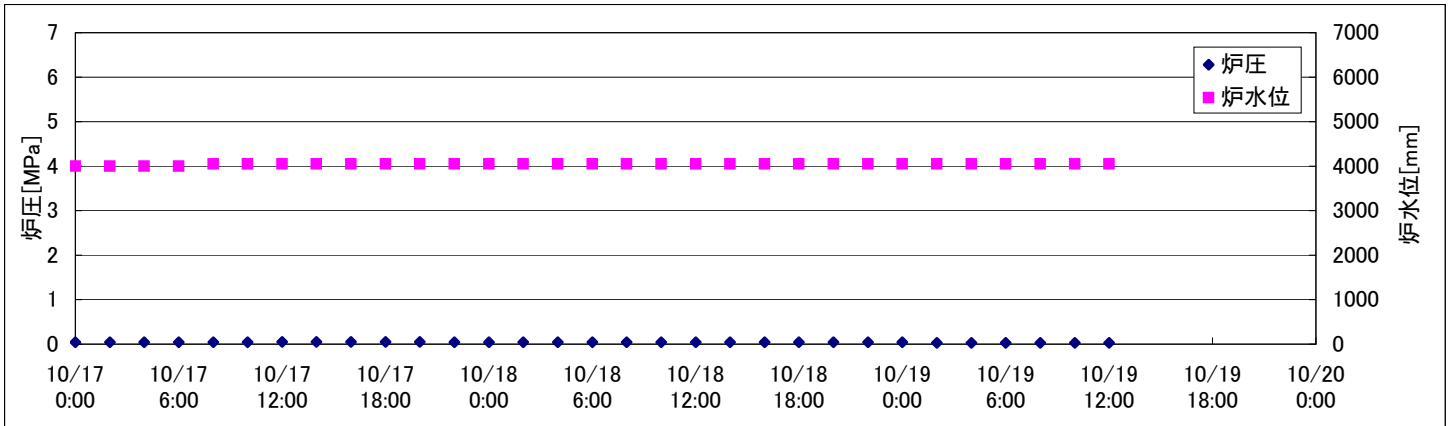
## 2F-2号機



## 2F-3号機



## 2F-4号機









## 2F-4号機

※燃料頂部(TAF)からの水位 = 炉水位 + 4200[mm]

時間	炉圧 [MPa (gage)]	炉水位 [mm] 停止時	炉水温度[°C]	D/W圧力 [kPa(gage)]	D/W温度 [°C]	S/C圧力 [kPa(abs)]	S/C水位 [mm]	S/C温度 [°C]
2011/10/17 0:00	0.04	4000	26.5		30.6	100	2200	23
2011/10/17 2:00	0.04	4000	26.5		30.6	100	2200	23
2011/10/17 4:00	0.04	4000	26.5		30.6	100	2200	23
2011/10/17 6:00	0.04	4000	26.5		30.6	100	2200	23
2011/10/17 8:00	0.04	4050	26.5		30.6	100	2200	23
2011/10/17 10:00	0.04	4050	26.5		30.6	100	2200	23
2011/10/17 12:00	0.05	4050	26.5		30.6	100	2200	23
2011/10/17 14:00	0.05	4050	26.5		30.6	100	2200	23
2011/10/17 16:00	0.05	4050	26.6		30.6	100	2200	23
2011/10/17 18:00	0.05	4050	26.6		30.6	100	2200	23
2011/10/17 20:00	0.05	4050	26.6		30.6	100	2200	23
2011/10/17 22:00	0.04	4050	26.6		30.5	100	2200	23
2011/10/18 0:00	0.04	4050	26.6		30.5	100	2200	23
2011/10/18 2:00	0.04	4050	26.5		30.5	101	2200	23
2011/10/18 4:00	0.04	4050	26.5		30.6	101	2200	23
2011/10/18 6:00	0.04	4050	26.5		30.6	101	2200	23
2011/10/18 8:00	0.04	4050	26.4		30.6	101	2200	23
2011/10/18 10:00	0.04	4050	26.4		30.5	101	2200	23
2011/10/18 12:00	0.04	4050	26.4		30.6	101	2200	23
2011/10/18 14:00	0.04	4050	26.3		30.6	101	2200	23
2011/10/18 16:00	0.04	4050	26.4		30.5	101	2200	23
2011/10/18 18:00	0.04	4050	26.4		30.5	101	2200	23
2011/10/18 20:00	0.04	4050	26.4		30.5	102	2200	23
2011/10/18 22:00	0.04	4050	26.4		30.5	102	2200	23
2011/10/19 0:00	0.04	4050	26.4		30.5	102	2200	23
2011/10/19 2:00	0.03	4050	26.3		30.4	102	2200	23
2011/10/19 4:00	0.03	4050	26.2		30.4	102	2200	23
2011/10/19 6:00	0.03	4050	26.1		30.4	102	2200	23
2011/10/19 8:00	0.03	4050	26.0		30.5	102	2200	23
2011/10/19 10:00	0.03	4050	25.9		30.4	102	2200	23
<b>2011/10/19 12:00</b>	<b>0.03</b>	<b>4050</b>	<b>25.8</b>		<b>30.4</b>	<b>102</b>	<b>2200</b>	<b>23</b>
2011/10/19 14:00								
2011/10/19 16:00								
2011/10/19 18:00								
2011/10/19 20:00								
2011/10/19 22:00								
2011/10/20 0:00								

D/W圧力について

・パーソナルエアロックドア開放中であるため、9/6 10:00 より記載せず