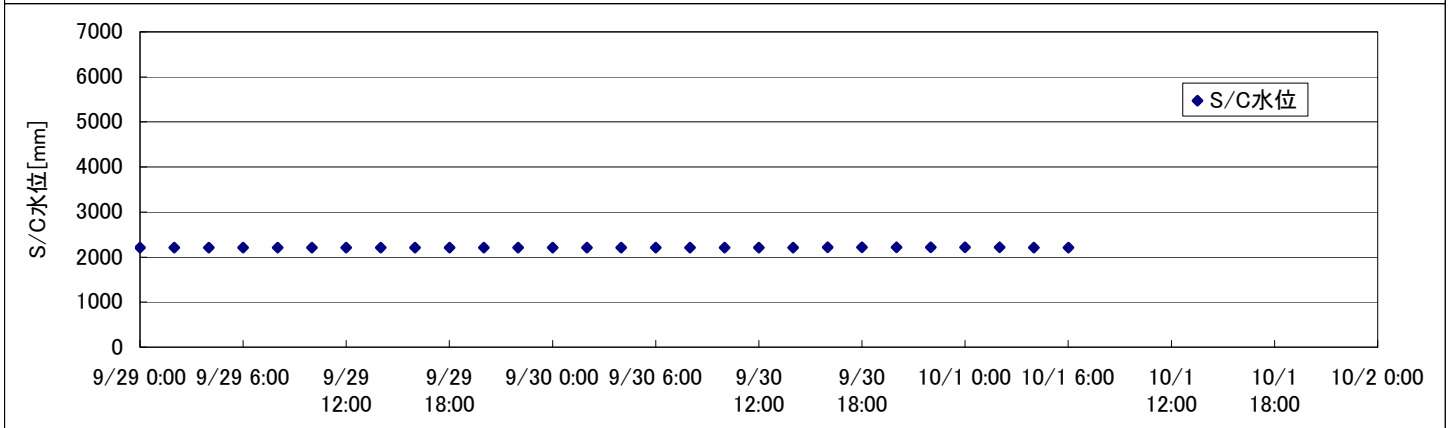
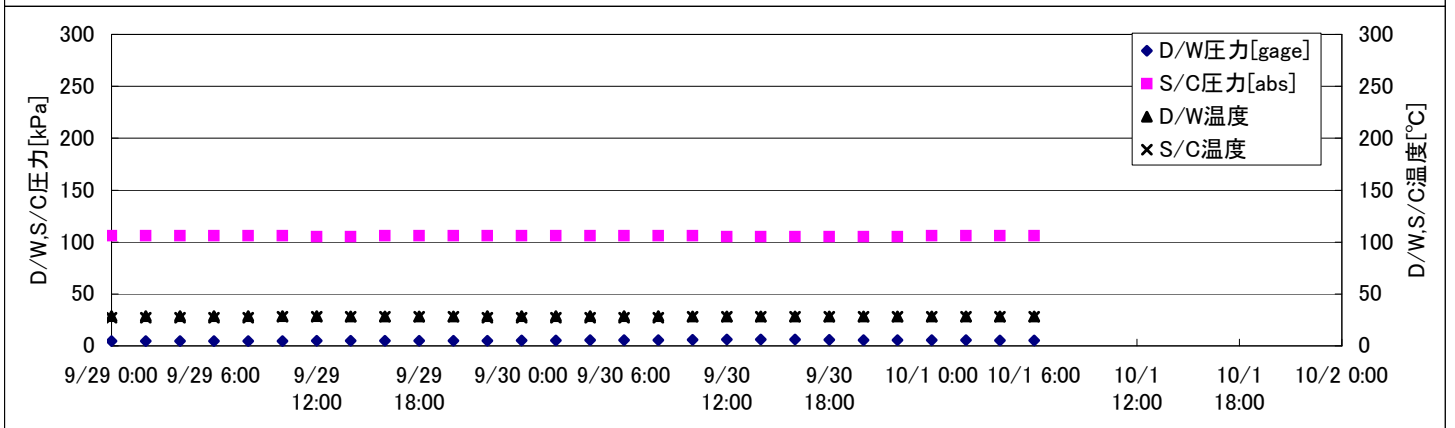
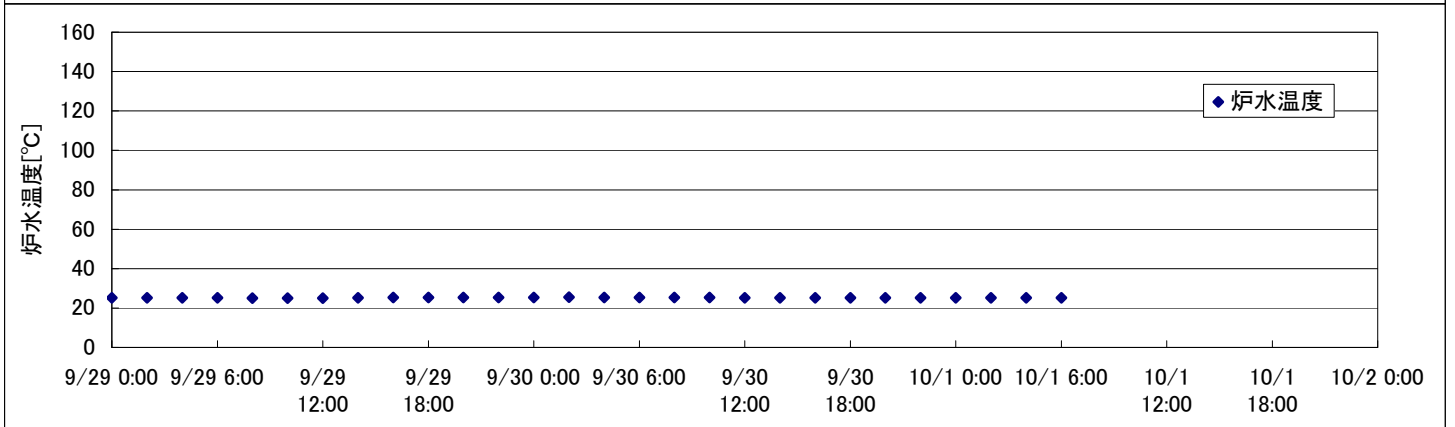
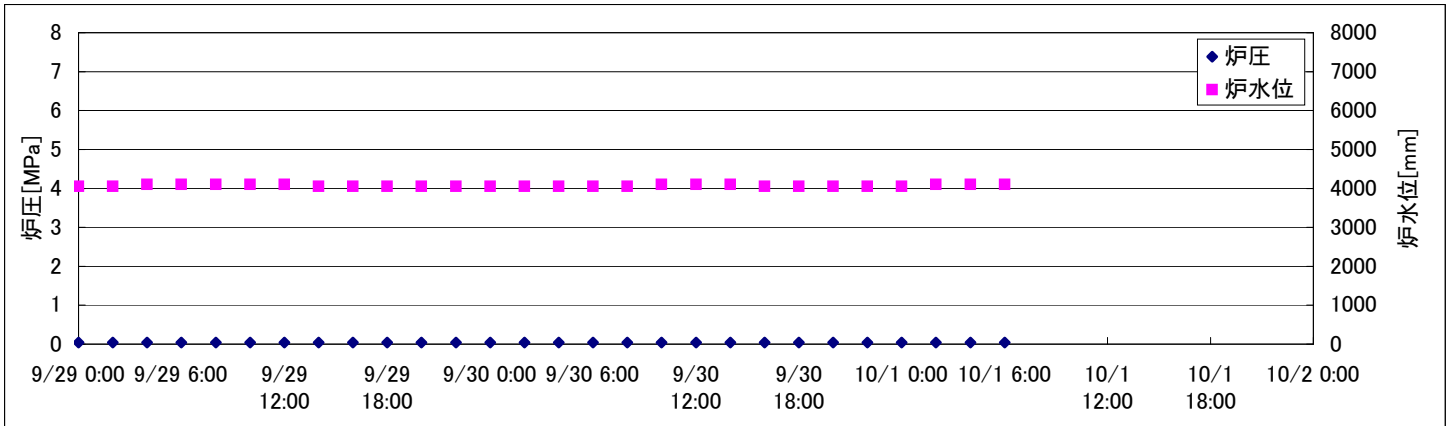
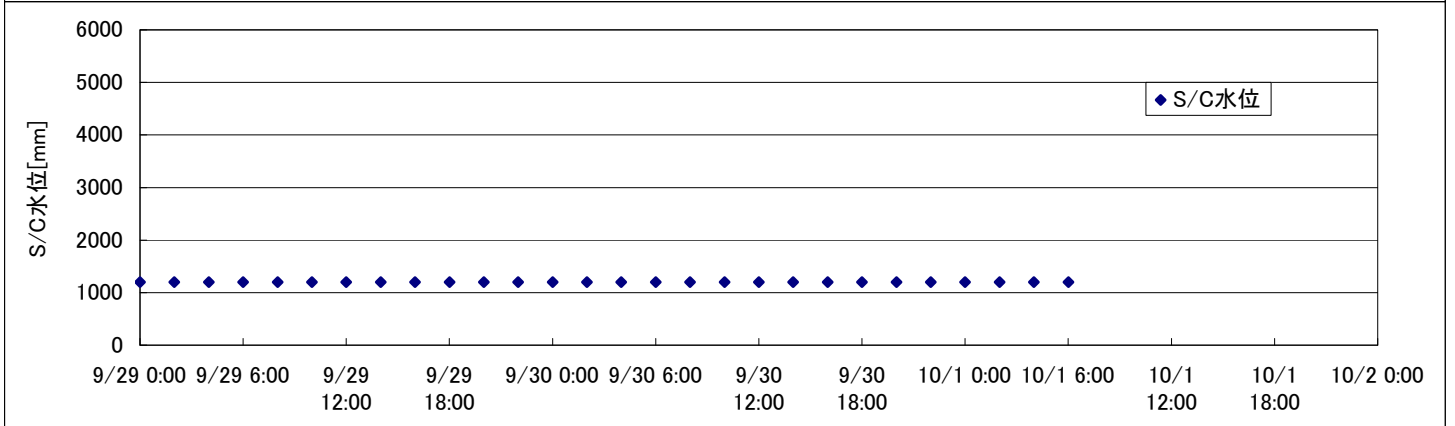
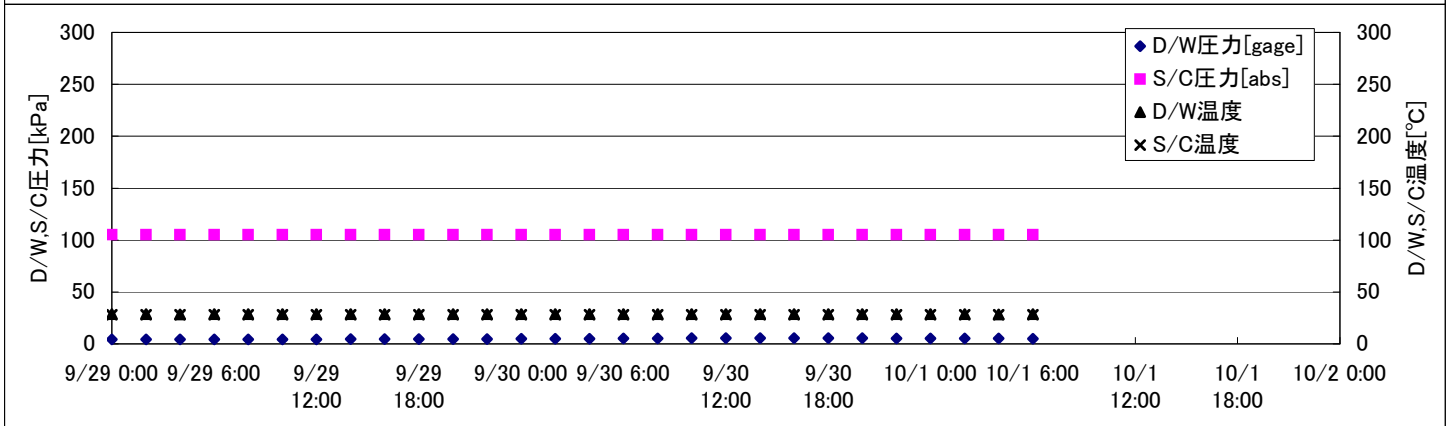
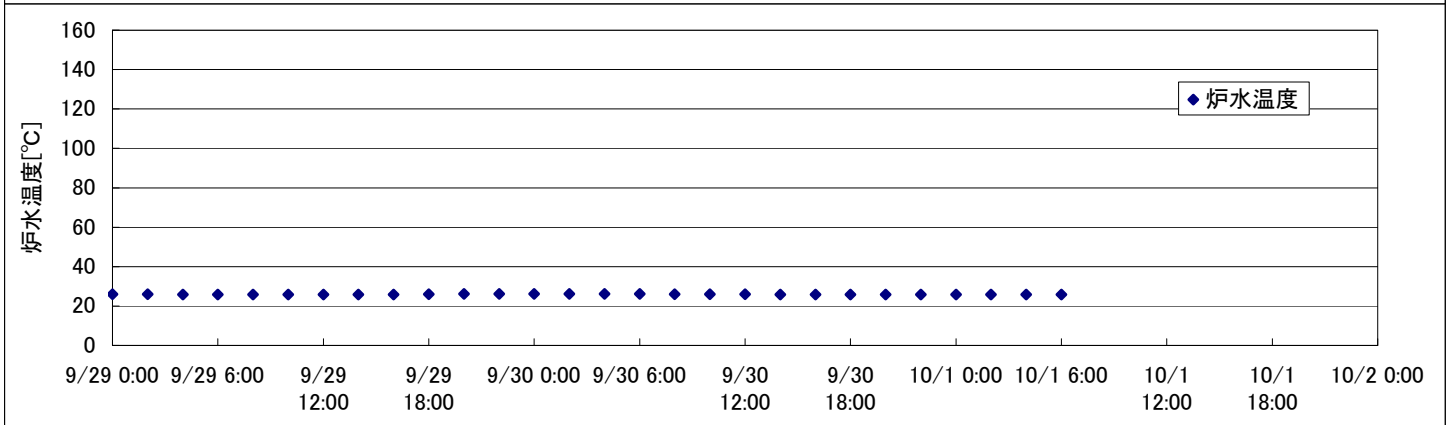
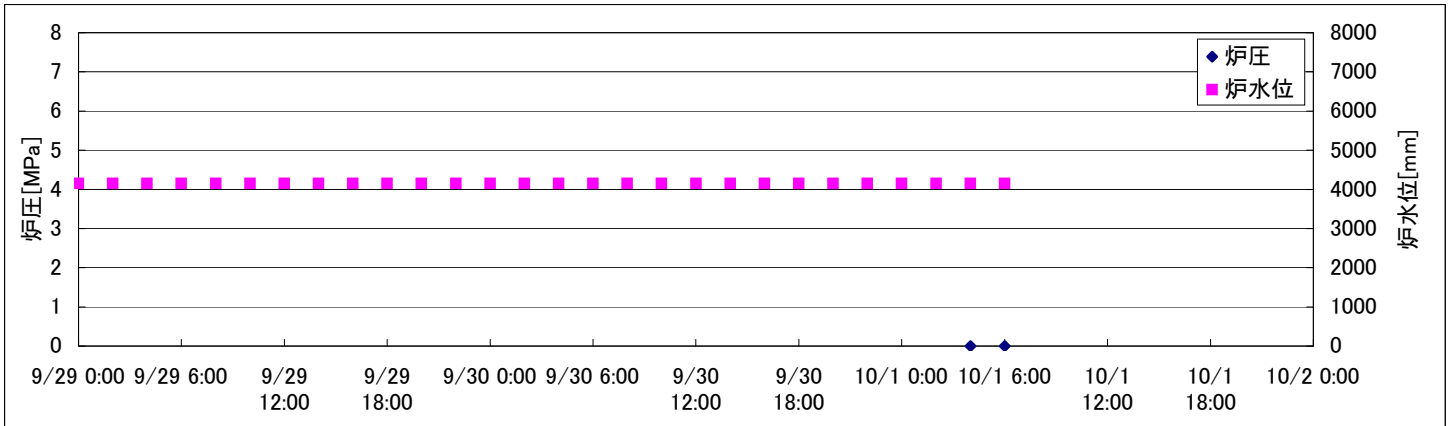


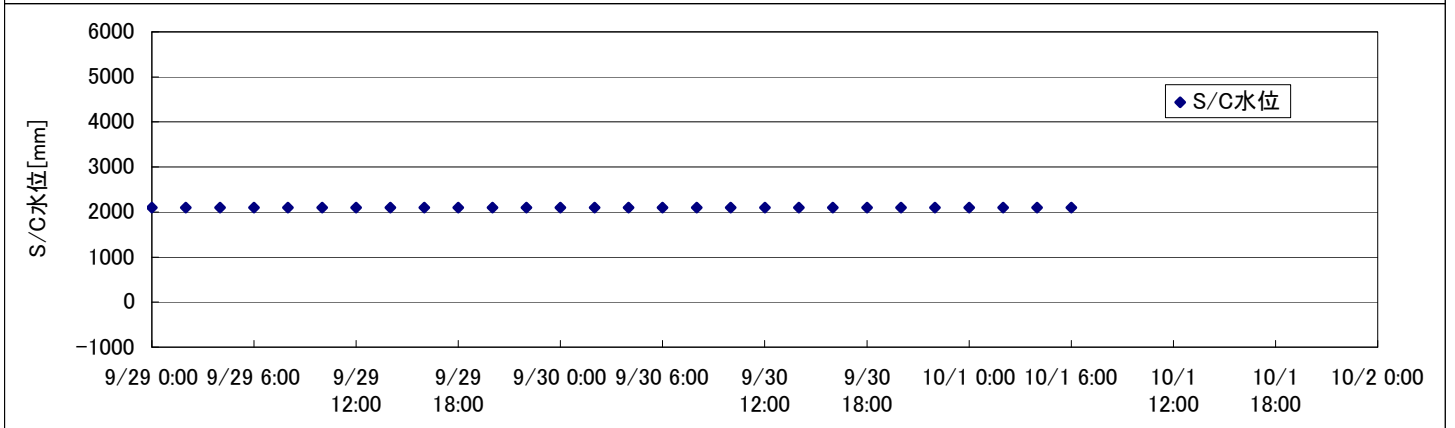
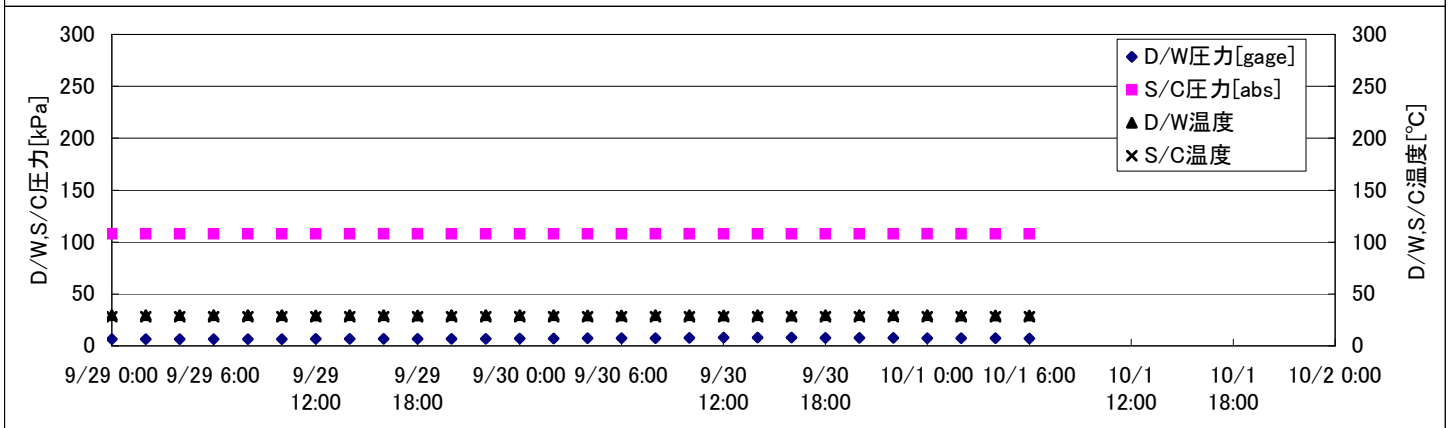
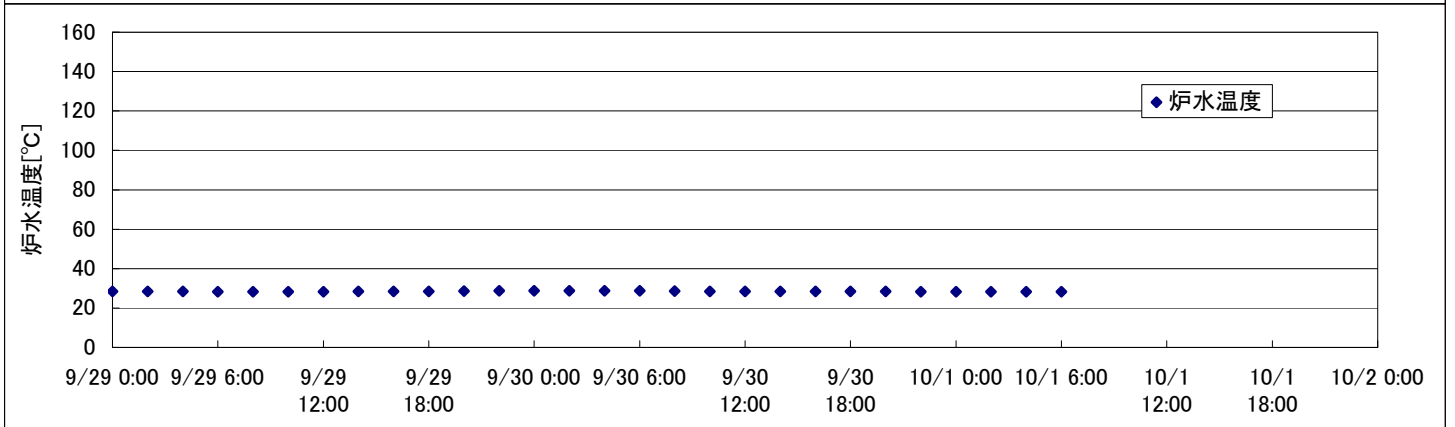
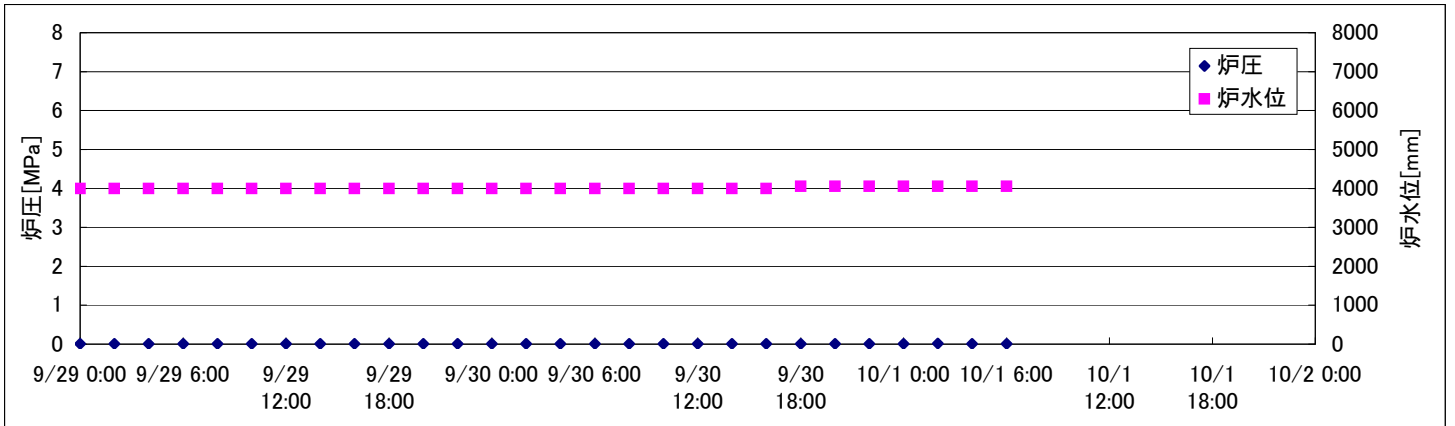
# 2F-1号機



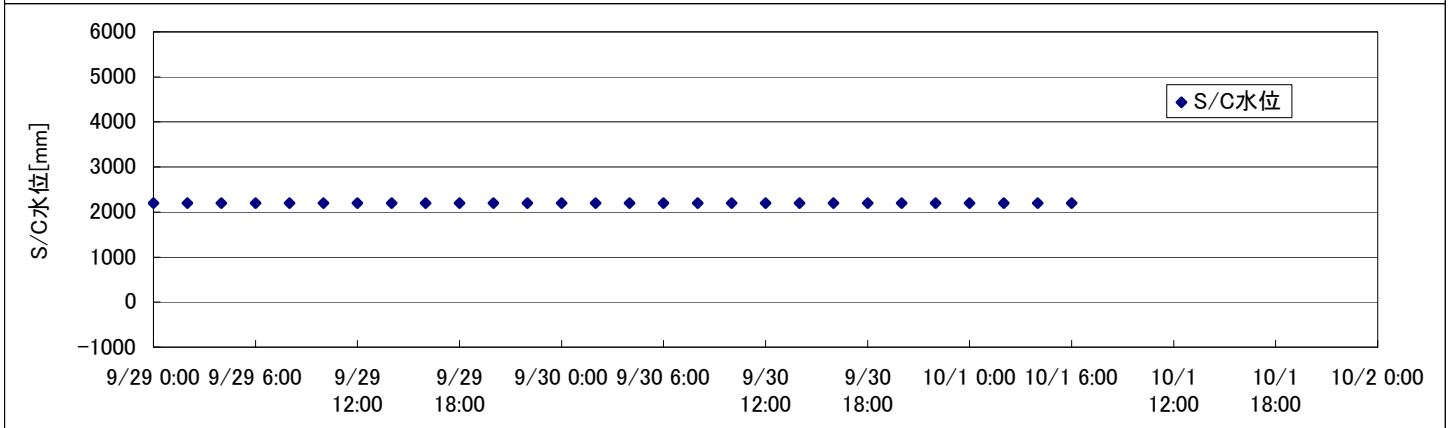
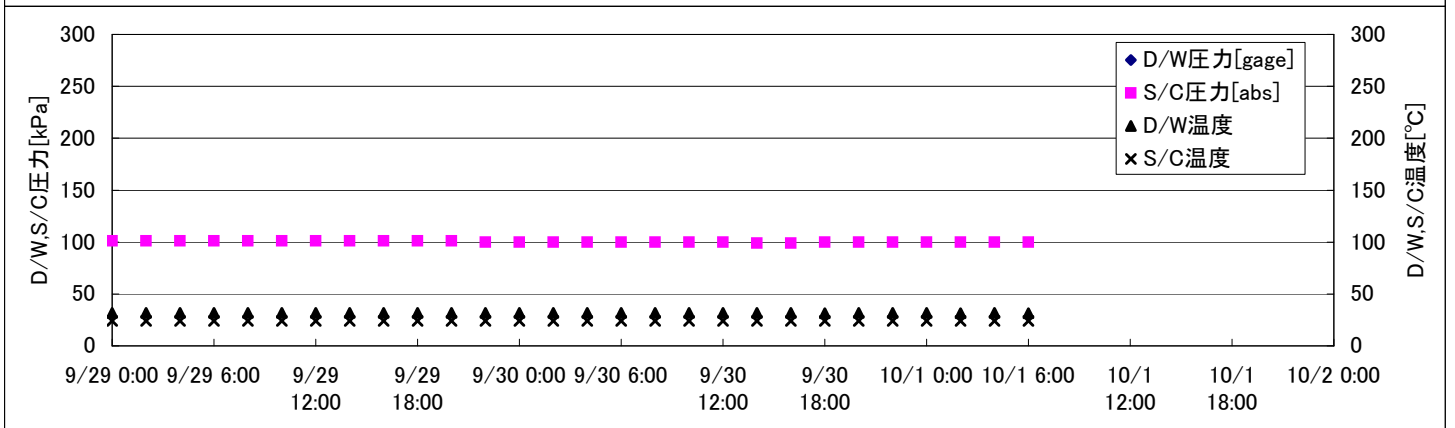
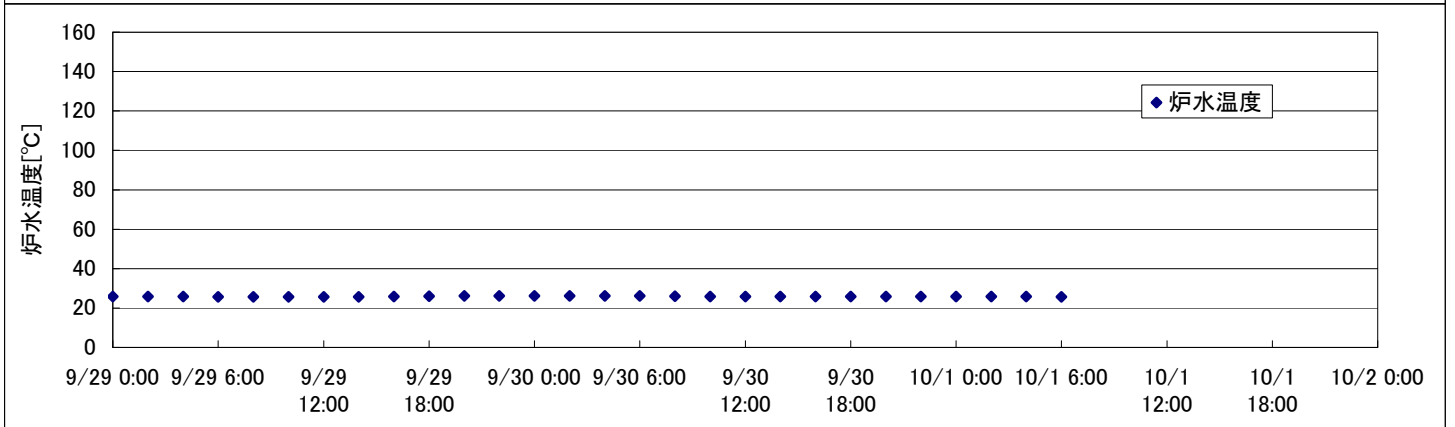
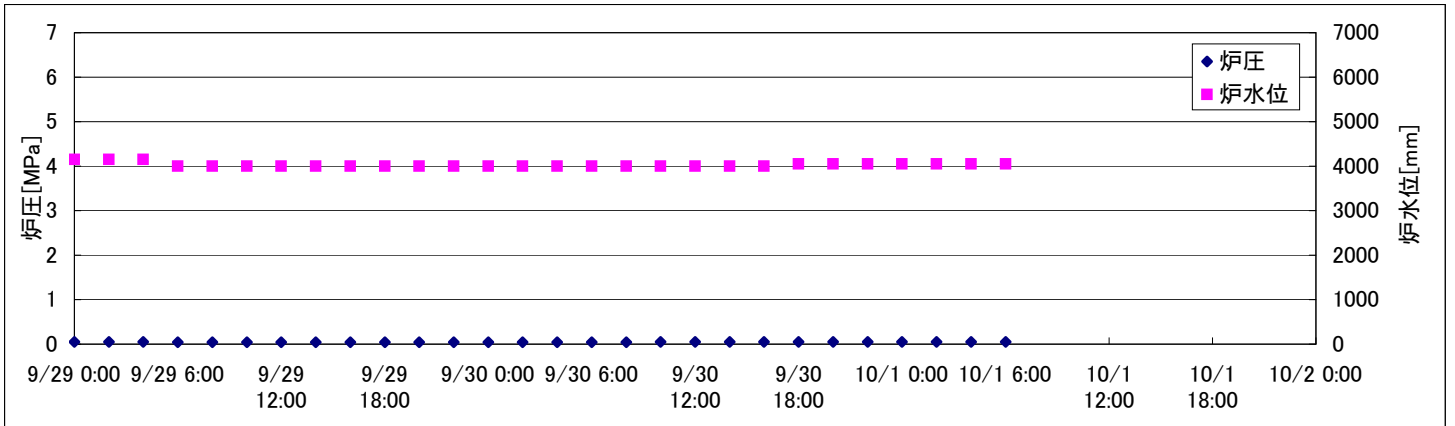
## 2F-2号機



## 2F-3号機



## 2F-4号機









## 2F-4号機

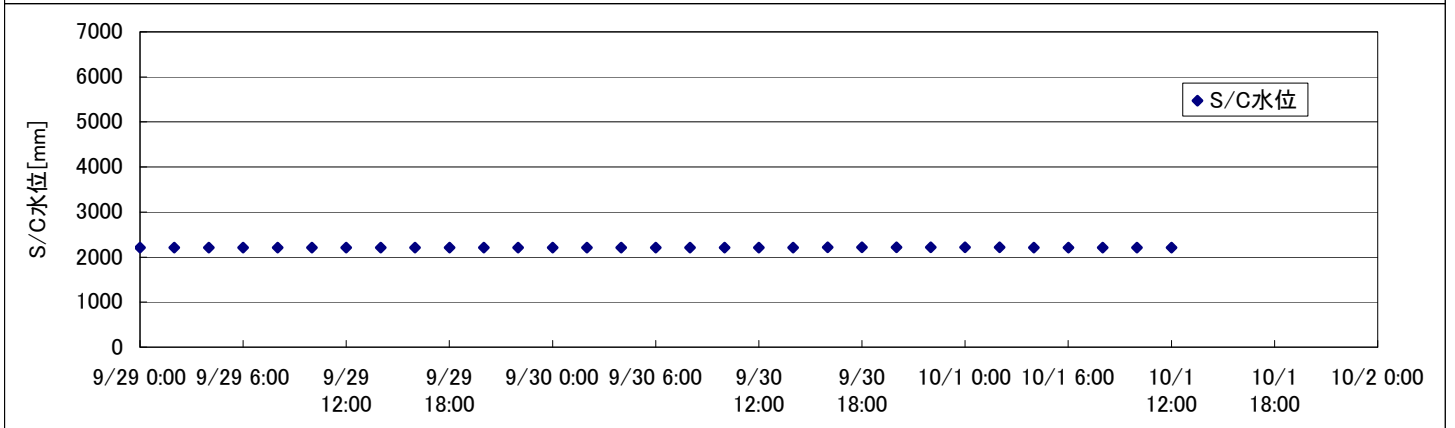
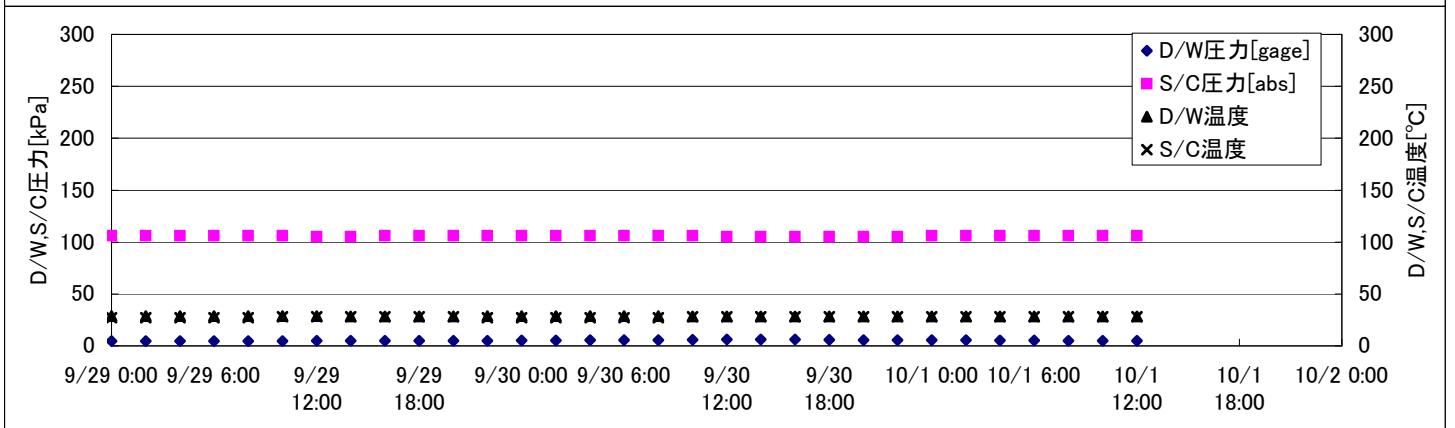
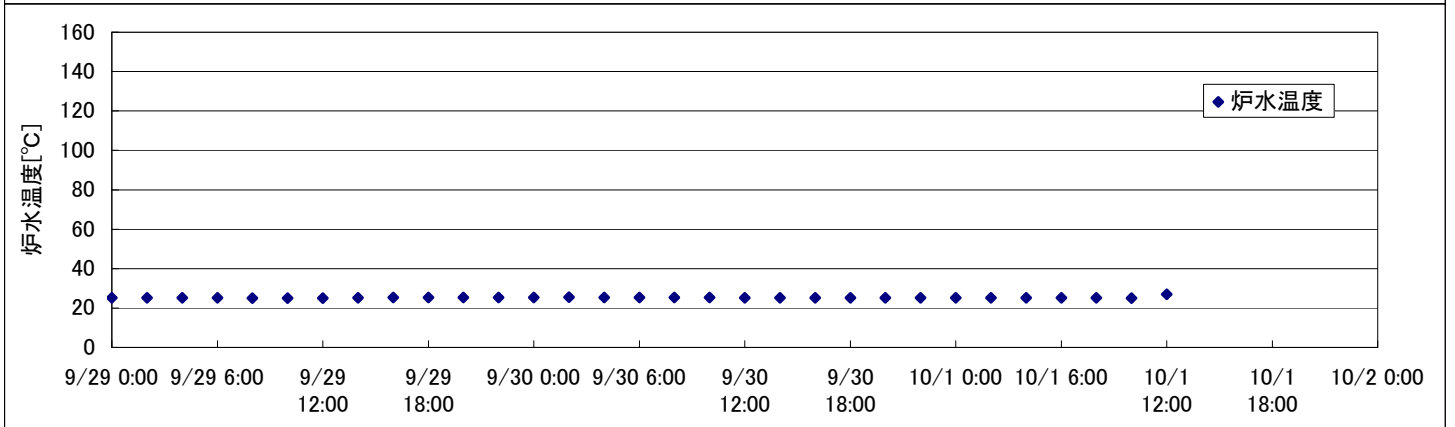
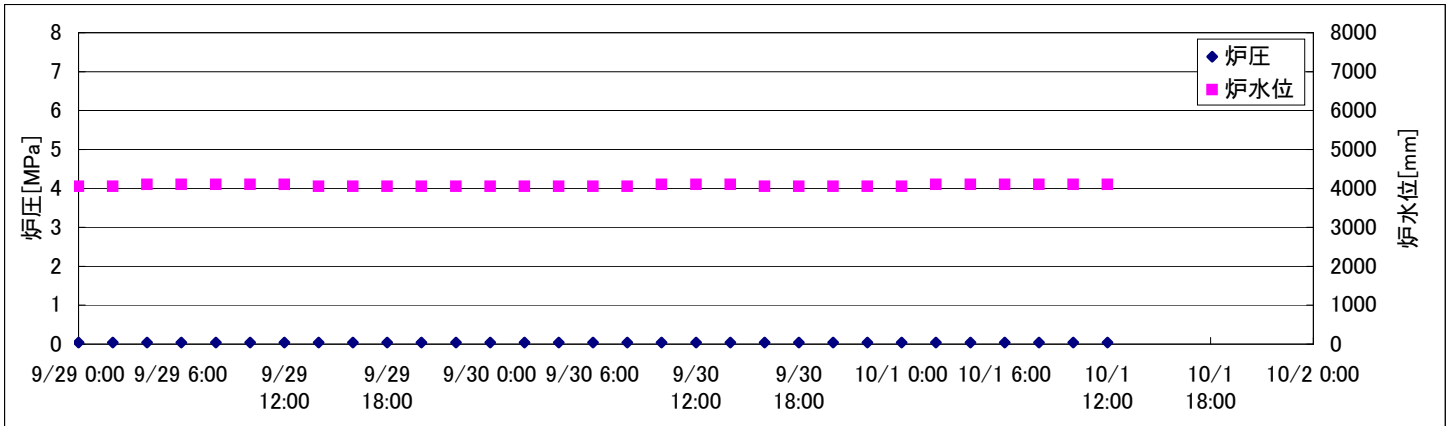
※燃料頂部(TAF)からの水位=炉水位+4200[mm]

時間	炉圧 [MPa (gage)]	炉水位 [mm] 停止時	炉水温度[°C]	D/W圧力 [kPa(gage)]	D/W温度 [°C]	S/C圧力 [kPa(abs)]	S/C水位 [mm]	S/C温度 [°C]
2011/9/29 0:00	0.05	4150	25.9		31.8	101	2200	24
2011/9/29 2:00	0.05	4150	25.8		31.9	101	2200	24
2011/9/29 4:00	0.05	4150	25.8		31.8	101	2200	24
2011/9/29 6:00	0.04	4000	25.7		31.8	101	2200	24
2011/9/29 8:00	0.04	4000	25.7		31.8	101	2200	24
2011/9/29 10:00	0.04	4000	25.6		31.8	101	2200	24
2011/9/29 12:00	0.04	4000	25.6		31.7	101	2200	24
2011/9/29 14:00	0.04	4000	25.7		31.8	101	2200	24
2011/9/29 16:00	0.04	4000	25.8		31.8	101	2200	24
2011/9/29 18:00	0.04	4000	26.0		31.8	101	2200	24
2011/9/29 20:00	0.04	4000	26.1		31.8	101	2200	24
2011/9/29 22:00	0.04	4000	26.1		31.8	100	2200	24
2011/9/30 0:00	0.04	4000	26.1		31.8	100	2200	24
2011/9/30 2:00	0.04	4000	26.1		31.8	100	2200	24
2011/9/30 4:00	0.04	4000	26.1		31.8	100	2200	24
2011/9/30 6:00	0.04	4000	26.1		31.8	100	2200	24
2011/9/30 8:00	0.04	4000	26.0		31.8	100	2200	24
2011/9/30 10:00	0.05	4000	25.9		31.8	100	2200	24
2011/9/30 12:00	0.05	4000	25.9		31.8	100	2200	24
2011/9/30 14:00	0.05	4000	25.9		31.8	99	2200	24
2011/9/30 16:00	0.05	4000	25.9		31.8	99	2200	24
2011/9/30 18:00	0.05	4050	25.8		31.6	100	2200	24
2011/9/30 20:00	0.05	4050	25.8		31.7	100	2200	24
2011/9/30 22:00	0.05	4050	25.8		31.7	100	2200	24
2011/10/1 0:00	0.05	4050	25.8		31.8	100	2200	24
2011/10/1 2:00	0.05	4050	25.8		31.6	100	2200	24
2011/10/1 4:00	0.05	4050	25.8		31.7	100	2200	24
<b>2011/10/1 6:00</b>	<b>0.05</b>	<b>4050</b>	<b>25.7</b>		<b>31.6</b>	<b>100</b>	<b>2200</b>	<b>24</b>
2011/10/1 8:00								
2011/10/1 10:00								
2011/10/1 12:00								
2011/10/1 14:00								
2011/10/1 16:00								
2011/10/1 18:00								
2011/10/1 20:00								
2011/10/1 22:00								
2011/10/2 0:00								

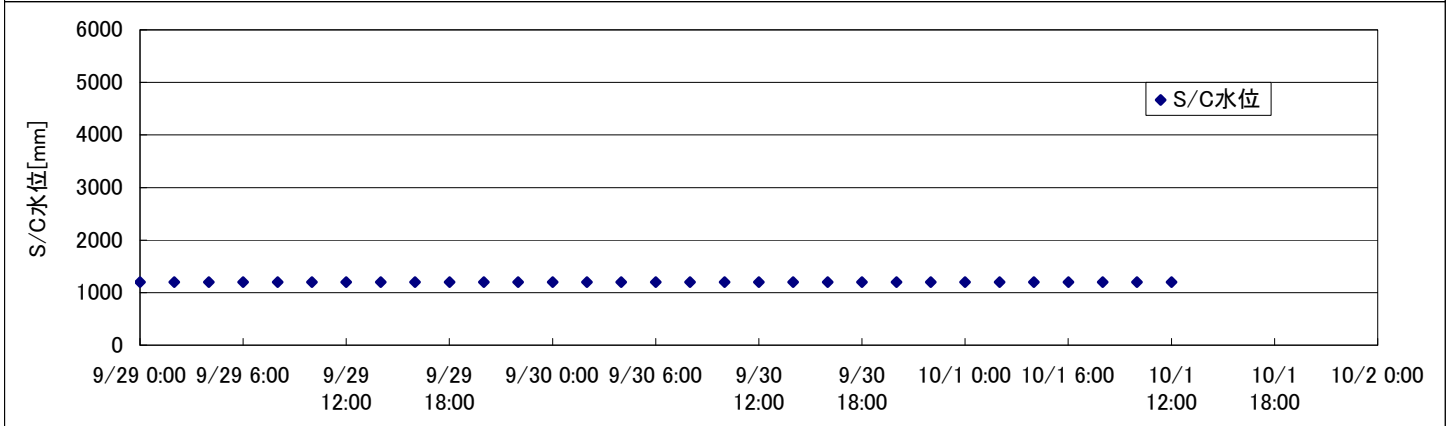
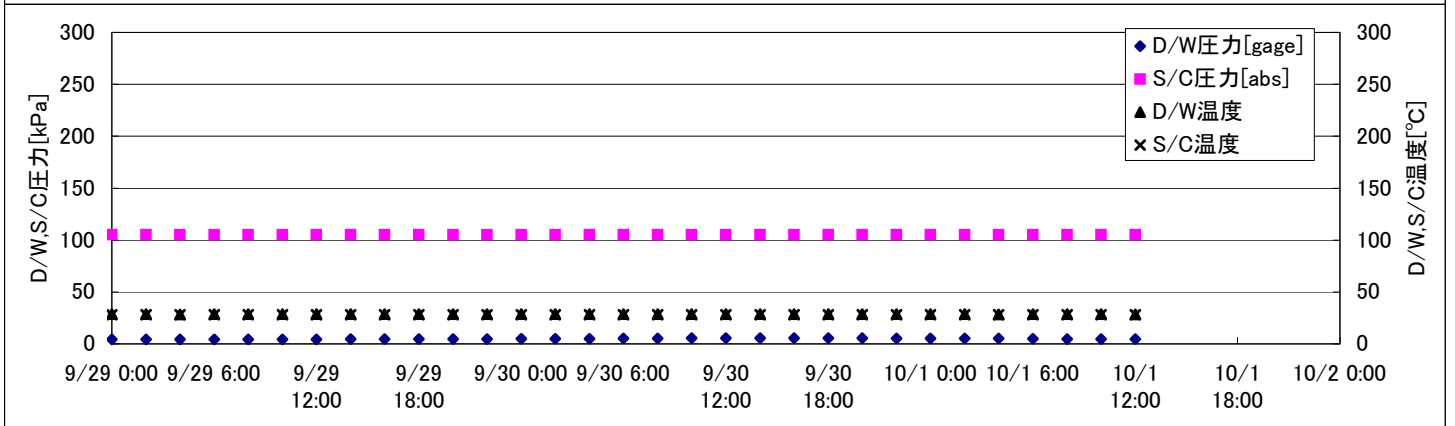
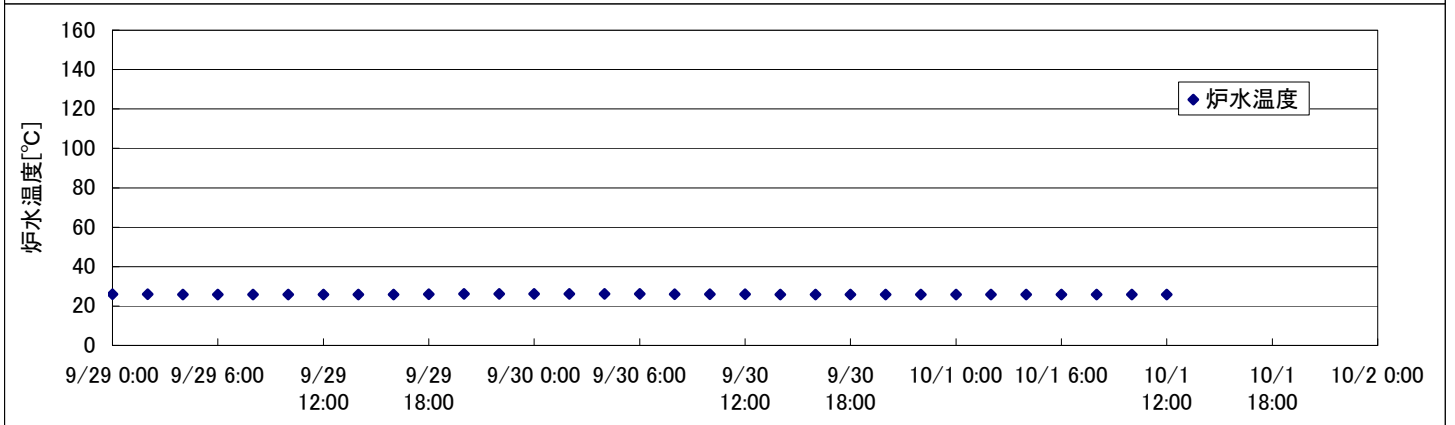
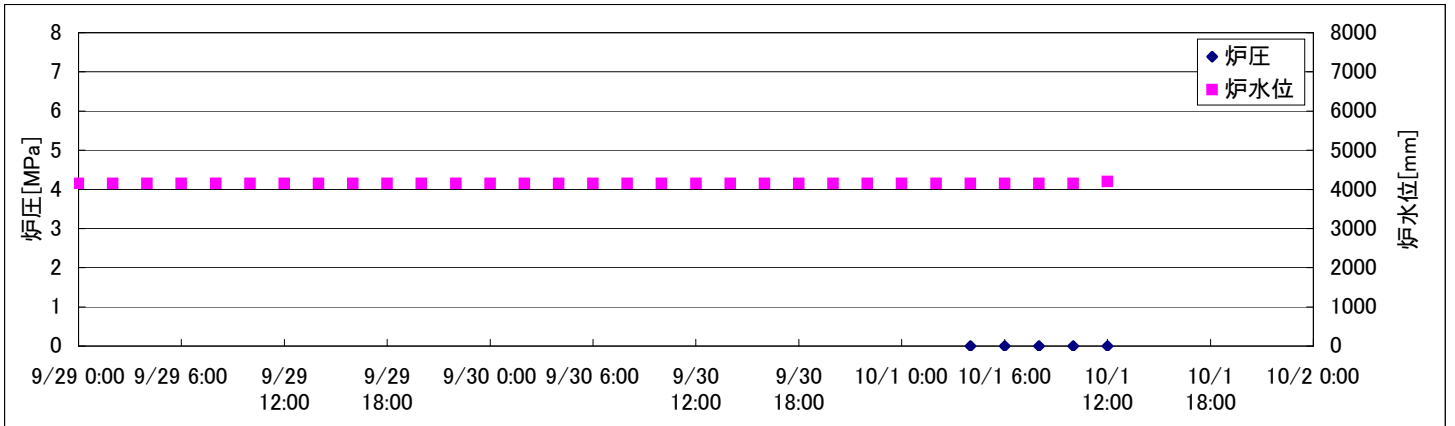
D/W圧力について  
・パーソナルエアロックドア開放中であるため、9/6 10:00 より記載せず



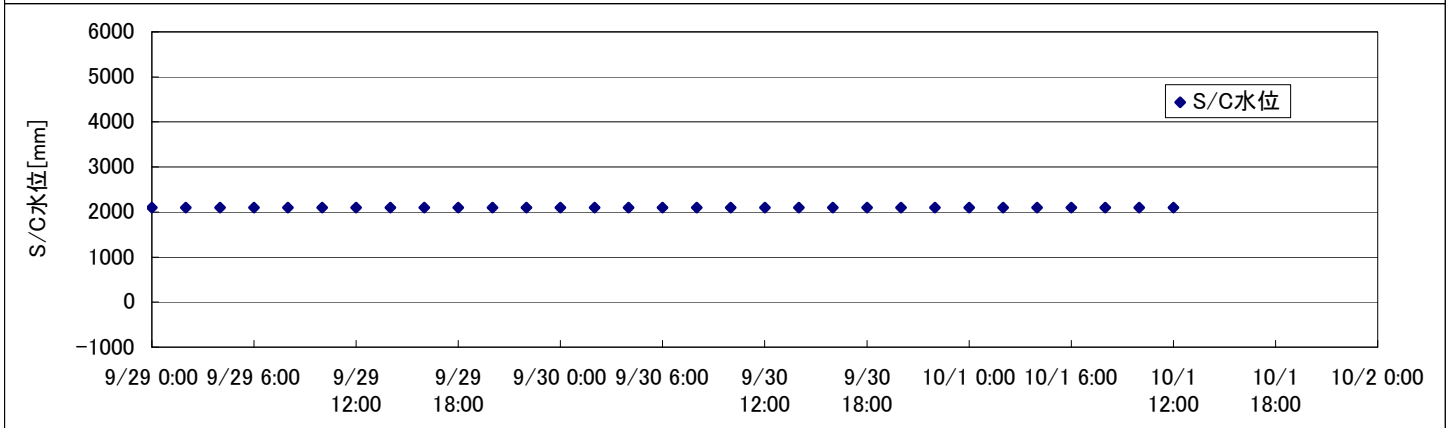
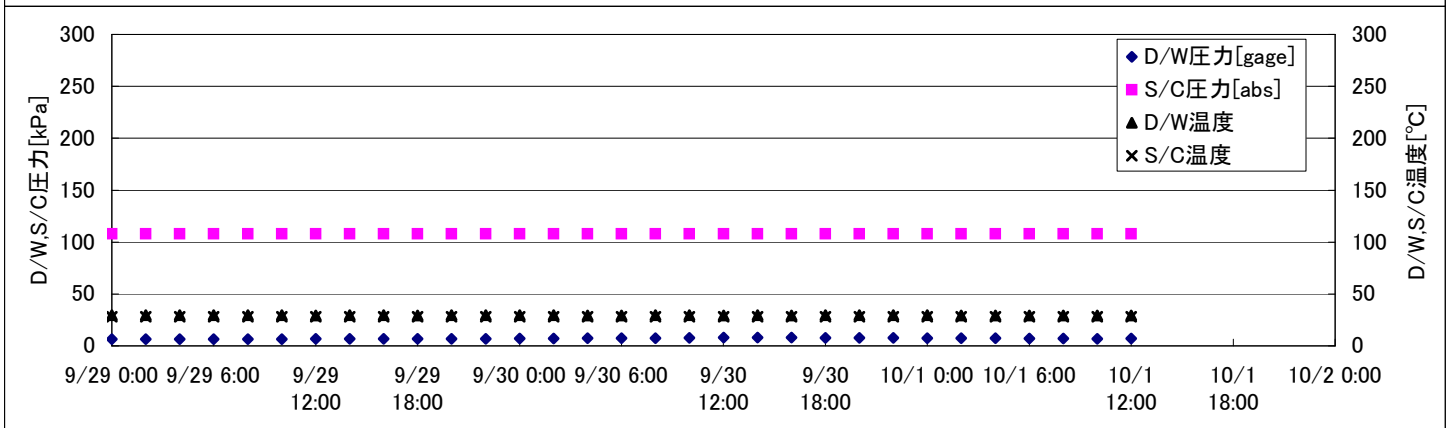
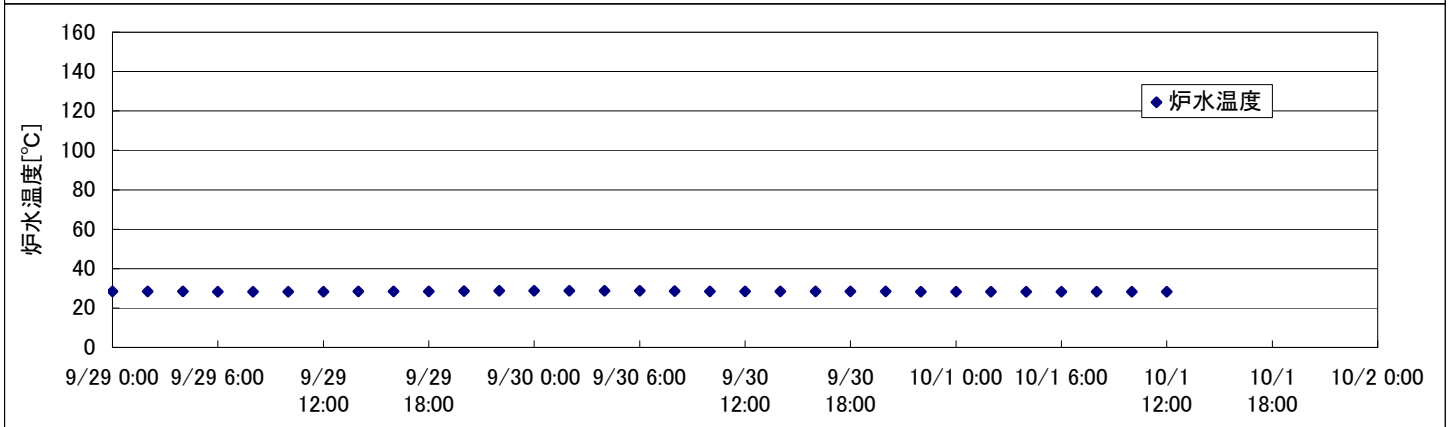
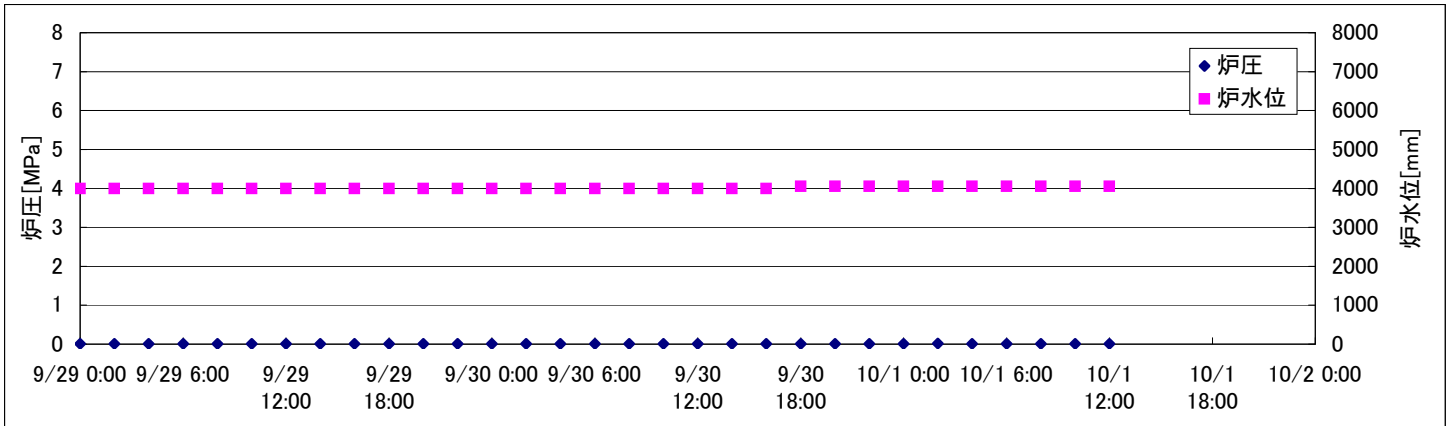
# 2F-1号機



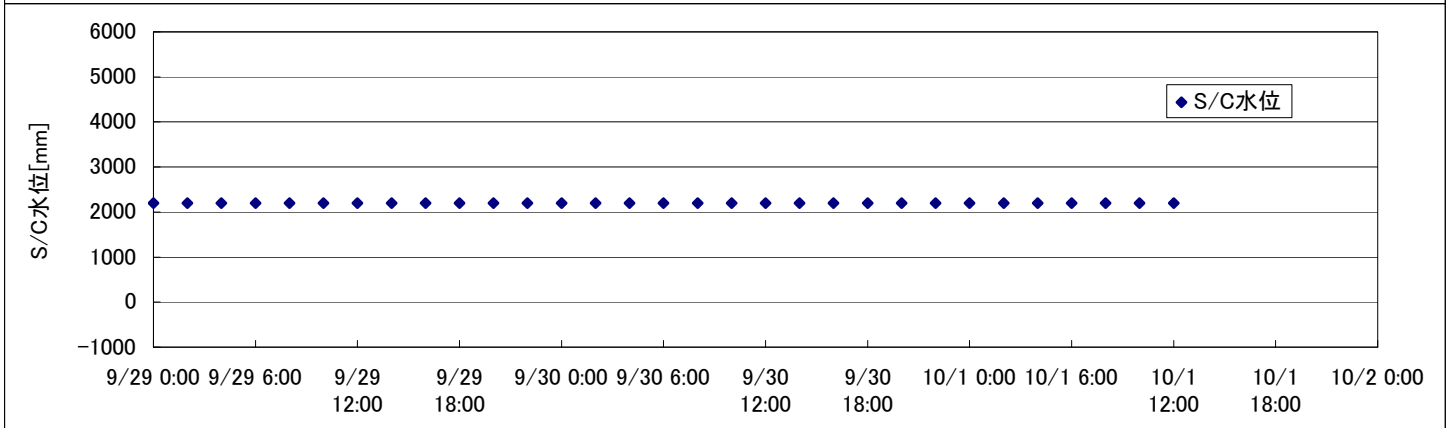
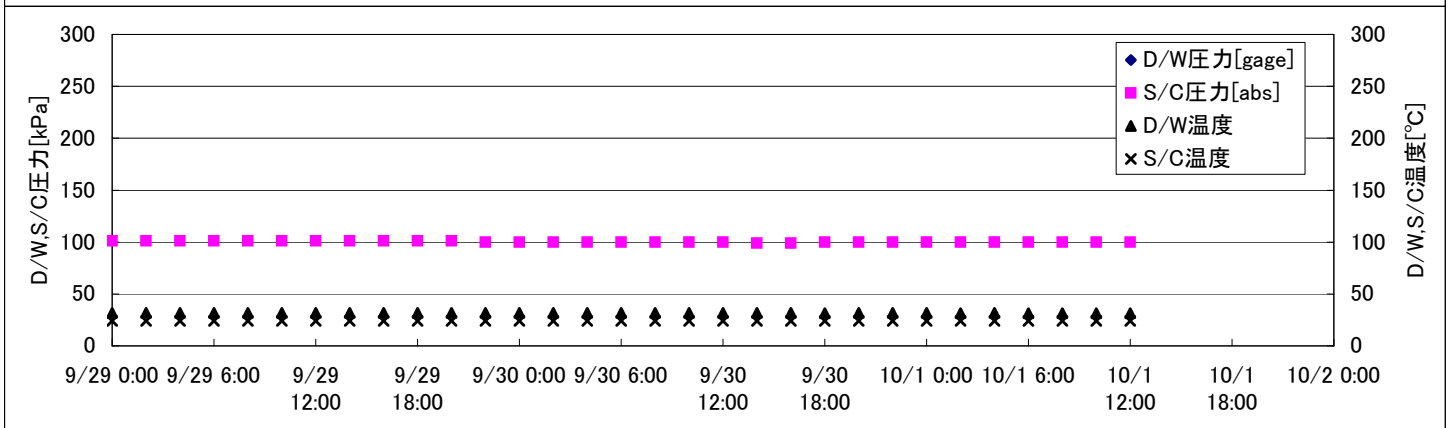
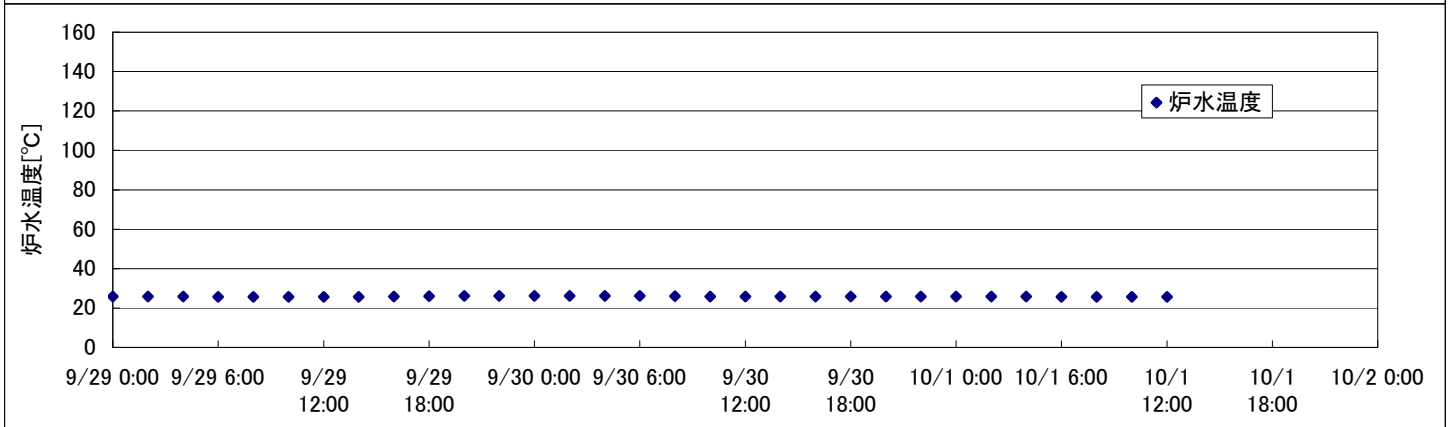
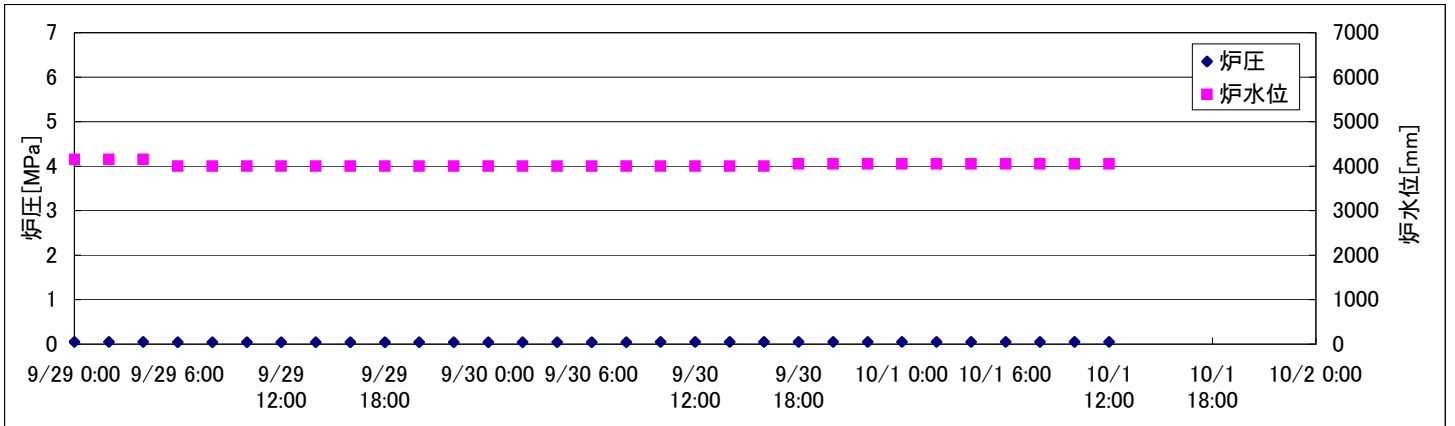
## 2F-2号機



## 2F-3号機



## 2F-4号機



## 2F-1号機

※燃料頂部(TAF)からの水位=炉水位+4200[mm]

時間	炉圧 [MPa (gage)]	炉水位 [mm] 停止時	炉水温度[°C]	D/W圧力 [kPa(gage)]	D/W温度 [°C]	S/C圧力 [kPa(abs)]	S/C水位 [mm]	S/C温度 [°C]
2011/9/29 0:00	0.04	4050	25.2	5	28.7	106	2213	27
2011/9/29 2:00	0.04	4050	25.2	5	28.7	106	2213	27
2011/9/29 4:00	0.04	4100	25.1	5	28.7	106	2212	27
2011/9/29 6:00	0.04	4100	25.1	5	28.7	106	2212	27
2011/9/29 8:00	0.04	4100	25.0	5	28.7	106	2212	27
2011/9/29 10:00	0.04	4100	25.0	5	28.6	106	2213	28
2011/9/29 12:00	0.04	4100	25.0	5	28.6	105	2213	28
2011/9/29 14:00	0.04	4050	25.1	5	28.5	105	2213	28
2011/9/29 16:00	0.04	4050	25.3	5	28.5	106	2213	28
2011/9/29 18:00	0.04	4050	25.4	5	28.5	106	2213	28
2011/9/29 20:00	0.04	4050	25.4	5	28.5	106	2212	28
2011/9/29 22:00	0.04	4050	25.4	5	28.6	106	2212	27
2011/9/30 0:00	0.04	4050	25.4	5	28.6	106	2212	27
2011/9/30 2:00	0.04	4050	25.5	5	28.7	106	2212	27
2011/9/30 4:00	0.04	4050	25.4	5	28.6	106	2212	27
2011/9/30 6:00	0.04	4050	25.4	6	28.6	106	2212	27
2011/9/30 8:00	0.04	4050	25.3	6	28.6	106	2212	27
2011/9/30 10:00	0.04	4100	25.3	6	28.5	106	2213	28
2011/9/30 12:00	0.04	4100	25.2	6	28.5	105	2213	28
2011/9/30 14:00	0.04	4100	25.2	6	28.4	105	2213	28
2011/9/30 16:00	0.04	4050	25.2	6	28.4	105	2214	28
2011/9/30 18:00	0.04	4050	25.1	6	28.5	105	2214	28
2011/9/30 20:00	0.04	4050	25.1	6	28.4	105	2214	28
2011/9/30 22:00	0.04	4050	25.1	6	28.4	105	2214	28
2011/10/1 0:00	0.04	4050	25.1	6	28.4	106	2214	28
2011/10/1 2:00	0.04	4100	25.1	5	28.4	106	2214	28
2011/10/1 4:00	0.04	4100	25.1	5	28.4	106	2213	28
2011/10/1 6:00	0.04	4100	25.1	5	28.4	106	2213	28
2011/10/1 8:00	0.04	4100	25.1	5	28.4	106	2213	28
2011/10/1 10:00	0.04	4100	25.0	5	28.4	106	2213	28
<b>2011/10/1 12:00</b>	<b>0.04</b>	<b>4100</b>	<b>27.0</b>	<b>5</b>	<b>28.4</b>	<b>106</b>	<b>2213</b>	<b>28</b>
2011/10/1 14:00								
2011/10/1 16:00								
2011/10/1 18:00								
2011/10/1 20:00								
2011/10/1 22:00								
2011/10/2 0:00								

RHRCポンプ(B)の点検作業のため  
・10/1 9:58 RHR B系停止





## 2F-4号機

※燃料頂部(TAF)からの水位=炉水位+4200[mm]

時間	炉圧 [MPa (gage)]	炉水位 [mm] 停止時	炉水温度[°C]	D/W圧力 [kPa(gage)]	D/W温度 [°C]	S/C圧力 [kPa(abs)]	S/C水位 [mm]	S/C温度 [°C]
2011/9/29 0:00	0.05	4150	25.9		31.8	101	2200	24
2011/9/29 2:00	0.05	4150	25.8		31.9	101	2200	24
2011/9/29 4:00	0.05	4150	25.8		31.8	101	2200	24
2011/9/29 6:00	0.04	4000	25.7		31.8	101	2200	24
2011/9/29 8:00	0.04	4000	25.7		31.8	101	2200	24
2011/9/29 10:00	0.04	4000	25.6		31.8	101	2200	24
2011/9/29 12:00	0.04	4000	25.6		31.7	101	2200	24
2011/9/29 14:00	0.04	4000	25.7		31.8	101	2200	24
2011/9/29 16:00	0.04	4000	25.8		31.8	101	2200	24
2011/9/29 18:00	0.04	4000	26.0		31.8	101	2200	24
2011/9/29 20:00	0.04	4000	26.1		31.8	101	2200	24
2011/9/29 22:00	0.04	4000	26.1		31.8	100	2200	24
2011/9/30 0:00	0.04	4000	26.1		31.8	100	2200	24
2011/9/30 2:00	0.04	4000	26.1		31.8	100	2200	24
2011/9/30 4:00	0.04	4000	26.1		31.8	100	2200	24
2011/9/30 6:00	0.04	4000	26.1		31.8	100	2200	24
2011/9/30 8:00	0.04	4000	26.0		31.8	100	2200	24
2011/9/30 10:00	0.05	4000	25.9		31.8	100	2200	24
2011/9/30 12:00	0.05	4000	25.9		31.8	100	2200	24
2011/9/30 14:00	0.05	4000	25.9		31.8	99	2200	24
2011/9/30 16:00	0.05	4000	25.9		31.8	99	2200	24
2011/9/30 18:00	0.05	4050	25.8		31.6	100	2200	24
2011/9/30 20:00	0.05	4050	25.8		31.7	100	2200	24
2011/9/30 22:00	0.05	4050	25.8		31.7	100	2200	24
2011/10/1 0:00	0.05	4050	25.8		31.8	100	2200	24
2011/10/1 2:00	0.05	4050	25.8		31.6	100	2200	24
2011/10/1 4:00	0.05	4050	25.8		31.7	100	2200	24
2011/10/1 6:00	0.05	4050	25.7		31.6	100	2200	24
2011/10/1 8:00	0.05	4050	25.7		31.4	100	2200	24
2011/10/1 10:00	0.05	4050	25.7		31.6	100	2200	24
<b>2011/10/1 12:00</b>	<b>0.05</b>	<b>4050</b>	<b>25.7</b>		<b>31.6</b>	<b>100</b>	<b>2200</b>	<b>24</b>
2011/10/1 14:00								
2011/10/1 16:00								
2011/10/1 18:00								
2011/10/1 20:00								
2011/10/1 22:00								
2011/10/2 0:00								

D/W圧力について  
・パーソナルエアロックドア開放中であるため、9/6 10:00 より記載せず