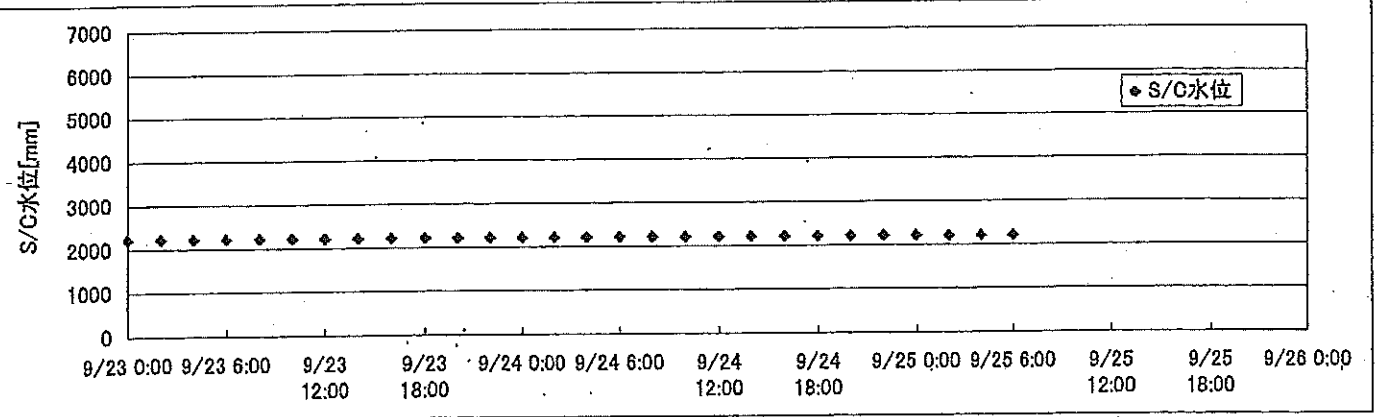
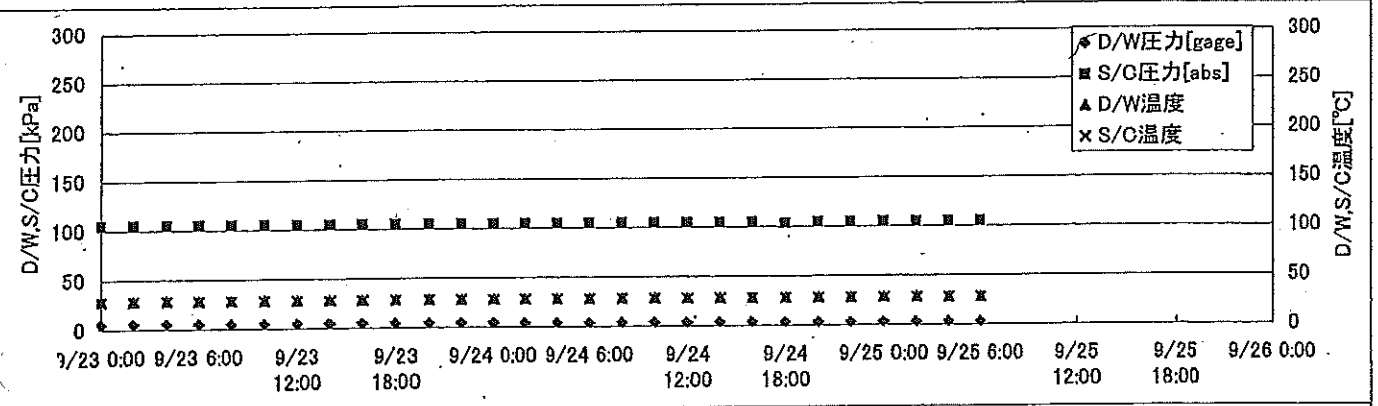
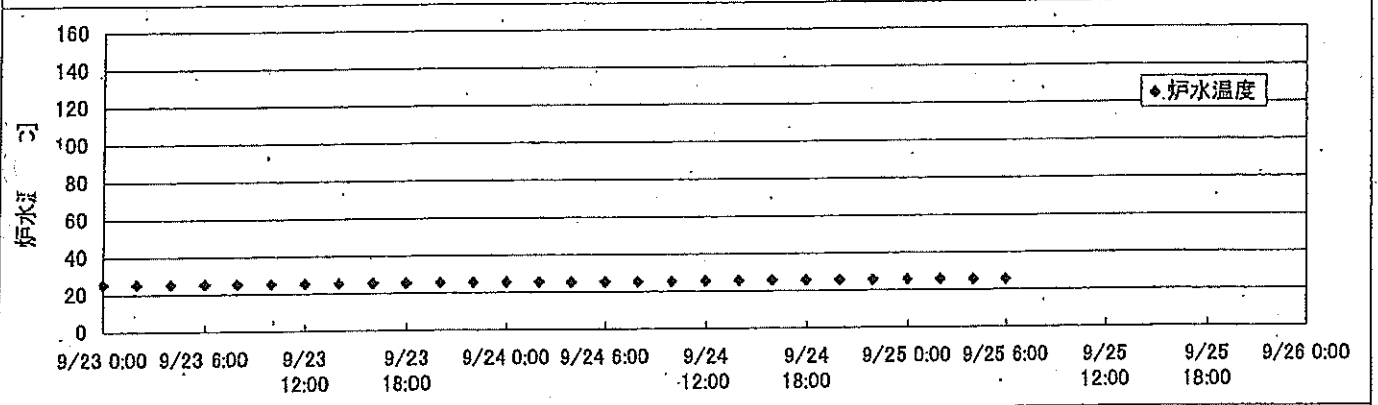
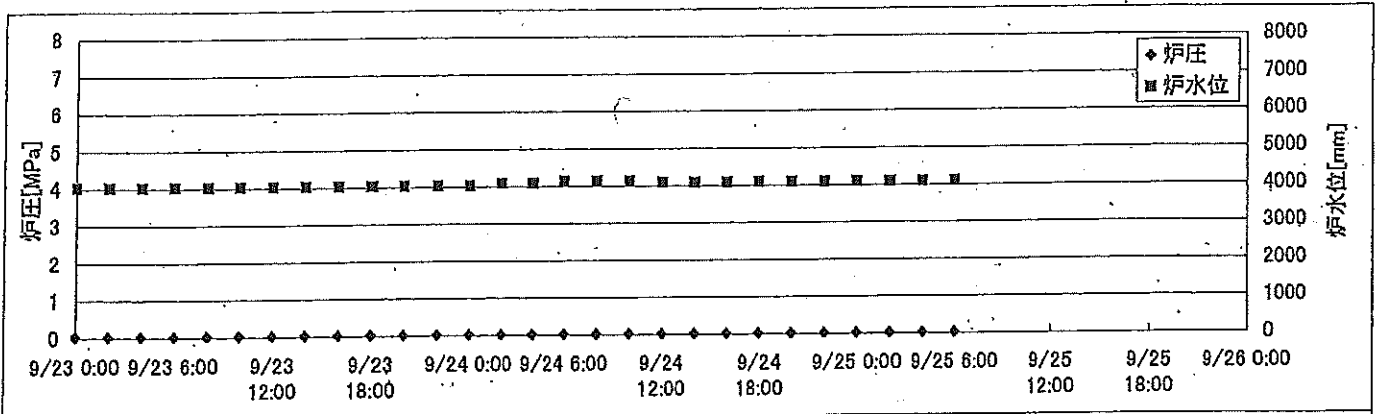
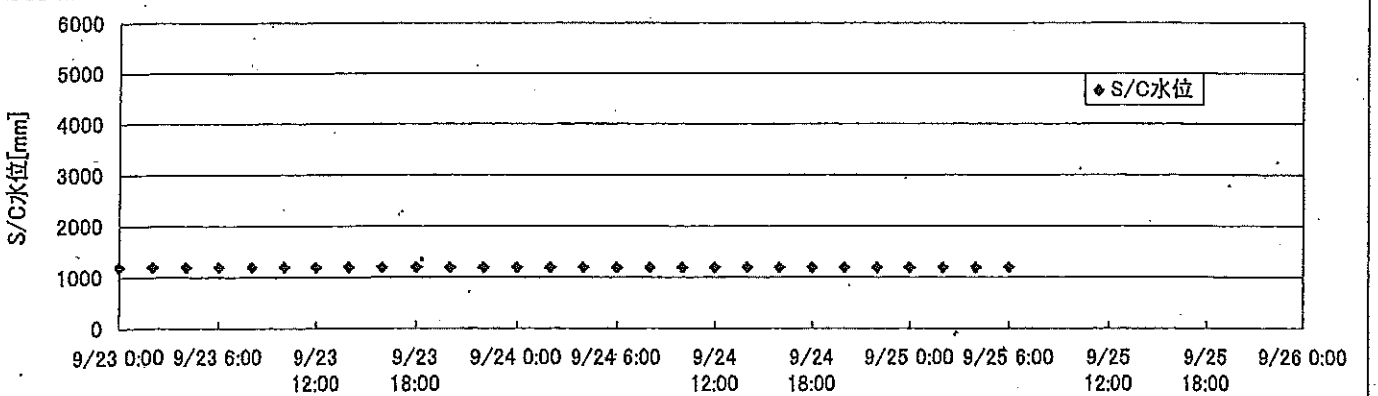
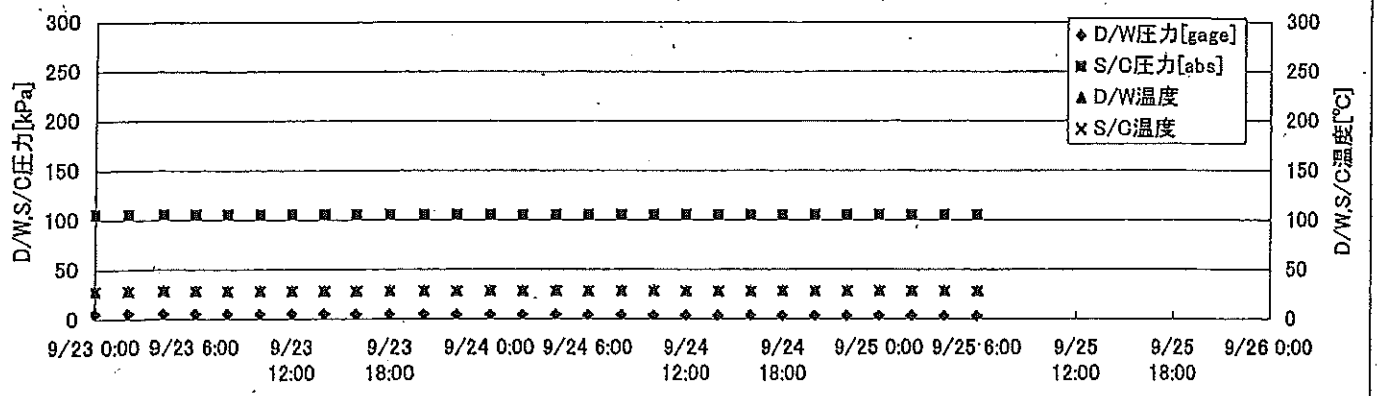
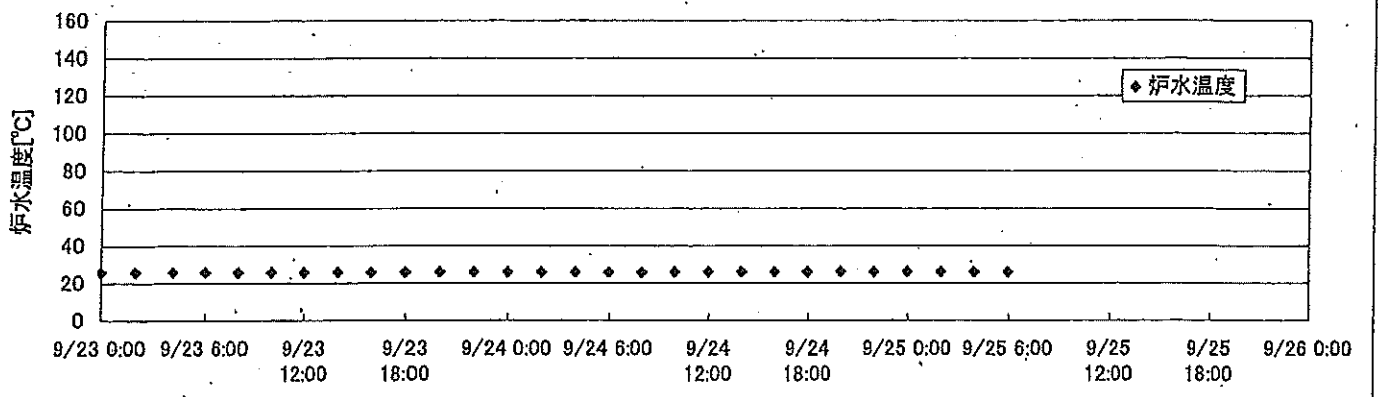
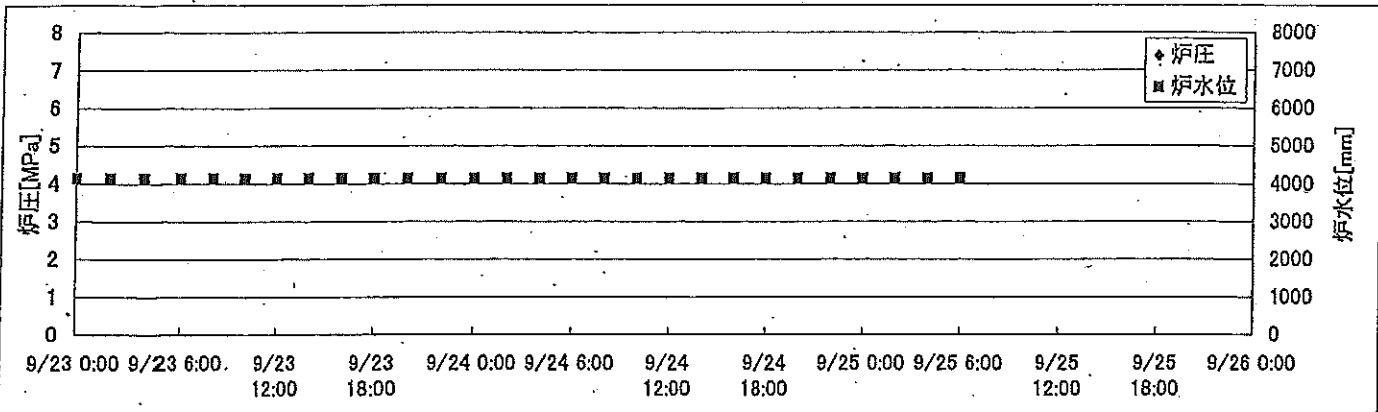


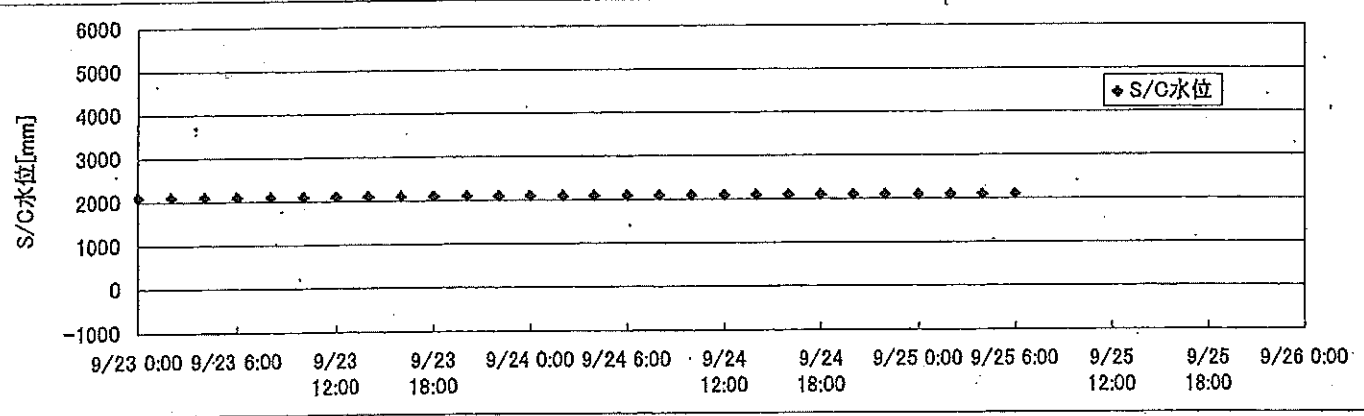
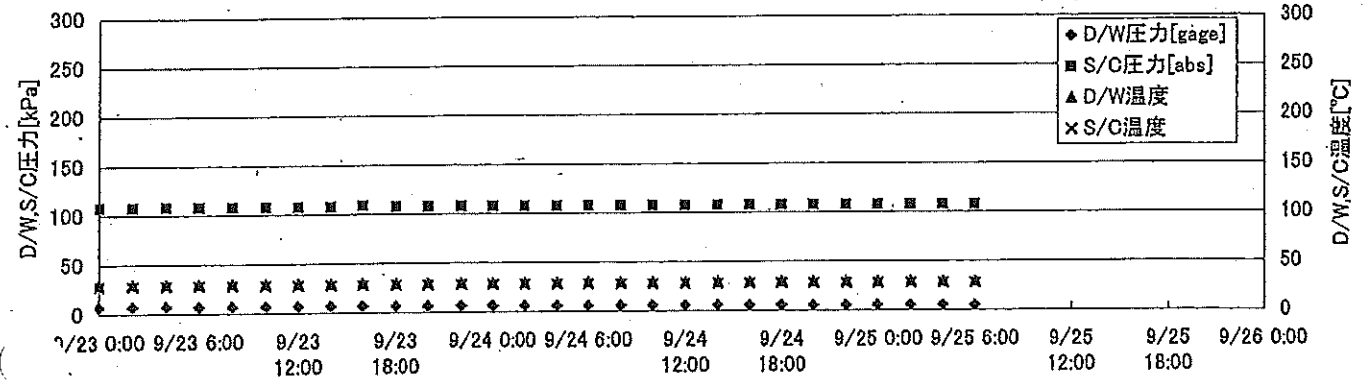
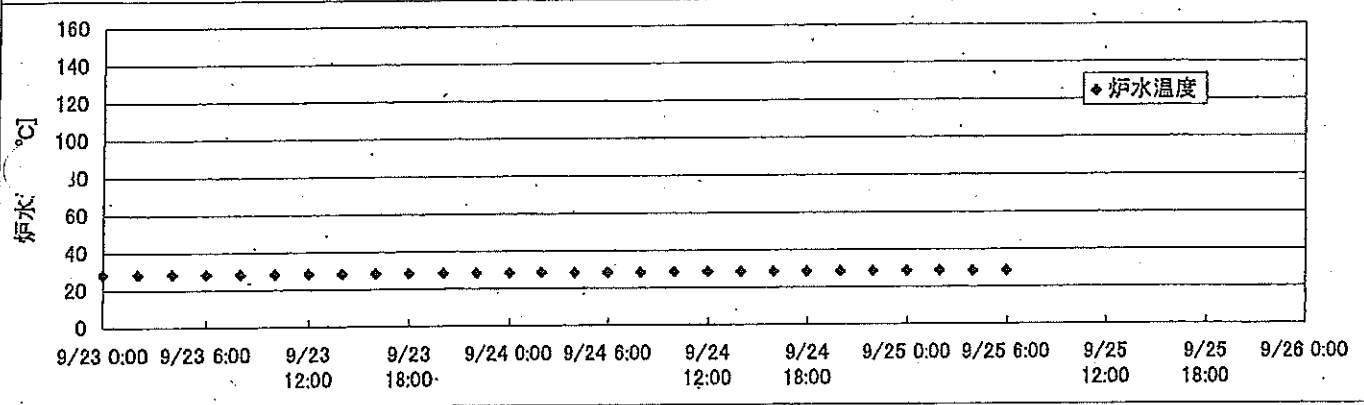
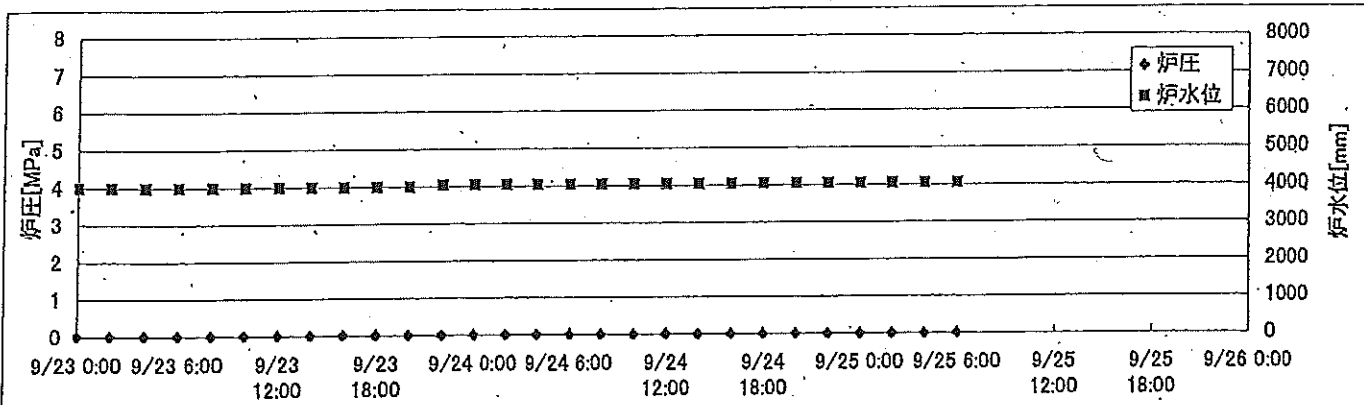
# 2F-1号機



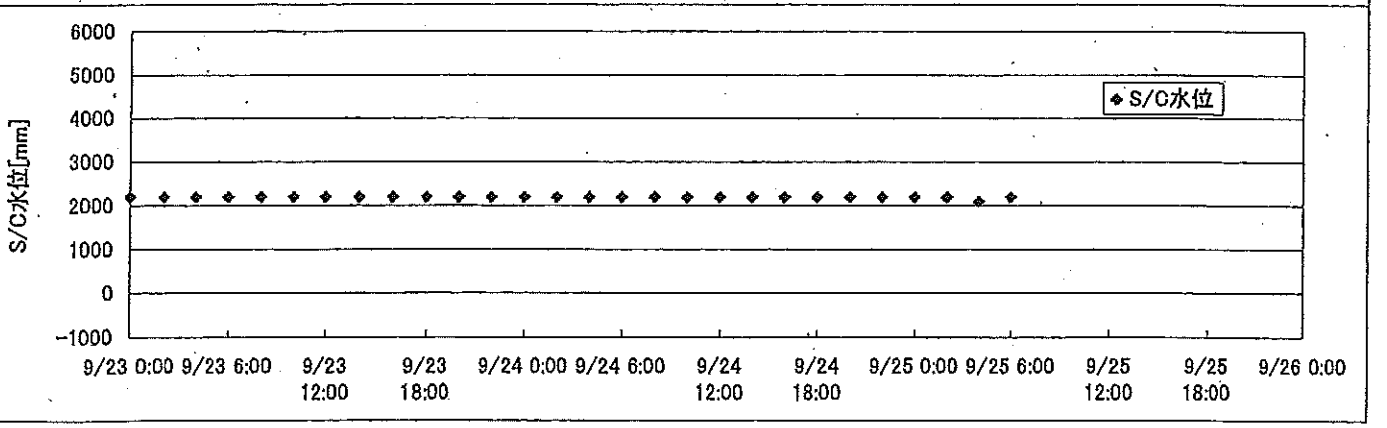
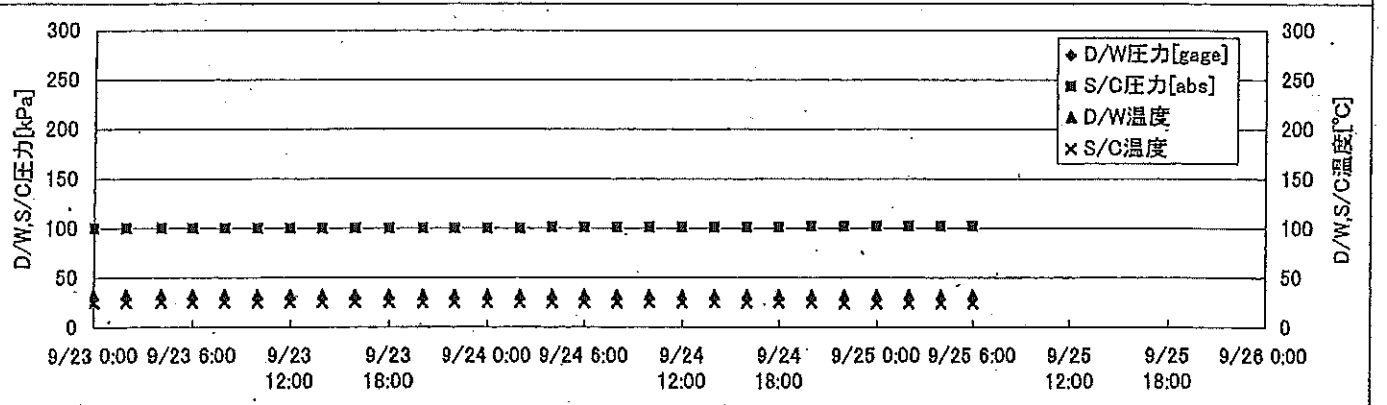
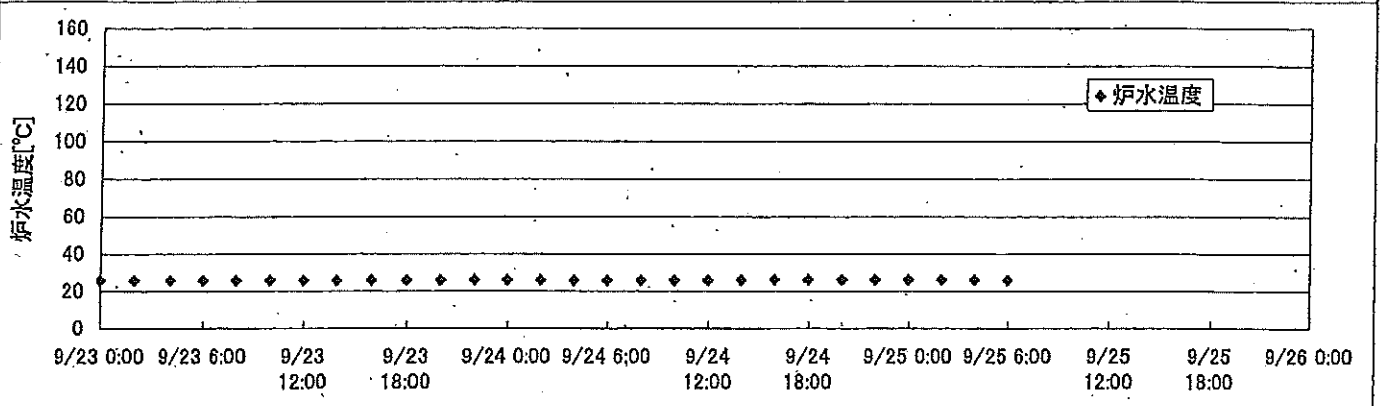
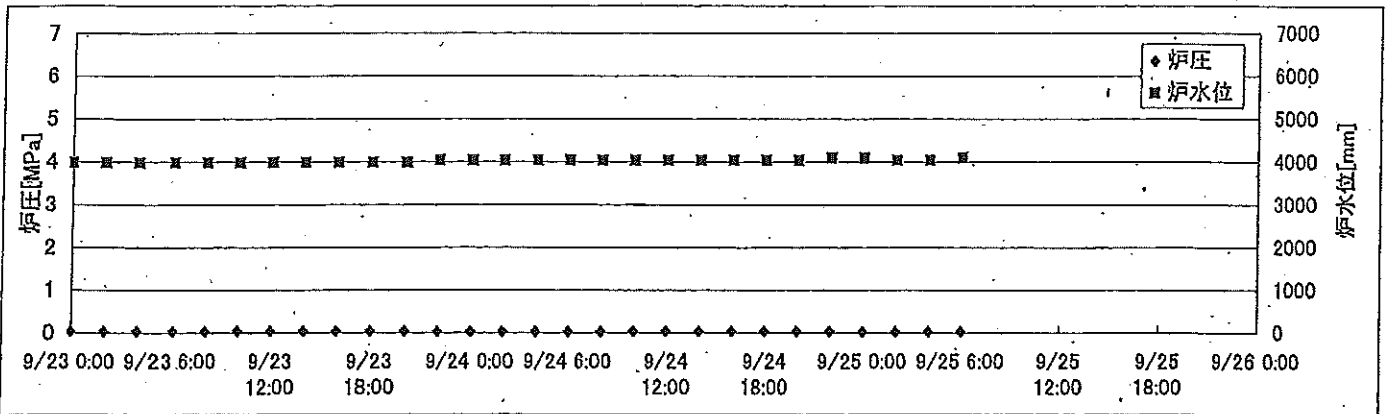
# 2F-2号機



2F-3号機



## 2F-4号機









## 2F-4号機

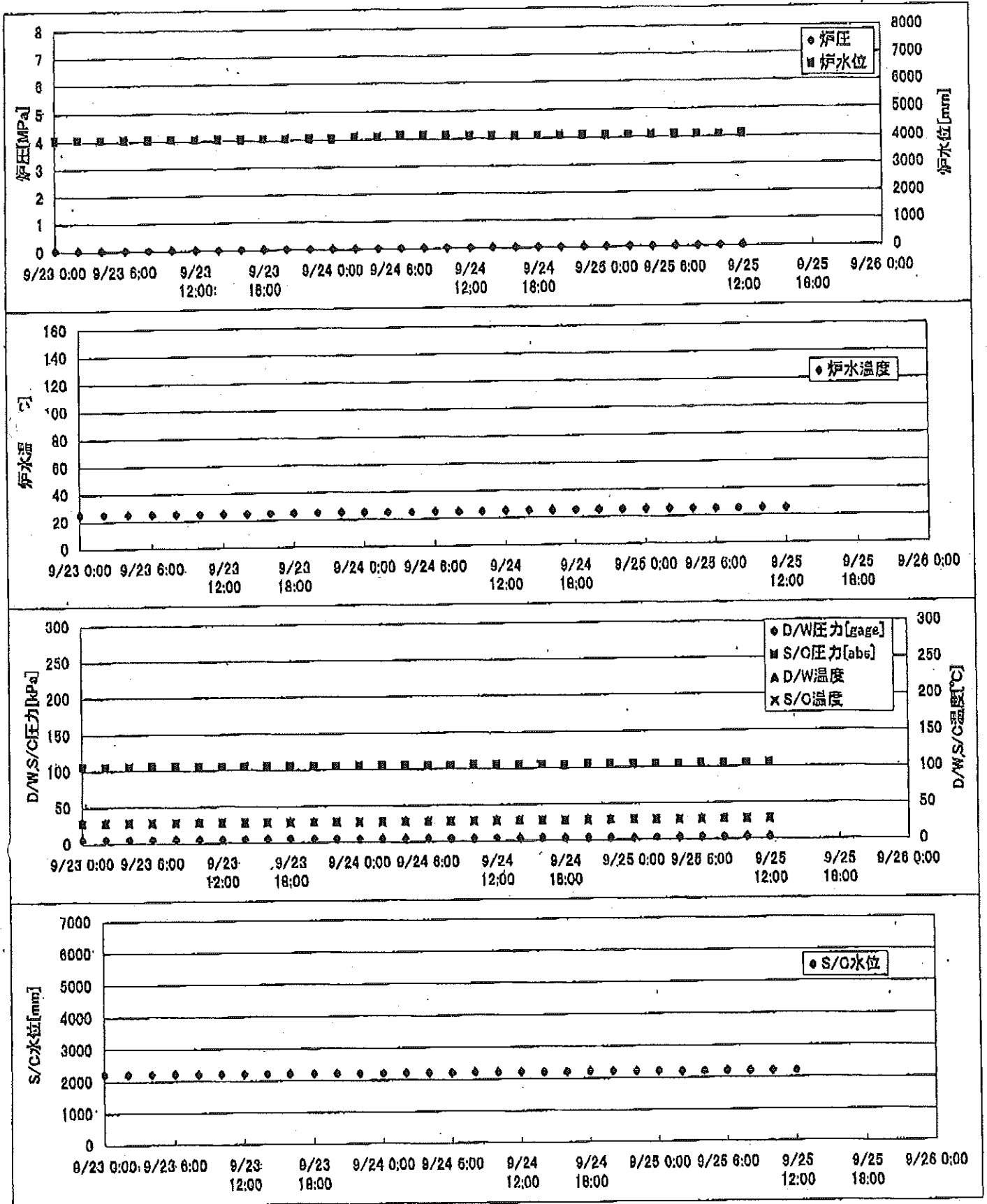
※燃料頂部(TAF)からの水位=炉水位+4200[mm]

時間	炉圧 [MPa (gage)]	炉水位 [mm] 停止時	炉水温度[°C]	D/W圧力 [kPa(gage)]	D/W温度 [°C]	S/C圧力 [kPa(abs)]	S/C水位 [mm]	S/C温度 [°C]
2011/9/23 0:00	0.04	4000	25.6		32.5	100	2200	25
2011/9/23 2:00	0.04	4000	25.6		32.6	100	2200	25
2011/9/23 4:00	0.04	4000	25.6		32.6	100	2200	25
2011/9/23 6:00	0.04	4000	25.6		32.6	100	2200	25
2011/9/23 8:00	0.04	4000	25.6		32.6	100	2200	25
2011/9/23 10:00	0.05	4000	25.6		32.5	100	2200	25
2011/9/23 12:00	0.05	4000	25.7		32.5	100	2200	25
2011/9/23 14:00	0.05	4000	25.7		32.5	100	2200	25
2011/9/23 16:00	0.05	4000	25.8		32.4	100	2200	25
2011/9/23 18:00	0.05	4000	25.9		32.5	100	2200	25
2011/9/23 20:00	0.05	4000	25.9		32.3	100	2200	25
2011/9/23 22:00	0.04	4050	26.0		32.3	100	2200	25
2011/9/24 0:00	0.04	4050	26.0		32.3	100	2200	25
2011/9/24 2:00	0.04	4050	26.0		32.5	100	2200	25
2011/9/24 4:00	0.04	4050	25.9		32.5	101	2200	25
2011/9/24 6:00	0.04	4050	25.9		32.5	101	2200	25
2011/9/24 8:00	0.04	4050	25.8		32.5	101	2200	25
2011/9/24 10:00	0.05	4050	25.8		32.4	101	2200	25
2011/9/24 12:00	0.05	4050	25.9		32.5	101	2200	25
2011/9/24 14:00	0.05	4050	26.0		32.4	101	2200	25
2011/9/24 16:00	0.05	4050	26.1		32.4	101	2200	25
2011/9/24 18:00	0.05	4050	26.2		32.2	101	2200	25
2011/9/24 20:00	0.05	4050	26.2		32.2	102	2200	25
2011/9/24 22:00	0.05	4100	26.2		32.3	102	2200	24
2011/9/25 0:00	0.04	4100	26.2		32.4	102	2200	24
2011/9/25 2:00	0.04	4050	26.1		32.5	102	2200	24
2011/9/25 4:00	0.04	4050	26.0		32.3	102	2100	24
2011/9/25 6:00	0.04	4100	25.9		32.3	102	2200	24
2011/9/25 8:00								
2011/9/25 10:00								
2011/9/25 12:00								
2011/9/25 14:00								
2011/9/25 16:00								
2011/9/25 18:00								
2011/9/25 20:00								
2011/9/25 22:00								
2011/9/26 0:00								

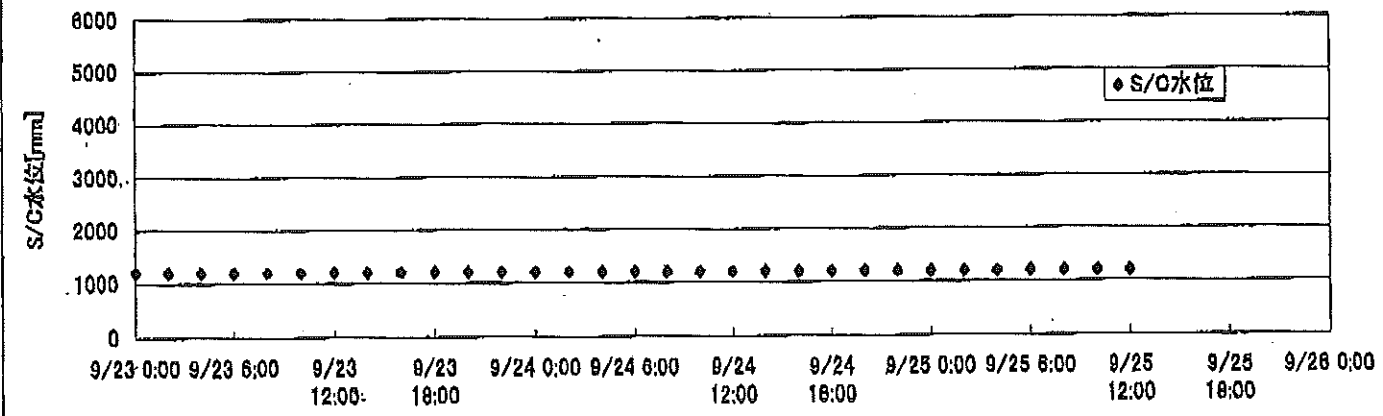
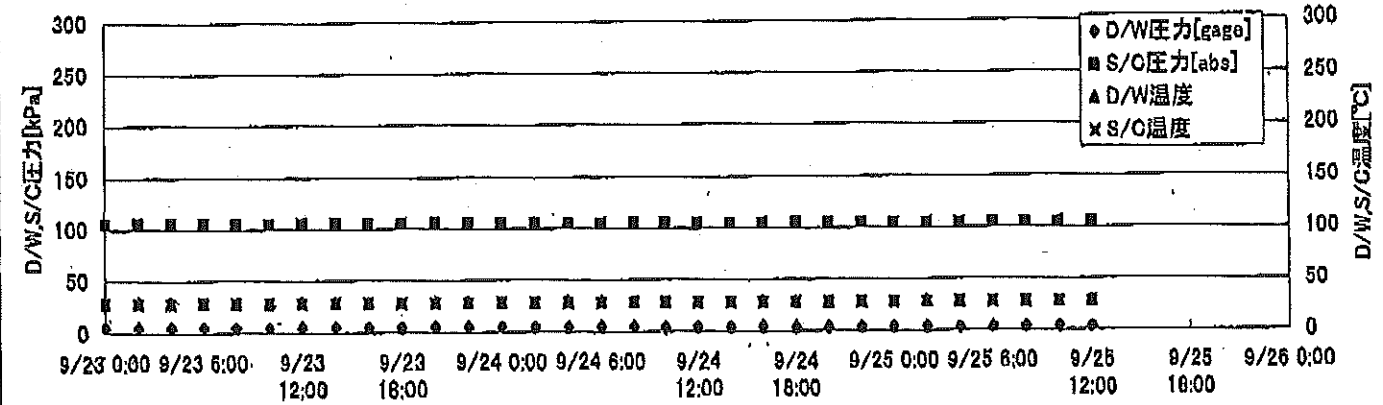
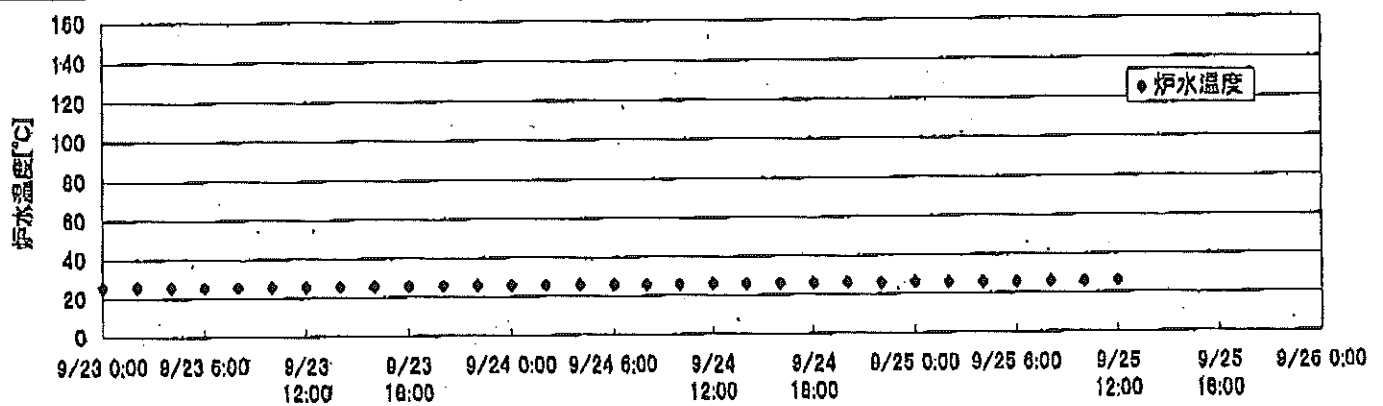
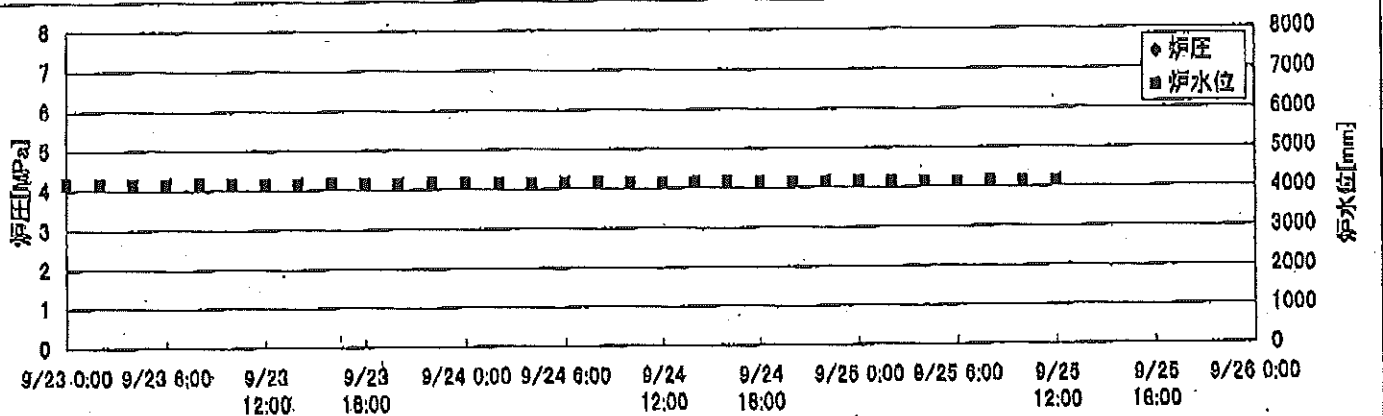
D/W圧力について  
 ・パーソナルエアロックドア開放中であるため、9/6 10:00 より記載せず



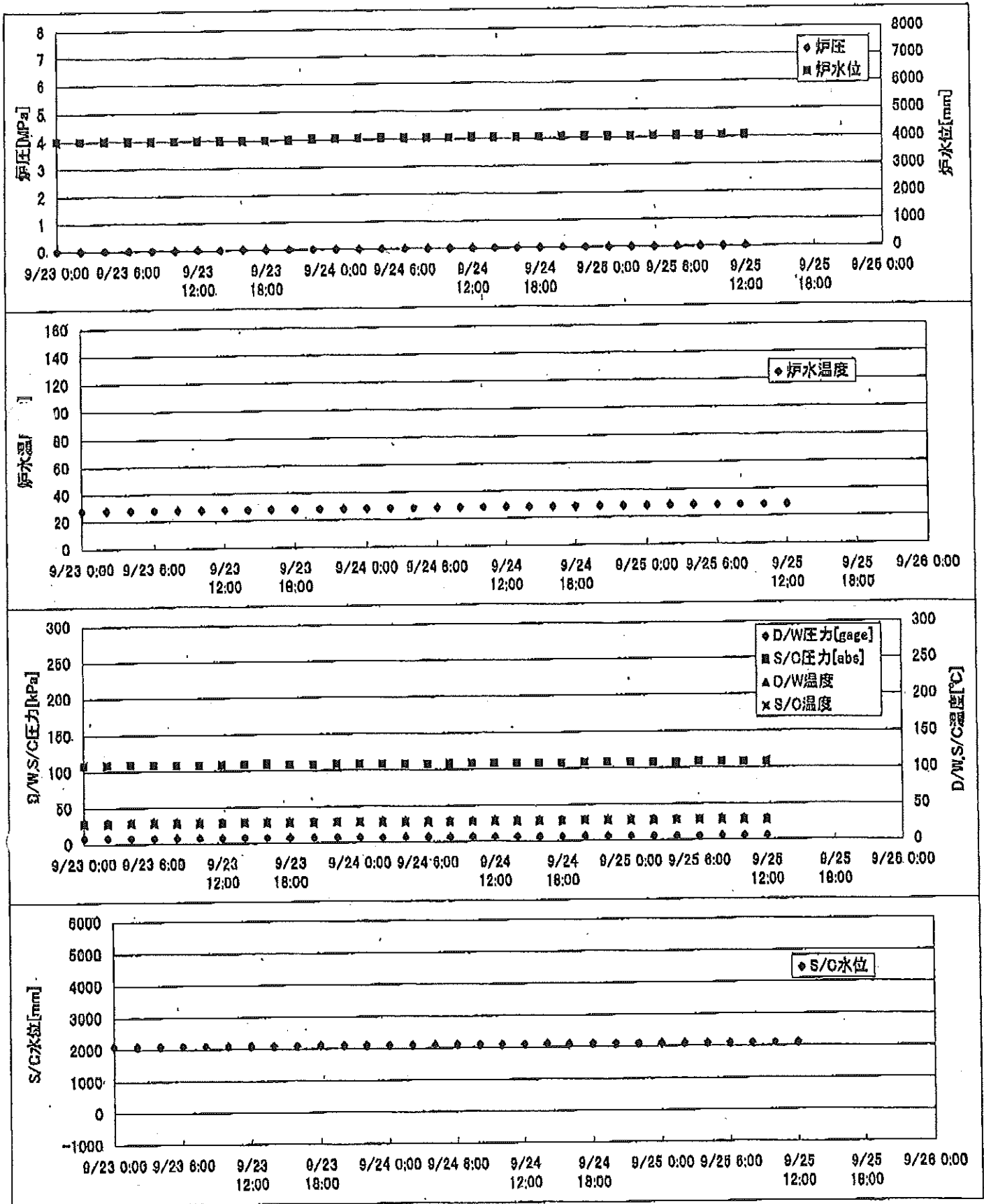
# 2F-1号機



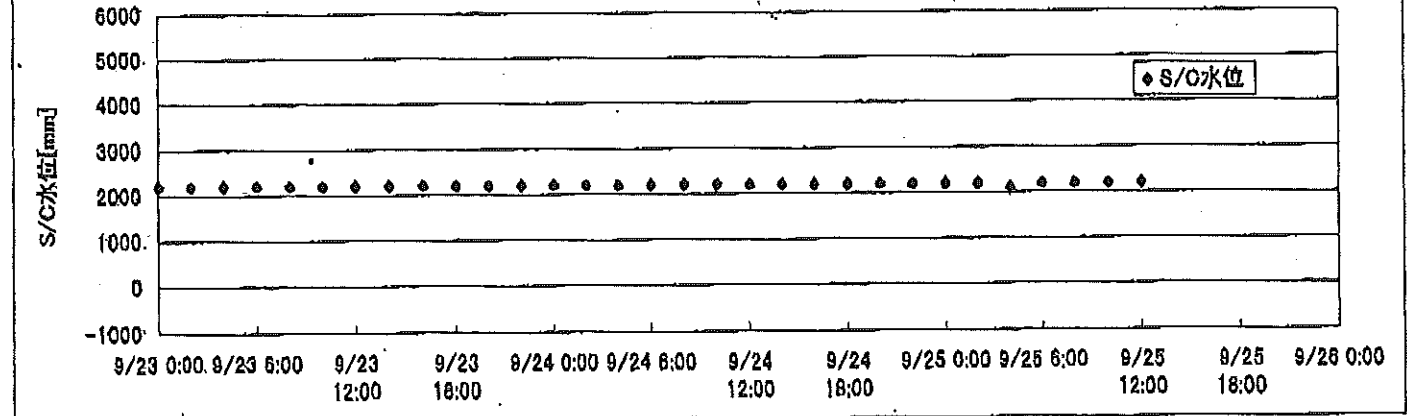
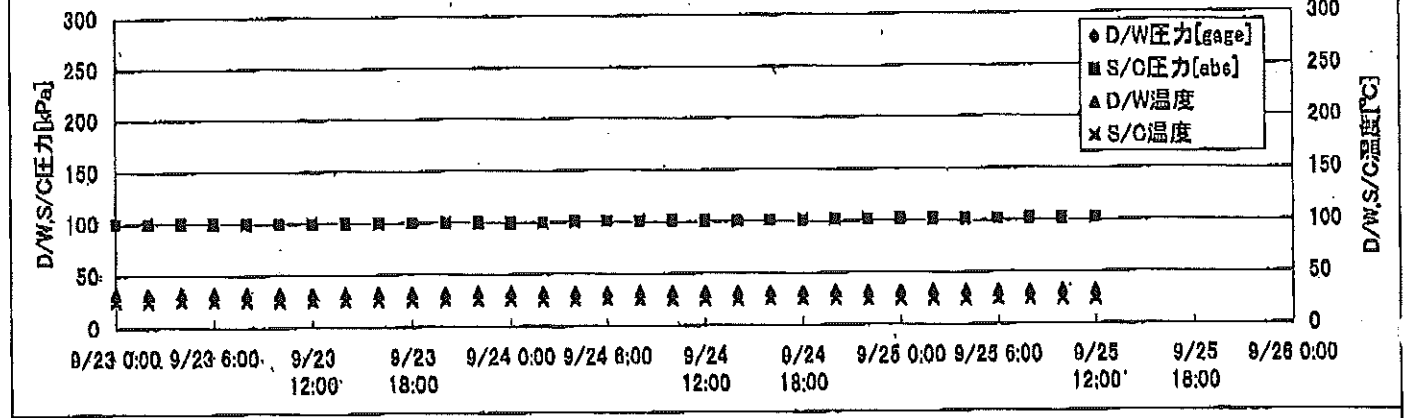
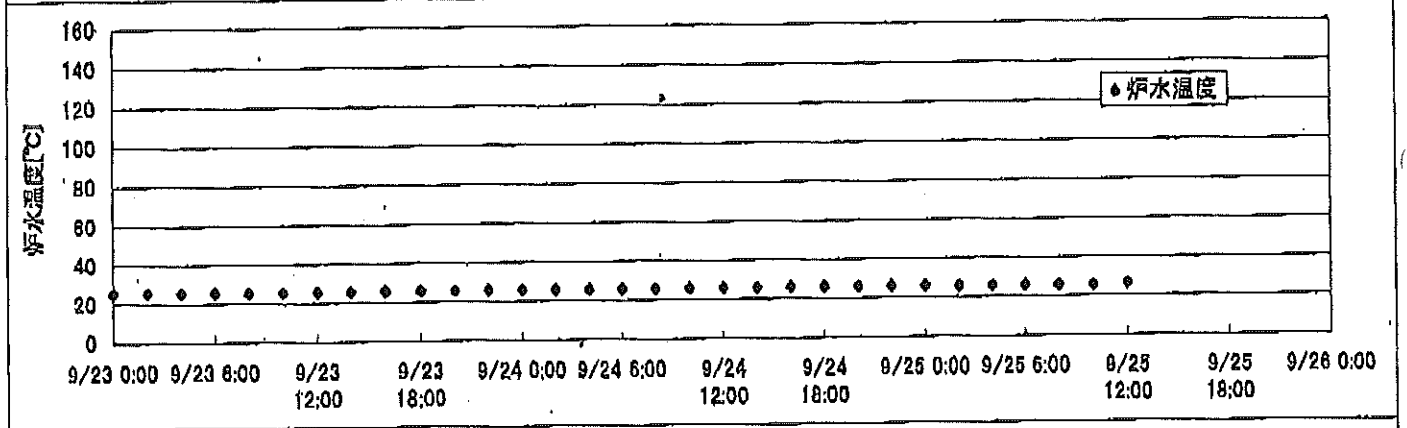
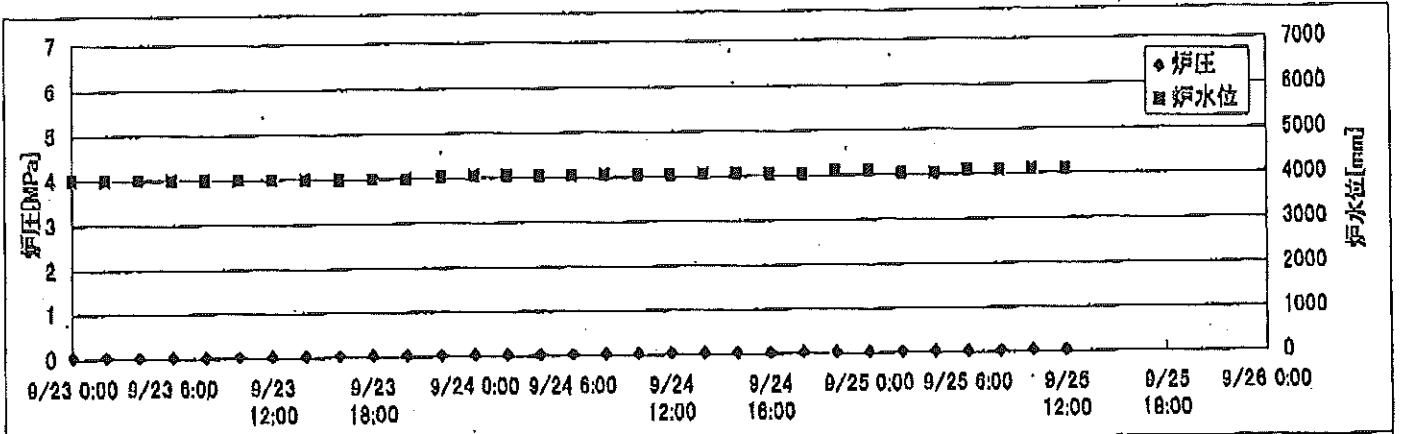
2F-2号機



2F-3号機



# 2F-4号機



# 2F-1号機

※燃料頂部(TAF)からの水位=炉水位+4200[mm]

時間	炉圧 [MPa (gage)]	炉水位 [mm] 停止時	炉水温度[°C]	D/W圧力 [kPa(gage)]	D/W温度 [°C]	S/G圧力 [kPa(abs)]	S/G水位 [mm]	S/G温度 [°C]
2011/9/23 0:00	0.04	4050	25.2	6	28.9	105	2215	28
2011/9/23 2:00	0.04	4050	25.2	6	28.8	105	2215	28
2011/9/23 4:00	0.04	4050	25.2	5	28.9	105	2215	28
2011/9/23 6:00	0.04	4050	25.1	5	28.7	105	2215	28
2011/9/23 8:00	0.04	4050	25.1	5	28.8	105	2215	28
2011/9/23 10:00	0.04	4050	25.1	5	28.8	105	2215	28
2011/9/23 12:00	0.04	4050	25.1	5	28.8	105	2215	28
2011/9/23 14:00	0.04	4050	25.2	5	28.8	105	2216	28
2011/9/23 16:00	0.04	4050	25.3	5	28.8	105	2215	28
2011/9/23 18:00	0.04	4050	25.4	5	28.8	105	2216	28
2011/9/23 20:00	0.04	4050	25.5	5	28.8	105	2215	28
2011/9/23 22:00	0.04	4050	25.5	5	28.8	105	2215	28
2011/9/24 0:00	0.04	4050	25.5	5	28.7	105	2214	28
2011/9/24 2:00	0.04	4100	25.5	5	28.8	105	2214	28
2011/9/24 4:00	0.04	4100	25.4	5	28.8	105	2214	28
2011/9/24 6:00	0.04	4150	25.4	4	28.8	105	2214	28
2011/9/24 8:00	0.04	4150	25.4	4	28.8	105	2214	28
2011/9/24 10:00	0.04	4150	25.4	4	28.8	105	2214	28
2011/9/24 12:00	0.04	4100	25.5	4	28.8	105	2214	28
2011/9/24 14:00	0.04	4100	25.6	4	28.8	105	2214	28
2011/9/24 16:00	0.04	4100	25.6	4	28.8	105	2215	28
2011/9/24 18:00	0.04	4100	25.7	4	28.8	104	2215	28
2011/9/24 20:00	0.04	4100	25.7	4	28.8	105	2214	28
2011/9/24 22:00	0.04	4100	25.7	4	28.6	105	2214	28
2011/9/25 0:00	0.04	4100	25.7	4	28.7	105	2214	28
2011/9/25 2:00	0.04	4100	25.6	4	28.7	105	2213	28
2011/9/25 4:00	0.04	4100	25.5	4	28.8	105	2212	28
2011/9/25 6:00	0.04	4100	25.5	4	28.7	105	2213	28
2011/9/25 8:00	0.04	4100	25.4	4	28.8	105	2213	28
2011/9/25 10:00	0.04	4100	25.4	4	28.8	105	2213	28
<b>2011/9/25 12:00</b>	<b>0.04</b>	<b>4100</b>	<b>25.4</b>	<b>4</b>	<b>28.8</b>	<b>105</b>	<b>2213</b>	<b>28</b>
2011/9/25 14:00								
2011/9/25 16:00								
2011/9/25 18:00								
2011/9/25 20:00								
2011/9/25 22:00								
2011/9/26 0:00								

# 2F-2号機

※燃料頂部(TAF)からの水位=炉水位+4200[mm]

時間	炉圧 [MPa (gage)]	炉水位 [mm] 停止時	炉水温度[°C]	D/W圧力 [kPa(gage)]	D/W温度 [°C]	S/C圧力 [kPa(abs)]	S/C水位 [mm]	S/C温度 [°C]
2011/9/23 0:00	-0.01	4150	25.8	6	28.7	105	1200	28
2011/9/23 2:00	-0.01	4150	25.8	5	28.9	105	1200	28
2011/9/23 4:00	-0.01	4150	25.8	5	28.9	105	1200	28
2011/9/23 6:00	-0.01	4150	25.8	5	28.7	105	1200	28
2011/9/23 8:00	-0.01	4150	25.8	5	28.7	105	1200	28
2011/9/23 10:00	-0.01	4150	25.8	5	28.7	105	1200	28
2011/9/23 12:00	-0.01	4150	25.8	5	28.7	105	1200	28
2011/9/23 14:00	-0.01	4150	25.8	5	28.7	105	1200	28
2011/9/23 16:00	-0.01	4150	25.8	5	28.7	105	1200	28
2011/9/23 18:00	-0.01	4150	25.9	5	28.7	105	1200	28
2011/9/23 20:00	-0.01	4150	26.0	5	28.7	105	1200	28
2011/9/23 22:00	-0.01	4150	26.0	5	28.7	105	1200	28
2011/9/24 0:00	-0.01	4150	26.0	5	28.7	105	1200	28
2011/9/24 2:00	-0.01	4150	26.0	5	28.7	105	1200	28
2011/9/24 4:00	-0.01	4150	26.0	5	28.9	105	1200	28
2011/9/24 6:00	-0.01	4150	26.0	4	28.7	105	1200	28
2011/9/24 8:00	-0.01	4150	25.9	4	28.9	105	1200	28
2011/9/24 10:00	-0.01	4150	26.0	4	28.9	105	1200	28
2011/9/24 12:00	-0.01	4150	26.1	4	28.7	105	1200	28
2011/9/24 14:00	-0.01	4150	26.1	4	28.7	105	1200	28
2011/9/24 16:00	-0.01	4150	26.2	4	28.7	105	1200	28
2011/9/24 18:00	-0.01	4150	26.2	4	28.6	105	1200	28
2011/9/24 20:00	-0.01	4150	26.3	4	28.7	105	1200	28
2011/9/24 22:00	-0.01	4150	26.2	4	28.7	105	1200	28
2011/9/25 0:00	-0.01	4150	26.3	4	28.7	105	1200	28
2011/9/25 2:00	-0.01	4150	26.2	4	28.7	105	1200	28
2011/9/25 4:00	-0.01	4150	26.1	4	28.7	105	1200	28
2011/9/25 6:00	-0.01	4150	26.1	3	28.7	105	1200	28
2011/9/25 8:00	-0.01	4150	26.0	3	28.7	105	1200	28
2011/9/25 10:00	-0.01	4150	26.0	3	28.5	105	1200	28
2011/9/25 12:00	-0.01	4150	26.3	4	28.9	105	1200	28
2011/9/25 14:00								
2011/9/25 16:00								
2011/9/25 18:00								
2011/9/25 20:00								
2011/9/25 22:00								
2011/9/26 0:00								

RHRポンプ切替  
 -9/25 10:57 RHR(B)ポンプ停止  
 -9/25 11:11 RHR(A)ポンプ起動

NO. 010J  
 2011年9月25日  
 2F-2号機  
 2011年9月25日

# 2F-3号機

※燃料頂部(TAF)からの水位=炉水位+4200[mm]

時間	炉圧 [MPa (gage)]	炉水位 [mm] 停止時	炉水温度[°C]	D/W圧力 [kPa(gage)]	D/W温度 [°C]	S/G圧力 [kPa(abs)]	S/G水位 [mm]	S/C温度 [°C]
2011/9/23 0:00	0.01	4000	28.1	8	29.8	108	2100	28
2011/9/23 2:00	0.01	4000	28.1	8	29.8	108	2100	28
2011/9/23 4:00	0.02	4000	28.2	8	29.7	108	2100	28
2011/9/23 6:00	0.01	4000	28.1	7	29.7	108	2100	28
2011/9/23 8:00	0.01	4000	28.1	7	29.8	108	2100	28
2011/9/23 10:00	0.01	4000	28.1	7	29.7	108	2100	28
2011/9/23 12:00	0.01	4000	28.2	7	29.6	108	2100	28
2011/9/23 14:00	0.01	4000	28.1	7	29.7	108	2100	28
2011/9/23 16:00	0.02	4000	28.2	7	29.8	109	2100	28
2011/9/23 18:00	0.01	4000	28.2	7	29.6	108	2100	28
2011/9/23 20:00	0.01	4000	28.2	7	29.8	108	2100	28
2011/9/23 22:00	0.01	4050	28.3	7	29.7	108	2100	28
2011/9/24 0:00	0.01	4050	28.3	7	29.7	108	2100	28
2011/9/24 2:00	0.01	4050	28.4	7	29.7	108	2100	28
2011/9/24 4:00	0.01	4050	28.3	7	29.7	108	2100	28
2011/9/24 6:00	0.01	4050	28.3	7	29.8	108	2100	28
2011/9/24 8:00	0.01	4050	28.3	6	29.6	108	2100	28
2011/9/24 10:00	0.01	4050	28.4	6	29.6	108	2100	28
2011/9/24 12:00	0.01	4050	28.4	6	29.6	108	2100	28
2011/9/24 14:00	0.01	4050	28.4	6	29.7	108	2100	28
2011/9/24 16:00	0.01	4050	28.5	6	29.6	108	2100	28
2011/9/24 18:00	0.01	4050	28.5	6	29.6	108	2100	28
2011/9/24 20:00	0.01	4050	28.5	6	29.6	108	2100	28
2011/9/24 22:00	0.01	4050	28.5	6	29.7	108	2100	28
2011/9/25 0:00	0.01	4050	28.5	6	29.6	108	2100	28
2011/9/25 2:00	0.01	4050	28.6	6	29.6	108	2100	28
2011/9/25 4:00	0.01	4050	28.5	6	29.6	108	2100	28
2011/9/25 6:00	0.01	4050	28.4	6	29.6	108	2100	28
2011/9/25 8:00	0.01	4050	28.4	6	29.6	108	2100	28
2011/9/25 10:00	0.01	4050	28.3	6	29.6	108	2100	28
<b>2011/9/25 12:00</b>	<b>0.01</b>	<b>4050</b>	<b>28.3</b>	<b>6</b>	<b>29.6</b>	<b>108</b>	<b>2100</b>	<b>28</b>
2011/9/25 14:00								
2011/9/25 16:00								
2011/9/25 18:00								
2011/9/25 20:00								
2011/9/25 22:00								
2011/9/26 0:00								

