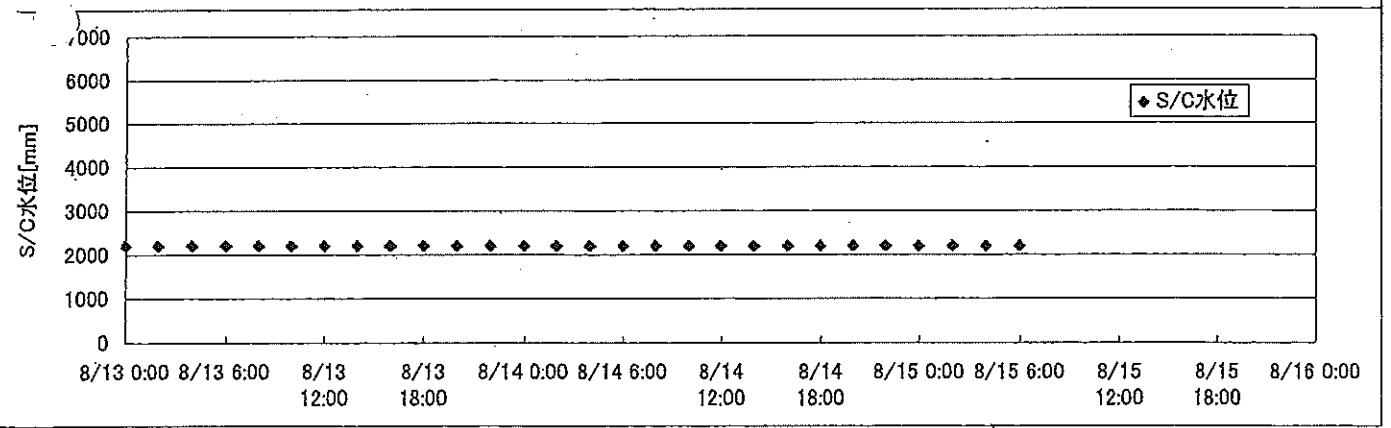
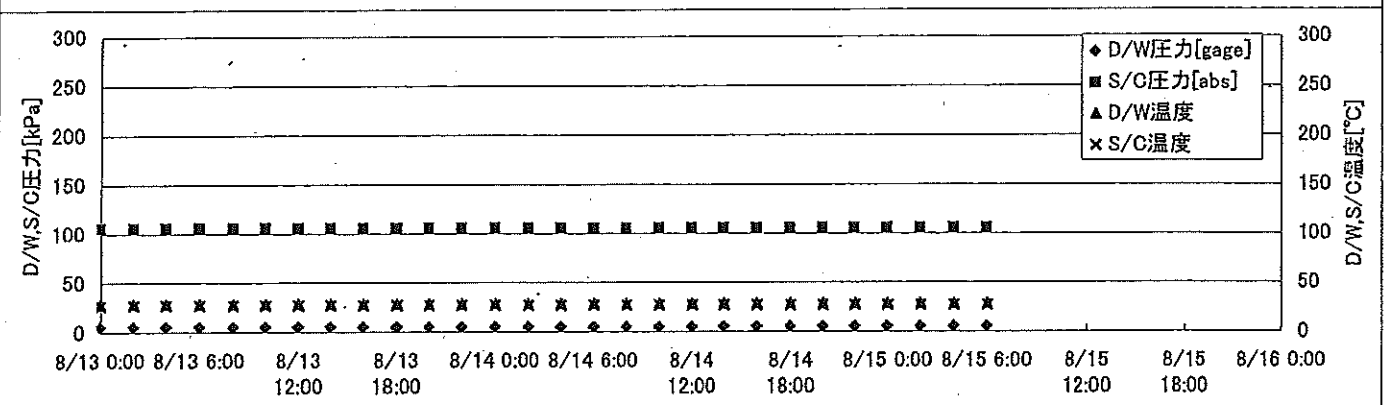
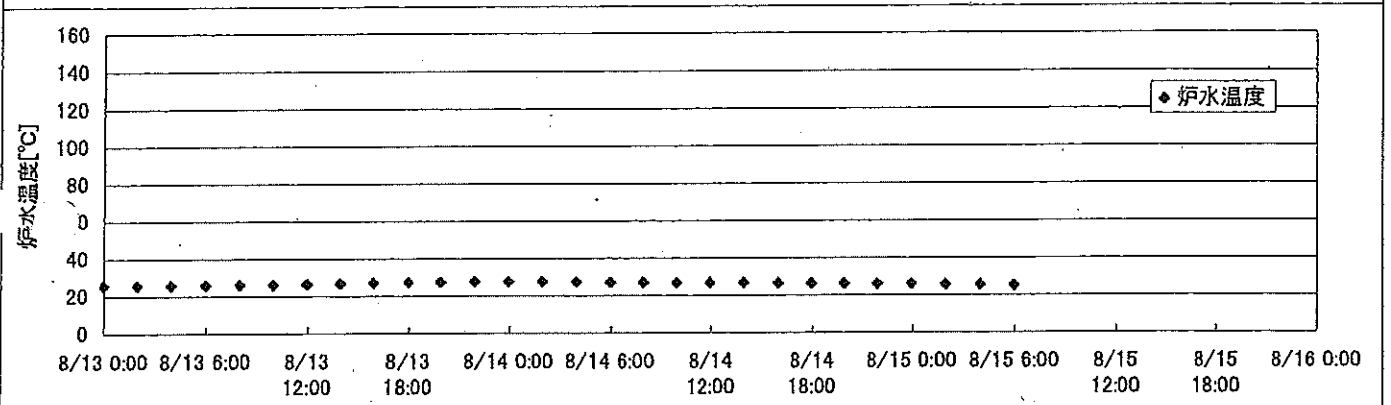
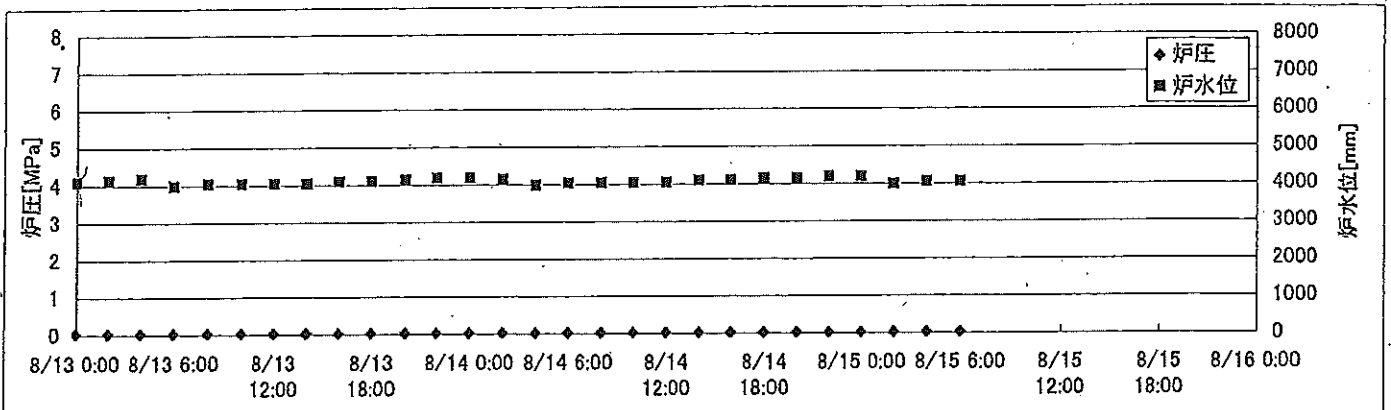
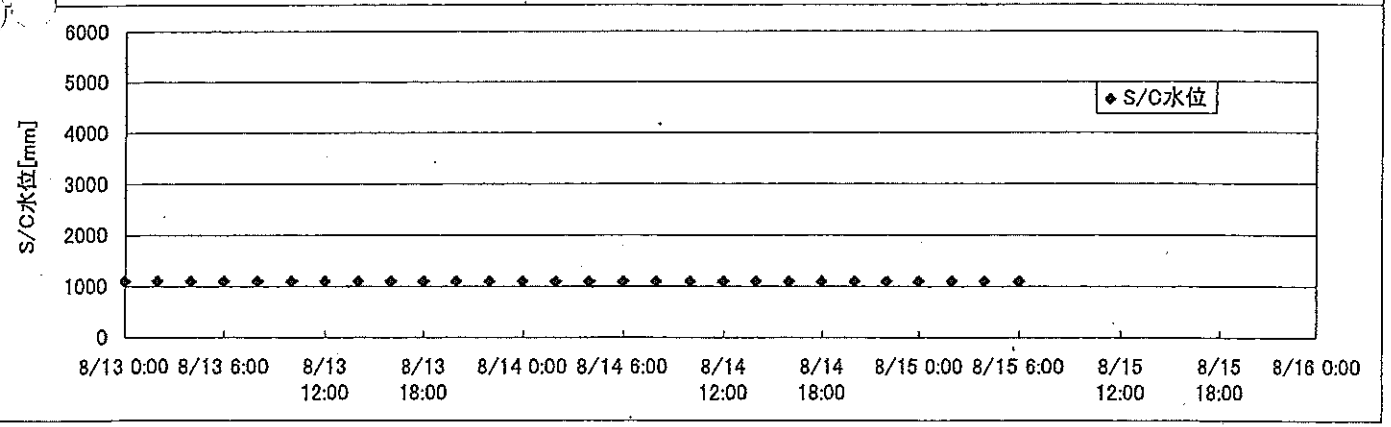
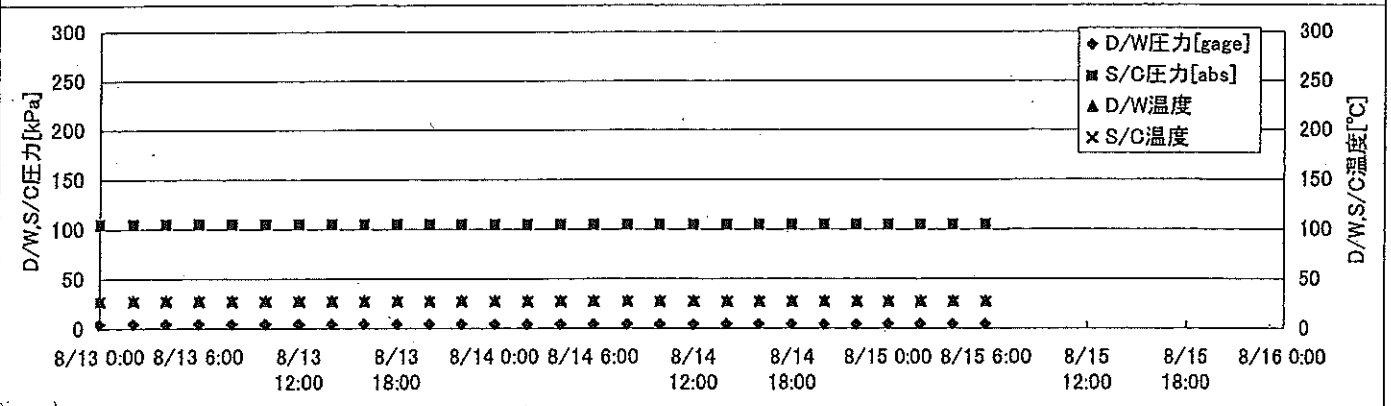
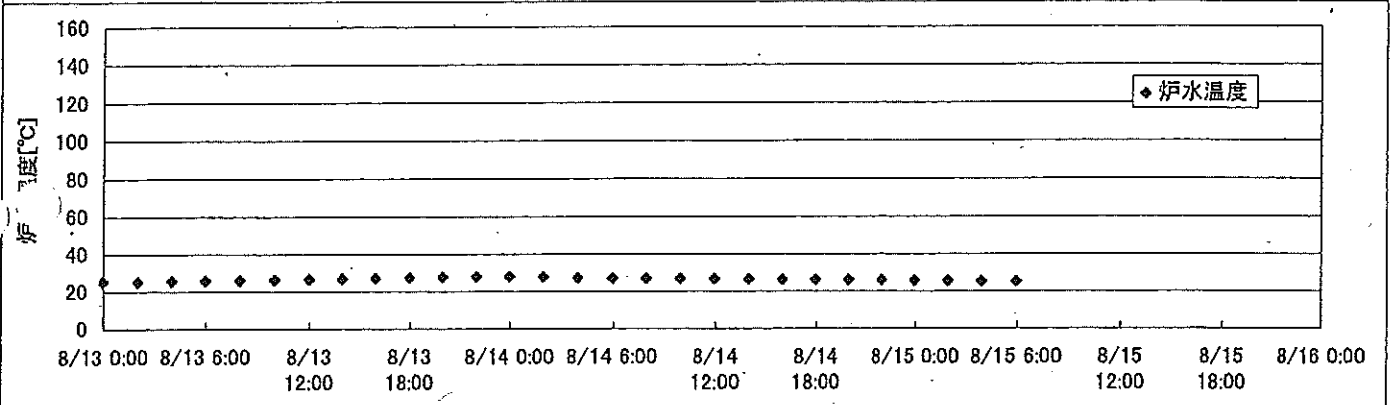
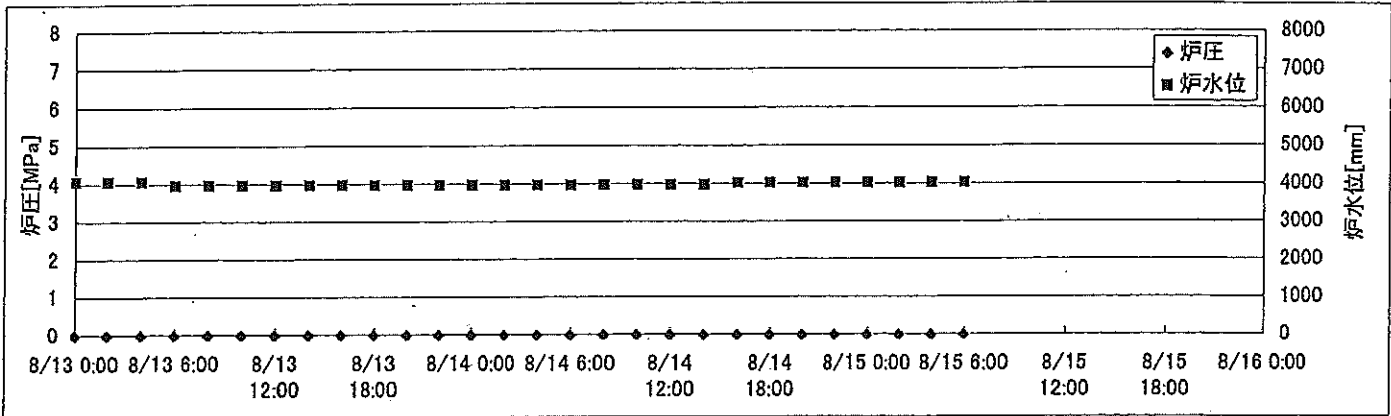


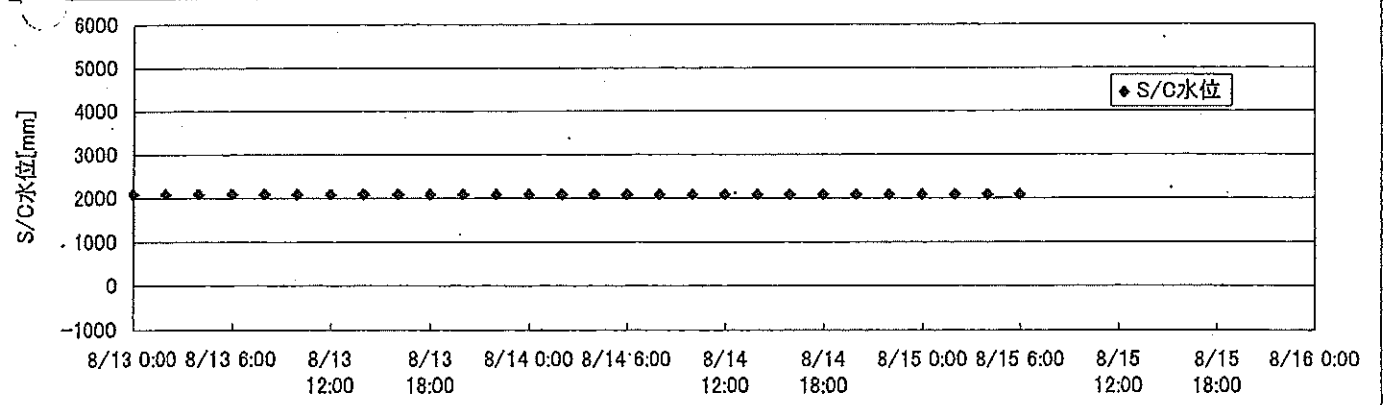
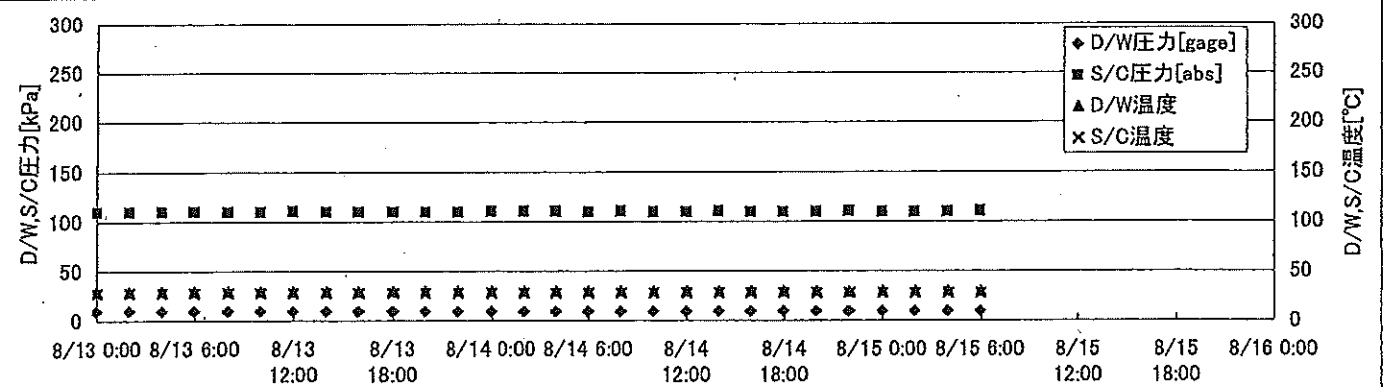
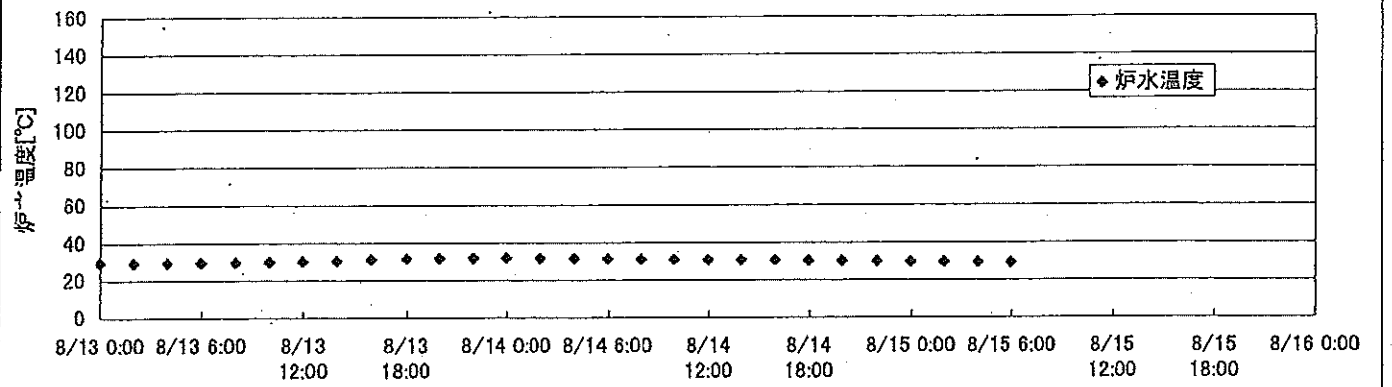
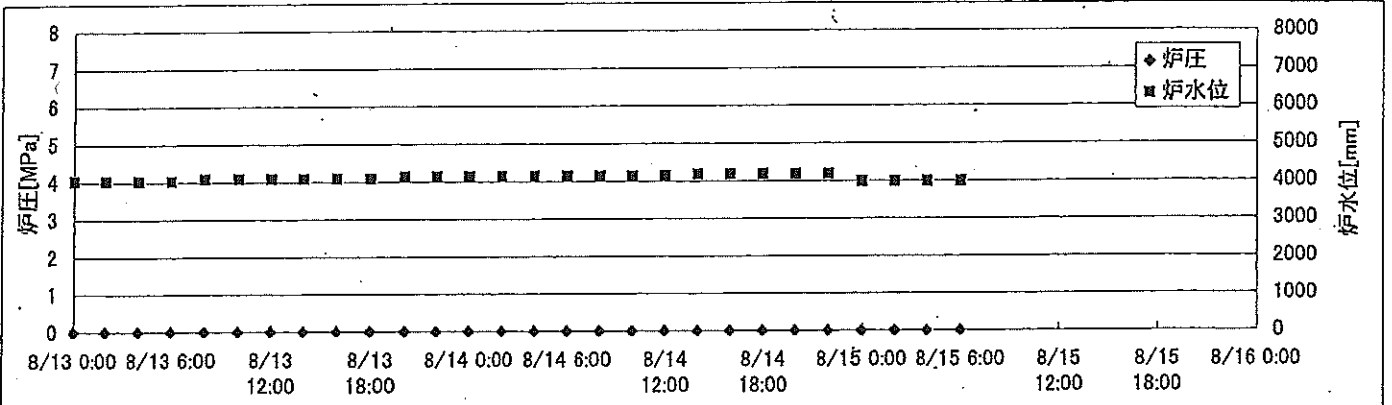
2F-1号機



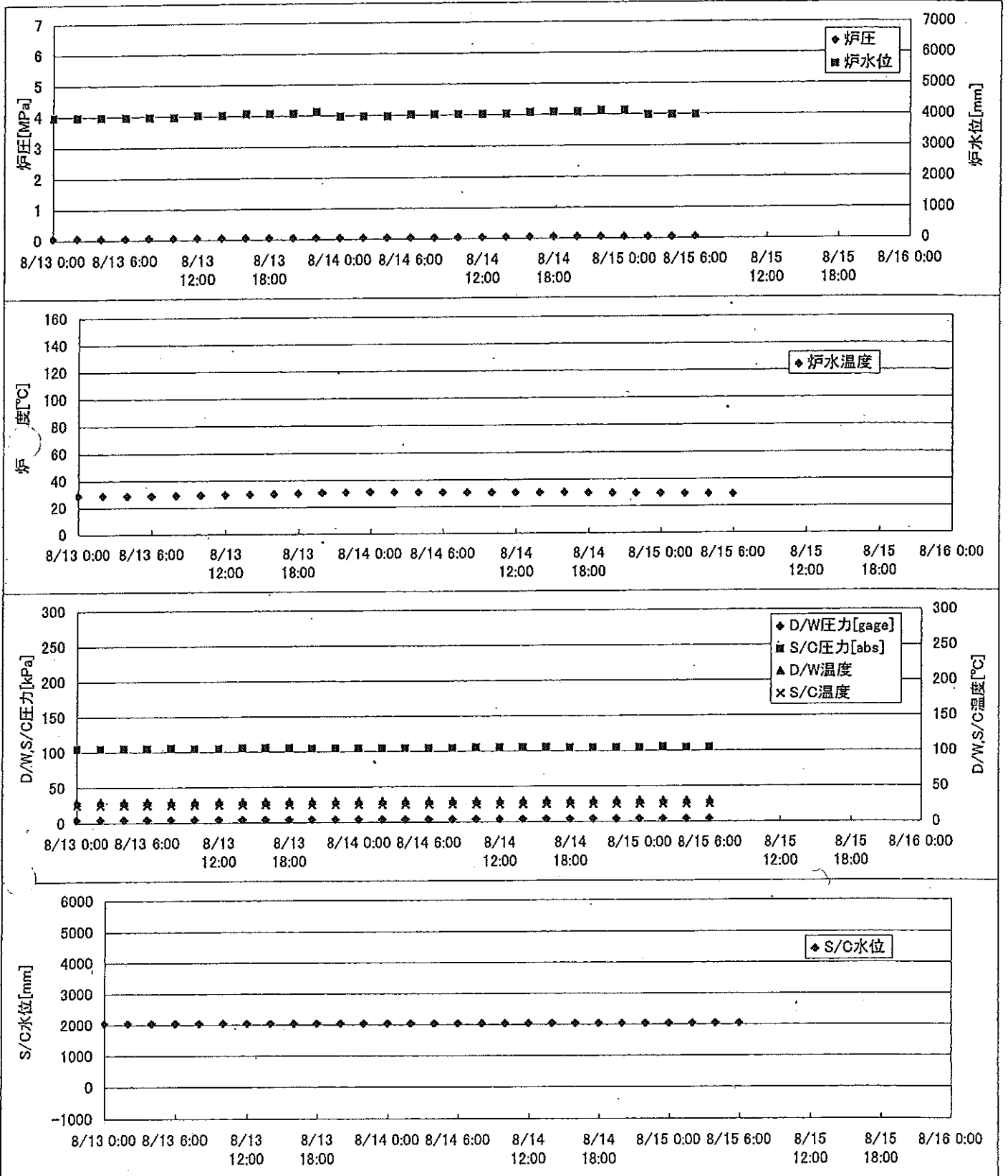
2F-2号機



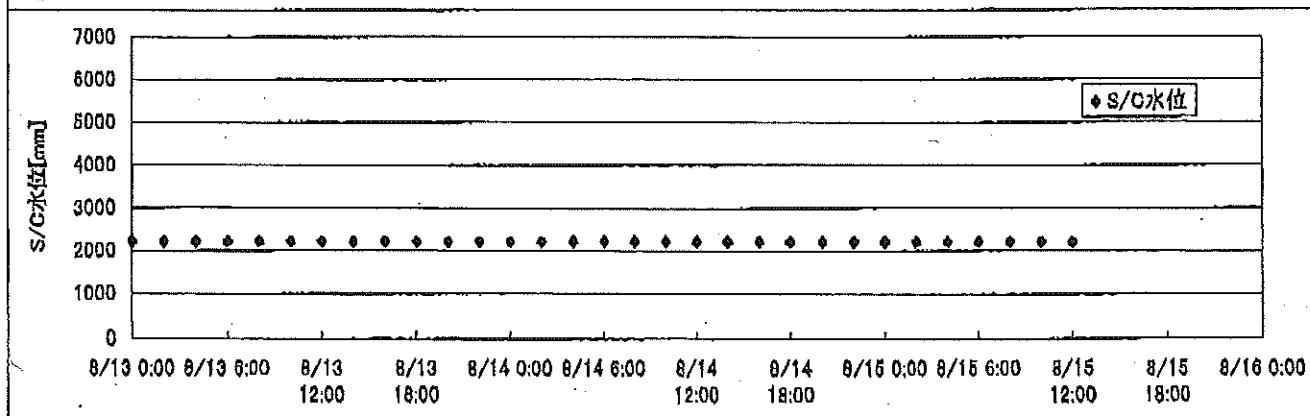
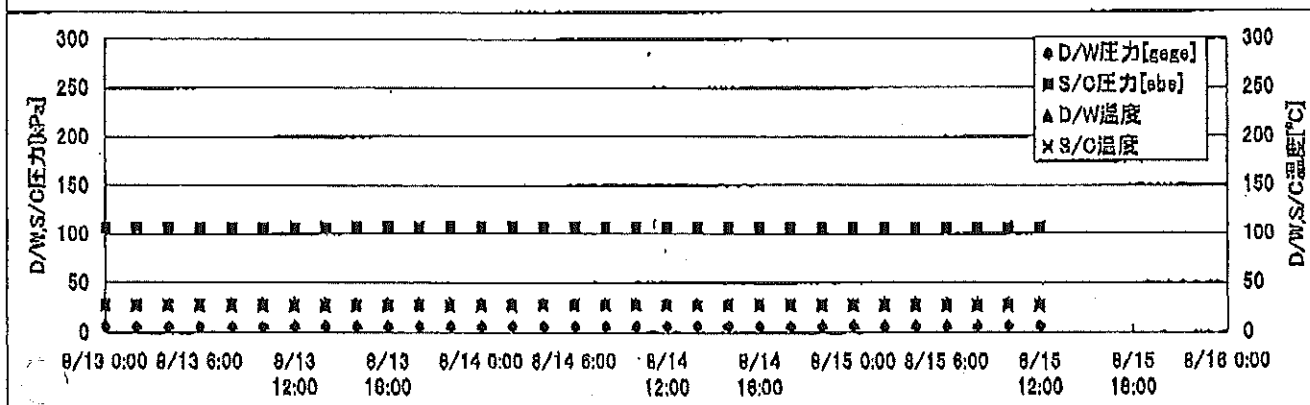
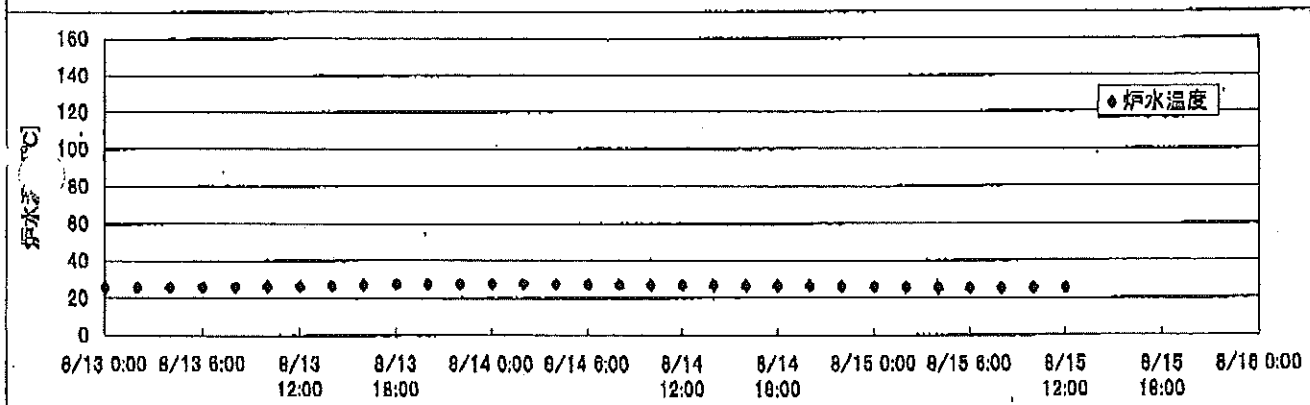
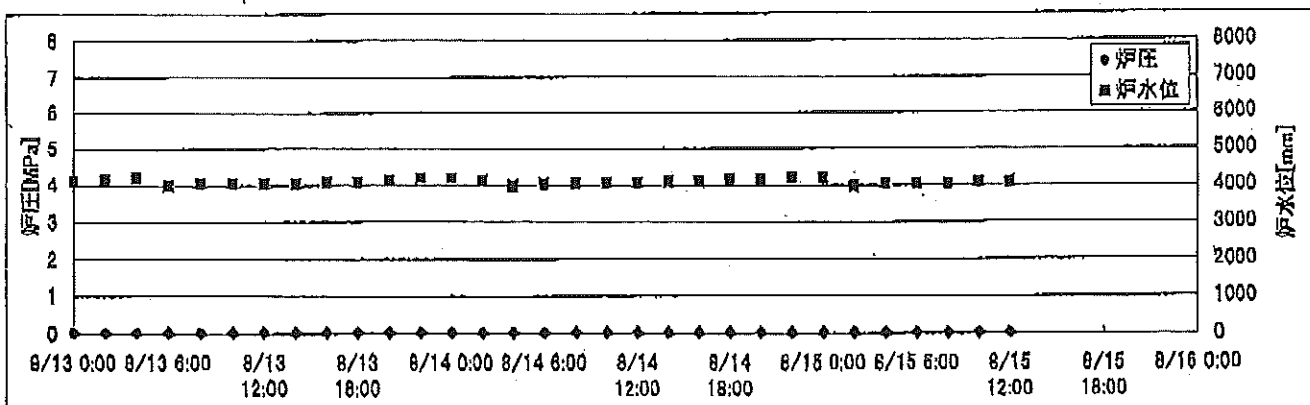
2F-3号機



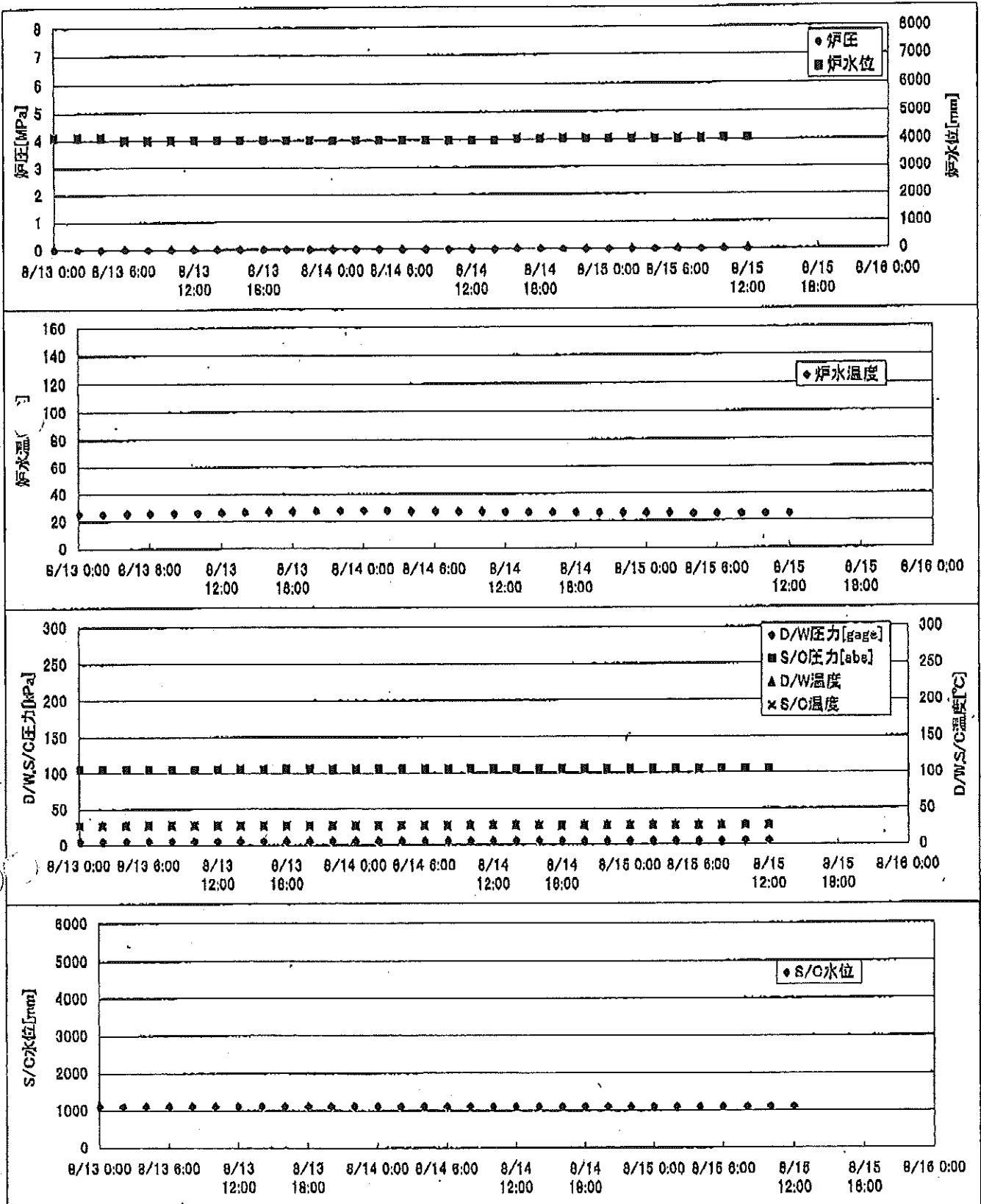
2F-4号機



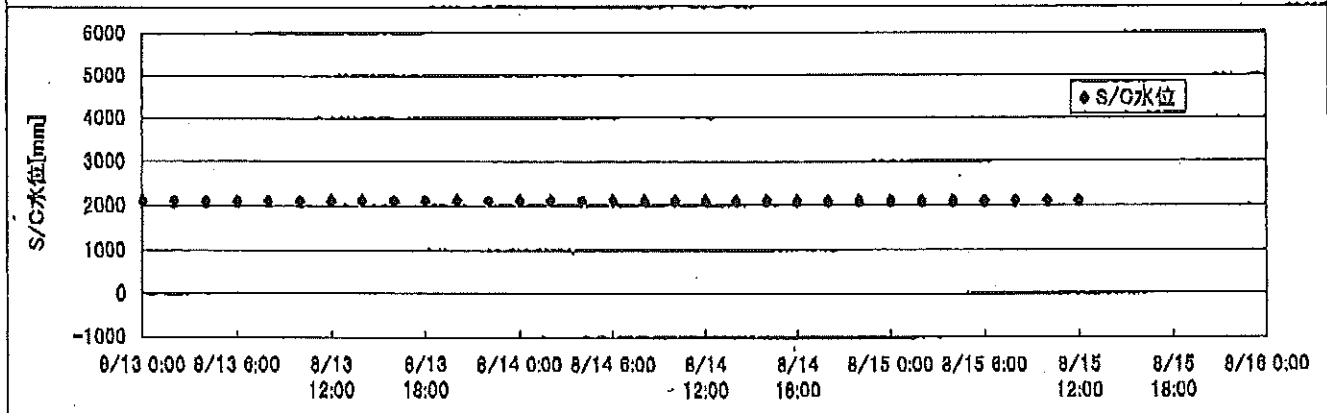
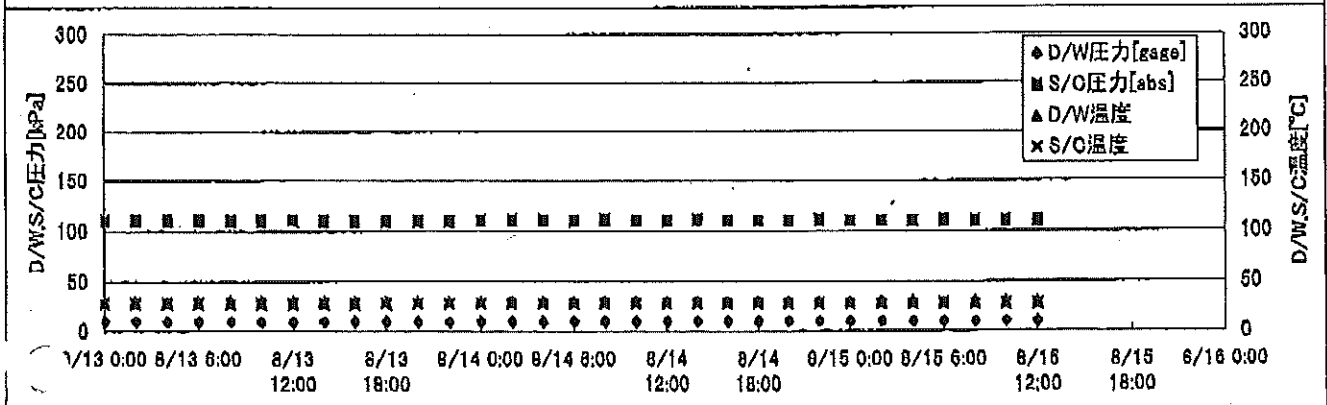
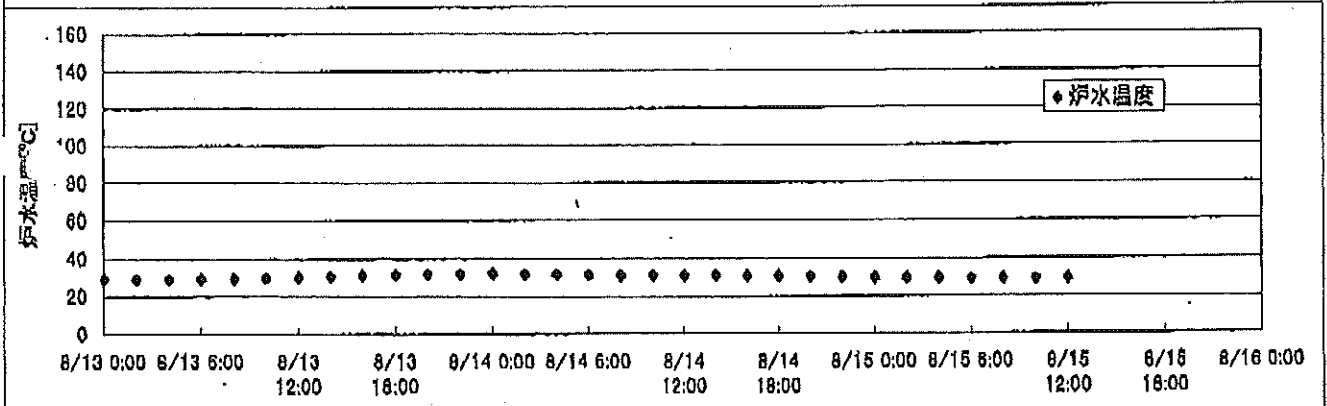
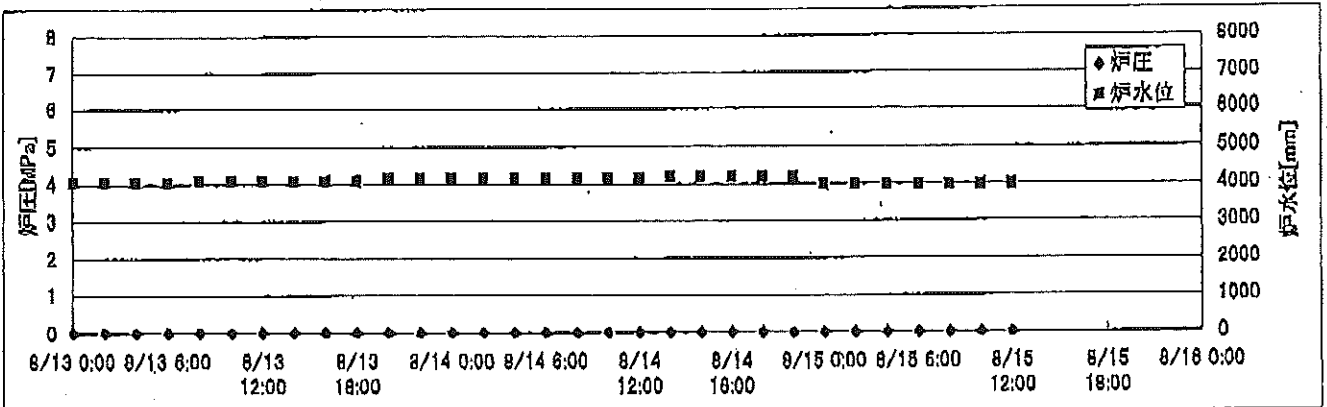
2F-1号機



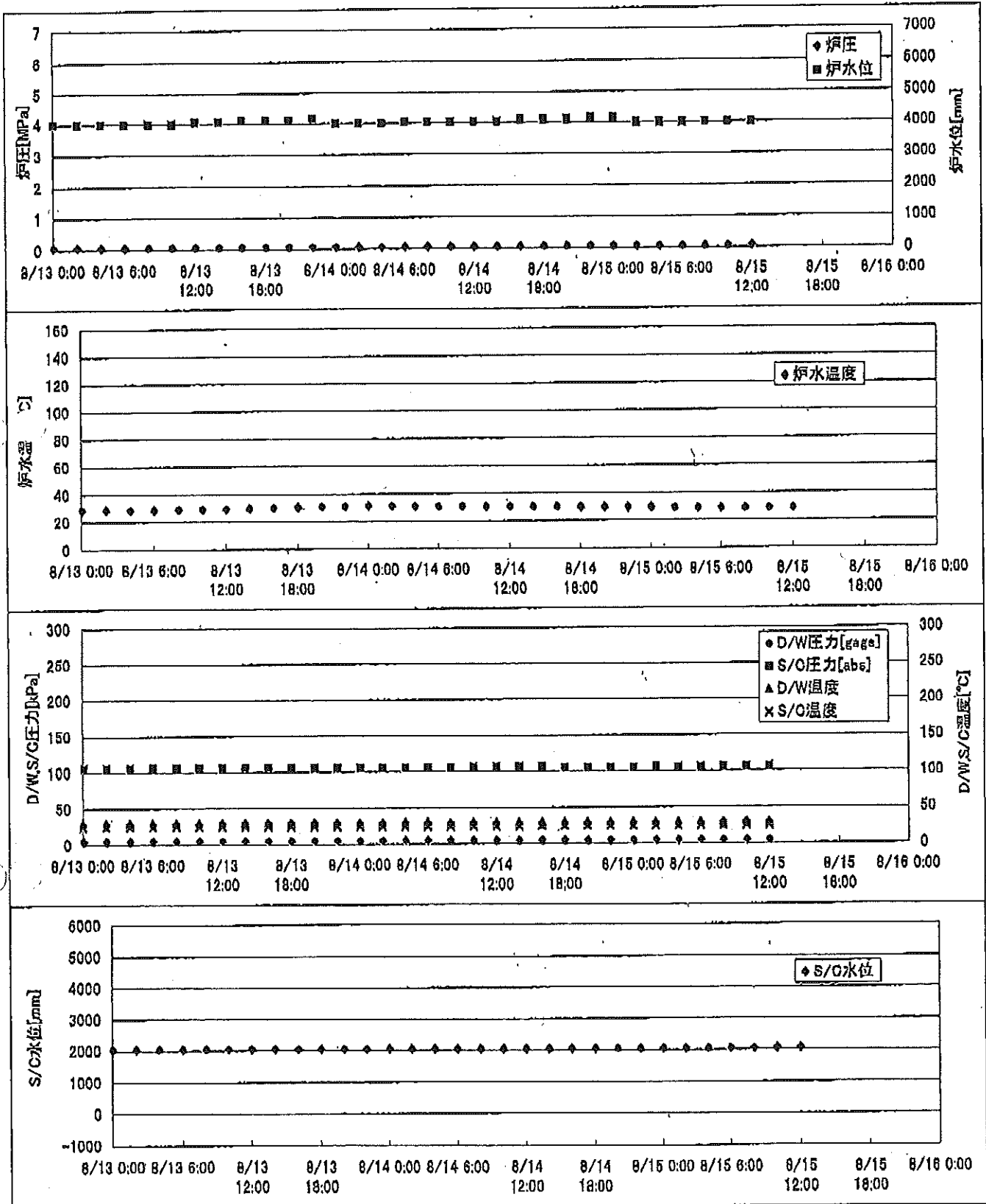
2F-2号機



2F-3号機



2F-4号機



2F-1号機

※燃料頂部(TAF)からの水位=炉水位+4200[mm]

時間	炉圧 [MPa (gage)]	炉水位 [mm] 停止時	炉水温度[°C]	D/W圧力 [kPa(gage)]	D/W温度 [°C]	S/C圧力 [kPa(abs)]	S/C水位 [mm]	S/C温度 [°C]
2011/8/13 0:00	0.04	4100	25.9	6	28.6	106	2220	27
2011/8/13 2:00	0.04	4150	25.8	6	28.7	106	2220	27
2011/8/13 4:00	0.04	4200	25.9	6	28.7	106	2220	27
2011/8/13 6:00	0.04	4000	26.0	6	28.7	106	2219	27
2011/8/13 8:00	0.04	4050	26.1	6	28.7	106	2219	27
2011/8/13 10:00	0.04	4050	26.2	6	28.7	106	2219	27
2011/8/13 12:00	0.04	4050	26.5	6	28.7	106	2220	27
2011/8/13 14:00	0.04	4050	26.8	6	28.7	106	2220	27
2011/8/13 16:00	0.04	4100	27.1	6	28.7	106	2220	27
2011/8/13 18:00	0.04	4100	27.4	6	28.7	106	2220	27
2011/8/13 20:00	0.04	4150	27.6	6	28.7	106	2219	27
2011/8/13 22:00	0.04	4200	27.7	6	28.7	106	2219	27
2011/8/14 0:00	0.04	4200	27.7	6	28.7	106	2219	27
2011/8/14 2:00	0.04	4150	27.7	6	28.8	106	2219	27
2011/8/14 4:00	0.04	4000	27.6	6	28.8	106	2219	27
2011/8/14 6:00	0.04	4050	27.3	6	28.9	106	2220	27
2011/8/14 8:00	0.04	4050	27.1	6	28.8	106	2219	27
2011/8/14 10:00	0.04	4050	27.0	6	28.8	106	2219	27
2011/8/14 12:00	0.04	4050	26.9	6	28.9	106	2219	27
2011/8/14 14:00	0.04	4100	26.9	6	28.9	106	2220	27
2011/8/14 16:00	0.04	4100	26.7	6	28.9	106	2220	27
2011/8/14 18:00	0.04	4150	26.6	6	28.9	106	2219	27
2011/8/14 20:00	0.04	4150	26.4	6	28.9	106	2219	27
2011/8/14 22:00	0.04	4200	26.2	6	28.9	106	2219	27
2011/8/15 0:00	0.04	4200	26.1	6	28.9	106	2219	27
2011/8/15 2:00	0.04	4000	25.8	6	29.0	106	2219	27
2011/8/15 4:00	0.04	4050	25.6	6	28.9	106	2219	27
2011/8/15 6:00	0.04	4050	25.3	6	28.9	108	2219	27
2011/8/15 8:00	0.04	4050	25.3	6	28.9	106	2219	27
2011/8/15 10:00	0.04	4100	25.3	6	29.0	106	2219	27
2011/8/15 12:00	0.04	4100	25.4	6	28.9	106	2200	27
2011/8/15 14:00								
2011/8/15 16:00								
2011/8/15 18:00								
2011/8/15 20:00								
2011/8/15 22:00								

2F-2号機

※燃料頂部(TAF)からの水位=炉水位+4200[mm]

時間	炉圧 [MPa (gage)]	炉水位 [mm] 停止時	炉水温度[°C]	D/W圧力 [kPa(gage)]	D/W温度 [°C]	S/C圧力 [kPa(abs)]	S/C水位 [mm]	S/C温度 [°C]
2011/8/13 0:00	0.00	4100	25.5	5	28.3	105	1100	27
2011/8/13 2:00	0.00	4100	25.4	5	28.3	105	1100	27
2011/8/13 4:00	0.00	4100	25.6	5	28.3	105	1100	27
2011/8/13 6:00	0.00	4000	25.8	5	28.3	105	1100	27
2011/8/13 8:00	0.00	4000	26.0	5	28.3	105	1100	27
2011/8/13 10:00	0.00	4000	26.3	5	28.4	105	1100	27
2011/8/13 12:00	0.00	4000	26.6	5	28.3	105	1100	27
2011/8/13 14:00	0.00	4000	26.8	5	28.4	105	1100	27
2011/8/13 16:00	0.00	4000	27.2	5	28.4	105	1100	27
2011/8/13 18:00	0.00	4000	27.5	5	28.4	105	1100	27
2011/8/13 20:00	0.00	4000	27.8	5	28.4	105	1100	27
2011/8/13 22:00	0.00	4000	28.0	5	28.4	105	1100	27
2011/8/14 0:00	0.00	4000	28.1	5	28.3	105	1100	27
2011/8/14 2:00	0.00	4000	27.9	5	28.3	105	1100	27
2011/8/14 4:00	0.00	4000	27.5	5	28.4	105	1100	27
2011/8/14 6:00	0.00	4000	27.1	5	28.3	105	1100	27
2011/8/14 8:00	0.00	4000	27.0	5	28.3	105	1100	27
2011/8/14 10:00	0.00	4000	26.9	5	28.4	105	1100	27
2011/8/14 12:00	0.00	4000	26.8	5	28.4	105	1100	27
2011/8/14 14:00	0.00	4000	26.7	5	28.4	105	1100	27
2011/8/14 16:00	0.00	4050	26.5	5	28.4	105	1100	27
2011/8/14 18:00	0.00	4050	26.3	5	28.4	105	1100	27
2011/8/14 20:00	0.00	4050	26.1	5	28.4	105	1100	27
2011/8/14 22:00	0.00	4050	26.0	5	28.4	105	1100	27
2011/8/15 0:00	0.00	4050	25.8	5	28.4	105	1100	27
2011/8/15 2:00	0.00	4050	25.6	5	28.4	105	1100	27
2011/8/15 4:00	0.00	4050	25.3	5	28.4	105	1100	27
2011/8/15 6:00	0.00	4050	25.2	5	28.4	105	1100	27
2011/8/15 8:00	0.00	4050	25.1	5	28.4	105	1100	27
2011/8/15 10:00	0.00	4050	25.2	5	28.4	105	1100	27
2011/8/15 12:00	0.00	4050	25.2	5	28.4	105	1100	27
2011/8/15 14:00								
2011/8/15 16:00								
2011/8/15 18:00								
2011/8/15 20:00								
2011/8/15 22:00								

2F-3号機

※燃料頂部(TAF)からの水位=炉水位+4200[mm]

時間	炉圧 [MPa (gage)]	炉水位 [mm] 停止時	炉水温度[°C]	D/W圧力 [kPa(gage)]	D/W温度 [°C]	S/C圧力 [kPa(abs)]	S/C水位 [mm]	S/C温度 [°C]
2011/8/13 0:00	0.01	4050	29.7	10	29.6	110	2100	28
2011/8/13 2:00	0.02	4050	29.5	10	29.6	110	2100	28
2011/8/13 4:00	0.02	4050	29.6	10	29.6	110	2100	28
2011/8/13 6:00	0.02	4050	29.8	10	29.6	110	2100	28
2011/8/13 8:00	0.02	4100	29.9	10	29.6	110	2100	28
2011/8/13 10:00	0.02	4100	30.2	10	29.5	110	2100	28
2011/8/13 12:00	0.02	4100	30.4	10	29.6	111	2100	28
2011/8/13 14:00	0.02	4100	30.7	10	29.6	110	2100	28
2011/8/13 16:00	0.02	4100	31.3	10	29.6	110	2100	28
2011/8/13 18:00	0.02	4100	31.6	10	29.6	110	2100	28
2011/8/13 20:00	0.02	4150	32.0	10	29.8	110	2100	28
2011/8/13 22:00	0.02	4150	32.2	10	29.8	110	2100	28
2011/8/14 0:00	0.02	4150	32.3	10	29.9	111	2100	28
2011/8/14 2:00	0.02	4150	32.0	10	30.0	111	2100	28
2011/8/14 4:00	0.02	4150	31.9	10	30.0	111	2100	28
2011/8/14 6:00	0.02	4150	31.6	10	30.0	110	2100	28
2011/8/14 8:00	0.02	4150	31.4	10	29.9	111	2100	28
2011/8/14 10:00	0.02	4150	31.3	10	29.9	110	2100	28
2011/8/14 12:00	0.02	4150	31.2	10	29.9	110	2100	28
2011/8/14 14:00	0.02	4200	31.2	10	30.0	111	2100	28
2011/8/14 16:00	0.02	4200	31.0	10	29.9	110	2100	28
2011/8/14 18:00	0.02	4200	30.7	10	30.0	110	2100	28
2011/8/14 20:00	0.02	4200	30.5	10	29.8	110	2100	28
2011/8/14 22:00	0.02	4200	30.3	10	29.7	111	2100	28
2011/8/15 0:00	0.01	4000	30.1	10	29.8	110	2100	28
2011/8/15 2:00	0.01	4000	29.9	10	29.9	110	2100	28
2011/8/15 4:00	0.01	4000	29.7	10	29.8	110	2100	28
2011/8/15 6:00	0.01	4000	29.4	10	29.7	111	2100	28
2011/8/15 8:00	0.01	4000	29.3	10	29.7	110	2100	28
2011/8/15 10:00	0.01	4000	29.3	10	29.7	110	2100	28
2011/8/15 12:00	0.01	4000	29.4	10	29.7	110	2100	28
2011/8/15 14:00								
2011/8/15 16:00								
2011/8/15 18:00								
2011/8/15 20:00								
2011/8/15 22:00								

2F-4号機

※燃料頂部(TAF)からの水位=炉水位+4200[mm]

時間	炉圧 [MPa (gage)]	炉水位 [mm] 停止時	炉水温度[°C]	D/W圧力 [kPa(gage)]	D/W温度 [°C]	S/C圧力 [kPa(abs)]	S/C水位 [mm]	S/C温度 [°C]
2011/8/13 0:00	0.08	4000	28.9	5	29.7	105	2050	25
2011/8/13 2:00	0.08	4000	28.9	5	29.8	105	2050	25
2011/8/13 4:00	0.07	4000	28.8	5	29.7	105	2050	25
2011/8/13 6:00	0.07	4000	28.8	5	29.8	105	2050	25
2011/8/13 8:00	0.08	4000	29.0	5	29.7	106	2050	25
2011/8/13 10:00	0.08	4000	29.2	5	29.7	105	2050	25
2011/8/13 12:00	0.08	4050	29.4	5	29.8	105	2050	25
2011/8/13 14:00	0.08	4050	29.7	5	29.7	106	2050	25
2011/8/13 16:00	0.08	4100	30.1	5	29.9	106	2050	25
2011/8/13 18:00	0.08	4100	30.4	5	29.9	106	2050	25
2011/8/13 20:00	0.08	4100	30.8	5	29.9	105	2050	25
2011/8/13 22:00	0.08	4150	31.1	5	29.8	105	2050	25
2011/8/14 0:00	0.07	4000	31.3	5	29.9	105	2050	25
2011/8/14 2:00	0.07	4000	31.2	5	30.0	105	2050	25
2011/8/14 4:00	0.07	4000	31.1	5	30.1	105	2050	25
2011/8/14 6:00	0.07	4050	30.9	5	29.9	105	2050	25
2011/8/14 8:00	0.07	4050	30.7	5	30.0	105	2050	25
2011/8/14 10:00	0.07	4050	30.5	5	29.9	106	2050	25
2011/8/14 12:00	0.07	4050	30.5	5	30.0	106	2050	25
2011/8/14 14:00	0.08	4050	30.4	5	29.9	106	2050	25
2011/8/14 16:00	0.08	4100	30.3	5	29.9	106	2050	25
2011/8/14 18:00	0.08	4100	30.1	5	29.9	105	2050	25
2011/8/14 20:00	0.08	4100	29.9	5	29.9	105	2050	25
2011/8/14 22:00	0.08	4150	29.7	5	29.8	105	2050	25
2011/8/15 0:00	0.08	4150	29.5	5	30.1	105	2050	25
2011/8/15 2:00	0.07	4000	29.3	5	29.9	106	2050	25
2011/8/15 4:00	0.07	4000	29.0	5	29.8	105	2050	25
2011/8/15 6:00	0.07	4000	28.8	5	29.8	105	2050	25
2011/8/15 8:00	0.07	4000	28.6	5	30.0	105	2050	25
2011/8/15 10:00	0.07	4000	28.6	5	29.8	105	2050	25
2011/8/15 12:00	0.07	4000	28.6	5	29.9	106	2050	25
2011/8/15 14:00								
2011/8/15 16:00								
2011/8/15 18:00								
2011/8/15 20:00								
2011/8/15 22:00								