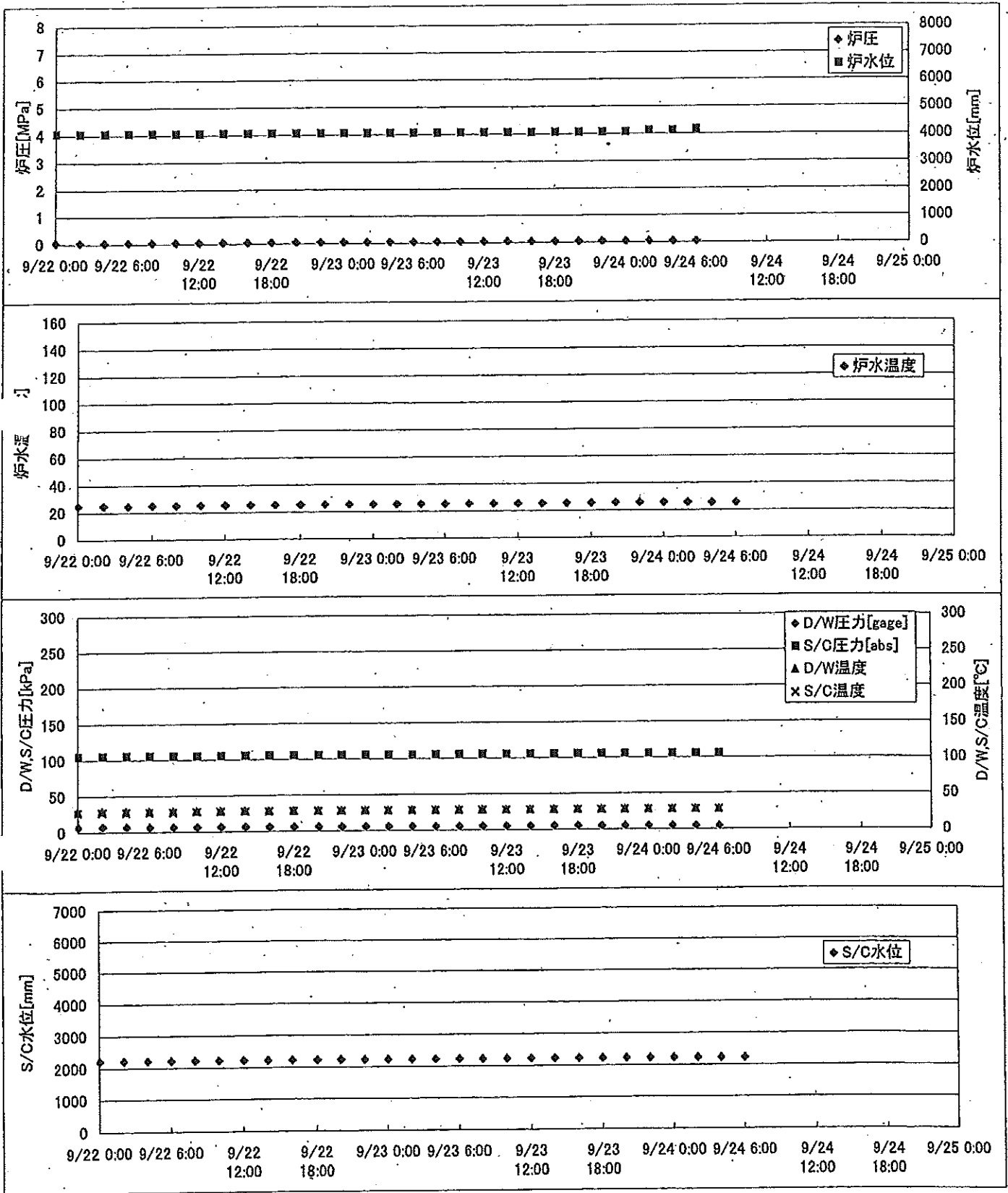
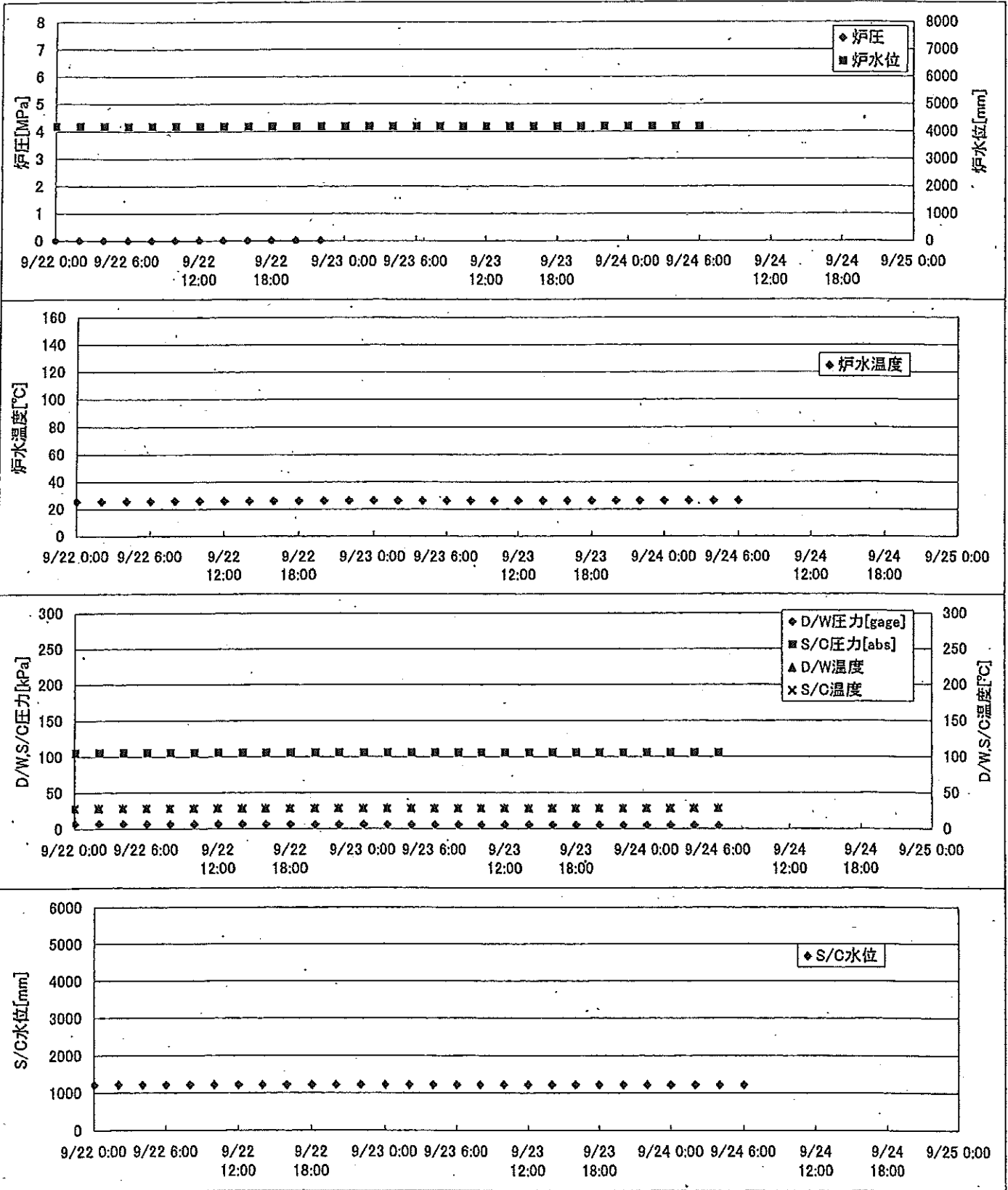


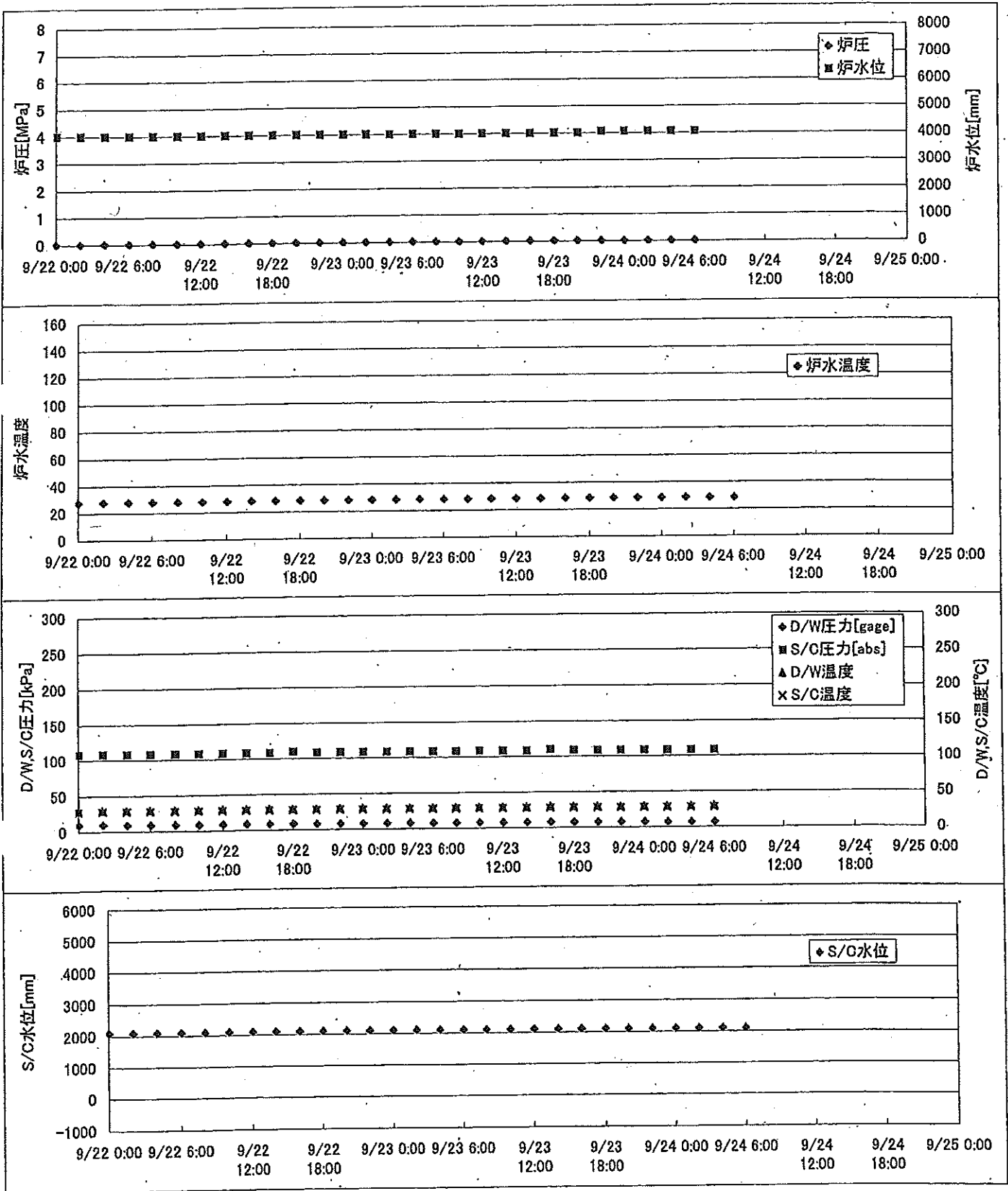
2F-1号機



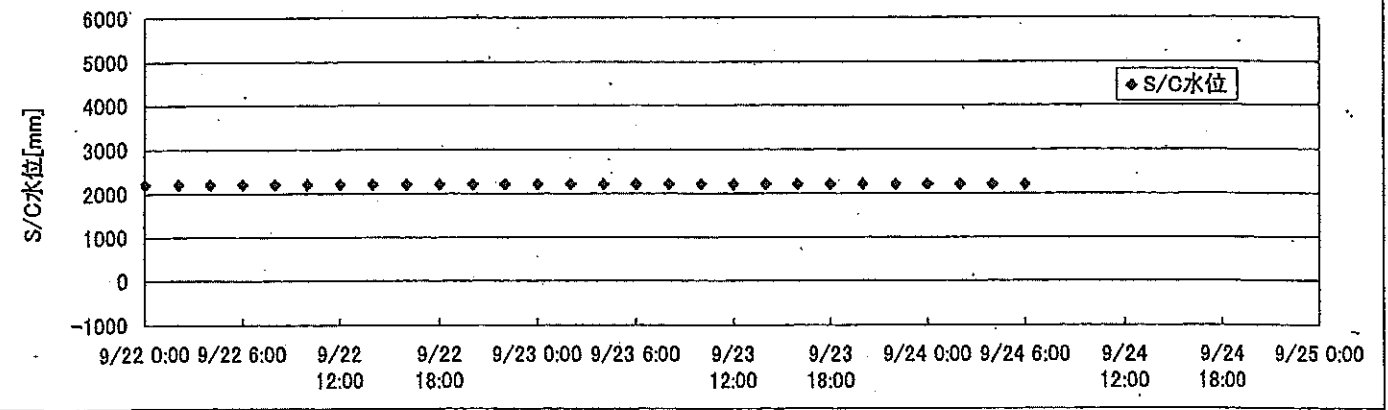
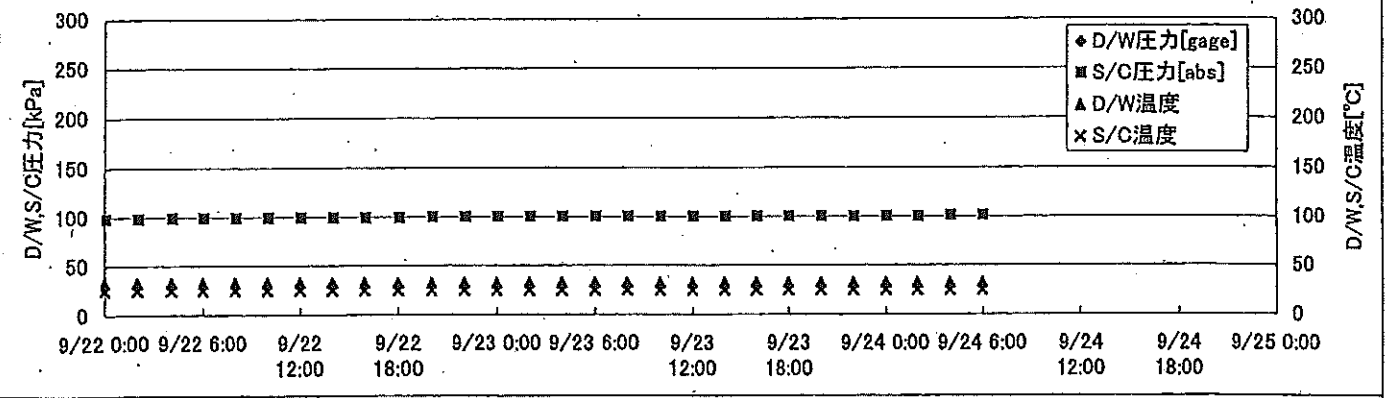
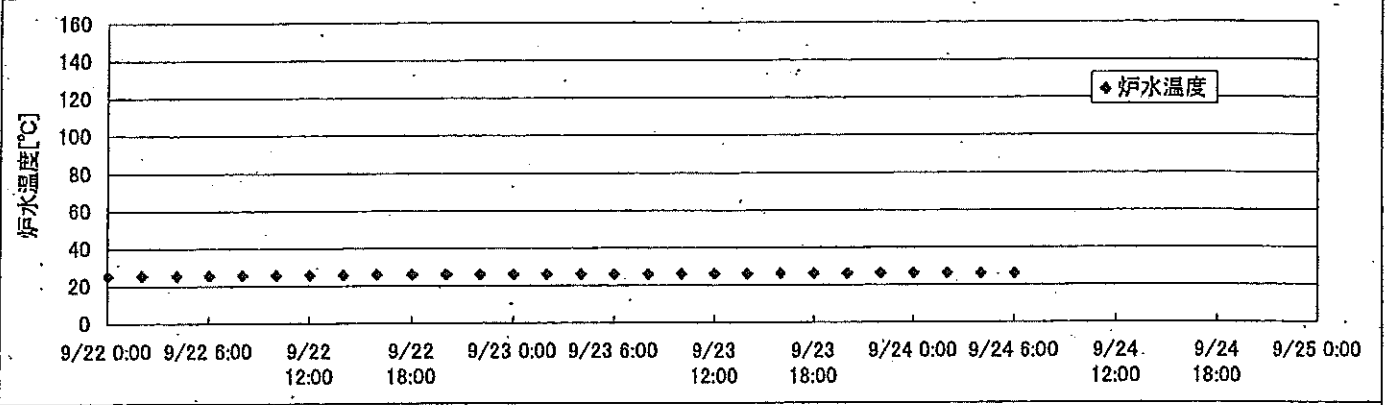
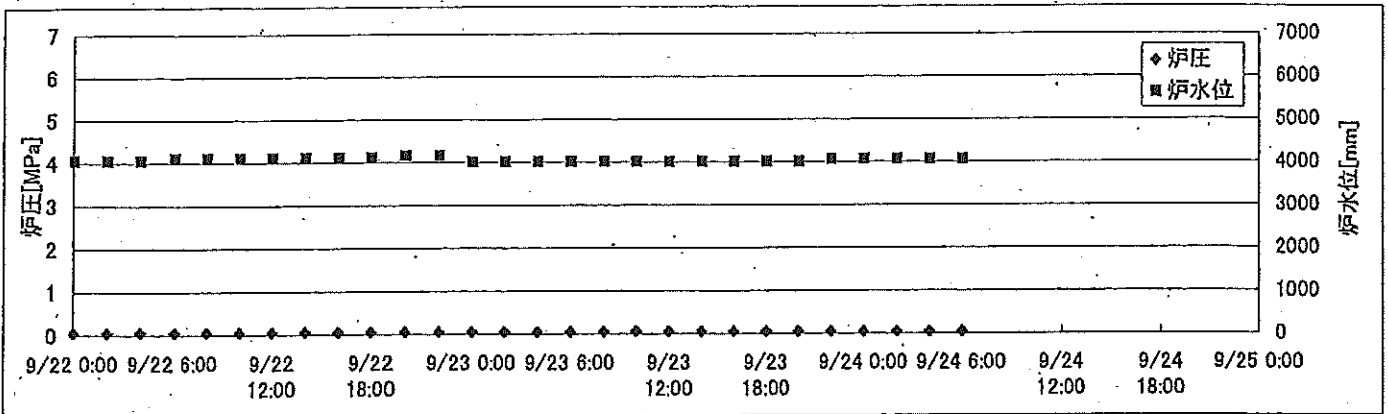
2F-2号機



2F-3号機



2F-4号機



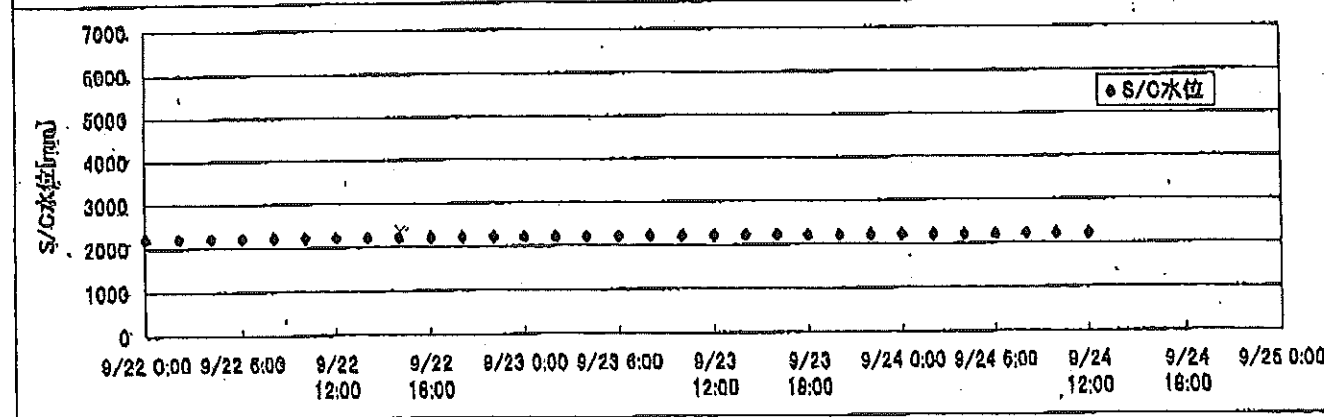
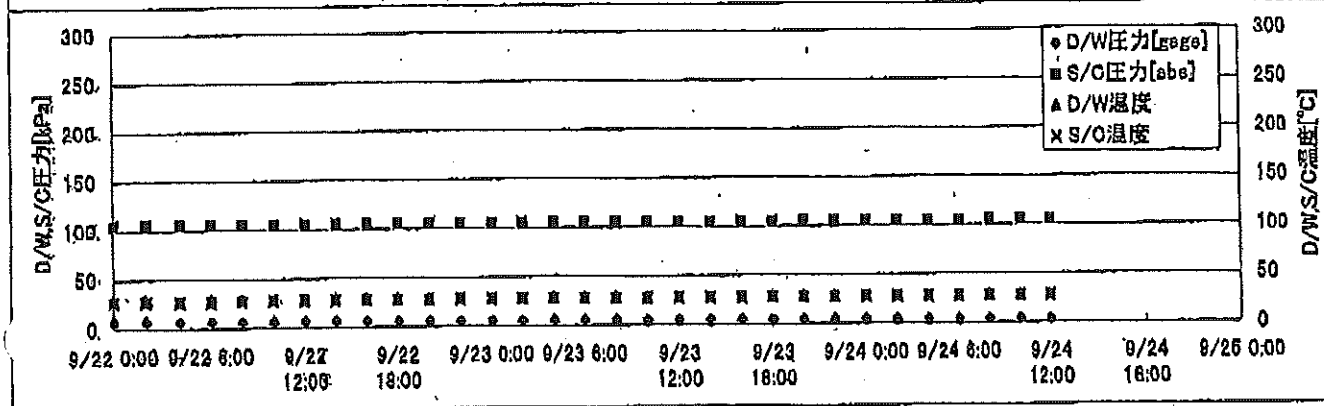
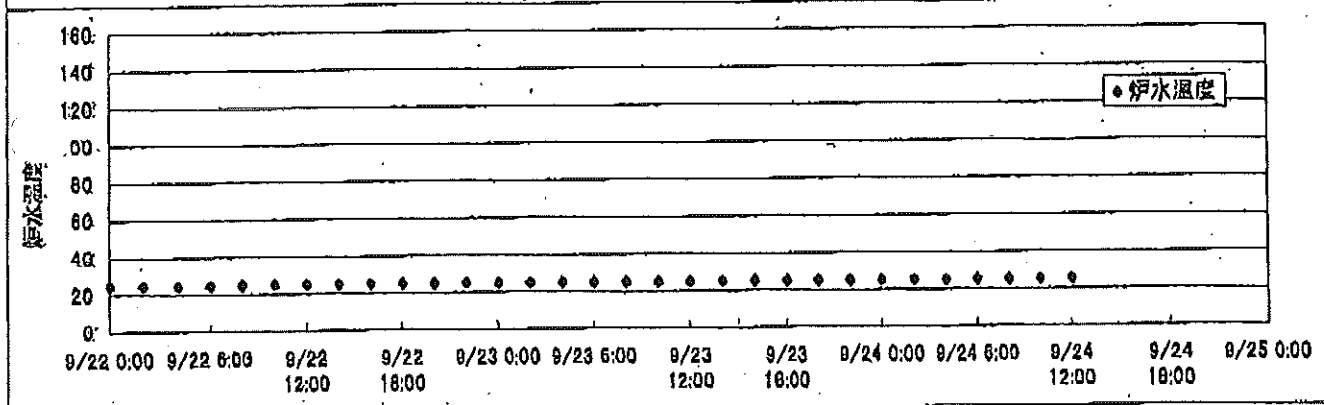
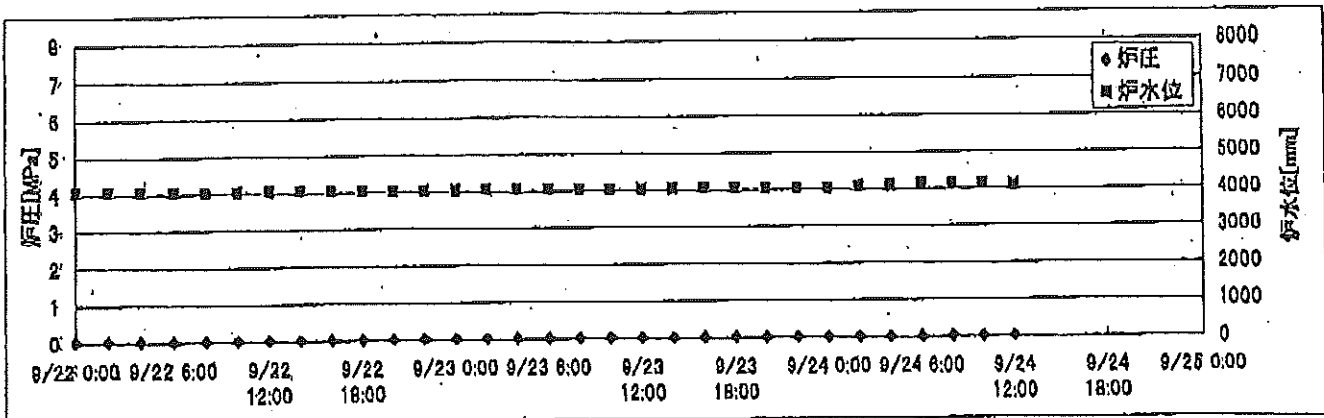
2F-4号機

※燃料頂部(TAF)からの水位=炉水位+4200[mm]

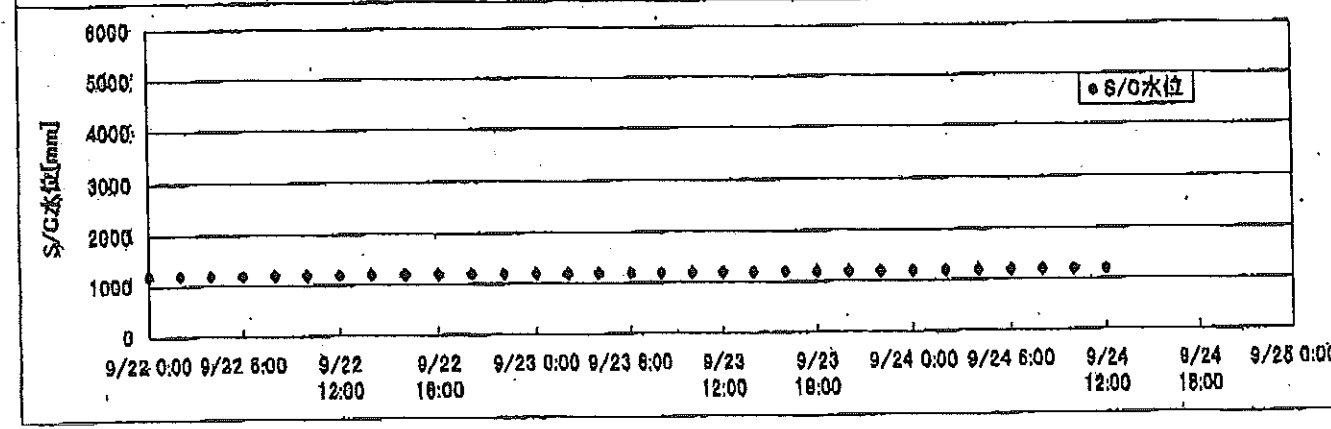
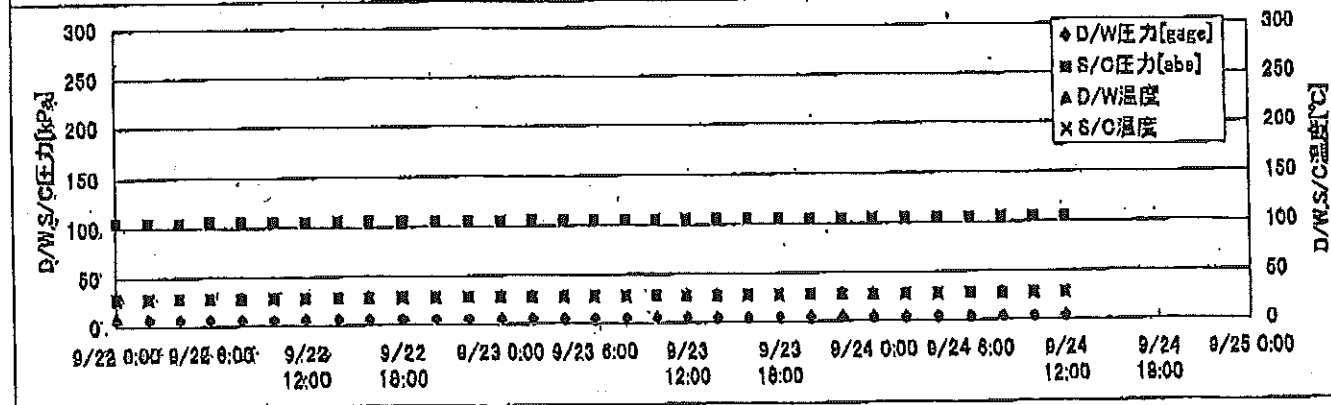
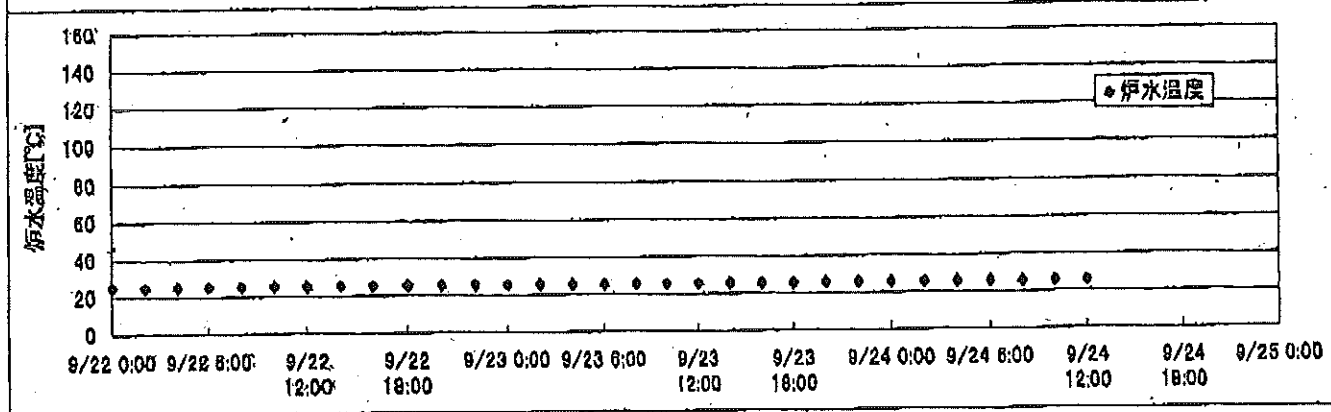
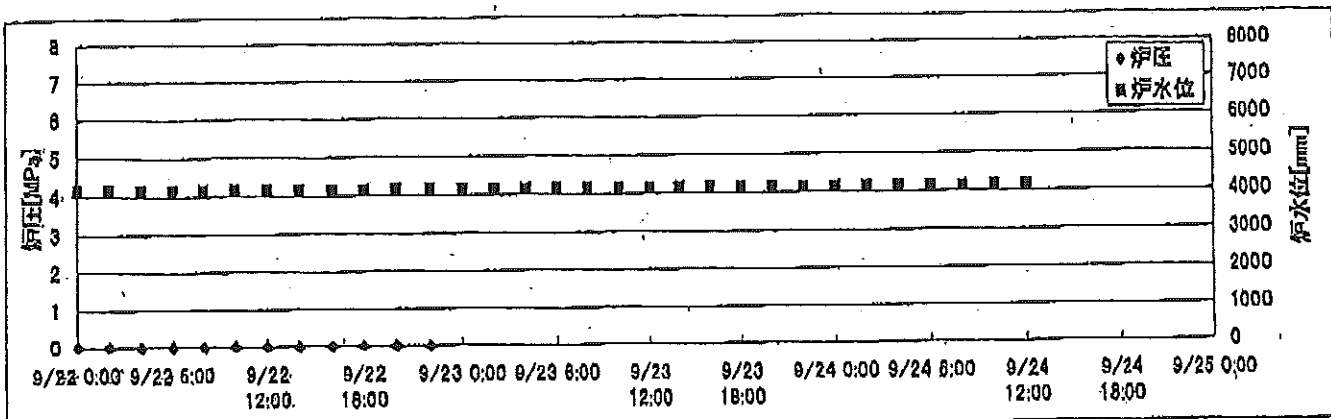
時間	炉圧 [MPa (gage)]	炉水位 [mm] 停止時	炉水温度[°C]	D/W圧力 [kPa(gage)]	D/W温度 [°C]	S/C圧力 [kPa(abs)]	S/C水位 [mm]	S/C温度 [°C]
2011/9/22 0:00	0.05	4050	25.2		32.6	98	2200	25
2011/9/22 2:00	0.05	4050	25.3		32.6	98	2200	25
2011/9/22 4:00	0.06	4050	25.4		32.6	99	2200	25
2011/9/22 6:00	0.05	4100	25.4		32.6	99	2200	25
2011/9/22 8:00	0.05	4100	25.5		32.6	99	2200	25
2011/9/22 10:00	0.05	4100	25.5		32.7	99	2200	25
2011/9/22 12:00	0.05	4100	25.5		32.8	99	2200	25
2011/9/22 14:00	0.05	4100	25.5		32.6	99	2200	25
2011/9/22 16:00	0.05	4100	25.6		32.6	99	2200	25
2011/9/22 18:00	0.05	4100	25.6		32.5	99	2200	25
2011/9/22 20:00	0.05	4150	25.6		32.5	100	2200	25
2011/9/22 22:00	0.05	4150	25.6		32.5	100	2200	25
2011/9/23 0:00	0.04	4000	25.6		32.5	100	2200	25
2011/9/23 2:00	0.04	4000	25.6		32.6	100	2200	25
2011/9/23 4:00	0.04	4000	25.6		32.6	100	2200	25
2011/9/23 6:00	0.04	4000	25.6		32.6	100	2200	25
2011/9/23 8:00	0.04	4000	25.6		32.6	100	2200	25
2011/9/23 10:00	0.05	4000	25.6		32.5	100	2200	25
2011/9/23 12:00	0.05	4000	25.7		32.5	100	2200	25
2011/9/23 14:00	0.05	4000	25.7		32.5	100	2200	25
2011/9/23 16:00	0.05	4000	25.8		32.4	100	2200	25
2011/9/23 18:00	0.05	4000	25.9		32.5	100	2200	25
2011/9/23 20:00	0.05	4000	25.9		32.3	100	2200	25
2011/9/23 22:00	0.04	4050	26.0		32.3	100	2200	25
2011/9/24 0:00	0.04	4050	26.0		32.3	100	2200	25
2011/9/24 2:00	0.04	4050	26.0		32.5	100	2200	25
2011/9/24 4:00	0.04	4050	25.9		32.5	101	2200	25
2011/9/24 6:00	0.04	4050	25.9		32.5	101	2200	25
2011/9/24 8:00								
2011/9/24 10:00								
2011/9/24 12:00								
2011/9/24 14:00								
2011/9/24 16:00								
2011/9/24 18:00								
2011/9/24 20:00								
2011/9/24 22:00								
2011/9/25 0:00								

D/W圧力について
 ・パーソナルエアロックドア開放中であるため、9/6 10:00 より記載せず

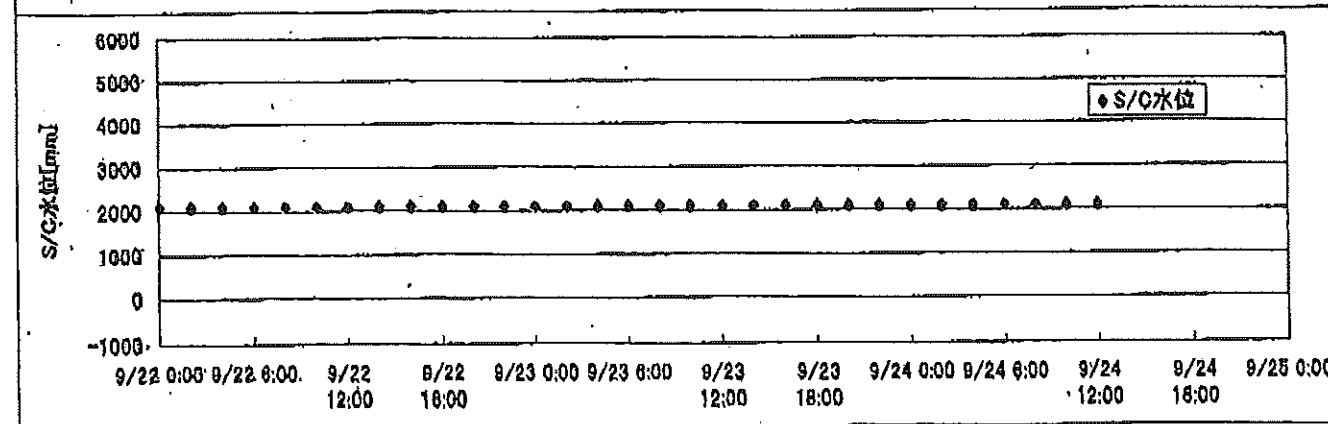
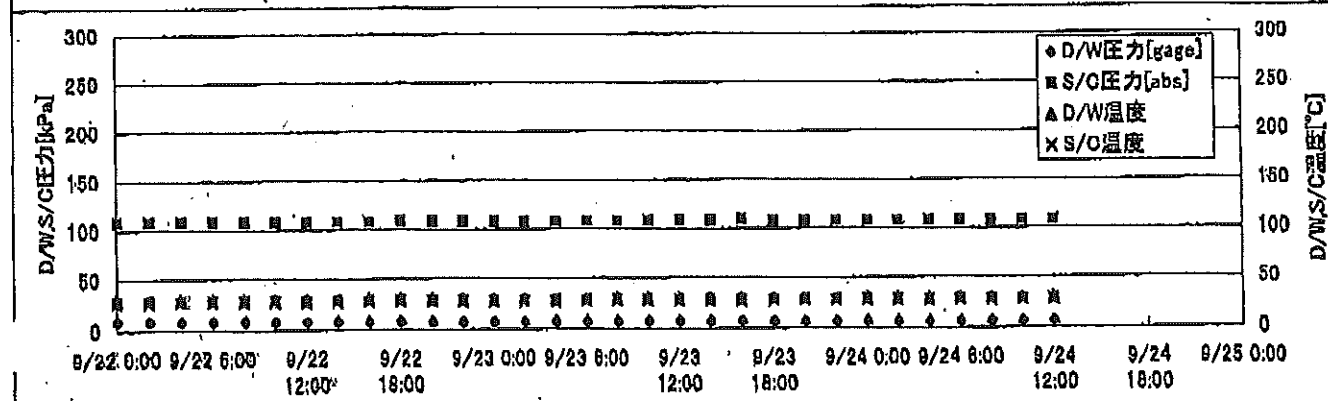
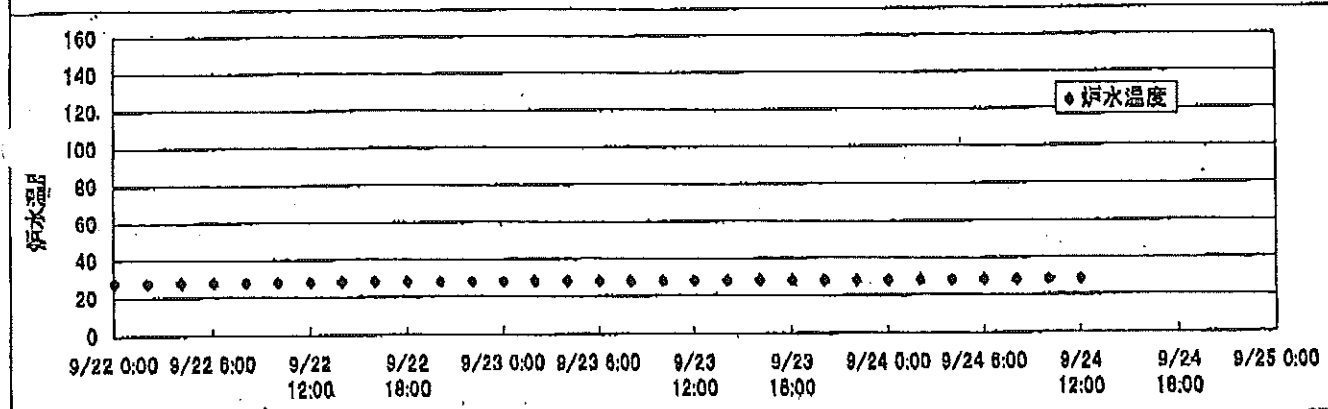
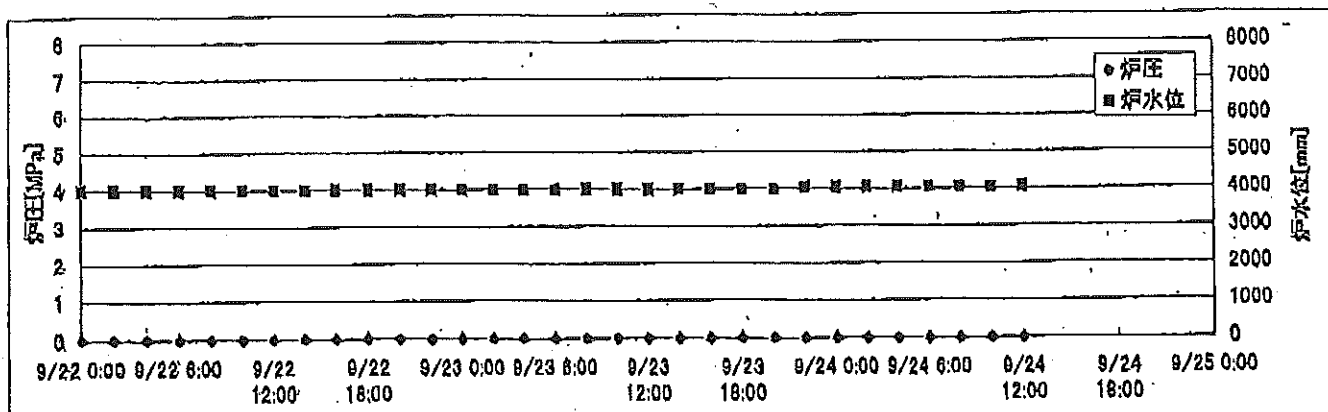
2F-1号機



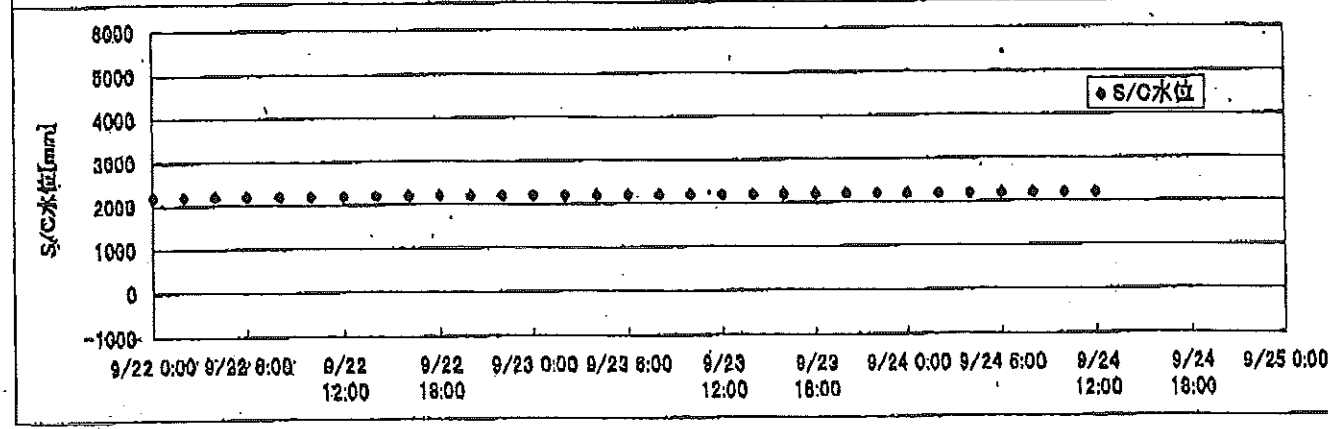
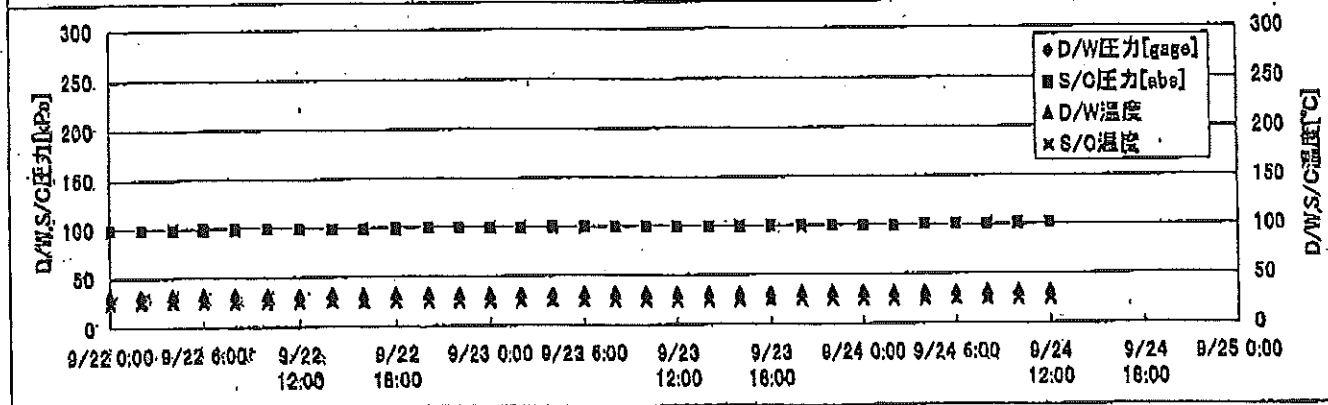
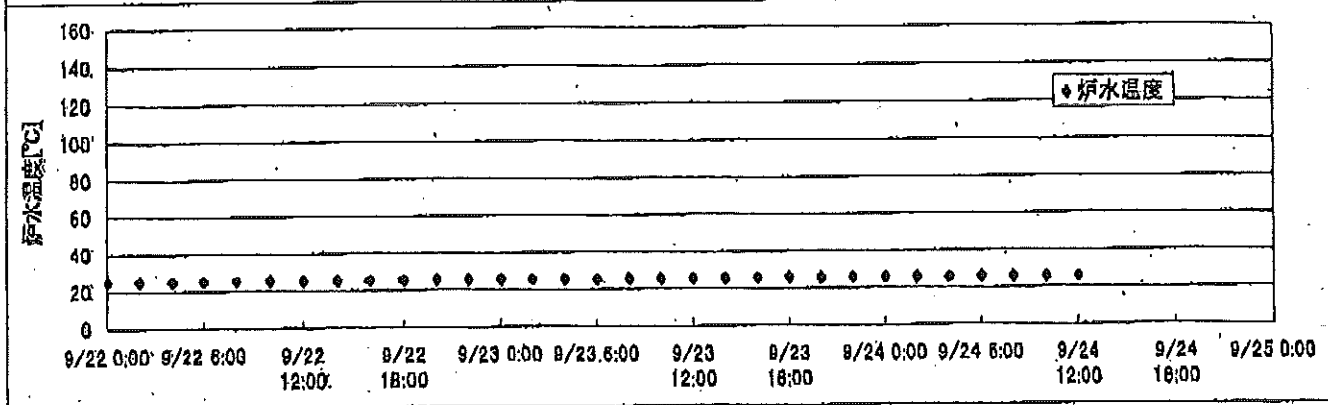
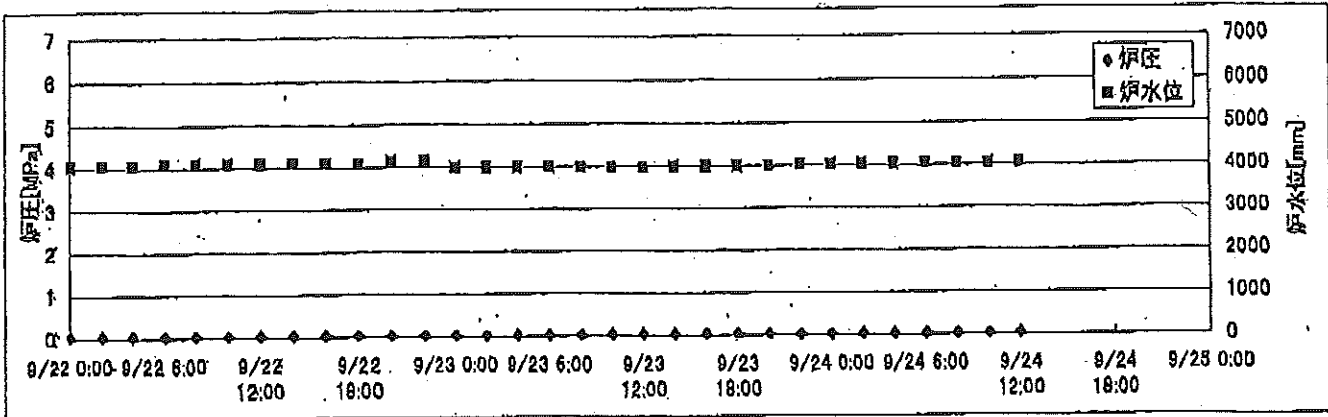
2F-2号機



2F-3号機



2F-4号機



2F-4号機

※燃料頂部(TAF)からの水位=炉水位+4200[mm]

時間	炉圧 [MPa (gage)]	炉水位 [mm] 停止時	炉水温度[°C]	D/W圧力 [kPa(gage)]	D/W温度 [°C]	S/C圧力 [kPa(abs)]	S/C水位 [mm]	S/C温度 [°C]
2011/9/22 0:00	0.05	4050	25.2		32.6	98	2200	25
2011/9/22 2:00	0.05	4050	25.3		32.6	98	2200	25
2011/9/22 4:00	0.05	4050	25.4		32.6	99	2200	25
2011/9/22 6:00	0.05	4100	25.4		32.6	99	2200	25
2011/9/22 8:00	0.05	4100	25.5		32.6	99	2200	25
2011/9/22 10:00	0.05	4100	25.5		32.7	99	2200	25
2011/9/22 12:00	0.05	4100	25.5		32.8	99	2200	25
2011/9/22 14:00	0.05	4100	25.5		32.6	99	2200	25
2011/9/22 16:00	0.05	4100	25.6		32.6	99	2200	25
2011/9/22 18:00	0.05	4100	25.6		32.5	99	2200	25
2011/9/22 20:00	0.05	4150	25.6		32.5	100	2200	25
2011/9/22 22:00	0.05	4150	25.6		32.5	100	2200	25
2011/9/23 0:00	0.04	4000	25.6		32.6	100	2200	25
2011/9/23 2:00	0.04	4000	25.6		32.6	100	2200	25
2011/9/23 4:00	0.04	4000	25.6		32.6	100	2200	25
2011/9/23 6:00	0.04	4000	25.6		32.6	100	2200	25
2011/9/23 8:00	0.04	4000	25.6		32.6	100	2200	25
2011/9/23 10:00	0.05	4000	25.6		32.5	100	2200	25
2011/9/23 12:00	0.05	4000	25.7		32.5	100	2200	25
2011/9/23 14:00	0.05	4000	25.7		32.5	100	2200	25
2011/9/23 16:00	0.05	4000	25.8		32.4	100	2200	25
2011/9/23 18:00	0.05	4000	25.9		32.5	100	2200	25
2011/9/23 20:00	0.05	4000	25.9		32.3	100	2200	25
2011/9/23 22:00	0.04	4050	26.0		32.3	100	2200	25
2011/9/24 0:00	0.04	4050	26.0		32.5	100	2200	25
2011/9/24 2:00	0.04	4050	26.0		32.5	101	2200	25
2011/9/24 4:00	0.04	4050	25.9		32.5	101	2200	25
2011/9/24 6:00	0.04	4050	25.9		32.5	101	2200	25
2011/9/24 8:00	0.04	4050	25.8		32.5	101	2200	25
2011/9/24 10:00	0.05	4050	25.8		32.4	101	2200	25
2011/9/24 12:00	0.05	4050	25.9		32.5	101	2200	25
2011/9/24 14:00								
2011/9/24 16:00								
2011/9/24 18:00								
2011/9/24 20:00								
2011/9/24 22:00								
2011/9/25 0:00								

D/W圧力について
 ・パーソナルエアロックドア開放中であるため、9/6 10:00 より記載せず