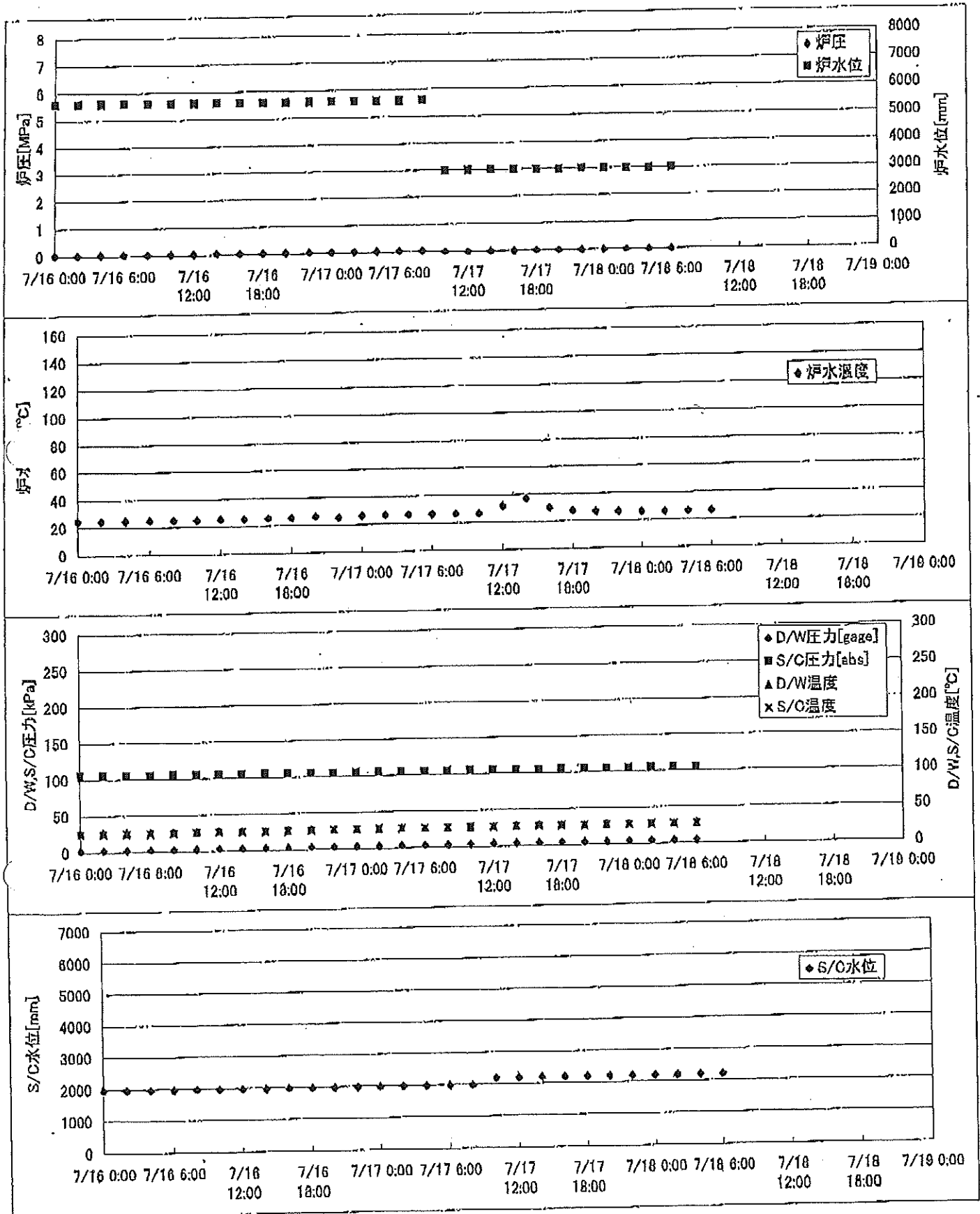
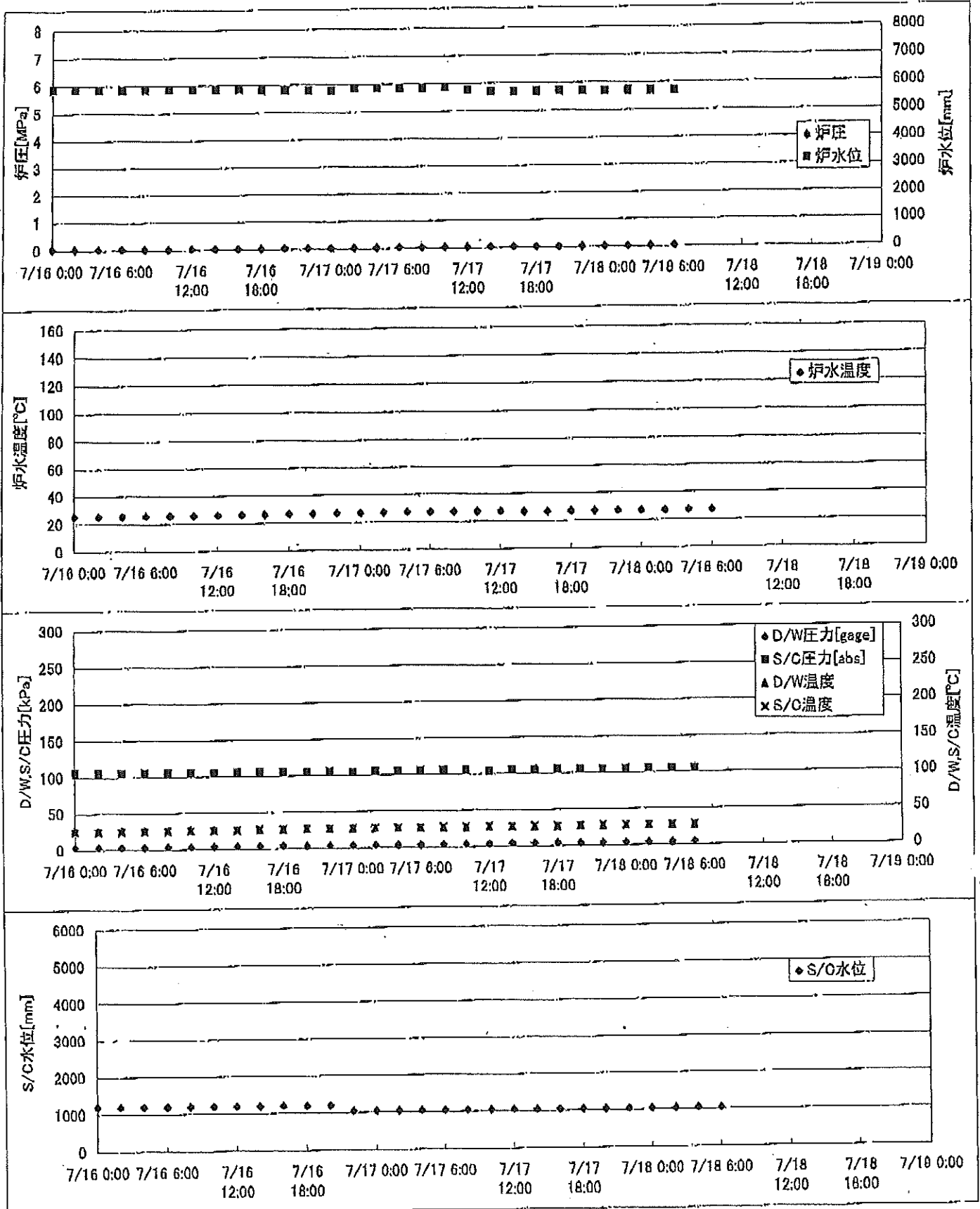


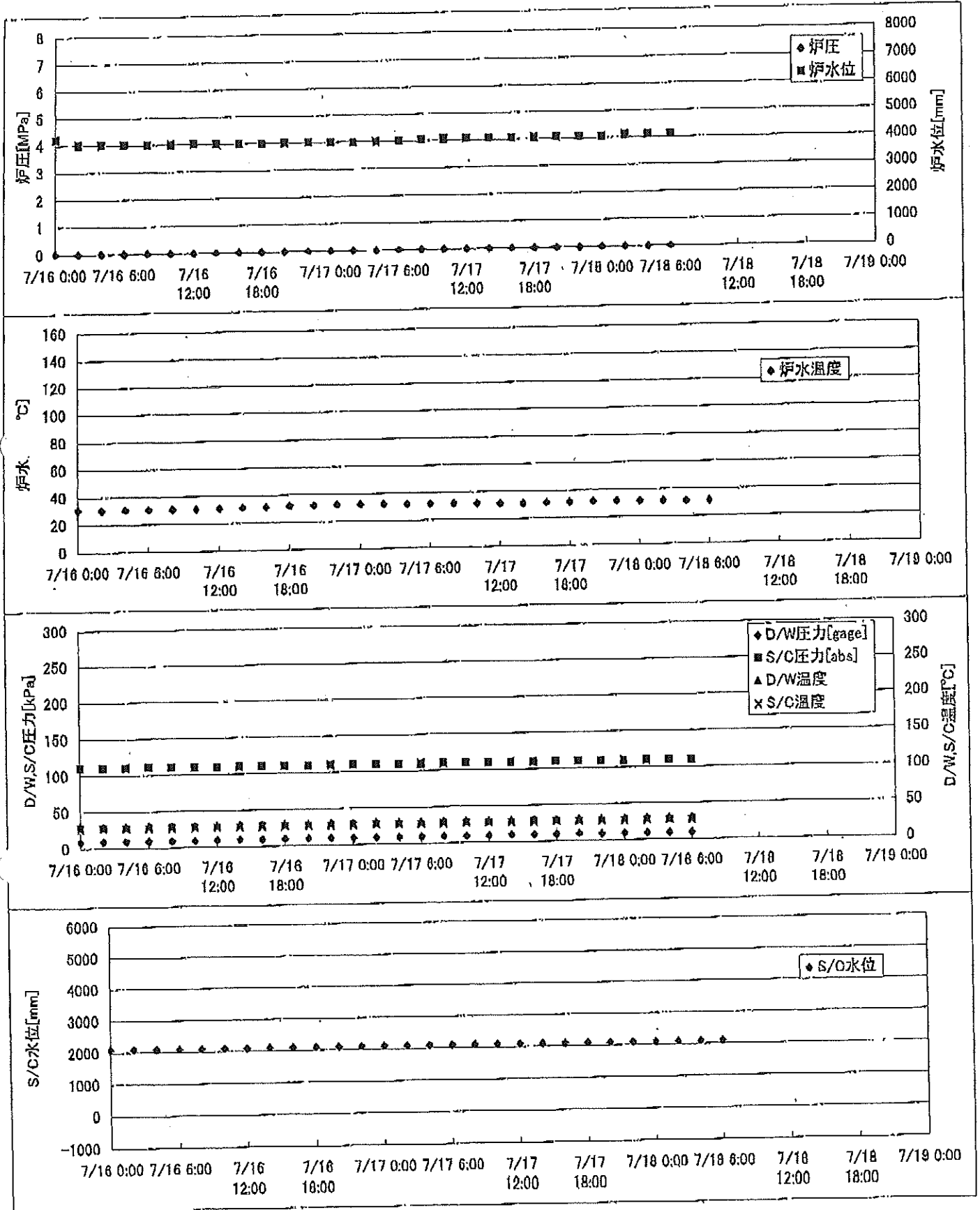
### 2F-1号機



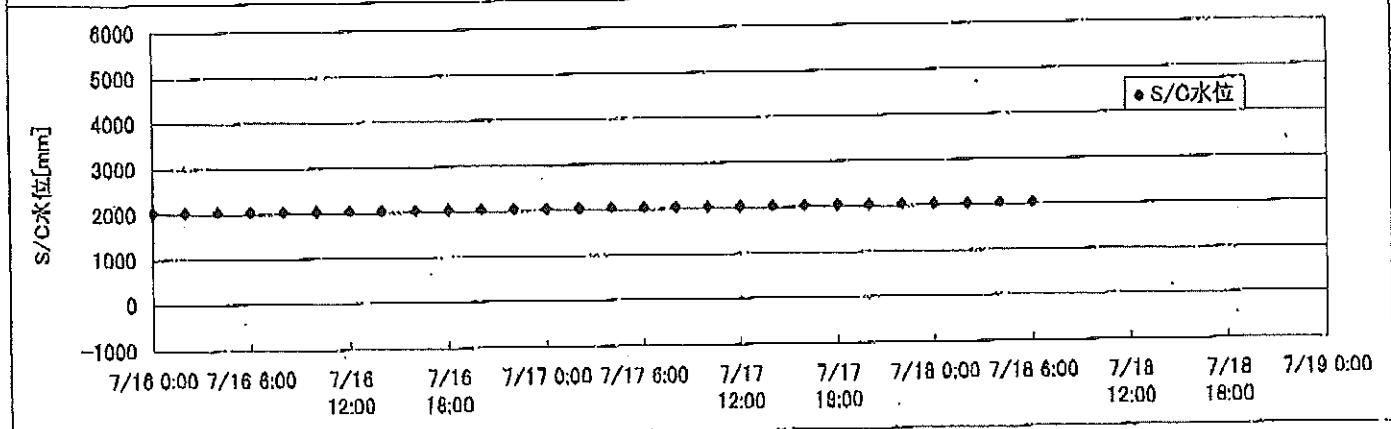
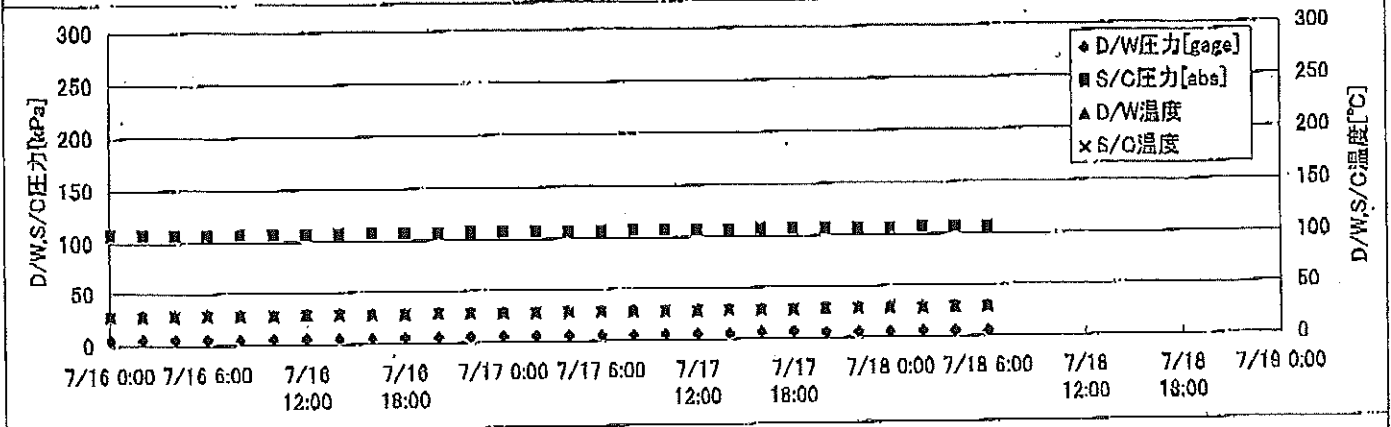
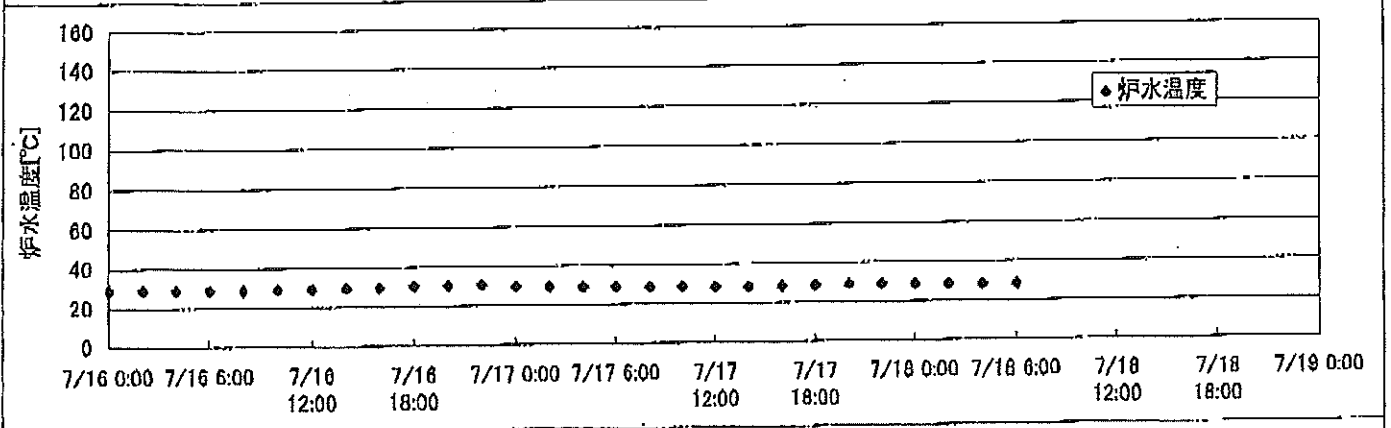
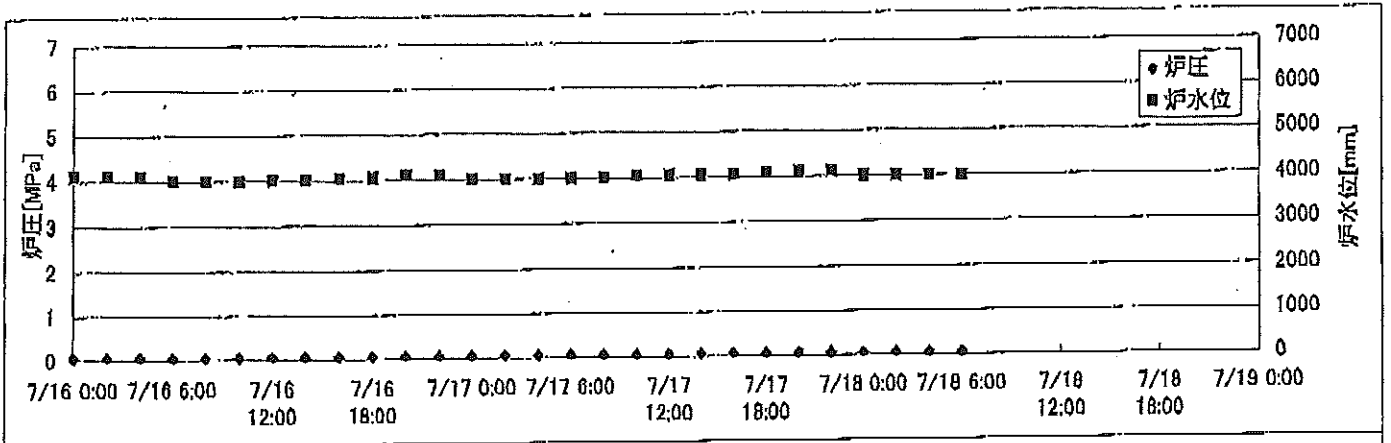
2F-2号機



2F-3号機



2F-4号機



# 2F-1号機

※燃料頂部(TAF)からの水位=炉水位+4200[mm]

| 時間              | 炉圧<br>[MPa<br>(gage)] | 炉水位<br>[mm]<br>停止時 | 炉水温度[°C] | D/W圧力<br>[kPa(gage)] | D/W温度<br>[°C] | S/C圧力<br>[kPa(abs)] | S/C水位<br>[mm] | S/C温度<br>[°C] |
|-----------------|-----------------------|--------------------|----------|----------------------|---------------|---------------------|---------------|---------------|
| 2011/7/16 0:00  | 0.05                  | 5600               | 25.1     | 3                    | 27.1          | 105                 | 1966          | 25            |
| 2011/7/16 2:00  | 0.05                  | 5600               | 25.2     | 3                    | 27.0          | 105                 | 1966          | 25            |
| 2011/7/16 4:00  | 0.06                  | 5600               | 25.2     | 3                    | 27.0          | 105                 | 1966          | 25            |
| 2011/7/16 6:00  | 0.06                  | 5600               | 25.3     | 3                    | 27.1          | 105                 | 1966          | 25            |
| 2011/7/16 8:00  | 0.06                  | 5600               | 25.3     | 3                    | 27.1          | 105                 | 1967          | 25            |
| 2011/7/16 10:00 | 0.06                  | 5600               | 25.4     | 3                    | 27.0          | 105                 | 1968          | 26            |
| 2011/7/16 12:00 | 0.06                  | 5600               | 25.5     | 3                    | 27.0          | 105                 | 1971          | 26            |
| 2011/7/16 14:00 | 0.06                  | 5600               | 25.5     | 3                    | 27.0          | 105                 | 1972          | 26            |
| 2011/7/16 16:00 | 0.06                  | 5600               | 25.8     | 4                    | 27.0          | 105                 | 1971          | 26            |
| 2011/7/16 18:00 | 0.06                  | 5600               | 25.9     | 4                    | 27.0          | 105                 | 1975          | 26            |
| 2011/7/16 20:00 | 0.06                  | 5600               | 26.5     | 4                    | 27.0          | 105                 | 1976          | 26            |
| 2011/7/16 22:00 | 0.06                  | 5600               | 25.6     | 4                    | 27.1          | 105                 | 1977          | 27            |
| 2011/7/17 0:00  | 0.06                  | 5600               | 26.8     | 4                    | 27.1          | 105                 | 1979          | 27            |
| 2011/7/17 2:00  | 0.06                  | 5600               | 26.9     | 4                    | 27.1          | 105                 | 1980          | 27            |
| 2011/7/17 4:00  | 0.06                  | 5600               | 27.0     | 4                    | 27.2          | 105                 | 1981          | 27            |
| 2011/7/17 6:00  | 0.06                  | 5600               | 27.0     | 4                    | 27.2          | 105                 | 1981          | 27            |
| 2011/7/17 8:00  | 0.06                  | 5600               | 27.0     | 4                    | 27.2          | 105                 | 1984          | 27            |
| 2011/7/17 10:00 | 0.01                  | 3000               | 26.9     | 4                    | 27.3          | 105                 | 2193          | 27            |
| 2011/7/17 12:00 | 0.01                  | 3000               | 32.2     | 4                    | 27.5          | 105                 | 2199          | 27            |
| 2011/7/17 14:00 | 0.01                  | 3000               | 37.3     | 5                    | 28.5          | 105                 | 2201          | 27            |
| 2011/7/17 16:00 | 0.01                  | 3000               | 30.3     | 5                    | 29.4          | 105                 | 2200          | 27            |
| 2011/7/17 18:00 | 0.01                  | 3000               | 27.9     | 5                    | 28.8          | 105                 | 2200          | 27            |
| 2011/7/17 20:00 | 0.01                  | 3000               | 27.3     | 5                    | 28.3          | 105                 | 2200          | 27            |
| 2011/7/17 22:00 | 0.01                  | 3000               | 27.0     | 5                    | 28.0          | 105                 | 2201          | 27            |
| 2011/7/18 0:00  | 0.01                  | 3000               | 26.7     | 5                    | 27.8          | 105                 | 2201          | 27            |
| 2011/7/18 2:00  | 0.01                  | 3000               | 26.5     | 5                    | 27.7          | 105                 | 2202          | 27            |
| 2011/7/18 4:00  | 0.01                  | 3000               | 26.5     | 5                    | 27.7          | 105                 | 2202          | 27            |
| 2011/7/18 6:00  | 0.01                  | 3000               | 26.6     | 5                    | 27.7          | 105                 | 2202          | 27            |
| 2011/7/18 8:00  |                       |                    |          |                      |               |                     |               |               |
| 2011/7/18 10:00 |                       |                    |          |                      |               |                     |               |               |
| 2011/7/18 12:00 |                       |                    |          |                      |               |                     |               |               |
| 2011/7/18 14:00 |                       |                    |          |                      |               |                     |               |               |
| 2011/7/18 16:00 |                       |                    |          |                      |               |                     |               |               |
| 2011/7/18 18:00 |                       |                    |          |                      |               |                     |               |               |
| 2011/7/18 20:00 |                       |                    |          |                      |               |                     |               |               |
| 2011/7/18 22:00 |                       |                    |          |                      |               |                     |               |               |
| 2011/7/19 0:00  |                       |                    |          |                      |               |                     |               |               |

14:13 RHRポンプ(B)起動

# 2F-2号機

※燃料頂部(TAF)からの水位=炉水位+4200[mm]

| 時間              | 炉圧<br>[MPa<br>(gage)] | 炉水位<br>[mm]<br>停止時 | 炉水温度[°C] | D/W圧力<br>[kPa(gage)] | D/W温度<br>[°C] | S/C圧力<br>[kPa(abs)] | S/C水位<br>[mm] | S/C温度<br>[°C] |
|-----------------|-----------------------|--------------------|----------|----------------------|---------------|---------------------|---------------|---------------|
| 2011/7/16 0:00  | 0.06                  | 5850               | 25.8     | 4                    | 26.9          | 105                 | 1200          | 25            |
| 2011/7/16 2:00  | 0.06                  | 5850               | 25.8     | 4                    | 26.9          | 105                 | 1200          | 25            |
| 2011/7/16 4:00  | 0.05                  | 5850               | 25.9     | 4                    | 26.8          | 105                 | 1200          | 25            |
| 2011/7/16 6:00  | 0.06                  | 5850               | 26.0     | 4                    | 26.8          | 105                 | 1200          | 25            |
| 2011/7/16 8:00  | 0.05                  | 5850               | 26.1     | 4                    | 26.8          | 105                 | 1200          | 26            |
| 2011/7/16 10:00 | 0.05                  | 5850               | 26.2     | 4                    | 27.0          | 105                 | 1200          | 26            |
| 2011/7/16 12:00 | 0.05                  | 5850               | 26.3     | 4                    | 27.0          | 105                 | 1200          | 26            |
| 2011/7/16 14:00 | 0.05                  | 5850               | 26.4     | 4                    | 27.0          | 105                 | 1200          | 26            |
| 2011/7/16 16:00 | 0.05                  | 5850               | 26.6     | 5                    | 27.0          | 105                 | 1200          | 27            |
| 2011/7/16 18:00 | 0.05                  | 5800               | 26.9     | 4                    | 27.0          | 105                 | 1200          | 27            |
| 2011/7/16 20:00 | 0.05                  | 5800               | 27.1     | 4                    | 27.0          | 105                 | 1200          | 27            |
| 2011/7/16 22:00 | 0.05                  | 5800               | 27.3     | 4                    | 27.0          | 105                 | 1050          | 27            |
| 2011/7/17 0:00  | 0.05                  | 5800               | 27.3     | 4                    | 27.0          | 104                 | 1050          | 27            |
| 2011/7/17 2:00  | 0.05                  | 5850               | 27.5     | 4                    | 27.0          | 105                 | 1050          | 27            |
| 2011/7/17 4:00  | 0.05                  | 5850               | 27.6     | 4                    | 27.0          | 105                 | 1050          | 27            |
| 2011/7/17 6:00  | 0.06                  | 5850               | 27.6     | 4                    | 27.0          | 105                 | 1050          | 27            |
| 2011/7/17 8:00  | 0.05                  | 5850               | 27.6     | 4                    | 27.0          | 105                 | 1050          | 28            |
| 2011/7/17 10:00 | 0.06                  | 5850               | 27.6     | 4                    | 27.1          | 105                 | 1050          | 28            |
| 2011/7/17 12:00 | 0.05                  | 5750               | 27.4     | 4                    | 27.1          | 104                 | 1050          | 28            |
| 2011/7/17 14:00 | 0.05                  | 5700               | 27.1     | 4                    | 27.1          | 105                 | 1050          | 27            |
| 2011/7/17 16:00 | 0.06                  | 5700               | 27.2     | 4                    | 27.1          | 105                 | 1050          | 28            |
| 2011/7/17 18:00 | 0.05                  | 5700               | 27.4     | 4                    | 27.1          | 105                 | 1050          | 27            |
| 2011/7/17 20:00 | 0.05                  | 5700               | 27.5     | 4                    | 27.1          | 105                 | 1050          | 28            |
| 2011/7/17 22:00 | 0.05                  | 5700               | 27.4     | 4                    | 27.1          | 105                 | 1050          | 28            |
| 2011/7/18 0:00  | 0.05                  | 5700               | 27.4     | 4                    | 27.3          | 105                 | 1050          | 28            |
| 2011/7/18 2:00  | 0.05                  | 5700               | 27.4     | 4                    | 27.3          | 105                 | 1050          | 28            |
| 2011/7/18 4:00  | 0.06                  | 5700               | 27.4     | 4                    | 27.1          | 105                 | 1050          | 28            |
| 2011/7/18 6:00  | 0.06                  | 5700               | 27.5     | 4                    | 27.3          | 105                 | 1050          | 28            |
| 2011/7/18 8:00  |                       |                    |          |                      |               |                     |               |               |
| 2011/7/18 10:00 |                       |                    |          |                      |               |                     |               |               |
| 2011/7/18 12:00 |                       |                    |          |                      |               |                     |               |               |
| 2011/7/18 14:00 |                       |                    |          |                      |               |                     |               |               |
| 2011/7/18 16:00 |                       |                    |          |                      |               |                     |               |               |
| 2011/7/18 18:00 |                       |                    |          |                      |               |                     |               |               |
| 2011/7/18 20:00 |                       |                    |          |                      |               |                     |               |               |
| 2011/7/18 22:00 |                       |                    |          |                      |               |                     |               |               |
| 2011/7/19 0:00  |                       |                    |          |                      |               |                     |               |               |

# 2F-3号機

※燃料頂部(TAF)からの水位=炉水位+4200[mm]

| 時間              | 炉圧<br>[MPa<br>(gage)] | 炉水位<br>[mm]<br>停止時 | 炉水温度[°C] | D/W圧力<br>[kPa(gage)] | D/W温度<br>[°C] | S/C圧力<br>[kPa(abs)] | S/C水位<br>[mm] | S/C温度<br>[°C] |
|-----------------|-----------------------|--------------------|----------|----------------------|---------------|---------------------|---------------|---------------|
| 2011/7/16 0:00  | 0.02                  | 4200               | 31.0     | 10                   | 29.8          | 110                 | 2100          | 27            |
| 2011/7/16 2:00  | 0.02                  | 4000               | 30.9     | 10                   | 29.8          | 110                 | 2100          | 27            |
| 2011/7/16 4:00  | 0.02                  | 4000               | 30.6     | 10                   | 29.9          | 110                 | 2100          | 27            |
| 2011/7/16 6:00  | 0.02                  | 4000               | 30.9     | 10                   | 29.9          | 110                 | 2100          | 27            |
| 2011/7/16 8:00  | 0.02                  | 4000               | 31.0     | 10                   | 29.9          | 110                 | 2100          | 27            |
| 2011/7/16 10:00 | 0.02                  | 4000               | 31.1     | 10                   | 29.9          | 110                 | 2100          | 27            |
| 2011/7/16 12:00 | 0.02                  | 4000               | 31.3     | 10                   | 29.9          | 110                 | 2100          | 27            |
| 2011/7/16 14:00 | 0.02                  | 4000               | 31.4     | 10                   | 29.9          | 110                 | 2100          | 27            |
| 2011/7/16 16:00 | 0.02                  | 4000               | 31.6     | 10                   | 29.9          | 110                 | 2100          | 27            |
| 2011/7/16 18:00 | 0.02                  | 4000               | 32.1     | 10                   | 30.0          | 110                 | 2100          | 27            |
| 2011/7/16 20:00 | 0.02                  | 4000               | 32.4     | 10                   | 30.0          | 110                 | 2100          | 27            |
| 2011/7/16 22:00 | 0.02                  | 4000               | 32.5     | 10                   | 30.0          | 110                 | 2100          | 27            |
| 2011/7/17 0:00  | 0.02                  | 4000               | 32.5     | 10                   | 30.1          | 110                 | 2100          | 27            |
| 2011/7/17 2:00  | 0.02                  | 4000               | 32.5     | 10                   | 30.1          | 110                 | 2100          | 27            |
| 2011/7/17 4:00  | 0.02                  | 4000               | 32.3     | 10                   | 30.1          | 110                 | 2100          | 27            |
| 2011/7/17 6:00  | 0.02                  | 4000               | 32.2     | 10                   | 30.2          | 110                 | 2100          | 27            |
| 2011/7/17 8:00  | 0.02                  | 4050               | 32.0     | 10                   | 30.3          | 110                 | 2100          | 27            |
| 2011/7/17 10:00 | 0.02                  | 4050               | 31.8     | 10                   | 30.2          | 110                 | 2100          | 27            |
| 2011/7/17 12:00 | 0.02                  | 4050               | 31.5     | 10                   | 30.1          | 110                 | 2100          | 27            |
| 2011/7/17 14:00 | 0.02                  | 4050               | 31.3     | 10                   | 30.1          | 110                 | 2100          | 27            |
| 2011/7/17 16:00 | 0.02                  | 4050               | 31.6     | 10                   | 30.1          | 110                 | 2100          | 27            |
| 2011/7/17 18:00 | 0.02                  | 4050               | 31.8     | 10                   | 30.0          | 110                 | 2100          | 27            |
| 2011/7/17 20:00 | 0.02                  | 4050               | 32.1     | 10                   | 30.1          | 110                 | 2100          | 27            |
| 2011/7/17 22:00 | 0.02                  | 4050               | 32.1     | 10                   | 30.1          | 110                 | 2100          | 27            |
| 2011/7/18 0:00  | 0.02                  | 4050               | 31.9     | 10                   | 30.1          | 110                 | 2100          | 27            |
| 2011/7/18 2:00  | 0.02                  | 4100               | 31.6     | 10                   | 30.1          | 110                 | 2100          | 27            |
| 2011/7/18 4:00  | 0.02                  | 4100               | 31.4     | 10                   | 30.1          | 110                 | 2100          | 27            |
| 2011/7/18 6:00  | 0.02                  | 4100               | 31.5     | 10                   | 30.1          | 110                 | 2100          | 27            |
| 2011/7/18 8:00  |                       |                    |          |                      |               |                     |               |               |
| 2011/7/18 10:00 |                       |                    |          |                      |               |                     |               |               |
| 2011/7/18 12:00 |                       |                    |          |                      |               |                     |               |               |
| 2011/7/18 14:00 |                       |                    |          |                      |               |                     |               |               |
| 2011/7/18 16:00 |                       |                    |          |                      |               |                     |               |               |
| 2011/7/18 18:00 |                       |                    |          |                      |               |                     |               |               |
| 2011/7/18 20:00 |                       |                    |          |                      |               |                     |               |               |
| 2011/7/18 22:00 |                       |                    |          |                      |               |                     |               |               |
| 2011/7/19 0:00  |                       |                    |          |                      |               |                     |               |               |

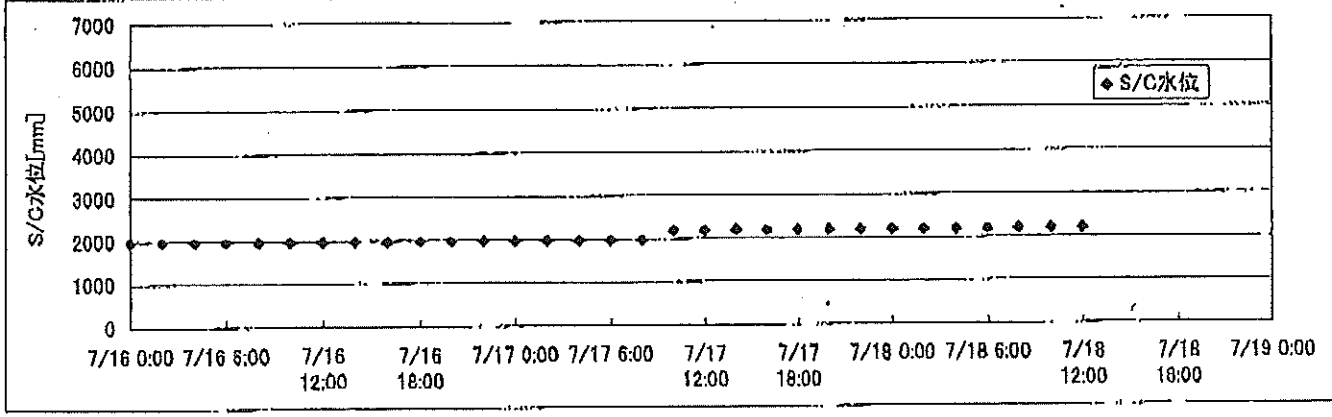
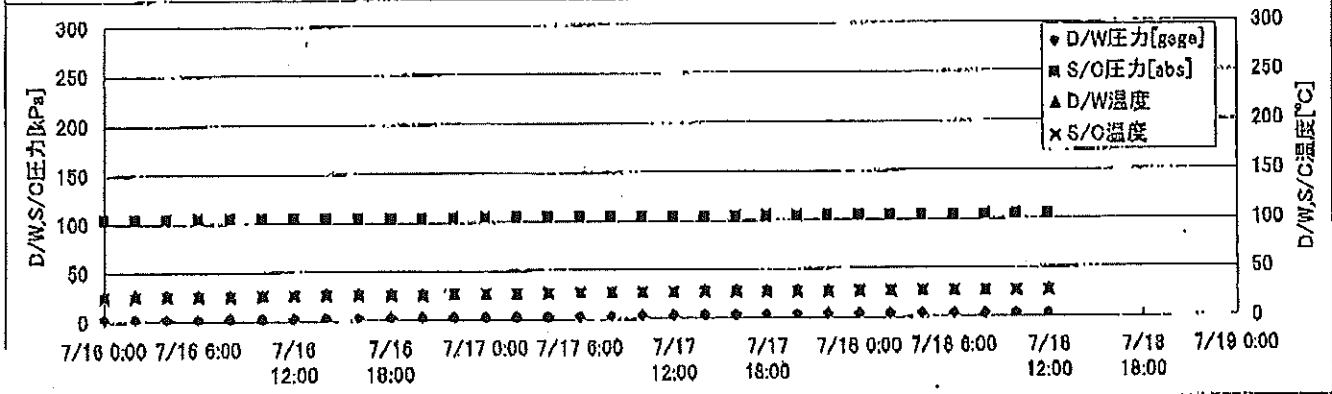
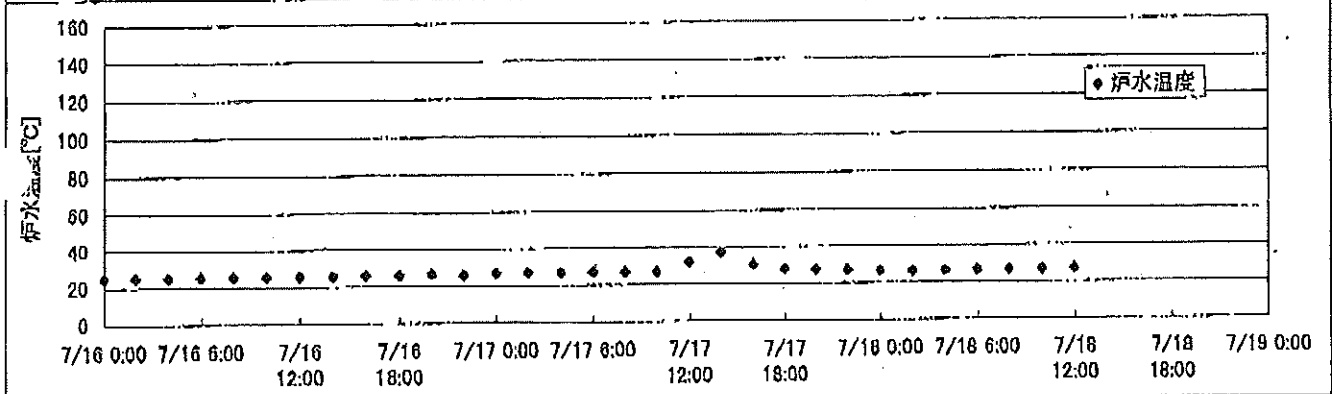
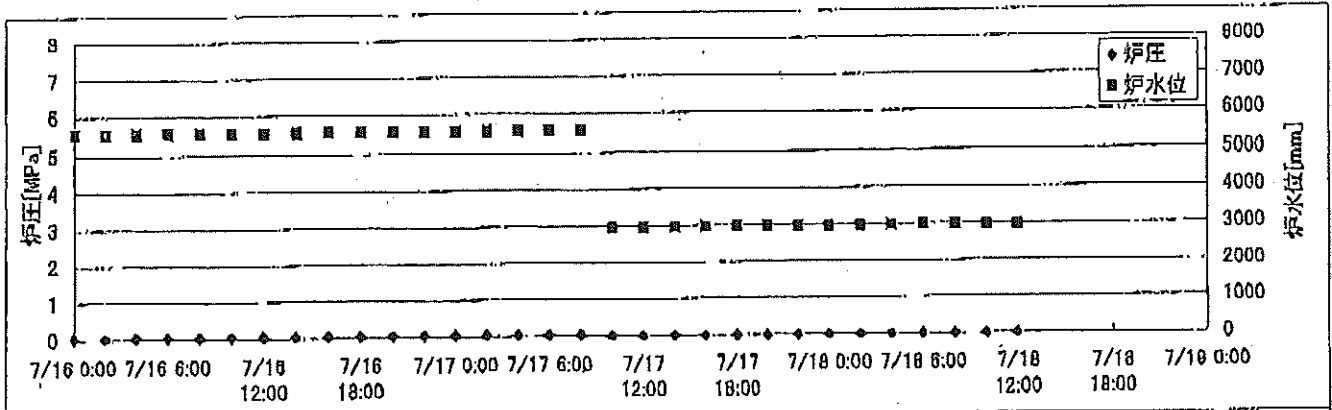
# 2F-4号機

※燃料頂部(TAF)からの水位=炉水位+4200[mm]

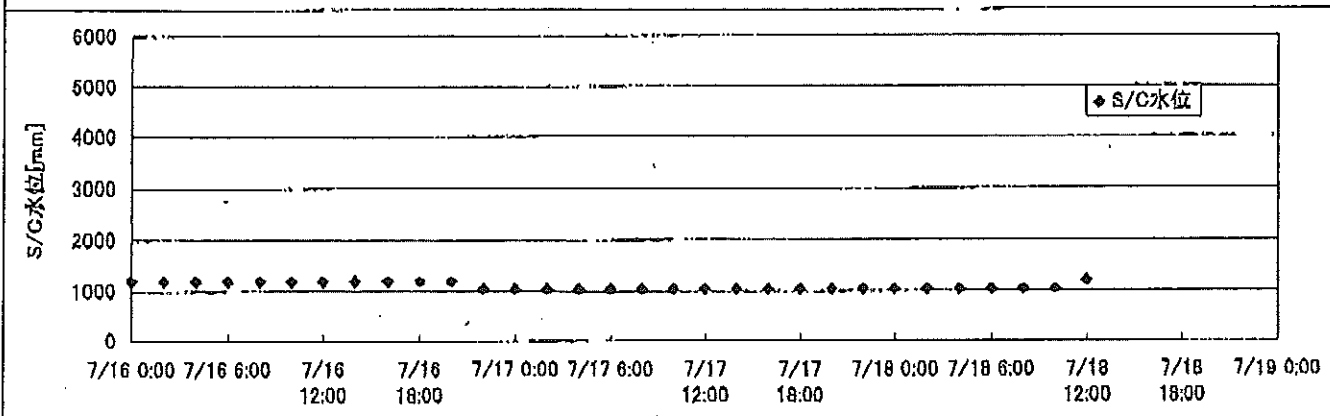
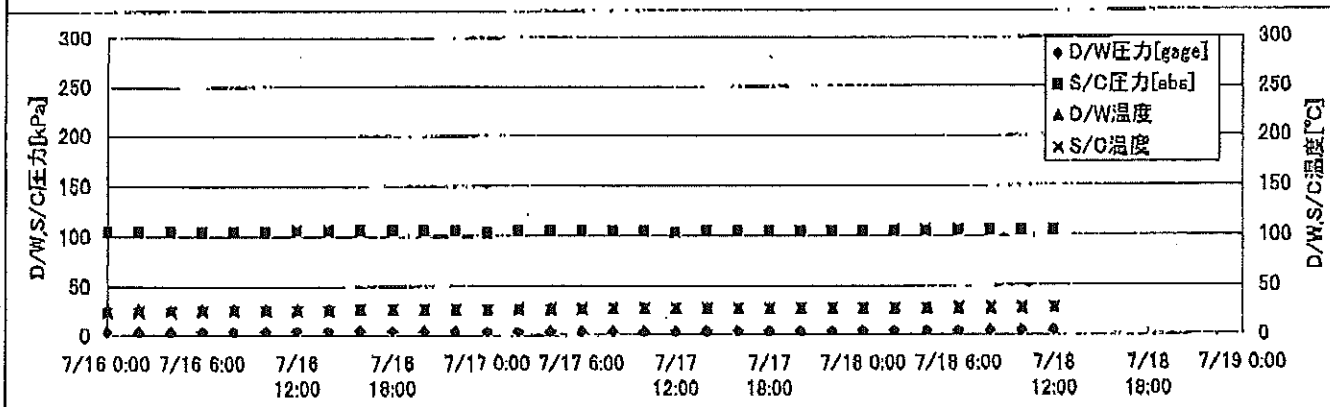
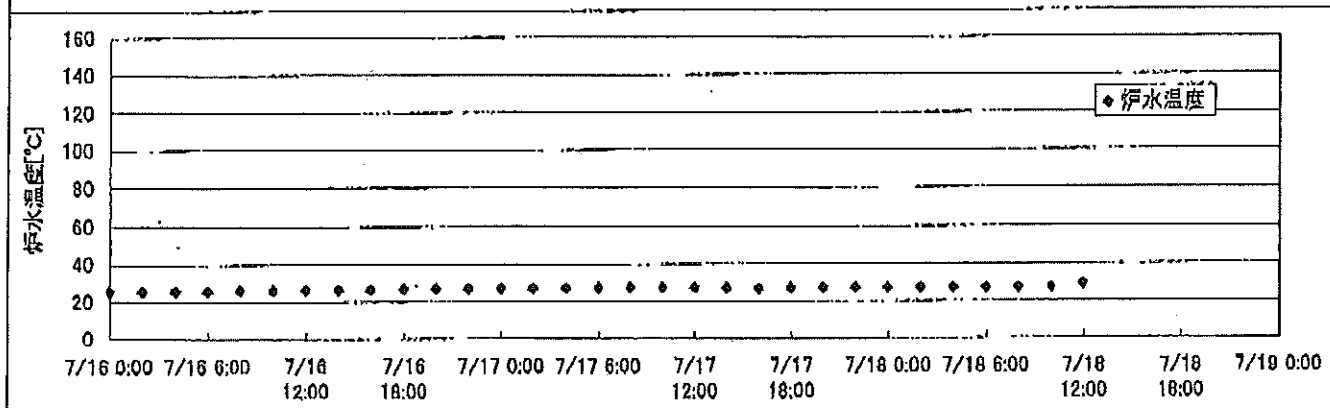
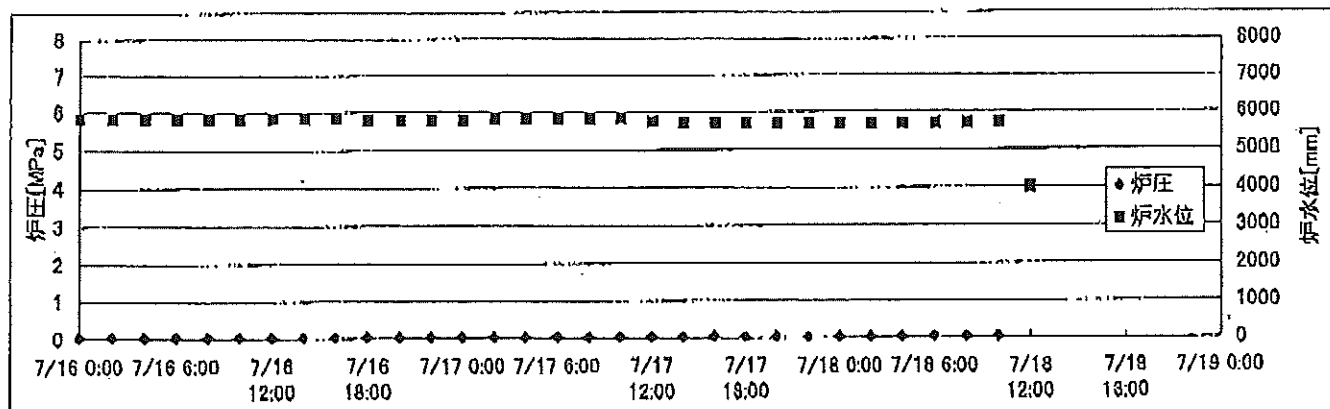
| 時間              | 炉圧<br>[MPa<br>(gage)] | 炉水位<br>[mm]<br>停止時 | 炉水温度[°C] | D/W圧力<br>[kPa(gage)] | D/W温度<br>[°C] | S/C圧力<br>[kPa(abs)] | S/C水位<br>[mm] | S/C温度<br>[°C] |
|-----------------|-----------------------|--------------------|----------|----------------------|---------------|---------------------|---------------|---------------|
| 2011/7/16 0:00  | 0.07                  | 4100               | 29.2     | 6                    | 29.4          | 107                 | 2050          | 28            |
| 2011/7/16 2:00  | 0.07                  | 4100               | 29.2     | 6                    | 29.4          | 107                 | 2050          | 28            |
| 2011/7/16 4:00  | 0.07                  | 4100               | 29.1     | 6                    | 29.4          | 107                 | 2050          | 28            |
| 2011/7/16 6:00  | 0.06                  | 4000               | 29.2     | 6                    | 29.3          | 107                 | 2050          | 28            |
| 2011/7/16 8:00  | 0.06                  | 4000               | 29.3     | 6                    | 29.3          | 107                 | 2050          | 28            |
| 2011/7/16 10:00 | 0.07                  | 4000               | 29.4     | 6                    | 29.3          | 107                 | 2050          | 28            |
| 2011/7/16 12:00 | 0.07                  | 4000               | 29.6     | 6                    | 29.3          | 107                 | 2050          | 28            |
| 2011/7/16 14:00 | 0.07                  | 4000               | 29.8     | 6                    | 29.4          | 107                 | 2050          | 28            |
| 2011/7/16 16:00 | 0.07                  | 4050               | 30.1     | 6                    | 29.2          | 107                 | 2050          | 28            |
| 2011/7/16 18:00 | 0.07                  | 4050               | 30.5     | 6                    | 29.5          | 107                 | 2050          | 28            |
| 2011/7/16 20:00 | 0.07                  | 4100               | 30.9     | 6                    | 29.5          | 107                 | 2050          | 28            |
| 2011/7/16 22:00 | 0.07                  | 4100               | 31.1     | 6                    | 29.7          | 107                 | 2050          | 28            |
| 2011/7/17 0:00  | 0.07                  | 4000               | 30.1     | 6                    | 29.4          | 107                 | 2050          | 28            |
| 2011/7/17 2:00  | 0.07                  | 4000               | 29.7     | 6                    | 29.5          | 107                 | 2050          | 28            |
| 2011/7/17 4:00  | 0.07                  | 4000               | 29.4     | 6                    | 29.5          | 107                 | 2050          | 28            |
| 2011/7/17 6:00  | 0.07                  | 4000               | 29.3     | 6                    | 29.3          | 107                 | 2050          | 28            |
| 2011/7/17 8:00  | 0.07                  | 4000               | 29.1     | 6                    | 29.6          | 107                 | 2050          | 28            |
| 2011/7/17 10:00 | 0.07                  | 4050               | 29.0     | 6                    | 29.4          | 107                 | 2050          | 28            |
| 2011/7/17 12:00 | 0.07                  | 4050               | 28.8     | 6                    | 29.4          | 107                 | 2050          | 28            |
| 2011/7/17 14:00 | 0.07                  | 4050               | 28.6     | 6                    | 29.4          | 107                 | 2050          | 28            |
| 2011/7/17 16:00 | 0.08                  | 4050               | 28.7     | 7                    | 29.5          | 107                 | 2050          | 28            |
| 2011/7/17 18:00 | 0.08                  | 4100               | 29.0     | 7                    | 29.4          | 107                 | 2050          | 28            |
| 2011/7/17 20:00 | 0.08                  | 4100               | 29.2     | 6                    | 29.4          | 107                 | 2050          | 28            |
| 2011/7/17 22:00 | 0.08                  | 4100               | 29.3     | 6                    | 29.4          | 107                 | 2050          | 28            |
| 2011/7/18 0:00  | 0.07                  | 4000               | 29.1     | 6                    | 29.5          | 107                 | 2050          | 28            |
| 2011/7/18 2:00  | 0.07                  | 4000               | 28.9     | 6                    | 29.5          | 107                 | 2050          | 28            |
| 2011/7/18 4:00  | 0.07                  | 4000               | 28.7     | 6                    | 29.3          | 107                 | 2050          | 28            |
| 2011/7/18 6:00  | 0.07                  | 4000               | 28.7     | 6                    | 29.5          | 107                 | 2050          | 28            |
| 2011/7/18 8:00  |                       |                    |          |                      |               |                     |               |               |
| 2011/7/18 10:00 |                       |                    |          |                      |               |                     |               |               |
| 2011/7/18 12:00 |                       |                    |          |                      |               |                     |               |               |
| 2011/7/18 14:00 |                       |                    |          |                      |               |                     |               |               |
| 2011/7/18 16:00 |                       |                    |          |                      |               |                     |               |               |
| 2011/7/18 18:00 |                       |                    |          |                      |               |                     |               |               |
| 2011/7/18 20:00 |                       |                    |          |                      |               |                     |               |               |
| 2011/7/18 22:00 |                       |                    |          |                      |               |                     |               |               |
| 2011/7/19 0:00  |                       |                    |          |                      |               |                     |               |               |



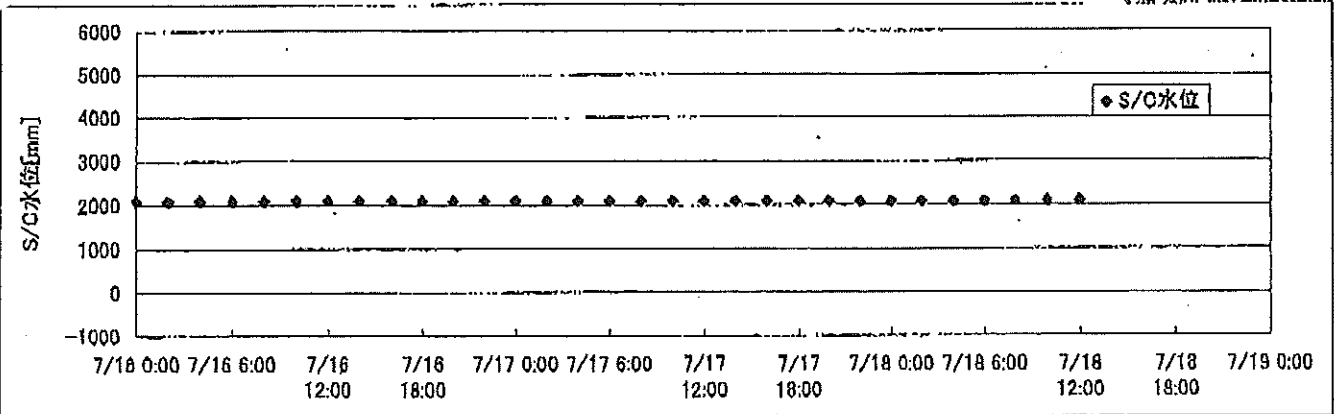
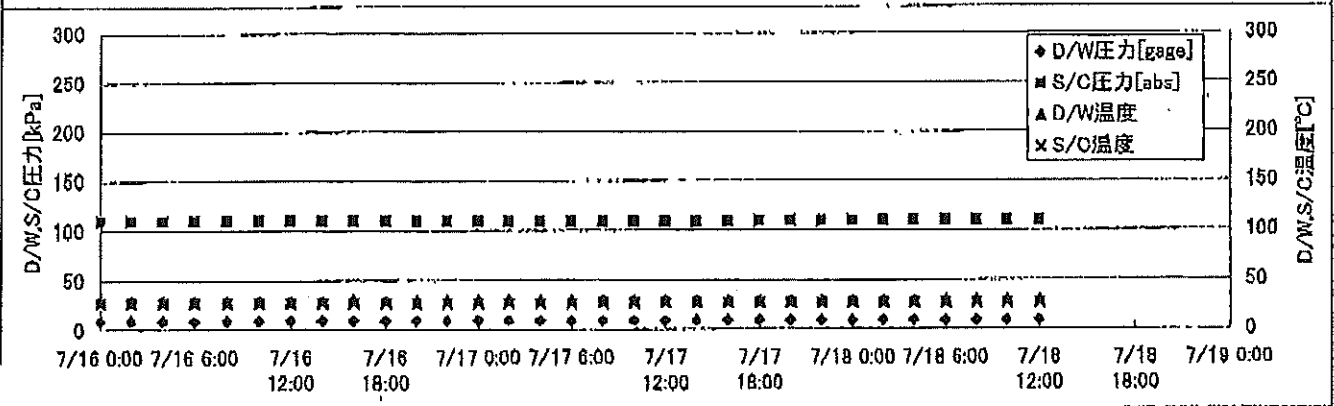
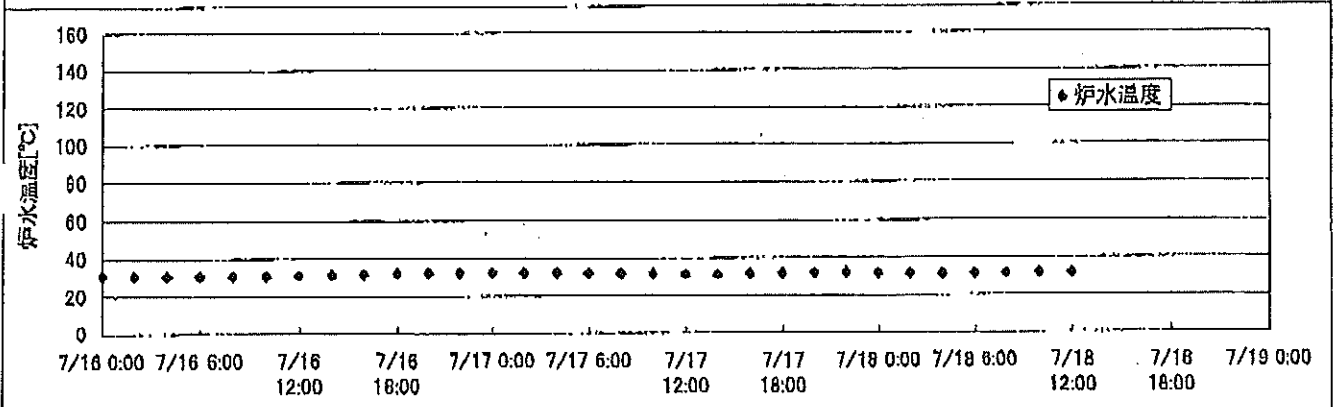
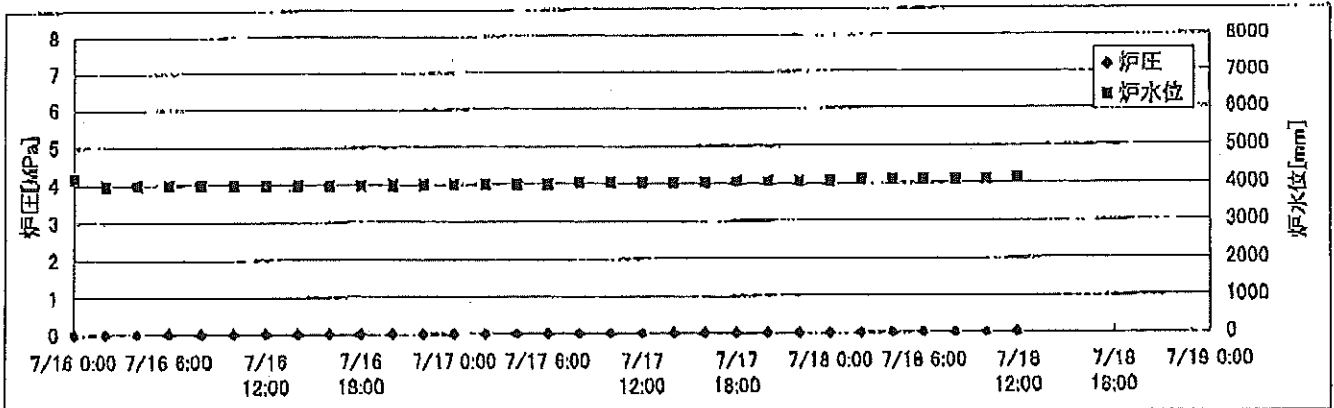
2F-1号機



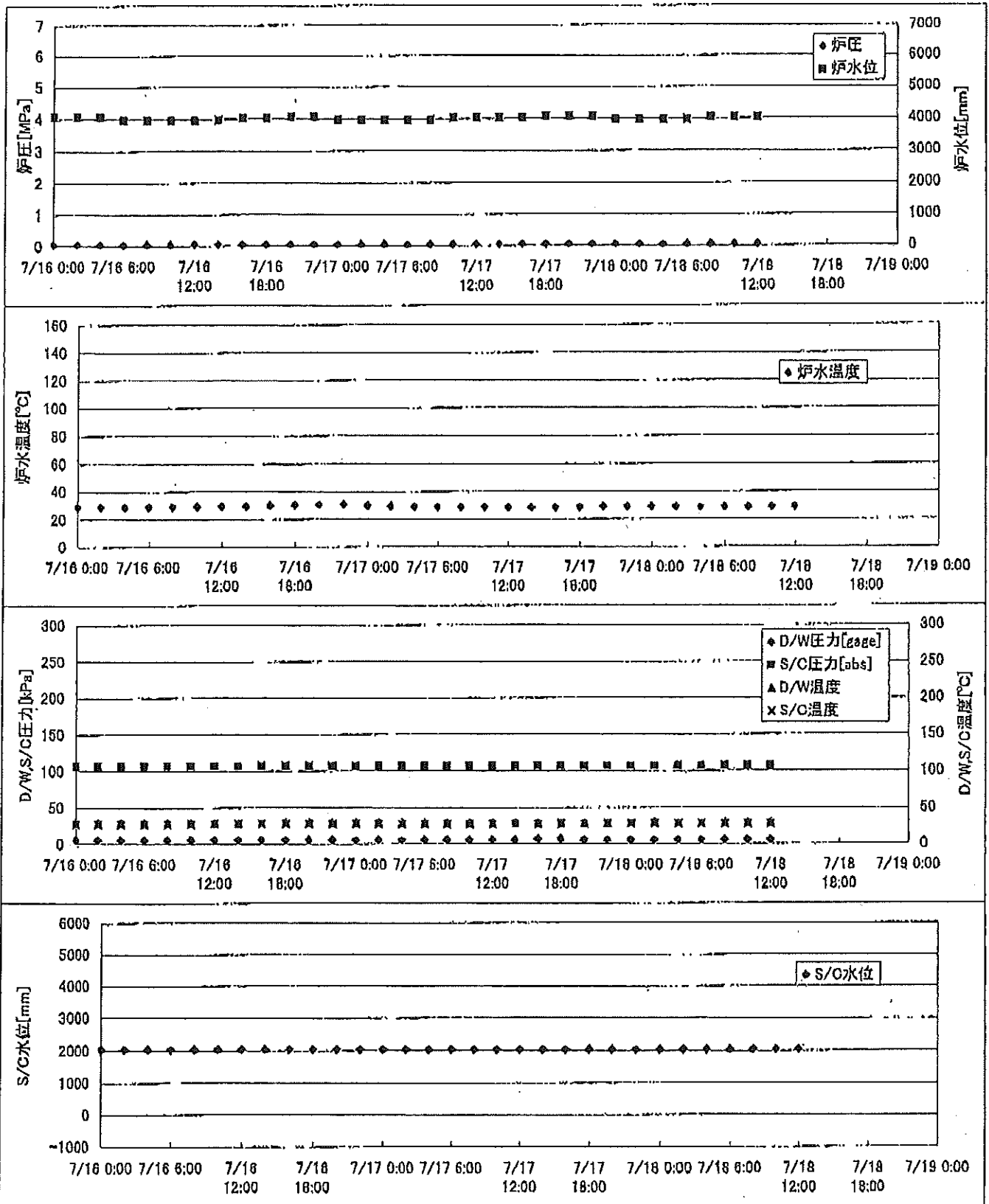
2F-2号機



2F-3号機



2F-4号機





## 2F-2号機

※燃料頂部(TAF)からの水位=炉水位+4200[mm]

| 時間              | 炉圧<br>[MPa<br>(gage)] | 炉水位<br>[mm]<br>停止時 | 炉水温度[°C] | D/W圧力<br>[kPa(gage)] | D/W温度<br>[°C] | S/C圧力<br>[kPa(abs)] | S/C水位<br>[mm] | S/C温度<br>[°C] |
|-----------------|-----------------------|--------------------|----------|----------------------|---------------|---------------------|---------------|---------------|
| 2011/7/16 0:00  | 0.06                  | 5850               | 25.8     | 4                    | 26.9          | 105                 | 1200          | 25            |
| 2011/7/16 2:00  | 0.06                  | 5850               | 25.8     | 4                    | 26.9          | 105                 | 1200          | 25            |
| 2011/7/16 4:00  | 0.05                  | 5850               | 25.9     | 4                    | 26.8          | 105                 | 1200          | 25            |
| 2011/7/16 6:00  | 0.06                  | 5850               | 26.0     | 4                    | 26.8          | 105                 | 1200          | 25            |
| 2011/7/16 8:00  | 0.05                  | 5850               | 26.1     | 4                    | 26.8          | 105                 | 1200          | 26            |
| 2011/7/16 10:00 | 0.05                  | 5850               | 26.2     | 4                    | 27.0          | 105                 | 1200          | 26            |
| 2011/7/16 12:00 | 0.05                  | 5850               | 26.3     | 4                    | 27.0          | 105                 | 1200          | 26            |
| 2011/7/16 14:00 | 0.05                  | 5850               | 26.4     | 4                    | 27.0          | 105                 | 1200          | 26            |
| 2011/7/16 16:00 | 0.05                  | 5850               | 26.6     | 5                    | 27.0          | 105                 | 1200          | 27            |
| 2011/7/16 18:00 | 0.05                  | 5800               | 26.9     | 4                    | 27.0          | 105                 | 1200          | 27            |
| 2011/7/16 20:00 | 0.05                  | 5800               | 27.1     | 4                    | 27.0          | 105                 | 1200          | 27            |
| 2011/7/16 22:00 | 0.05                  | 5800               | 27.3     | 4                    | 27.0          | 105                 | 1050          | 27            |
| 2011/7/17 0:00  | 0.05                  | 5800               | 27.3     | 4                    | 27.0          | 104                 | 1050          | 27            |
| 2011/7/17 2:00  | 0.05                  | 5850               | 27.5     | 4                    | 27.0          | 105                 | 1050          | 27            |
| 2011/7/17 4:00  | 0.05                  | 5850               | 27.6     | 4                    | 27.0          | 105                 | 1050          | 27            |
| 2011/7/17 6:00  | 0.06                  | 5850               | 27.6     | 4                    | 27.0          | 105                 | 1050          | 27            |
| 2011/7/17 8:00  | 0.05                  | 5850               | 27.6     | 4                    | 27.0          | 105                 | 1050          | 28            |
| 2011/7/17 10:00 | 0.06                  | 5850               | 27.6     | 4                    | 27.1          | 105                 | 1050          | 28            |
| 2011/7/17 12:00 | 0.05                  | 5750               | 27.4     | 4                    | 27.1          | 104                 | 1050          | 28            |
| 2011/7/17 14:00 | 0.05                  | 5700               | 27.1     | 4                    | 27.1          | 105                 | 1050          | 27            |
| 2011/7/17 16:00 | 0.06                  | 5700               | 27.2     | 4                    | 27.1          | 105                 | 1050          | 28            |
| 2011/7/17 18:00 | 0.05                  | 5700               | 27.4     | 4                    | 27.1          | 105                 | 1050          | 27            |
| 2011/7/17 20:00 | 0.05                  | 5700               | 27.5     | 4                    | 27.1          | 105                 | 1050          | 28            |
| 2011/7/17 22:00 | 0.05                  | 5700               | 27.4     | 4                    | 27.1          | 105                 | 1050          | 28            |
| 2011/7/18 0:00  | 0.05                  | 5700               | 27.4     | 4                    | 27.3          | 105                 | 1050          | 28            |
| 2011/7/18 2:00  | 0.05                  | 5700               | 27.4     | 4                    | 27.3          | 105                 | 1050          | 28            |
| 2011/7/18 4:00  | 0.06                  | 5700               | 27.4     | 4                    | 27.1          | 105                 | 1050          | 28            |
| 2011/7/18 6:00  | 0.06                  | 5700               | 27.5     | 4                    | 27.3          | 105                 | 1050          | 28            |
| 2011/7/18 8:00  | 0.05                  | 5700               | 27.5     | 4                    | 27.3          | 105                 | 1050          | 28            |
| 2011/7/18 10:00 | 0.06                  | 5700               | 27.5     | 4                    | 27.4          | 105                 | 1050          | 28            |
| 2011/7/18 12:00 | -0.01                 | 4000               | 29.3     | 5                    | 27.4          | 105                 | 1200          | 28            |
| 2011/7/18 14:00 |                       |                    |          |                      |               |                     |               |               |
| 2011/7/18 16:00 |                       |                    |          |                      |               |                     |               |               |
| 2011/7/18 18:00 |                       |                    |          |                      |               |                     |               |               |
| 2011/7/18 20:00 |                       |                    |          |                      |               |                     |               |               |
| 2011/7/18 22:00 |                       |                    |          |                      |               |                     |               |               |
| 2011/7/19 0:00  |                       |                    |          |                      |               |                     |               |               |

・7/18 RHRポンプ(B)の運転モードをLPCモードからSHCモードに切り替えのため  
 10:39 RHRポンプ(B)停止  
 13:00 RHRポンプ(B)再起動予定

## 2F-3号機

※燃料頂部(TAF)からの水位=炉水位+4200[mm]

| 時間              | 炉圧<br>[MPa<br>(gage)] | 炉水位<br>[mm]<br>停止時 | 炉水温度[°C] | D/W圧力<br>[kPa(gage)] | D/W温度<br>[°C] | S/C圧力<br>[kPa(abs)] | S/C水位<br>[mm] | S/C温度<br>[°C] |
|-----------------|-----------------------|--------------------|----------|----------------------|---------------|---------------------|---------------|---------------|
| 2011/7/16 0:00  | 0.02                  | 4200               | 31.0     | 10                   | 29.8          | 110                 | 2100          | 27            |
| 2011/7/16 2:00  | 0.02                  | 4000               | 30.9     | 10                   | 29.8          | 110                 | 2100          | 27            |
| 2011/7/16 4:00  | 0.02                  | 4000               | 30.8     | 10                   | 29.9          | 110                 | 2100          | 27            |
| 2011/7/16 6:00  | 0.02                  | 4000               | 30.9     | 10                   | 29.9          | 110                 | 2100          | 27            |
| 2011/7/16 8:00  | 0.02                  | 4000               | 31.0     | 10                   | 29.9          | 110                 | 2100          | 27            |
| 2011/7/16 10:00 | 0.02                  | 4000               | 31.1     | 10                   | 29.9          | 110                 | 2100          | 27            |
| 2011/7/16 12:00 | 0.02                  | 4000               | 31.3     | 10                   | 29.9          | 110                 | 2100          | 27            |
| 2011/7/16 14:00 | 0.02                  | 4000               | 31.4     | 10                   | 29.9          | 110                 | 2100          | 27            |
| 2011/7/16 16:00 | 0.02                  | 4000               | 31.6     | 10                   | 29.9          | 110                 | 2100          | 27            |
| 2011/7/16 18:00 | 0.02                  | 4000               | 32.1     | 10                   | 30.0          | 110                 | 2100          | 27            |
| 2011/7/16 20:00 | 0.02                  | 4000               | 32.4     | 10                   | 30.0          | 110                 | 2100          | 27            |
| 2011/7/16 22:00 | 0.02                  | 4000               | 32.5     | 10                   | 30.0          | 110                 | 2100          | 27            |
| 2011/7/17 0:00  | 0.02                  | 4000               | 32.5     | 10                   | 30.1          | 110                 | 2100          | 27            |
| 2011/7/17 2:00  | 0.02                  | 4000               | 32.5     | 10                   | 30.1          | 110                 | 2100          | 27            |
| 2011/7/17 4:00  | 0.02                  | 4000               | 32.3     | 10                   | 30.1          | 110                 | 2100          | 27            |
| 2011/7/17 6:00  | 0.02                  | 4000               | 32.2     | 10                   | 30.2          | 110                 | 2100          | 27            |
| 2011/7/17 8:00  | 0.02                  | 4050               | 32.0     | 10                   | 30.3          | 110                 | 2100          | 27            |
| 2011/7/17 10:00 | 0.02                  | 4050               | 31.8     | 10                   | 30.2          | 110                 | 2100          | 27            |
| 2011/7/17 12:00 | 0.02                  | 4050               | 31.5     | 10                   | 30.1          | 110                 | 2100          | 27            |
| 2011/7/17 14:00 | 0.02                  | 4050               | 31.3     | 10                   | 30.1          | 110                 | 2100          | 27            |
| 2011/7/17 16:00 | 0.02                  | 4050               | 31.6     | 10                   | 30.1          | 110                 | 2100          | 27            |
| 2011/7/17 18:00 | 0.02                  | 4050               | 31.8     | 10                   | 30.0          | 110                 | 2100          | 27            |
| 2011/7/17 20:00 | 0.02                  | 4050               | 32.1     | 10                   | 30.1          | 110                 | 2100          | 27            |
| 2011/7/17 22:00 | 0.02                  | 4050               | 32.1     | 10                   | 30.1          | 110                 | 2100          | 27            |
| 2011/7/18 0:00  | 0.02                  | 4050               | 31.9     | 10                   | 30.1          | 110                 | 2100          | 27            |
| 2011/7/18 2:00  | 0.02                  | 4100               | 31.6     | 10                   | 30.1          | 110                 | 2100          | 27            |
| 2011/7/18 4:00  | 0.02                  | 4100               | 31.4     | 10                   | 30.1          | 110                 | 2100          | 27            |
| 2011/7/18 6:00  | 0.02                  | 4100               | 31.5     | 10                   | 30.1          | 110                 | 2100          | 27            |
| 2011/7/18 8:00  | 0.02                  | 4100               | 31.6     | 10                   | 30.1          | 110                 | 2100          | 27            |
| 2011/7/18 10:00 | 0.02                  | 4100               | 31.7     | 10                   | 30.1          | 110                 | 2100          | 27            |
| 2011/7/18 12:00 | 0.02                  | 4150               | 31.7     | 10                   | 30.1          | 110                 | 2100          | 27            |
| 2011/7/18 14:00 |                       |                    |          |                      |               |                     |               |               |
| 2011/7/18 16:00 |                       |                    |          |                      |               |                     |               |               |
| 2011/7/18 18:00 |                       |                    |          |                      |               |                     |               |               |
| 2011/7/18 20:00 |                       |                    |          |                      |               |                     |               |               |
| 2011/7/18 22:00 |                       |                    |          |                      |               |                     |               |               |
| 2011/7/19 0:00  |                       |                    |          |                      |               |                     |               |               |

