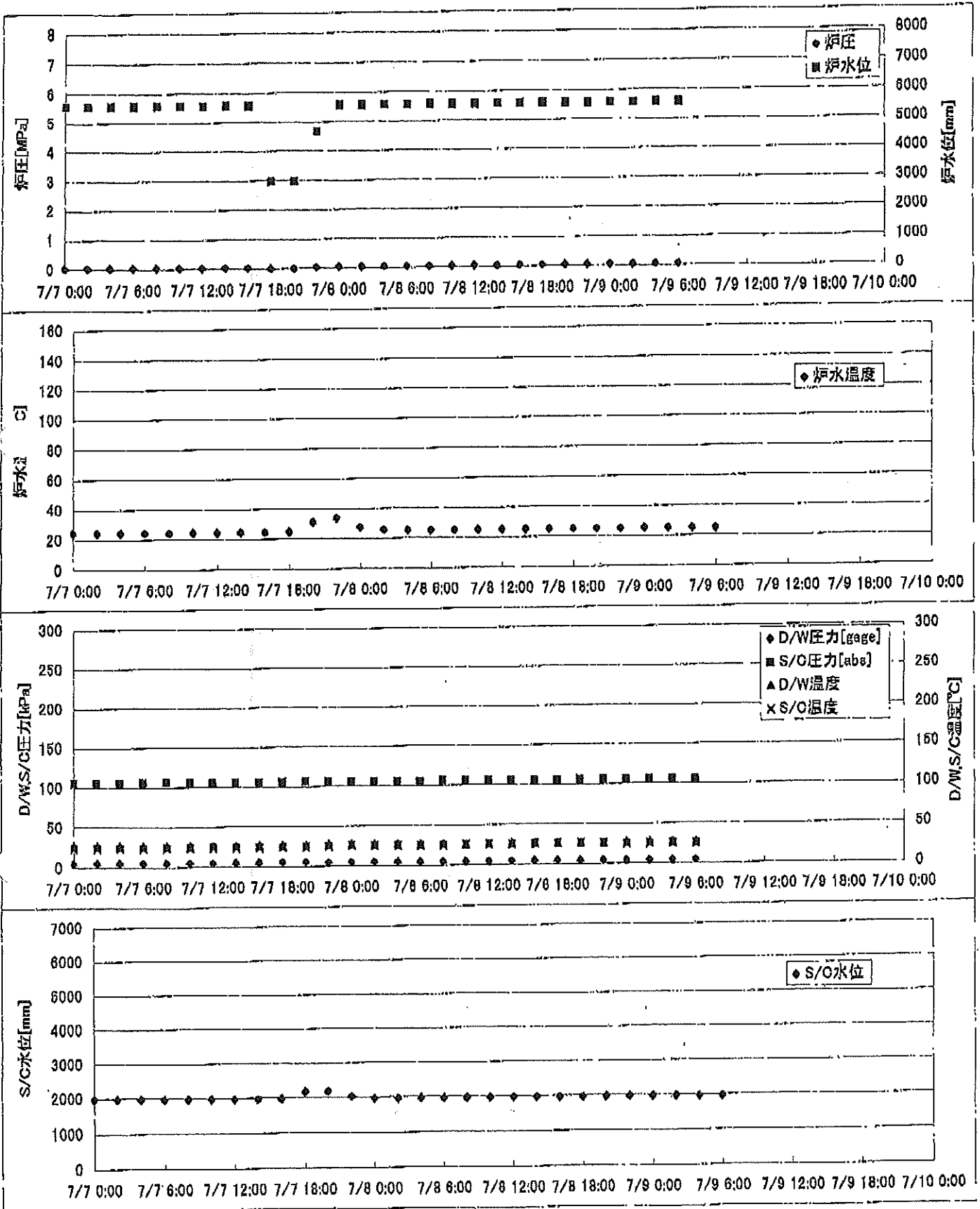
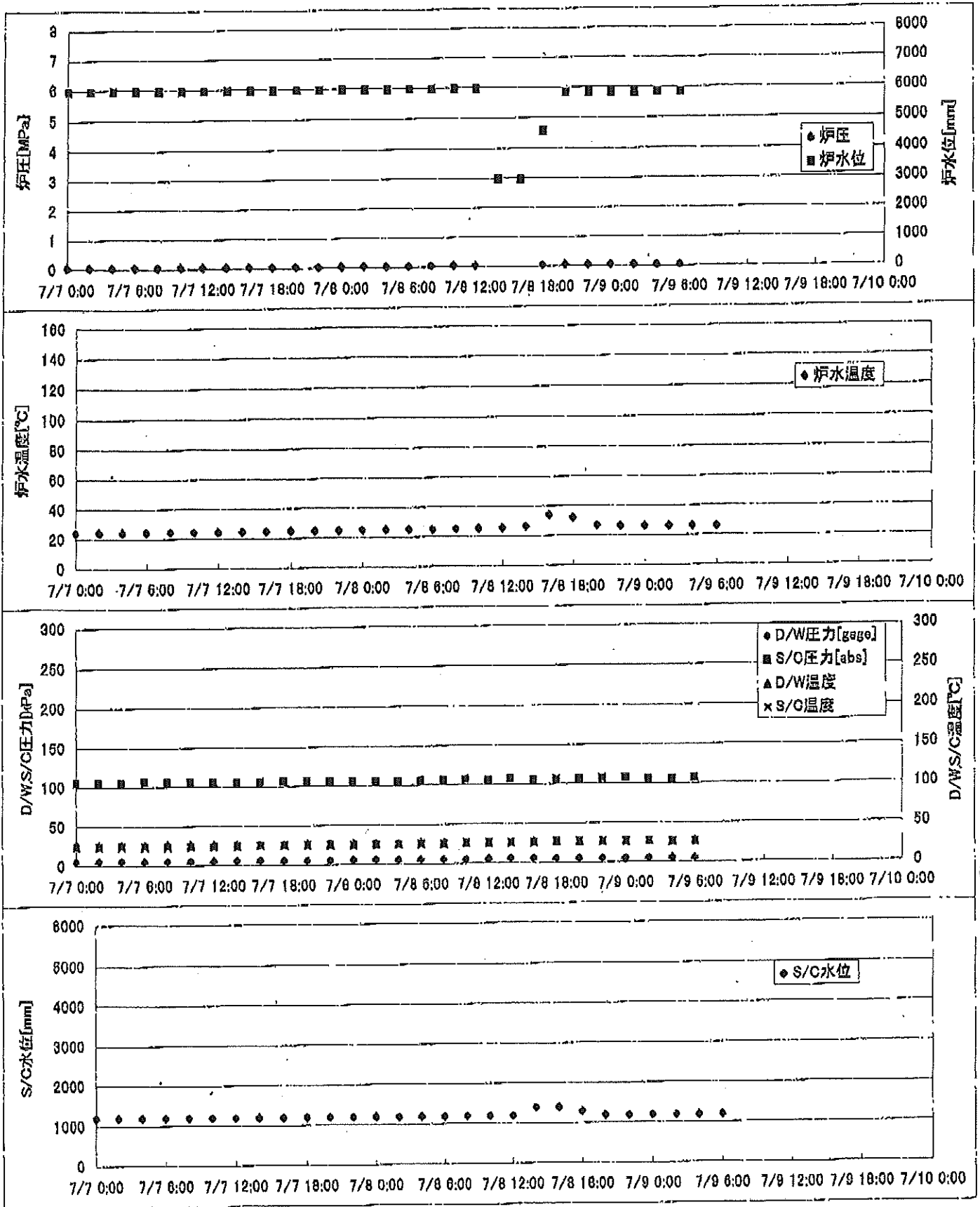


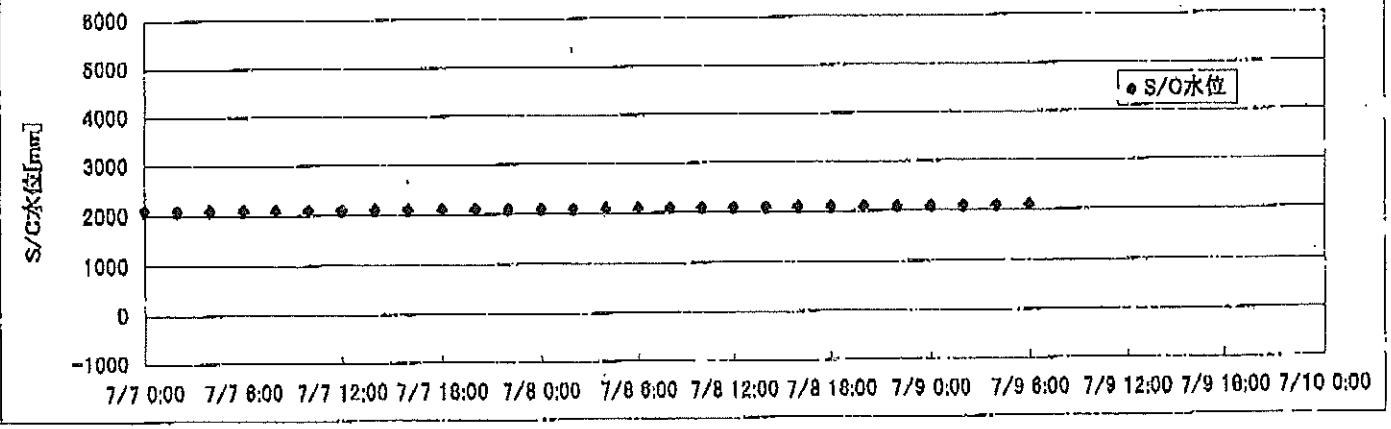
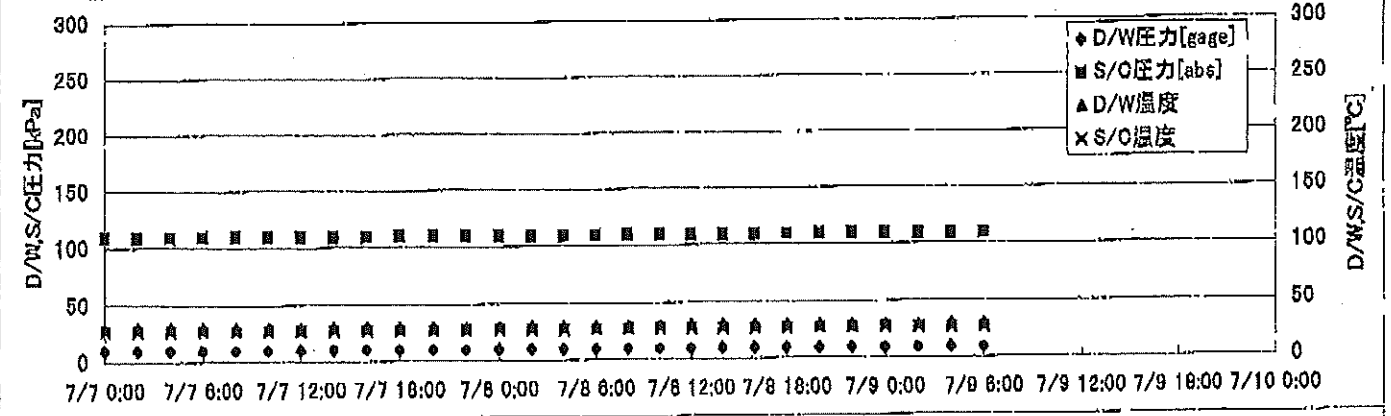
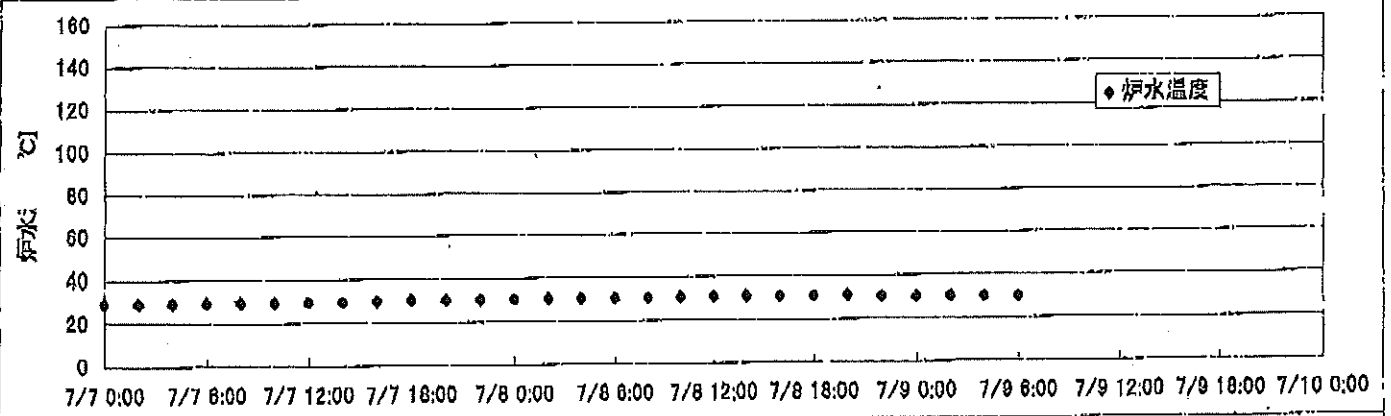
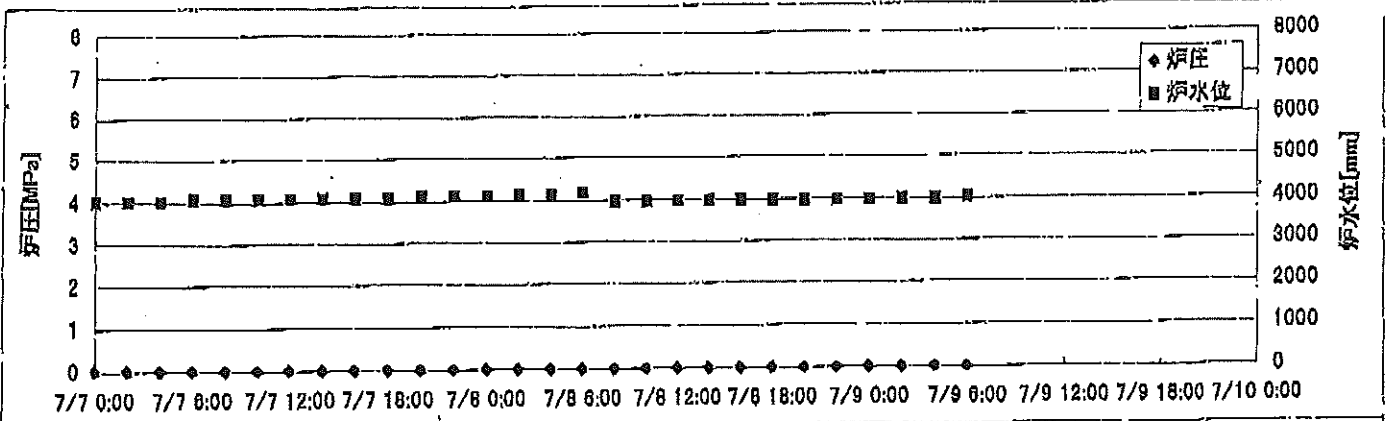
2F-1号機



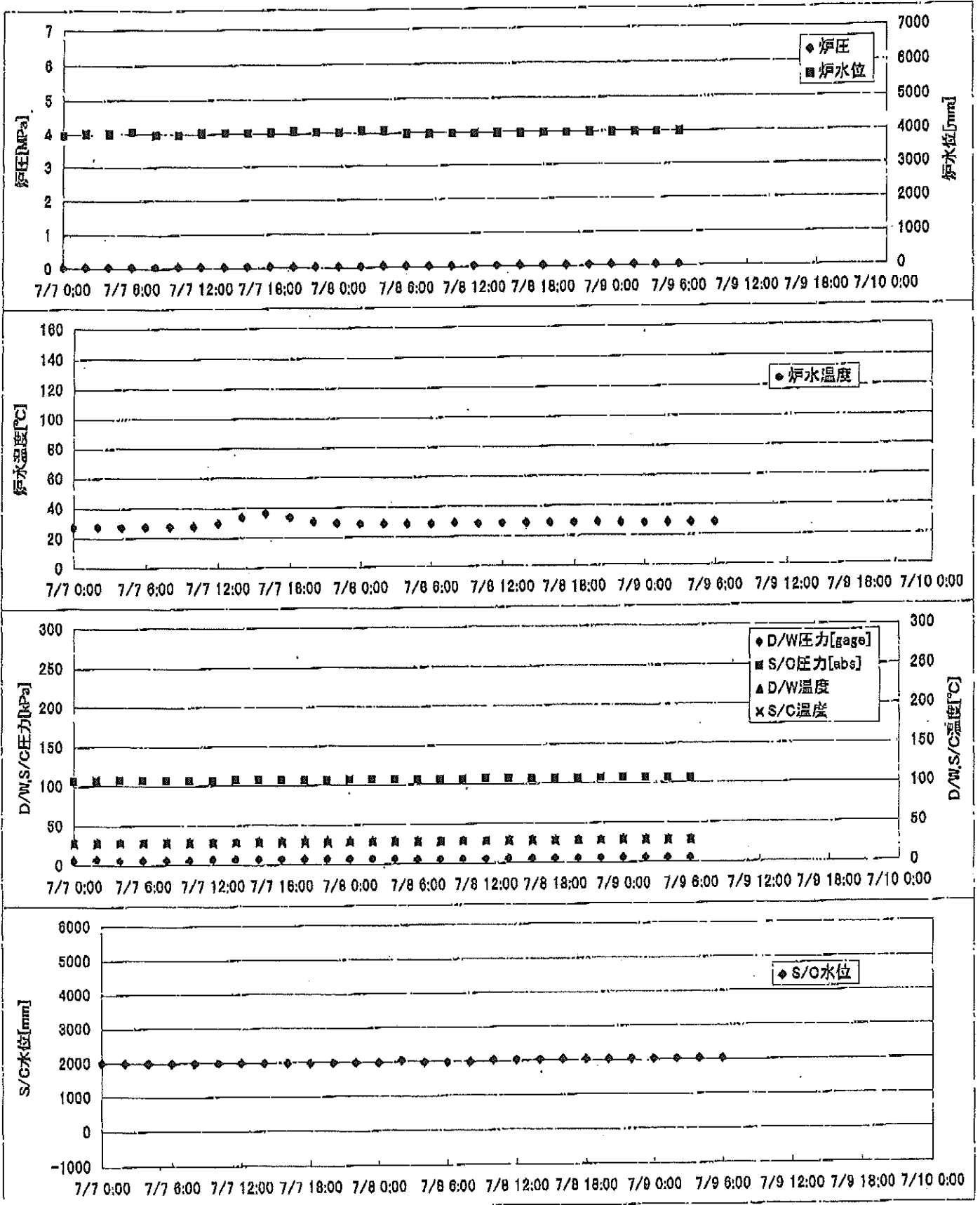
2F-2号機



2F-3号機



2F-4号機



2F-1号機

※燃料頂部(TAF)からの水位=炉水位+4200[mm]

| 時間 | 炉圧 [MPa (gage)] | 炉水位 [mm] 停止時 | 炉水温度[°C] | D/W圧力 [kPa(gage)] | D/W温度 [°C] | S/C圧力 [kPa(abs)] | S/C水位 [mm] | S/C温度 [°C] |
|----------------|-----------------------|--------------------|----------|----------------------|---------------|---------------------|---------------|---------------|
| 2011/7/7 0:00 | 0.04 | 5600 | 24.5 | 5 | 26.6 | 106 | 1970 | 24 |
| 2011/7/7 2:00 | 0.04 | 5600 | 24.3 | 5 | 26.6 | 106 | 1970 | 24 |
| 2011/7/7 4:00 | 0.04 | 5600 | 24.3 | 5 | 26.5 | 106 | 1970 | 24 |
| 2011/7/7 6:00 | 0.04 | 5600 | 24.2 | 5 | 26.6 | 106 | 1970 | 24 |
| 2011/7/7 8:00 | 0.04 | 5600 | 24.2 | 5 | 26.6 | 106 | 1970 | 24 |
| 2011/7/7 10:00 | 0.04 | 5600 | 24.3 | 5 | 26.6 | 106 | 1969 | 24 |
| 2011/7/7 12:00 | 0.04 | 5600 | 24.3 | 5 | 26.6 | 106 | 1970 | 24 |
| 2011/7/7 14:00 | 0.04 | 5600 | 24.4 | 5 | 26.4 | 106 | 1970 | 24 |
| 2011/7/7 16:00 | 0.04 | 5600 | 24.4 | 5 | 26.4 | 106 | 1969 | 24 |
| 2011/7/7 18:00 | 0.00 | 3000 | 24.5 | 6 | 26.5 | 106 | 2169 | 24 |
| 2011/7/7 20:00 | 0.01 | 3000 | 31.2 | 6 | 26.5 | 106 | 2178 | 24 |
| 2011/7/7 22:00 | 0.05 | 4700 | 33.7 | 5 | 27.3 | 106 | 2028 | 24 |
| 2011/7/8 0:00 | 0.06 | 5600 | 27.4 | 5 | 27.1 | 106 | 1965 | 25 |
| 2011/7/8 2:00 | 0.06 | 5600 | 25.6 | 5 | 26.7 | 106 | 1965 | 25 |
| 2011/7/8 4:00 | 0.06 | 5600 | 25.4 | 5 | 26.8 | 106 | 1965 | 25 |
| 2011/7/8 6:00 | 0.06 | 5600 | 25.3 | 5 | 26.8 | 106 | 1965 | 25 |
| 2011/7/8 8:00 | 0.06 | 5600 | 25.3 | 5 | 26.8 | 106 | 1965 | 25 |
| 2011/7/8 10:00 | 0.06 | 5600 | 25.3 | 5 | 26.7 | 106 | 1965 | 26 |
| 2011/7/8 12:00 | 0.06 | 5600 | 25.3 | 5 | 26.7 | 106 | 1967 | 26 |
| 2011/7/8 14:00 | 0.06 | 5600 | 25.3 | 5 | 26.8 | 106 | 1966 | 26 |
| 2011/7/8 16:00 | 0.06 | 5600 | 25.3 | 5 | 26.6 | 106 | 1966 | 26 |
| 2011/7/8 18:00 | 0.06 | 5600 | 25.3 | 5 | 26.7 | 106 | 1967 | 26 |
| 2011/7/8 20:00 | 0.06 | 5600 | 25.3 | 5 | 26.8 | 106 | 1967 | 26 |
| 2011/7/8 22:00 | 0.06 | 5600 | 25.3 | 5 | 26.8 | 106 | 1967 | 26 |
| 2011/7/9 0:00 | 0.06 | 5600 | 25.2 | 5 | 26.8 | 106 | 1966 | 25 |
| 2011/7/9 2:00 | 0.06 | 5600 | 25.2 | 5 | 26.8 | 106 | 1966 | 25 |
| 2011/7/9 4:00 | 0.06 | 5600 | 25.2 | 4 | 26.8 | 106 | 1966 | 25 |
| 2011/7/9 6:00 | 0.06 | 5600 | 25.1 | 4 | 26.8 | 106 | 1964 | 25 |
| 2011/7/9 8:00 | | | | | | | | |
| 2011/7/9 10:00 | | | | | | | | |
| 2011/7/9 12:00 | | | | | | | | |
| 2011/7/9 14:00 | | | | | | | | |
| 2011/7/9 16:00 | | | | | | | | |
| 2011/7/9 18:00 | | | | | | | | |
| 2011/7/9 20:00 | | | | | | | | |
| 2011/7/9 22:00 | | | | | | | | |
| 2011/7/10 0:00 | | | | | | | | |

2F-2号機

※燃料頂部(TAF)からの水位=炉水位+4200[mm]

| 時間 | 炉圧 [MPa (gage)] | 炉水位 [mm] 停止時 | 炉水温度[°C] | D/W圧力 [kPa(gage)] | D/W温度 [°C] | S/C圧力 [kPa(abs)] | S/C水位 [mm] | S/C温度 [°C] |
|----------------|-----------------------|--------------------|----------|----------------------|---------------|---------------------|---------------|---------------|
| 2011/7/7 0:00 | 0.06 | 6000 | 24.2 | 6 | 26.4 | 106 | 1200 | 24 |
| 2011/7/7 2:00 | 0.06 | 6000 | 24.3 | 6 | 26.4 | 106 | 1200 | 24 |
| 2011/7/7 4:00 | 0.06 | 6000 | 24.4 | 6 | 26.3 | 106 | 1200 | 24 |
| 2011/7/7 6:00 | 0.06 | 6000 | 24.5 | 6 | 26.3 | 106 | 1200 | 24 |
| 2011/7/7 8:00 | 0.06 | 6000 | 24.6 | 6 | 26.5 | 106 | 1200 | 24 |
| 2011/7/7 10:00 | 0.06 | 6000 | 24.6 | 6 | 26.3 | 106 | 1200 | 24 |
| 2011/7/7 12:00 | 0.06 | 6000 | 24.7 | 6 | 26.3 | 106 | 1200 | 24 |
| 2011/7/7 14:00 | 0.06 | 6000 | 24.8 | 6 | 26.4 | 106 | 1200 | 24 |
| 2011/7/7 16:00 | 0.05 | 6000 | 24.9 | 6 | 26.4 | 106 | 1200 | 25 |
| 2011/7/7 18:00 | 0.05 | 6000 | 25.0 | 6 | 26.4 | 106 | 1200 | 25 |
| 2011/7/7 20:00 | 0.06 | 6000 | 25.1 | 6 | 26.5 | 106 | 1200 | 25 |
| 2011/7/7 22:00 | 0.05 | 6000 | 25.2 | 6 | 26.5 | 106 | 1200 | 25 |
| 2011/7/8 0:00 | 0.05 | 6000 | 25.4 | 6 | 26.5 | 106 | 1200 | 25 |
| 2011/7/8 2:00 | 0.06 | 6000 | 25.4 | 6 | 26.4 | 106 | 1200 | 25 |
| 2011/7/8 4:00 | 0.05 | 6000 | 25.5 | 6 | 26.5 | 106 | 1200 | 25 |
| 2011/7/8 6:00 | 0.06 | 6000 | 25.6 | 6 | 26.5 | 106 | 1200 | 25 |
| 2011/7/8 8:00 | 0.06 | 6000 | 25.6 | 6 | 26.5 | 106 | 1200 | 25 |
| 2011/7/8 10:00 | 0.06 | 6000 | 25.7 | 6 | 26.5 | 107 | 1200 | 26 |
| 2011/7/8 12:00 | 0.06 | 6000 | 25.8 | 6 | 26.5 | 106 | 1200 | 26 |
| 2011/7/8 14:00 | -0.01 | 3000 | 26.9 | 6 | 26.5 | 107 | 1400 | 26 |
| 2011/7/8 16:00 | -0.01 | 3000 | 34.6 | 6 | 26.9 | 106 | 1400 | 26 |
| 2011/7/8 18:00 | 0.06 | 4600 | 32.4 | 6 | 27.6 | 106 | 1300 | 27 |
| 2011/7/8 20:00 | 0.07 | 5850 | 27.4 | 6 | 27.3 | 106 | 1200 | 27 |
| 2011/7/8 22:00 | 0.07 | 5850 | 26.8 | 6 | 27.1 | 107 | 1200 | 27 |
| 2011/7/9 0:00 | 0.07 | 5850 | 26.6 | 6 | 26.8 | 107 | 1200 | 27 |
| 2011/7/9 2:00 | 0.07 | 5850 | 26.6 | 6 | 26.8 | 106 | 1200 | 27 |
| 2011/7/9 4:00 | 0.06 | 5850 | 26.5 | 6 | 26.7 | 106 | 1200 | 26 |
| 2011/7/9 6:00 | 0.06 | 5850 | 26.4 | 5 | 26.8 | 107 | 1200 | 26 |
| 2011/7/9 8:00 | | | | | | | | |
| 2011/7/9 10:00 | | | | | | | | |
| 2011/7/9 12:00 | | | | | | | | |
| 2011/7/9 14:00 | | | | | | | | |
| 2011/7/9 16:00 | | | | | | | | |
| 2011/7/9 18:00 | | | | | | | | |
| 2011/7/9 20:00 | | | | | | | | |
| 2011/7/9 22:00 | | | | | | | | |
| 2011/7/10 0:00 | | | | | | | | |

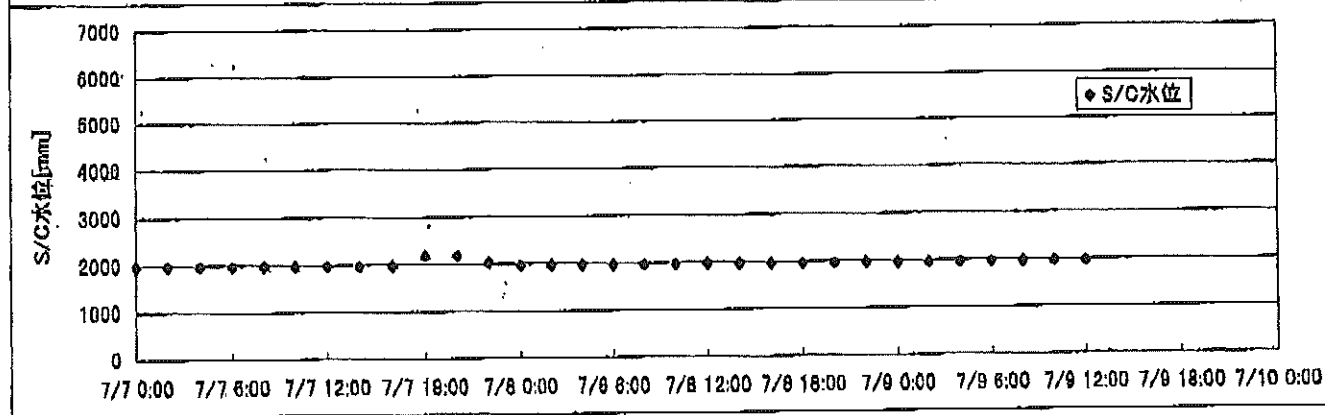
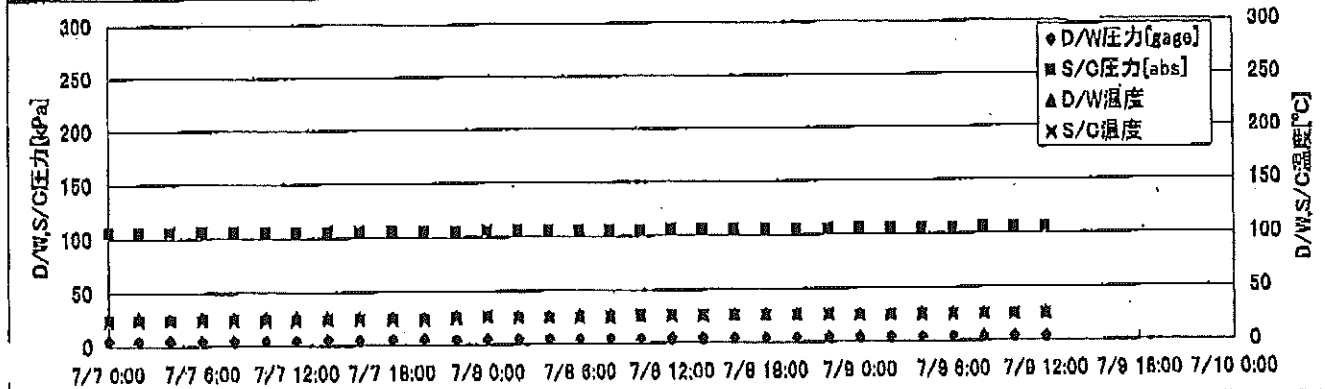
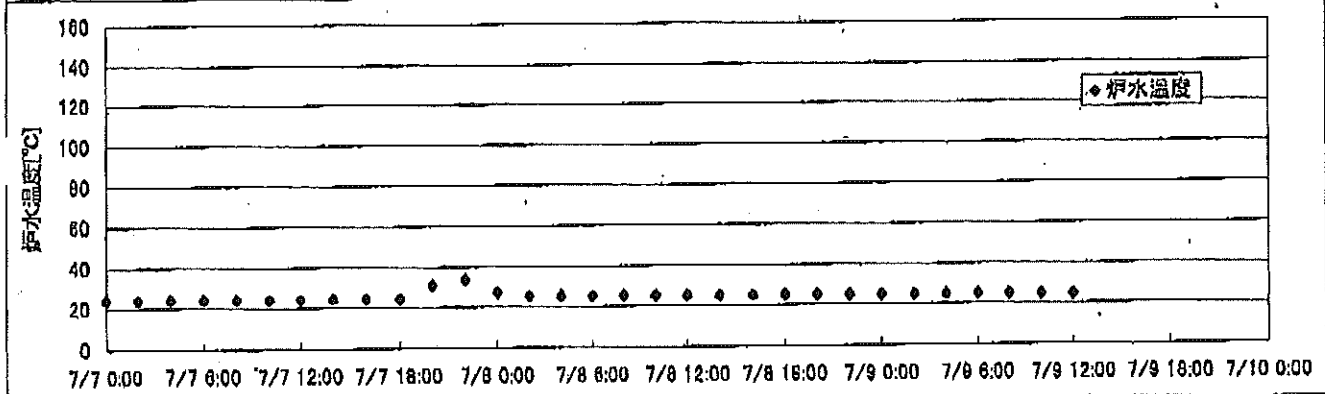
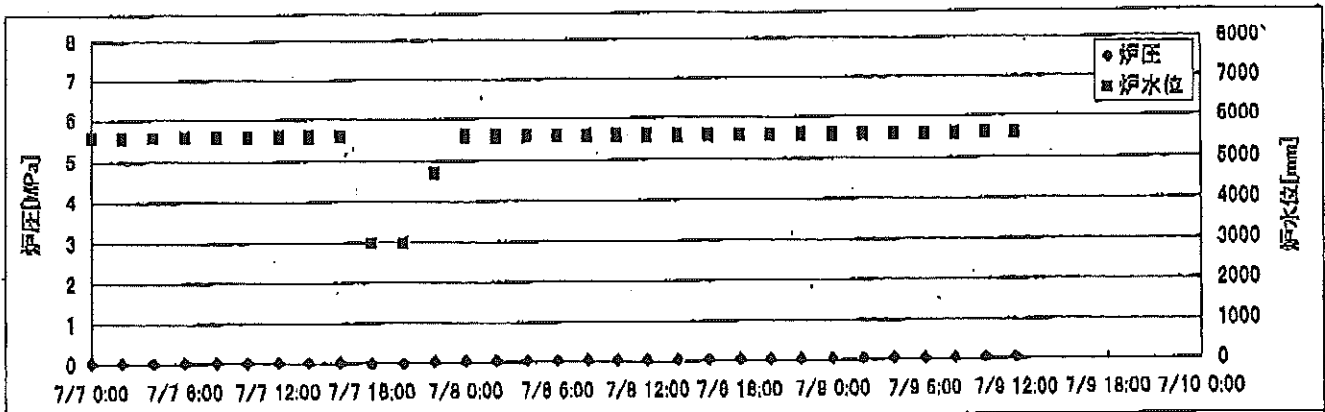
-7/8 13:34 2号機RHR(C)ポンプ点検のため、RHRポンプ(B)停止
17:09 2号機RHR(C)ポンプ点検終了に伴い、RHRポンプ(B)起動

2F-4号機

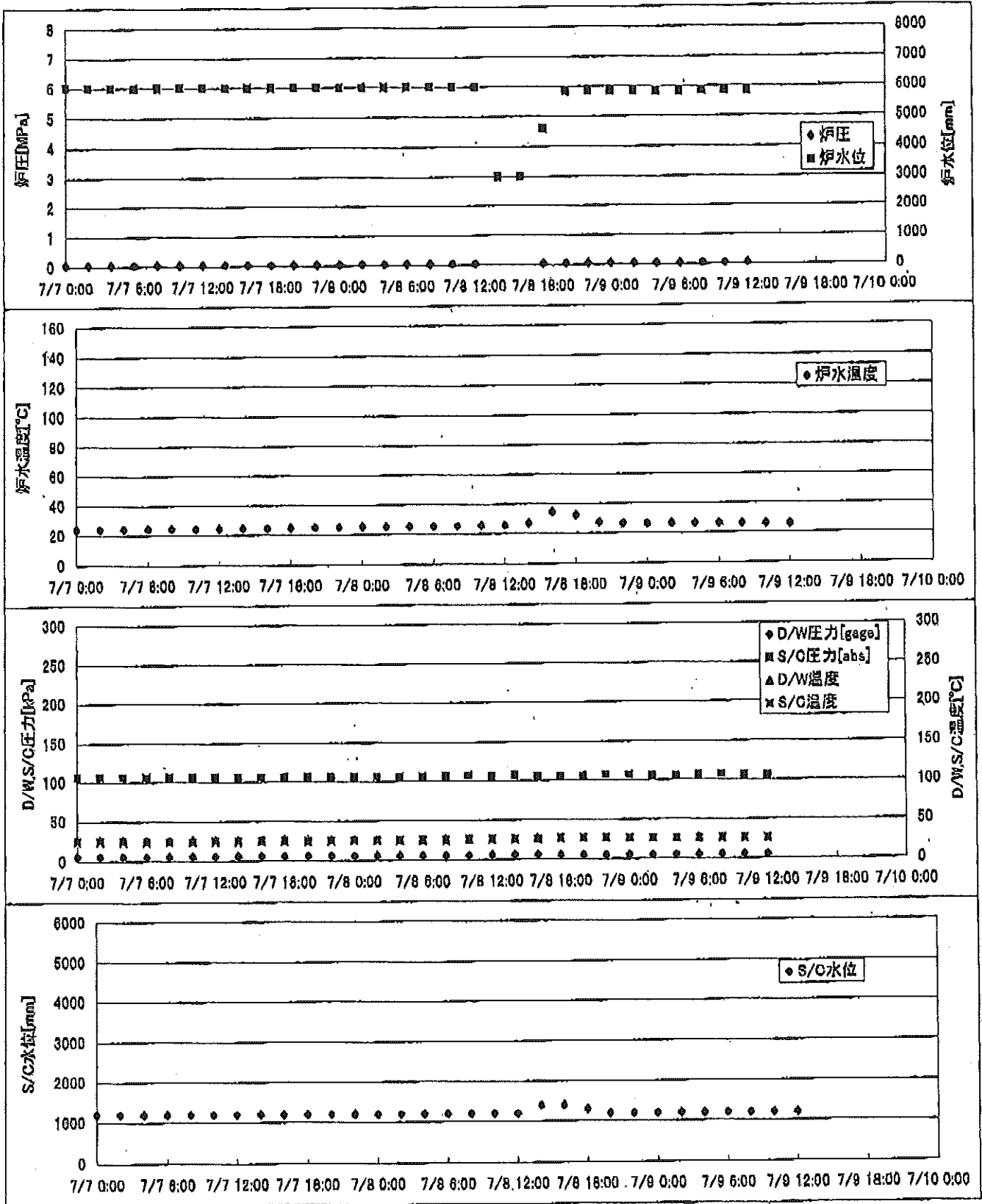
※燃料頂部(TAF)からの水位=炉水位+4200[mm]

| 時間 | 炉圧 [MPa (gage)] | 炉水位 [mm] 停止時 | 炉水温度[°C] | D/W圧力 [kPa(gage)] | D/W温度 [°C] | S/C圧力 [kPa(abs)] | S/C水位 [mm] | S/C温度 [°C] |
|----------------------|-----------------------|--------------------|-------------|----------------------|---------------|---------------------|---------------|---------------|
| 2011/7/7 0:00 | 0.05 | 4000 | 27.4 | 6 | 29.2 | 107 | 2000 | 28 |
| 2011/7/7 2:00 | 0.05 | 4050 | 27.6 | 7 | 29.4 | 107 | 2000 | 28 |
| 2011/7/7 4:00 | 0.05 | 4050 | 27.7 | 6 | 29.4 | 107 | 2000 | 28 |
| 2011/7/7 6:00 | 0.05 | 4100 | 27.8 | 6 | 29.3 | 107 | 2000 | 28 |
| 2011/7/7 8:00 | 0.05 | 4000 | 27.9 | 6 | 29.2 | 107 | 2000 | 28 |
| 2011/7/7 10:00 | 0.05 | 4000 | 27.9 | 6 | 29.1 | 107 | 2000 | 28 |
| 2011/7/7 12:00 | 0.05 | 4050 | 30.2 | 7 | 29.2 | 107 | 2000 | 28 |
| 2011/7/7 14:00 | 0.05 | 4050 | 33.9 | 7 | 29.6 | 107 | 2000 | 28 |
| 2011/7/7 16:00 | 0.06 | 4050 | 36.8 | 7 | 30.2 | 107 | 2000 | 28 |
| 2011/7/7 18:00 | 0.06 | 4050 | 34.0 | 7 | 30.9 | 107 | 2000 | 28 |
| 2011/7/7 20:00 | 0.05 | 4100 | 31.1 | 7 | 30.7 | 107 | 2000 | 28 |
| 2011/7/7 22:00 | 0.05 | 4050 | 29.9 | 7 | 30.2 | 107 | 2000 | 28 |
| 2011/7/8 0:00 | 0.05 | 4050 | 29.5 | 7 | 29.9 | 107 | 2000 | 28 |
| 2011/7/8 2:00 | 0.05 | 4100 | 29.3 | 7 | 29.7 | 107 | 2050 | 28 |
| 2011/7/8 4:00 | 0.06 | 4100 | 29.2 | 7 | 29.7 | 107 | 2000 | 28 |
| 2011/7/8 6:00 | 0.05 | 4000 | 29.1 | 6 | 29.1 | 107 | 2000 | 28 |
| 2011/7/8 8:00 | 0.05 | 4000 | 29.6 | 6 | 29.6 | 107 | 2000 | 28 |
| 2011/7/8 10:00 | 0.05 | 4000 | 29.1 | 6 | 29.5 | 107 | 2050 | 28 |
| 2011/7/8 12:00 | 0.05 | 4000 | 29.2 | 6 | 29.5 | 107 | 2050 | 28 |
| 2011/7/8 14:00 | 0.05 | 4000 | 29.3 | 6 | 29.5 | 107 | 2050 | 28 |
| 2011/7/8 16:00 | 0.05 | 4000 | 29.4 | 6 | 29.5 | 107 | 2050 | 28 |
| 2011/7/8 18:00 | 0.05 | 4000 | 29.5 | 6 | 29.5 | 107 | 2050 | 28 |
| 2011/7/8 20:00 | 0.05 | 4000 | 29.4 | 6 | 29.5 | 107 | 2050 | 28 |
| 2011/7/8 22:00 | 0.05 | 4000 | 29.2 | 6 | 29.6 | 107 | 2050 | 28 |
| 2011/7/9 0:00 | 0.05 | 4000 | 28.9 | 6 | 29.6 | 107 | 2050 | 28 |
| 2011/7/9 2:00 | 0.05 | 4000 | 28.9 | 6 | 29.4 | 107 | 2050 | 28 |
| 2011/7/9 4:00 | 0.05 | 4000 | 28.8 | 6 | 29.6 | 107 | 2050 | 28 |
| 2011/7/9 6:00 | 0.05 | 4000 | 28.7 | 6 | 29.6 | 107 | 2050 | 28 |
| 2011/7/9 8:00 | | | | | | | | |
| 2011/7/9 10:00 | | | | | | | | |
| 2011/7/9 12:00 | | | | | | | | |
| 2011/7/9 14:00 | | | | | | | | |
| 2011/7/9 16:00 | | | | | | | | |
| 2011/7/9 18:00 | | | | | | | | |
| 2011/7/9 20:00 | | | | | | | | |
| 2011/7/9 22:00 | | | | | | | | |
| 2011/7/10 0:00 | | | | | | | | |

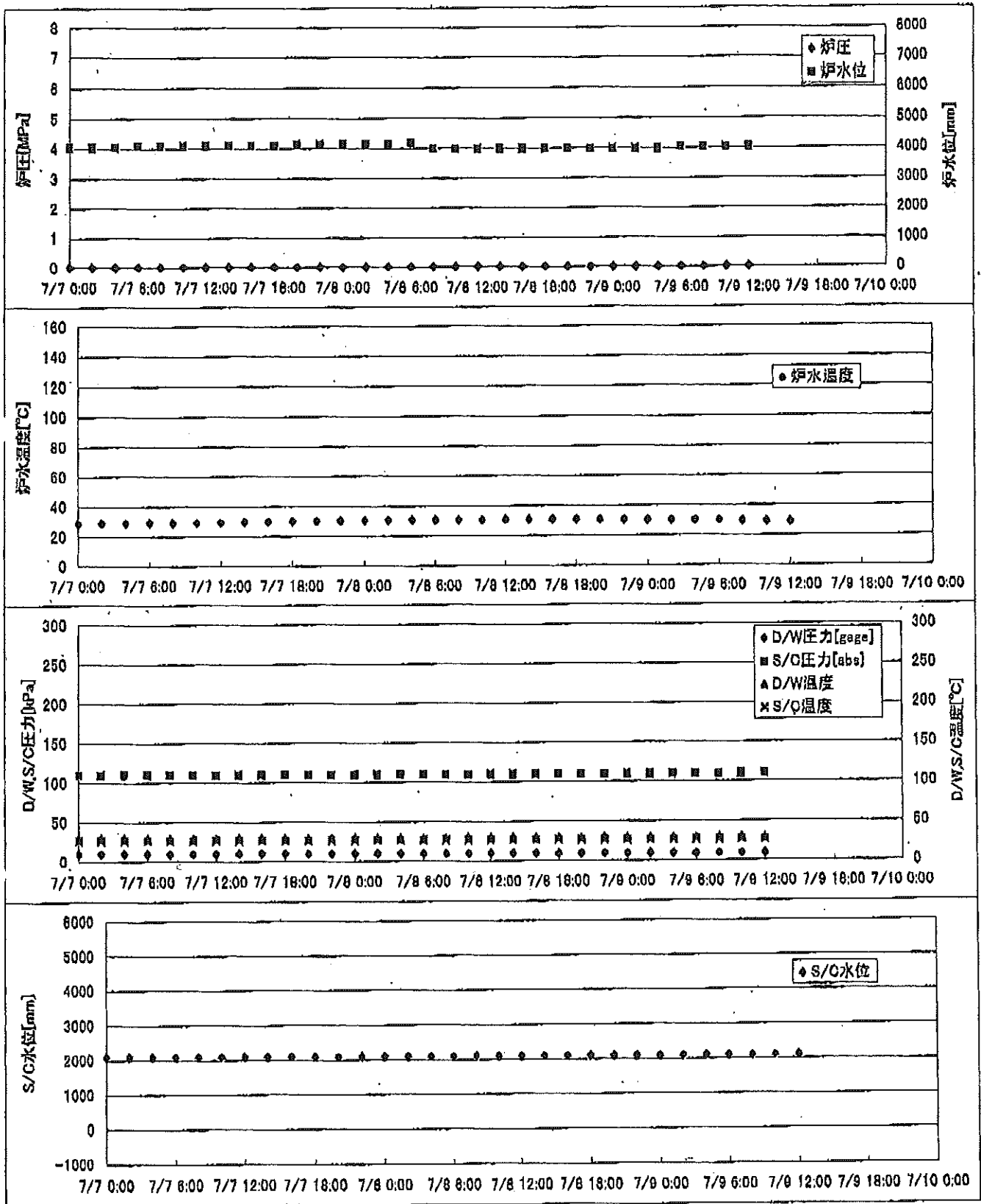
2F-1号機



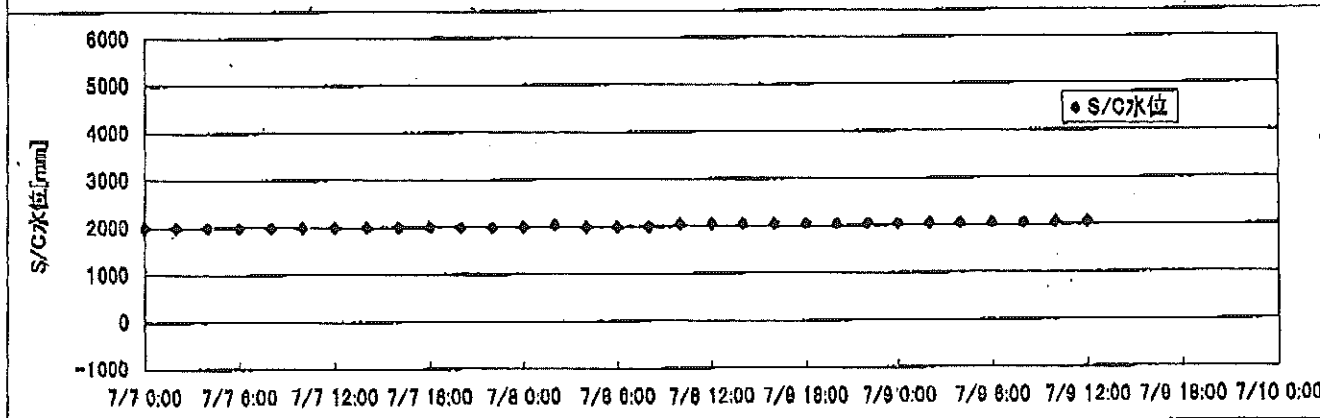
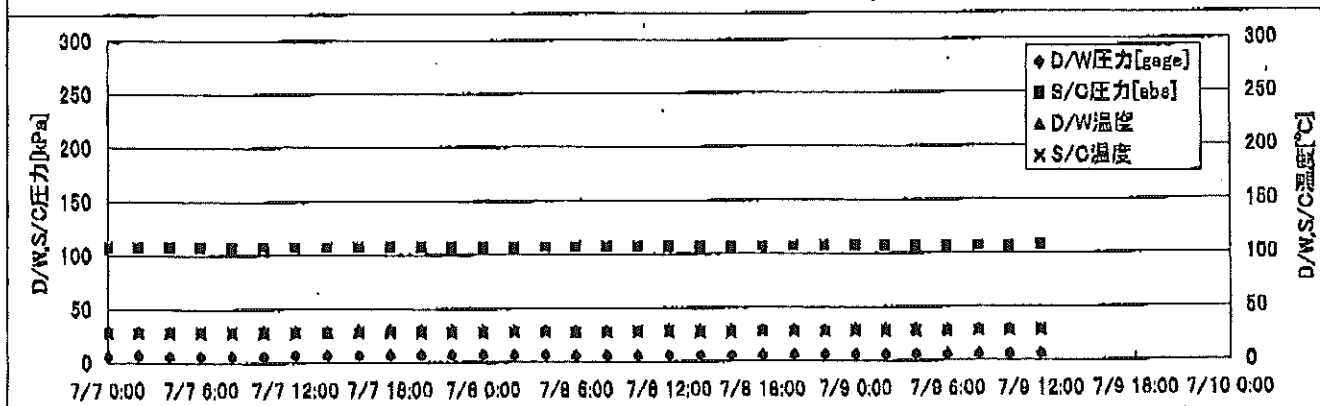
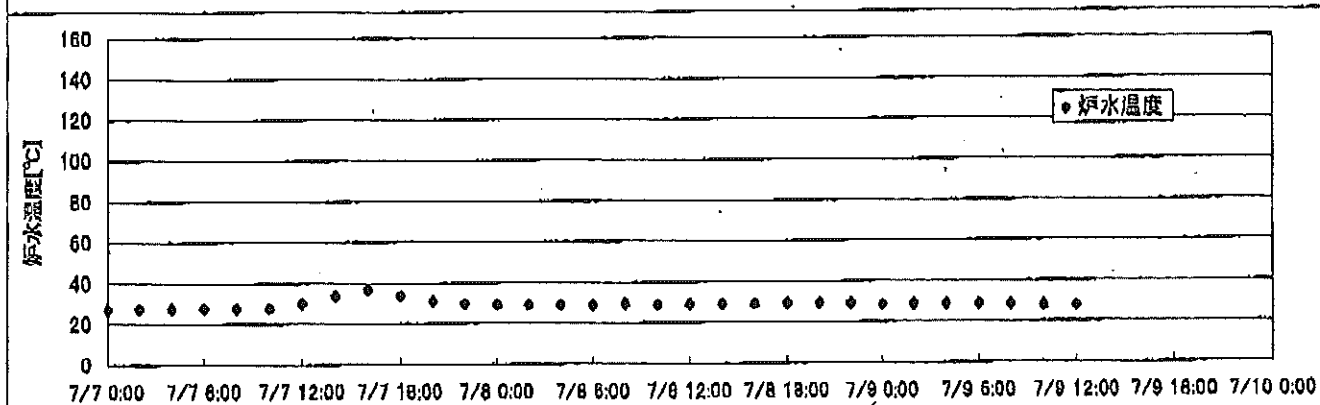
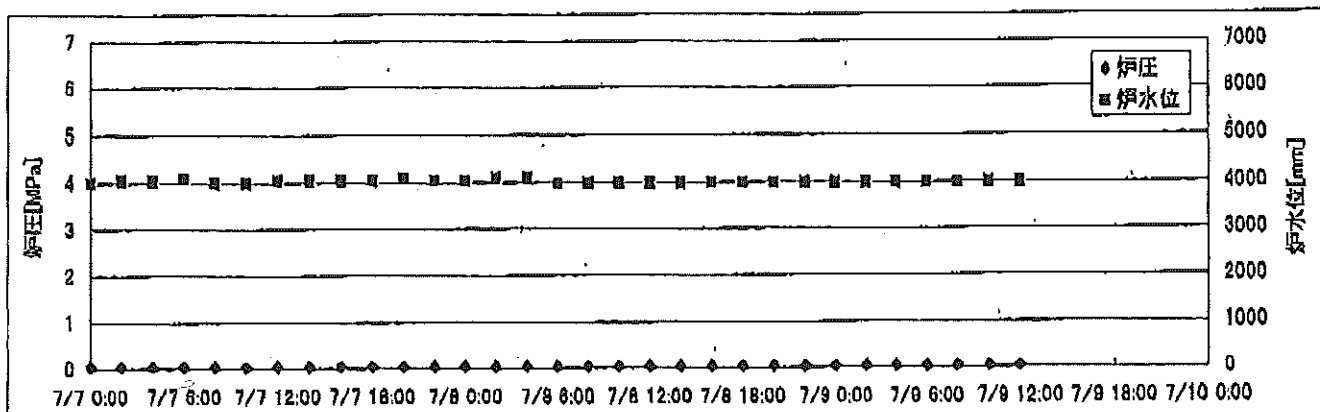
2F-2号機



2F-3号機



2F-4号機



2F-1号機

※燃料頂部(TAF)からの水位=炉水位+4200[mm]

| 時間 | 炉圧 [MPa (gage)] | 炉水位 [mm] 停止時 | 炉水温度[°C] | D/W圧力 [kPa(gage)] | D/W温度 [°C] | S/C圧力 [kPa(abs)] | S/C水位 [mm] | S/C温度 [°C] |
|----------------|-----------------------|--------------------|----------|----------------------|---------------|---------------------|---------------|---------------|
| 2011/7/7 0:00 | 0.04 | 5600 | 24.5 | 5 | 26.6 | 106 | 1970 | 24 |
| 2011/7/7 2:00 | 0.04 | 5600 | 24.3 | 5 | 26.6 | 106 | 1970 | 24 |
| 2011/7/7 4:00 | 0.04 | 5600 | 24.3 | 5 | 26.5 | 106 | 1970 | 24 |
| 2011/7/7 6:00 | 0.04 | 5600 | 24.2 | 5 | 26.6 | 106 | 1970 | 24 |
| 2011/7/7 8:00 | 0.04 | 5600 | 24.2 | 5 | 26.6 | 106 | 1970 | 24 |
| 2011/7/7 10:00 | 0.04 | 5600 | 24.3 | 5 | 26.6 | 106 | 1969 | 24 |
| 2011/7/7 12:00 | 0.04 | 5600 | 24.3 | 5 | 26.6 | 106 | 1970 | 24 |
| 2011/7/7 14:00 | 0.04 | 5600 | 24.4 | 5 | 26.4 | 106 | 1970 | 24 |
| 2011/7/7 16:00 | 0.04 | 5600 | 24.4 | 5 | 26.4 | 106 | 1969 | 24 |
| 2011/7/7 18:00 | 0.00 | 3000 | 24.5 | 6 | 26.5 | 106 | 2169 | 24 |
| 2011/7/7 20:00 | 0.01 | 3000 | 31.2 | 6 | 26.5 | 106 | 2178 | 24 |
| 2011/7/7 22:00 | 0.05 | 4700 | 33.7 | 5 | 27.3 | 106 | 2028 | 25 |
| 2011/7/8 0:00 | 0.06 | 5600 | 27.4 | 5 | 27.1 | 106 | 1965 | 26 |
| 2011/7/8 2:00 | 0.06 | 5600 | 25.6 | 5 | 26.7 | 106 | 1965 | 25 |
| 2011/7/8 4:00 | 0.06 | 5600 | 25.4 | 5 | 26.8 | 106 | 1965 | 25 |
| 2011/7/8 6:00 | 0.06 | 5600 | 25.3 | 5 | 26.8 | 106 | 1965 | 25 |
| 2011/7/8 8:00 | 0.06 | 5600 | 25.3 | 5 | 26.7 | 106 | 1965 | 26 |
| 2011/7/8 10:00 | 0.06 | 5600 | 25.3 | 5 | 26.7 | 106 | 1967 | 26 |
| 2011/7/8 12:00 | 0.06 | 5600 | 25.3 | 5 | 26.8 | 106 | 1966 | 26 |
| 2011/7/8 14:00 | 0.06 | 5600 | 25.3 | 5 | 26.6 | 106 | 1966 | 26 |
| 2011/7/8 16:00 | 0.06 | 5600 | 25.3 | 5 | 26.7 | 106 | 1967 | 26 |
| 2011/7/8 18:00 | 0.06 | 5600 | 25.3 | 5 | 26.8 | 106 | 1967 | 26 |
| 2011/7/8 20:00 | 0.06 | 5600 | 25.3 | 5 | 26.8 | 106 | 1967 | 26 |
| 2011/7/8 22:00 | 0.06 | 5600 | 25.2 | 5 | 26.8 | 106 | 1966 | 25 |
| 2011/7/9 0:00 | 0.06 | 5600 | 25.2 | 5 | 26.8 | 106 | 1966 | 25 |
| 2011/7/9 2:00 | 0.06 | 5600 | 25.2 | 4 | 26.8 | 106 | 1964 | 25 |
| 2011/7/9 4:00 | 0.06 | 5600 | 25.1 | 4 | 26.8 | 106 | 1966 | 25 |
| 2011/7/9 6:00 | 0.06 | 5600 | 25.0 | 4 | 26.8 | 106 | 1966 | 25 |
| 2011/7/9 8:00 | 0.06 | 5600 | 24.9 | 4 | 26.8 | 106 | 1966 | 25 |
| 2011/7/9 10:00 | 0.06 | 5600 | 24.7 | 4 | 26.8 | 106 | 1966 | 25 |
| 2011/7/9 12:00 | 0.06 | 5600 | 24.7 | 4 | 26.8 | 106 | 1966 | 25 |
| 2011/7/9 14:00 | | | | | | | | |
| 2011/7/9 16:00 | | | | | | | | |
| 2011/7/9 18:00 | | | | | | | | |
| 2011/7/9 20:00 | | | | | | | | |
| 2011/7/9 22:00 | | | | | | | | |
| 2011/7/10 0:00 | | | | | | | | |

2F-2号機

※燃料頂部(TAF)からの水位=炉水位+4200[mm]

| 時間 | 炉圧 [MPa (gage)] | 炉水位 [mm] 停止時 | 炉水温度[°C] | D/W圧力 [kPa(gage)] | D/W温度 [°C] | S/C圧力 [kPa(abs)] | S/C水位 [mm] | S/C温度 [°C] |
|-----------------------|-----------------------|--------------------|-------------|----------------------|---------------|---------------------|---------------|---------------|
| 2011/7/7 0:00 | 0.06 | 6000 | 24.2 | 6 | 26.4 | 106 | 1200 | 24 |
| 2011/7/7 2:00 | 0.06 | 6000 | 24.3 | 6 | 26.4 | 106 | 1200 | 24 |
| 2011/7/7 4:00 | 0.06 | 6000 | 24.4 | 6 | 26.3 | 106 | 1200 | 24 |
| 2011/7/7 6:00 | 0.06 | 6000 | 24.5 | 6 | 26.3 | 106 | 1200 | 24 |
| 2011/7/7 8:00 | 0.06 | 6000 | 24.6 | 6 | 26.5 | 106 | 1200 | 24 |
| 2011/7/7 10:00 | 0.06 | 6000 | 24.6 | 6 | 26.3 | 106 | 1200 | 24 |
| 2011/7/7 12:00 | 0.06 | 6000 | 24.7 | 6 | 26.3 | 106 | 1200 | 24 |
| 2011/7/7 14:00 | 0.06 | 6000 | 24.8 | 6 | 26.4 | 106 | 1200 | 24 |
| 2011/7/7 16:00 | 0.05 | 6000 | 24.9 | 6 | 26.4 | 106 | 1200 | 25 |
| 2011/7/7 18:00 | 0.05 | 6000 | 25.0 | 6 | 26.4 | 106 | 1200 | 25 |
| 2011/7/7 20:00 | 0.06 | 6000 | 25.1 | 6 | 26.5 | 106 | 1200 | 25 |
| 2011/7/7 22:00 | 0.05 | 6000 | 25.2 | 6 | 26.5 | 106 | 1200 | 25 |
| 2011/7/8 0:00 | 0.05 | 6000 | 25.4 | 6 | 26.5 | 106 | 1200 | 25 |
| 2011/7/8 2:00 | 0.06 | 6000 | 25.4 | 6 | 26.4 | 106 | 1200 | 25 |
| 2011/7/8 4:00 | 0.05 | 6000 | 25.5 | 6 | 26.5 | 106 | 1200 | 25 |
| 2011/7/8 6:00 | 0.06 | 6000 | 25.6 | 6 | 26.5 | 106 | 1200 | 25 |
| 2011/7/8 8:00 | 0.06 | 6000 | 25.6 | 6 | 26.5 | 106 | 1200 | 25 |
| 2011/7/8 10:00 | 0.06 | 6000 | 25.7 | 6 | 26.5 | 107 | 1200 | 26 |
| 2011/7/8 12:00 | 0.06 | 6000 | 25.8 | 6 | 26.5 | 106 | 1200 | 26 |
| 2011/7/8 14:00 | -0.01 | 3000 | 26.9 | 6 | 26.5 | 107 | 1400 | 26 |
| 2011/7/8 16:00 | -0.01 | 3000 | 34.6 | 6 | 26.9 | 106 | 1400 | 26 |
| 2011/7/8 18:00 | 0.06 | 4600 | 32.4 | 6 | 27.6 | 106 | 1300 | 27 |
| 2011/7/8 20:00 | 0.07 | 5850 | 27.4 | 6 | 27.3 | 106 | 1200 | 27 |
| 2011/7/8 22:00 | 0.07 | 5850 | 26.8 | 6 | 27.1 | 107 | 1200 | 27 |
| 2011/7/9 0:00 | 0.07 | 5850 | 26.6 | 6 | 26.8 | 107 | 1200 | 27 |
| 2011/7/9 2:00 | 0.07 | 5850 | 26.6 | 6 | 26.8 | 106 | 1200 | 27 |
| 2011/7/9 4:00 | 0.06 | 5850 | 26.5 | 6 | 26.7 | 106 | 1200 | 26 |
| 2011/7/9 6:00 | 0.06 | 5850 | 26.4 | 5 | 26.8 | 107 | 1200 | 26 |
| 2011/7/9 8:00 | 0.07 | 5850 | 26.2 | 5 | 26.8 | 107 | 1200 | 26 |
| 2011/7/9 10:00 | 0.06 | 5850 | 26.0 | 5 | 26.8 | 106 | 1200 | 26 |
| 2011/7/9 12:00 | 0.07 | 5850 | 25.8 | 5 | 26.8 | 106 | 1200 | 26 |
| 2011/7/9 14:00 | | | | | | | | |
| 2011/7/9 16:00 | | | | | | | | |
| 2011/7/9 18:00 | | | | | | | | |
| 2011/7/9 20:00 | | | | | | | | |
| 2011/7/9 22:00 | | | | | | | | |
| 2011/7/10 0:00 | | | | | | | | |

2F-3号機

※燃料頂部(TAF)からの水位=炉水位+4200[mm]

| 時間 | 炉圧 [MPa (gage)] | 炉水位 [mm] 停止時 | 炉水温度[°C] | D/W圧力 [kPa(gage)] | D/W温度 [°C] | S/C圧力 [kPa(abs)] | S/C水位 [mm] | S/C温度 [°C] |
|----------------|-----------------------|--------------------|----------|----------------------|---------------|---------------------|---------------|---------------|
| 2011/7/7 0:00 | 0.02 | 4050 | 29.1 | 10 | 29.5 | 110 | 2100 | 27 |
| 2011/7/7 2:00 | 0.02 | 4050 | 29.2 | 10 | 29.7 | 110 | 2100 | 27 |
| 2011/7/7 4:00 | 0.02 | 4050 | 29.3 | 10 | 29.7 | 110 | 2100 | 27 |
| 2011/7/7 6:00 | 0.02 | 4100 | 29.5 | 10 | 29.6 | 110 | 2100 | 27 |
| 2011/7/7 8:00 | 0.02 | 4100 | 29.4 | 10 | 29.6 | 110 | 2100 | 27 |
| 2011/7/7 10:00 | 0.02 | 4100 | 29.5 | 10 | 29.6 | 110 | 2100 | 27 |
| 2011/7/7 12:00 | 0.02 | 4100 | 29.7 | 10 | 29.6 | 110 | 2100 | 27 |
| 2011/7/7 14:00 | 0.02 | 4100 | 29.8 | 10 | 29.5 | 110 | 2100 | 27 |
| 2011/7/7 16:00 | 0.02 | 4100 | 30.1 | 10 | 29.7 | 110 | 2100 | 27 |
| 2011/7/7 18:00 | 0.02 | 4100 | 30.3 | 10 | 29.6 | 110 | 2100 | 27 |
| 2011/7/7 20:00 | 0.02 | 4150 | 30.4 | 10 | 29.6 | 110 | 2100 | 27 |
| 2011/7/7 22:00 | 0.02 | 4150 | 30.5 | 10 | 29.6 | 110 | 2100 | 27 |
| 2011/7/8 0:00 | 0.02 | 4150 | 30.7 | 10 | 29.7 | 110 | 2100 | 27 |
| 2011/7/8 2:00 | 0.02 | 4150 | 30.7 | 10 | 29.6 | 110 | 2100 | 27 |
| 2011/7/8 4:00 | 0.02 | 4150 | 30.8 | 10 | 29.6 | 110 | 2100 | 27 |
| 2011/7/8 6:00 | 0.02 | 4200 | 30.8 | 10 | 29.6 | 110 | 2100 | 27 |
| 2011/7/8 8:00 | 0.02 | 4000 | 30.8 | 10 | 29.7 | 110 | 2100 | 27 |
| 2011/7/8 10:00 | 0.02 | 4000 | 30.9 | 10 | 29.7 | 110 | 2100 | 27 |
| 2011/7/8 12:00 | 0.02 | 4000 | 31.0 | 10 | 29.8 | 110 | 2100 | 27 |
| 2011/7/8 14:00 | 0.02 | 4000 | 31.0 | 10 | 29.8 | 110 | 2100 | 27 |
| 2011/7/8 16:00 | 0.02 | 4000 | 31.1 | 10 | 29.8 | 110 | 2100 | 27 |
| 2011/7/8 18:00 | 0.02 | 4000 | 31.1 | 10 | 29.8 | 110 | 2100 | 27 |
| 2011/7/8 20:00 | 0.02 | 4000 | 31.0 | 10 | 29.8 | 110 | 2100 | 27 |
| 2011/7/8 22:00 | 0.02 | 4000 | 30.7 | 10 | 29.9 | 110 | 2100 | 27 |
| 2011/7/9 0:00 | 0.02 | 4000 | 30.5 | 10 | 29.7 | 110 | 2100 | 27 |
| 2011/7/9 2:00 | 0.02 | 4000 | 30.5 | 10 | 29.8 | 110 | 2100 | 27 |
| 2011/7/9 4:00 | 0.02 | 4000 | 30.4 | 10 | 29.9 | 110 | 2100 | 27 |
| 2011/7/9 6:00 | 0.02 | 4050 | 30.2 | 9 | 29.8 | 110 | 2100 | 27 |
| 2011/7/9 8:00 | 0.02 | 4050 | 29.8 | 9 | 29.8 | 110 | 2100 | 27 |
| 2011/7/9 10:00 | 0.02 | 4050 | 29.4 | 9 | 29.6 | 110 | 2100 | 27 |
| 2011/7/9 12:00 | 0.02 | 4050 | 29.1 | 9 | 29.6 | 110 | 2100 | 27 |
| 2011/7/9 14:00 | | | | | | | | |
| 2011/7/9 16:00 | | | | | | | | |
| 2011/7/9 18:00 | | | | | | | | |
| 2011/7/9 20:00 | | | | | | | | |
| 2011/7/9 22:00 | | | | | | | | |
| 2011/7/10 0:00 | | | | | | | | |

2F-4号機

※燃料頂部(TAF)からの水位=炉水位+4200[mm]

| 時間 | 炉圧 [MPa (gage)] | 炉水位 [mm] 停止時 | 炉水温度[°C] | D/W圧力 [kPa(gage)] | D/W温度 [°C] | S/C圧力 [kPa(abs)] | S/C水位 [mm] | S/C温度 [°C] |
|----------------|-----------------------|--------------------|----------|----------------------|---------------|---------------------|---------------|---------------|
| 2011/7/7 0:00 | 0.05 | 4000 | 27.4 | 6 | 29.2 | 107 | 2000 | 28 |
| 2011/7/7 2:00 | 0.05 | 4050 | 27.6 | 7 | 29.4 | 107 | 2000 | 28 |
| 2011/7/7 4:00 | 0.05 | 4050 | 27.7 | 6 | 29.4 | 107 | 2000 | 28 |
| 2011/7/7 6:00 | 0.05 | 4100 | 27.8 | 6 | 29.3 | 107 | 2000 | 28 |
| 2011/7/7 8:00 | 0.05 | 4000 | 27.9 | 6 | 29.2 | 107 | 2000 | 28 |
| 2011/7/7 10:00 | 0.05 | 4000 | 27.9 | 6 | 29.1 | 107 | 2000 | 28 |
| 2011/7/7 12:00 | 0.05 | 4050 | 30.2 | 7 | 29.2 | 107 | 2000 | 28 |
| 2011/7/7 14:00 | 0.05 | 4050 | 33.9 | 7 | 29.6 | 107 | 2000 | 28 |
| 2011/7/7 16:00 | 0.05 | 4050 | 36.8 | 7 | 30.2 | 107 | 2000 | 28 |
| 2011/7/7 18:00 | 0.05 | 4050 | 34.0 | 7 | 30.9 | 107 | 2000 | 28 |
| 2011/7/7 20:00 | 0.05 | 4100 | 31.1 | 7 | 30.7 | 107 | 2000 | 28 |
| 2011/7/7 22:00 | 0.05 | 4050 | 29.9 | 7 | 30.2 | 107 | 2000 | 28 |
| 2011/7/8 0:00 | 0.05 | 4050 | 29.5 | 7 | 29.9 | 107 | 2000 | 28 |
| 2011/7/8 2:00 | 0.05 | 4100 | 29.3 | 7 | 29.7 | 107 | 2050 | 28 |
| 2011/7/8 4:00 | 0.05 | 4100 | 29.2 | 7 | 29.7 | 107 | 2000 | 28 |
| 2011/7/8 6:00 | 0.05 | 4000 | 29.1 | 6 | 29.1 | 107 | 2000 | 28 |
| 2011/7/8 8:00 | 0.05 | 4000 | 29.6 | 6 | 29.6 | 107 | 2000 | 28 |
| 2011/7/8 10:00 | 0.05 | 4000 | 29.1 | 6 | 29.5 | 107 | 2050 | 28 |
| 2011/7/8 12:00 | 0.05 | 4000 | 29.2 | 6 | 29.5 | 107 | 2050 | 28 |
| 2011/7/8 14:00 | 0.05 | 4000 | 29.3 | 6 | 29.5 | 107 | 2050 | 28 |
| 2011/7/8 16:00 | 0.05 | 4000 | 29.4 | 6 | 29.5 | 107 | 2050 | 28 |
| 2011/7/8 18:00 | 0.05 | 4000 | 29.5 | 6 | 29.5 | 107 | 2050 | 28 |
| 2011/7/8 20:00 | 0.05 | 4000 | 29.4 | 6 | 29.5 | 107 | 2050 | 28 |
| 2011/7/8 22:00 | 0.05 | 4000 | 29.2 | 6 | 29.6 | 107 | 2050 | 28 |
| 2011/7/9 0:00 | 0.05 | 4000 | 28.9 | 6 | 29.6 | 107 | 2050 | 28 |
| 2011/7/9 2:00 | 0.05 | 4000 | 28.9 | 6 | 29.4 | 107 | 2050 | 28 |
| 2011/7/9 4:00 | 0.05 | 4000 | 28.8 | 6 | 29.6 | 107 | 2050 | 28 |
| 2011/7/9 6:00 | 0.05 | 4000 | 28.7 | 6 | 29.6 | 107 | 2050 | 28 |
| 2011/7/9 8:00 | 0.05 | 4000 | 28.4 | 6 | 29.5 | 107 | 2050 | 28 |
| 2011/7/9 10:00 | 0.05 | 4000 | 28.0 | 6 | 29.5 | 106 | 2050 | 28 |
| 2011/7/9 12:00 | 0.05 | 4000 | 27.8 | 6 | 29.4 | 107 | 2050 | 28 |
| 2011/7/9 14:00 | | | | | | | | |
| 2011/7/9 16:00 | | | | | | | | |
| 2011/7/9 18:00 | | | | | | | | |
| 2011/7/9 20:00 | | | | | | | | |
| 2011/7/9 22:00 | | | | | | | | |
| 2011/7/10 0:00 | | | | | | | | |