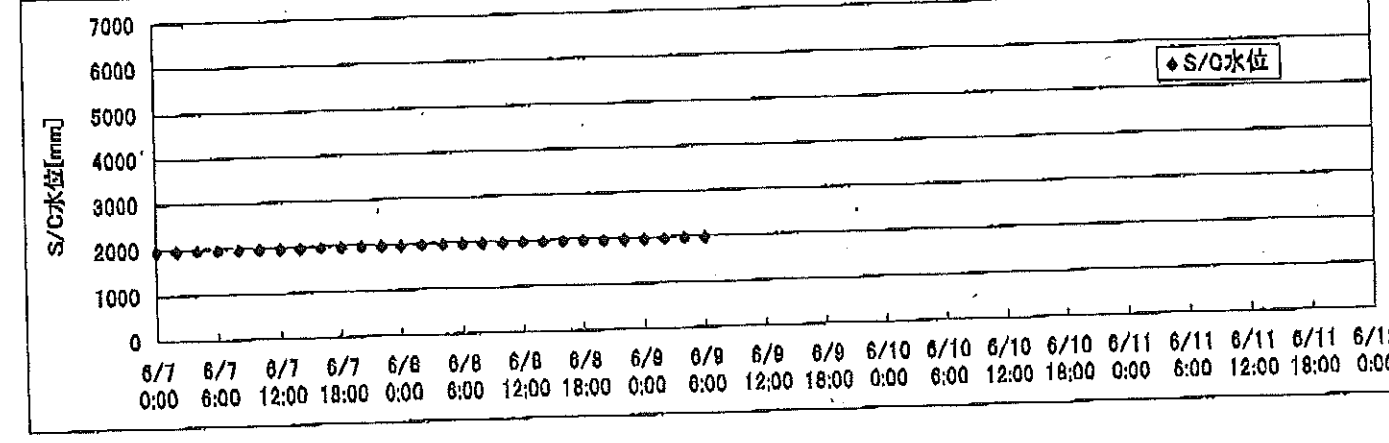
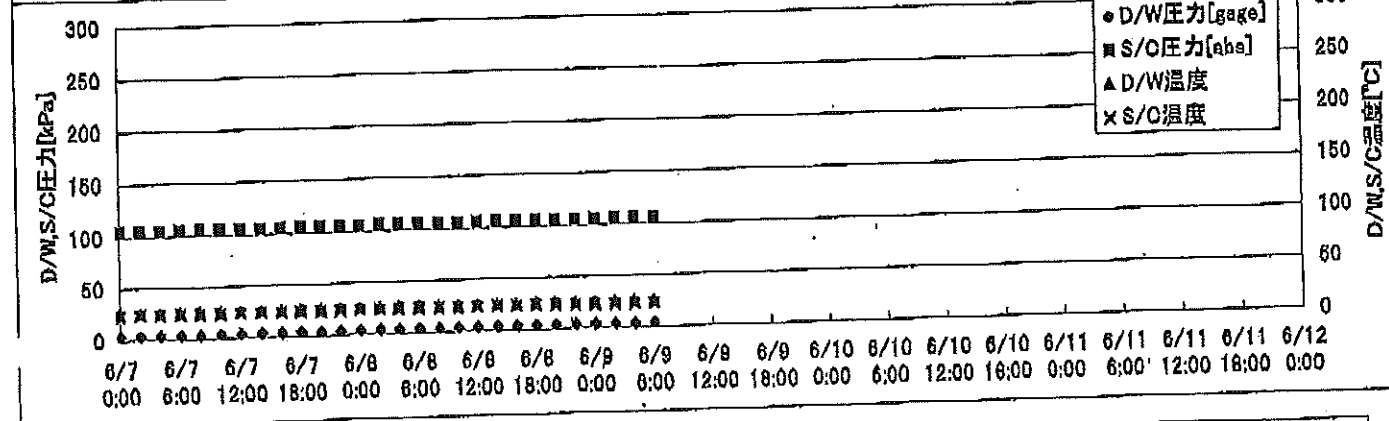
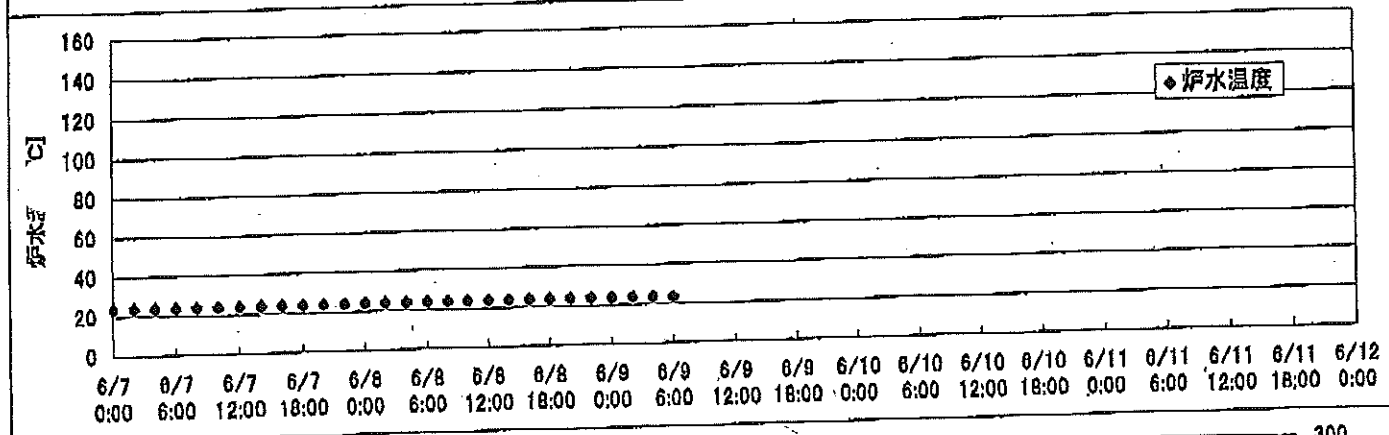
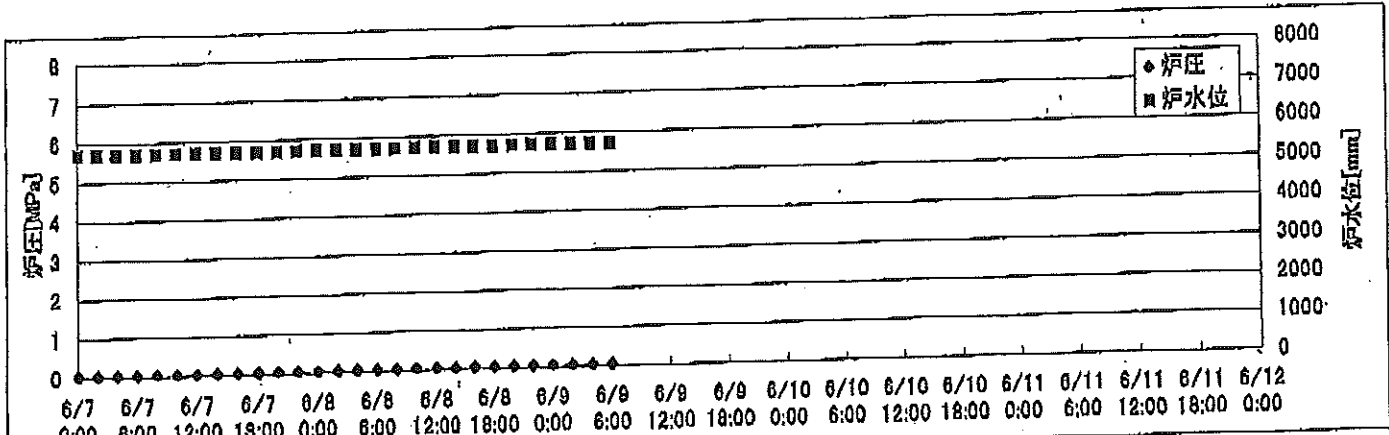
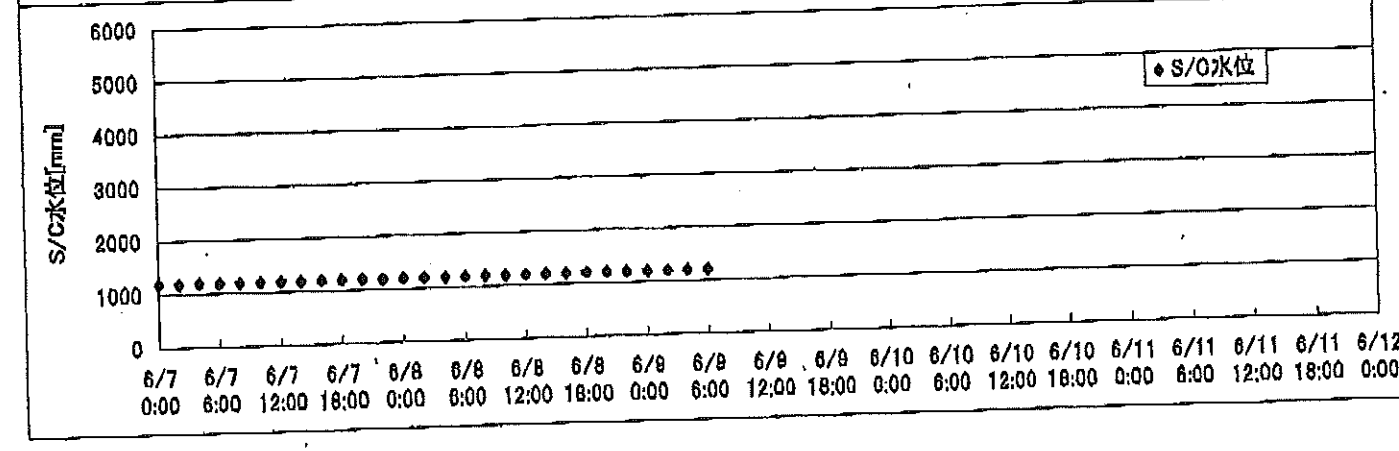
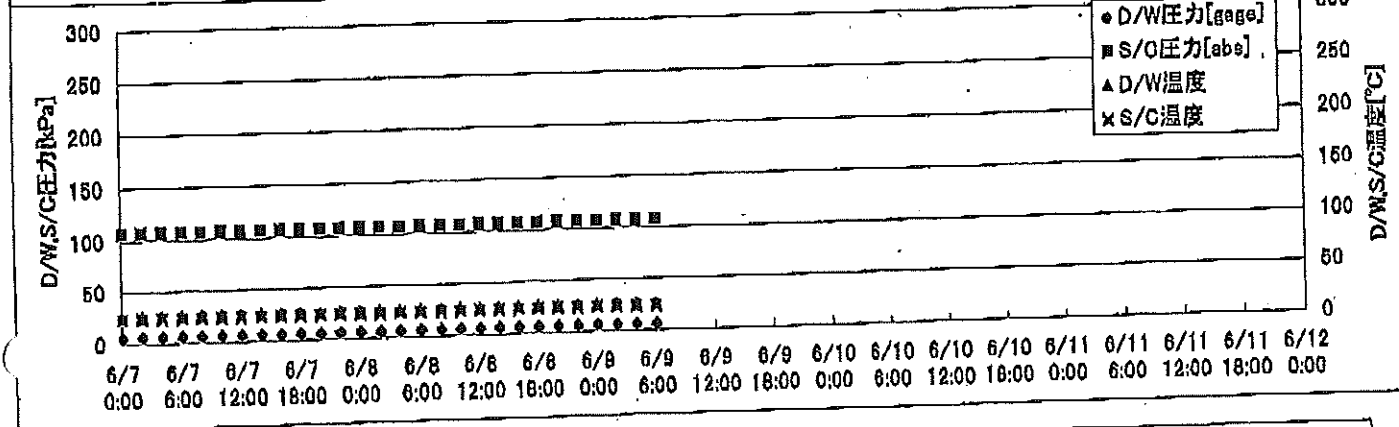
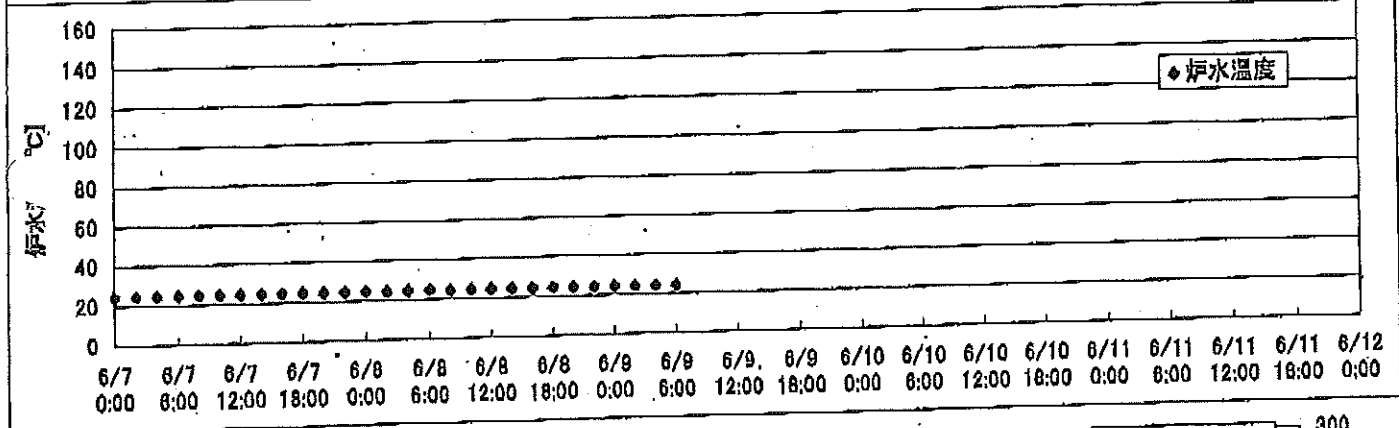
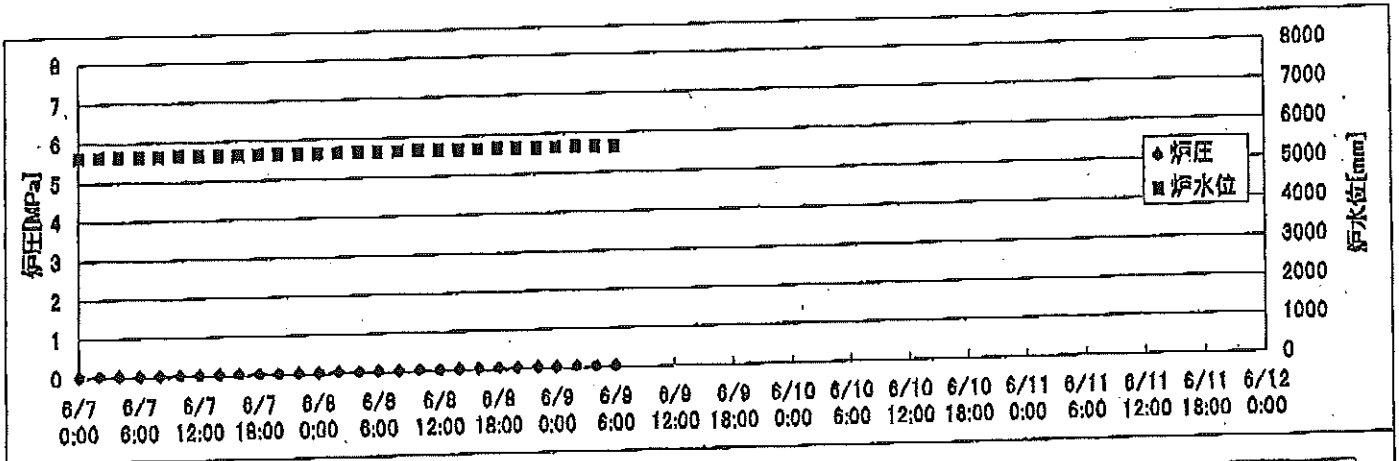


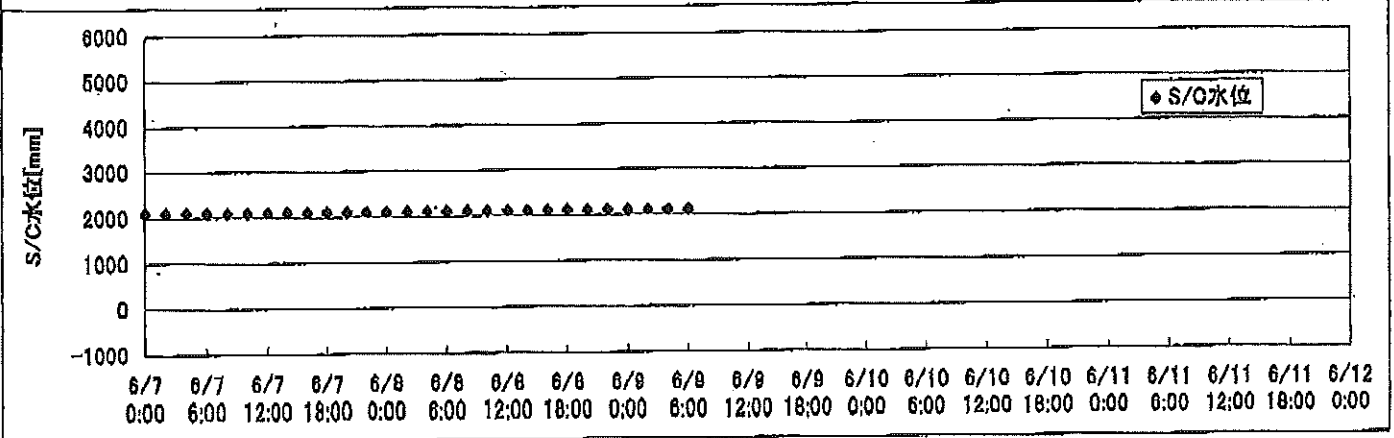
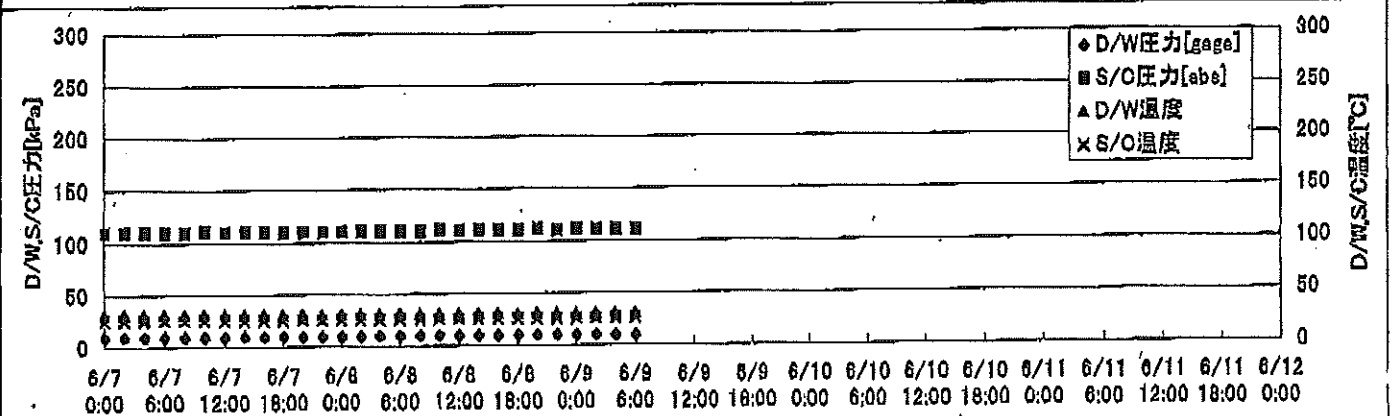
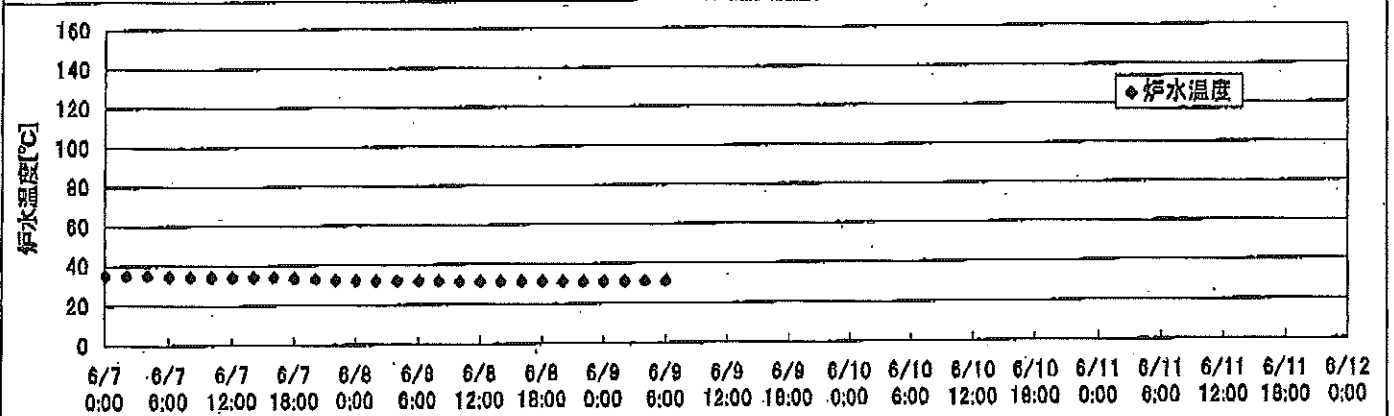
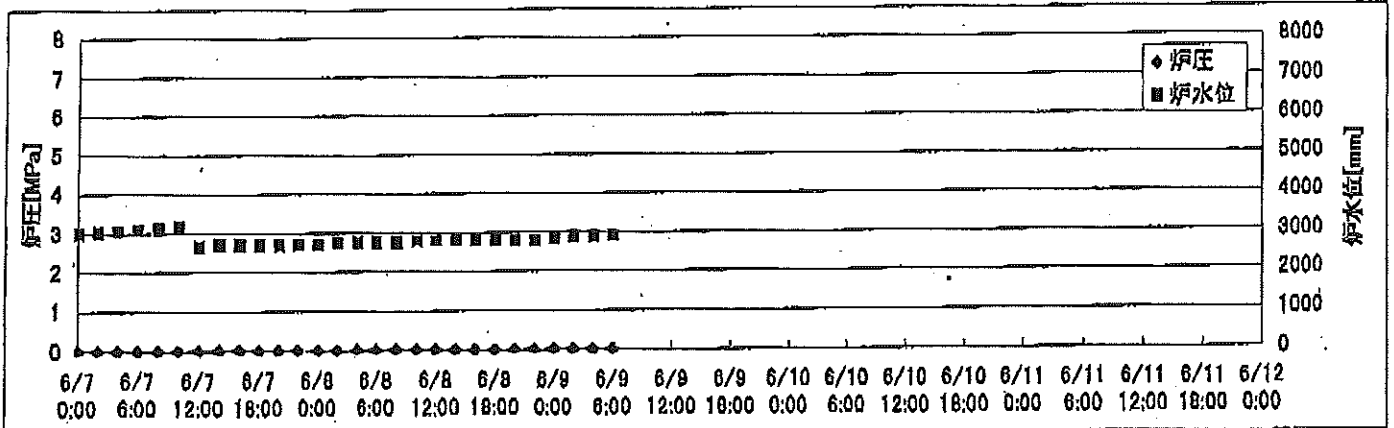
2F-1号機



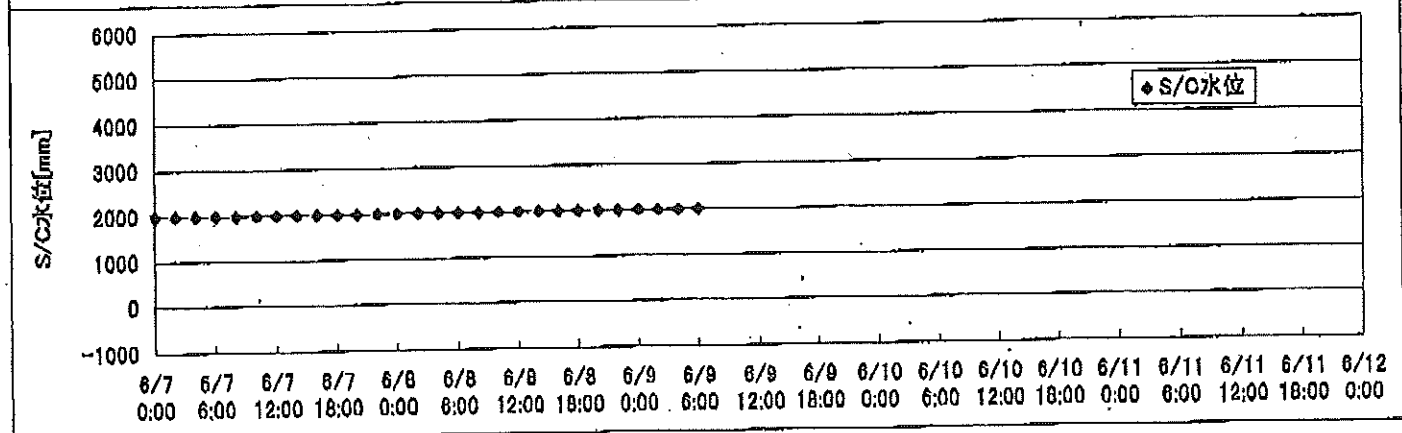
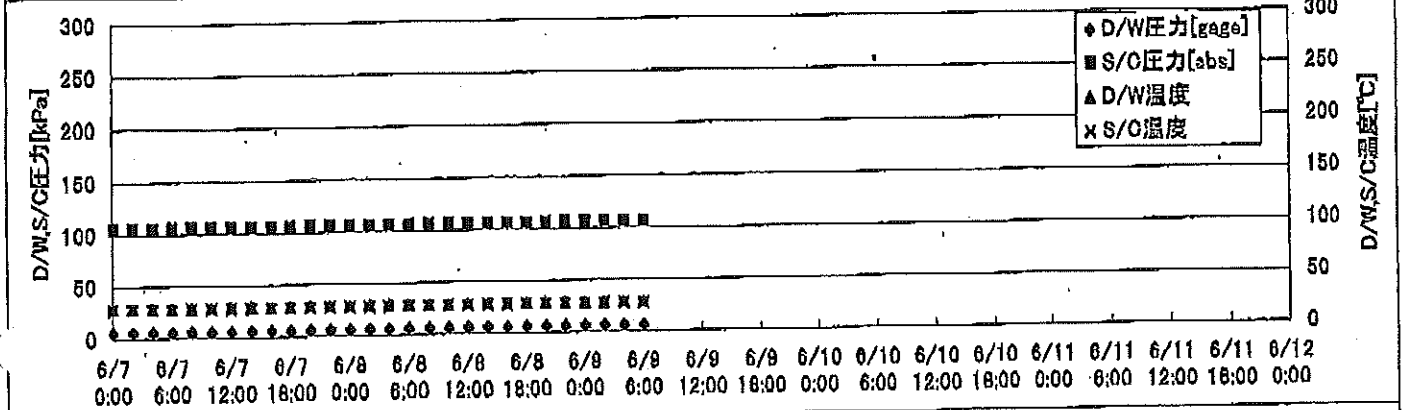
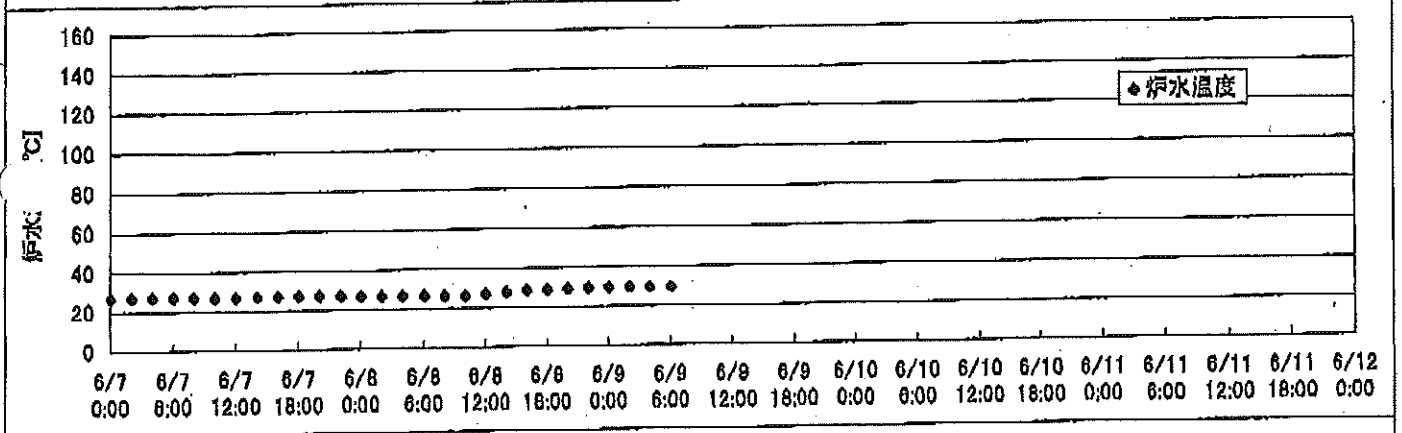
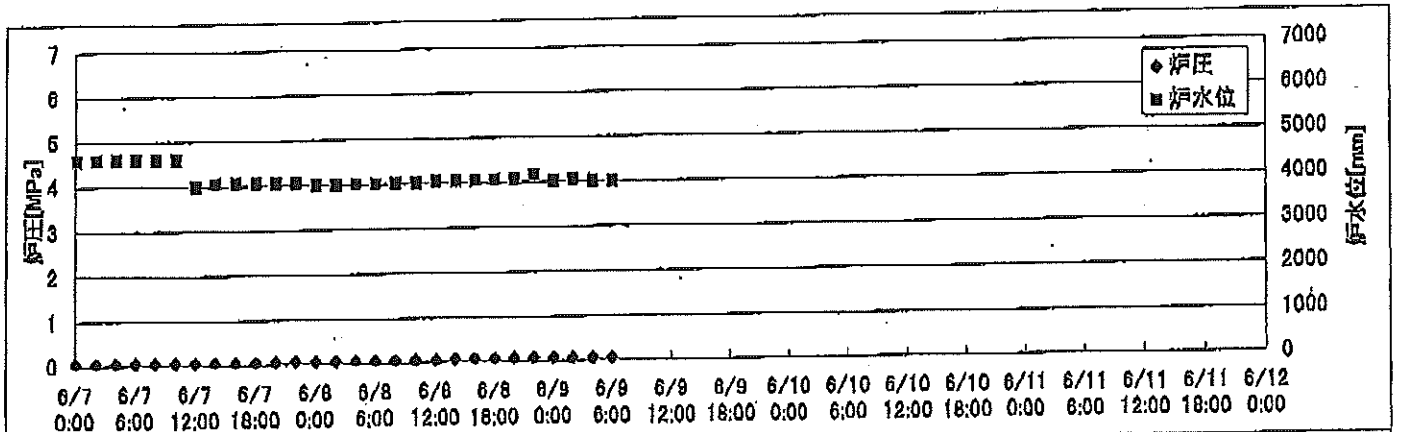
2F-2号機



2F-3号機



2F-4号機



2F-1号機

※燃料頂部(TAF)からの水位=炉水位+4200[mm]

時間	炉圧 [MPa (gage)]	炉水位 [mm] 停止時	炉水温度[°C]	D/W圧力 [kPa(gage)]	D/W温度 [°C]	S/C圧力 [kPa(abs)]	S/C水位 [mm]	S/C温度 [°C]
2011/6/7 0:00	0.05	5700	23.8	4	25.8	105	1960	24
2011/6/7 2:00	0.05	5700	23.9	4	25.8	105	1960	24
2011/6/7 4:00	0.05	5700	23.9	4	25.7	105	1960	24
2011/6/7 6:00	0.05	5700	24.0	4	25.7	105	1960	24
2011/6/7 8:00	0.05	5700	24.0	4	25.7	105	1960	24
2011/6/7 10:00	0.05	5700	24.0	4	25.8	105	1960	24
2011/6/7 12:00	0.05	5700	24.0	4	25.8	105	1960	24
2011/6/7 14:00	0.05	5700	24.0	4	25.8	105	1959	24
2011/6/7 16:00	0.05	5700	24.0	4	25.8	105	1960	24
2011/6/7 18:00	0.05	5700	24.0	4	25.8	105	1960	24
2011/6/7 20:00	0.05	5700	24.0	4	25.8	105	1960	24
2011/6/7 22:00	0.05	5700	24.0	4	25.8	105	1960	24
2011/6/8 0:00	0.05	5700	24.0	4	25.8	105	1960	24
2011/6/8 2:00	0.05	5700	24.0	4	25.8	105	1960	24
2011/6/8 4:00	0.05	5700	24.0	4	25.7	105	1960	24
2011/6/8 6:00	0.05	5700	23.9	4	25.8	105	1960	24
2011/6/8 8:00	0.05	5700	23.8	4	25.8	105	1960	24
2011/6/8 10:00	0.05	5700	23.8	4	25.8	105	1958	24
2011/6/8 12:00	0.05	5700	23.7	4	25.8	105	1960	24
2011/6/8 14:00	0.05	5700	23.7	4	25.8	105	1958	24
2011/6/8 16:00	0.05	5700	23.7	4	25.8	105	1959	24
2011/6/8 18:00	0.05	5700	23.7	4	25.8	105	1958	24
2011/6/8 20:00	0.05	5700	23.6	4	25.7	105	1959	24
2011/6/8 22:00	0.05	5700	23.6	4	25.8	105	1960	23
2011/6/9 0:00	0.05	5700	23.5	4	25.8	105	1958	23
2011/6/9 2:00	0.05	5700	23.5	4	25.7	105	1959	23
2011/6/9 4:00	0.05	5700	23.5	4	25.8	105	1959	23
2011/6/9 6:00	0.05	5700	23.4	4	25.8	105	1958	23
2011/6/9 8:00								
2011/6/9 10:00								
2011/6/9 12:00								
2011/6/9 14:00								
2011/6/9 16:00								
2011/6/9 18:00								
2011/6/9 20:00								
2011/6/9 22:00								
2011/6/10 0:00								

2F-2号機

※燃料頂部(TAF)からの水位=炉水位+4200[mm]

時間	炉圧 [MPa (gage)]	炉水位 [mm] 停止時	炉水温度[°C]	D/W圧力 [kPa(gage)]	D/W温度 [°C]	S/C圧力 [kPa(abs)]	S/C水位 [mm]	S/C温度 [°C]
2011/6/7 0:00	0.03	5650	24.5	7	26.2	107	1200	24
2011/6/7 2:00	0.04	5650	24.6	7	26.2	107	1200	24
2011/6/7 4:00	0.04	5650	24.6	7	26.2	107	1200	24
2011/6/7 6:00	0.03	5650	24.7	7	26.2	107	1200	24
2011/6/7 8:00	0.03	5650	24.7	7	26.2	107	1200	24
2011/6/7 10:00	0.03	5650	24.7	7	26.2	107	1200	24
2011/6/7 12:00	0.03	5650	24.7	7	26.2	107	1200	24
2011/6/7 14:00	0.04	5650	24.7	7	26.2	107	1200	24
2011/6/7 16:00	0.03	5650	24.7	7	26.2	107	1200	24
2011/6/7 18:00	0.03	5650	24.7	7	26.2	107	1200	24
2011/6/7 20:00	0.03	5650	24.7	7	26.2	107	1200	24
2011/6/7 22:00	0.03	5650	24.7	7	26.2	107	1200	24
2011/6/8 0:00	0.03	5650	24.7	7	26.2	107	1200	24
2011/6/8 2:00	0.04	5650	24.6	7	26.2	107	1200	24
2011/6/8 4:00	0.03	5650	24.6	7	26.2	107	1200	24
2011/6/8 6:00	0.04	5650	24.6	7	26.3	107	1200	24
2011/6/8 8:00	0.03	5650	24.5	7	26.3	107	1200	24
2011/6/8 10:00	0.03	5650	24.5	7	26.3	107	1200	24
2011/6/8 12:00	0.03	5650	24.5	7	26.2	107	1200	24
2011/6/8 14:00	0.04	5650	24.4	7	26.0	107	1200	24
2011/6/8 16:00	0.04	5650	24.3	7	26.0	107	1200	24
2011/6/8 18:00	0.04	5650	24.3	7	26.0	107	1200	24
2011/6/8 20:00	0.04	5650	24.3	7	26.0	107	1200	24
2011/6/8 22:00	0.04	5650	24.2	7	26.2	107	1200	24
2011/6/9 0:00	0.03	5650	24.2	7	26.2	107	1200	24
2011/6/9 2:00	0.03	5650	24.2	7	26.2	107	1200	24
2011/6/9 4:00	0.03	5650	24.2	7	26.2	107	1200	24
2011/6/9 6:00	0.03	5650	24.1	7	26.2	107	1200	24
2011/6/9 8:00								
2011/6/9 10:00								
2011/6/9 12:00								
2011/6/9 14:00								
2011/6/9 16:00								
2011/6/9 18:00								
2011/6/9 20:00								
2011/6/9 22:00								
2011/6/10 0:00								

2F-3号機

※燃料頂部(TAF)からの水位=炉水位+4200[mm]

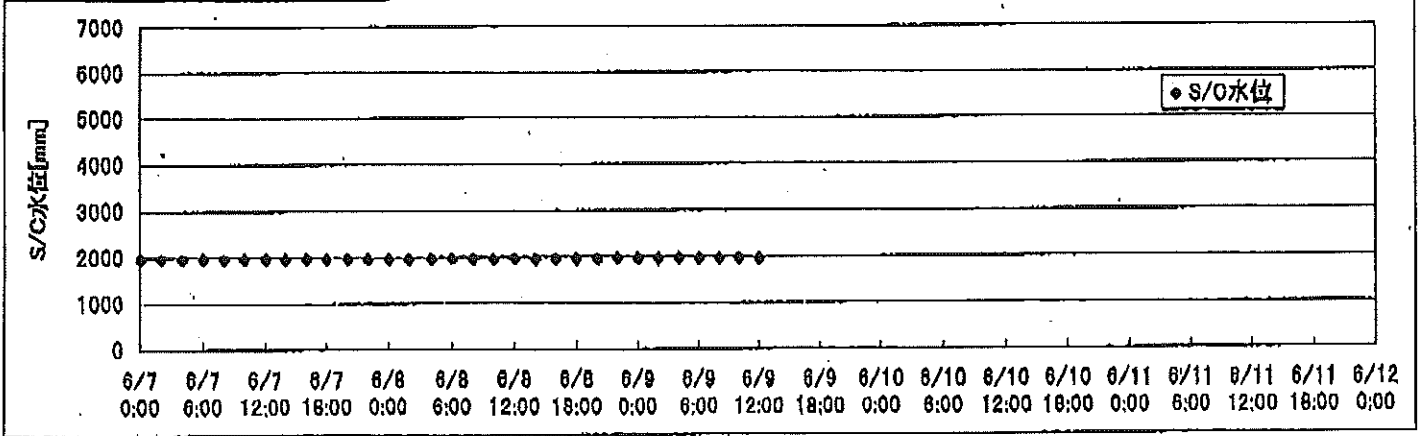
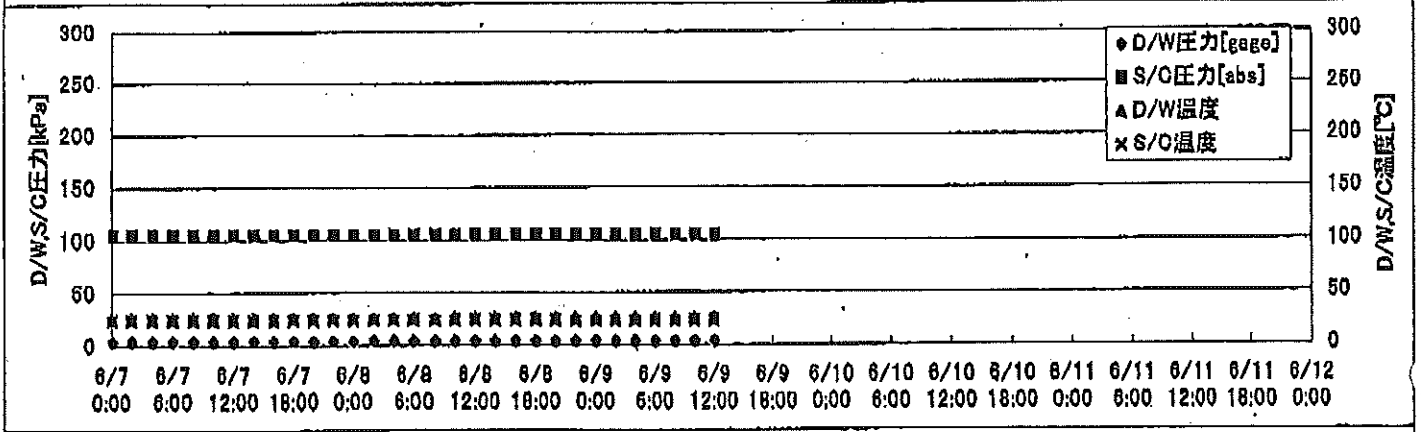
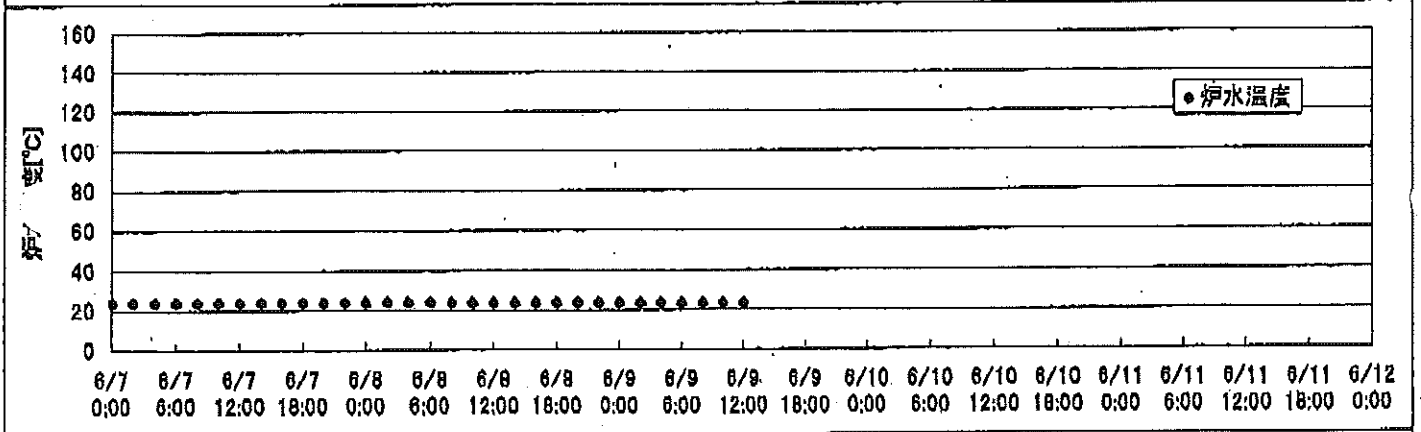
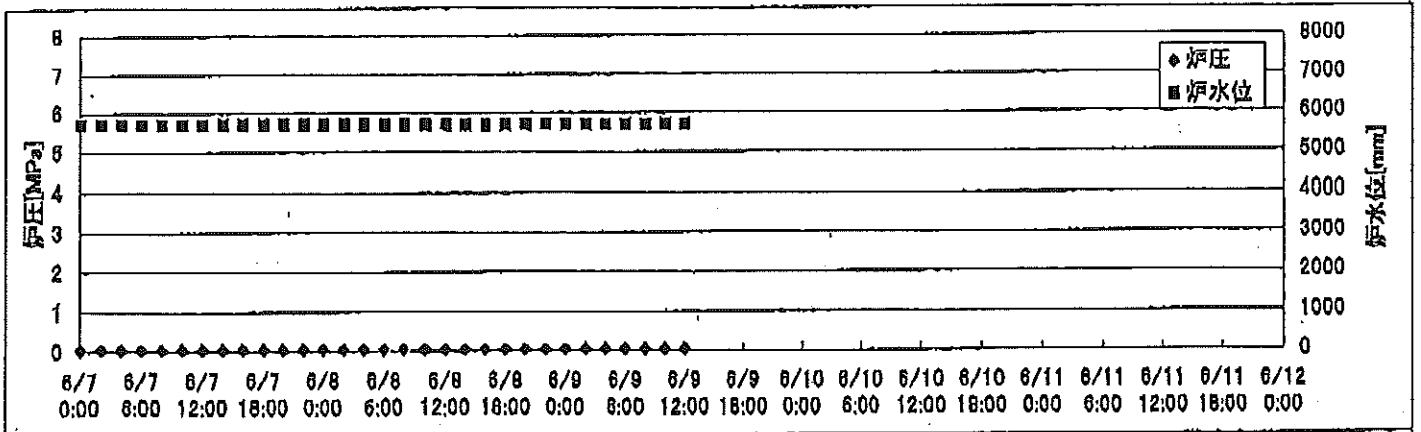
時間	炉圧 [MPa (gage)]	炉水位 [mm] 停止時	炉水温度[°C]	D/W圧力 [kPa(gage)]	D/W温度 [°C]	S/C圧力 [kPa(abs)]	S/C水位 [mm]	S/C温度 [°C]
2011/6/7 0:00	0.00	3005	35.5	10	31.5	110	2100	26
2011/6/7 2:00	0.00	3036	35.1	10	31.5	110	2100	26
2011/6/7 4:00	0.00	3063	34.9	10	31.5	110	2100	26
2011/6/7 6:00	0.00	3095	34.6	10	31.5	110	2100	26
2011/6/7 8:00	0.00	3123	34.4	10	31.5	110	2100	26
2011/6/7 10:00	0.01	3161	34.1	10	31.4	111	2100	26
2011/6/7 12:00	0.01	2650	34.1	10	31.4	110	2100	26
2011/6/7 14:00	0.01	2700	34.1	10	31.4	110	2100	26
2011/6/7 16:00	0.01	2700	34.1	10	31.4	110	2100	26
2011/6/7 18:00	0.01	2700	33.5	10	31.3	110	2100	26
2011/6/7 20:00	0.01	2700	33.0	10	31.3	110	2100	26
2011/6/7 22:00	0.01	2700	32.6	10	31.2	110	2100	26
2011/6/8 0:00	0.01	2700	32.2	10	31.1	110	2100	26
2011/6/8 2:00	0.01	2750	32.0	10	31.0	110	2100	26
2011/6/8 4:00	0.01	2750	31.9	10	31.0	110	2100	26
2011/6/8 6:00	0.01	2750	31.7	10	31.0	110	2100	26
2011/6/8 8:00	0.01	2750	31.5	10	30.9	110	2100	26
2011/6/8 10:00	0.01	2800	31.4	10	30.7	111	2100	26
2011/6/8 12:00	0.01	2800	31.3	10	30.7	110	2100	26
2011/6/8 14:00	0.01	2800	31.2	10	30.7	111	2100	26
2011/6/8 16:00	0.01	2800	31.2	10	30.7	110	2100	26
2011/6/8 18:00	0.01	2800	31.2	10	30.7	110	2100	26
2011/6/8 20:00	0.01	2800	31.0	10	30.7	111	2100	26
2011/6/8 22:00	0.01	2800	31.0	10	30.6	110	2100	26
2011/6/9 0:00	0.01	2850	30.9	10	30.6	111	2100	26
2011/6/9 2:00	0.01	2900	30.9	10	30.6	110	2100	26
2011/6/9 4:00	0.01	2900	30.9	10	30.6	110	2100	26
2011/6/9 6:00	0.01	2900	30.9	10	30.6	110	2100	27
2011/6/9 8:00								
2011/6/9 10:00								
2011/6/9 12:00								
2011/6/9 14:00								
2011/6/9 16:00								
2011/6/9 18:00								
2011/6/9 20:00								
2011/6/9 22:00								
2011/6/10 0:00								

2F-4号機

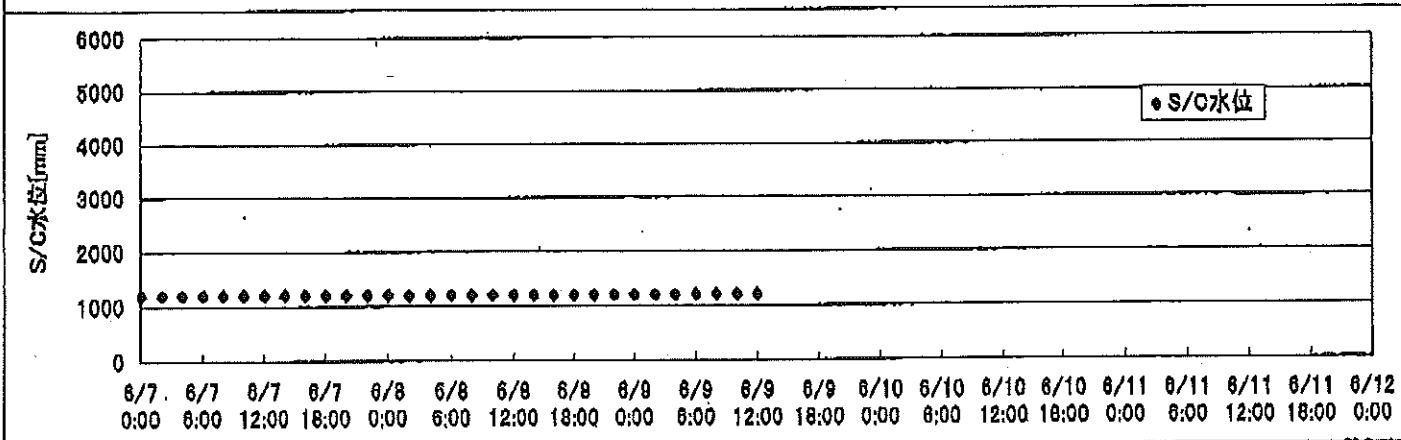
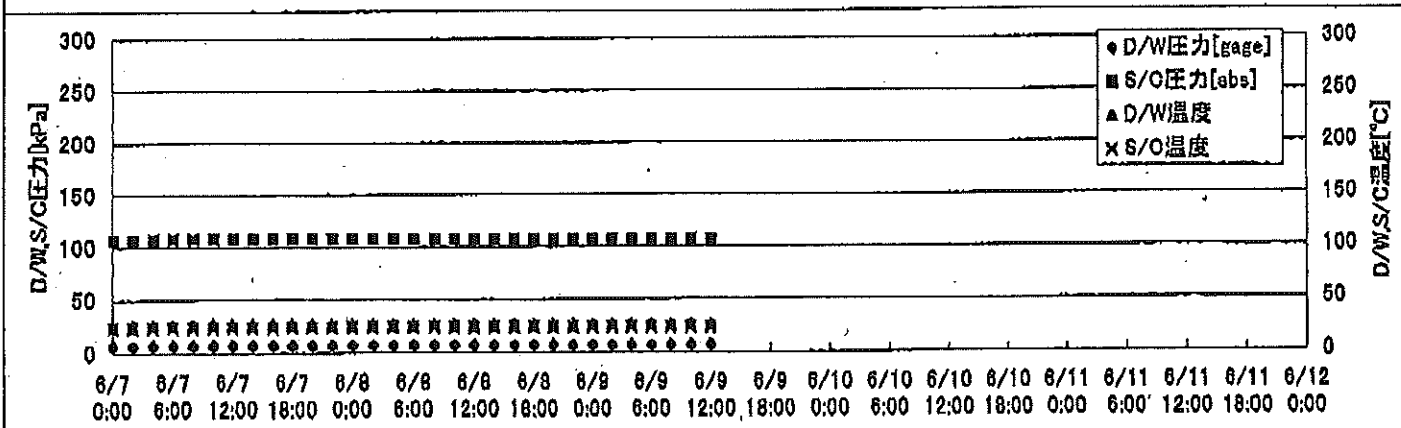
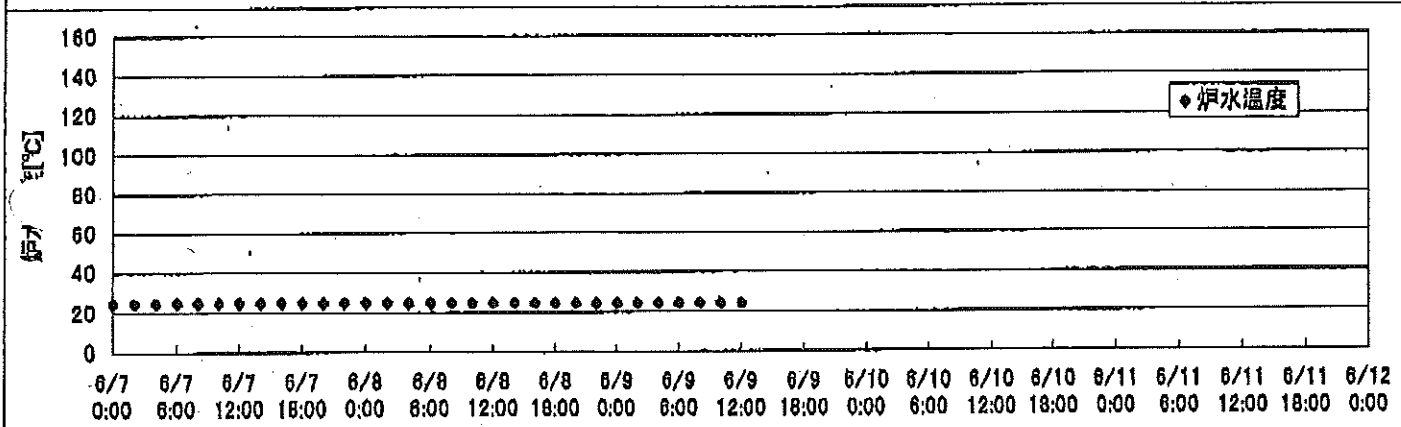
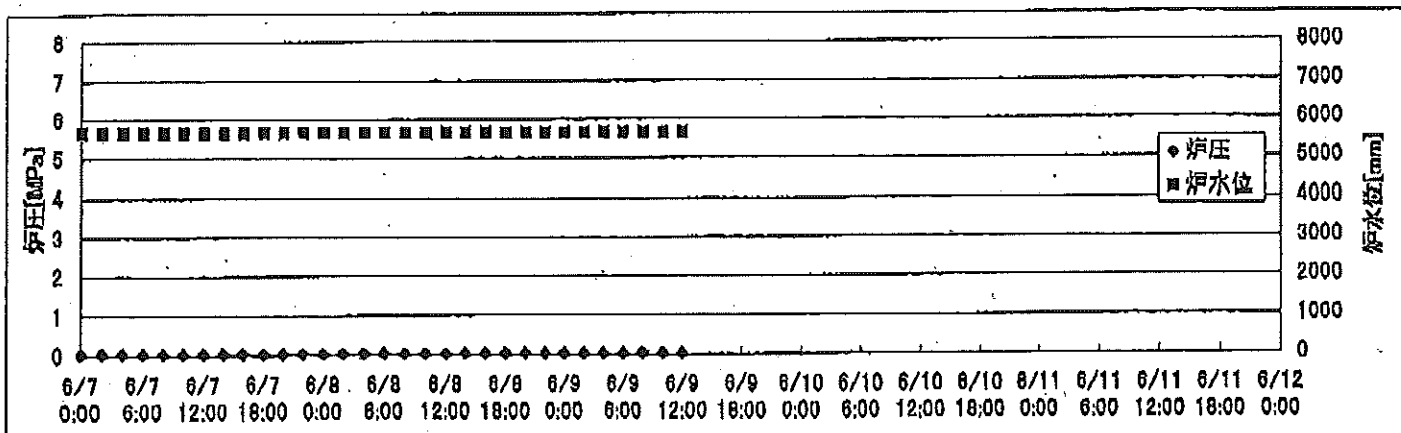
※燃料頂部(TAF)からの水位=炉水位+4200[mm]

時間	炉圧 [MPa (gage)]	炉水位 [mm] 停止時	炉水温度[°C]	D/W圧力 [kPa(gage)]	D/W温度 [°C]	S/C圧力 [kPa(abs)]	S/C水位 [mm]	S/C温度 [°C]
2011/6/7 0:00	0.06	4589	27.1	6	28.9	106	2000	28
2011/6/7 2:00	0.06	4589	27.2	6	28.7	106	2000	28
2011/6/7 4:00	0.06	4589	27.3	6	28.7	106	2000	28
2011/6/7 6:00	0.06	4589	27.3	6	28.7	106	2000	28
2011/6/7 8:00	0.06	4589	27.2	6	28.7	106	2000	28
2011/6/7 10:00	0.06	4589	27.1	6	29.0	106	2000	28
2011/6/7 12:00	0.06	4000	27.1	6	29.0	106	2000	28
2011/6/7 14:00	0.06	4050	27.2	6	29.1	106	2000	28
2011/6/7 16:00	0.06	4050	27.2	6	28.7	106	2000	28
2011/6/7 18:00	0.06	4050	27.4	6	29.0	106	2000	28
2011/6/7 20:00	0.06	4050	27.3	6	29.2	106	2000	28
2011/6/7 22:00	0.07	4050	27.1	6	29.1	106	2000	28
2011/6/8 0:00	0.06	4000	27.0	6	29.1	106	2000	28
2011/6/8 2:00	0.06	4000	26.7	6	29.1	106	2000	28
2011/6/8 4:00	0.06	4000	26.6	6	29.1	106	2000	28
2011/6/8 6:00	0.06	4000	26.5	6	28.8	106	2000	28
2011/6/8 8:00	0.06	4000	26.3	6	28.5	106	2000	28
2011/6/8 10:00	0.06	4000	26.2	6	28.9	106	2000	28
2011/6/8 12:00	0.06	4050	27.0	6	29.2	106	2000	28
2011/6/8 14:00	0.07	4050	27.9	6	29.2	106	2000	28
2011/6/8 16:00	0.07	4050	28.6	6	29.0	106	2000	28
2011/6/8 18:00	0.07	4050	28.6	6	29.0	106	2000	28
2011/6/8 20:00	0.07	4050	29.2	6	28.7	106	2000	28
2011/6/8 22:00	0.07	4150	29.3	6	28.9	106	2000	28
2011/6/9 0:00	0.07	4000	29.5	6	29.0	106	2000	28
2011/6/9 2:00	0.06	4050	29.5	6	28.7	106	2000	28
2011/6/9 4:00	0.06	4000	29.5	6	28.7	106	2000	28
2011/6/9 6:00	0.06	4000	29.5	6	28.9	106	2000	28
2011/6/9 8:00								
2011/6/9 10:00								
2011/6/9 12:00								
2011/6/9 14:00								
2011/6/9 16:00								
2011/6/9 18:00								
2011/6/9 20:00								
2011/6/9 22:00								
2011/6/10 0:00								

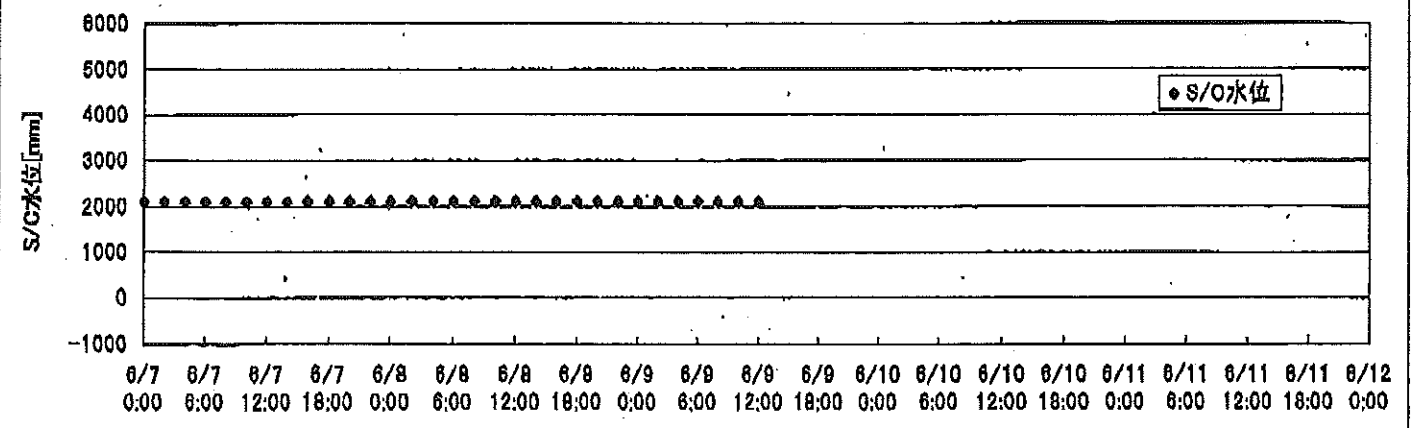
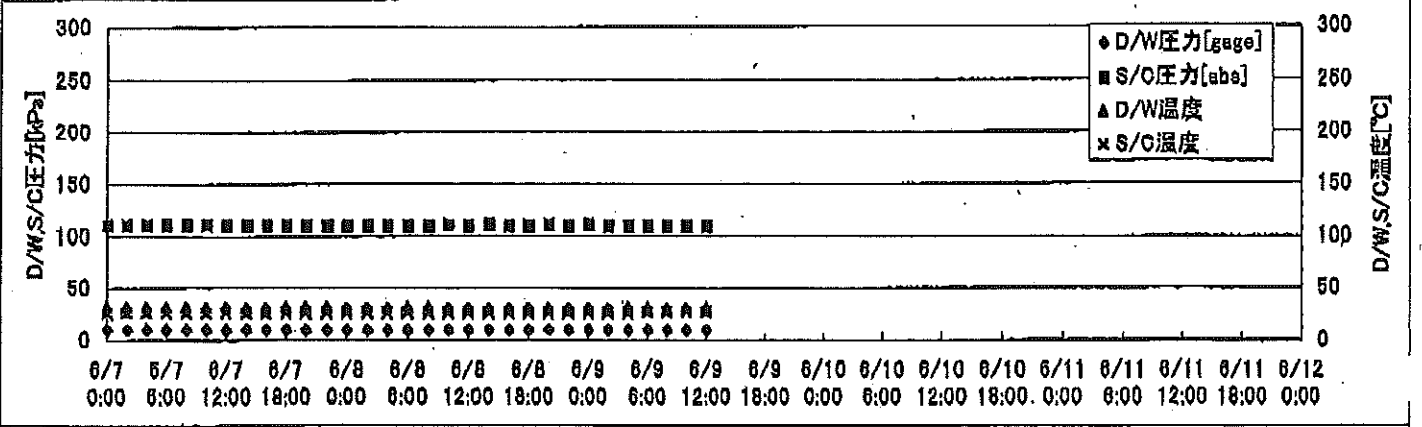
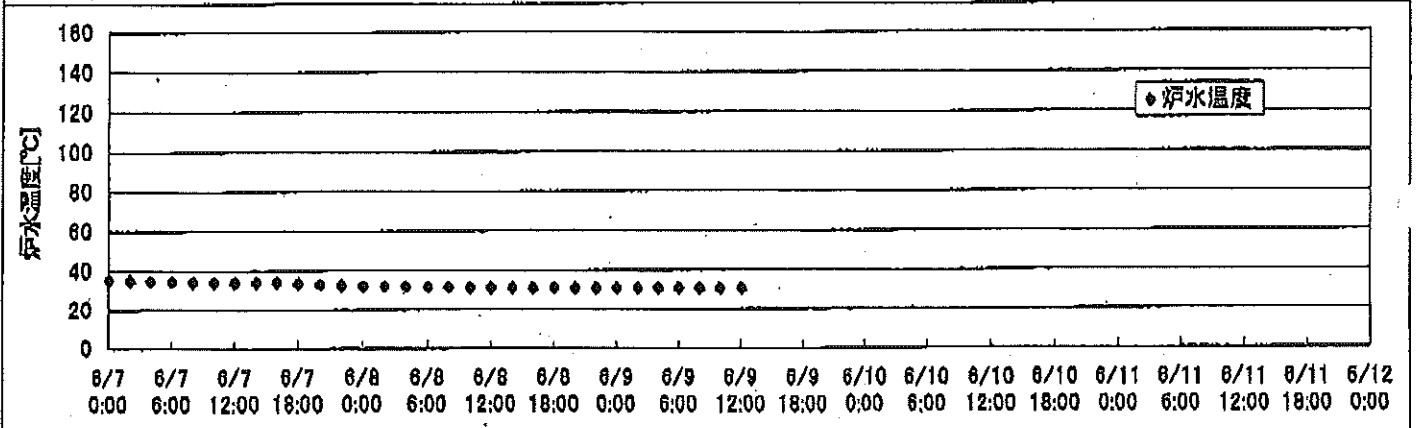
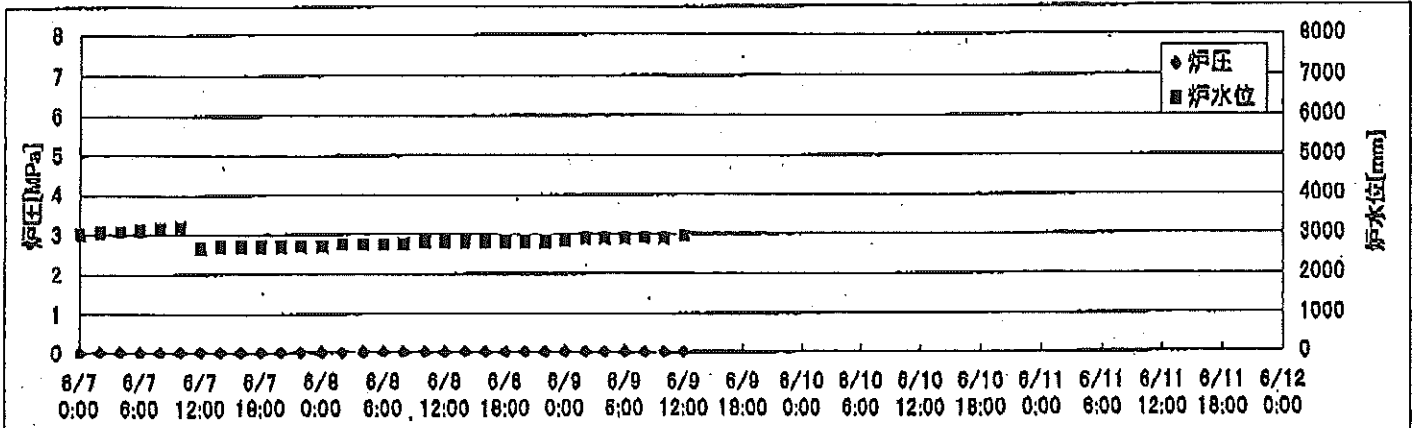
2F-1号機



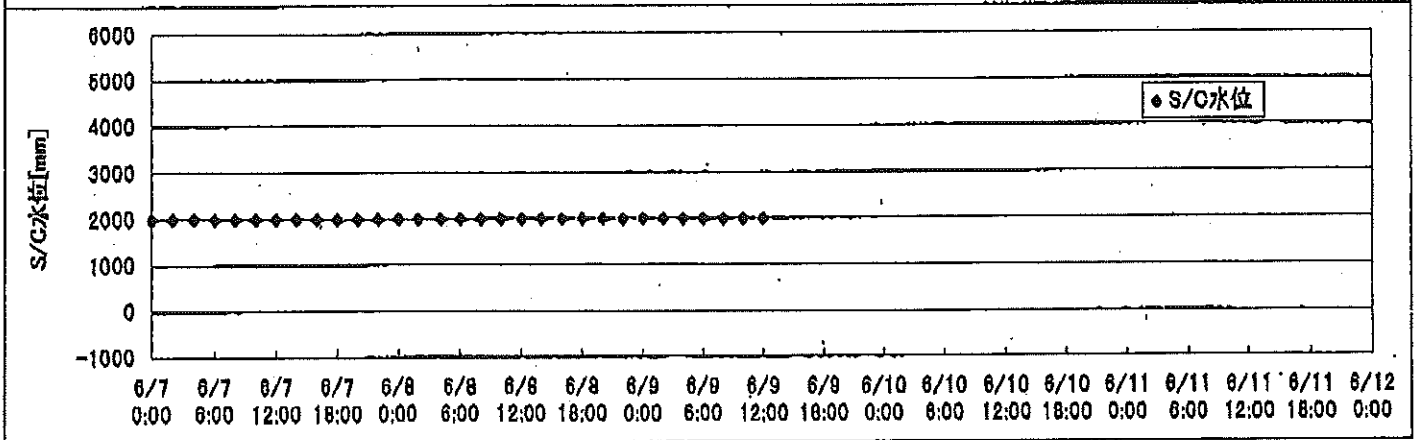
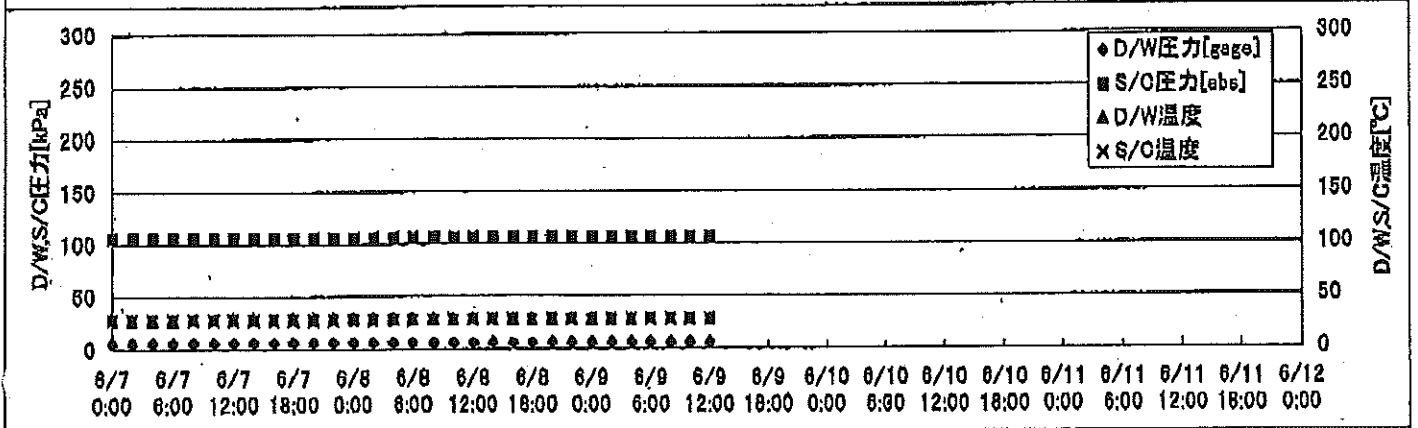
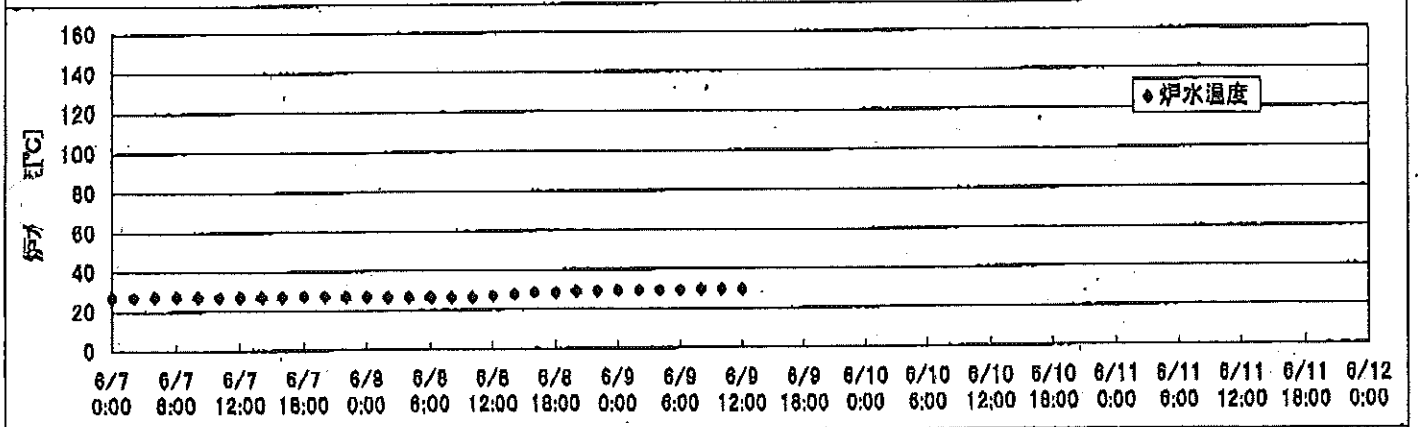
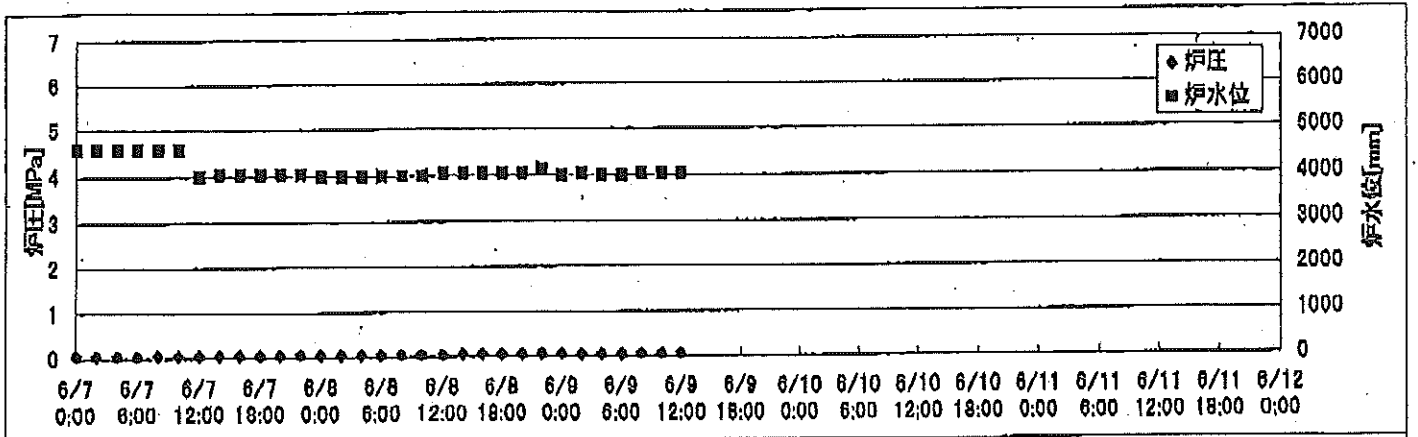
2F-2号機



2F-3号機



2F-4号機



2F-1号機

※燃料頂部(TAF)からの水位=炉水位+4200[mm]

時間	炉圧 [MPa (gage)]	炉水位 [mm] 停止時	炉水温度[°C]	D/W圧力 [kPa(gage)]	D/W温度 [°C]	S/C圧力 [kPa(abs)]	S/C水位 [mm]	S/C温度 [°C]
2011/6/7 12:00	0.05	5700	24.0	4	25.8	105	1960	24
2011/6/7 14:00	0.05	5700	24.0	4	25.8	105	1959	24
2011/6/7 16:00	0.05	5700	24.0	4	25.8	105	1960	24
2011/6/7 18:00	0.05	5700	24.0	4	25.8	105	1960	24
2011/6/7 20:00	0.05	5700	24.0	4	25.8	105	1960	24
2011/6/7 22:00	0.05	5700	24.0	4	25.8	105	1960	24
2011/6/8 0:00	0.05	5700	24.0	4	25.8	105	1960	24
2011/6/8 2:00	0.05	5700	24.0	4	25.8	105	1960	24
2011/6/8 4:00	0.05	5700	24.0	4	25.7	105	1960	24
2011/6/8 6:00	0.05	5700	23.9	4	25.8	105	1960	24
2011/6/8 8:00	0.05	5700	23.8	4	25.8	105	1960	24
2011/6/8 10:00	0.05	5700	23.8	4	25.8	105	1958	24
2011/6/8 12:00	0.05	5700	23.7	4	25.8	105	1960	24
2011/6/8 14:00	0.05	5700	23.7	4	25.8	105	1958	24
2011/6/8 16:00	0.05	5700	23.7	4	25.8	105	1959	24
2011/6/8 18:00	0.05	5700	23.7	4	25.8	105	1958	24
2011/6/8 20:00	0.05	5700	23.6	4	25.7	105	1959	24
2011/6/8 22:00	0.05	5700	23.6	4	25.8	105	1960	23
2011/6/9 0:00	0.05	5700	23.5	4	25.8	105	1958	23
2011/6/9 2:00	0.05	5700	23.5	4	25.7	105	1959	23
2011/6/9 4:00	0.05	5700	23.5	4	25.8	105	1959	23
2011/6/9 6:00	0.05	5700	23.4	4	25.8	105	1958	23
2011/6/9 8:00	0.05	5700	23.4	4	25.8	105	1959	23
2011/6/9 10:00	0.05	5700	23.4	4	25.8	105	1960	23
2011/6/9 12:00	0.05	5700	23.4	4	25.8	105	1959	23
2011/6/9 14:00								
2011/6/9 16:00								
2011/6/9 18:00								
2011/6/9 20:00								
2011/6/9 22:00								
2011/6/10 0:00								
2011/6/10 2:00								
2011/6/10 4:00								
2011/6/10 6:00								
2011/6/10 8:00								
2011/6/10 10:00								
2011/6/10 12:00								

2F-2号機

※燃料頂部(TAF)からの水位=炉水位+4200[mm]

時間	炉圧 [MPa (gage)]	炉水位 [mm] 停止時	炉水温度[°C]	D/W圧力 [kPa(gage)]	D/W温度 [°C]	S/C圧力 [kPa(abs)]	S/C水位 [mm]	S/C温度 [°C]
2011/6/7 12:00	0.03	5650	24.7	7	26.2	107	1200	24
2011/6/7 14:00	0.04	5650	24.7	7	26.2	107	1200	24
2011/6/7 16:00	0.03	5650	24.7	7	26.2	107	1200	24
2011/6/7 18:00	0.03	5650	24.7	7	26.2	107	1200	24
2011/6/7 20:00	0.03	5650	24.7	7	26.2	107	1200	24
2011/6/7 22:00	0.03	5650	24.7	7	26.2	107	1200	24
2011/6/8 0:00	0.03	5650	24.7	7	26.2	107	1200	24
2011/6/8 2:00	0.04	5650	24.6	7	26.2	107	1200	24
2011/6/8 4:00	0.03	5650	24.6	7	26.2	107	1200	24
2011/6/8 6:00	0.04	5650	24.6	7	26.3	107	1200	24
2011/6/8 8:00	0.03	5650	24.5	7	26.3	107	1200	24
2011/6/8 10:00	0.03	5650	24.5	7	26.3	107	1200	24
2011/6/8 12:00	0.03	5650	24.5	7	26.2	107	1200	24
2011/6/8 14:00	0.04	5650	24.4	7	26.0	107	1200	24
2011/6/8 16:00	0.04	5650	24.3	7	26.0	107	1200	24
2011/6/8 18:00	0.04	5650	24.3	7	26.0	107	1200	24
2011/6/8 20:00	0.04	5650	24.3	7	26.0	107	1200	24
2011/6/8 22:00	0.04	5650	24.2	7	26.2	107	1200	24
2011/6/9 0:00	0.03	5650	24.2	7	26.2	107	1200	24
2011/6/9 2:00	0.03	5650	24.2	7	26.2	107	1200	24
2011/6/9 4:00	0.03	5650	24.2	7	26.2	107	1200	24
2011/6/9 6:00	0.03	5650	24.1	7	26.2	107	1200	24
2011/6/9 8:00	0.04	5650	24.1	7	26.2	107	1200	24
2011/6/9 10:00	0.04	5650	24.1	7	26.0	107	1200	24
2011/6/9 12:00	0.03	5650	24.1	7	26.0	107	1200	23
2011/6/9 14:00								
2011/6/9 16:00								
2011/6/9 18:00								
2011/6/9 20:00								
2011/6/9 22:00								
2011/6/10 0:00								
2011/6/10 2:00								
2011/6/10 4:00								
2011/6/10 6:00								
2011/6/10 8:00								
2011/6/10 10:00								
2011/6/10 12:00								

2F-3号機

※燃料頂部(TAF)からの水位=炉水位+4200[mm]

時間	炉圧 [MPa (gage)]	炉水位 [mm] 停止時	炉水温度[°C]	D/W圧力 [kPa(gage)]	D/W温度 [°C]	S/C圧力 [kPa(abs)]	S/C水位 [mm]	S/C温度 [°C]
2011/6/7 12:00	0.01	2650	34.1	10	31.4	110	2100	26
2011/6/7 14:00	0.01	2700	34.1	10	31.4	110	2100	26
2011/6/7 16:00	0.01	2700	34.1	10	31.4	110	2100	26
2011/6/7 18:00	0.01	2700	33.5	10	31.3	110	2100	26
2011/6/7 20:00	0.01	2700	33.0	10	31.3	110	2100	26
2011/6/7 22:00	0.01	2700	32.6	10	31.2	110	2100	26
2011/6/8 0:00	0.01	2700	32.2	10	31.1	110	2100	26
2011/6/8 2:00	0.01	2750	32.0	10	31.0	110	2100	26
2011/6/8 4:00	0.01	2750	31.9	10	31.0	110	2100	26
2011/6/8 6:00	0.01	2750	31.7	10	31.0	110	2100	26
2011/6/8 8:00	0.01	2750	31.5	10	30.9	110	2100	26
2011/6/8 10:00	0.01	2800	31.4	10	30.7	111	2100	26
2011/6/8 12:00	0.01	2800	31.3	10	30.7	110	2100	26
2011/6/8 14:00	0.01	2800	31.2	10	30.7	111	2100	26
2011/6/8 16:00	0.01	2800	31.2	10	30.7	110	2100	26
2011/6/8 18:00	0.01	2800	31.2	10	30.7	110	2100	26
2011/6/8 20:00	0.01	2800	31.0	10	30.7	111	2100	26
2011/6/8 22:00	0.01	2800	31.0	10	30.6	110	2100	26
2011/6/9 0:00	0.01	2850	30.9	10	30.6	111	2100	26
2011/6/9 2:00	0.01	2900	30.9	10	30.6	110	2100	26
2011/6/9 4:00	0.01	2900	30.9	10	30.6	110	2100	26
2011/6/9 6:00	0.01	2900	30.9	10	30.6	110	2100	27
2011/6/9 8:00	0.01	2900	30.9	10	30.5	110	2100	27
2011/6/9 10:00	0.01	2900	30.8	10	30.4	110	2100	27
2011/6/9 12:00	0.01	2950	-30.8	10	30.6	110	2100	27
2011/6/9 14:00								
2011/6/9 16:00								
2011/6/9 18:00								
2011/6/9 20:00								
2011/6/9 22:00								
2011/6/10 0:00								
2011/6/10 2:00								
2011/6/10 4:00								
2011/6/10 6:00								
2011/6/10 8:00								
2011/6/10 10:00								
2011/6/10 12:00								

2F-4号機

※燃料頂部(TAF)からの水位=炉水位+4200[mm]

時間	炉圧 [MPa (gage)]	炉水位 [mm] 停止時	炉水温度[°C]	D/W圧力 [kPa(gage)]	D/W温度 [°C]	S/C圧力 [kPa(abs)]	S/C水位 [mm]	S/C温度 [°C]
2011/6/7 12:00	0.06	4000	27.1	6	29.0	106	2000	28
2011/6/7 14:00	0.06	4050	27.2	6	29.1	106	2000	28
2011/6/7 16:00	0.06	4050	27.2	6	28.7	106	2000	28
2011/6/7 18:00	0.06	4050	27.4	6	29.0	106	2000	28
2011/6/7 20:00	0.06	4050	27.3	6	29.2	106	2000	28
2011/6/7 22:00	0.07	4050	27.1	6	29.1	106	2000	28
2011/6/8 0:00	0.06	4000	27.0	6	29.1	106	2000	28
2011/6/8 2:00	0.06	4000	26.7	6	29.1	106	2000	28
2011/6/8 4:00	0.06	4000	26.6	6	29.1	106	2000	28
2011/6/8 6:00	0.06	4000	26.5	6	28.8	106	2000	28
2011/6/8 8:00	0.06	4000	26.3	6	28.5	106	2000	28
2011/6/8 10:00	0.06	4000	26.2	6	28.9	106	2000	28
2011/6/8 12:00	0.06	4050	27.0	6	29.2	106	2000	28
2011/6/8 14:00	0.07	4050	27.9	6	29.2	106	2000	28
2011/6/8 16:00	0.07	4050	28.6	6	29.0	106	2000	28
2011/6/8 18:00	0.07	4050	28.6	6	29.0	106	2000	28
2011/6/8 20:00	0.07	4050	29.2	6	28.7	106	2000	28
2011/6/8 22:00	0.07	4150	29.3	6	28.9	106	2000	28
2011/6/9 0:00	0.07	4000	29.5	6	29.0	106	2000	28
2011/6/9 2:00	0.06	4050	29.5	6	28.7	106	2000	28
2011/6/9 4:00	0.06	4000	29.5	6	28.7	106	2000	28
2011/6/9 6:00	0.06	4000	29.5	6	28.9	106	2000	28
2011/6/9 8:00	0.07	4050	29.6	6	29.2	106	2000	28
2011/6/9 10:00	0.07	4050	29.6	6	29.0	106	2000	28
2011/6/9 12:00	0.07	4050	29.6	6	28.7	106	2000	28
2011/6/9 14:00								
2011/6/9 16:00								
2011/6/9 18:00								
2011/6/9 20:00								
2011/6/9 22:00								
2011/6/10 0:00								
2011/6/10 2:00								
2011/6/10 4:00								
2011/6/10 6:00								
2011/6/10 8:00								
2011/6/10 10:00								
2011/6/10 12:00								