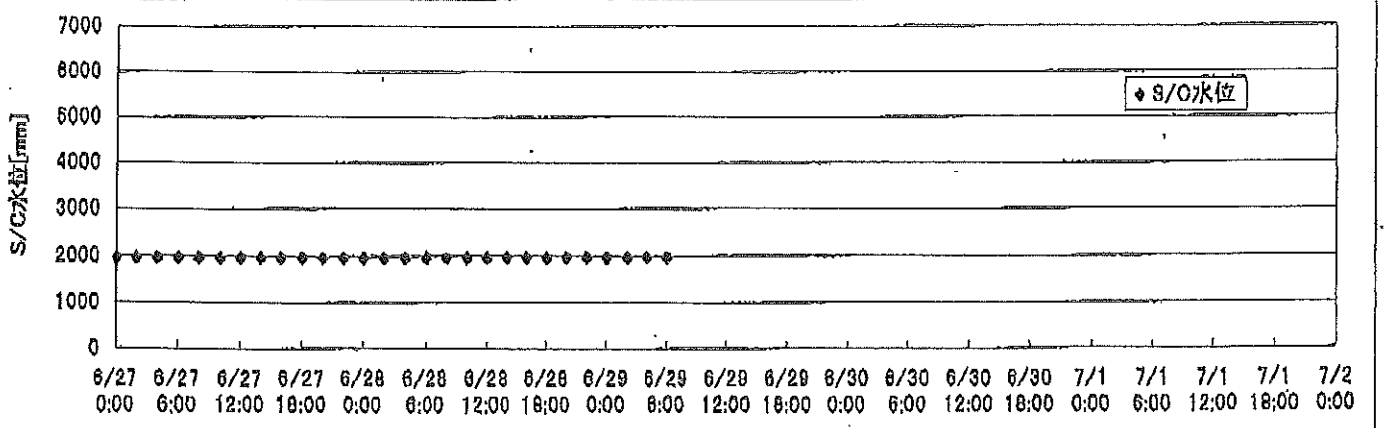
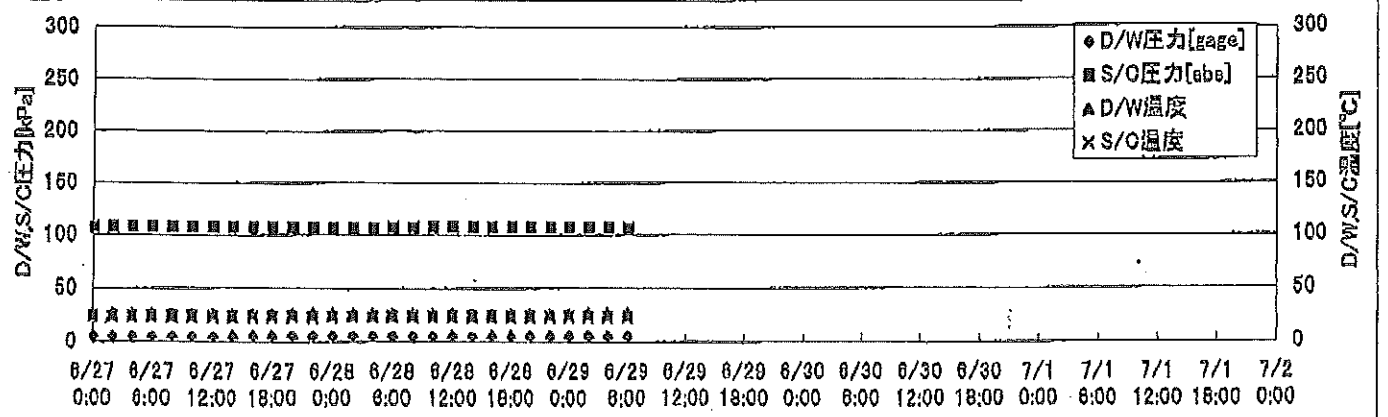
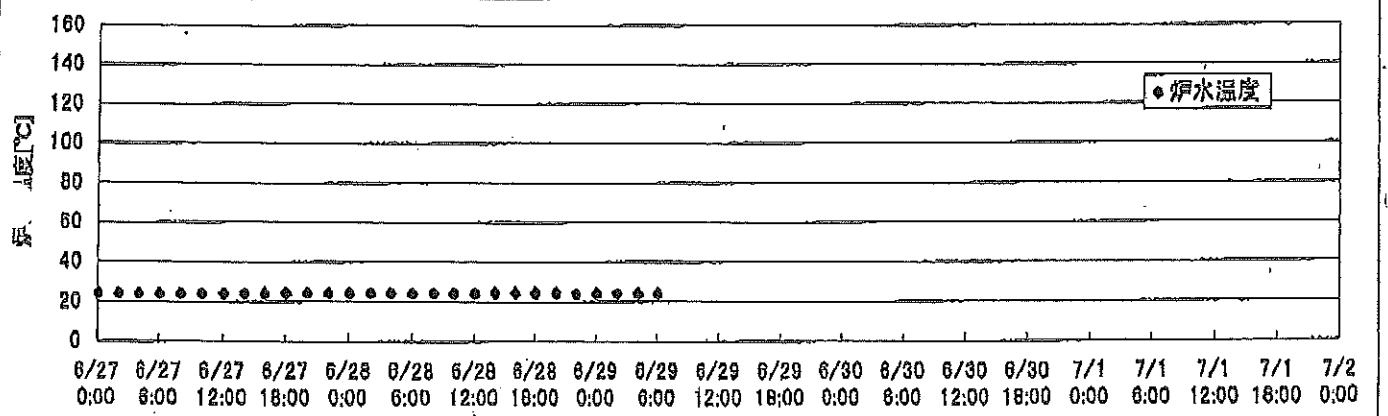
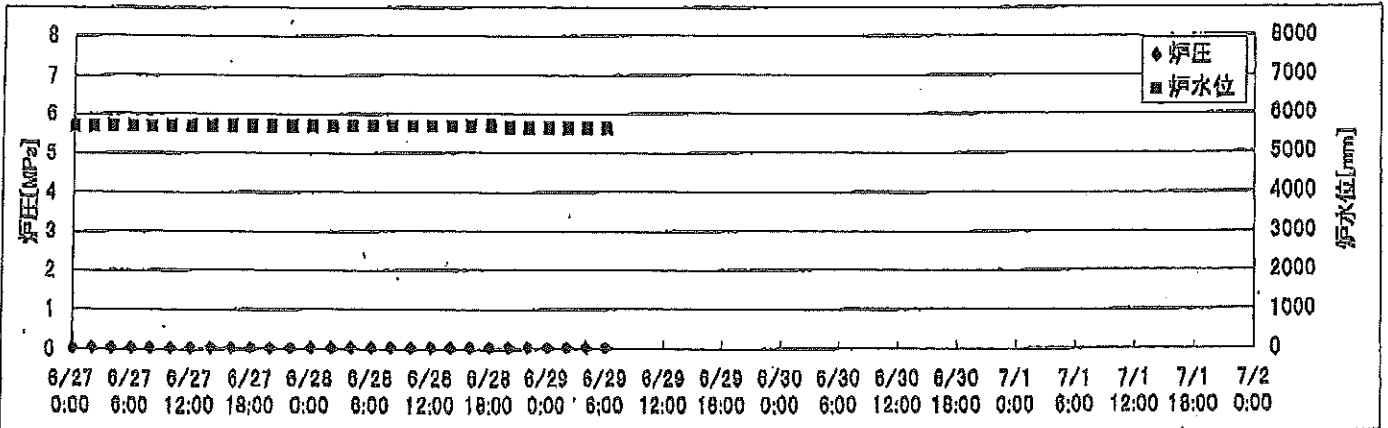
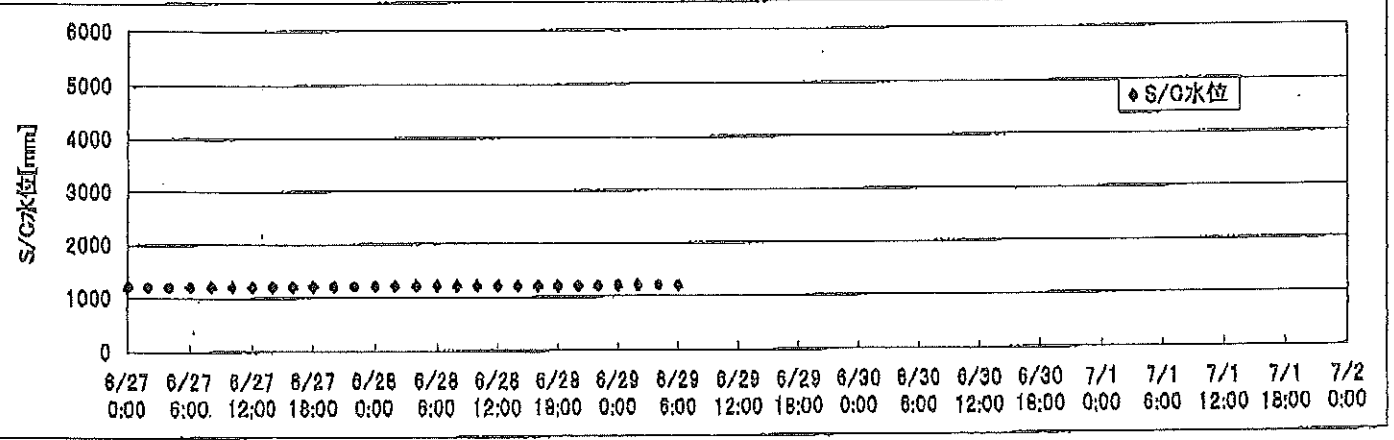
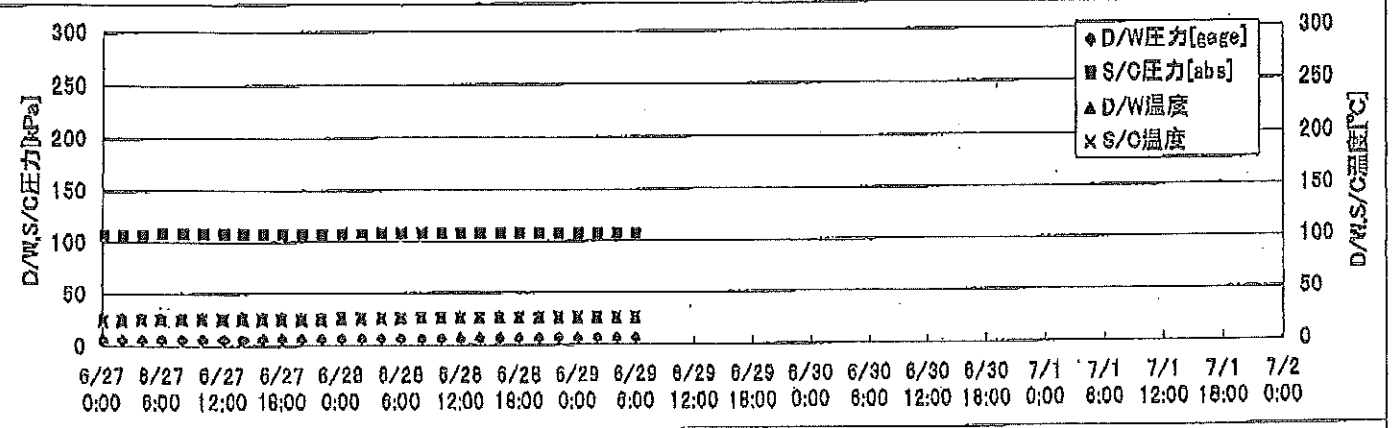
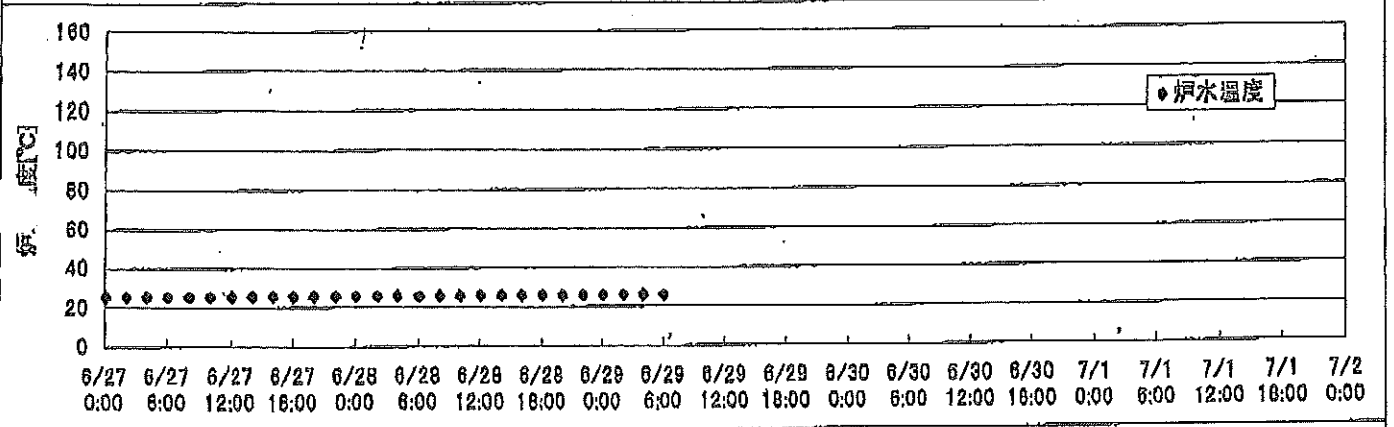
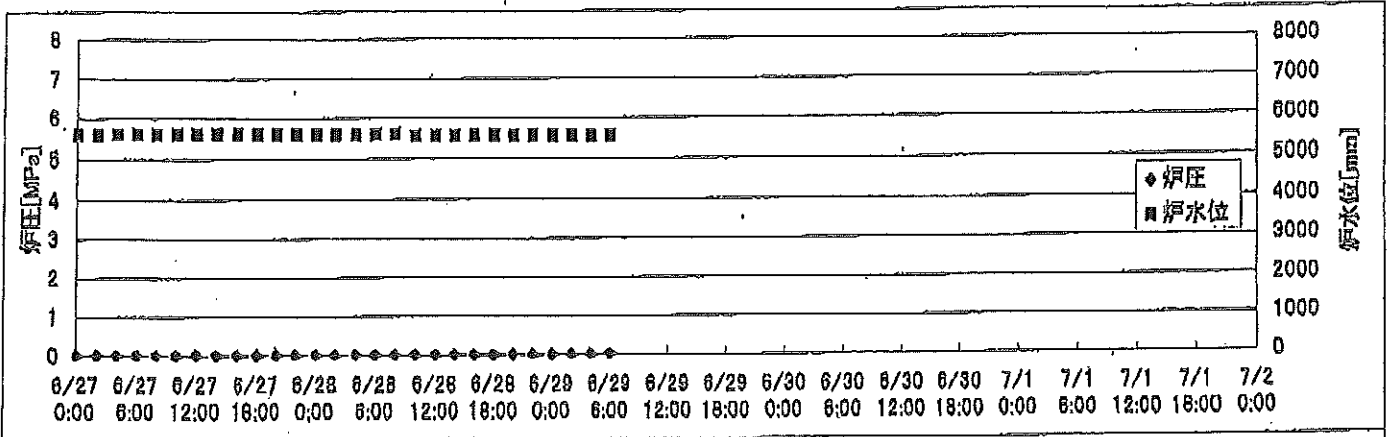


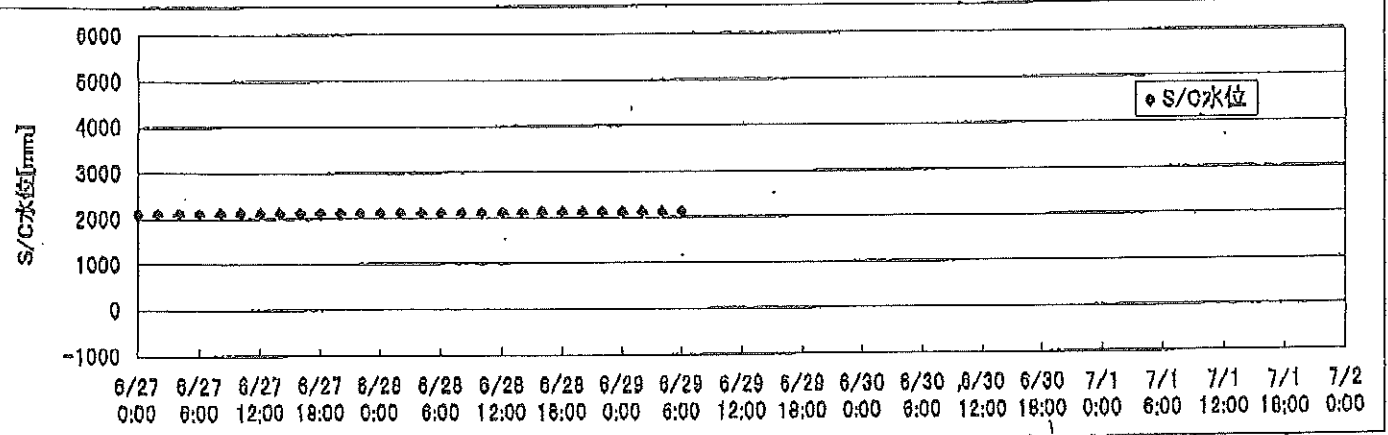
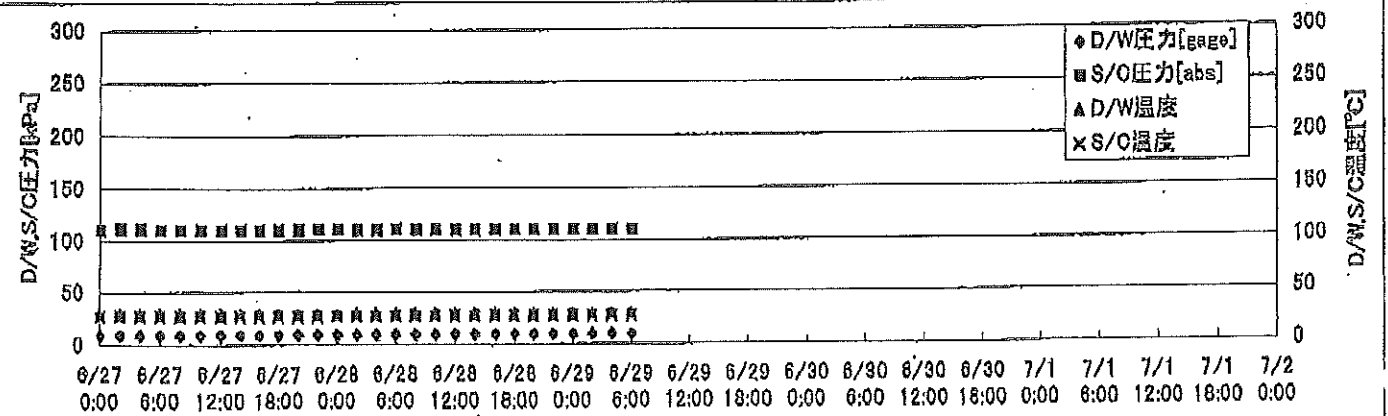
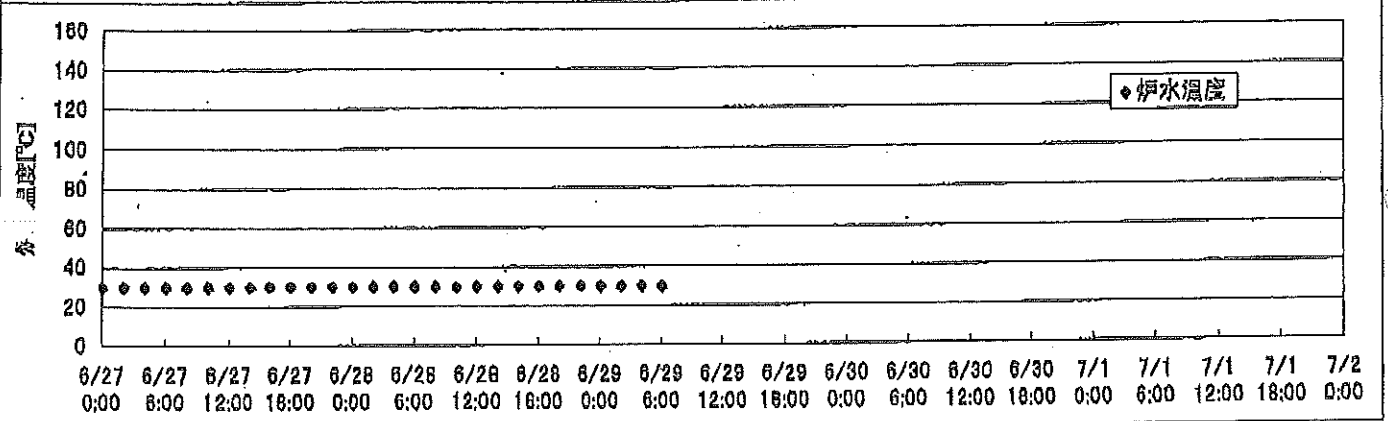
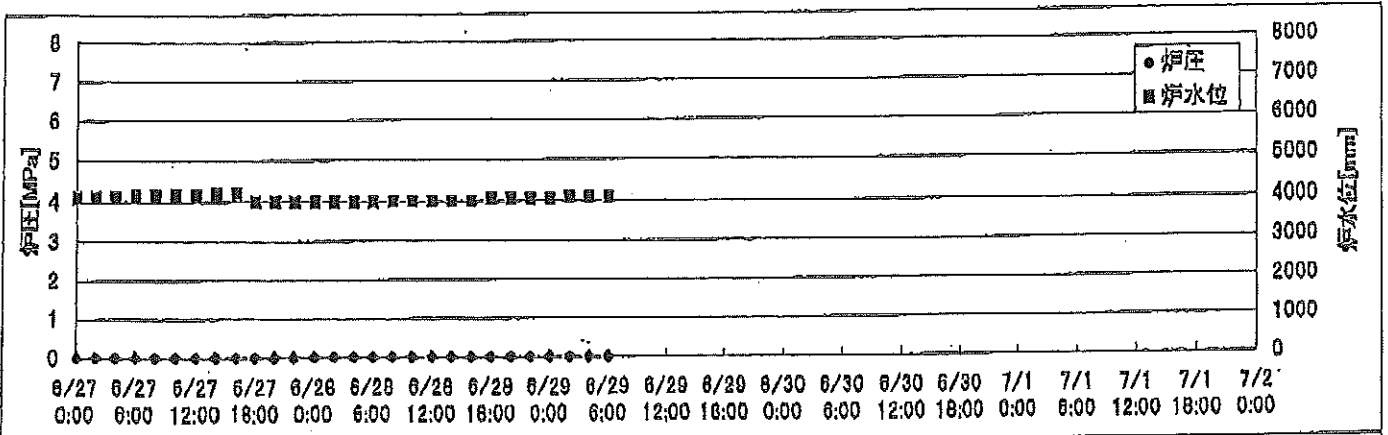
# 2F-1号機



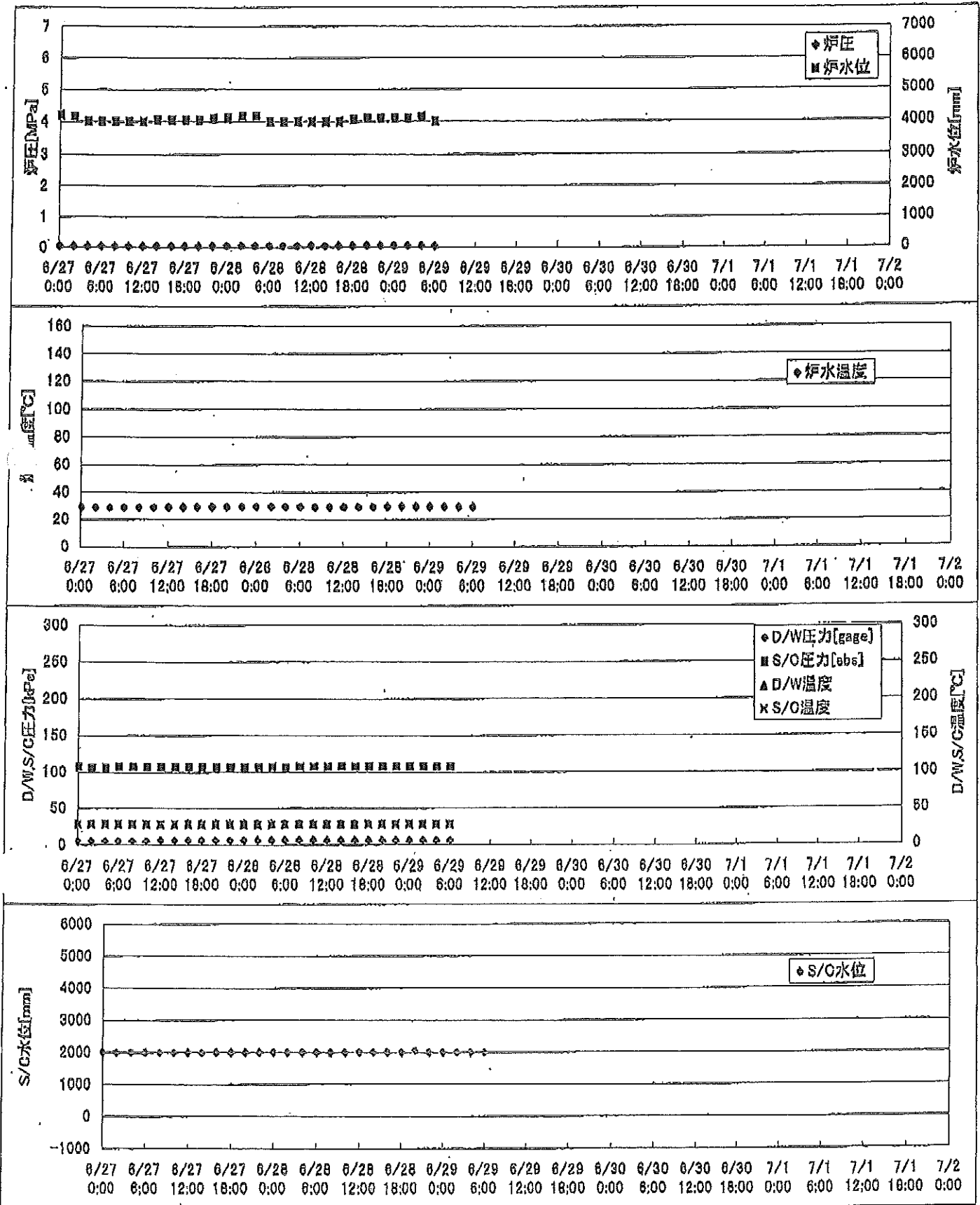
# 2F-2号機



2F-3号機



2F-4号機



## 2F-1号機

※燃料頂部(TAF)からの水位=炉水位+4200[mm]

時間	炉圧 [MPa (gage)]	炉水位 [mm] 停止時	炉水温度[°C]	D/W圧力 [kPa(gage)]	D/W温度 [°C]	S/G圧力 [kPa(abs)]	S/G水位 [mm]	S/C温度 [°C]
2011/6/27 0:00	0.05	5700	24.2	5	26.2	107	1959	24
2011/6/27 2:00	0.05	5700	24.2	5	26.2	107	1959	24
2011/6/27 4:00	0.05	5700	24.2	5	26.2	107	1959	24
2011/6/27 6:00	0.05	5700	24.2	5	26.2	107	1959	24
2011/6/27 8:00	0.05	5700	24.1	5	26.2	107	1959	24
2011/6/27 10:00	0.05	5700	24.2	5	26.2	107	1959	24
2011/6/27 12:00	0.05	5700	24.2	5	26.2	107	1958	24
2011/6/27 14:00	0.05	5700	24.2	5	26.2	107	1958	24
2011/6/27 16:00	0.05	5700	24.2	5	26.2	107	1958	24
2011/6/27 18:00	0.05	5700	24.3	5	26.2	107	1958	24
2011/6/27 20:00	0.05	5700	24.3	5	26.2	107	1958	24
2011/6/27 22:00	0.05	5700	24.3	5	26.1	107	1958	24
2011/6/28 0:00	0.05	5700	24.3	5	26.2	107	1958	24
2011/6/28 2:00	0.05	5700	24.3	5	26.2	107	1958	24
2011/6/28 4:00	0.05	5700	24.3	5	26.2	107	1958	24
2011/6/28 6:00	0.05	5700	24.3	5	26.2	107	1958	24
2011/6/28 8:00	0.05	5700	24.3	5	26.1	107	1958	24
2011/6/28 10:00	0.05	5700	24.3	5	26.2	107	1958	24
2011/6/28 12:00	0.05	5700	24.3	5	26.3	107	1958	24
2011/6/28 14:00	0.05	5700	24.4	5	26.2	107	1958	24
2011/6/28 16:00	0.05	5700	24.4	5	26.1	107	1958	24
2011/6/28 18:00	0.05	5700	24.4	5	26.3	107	1957	24
2011/6/28 20:00	0.05	5650	24.4	5	26.2	107	1963	24
2011/6/28 22:00	0.05	5650	24.2	5	26.2	107	1963	24
2011/6/29 0:00	0.05	5650	24.1	5	26.3	107	1963	24
2011/6/29 2:00	0.05	5650	24.1	5	26.3	107	1963	24
2011/6/29 4:00	0.05	5650	24.0	5	26.3	107	1963	24
2011/6/29 6:00	0.05	5650	23.9	5	26.3	106	1963	24
2011/6/29 8:00								
2011/6/29 10:00								
2011/6/29 12:00								
2011/6/29 14:00								
2011/6/29 16:00								
2011/6/29 18:00								
2011/6/29 20:00								
2011/6/29 22:00								
2011/6/30 0:00								



# 2F-3号機

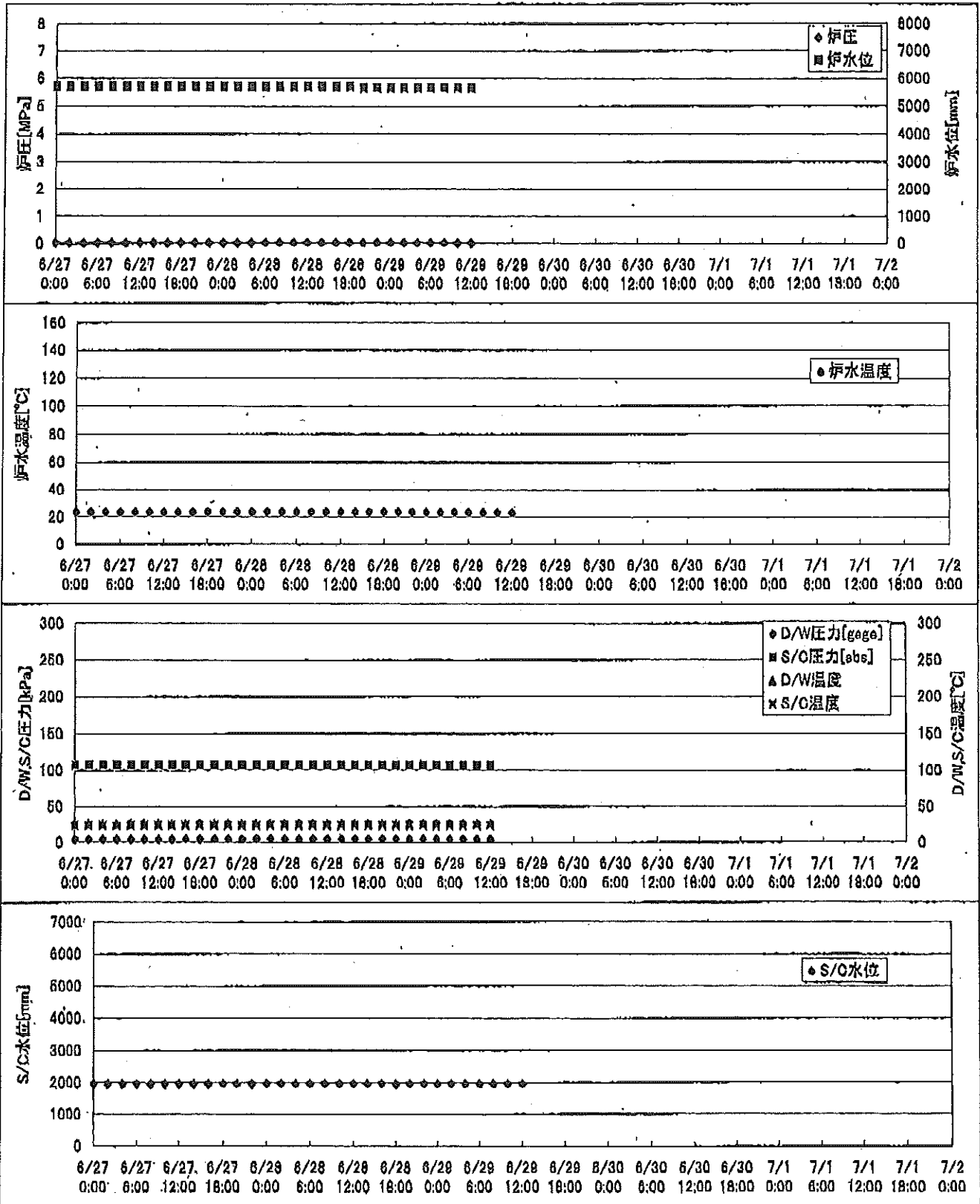
※燃料頂部(TAF)からの水位=炉水位+4200[mm]

時間	炉圧 [MPa (gage)]	炉水位 [mm] 停止時	炉水温度[°C]	D/W圧力 [kPa(gage)]	D/W温度 [°C]	S/C圧力 [kPa(abs)]	S/C水位 [mm]	S/C温度 [°C]
2011/6/27 0:00	0.02	4100	29.8	9	29.3	110	2100	27
2011/6/27 2:00	0.02	4100	29.8	9	29.3	111	2100	27
2011/6/27 4:00	0.02	4100	29.8	9	29.3	111	2100	27
2011/6/27 6:00	0.02	4150	29.8	9	29.4	110	2100	27
2011/6/27 8:00	0.02	4150	29.8	9	29.3	110	2100	27
2011/6/27 10:00	0.02	4150	29.8	9	29.3	110	2100	27
2011/6/27 12:00	0.02	4150	29.9	9	29.3	110	2100	27
2011/6/27 14:00	0.02	4200	30.0	9	29.3	110	2100	27
2011/6/27 16:00	0.02	4200	30.1	9	29.3	110	2100	27
2011/6/27 18:00	0.02	4000	30.1	9	29.4	110	2100	27
2011/6/27 20:00	0.02	4000	30.2	9	29.3	110	2100	27
2011/6/27 22:00	0.02	4000	30.1	9	29.3	111	2100	27
2011/6/28 0:00	0.02	4000	30.0	10	29.3	111	2100	27
2011/6/28 2:00	0.02	4000	30.0	10	29.4	110	2100	27
2011/6/28 4:00	0.02	4000	29.9	10	29.3	110	2100	27
2011/6/28 6:00	0.02	4000	29.8	9	29.3	111	2100	27
2011/6/28 8:00	0.02	4000	29.8	9	29.4	110	2100	27
2011/6/28 10:00	0.02	4000	29.8	9	29.4	110	2100	27
2011/6/28 12:00	0.02	4000	29.9	9	29.4	110	2100	27
2011/6/28 14:00	0.02	4000	30.0	10	29.4	110	2100	27
2011/6/28 16:00	0.02	4000	30.2	10	29.3	110	2100	27
2011/6/28 18:00	0.02	4050	30.1	10	29.3	110	2100	27
2011/6/28 20:00	0.02	4050	30.1	10	29.4	110	2100	27
2011/6/28 22:00	0.02	4050	30.1	10	29.3	110	2100	27
2011/6/29 0:00	0.02	4050	30.0	10	29.3	110	2100	27
2011/6/29 2:00	0.02	4100	29.9	10	29.3	110	2100	27
2011/6/29 4:00	0.02	4100	29.8	9	29.5	110	2100	27
<b>2011/6/29 6:00</b>	<b>0.02</b>	<b>4100</b>	<b>29.6</b>	<b>9</b>	<b>29.3</b>	<b>110</b>	<b>2100</b>	<b>27</b>
2011/6/29 8:00								
2011/6/29 10:00								
2011/6/29 12:00								
2011/6/29 14:00								
2011/6/29 16:00								
2011/6/29 18:00								
2011/6/29 20:00								
2011/6/29 22:00								
2011/6/30 0:00								

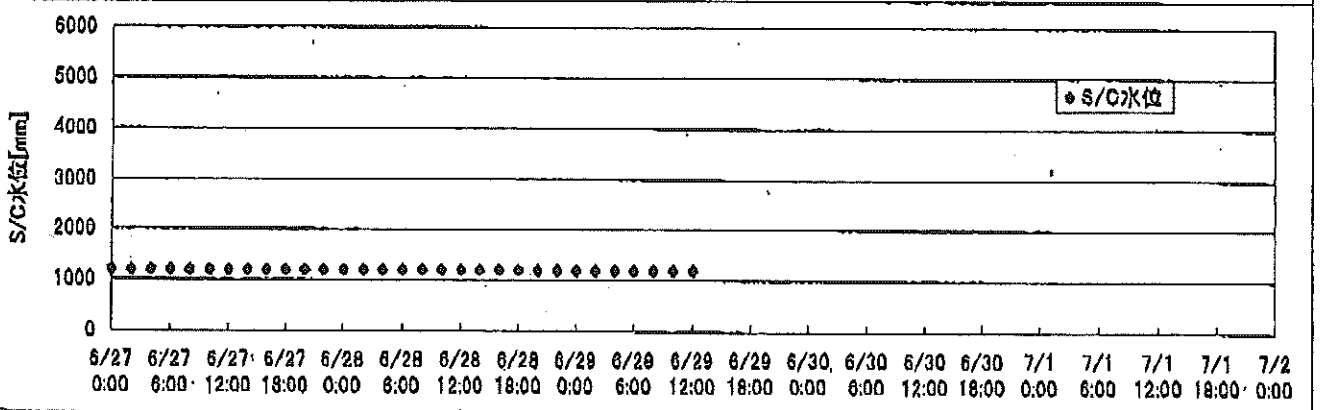
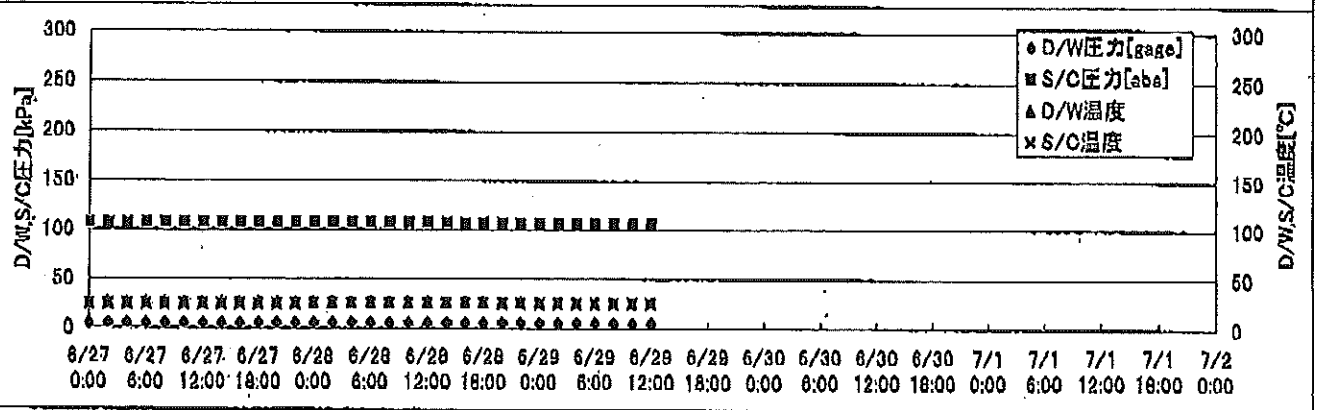
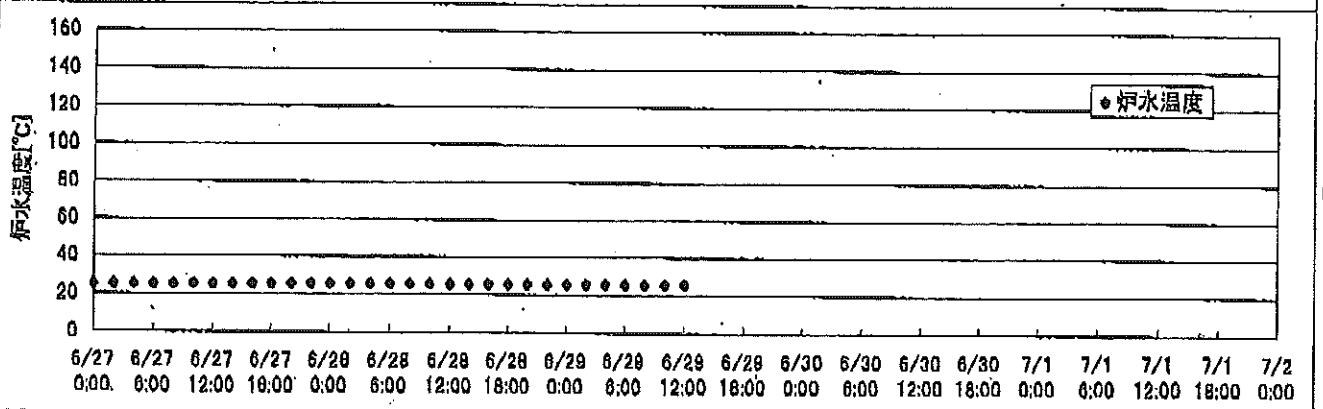
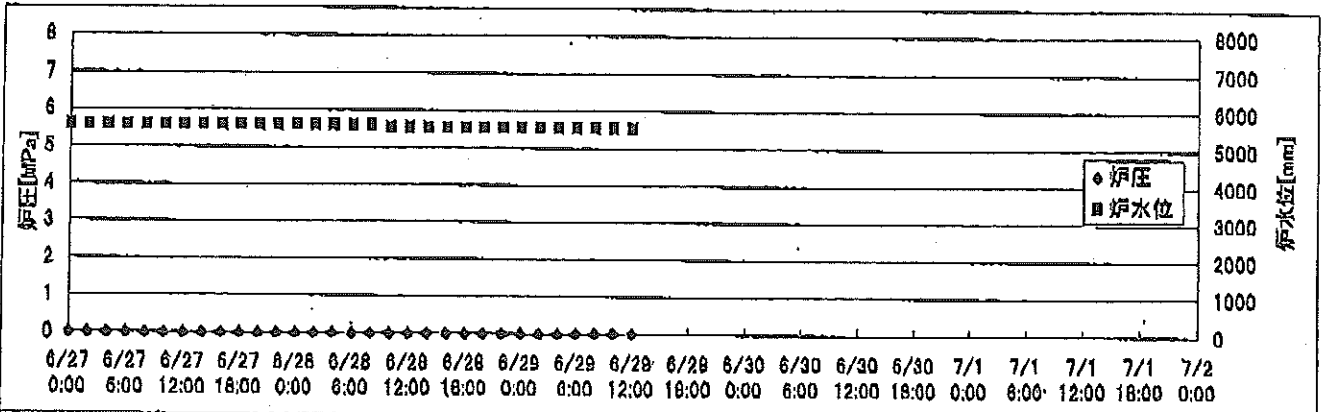




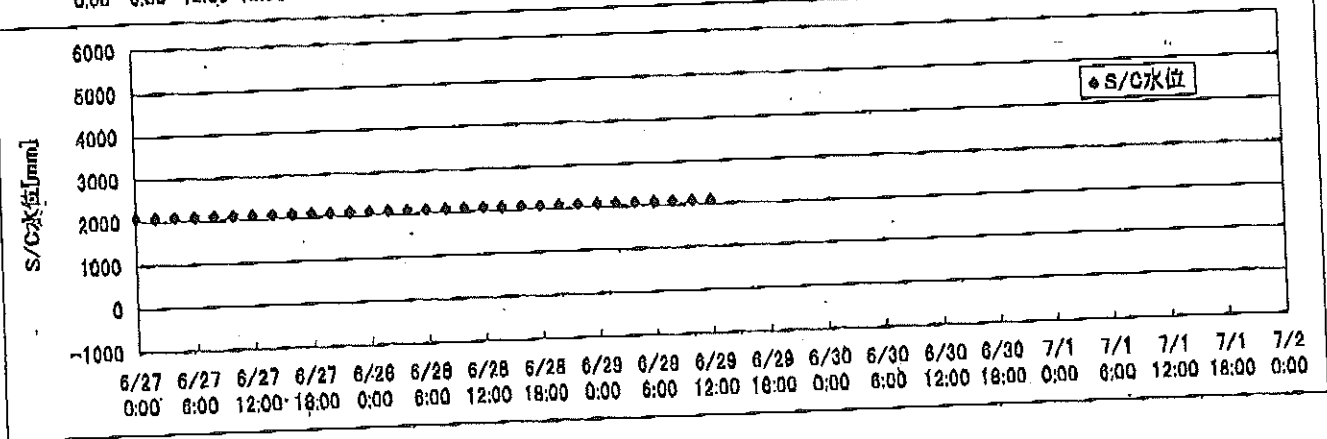
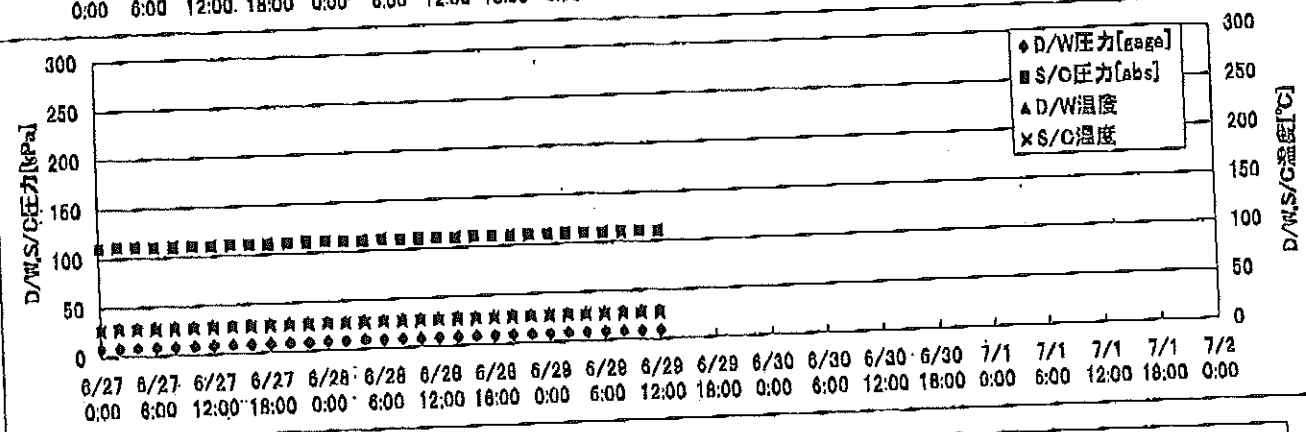
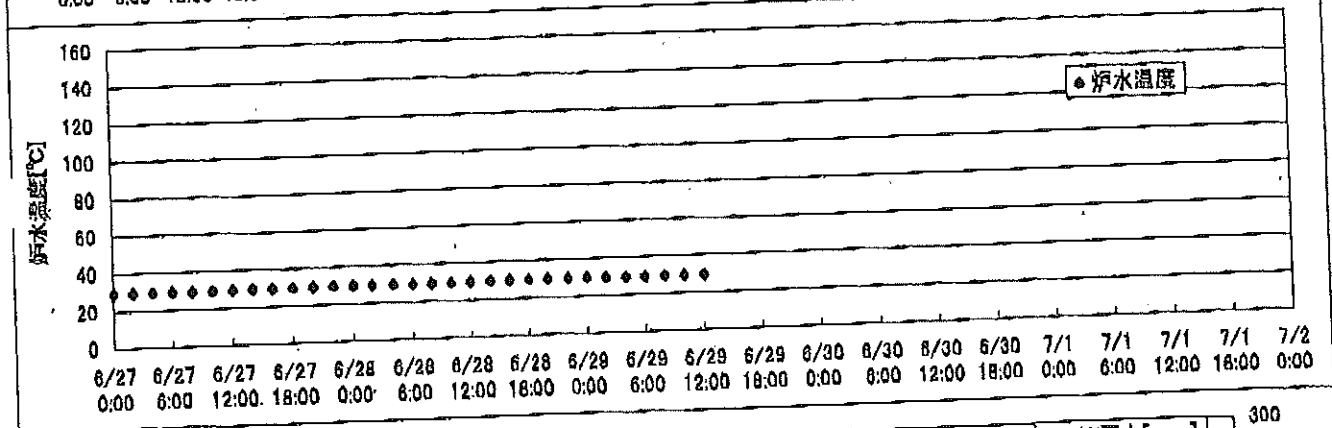
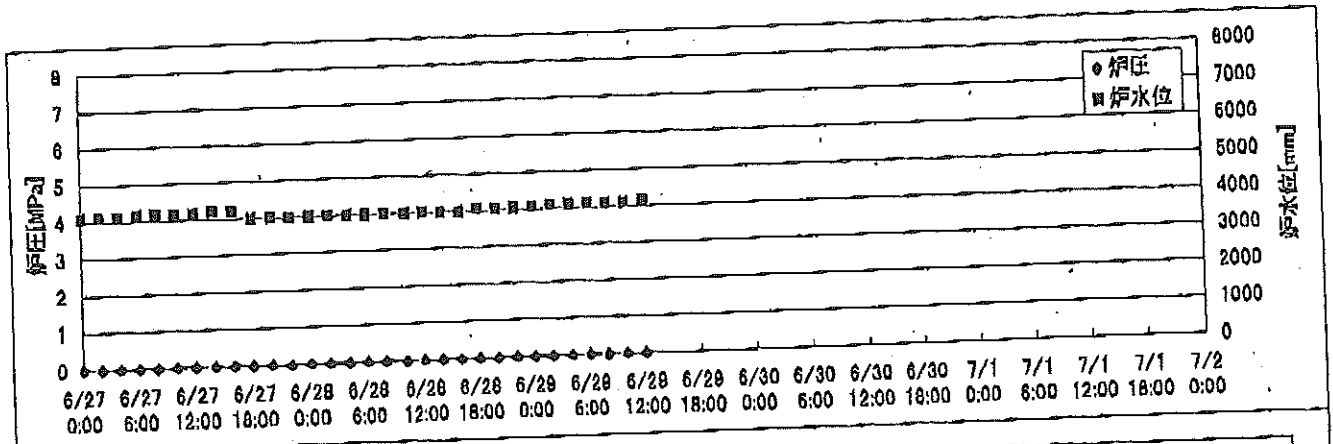
### 2F-1号機



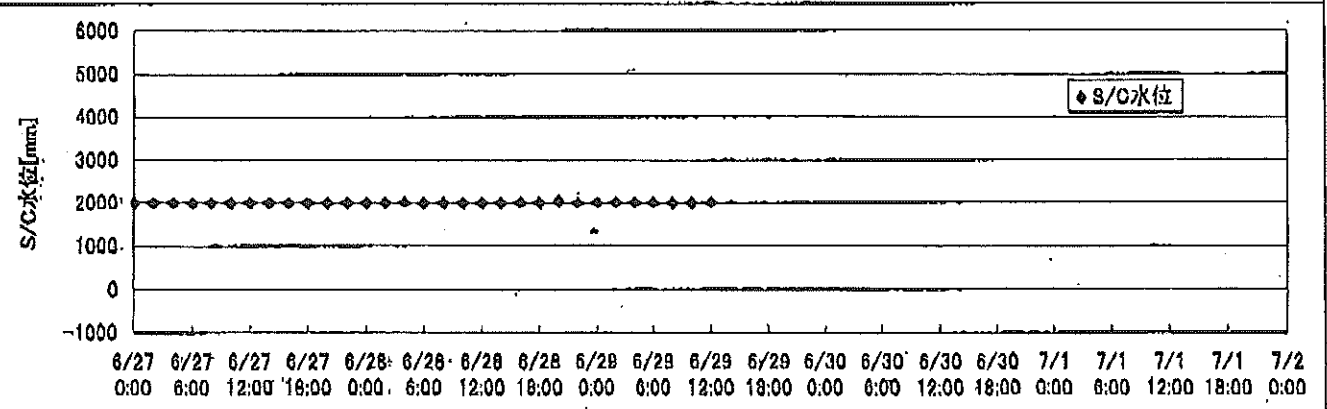
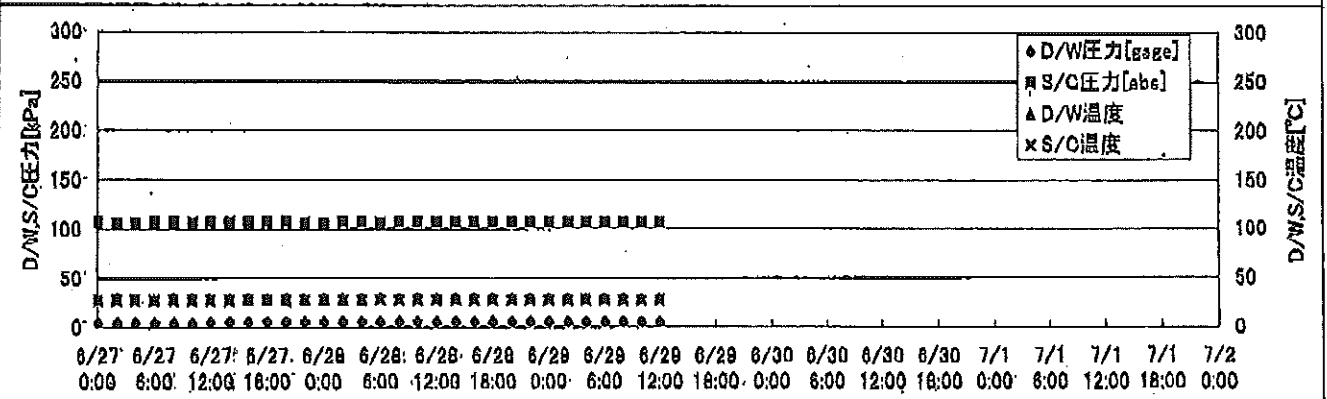
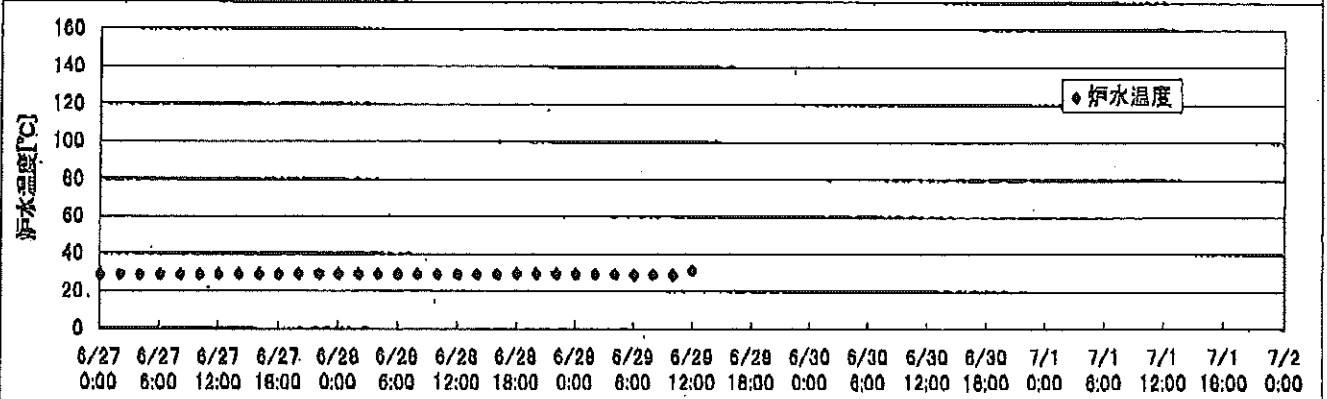
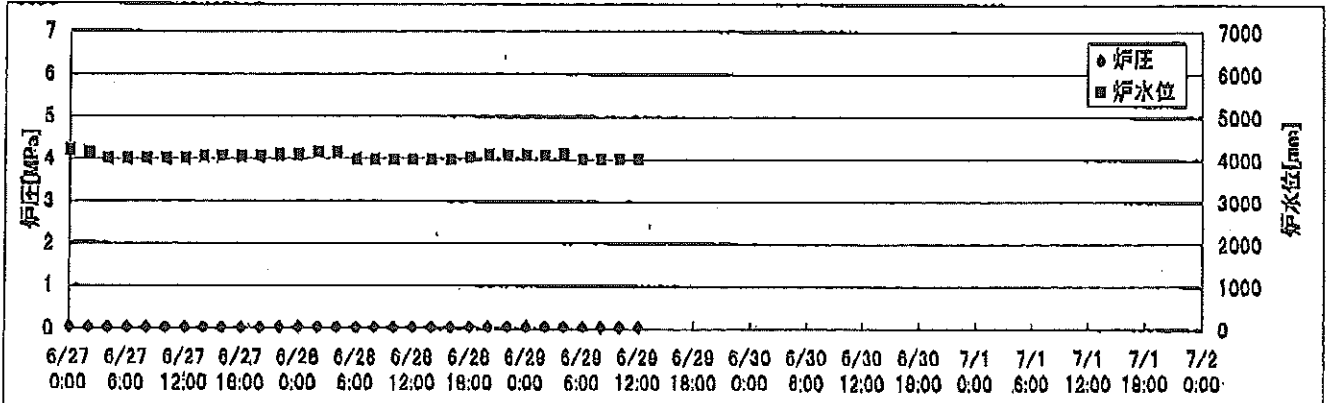
### 2F-2号機



### 2F-3号機



### 2F-4号機



# 2F-1号機

※燃料頂部(TAF)からの水位=炉水位+4200[mm]

時間	炉圧 [MPa (gage)]	炉水位 [mm] 停止時	炉水温度[°C]	D/W圧力 [kPa(gage)]	D/W温度 [°C]	S/C圧力 [kPa(abs)]	S/C水位 [mm]	S/C温度 [°C]
2011/6/27 0:00	0.05	5700	24.2	5	26.2	107	1959	24
2011/6/27 2:00	0.05	5700	24.2	5	26.2	107	1959	24
2011/6/27 4:00	0.05	5700	24.2	5	26.2	107	1959	24
2011/6/27 6:00	0.05	5700	24.2	5	26.2	107	1959	24
2011/6/27 8:00	0.05	5700	24.1	5	26.2	107	1959	24
2011/6/27 10:00	0.05	5700	24.2	5	26.2	107	1958	24
2011/6/27 12:00	0.05	5700	24.2	5	26.2	107	1958	24
2011/6/27 14:00	0.05	5700	24.2	5	26.2	107	1958	24
2011/6/27 16:00	0.05	5700	24.2	5	26.2	107	1958	24
2011/6/27 18:00	0.05	5700	24.3	5	26.2	107	1958	24
2011/6/27 20:00	0.05	5700	24.3	5	26.1	107	1958	24
2011/6/27 22:00	0.05	5700	24.3	5	26.2	107	1958	24
2011/6/28 0:00	0.05	5700	24.3	5	26.2	107	1958	24
2011/6/28 2:00	0.05	5700	24.3	5	26.2	107	1958	24
2011/6/28 4:00	0.05	5700	24.3	5	26.2	107	1958	24
2011/6/28 6:00	0.05	5700	24.3	5	26.1	107	1958	24
2011/6/28 8:00	0.05	5700	24.3	5	26.2	107	1958	24
2011/6/28 10:00	0.05	5700	24.3	5	26.3	107	1958	24
2011/6/28 12:00	0.05	5700	24.4	5	26.2	107	1958	24
2011/6/28 14:00	0.05	5700	24.4	5	26.1	107	1958	24
2011/6/28 16:00	0.05	5700	24.4	5	26.3	107	1957	24
2011/6/28 18:00	0.05	5700	24.4	5	26.2	107	1963	24
2011/6/28 20:00	0.05	5650	24.4	5	26.2	107	1963	24
2011/6/28 22:00	0.05	5650	24.2	5	26.3	107	1963	24
2011/6/29 0:00	0.05	5650	24.1	5	26.3	107	1963	24
2011/6/29 2:00	0.05	5650	24.0	5	26.3	107	1963	24
2011/6/29 4:00	0.05	5650	23.9	5	26.3	106	1963	24
2011/6/29 6:00	0.05	5650	23.8	5	26.3	107	1963	24
2011/6/29 8:00	0.05	5650	23.8	5	26.3	106	1963	24
2011/6/29 10:00	0.04	5650	23.8	5	26.2	106	1963	24
2011/6/29 12:00	0.04	5650	23.7	5	26.2	106	1963	24
2011/6/29 14:00								
2011/6/29 16:00								
2011/6/29 18:00								
2011/6/29 20:00								
2011/6/29 22:00								
2011/6/30 0:00								



## 2F-3号機

※燃料頂部(TAF)からの水位=炉水位+4200[mm]

時間	炉圧 [MPa (gage)]	炉水位 [mm] 停止時	炉水温度[°C]	D/W圧力 [kPa(gage)]	D/W温度 [°C]	S/C圧力 [kPa(abs)]	S/C水位 [mm]	S/C温度 [°C]
2011/6/27 0:00	0.02	4100	29.8	9	29.3	110	2100	27
2011/6/27 2:00	0.02	4100	29.8	9	29.3	111	2100	27
2011/6/27 4:00	0.02	4100	29.8	9	29.3	111	2100	27
2011/6/27 6:00	0.02	4150	29.8	9	29.4	110	2100	27
2011/6/27 8:00	0.02	4150	29.8	9	29.3	110	2100	27
2011/6/27 10:00	0.02	4150	29.8	9	29.3	110	2100	27
2011/6/27 12:00	0.02	4150	29.9	9	29.3	110	2100	27
2011/6/27 14:00	0.02	4200	30.0	9	29.3	110	2100	27
2011/6/27 16:00	0.02	4200	30.1	9	29.3	110	2100	27
2011/6/27 18:00	0.02	4000	30.1	9	29.4	110	2100	27
2011/6/27 20:00	0.02	4000	30.2	9	29.3	110	2100	27
2011/6/27 22:00	0.02	4000	30.1	9	29.3	111	2100	27
2011/6/28 0:00	0.02	4000	30.0	10	29.3	111	2100	27
2011/6/28 2:00	0.02	4000	30.0	10	29.4	110	2100	27
2011/6/28 4:00	0.02	4000	29.9	10	29.3	110	2100	27
2011/6/28 6:00	0.02	4000	29.8	9	29.3	111	2100	27
2011/6/28 8:00	0.02	4000	29.8	9	29.4	110	2100	27
2011/6/28 10:00	0.02	4000	29.8	9	29.4	110	2100	27
2011/6/28 12:00	0.02	4000	29.9	9	29.4	110	2100	27
2011/6/28 14:00	0.02	4000	30.0	10	29.4	110	2100	27
2011/6/28 16:00	0.02	4000	30.2	10	29.3	110	2100	27
2011/6/28 18:00	0.02	4050	30.1	10	29.3	110	2100	27
2011/6/28 20:00	0.02	4050	30.1	10	29.4	110	2100	27
2011/6/28 22:00	0.02	4050	30.1	10	29.3	110	2100	27
2011/6/29 0:00	0.02	4050	30.0	10	29.3	110	2100	27
2011/6/29 2:00	0.02	4100	29.9	10	29.3	110	2100	27
2011/6/29 4:00	0.02	4100	29.8	9	29.5	110	2100	27
2011/6/29 6:00	0.02	4100	29.6	9	29.3	110	2100	27
2011/6/29 8:00	0.02	4100	29.6	9	29.3	110	2100	27
2011/6/29 10:00	0.02	4100	29.5	9	29.4	110	2100	27
2011/6/29 12:00	0.02	4150	29.5	9	29.4	110	2100	27
2011/6/29 14:00								
2011/6/29 16:00								
2011/6/29 18:00								
2011/6/29 20:00								
2011/6/29 22:00								
2011/6/30 0:00								

## 2F-4号機

※燃料頂部(TAF)からの水位=炉水位+4200[mm]

時間	炉圧 [MPa (gage)]	炉水位 [mm] 停止時	炉水温度[°C]	D/W圧力 [kPa(gage)]	D/W温度 [°C]	S/C圧力 [kPa(abs)]	S/C水位 [mm]	S/C温度 [°C]
2011/6/27 0:00	0.06	4200	29.1	5	29.3	107	2000	28
2011/6/27 2:00	0.05	4150	29.0	5	29.2	106	2000	28
2011/6/27 4:00	0.05	4000	29.0	5	29.2	106	2000	28
2011/6/27 6:00	0.05	4000	29.1	5	29.2	107	2000	28
2011/6/27 8:00	0.05	4000	29.1	5	29.2	107	2000	28
2011/6/27 10:00	0.05	4000	29.1	5	29.3	107	2000	28
2011/6/27 12:00	0.05	4000	29.2	6	29.2	107	2000	28
2011/6/27 14:00	0.05	4050	29.2	6	29.2	107	2000	28
2011/6/27 16:00	0.05	4050	29.3	6	29.2	107	2000	28
2011/6/27 18:00	0.05	4050	29.4	6	29.2	107	2000	28
2011/6/27 20:00	0.05	4050	29.4	6	29.2	107	2000	28
2011/6/27 22:00	0.06	4100	29.4	6	29.2	106	2000	28
2011/6/28 0:00	0.06	4100	29.4	6	29.2	106	2000	28
2011/6/28 2:00	0.06	4150	29.4	6	29.4	107	2000	28
2011/6/28 4:00	0.06	4150	29.3	6	29.2	107	2000	28
2011/6/28 6:00	0.05	4000	29.3	6	29.2	106	2000	28
2011/6/28 8:00	0.05	4000	29.2	6	29.3	107	2000	28
2011/6/28 10:00	0.05	4000	29.2	6	29.3	107	2000	28
2011/6/28 12:00	0.06	4000	29.2	6	29.2	107	2000	28
2011/6/28 14:00	0.06	4000	29.3	6	29.2	107	2000	28
2011/6/28 16:00	0.06	4000	29.3	6	29.2	107	2000	28
2011/6/28 18:00	0.06	4050	29.5	6	29.2	107	2000	28
2011/6/28 20:00	0.07	4100	29.5	6	29.3	107	2050	28
2011/6/28 22:00	0.07	4100	29.5	6	29.2	107	2000	28
2011/6/29 0:00	0.07	4100	29.4	6	29.2	107	2000	28
2011/6/29 2:00	0.07	4100	29.3	6	29.2	107	2000	28
2011/6/29 4:00	0.07	4150	29.3	6	29.2	107	2000	28
2011/6/29 6:00	0.06	4000	29.1	6	29.2	107	2000	28
2011/6/29 8:00	0.06	4000	29.1	6	29.3	107	2000	28
2011/6/29 10:00	0.06	4000	29.0	6	29.3	107	2000	28
2011/6/29 12:00	0.06	4000	31.3	6	29.2	107	2000	28
2011/6/29 14:00								
2011/6/29 16:00								
2011/6/29 18:00								
2011/6/29 20:00								
2011/6/29 22:00								
2011/6/30 0:00								

-6/29 9:53 RHRCポンプ(B)点検に伴いRHR(B)停止