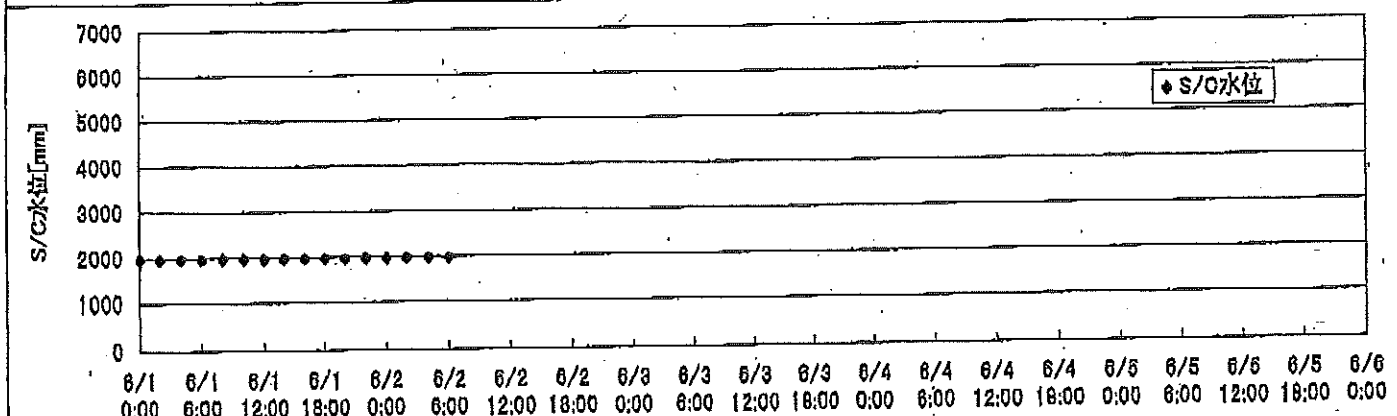
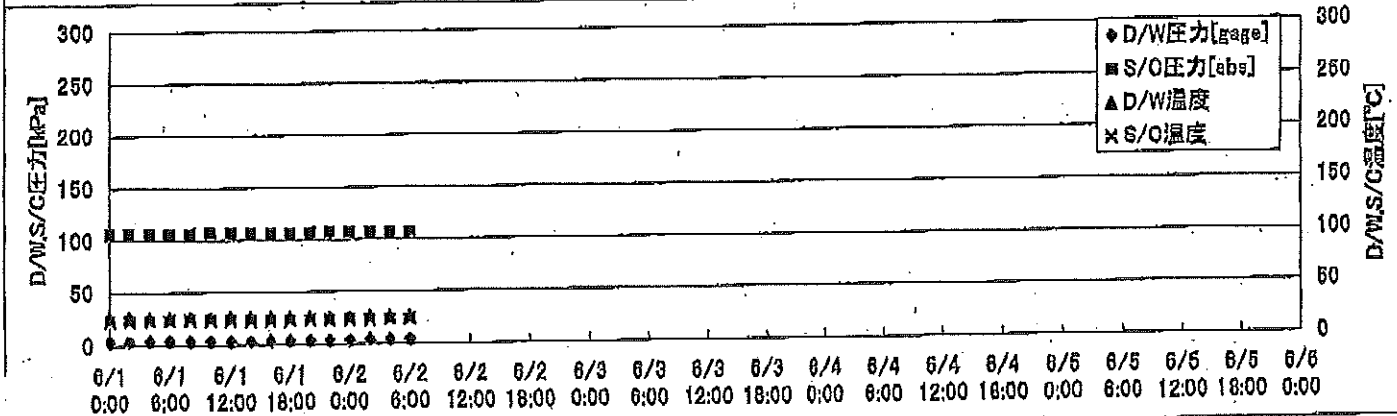
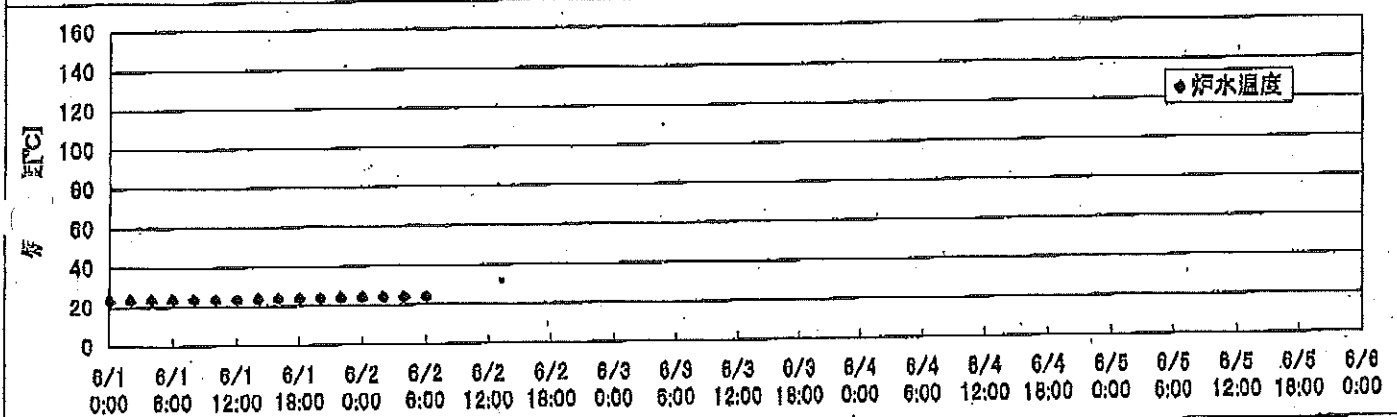
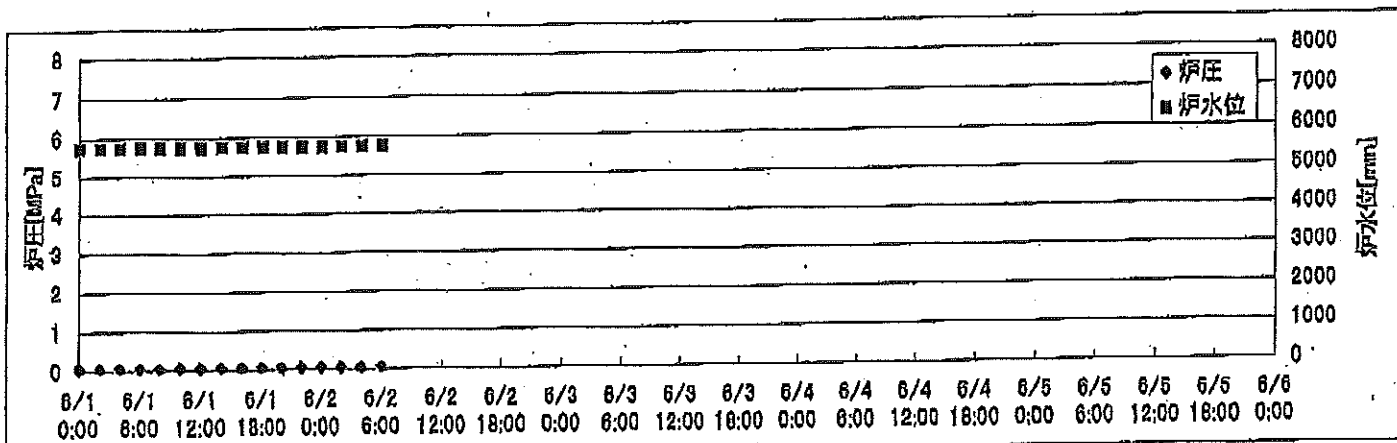
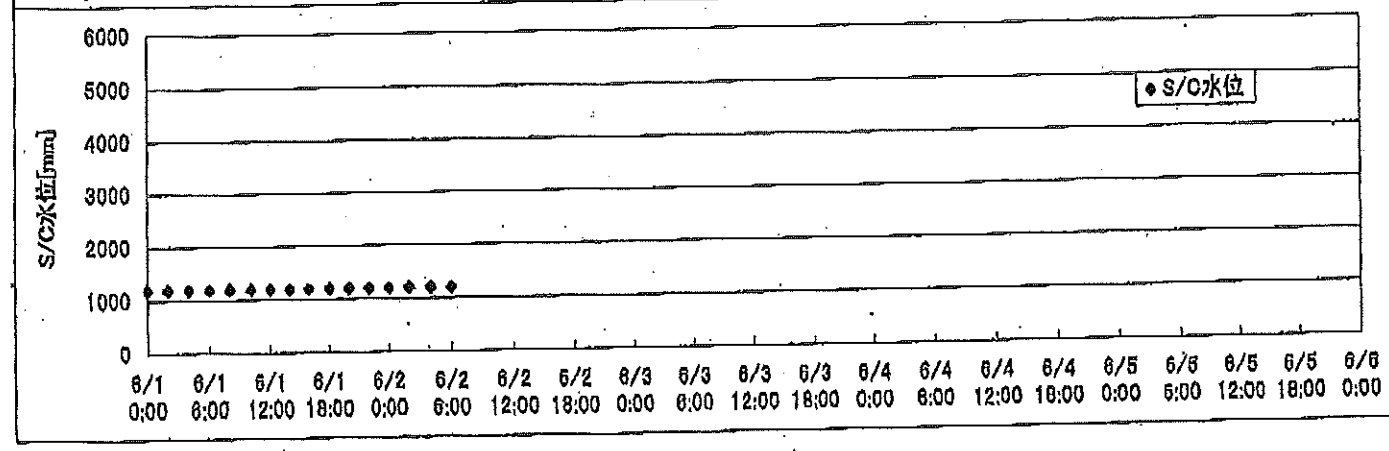
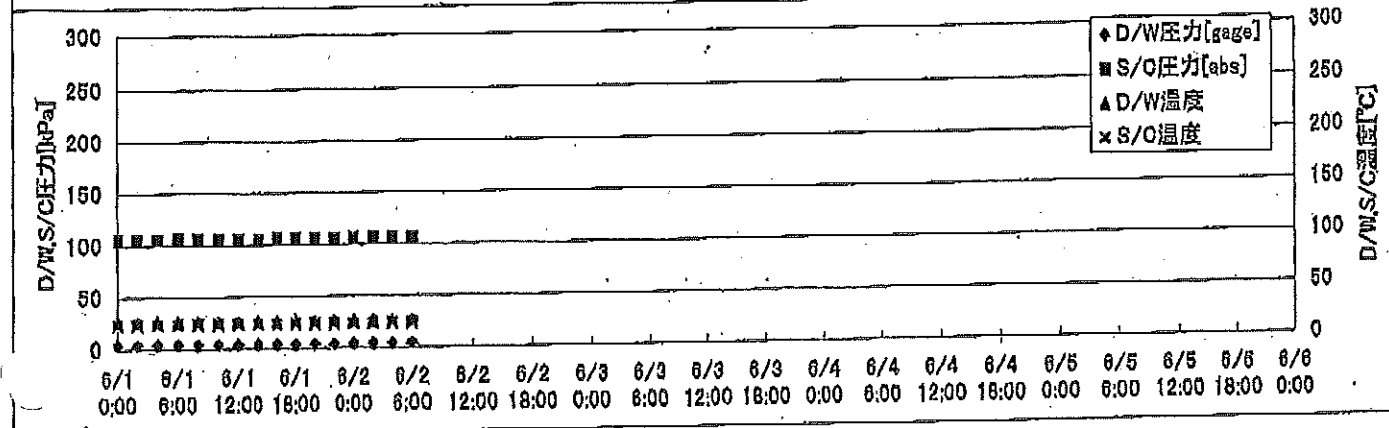
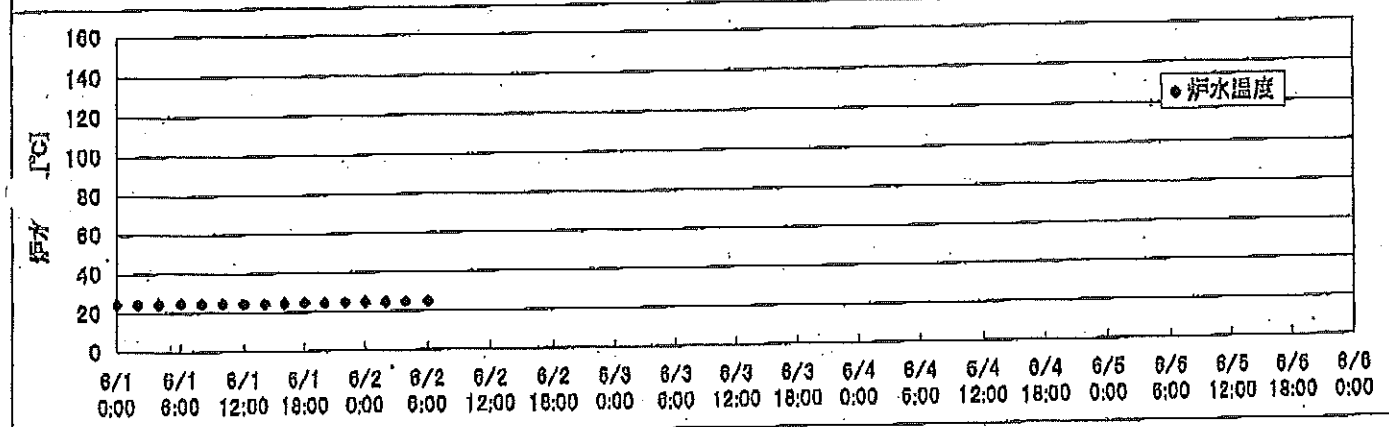
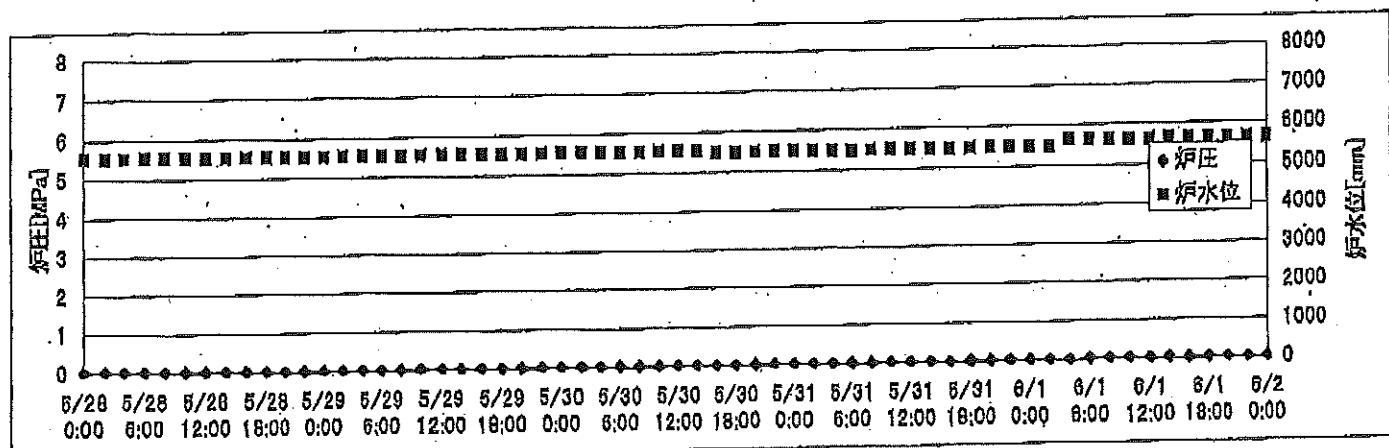


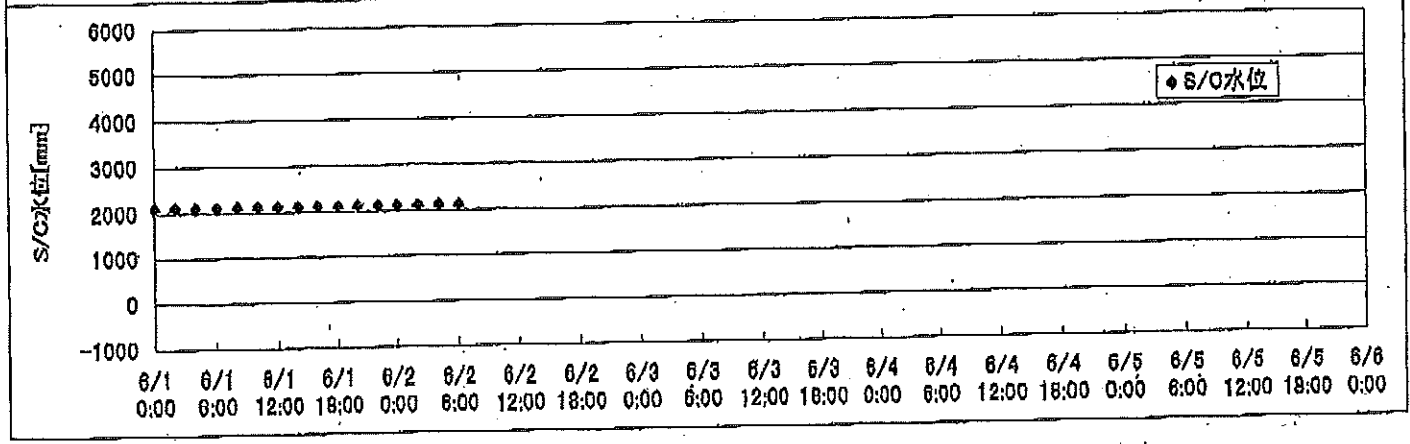
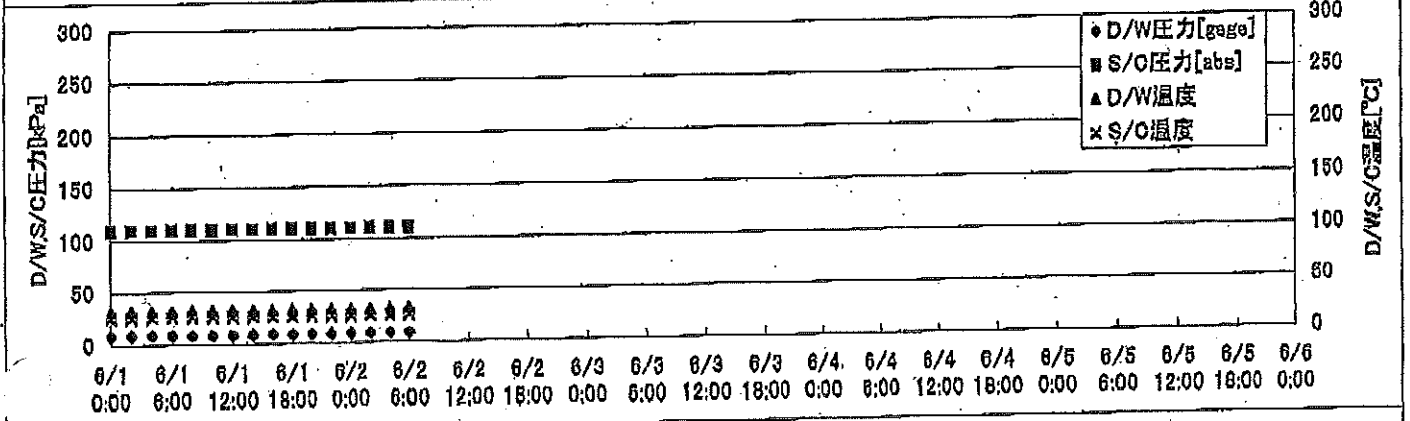
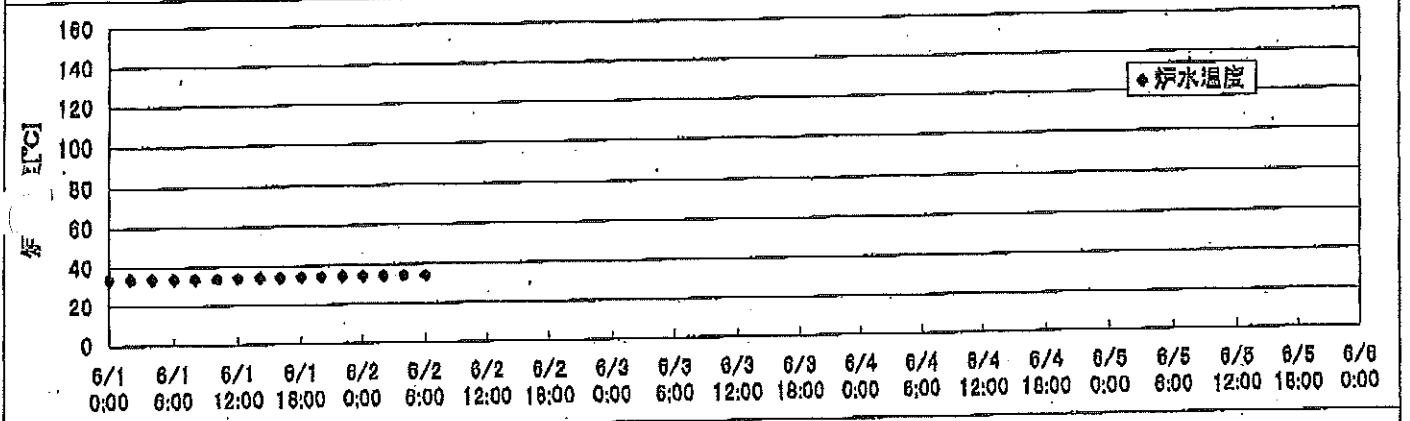
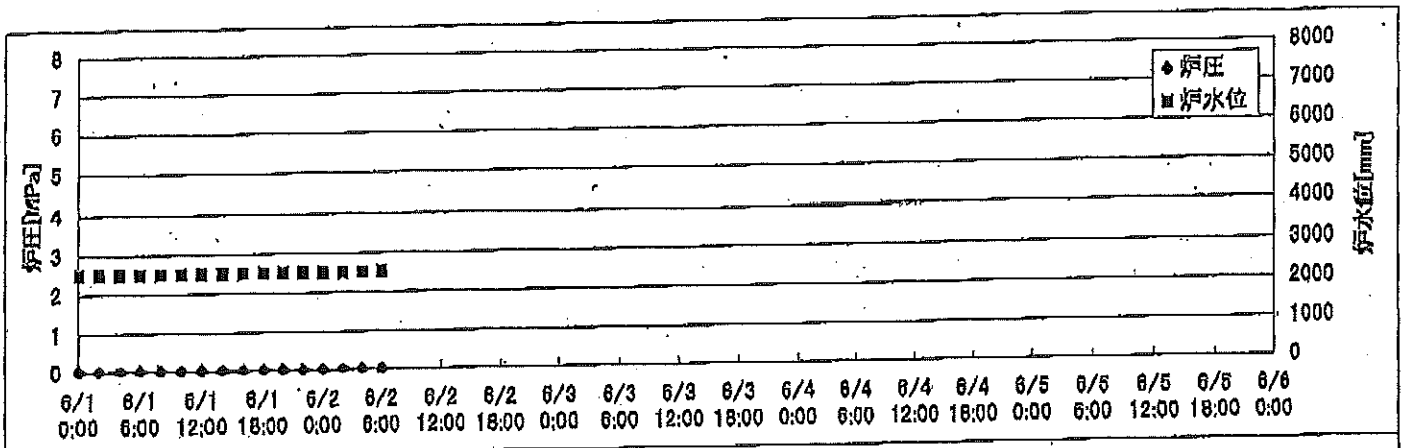
2F-1号機



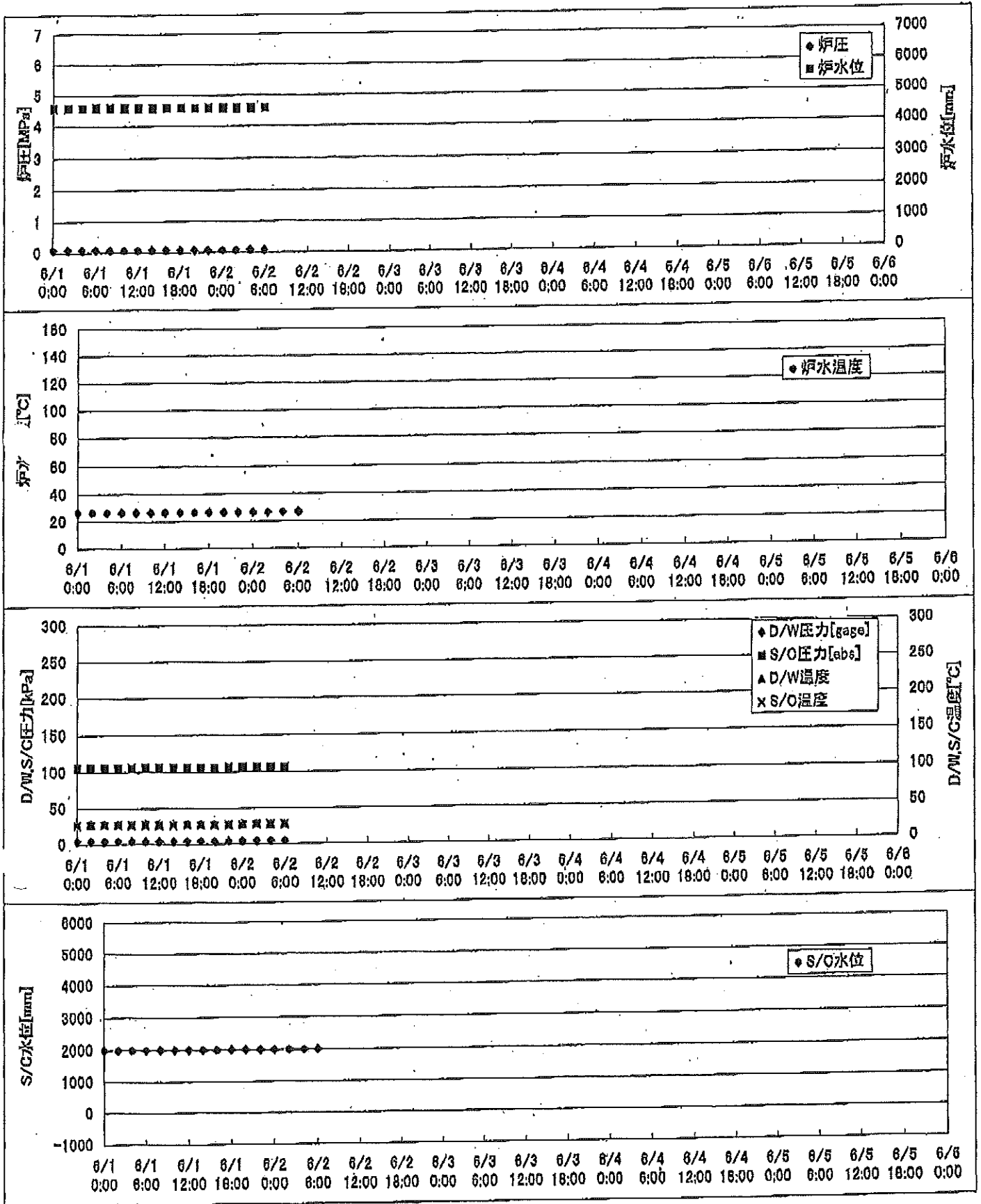
2F-2号機



2F-3号機



2F-4号機



## 2F-1号機

※燃料頂部(TAF)からの水位=炉水位+4200[mm]

時間	炉圧 [MPa (gage)]	炉水位 [mm] 停止時	炉水温度[°C] 給水/スル温度	D/W圧力 [kPa(gage)]	D/W温度 [°C]	S/C圧力 [kPa(abs)]	S/C水位 [mm]	S/C温度 [°C]
2011/6/1 0:00	0.05	5750	23.4	4	25.8	106	1963	23
2011/6/1 2:00	0.05	5750	23.4	4	25.8	106	1963	23
2011/6/1 4:00	0.05	5750	23.4	4	25.8	106	1962	23
2011/6/1 6:00	0.05	5750	23.4	4	25.8	106	1962	23
2011/6/1 8:00	0.05	5750	23.4	4	25.8	106	1962	23
2011/6/1 10:00	0.05	5750	23.4	3	25.8	106	1962	23
2011/6/1 12:00	0.05	5750	23.4	3	25.8	106	1961	23
2011/6/1 14:00	0.05	5750	23.4	3	25.8	106	1962	23
2011/6/1 16:00	0.05	5750	23.5	4	25.8	106	1962	23
2011/6/1 18:00	0.05	5750	23.5	4	25.8	106	1962	23
2011/6/1 20:00	0.05	5750	23.6	3	25.8	106	1962	23
2011/6/1 22:00	0.05	5750	23.6	3	25.8	106	1962	23
2011/6/2 0:00	0.05	5750	23.6	3	25.8	106	1962	23
2011/6/2 2:00	0.05	5750	23.6	4	25.8	106	1962	23
2011/6/2 4:00	0.05	5750	23.6	4	25.8	106	1962	23
<b>2011/6/2 6:00</b>	<b>0.05</b>	<b>5750</b>	<b>23.6</b>	<b>4</b>	<b>25.8</b>	<b>106</b>	<b>1962</b>	<b>23</b>
2011/6/2 8:00								
2011/6/2 10:00								
2011/6/2 12:00								
2011/6/2 14:00								
2011/6/2 16:00								
2011/6/2 18:00								
2011/6/2 20:00								
2011/6/2 22:00								
2011/6/3 0:00								
2011/6/3 2:00								
2011/6/3 4:00								
2011/6/3 6:00								
2011/6/3 8:00								
2011/6/3 10:00								
2011/6/3 12:00								
2011/6/3 14:00								
2011/6/3 16:00								
2011/6/3 18:00								
2011/6/3 20:00								
2011/6/3 22:00								
2011/6/4 0:00								

# 2F-2号機

※燃料頂部(TAF)からの水位=炉水位+4200[mm]

時間	炉圧 [MPa (gage)]	炉水位 [mm] 停止時	炉水温度[°C] 給水/スル温度	D/W圧力 [kPa(gage)]	D/W温度 [°C]	S/C圧力 [kPa(abs)]	S/C水位 [mm]	S/C温度 [°C]
2011/6/1 0:00	0.02	5500	24.4	4	26.2	106	1200	24
2011/6/1 2:00	0.02	5500	24.4	4	26.3	106	1200	24
2011/6/1 4:00	0.02	5650	24.4	4	26.3	106	1200	24
2011/6/1 6:00	0.03	5650	24.4	4	26.3	106	1200	24
2011/6/1 8:00	0.03	5650	24.4	4	26.3	106	1200	24
2011/6/1 10:00	0.03	5650	24.4	4	26.2	106	1200	24
2011/6/1 12:00	0.03	5650	24.4	4	26.2	106	1200	24
2011/6/1 14:00	0.04	5650	24.4	4	26.0	105	1200	24
2011/6/1 16:00	0.03	5650	24.5	4	26.0	106	1200	24
2011/6/1 18:00	0.04	5650	24.5	4	26.5	106	1200	24
2011/6/1 20:00	0.04	5650	24.5	4	26.3	106	1200	24
2011/6/1 22:00	0.03	5650	24.6	4	26.3	106	1200	24
2011/6/2 0:00	0.04	5650	24.6	4	26.3	106	1200	24
2011/6/2 2:00	0.03	5650	24.6	4	26.3	106	1200	24
2011/6/2 4:00	0.03	5700	24.6	4	26.3	106	1200	24
<b>2011/6/2 6:00</b>	<b>0.03</b>	<b>5700</b>	<b>24.7</b>	<b>4</b>	<b>26.3</b>	<b>106</b>	<b>1200</b>	<b>24</b>
2011/6/2 8:00								
2011/6/2 10:00								
2011/6/2 12:00								
2011/6/2 14:00								
2011/6/2 16:00								
2011/6/2 18:00								
2011/6/2 20:00								
2011/6/2 22:00								
2011/6/3 0:00								
2011/6/3 2:00								
2011/6/3 4:00								
2011/6/3 6:00								
2011/6/3 8:00								
2011/6/3 10:00								
2011/6/3 12:00								
2011/6/3 14:00								
2011/6/3 16:00								
2011/6/3 18:00								
2011/6/3 20:00								
2011/6/3 22:00								
2011/6/4 0:00								



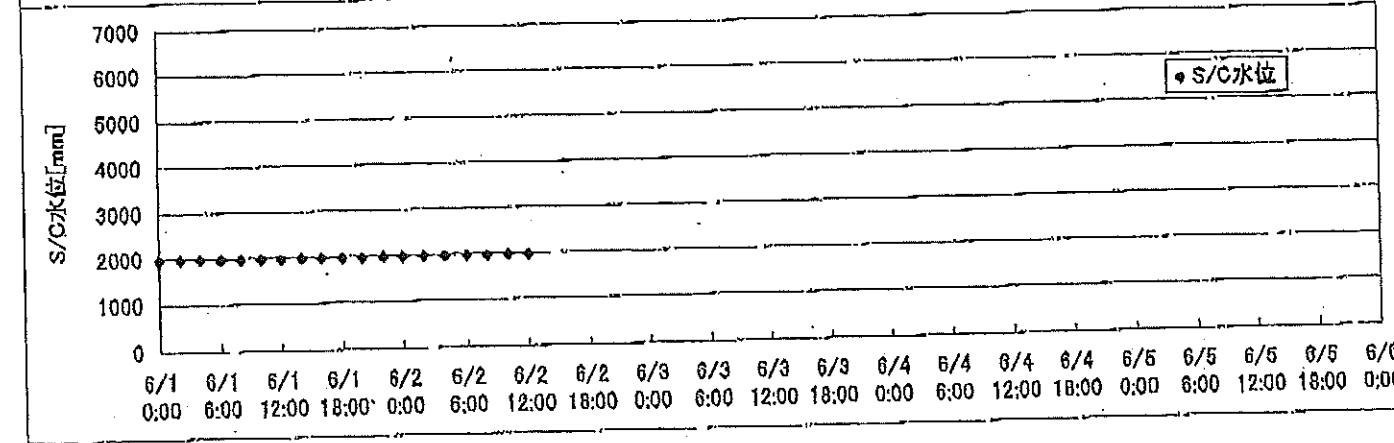
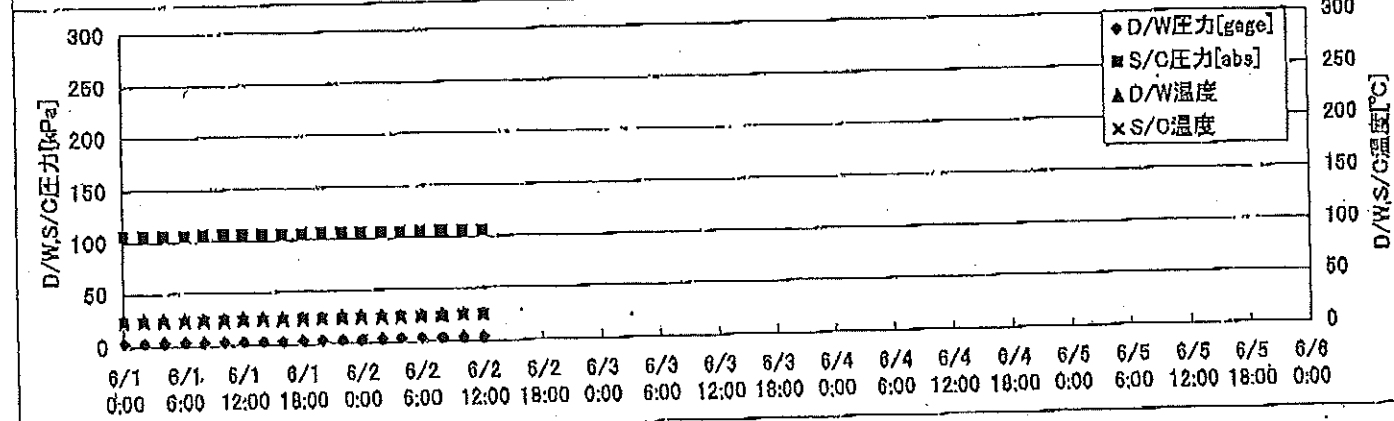
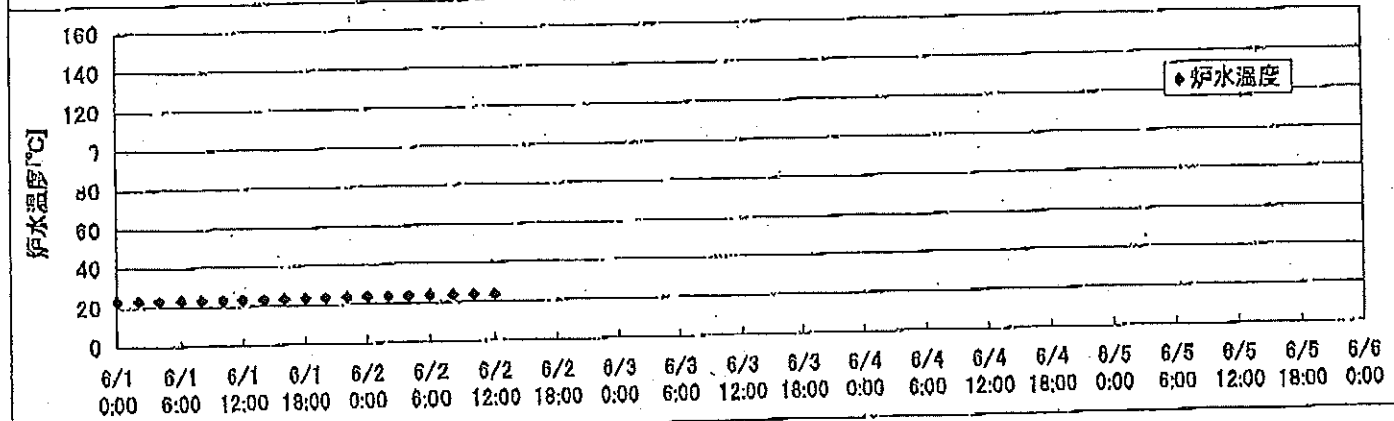
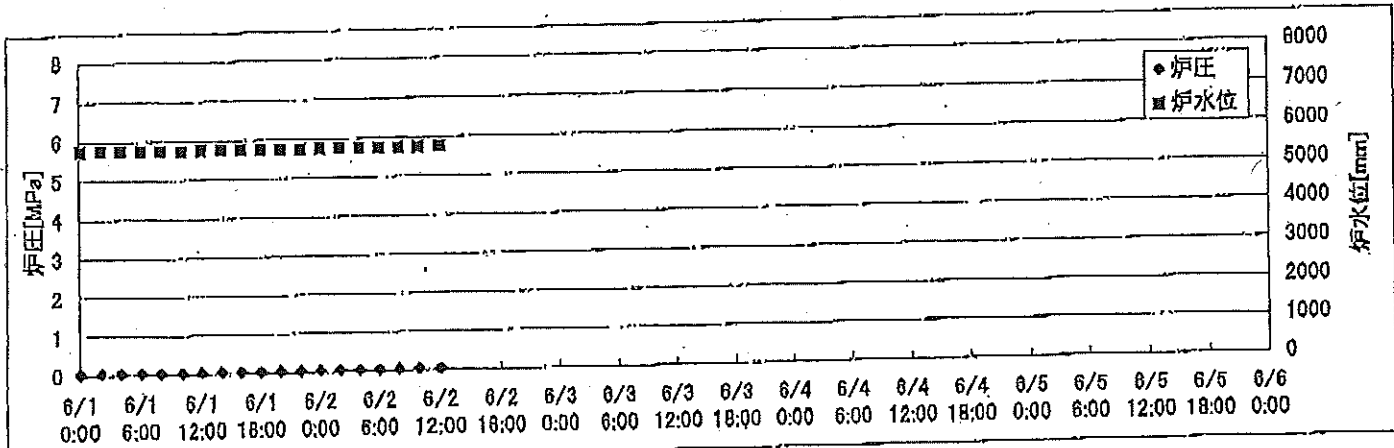
## 2F-4号機

※燃料頂部(TAF)からの水位=炉水位+4200[mm]

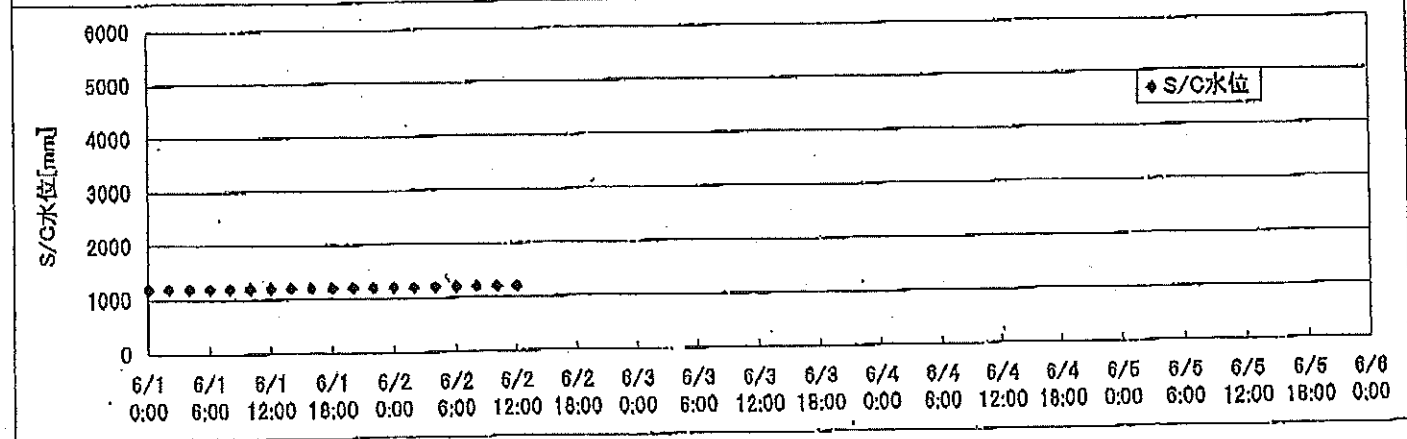
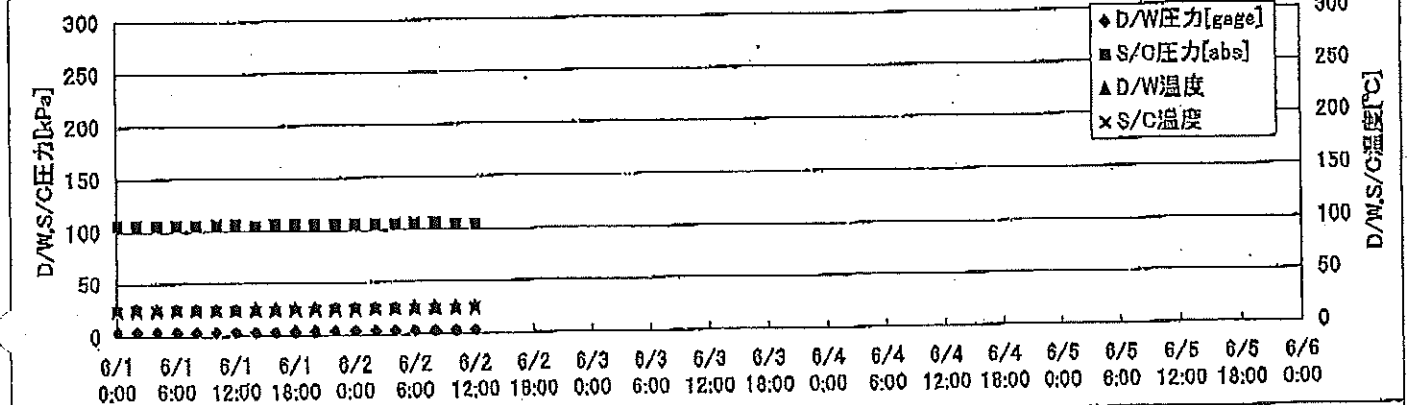
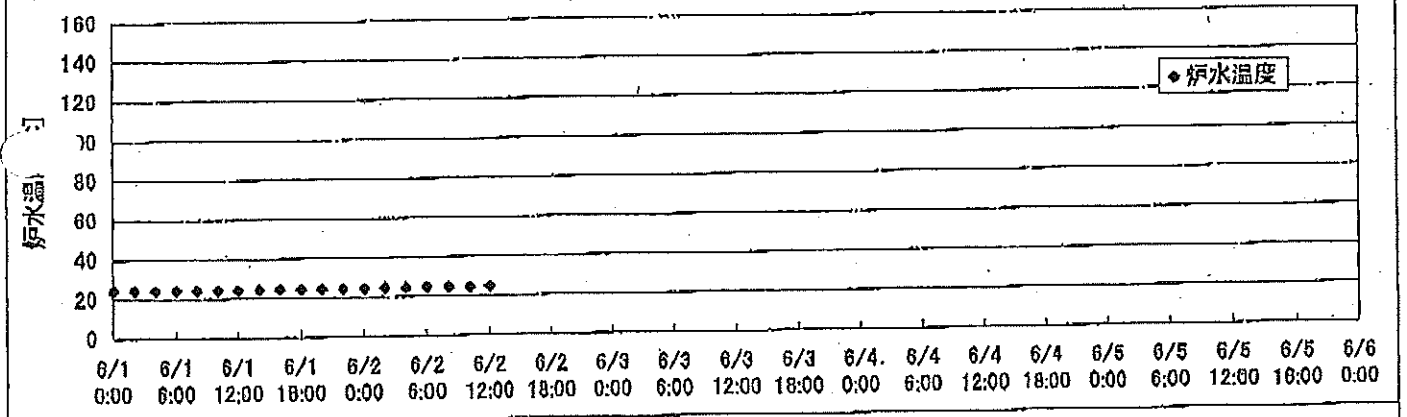
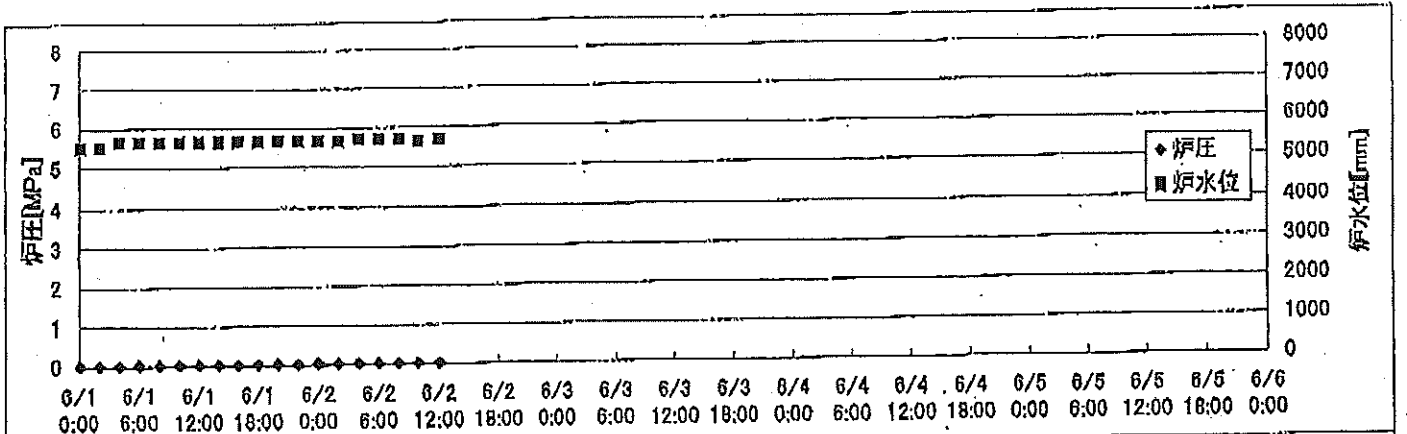
時間	炉圧 [MPa (gage)]	炉水位 [mm] アップセット	炉水温度[°C] 給水/スル温度	D/W圧力 [kPa(gage)]	D/W温度 [°C]	S/C圧力 [kPa(abs)]	S/C水位 [mm]	S/C温度 [°C]
2011/6/1 0:00	0.07	4589	26.7	4	29.1	106	2000	27
2011/6/1 2:00	0.07	4589	26.7	4	28.6	106	2000	27
2011/6/1 4:00	0.07	4589	26.6	4	28.7	106	2000	27
2011/6/1 6:00	0.07	4589	26.7	4	28.8	106	2000	27
2011/6/1 8:00	0.07	4589	26.6	4	28.7	106	2000	27
2011/6/1 10:00	0.07	4589	26.6	4	28.5	106	2000	27
2011/6/1 12:00	0.07	4589	26.7	4	28.7	106	2000	27
2011/6/1 14:00	0.07	4589	26.7	4	28.8	106	2000	27
2011/6/1 16:00	0.07	4589	26.7	4	29.0	106	2000	27
2011/6/1 18:00	0.07	4589	26.7	4	28.7	106	2000	27
2011/6/1 20:00	0.07	4589	26.7	4	28.6	105	2000	27
2011/6/1 22:00	0.07	4589	26.8	4	28.4	106	2000	27
2011/6/2 0:00	0.07	4589	26.8	4	28.7	106	2000	28
2011/6/2 2:00	0.07	4589	26.8	4	28.8	106	2000	28
2011/6/2 4:00	0.07	4589	26.8	4	28.6	106	2000	28
2011/6/2 6:00	0.07	4589	26.9	4	28.7	106	2000	28
2011/6/2 8:00								
2011/6/2 10:00								
2011/6/2 12:00								
2011/6/2 14:00								
2011/6/2 16:00								
2011/6/2 18:00								
2011/6/2 20:00								
2011/6/2 22:00								
2011/6/3 0:00								
2011/6/3 2:00								
2011/6/3 4:00								
2011/6/3 6:00								
2011/6/3 8:00								
2011/6/3 10:00								
2011/6/3 12:00								
2011/6/3 14:00								
2011/6/3 16:00								
2011/6/3 18:00								
2011/6/3 20:00								
2011/6/3 22:00								
2011/6/4 0:00								



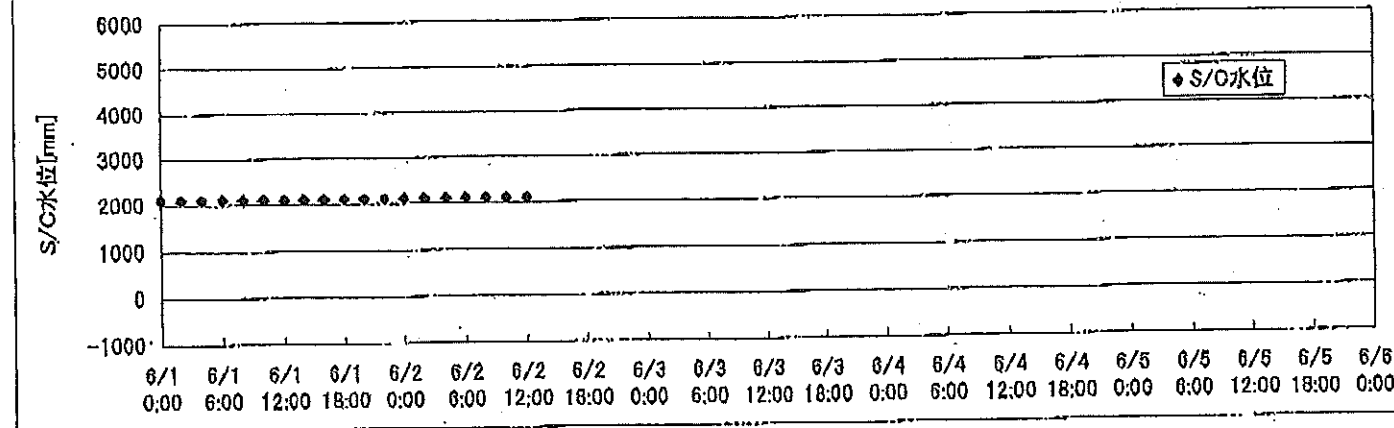
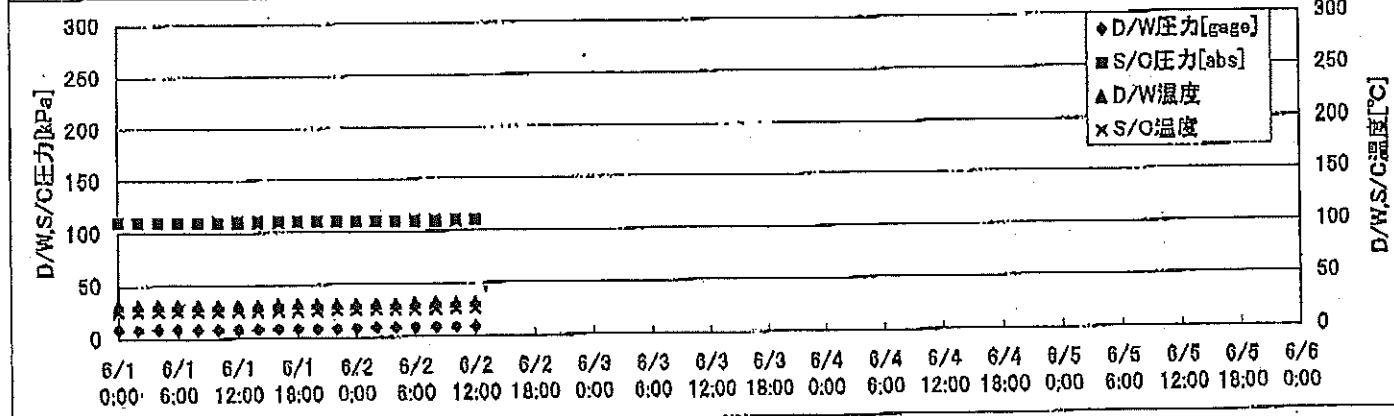
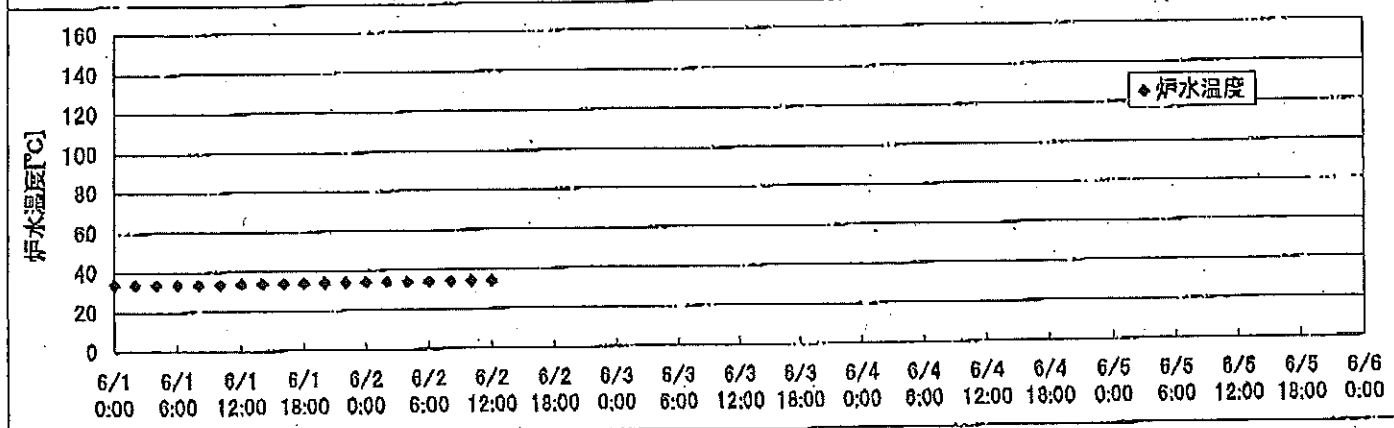
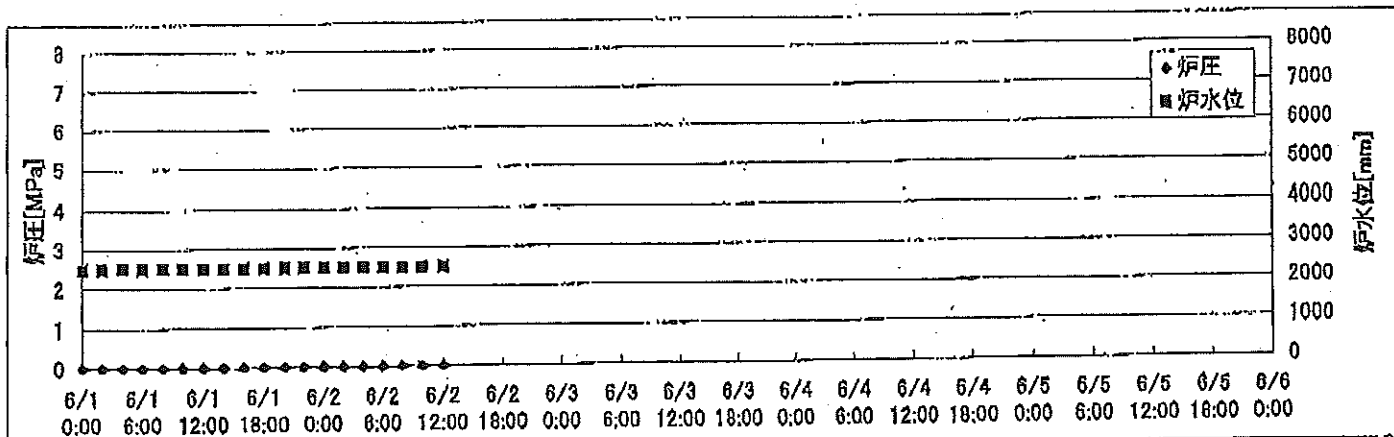
2F-1号機



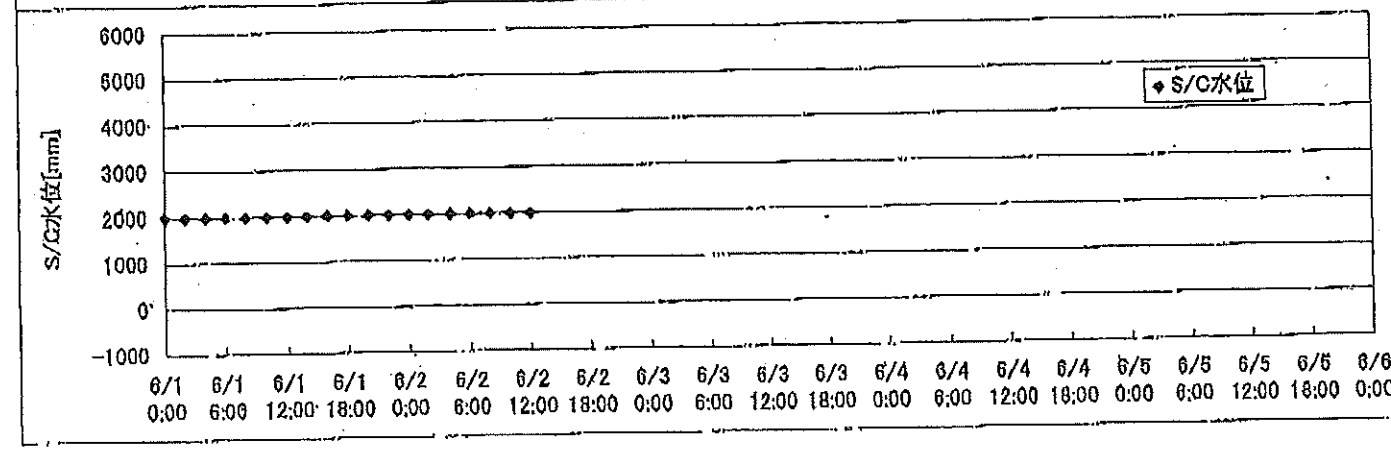
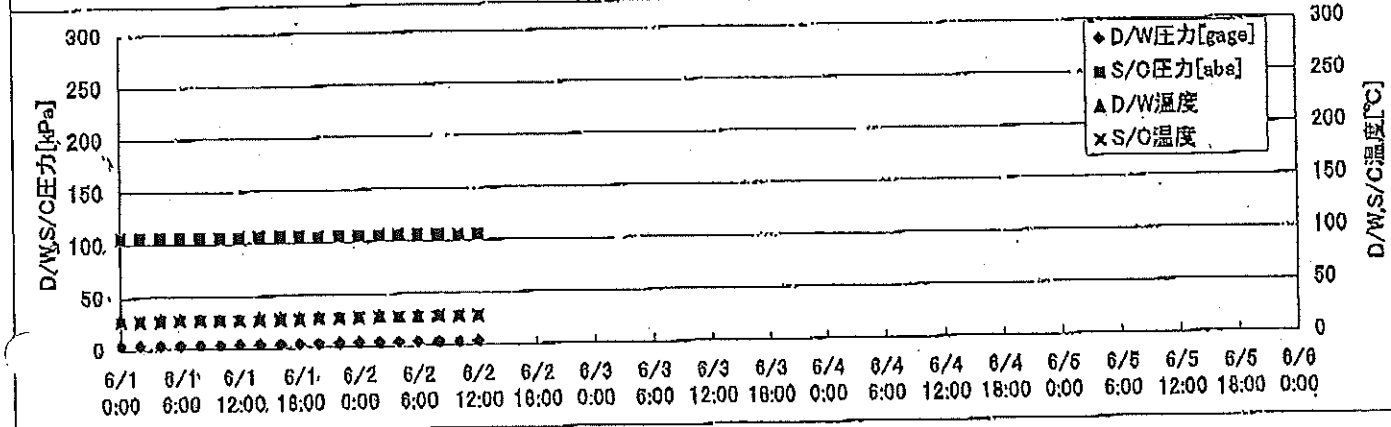
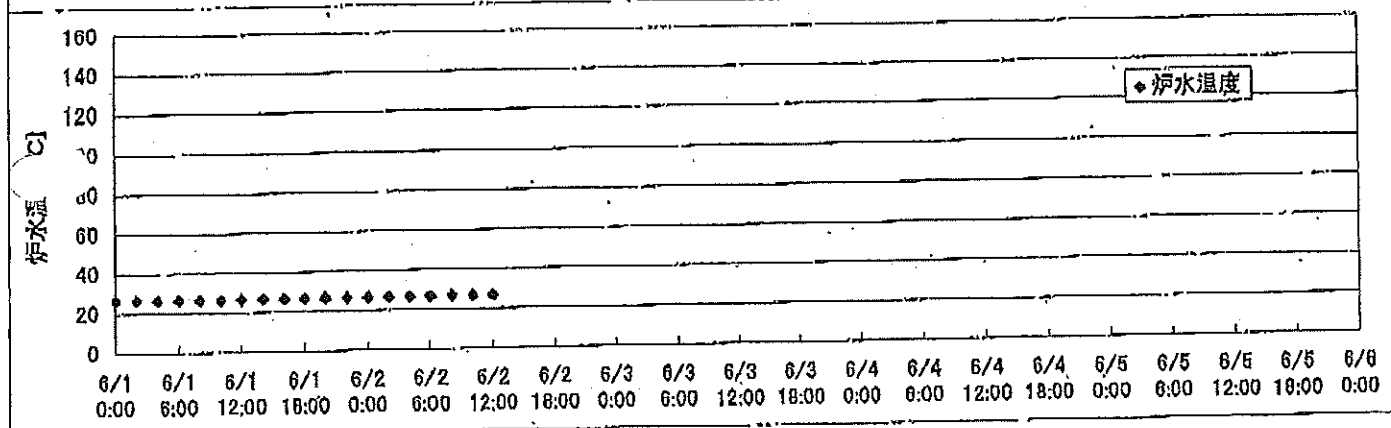
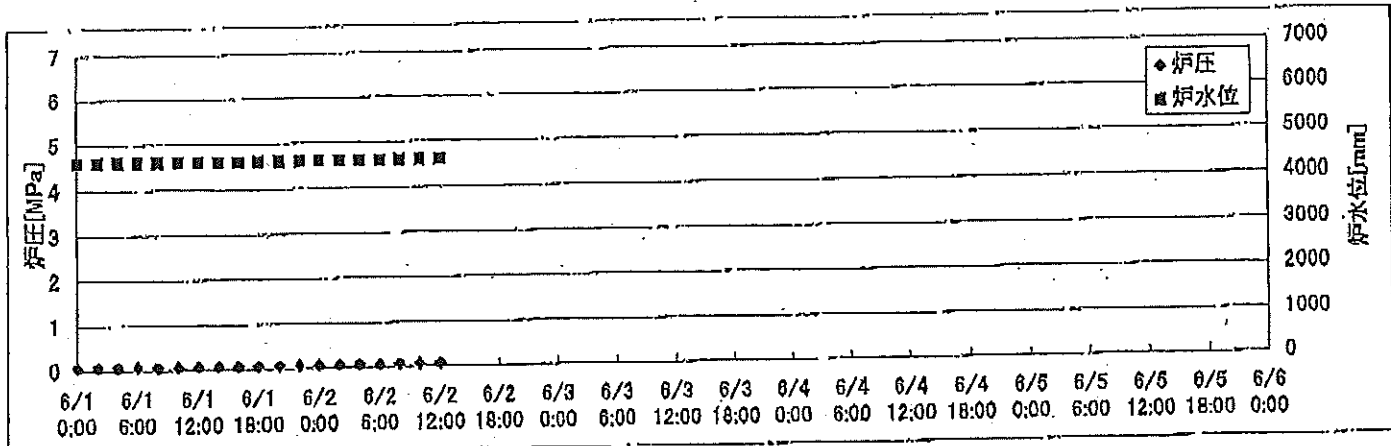
2F-2号機



# 2F-3号機



2F-4号機



# 2F-1号機

※燃料頂部(TAF)からの水位=炉水位+4200[mm]

時間	炉圧 [MPa (gage)]	炉水位 [mm] 停止時	炉水温度[°C] 給水/スル温度	D/W圧力 [kPa(gage)]	D/W温度 [°C]	S/C圧力 [kPa(abs)]	S/C水位 [mm]	S/C温度 [°C]
2011/6/1 0:00	0.05	5750	23.4	4	25.8	106	1963	23
2011/6/1 2:00	0.05	5750	23.4	4	25.8	106	1963	23
2011/6/1 4:00	0.05	5750	23.4	4	25.8	106	1962	23
2011/6/1 6:00	0.05	5750	23.4	4	25.8	106	1962	23
2011/6/1 8:00	0.05	5750	23.4	4	25.8	106	1962	23
2011/6/1 10:00	0.05	5750	23.4	3	25.8	106	1962	23
2011/6/1 12:00	0.05	5750	23.4	3	25.8	106	1961	23
2011/6/1 14:00	0.05	5750	23.4	3	25.8	106	1962	23
2011/6/1 16:00	0.05	5750	23.5	4	25.8	106	1962	23
2011/6/1 18:00	0.05	5750	23.5	4	25.8	106	1962	23
2011/6/1 20:00	0.05	5750	23.6	3	25.8	106	1962	23
2011/6/1 22:00	0.05	5750	23.6	3	25.8	106	1962	23
2011/6/2 0:00	0.05	5750	23.6	4	25.8	106	1962	23
2011/6/2 2:00	0.05	5750	23.6	4	25.8	106	1962	23
2011/6/2 4:00	0.05	5750	23.6	4	25.8	106	1962	23
2011/6/2 6:00	0.05	5750	23.6	4	25.8	106	1962	23
2011/6/2 8:00	0.05	5750	23.6	4	25.8	106	1961	23
2011/6/2 10:00	0.05	5750	23.7	4	25.8	106	1961	24
<b>2011/6/2 12:00</b>	<b>0.05</b>	<b>5750</b>	<b>23.6</b>	<b>4</b>	<b>25.9</b>	<b>106</b>	<b>1961</b>	<b>24</b>
2011/6/2 14:00								
2011/6/2 16:00								
2011/6/2 18:00								
2011/6/2 20:00								
2011/6/2 22:00								
2011/6/3 0:00								
2011/6/3 2:00								
2011/6/3 4:00								
2011/6/3 6:00								
2011/6/3 8:00								
2011/6/3 10:00								
2011/6/3 12:00								
2011/6/3 14:00								
2011/6/3 16:00								
2011/6/3 18:00								
2011/6/3 20:00								
2011/6/3 22:00								
2011/6/4 0:00								

2011年 06月 2日 15時45分  
 東京電力(株) 原子力発電部  
 NO. 1770

# 2F-2号機

※燃料頂部(TAF)からの水位=炉水位+4200[mm]

時間	炉圧 [MPa (gage)]	炉水位 [mm] 停止時	炉水温度[°C] 給水/スル温度	D/W圧力 [kPa(gage)]	D/W温度 [°C]	S/C圧力 [kPa(abs)]	S/C水位 [mm]	S/C温度 [°C]
2011/6/1 0:00	0.02	5500	24.4	4	26.2	106	1200	24
2011/6/1 2:00	0.02	5500	24.4	4	26.3	106	1200	24
2011/6/1 4:00	0.02	5650	24.4	4	26.3	106	1200	24
2011/6/1 6:00	0.03	5650	24.4	4	26.3	106	1200	24
2011/6/1 8:00	0.03	5650	24.4	4	26.3	106	1200	24
2011/6/1 10:00	0.03	5650	24.4	4	26.2	106	1200	24
2011/6/1 12:00	0.03	5650	24.4	4	26.2	106	1200	24
2011/6/1 14:00	0.04	5650	24.4	4	26.0	105	1200	24
2011/6/1 16:00	0.03	5650	24.5	4	26.0	106	1200	24
2011/6/1 18:00	0.04	5650	24.5	4	26.5	106	1200	24
2011/6/1 20:00	0.04	5650	24.5	4	26.3	106	1200	24
2011/6/1 22:00	0.03	5650	24.6	4	26.3	106	1200	24
2011/6/2 0:00	0.04	5650	24.6	4	26.3	106	1200	24
2011/6/2 2:00	0.03	5650	24.6	4	26.3	106	1200	24
2011/6/2 4:00	0.03	5700	24.6	4	26.3	106	1200	24
2011/6/2 6:00	0.03	5700	24.7	4	26.3	106	1200	24
2011/6/2 8:00	0.03	5700	24.7	4	26.3	106	1200	24
2011/6/2 10:00	0.03	5650	24.7	4	26.2	105	1200	24
2011/6/2 12:00	0.03	5700	24.7	4	26.2	105	1200	24
2011/6/2 14:00								
2011/6/2 16:00								
2011/6/2 18:00								
2011/6/2 20:00								
2011/6/2 22:00								
2011/6/3 0:00								
2011/6/3 2:00								
2011/6/3 4:00								
2011/6/3 6:00								
2011/6/3 8:00								
2011/6/3 10:00								
2011/6/3 12:00								
2011/6/3 14:00								
2011/6/3 16:00								
2011/6/3 18:00								
2011/6/3 20:00								
2011/6/3 22:00								
2011/6/4 0:00								

# 2F-3号機

※燃料頂部(TAF)からの水位=炉水位+4200[mm]

時間	炉圧 [MPa (gage)]	炉水位 [mm] アツフセット	炉水温度[°C] 給水/スル温度	D/W圧力 [kPa(gage)]	D/W温度 [°C]	S/C圧力 [kPa(abs)]	S/C水位 [mm]	S/C温度 [°C]
2011/6/1 0:00	0.00	2495	33.9	9	31.5	110	2100	26
2011/6/1 2:00	0.00	2495	33.8	9	31.6	110	2100	26
2011/6/1 4:00	0.00	2495	33.8	9	31.6	110	2100	26
2011/6/1 6:00	0.00	2495	33.8	9	31.6	110	2100	26
2011/6/1 8:00	0.00	2495	33.8	9	31.6	110	2100	26
2011/6/1 10:00	0.00	2495	33.8	9	31.5	110	2100	26
2011/6/1 12:00	0.00	2495	33.9	9	31.5	110	2100	26
2011/6/1 14:00	0.00	2496	33.9	9	31.5	110	2100	26
2011/6/1 16:00	0.00	2496	34.0	9	31.5	110	2100	26
2011/6/1 18:00	0.00	2496	34.0	9	31.7	110	2100	26
2011/6/1 20:00	0.00	2496	34.1	9	31.5	110	2100	26
2011/6/1 22:00	0.00	2496	34.1	9	31.7	110	2100	26
2011/6/2 0:00	0.00	2496	34.2	9	31.8	110	2100	26
2011/6/2 2:00	0.00	2496	34.2	9	31.7	110	2100	26
2011/6/2 4:00	0.00	2496	34.2	9	31.6	110	2100	26
2011/6/2 6:00	0.00	2496	34.2	9	31.7	110	2100	26
2011/6/2 8:00	0.00	2496	34.2	9	31.6	110	2100	26
2011/6/2 10:00	0.00	2496	34.2	9	31.6	110	2100	26
<b>2011/6/2 12:00</b>	<b>0.00</b>	<b>2496</b>	<b>34.2</b>	<b>9</b>	<b>31.7</b>	<b>110</b>	<b>2100</b>	<b>26</b>
2011/6/2 14:00								
2011/6/2 16:00								
2011/6/2 18:00								
2011/6/2 20:00								
2011/6/2 22:00								
2011/6/3 0:00								
2011/6/3 2:00								
2011/6/3 4:00								
2011/6/3 6:00								
2011/6/3 8:00								
2011/6/3 10:00								
2011/6/3 12:00								
2011/6/3 14:00								
2011/6/3 16:00								
2011/6/3 18:00								
2011/6/3 20:00								
2011/6/3 22:00								
2011/6/4 0:00								

100.1770 1. 27/27

東京電力/関西電力/中部電力

2011年 06月 20日 13時45分

# 2F-4号機

※燃料頂部(TAF)からの水位=炉水位+4200[mm]

時間	炉圧 [MPa (gage)]	炉水位 [mm] アツフセット	炉水温度[°C] 給水/スル温度	D/W圧力 [kPa(gage)]	D/W温度 [°C]	S/C圧力 [kPa(abs)]	S/C水位 [mm]	S/C温度 [°C]
2011/6/1 0:00	0.07	4589	26.7	4	29.1	106	2000	27
2011/6/1 2:00	0.07	4589	26.7	4	28.6	106	2000	27
2011/6/1 4:00	0.07	4589	28.6	4	28.7	106	2000	27
2011/6/1 6:00	0.07	4589	26.7	4	28.8	106	2000	27
2011/6/1 8:00	0.07	4589	26.6	4	28.7	106	2000	27
2011/6/1 10:00	0.07	4589	26.6	4	28.5	106	2000	27
2011/6/1 12:00	0.07	4589	26.7	4	28.7	106	2000	27
2011/6/1 14:00	0.07	4589	26.7	4	28.8	106	2000	27
2011/6/1 16:00	0.07	4589	26.7	4	29.0	106	2000	27
2011/6/1 18:00	0.07	4589	26.7	4	28.7	106	2000	27
2011/6/1 20:00	0.07	4589	26.7	4	28.6	105	2000	27
2011/6/1 22:00	0.07	4589	26.8	4	28.4	106	2000	27
2011/6/2 0:00	0.07	4589	26.8	4	28.7	106	2000	28
2011/6/2 2:00	0.07	4589	26.8	4	28.8	106	2000	28
2011/6/2 4:00	0.07	4589	26.8	4	28.6	106	2000	28
2011/6/2 6:00	0.07	4589	26.9	4	28.7	106	2000	28
2011/6/2 8:00	0.07	4589	26.9	4	28.9	106	2000	28
2011/6/2 10:00	0.07	4589	26.9	4	28.8	105	2000	28
<b>2011/6/2 12:00</b>	<b>0.07</b>	<b>4589</b>	<b>26.9</b>	<b>4</b>	<b>29.0</b>	<b>106</b>	<b>2000</b>	<b>28</b>
2011/6/2 14:00								
2011/6/2 16:00								
2011/6/2 18:00								
2011/6/2 20:00								
2011/6/2 22:00								
2011/6/3 0:00								
2011/6/3 2:00								
2011/6/3 4:00								
2011/6/3 6:00								
2011/6/3 8:00								
2011/6/3 10:00								
2011/6/3 12:00								
2011/6/3 14:00								
2011/6/3 16:00								
2011/6/3 18:00								
2011/6/3 20:00								
2011/6/3 22:00								
2011/6/4 0:00								