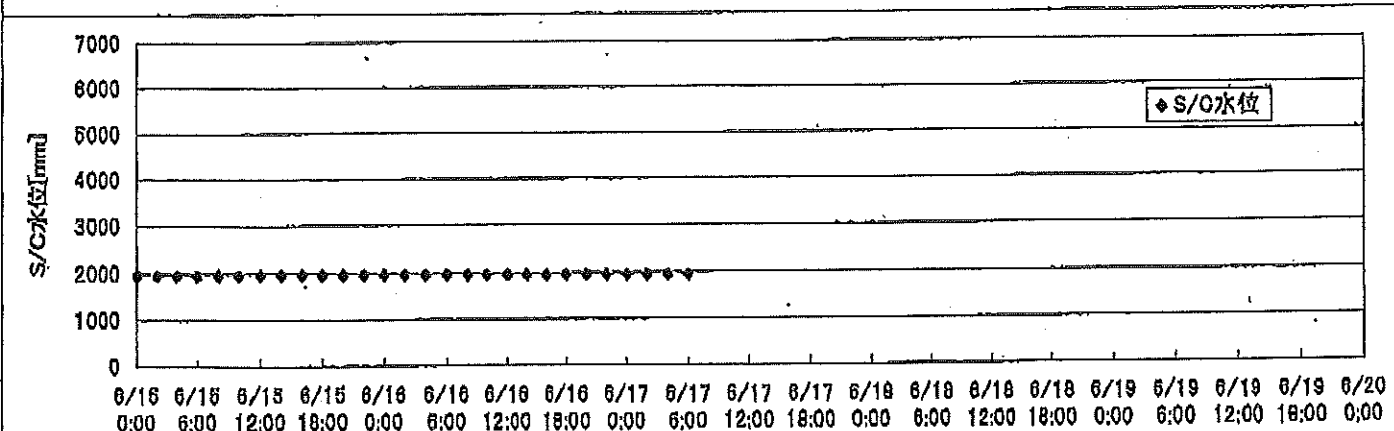
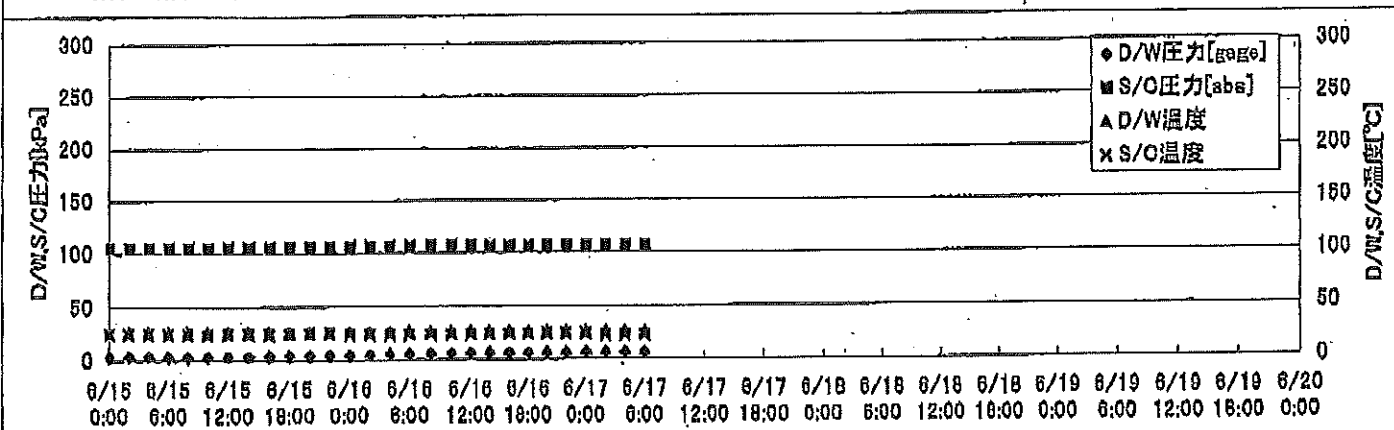
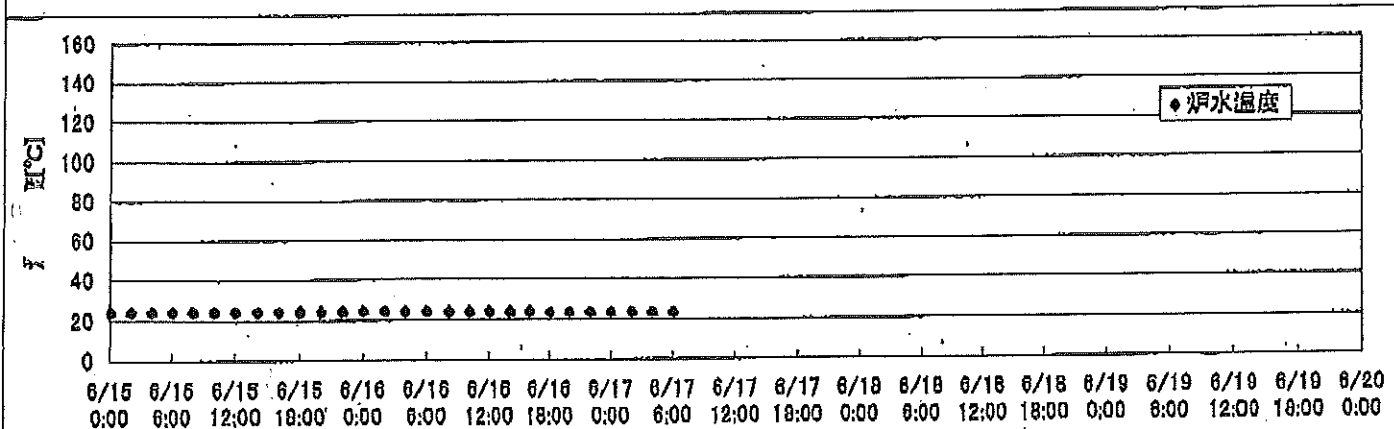
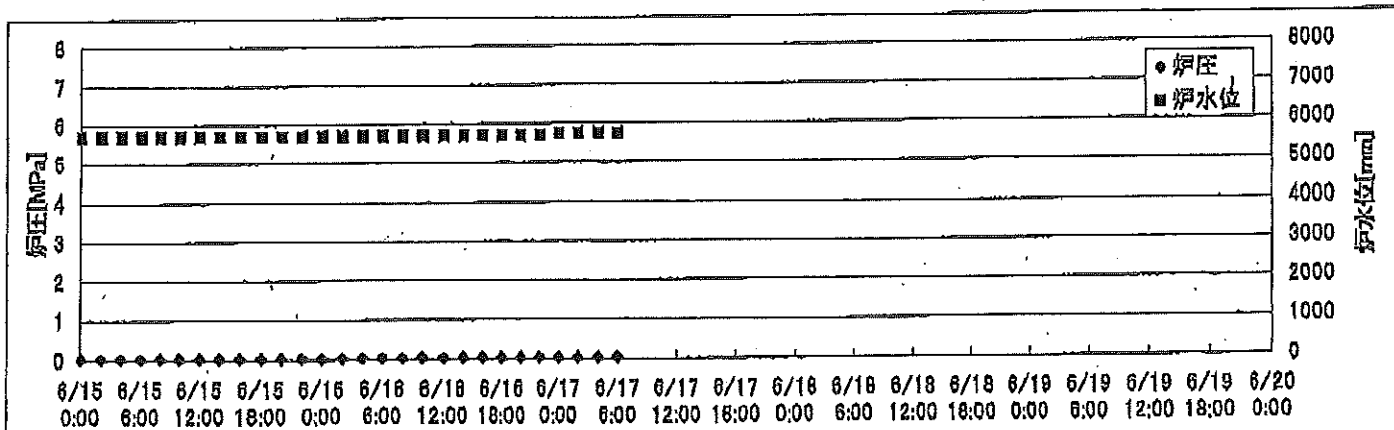
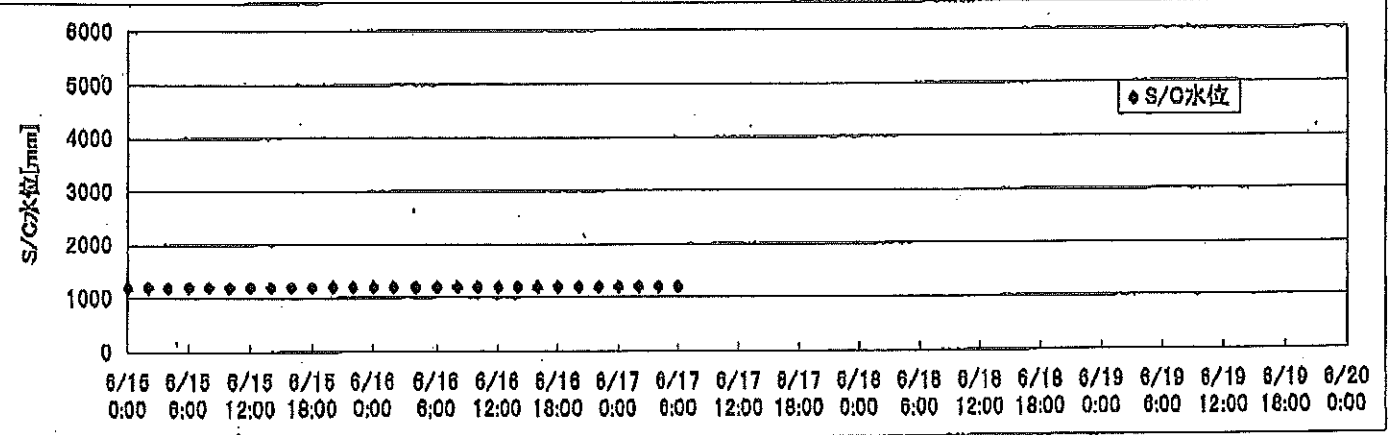
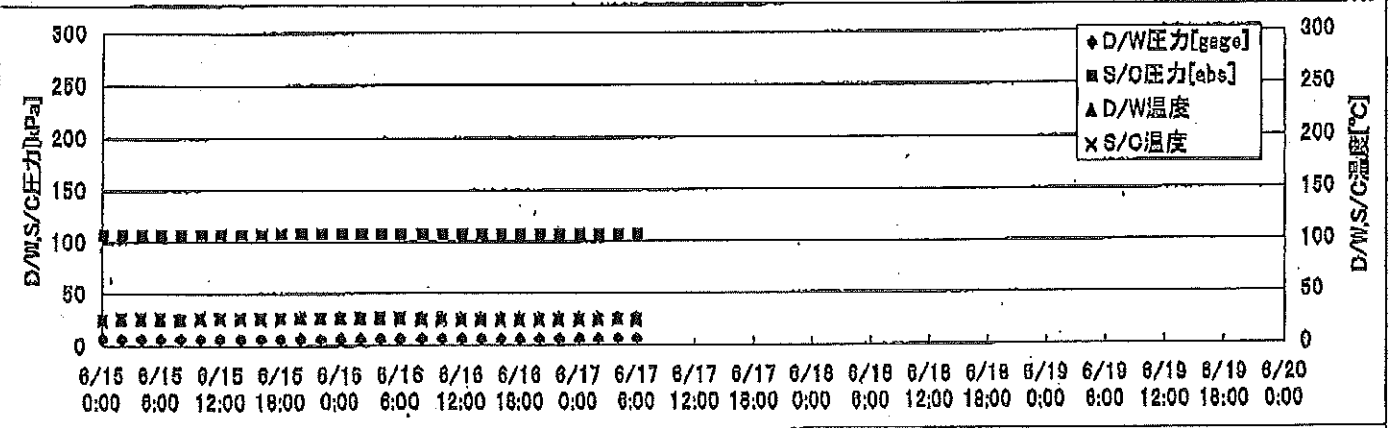
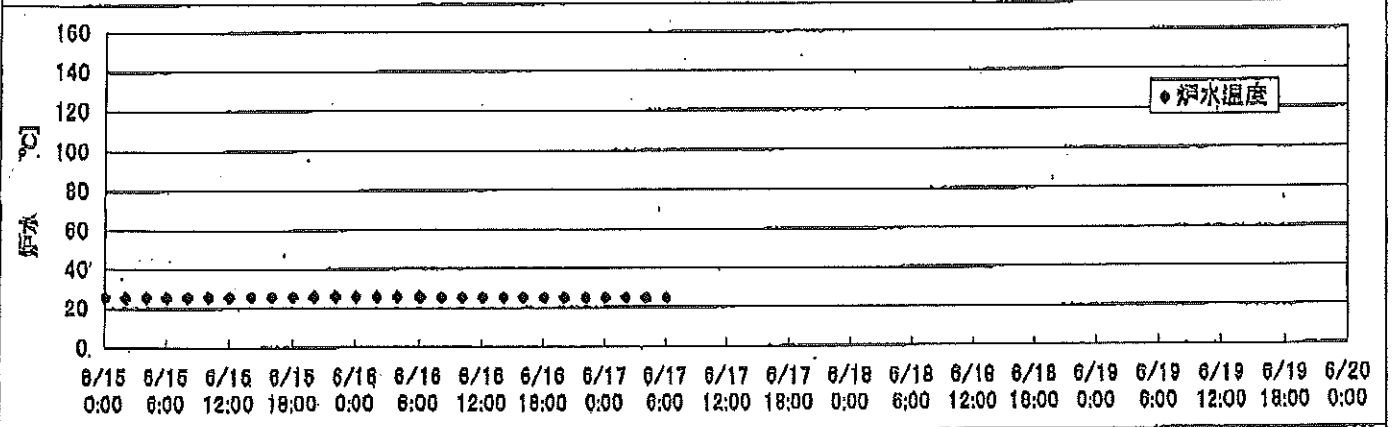
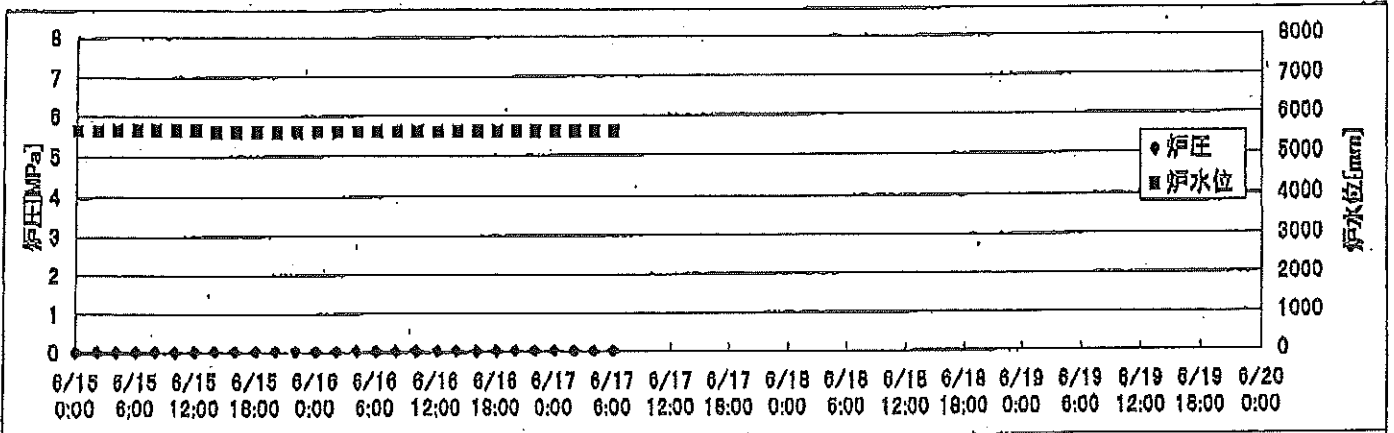


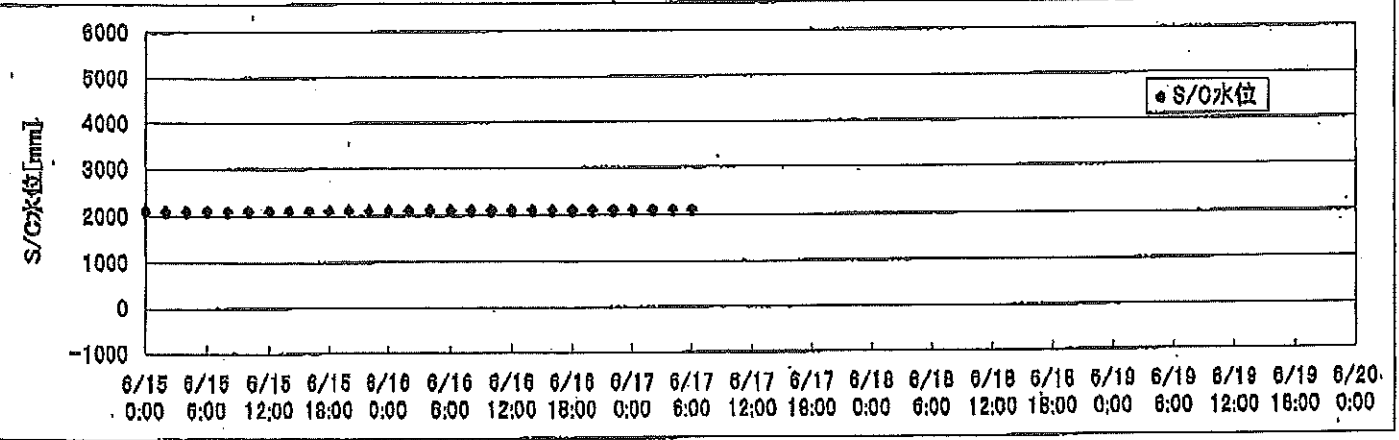
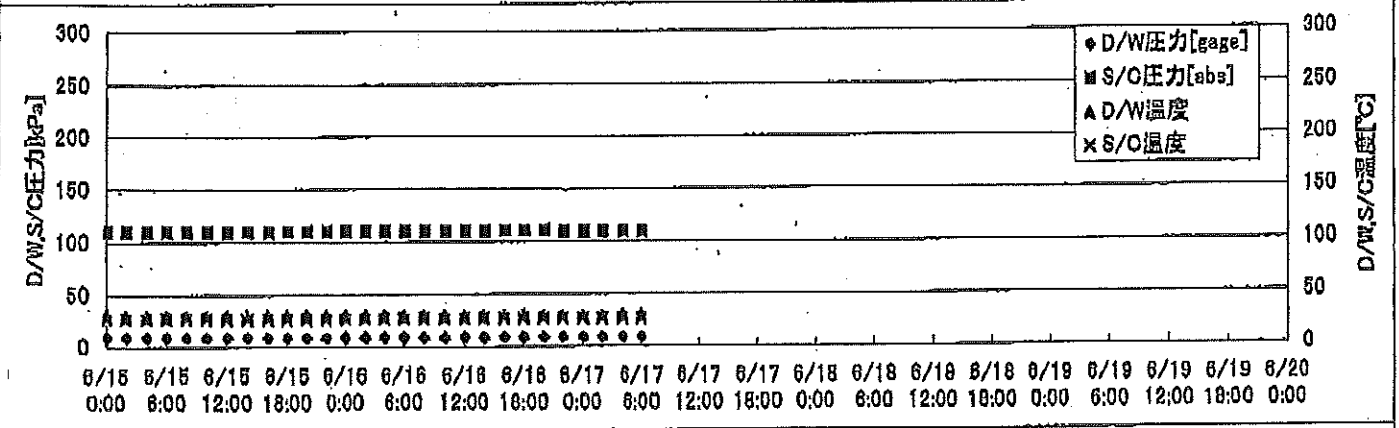
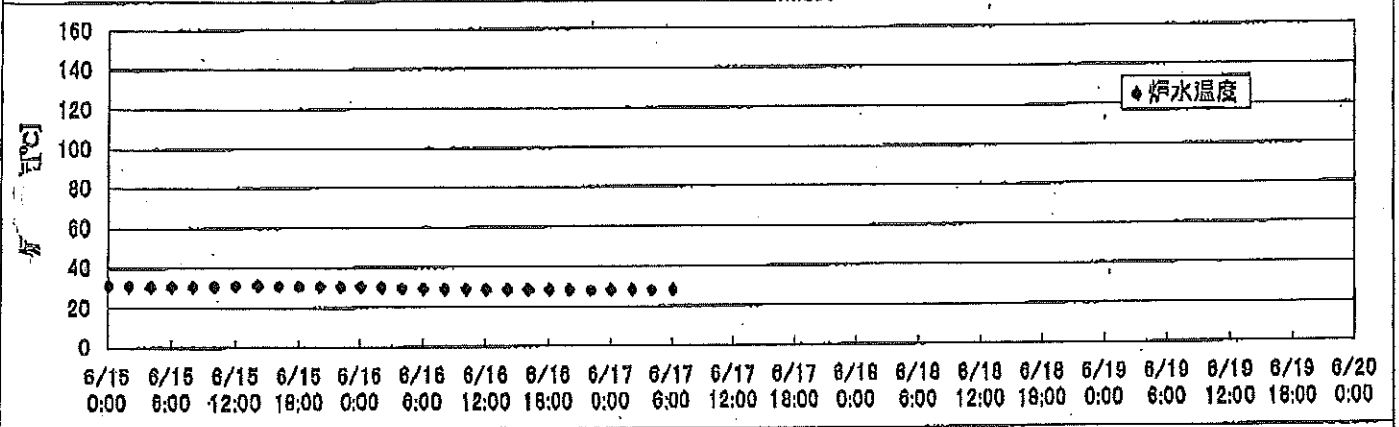
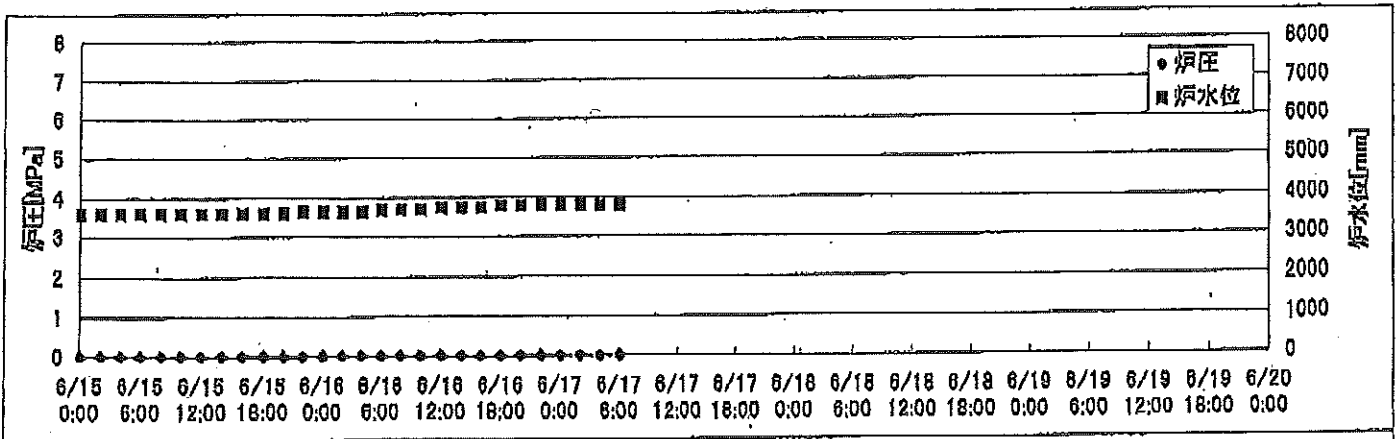
2F-1号機



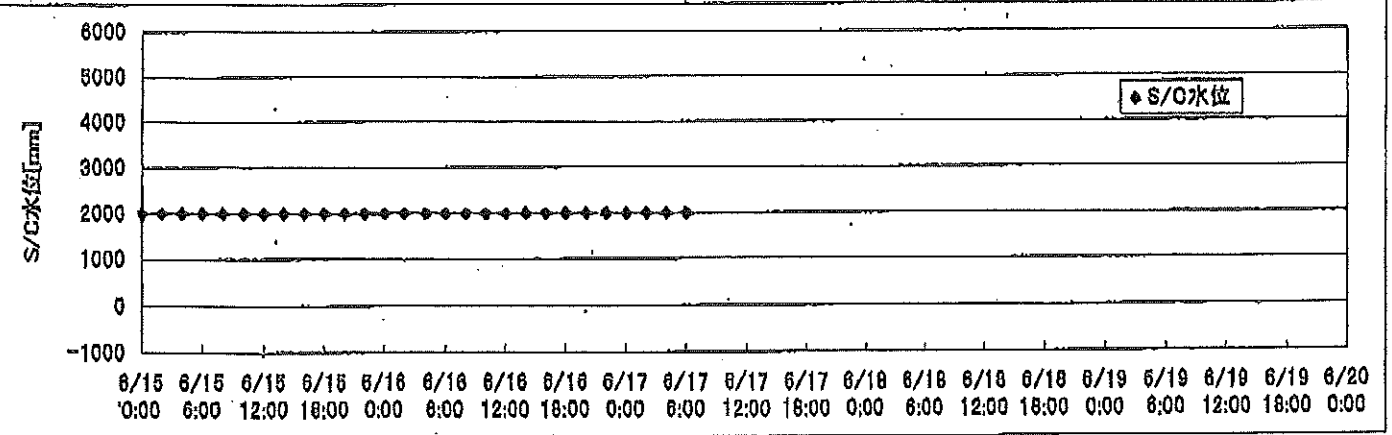
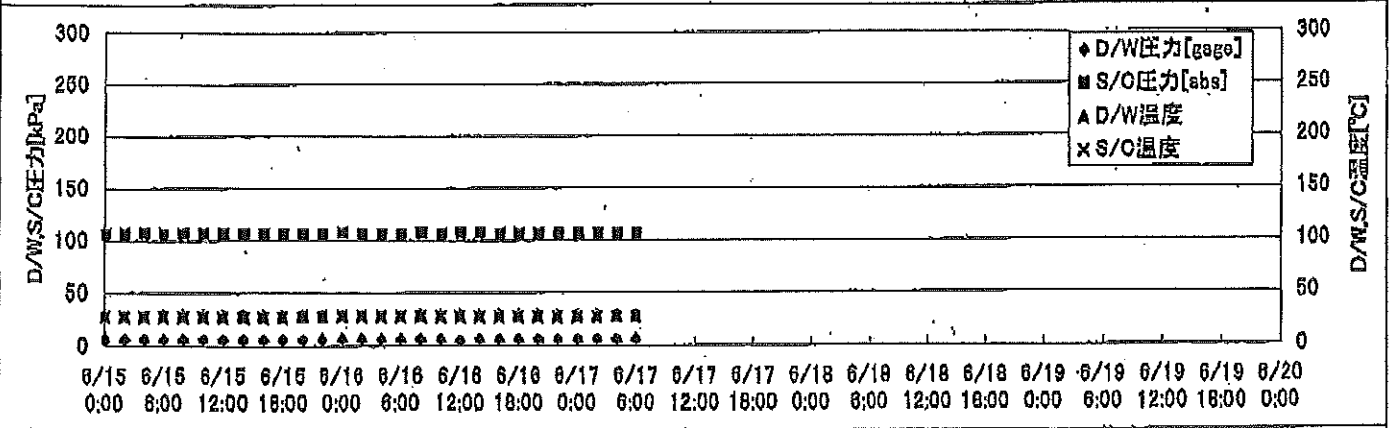
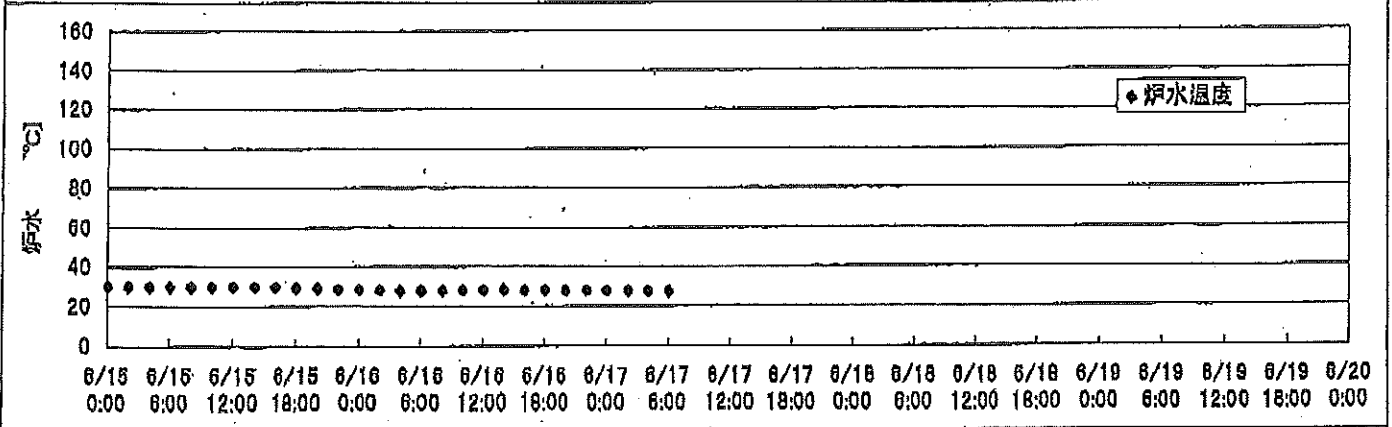
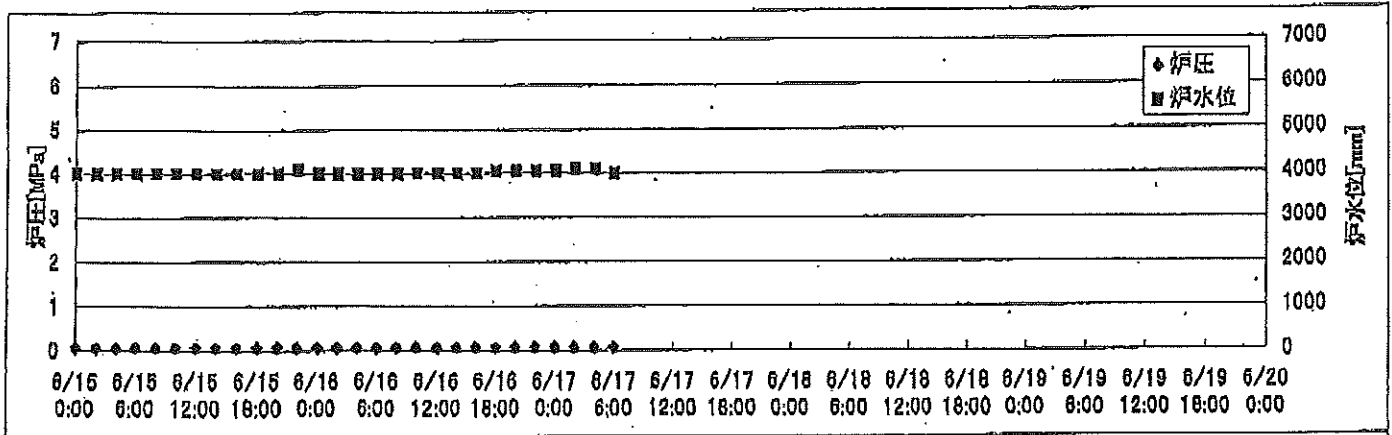
2F-2号機



2F-3号機



2F-4号機



2F-2号機

※燃料頂部(TAF)からの水位=炉水位+4200[mm]

時間	炉圧 [MPa (gage)]	炉水位 [mm] 停止時	炉水温度[°C]	D/W圧力 [kPa(gage)]	D/W温度 [°C]	S/C圧力 [kPa(abs)]	S/C水位 [mm]	S/C温度 [°C]
2011/6/15 0:00	0.03	5650	25.7	7	26.2	107	1200	25
2011/6/15 2:00	0.04	5650	25.8	6	26.2	107	1200	26
2011/6/15 4:00	0.03	5650	25.7	6	26.2	107	1200	26
2011/6/15 6:00	0.04	5650	25.7	6	26.2	107	1200	26
2011/6/15 8:00	0.04	5650	25.7	6	26.2	107	1200	25
2011/6/15 10:00	0.03	5650	25.7	6	26.3	107	1200	26
2011/6/15 12:00	0.04	5650	25.8	6	26.3	107	1200	26
2011/6/15 14:00	0.04	5600	25.9	6	26.3	107	1200	26
2011/6/15 16:00	0.04	5600	25.9	6	26.3	107	1200	26
2011/6/15 18:00	0.04	5600	25.9	6	26.3	107	1200	26
2011/6/15 20:00	0.04	5600	25.9	6	26.3	107	1200	26
2011/6/15 22:00	0.04	5600	26.0	6	26.3	107	1200	26
2011/6/16 0:00	0.03	5600	25.9	6	26.3	107	1200	26
2011/6/16 2:00	0.03	5600	25.8	6	26.3	107	1200	26
2011/6/16 4:00	0.04	5600	25.7	6	26.3	107	1200	26
2011/6/16 6:00	0.03	5600	25.6	6	26.3	107	1200	26
2011/6/16 8:00	0.03	5600	25.5	6	26.3	107	1200	25
2011/6/16 10:00	0.04	5600	25.5	6	26.4	107	1200	25
2011/6/16 12:00	0.04	5600	25.5	6	26.3	107	1200	25
2011/6/16 14:00	0.04	5600	25.3	6	26.3	107	1200	25
2011/6/16 16:00	0.04	5600	25.2	6	26.3	107	1200	25
2011/6/16 18:00	0.04	5600	25.1	6	26.3	107	1200	25
2011/6/16 20:00	0.04	5600	25.1	6	26.4	107	1200	25
2011/6/16 22:00	0.04	5600	25.0	6	26.4	107	1200	25
2011/6/17 0:00	0.03	5600	25.0	6	26.5	107	1200	25
2011/6/17 2:00	0.03	5600	24.9	6	26.4	107	1200	25
2011/6/17 4:00	0.03	5600	24.8	6	26.4	107	1200	25
2011/6/17 6:00	0.03	5600	24.7	6	26.2	107	1200	24
2011/6/17 8:00								
2011/6/17 10:00								
2011/6/17 12:00								
2011/6/17 14:00								
2011/6/17 16:00								
2011/6/17 18:00								
2011/6/17 20:00								
2011/6/17 22:00								
2011/6/18 0:00								

2F-3号機

※燃料頂部(TAF)からの水位=炉水位+4200[mm]

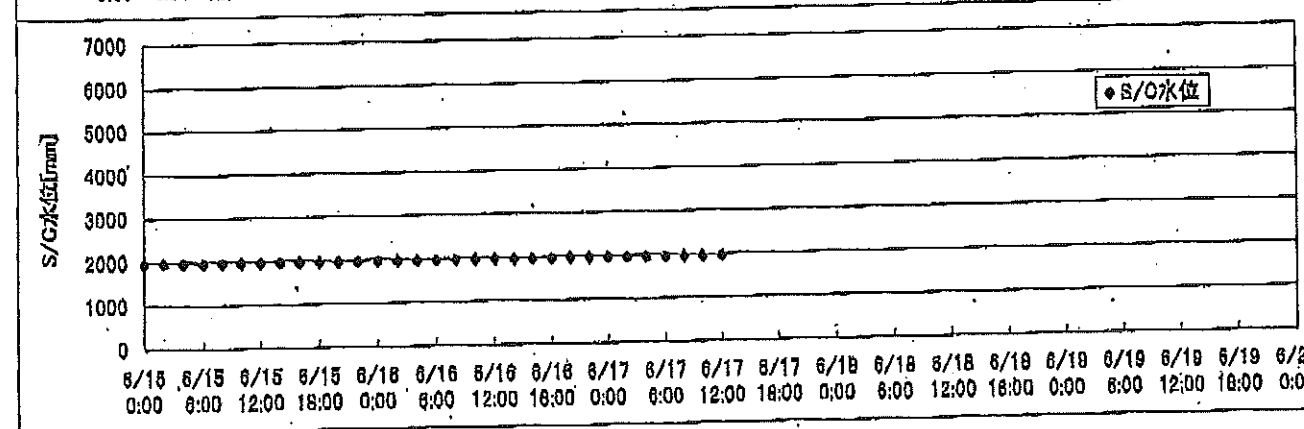
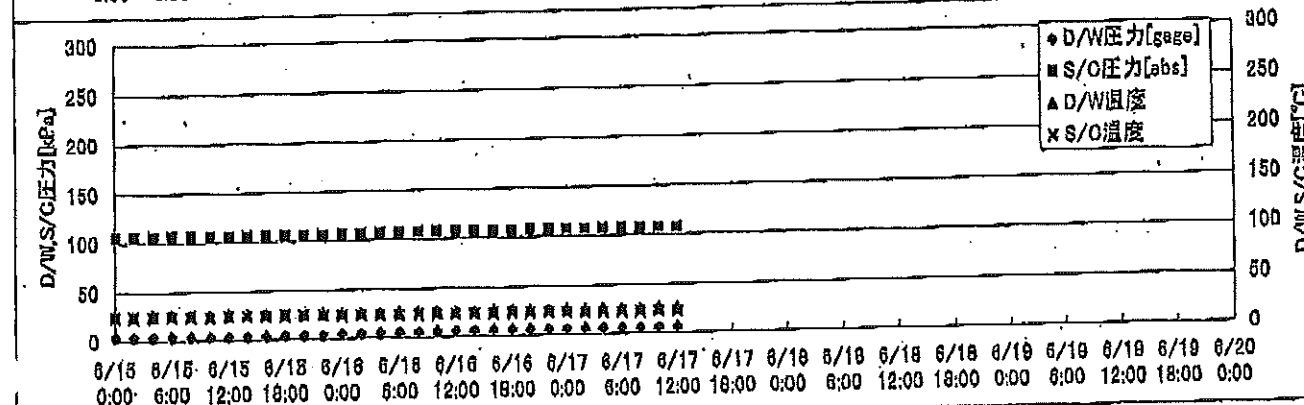
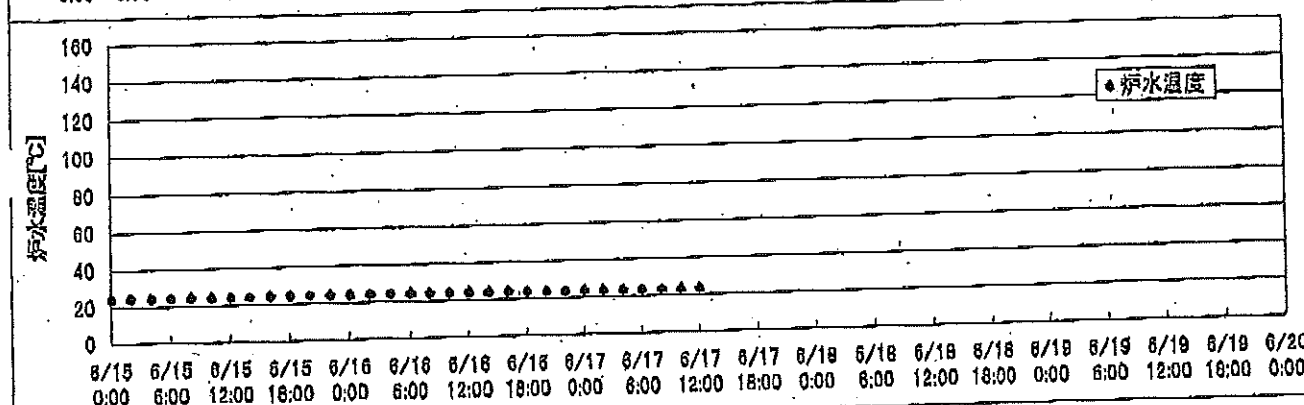
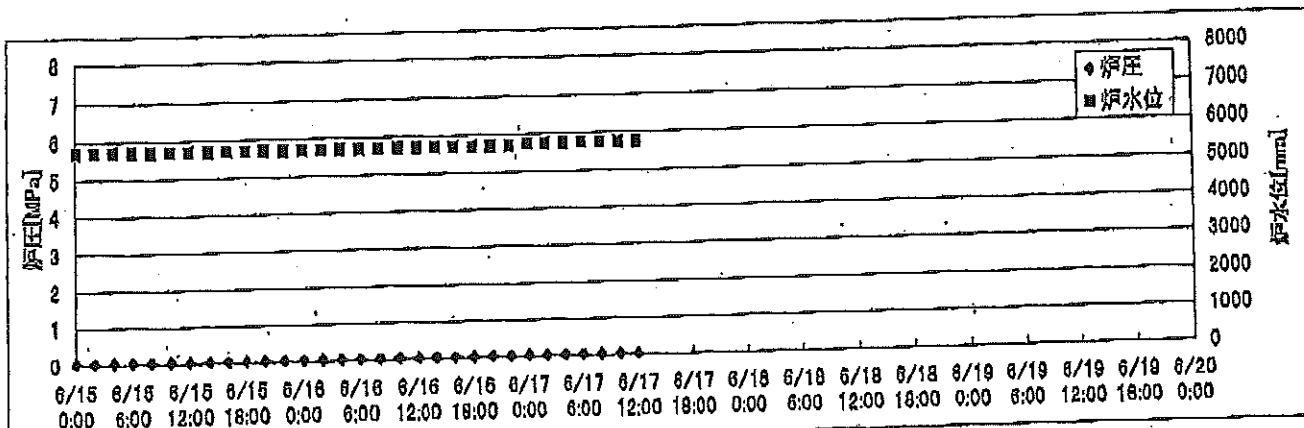
時間	炉圧 [MPa (gage)]	炉水位 [mm] 停止時	炉水温度[°C]	D/W圧力 [kPa(gage)]	D/W温度 [°C]	S/C圧力 [kPa(abs)]	S/C水位 [mm]	S/C温度 [°C]
2011/6/15 0:00	0.02	3600	31.5	10	30.3	110	2100	27
2011/6/15 2:00	0.02	3600	31.3	10	30.2	110	2100	27
2011/6/15 4:00	0.02	3600	31.0	9	30.2	110	2100	27
2011/6/15 6:00	0.02	3600	31.0	9	30.2	110	2100	27
2011/6/15 8:00	0.02	3600	31.0	9	30.2	110	2100	27
2011/6/15 10:00	0.02	3600	31.1	9	30.1	110	2100	27
2011/6/15 12:00	0.02	3600	31.3	9	30.1	110	2100	27
2011/6/15 14:00	0.02	3600	31.4	9	30.1	110	2100	27
2011/6/15 16:00	0.02	3600	31.1	9	30.1	110	2100	27
2011/6/15 18:00	0.02	3600	30.8	9	30.1	110	2100	27
2011/6/15 20:00	0.02	3600	30.7	9	30.1	110	2100	27
2011/6/15 22:00	0.02	3650	30.6	9	30.1	110	2100	27
2011/6/16 0:00	0.02	3650	30.4	9	30.1	110	2100	27
2011/6/16 2:00	0.02	3650	30.1	9	30.1	110	2100	27
2011/6/16 4:00	0.02	3650	29.7	9	30.1	110	2100	27
2011/6/16 6:00	0.02	3700	29.3	9	30.0	110	2100	27
2011/6/16 8:00	0.02	3700	29.1	9	30.0	110	2100	27
2011/6/16 10:00	0.02	3700	29.0	9	30.0	110	2100	27
2011/6/16 12:00	0.02	3750	28.9	9	30.0	110	2100	27
2011/6/16 14:00	0.02	3750	28.8	9	30.0	110	2100	27
2011/6/16 16:00	0.02	3750	28.7	9	30.0	111	2100	27
2011/6/16 18:00	0.02	3800	28.6	9	29.9	111	2100	27
2011/6/16 20:00	0.02	3800	28.5	9	29.8	111	2100	27
2011/6/16 22:00	0.02	3800	28.4	9	29.8	110	2100	27
2011/6/17 0:00	0.02	3800	28.4	9	29.8	110	2100	27
2011/6/17 2:00	0.02	3800	28.3	9	29.8	110	2100	27
2011/6/17 4:00	0.02	3800	28.2	9	29.8	110	2100	27
2011/6/17 6:00	0.02	3800	28.1	9	29.8	110	2100	27
2011/6/17 8:00								
2011/6/17 10:00								
2011/6/17 12:00								
2011/6/17 14:00								
2011/6/17 16:00								
2011/6/17 18:00								
2011/6/17 20:00								
2011/6/17 22:00								
2011/6/18 0:00								

2F-4号機

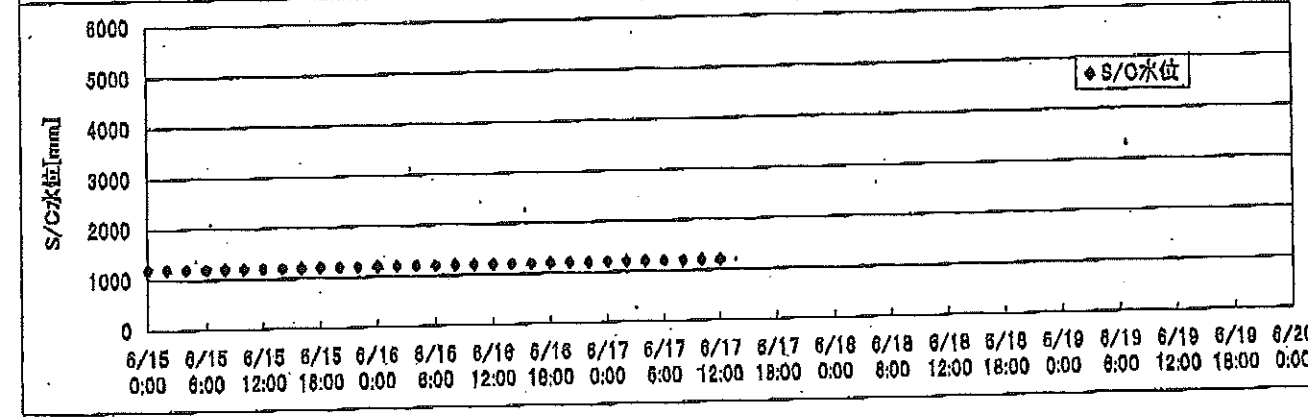
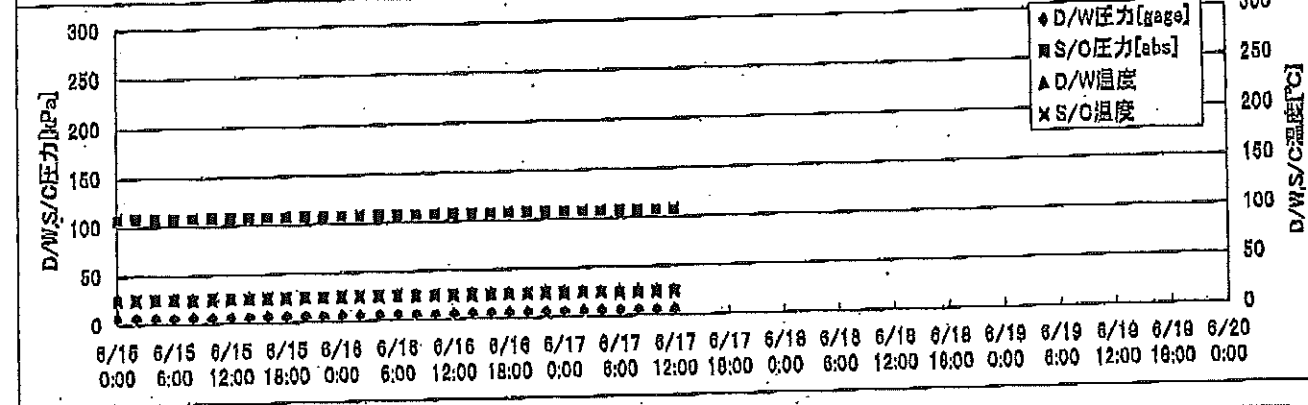
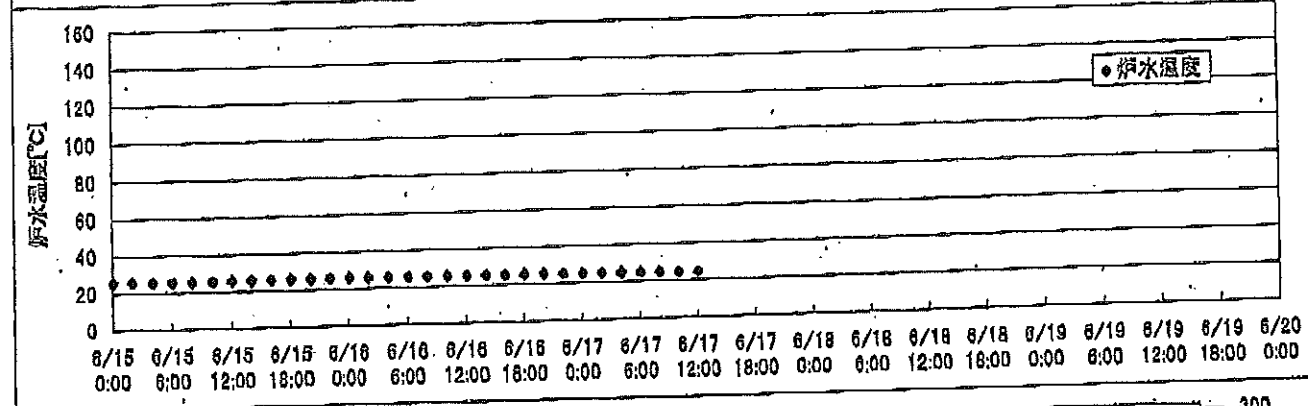
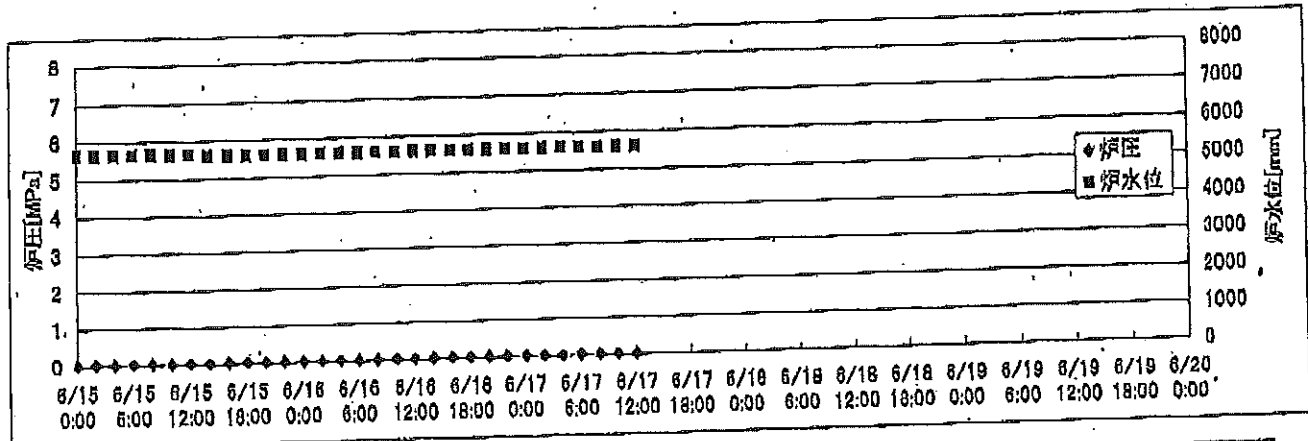
※燃料頂部(TAF)からの水位=炉水位+4200[mm]

時間	炉圧 [MPa (gage)]	炉水位 [mm] 停止時	炉水温度[°C]	D/W圧力 [kPa(gage)]	D/W温度 [°C]	S/C圧力 [kPa(abs)]	S/C水位 [mm]	S/C温度 [°C]
2011/6/15 0:00	0.07	4000	30.3	6	29.3	106	2000	28
2011/6/15 2:00	0.07	4000	30.2	6	29.3	106	2000	28
2011/6/15 4:00	0.07	4000	30.1	6	29.3	106	2000	28
2011/6/15 6:00	0.07	4000	29.9	6	29.3	106	2000	28
2011/6/15 8:00	0.07	4000	29.9	6	29.3	106	2000	28
2011/6/15 10:00	0.07	4000	30.0	6	29.2	106	2000	28
2011/6/15 12:00	0.07	4000	30.1	6	29.3	107	2000	28
2011/6/15 14:00	0.07	4000	30.2	6	29.4	107	2000	28
2011/6/15 16:00	0.07	4000	30.1	6	29.5	107	2000	28
2011/6/15 18:00	0.07	4000	29.5	6	29.3	106	2000	28
2011/6/15 20:00	0.07	4000	29.1	6	29.2	106	2000	28
2011/6/15 22:00	0.07	4100	28.9	6	29.2	106	2000	28
2011/6/16 0:00	0.07	4000	28.7	6	29.3	107	2000	28
2011/6/16 2:00	0.07	4000	28.3	6	29.3	106	2000	28
2011/6/16 4:00	0.07	4000	28.0	6	29.3	106	2000	28
2011/6/16 6:00	0.07	4000	27.9	6	29.2	106	2000	28
2011/6/16 8:00	0.07	4000	28.0	6	29.2	107	2000	28
2011/6/16 10:00	0.07	4000	28.2	6	29.2	106	2000	28
2011/6/16 12:00	0.07	4000	28.3	5	29.2	107	2000	28
2011/6/16 14:00	0.07	4000	28.3	6	29.3	107	2000	28
2011/6/16 16:00	0.07	4000	28.2	6	29.2	106	2000	28
2011/6/16 18:00	0.07	4050	28.1	6	29.3	106	2000	28
2011/6/16 20:00	0.07	4050	28.0	6	29.1	106	2000	28
2011/6/16 22:00	0.07	4050	28.0	6	29.2	106	2000	28
2011/6/17 0:00	0.07	4050	27.9	6	29.1	107	2000	28
2011/6/17 2:00	0.07	4100	27.8	6	29.0	106	2000	28
2011/6/17 4:00	0.07	4100	27.7	6	29.1	106	2000	28
2011/6/17 6:00	0.07	4000	27.6	6	29.2	107	2000	28
2011/6/17 8:00								
2011/6/17 10:00								
2011/6/17 12:00								
2011/6/17 14:00								
2011/6/17 16:00								
2011/6/17 18:00								
2011/6/17 20:00								
2011/6/17 22:00								
2011/6/18 0:00								

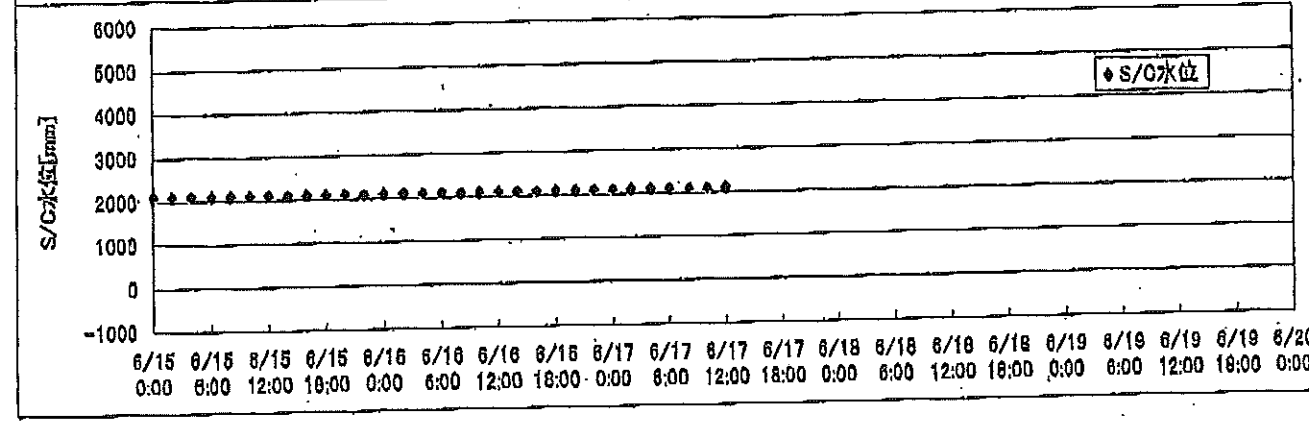
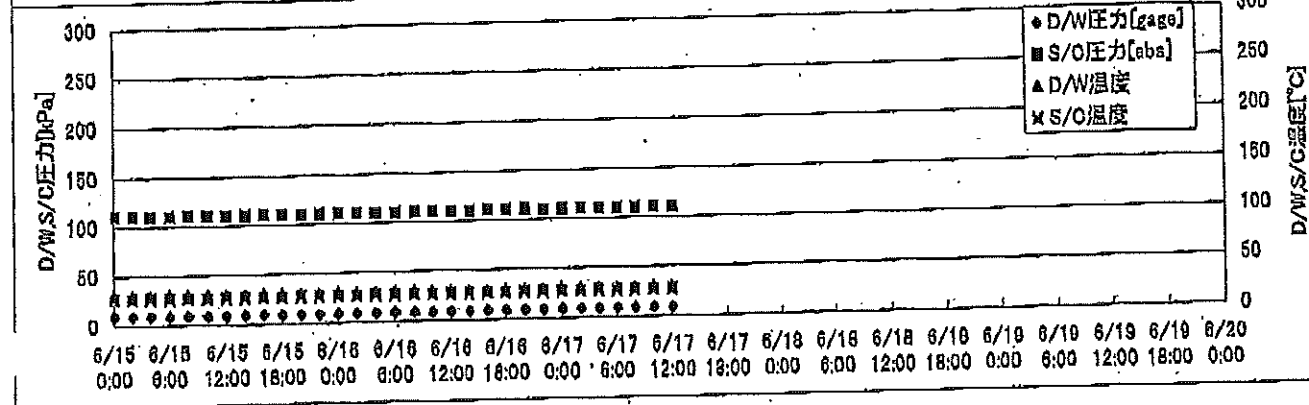
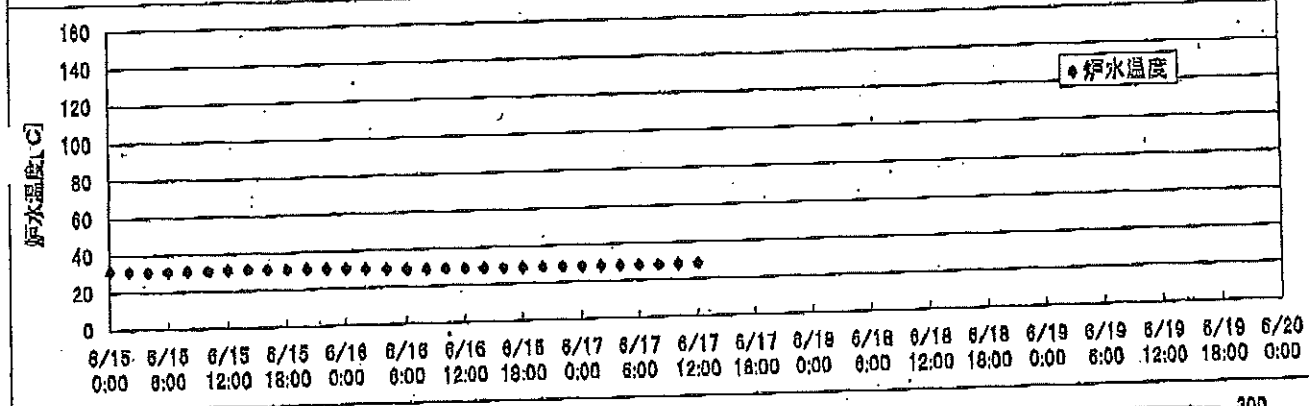
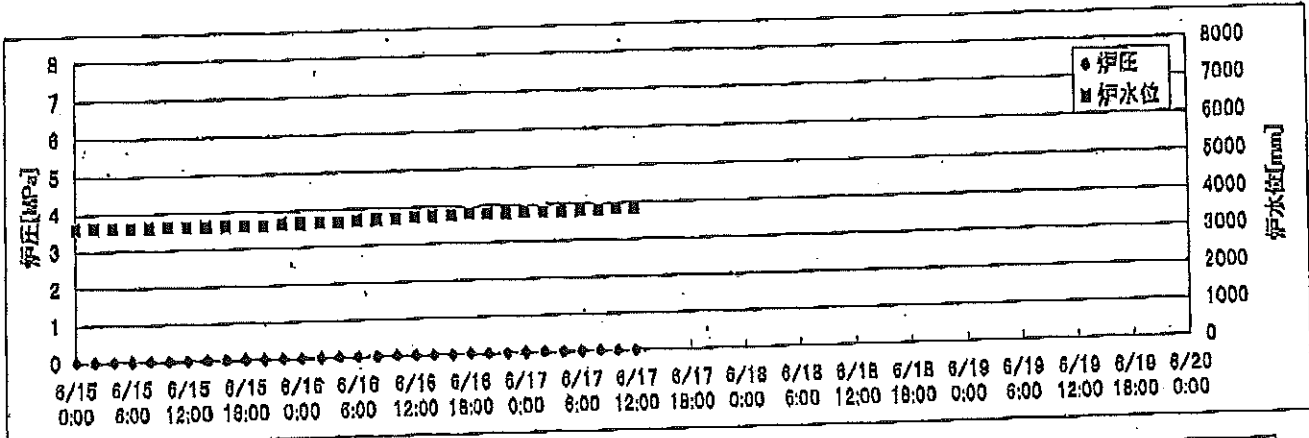
2F-1号機



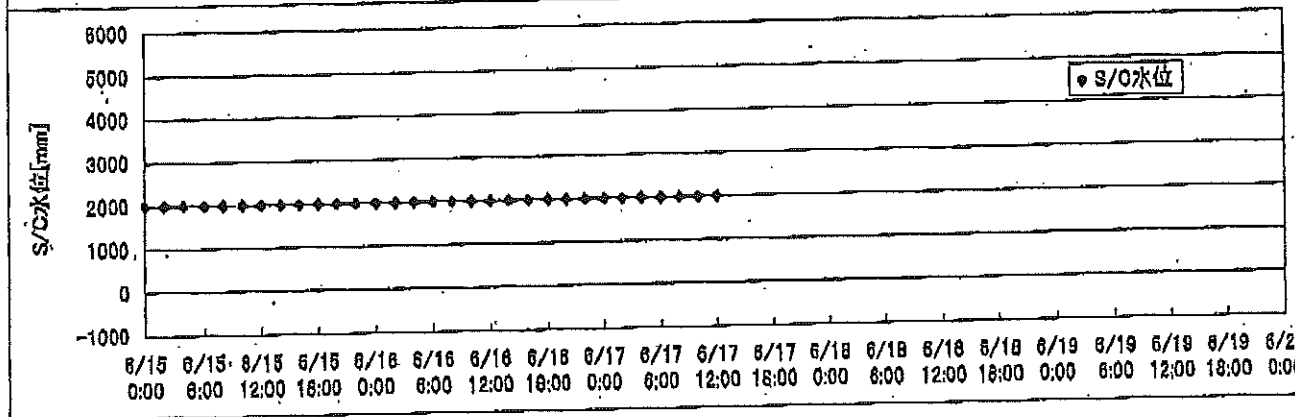
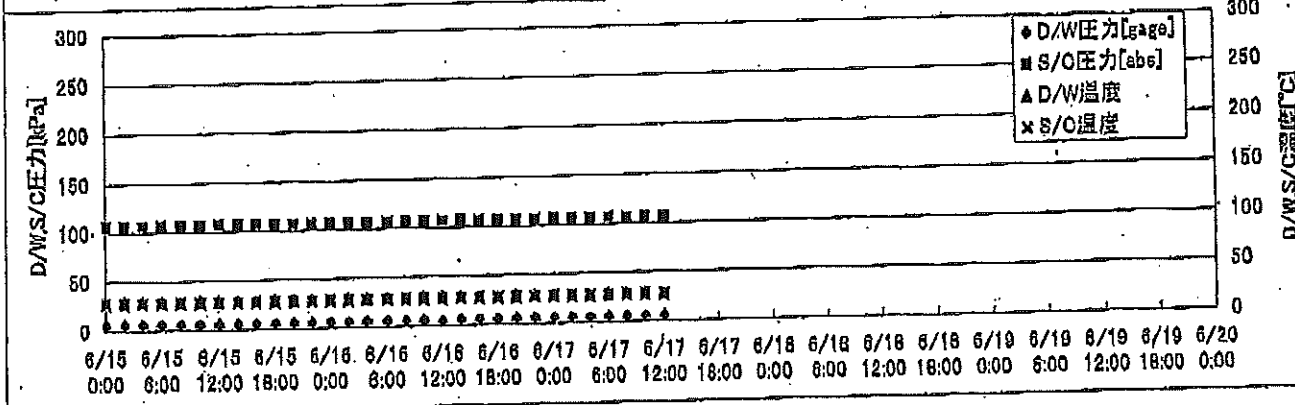
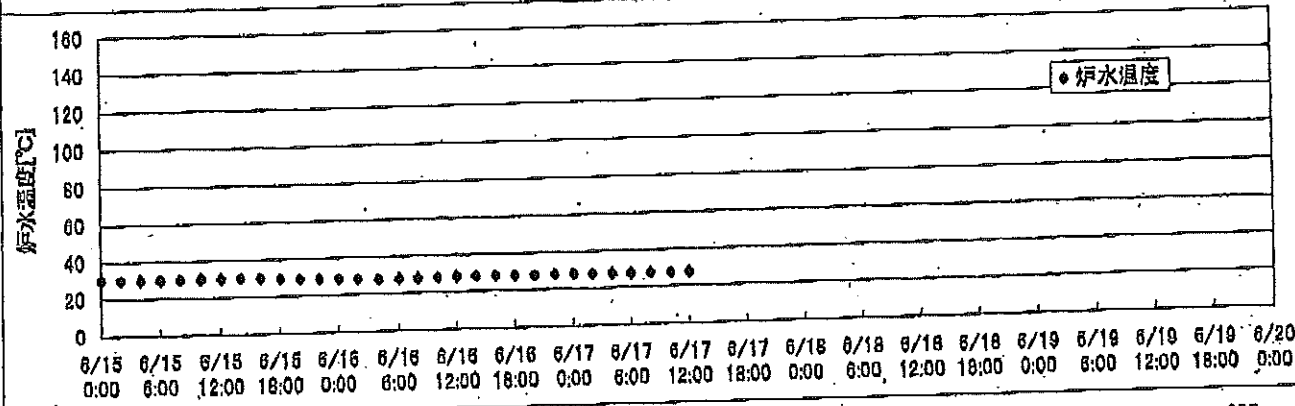
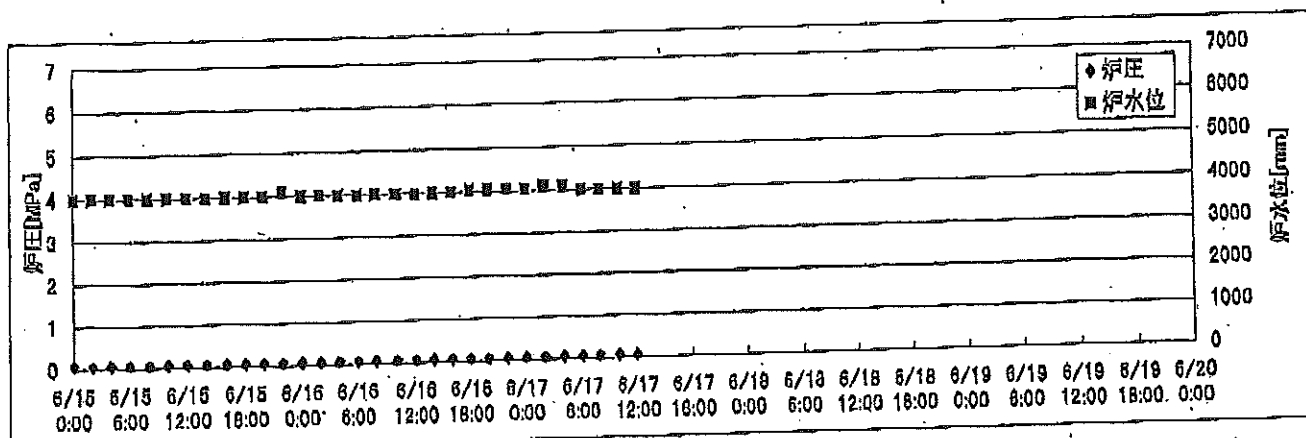
2F-2号機



2F-3号機



2F-4号機



2F-1号機

※燃料頂部(TAF)からの水位=炉水位+4200[mm]

時間	炉圧 [MPa (gage)]	炉水位 [mm] 停止時	炉水温度[°C]	D/W圧力 [kPa(gage)]	D/W温度 [°C]	S/C圧力 [kPa(abs)]	S/C水位 [mm]	S/C温度 [°C]
2011/6/16 0:00	0.05	5700	24.4	4	26.1	106	1961	24
2011/6/16 2:00	0.05	5700	24.4	5	26.1	106	1961	24
2011/6/16 4:00	0.05	5700	24.3	5	26.1	106	1960	24
2011/6/16 6:00	0.05	5700	24.2	5	26.1	106	1960	24
2011/6/16 8:00	0.05	5700	24.1	5	26.1	107	1960	24
2011/6/16 10:00	0.05	5700	24.1	5	26.1	107	1960	24
2011/6/16 12:00	0.05	5700	24.1	6	26.1	107	1960	24
2011/6/16 14:00	0.05	5700	23.9	6	26.1	106	1958	24
2011/6/16 16:00	0.05	5700	23.9	6	26.1	106	1958	24
2011/6/16 18:00	0.05	5700	23.7	6	26.1	106	1958	24
2011/6/16 20:00	0.05	5700	23.6	6	26.2	107	1958	24
2011/6/16 22:00	0.05	5700	23.6	6	26.1	107	1957	24
2011/6/17 0:00	0.05	5750	23.5	6	26.1	107	1958	24
2011/6/17 2:00	0.05	5750	23.5	6	26.0	107	1956	23
2011/6/17 4:00	0.05	5750	23.4	6	26.1	107	1956	23
2011/6/17 6:00	0.05	5750	23.4	6	26.0	107	1956	23
2011/6/17 8:00	0.05	5750	23.3	6	26.0	107	1956	23
2011/6/17 10:00	0.05	5750	23.3	6	26.0	107	1956	23
2011/6/17 12:00	0.05	5750	23.4	6	26.0	107	1956	23
2011/6/17 14:00								
2011/6/17 16:00								
2011/6/17 18:00								
2011/6/17 20:00								
2011/6/17 22:00								
2011/6/18 0:00								
2011/6/18 2:00								
2011/6/18 4:00								
2011/6/18 6:00								
2011/6/18 8:00								
2011/6/18 10:00								
2011/6/18 12:00								
2011/6/18 14:00								
2011/6/18 16:00								
2011/6/18 18:00								
2011/6/18 20:00								
2011/6/18 22:00								

2F-2号機

※燃料頂部(TAF)からの水位=炉水位+4200[mm]

時間	炉圧 [MPa (gage)]	炉水位 [mm] 停止時	炉水温度[°C]	D/W圧力 [kPa(gage)]	D/W温度 [°C]	S/C圧力 [kPa(abs)]	S/C水位 [mm]	S/C温度 [°C]
2011/6/16 0:00	0.03	5600	25.9	6	26.3	107	1200	26
2011/6/16 2:00	0.03	5600	25.8	6	26.3	107	1200	26
2011/6/16 4:00	0.04	5600	25.7	6	26.3	107	1200	26
2011/6/16 6:00	0.03	5600	25.6	6	26.3	107	1200	26
2011/6/16 8:00	0.03	5600	25.5	6	26.3	107	1200	25
2011/6/16 10:00	0.04	5600	25.5	6	26.4	107	1200	25
2011/6/16 12:00	0.04	5600	25.5	6	26.3	107	1200	25
2011/6/16 14:00	0.04	5600	25.3	6	26.3	107	1200	25
2011/6/16 16:00	0.04	5600	25.2	6	26.3	107	1200	25
2011/6/16 18:00	0.04	5600	25.1	6	26.3	107	1200	25
2011/6/16 20:00	0.04	5600	25.1	6	26.4	107	1200	25
2011/6/16 22:00	0.04	5600	25.0	6	26.4	107	1200	25
2011/6/17 0:00	0.03	5600	25.0	6	26.5	107	1200	25
2011/6/17 2:00	0.03	5600	24.9	6	26.4	107	1200	25
2011/6/17 4:00	0.03	5600	24.8	6	26.4	107	1200	25
2011/6/17 6:00	0.03	5600	24.7	6	26.2	107	1200	24
2011/6/17 8:00	0.03	5600	24.7	6	26.4	107	1200	24
2011/6/17 10:00	0.03	5600	24.6	6	26.2	107	1200	24
2011/6/17 12:00	0.03	5600	24.6	6	26.3	107	1200	24
2011/6/17 14:00								
2011/6/17 16:00								
2011/6/17 18:00								
2011/6/17 20:00								
2011/6/17 22:00								
2011/6/18 0:00								
2011/6/18 2:00								
2011/6/18 4:00								
2011/6/18 6:00								
2011/6/18 8:00								
2011/6/18 10:00								
2011/6/18 12:00								
2011/6/18 14:00								
2011/6/18 16:00								
2011/6/18 18:00								
2011/6/18 20:00								
2011/6/18 22:00								

2F-3号機

※燃料頂部(TAF)からの水位=炉水位+4200[mm]

時間	炉圧 [MPa (gage)]	炉水位 [mm] 停止時	炉水温度[°C]	D/W圧力 [kPa(gage)]	D/W温度 [°C]	S/C圧力 [kPa(abs)]	S/C水位 [mm]	S/C温度 [°C]
2011/6/16 0:00	0.02	3650	30.4	9	30.1	110	2100	27
2011/6/16 2:00	0.02	3650	30.1	9	30.1	110	2100	27
2011/6/16 4:00	0.02	3650	29.7	9	30.1	110	2100	27
2011/6/16 6:00	0.02	3700	29.3	9	30.0	110	2100	27
2011/6/16 8:00	0.02	3700	29.1	9	30.0	110	2100	27
2011/6/16 10:00	0.02	3700	29.0	9	30.0	110	2100	27
2011/6/16 12:00	0.02	3750	28.9	9	30.0	110	2100	27
2011/6/16 14:00	0.02	3750	28.8	9	30.0	110	2100	27
2011/6/16 16:00	0.02	3750	28.7	9	30.0	111	2100	27
2011/6/16 18:00	0.02	3800	28.6	9	29.9	111	2100	27
2011/6/16 20:00	0.02	3800	28.5	9	29.8	111	2100	27
2011/6/16 22:00	0.02	3800	28.4	9	29.8	110	2100	27
2011/6/17 0:00	0.02	3800	28.4	9	29.8	110	2100	27
2011/6/17 2:00	0.02	3800	28.3	9	29.8	110	2100	27
2011/6/17 4:00	0.02	3800	28.2	9	29.8	110	2100	27
2011/6/17 6:00	0.02	3800	28.1	9	29.8	110	2100	27
2011/6/17 8:00	0.02	3800	28.1	9	29.8	110	2100	27
2011/6/17 10:00	0.02	3850	28.1	9	29.9	111	2100	27
2011/6/17 12:00	0.02	3850	28.2	9	29.8	110	2100	27
2011/6/17 14:00								
2011/6/17 16:00								
2011/6/17 18:00								
2011/6/17 20:00								
2011/6/17 22:00								
2011/6/18 0:00								
2011/6/18 2:00								
2011/6/18 4:00								
2011/6/18 6:00								
2011/6/18 8:00								
2011/6/18 10:00								
2011/6/18 12:00								
2011/6/18 14:00								
2011/6/18 16:00								
2011/6/18 18:00								
2011/6/18 20:00								
2011/6/18 22:00								

2F-4号機

※燃料頂部(TAF)からの水位=炉水位+4200[mm]

時間	炉圧 [MPa (gage)]	炉水位 [mm] 停止時	炉水温度[°C]	D/W圧力 [kPa(gage)]	D/W温度 [°C]	S/C圧力 [kPa(abs)]	S/C水位 [mm]	S/C温度 [°C]
2011/6/16 0:00	0.07	4000	28.7	6	29.3	107	2000	28
2011/6/16 2:00	0.07	4000	28.3	6	29.3	106	2000	28
2011/6/16 4:00	0.07	4000	28.0	6	29.3	106	2000	28
2011/6/16 6:00	0.07	4000	27.9	6	29.2	106	2000	28
2011/6/16 8:00	0.07	4000	28.0	6	29.2	107	2000	28
2011/6/16 10:00	0.07	4000	28.2	6	29.2	106	2000	28
2011/6/16 12:00	0.07	4000	28.3	5	29.2	107	2000	28
2011/6/16 14:00	0.07	4000	28.3	6	29.3	107	2000	28
2011/6/16 16:00	0.07	4000	28.2	6	29.2	106	2000	28
2011/6/16 18:00	0.07	4050	28.1	6	29.3	106	2000	28
2011/6/16 20:00	0.07	4050	28.0	6	29.1	106	2000	28
2011/6/16 22:00	0.07	4050	28.0	6	29.2	106	2000	28
2011/6/17 0:00	0.07	4050	27.9	6	29.1	107	2000	28
2011/6/17 2:00	0.07	4100	27.8	6	29.0	106	2000	28
2011/6/17 4:00	0.07	4100	27.7	6	29.1	106	2000	28
2011/6/17 6:00	0.07	4000	27.6	6	29.2	107	2000	28
2011/6/17 8:00	0.07	4000	27.5	6	29.1	106	2000	28
2011/6/17 10:00	0.07	4000	27.4	6	29.2	106	2000	28
2011/6/17 12:00	0.07	4000	27.5	6	29.0	106	2000	28
2011/6/17 14:00								
2011/6/17 16:00								
2011/6/17 18:00								
2011/6/17 20:00								
2011/6/17 22:00								
2011/6/18 0:00								
2011/6/18 2:00								
2011/6/18 4:00								
2011/6/18 6:00								
2011/6/18 8:00								
2011/6/18 10:00								
2011/6/18 12:00								
2011/6/18 14:00								
2011/6/18 16:00								
2011/6/18 18:00								
2011/6/18 20:00								
2011/6/18 22:00								