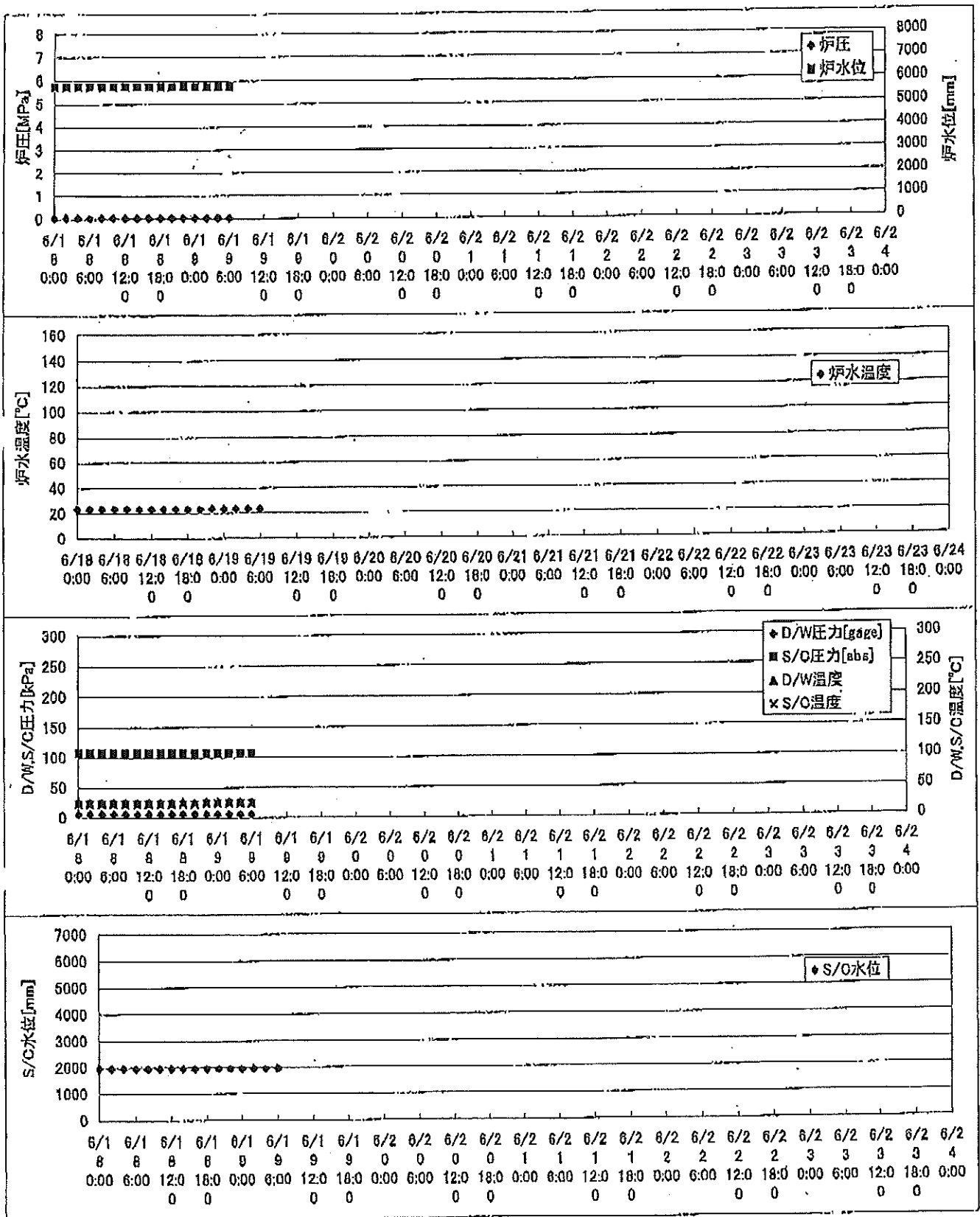
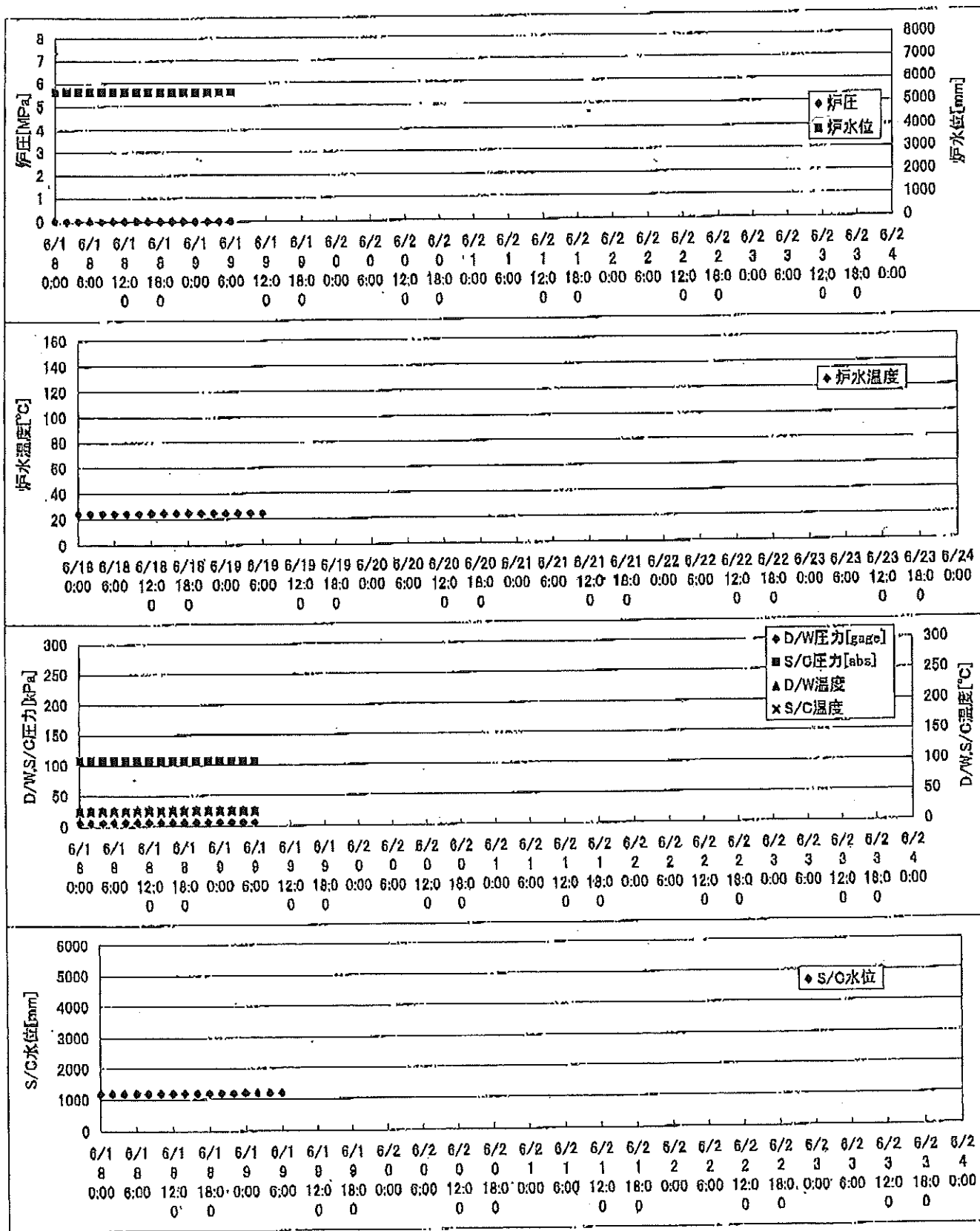


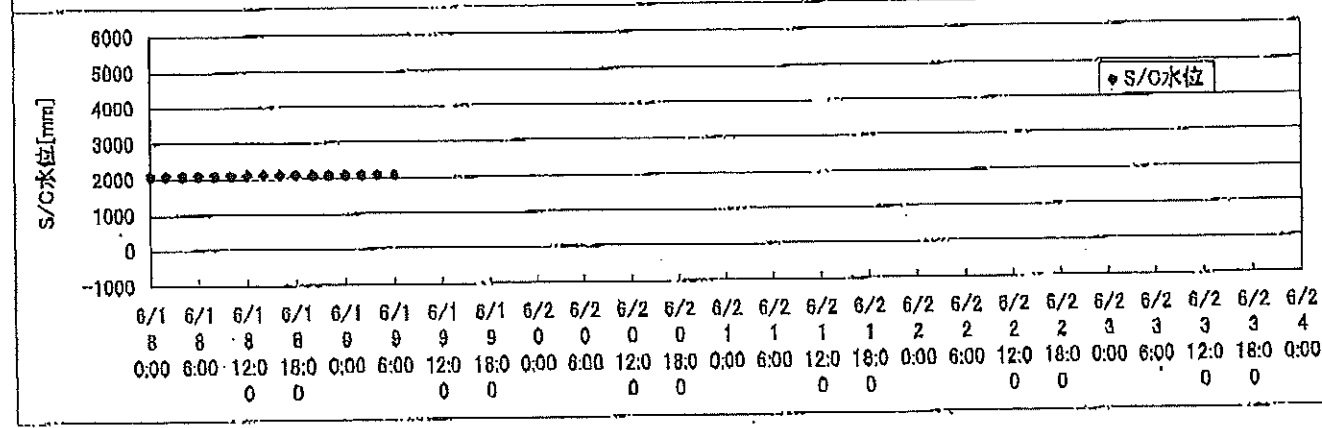
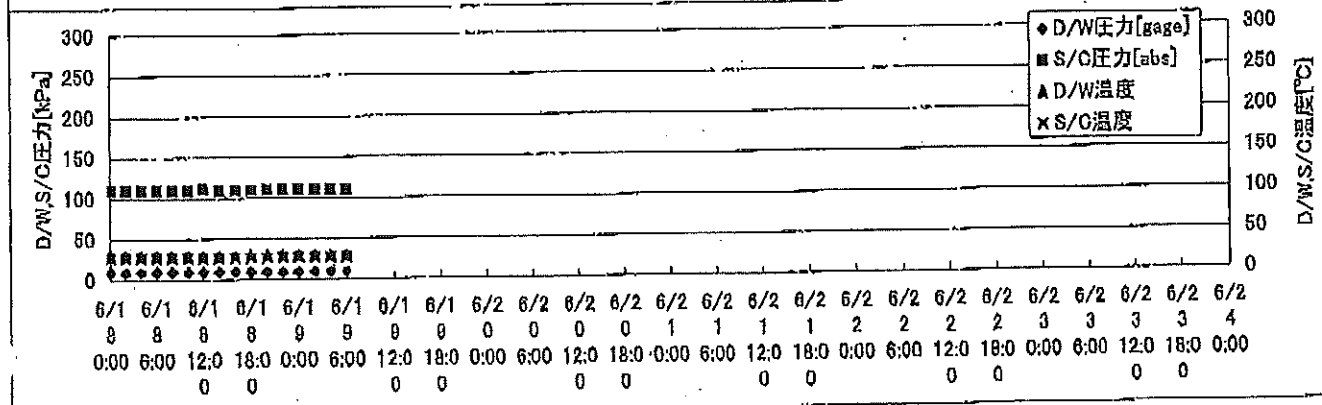
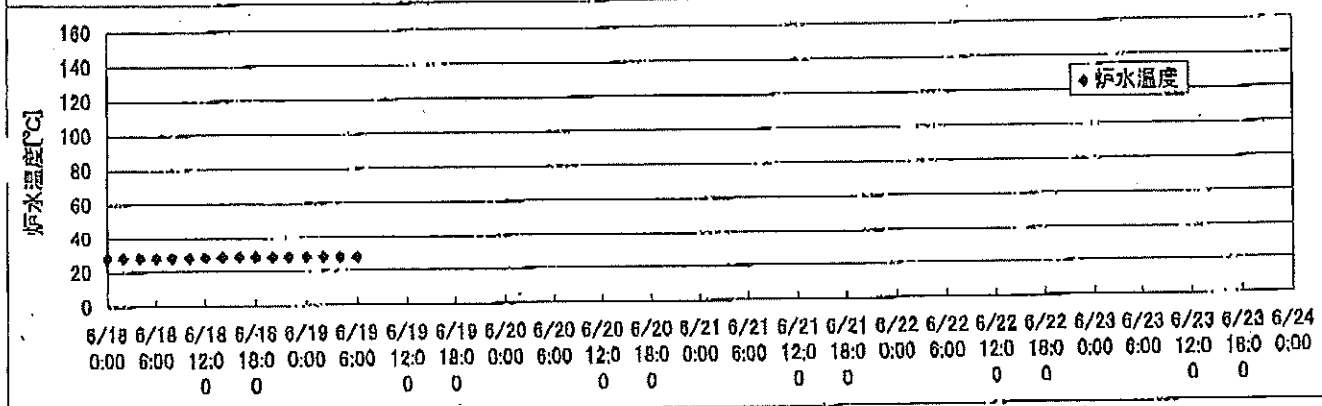
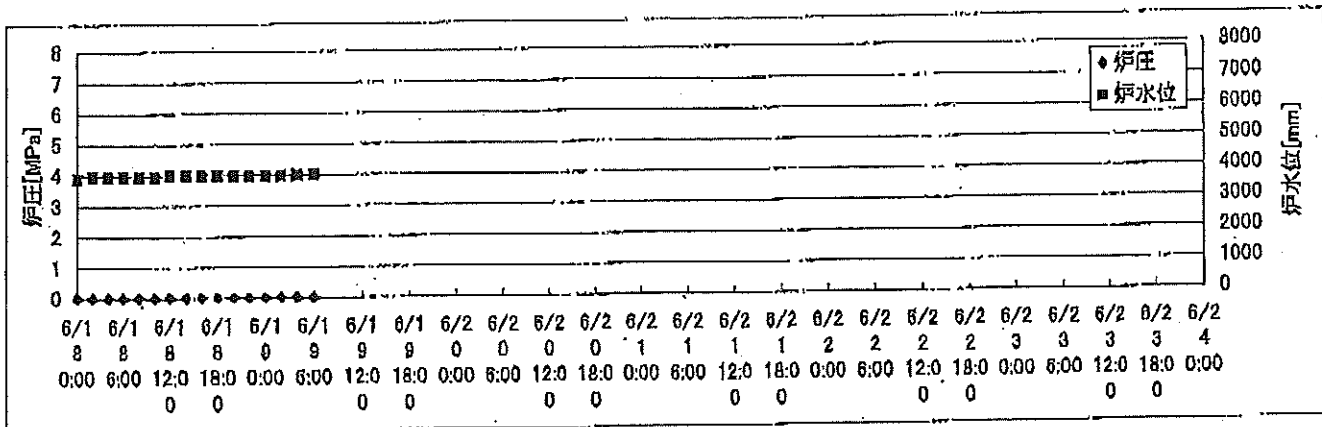
2F-1号機



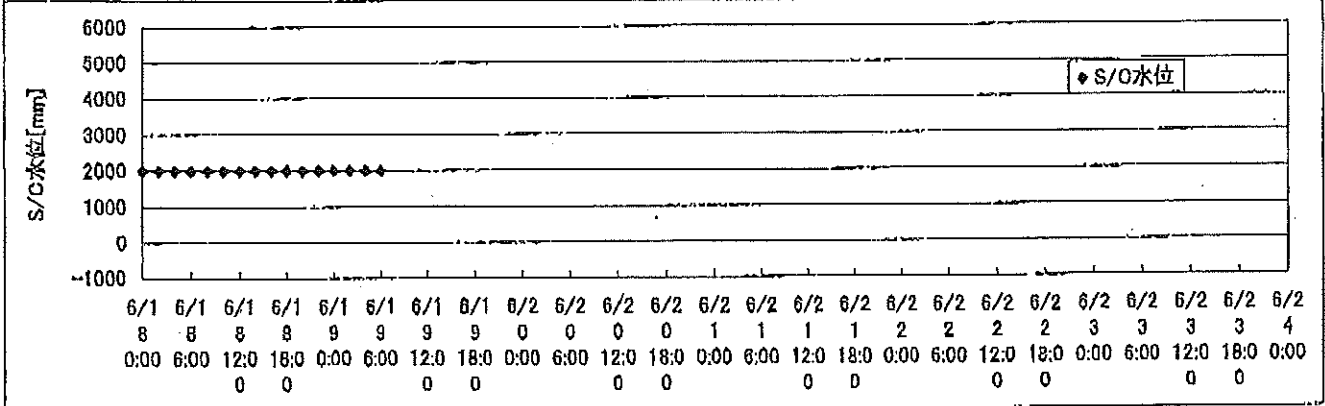
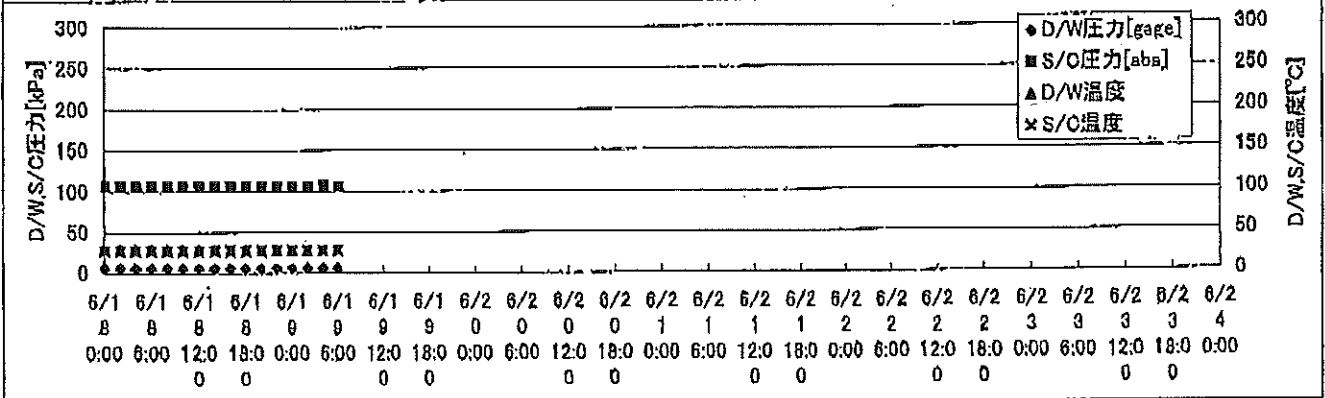
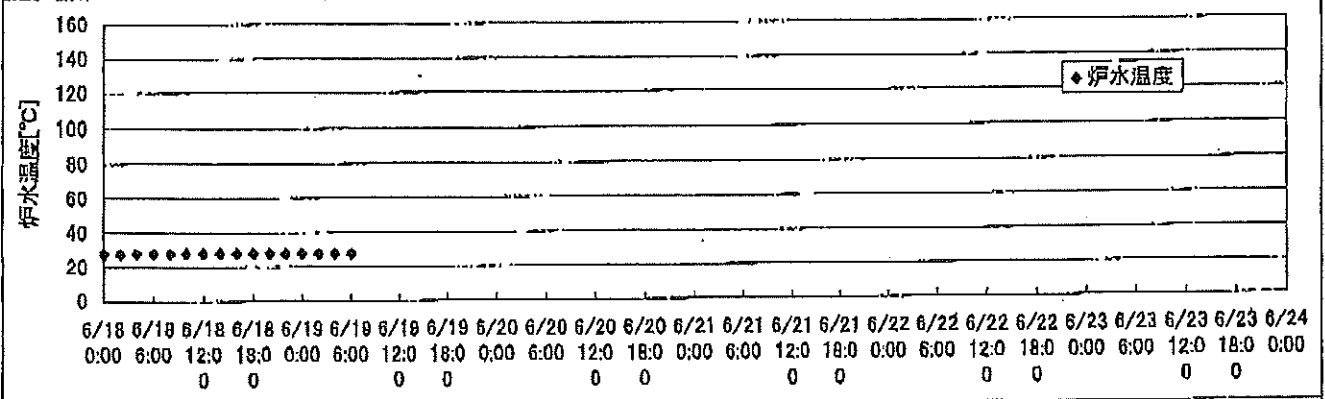
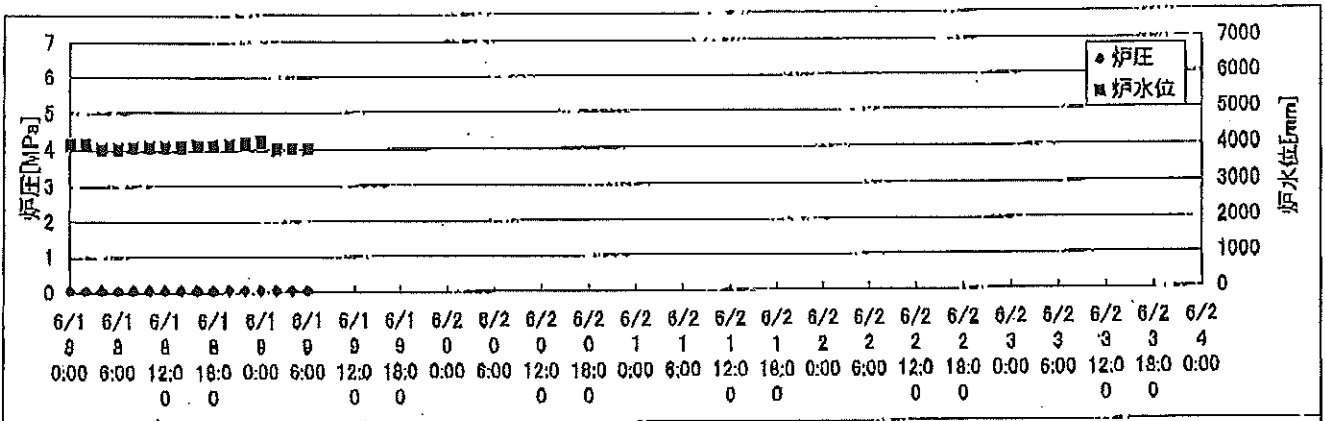
2F-2号機



2F-3号機



2F-4号機



2F-1号機

※燃料頂部(TAF)からの水位=炉水位+4200[mm]

時間	炉圧 [MPa (gage)]	炉水位 [mm] 停止時	炉水温度[°C]	D/W圧力 [kPa(gage)]	D/W温度 [°C]	S/C圧力 [kPa(abs)]	S/C水位 [mm]	S/C温度 [°C]
2011/6/18 0:00	0.05	5750	23.5	6	25.9	107	1955	23
2011/6/18 2:00	0.05	5750	23.6	6	25.9	107	1955	23
2011/6/18 4:00	0.05	5750	23.6	6	25.9	107	1955	23
2011/6/18 6:00	0.05	5750	23.6	6	25.9	107	1955	23
2011/6/18 8:00	0.05	5750	23.6	6	25.9	107	1955	23
2011/6/18 10:00	0.05	5750	23.6	6	26.0	107	1955	23
2011/6/18 12:00	0.05	5750	23.6	6	26.0	107	1955	23
2011/6/18 14:00	0.05	5750	23.7	6	26.0	107	1955	23
2011/6/18 16:00	0.05	5750	23.7	6	26.0	107	1956	23
2011/6/18 18:00	0.05	5750	23.7	6	26.0	107	1956	23
2011/6/18 20:00	0.05	5750	23.7	6	26.0	107	1956	23
2011/6/18 22:00	0.05	5750	23.7	6	26.0	107	1955	24
2011/6/19 0:00	0.05	5750	23.7	6	26.0	107	1955	24
2011/6/19 2:00	0.05	5750	23.7	6	26.0	107	1955	24
2011/6/19 4:00	0.05	5750	23.7	6	26.0	107	1955	24
2011/6/19 6:00	0.05	5750	23.7	6	26.0	107	1952	24
2011/6/19 8:00								
2011/6/19 10:00								
2011/6/19 12:00								
2011/6/19 14:00								
2011/6/19 16:00								
2011/6/19 18:00								
2011/6/19 20:00								
2011/6/19 22:00								
2011/6/20 0:00								
2011/6/20 2:00								
2011/6/20 4:00								
2011/6/20 6:00								
2011/6/20 8:00								
2011/6/20 10:00								
2011/6/20 12:00								
2011/6/20 14:00								
2011/6/20 16:00								
2011/6/20 18:00								
2011/6/20 20:00								
2011/6/20 22:00								
2011/6/21 0:00								

2F-2号機

※燃料頂部(TAF)からの水位=炉水位+4200[mm]

時間	炉圧 [MPa (gage)]	炉水位 [mm] 停止時	炉水温度[°C]	D/W圧力 [kPa(gage)]	D/W温度 [°C]	S/C圧力 [kPa(abs)]	S/C水位 [mm]	S/C温度 [°C]
2011/6/18 0:00	0.03	5600	24.5	6	26.3	107	1200	24
2011/6/18 2:00	0.03	5600	24.5	6	26.4	107	1200	24
2011/6/18 4:00	0.03	5600	24.6	6	26.4	107	1200	24
2011/6/18 6:00	0.02	5600	24.5	6	26.3	107	1200	24
2011/6/18 8:00	0.02	5600	24.5	6	26.3	107	1200	24
2011/6/18 10:00	0.02	5600	24.5	6	26.3	107	1200	24
2011/6/18 12:00	0.02	5600	24.6	6	26.3	107	1200	24
2011/6/18 14:00	0.02	5600	24.6	6	26.3	107	1200	24
2011/6/18 16:00	0.02	5600	24.6	6	26.4	107	1200	24
2011/6/18 18:00	0.02	5600	24.6	6	26.3	107	1200	24
2011/6/18 20:00	0.02	5600	24.6	6	26.2	107	1200	24
2011/6/18 22:00	0.02	5600	24.6	6	26.2	107	1200	24
2011/6/19 0:00	0.02	5600	24.5	6	26.2	107	1200	24
2011/6/19 2:00	0.02	5600	24.6	6	26.3	107	1200	24
2011/6/19 4:00	0.02	5600	24.6	6	26.3	107	1200	24
2011/6/19 6:00	0.02	5600	24.5	6	26.2	107	1200	24
2011/6/19 8:00								
2011/6/19 10:00								
2011/6/19 12:00								
2011/6/19 14:00								
2011/6/19 16:00								
2011/6/19 18:00								
2011/6/19 20:00								
2011/6/19 22:00								
2011/6/20 0:00								
2011/6/20 2:00								
2011/6/20 4:00								
2011/6/20 6:00								
2011/6/20 8:00								
2011/6/20 10:00								
2011/6/20 12:00								
2011/6/20 14:00								
2011/6/20 16:00								
2011/6/20 18:00								
2011/6/20 20:00								
2011/6/20 22:00								
2011/6/21 0:00								

2F-3号機

※燃料頂部(TAF)からの水位=炉水位+4200[mm]

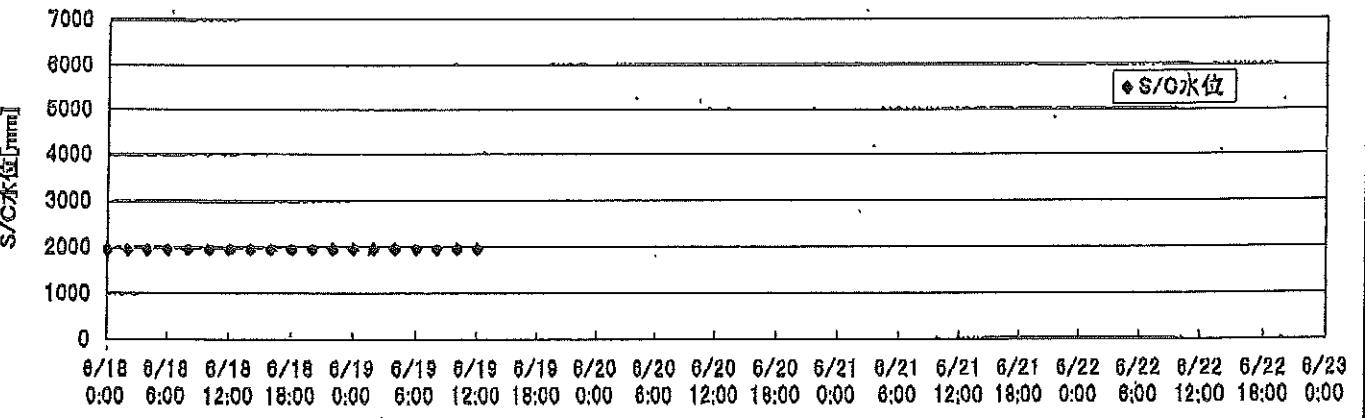
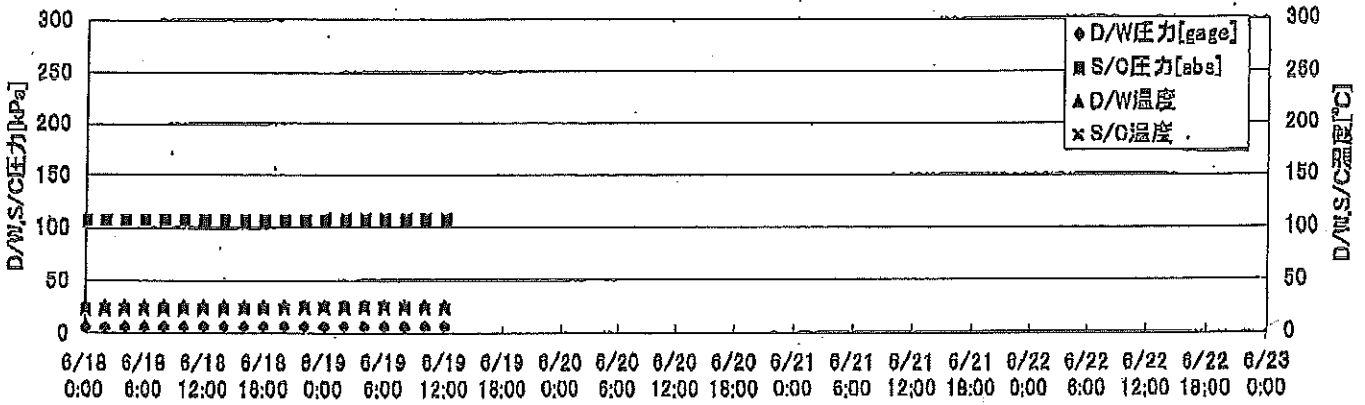
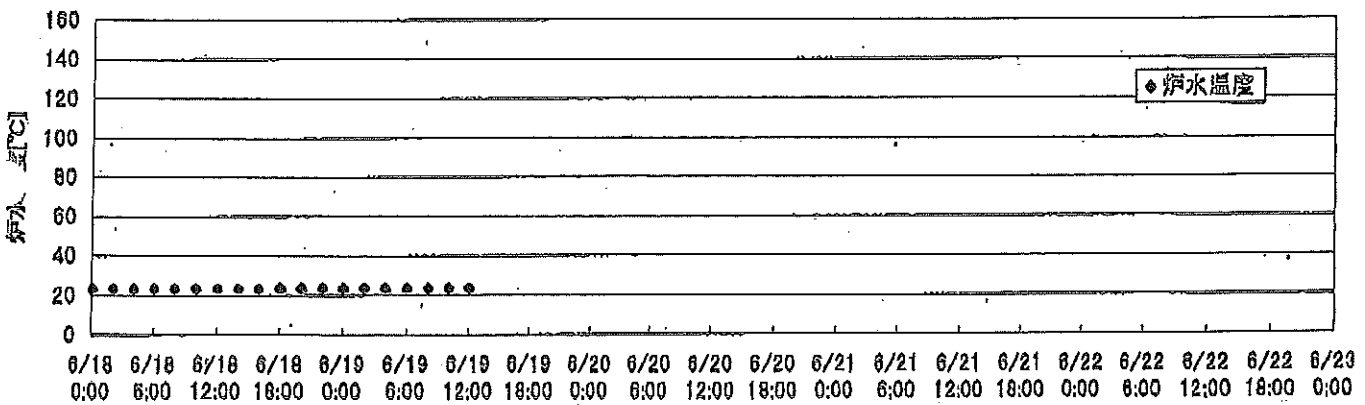
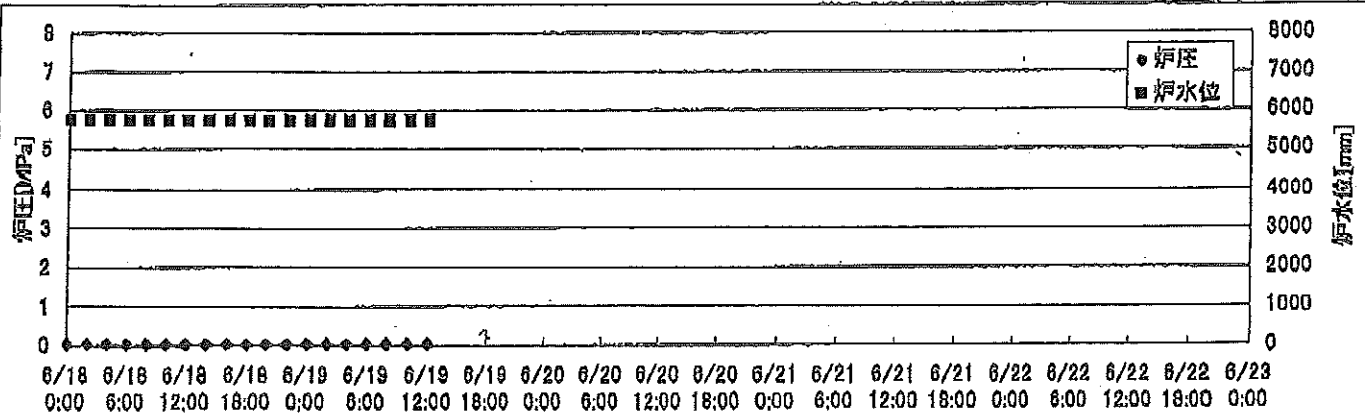
時間	炉圧 [MPa (gage)]	炉水位 [mm] 停止時	炉水温度[°C]	D/W圧力 [kPa(gage)]	D/W温度 [°C]	S/C圧力 [kPa(abs)]	S/C水位 [mm]	S/C温度 [°C]
2011/6/18 0:00	0.02	3900	28.4	9	29.7	110	2100	27
2011/6/18 2:00	0.02	3950	28.5	9	29.7	110	2100	27
2011/6/18 4:00	0.02	3950	28.6	10	29.6	110	2100	27
2011/6/18 6:00	0.02	3950	28.5	10	29.6	110	2100	27
2011/6/18 8:00	0.02	3950	28.5	10	29.6	110	2100	27
2011/6/18 10:00	0.02	3950	28.5	10	29.6	110	2100	27
2011/6/18 12:00	0.02	4000	28.6	10	29.6	111	2100	27
2011/6/18 14:00	0.02	4000	28.7	10	29.6	110	2100	27
2011/6/18 16:00	0.02	4000	28.7	10	29.6	110	2100	27
2011/6/18 18:00	0.02	4000	28.6	10	29.6	110	2100	27
2011/6/18 20:00	0.02	4000	28.5	10	29.6	110	2100	27
2011/6/18 22:00	0.02	4000	28.5	10	29.8	110	2100	27
2011/6/19 0:00	0.02	4000	28.5	10	29.6	110	2100	27
2011/6/19 2:00	0.03	4000	28.4	10	29.6	110	2100	27
2011/6/19 4:00	0.02	4000	28.4	10	29.6	110	2100	27
2011/6/19 6:00	0.02	4000	28.3	10	29.6	110	2100	27
2011/6/19 8:00								
2011/6/19 10:00								
2011/6/19 12:00								
2011/6/19 14:00								
2011/6/19 16:00								
2011/6/19 18:00								
2011/6/19 20:00								
2011/6/19 22:00								
2011/6/20 0:00								
2011/6/20 2:00								
2011/6/20 4:00								
2011/6/20 6:00								
2011/6/20 8:00								
2011/6/20 10:00								
2011/6/20 12:00								
2011/6/20 14:00								
2011/6/20 16:00								
2011/6/20 18:00								
2011/6/20 20:00								
2011/6/20 22:00								
2011/6/21 0:00								

2F-4号機

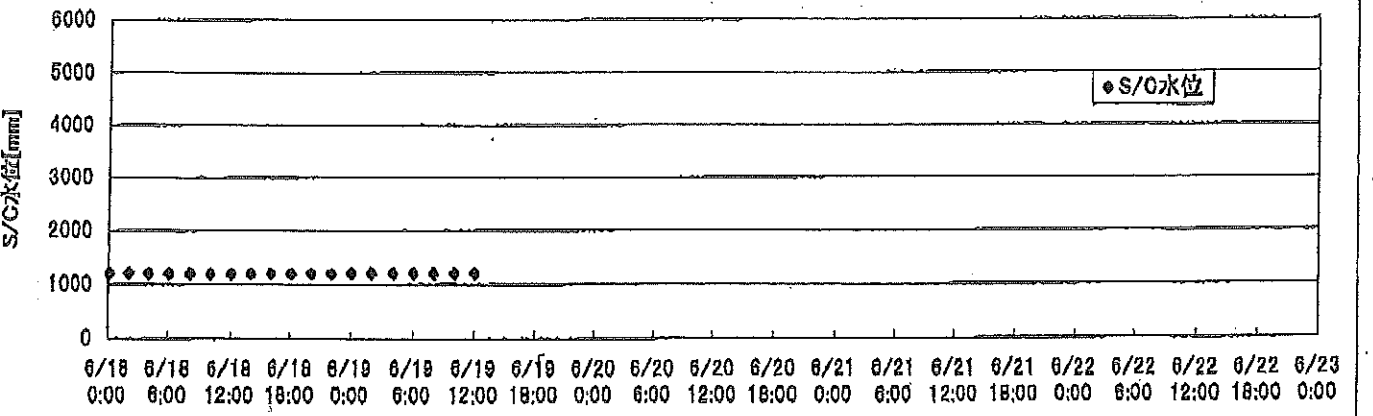
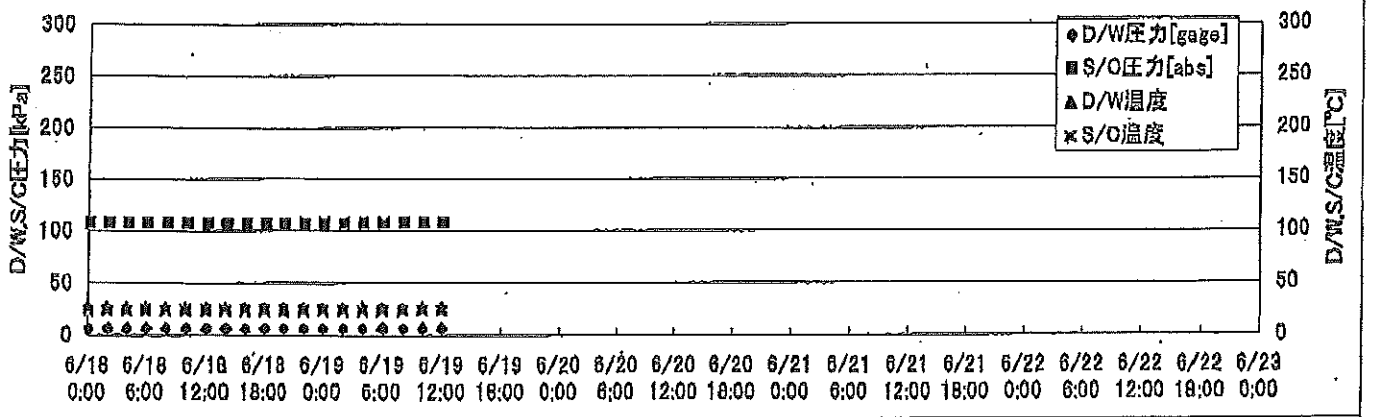
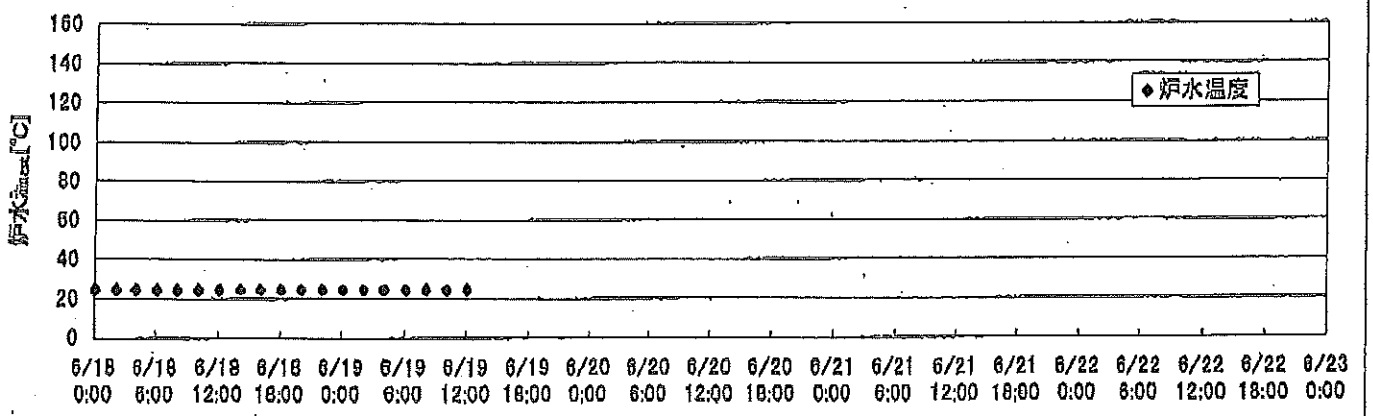
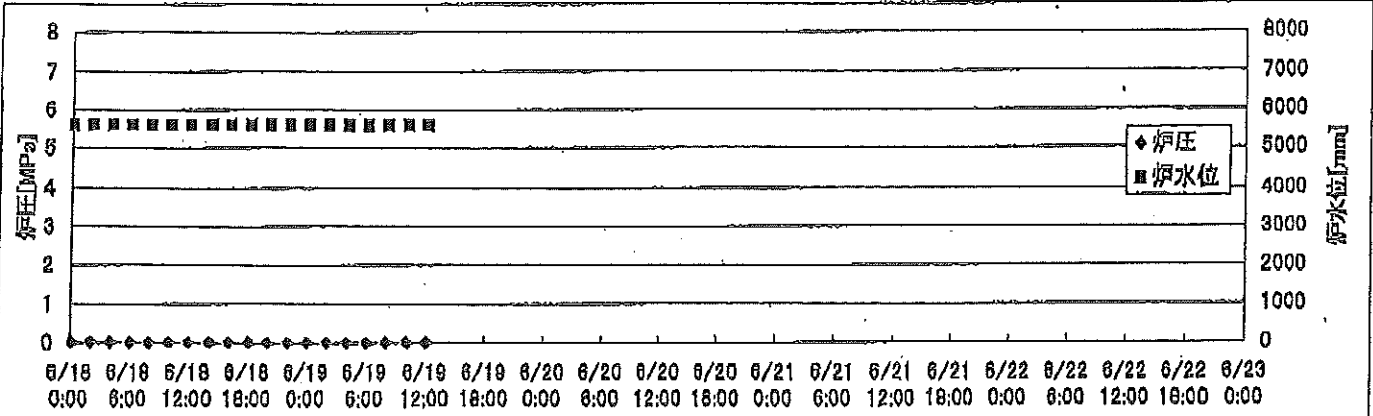
※燃料頂部(TAF)からの水位=炉水位+4200[mm]

時間	炉圧 [MPa (gage)]	炉水位 [mm] 停止時	炉水温度[°C]	D/W圧力 [kPa(gage)]	D/W温度 [°C]	S/C圧力 [kPa(abs)]	S/C水位 [mm]	S/C温度 [°C]
2011/6/18 0:00	0.07	4150	27.8	6	29.1	106	2000	28
2011/6/18 2:00	0.07	4150	27.8	6	29.0	106	2000	28
2011/6/18 4:00	0.07	4000	28.0	6	29.3	106	2000	28
2011/6/18 6:00	0.07	4000	28.1	6	29.1	106	2000	28
2011/6/18 8:00	0.07	4050	28.0	6	29.1	108	2000	28
2011/6/18 10:00	0.07	4050	28.0	6	29.1	106	2000	28
2011/6/18 12:00	0.07	4050	28.0	6	29.1	107	2000	28
2011/6/18 14:00	0.07	4050	28.1	6	29.2	106	2000	28
2011/6/18 16:00	0.07	4100	28.1	6	29.1	107	2000	28
2011/6/18 18:00	0.07	4100	28.1	6	29.1	106	2000	28
2011/6/18 20:00	0.07	4100	28.0	6	29.1	106	2000	28
2011/6/18 22:00	0.07	4150	27.9	6	29.1	106	2000	28
2011/6/19 0:00	0.07	4200	27.8	6	29.2	106	2000	28
2011/6/19 2:00	0.07	4000	27.8	6	29.2	106	2000	28
2011/6/19 4:00	0.07	4000	27.8	6	29.2	107	2000	28
2011/6/19 6:00	0.07	4000	27.8	6	29.2	106	2000	28
2011/6/19 8:00								
2011/6/19 10:00								
2011/6/19 12:00								
2011/6/19 14:00								
2011/6/19 16:00								
2011/6/19 18:00								
2011/6/19 20:00								
2011/6/19 22:00								
2011/6/20 0:00								
2011/6/20 2:00								
2011/6/20 4:00								
2011/6/20 6:00								
2011/6/20 8:00								
2011/6/20 10:00								
2011/6/20 12:00								
2011/6/20 14:00								
2011/6/20 16:00								
2011/6/20 18:00								
2011/6/20 20:00								
2011/6/20 22:00								
2011/6/21 0:00								

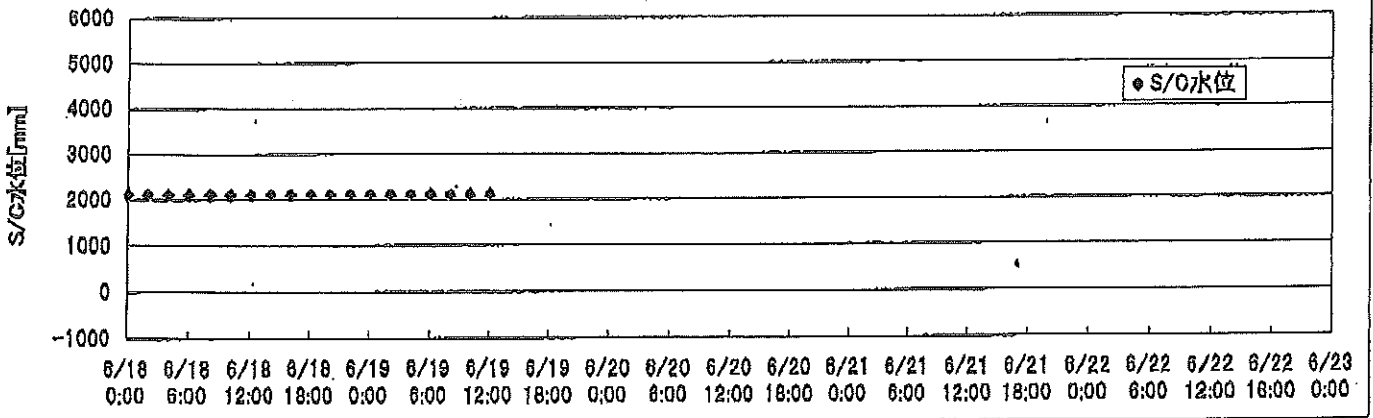
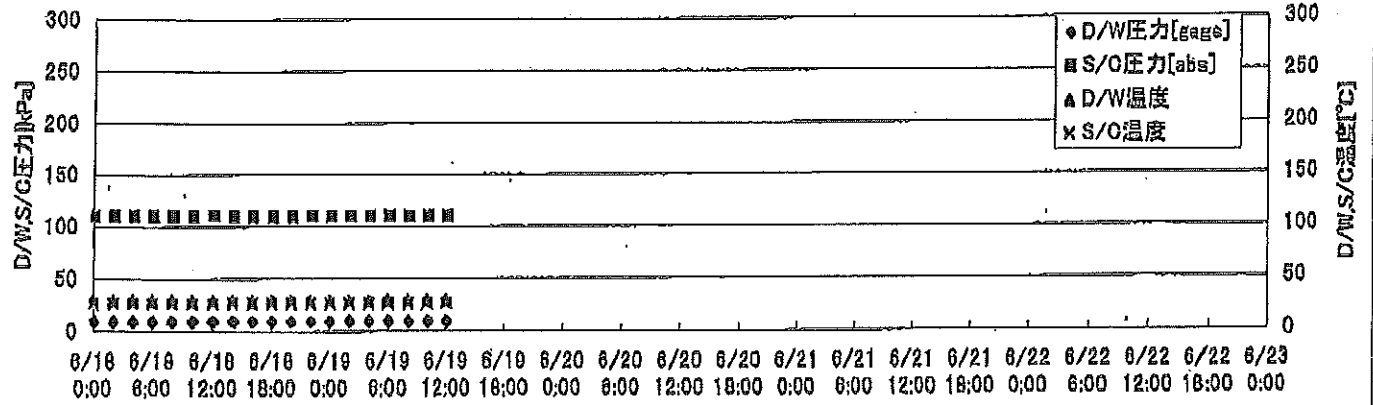
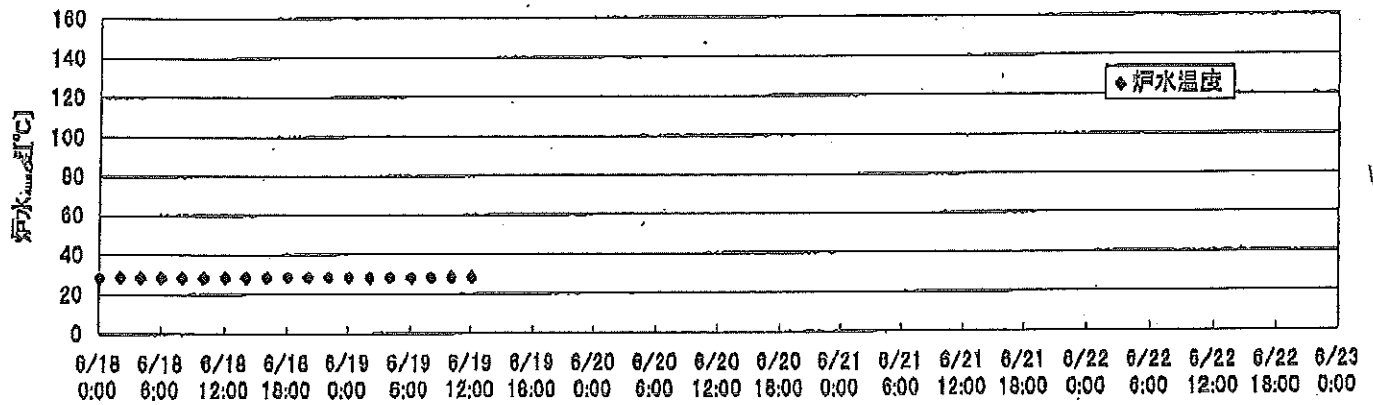
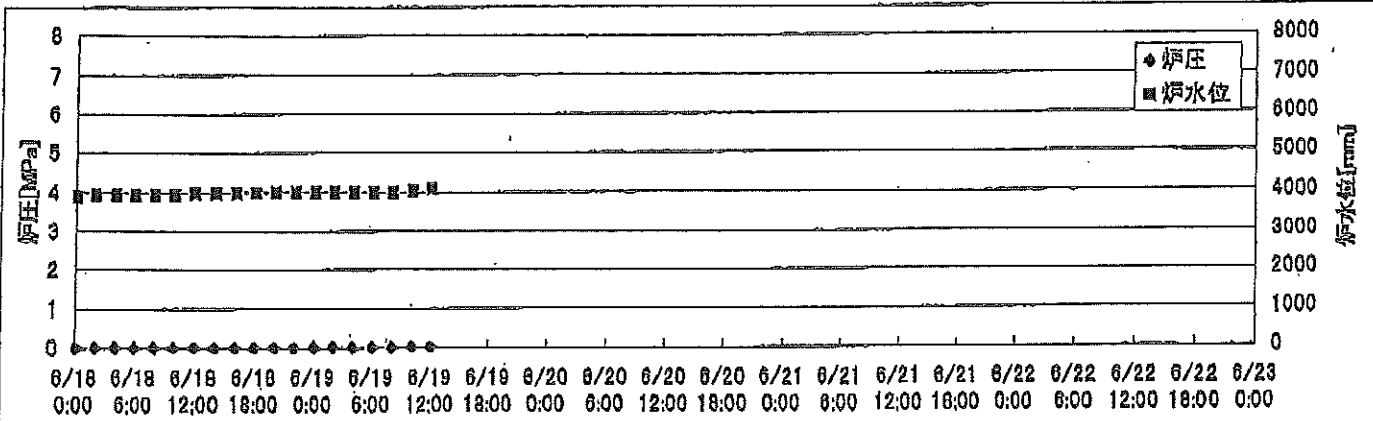
2F-1号機



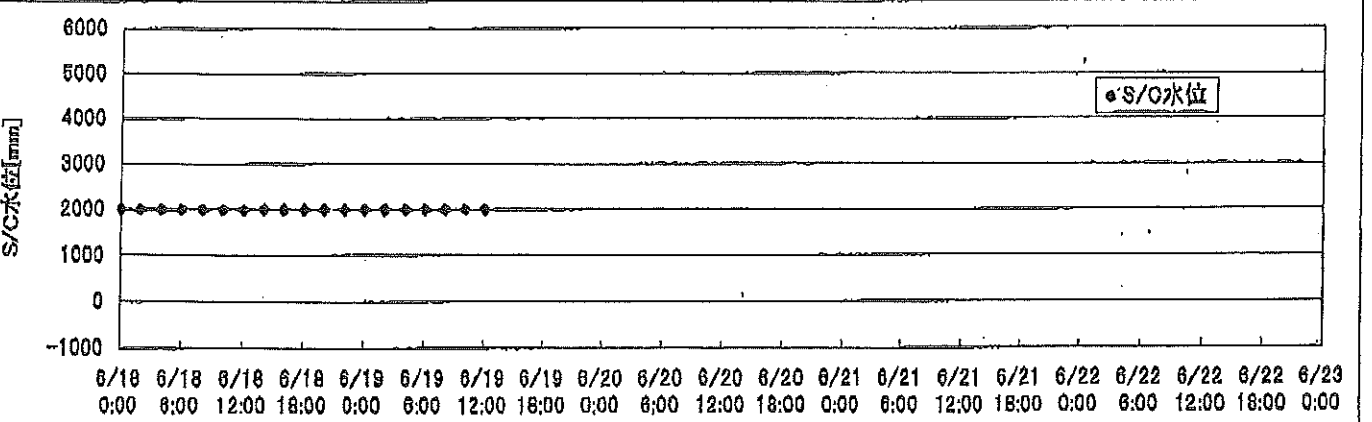
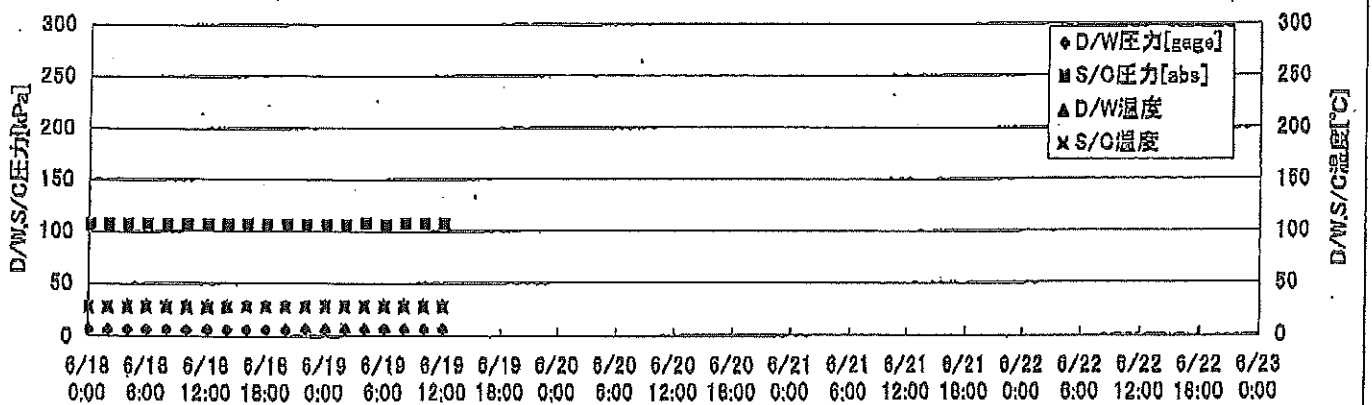
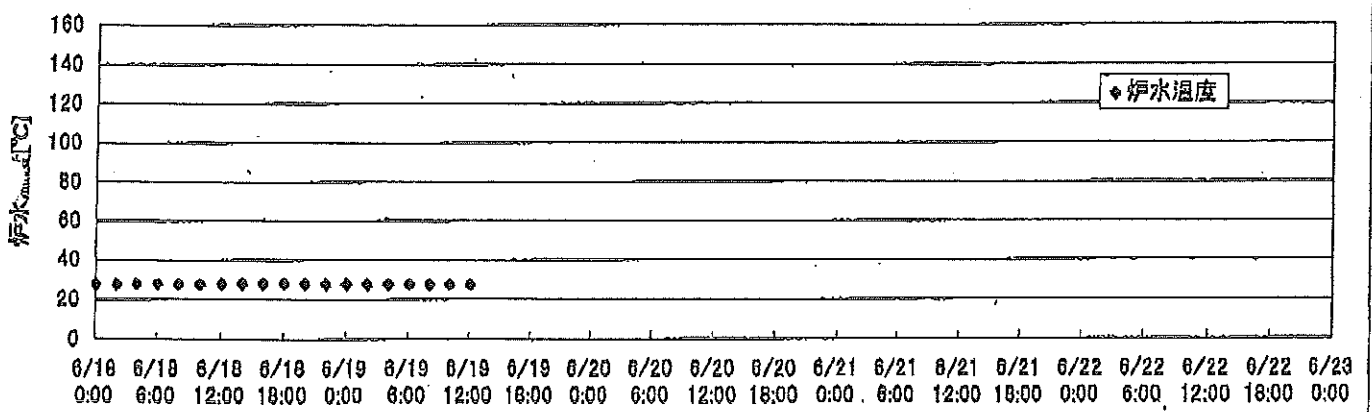
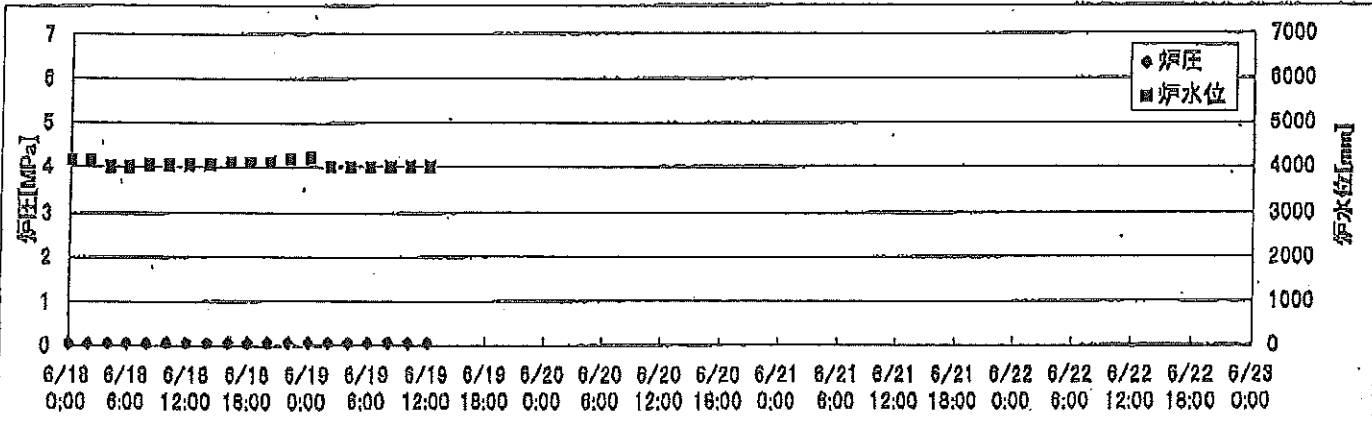
2F-2号機



2F-3号機



2F-4号機



2F-1号機

※燃料頂部(TAF)からの水位=炉水位+4200[mm]

時間	炉圧 [MPa (gage)]	炉水位 [mm] 停止時	炉水温度[°C]	D/W圧力 [kPa(gage)]	D/W温度 [°C]	S/C圧力 [kPa(abs)]	S/G水位 [mm]	S/C温度 [°C]
2011/6/18 0:00	0.05	5750	23.5	6	25.9	107	1955	23
2011/6/18 2:00	0.05	5750	23.6	6	25.9	107	1955	23
2011/6/18 4:00	0.05	5750	23.6	6	25.9	107	1955	23
2011/6/18 6:00	0.05	5750	23.6	6	25.9	107	1955	23
2011/6/18 8:00	0.05	5750	23.6	6	25.9	107	1955	23
2011/6/18 10:00	0.05	5750	23.6	6	26.0	107	1955	23
2011/6/18 12:00	0.05	5750	23.6	6	26.0	107	1955	23
2011/6/18 14:00	0.05	5750	23.7	6	26.0	107	1955	23
2011/6/18 16:00	0.05	5750	23.7	6	26.0	107	1956	23
2011/6/18 18:00	0.05	5750	23.7	6	26.0	107	1956	23
2011/6/18 20:00	0.05	5750	23.7	6	26.0	107	1955	23
2011/6/18 22:00	0.05	5750	23.7	6	26.0	107	1955	24
2011/6/19 0:00	0.05	5750	23.7	6	26.0	107	1955	24
2011/6/19 2:00	0.05	5750	23.7	6	26.0	107	1955	24
2011/6/19 4:00	0.05	5750	23.7	6	26.0	107	1955	24
2011/6/19 6:00	0.05	5750	23.7	6	26.0	107	1952	24
2011/6/19 8:00	0.05	5750	23.7	6	25.9	107	1954	24
2011/6/19 10:00	0.05	5750	23.7	6	26.0	107	1955	23
2011/6/19 12:00	0.05	5750	23.7	6	26.0	107	1955	23
2011/6/19 14:00								
2011/6/19 16:00								
2011/6/19 18:00								
2011/6/19 20:00								
2011/6/19 22:00								
2011/6/20 0:00								
2011/6/20 2:00								
2011/6/20 4:00								
2011/6/20 6:00								
2011/6/20 8:00								
2011/6/20 10:00								
2011/6/20 12:00								
2011/6/20 14:00								
2011/6/20 16:00								
2011/6/20 18:00								
2011/6/20 20:00								
2011/6/20 22:00								
2011/6/21 0:00								

2F-2号機

※燃料頂部(TAF)からの水位=炉水位+4200[mm]

時間	炉圧 [MPa (gage)]	炉水位 [mm] 停止時	炉水温度[°C]	D/W圧力 [kPa(gage)]	D/W温度 [°C]	S/C圧力 [kPa(abs)]	S/C水位 [mm]	S/C温度 [°C]
2011/6/18 0:00	0.03	5600	24.5	6	26.3	107	1200	24
2011/6/18 2:00	0.03	5600	24.5	6	26.4	107	1200	24
2011/6/18 4:00	0.03	5600	24.6	6	26.4	107	1200	24
2011/6/18 6:00	0.02	5600	24.5	6	26.3	107	1200	24
2011/6/18 8:00	0.02	5600	24.5	6	26.3	107	1200	24
2011/6/18 10:00	0.02	5600	24.5	6	26.3	107	1200	24
2011/6/18 12:00	0.02	5600	24.6	6	26.3	107	1200	24
2011/6/18 14:00	0.02	5600	24.6	6	26.3	107	1200	24
2011/6/18 16:00	0.02	5600	24.6	6	26.4	107	1200	24
2011/6/18 18:00	0.02	5600	24.6	6	26.3	107	1200	24
2011/6/18 20:00	0.02	5600	24.6	6	26.2	107	1200	24
2011/6/18 22:00	0.02	5600	24.6	6	26.2	107	1200	24
2011/6/19 0:00	0.02	5600	24.5	6	26.2	107	1200	24
2011/6/19 2:00	0.02	5600	24.6	6	26.3	107	1200	24
2011/6/19 4:00	0.02	5600	24.6	6	26.3	107	1200	24
2011/6/19 6:00	0.02	5600	24.5	6	26.2	107	1200	24
2011/6/19 8:00	0.02	5600	24.5	6	26.2	107	1200	24
2011/6/19 10:00	0.02	5600	24.4	6	26.3	107	1200	24
2011/6/19 12:00	0.02	5600	24.5	6	26.3	107	1200	24
2011/6/19 14:00								
2011/6/19 16:00								
2011/6/19 18:00								
2011/6/19 20:00								
2011/6/19 22:00								
2011/6/20 0:00								
2011/6/20 2:00								
2011/6/20 4:00								
2011/6/20 6:00								
2011/6/20 8:00								
2011/6/20 10:00								
2011/6/20 12:00								
2011/6/20 14:00								
2011/6/20 16:00								
2011/6/20 18:00								
2011/6/20 20:00								
2011/6/20 22:00								
2011/6/21 0:00								

2F-3号機

※燃料頂部(TAF)からの水位=炉水位+4200[mm]

時間	炉圧 [MPa (gage)]	炉水位 [mm] 停止時	炉水温度[°C]	D/W圧力 [kPa(gage)]	D/W温度 [°C]	S/C圧力 [kPa(abs)]	S/C水位 [mm]	S/C温度 [°C]
2011/6/18 0:00	0.02	3900	28.4	9	29.7	110	2100	27
2011/6/18 2:00	0.02	3950	28.5	9	29.7	110	2100	27
2011/6/18 4:00	0.02	3950	28.6	10	29.6	110	2100	27
2011/6/18 6:00	0.02	3950	28.5	10	29.6	110	2100	27
2011/6/18 8:00	0.02	3950	28.5	10	29.6	110	2100	27
2011/6/18 10:00	0.02	3950	28.5	10	29.6	110	2100	27
2011/6/18 12:00	0.02	4000	28.6	10	29.6	111	2100	27
2011/6/18 14:00	0.02	4000	28.7	10	29.6	110	2100	27
2011/6/18 16:00	0.02	4000	28.7	10	29.6	110	2100	27
2011/6/18 18:00	0.02	4000	28.6	10	29.6	110	2100	27
2011/6/18 20:00	0.02	4000	28.5	10	29.6	110	2100	27
2011/6/18 22:00	0.02	4000	28.5	10	29.6	110	2100	27
2011/6/19 0:00	0.02	4000	28.5	10	29.6	110	2100	27
2011/6/19 2:00	0.03	4000	28.4	10	29.6	110	2100	27
2011/6/19 4:00	0.02	4000	28.4	10	29.6	110	2100	27
2011/6/19 6:00	0.02	4000	28.3	10	29.6	110	2100	27
2011/6/19 8:00	0.02	4000	28.3	10	29.6	110	2100	27
2011/6/19 10:00	0.03	4050	28.3	10	29.6	110	2100	27
2011/6/19 12:00	0.03	4100	28.4	10	29.6	110	2100	27
2011/6/19 14:00								
2011/6/19 16:00								
2011/6/19 18:00								
2011/6/19 20:00								
2011/6/19 22:00								
2011/6/20 0:00								
2011/6/20 2:00								
2011/6/20 4:00								
2011/6/20 6:00								
2011/6/20 8:00								
2011/6/20 10:00								
2011/6/20 12:00								
2011/6/20 14:00								
2011/6/20 16:00								
2011/6/20 18:00								
2011/6/20 20:00								
2011/6/20 22:00								
2011/6/21 0:00								

2F-4号機

※燃料頂部(TAF)からの水位=炉水位+4200[mm]

時間	炉圧 [MPa (gage)]	炉水位 [mm] 停止時	炉水温度[°C]	D/W圧力 [kPa(gage)]	D/W温度 [°C]	S/C圧力 [kPa(abs)]	S/C水位 [mm]	S/C温度 [°C]
2011/6/18 0:00	0.07	4150	27.8	6	29.1	106	2000	28
2011/6/18 2:00	0.07	4150	27.8	6	29.0	106	2000	28
2011/6/18 4:00	0.07	4000	28.0	6	29.3	106	2000	28
2011/6/18 6:00	0.07	4000	28.1	6	29.1	106	2000	28
2011/6/18 8:00	0.07	4050	28.0	6	29.1	106	2000	28
2011/6/18 10:00	0.07	4050	28.0	6	29.1	106	2000	28
2011/6/18 12:00	0.07	4050	28.0	6	29.1	107	2000	28
2011/6/18 14:00	0.07	4050	28.1	6	29.2	106	2000	28
2011/6/18 16:00	0.07	4100	28.1	6	29.1	107	2000	28
2011/6/18 18:00	0.07	4100	28.1	6	29.1	106	2000	28
2011/6/18 20:00	0.07	4100	28.0	6	29.1	106	2000	28
2011/6/18 22:00	0.07	4150	27.9	6	29.1	106	2000	28
2011/6/19 0:00	0.07	4200	27.8	6	29.2	106	2000	28
2011/6/19 2:00	0.07	4000	27.8	6	29.2	106	2000	28
2011/6/19 4:00	0.07	4000	27.8	6	29.2	107	2000	28
2011/6/19 6:00	0.07	4000	27.8	6	29.2	106	2000	28
2011/6/19 8:00	0.07	4000	27.7	6	29.1	107	2000	28
2011/6/19 10:00	0.07	4000	27.7	6	29.3	107	2000	28
2011/6/19 12:00	0.07	4000	27.7	6	29.2	107	2000	28
2011/6/19 14:00								
2011/6/19 16:00								
2011/6/19 18:00								
2011/6/19 20:00								
2011/6/19 22:00								
2011/6/20 0:00								
2011/6/20 2:00								
2011/6/20 4:00								
2011/6/20 6:00								
2011/6/20 8:00								
2011/6/20 10:00								
2011/6/20 12:00								
2011/6/20 14:00								
2011/6/20 16:00								
2011/6/20 18:00								
2011/6/20 20:00								
2011/6/20 22:00								
2011/6/21 0:00								