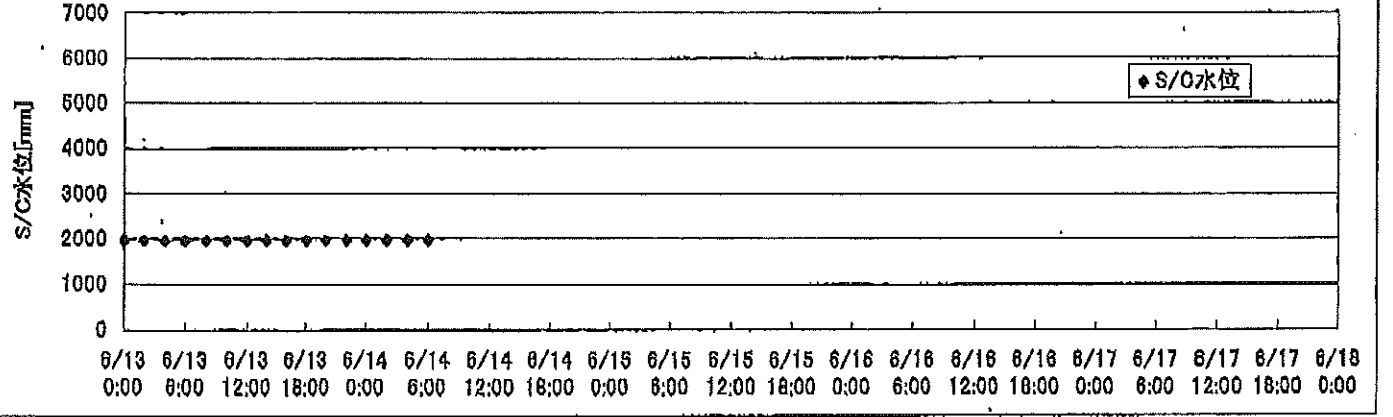
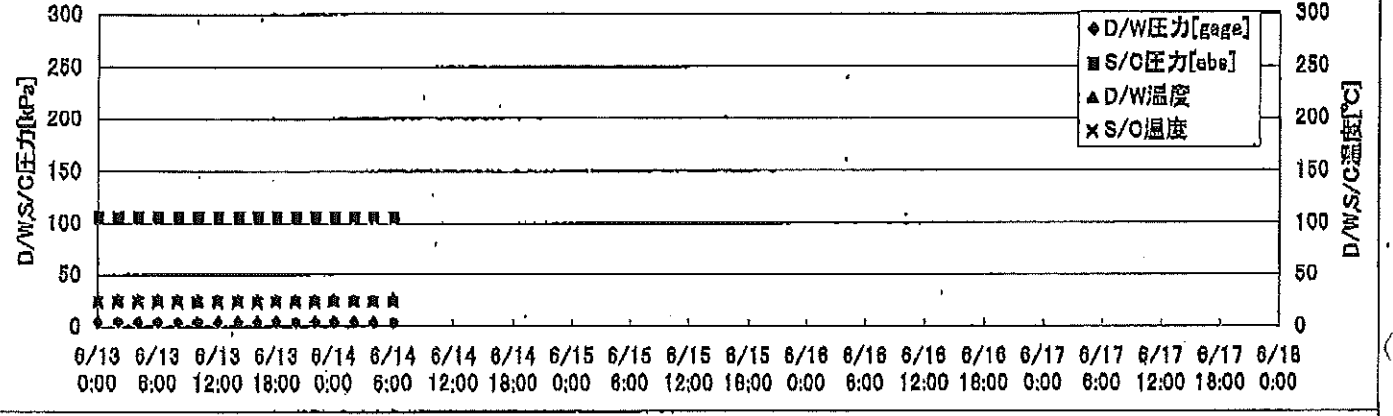
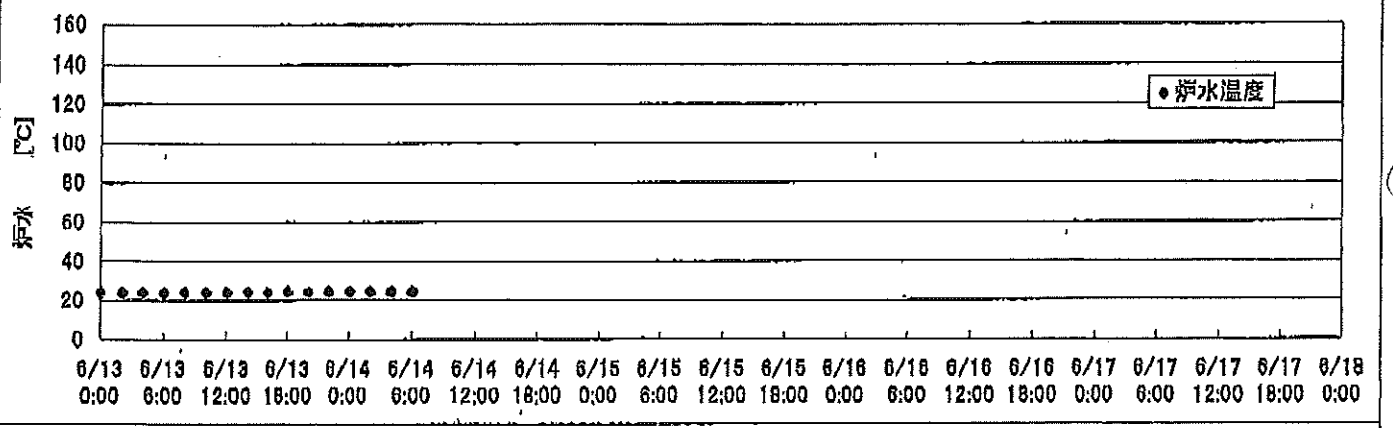
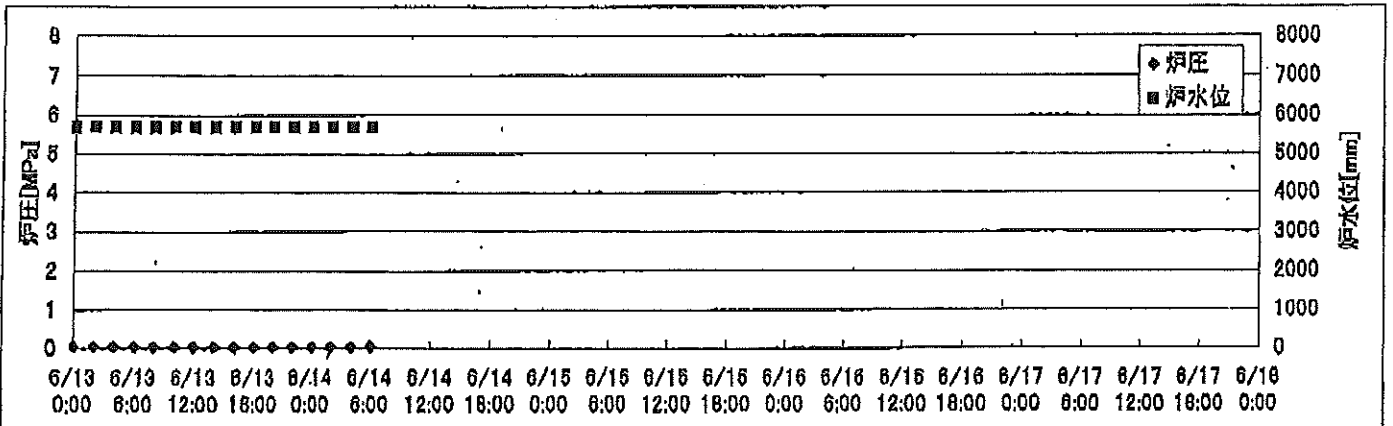
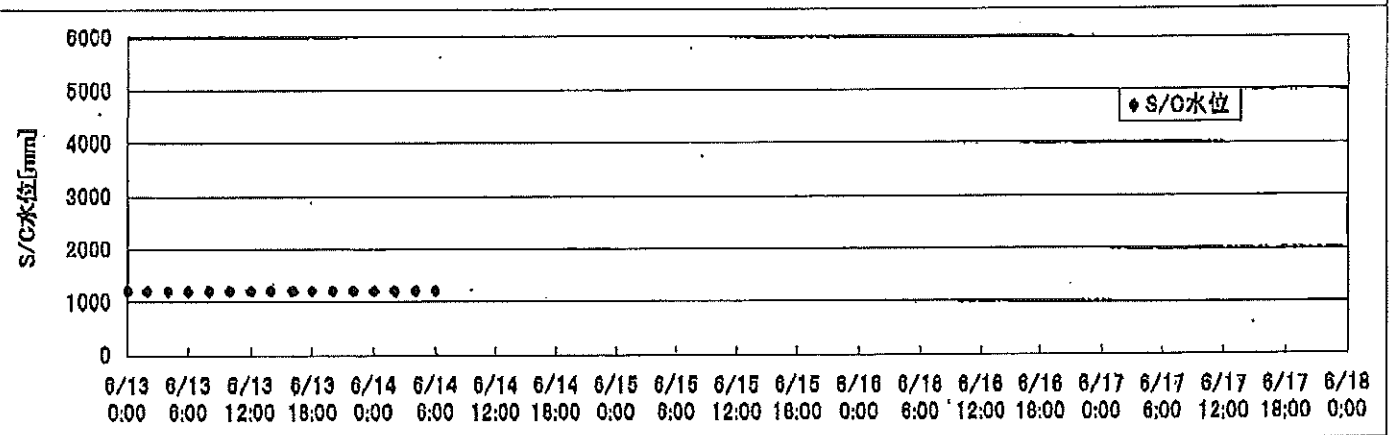
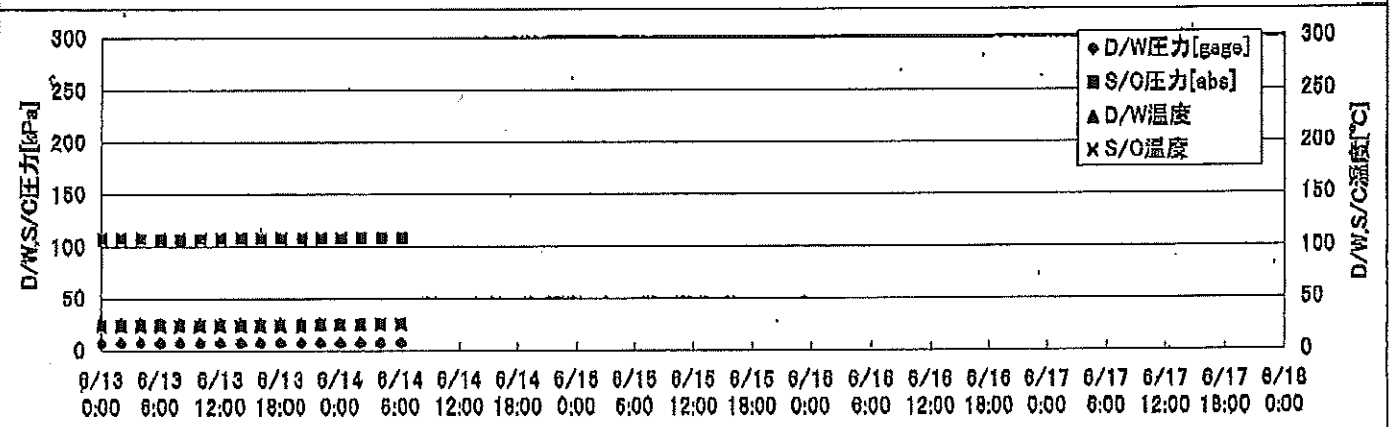
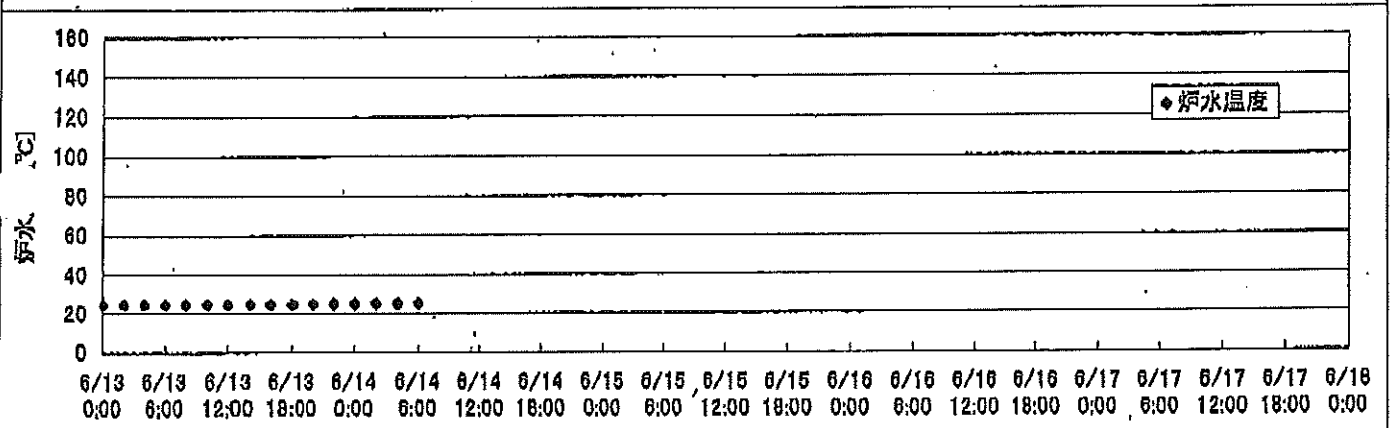
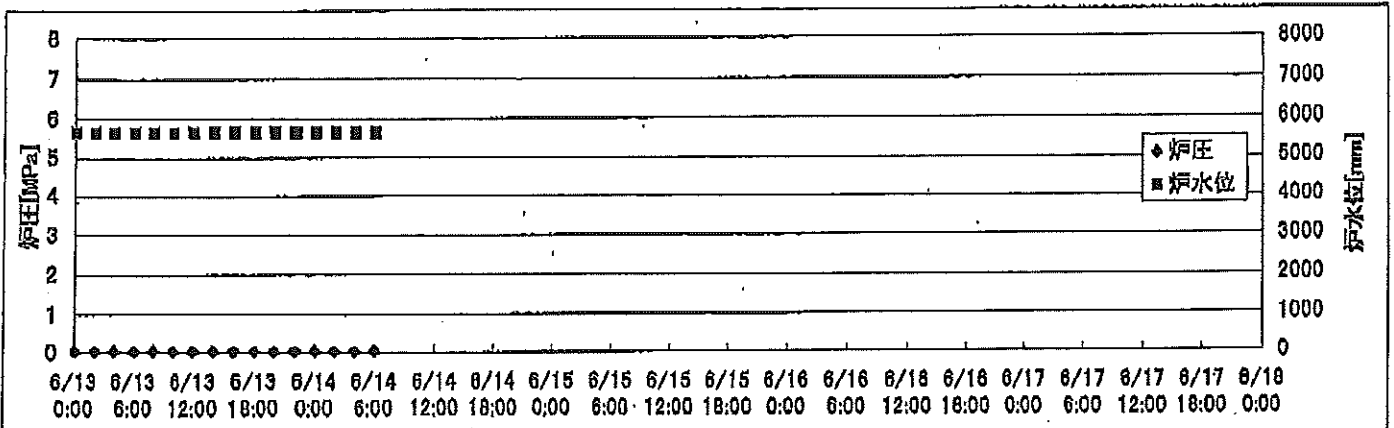


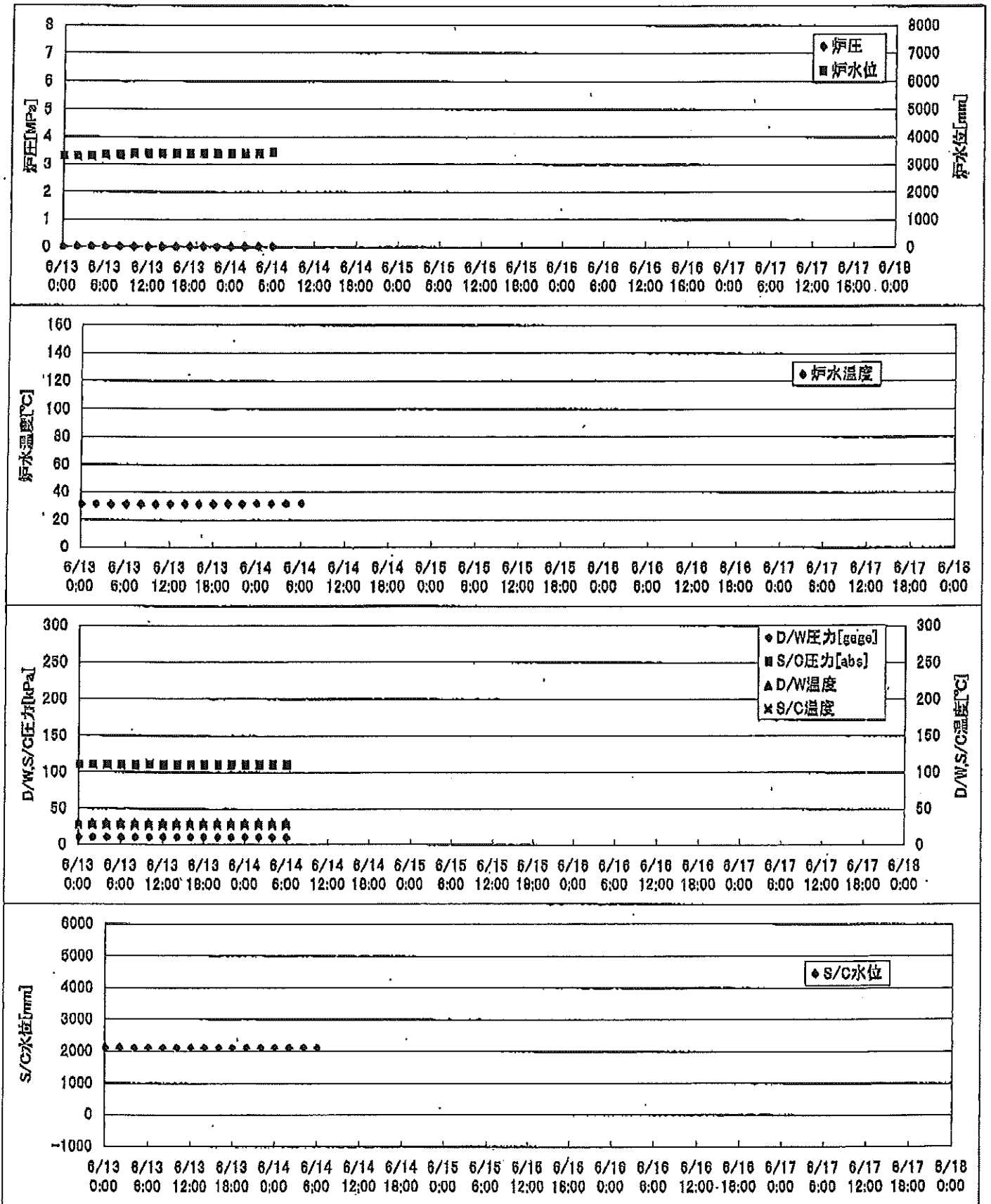
2F-1号機



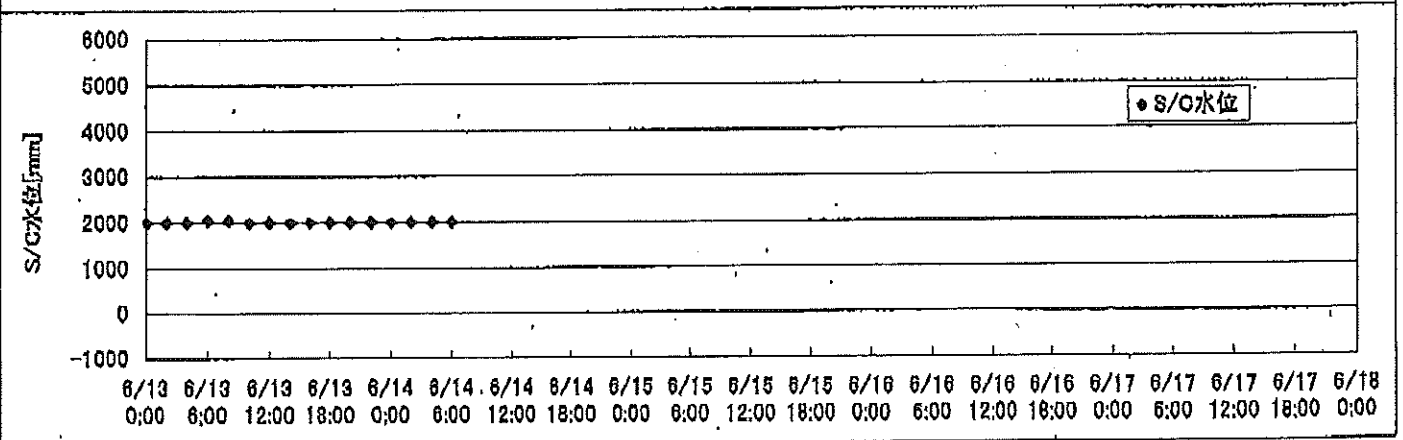
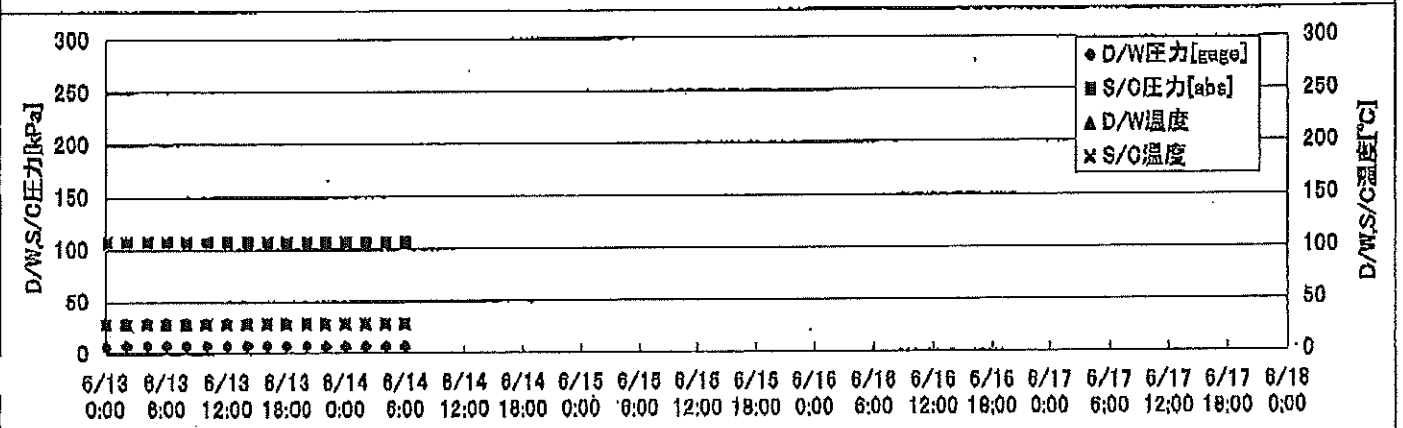
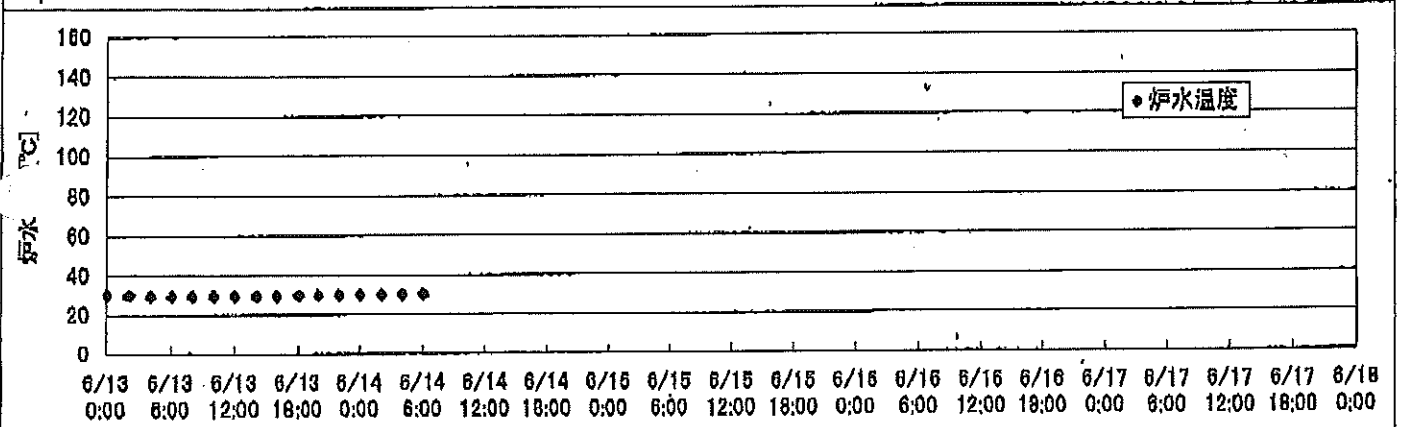
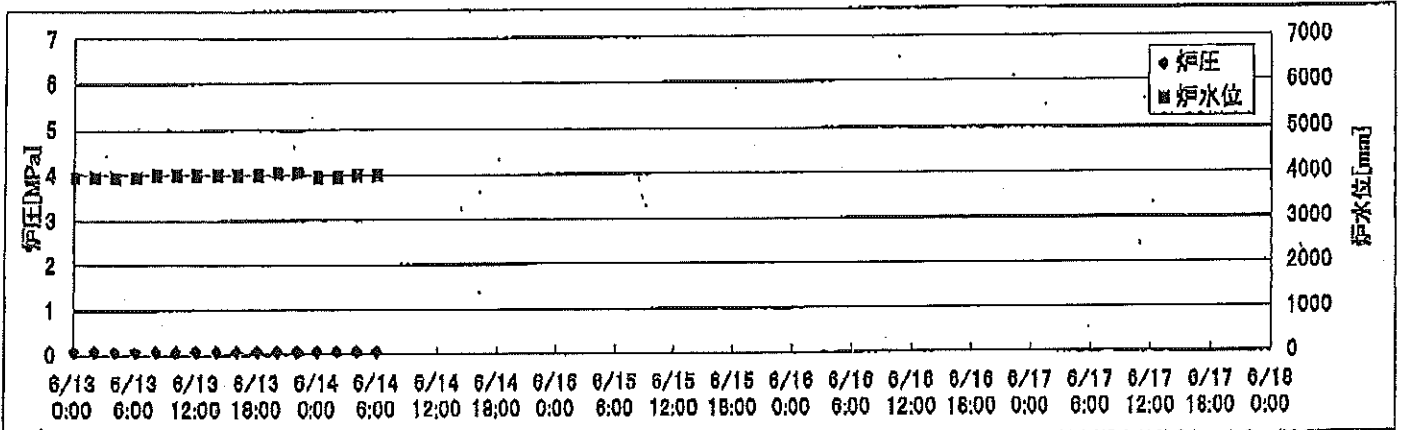
2F-2号機



2F-3号機



2F-4号機



## 2F-1号機

※燃料頂部(TAF)からの水位=炉水位+4200[mm]

時間	炉圧 [MPa (gage)]	炉水位 [mm] 停止時	炉水温度[°C]	D/W圧力 [kPa(gage)]	D/W温度 [°C]	S/C圧力 [kPa(abs)]	S/C水位 [mm]	S/C温度 [°C]
2011/6/13 0:00	0.05	5700	24.0	4	25.8	105	1960	24
2011/6/13 2:00	0.05	5700	24.0	4	25.9	105	1960	24
2011/6/13 4:00	0.05	5700	24.0	4	26.0	105	1959	24
2011/6/13 6:00	0.05	5700	24.0	4	26.0	105	1959	24
2011/6/13 8:00	0.05	5700	24.1	4	26.0	105	1960	24
2011/6/13 10:00	0.05	5700	24.1	4	25.8	105	1959	24
2011/6/13 12:00	0.05	5700	24.2	4	25.8	105	1959	24
2011/6/13 14:00	0.05	5700	24.2	4	25.7	105	1960	24
2011/6/13 16:00	0.05	5700	24.2	4	25.8	105	1960	24
2011/6/13 18:00	0.05	5700	24.3	4	25.8	105	1960	24
2011/6/13 20:00	0.05	5700	24.3	4	25.8	105	1960	24
2011/6/13 22:00	0.05	5700	24.4	4	25.9	105	1960	24
2011/6/14 0:00	0.05	5700	24.4	4	26.0	105	1961	24
2011/6/14 2:00	0.05	5700	24.3	4	25.9	105	1961	24
2011/6/14 4:00	0.05	5700	24.3	4	26.0	105	1961	24
<b>2011/6/14 6:00</b>	<b>0.05</b>	<b>5700</b>	<b>24.2</b>	<b>4</b>	<b>26.0</b>	<b>105</b>	<b>1961</b>	<b>24</b>
2011/6/14 8:00								
2011/6/14 10:00								
2011/6/14 12:00								
2011/6/14 14:00								
2011/6/14 16:00								
2011/6/14 18:00								
2011/6/14 20:00								
2011/6/14 22:00								
2011/6/15 0:00								
2011/6/15 2:00								
2011/6/15 4:00								
2011/6/15 6:00								
2011/6/15 8:00								
2011/6/15 10:00								
2011/6/15 12:00								
2011/6/15 14:00								
2011/6/15 16:00								
2011/6/15 18:00								
2011/6/15 20:00								
2011/6/15 22:00								
2011/6/16 0:00								

## 2F-2号機

※燃料頂部(TAF)からの水位=炉水位+4200[mm]

時間	炉圧 [MPa (gage)]	炉水位 [mm] 停止時	炉水温度[°C]	D/W圧力 [kPa(gage)]	D/W温度 [°C]	S/C圧力 [kPa(abs)]	S/C水位 [mm]	S/C温度 [°C]
2011/6/13 0:00	0.04	5650	24.4	7	26.0	107	1200	24
2011/6/13 2:00	0.04	5650	24.4	7	26.0	107	1200	24
2011/6/13 4:00	0.04	5650	24.5	7	26.0	107	1200	24
2011/6/13 6:00	0.03	5650	24.5	7	26.2	107	1200	24
2011/6/13 8:00	0.04	5650	24.6	7	26.2	107	1200	24
2011/6/13 10:00	0.04	5650	24.8	7	26.2	107	1200	24
2011/6/13 12:00	0.04	5650	24.6	7	26.2	107	1200	24
2011/6/13 14:00	0.04	5650	24.7	7	26.2	107	1200	24
2011/6/13 16:00	0.04	5650	24.7	7	26.2	107	1200	24
2011/6/13 18:00	0.03	5650	24.8	7	26.2	107	1200	24
2011/6/13 20:00	0.03	5650	24.9	7	26.2	107	1200	24
2011/6/13 22:00	0.04	5650	24.9	7	26.0	107	1200	25
2011/6/14 0:00	0.04	5650	25.0	7	26.0	107	1200	25
2011/6/14 2:00	0.04	5650	25.1	7	26.2	107	1200	25
2011/6/14 4:00	0.03	5650	25.1	7	26.0	107	1200	25
<b>2011/6/14 6:00</b>	<b>0.04</b>	<b>5650</b>	<b>25.1</b>	<b>7</b>	<b>26.0</b>	<b>107</b>	<b>1200</b>	<b>25</b>
2011/6/14 8:00								
2011/6/14 10:00								
2011/6/14 12:00								
2011/6/14 14:00								
2011/6/14 16:00								
2011/6/14 18:00								
2011/6/14 20:00								
2011/6/14 22:00								
2011/6/15 0:00								
2011/6/15 2:00								
2011/6/15 4:00								
2011/6/15 6:00								
2011/6/15 8:00								
2011/6/15 10:00								
2011/6/15 12:00								
2011/6/15 14:00								
2011/6/15 16:00								
2011/6/15 18:00								
2011/6/15 20:00								
2011/6/15 22:00								
2011/6/16 0:00								

# 2F-3号機

※燃料頂部(TAF)からの水位=炉水位+4200[mm]

時間	炉圧 [MPa (gage)]	炉水位 [mm] 停止時	炉水温度[°C]	D/W圧力 [kPa(gage)]	D/W温度 [°C]	S/C圧力 [kPa(abs)]	S/C水位 [mm]	S/C温度 [°C]
2011/6/13 0:00	0.02	3300	31.4	10	30.2	110	2100	27
2011/6/13 2:00	0.02	3300	31.4	10	30.2	110	2100	27
2011/6/13 4:00	0.02	3300	31.3	10	30.2	110	2100	27
2011/6/13 6:00	0.02	3350	31.4	10	30.2	110	2100	27
2011/6/13 8:00	0.02	3350	31.4	10	30.2	110	2100	27
2011/6/13 10:00	0.02	3400	31.3	10	30.2	111	2100	27
2011/6/13 12:00	0.02	3400	31.4	10	30.2	110	2100	27
2011/6/13 14:00	0.02	3400	31.5	10	30.2	110	2100	27
2011/6/13 16:00	0.02	3400	31.4	10	30.2	110	2100	27
2011/6/13 18:00	0.02	3400	31.4	10	30.1	110	2100	27
2011/6/13 20:00	0.02	3400	31.5	10	30.2	110	2100	27
2011/6/13 22:00	0.02	3400	31.6	10	30.2	110	2100	27
2011/6/14 0:00	0.02	3400	31.7	10	30.2	110	2100	27
2011/6/14 2:00	0.02	3400	31.7	10	30.2	110	2100	27
2011/6/14 4:00	0.02	3400	31.8	10	30.2	110	2100	27
<b>2011/6/14 6:00</b>	<b>0.02</b>	<b>3450</b>	<b>31.9</b>	<b>10</b>	<b>30.2</b>	<b>110</b>	<b>2100</b>	<b>27</b>
2011/6/14 8:00								
2011/6/14 10:00								
2011/6/14 12:00								
2011/6/14 14:00								
2011/6/14 16:00								
2011/6/14 18:00								
2011/6/14 20:00								
2011/6/14 22:00								
2011/6/15 0:00								
2011/6/15 2:00								
2011/6/15 4:00								
2011/6/15 6:00								
2011/6/15 8:00								
2011/6/15 10:00								
2011/6/15 12:00								
2011/6/15 14:00								
2011/6/15 16:00								
2011/6/15 18:00								
2011/6/15 20:00								
2011/6/15 22:00								
2011/6/16 0:00								

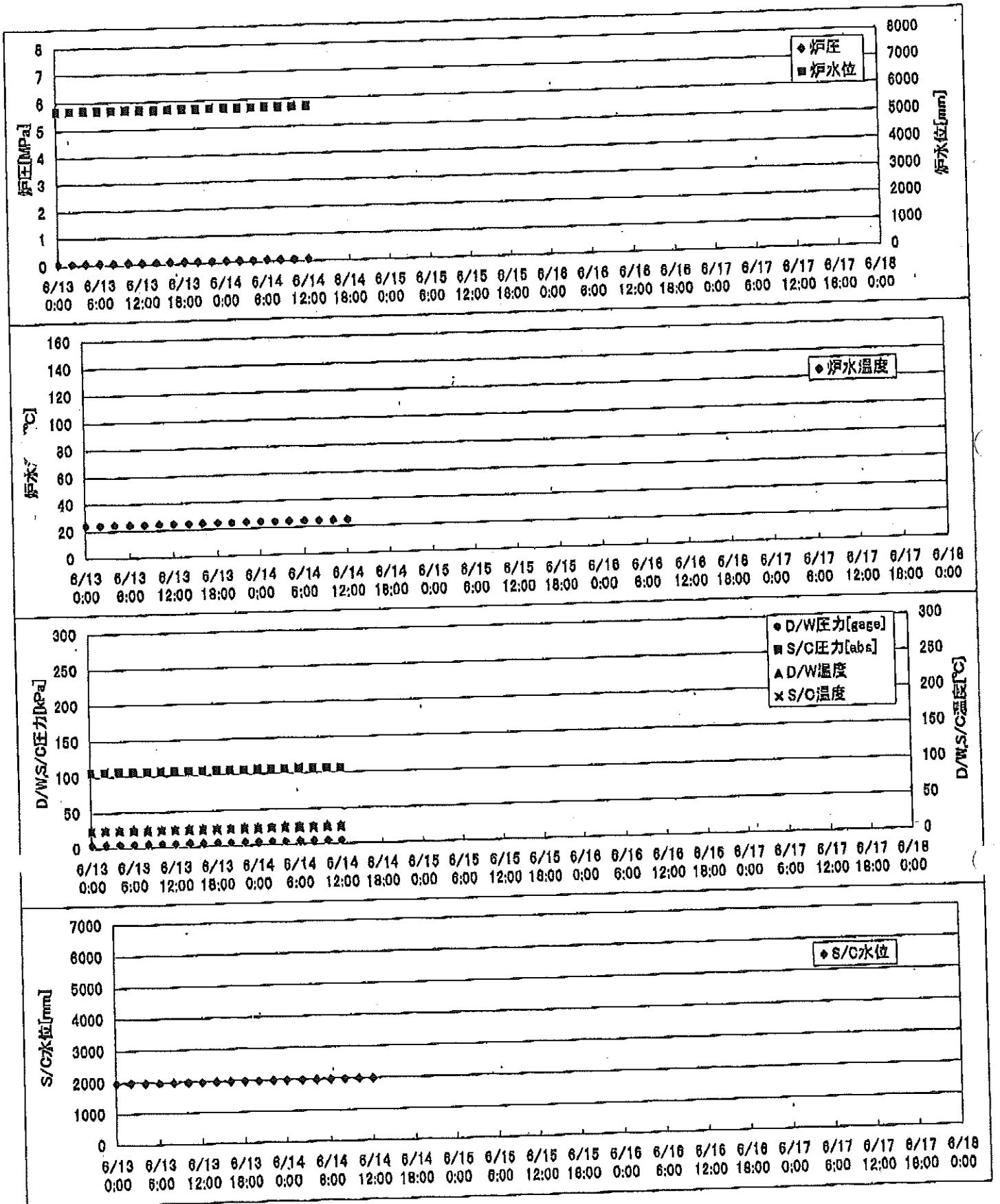
# 2F-4号機

※燃料頂部(TAF)からの水位=炉水位+4200[mm]

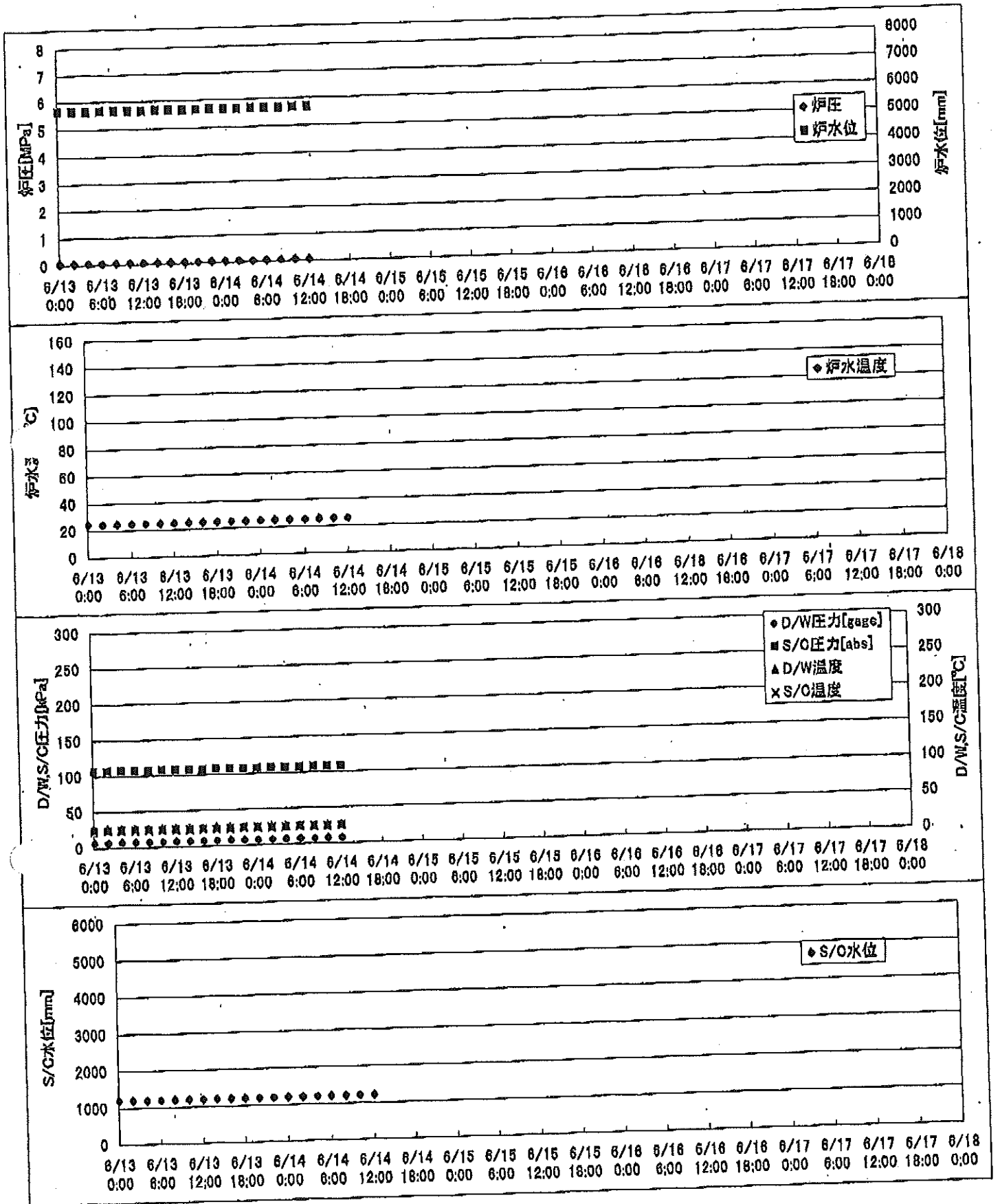
時間	炉圧 [MPa (gage)]	炉水位 [mm] 停止時	炉水温度[°C]	D/W圧力 [kPa(gage)]	D/W温度 [°C]	S/C圧力 [kPa(abs)]	S/C水位 [mm]	S/C温度 [°C]
2011/6/13 0:00	0.07	3950	30.3	6	29.1	106	2000	28
2011/6/13 2:00	0.07	3950	29.9	7	29.1	106	2000	28
2011/6/13 4:00	0.07	3950	29.7	7	29.1	106	2000	28
2011/6/13 6:00	0.07	3950	29.7	7	29.1	106	2050	28
2011/6/13 8:00	0.07	4000	29.6	7	29.1	106	2050	28
2011/6/13 10:00	0.07	4000	29.6	7	29.1	106	2000	28
2011/6/13 12:00	0.07	4000	29.7	7	29.1	106	2000	28
2011/6/13 14:00	0.07	4000	29.6	7	29.1	106	2000	28
2011/6/13 16:00	0.07	4000	29.6	7	29.1	106	2000	28
2011/6/13 18:00	0.07	4000	29.8	7	29.1	106	2000	28
2011/6/13 20:00	0.07	4050	29.9	7	29.1	106	2000	28
2011/6/13 22:00	0.07	4050	30.0	6	29.1	106	2000	28
2011/6/14 0:00	0.07	3950	30.1	6	29.1	106	2000	28
2011/6/14 2:00	0.07	3950	30.2	6	29.1	106	2000	28
2011/6/14 4:00	0.07	4000	30.3	6	29.1	106	2000	28
<b>2011/6/14 6:00</b>	<b>0.07</b>	<b>4000</b>	<b>30.4</b>	<b>6</b>	<b>29.1</b>	<b>106</b>	<b>2000</b>	<b>28</b>
2011/6/14 8:00								
2011/6/14 10:00								
2011/6/14 12:00								
2011/6/14 14:00								
2011/6/14 16:00								
2011/6/14 18:00								
2011/6/14 20:00								
2011/6/14 22:00								
2011/6/15 0:00								
2011/6/15 2:00								
2011/6/15 4:00								
2011/6/15 6:00								
2011/6/15 8:00								
2011/6/15 10:00								
2011/6/15 12:00								
2011/6/15 14:00								
2011/6/15 16:00								
2011/6/15 18:00								
2011/6/15 20:00								
2011/6/15 22:00								
2011/6/16 0:00								



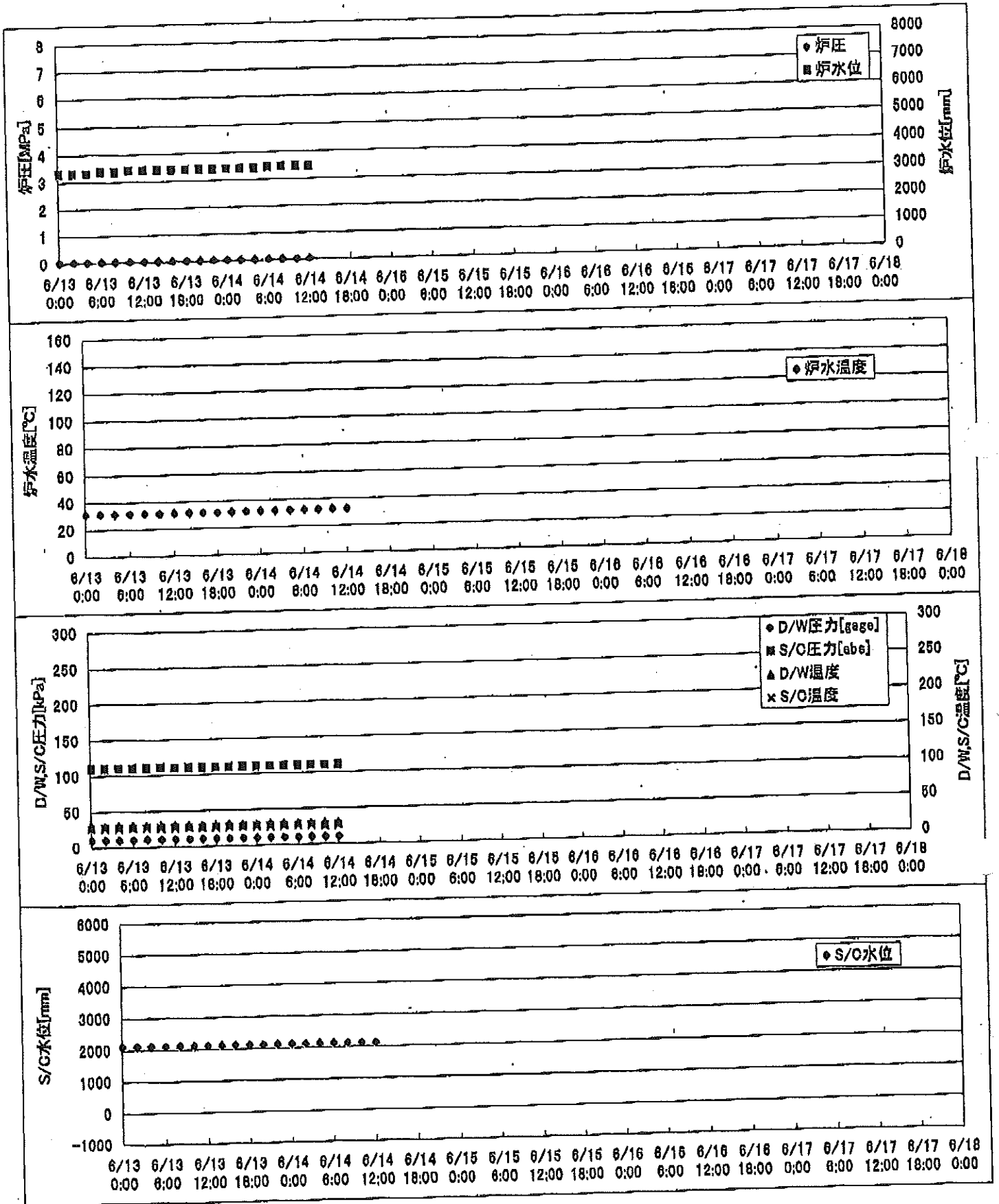
2F-1号機



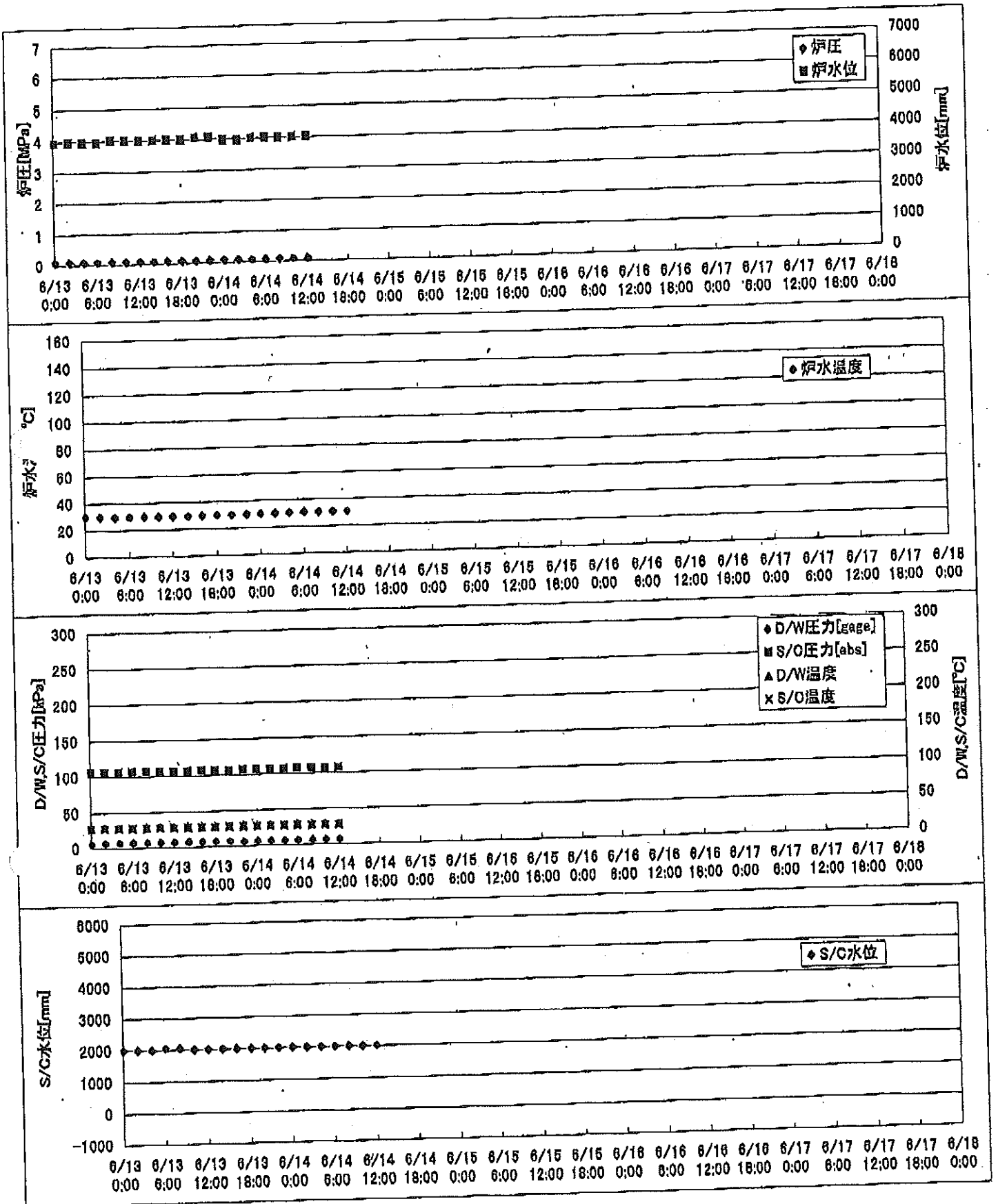
2F-2号機



2F-3号機



2F-4号機









# 2F-4号機

※燃料頂部(TAF)からの水位=炉水位+4200[mm]

時間	炉圧 [MPa (gage)]	炉水位 [mm] 停止時	炉水温度[°C]	D/W圧力 [kPa(gage)]	D/W温度 [°C]	S/C圧力 [kPa(abs)]	S/C水位 [mm]	S/C温度 [°C]
2011/6/13 0:00	0.07	3950	30.3	6	29.1	106	2000	28
2011/6/13 2:00	0.07	3950	29.9	7	29.1	106	2000	28
2011/6/13 4:00	0.07	3950	29.7	7	29.1	106	2000	28
2011/6/13 6:00	0.07	3950	29.7	7	29.1	106	2050	28
2011/6/13 8:00	0.07	4000	29.6	7	29.1	106	2050	28
2011/6/13 10:00	0.07	4000	29.6	7	29.1	106	2000	28
2011/6/13 12:00	0.07	4000	29.7	7	29.1	106	2000	28
2011/6/13 14:00	0.07	4000	29.6	7	29.1	106	2000	28
2011/6/13 16:00	0.07	4000	29.6	7	29.1	106	2000	28
2011/6/13 18:00	0.07	4000	29.8	7	29.1	106	2000	28
2011/6/13 20:00	0.07	4050	29.9	7	29.1	106	2000	28
2011/6/13 22:00	0.07	4050	30.0	6	29.1	106	2000	28
2011/6/14 0:00	0.07	3950	30.1	6	29.1	106	2000	28
2011/6/14 2:00	0.07	3950	30.2	6	29.1	106	2000	28
2011/6/14 4:00	0.07	4000	30.3	6	29.1	106	2000	28
2011/6/14 6:00	0.07	4000	30.4	6	29.1	106	2000	28
2011/6/14 8:00	0.07	4000	30.4	6	29.2	106	2000	28
2011/6/14 10:00	0.07	4000	30.5	6	29.1	106	2000	28
2011/6/14 12:00	0.07	4000	30.5	6	29.3	106	2000	28
2011/6/14 14:00								
2011/6/14 16:00								
2011/6/14 18:00								
2011/6/14 20:00								
2011/6/14 22:00								
2011/6/15 0:00								
2011/6/15 2:00								
2011/6/15 4:00								
2011/6/15 6:00								
2011/6/15 8:00								
2011/6/15 10:00								
2011/6/15 12:00								
2011/6/15 14:00								
2011/6/15 16:00								
2011/6/15 18:00								
2011/6/15 20:00								
2011/6/15 22:00								
2011/6/16 0:00								