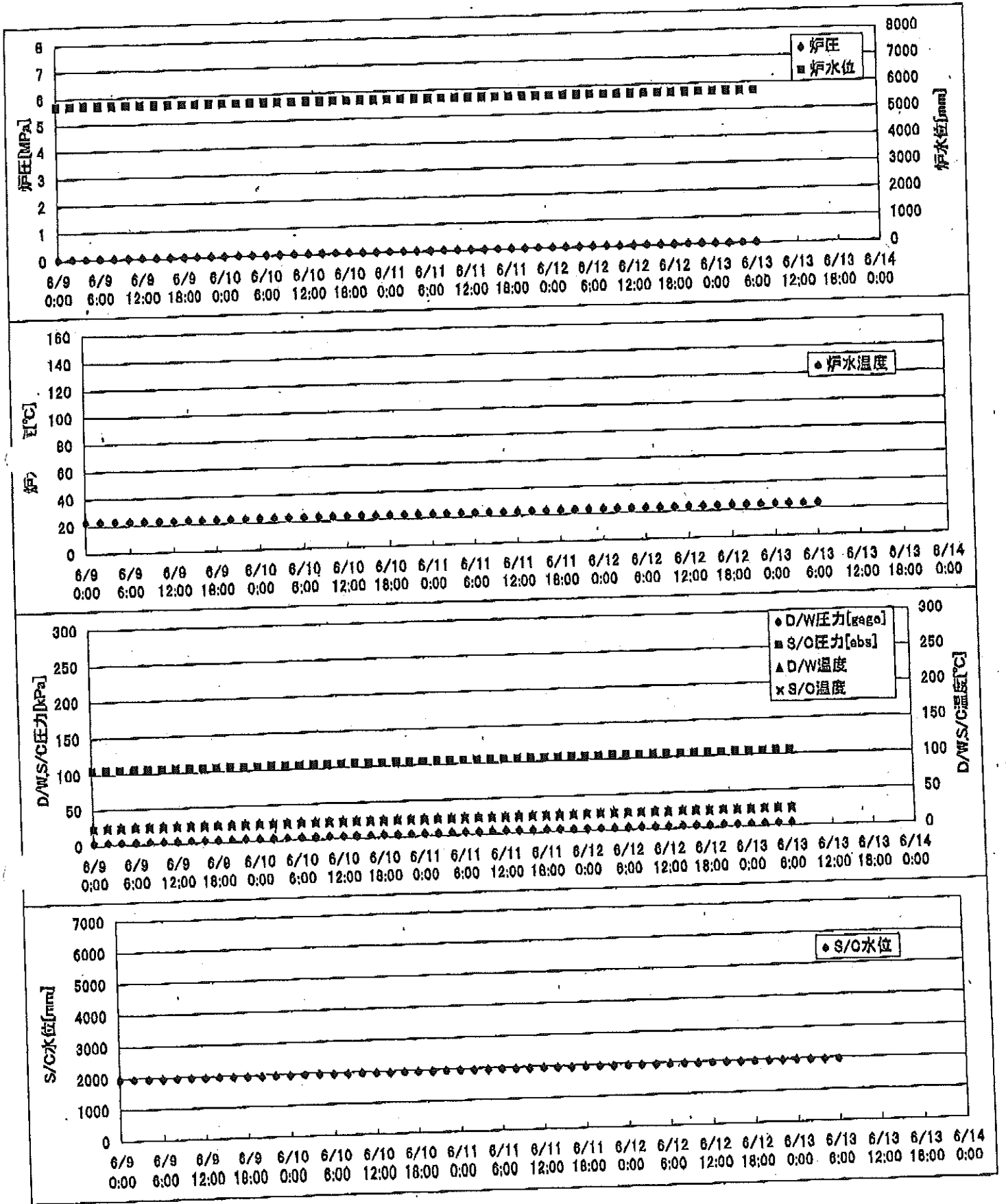
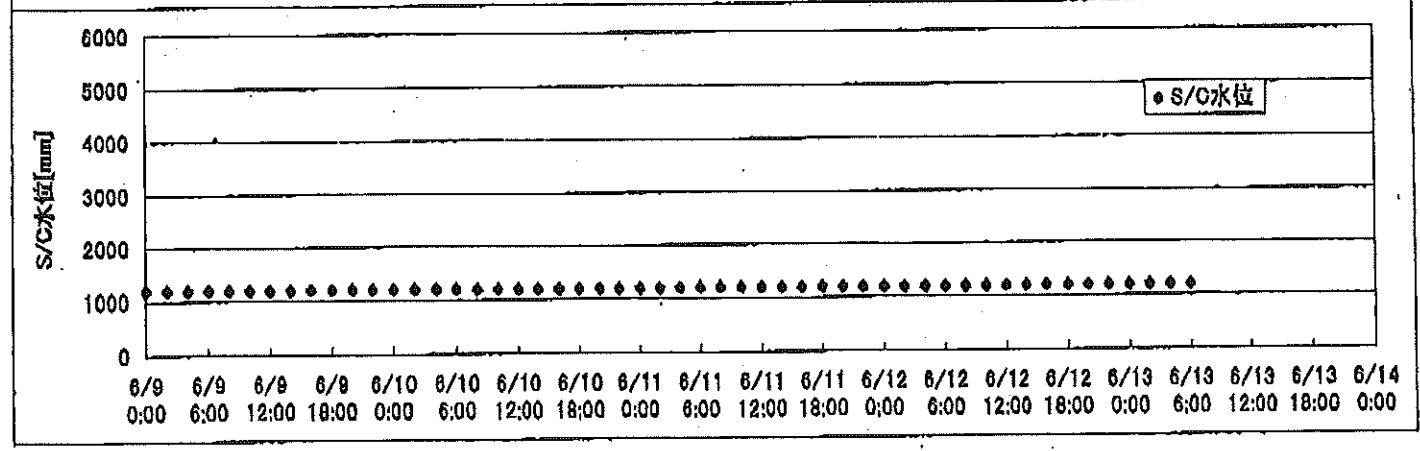
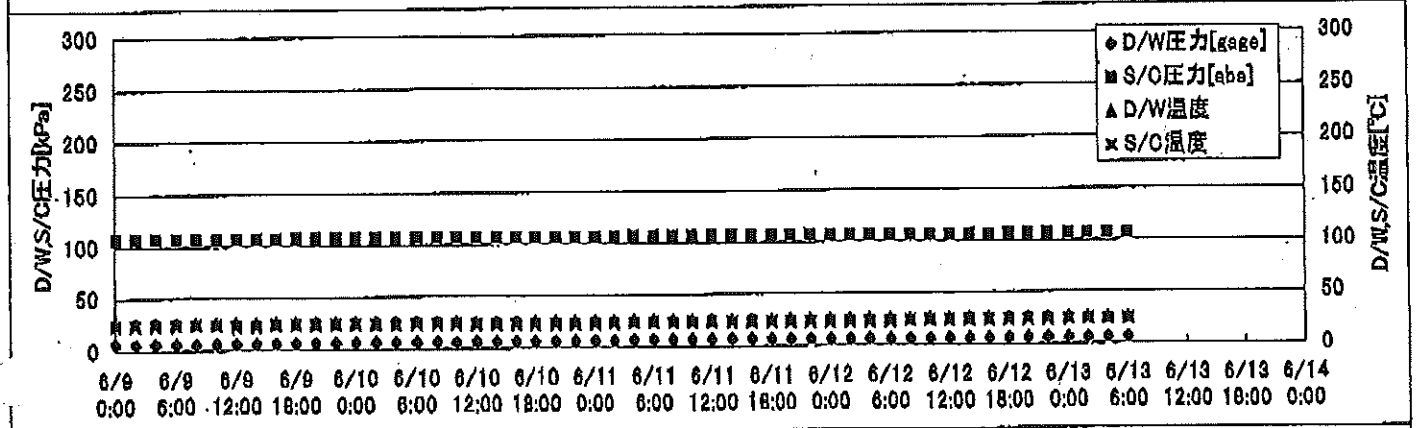
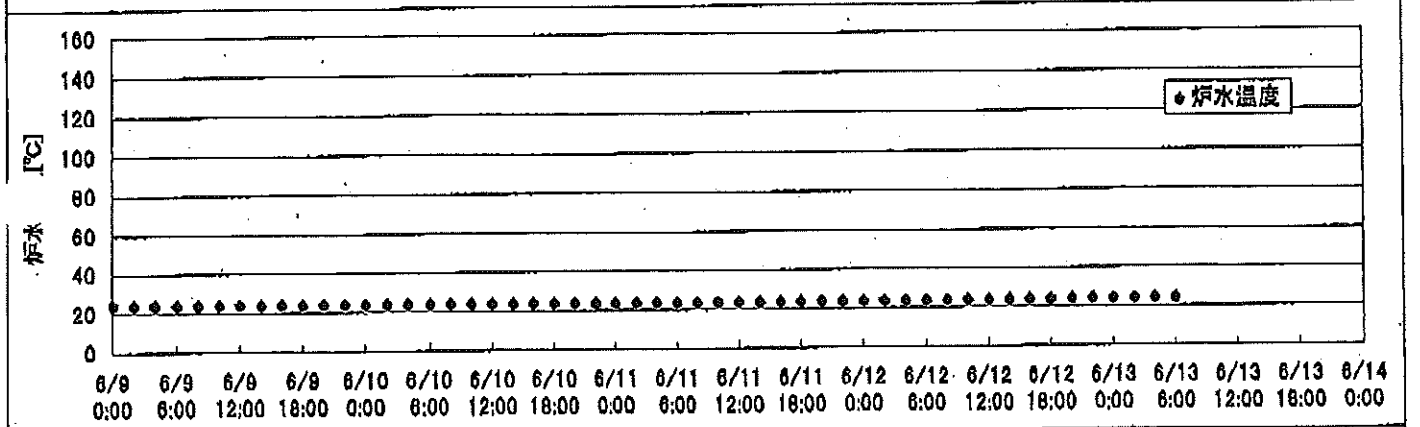
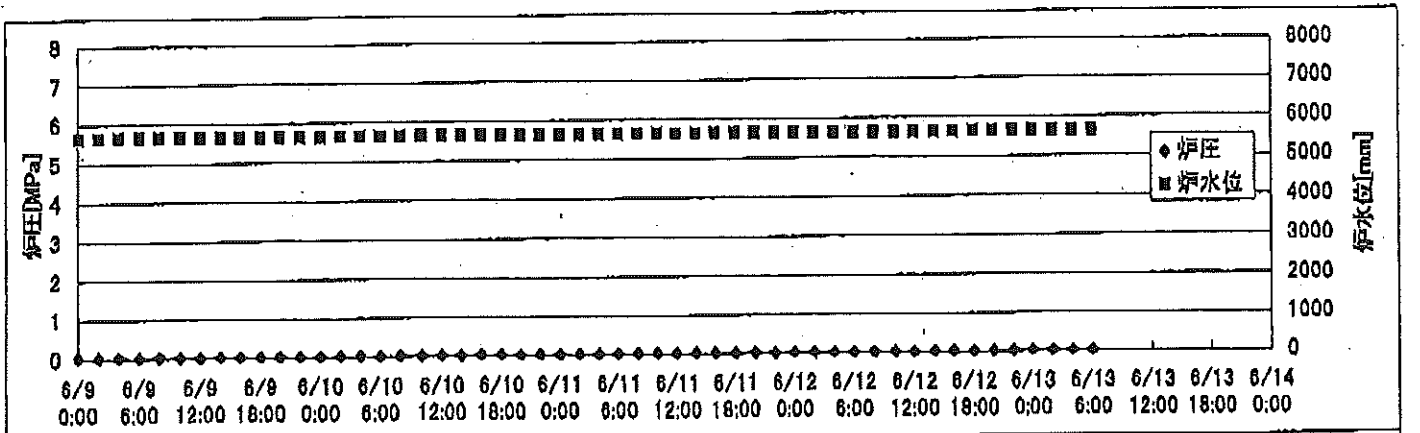


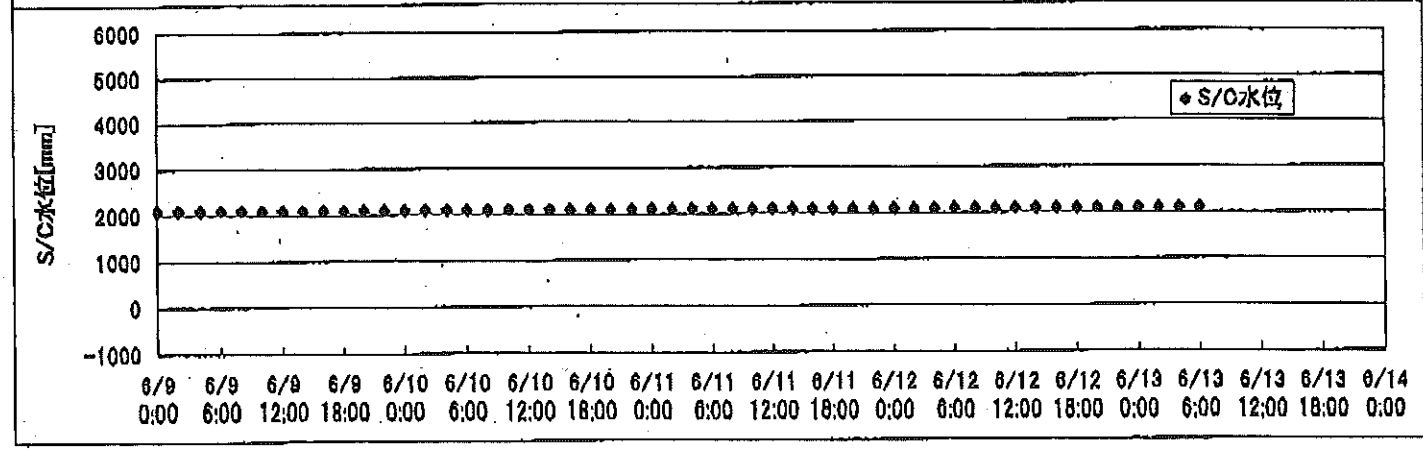
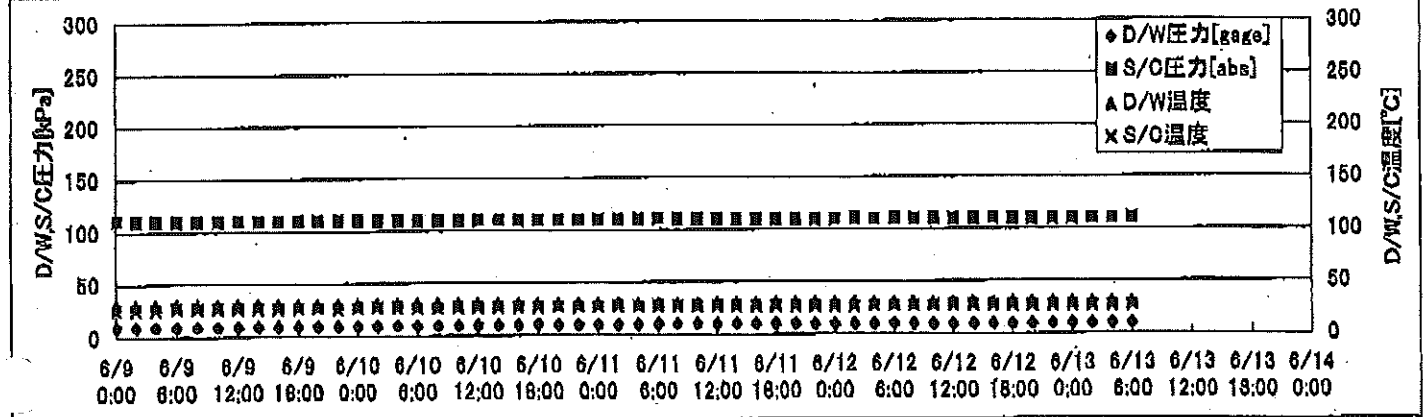
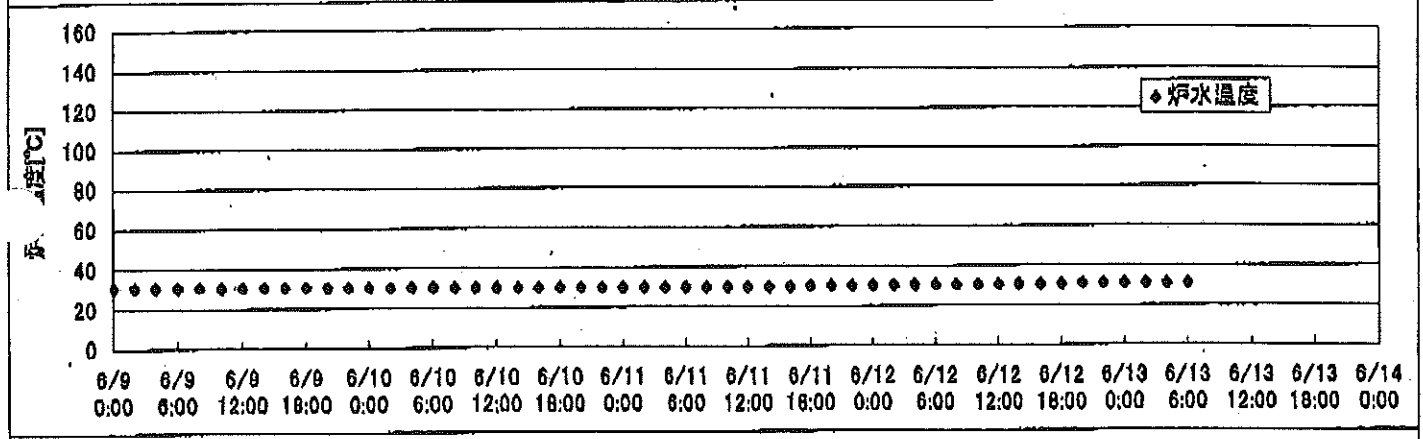
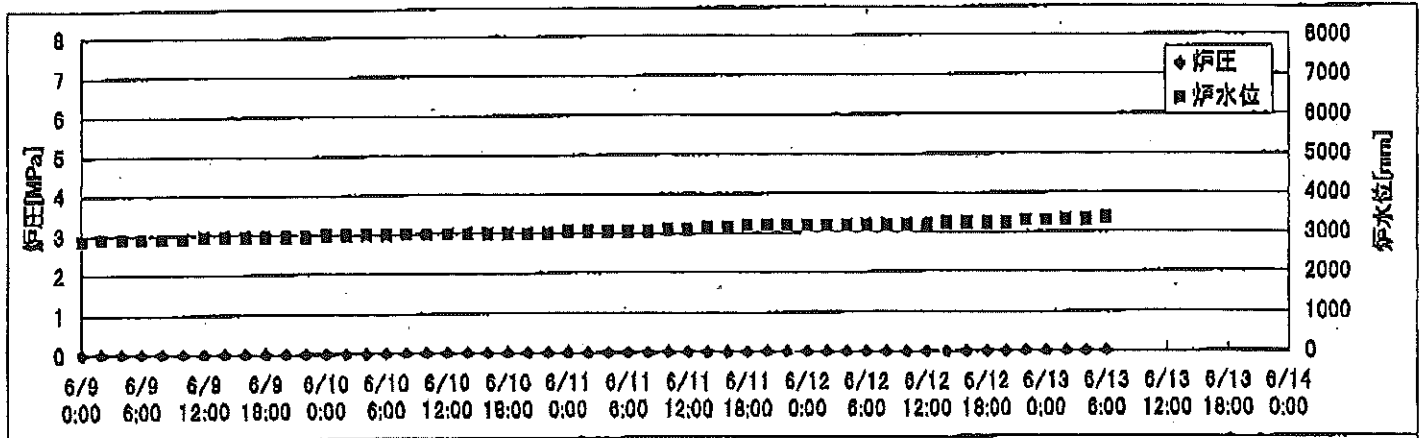
2F-1号機



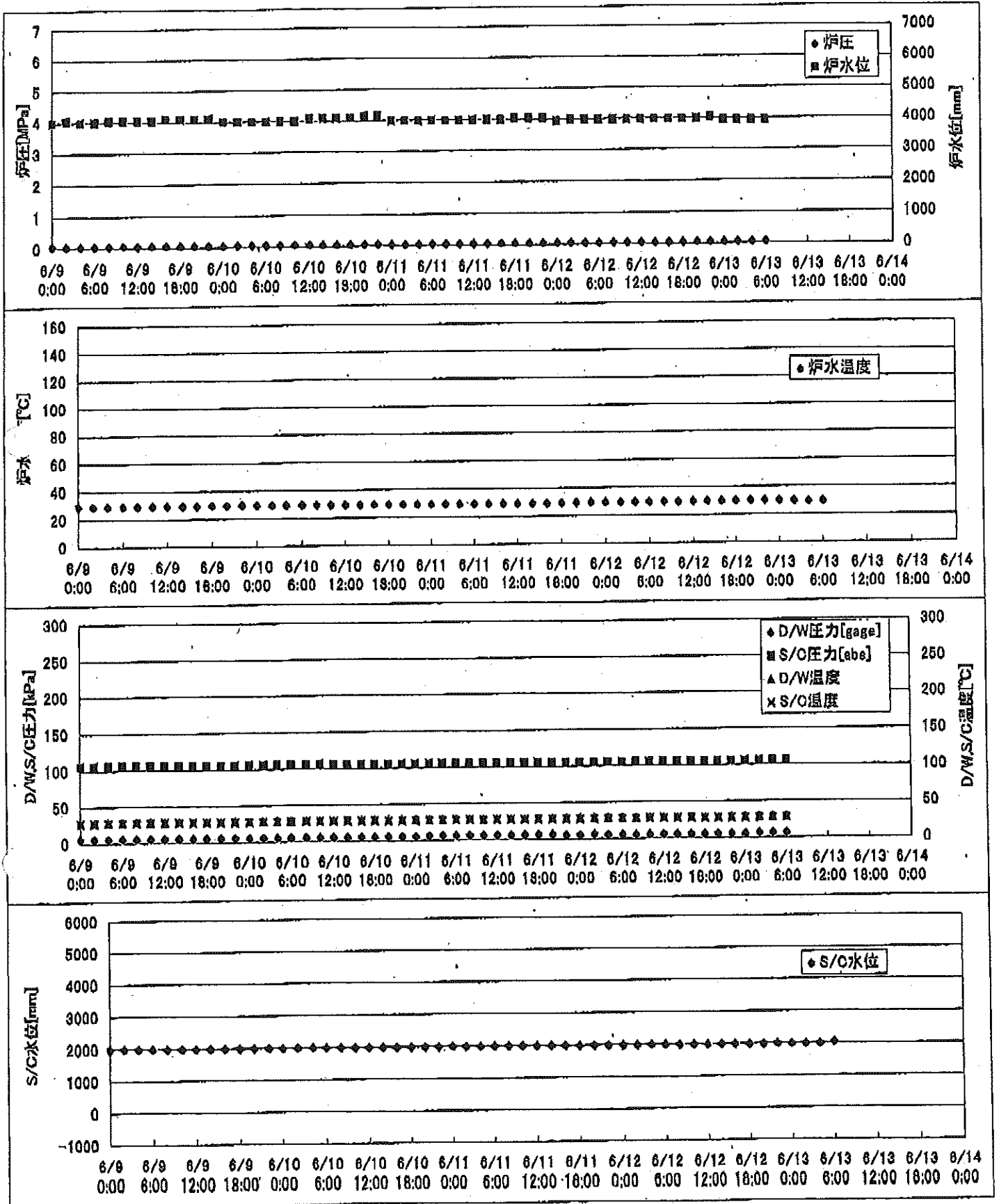
2F-2号機



2F-3号機



2F-4号機



2F-1号機

※燃料頂部(TAF)からの水位=炉水位+4200[mm]

時間	炉圧 [MPa (gage)]	炉水位 [mm] 停止時	炉水温度[°C]	D/W圧力 [kPa(gage)]	D/W温度 [°C]	S/C圧力 [kPa(abs)]	S/C水位 [mm]	S/C温度 [°C]
2011/6/10 12:00	0.05	5700	23.4	4	25.8	105	1959	23
2011/6/10 14:00	0.05	5700	23.5	4	25.8	105	1959	23
2011/6/10 16:00	0.05	5700	23.4	4	25.8	105	1958	23
2011/6/10 18:00	0.05	5700	23.4	4	25.8	105	1958	23
2011/6/10 20:00	0.05	5700	23.4	4	25.8	105	1958	23
2011/6/10 22:00	0.05	5700	23.4	4	25.8	105	1958	23
2011/6/11 0:00	0.05	5700	23.4	4	25.8	105	1958	23
2011/6/11 2:00	0.05	5700	23.4	4	25.8	105	1958	23
2011/6/11 4:00	0.05	5700	23.4	4	25.8	105	1958	23
2011/6/11 6:00	0.05	5700	23.4	4	25.8	105	1958	23
2011/6/11 8:00	0.05	5700	23.4	4	25.8	105	1958	23
2011/6/11 10:00	0.05	5700	23.4	4	25.8	105	1958	23
2011/6/11 12:00	0.05	5700	23.4	5	25.8	105	1958	23
2011/6/11 14:00	0.05	5700	23.5	5	25.8	105	1958	23
2011/6/11 16:00	0.05	5700	23.4	5	25.8	105	1959	23
2011/6/11 18:00	0.05	5700	23.4	4	25.8	105	1958	23
2011/6/11 20:00	0.05	5700	23.6	4	25.8	105	1958	23
2011/6/11 22:00	0.05	5700	23.6	4	25.8	105	1958	23
2011/6/12 0:00	0.05	5700	23.6	4	25.7	105	1958	24
2011/6/12 2:00	0.05	5700	23.7	4	25.8	105	1959	24
2011/6/12 4:00	0.05	5700	23.7	4	25.8	105	1958	24
2011/6/12 6:00	0.05	5700	23.7	4	25.8	105	1959	24
2011/6/12 8:00	0.05	5700	23.7	4	25.6	105	1959	24
2011/6/12 10:00	0.05	5700	23.7	4	25.8	105	1959	24
2011/6/12 12:00	0.05	5700	23.8	4	25.8	105	1958	24
2011/6/12 14:00	0.05	5700	23.8	4	25.8	105	1960	24
2011/6/12 16:00	0.05	5700	23.8	4	25.8	105	1959	24
2011/6/12 18:00	0.05	5700	23.9	4	25.8	105	1959	24
2011/6/12 20:00	0.05	5700	23.9	4	25.8	105	1959	24
2011/6/12 22:00	0.05	5700	23.9	4	25.8	105	1960	24
2011/6/13 0:00	0.05	5700	24.0	4	25.8	105	1960	24
2011/6/13 2:00	0.05	5700	24.0	4	25.9	105	1960	24
2011/6/13 4:00	0.05	5700	24.0	4	26.0	105	1959	24
2011/6/13 6:00	0.05	5700	24.0	4	26.0	105	1959	24
2011/6/13 8:00								
2011/6/13 10:00								
2011/6/13 12:00								

2F-2号機

※燃料頂部(TAF)からの水位=炉水位+4200[mm]

時間	炉圧 [MPa (gage)]	炉水位 [mm] 停止時	炉水温度[°C]	D/W圧力 [kPa(gage)]	D/W温度 [°C]	S/C圧力 [kPa(abs)]	S/C水位 [mm]	S/C温度 [°C]
2011/6/10 12:00	0.03	5650	23.9	7	25.9	107	1200	23
2011/6/10 14:00	0.03	5650	23.9	7	25.9	107	1200	23
2011/6/10 16:00	0.04	5650	23.9	7	25.9	107	1200	23
2011/6/10 18:00	0.04	5650	23.9	7	25.8	107	1200	23
2011/6/10 20:00	0.03	5650	23.9	7	25.9	107	1200	23
2011/6/10 22:00	0.03	5650	23.8	7	25.9	107	1200	23
2011/6/11 0:00	0.03	5650	23.8	7	25.9	107	1200	23
2011/6/11 2:00	0.03	5650	23.8	7	25.9	107	1200	23
2011/6/11 4:00	0.03	5650	23.8	7	25.9	107	1200	23
2011/6/11 6:00	0.03	5650	23.8	7	25.9	107	1200	23
2011/6/11 8:00	0.04	5650	23.8	7	25.9	107	1200	23
2011/6/11 10:00	0.04	5650	23.8	7	25.9	107	1200	23
2011/6/11 12:00	0.04	5650	23.8	7	25.9	107	1200	23
2011/6/11 14:00	0.04	5650	23.8	7	25.9	107	1200	23
2011/6/11 16:00	0.03	5650	23.8	7	25.9	107	1200	23
2011/6/11 18:00	0.03	5650	23.8	7	25.9	107	1200	23
2011/6/11 20:00	0.04	5650	23.9	7	26.0	107	1200	23
2011/6/11 22:00	0.03	5650	23.9	7	26.0	107	1200	23
2011/6/12 0:00	0.04	5650	23.9	7	26.2	107	1200	23
2011/6/12 2:00	0.04	5650	24.0	7	26.2	107	1200	23
2011/6/12 4:00	0.04	5650	24.0	7	26.2	107	1200	23
2011/6/12 6:00	0.03	5650	24.0	7	26.0	107	1200	23
2011/6/12 8:00	0.04	5650	24.1	7	25.9	107	1200	24
2011/6/12 10:00	0.04	5650	24.1	7	26.0	107	1200	24
2011/6/12 12:00	0.03	5650	24.1	7	26.0	107	1200	24
2011/6/12 14:00	0.04	5650	24.1	7	26.0	107	1200	24
2011/6/12 16:00	0.04	5650	24.2	7	26.0	107	1200	24
2011/6/12 18:00	0.03	5650	24.2	7	26.0	107	1200	24
2011/6/12 20:00	0.04	5650	24.3	7	26.0	107	1200	24
2011/6/12 22:00	0.04	5650	24.4	7	26.0	107	1200	24
2011/6/13 0:00	0.04	5650	24.4	7	26.0	107	1200	24
2011/6/13 2:00	0.04	5650	24.4	7	26.0	107	1200	24
2011/6/13 4:00	0.04	5650	24.5	7	26.0	107	1200	24
2011/6/13 6:00	0.03	5650	24.5	7	26.2	107	1200	24
2011/6/13 8:00								
2011/6/13 10:00								
2011/6/13 12:00								

2F-3号機

※燃料頂部(TAF)からの水位=炉水位+4200[mm]

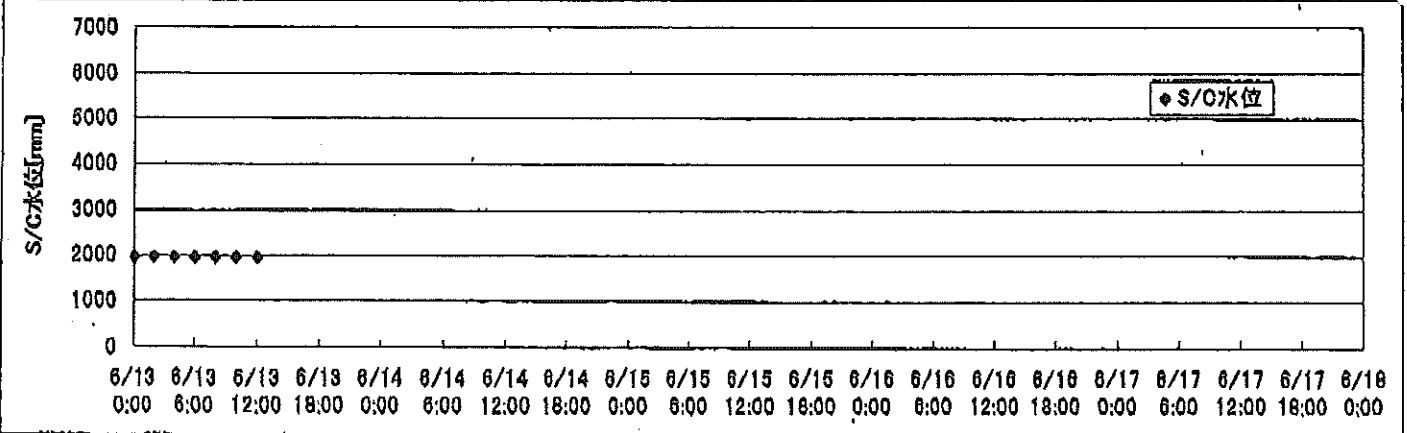
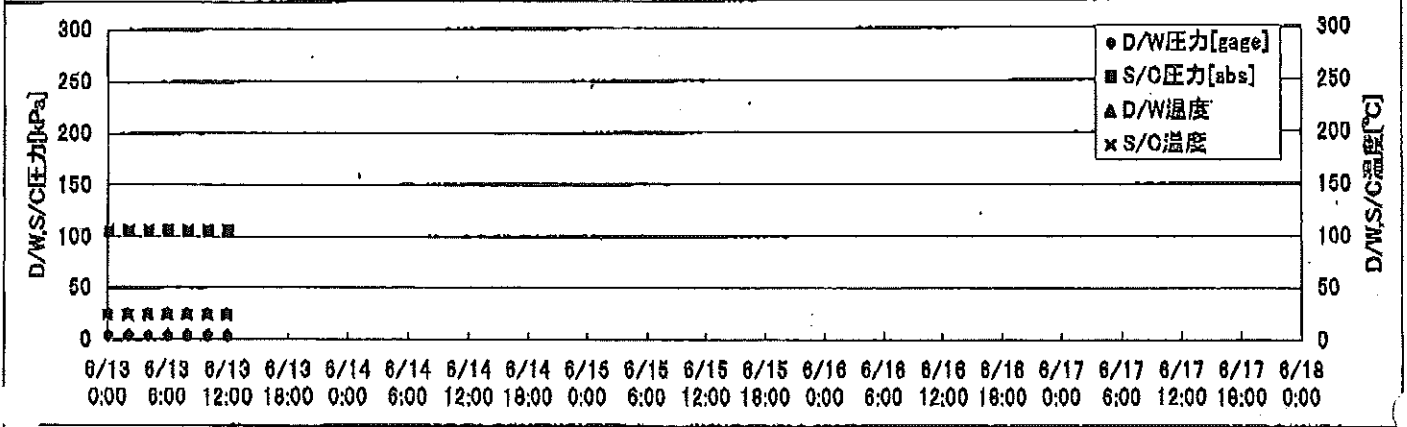
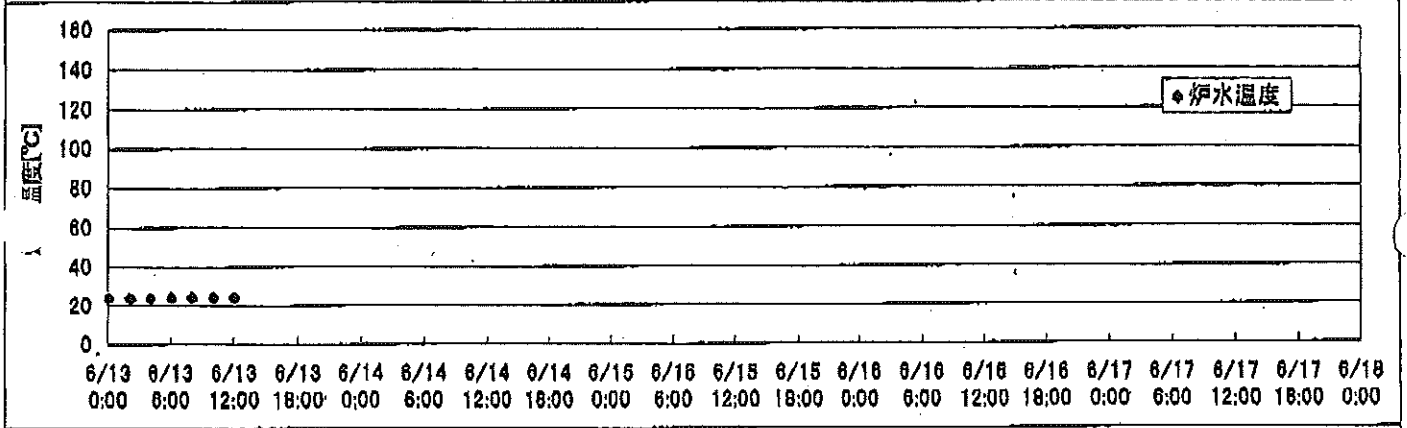
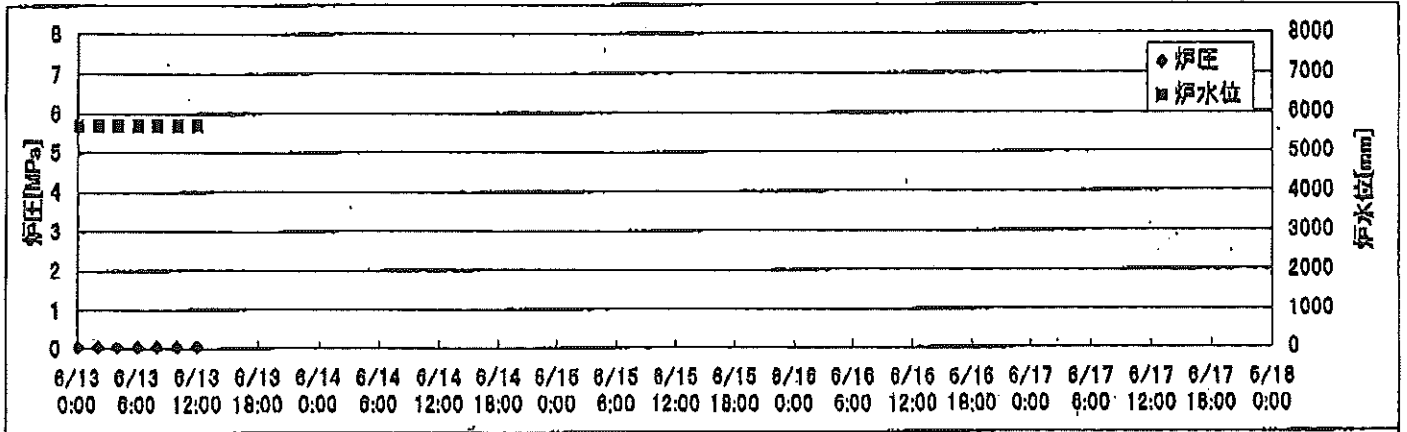
時間	炉圧 [MPa (gage)]	炉水位 [mm] 停止時	炉水温度[°C]	D/W圧力 [kPa(gage)]	D/W温度 [°C]	S/C圧力 [kPa(abs)]	S/C水位 [mm]	S/C温度 [°C]
2011/6/10 12:00	0.01	3000	30.3	10	30.4	110	2100	27
2011/6/10 14:00	0.01	3000	30.2	10	30.4	110	2100	27
2011/6/10 16:00	0.01	3000	30.2	10	30.4	110	2100	27
2011/6/10 18:00	0.01	3000	30.2	11	30.4	110	2100	27
2011/6/10 20:00	0.01	3000	30.2	10	30.4	110	2100	27
2011/6/10 22:00	0.01	3000	30.1	10	30.4	110	2100	27
2011/6/11 0:00	0.01	3050	30.1	10	30.3	110	2100	27
2011/6/11 2:00	0.01	3050	30.1	10	30.3	110	2100	27
2011/6/11 4:00	0.01	3050	30.1	10	30.3	110	2100	27
2011/6/11 6:00	0.01	3050	30.1	10	30.3	111	2100	27
2011/6/11 8:00	0.01	3050	30.1	10	30.2	110	2100	27
2011/6/11 10:00	0.02	3100	30.1	11	30.3	110	2100	27
2011/6/11 12:00	0.02	3100	30.2	11	30.3	110	2100	27
2011/6/11 14:00	0.02	3150	30.1	11	30.3	110	2100	27
2011/6/11 16:00	0.02	3150	30.2	11	30.3	110	2100	27
2011/6/11 18:00	0.02	3200	30.4	11	30.2	110	2100	27
2011/6/11 20:00	0.02	3200	30.5	10	30.2	110	2100	27
2011/6/11 22:00	0.02	3200	30.6	10	30.3	110	2100	27
2011/6/12 0:00	0.02	3200	30.6	10	30.1	110	2100	27
2011/6/12 2:00	0.02	3200	30.7	10	30.2	111	2100	27
2011/6/12 4:00	0.02	3200	30.7	10	30.3	110	2100	27
2011/6/12 6:00	0.02	3200	30.7	10	30.2	111	2100	27
2011/6/12 8:00	0.02	3200	30.8	10	30.1	110	2100	27
2011/6/12 10:00	0.02	3200	30.8	10	30.2	111	2100	27
2011/6/12 12:00	0.02	3200	30.8	10	30.2	110	2100	27
2011/6/12 14:00	0.02	3250	30.9	10	30.2	110	2100	27
2011/6/12 16:00	0.02	3250	30.9	10	30.2	111	2100	27
2011/6/12 18:00	0.02	3250	31.0	10	30.3	110	2100	27
2011/6/12 20:00	0.02	3250	31.2	10	30.2	110	2100	27
2011/6/12 22:00	0.02	3300	31.4	10	30.2	110	2100	27
2011/6/13 0:00	0.02	3300	31.4	10	30.2	110	2100	27
2011/6/13 2:00	0.02	3300	31.4	10	30.2	110	2100	27
2011/6/13 4:00	0.02	3300	31.3	10	30.2	110	2100	27
2011/6/13 6:00	0.02	3350	31.4	10	30.2	110	2100	27
2011/6/13 8:00								
2011/6/13 10:00								
2011/6/13 12:00								

2F-4号機

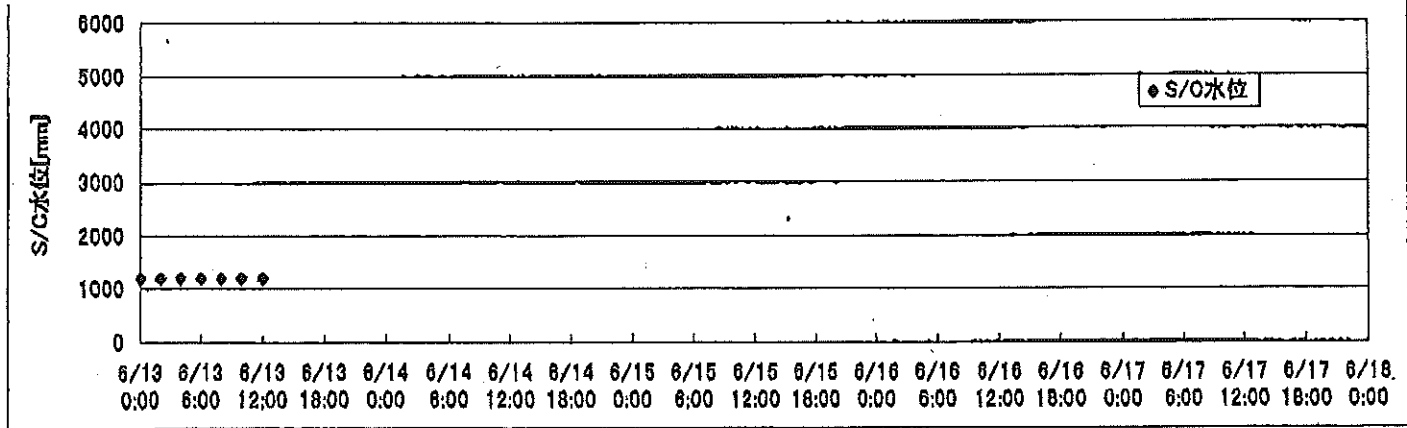
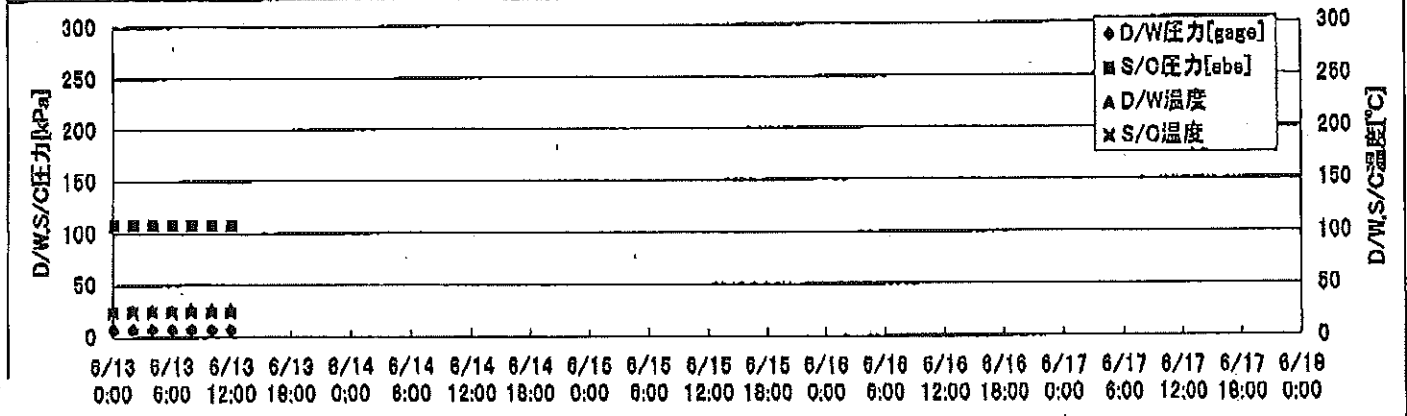
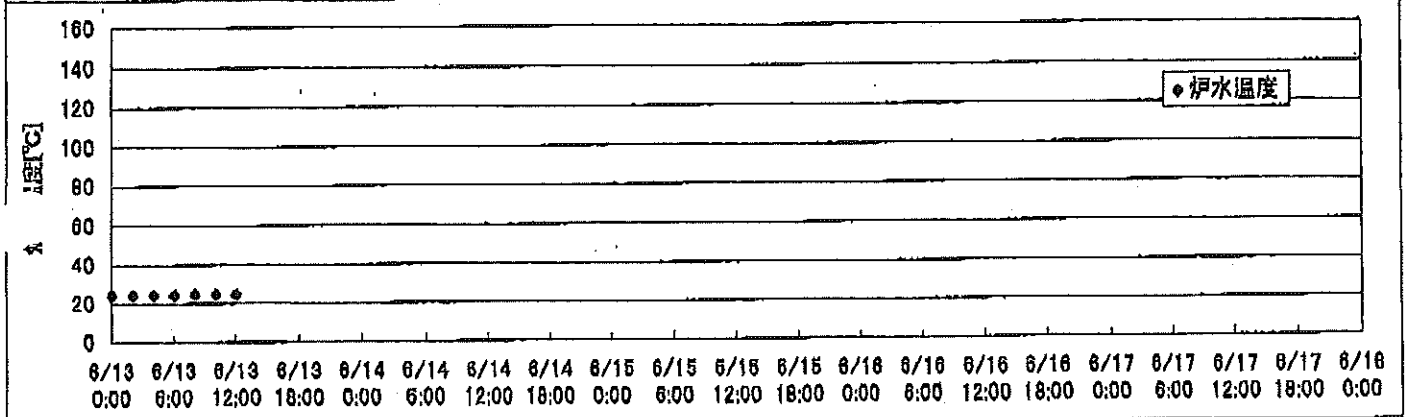
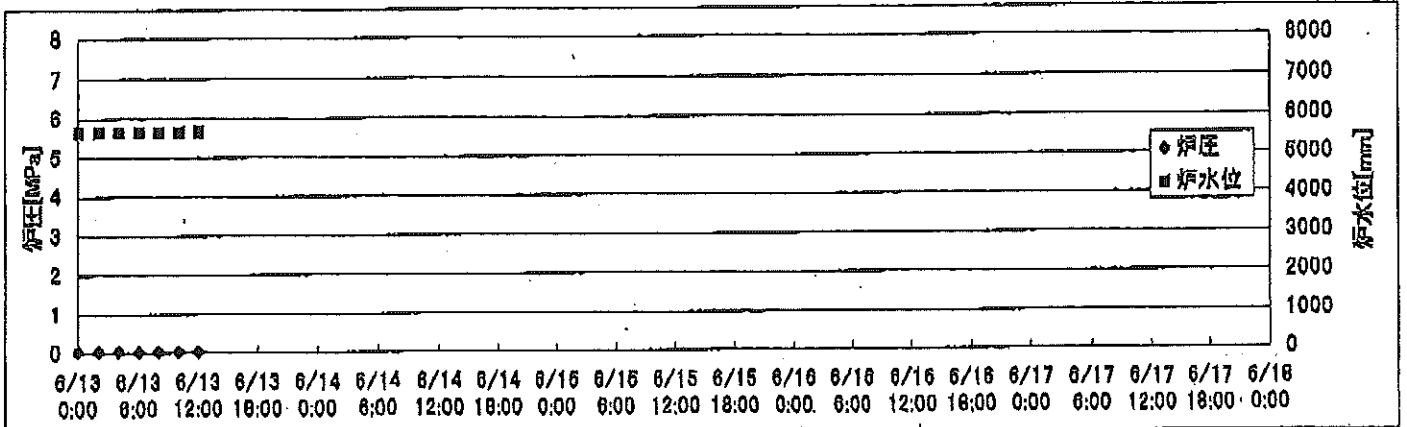
※燃料頂部(TAF)からの水位=炉水位+4200[mm]

時間	炉圧 [MPa (gage)]	炉水位 [mm] 停止時	炉水温度[°C]	D/W圧力 [kPa(gage)]	D/W温度 [°C]	S/C圧力 [kPa(abs)]	S/C水位 [mm]	S/C温度 [°C]
2011/6/10 12:00	0.07	4100	29.7	6	28.8	106	2000	28
2011/6/10 14:00	0.07	4100	29.7	6	28.9	106	2000	28
2011/6/10 16:00	0.07	4100	29.7	6	28.9	106	2000	28
2011/6/10 18:00	0.07	4100	29.6	6	29.0	106	2000	28
2011/6/10 20:00	0.07	4150	29.6	6	29.0	106	2000	28
2011/6/10 22:00	0.07	4150	29.5	6	29.1	106	2000	28
2011/6/11 0:00	0.06	4000	29.5	6	29.1	106	2000	28
2011/6/11 2:00	0.06	4000	29.4	7	28.9	106	2000	28
2011/6/11 4:00	0.06	4000	29.4	7	28.9	106	2000	28
2011/6/11 6:00	0.07	4000	29.4	7	29.1	106	2000	28
2011/6/11 8:00	0.07	4000	29.4	7	29.1	106	2000	28
2011/6/11 10:00	0.07	4000	29.5	7	29.0	106	2000	28
2011/6/11 12:00	0.07	4000	29.5	7	29.0	106	2000	28
2011/6/11 14:00	0.07	4000	29.5	7	29.0	106	2000	28
2011/6/11 16:00	0.07	4000	29.5	7	29.0	106	2000	28
2011/6/11 18:00	0.07	4050	29.6	7	28.9	106	2000	28
2011/6/11 20:00	0.07	4050	29.8	7	28.9	106	2000	28
2011/6/11 22:00	0.07	4050	29.9	6	29.0	106	2000	28
2011/6/12 0:00	0.07	3950	29.9	6	29.1	106	2000	28
2011/6/12 2:00	0.07	4000	29.9	7	29.6	106	2000	28
2011/6/12 4:00	0.07	4000	30.0	6	29.1	106	2000	28
2011/6/12 6:00	0.07	4000	30.0	6	29.1	106	2000	28
2011/6/12 8:00	0.07	4000	30.1	6	29.0	106	2000	28
2011/6/12 10:00	0.07	4000	30.1	6	29.1	106	2000	28
2011/6/12 12:00	0.07	4000	30.1	6	29.1	106	2000	28
2011/6/12 14:00	0.07	4000	30.1	6	29.0	106	2000	28
2011/6/12 16:00	0.07	4000	30.2	6	29.0	106	2000	28
2011/6/12 18:00	0.07	4000	30.3	6	29.0	106	2000	28
2011/6/12 20:00	0.07	4000	30.4	6	29.0	106	2000	28
2011/6/12 22:00	0.07	4050	30.5	6	29.1	106	2000	28
2011/6/13 0:00	0.07	3950	30.3	6	29.1	106	2000	28
2011/6/13 2:00	0.07	3950	29.9	7	29.1	106	2000	28
2011/6/13 4:00	0.07	3950	29.7	7	29.1	106	2000	28
2011/6/13 6:00	0.07	3950	29.7	7	29.1	106	2050	28
2011/6/13 8:00								
2011/6/13 10:00								
2011/6/13 12:00								

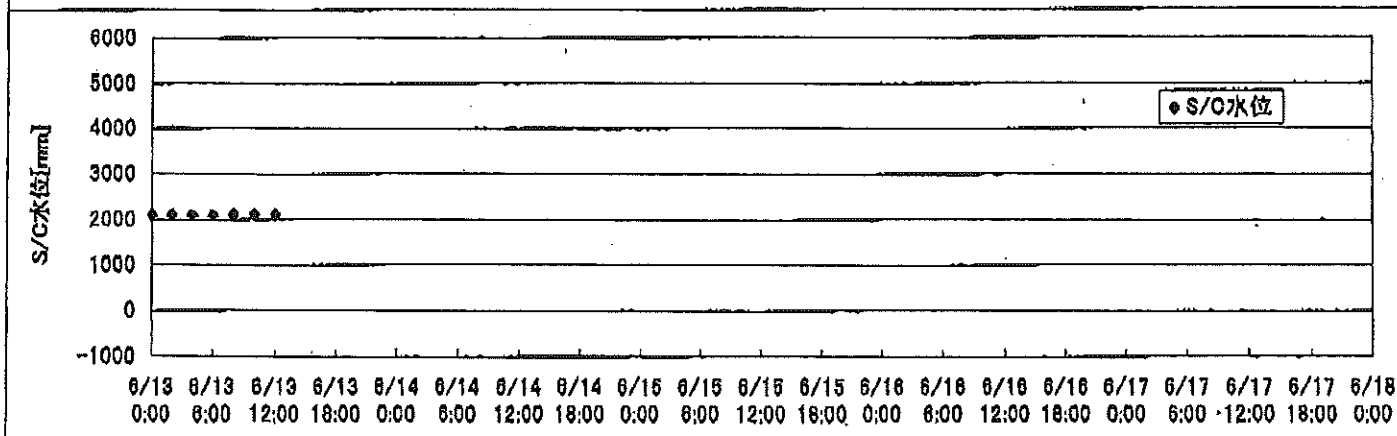
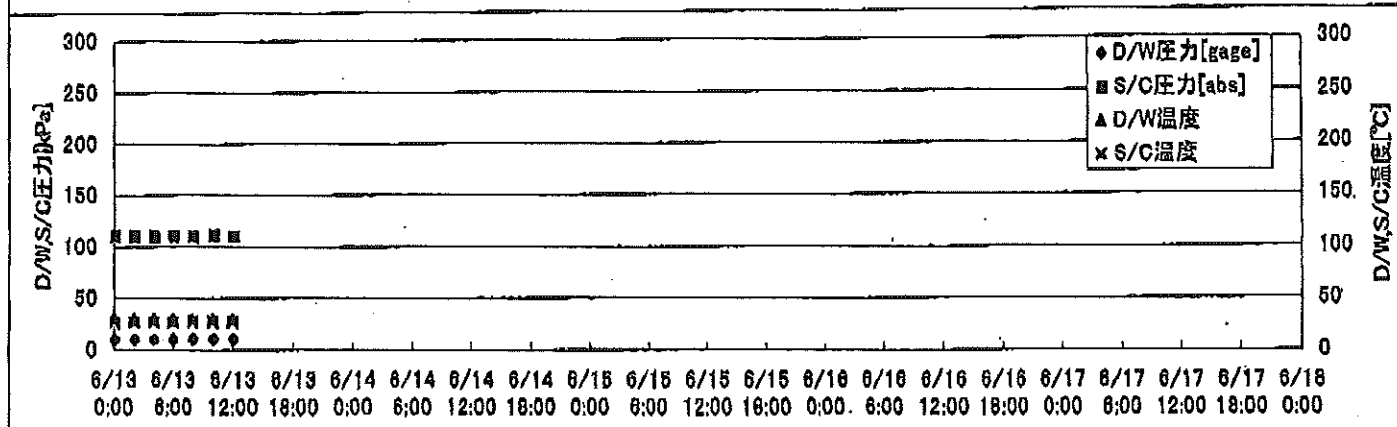
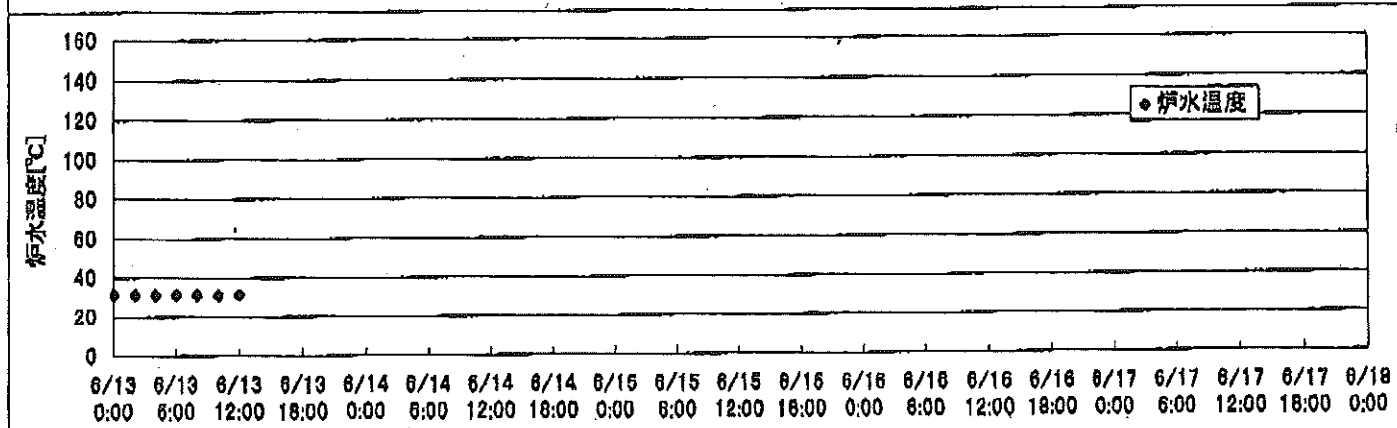
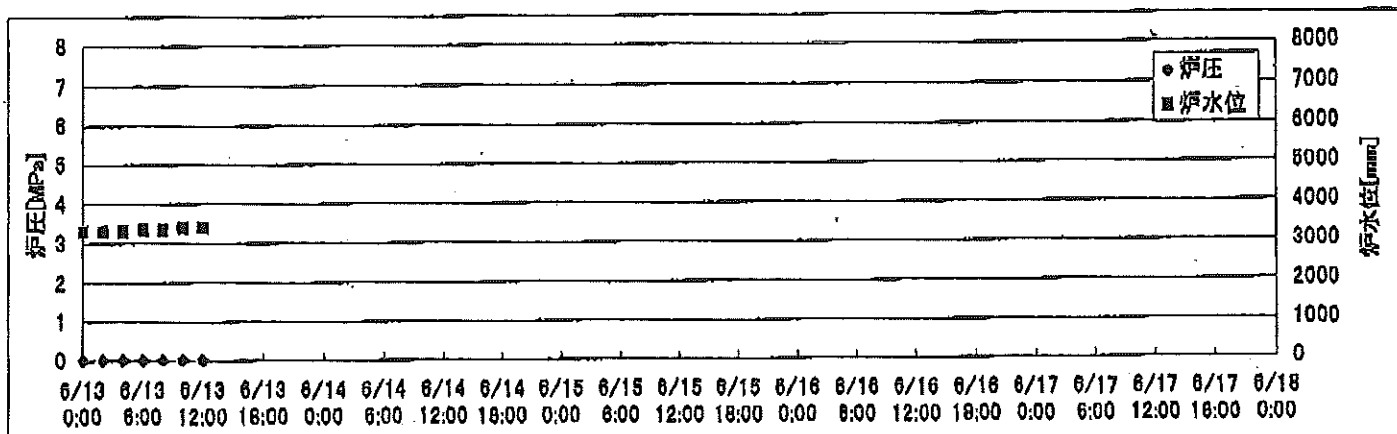
2F-1号機



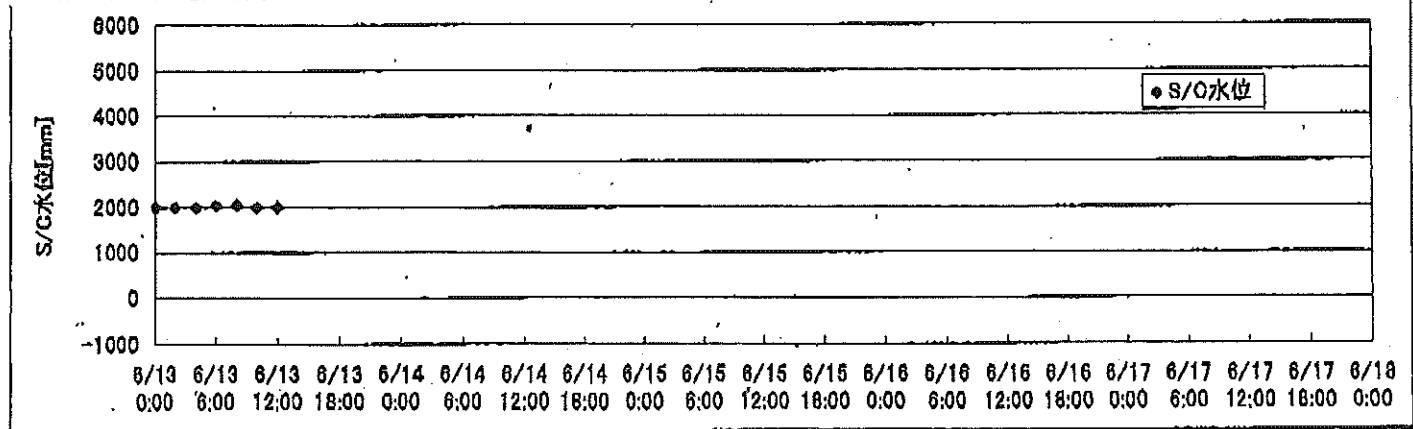
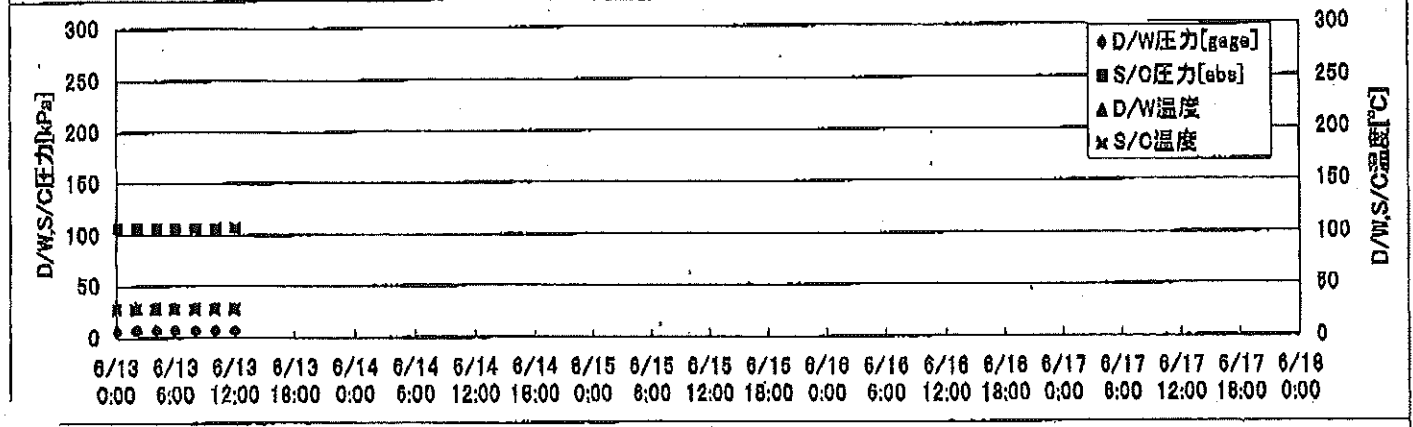
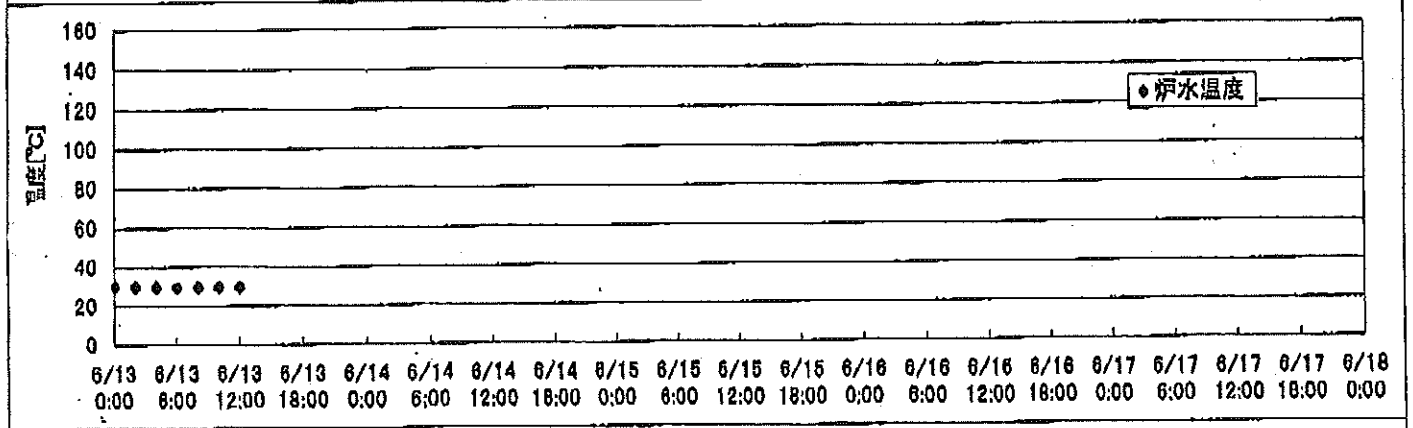
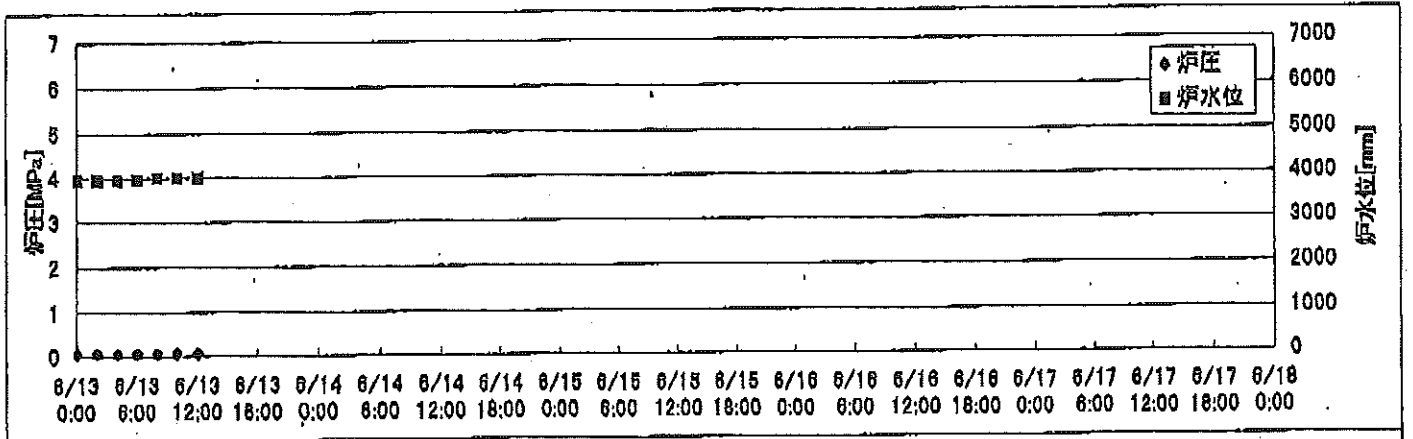
2F-2号機



2F-3号機



2F-4号機



2F-1号機

※燃料頂部(TAF)からの水位=炉水位+4200[mm]

時間	炉圧 [MPa (gage)]	炉水位 [mm] 停止時	炉水温度[°C]	D/W圧力 [kPa(gage)]	D/W温度 [°C]	S/G圧力 [kPa(abs)]	S/G水位 [mm]	S/G温度 [°C]
2011/6/13 0:00	0.05	5700	24.0	4	25.8	105	1960	24
2011/6/13 2:00	0.05	5700	24.0	4	25.9	105	1960	24
2011/6/13 4:00	0.05	5700	24.0	4	26.0	105	1959	24
2011/6/13 6:00	0.05	5700	24.0	4	26.0	105	1959	24
2011/6/13 8:00	0.05	5700	24.1	4	26.0	105	1960	24
2011/6/13 10:00	0.05	5700	24.1	4	25.8	105	1959	24
2011/6/13 12:00	0.05	5700	24.2	4	25.8	105	1959	24
2011/6/13 14:00								
2011/6/13 16:00								
2011/6/13 18:00								
2011/6/13 20:00								
2011/6/13 22:00								
2011/6/14 0:00								
2011/6/14 2:00								
2011/6/14 4:00								
2011/6/14 6:00								
2011/6/14 8:00								
2011/6/14 10:00								
2011/6/14 12:00								
2011/6/14 14:00								
2011/6/14 16:00								
2011/6/14 18:00								
2011/6/14 20:00								
2011/6/14 22:00								
2011/6/15 0:00								
2011/6/15 2:00								
2011/6/15 4:00								
2011/6/15 6:00								
2011/6/15 8:00								
2011/6/15 10:00								
2011/6/15 12:00								
2011/6/15 14:00								
2011/6/15 16:00								
2011/6/15 18:00								
2011/6/15 20:00								
2011/6/15 22:00								
2011/6/16 0:00								

2F-2号機

※燃料頂部(TAF)からの水位=炉水位+4200[mm]

時間	炉圧 [MPa (gage)]	炉水位 [mm] 停止時	炉水温度[°C]	D/W圧力 [kPa(gage)]	D/W温度 [°C]	S/C圧力 [kPa(abs)]	S/C水位 [mm]	S/C温度 [°C]
2011/6/13 0:00	0.04	5650	24.4	7	26.0	107	1200	24
2011/6/13 2:00	0.04	5650	24.4	7	26.0	107	1200	24
2011/6/13 4:00	0.04	5650	24.5	7	26.0	107	1200	24
2011/6/13 6:00	0.03	5650	24.5	7	26.2	107	1200	24
2011/6/13 8:00	0.04	5650	24.6	7	26.2	107	1200	24
2011/6/13 10:00	0.04	5650	24.6	7	26.2	107	1200	24
2011/6/13 12:00	0.04	5650	24.6	7	26.2	107	1200	24
2011/6/13 14:00								
2011/6/13 16:00								
2011/6/13 18:00								
2011/6/13 20:00								
2011/6/13 22:00								
2011/6/14 0:00								
2011/6/14 2:00								
2011/6/14 4:00								
2011/6/14 6:00								
2011/6/14 8:00								
2011/6/14 10:00								
2011/6/14 12:00								
2011/6/14 14:00								
2011/6/14 16:00								
2011/6/14 18:00								
2011/6/14 20:00								
2011/6/14 22:00								
2011/6/15 0:00								
2011/6/15 2:00								
2011/6/15 4:00								
2011/6/15 6:00								
2011/6/15 8:00								
2011/6/15 10:00								
2011/6/15 12:00								
2011/6/15 14:00								
2011/6/15 16:00								
2011/6/15 18:00								
2011/6/15 20:00								
2011/6/15 22:00								
2011/6/16 0:00								

2F-3号機

※燃料頂部(TAF)からの水位=炉水位+4200[mm]

時間	炉圧 [MPa (gage)]	炉水位 [mm] 停止時	炉水温度[°C]	D/W圧力 [kPa(gage)]	D/W温度 [°C]	S/C圧力 [kPa(abs)]	S/C水位 [mm]	S/C温度 [°C]
2011/6/13 0:00	0.02	3300	31.4	10	30.2	110	2100	27
2011/6/13 2:00	0.02	3300	31.4	10	30.2	110	2100	27
2011/6/13 4:00	0.02	3300	31.3	10	30.2	110	2100	27
2011/6/13 6:00	0.02	3350	31.4	10	30.2	110	2100	27
2011/6/13 8:00	0.02	3350	31.4	10	30.2	110	2100	27
2011/6/13 10:00	0.02	3400	31.3	10	30.2	111	2100	27
2011/6/13 12:00	0.02	3400	31.4	10	30.2	110	2100	27
2011/6/13 14:00								
2011/6/13 16:00								
2011/6/13 18:00								
2011/6/13 20:00								
2011/6/13 22:00								
2011/6/14 0:00								
2011/6/14 2:00								
2011/6/14 4:00								
2011/6/14 6:00								
2011/6/14 8:00								
2011/6/14 10:00								
2011/6/14 12:00								
2011/6/14 14:00								
2011/6/14 16:00								
2011/6/14 18:00								
2011/6/14 20:00								
2011/6/14 22:00								
2011/6/15 0:00								
2011/6/15 2:00								
2011/6/15 4:00								
2011/6/15 6:00								
2011/6/15 8:00								
2011/6/15 10:00								
2011/6/15 12:00								
2011/6/15 14:00								
2011/6/15 16:00								
2011/6/15 18:00								
2011/6/15 20:00								
2011/6/15 22:00								
2011/6/16 0:00								

