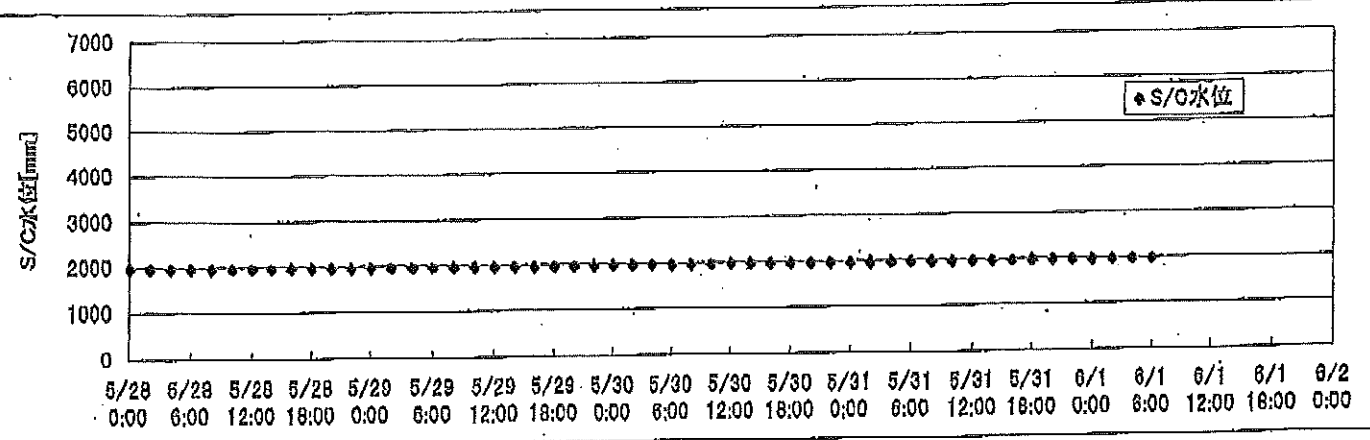
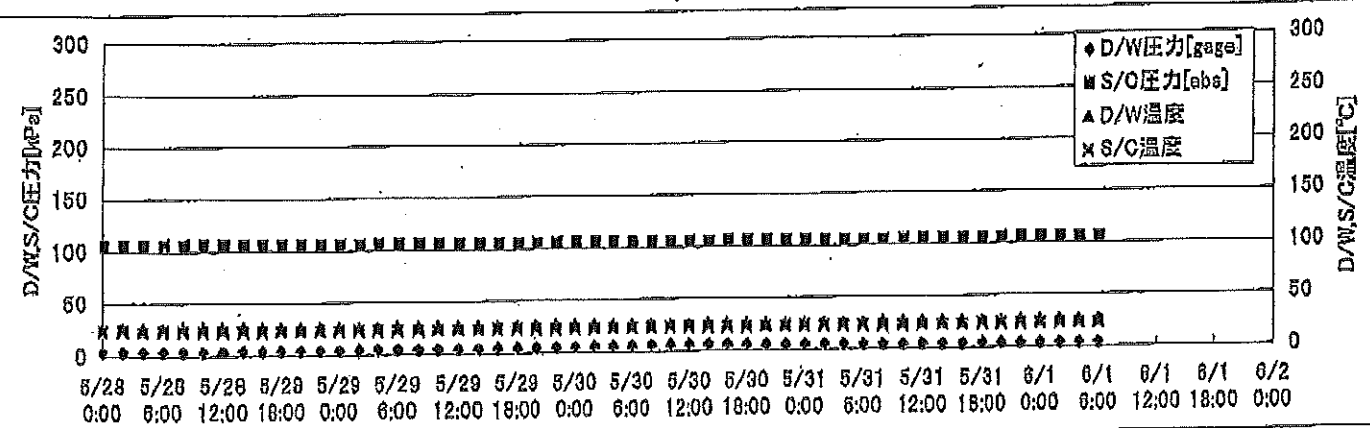
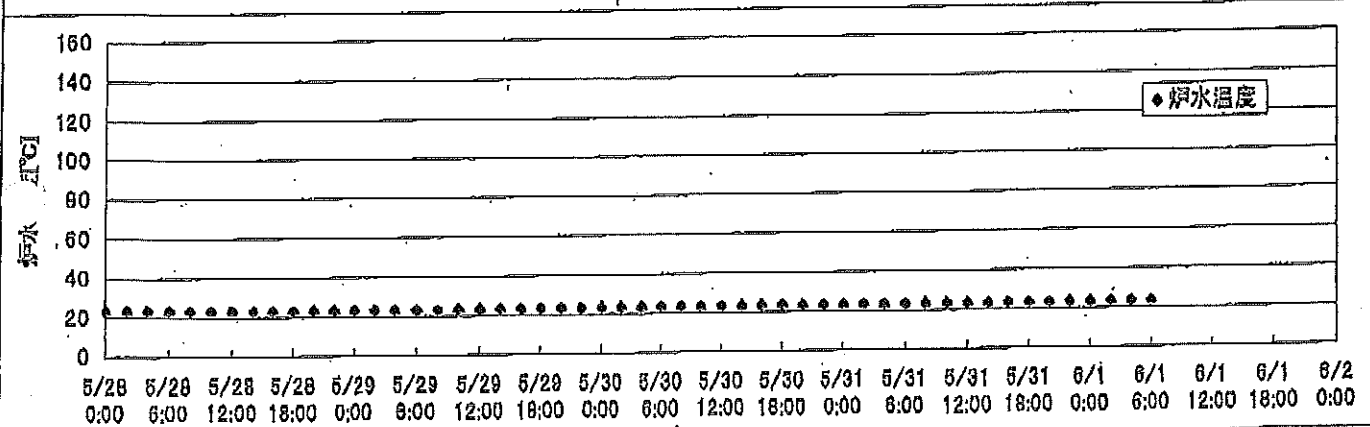
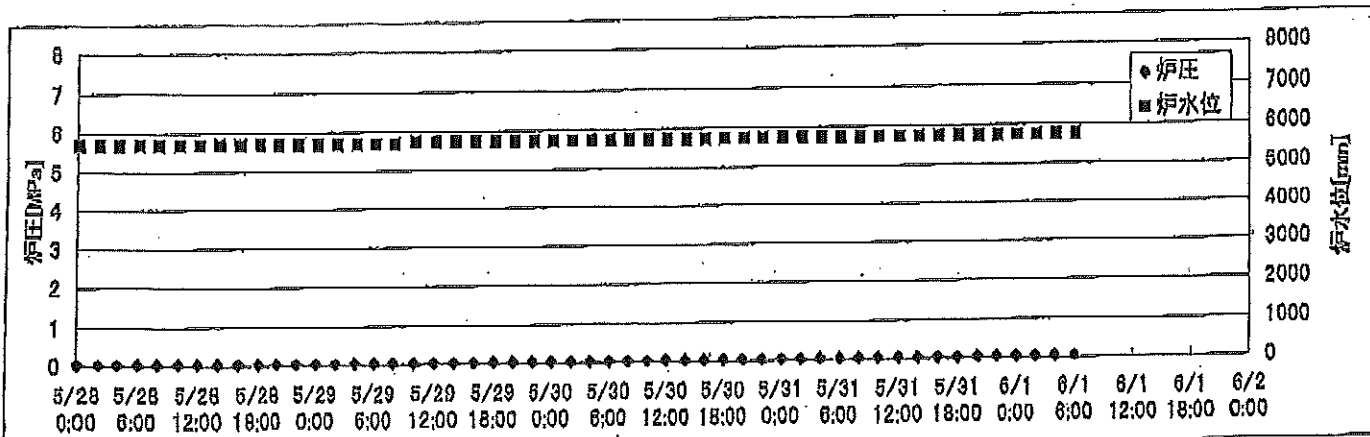
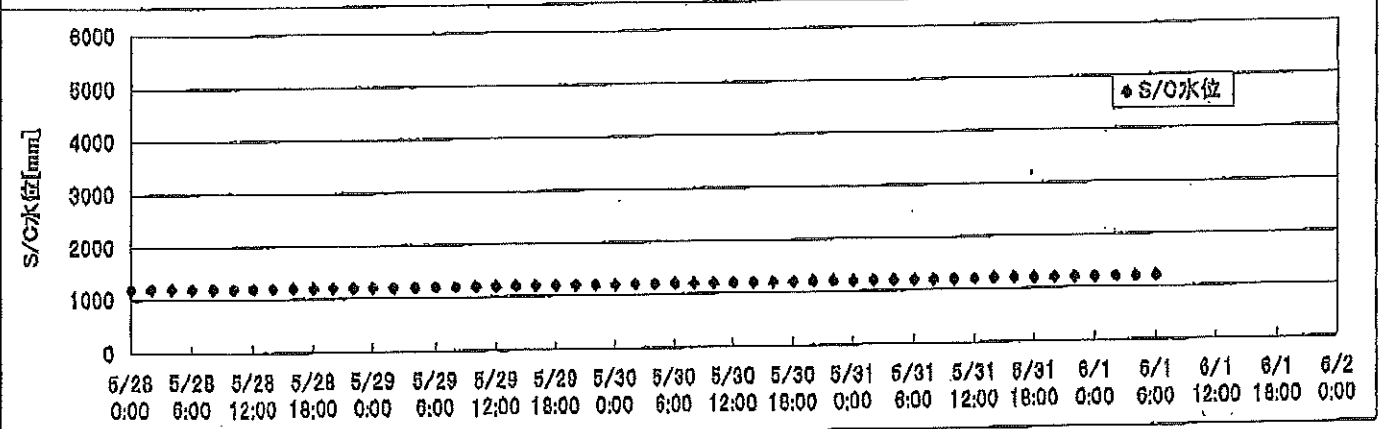
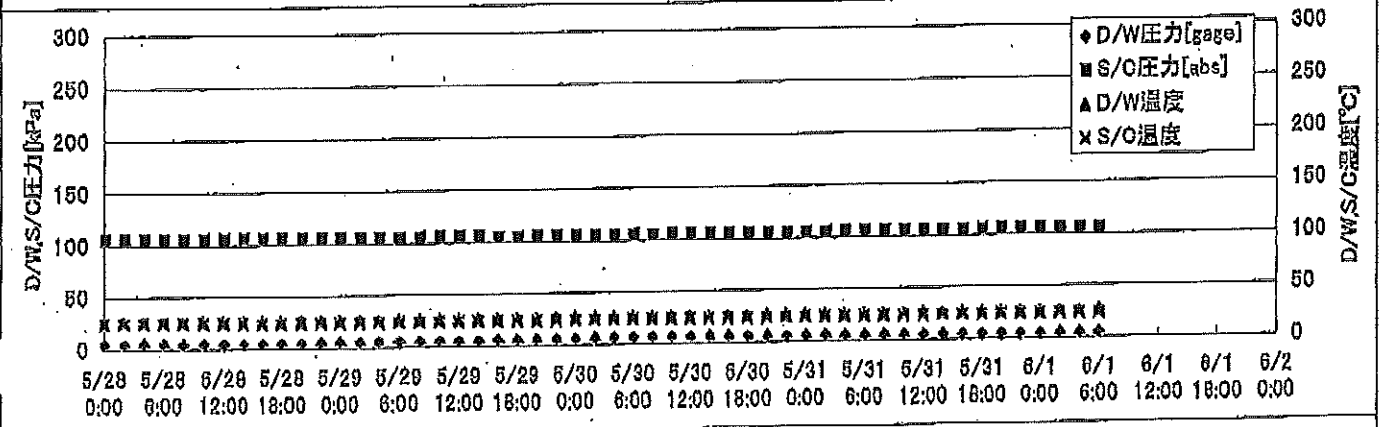
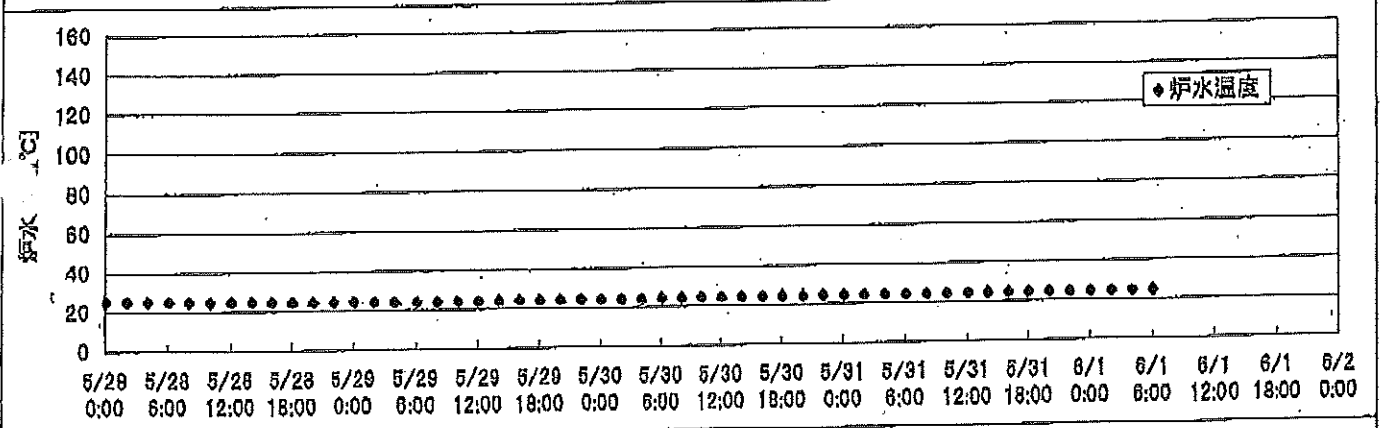
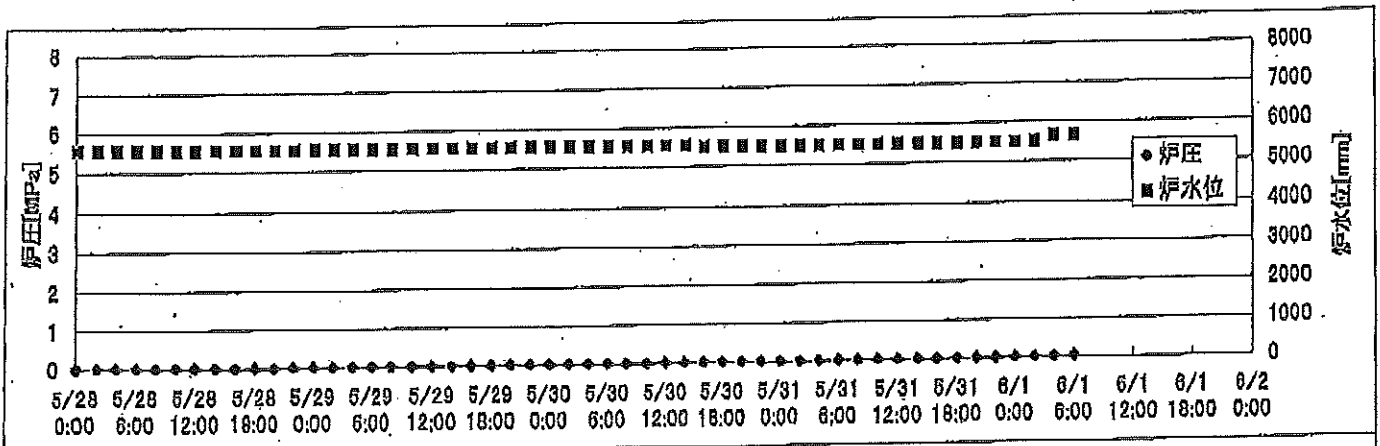


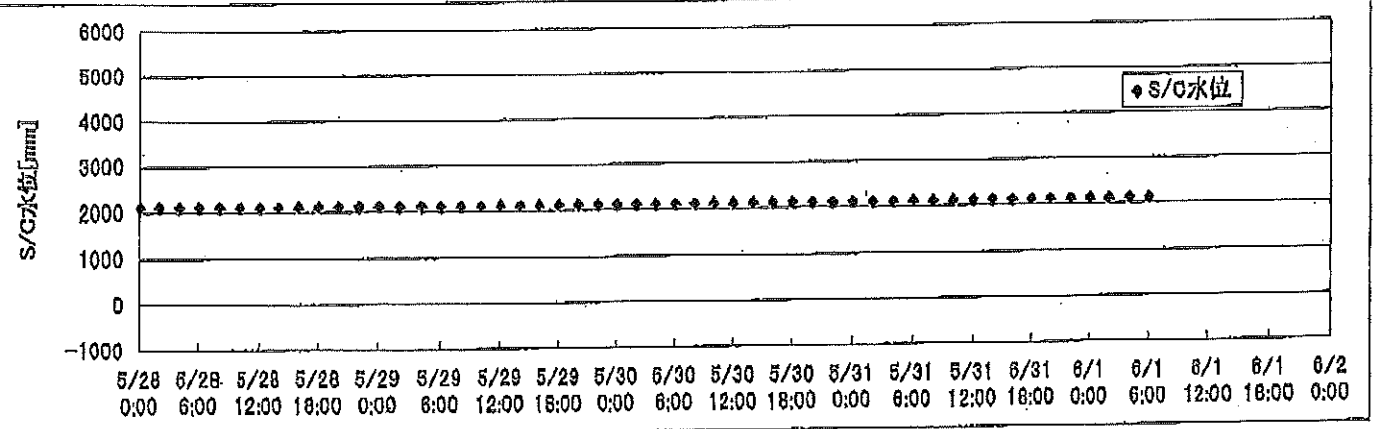
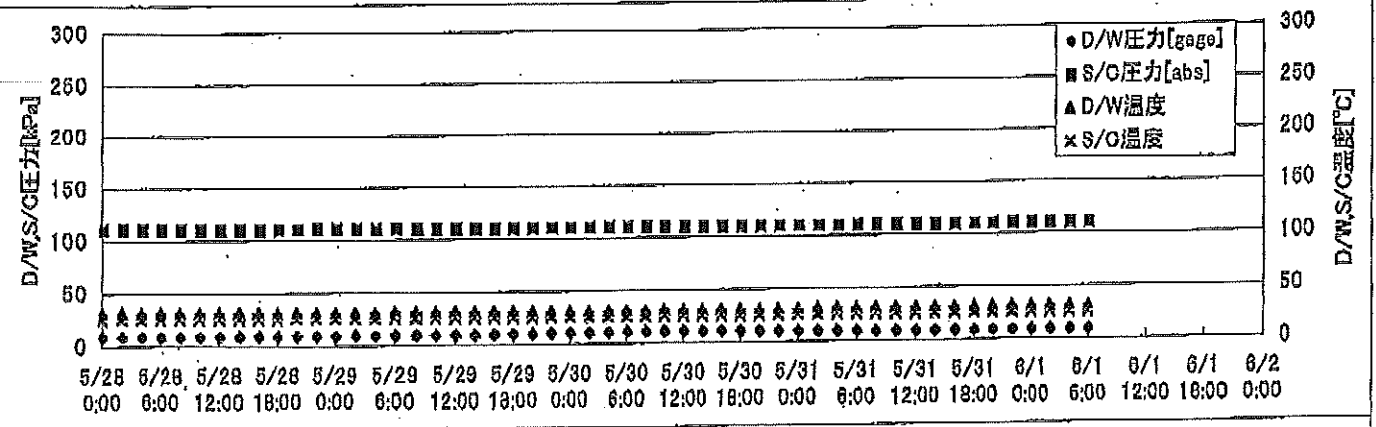
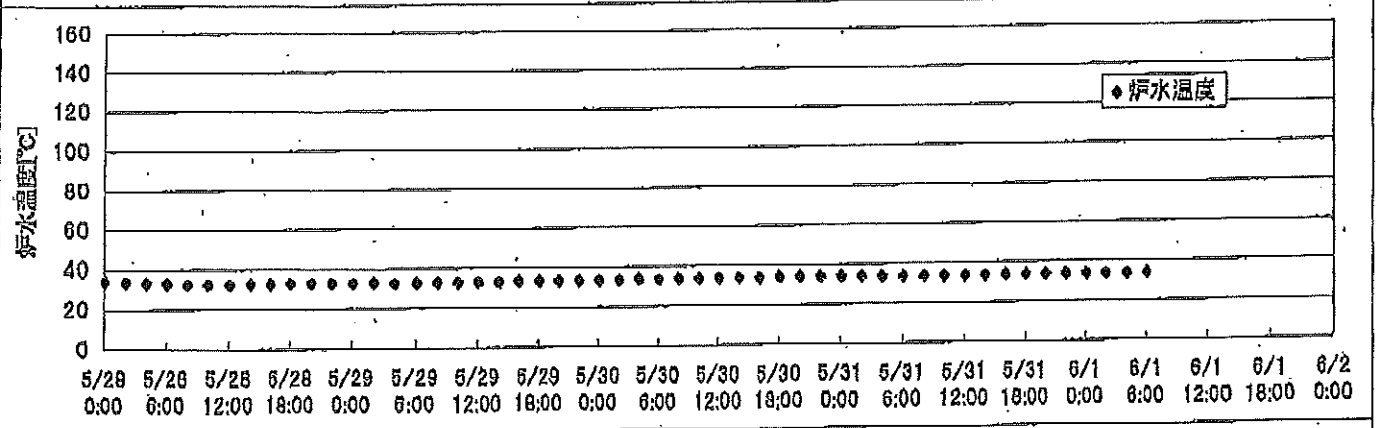
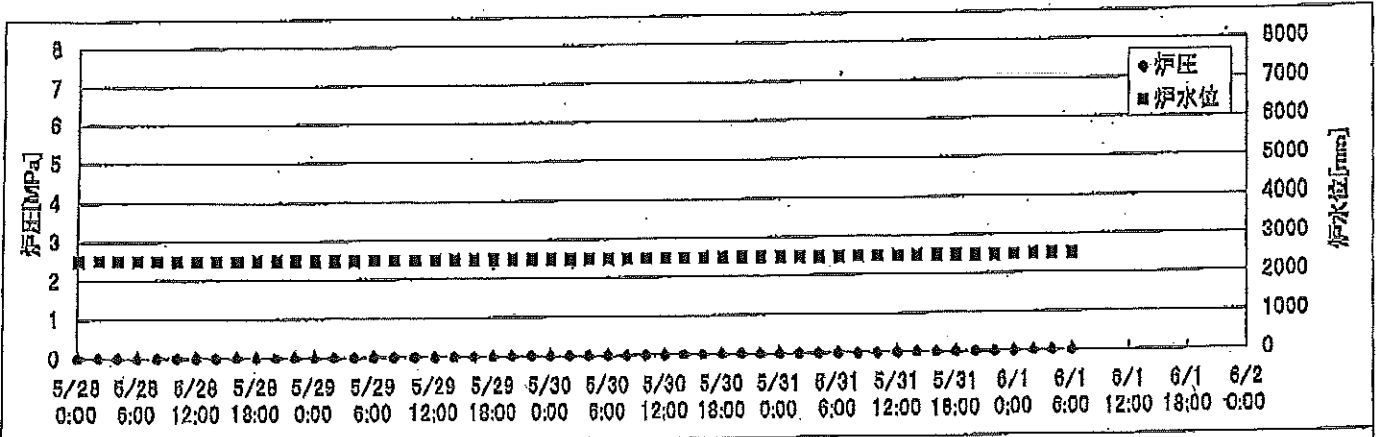
2F-1号機



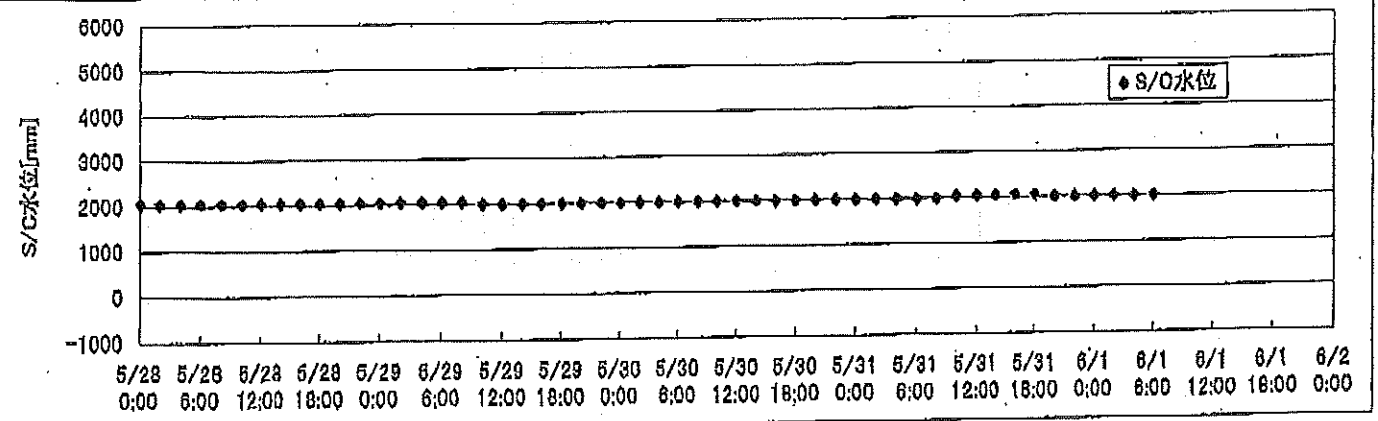
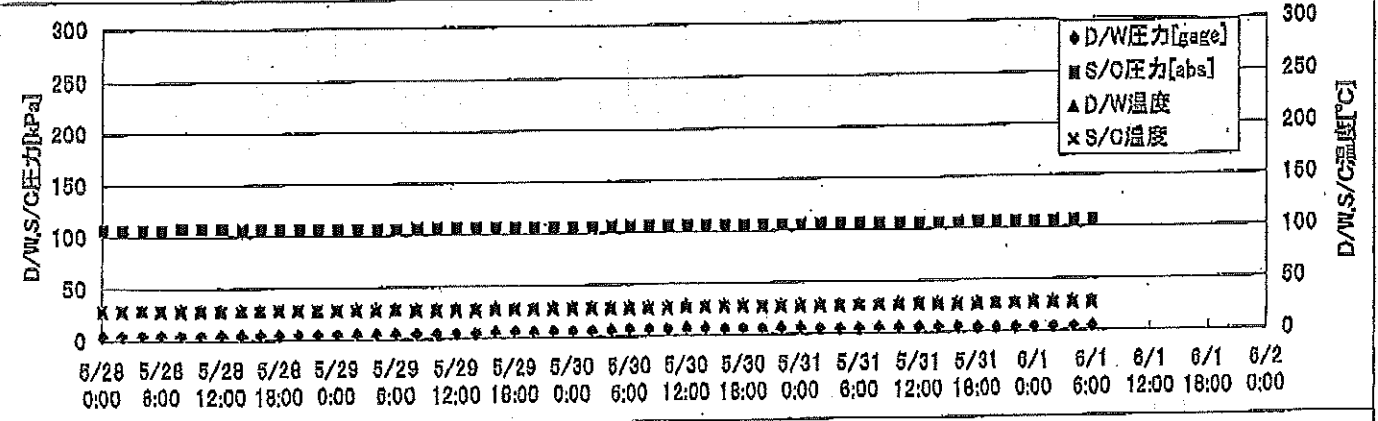
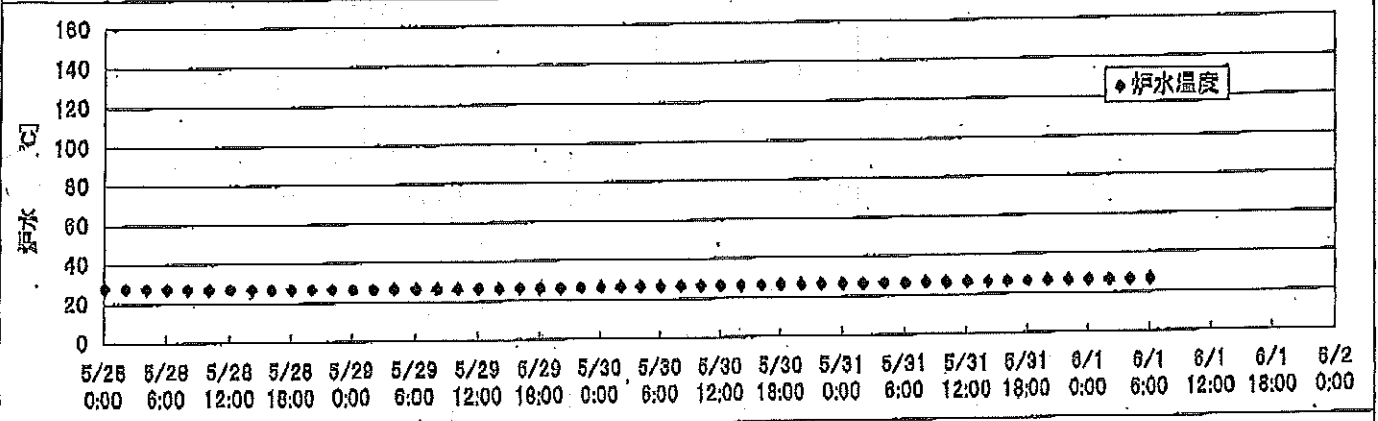
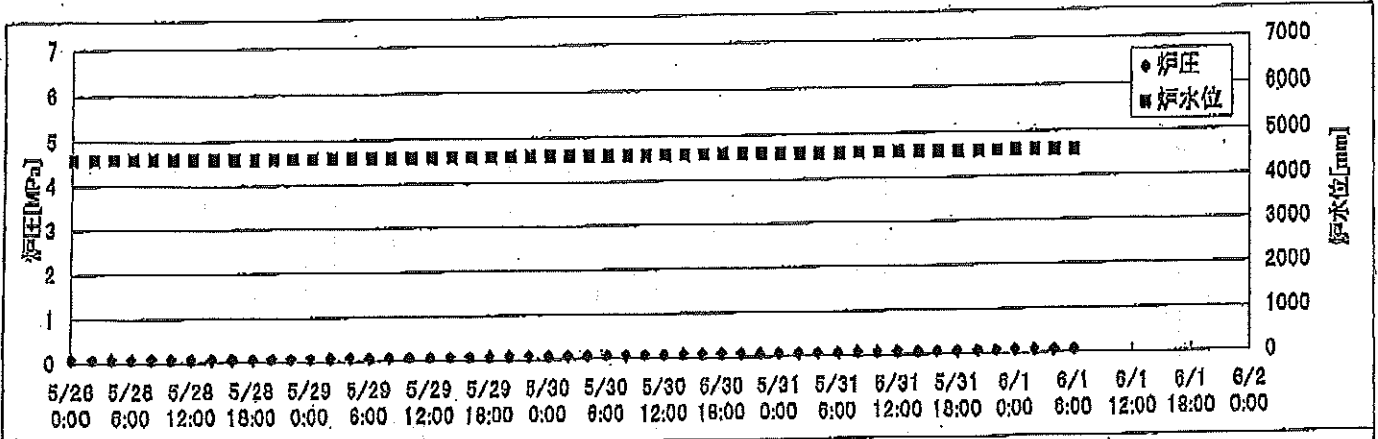
# 2F-2号機



2F-3号機



2F-4号機





# 2F-2号機

※燃料頂部(TAF)からの水位=炉水位+4200[mm]

時間	炉圧 [MPa (gage)]	炉水位 [mm] 停止時	炉水温度[°C] 給水/スル温度	D/W圧力 [kPa(gage)]	D/W温度 [°C]	S/C圧力 [kPa(abs)]	S/C水位 [mm]	S/C温度 [°C]
2011/5/29 12:00	0.02	5550	24.1	5	26.2	106	1200	24
2011/5/29 14:00	0.02	5550	24.1	5	26.2	106	1200	24
2011/5/29 16:00	0.02	5550	24.1	5	26.3	105	1200	24
2011/5/29 18:00	0.02	5550	24.1	5	26.3	105	1200	24
2011/5/29 20:00	0.02	5550	24.2	6	26.0	106	1200	24
2011/5/29 22:00	0.02	5550	24.2	6	26.3	106	1200	24
2011/5/30 0:00	0.02	5550	24.2	6	26.3	105	1200	24
2011/5/30 2:00	0.02	5550	24.2	6	26.3	106	1200	24
2011/5/30 4:00	0.02	5550	24.2	6	26.2	106	1200	24
2011/5/30 6:00	0.02	5550	24.3	7	26.2	106	1200	24
2011/5/30 8:00	0.02	5550	24.3	7	26.3	105	1200	24
2011/5/30 10:00	0.02	5550	24.4	7	26.3	106	1200	24
2011/5/30 12:00	0.02	5550	24.4	7	26.2	106	1200	24
2011/5/30 14:00	0.02	5550	24.4	7	26.2	106	1200	24
2011/5/30 16:00	0.02	5500	24.4	6	26.3	106	1200	24
2011/5/30 18:00	0.02	5500	24.4	6	26.3	106	1200	24
2011/5/30 20:00	0.02	5500	24.5	6	26.2	106	1200	24
2011/5/30 22:00	0.02	5500	24.5	6	26.2	106	1200	24
2011/5/31 0:00	0.02	5500	24.5	5	26.2	106	1200	24
2011/5/31 2:00	0.02	5500	24.5	5	26.2	106	1200	24
2011/5/31 4:00	0.02	5500	24.5	5	26.2	106	1200	24
2011/5/31 6:00	0.02	5500	24.4	5	26.2	106	1200	24
2011/5/31 8:00	0.02	5500	24.4	5	26.2	106	1200	24
2011/5/31 10:00	0.02	5500	24.4	5	26.2	106	1200	24
2011/5/31 12:00	0.02	5500	24.4	5	26.3	106	1200	24
2011/5/31 14:00	0.02	5500	24.4	5	26.2	106	1200	24
2011/5/31 16:00	0.02	5500	24.4	5	26.2	106	1200	24
2011/5/31 18:00	0.02	5500	24.4	5	26.0	106	1200	24
2011/5/31 20:00	0.02	5500	24.4	4	26.0	106	1200	24
2011/5/31 22:00	0.02	5500	24.4	4	26.2	106	1200	24
2011/6/1 0:00	0.02	5500	24.4	4	26.2	106	1200	24
2011/6/1 2:00	0.02	5500	24.4	4	26.3	106	1200	24
2011/6/1 4:00	0.02	5650	24.4	4	26.3	106	1200	24
2011/6/1 6:00	0.03	5650	24.4	4	26.3	106	1200	24
2011/6/1 8:00								
2011/6/1 10:00								
2011/6/1 12:00								

6/1 2:20 原子炉水位上昇操作を実施

2011年5月29日 0時00分 2F-2号機

# 2F-3号機

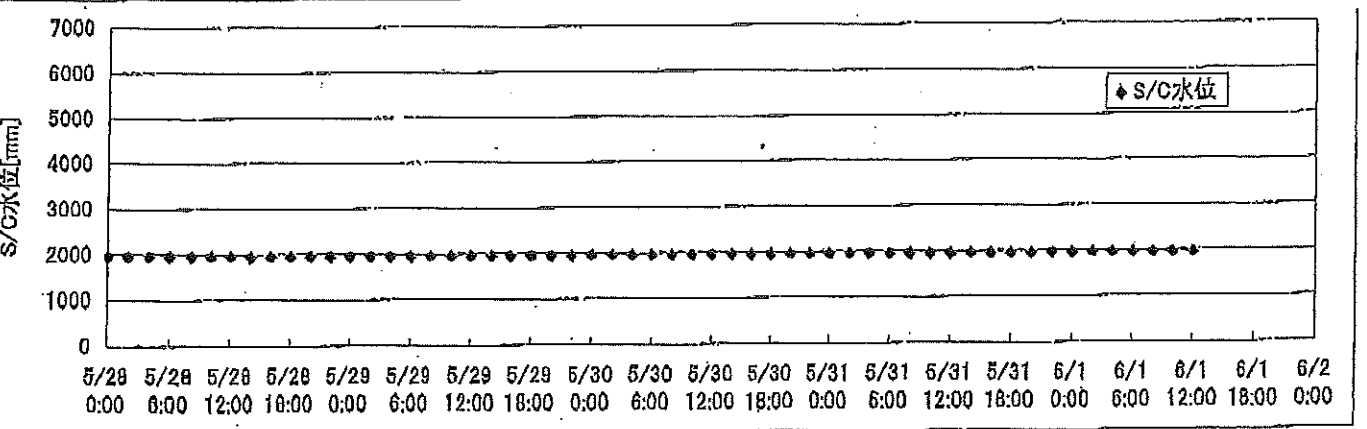
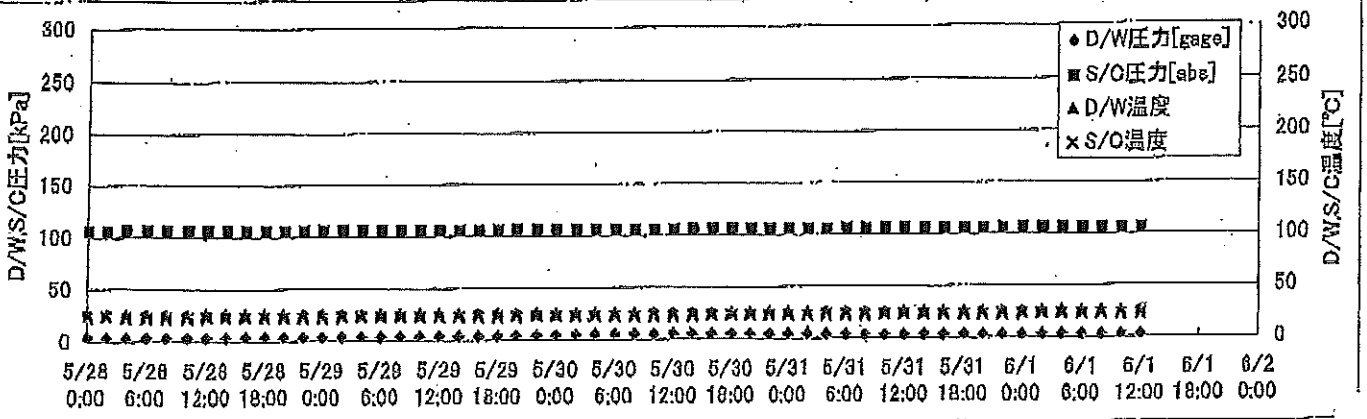
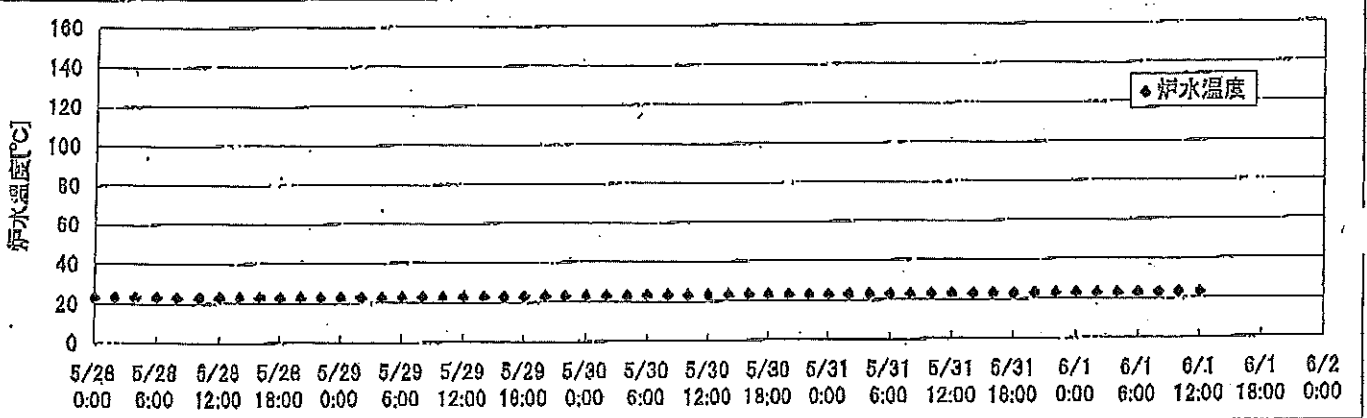
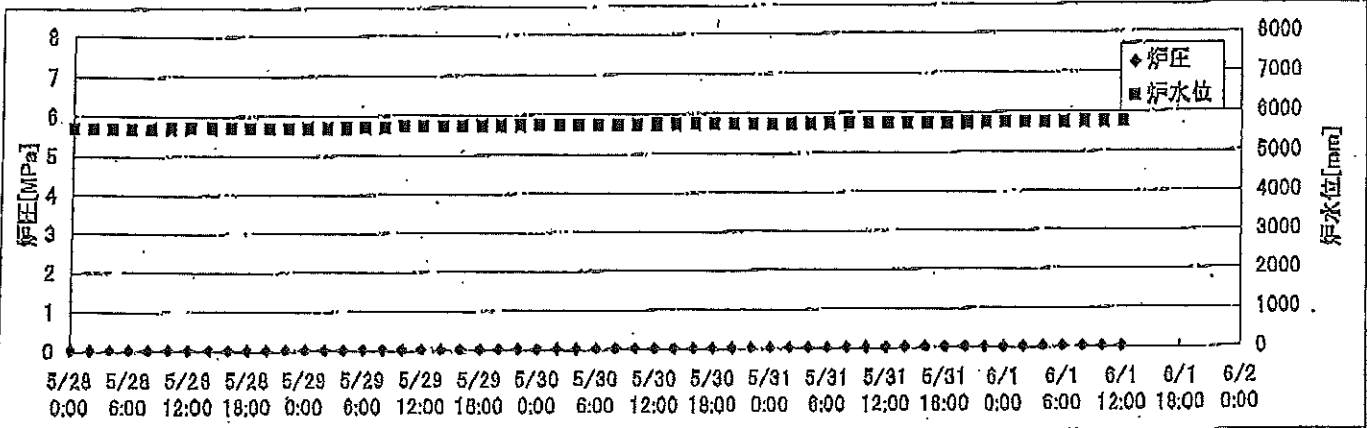
※燃料頂部(TAF)からの水位=炉水位+4200[mm]

時間	炉圧 [MPa (gage)]	炉水位 [mm] アツブセット	炉水温度[°C] 給水/スル温度	D/W圧力 [kPa(gage)]	D/W温度 [°C]	S/C圧力 [kPa(abs)]	S/C水位 [mm]	S/C温度 [°C]
2011/5/29 12:00	0.00	2488	33.2	10	31.4	110	2100	26
2011/5/29 14:00	0.00	2488	33.3	10	31.4	110	2100	26
2011/5/29 16:00	0.00	2488	33.4	10	31.4	110	2100	26
2011/5/29 18:00	0.00	2489	33.4	10	31.5	110	2100	26
2011/5/29 20:00	0.00	2489	33.5	10	31.4	110	2100	26
2011/5/29 22:00	0.00	2489	33.5	10	31.5	110	2100	26
2011/5/30 0:00	0.00	2489	33.6	10	31.5	110	2100	26
2011/5/30 2:00	0.00	2490	33.6	11	31.5	110	2100	26
2011/5/30 4:00	0.00	2490	33.7	11	31.5	110	2100	26
2011/5/30 6:00	0.00	2490	33.7	11	31.5	110	2100	26
2011/5/30 8:00	0.00	2490	33.8	11	31.5	110	2100	26
2011/5/30 10:00	0.00	2490	33.9	11	31.5	110	2100	26
2011/5/30 12:00	0.00	2492	33.9	11	31.5	110	2100	26
2011/5/30 14:00	0.00	2492	34.0	11	31.4	110	2100	26
2011/5/30 16:00	0.00	2492	34.0	11	31.5	110	2100	26
2011/5/30 18:00	0.00	2492	34.1	11	31.5	110	2100	26
2011/5/30 20:00	0.00	2493	34.1	10	31.5	110	2100	26
2011/5/30 22:00	0.00	2493	34.1	10	31.5	110	2100	26
2011/5/31 0:00	0.00	2493	34.1	10	31.5	110	2100	26
2011/5/31 2:00	0.00	2496	34.0	10	31.7	110	2100	26
2011/5/31 4:00	0.00	2495	34.0	10	31.7	110	2100	26
2011/5/31 6:00	0.00	2495	33.9	10	31.7	110	2100	26
2011/5/31 8:00	0.00	2495	33.9	9	31.7	110	2100	26
2011/5/31 10:00	0.00	2495	33.9	9	31.7	110	2100	26
2011/5/31 12:00	0.00	2495	33.8	9	31.7	110	2100	26
2011/5/31 14:00	0.00	2495	33.8	9	31.6	110	2100	26
2011/5/31 16:00	0.00	2495	33.7	9	31.5	110	2100	26
2011/5/31 18:00	0.00	2495	33.8	9	31.7	110	2100	26
2011/5/31 20:00	0.00	2495	33.8	9	31.6	110	2100	26
2011/5/31 22:00	0.00	2495	33.8	9	31.5	110	2100	26
2011/6/1 0:00	0.00	2495	33.9	9	31.5	110	2100	26
2011/6/1 2:00	0.00	2495	33.8	9	31.6	110	2100	26
2011/6/1 4:00	0.00	2495	33.8	9	31.6	110	2100	26
2011/6/1 6:00	0.00	2495	33.8	9	31.6	110	2100	26
2011/6/1 8:00								
2011/6/1 10:00								
2011/6/1 12:00								

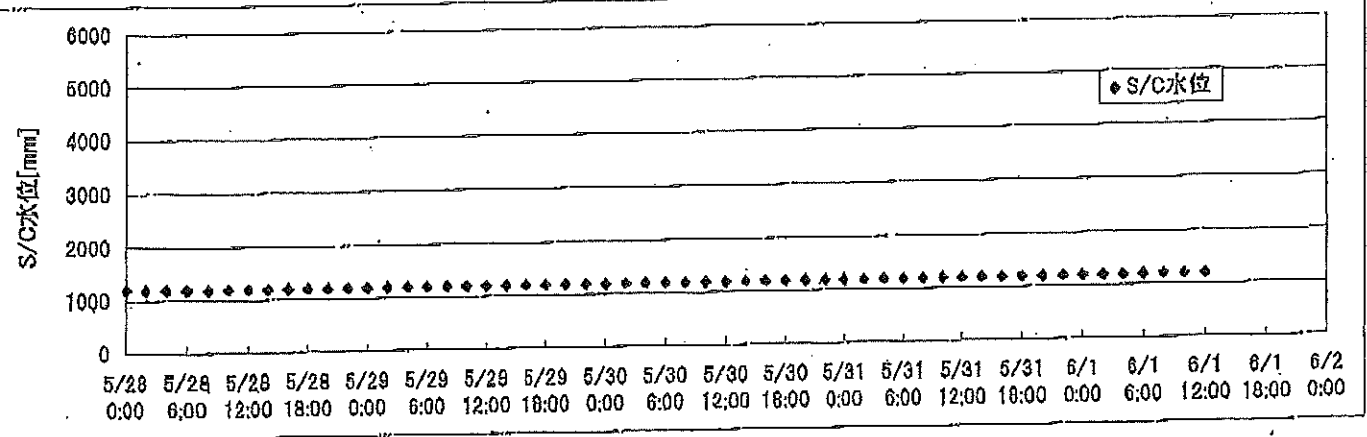
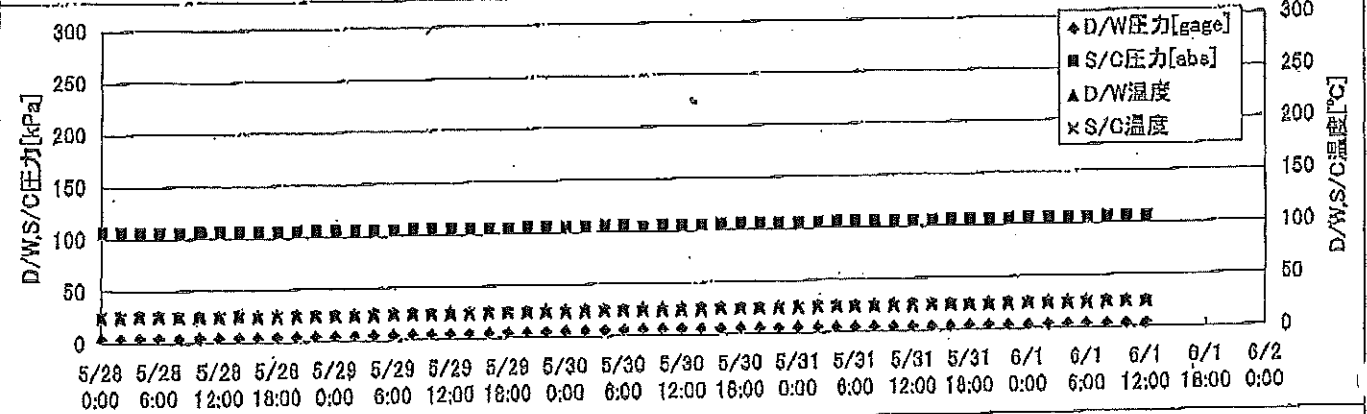
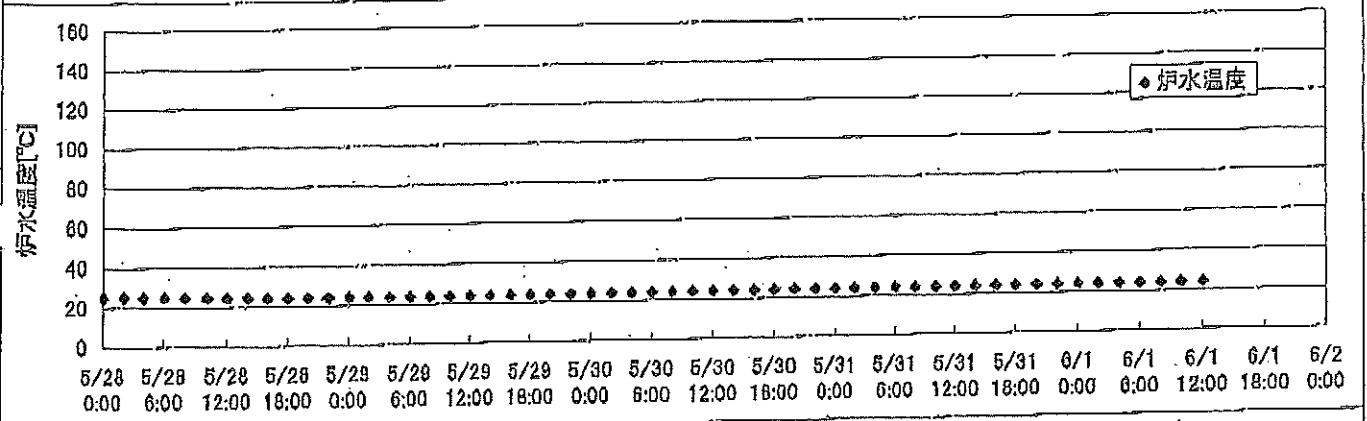
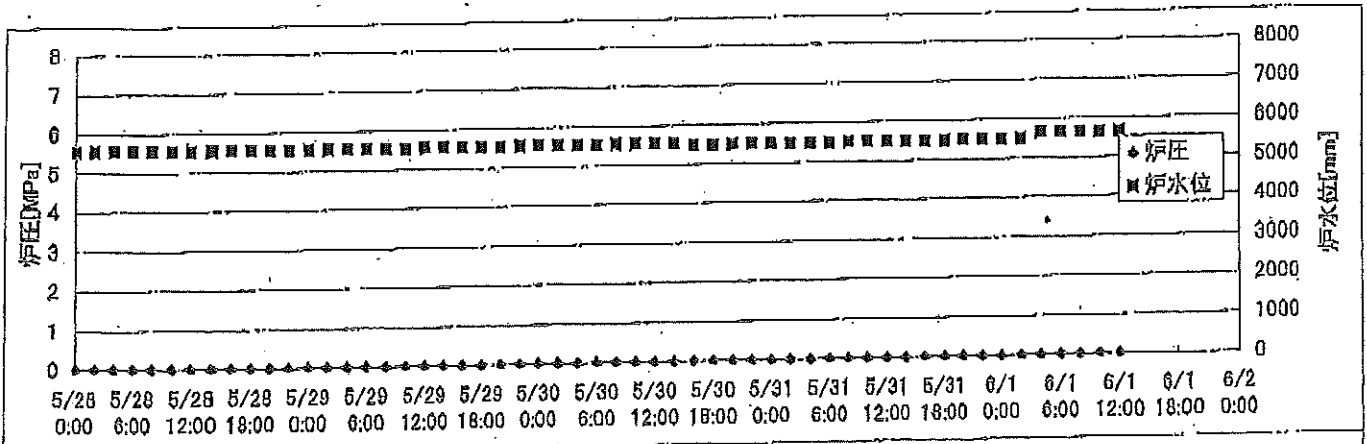




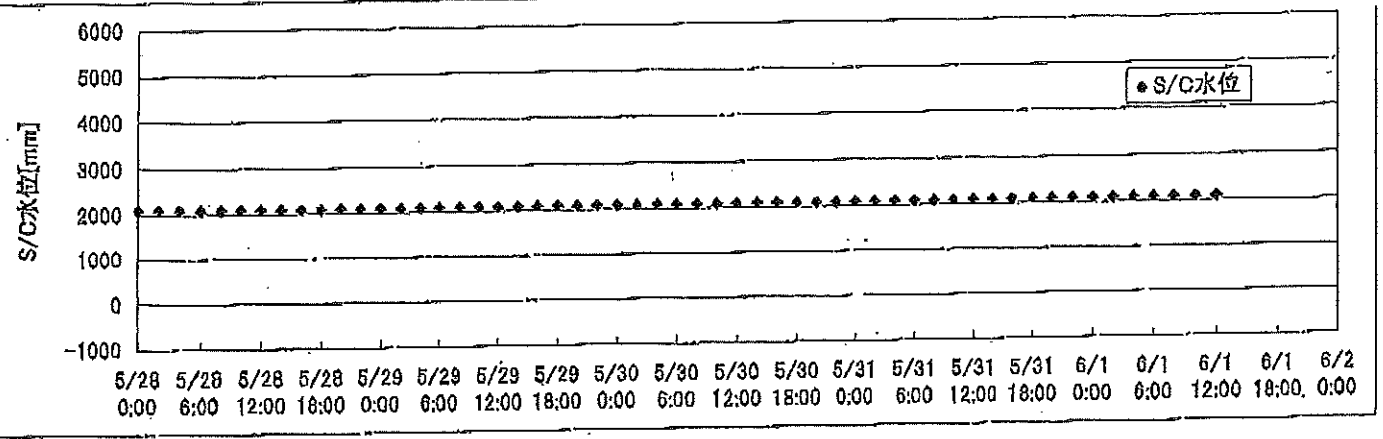
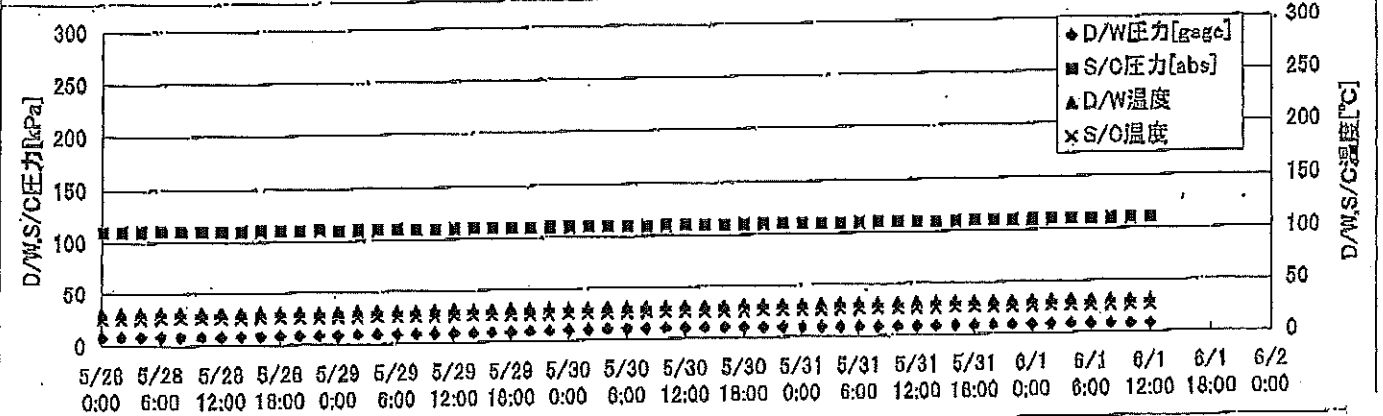
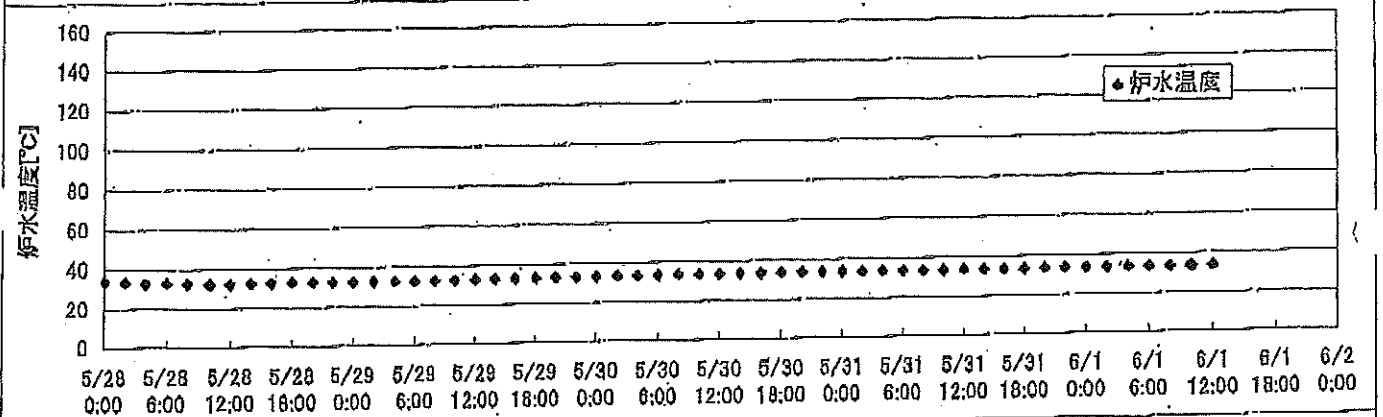
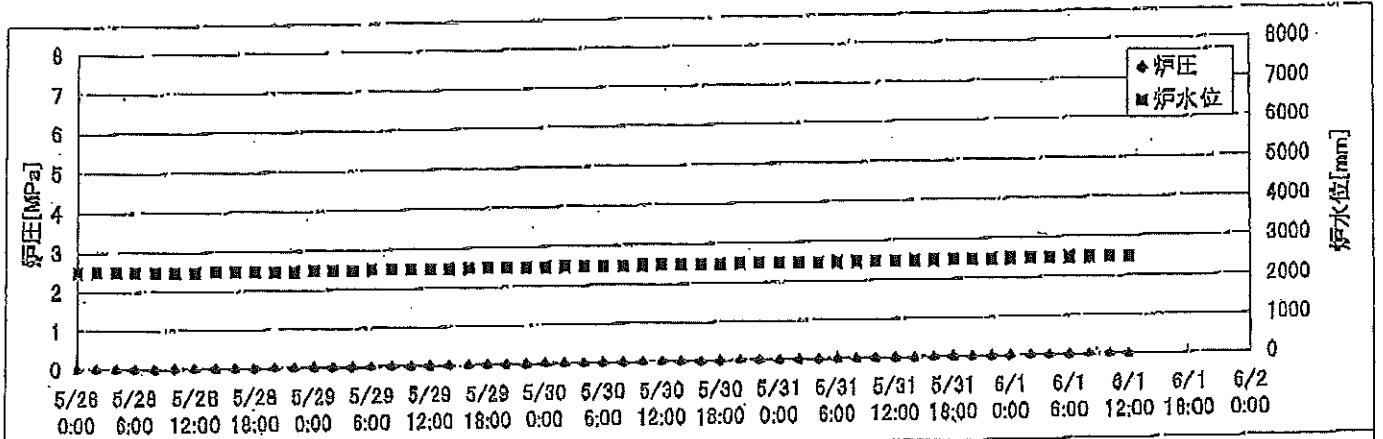
### 2F-1号機



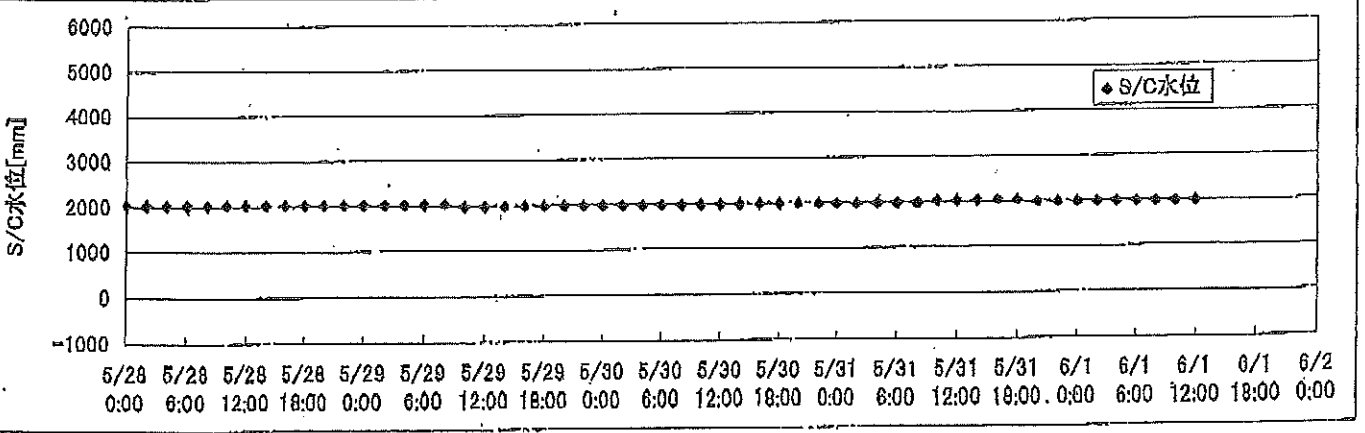
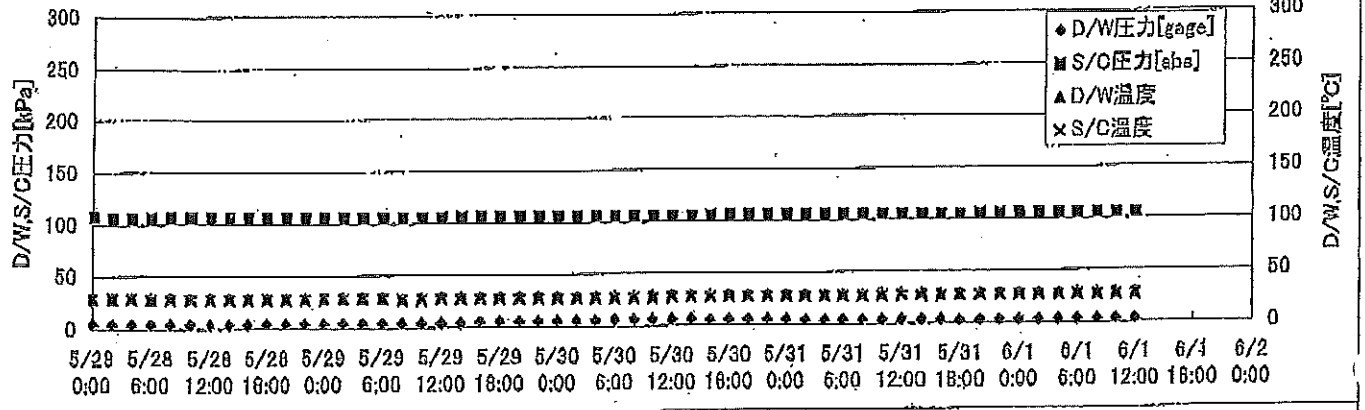
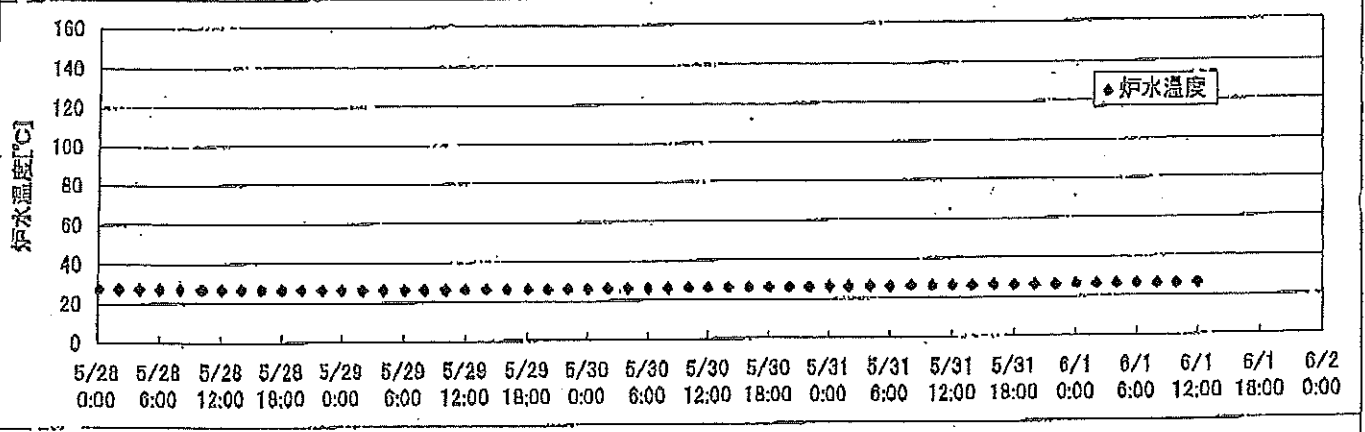
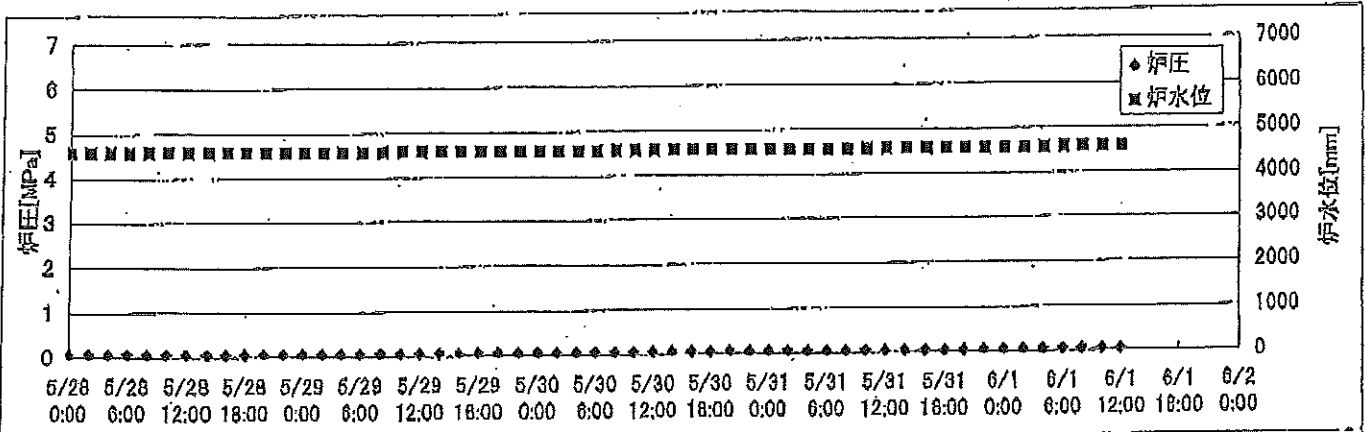
# 2F-2号機



### 2F-3号機



### 2F-4号機



## 2F-1号機

※燃料頂部(TAF)からの水位=炉水位+4200[mm]

時間	炉圧 [MPa (gage)]	炉水位 [mm] 停止時	炉水温度[°C] 給水/スル温度	D/W圧力 [kPa(gage)]	D/W温度 [°C]	S/C圧力 [kPa(abs)]	S/C水位 [mm]	S/C温度 [°C]
2011/5/29 12:00	0.05	5750	23.2	4	25.9	106	1957	23
2011/5/29 14:00	0.05	5750	23.2	5	25.8	106	1957	23
2011/5/29 16:00	0.05	5750	23.2	5	25.9	106	1957	23
2011/5/29 18:00	0.05	5750	23.3	5	25.9	106	1956	23
2011/5/29 20:00	0.05	5750	23.3	5	25.9	106	1956	23
2011/5/29 22:00	0.05	5750	23.4	5	25.7	106	1955	23
2011/5/30 0:00	0.05	5750	23.4	5	25.8	106	1963	23
2011/5/30 2:00	0.05	5750	23.4	6	25.9	106	1964	23
2011/5/30 4:00	0.05	5750	23.4	6	25.8	106	1966	23
2011/5/30 6:00	0.05	5750	23.5	6	25.8	106	1966	23
2011/5/30 8:00	0.05	5750	23.5	6	25.8	106	1964	23
2011/5/30 10:00	0.05	5750	23.5	6	25.8	106	1964	23
2011/5/30 12:00	0.05	5750	23.5	6	25.8	106	1964	23
2011/5/30 14:00	0.05	5750	23.5	6	25.8	106	1963	23
2011/5/30 16:00	0.05	5750	23.5	6	25.8	106	1964	23
2011/5/30 18:00	0.05	5750	23.5	6	25.8	106	1963	23
2011/5/30 20:00	0.05	5750	23.5	5	25.8	106	1962	23
2011/5/30 22:00	0.05	5750	23.5	5	25.8	106	1962	23
2011/5/31 0:00	0.05	5750	23.5	5	25.8	106	1961	23
2011/5/31 2:00	0.05	5750	23.5	5	25.8	106	1962	23
2011/5/31 4:00	0.05	5750	23.5	5	25.8	106	1961	23
2011/5/31 6:00	0.05	5750	23.4	4	25.8	106	1960	23
2011/5/31 8:00	0.05	5750	23.4	4	25.8	106	1961	23
2011/5/31 10:00	0.05	5750	23.4	4	25.8	106	1963	23
2011/5/31 12:00	0.05	5750	23.4	4	25.8	106	1963	23
2011/5/31 14:00	0.05	5750	23.4	4	25.8	106	1963	23
2011/5/31 16:00	0.05	5750	23.4	4	25.8	106	1963	23
2011/5/31 18:00	0.05	5750	23.4	4	25.8	106	1962	23
2011/5/31 20:00	0.05	5750	23.4	4	25.8	106	1963	23
2011/5/31 22:00	0.05	5750	23.4	4	25.8	106	1963	23
2011/6/1 0:00	0.05	5750	23.4	4	25.8	106	1963	23
2011/6/1 2:00	0.05	5750	23.4	4	25.8	106	1963	23
2011/6/1 4:00	0.05	5750	23.4	4	25.8	106	1962	23
2011/6/1 6:00	0.05	5750	23.4	4	25.8	106	1962	23
2011/6/1 8:00	0.05	5750	23.4	4	25.8	106	1962	23
2011/6/1 10:00	0.05	5750	23.4	3	25.8	106	1962	23
2011/6/1 12:00	0.05	5750	23.4	3	25.8	106	1961	23

## 2F-2号機

※燃料頂部(TAF)からの水位=炉水位+4200[mm]

時間	炉圧 [MPa (gage)]	炉水位 [mm] 停止時	炉水温度[°C] 給水/スル温度	D/W圧力 [kPa(gage)]	D/W温度 [°C]	S/C圧力 [kPa(abs)]	S/C水位 [mm]	S/C温度 [°C]
2011/5/29 12:00	0.02	5550	24.1	5	26.2	106	1200	24
2011/5/29 14:00	0.02	5550	24.1	5	26.2	106	1200	24
2011/5/29 16:00	0.02	5550	24.1	5	26.3	105	1200	24
2011/5/29 18:00	0.02	5550	24.1	5	26.3	105	1200	24
2011/5/29 20:00	0.02	5550	24.2	6	26.0	106	1200	24
2011/5/29 22:00	0.02	5550	24.2	6	26.3	106	1200	24
2011/5/30 0:00	0.02	5550	24.2	6	26.3	105	1200	24
2011/5/30 2:00	0.02	5550	24.2	6	26.3	106	1200	24
2011/5/30 4:00	0.02	5550	24.2	6	26.2	106	1200	24
2011/5/30 6:00	0.02	5550	24.3	7	26.2	106	1200	24
2011/5/30 8:00	0.02	5550	24.3	7	26.3	105	1200	24
2011/5/30 10:00	0.02	5550	24.4	7	26.3	106	1200	24
2011/5/30 12:00	0.02	5550	24.4	7	26.2	106	1200	24
2011/5/30 14:00	0.02	5550	24.4	7	26.2	106	1200	24
2011/5/30 16:00	0.02	5500	24.4	6	26.3	106	1200	24
2011/5/30 18:00	0.02	5500	24.4	6	26.3	106	1200	24
2011/5/30 20:00	0.02	5500	24.5	6	26.2	106	1200	24
2011/5/30 22:00	0.02	5500	24.5	6	26.2	106	1200	24
2011/5/31 0:00	0.02	5500	24.5	5	26.2	106	1200	24
2011/5/31 2:00	0.02	5500	24.5	5	26.2	106	1200	24
2011/5/31 4:00	0.02	5500	24.5	5	26.2	106	1200	24
2011/5/31 6:00	0.02	5500	24.4	5	26.2	106	1200	24
2011/5/31 8:00	0.02	5500	24.4	5	26.2	106	1200	24
2011/5/31 10:00	0.02	5500	24.4	5	26.2	106	1200	24
2011/5/31 12:00	0.02	5500	24.4	5	26.3	106	1200	24
2011/5/31 14:00	0.02	5500	24.4	5	26.2	106	1200	24
2011/5/31 16:00	0.02	5500	24.4	5	26.2	106	1200	24
2011/5/31 18:00	0.02	5500	24.4	5	26.0	106	1200	24
2011/5/31 20:00	0.02	5500	24.4	4	26.0	106	1200	24
2011/5/31 22:00	0.02	5500	24.4	4	26.2	106	1200	24
2011/6/1 0:00	0.02	5500	24.4	4	26.2	106	1200	24
2011/6/1 2:00	0.02	5500	24.4	4	26.3	106	1200	24
2011/6/1 4:00	0.02	5650	24.4	4	26.3	106	1200	24
2011/6/1 6:00	0.03	5650	24.4	4	26.3	106	1200	24
2011/6/1 8:00	0.03	5650	24.4	4	26.3	106	1200	24
2011/6/1 10:00	0.03	5650	24.4	4	26.2	106	1200	24
2011/6/1 12:00	0.03	5650	24.4	4	26.2	106	1200	24

## 2F-3号機

※燃料頂部(TAF)からの水位=炉水位+4200[mm]

時間	炉圧 [MPa (gage)]	炉水位 [mm] アップセット	炉水温度[°C] 給水ノズル温度	D/W圧力 [kPa(gage)]	D/W温度 [°C]	S/C圧力 [kPa(abs)]	S/C水位 [mm]	S/C温度 [°C]
2011/5/29 12:00	0.00	2488	33.2	10	31.4	110	2100	26
2011/5/29 14:00	0.00	2488	33.3	10	31.4	110	2100	26
2011/5/29 16:00	0.00	2488	33.4	10	31.4	110	2100	26
2011/5/29 18:00	0.00	2489	33.4	10	31.5	110	2100	26
2011/5/29 20:00	0.00	2489	33.5	10	31.4	110	2100	26
2011/5/29 22:00	0.00	2489	33.5	10	31.5	110	2100	26
2011/5/30 0:00	0.00	2489	33.6	10	31.5	110	2100	26
2011/5/30 2:00	0.00	2490	33.6	11	31.5	110	2100	26
2011/5/30 4:00	0.00	2490	33.7	11	31.5	110	2100	26
2011/5/30 6:00	0.00	2490	33.7	11	31.5	110	2100	26
2011/5/30 8:00	0.00	2490	33.8	11	31.5	110	2100	26
2011/5/30 10:00	0.00	2490	33.9	11	31.5	110	2100	26
2011/5/30 12:00	0.00	2492	33.9	11	31.5	110	2100	26
2011/5/30 14:00	0.00	2492	34.0	11	31.4	110	2100	26
2011/5/30 16:00	0.00	2492	34.0	11	31.5	110	2100	26
2011/5/30 18:00	0.00	2492	34.1	11	31.5	110	2100	26
2011/5/30 20:00	0.00	2493	34.1	10	31.5	110	2100	26
2011/5/30 22:00	0.00	2493	34.1	10	31.5	110	2100	26
2011/5/31 0:00	0.00	2493	34.1	10	31.5	110	2100	26
2011/5/31 2:00	0.00	2496	34.0	10	31.7	110	2100	26
2011/5/31 4:00	0.00	2495	34.0	10	31.7	110	2100	26
2011/5/31 6:00	0.00	2495	33.9	10	31.7	110	2100	26
2011/5/31 8:00	0.00	2495	33.9	9	31.7	110	2100	26
2011/5/31 10:00	0.00	2495	33.9	9	31.7	110	2100	26
2011/5/31 12:00	0.00	2495	33.8	9	31.7	110	2100	26
2011/5/31 14:00	0.00	2495	33.8	9	31.6	110	2100	26
2011/5/31 16:00	0.00	2495	33.7	9	31.5	110	2100	26
2011/5/31 18:00	0.00	2495	33.8	9	31.7	110	2100	26
2011/5/31 20:00	0.00	2495	33.8	9	31.6	110	2100	26
2011/5/31 22:00	0.00	2495	33.8	9	31.5	110	2100	26
2011/6/1 0:00	0.00	2495	33.9	9	31.5	110	2100	26
2011/6/1 2:00	0.00	2495	33.8	9	31.6	110	2100	26
2011/6/1 4:00	0.00	2495	33.8	9	31.6	110	2100	26
2011/6/1 6:00	0.00	2495	33.8	9	31.6	110	2100	26
2011/6/1 8:00	0.00	2495	33.8	9	31.6	110	2100	26
2011/6/1 10:00	0.00	2495	33.8	9	31.5	110	2100	26
2011/6/1 12:00	0.00	2495	33.9	9	31.5	110	2100	26

## 2F-4号機

※燃料頂部(TAF)からの水位=炉水位+4200[mm]

時間	炉圧 [MPa (gage)]	炉水位 [mm] アツプセット	炉水温度[°C] 給水/スル温度	D/W圧力 [kPa(gage)]	D/W温度 [°C]	S/C圧力 [kPa(abs)]	S/C水位 [mm]	S/C温度 [°C]
2011/5/29 12:00	0.08	4589	26.6	5	29.1	106	2000	27
2011/5/29 14:00	0.08	4589	26.5	5	29.2	106	2000	27
2011/5/29 16:00	0.08	4589	26.5	6	29.3	106	2000	27
2011/5/29 18:00	0.08	4589	26.5	6	29.0	106	2000	27
2011/5/29 20:00	0.08	4589	26.5	6	28.9	106	2000	27
2011/5/29 22:00	0.08	4589	26.5	6	28.9	106	2000	27
2011/5/30 0:00	0.08	4589	26.5	6	29.0	106	2000	27
2011/5/30 2:00	0.08	4589	26.5	6	28.6	106	2000	27
2011/5/30 4:00	0.08	4589	26.5	6	28.6	106	2000	27
2011/5/30 6:00	0.08	4589	26.6	7	28.9	106	2000	27
2011/5/30 8:00	0.08	4589	26.5	7	28.7	106	2000	27
2011/5/30 10:00	0.08	4589	26.6	7	28.9	106	2000	27
2011/5/30 12:00	0.08	4589	26.6	7	29.2	106	2000	27
2011/5/30 14:00	0.08	4589	26.5	7	28.9	106	2000	27
2011/5/30 16:00	0.08	4589	26.6	6	28.9	106	2000	27
2011/5/30 18:00	0.08	4589	26.6	6	29.2	106	2000	27
2011/5/30 20:00	0.08	4589	26.6	6	28.7	106	2000	27
2011/5/30 22:00	0.08	4589	26.6	6	28.8	106	2000	27
2011/5/31 0:00	0.08	4589	26.7	6	29.0	106	2000	27
2011/5/31 2:00	0.07	4589	26.6	5	28.9	106	2000	27
2011/5/31 4:00	0.07	4589	26.7	5	28.6	106	2000	27
2011/5/31 6:00	0.07	4589	26.6	5	28.6	106	2000	27
2011/5/31 8:00	0.07	4589	26.7	5	28.6	106	2000	27
2011/5/31 10:00	0.07	4589	26.6	5	28.8	106	2050	27
2011/5/31 12:00	0.07	4589	26.7	5	29.3	106	2050	27
2011/5/31 14:00	0.07	4589	26.6	5	29.1	106	2050	27
2011/5/31 16:00	0.07	4589	26.7	5	28.6	106	2050	27
2011/5/31 18:00	0.07	4589	26.7	4	28.5	106	2050	27
2011/5/31 20:00	0.07	4589	26.6	4	28.5	106	2000	27
2011/5/31 22:00	0.07	4589	26.6	4	28.8	106	2000	27
2011/6/1 0:00	0.07	4589	26.7	4	29.1	106	2000	27
2011/6/1 2:00	0.07	4589	26.7	4	28.6	106	2000	27
2011/6/1 4:00	0.07	4589	26.6	4	28.7	106	2000	27
2011/6/1 6:00	0.07	4589	26.7	4	28.8	106	2000	27
2011/6/1 8:00	0.07	4589	26.6	4	28.7	106	2000	27
2011/6/1 10:00	0.07	4589	26.6	4	28.5	106	2000	27
2011/6/1 12:00	0.07	4589	26.7	4	28.7	106	2000	27