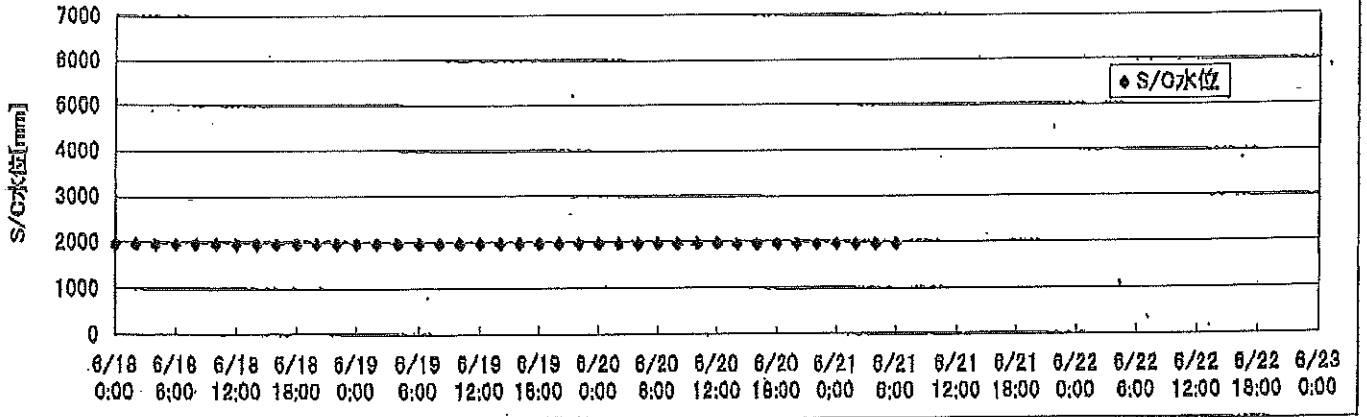
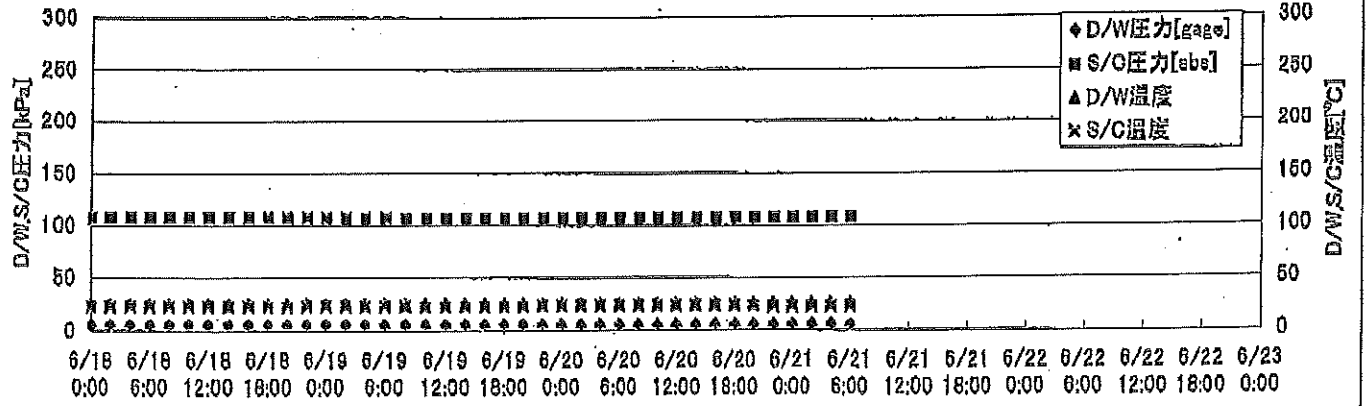
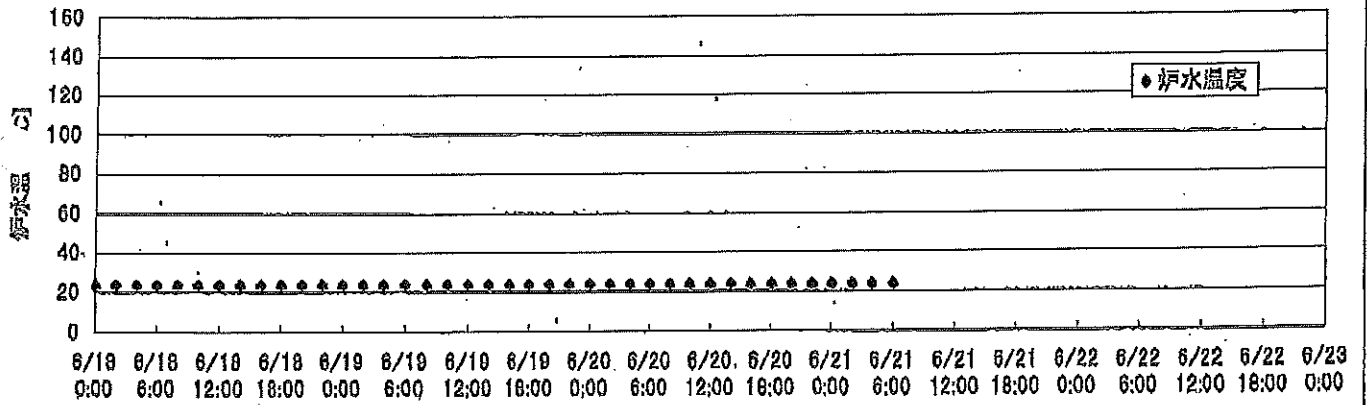
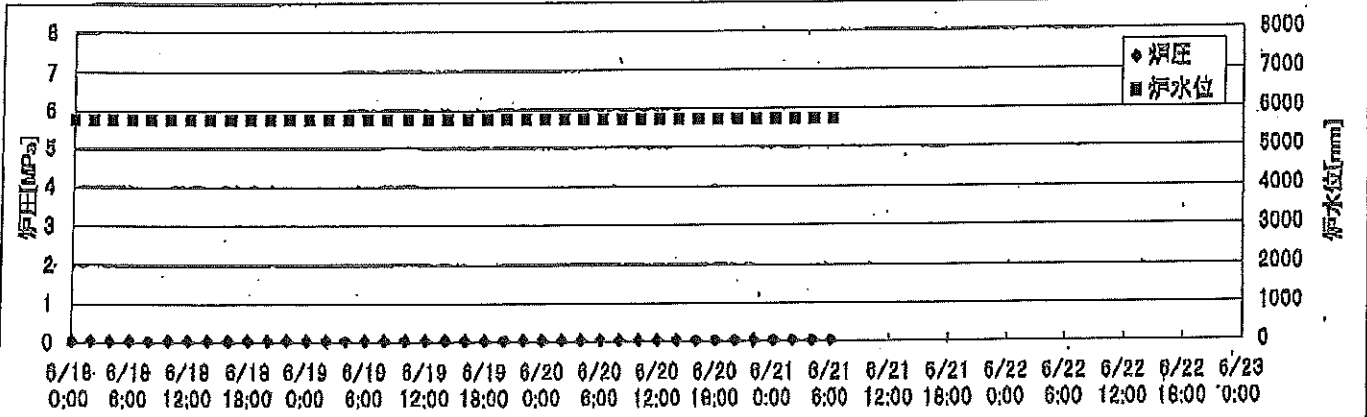
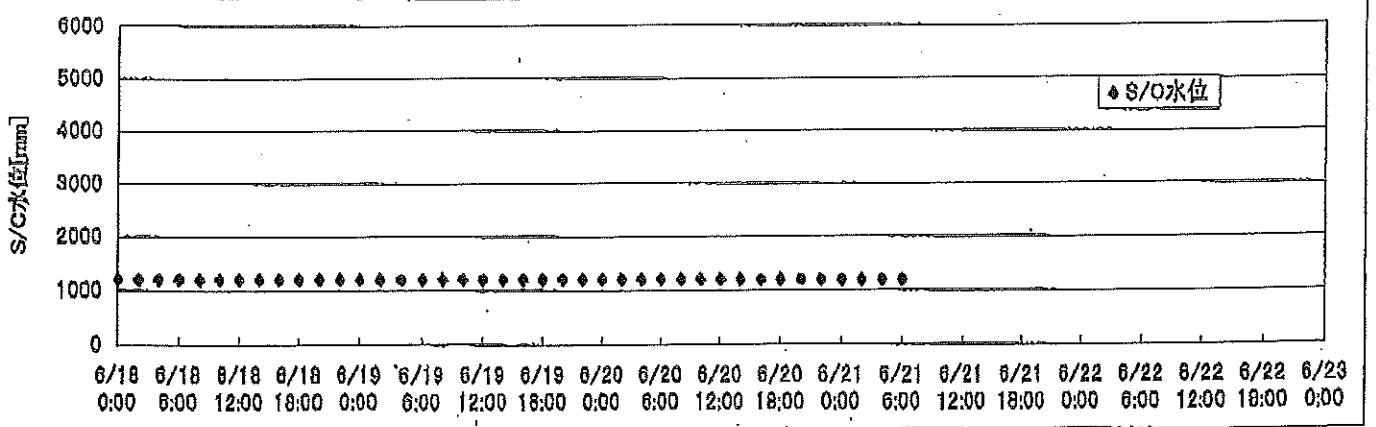
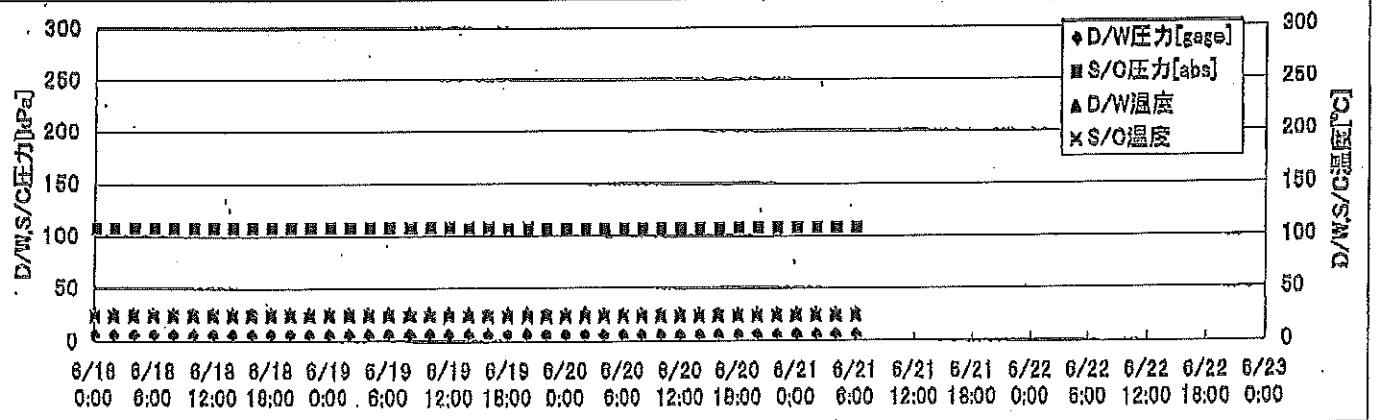
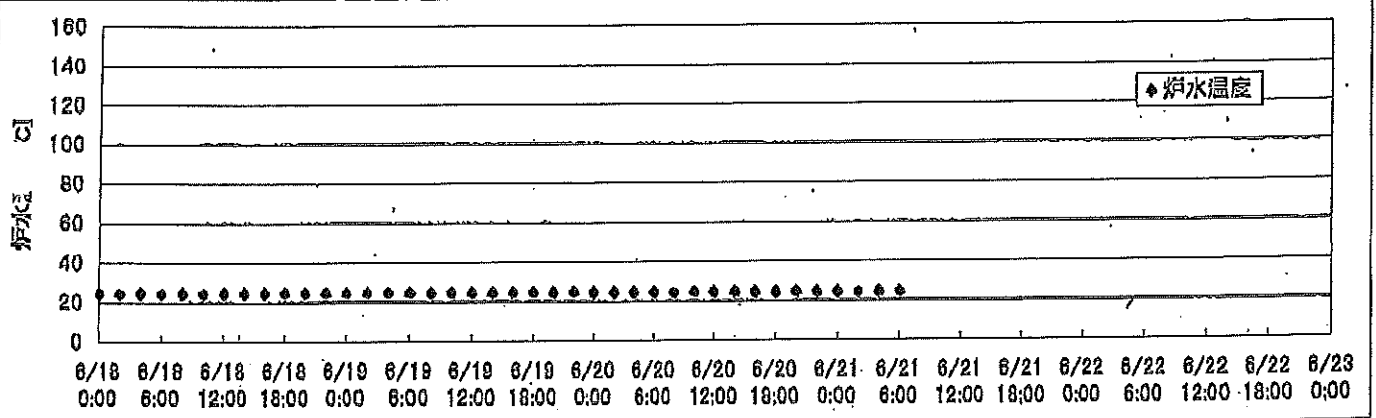
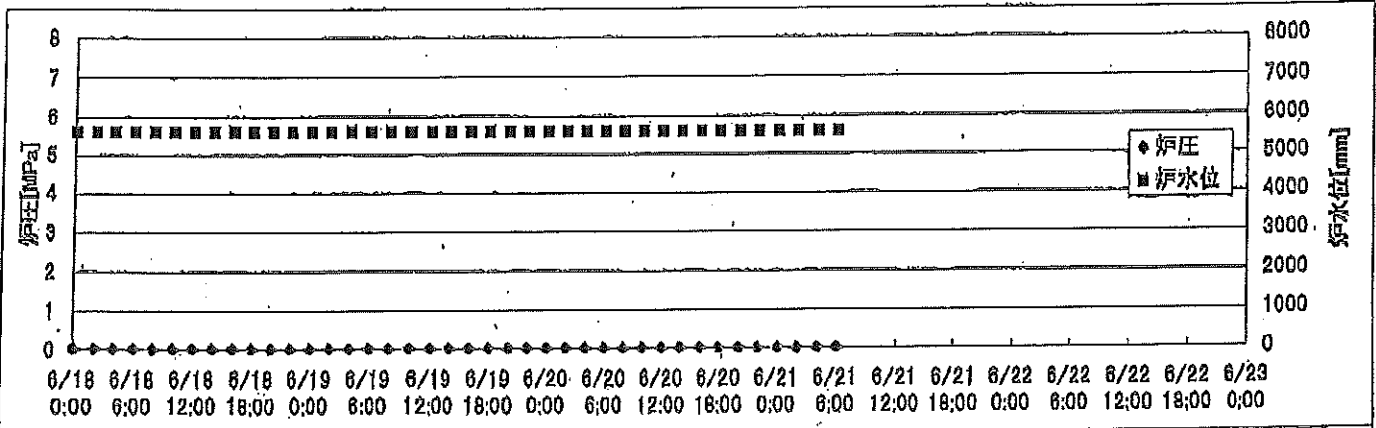


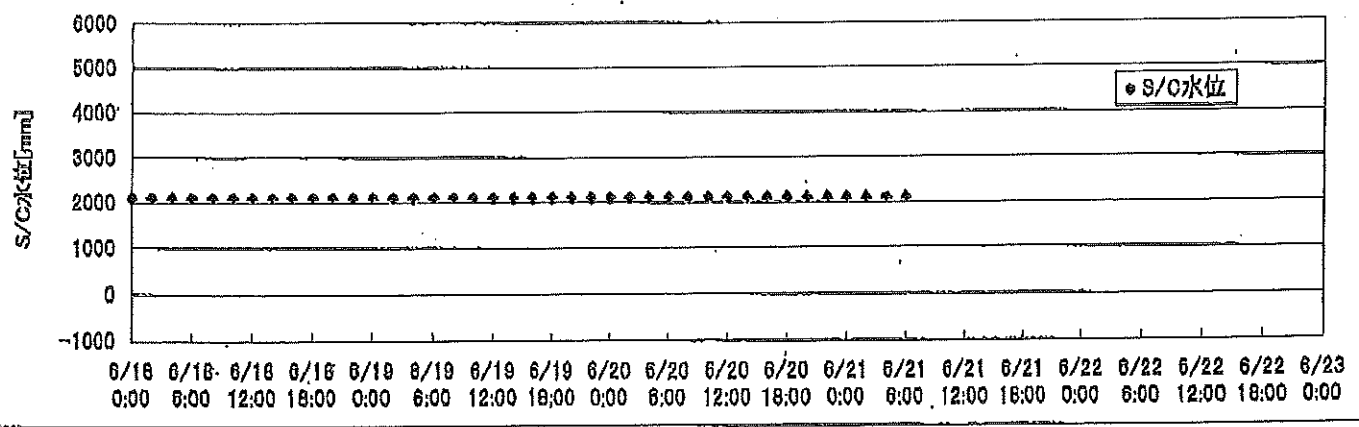
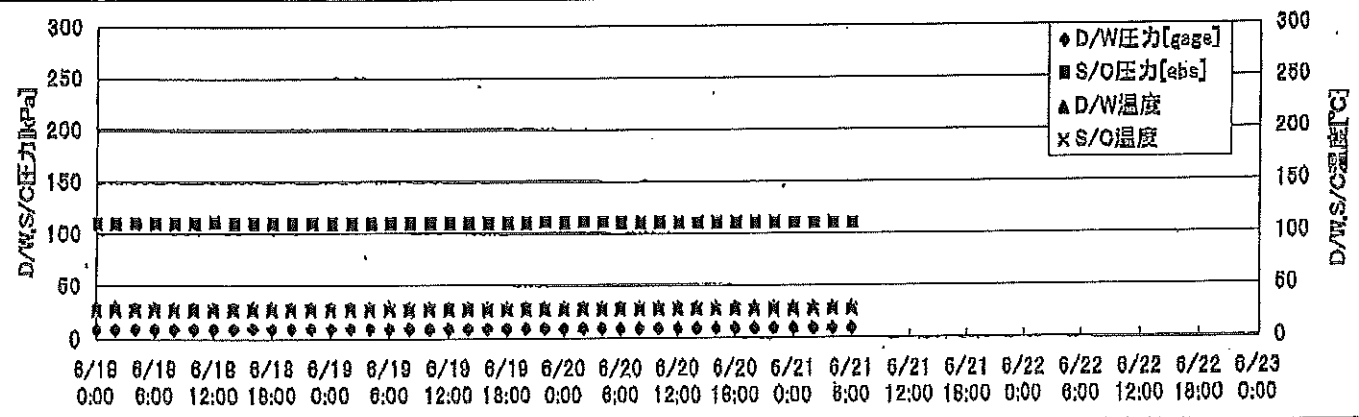
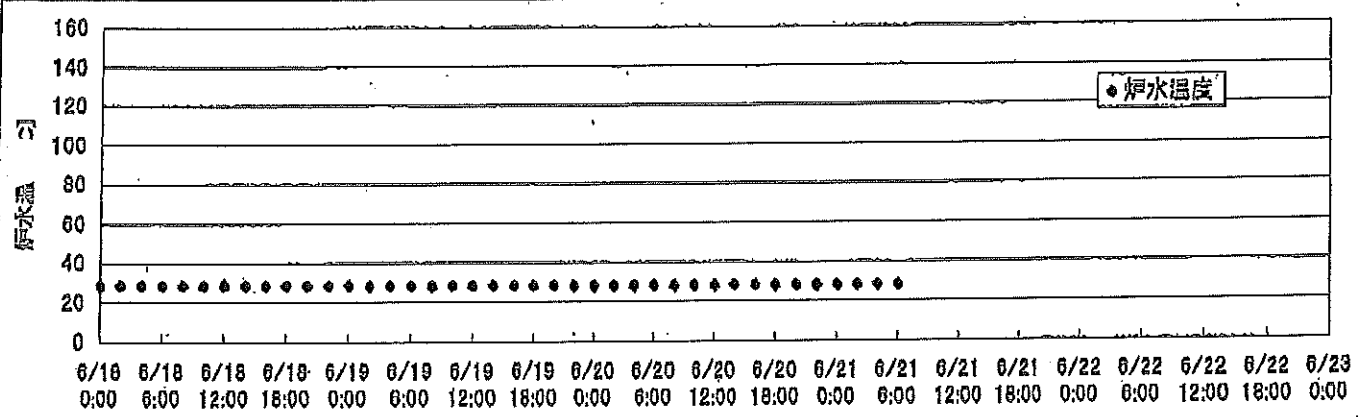
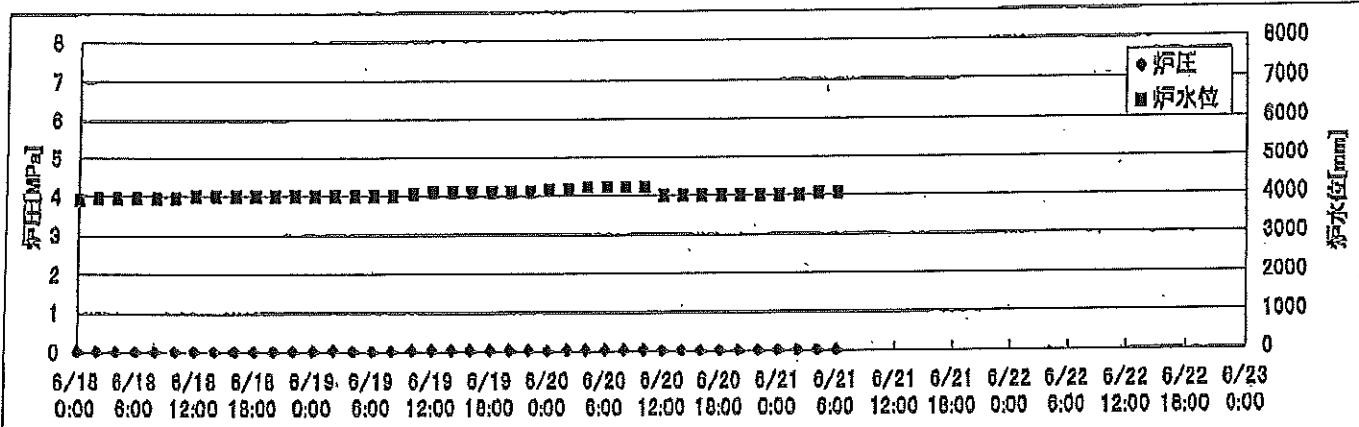
2F-1号機



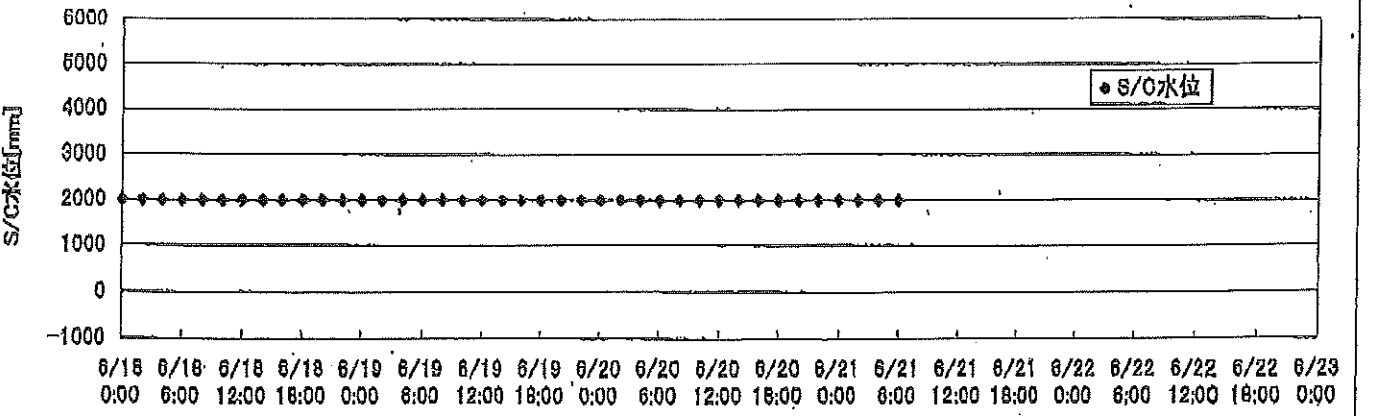
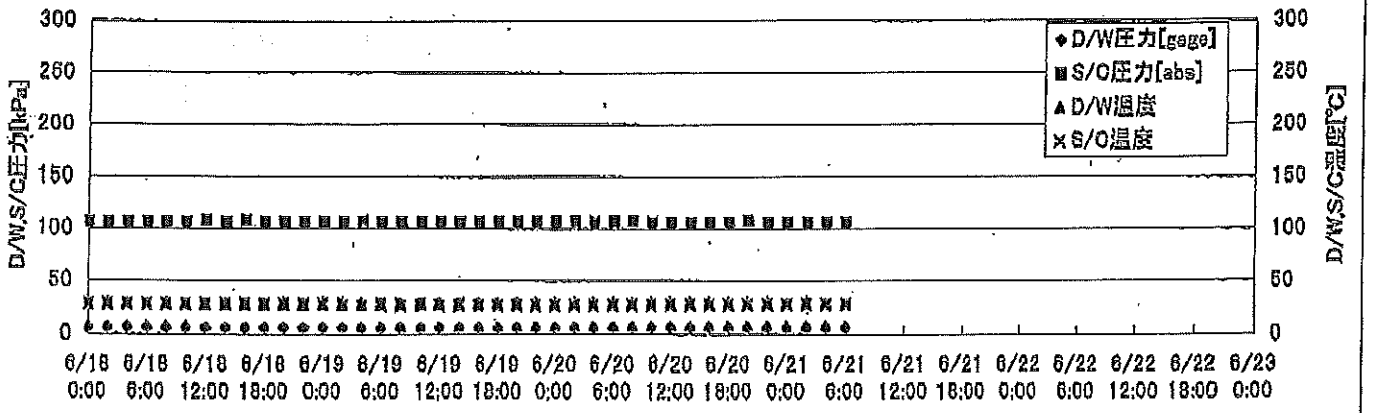
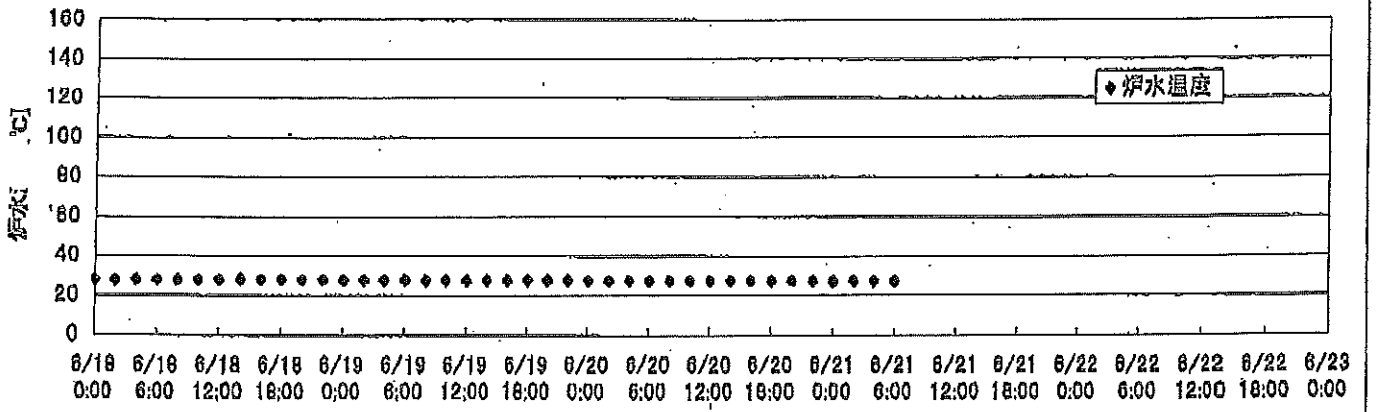
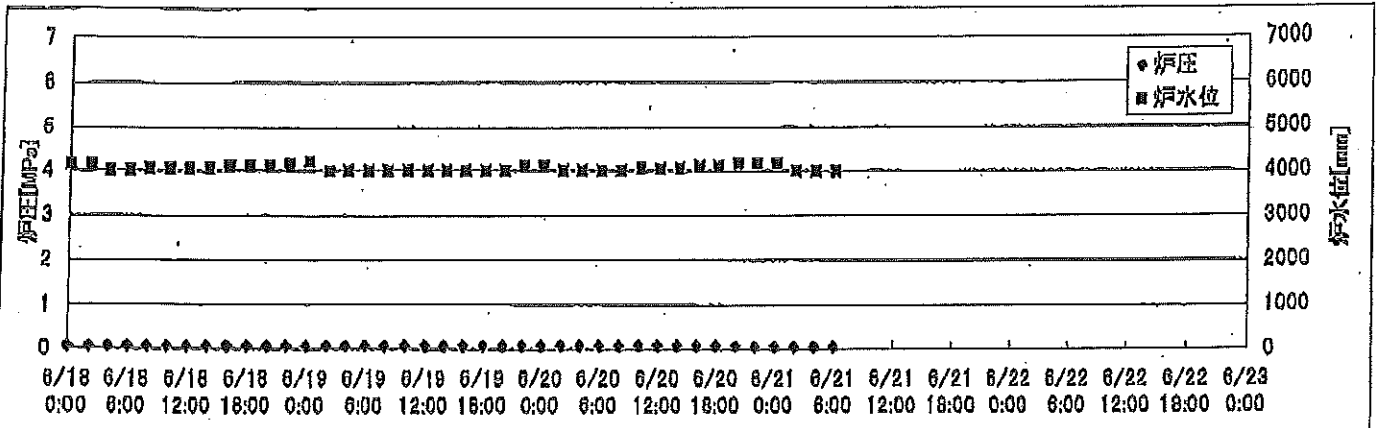
2F-2号機



2F-3号機



2F-4号機



2F-3号機

※燃料頂部(TAF)からの水位=炉水位+4200[mm]

時間	炉圧 [MPa (gage)]	炉水位 [mm] 停止時	炉水温度[°C]	D/W圧力 [kPa(gage)]	D/W温度 [°C]	S/C圧力 [kPa(abs)]	S/C水位 [mm]	S/C温度 [°C]
2011/6/19 0:00	0.02	4000	28.5	10	29.6	110	2100	27
2011/6/19 2:00	0.03	4000	28.4	10	29.6	110	2100	27
2011/6/19 4:00	0.02	4000	28.4	10	29.6	110	2100	27
2011/6/19 6:00	0.02	4000	28.3	10	29.6	110	2100	27
2011/6/19 8:00	0.02	4000	28.3	10	29.6	110	2100	27
2011/6/19 10:00	0.03	4050	28.3	10	29.6	110	2100	27
2011/6/19 12:00	0.03	4100	28.4	10	29.6	110	2100	27
2011/6/19 14:00	0.03	4100	28.4	10	29.5	110	2100	27
2011/6/19 16:00	0.03	4100	28.4	10	29.5	110	2100	27
2011/6/19 18:00	0.03	4100	28.4	10	29.5	110	2100	27
2011/6/19 20:00	0.03	4100	28.3	9	29.5	110	2100	27
2011/6/19 22:00	0.03	4100	28.2	9	29.5	111	2100	27
2011/6/20 0:00	0.02	4150	28.2	9	29.5	110	2100	27
2011/6/20 2:00	0.03	4150	28.2	9	29.5	111	2100	27
2011/6/20 4:00	0.03	4200	28.2	9	29.5	111	2100	27
2011/6/20 6:00	0.03	4200	28.2	9	29.5	110	2100	27
2011/6/20 8:00	0.03	4200	28.2	9	29.5	110	2100	27
2011/6/20 10:00	0.03	4200	28.2	9	29.4	110	2100	27
2011/6/20 12:00	0.02	4000	28.2	9	29.5	110	2100	27
2011/6/20 14:00	0.02	4000	28.3	10	29.5	110	2100	27
2011/6/20 16:00	0.02	4000	28.3	10	29.5	110	2100	27
2011/6/20 18:00	0.02	4000	28.4	10	29.5	110	2100	27
2011/6/20 20:00	0.02	4000	28.3	10	29.5	110	2100	27
2011/6/20 22:00	0.02	4000	28.2	9	29.5	110	2100	27
2011/6/21 0:00	0.02	4000	28.3	10	29.5	110	2100	27
2011/6/21 2:00	0.02	4000	28.3	10	29.5	110	2100	27
2011/6/21 4:00	0.02	4050	28.3	10	29.5	110	2100	27
2011/6/21 6:00	0.02	4050	28.3	10	29.5	110	2100	27
2011/6/21 8:00								
2011/6/21 10:00								
2011/6/21 12:00								
2011/6/21 14:00								
2011/6/21 16:00								
2011/6/21 18:00								
2011/6/21 20:00								
2011/6/21 22:00								
2011/6/22 0:00								

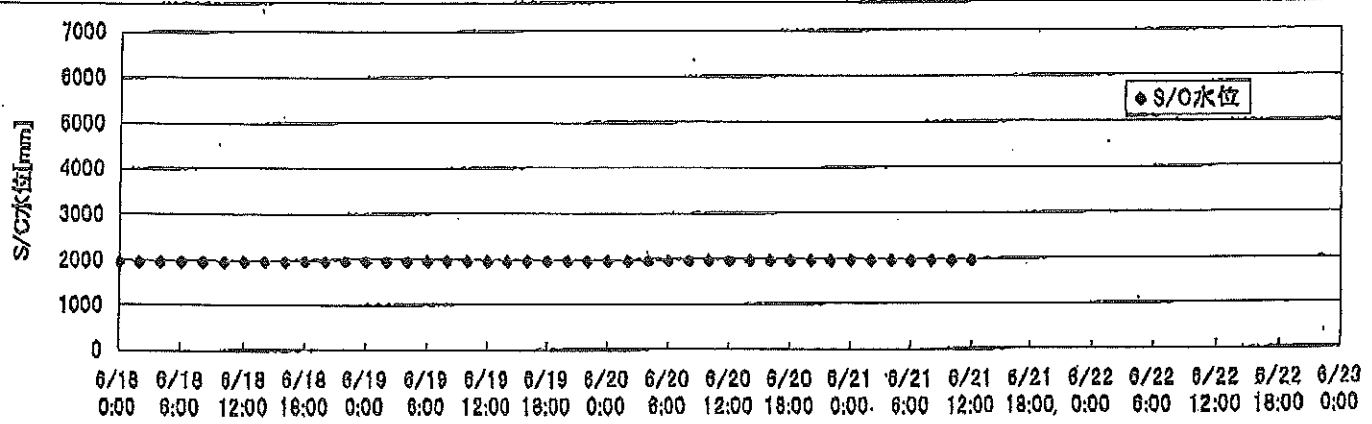
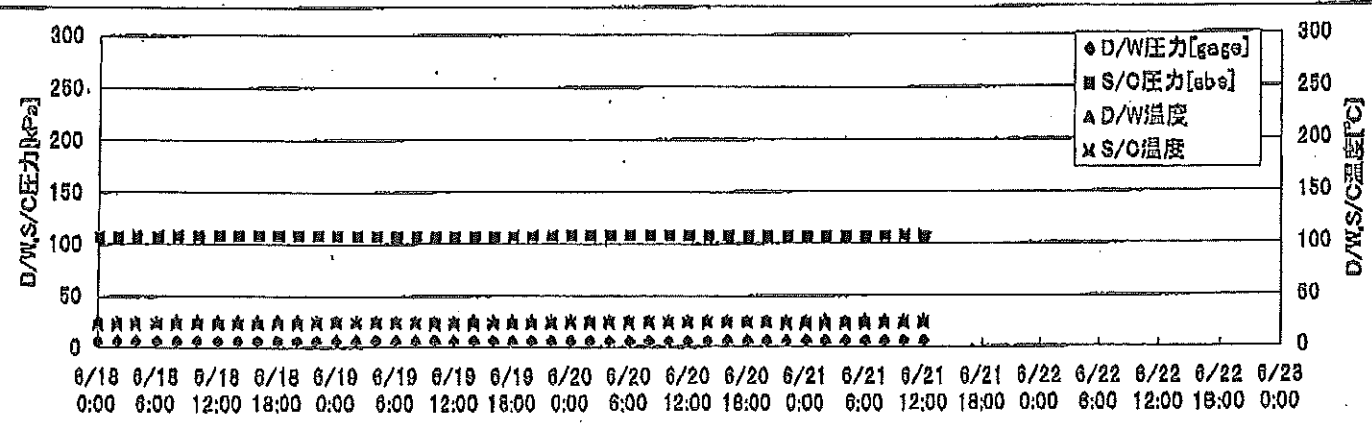
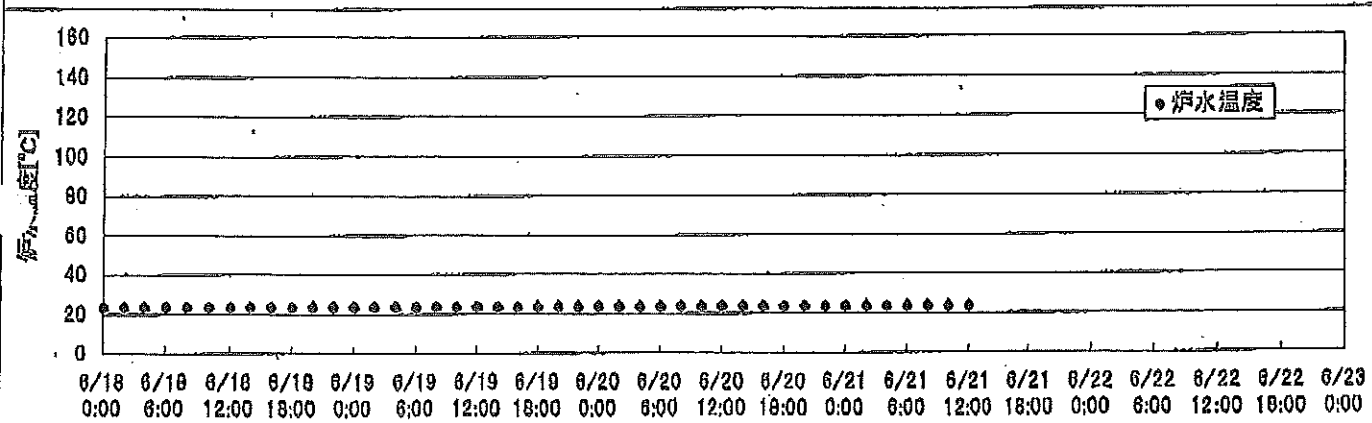
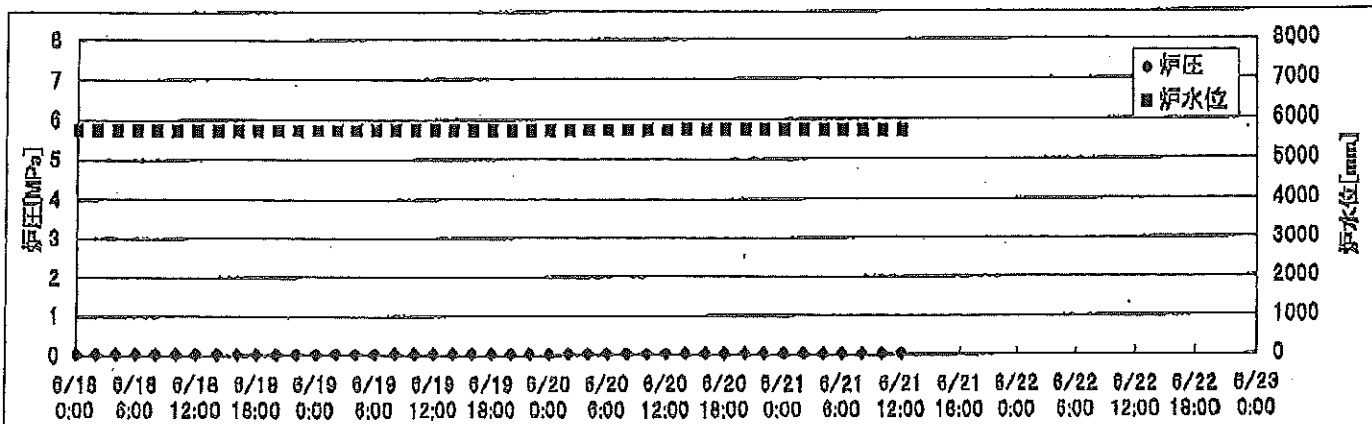
2011年 06月 21日 15時 13分
 東京電力(株) 原子力発電部 技術課
 No. 9900 r. 24

2F-4号機

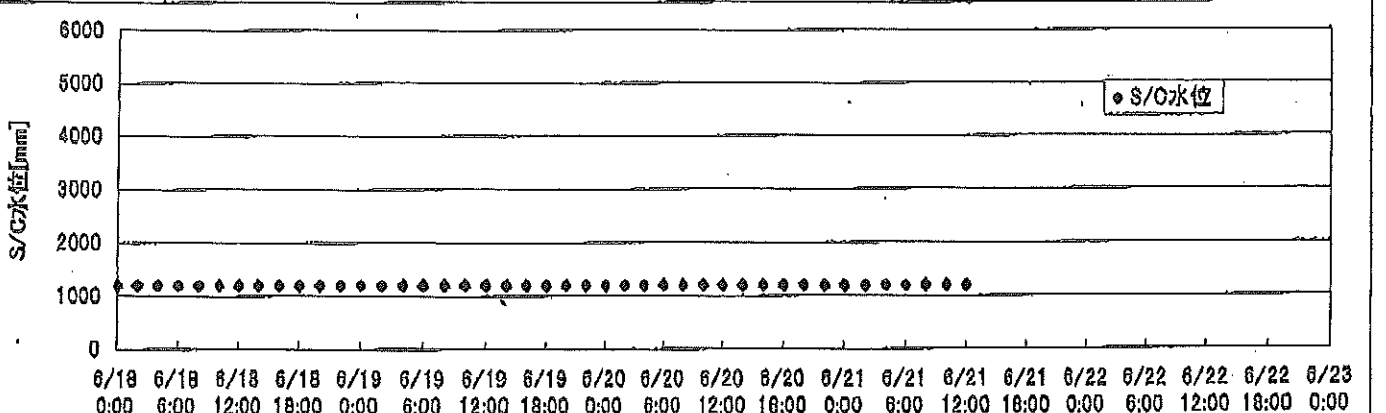
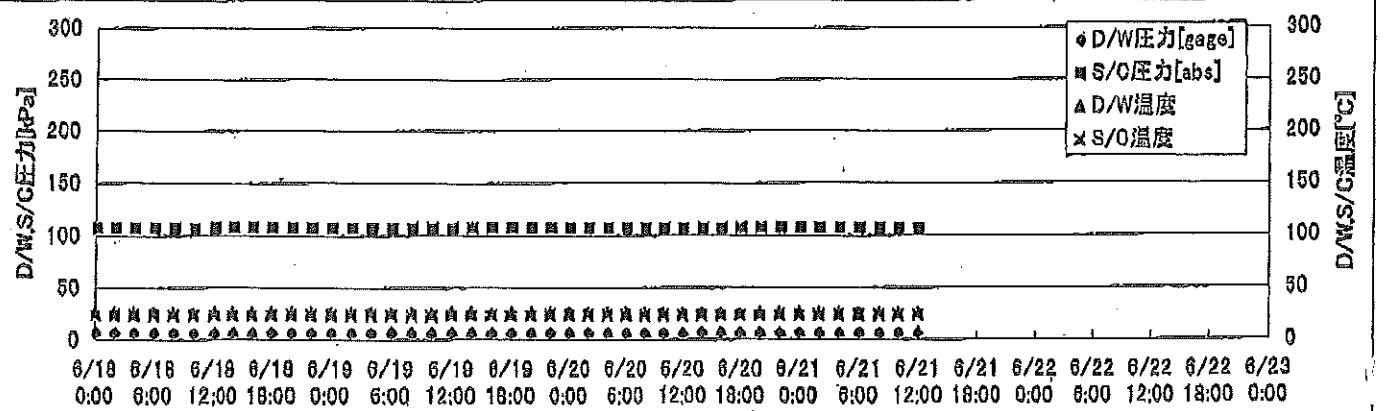
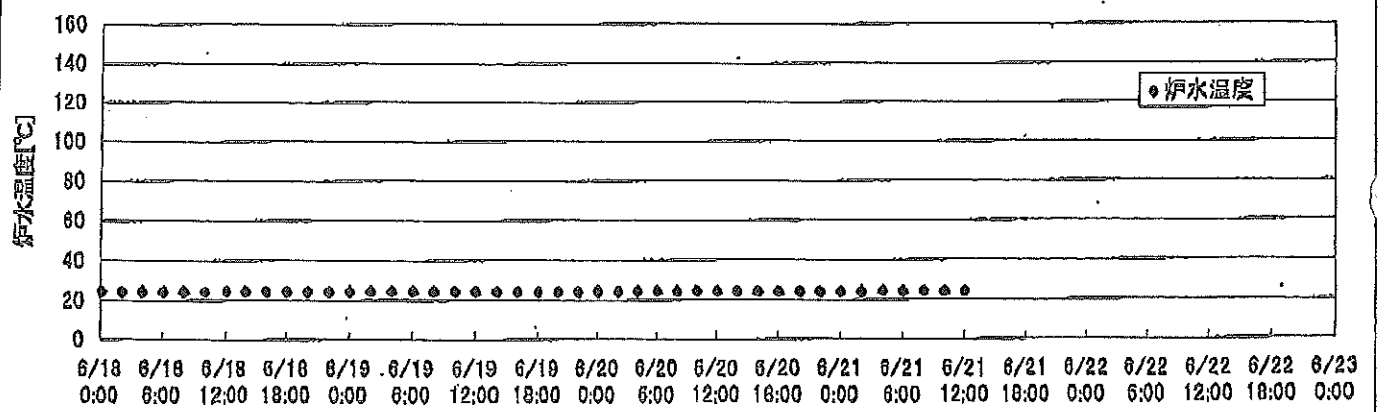
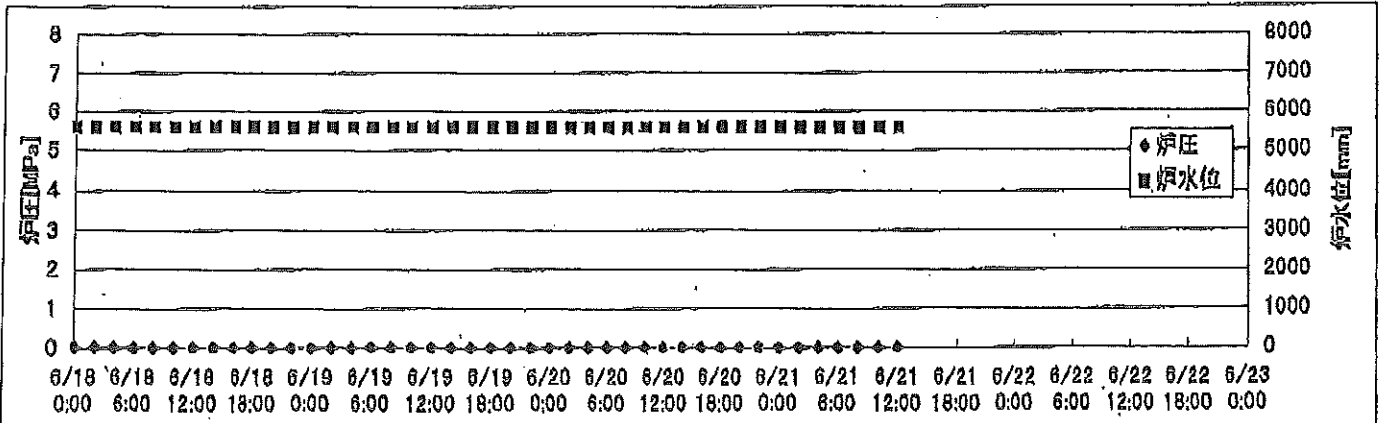
※燃料頂部(TAF)からの水位=炉水位+4200[mm]

時間	炉圧 [MPa (gage)]	炉水位 [mm] 停止時	炉水温度[°C]	D/W圧力 [kPa(gage)]	D/W温度 [°C]	S/C圧力 [kPa(abs)]	S/C水位 [mm]	S/C温度 [°C]
2011/6/19 0:00	0.07	4200	27.8	6	29.2	106	2000	28
2011/6/19 2:00	0.07	4000	27.8	6	29.2	106	2000	28
2011/6/19 4:00	0.07	4000	27.8	6	29.2	107	2000	28
2011/6/19 6:00	0.07	4000	27.8	6	29.2	106	2000	28
2011/6/19 8:00	0.07	4000	27.7	6	29.1	107	2000	28
2011/6/19 10:00	0.07	4000	27.7	6	29.3	107	2000	28
2011/6/19 12:00	0.07	4000	27.7	6	29.2	107	2000	28
2011/6/19 14:00	0.07	4000	27.7	6	29.1	107	2000	28
2011/6/19 16:00	0.07	4000	27.8	6	29.3	106	2000	28
2011/6/19 18:00	0.07	4000	27.8	6	29.2	106	2000	28
2011/6/19 20:00	0.07	4000	27.7	6	29.2	106	2000	28
2011/6/19 22:00	0.07	4100	27.7	6	29.1	106	2000	28
2011/6/20 0:00	0.07	4100	27.6	6	29.2	107	2000	28
2011/6/20 2:00	0.07	4000	27.6	6	29.1	106	2000	28
2011/6/20 4:00	0.07	4000	27.6	6	29.1	106	2000	28
2011/6/20 6:00	0.07	4000	27.6	6	29.1	106	2000	28
2011/6/20 8:00	0.07	4000	27.5	6	29.2	107	2000	28
2011/6/20 10:00	0.07	4050	27.5	6	29.1	106	2000	28
2011/6/20 12:00	0.07	4050	27.6	6	29.1	106	2000	28
2011/6/20 14:00	0.07	4050	27.6	6	29.1	106	2000	28
2011/6/20 16:00	0.07	4100	27.6	6	29.1	106	2000	28
2011/6/20 18:00	0.07	4100	27.6	6	29.1	106	2000	28
2011/6/20 20:00	0.07	4150	27.5	6	29.1	107	2000	28
2011/6/20 22:00	0.06	4150	27.5	6	29.1	106	2000	28
2011/6/21 0:00	0.06	4150	27.4	6	29.1	106	2000	28
2011/6/21 2:00	0.05	4000	27.5	6	29.1	106	2000	28
2011/6/21 4:00	0.05	4000	27.5	6	29.1	106	2000	28
2011/6/21 6:00	0.05	4000	27.5	6	29.1	106	2000	28
2011/6/21 8:00								
2011/6/21 10:00								
2011/6/21 12:00								
2011/6/21 14:00								
2011/6/21 16:00								
2011/6/21 18:00								
2011/6/21 20:00								
2011/6/21 22:00								
2011/6/22 0:00								

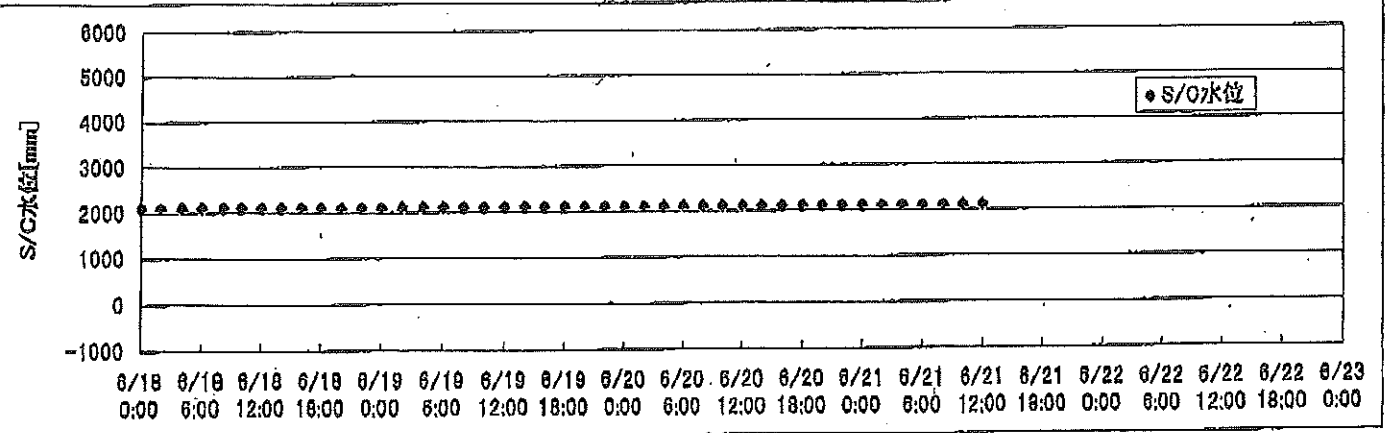
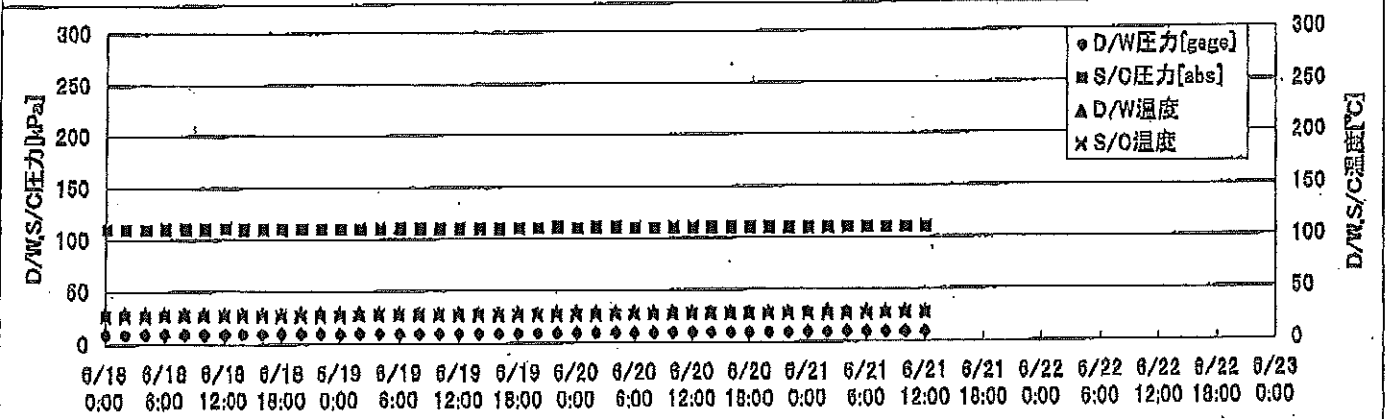
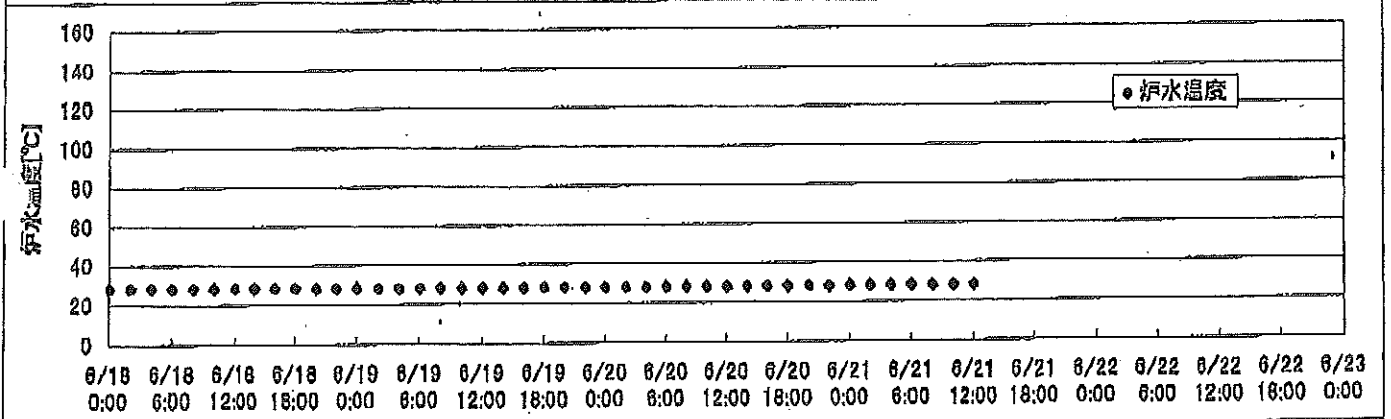
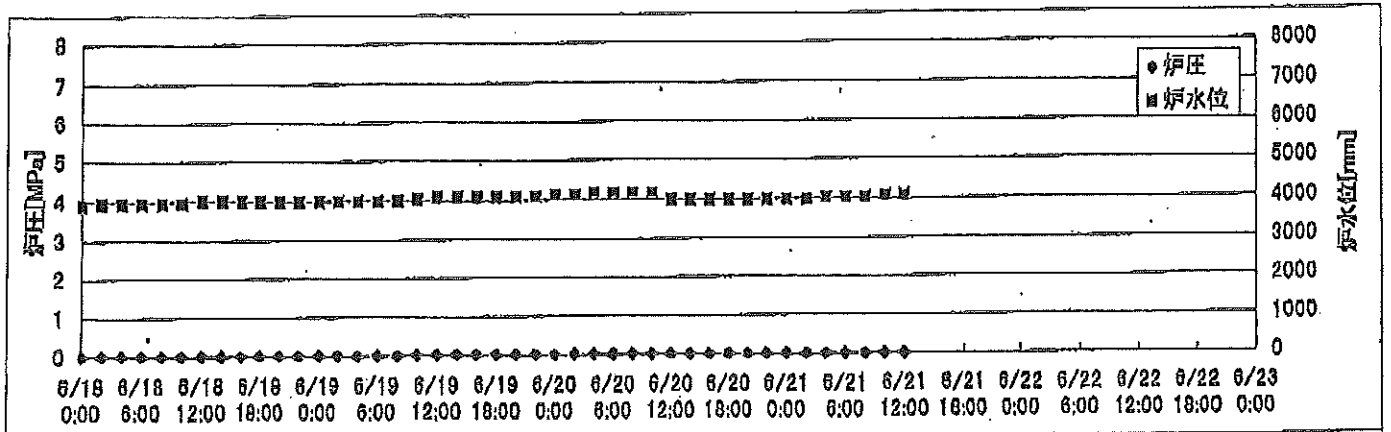
2F-1号機



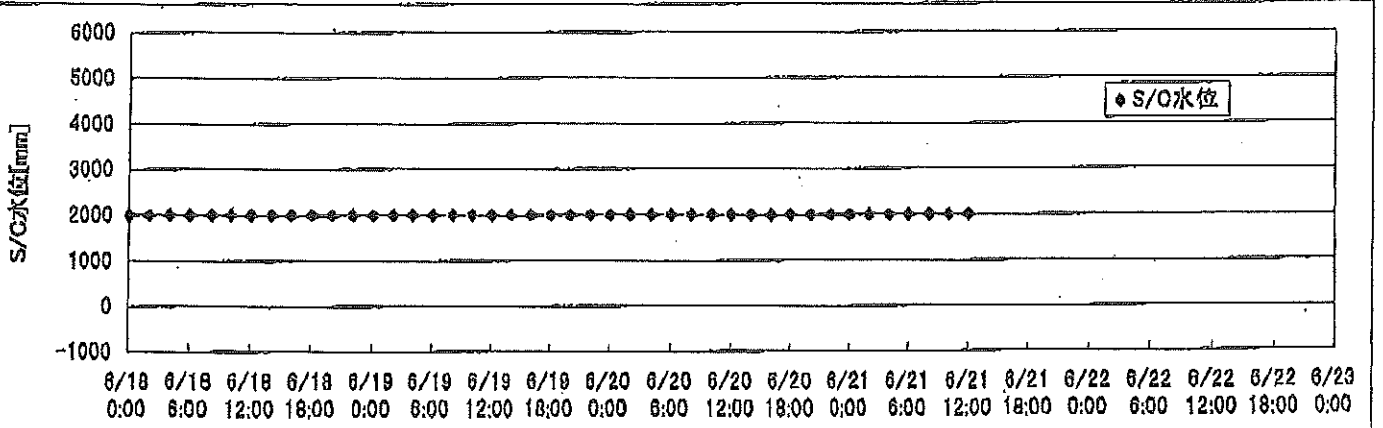
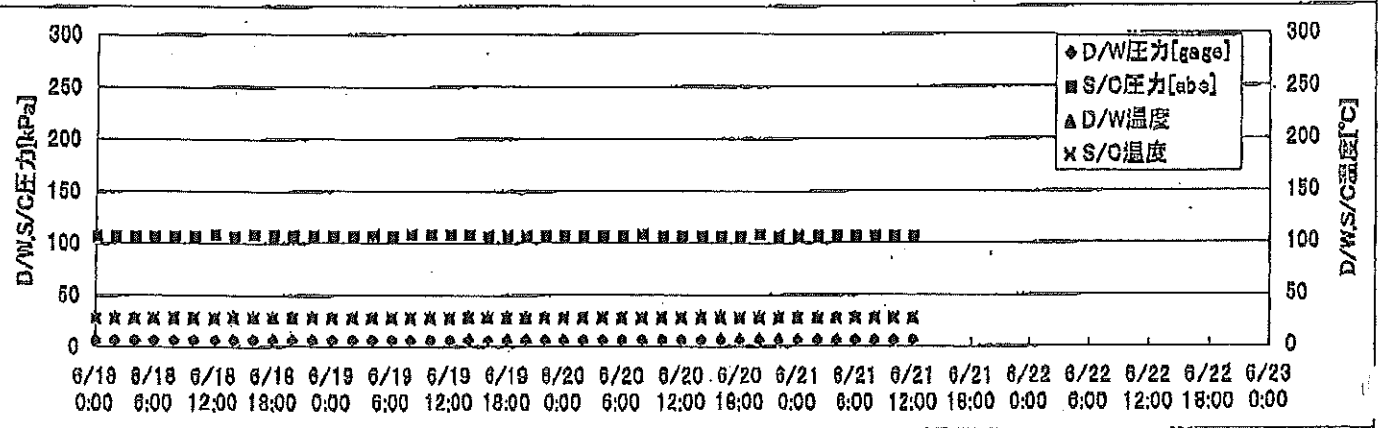
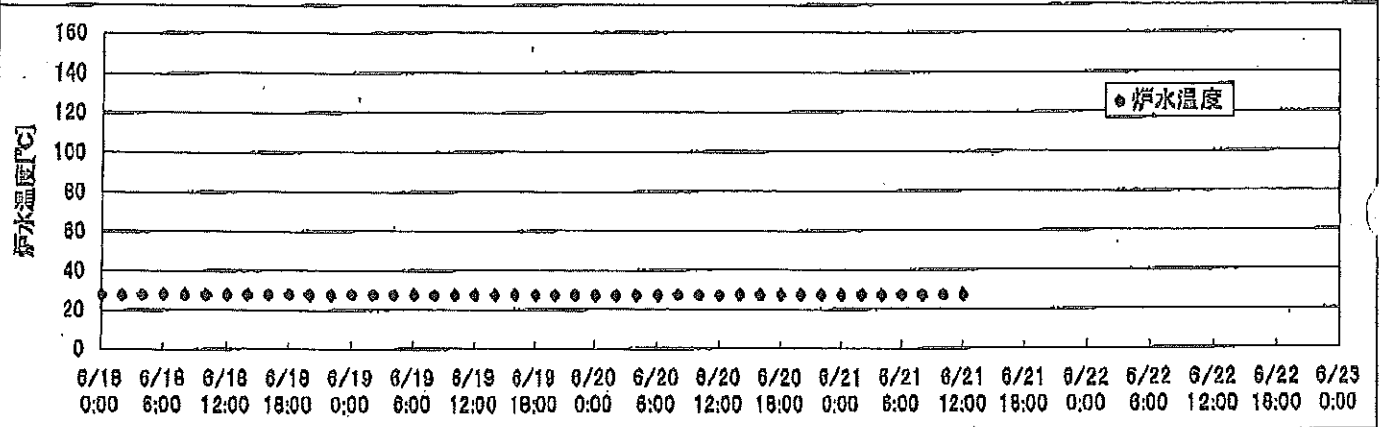
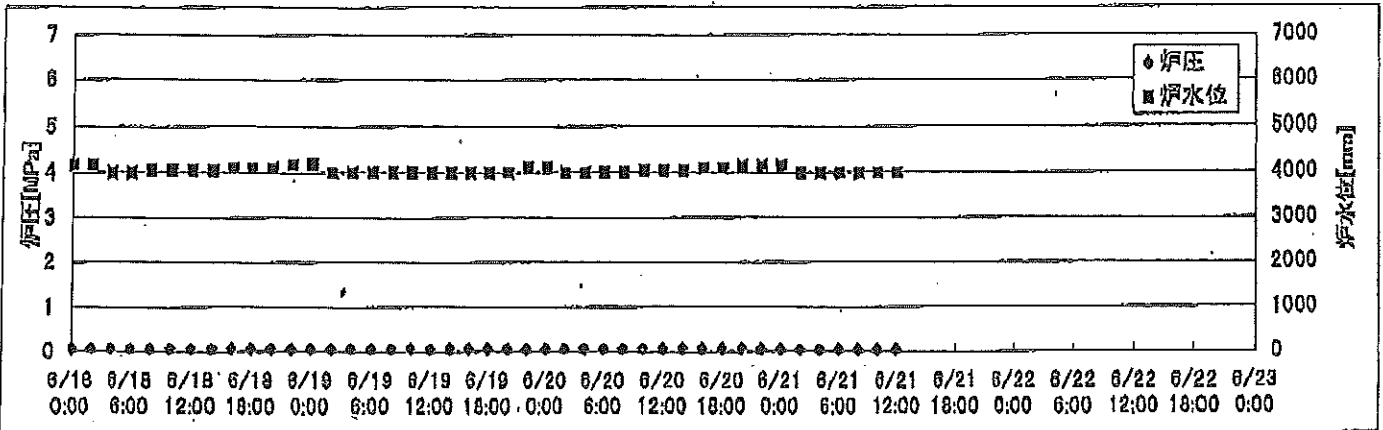
2F-2号機



2F-3号機



2F-4号機



2F-1号機

※燃料頂部(TAF)からの水位=炉水位+4200[mm]

時間	炉圧 [MPa (gage)]	炉水位 [mm] 停止時	炉水温度[°C]	D/W圧力 [kPa(gage)]	D/W温度 [°C]	S/C圧力 [kPa(abs)]	S/C水位 [mm]	S/C温度 [°C]
2011/6/19 0:00	0.05	5750	23.7	6	26.0	107	1955	24
2011/6/19 2:00	0.05	5750	23.7	6	26.0	107	1955	24
2011/6/19 4:00	0.05	5750	23.7	6	26.0	107	1955	24
2011/6/19 6:00	0.05	5750	23.7	6	26.0	107	1952	24
2011/6/19 8:00	0.05	5750	23.7	6	25.9	107	1954	24
2011/6/19 10:00	0.05	5750	23.7	6	26.0	107	1955	23
2011/6/19 12:00	0.05	5750	23.7	6	26.0	107	1955	23
2011/6/19 14:00	0.05	5750	23.7	6	26.0	107	1955	23
2011/6/19 16:00	0.05	5750	23.7	6	26.0	107	1956	23
2011/6/19 18:00	0.05	5750	23.7	6	26.0	107	1956	23
2011/6/19 20:00	0.05	5750	23.7	6	26.0	107	1956	23
2011/6/19 22:00	0.05	5750	23.7	6	25.8	107	1955	24
2011/6/20 0:00	0.05	5750	23.7	6	26.0	107	1954	24
2011/6/20 2:00	0.05	5750	23.7	6	26.0	107	1955	24
2011/6/20 4:00	0.05	5750	23.7	6	26.0	107	1955	24
2011/6/20 6:00	0.05	5750	23.7	6	26.0	107	1955	24
2011/6/20 8:00	0.05	5750	23.6	6	26.0	107	1955	24
2011/6/20 10:00	0.05	5750	23.6	6	26.0	107	1956	24
2011/6/20 12:00	0.05	5750	23.6	6	26.0	107	1955	24
2011/6/20 14:00	0.05	5750	23.6	6	26.0	107	1955	24
2011/6/20 16:00	0.05	5750	23.6	6	26.0	107	1955	24
2011/6/20 18:00	0.05	5750	23.7	6	26.0	107	1955	24
2011/6/20 20:00	0.05	5750	23.6	6	26.0	107	1955	24
2011/6/20 22:00	0.05	5750	23.6	6	26.0	107	1955	23
2011/6/21 0:00	0.05	5750	23.7	6	26.0	107	1955	23
2011/6/21 2:00	0.05	5750	23.7	6	26.0	107	1955	23
2011/6/21 4:00	0.05	5750	23.7	6	26.0	107	1955	23
2011/6/21 6:00	0.05	5750	23.7	6	26.0	107	1954	23
2011/6/21 8:00	0.05	5750	23.7	6	26.0	107	1955	23
2011/6/21 10:00	0.05	5750	23.7	6	26.0	107	1955	24
2011/6/21 12:00	0.05	5750	23.7	6	26.0	107	1955	24
2011/6/21 14:00								
2011/6/21 16:00								
2011/6/21 18:00								
2011/6/21 20:00								
2011/6/21 22:00								
2011/6/22 0:00								

2F-2号機

※燃料頂部(TAF)からの水位=炉水位+4200[mm]

時間	炉圧 [MPa (gage)]	炉水位 [mm] 停止時	炉水温度[°C]	D/W圧力 [kPa(gage)]	D/W温度 [°C]	S/C圧力 [kPa(abs)]	S/C水位 [mm]	S/C温度 [°C]
2011/6/19 0:00	0.02	5600	24.5	6	26.2	107	1200	24
2011/6/19 2:00	0.02	5600	24.6	6	26.3	107	1200	24
2011/6/19 4:00	0.02	5600	24.6	6	26.3	107	1200	24
2011/6/19 6:00	0.02	5600	24.5	6	26.2	107	1200	24
2011/6/19 8:00	0.02	5600	24.5	6	26.2	107	1200	24
2011/6/19 10:00	0.02	5600	24.4	6	26.3	107	1200	24
2011/6/19 12:00	0.02	5600	24.5	6	26.3	107	1200	24
2011/6/19 14:00	0.02	5600	24.5	6	26.3	107	1200	24
2011/6/19 16:00	0.02	5600	24.4	6	26.2	107	1200	24
2011/6/19 18:00	0.02	5600	24.4	6	26.2	107	1200	24
2011/6/19 20:00	0.02	5600	24.4	6	26.2	107	1200	24
2011/6/19 22:00	0.02	5600	24.4	6	26.2	107	1200	24
2011/6/20 0:00	0.02	5600	24.4	6	26.2	107	1200	24
2011/6/20 2:00	0.02	5600	24.4	6	26.3	107	1200	24
2011/6/20 4:00	0.02	5600	24.4	6	26.3	107	1200	24
2011/6/20 6:00	0.02	5600	24.4	6	26.2	107	1200	24
2011/6/20 8:00	0.02	5600	24.3	6	26.2	107	1200	24
2011/6/20 10:00	0.02	5600	24.4	6	26.2	107	1200	24
2011/6/20 12:00	0.02	5600	24.4	6	26.2	107	1200	24
2011/6/20 14:00	0.02	5600	24.4	6	26.2	107	1200	24
2011/6/20 16:00	0.02	5600	24.4	6	26.2	107	1200	24
2011/6/20 18:00	0.02	5600	24.3	6	26.2	107	1200	24
2011/6/20 20:00	0.02	5600	24.4	6	26.2	107	1200	24
2011/6/20 22:00	0.02	5600	24.3	6	26.2	107	1200	24
2011/6/21 0:00	0.02	5600	24.3	6	26.2	107	1200	24
2011/6/21 2:00	0.02	5600	24.3	6	26.2	107	1200	24
2011/6/21 4:00	0.02	5600	24.4	6	26.2	107	1200	24
2011/6/21 6:00	0.02	5600	24.4	6	26.2	107	1200	24
2011/6/21 8:00	0.02	5600	24.4	6	26.2	107	1200	24
2011/6/21 10:00	0.02	5600	24.3	6	26.3	107	1200	24
2011/6/21 12:00	0.02	5600	24.4	6	26.2	107	1200	24
2011/6/21 14:00								
2011/6/21 16:00								
2011/6/21 18:00								
2011/6/21 20:00								
2011/6/21 22:00								
2011/6/22 0:00								

2F-3号機

※燃料頂部(TAF)からの水位=炉水位+4200[mm]

時間	炉圧 [MPa (gage)]	炉水位 [mm] 停止時	炉水温度[°C]	D/W圧力 [kPa(gage)]	D/W温度 [°C]	S/C圧力 [kPa(abs)]	S/C水位 [mm]	S/C温度 [°C]
2011/6/19 0:00	0.02	4000	28.5	10	29.6	110	2100	27
2011/6/19 2:00	0.03	4000	28.4	10	29.6	110	2100	27
2011/6/19 4:00	0.02	4000	28.4	10	29.6	110	2100	27
2011/6/19 6:00	0.02	4000	28.3	10	29.6	110	2100	27
2011/6/19 8:00	0.02	4000	28.3	10	29.6	110	2100	27
2011/6/19 10:00	0.03	4050	28.3	10	29.6	110	2100	27
2011/6/19 12:00	0.03	4100	28.4	10	29.6	110	2100	27
2011/6/19 14:00	0.03	4100	28.4	10	29.5	110	2100	27
2011/6/19 16:00	0.03	4100	28.4	10	29.5	110	2100	27
2011/6/19 18:00	0.03	4100	28.4	10	29.5	110	2100	27
2011/6/19 20:00	0.03	4100	28.3	9	29.5	110	2100	27
2011/6/19 22:00	0.03	4100	28.2	9	29.5	111	2100	27
2011/6/20 0:00	0.02	4150	28.2	9	29.5	110	2100	27
2011/6/20 2:00	0.03	4150	28.2	9	29.5	111	2100	27
2011/6/20 4:00	0.03	4200	28.2	9	29.5	111	2100	27
2011/6/20 6:00	0.03	4200	28.2	9	29.5	110	2100	27
2011/6/20 8:00	0.03	4200	28.2	9	29.5	110	2100	27
2011/6/20 10:00	0.03	4200	28.2	9	29.4	110	2100	27
2011/6/20 12:00	0.02	4000	28.2	9	29.5	110	2100	27
2011/6/20 14:00	0.02	4000	28.3	10	29.5	110	2100	27
2011/6/20 16:00	0.02	4000	28.3	10	29.5	110	2100	27
2011/6/20 18:00	0.02	4000	28.4	10	29.5	110	2100	27
2011/6/20 20:00	0.02	4000	28.3	10	29.5	110	2100	27
2011/6/20 22:00	0.02	4000	28.2	9	29.5	110	2100	27
2011/6/21 0:00	0.02	4000	28.3	10	29.5	110	2100	27
2011/6/21 2:00	0.02	4000	28.3	10	29.5	110	2100	27
2011/6/21 4:00	0.02	4050	28.3	10	29.5	110	2100	27
2011/6/21 6:00	0.02	4050	28.3	10	29.5	110	2100	27
2011/6/21 8:00	0.02	4050	28.3	9	29.5	110	2100	27
2011/6/21 10:00	0.02	4100	28.3	10	29.4	110	2100	27
2011/6/21 12:00	0.02	4100	28.3	10	29.3	110	2100	27
2011/6/21 14:00								
2011/6/21 16:00								
2011/6/21 18:00								
2011/6/21 20:00								
2011/6/21 22:00								
2011/6/22 0:00								

2F-4号機

※燃料頂部(TAF)からの水位=炉水位+4200[mm]

時間	炉圧 [MPa (gage)]	炉水位 [mm] 停止時	炉水温度[°C]	D/W圧力 [kPa(gage)]	D/W温度 [°C]	S/C圧力 [kPa(abs)]	S/C水位 [mm]	S/C温度 [°C]
2011/6/19 0:00	0.07	4200	27.8	6	29.2	106	2000	28
2011/6/19 2:00	0.07	4000	27.8	6	29.2	106	2000	28
2011/6/19 4:00	0.07	4000	27.8	6	29.2	107	2000	28
2011/6/19 6:00	0.07	4000	27.8	6	29.2	106	2000	28
2011/6/19 8:00	0.07	4000	27.7	6	29.1	107	2000	28
2011/6/19 10:00	0.07	4000	27.7	6	29.3	107	2000	28
2011/6/19 12:00	0.07	4000	27.7	6	29.2	107	2000	28
2011/6/19 14:00	0.07	4000	27.7	6	29.1	107	2000	28
2011/6/19 16:00	0.07	4000	27.8	6	29.3	106	2000	28
2011/6/19 18:00	0.07	4000	27.8	6	29.2	106	2000	28
2011/6/19 20:00	0.07	4000	27.7	6	29.2	106	2000	28
2011/6/19 22:00	0.07	4100	27.7	6	29.1	106	2000	28
2011/6/20 0:00	0.07	4100	27.6	6	29.2	107	2000	28
2011/6/20 2:00	0.07	4000	27.6	6	29.1	106	2000	28
2011/6/20 4:00	0.07	4000	27.6	6	29.1	106	2000	28
2011/6/20 6:00	0.07	4000	27.6	6	29.1	106	2000	28
2011/6/20 8:00	0.07	4000	27.5	6	29.2	107	2000	28
2011/6/20 10:00	0.07	4050	27.5	6	29.1	106	2000	28
2011/6/20 12:00	0.07	4050	27.6	6	29.1	106	2000	28
2011/6/20 14:00	0.07	4050	27.6	6	29.1	106	2000	28
2011/6/20 16:00	0.07	4100	27.6	6	29.1	106	2000	28
2011/6/20 18:00	0.07	4100	27.6	6	29.1	106	2000	28
2011/6/20 20:00	0.07	4150	27.5	6	29.1	107	2000	28
2011/6/20 22:00	0.06	4150	27.5	6	29.1	106	2000	28
2011/6/21 0:00	0.06	4150	27.4	6	29.1	106	2000	28
2011/6/21 2:00	0.05	4000	27.5	6	29.1	106	2000	28
2011/6/21 4:00	0.05	4000	27.5	6	29.1	106	2000	28
2011/6/21 6:00	0.05	4000	27.5	6	29.1	106	2000	28
2011/6/21 8:00	0.05	4000	27.5	6	29.1	106	2000	28
2011/6/21 10:00	0.06	4000	27.5	6	29.1	106	2000	28
2011/6/21 12:00	0.06	4000	27.6	6	29.0	106	2000	28
2011/6/21 14:00								
2011/6/21 16:00								
2011/6/21 18:00								
2011/6/21 20:00								
2011/6/21 22:00								
2011/6/22 0:00								