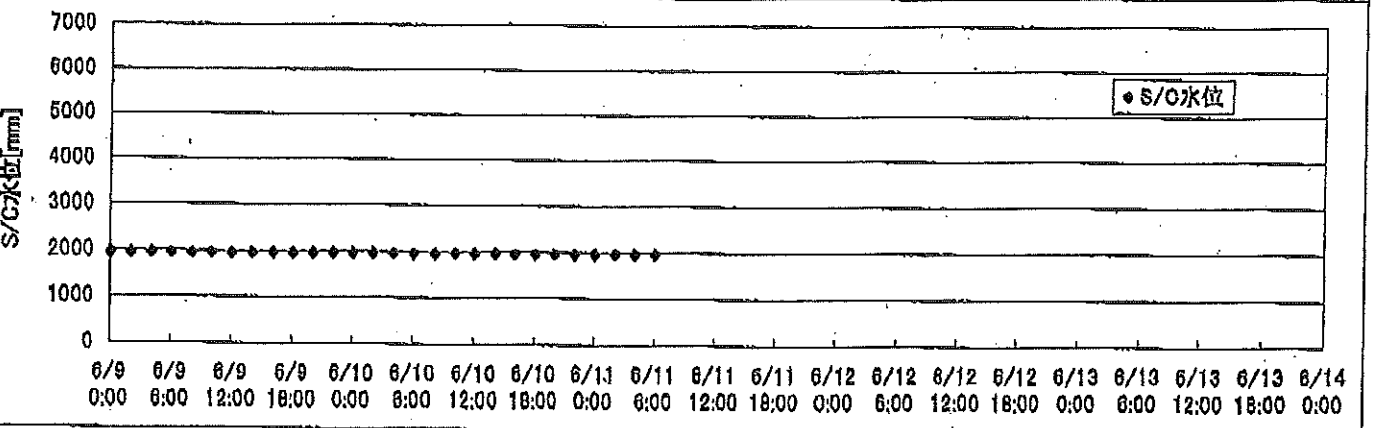
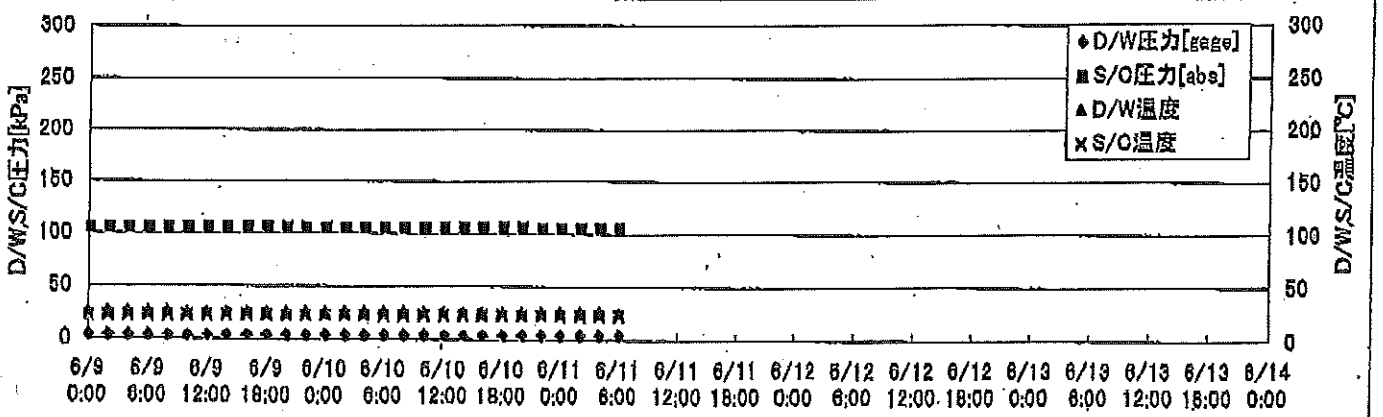
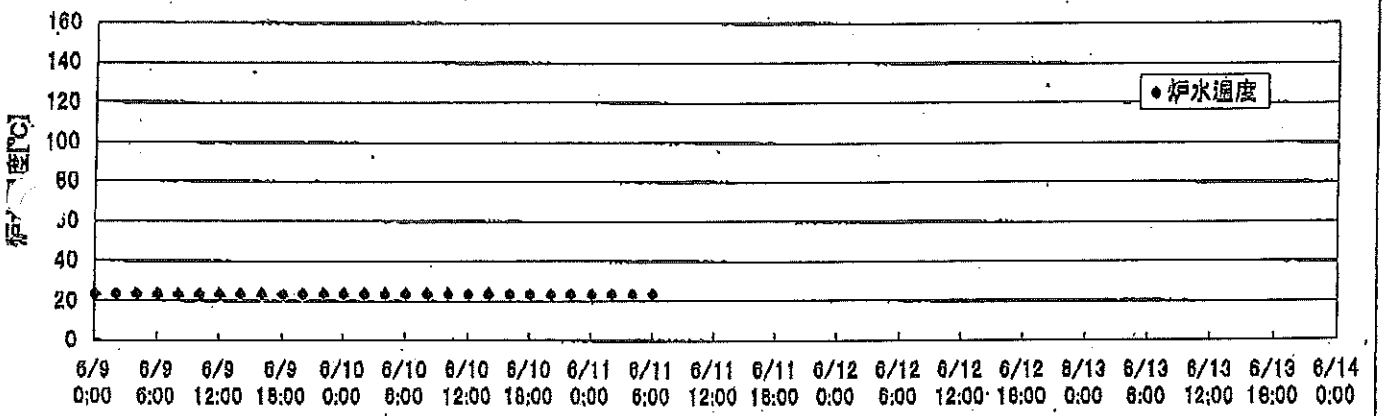
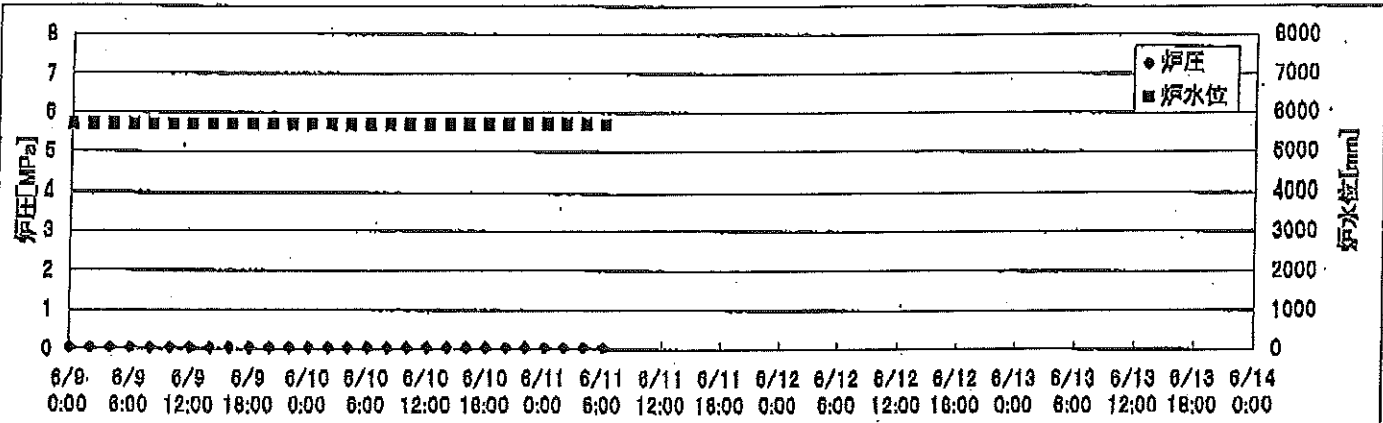
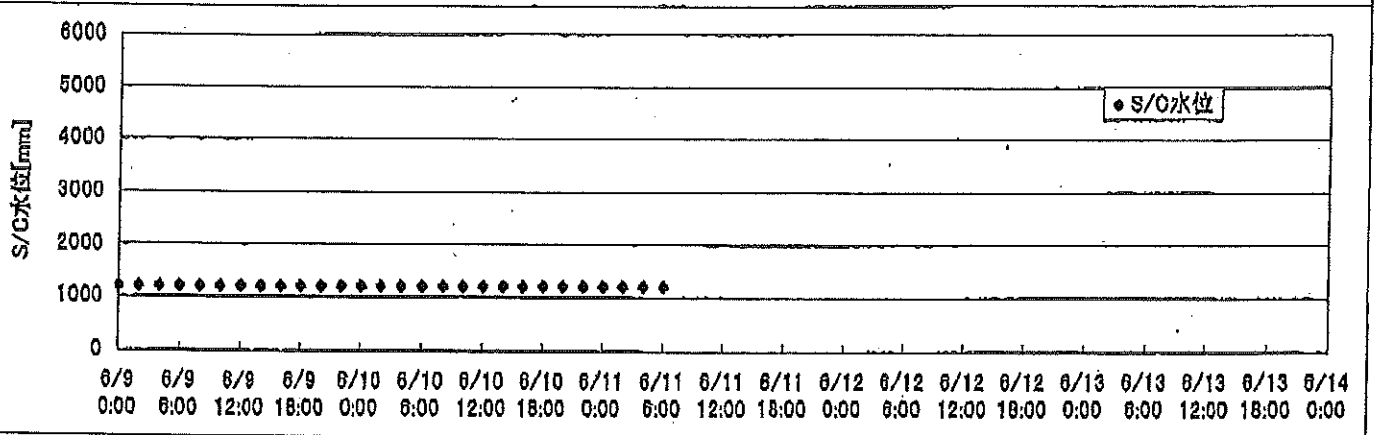
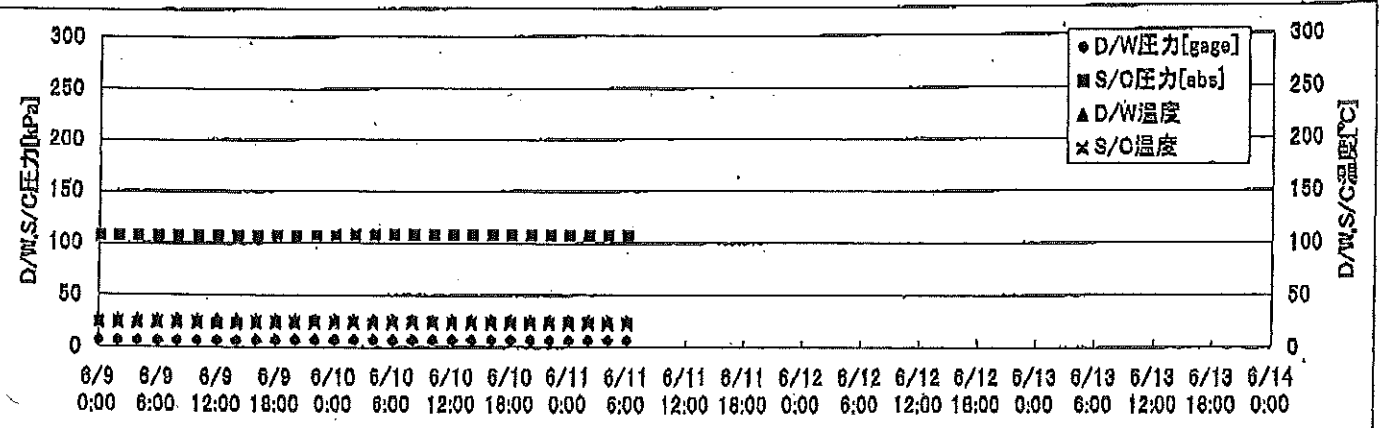
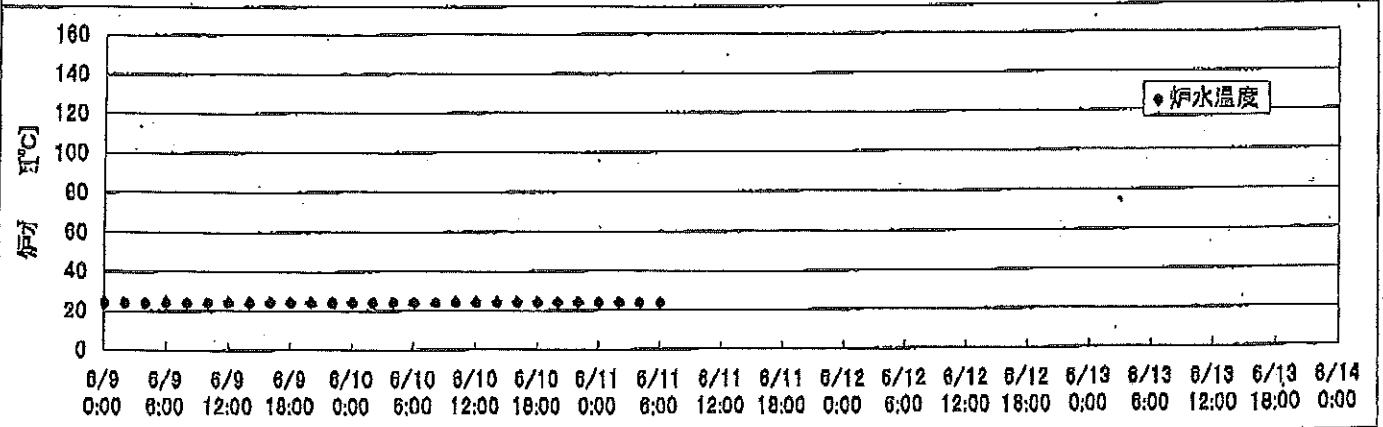
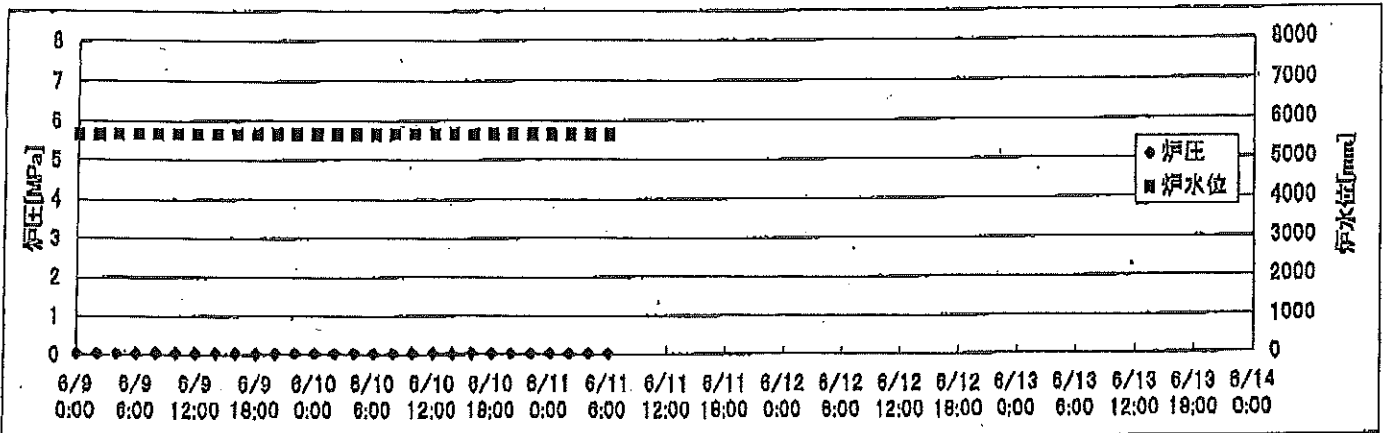


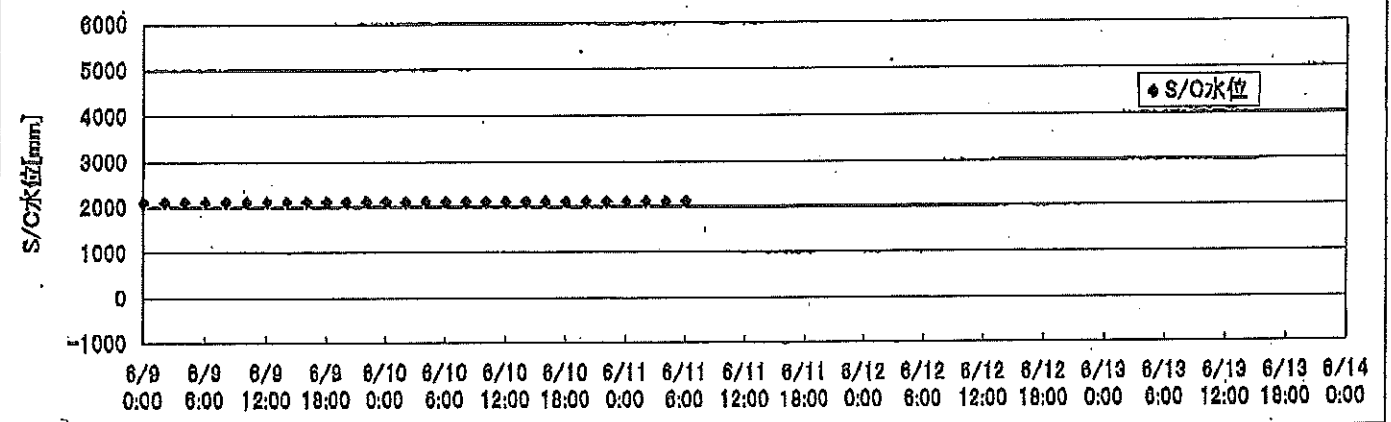
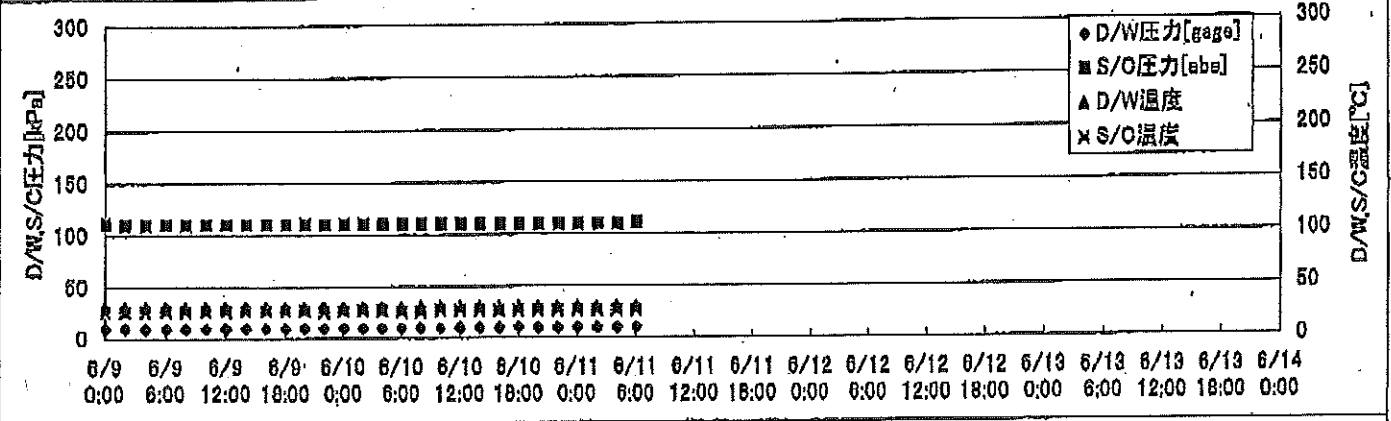
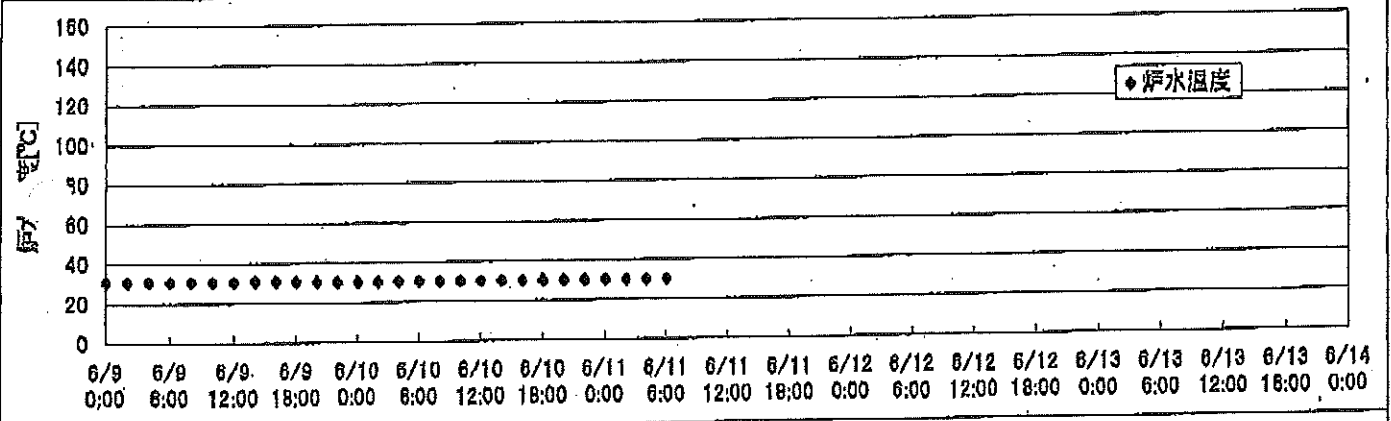
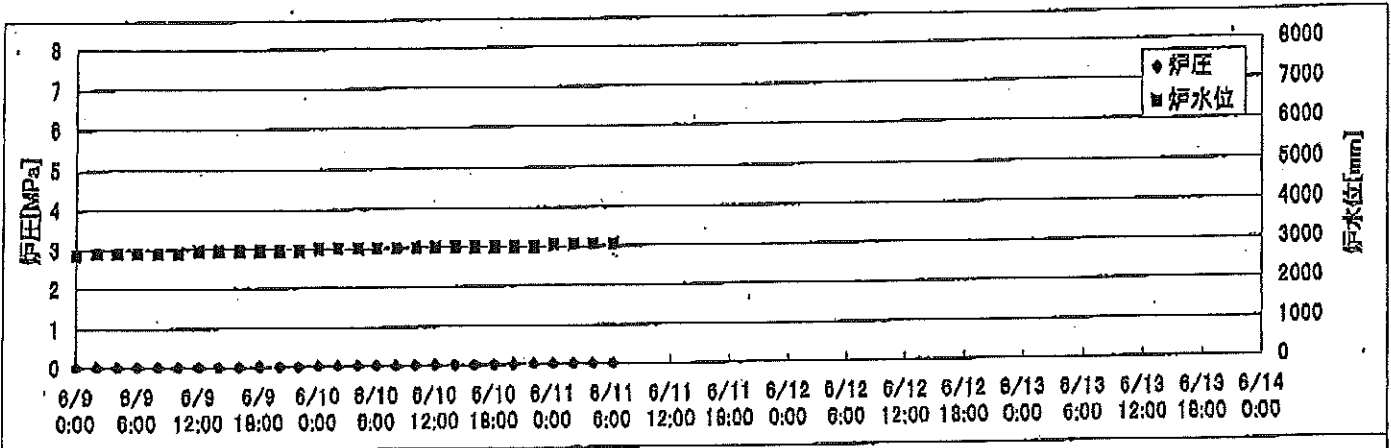
# 2F-1号機



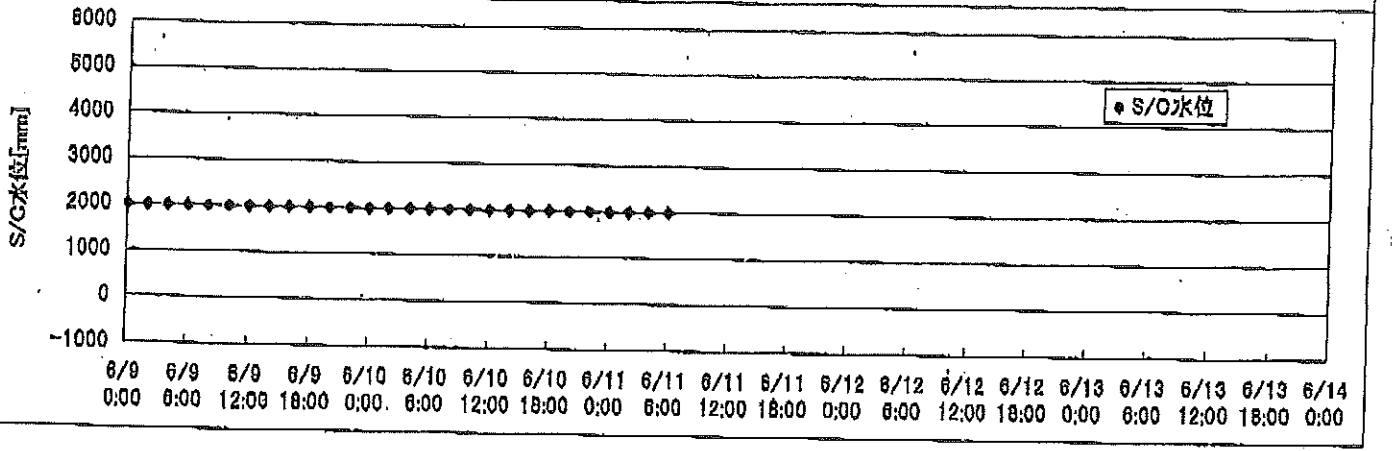
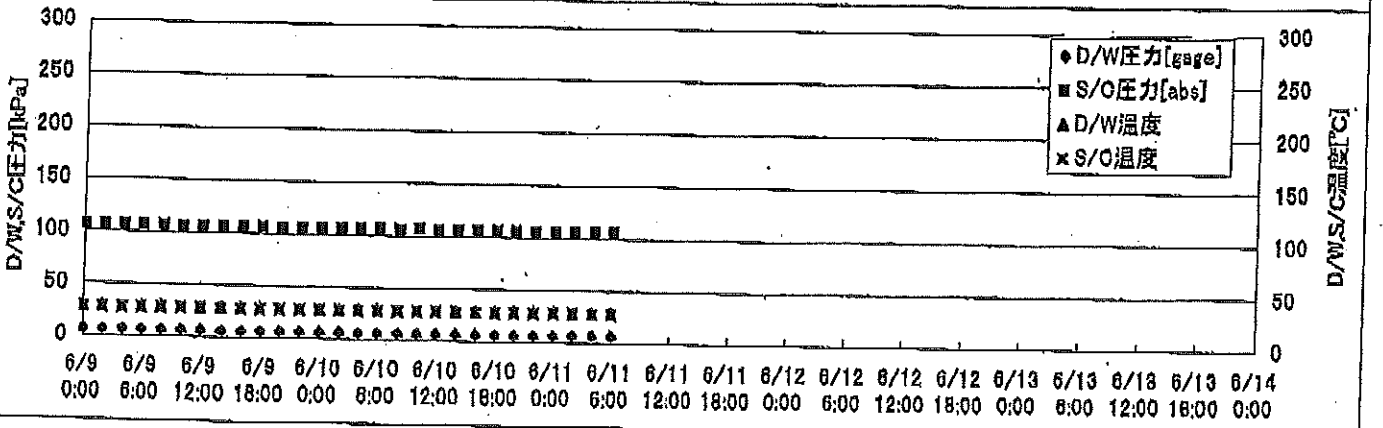
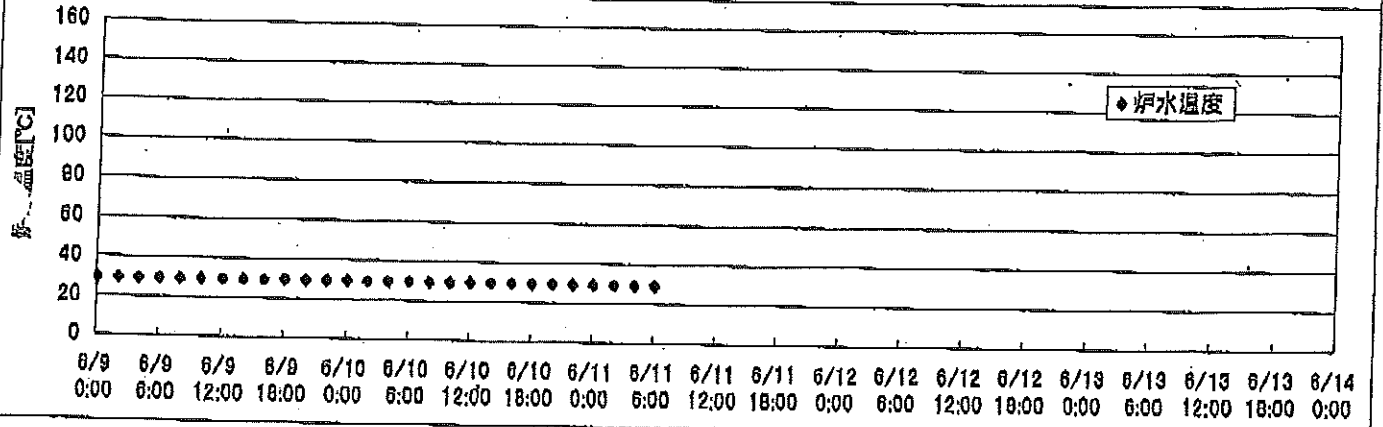
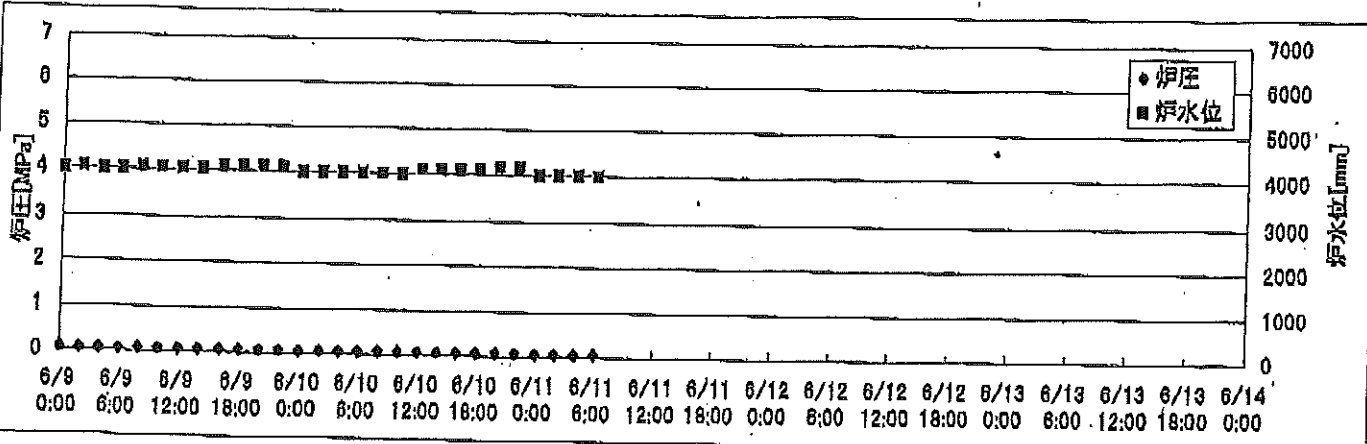
# 2F-2号機



2F-3号機



2F-4号機





# 2F-2号機

※燃料頂部(TAF)からの水位=炉水位+4200[mm]

時間	炉圧 [MPa (gage)]	炉水位 [mm] 停止時	炉水温度[°C]	D/W圧力 [kPa(gage)]	D/W温度 [°C]	S/C圧力 [kPa(abs)]	S/C水位 [mm]	S/C温度 [°C]
2011/6/9 0:00	0.03	5650						
2011/6/9 2:00	0.03	5650	24.2	7	26.2	107	1200	24
2011/6/9 4:00	0.03	5650	24.2	7	26.2	107	1200	24
2011/6/9 6:00	0.03	5650	24.2	7	26.2	107	1200	24
2011/6/9 8:00	0.04	5650	24.1	7	26.2	107	1200	24
2011/6/9 10:00	0.04	5650	24.1	7	26.2	107	1200	24
2011/6/9 12:00	0.03	5650	24.1	7	26.0	107	1200	24
2011/6/9 14:00	0.04	5650	24.1	7	26.0	107	1200	24
2011/6/9 16:00	0.04	5650	24.0	7	25.9	107	1200	23
2011/6/9 18:00	0.03	5650	24.1	7	26.0	107	1200	23
2011/6/9 20:00	0.03	5650	24.0	7	26.0	107	1200	24
2011/6/9 22:00	0.03	5650	24.0	7	26.0	107	1200	24
2011/6/10 0:00	0.03	5650	24.0	7	26.0	107	1200	24
2011/6/10 2:00	0.04	5650	24.0	7	26.2	107	1200	24
2011/6/10 4:00	0.04	5650	24.0	7	26.0	107	1200	24
2011/6/10 6:00	0.03	5650	24.0	7	26.0	107	1200	24
2011/6/10 8:00	0.03	5650	24.0	7	26.2	107	1200	24
2011/6/10 10:00	0.03	5650	24.0	7	26.2	107	1200	24
2011/6/10 12:00	0.03	5650	23.9	7	26.0	107	1200	24
2011/6/10 14:00	0.03	5650	23.9	7	25.9	107	1200	24
2011/6/10 16:00	0.04	5650	23.9	7	25.9	107	1200	23
2011/6/10 18:00	0.04	5650	23.9	7	25.9	107	1200	23
2011/6/10 20:00	0.03	5650	23.9	7	25.8	107	1200	23
2011/6/10 22:00	0.03	5650	23.9	7	25.9	107	1200	23
2011/6/11 0:00	0.03	5650	23.8	7	25.9	107	1200	23
2011/6/11 2:00	0.03	5650	23.8	7	25.9	107	1200	23
2011/6/11 4:00	0.03	5650	23.8	7	25.9	107	1200	23
2011/6/11 6:00	0.03	5650	23.8	7	25.9	107	1200	23
2011/6/11 8:00								
2011/6/11 10:00								
2011/6/11 12:00								
2011/6/11 14:00								
2011/6/11 16:00								
2011/6/11 18:00								
2011/6/11 20:00								
2011/6/11 22:00								
2011/6/12 0:00								

# 2F-3号機

※燃料頂部(TAF)からの水位=炉水位+4200[mm]

時間	炉圧 [MPa (gage)]	炉水位 [mm] 停止時	炉水温度[°C]	D/W圧力 [kPa(gage)]	D/W温度 [°C]	S/C圧力 [kPa(abs)]	S/C水位 [mm]	S/C温度 [°C]
2011/6/9 0:00	0.01	2850	30.9	10	30.6	111	2100	26
2011/6/9 2:00	0.01	2900	30.9	10	30.6	110	2100	26
2011/6/9 4:00	0.01	2900	30.9	10	30.6	110	2100	26
2011/6/9 6:00	0.01	2900	30.9	10	30.6	110	2100	27
2011/6/9 8:00	0.01	2900	30.9	10	30.5	110	2100	27
2011/6/9 10:00	0.01	2950	30.8	10	30.4	110	2100	27
2011/6/9 12:00	0.01	2950	30.9	10	30.6	110	2100	27
2011/6/9 14:00	0.01	2950	31.0	10	30.4	110	2100	27
2011/6/9 16:00	0.01	2950	30.8	10	30.5	110	2100	27
2011/6/9 18:00	0.01	2950	30.6	10	30.4	110	2100	27
2011/6/9 20:00	0.01	2950	30.5	10	30.4	110	2100	27
2011/6/9 22:00	0.01	3000	30.4	10	30.3	110	2100	26
2011/6/10 0:00	0.01	3000	30.4	10	30.5	110	2100	27
2011/6/10 2:00	0.01	3000	30.5	10	30.4	110	2100	27
2011/6/10 4:00	0.01	3000	30.4	10	30.4	110	2100	26
2011/6/10 6:00	0.01	3000	30.3	10	30.4	110	2100	26
2011/6/10 8:00	0.01	3000	30.3	10	30.4	110	2100	27
2011/6/10 10:00	0.01	3000	30.3	10	30.4	110	2100	27
2011/6/10 12:00	0.01	3000	30.2	10	30.4	110	2100	27
2011/6/10 14:00	0.01	3000	30.2	10	30.4	110	2100	27
2011/6/10 16:00	0.01	3000	30.2	11	30.4	110	2100	27
2011/6/10 18:00	0.01	3000	30.1	10	30.4	110	2100	27
2011/6/10 20:00	0.01	3050	30.1	10	30.3	110	2100	27
2011/6/10 22:00	0.01	3050	30.1	10	30.3	110	2100	27
2011/6/11 0:00	0.01	3050	30.1	10	30.3	110	2100	27
2011/6/11 2:00	0.01	3050	30.1	10	30.3	110	2100	27
2011/6/11 4:00	0.01	3050	30.1	10	30.3	110	2100	27
2011/6/11 6:00	0.01	3050	30.1	10	30.3	111	2100	27
2011/6/11 8:00								
2011/6/11 10:00								
2011/6/11 12:00								
2011/6/11 14:00								
2011/6/11 16:00								
2011/6/11 18:00								
2011/6/11 20:00								
2011/6/11 22:00								
2011/6/12 0:00								

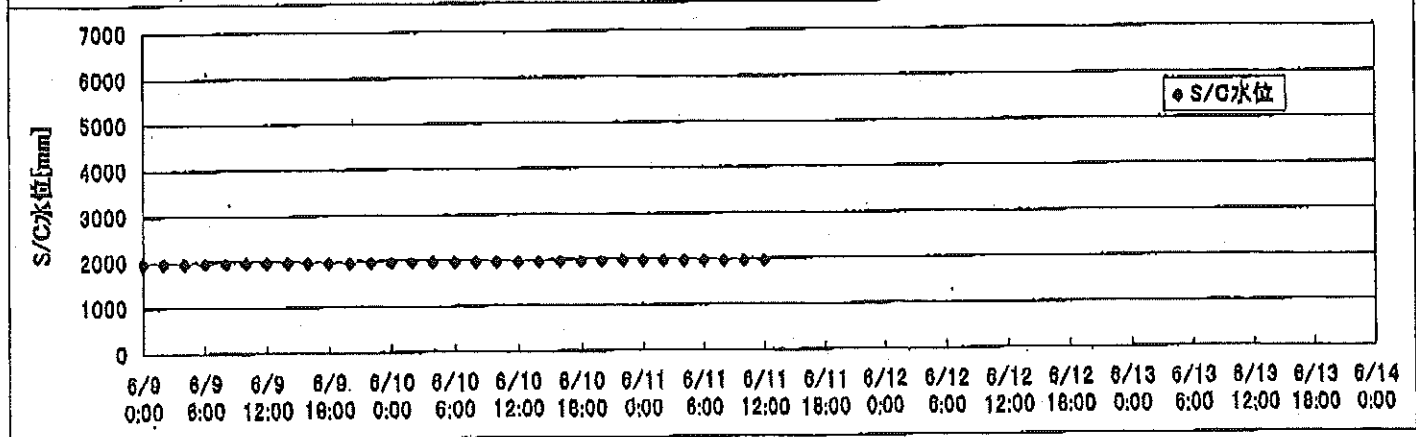
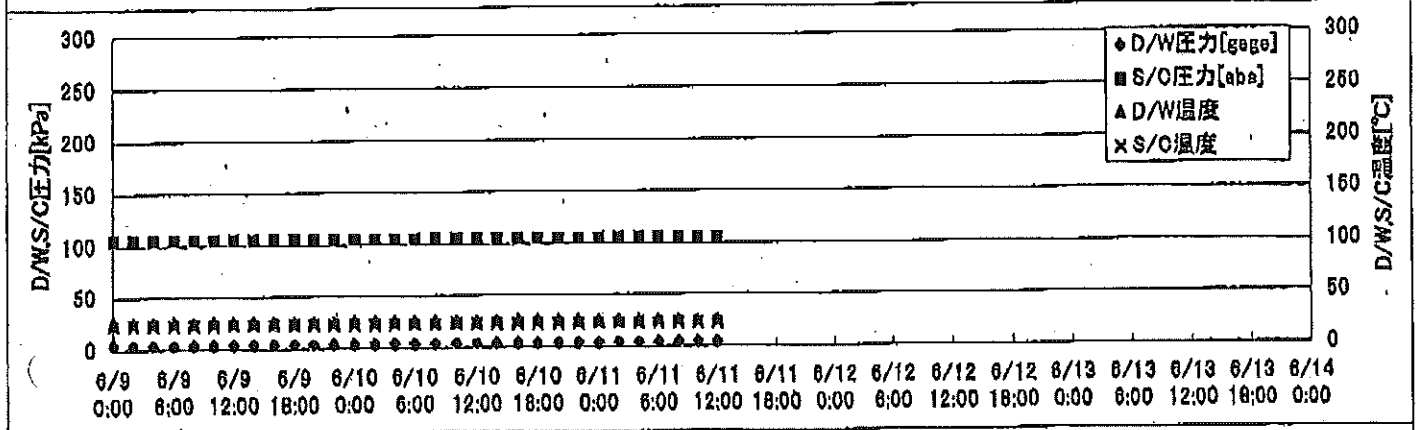
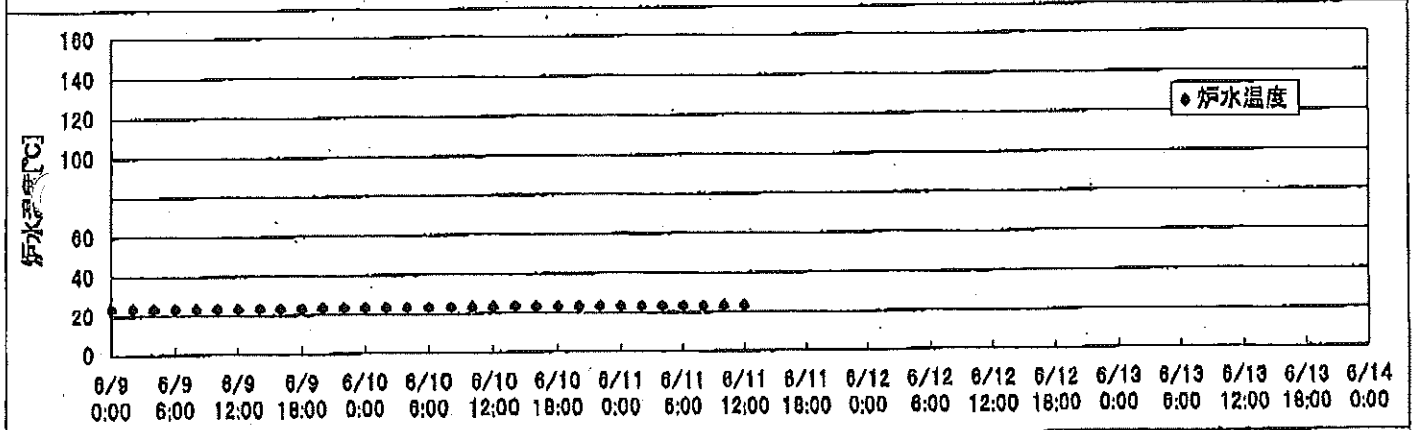
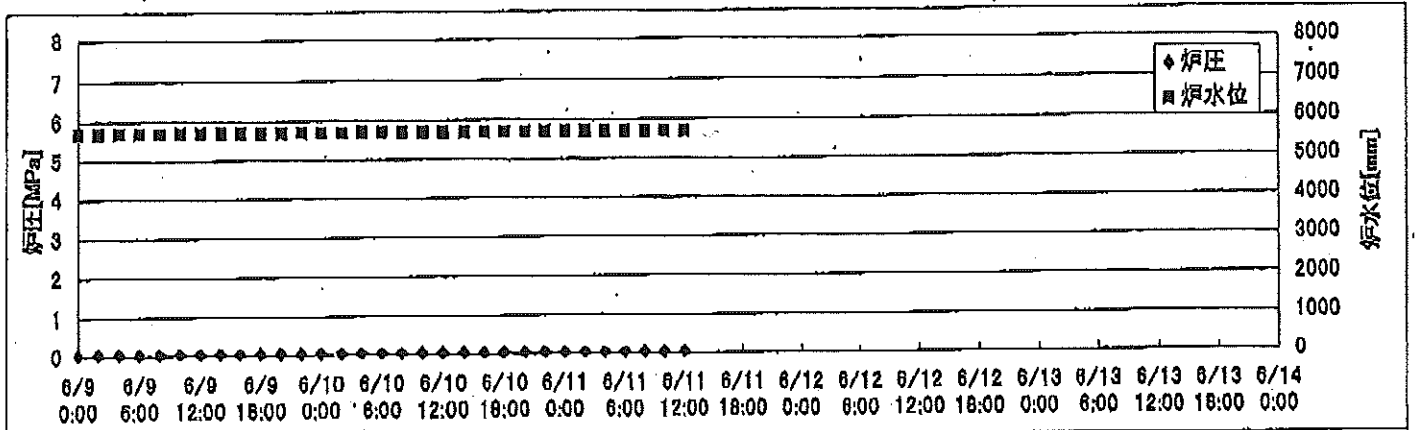
# 2F-4号機

※燃料頂部(TAF)からの水位=炉水位+4200[mm]

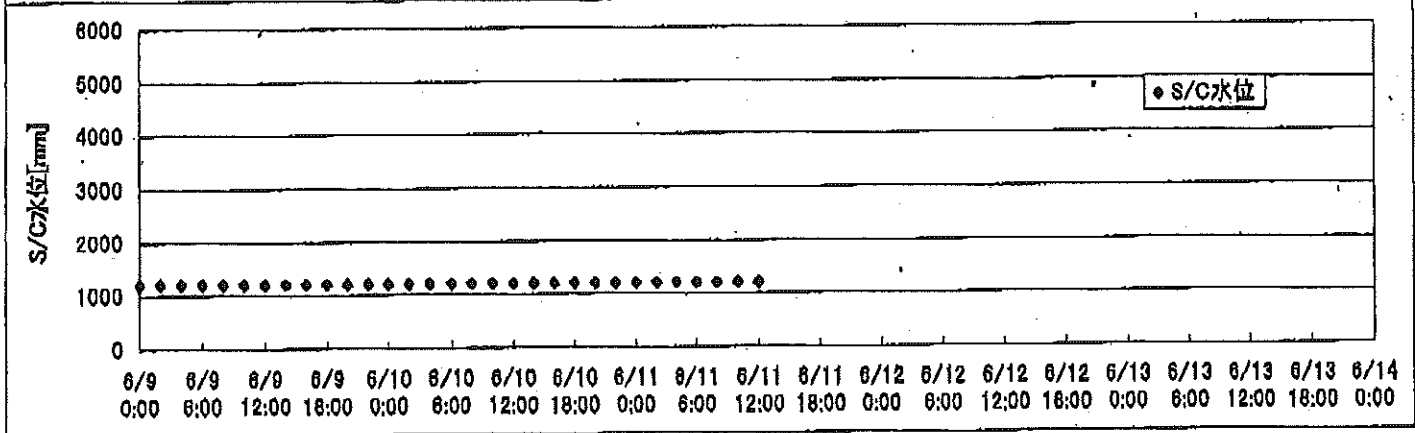
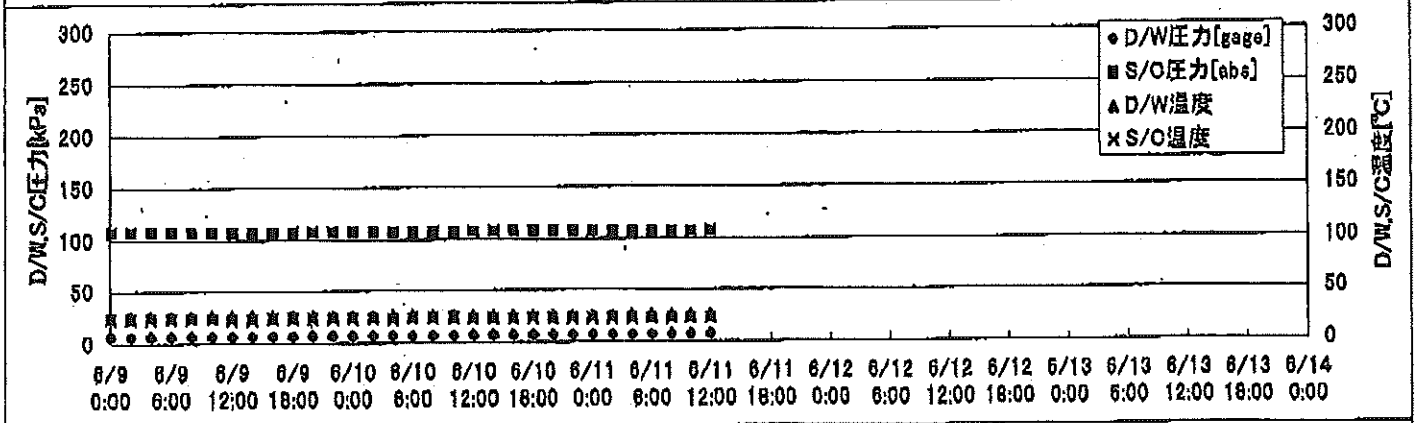
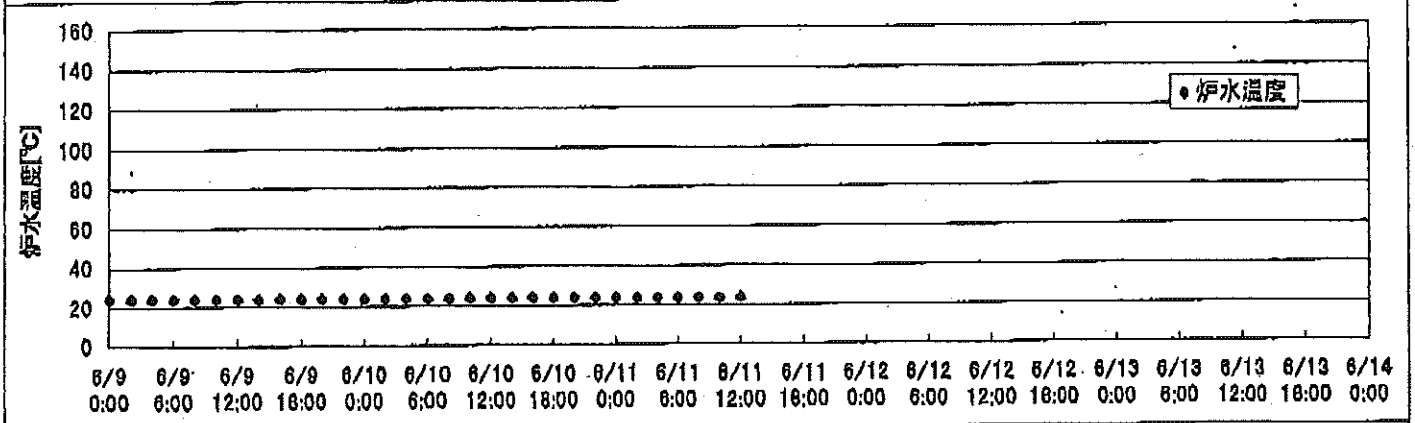
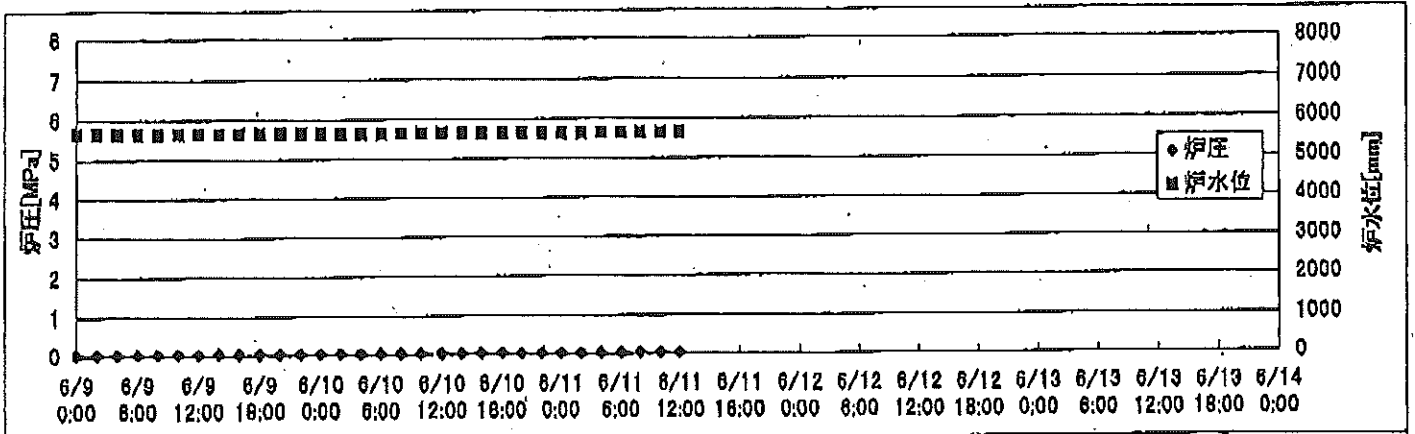
時間	炉圧 [MPa (gage)]	炉水位 [mm] 停止時	炉水温度[°C]	D/W圧力 [kPa(gage)]	D/W温度 [°C]	S/C圧力 [kPa(abs)]	S/C水位 [mm]	S/C温度 [°C]
2011/6/9 0:00	0.07	4000	29.5	6	29.0	106	2000	28
2011/6/9 2:00	0.06	4050	29.5	6	28.7	106	2000	28
2011/6/9 4:00	0.06	4000	29.5	6	28.7	106	2000	28
2011/6/9 6:00	0.06	4000	29.5	6	28.9	106	2000	28
2011/6/9 8:00	0.07	4050	29.6	6	29.2	106	2000	28
2011/6/9 10:00	0.07	4050	29.6	6	29.0	106	2000	28
2011/6/9 12:00	0.07	4050	29.6	6	28.7	106	2000	28
2011/6/9 14:00	0.07	4050	29.6	6	28.8	106	2000	28
2011/6/9 16:00	0.07	4100	29.7	6	28.7	106	2000	28
2011/6/9 18:00	0.07	4100	29.8	6	28.8	106	2000	28
2011/6/9 20:00	0.07	4100	29.8	6	28.7	106	2000	28
2011/6/9 22:00	0.07	4100	29.8	6	28.9	106	2000	28
2011/6/10 0:00	0.06	4000	29.8	6	28.7	106	2000	28
2011/6/10 2:00	0.07	4000	29.8	6	28.7	106	2000	28
2011/6/10 4:00	0.07	4000	29.8	6	28.9	106	2000	28
2011/6/10 6:00	0.07	4000	29.8	6	28.9	106	2000	28
2011/6/10 8:00	0.07	4000	29.7	6	29.0	106	2000	28
2011/6/10 10:00	0.07	4000	29.7	6	29.0	107	2000	28
2011/6/10 12:00	0.07	4100	29.7	6	28.8	106	2000	28
2011/6/10 14:00	0.07	4100	29.7	6	28.9	106	2000	28
2011/6/10 16:00	0.07	4100	29.7	6	28.9	106	2000	28
2011/6/10 18:00	0.07	4100	29.6	6	29.0	106	2000	28
2011/6/10 20:00	0.07	4150	29.6	6	29.0	106	2000	28
2011/6/10 22:00	0.07	4150	29.5	6	29.1	106	2000	28
2011/6/11 0:00	0.06	4000	29.5	6	29.1	106	2000	28
2011/6/11 2:00	0.06	4000	29.4	7	28.9	106	2000	28
2011/6/11 4:00	0.06	4000	29.4	7	28.9	106	2000	28
<b>2011/6/11 6:00</b>	<b>0.07</b>	<b>4000</b>	<b>29.4</b>	<b>7</b>	<b>29.1</b>	<b>106</b>	<b>2000</b>	<b>28</b>
2011/6/11 8:00								
2011/6/11 10:00								
2011/6/11 12:00								
2011/6/11 14:00								
2011/6/11 16:00								
2011/6/11 18:00								
2011/6/11 20:00								
2011/6/11 22:00								
2011/6/12 0:00								



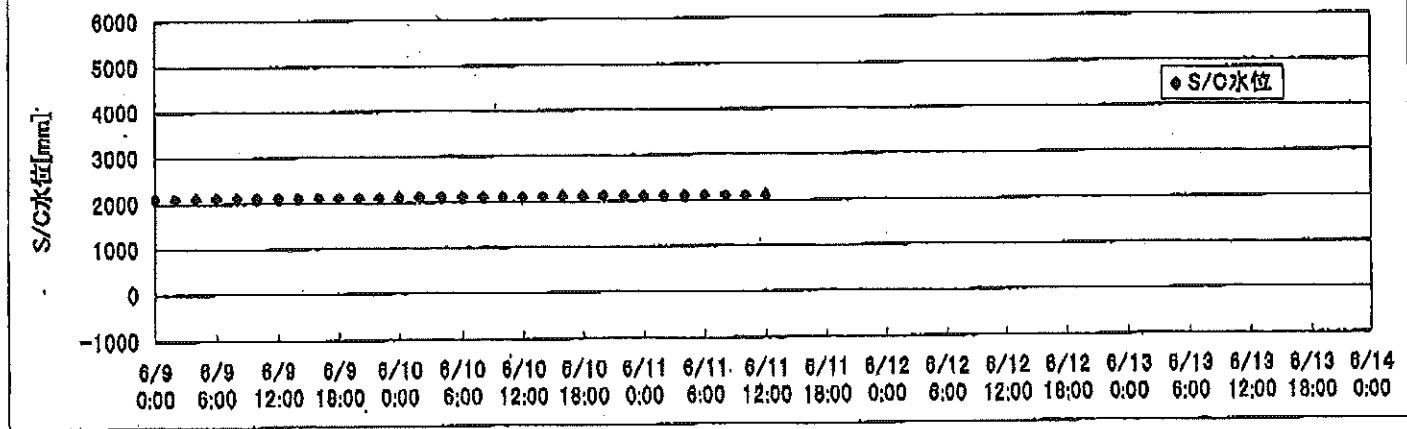
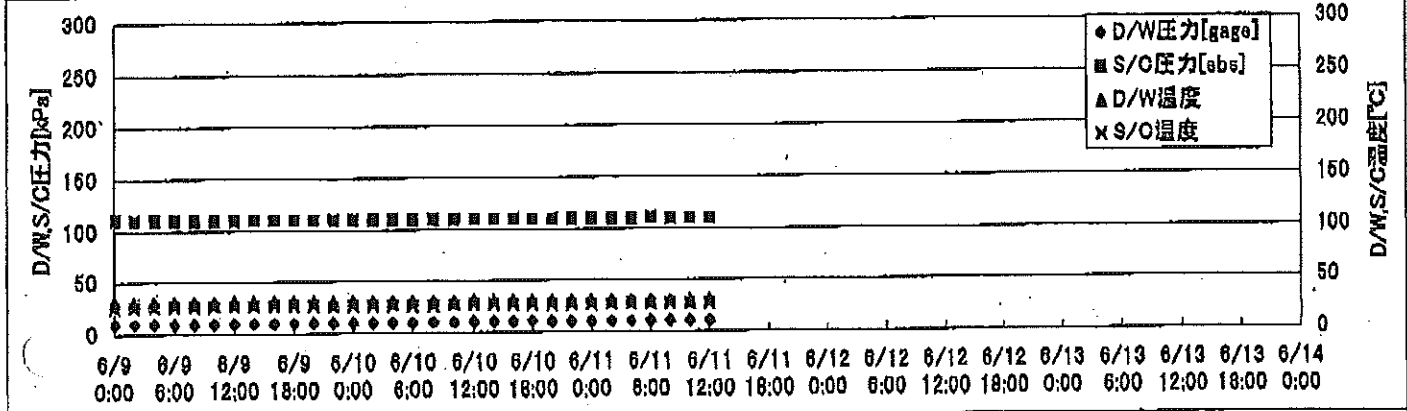
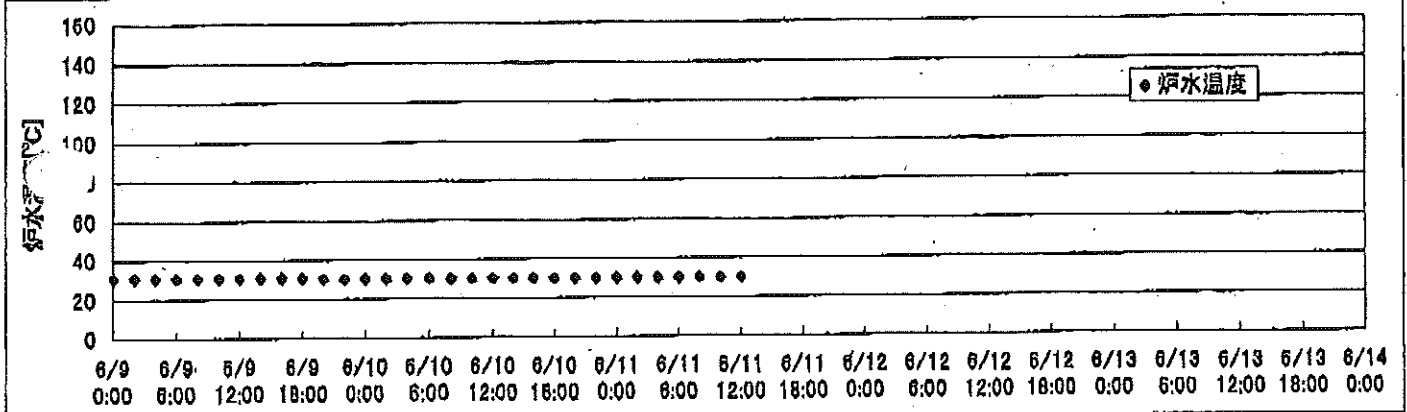
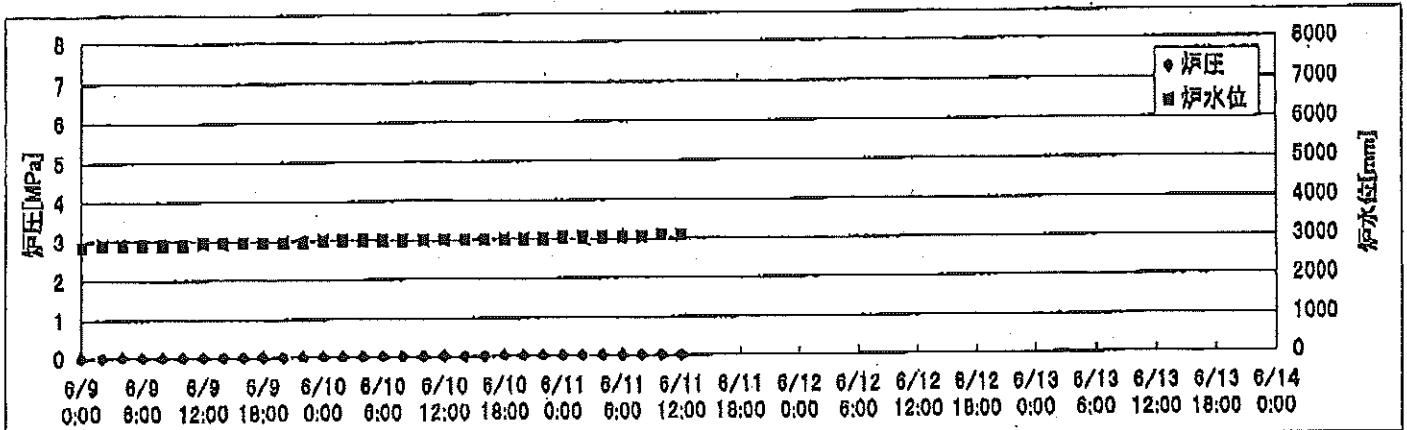
2F-1号機



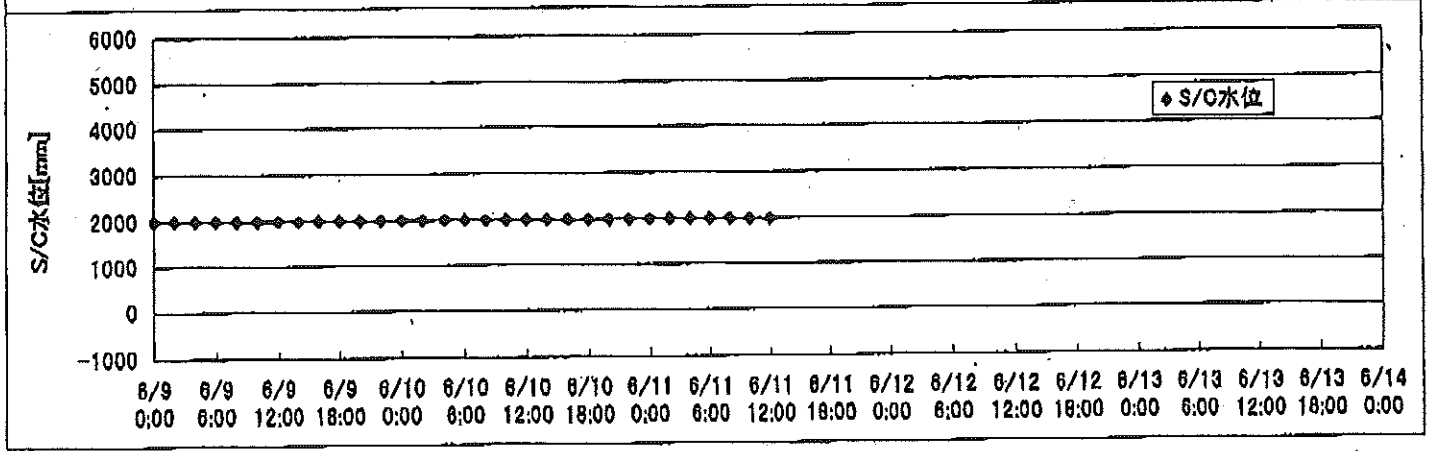
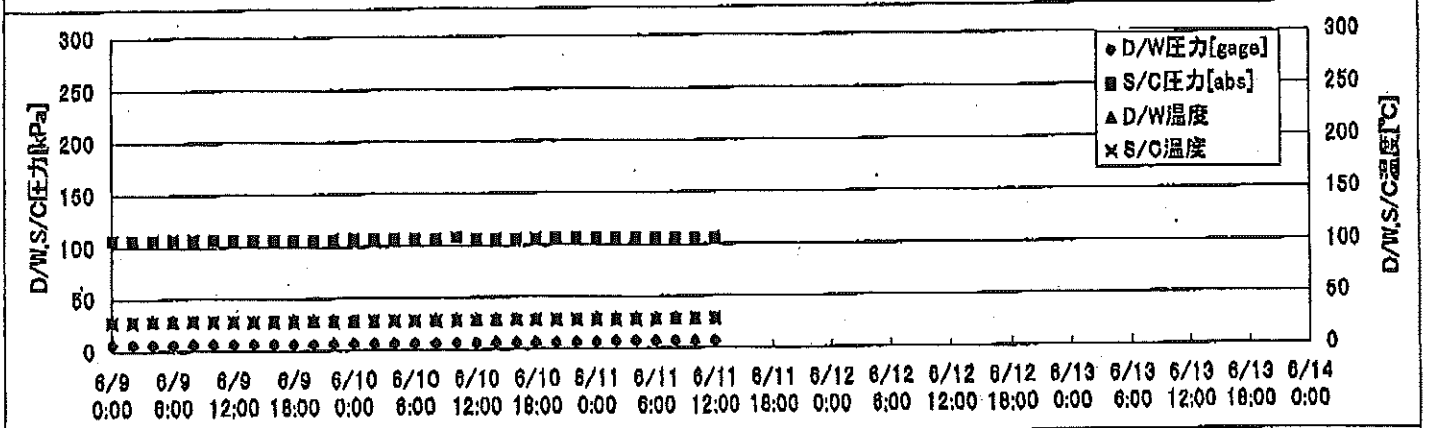
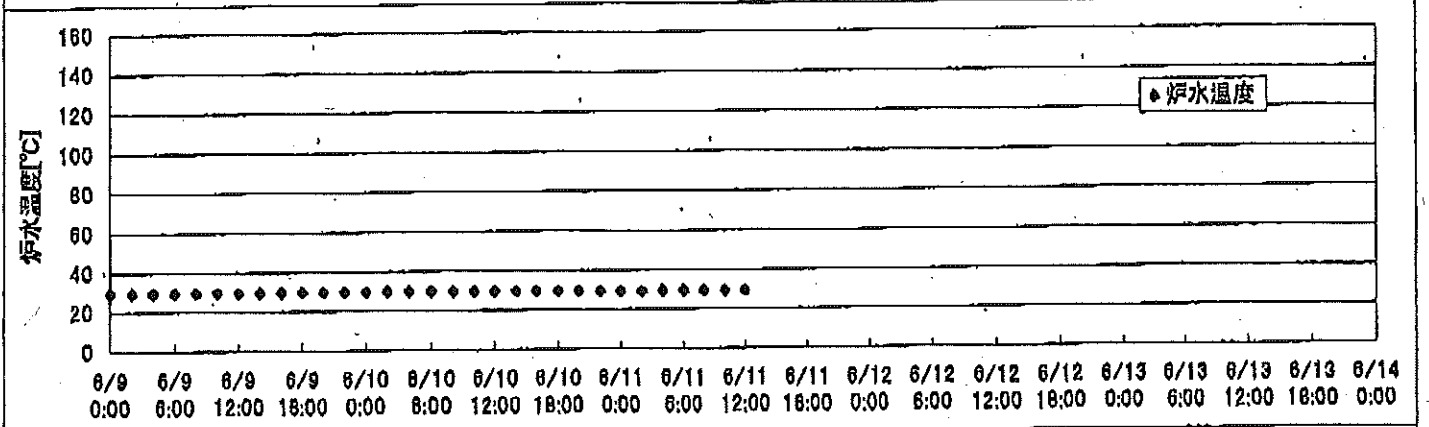
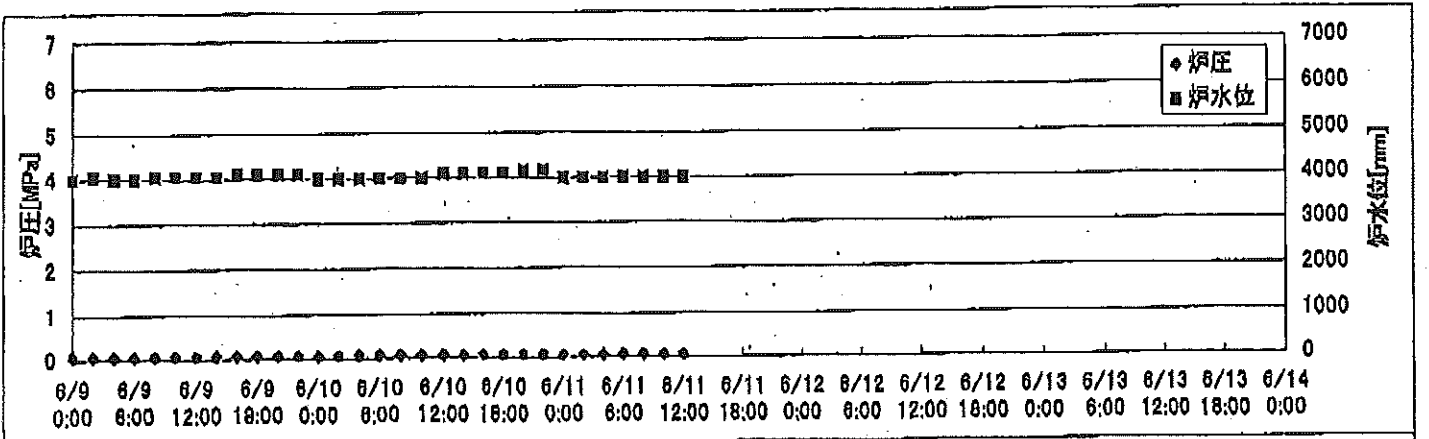
2F-2号機



2F-3号機



2F-4号機



# 2F-1号機

※燃料頂部(TAF)からの水位=炉水、 $\pm 4200$ [mm]

時間	炉圧 [MPa (gage)]	炉水位 [mm] 停止時	炉水温度[°C]	D/W圧力 [kPa(gage)]	D/W温度 [°C]	S/C圧力 [kPa(abs)]	S/C水位 [mm]	S/C温度 [°C]
2011/6/9 12:00	0.05	5700	23.4	4	25.8	105	1959	23
2011/6/9 14:00	0.05	5700	23.5	4	25.7	105	1960	23
2011/6/9 16:00	0.05	5700	23.4	4	25.7	105	1960	23
2011/6/9 18:00	0.05	5700	23.4	4	25.8	105	1958	23
2011/6/9 20:00	0.05	5700	23.5	4	25.8	105	1958	23
2011/6/9 22:00	0.05	5700	23.5	4	25.8	105	1959	23
2011/6/10 0:00	0.05	5700	23.5	4	25.7	105	1959	23
2011/6/10 2:00	0.05	5700	23.5	4	25.8	105	1960	23
2011/6/10 4:00	0.05	5700	23.5	4	25.8	105	1960	23
2011/6/10 6:00	0.05	5700	23.5	4	25.8	105	1959	23
2011/6/10 8:00	0.05	5700	23.5	4	25.8	105	1959	23
2011/6/10 10:00	0.05	5700	23.5	4	25.8	105	1960	23
2011/6/10 12:00	0.05	5700	23.4	4	25.8	105	1959	23
2011/6/10 14:00	0.05	5700	23.5	4	25.8	105	1959	23
2011/6/10 16:00	0.05	5700	23.4	4	25.8	105	1958	23
2011/6/10 18:00	0.05	5700	23.4	4	25.8	105	1958	23
2011/6/10 20:00	0.05	5700	23.4	4	25.8	105	1958	23
2011/6/10 22:00	0.05	5700	23.4	4	25.8	105	1958	23
2011/6/11 0:00	0.05	5700	23.4	4	25.8	105	1958	23
2011/6/11 2:00	0.05	5700	23.4	4	25.8	105	1958	23
2011/6/11 4:00	0.05	5700	23.4	4	25.8	105	1958	23
2011/6/11 6:00	0.05	5700	23.4	4	25.8	105	1958	23
2011/6/11 8:00	0.05	5700	23.4	4	25.8	105	1958	23
2011/6/11 10:00	0.05	5700	23.4	4	25.8	105	1958	23
<b>2011/6/11 12:00</b>	<b>0.05</b>	<b>5700</b>	<b>23.4</b>	<b>5</b>	<b>25.8</b>	<b>105</b>	<b>1958</b>	<b>23</b>
2011/6/11 14:00								
2011/6/11 16:00								
2011/6/11 18:00								
2011/6/11 20:00								
2011/6/11 22:00								
2011/6/12 0:00								
2011/6/12 2:00								
2011/6/12 4:00								
2011/6/12 6:00								
2011/6/12 8:00								
2011/6/12 10:00								
2011/6/12 12:00								

# 2F-2号機

※燃料頂部(TAF)からの水位=炉水位+4200[mm]

時間	炉圧 [MPa (gage)]	炉水位 [mm] 停止時	炉水温度[°C]	D/W圧力 [kPa(gage)]	D/W温度 [°C]	S/C圧力 [kPa(abs)]	S/C水位 [mm]	S/C温度 [°C]
2011/6/9 12:00	0.03	5650	24.1	7	26.0	107	1200	23
2011/6/9 14:00	0.04	5650	24.0	7	25.9	107	1200	23
2011/6/9 16:00	0.04	5650	24.1	7	26.0	107	1200	24
2011/6/9 18:00	0.03	5650	24.0	7	26.0	107	1200	24
2011/6/9 20:00	0.03	5650	24.0	7	26.0	107	1200	24
2011/6/9 22:00	0.03	5650	24.0	7	26.0	107	1200	24
2011/6/10 0:00	0.03	5650	24.0	7	26.2	107	1200	24
2011/6/10 2:00	0.04	5650	24.0	7	26.0	107	1200	24
2011/6/10 4:00	0.04	5650	24.0	7	26.0	107	1200	23
2011/6/10 6:00	0.03	5650	24.0	7	26.2	107	1200	24
2011/6/10 8:00	0.03	5650	24.0	7	26.2	107	1200	24
2011/6/10 10:00	0.03	5650	23.9	7	26.0	107	1200	24
2011/6/10 12:00	0.03	5650	23.9	7	25.9	107	1200	23
2011/6/10 14:00	0.03	5650	23.9	7	25.9	107	1200	23
2011/6/10 16:00	0.04	5650	23.9	7	25.9	107	1200	23
2011/6/10 18:00	0.04	5650	23.9	7	25.8	107	1200	23
2011/6/10 20:00	0.03	5650	23.9	7	25.9	107	1200	23
2011/6/10 22:00	0.03	5650	23.8	7	25.9	107	1200	23
2011/6/11 0:00	0.03	5650	23.8	7	25.9	107	1200	23
2011/6/11 2:00	0.03	5650	23.8	7	25.9	107	1200	23
2011/6/11 4:00	0.03	5650	23.8	7	25.9	107	1200	23
2011/6/11 6:00	0.03	5650	23.8	7	25.9	107	1200	23
2011/6/11 8:00	0.04	5650	23.8	7	25.9	107	1200	23
2011/6/11 10:00	0.04	5650	23.8	7	25.9	107	1200	23
2011/6/11 12:00	0.04	5650	23.8	7	25.9	107	1200	23
2011/6/11 14:00								
2011/6/11 16:00								
2011/6/11 18:00								
2011/6/11 20:00								
2011/6/11 22:00								
2011/6/12 0:00								
2011/6/12 2:00								
2011/6/12 4:00								
2011/6/12 6:00								
2011/6/12 8:00								
2011/6/12 10:00								
2011/6/12 12:00								

## 2F-3号機

※燃料頂部(TAF)からの水位=炉水位+4200[mm]

時間	炉圧 [MPa (gage)]	炉水位 [mm] 停止時	炉水温度[°C]	D/W圧力 [kPa(gage)]	D/W温度 [°C]	S/C圧力 [kPa(abs)]	S/C水位 [mm]	S/C温度 [°C]
2011/6/9 12:00	0.01	2950	30.8	10	30.6	110	2100	27
2011/6/9 14:00	0.01	2950	30.9	10	30.6	110	2100	27
2011/6/9 16:00	0.01	2950	31.0	10	30.4	110	2100	27
2011/6/9 18:00	0.01	2950	30.8	10	30.5	110	2100	27
2011/6/9 20:00	0.01	2950	30.6	10	30.4	110	2100	27
2011/6/9 22:00	0.01	2950	30.5	10	30.4	110	2100	26
2011/6/10 0:00	0.01	3000	30.4	10	30.3	110	2100	27
2011/6/10 2:00	0.01	3000	30.4	10	30.5	110	2100	27
2011/6/10 4:00	0.01	3000	30.5	10	30.4	110	2100	27
2011/6/10 6:00	0.01	3000	30.4	10	30.4	110	2100	26
2011/6/10 8:00	0.01	3000	30.3	10	30.4	110	2100	26
2011/6/10 10:00	0.01	3000	30.3	10	30.4	110	2100	27
2011/6/10 12:00	0.01	3000	30.3	10	30.4	110	2100	27
2011/6/10 14:00	0.01	3000	30.2	10	30.4	110	2100	27
2011/6/10 16:00	0.01	3000	30.2	10	30.4	110	2100	27
2011/6/10 18:00	0.01	3000	30.2	11	30.4	110	2100	27
2011/6/10 20:00	0.01	3000	30.2	10	30.4	110	2100	27
2011/6/10 22:00	0.01	3000	30.1	10	30.4	110	2100	27
2011/6/11 0:00	0.01	3050	30.1	10	30.3	110	2100	27
2011/6/11 2:00	0.01	3050	30.1	10	30.3	110	2100	27
2011/6/11 4:00	0.01	3050	30.1	10	30.3	110	2100	27
2011/6/11 6:00	0.01	3050	30.1	10	30.3	111	2100	27
2011/6/11 8:00	0.01	3050	30.1	10	30.2	110	2100	27
2011/6/11 10:00	0.02	3100	30.1	11	30.3	110	2100	27
<b>2011/6/11 12:00</b>	<b>0.02</b>	<b>3100</b>	<b>30.2</b>	<b>11</b>	<b>30.3</b>	<b>110</b>	<b>2100</b>	<b>27</b>
2011/6/11 14:00								
2011/6/11 16:00								
2011/6/11 18:00								
2011/6/11 20:00								
2011/6/11 22:00								
2011/6/12 0:00								
2011/6/12 2:00								
2011/6/12 4:00								
2011/6/12 6:00								
2011/6/12 8:00								
2011/6/12 10:00								
2011/6/12 12:00								

# 2F-4号機

※燃料頂部(TAF)からの水位=炉水位+4200[mm]

時間	炉圧 [MPa (gage)]	炉水位 [mm] 停止時	炉水温度[°C]	D/W圧力 [kPa(gage)]	D/W温度 [°C]	S/C圧力 [kPa(abs)]	S/C水位 [mm]	S/C温度 [°C]
2011/6/9 12:00	0.07	4050	29.6	6	28.7	106	2000	28
2011/6/9 14:00	0.07	4050	29.6	6	28.8	106	2000	28
2011/6/9 16:00	0.07	4100	29.7	6	28.7	106	2000	28
2011/6/9 18:00	0.07	4100	29.8	6	28.8	106	2000	28
2011/6/9 20:00	0.07	4100	29.8	6	28.7	106	2000	28
2011/6/9 22:00	0.07	4100	29.8	6	28.9	106	2000	28
2011/6/10 0:00	0.06	4000	29.8	6	28.7	106	2000	28
2011/6/10 2:00	0.07	4000	29.8	6	28.7	106	2000	28
2011/6/10 4:00	0.07	4000	29.8	6	28.9	106	2000	28
2011/6/10 6:00	0.07	4000	29.8	6	28.9	106	2000	28
2011/6/10 8:00	0.07	4000	29.7	6	29.0	106	2000	28
2011/6/10 10:00	0.07	4000	29.7	6	29.0	107	2000	28
2011/6/10 12:00	0.07	4100	29.7	6	28.8	106	2000	28
2011/6/10 14:00	0.07	4100	29.7	6	28.9	106	2000	28
2011/6/10 16:00	0.07	4100	29.7	6	28.9	106	2000	28
2011/6/10 18:00	0.07	4100	29.6	6	29.0	106	2000	28
2011/6/10 20:00	0.07	4150	29.6	6	29.0	106	2000	28
2011/6/10 22:00	0.07	4150	29.5	6	29.1	106	2000	28
2011/6/11 0:00	0.06	4000	29.5	6	29.1	106	2000	28
2011/6/11 2:00	0.06	4000	29.4	7	28.9	106	2000	28
2011/6/11 4:00	0.06	4000	29.4	7	28.9	106	2000	28
2011/6/11 6:00	0.07	4000	29.4	7	29.1	106	2000	28
2011/6/11 8:00	0.07	4000	29.4	7	29.1	106	2000	28
2011/6/11 10:00	0.07	4000	29.5	7	29.0	106	2000	28
2011/6/11 12:00	0.07	4000	29.5	7	29.0	106	2000	28
2011/6/11 14:00								
2011/6/11 16:00								
2011/6/11 18:00								
2011/6/11 20:00								
2011/6/11 22:00								
2011/6/12 0:00								
2011/6/12 2:00								
2011/6/12 4:00								
2011/6/12 6:00								
2011/6/12 8:00								
2011/6/12 10:00								
2011/6/12 12:00								