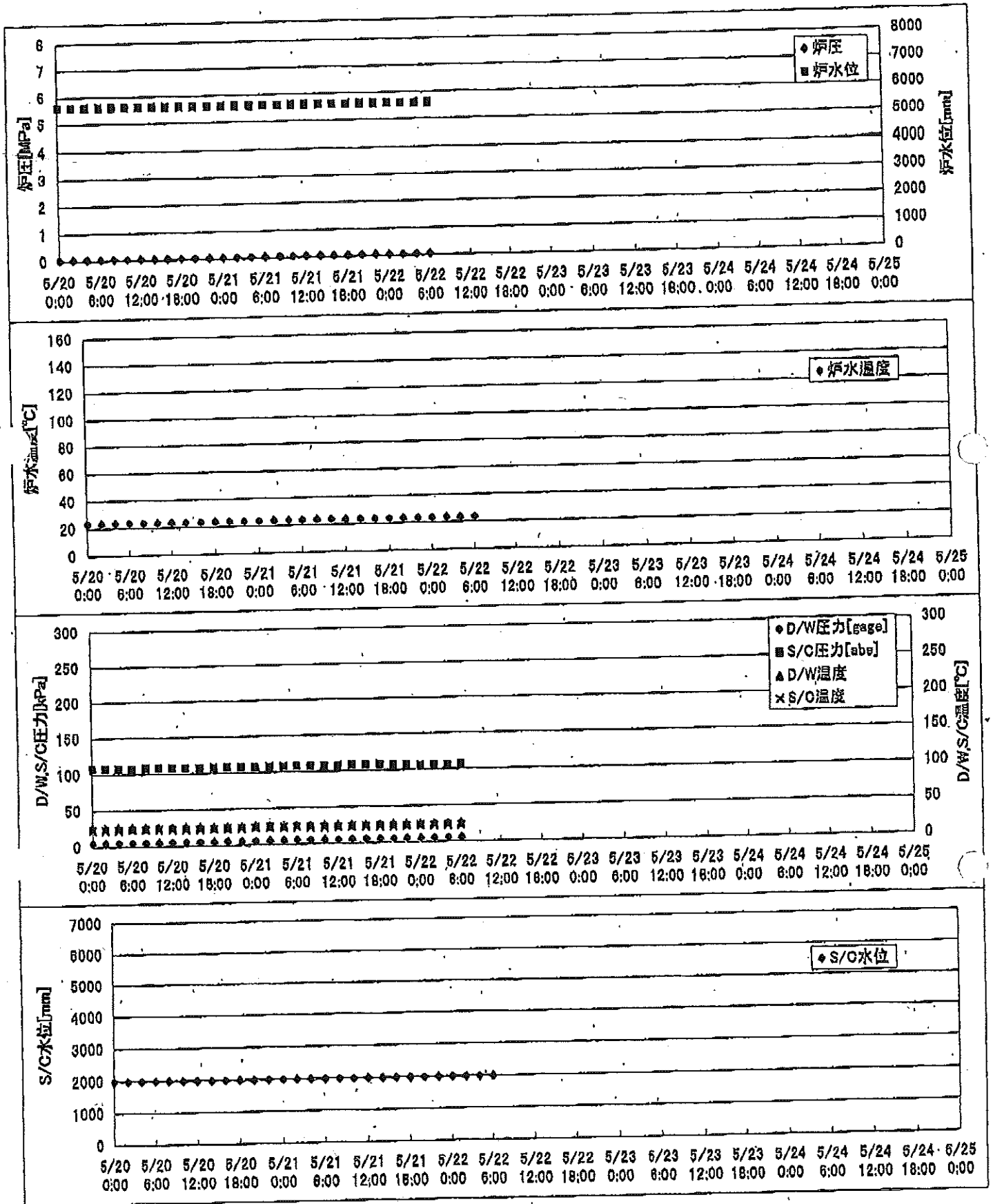
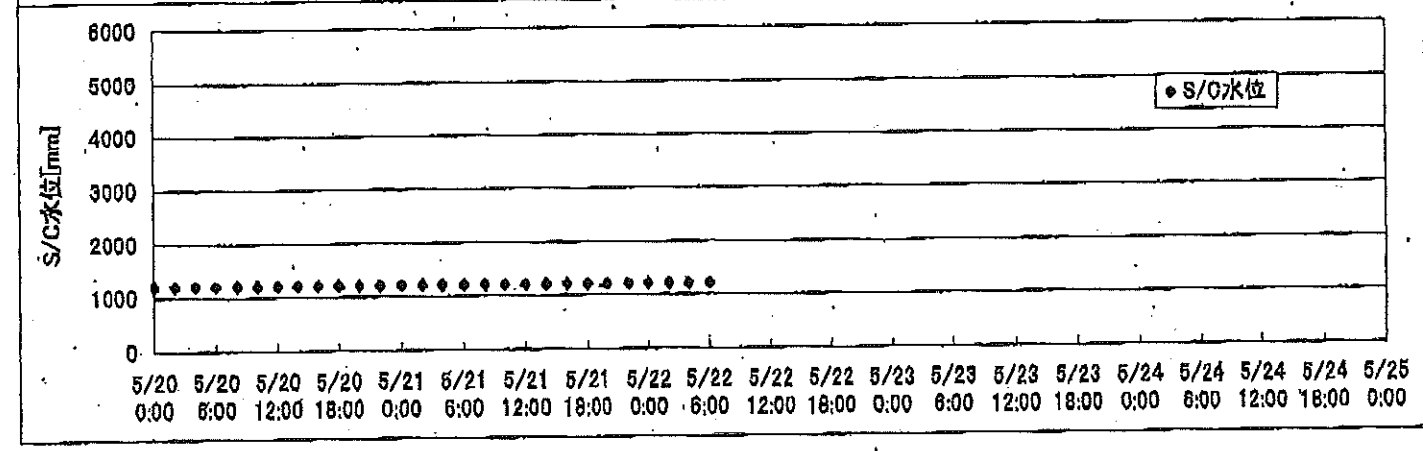
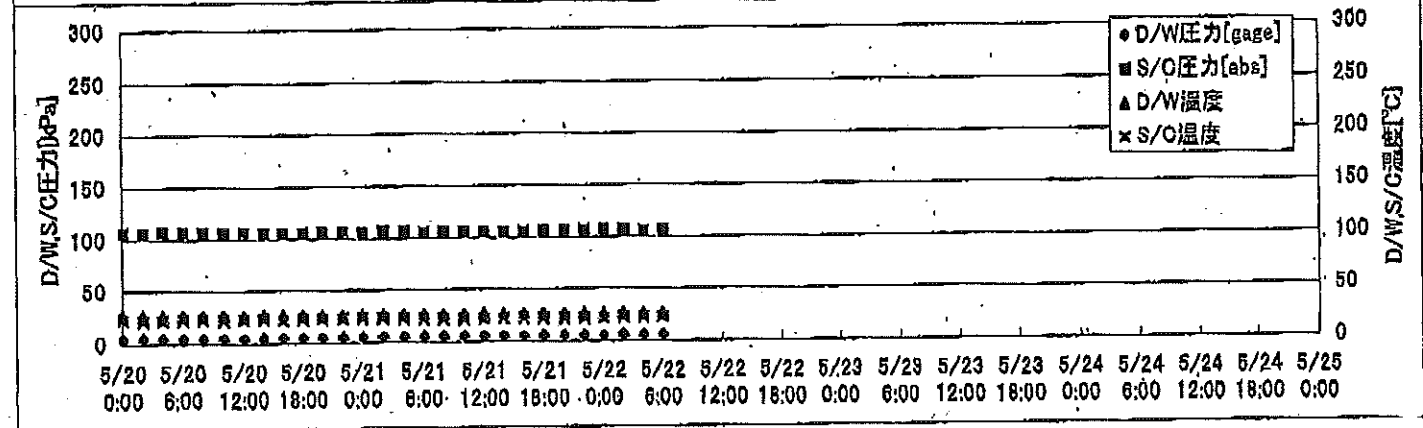
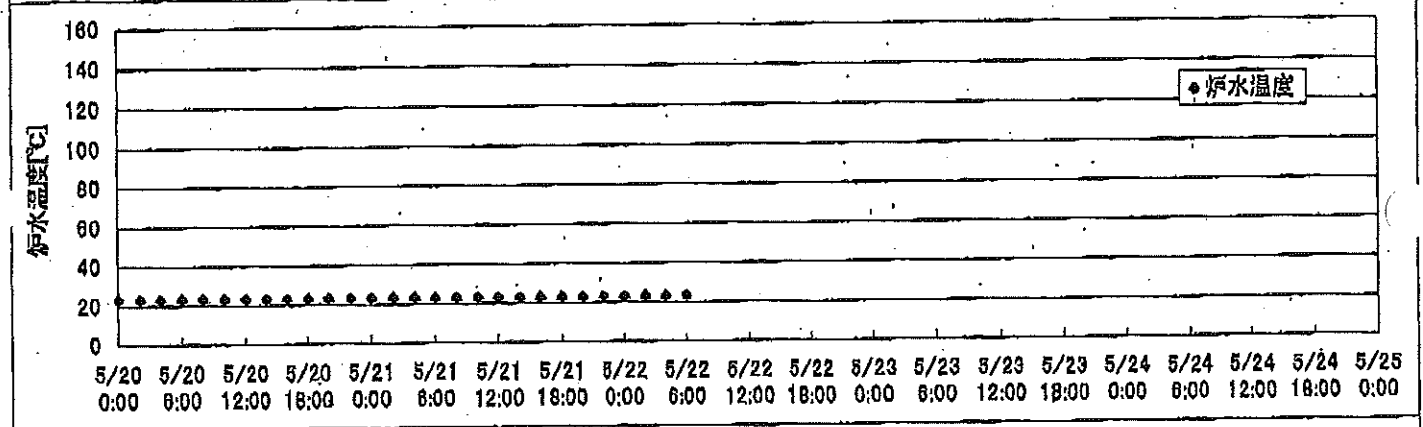
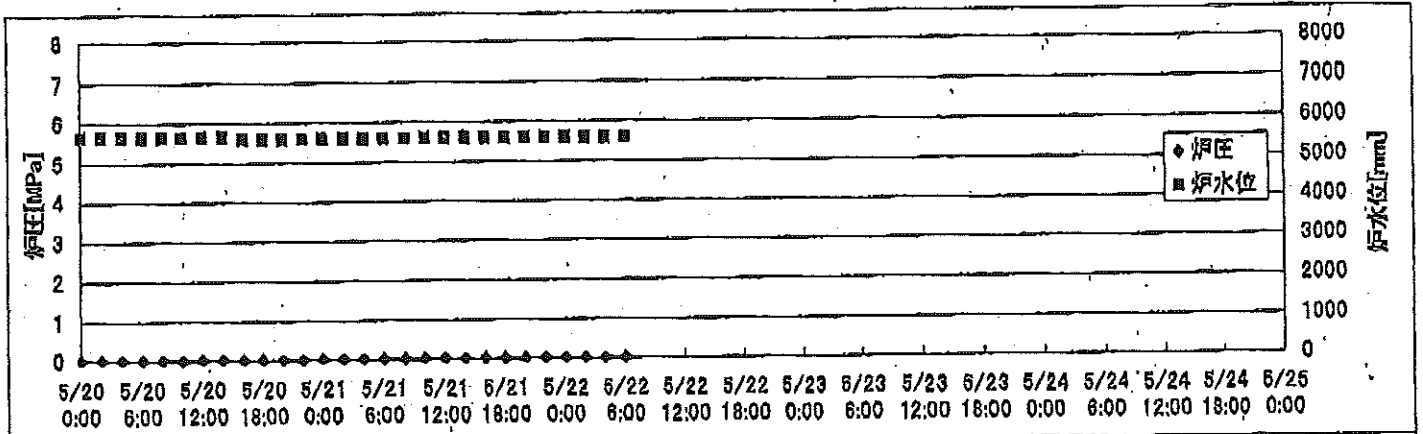


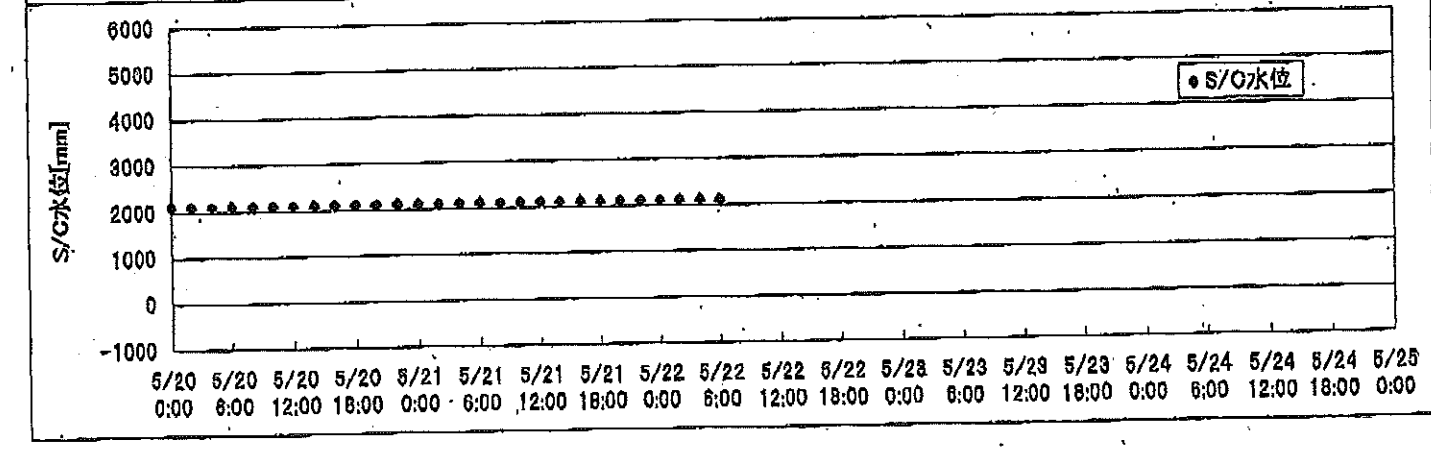
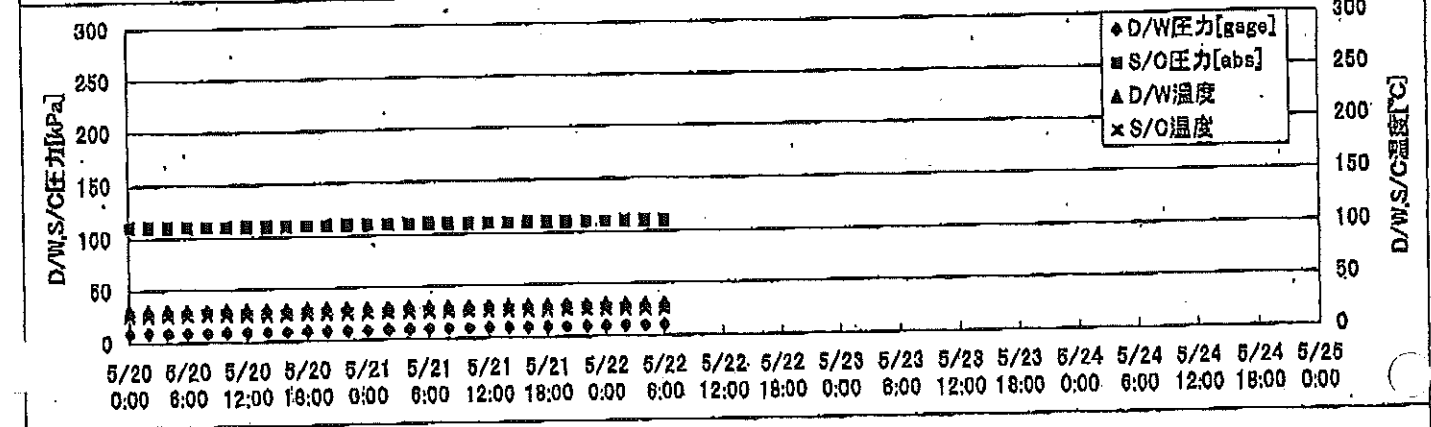
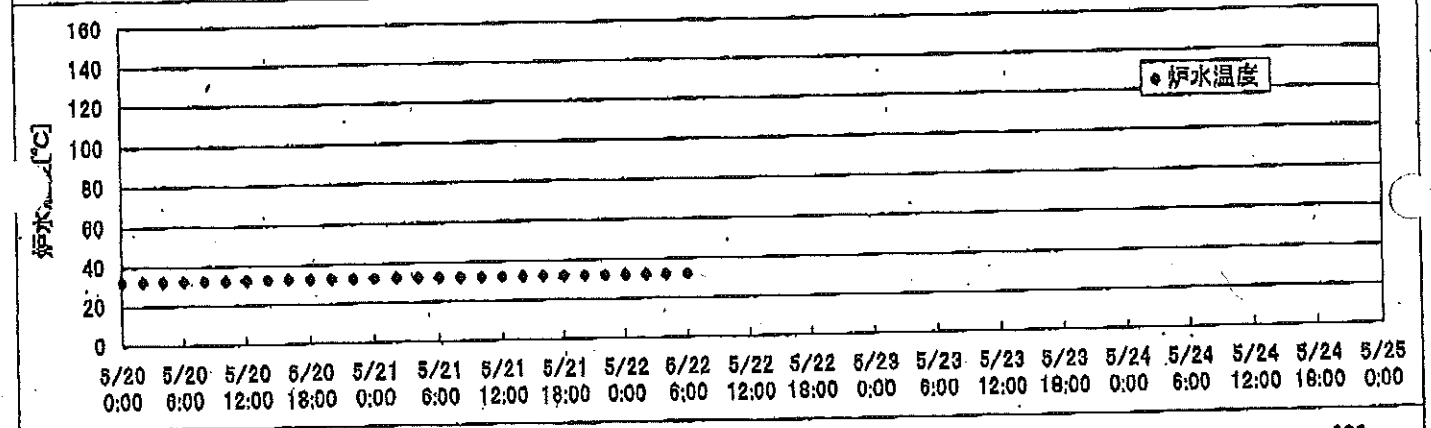
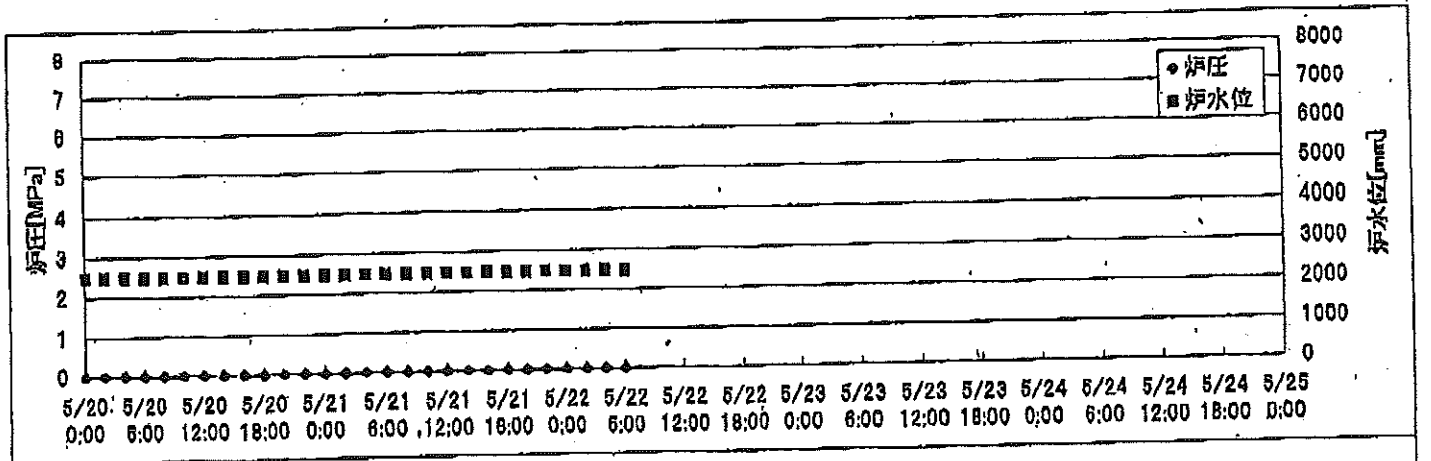
2F-1号機



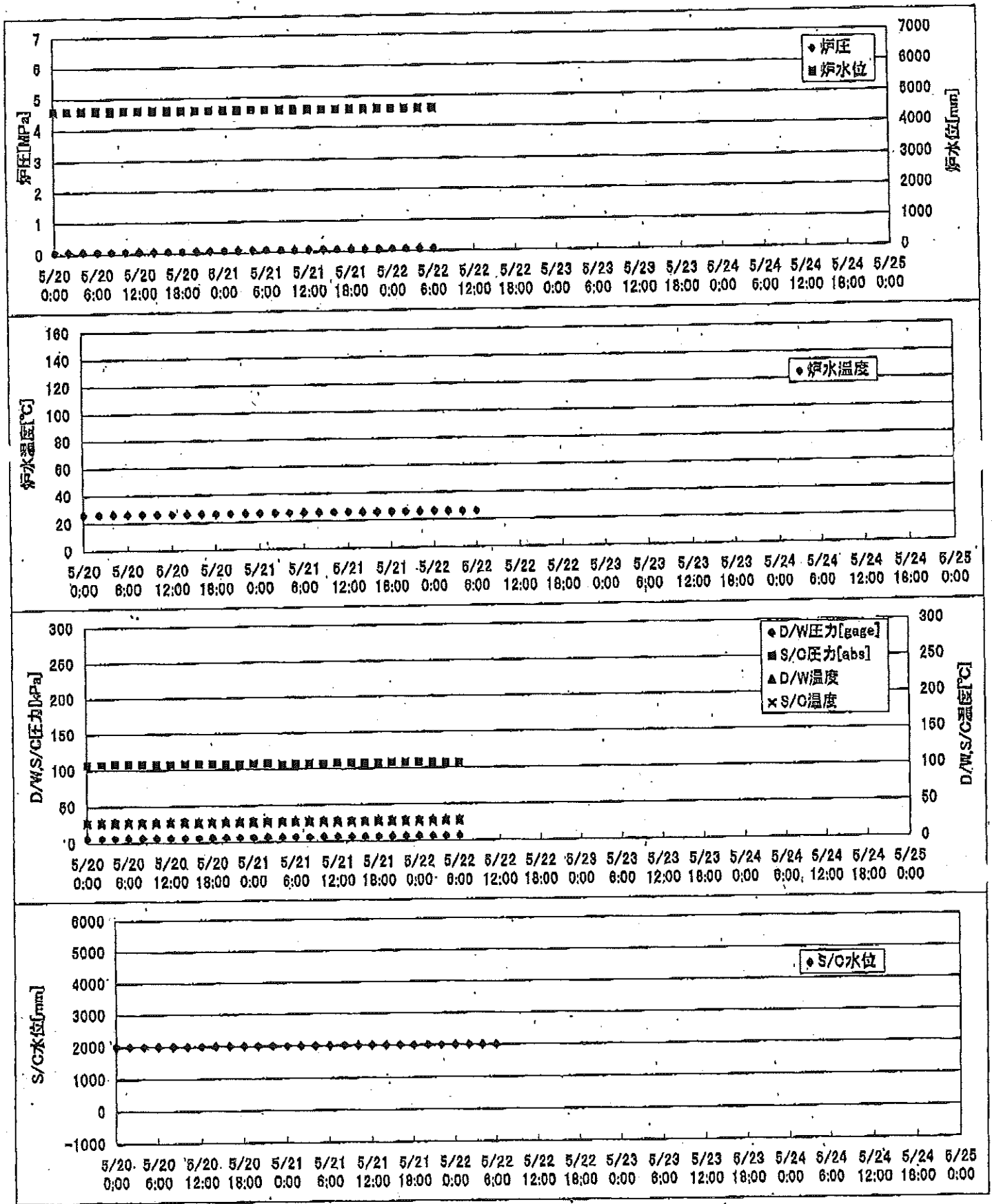
2F-2号機



2F-3号機



2F-4号機



2F-1号機

※燃料頂部(TAF)からの水位=炉水位+4200[mm]

時間	炉圧 [MPa (gage)]	炉水位 [mm] 停止時	炉水温度[°C] 給水/スル温度	D/W圧力 [kPa(gage)]	D/W温度 [°C]	S/C圧力 [kPa(abs)]	S/C水位 [mm]	S/C温度 [°C]
2011/5/20 0:00	0.05	5600	23.4	5	25.9	107	1979	23
2011/5/20 2:00	0.05	5600	23.5	5	25.9	107	1977	23
2011/5/20 4:00	0.05	5600	23.5	5	26.0	107	1977	23
2011/5/20 6:00	0.05	5600	23.5	5	26.0	107	1977	23
2011/5/20 8:00	0.05	5600	23.5	5	26.0	107	1977	23
2011/5/20 10:00	0.05	5600	23.5	5	26.0	107	1978	23
2011/5/20 12:00	0.05	5600	23.5	5	26.0	107	1977	23
2011/5/20 14:00	0.05	5600	23.5	5	26.0	107	1977	23
2011/5/20 16:00	0.05	5600	23.5	5	26.0	107	1977	23
2011/5/20 18:00	0.05	5600	23.5	5	25.9	107	1977	23
2011/5/20 20:00	0.05	5600	23.5	5	25.8	107	1977	23
2011/5/20 22:00	0.05	5600	23.5	5	25.8	107	1977	23
2011/5/21 0:00	0.05	5600	23.5	5	25.8	107	1977	24
2011/5/21 2:00	0.05	5600	23.5	5	25.9	107	1980	24
2011/5/21 4:00	0.05	5600	23.5	5	25.9	107	1976	24
2011/5/21 6:00	0.05	5600	23.5	5	25.9	107	1977	24
2011/5/21 8:00	0.05	5600	23.5	5	25.9	107	1977	23
2011/5/21 10:00	0.05	5600	23.5	5	25.9	107	1977	23
2011/5/21 12:00	0.05	5600	23.4	5	25.8	107	1977	23
2011/5/21 14:00	0.05	5600	23.4	5	25.8	107	1977	23
2011/5/21 16:00	0.05	5600	23.4	5	25.8	107	1977	23
2011/5/21 18:00	0.05	5600	23.4	5	25.8	107	1977	23
2011/5/21 20:00	0.05	5600	23.4	5	25.8	107	1977	23
2011/5/21 22:00	0.05	5600	23.4	5	25.8	106	1977	23
2011/5/22 0:00	0.05	5600	23.4	5	25.8	105	1977	23
2011/5/22 2:00	0.05	5600	23.4	5	25.7	106	1977	23
2011/5/22 4:00	0.05	5600	23.4	5	25.7	106	1977	23
2011/5/22 6:00	0.05	5600	23.3	5	25.7	106	1977	23
2011/5/22 8:00								
2011/5/22 10:00								
2011/5/22 12:00								
2011/5/22 14:00								
2011/5/22 16:00								
2011/5/22 18:00								
2011/5/22 20:00								
2011/5/22 22:00								
2011/5/23 0:00								

2F-2号機

※燃料頂部(TAF)からの水位=炉水位+4200[mm]

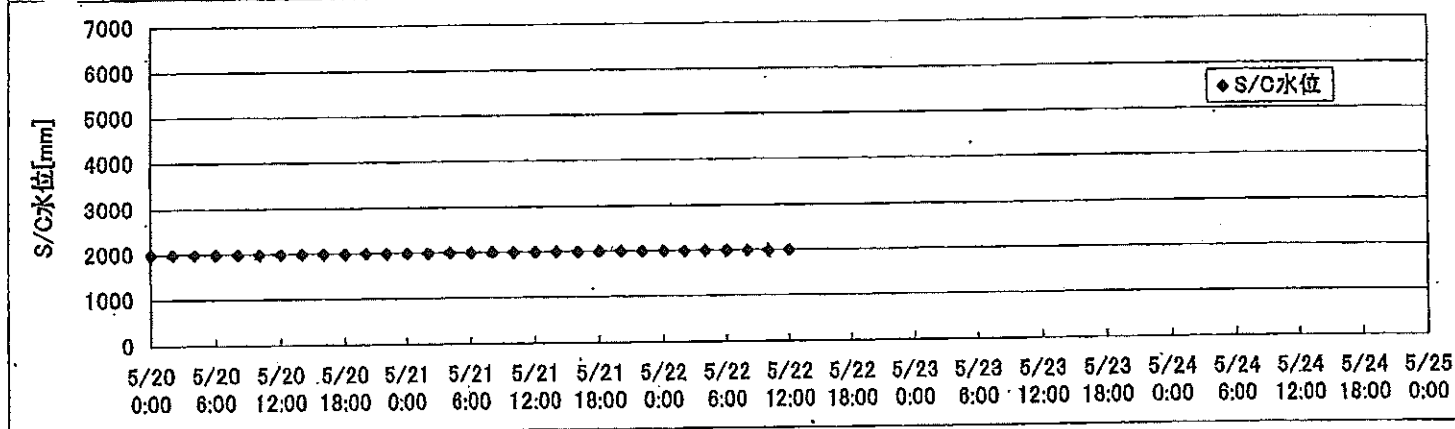
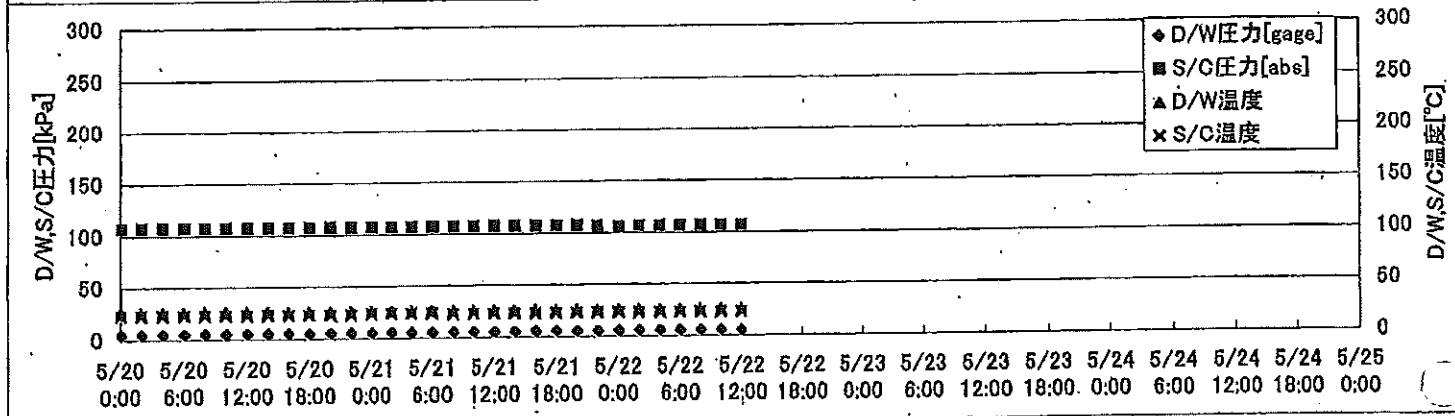
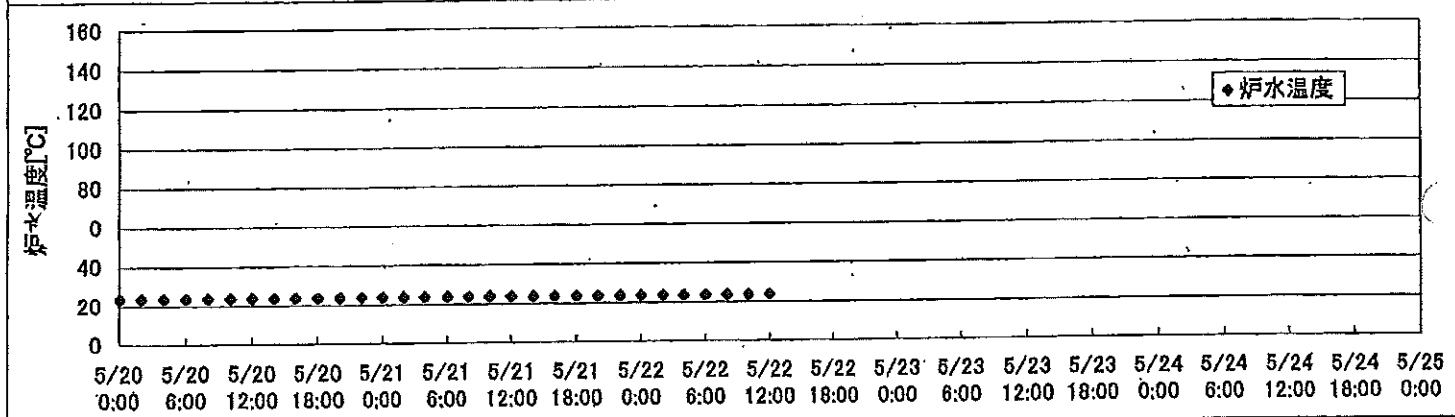
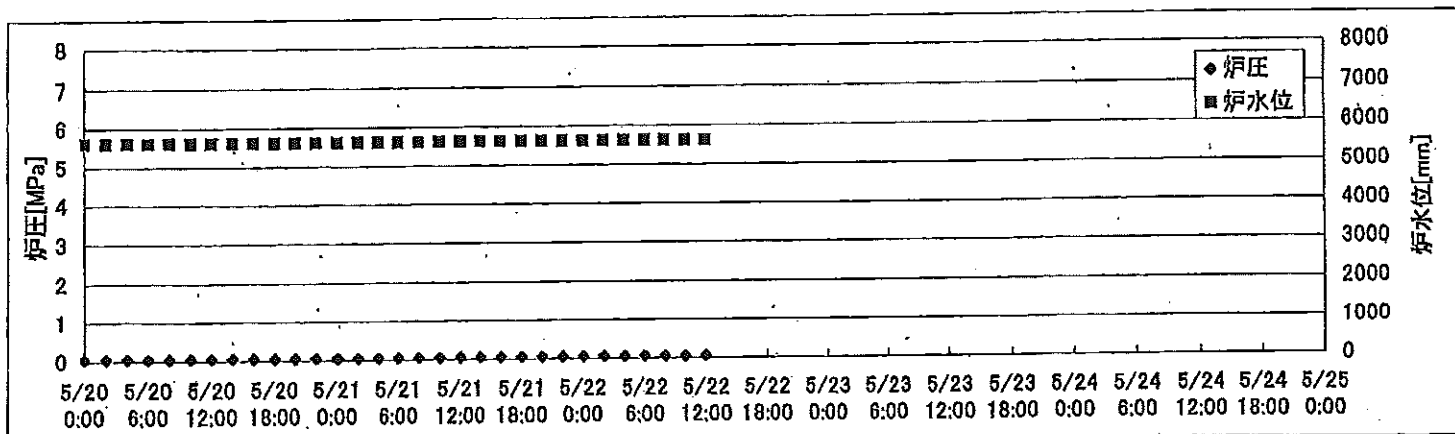
時間	炉圧 [MPa (gage)]	炉水位 [mm] 停止時	炉水温度[°C] 給水/スル温度	D/W圧力 [kPa(gage)]	D/W温度 [°C]	S/C圧力 [kPa(abs)]	S/C水位 [mm]	S/C温度 [°C]
2011/5/20 0:00	0.02	5650	23.1	4.4	26.4	106	1200	23
2011/5/20 2:00	0.02	5650	23.1	4.5	26.4	105	1200	22
2011/5/20 4:00	0.02	5650	23.0	4.5	26.4	106	1200	22
2011/5/20 6:00	0.02	5650	23.1	4.4	26.4	106	1200	23
2011/5/20 8:00	0.02	5650	23.1	4.4	26.4	106	1200	23
2011/5/20 10:00	0.02	5650	23.1	4.5	26.4	106	1200	22
2011/5/20 12:00	0.02	5650	23.1	4.6	26.4	106	1200	23
2011/5/20 14:00	0.02	5650	23.1	4.7	26.3	105	1200	23
2011/5/20 16:00	0.02	5600	23.1	4.8	26.3	105	1200	22
2011/5/20 18:00	0.02	5600	23.1	4.9	26.2	105	1200	23
2011/5/20 20:00	0.02	5600	23.1	4.8	26.4	106	1200	23
2011/5/20 22:00	0.02	5600	23.1	4.7	26.3	106	1200	23
2011/5/21 0:00	0.02	5600	23.1	4.7	26.3	105	1200	23
2011/5/21 2:00	0.02	5600	23.1	4.8	26.2	106	1200	23
2011/5/21 4:00	0.02	5600	23.1	4.9	26.3	106	1200	23
2011/5/21 6:00	0.02	5600	23.0	4.9	26.2	105	1200	22
2011/5/21 8:00	0.02	5600	23.0	4.9	26.3	105	1200	22
2011/5/21 10:00	0.02	5600	23.0	4.9	26.3	105	1200	22
2011/5/21 12:00	0.02	5600	23.0	4.9	26.3	105	1200	22
2011/5/21 14:00	0.02	5600	23.0	4.9	26.3	105	1200	22
2011/5/21 16:00	0.02	5600	22.9	5.0	26.3	105	1200	22
2011/5/21 18:00	0.02	5600	22.9	5.0	26.3	105	1200	22
2011/5/21 20:00	0.02	5600	22.9	4.9	26.3	106	1200	22
2011/5/21 22:00	0.02	5600	23.0	4.9	26.3	106	1200	22
2011/5/22 0:00	0.02	5600	23.0	5.0	26.3	106	1200	22
2011/5/22 2:00	0.02	5600	23.1	5.1	26.3	106	1200	23
2011/5/22 4:00	0.02	5600	23.1	5.2	26.3	105	1200	23
2011/5/22 6:00	0.02	5600	23.1	5.2	26.3	105	1200	23
2011/5/22 8:00								
2011/5/22 10:00								
2011/5/22 12:00								
2011/5/22 14:00								
2011/5/22 16:00								
2011/5/22 18:00								
2011/5/22 20:00								
2011/5/22 22:00								
2011/5/23 0:00								

2F-4号機

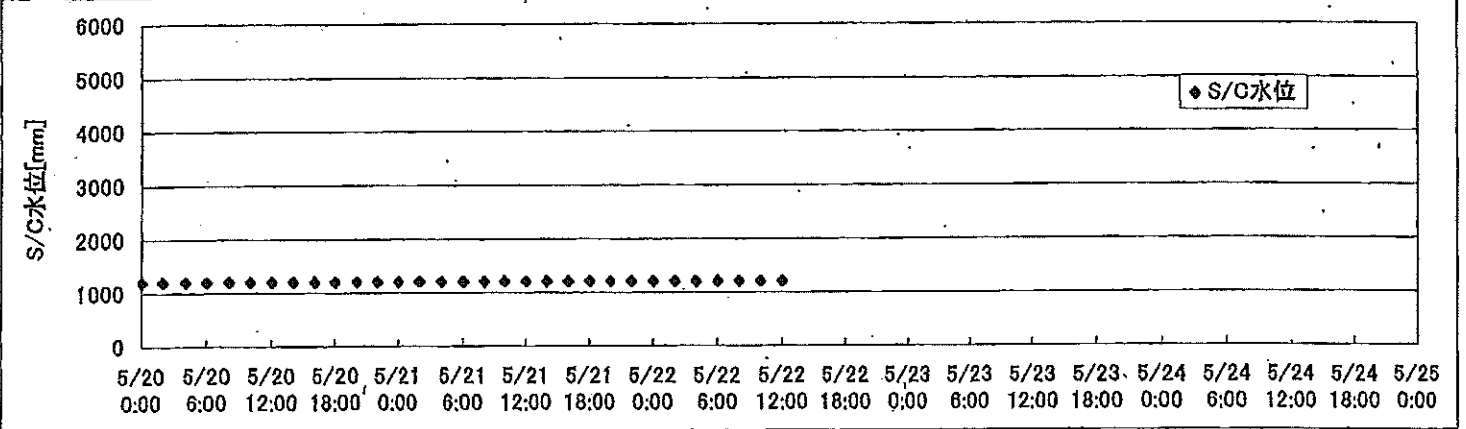
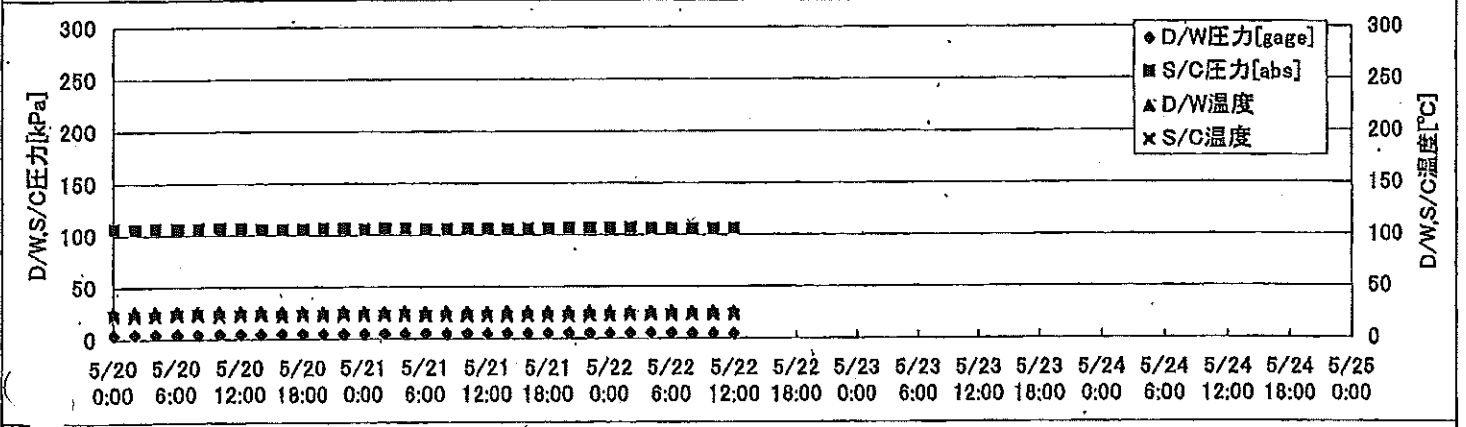
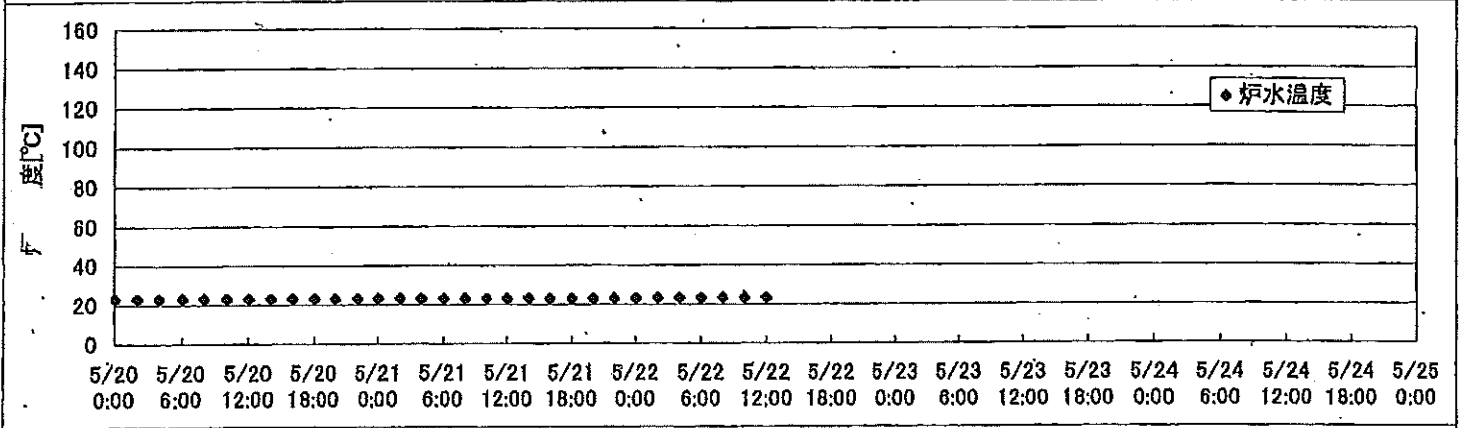
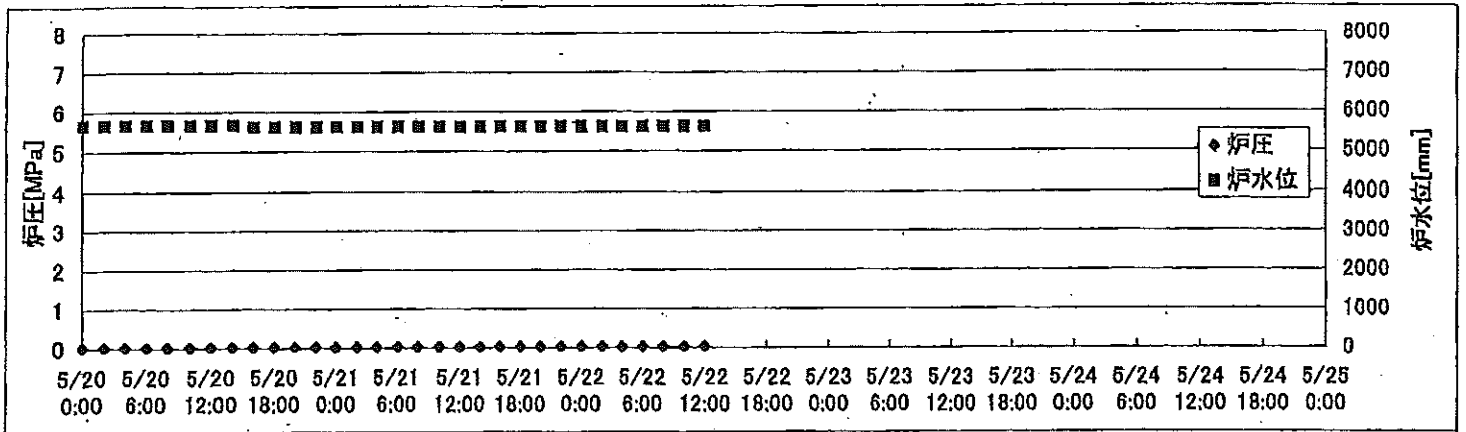
※燃料頂部(TAF)からの水位=炉水位+4200[mm]

時間	炉圧 [MPa (gage)]	炉水位 [mm] アップセット	炉水温度[°C] 給水/スル温度	D/W圧力 [kPa(gage)]	D/W温度 [°C]	S/C圧力 [kPa(abs)]	S/C水位 [mm]	S/C温度 [°C]
2011/5/20 0:00	0.07	4589	26.3	6	29.2	107	2000	27
2011/5/20 2:00	0.07	4589	26.2	6	29.2	107	2000	27
2011/5/20 4:00	0.07	4589	26.2	6	29.2	107	2000	27
2011/5/20 6:00	0.07	4589	26.2	6	29.2	107	2000	27
2011/5/20 8:00	0.07	4589	26.2	6	29.0	107	2000	27
2011/5/20 10:00	0.07	4589	26.2	6	28.9	107	2000	27
2011/5/20 12:00	0.07	4589	26.2	6	29.2	107	2000	27
2011/5/20 14:00	0.07	4589	26.3	6	29.4	107	2000	27
2011/5/20 16:00	0.07	4589	26.2	6	28.8	107	2000	27
2011/5/20 18:00	0.07	4589	26.2	6	28.8	107	2000	27
2011/5/20 20:00	0.08	4589	26.3	6	29.1	107	2000	27
2011/5/20 22:00	0.08	4589	26.2	6	29.1	107	2000	27
2011/5/21 0:00	0.08	4589	26.2	6	28.8	107	2000	27
2011/5/21 2:00	0.08	4589	26.2	6	29.1	107	2000	27
2011/5/21 4:00	0.08	4589	26.2	6	29.1	106	2000	27
2011/5/21 6:00	0.08	4589	26.2	6	29.1	107	2000	27
2011/5/21 8:00	0.08	4589	26.2	6	29.2	107	2000	27
2011/5/21 10:00	0.08	4589	26.2	6	29.4	106	2000	27
2011/5/21 12:00	0.08	4589	26.2	6	29.4	107	2000	27
2011/5/21 14:00	0.08	4589	26.1	6	28.9	107	2000	27
2011/5/21 16:00	0.08	4589	26.1	6	29.0	107	2000	27
2011/5/21 18:00	0.08	4589	26.1	6	29.2	106	2000	27
2011/5/21 20:00	0.08	4589	26.1	6	29.0	107	2000	27
2011/5/21 22:00	0.08	4589	26.1	6	29.0	107	2000	27
2011/5/22 0:00	0.08	4589	26.1	6	29.2	107	2000	27
2011/5/22 2:00	0.08	4589	26.0	6	29.1	107	2000	27
2011/5/22 4:00	0.08	4589	26.0	6	29.2	107	2000	27
2011/5/22 6:00	0.08	4589	26.0	6	29.2	107	2000	27
2011/5/22 8:00								
2011/5/22 10:00								
2011/5/22 12:00								
2011/5/22 14:00								
2011/5/22 16:00								
2011/5/22 18:00								
2011/5/22 20:00								
2011/5/22 22:00								
2011/5/23 0:00								

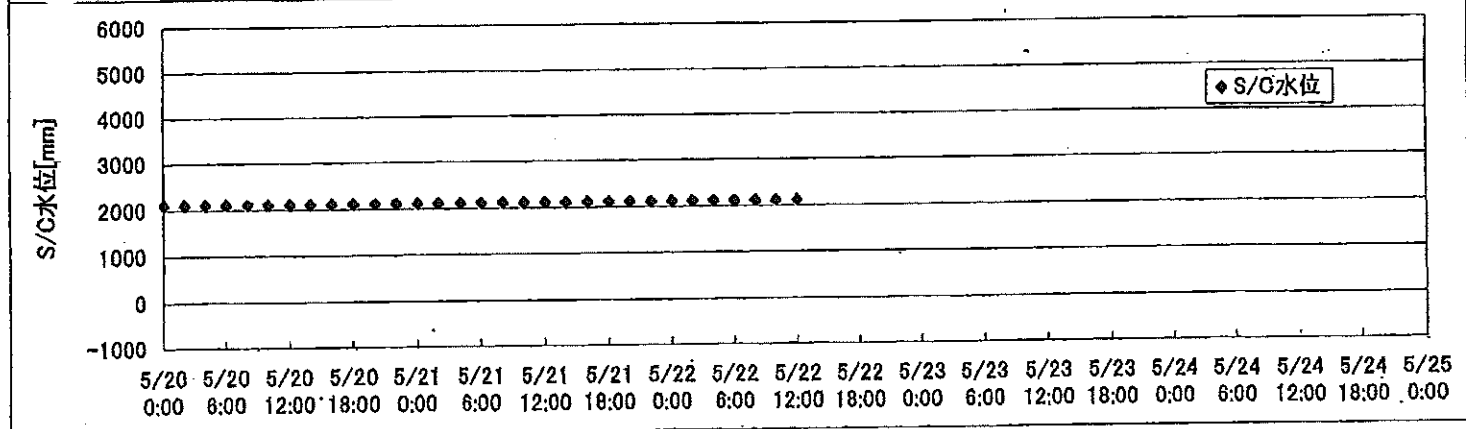
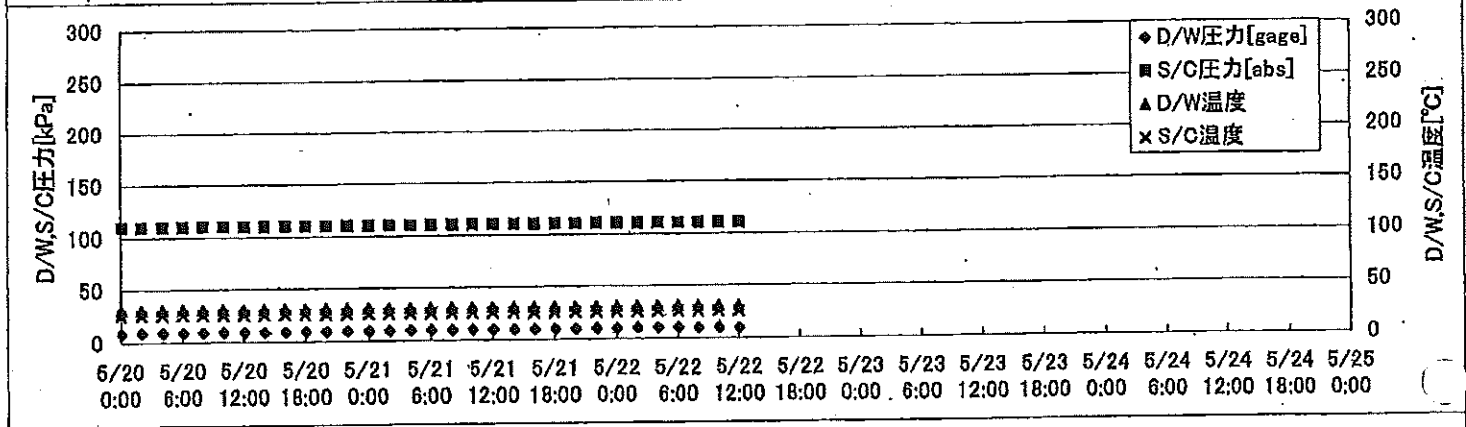
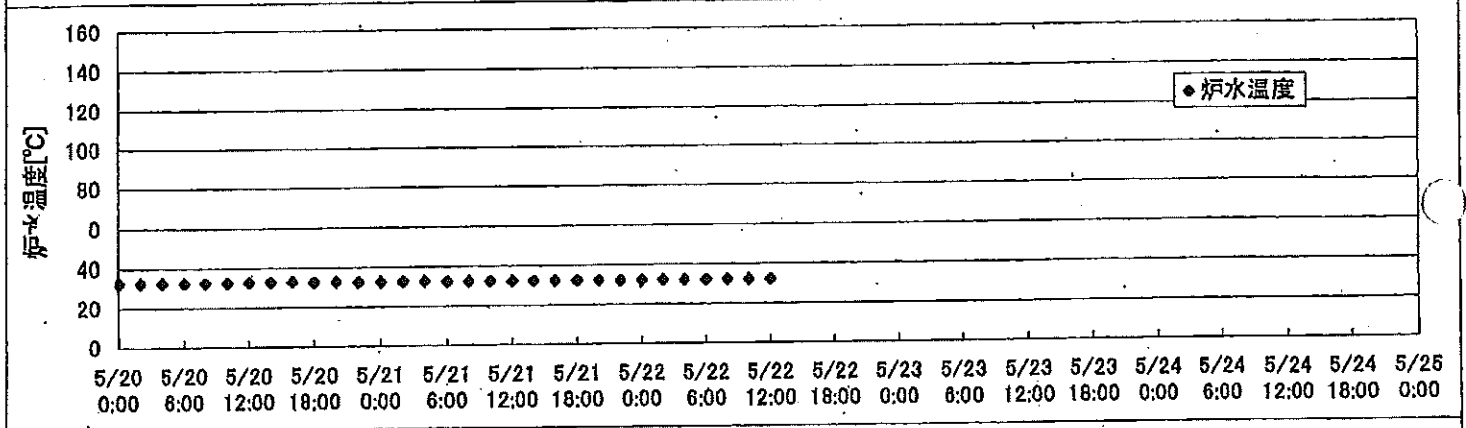
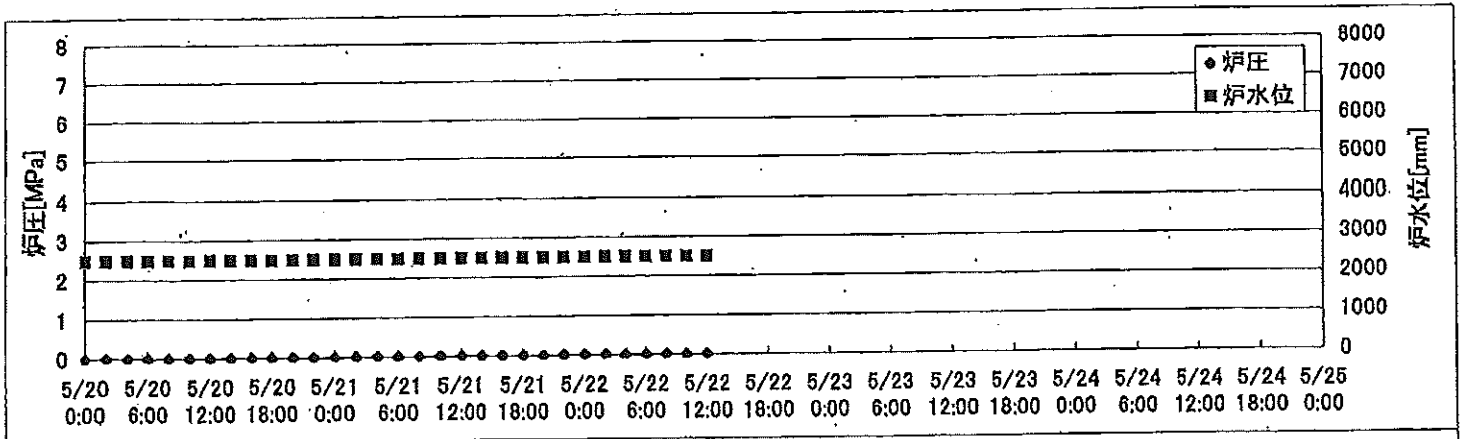
2F-1号機



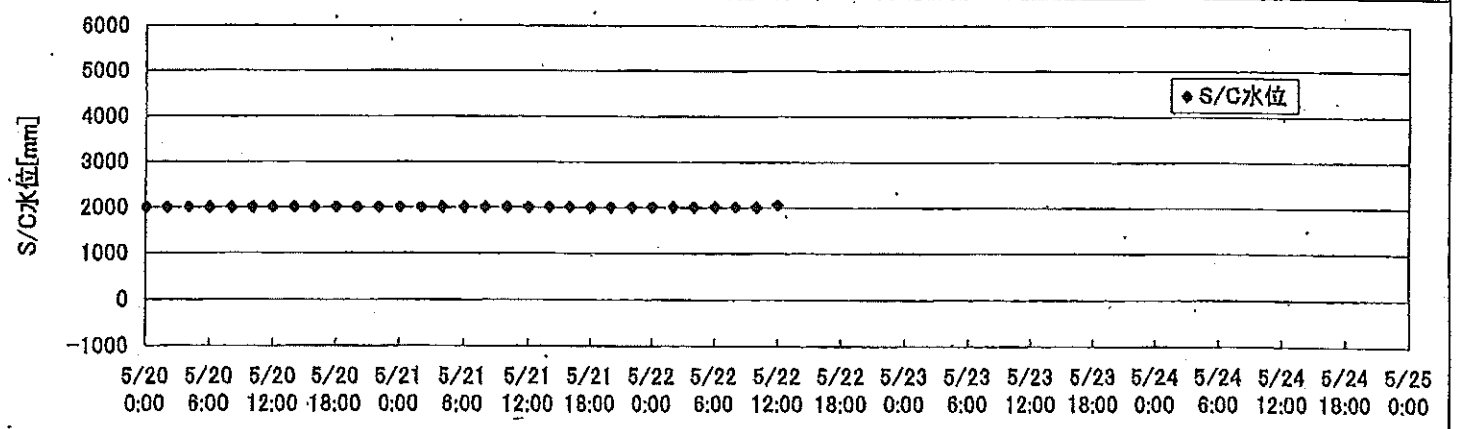
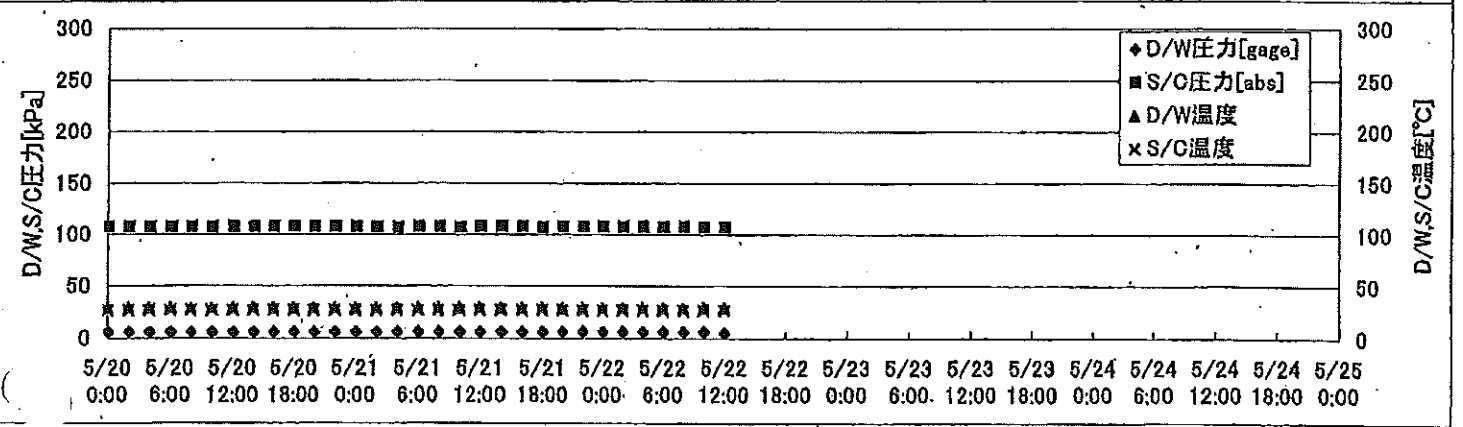
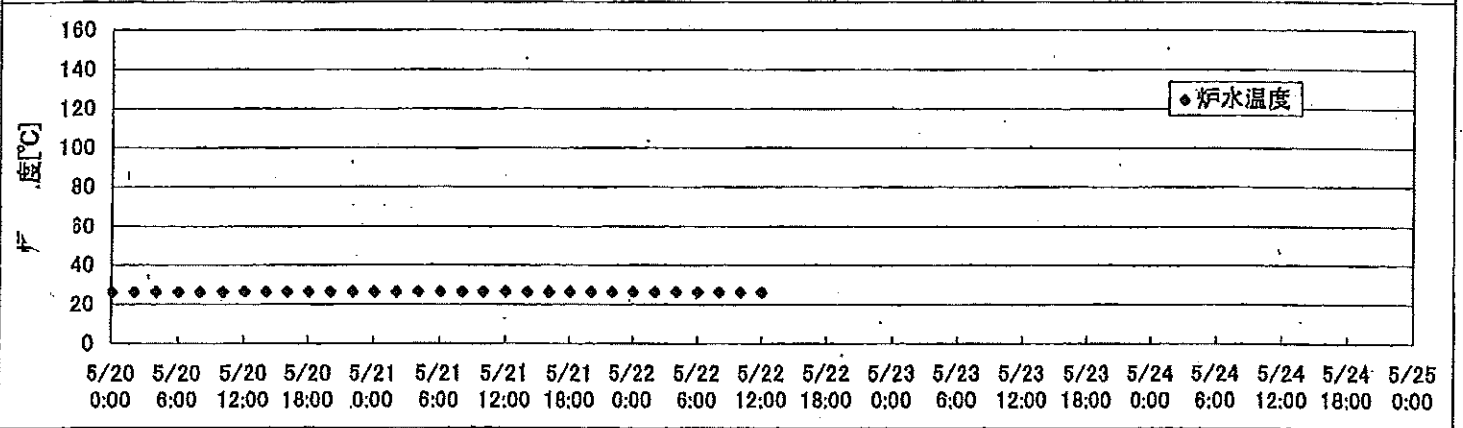
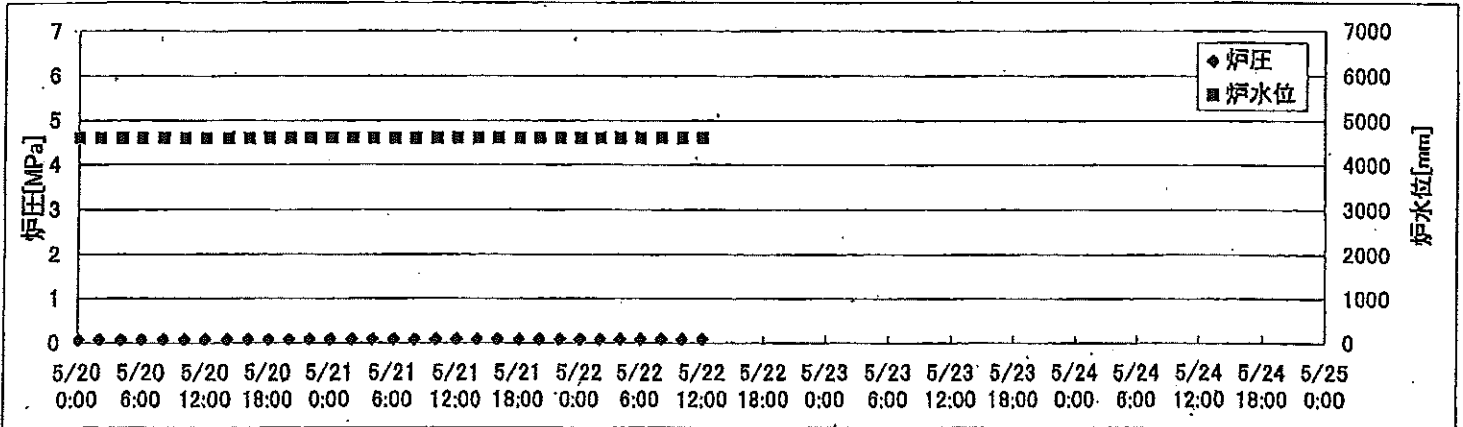
2F-2号機



2F-3号機



2F-4号機



2F-1号機

※燃料頂部(TAF)からの水位=炉水位+4200[mm]

時間	炉圧 [MPa (gage)]	炉水位 [mm] 停止時	炉水温度[°C] 給水/スル温度	D/W圧力 [kPa(gage)]	D/W温度 [°C]	S/C圧力 [kPa(abs)]	S/C水位 [mm]	S/C温度 [°C]
2011/5/20 0:00	0.05	5600	23.4	5	25.9	107	1979	23
2011/5/20 2:00	0.05	5600	23.5	5	25.9	107	1977	23
2011/5/20 4:00	0.05	5600	23.5	5	26.0	107	1977	23
2011/5/20 6:00	0.05	5600	23.5	5	26.0	107	1977	23
2011/5/20 8:00	0.05	5600	23.5	5	26.0	107	1977	23
2011/5/20 10:00	0.05	5600	23.5	5	26.0	107	1978	23
2011/5/20 12:00	0.05	5600	23.5	5	26.0	107	1977	23
2011/5/20 14:00	0.05	5600	23.5	5	26.0	107	1977	23
2011/5/20 16:00	0.05	5600	23.5	5	26.0	107	1977	23
2011/5/20 18:00	0.05	5600	23.5	5	25.9	107	1977	23
2011/5/20 20:00	0.05	5600	23.5	5	25.8	107	1977	23
2011/5/20 22:00	0.05	5600	23.5	5	25.8	107	1977	23
2011/5/21 0:00	0.05	5600	23.5	5	25.8	107	1977	24
2011/5/21 2:00	0.05	5600	23.5	5	25.9	107	1980	24
2011/5/21 4:00	0.05	5600	23.5	5	25.9	107	1976	24
2011/5/21 6:00	0.05	5600	23.5	5	25.9	107	1977	24
2011/5/21 8:00	0.05	5600	23.5	5	25.9	107	1977	23
2011/5/21 10:00	0.05	5600	23.5	5	25.9	107	1977	23
2011/5/21 12:00	0.05	5600	23.4	5	25.8	107	1977	23
2011/5/21 14:00	0.05	5600	23.4	5	25.8	107	1977	23
2011/5/21 16:00	0.05	5600	23.4	5	25.8	107	1977	23
2011/5/21 18:00	0.05	5600	23.4	5	25.8	107	1977	23
2011/5/21 20:00	0.05	5600	23.4	5	25.8	107	1977	23
2011/5/21 22:00	0.05	5600	23.4	5	25.8	106	1977	23
2011/5/22 0:00	0.05	5600	23.4	5	25.8	105	1977	23
2011/5/22 2:00	0.05	5600	23.4	5	25.7	106	1977	23
2011/5/22 4:00	0.05	5600	23.4	5	25.7	106	1977	23
2011/5/22 6:00	0.05	5600	23.3	5	25.7	106	1977	23
2011/5/22 8:00	0.05	5600	23.3	5	25.7	106	1977	23
2011/5/22 10:00	0.05	5600	23.3	5	25.8	106	1978	23
2011/5/22 12:00	0.05	5600	23.5	5	25.8	106	1978	23
2011/5/22 14:00								
2011/5/22 16:00								
2011/5/22 18:00								
2011/5/22 20:00								
2011/5/22 22:00								
2011/5/23 0:00								

2F-3号機

※燃料頂部(TAF)からの水位=炉水位+4200[mm]

時間	炉圧 [MPa (gage)]	炉水位 [mm] アップセット	炉水温度[°C] 給水/スル温度	D/W圧力 [kPa(gage)]	D/W温度 [°C]	S/C圧力 [kPa(abs)]	S/C水位 [mm]	S/C温度 [°C]
2011/5/20 0:00	0.00	2483	32.5	9	31.0	110	2100	26
2011/5/20 2:00	0.00	2483	32.5	9	31.0	110	2100	26
2011/5/20 4:00	0.00	2483	32.6	9	31.0	110	2100	26
2011/5/20 6:00	0.00	2483	32.6	9	31.1	110	2100	26
2011/5/20 8:00	0.00	2483	32.6	9	31.1	110	2100	26
2011/5/20 10:00	0.00	2483	32.6	9	31.1	110	2100	26
2011/5/20 12:00	0.00	2483	32.7	9	31.1	110	2100	26
2011/5/20 14:00	0.00	2483	32.8	9	31.1	110	2100	26
2011/5/20 16:00	0.00	2483	32.8	9	31.1	110	2100	26
2011/5/20 18:00	0.00	2483	32.7	9	31.2	110	2100	26
2011/5/20 20:00	0.00	2483	32.7	9	31.2	110	2100	26
2011/5/20 22:00	0.00	2483	32.6	9	31.0	110	2100	26
2011/5/21 0:00	0.00	2483	32.5	9	31.2	110	2100	26
2011/5/21 2:00	0.00	2482	32.5	9	31.0	110	2100	26
2011/5/21 4:00	0.00	2482	32.5	10	31.0	110	2100	26
2011/5/21 6:00	0.00	2482	32.4	10	31.0	110	2100	26
2011/5/21 8:00	0.00	2482	32.3	9	31.0	110	2100	26
2011/5/21 10:00	0.00	2481	32.2	9	30.9	110	2100	26
2011/5/21 12:00	0.00	2481	32.2	10	30.9	110	2100	26
2011/5/21 14:00	0.00	2481	32.3	10	30.9	110	2100	26
2011/5/21 16:00	0.00	2481	32.3	10	31.0	110	2100	26
2011/5/21 18:00	0.00	2481	32.3	10	30.9	110	2100	26
2011/5/21 20:00	0.00	2481	32.2	10	31.0	110	2100	26
2011/5/21 22:00	0.00	2481	32.1	10	31.0	110	2100	26
2011/5/22 0:00	0.00	2481	32.0	10	30.9	110	2100	26
2011/5/22 2:00	0.00	2481	32.0	10	30.9	110	2100	26
2011/5/22 4:00	0.00	2481	32.0	10	30.9	110	2100	26
2011/5/22 6:00	0.00	2481	32.0	10	30.9	110	2100	26
2011/5/22 8:00	0.00	2481	32.0	10	30.9	110	2100	26
2011/5/22 10:00	0.00	2481	32.0	9	30.9	110	2100	26
2011/5/22 12:00	0.00	2481	32.0	9	30.9	110	2100	26
2011/5/22 14:00								
2011/5/22 16:00								
2011/5/22 18:00								
2011/5/22 20:00								
2011/5/22 22:00								
2011/5/23 0:00								

