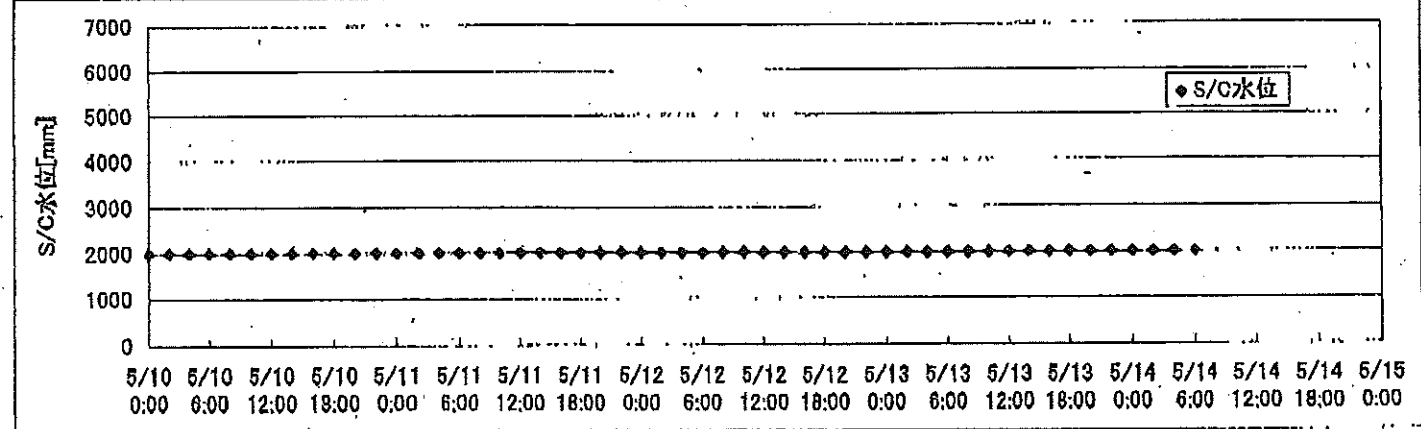
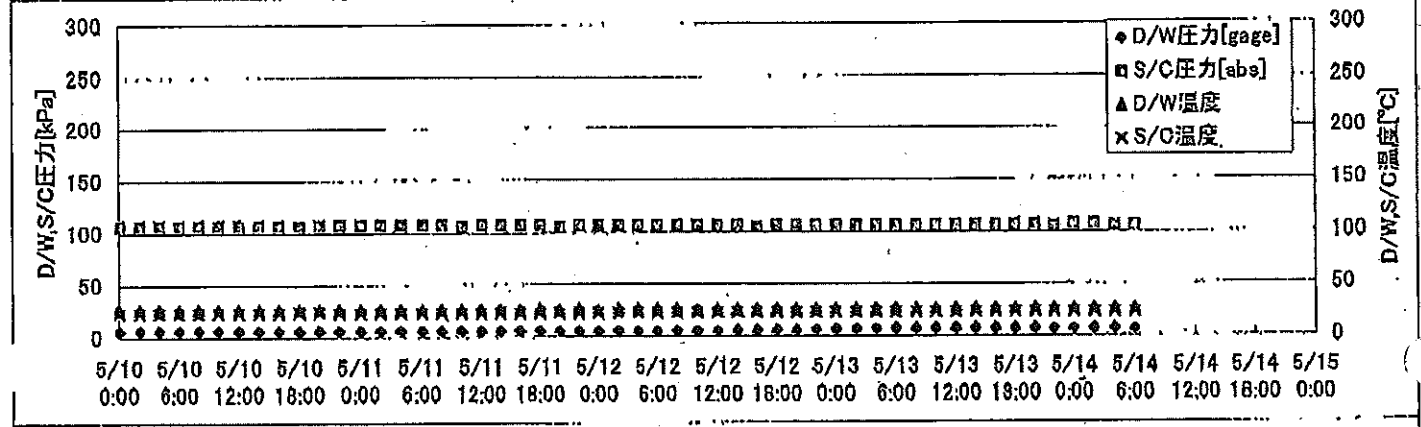
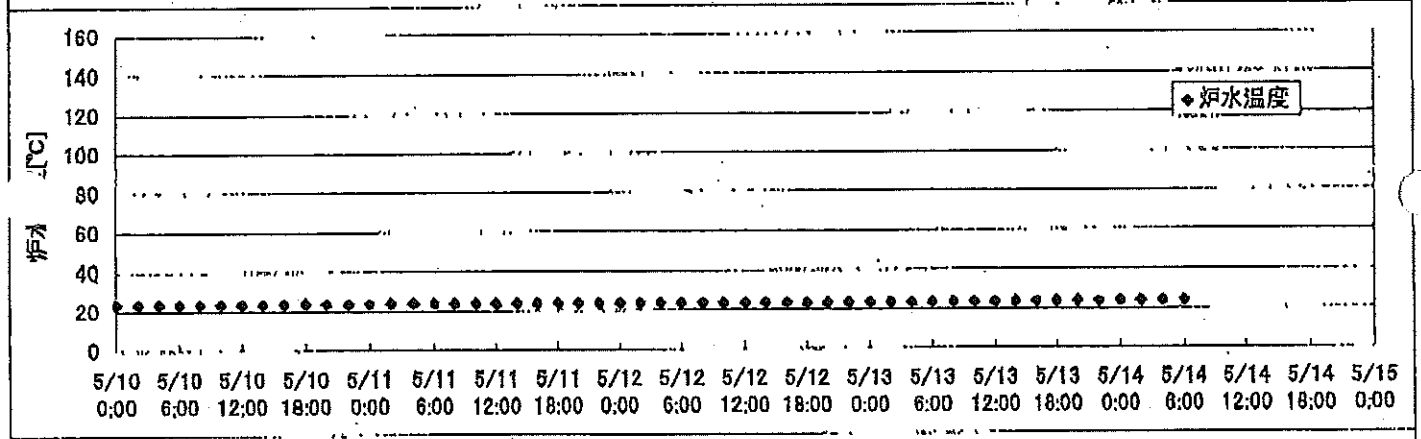
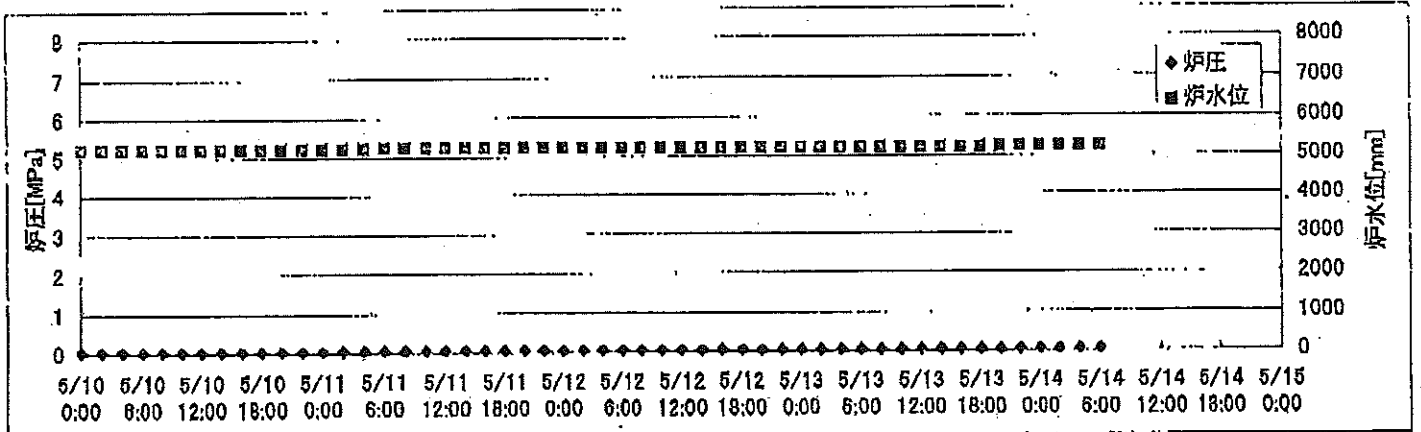
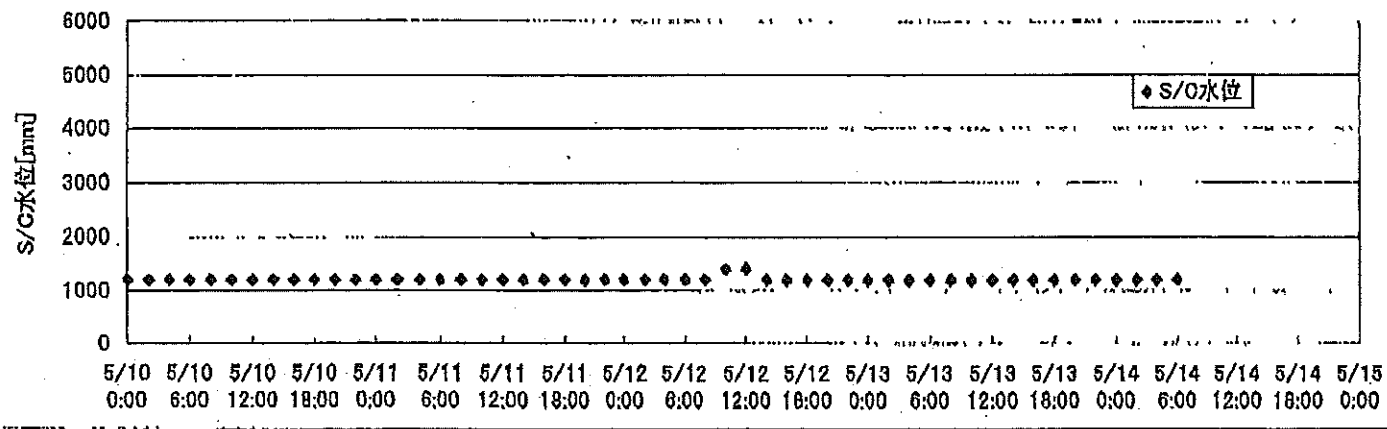
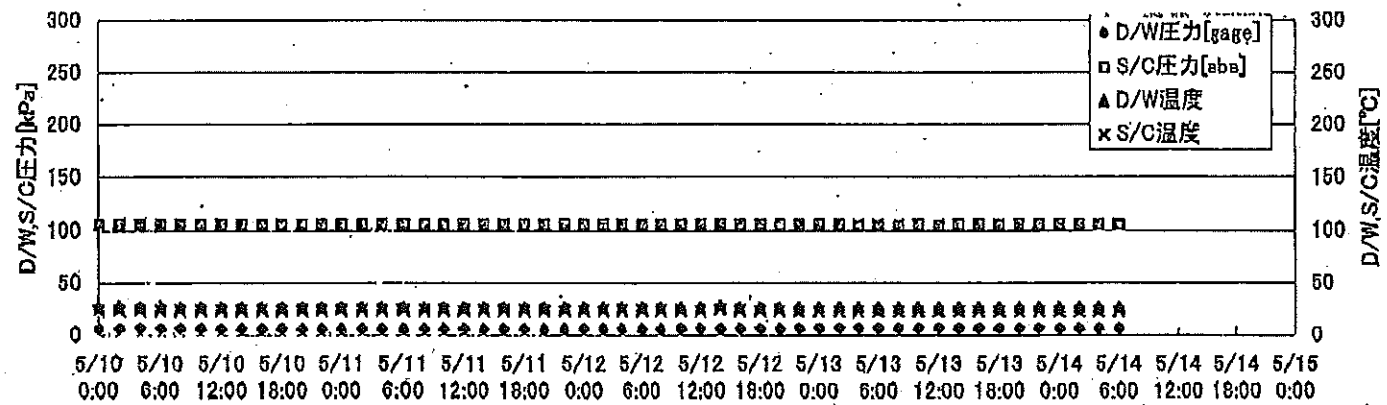
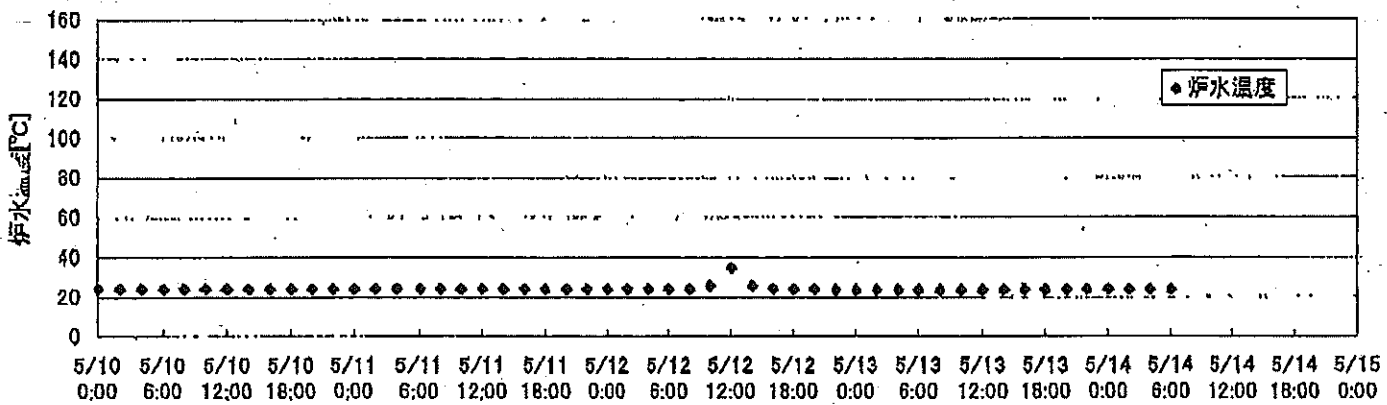
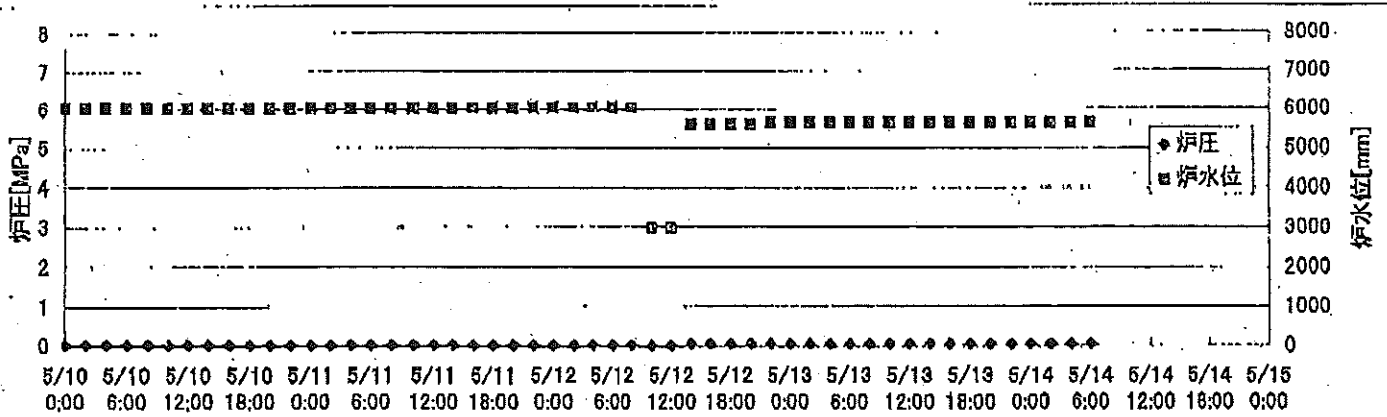


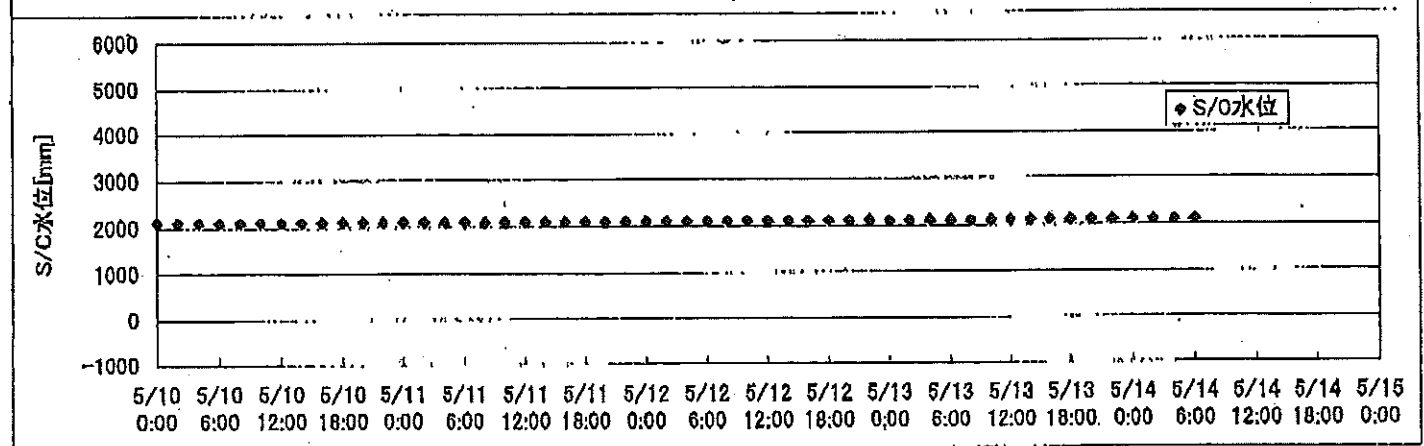
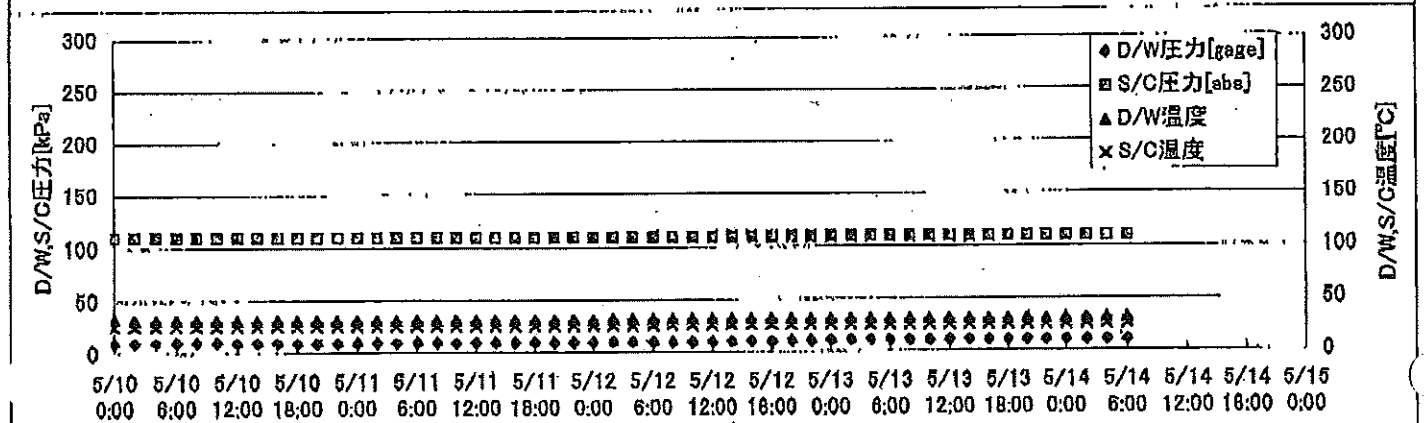
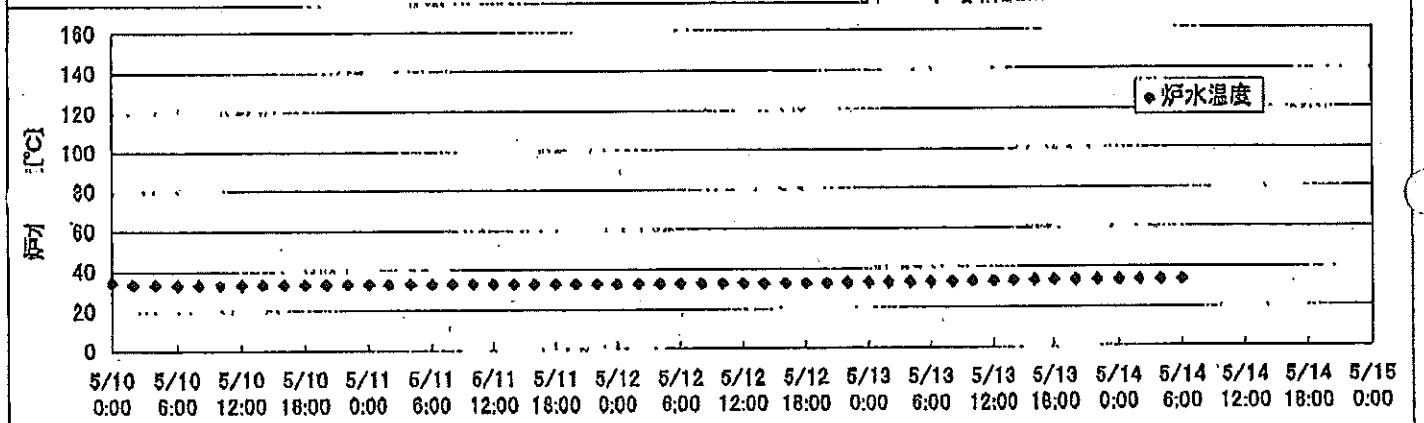
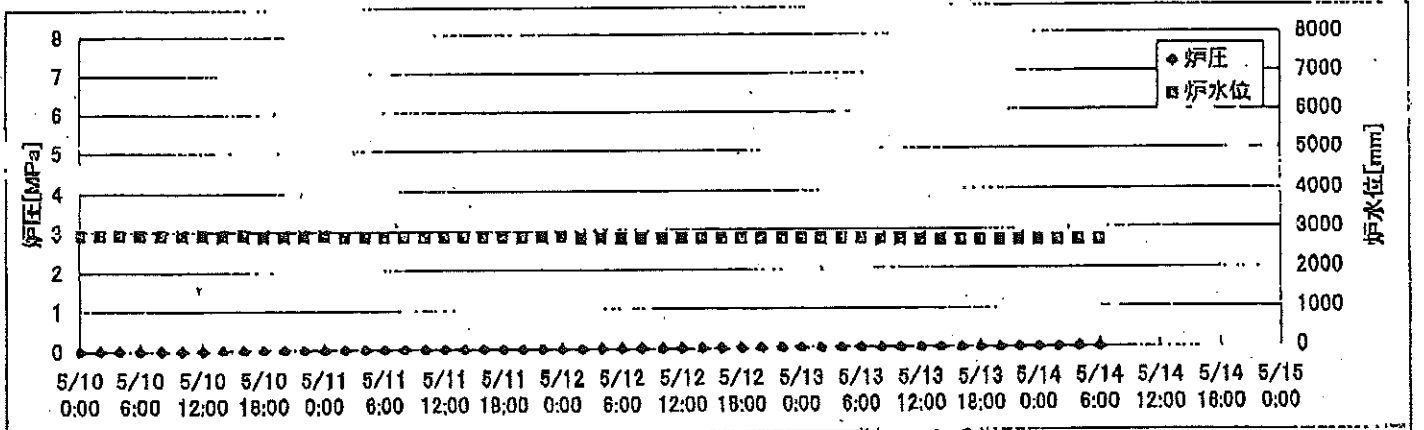
2F-1号機



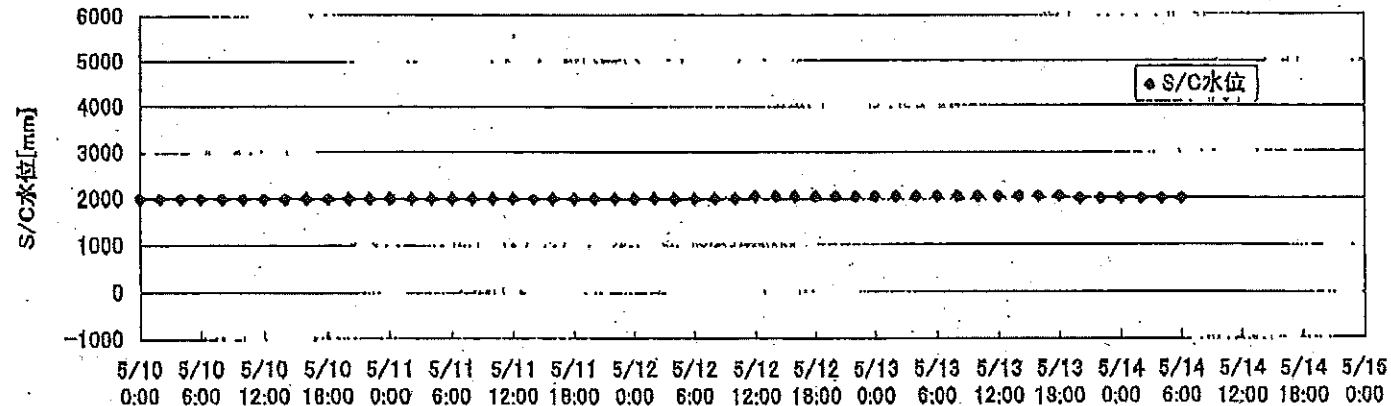
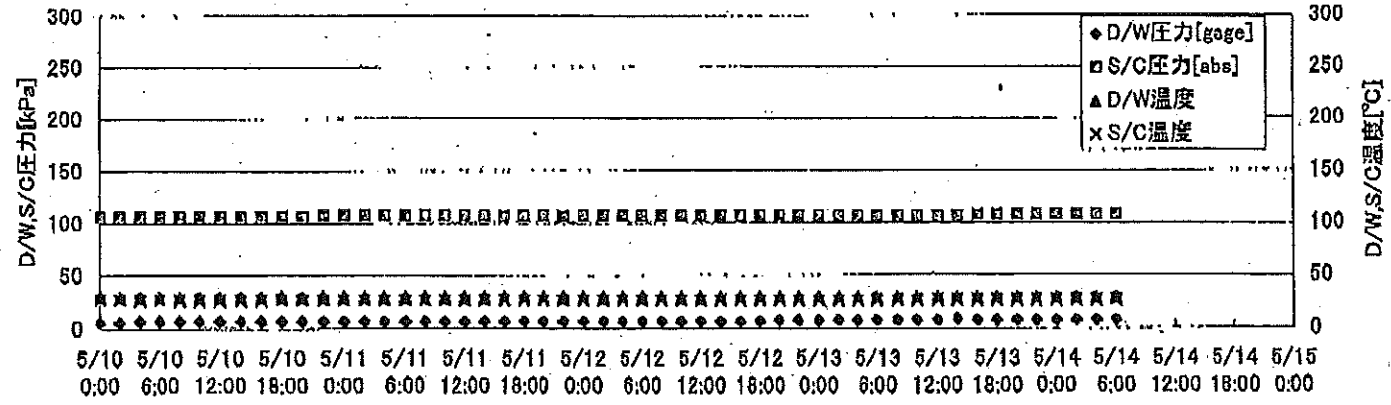
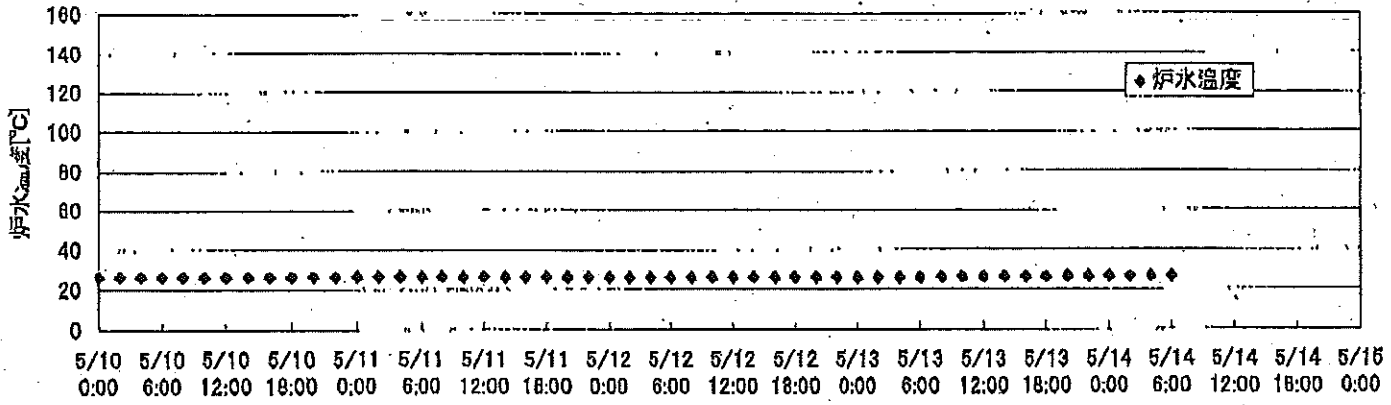
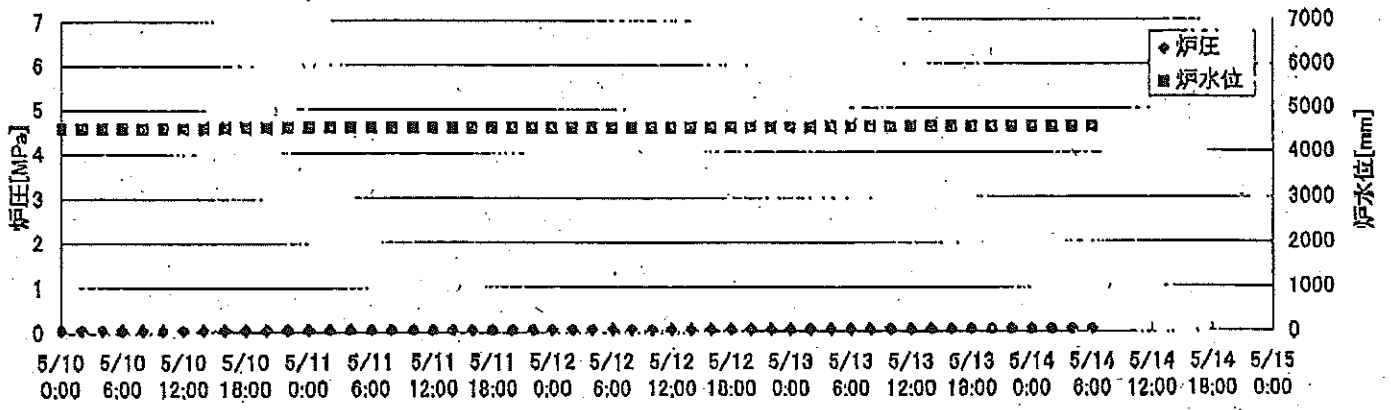
2F-2号機



2F-3号機



2F-4号機



2F-1号機

※燃料頂部(TAF)からの水位=炉水位+4200[mm]

時間	炉圧 [MPa (gage)]	炉水位 [mm] 停止時	炉水温度[°C] 給水ノズル温度	D/W圧力 [kPa(gage)]	D/W温度 [°C]	S/C圧力 [kPa(abs)]	S/C水位 [mm]	S/C温度 [°C]
2011/5/12 0:00	0.06	5250	23.6	5	26.3	107	2000	23
2011/5/12 2:00	0.06	5250	23.6	5	26.3	107	2000	23
2011/5/12 4:00	0.06	5250	23.6	5	26.3	107	2000	23
2011/5/12 6:00	0.06	5250	23.6	5	26.4	107	2000	23
2011/5/12 8:00	0.06	5250	23.6	5	26.4	107	2000	23
2011/5/12 10:00	0.06	5250	23.6	5	26.2	107	2000	23
2011/5/12 12:00	0.06	5250	23.5	5	26.2	107	2000	23
2011/5/12 14:00	0.06	5250	23.6	5	26.2	107	2000	23
2011/5/12 16:00	0.06	5250	23.6	6	26.2	105	2000	23
2011/5/12 18:00	0.06	5250	23.5	6	26.2	107	2000	23
2011/5/12 20:00	0.06	5250	23.5	6	26.2	107	2000	23
2011/5/12 22:00	0.06	5250	23.6	6	26.3	107	1998	23
2011/5/13 0:00	0.06	5250	23.6	7	26.3	107	1998	23
2011/5/13 2:00	0.06	5250	23.6	7	26.3	107	1998	23
2011/5/13 4:00	0.06	5250	23.5	7	26.2	107	1998	23
2011/5/13 6:00	0.06	5250	23.6	7	26.3	107	1997	23
2011/5/13 8:00	0.06	5250	23.6	7	26.2	107	1999	23
2011/5/13 10:00	0.06	5250	23.6	7	26.3	107	1996	23
2011/5/13 12:00	0.06	5250	23.6	7	26.3	107	1998	23
2011/5/13 14:00	0.06	5250	23.6	7	26.3	107	1995	23
2011/5/13 16:00	0.06	5250	23.6	7	26.3	107	1998	23
2011/5/13 18:00	0.06	5250	23.7	7	26.3	107	1996	23
2011/5/13 20:00	0.06	5250	23.7	7	26.3	107	1996	23
2011/5/13 22:00	0.06	5250	23.7	7	26.2	105	1996	23
2011/5/14 0:00	0.06	5250	23.8	7	26.2	107	1996	23
2011/5/14 2:00	0.06	5250	23.8	6	26.2	107	1998	23
2011/5/14 4:00	0.06	5250	23.8	6	26.2	105	1998	23
2011/5/14 6:00	0.06	5250	23.8	6	26.2	105	1998	23
2011/5/14 8:00								
2011/5/14 10:00								
2011/5/14 12:00								
2011/5/14 14:00								
2011/5/14 16:00								
2011/5/14 18:00								
2011/5/14 20:00								
2011/5/14 22:00								
2011/5/15 0:00								

2F-2号機

※燃料頂部(TAF)からの水位=炉水位+4200[mm]

時間	炉圧 [MPa (gage)]	炉水位 [mm] 停止時	炉水温度[°C] 給水/スル温度	D/W圧力 [kPa(gage)]	D/W温度 [°C]	S/C圧力 [kPa(abs)]	S/C水位 [mm]	S/C温度 [°C]
2011/5/12 0:00	0.03	6050	24.2	5.4	27.1	106	1200	24
2011/5/12 2:00	0.03	6050	24.2	5.4	27.1	106	1200	24
2011/5/12 4:00	0.04	6050	24.1	5.4	27.0	106	1200	24
2011/5/12 6:00	0.03	6050	24.1	5.3	27.0	106	1200	24
2011/5/12 8:00	0.03	6050	24.1	5.3	27.0	106	1200	24
2011/5/12 10:00	0.01	3000	25.8	5.7	27.0	106	1400	24
2011/5/12 12:00	0.01	3000	34.8	5.8	27.1	106	1400	24
2011/5/12 14:00	0.06	5600	25.8	5.5	27.6	106	1200	25
2011/5/12 16:00	0.06	5600	24.5	5.7	27.1	106	1200	24
2011/5/12 18:00	0.06	5600	24.1	5.8	27.1	106	1200	24
2011/5/12 20:00	0.06	5600	24.1	5.8	27.1	106	1200	24
2011/5/12 22:00	0.06	5650	23.6	6.2	27.0	106	1200	23
2011/5/13 0:00	0.06	5650	23.6	6.6	27.0	106	1200	23
2011/5/13 2:00	0.06	5650	23.6	6.8	27.1	106	1200	23
2011/5/13 4:00	0.06	5650	23.6	6.9	27.1	105	1200	23
2011/5/13 6:00	0.06	5650	23.6	6.9	27.3	105	1200	23
2011/5/13 8:00	0.06	5650	23.6	6.8	27.0	105	1200	23
2011/5/13 10:00	0.06	5650	23.6	6.8	27.0	106	1200	23
2011/5/13 12:00	0.06	5650	23.6	6.8	27.0	105	1200	23
2011/5/13 14:00	0.06	5650	23.6	6.8	27.0	106	1200	23
2011/5/13 16:00	0.06	5650	23.6	6.7	27.0	106	1200	23
2011/5/13 18:00	0.06	5650	23.6	6.7	27.0	105	1200	23
2011/5/13 20:00	0.06	5650	23.6	6.6	27.0	106	1200	23
2011/5/13 22:00	0.06	5650	23.6	6.6	27.0	106	1200	23
2011/5/14 0:00	0.06	5650	23.6	6.2	27.0	106	1200	23
2011/5/14 2:00	0.06	5650	23.6	6.2	27.0	106	1200	23
2011/5/14 4:00	0.06	5650	23.6	6.1	27.0	105	1200	23
2011/5/14 6:00	0.06	5650	23.6	6.0	27.0	105	1200	23
2011/5/14 8:00								
2011/5/14 10:00								
2011/5/14 12:00								
2011/5/14 14:00								
2011/5/14 16:00								
2011/5/14 18:00								
2011/5/14 20:00								
2011/5/14 22:00								
2011/5/15 0:00								

2F-3号機

※燃料頂部(TAF)からの水位=炉水位+4200[mm]

時間	炉圧 [MPa (gage)]	炉水位 [mm] アップセット	炉水温度[°C] 給水/スル温度	D/W圧力 [kPa(gage)]	D/W温度 [°C]	S/C圧力 [kPa(abs)]	S/C水位 [mm]	S/C温度 [°C]
2011/5/12 0:00	0.00	2834	32.8	9	31.4	110	2100	26
2011/5/12 2:00	0.00	2829	32.8	10	31.2	110	2100	26
2011/5/12 4:00	0.00	2824	32.8	9	31.4	110	2100	26
2011/5/12 6:00	0.00	2820	32.7	9	31.3	110	2100	26
2011/5/12 8:00	0.00	2817	32.7	9	31.3	110	2100	26
2011/5/12 10:00	0.00	2814	32.8	9	31.3	110	2100	26
2011/5/12 12:00	0.00	2808	32.7	9	31.2	110	2100	26
2011/5/12 14:00	0.00	2803	32.7	10	31.2	110	2100	26
2011/5/12 16:00	0.00	2800	32.7	10	31.2	110	2100	26
2011/5/12 18:00	0.00	2793	32.7	10	31.2	110	2100	26
2011/5/12 20:00	0.00	2790	32.7	10	31.2	110	2100	26
2011/5/12 22:00	0.00	2786	32.8	10	31.2	110	2100	26
2011/5/13 0:00	0.00	2783	32.8	11	31.2	110	2100	26
2011/5/13 2:00	0.00	2777	32.9	11	31.2	110	2100	26
2011/5/13 4:00	0.00	2775	33.0	11	31.2	110	2100	26
2011/5/13 6:00	0.00	2770	33.1	11	31.2	110	2100	26
2011/5/13 8:00	0.00	2766	33.2	11	31.2	110	2100	26
2011/5/13 10:00	0.00	2762	33.3	11	31.2	110	2100	26
2011/5/13 12:00	0.00	2758	33.4	11	31.2	110	2100	26
2011/5/13 14:00	0.00	2755	33.5	11	31.3	110	2100	26
2011/5/13 16:00	0.00	2748	33.5	11	31.1	110	2100	26
2011/5/13 18:00	0.00	2744	33.5	11	31.0	110	2100	26
2011/5/13 20:00	0.00	2741	33.5	11	31.2	110	2100	26
2011/5/13 22:00	0.00	2735	33.5	11	31.3	110	2100	26
2011/5/14 0:00	0.00	2730	33.5	11	31.3	110	2100	26
2011/5/14 2:00	0.00	2730	33.5	11	31.3	110	2100	26
2011/5/14 4:00	0.00	2722	33.5	11	31.3	110	2100	26
2011/5/14 6:00	0.00	2718	33.5	10	31.3	110	2100	26
2011/5/14 8:00								
2011/5/14 10:00			・5/1 15:51PLR吸込・吐出弁閉(炉水位低下調査中)					
2011/5/14 12:00								
2011/5/14 14:00								
2011/5/14 16:00								
2011/5/14 18:00								
2011/5/14 20:00								
2011/5/14 22:00								
2011/5/15 0:00								

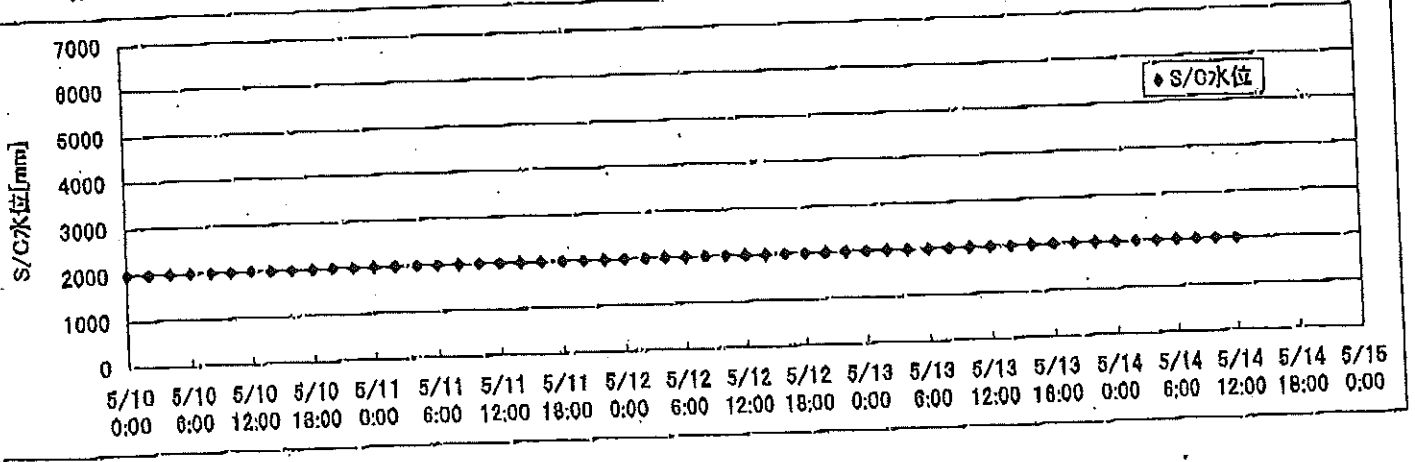
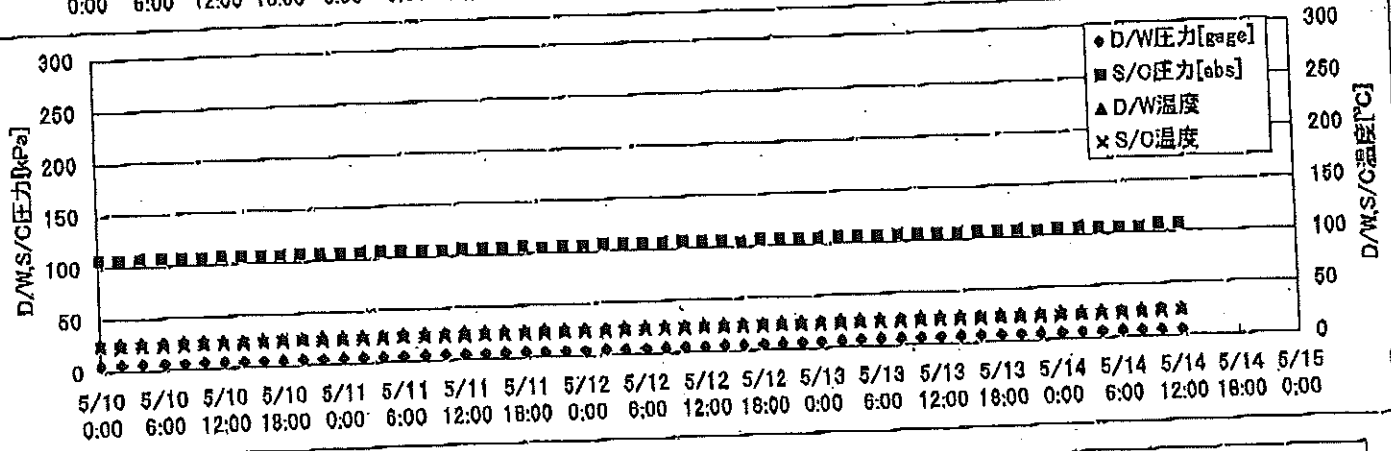
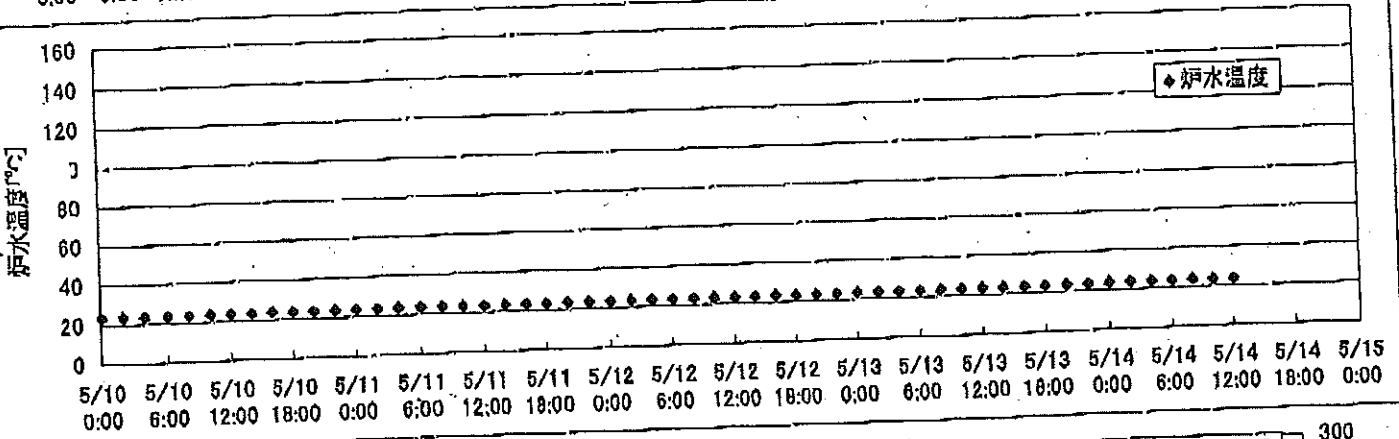
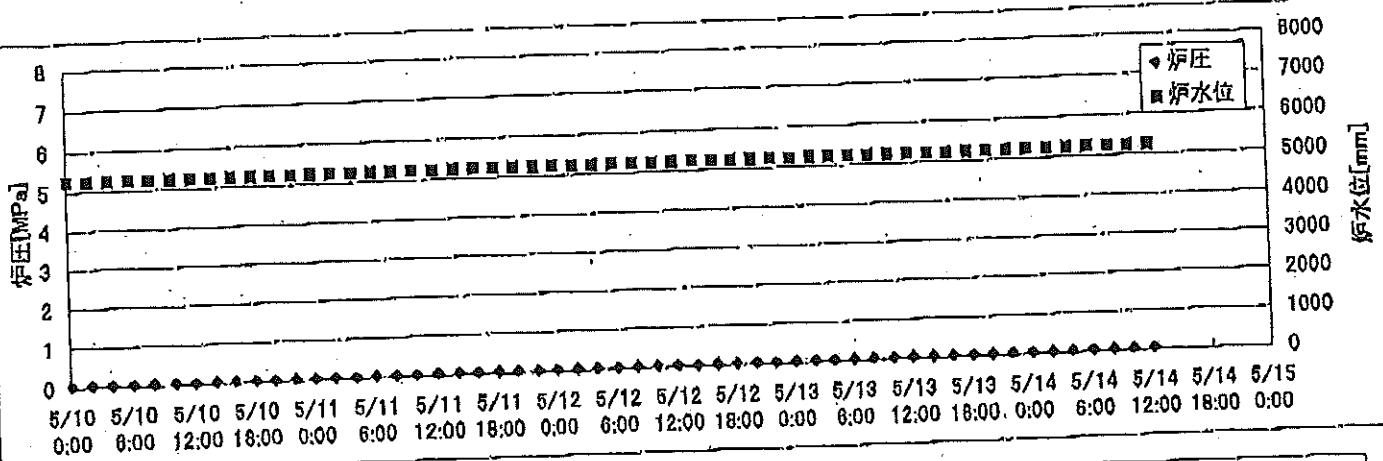
No. 4047 1. 24
 2011年 2月14日 1時12分
 東京電力(株) 原子力発電部 環境安全課

2F-4号機

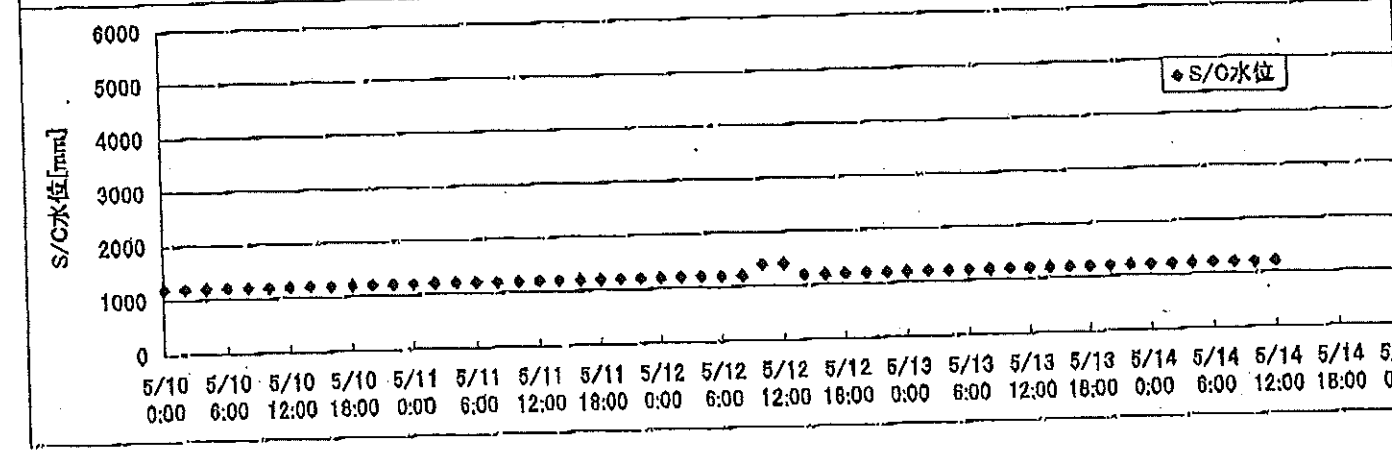
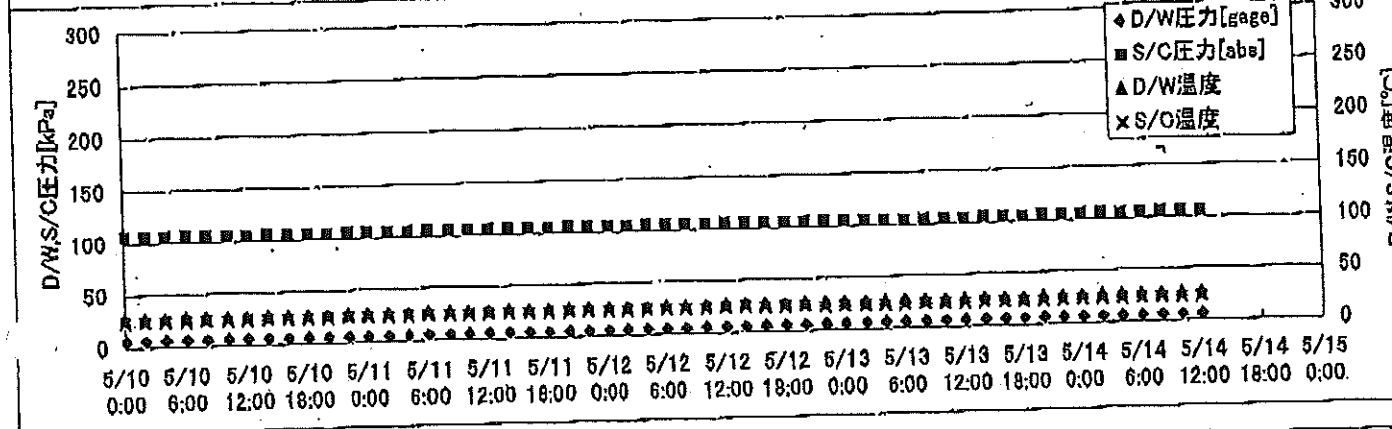
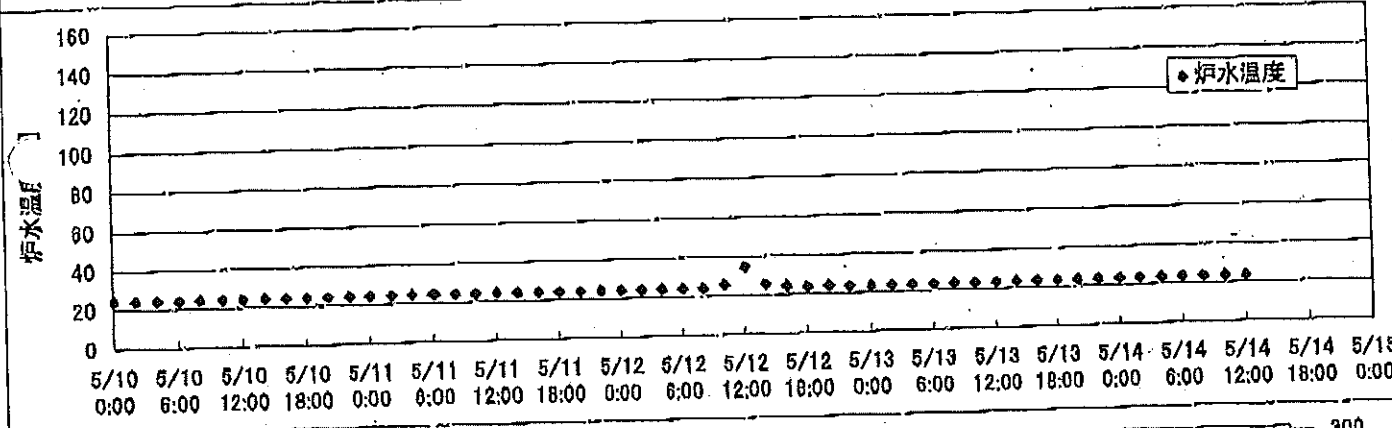
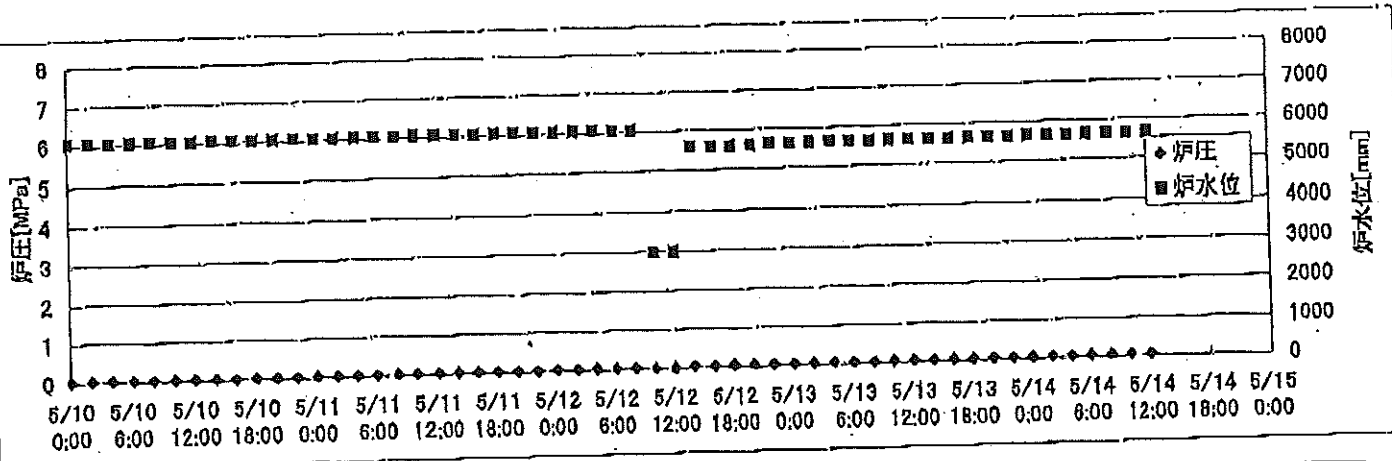
※燃料頂部(TAF)からの水位=炉水位+4200[mm]

時間	炉圧 [MPa (gage)]	炉水位 [mm] アップセット	炉水温度[°C] 給水/スル温度	D/W圧力 [kPa(gage)]	D/W温度 [°C]	S/C圧力 [kPa(abs)]	S/C水位 [mm]	S/C温度 [°C]
2011/5/12 0:00	0.07	4589	26.3	7	29.9	108	2000	27
2011/5/12 2:00	0.07	4589	26.3	7	29.6	108	2000	27
2011/5/12 4:00	0.07	4589	26.3	7	29.7	108	2000	27
2011/5/12 6:00	0.07	4589	26.2	7	29.7	108	2000	27
2011/5/12 8:00	0.07	4589	26.2	7	29.7	108	2000	27
2011/5/12 10:00	0.07	4589	26.2	7	29.6	108	2000	27
2011/5/12 12:00	0.07	4589	26.2	7	29.6	108	2050	27
2011/5/12 14:00	0.07	4589	26.2	7	29.6	108	2050	27
2011/5/12 16:00	0.07	4589	26.2	7	29.8	108	2050	27
2011/5/12 18:00	0.07	4589	26.2	7	29.8	108	2050	27
2011/5/12 20:00	0.07	4589	26.2	8	29.9	108	2050	27
2011/5/12 22:00	0.07	4589	26.2	8	29.6	108	2050	27
2011/5/13 0:00	0.07	4589	26.1	8	29.8	108	2050	27
2011/5/13 2:00	0.07	4589	26.1	8	29.6	108	2050	27
2011/5/13 4:00	0.07	4589	26.1	8	29.6	108	2050	27
2011/5/13 6:00	0.07	4589	26.1	8	29.4	107	2050	27
2011/5/13 8:00	0.07	4589	26.2	8	29.4	107	2050	27
2011/5/13 10:00	0.07	4589	26.2	8	29.7	107	2050	27
2011/5/13 12:00	0.07	4589	26.2	8	29.8	107	2050	27
2011/5/13 14:00	0.07	4589	26.3	9	29.8	107	2050	27
2011/5/13 16:00	0.07	4589	26.3	8	29.8	108	2050	27
2011/5/13 18:00	0.07	4589	26.3	8	29.4	108	2050	27
2011/5/13 20:00	0.07	4589	26.4	8	29.3	108	2000	27
2011/5/13 22:00	0.07	4589	26.4	8	29.6	108	2000	27
2011/5/14 0:00	0.07	4589	26.4	8	29.8	108	2000	27
2011/5/14 2:00	0.07	4589	26.4	8	29.4	108	2000	27
2011/5/14 4:00	0.07	4589	26.4	8	29.3	108	2000	27
2011/5/14 6:00	0.07	4589	26.4	8	29.3	108	2000	27
2011/5/14 8:00								
2011/5/14 10:00								
2011/5/14 12:00								
2011/5/14 14:00								
2011/5/14 16:00								
2011/5/14 18:00								
2011/5/14 20:00								
2011/5/14 22:00								
2011/5/15 0:00								

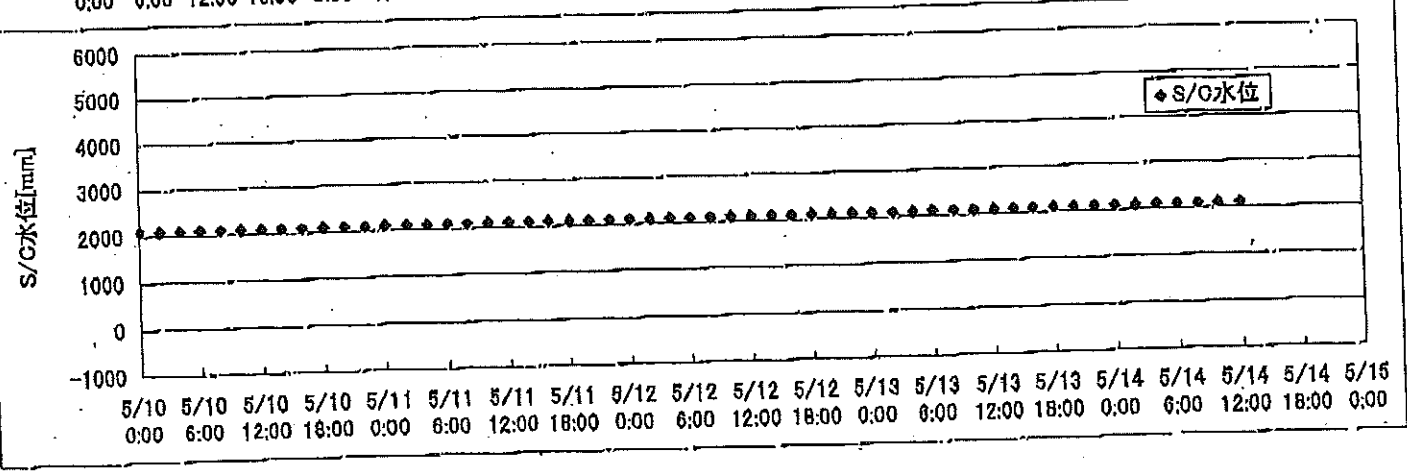
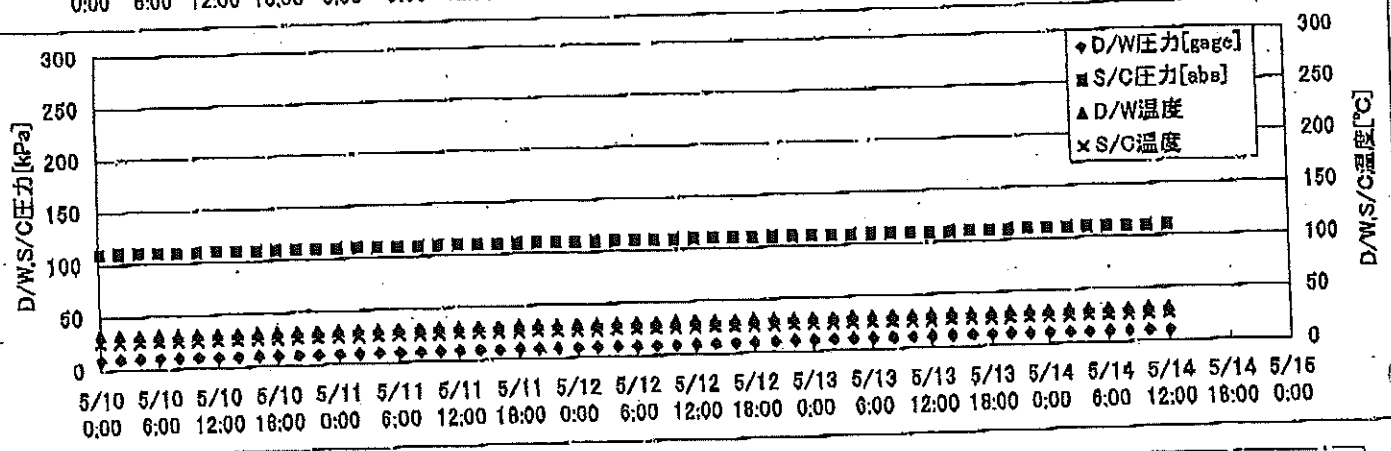
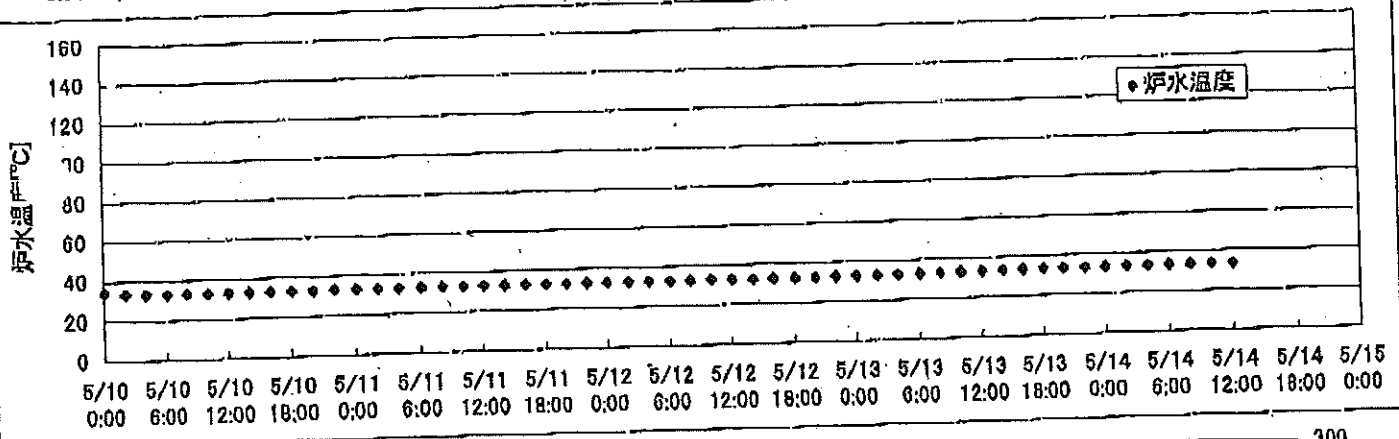
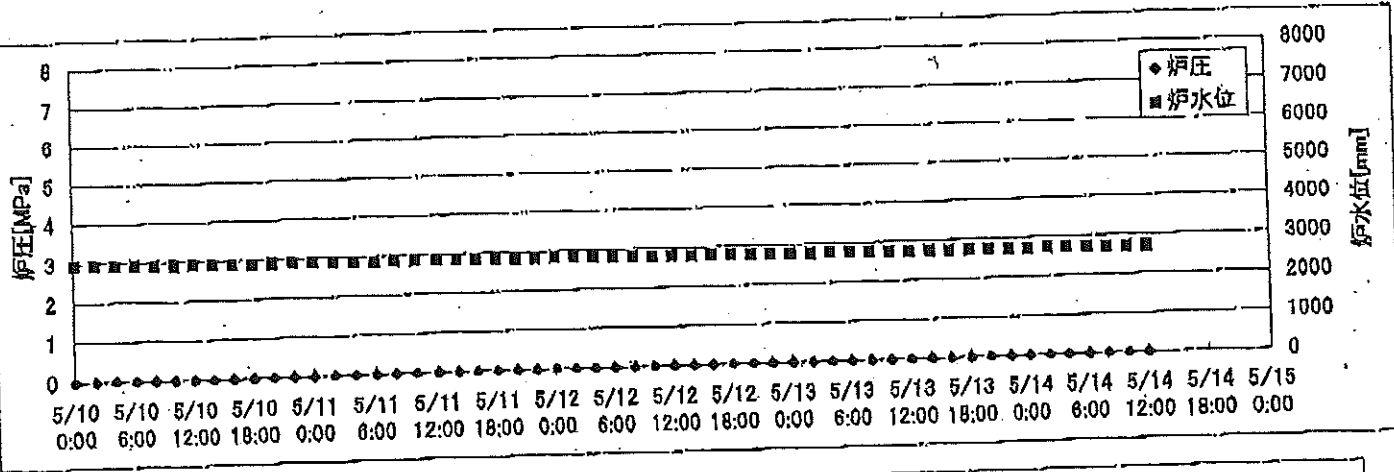
2F-1号機



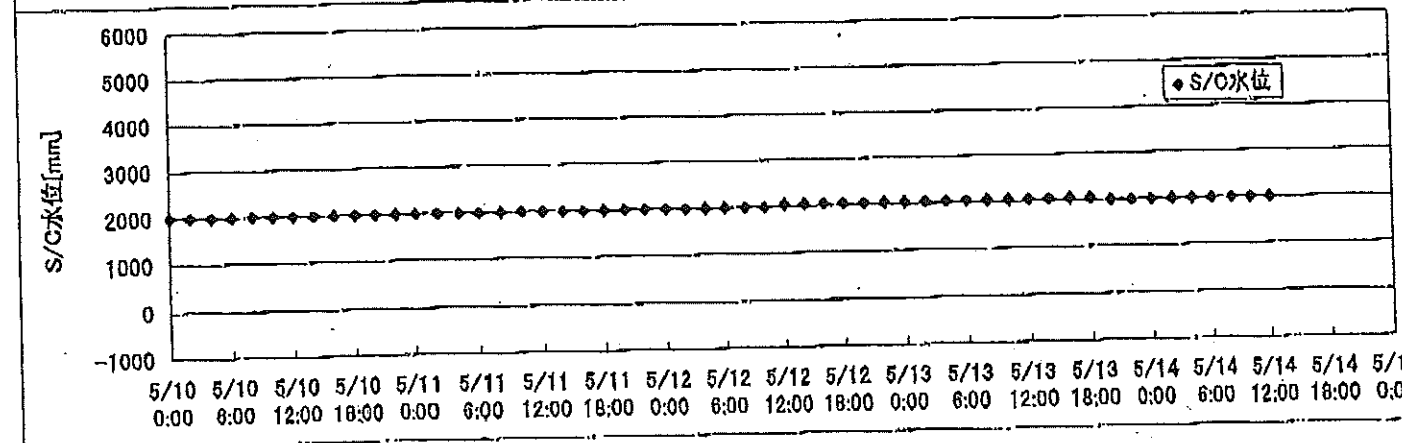
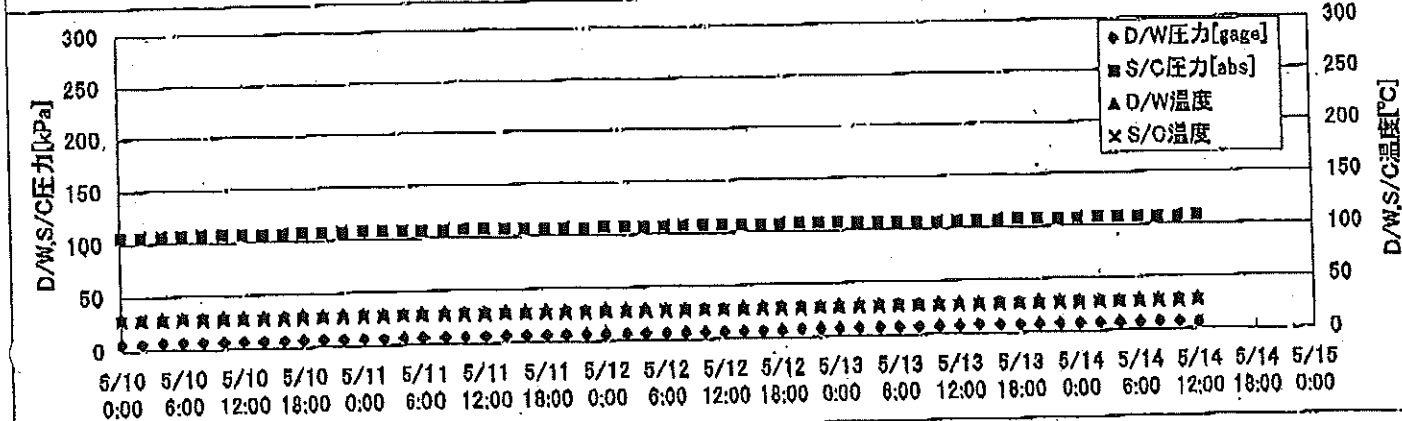
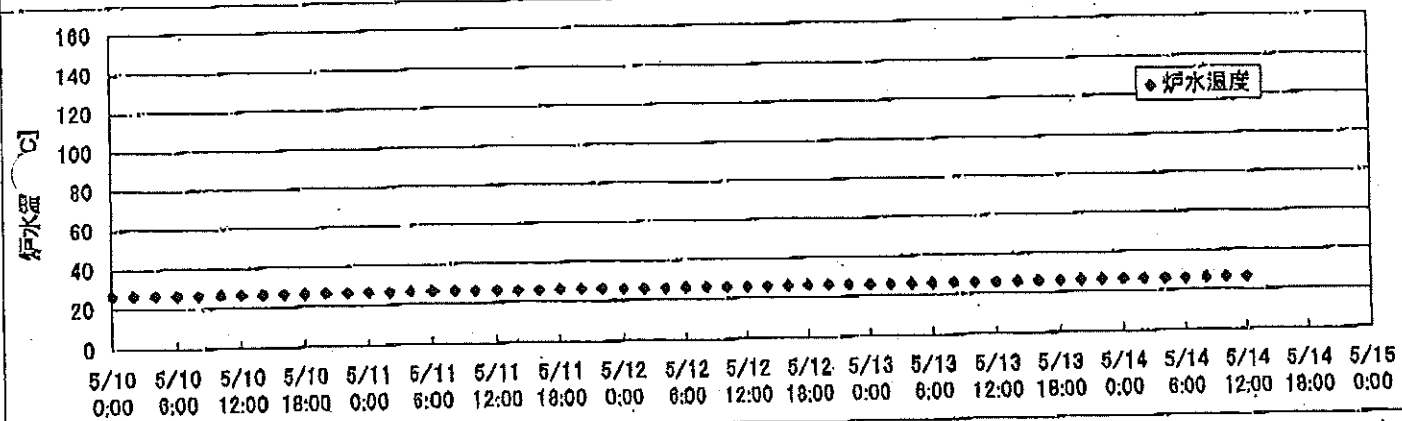
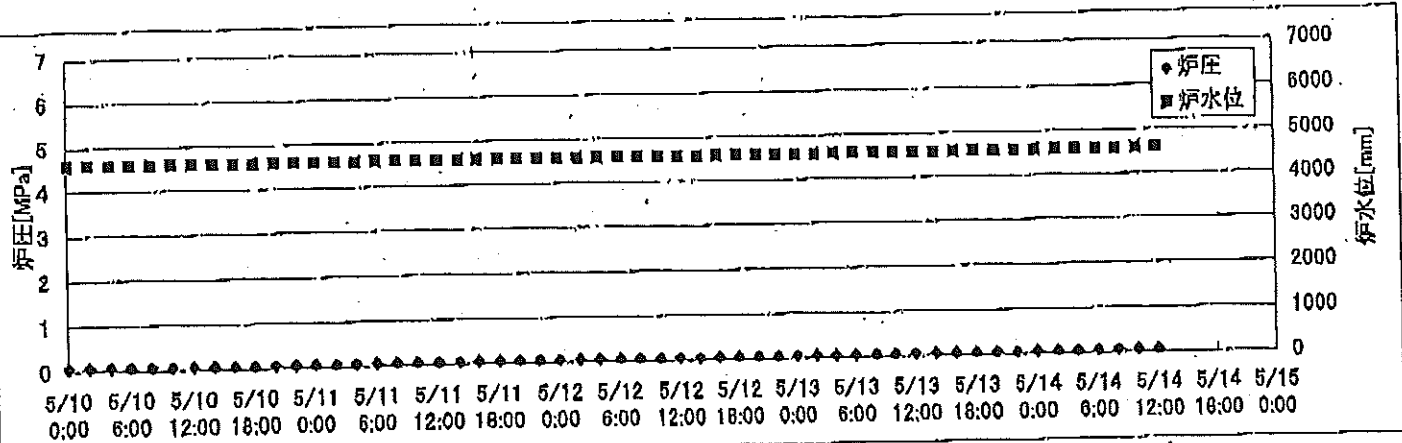
2F-2号機



2F-3号機



2F-4号機



2F-1号機

※燃料頂部(TAF)からの水位=炉水位+4200[mm]

時間	炉圧 [MPa (gage)]	炉水位 [mm] 停止時	炉水温度[°C] 給水ノズル温度	D/W圧力 [kPa(gage)]	D/W温度 [°C]	S/C圧力 [kPa(abs)]	S/C水位 [mm]	S/C温度 [°C]
2011/5/12 0:00	0.06	5250	23.6	5	26.3	107	2000	23
2011/5/12 2:00	0.06	5250	23.6	5	26.3	107	2000	23
2011/5/12 4:00	0.06	5250	23.6	5	26.3	107	2000	23
2011/5/12 6:00	0.06	5250	23.6	5	26.4	107	2000	23
2011/5/12 8:00	0.06	5250	23.6	5	26.4	107	2000	23
2011/5/12 10:00	0.06	5250	23.6	5	26.2	107	2000	23
2011/5/12 12:00	0.06	5250	23.5	5	26.2	107	2000	23
2011/5/12 14:00	0.06	5250	23.6	5	26.2	107	2000	23
2011/5/12 16:00	0.06	5250	23.6	6	26.2	105	2000	23
2011/5/12 18:00	0.06	5250	23.5	6	26.2	107	2000	23
2011/5/12 20:00	0.06	5250	23.5	6	26.2	107	2000	23
2011/5/12 22:00	0.06	5250	23.6	6	26.3	107	1998	23
2011/5/13 0:00	0.06	5250	23.6	7	26.3	107	1998	23
2011/5/13 2:00	0.06	5250	23.6	7	26.3	107	1998	23
2011/5/13 4:00	0.06	5250	23.5	7	26.2	107	1998	23
2011/5/13 6:00	0.06	5250	23.6	7	26.3	107	1997	23
2011/5/13 8:00	0.06	5250	23.6	7	26.2	107	1999	23
2011/5/13 10:00	0.06	5250	23.6	7	26.3	107	1996	23
2011/5/13 12:00	0.06	5250	23.6	7	26.3	107	1998	23
2011/5/13 14:00	0.06	5250	23.6	7	26.3	107	1995	23
2011/5/13 16:00	0.06	5250	23.6	7	26.3	107	1998	23
2011/5/13 18:00	0.06	5250	23.6	7	26.3	107	1996	23
2011/5/13 20:00	0.06	5250	23.7	7	26.3	107	1996	23
2011/5/13 22:00	0.06	5250	23.7	7	26.2	105	1996	23
2011/5/14 0:00	0.06	5250	23.7	7	26.2	107	1996	23
2011/5/14 2:00	0.06	5250	23.8	7	26.2	107	1998	23
2011/5/14 4:00	0.06	5250	23.8	6	26.2	105	1998	23
2011/5/14 6:00	0.06	5250	23.8	6	26.2	105	1998	23
2011/5/14 8:00	0.06	5250	23.8	6	26.2	105	1998	23
2011/5/14 10:00	0.06	5250	23.8	6	26.2	107	1997	24
2011/5/14 12:00	0.06	5250	23.7	6	26.2	107	1998	24
2011/5/14 14:00								
2011/5/14 16:00								
2011/5/14 18:00								
2011/5/14 20:00								
2011/5/14 22:00								
2011/5/15 0:00								

2011年 2月14日 14時17分
 本機電圧監視装置より出力
 5.4

2F-2号機

※燃料頂部(TAF)からの水位=炉水位+4200[mm]

時間	炉圧 [MPa (gage)]	炉水位 [mm] 停止時	炉水温度[°C] 給水/スル温度	D/W圧力 [kPa(gage)]	D/W温度 [°C]	S/C圧力 [kPa(abs)]	S/C水位 [mm]	S/C温度 [°C]
2011/5/12 0:00	0.03	6050	24.2	5.4	27.1	106	1200	24
2011/5/12 2:00	0.03	6050	24.2	5.4	27.1	106	1200	24
2011/5/12 4:00	0.04	6050	24.1	5.4	27.0	106	1200	24
2011/5/12 6:00	0.03	6050	24.1	5.3	27.0	106	1200	24
2011/5/12 8:00	0.03	6050	24.1	5.3	27.0	106	1200	24
2011/5/12 10:00	0.01	3000	25.8	5.7	27.0	106	1400	24
2011/5/12 12:00	0.01	3000	34.8	5.8	27.1	106	1400	24
2011/5/12 14:00	0.06	5600	25.8	5.5	27.6	106	1200	25
2011/5/12 16:00	0.06	5600	24.5	5.7	27.1	106	1200	24
2011/5/12 18:00	0.06	5600	24.1	5.8	27.1	106	1200	24
2011/5/12 20:00	0.06	5600	24.1	5.8	27.1	106	1200	24
2011/5/12 22:00	0.06	5650	23.6	6.2	27.0	106	1200	23
2011/5/13 0:00	0.06	5650	23.6	6.6	27.0	106	1200	23
2011/5/13 2:00	0.06	5650	23.6	6.8	27.1	106	1200	23
2011/5/13 4:00	0.06	5650	23.6	6.9	27.1	105	1200	23
2011/5/13 6:00	0.06	5650	23.6	6.9	27.3	105	1200	23
2011/5/13 8:00	0.06	5650	23.6	6.8	27.0	105	1200	23
2011/5/13 10:00	0.06	5650	23.6	6.8	27.0	106	1200	23
2011/5/13 12:00	0.06	5650	23.6	6.8	27.0	105	1200	23
2011/5/13 14:00	0.06	5650	23.6	6.8	27.0	106	1200	23
2011/5/13 16:00	0.06	5650	23.6	6.7	27.0	106	1200	23
2011/5/13 18:00	0.06	5650	23.6	6.7	27.0	105	1200	23
2011/5/13 20:00	0.06	5650	23.6	6.6	27.0	106	1200	23
2011/5/13 22:00	0.06	5650	23.6	6.6	27.0	106	1200	23
2011/5/14 0:00	0.06	5650	23.6	6.2	27.0	106	1200	23
2011/5/14 2:00	0.06	5650	23.6	6.2	27.0	106	1200	23
2011/5/14 4:00	0.06	5650	23.6	6.1	27.0	105	1200	23
2011/5/14 6:00	0.06	5650	23.6	6.0	27.0	105	1200	23
2011/5/14 8:00	0.06	5650	23.6	6.0	27.0	106	1200	23
2011/5/14 10:00	0.06	5650	23.6	6.0	26.9	106	1200	23
2011/5/14 12:00	0.06	5650	23.5	5.8	26.8	105	1200	23
2011/5/14 14:00								
2011/5/14 16:00								
2011/5/14 18:00								
2011/5/14 20:00								
2011/5/14 22:00								
2011/5/15 0:00								

2F-3号機

※燃料頂部(TAF)からの水位=炉水位+4200[mm]

時間	炉圧 [MPa (gage)]	炉水位 [mm] アップセット	炉水温度[°C] 給水/スル温度	D/W圧力 [kPa(gage)]	D/W温度 [°C]	S/C圧力 [kPa(abs)]	S/C水位 [mm]	S/C温度 [°C]
2011/5/12 0:00	0.00	2834	32.8	9	31.4	110	2100	26
2011/5/12 2:00	0.00	2829	32.8	10	31.2	110	2100	26
2011/5/12 4:00	0.00	2824	32.8	9	31.4	110	2100	26
2011/5/12 6:00	0.00	2820	32.7	9	31.3	110	2100	26
2011/5/12 8:00	0.00	2817	32.7	9	31.3	110	2100	26
2011/5/12 10:00	0.00	2814	32.8	9	31.3	110	2100	26
2011/5/12 12:00	0.00	2808	32.7	9	31.2	110	2100	26
2011/5/12 14:00	0.00	2803	32.7	10	31.2	110	2100	26
2011/5/12 16:00	0.00	2800	32.7	10	31.2	110	2100	26
2011/5/12 18:00	0.00	2793	32.7	10	31.2	110	2100	26
2011/5/12 20:00	0.00	2790	32.7	10	31.2	110	2100	26
2011/5/12 22:00	0.00	2786	32.8	10	31.2	110	2100	26
2011/5/13 0:00	0.00	2783	32.8	11	31.2	110	2100	26
2011/5/13 2:00	0.00	2777	32.9	11	31.2	110	2100	26
2011/5/13 4:00	0.00	2775	33.0	11	31.2	110	2100	26
2011/5/13 6:00	0.00	2770	33.1	11	31.2	110	2100	26
2011/5/13 8:00	0.00	2766	33.2	11	31.2	110	2100	26
2011/5/13 10:00	0.00	2762	33.3	11	31.2	110	2100	26
2011/5/13 12:00	0.00	2758	33.4	11	31.2	110	2100	26
2011/5/13 14:00	0.00	2755	33.5	11	31.3	110	2100	26
2011/5/13 16:00	0.00	2748	33.5	11	31.1	110	2100	26
2011/5/13 18:00	0.00	2744	33.5	11	31.0	110	2100	26
2011/5/13 20:00	0.00	2741	33.5	11	31.2	110	2100	26
2011/5/13 22:00	0.00	2735	33.5	11	31.3	110	2100	26
2011/5/14 0:00	0.00	2730	33.5	11	31.3	110	2100	26
2011/5/14 2:00	0.00	2730	33.5	11	31.3	110	2100	26
2011/5/14 4:00	0.00	2722	33.5	11	31.3	110	2100	26
2011/5/14 6:00	0.00	2718	33.5	10	31.3	110	2100	26
2011/5/14 8:00	0.00	2713	33.5	10	31.3	110	2100	26
2011/5/14 10:00	0.00	2710	33.5	10	31.3	110	2100	26
2011/5/14 12:00	0.00	2703	33.5	10	31.4	110	2100	26
2011/5/14 14:00								
2011/5/14 16:00			5/1 15:51PLR吸込・吐出弁閉(炉水位低下調査中)					
2011/5/14 18:00								
2011/5/14 20:00								
2011/5/14 22:00								
2011/5/15 0:00								

2F-4号機

※燃料頂部(TAF)からの水位=炉水位+4200[mm]

時間	炉圧 [MPa (gage)]	炉水位 [mm] アッフセット	炉水温度[°C] 給水/スル温度	D/W圧力 [kPa(gage)]	D/W温度 [°C]	S/C圧力 [kPa(abs)]	S/C水位 [mm]	S/C温度 [°C]
2011/5/12 0:00	0.07	4589	26.3	7	29.9	108	2000	27
2011/5/12 2:00	0.07	4589	26.3	7	29.6	108	2000	27
2011/5/12 4:00	0.07	4589	26.3	7	29.7	108	2000	27
2011/5/12 6:00	0.07	4589	26.2	7	29.7	108	2000	27
2011/5/12 8:00	0.07	4589	26.2	7	29.7	108	2000	27
2011/5/12 10:00	0.07	4589	26.2	7	29.6	108	2000	27
2011/5/12 12:00	0.07	4589	26.2	7	29.6	108	2050	27
2011/5/12 14:00	0.07	4589	26.2	7	29.6	108	2050	27
2011/5/12 16:00	0.07	4589	26.2	7	29.8	108	2050	27
2011/5/12 18:00	0.07	4589	26.2	7	29.8	108	2050	27
2011/5/12 20:00	0.07	4589	26.2	8	29.9	108	2050	27
2011/5/12 22:00	0.07	4589	26.2	8	29.6	108	2050	27
2011/5/13 0:00	0.07	4589	26.1	8	29.8	108	2050	27
2011/5/13 2:00	0.07	4589	26.1	8	29.6	108	2050	27
2011/5/13 4:00	0.07	4589	26.1	8	29.8	108	2050	27
2011/5/13 6:00	0.07	4589	26.1	8	29.4	107	2050	27
2011/5/13 8:00	0.07	4589	26.2	8	29.4	107	2050	27
2011/5/13 10:00	0.07	4589	26.2	8	29.7	107	2050	27
2011/5/13 12:00	0.07	4589	26.2	8	29.8	107	2050	27
2011/5/13 14:00	0.07	4589	26.3	9	29.8	107	2050	27
2011/5/13 16:00	0.07	4589	26.3	8	29.8	108	2050	27
2011/5/13 18:00	0.07	4589	26.3	8	29.4	108	2050	27
2011/5/13 20:00	0.07	4589	26.4	8	29.3	108	2000	27
2011/5/13 22:00	0.07	4589	26.4	8	29.6	108	2000	27
2011/5/14 0:00	0.07	4589	26.4	8	29.8	108	2000	27
2011/5/14 2:00	0.07	4589	26.4	8	29.4	108	2000	27
2011/5/14 4:00	0.07	4589	26.4	8	29.3	108	2000	27
2011/5/14 6:00	0.07	4589	26.4	8	29.3	108	2000	27
2011/5/14 8:00	0.07	4589	26.4	8	29.3	108	2000	27
2011/5/14 10:00	0.07	4589	26.5	8	29.6	108	2000	27
2011/5/14 12:00	0.07	4589	26.5	7	29.7	108	2000	27
2011/5/14 14:00								
2011/5/14 16:00								
2011/5/14 18:00								
2011/5/14 20:00								
2011/5/14 22:00								
2011/5/15 0:00								