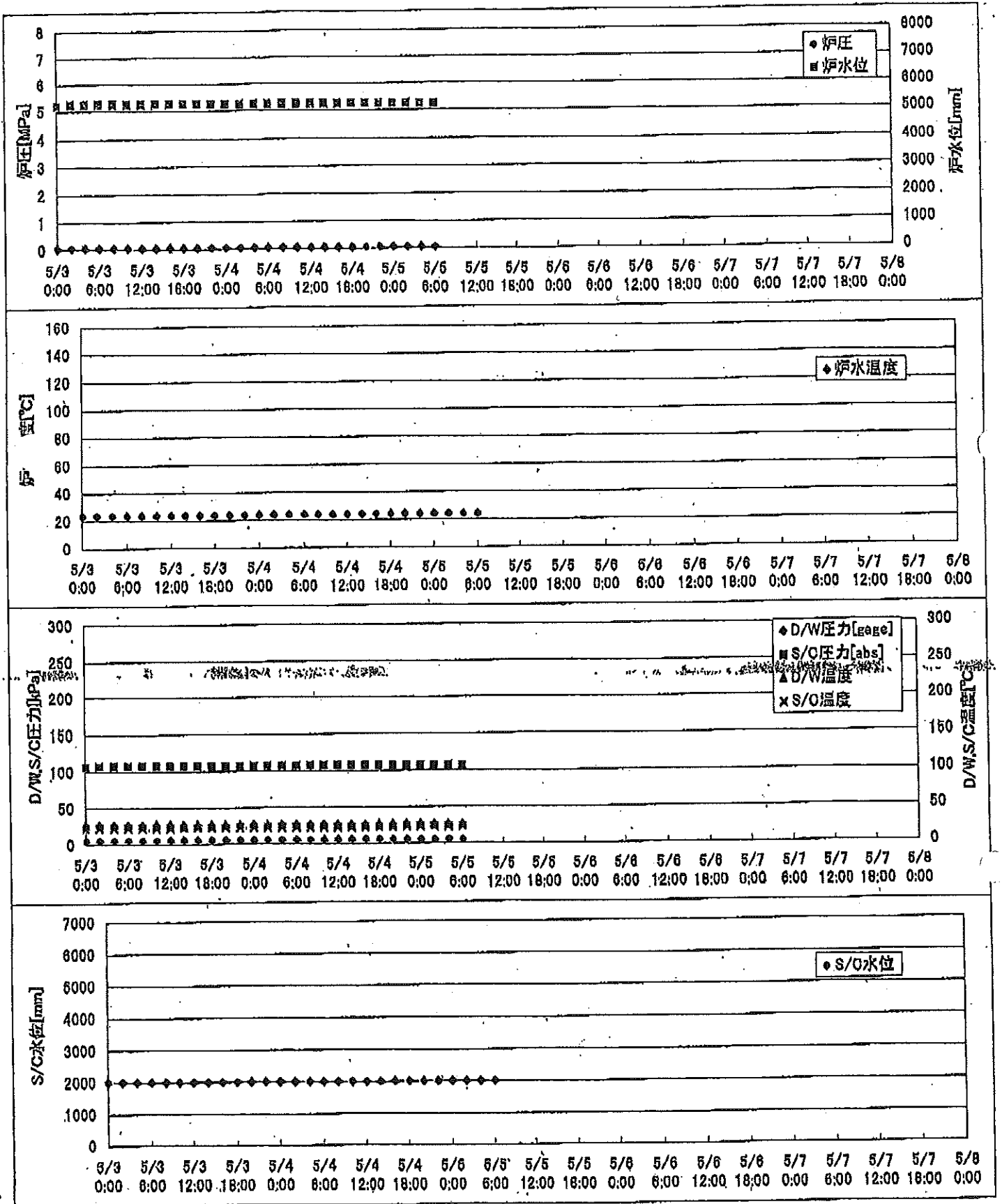
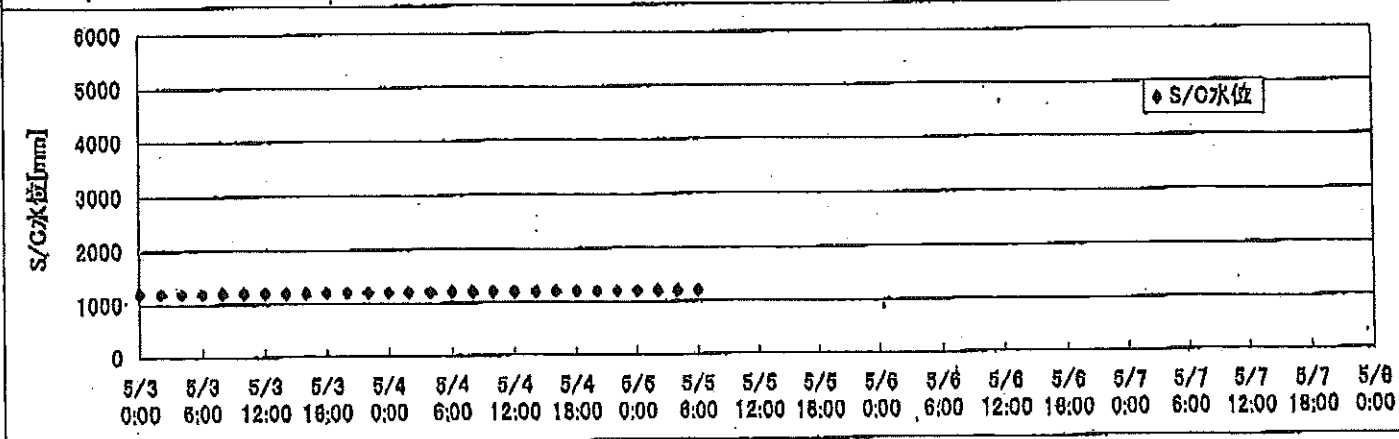
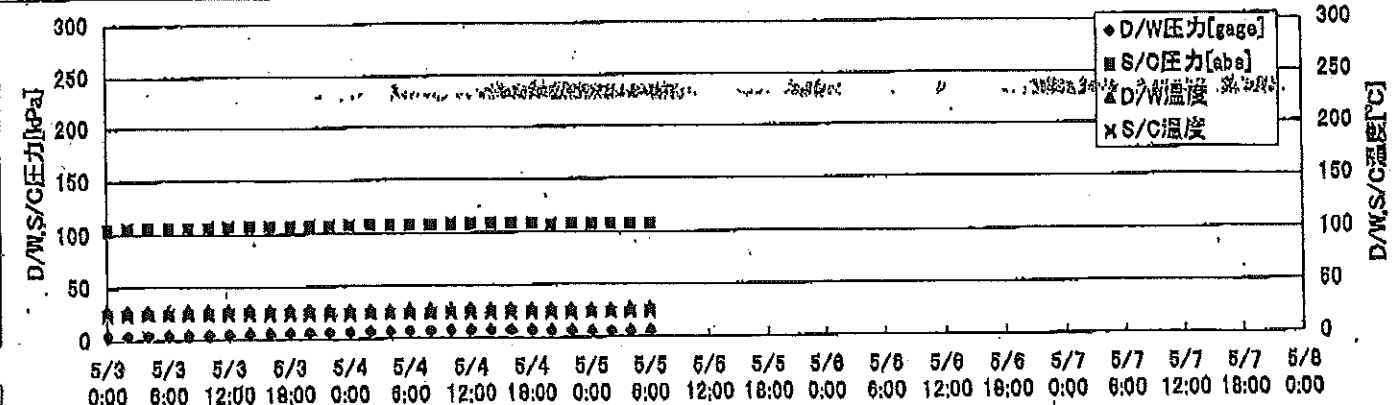
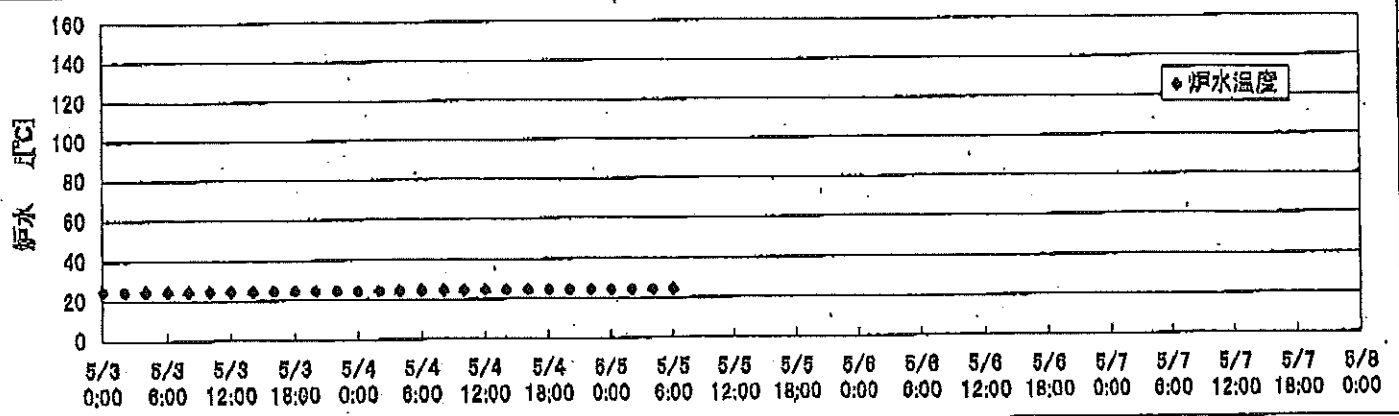
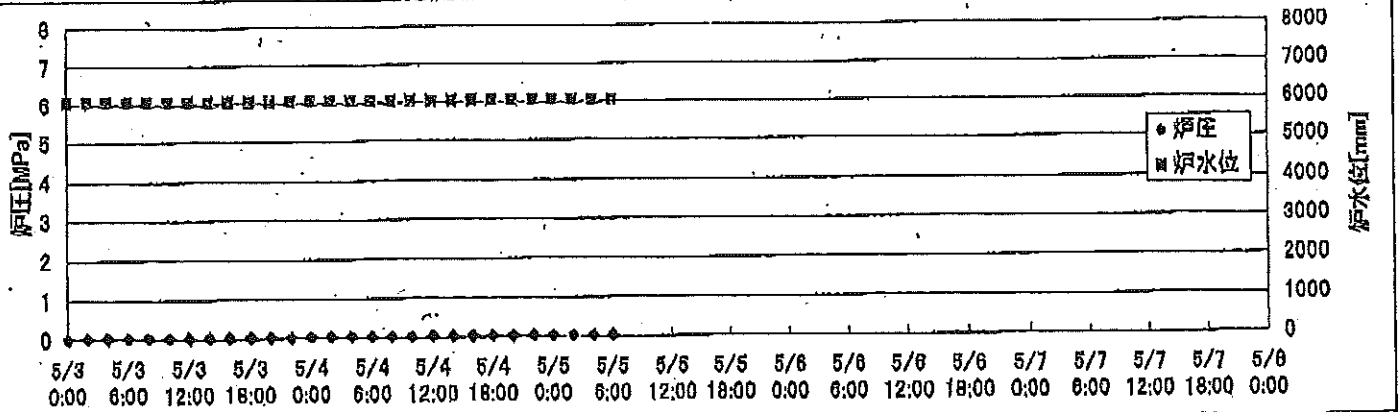


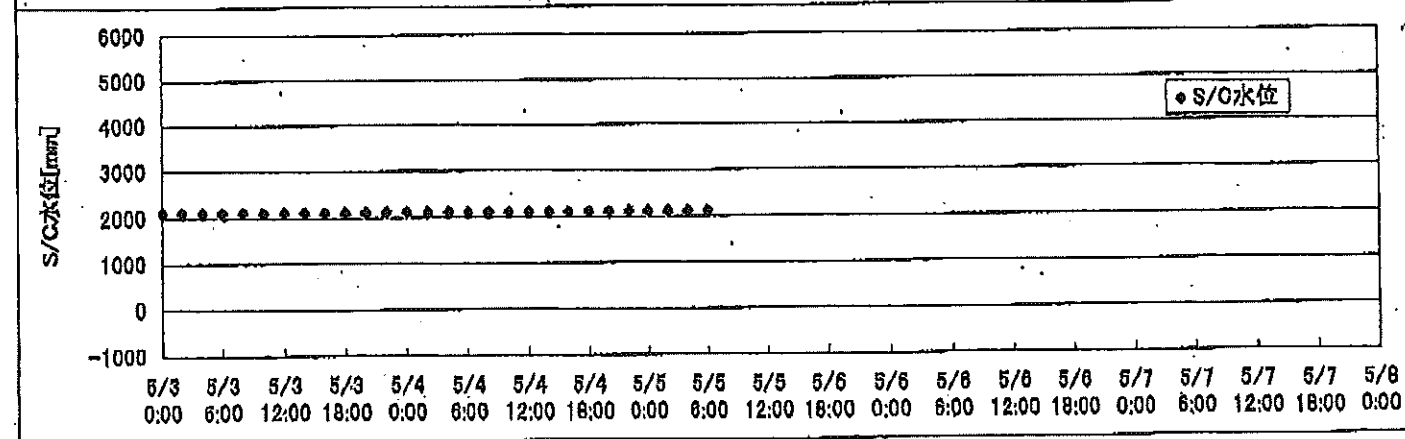
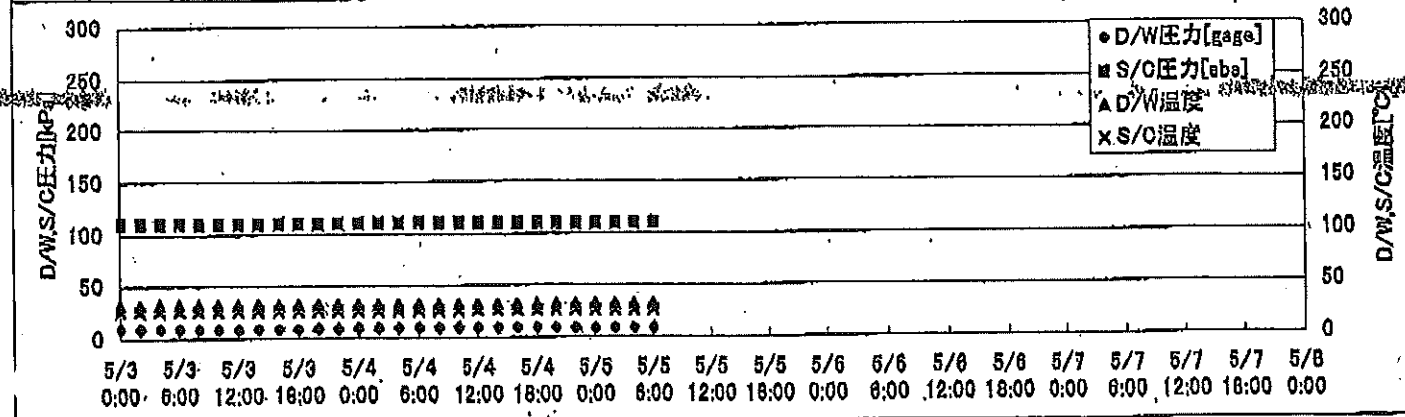
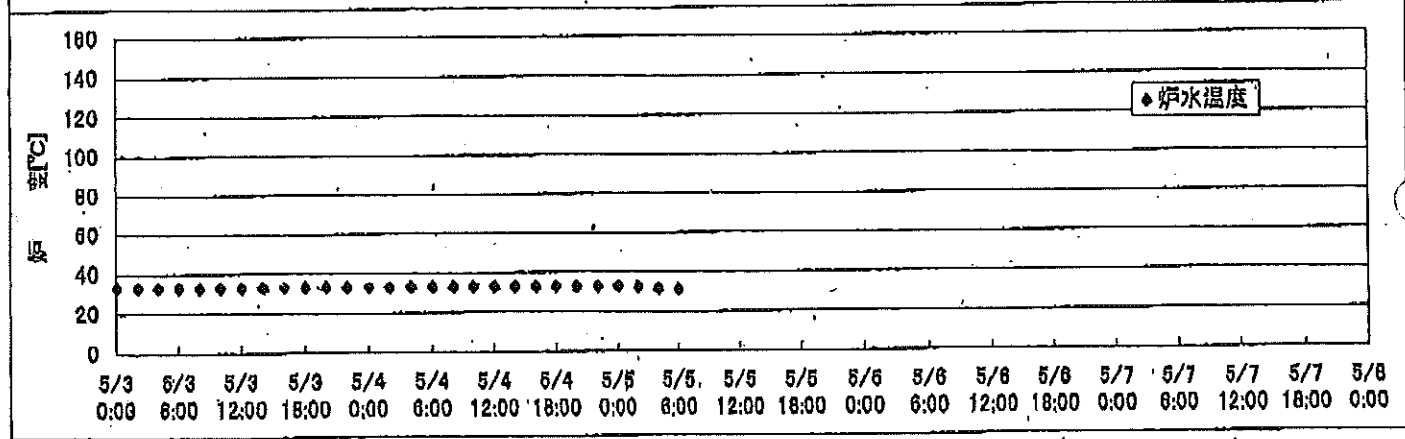
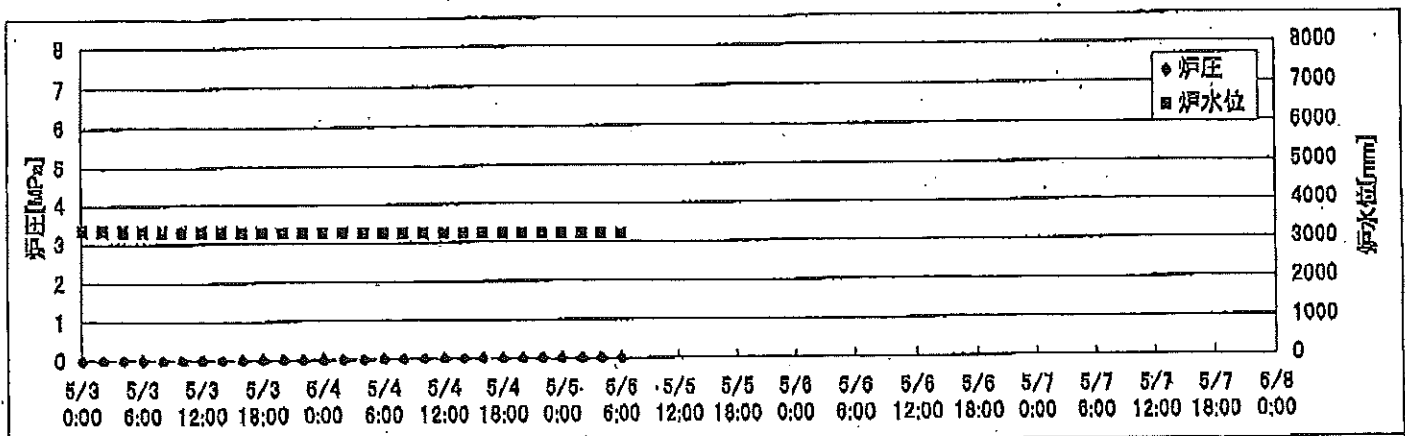
2F-1号機



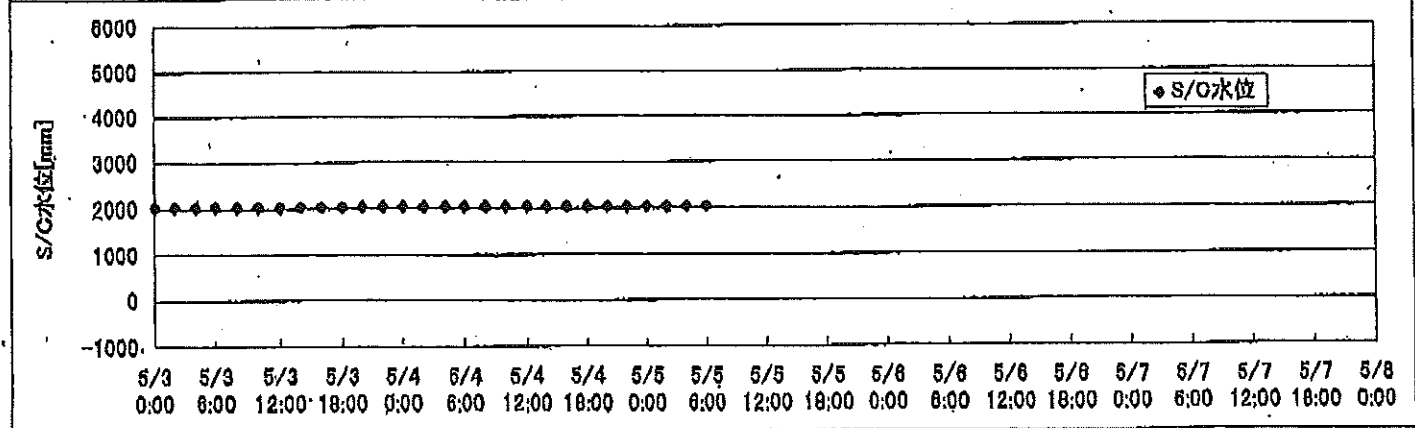
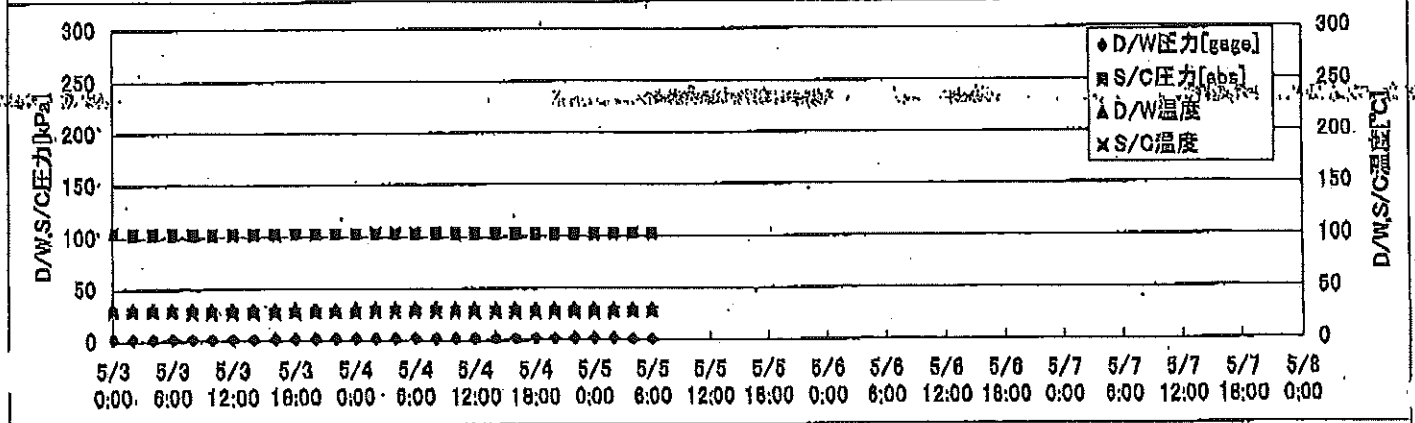
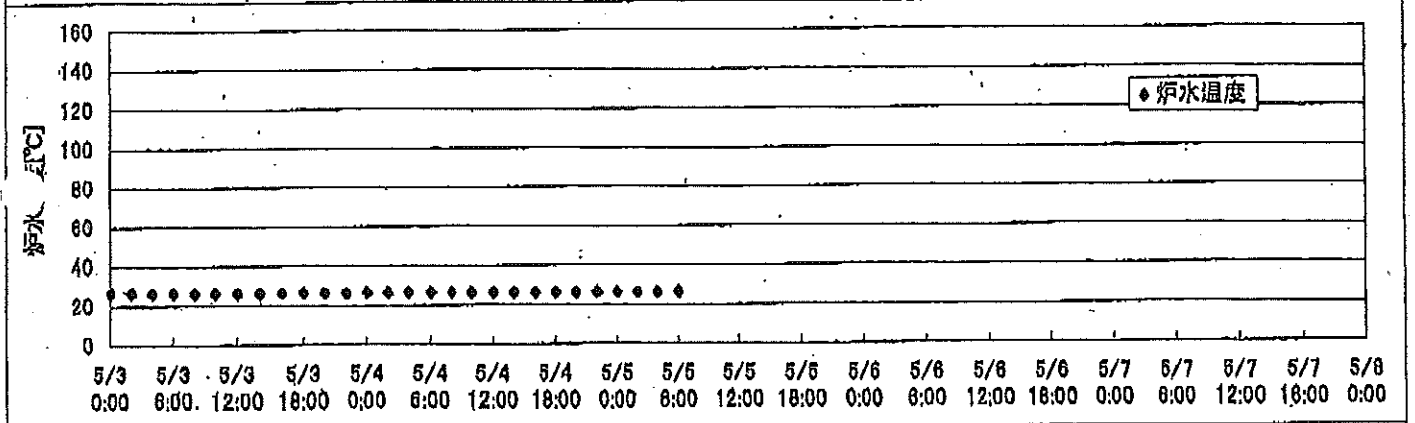
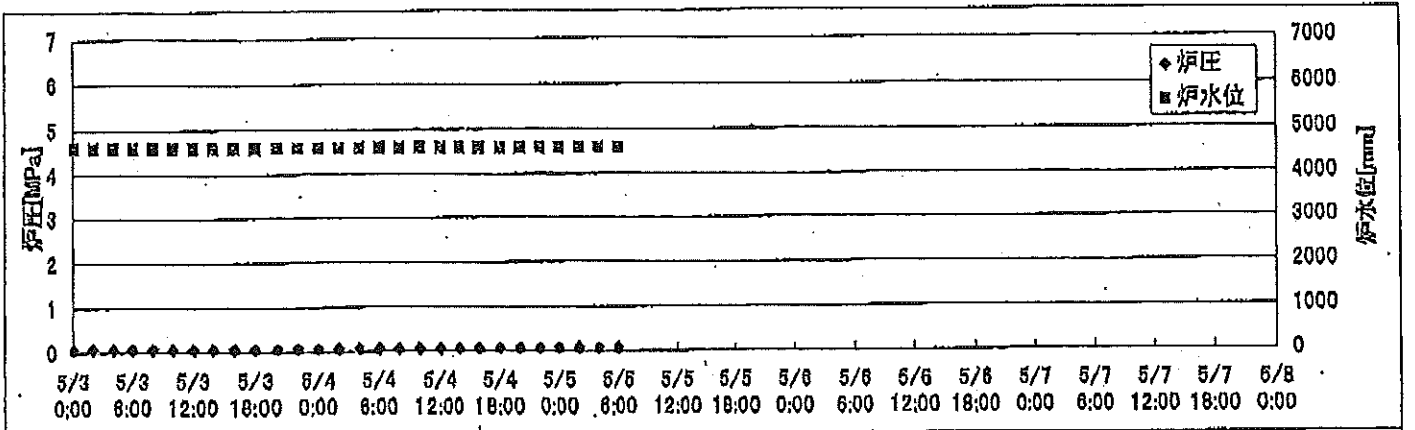
2F-2号機



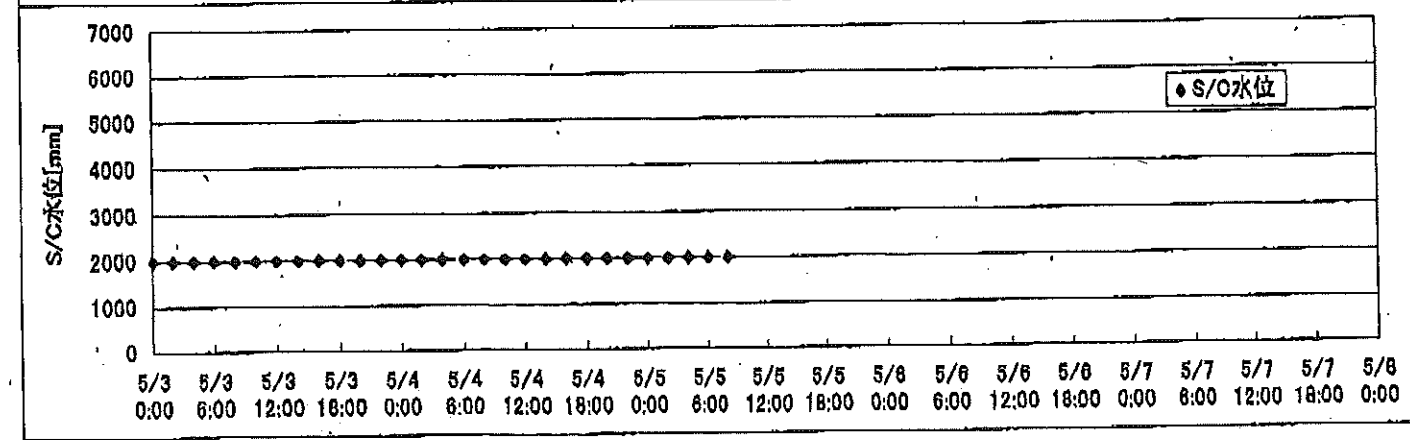
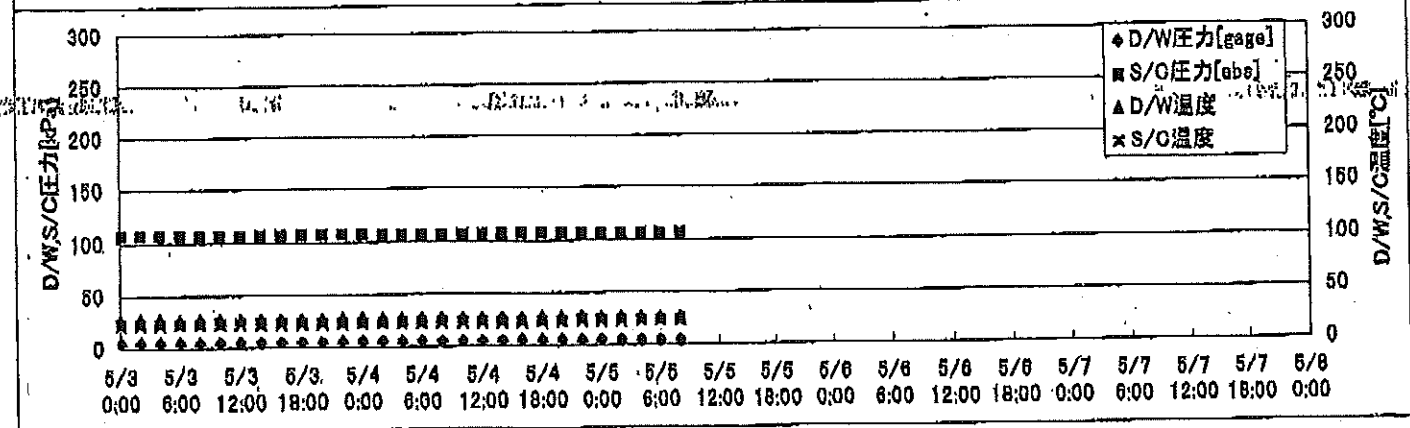
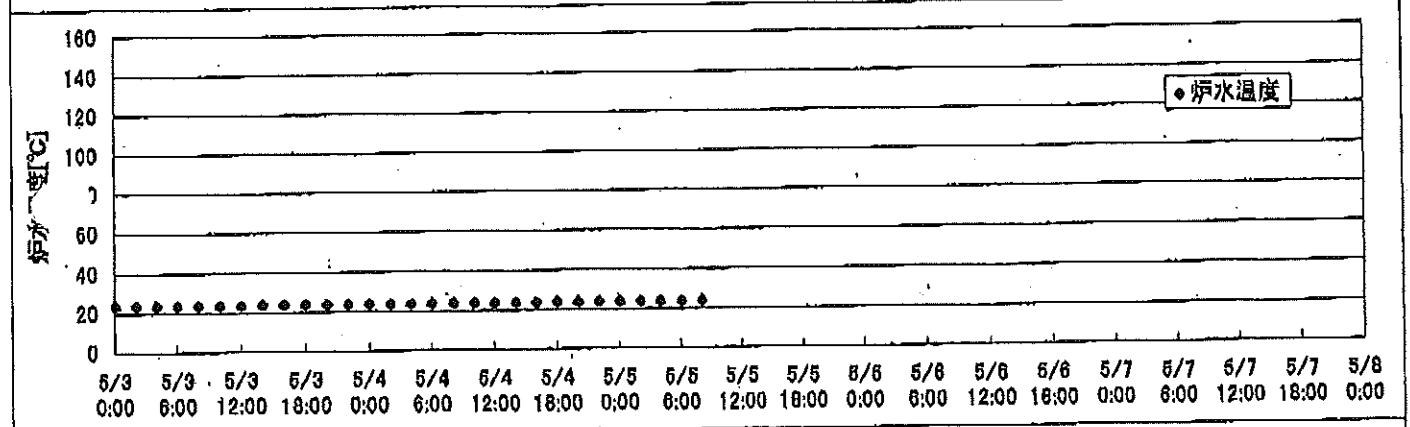
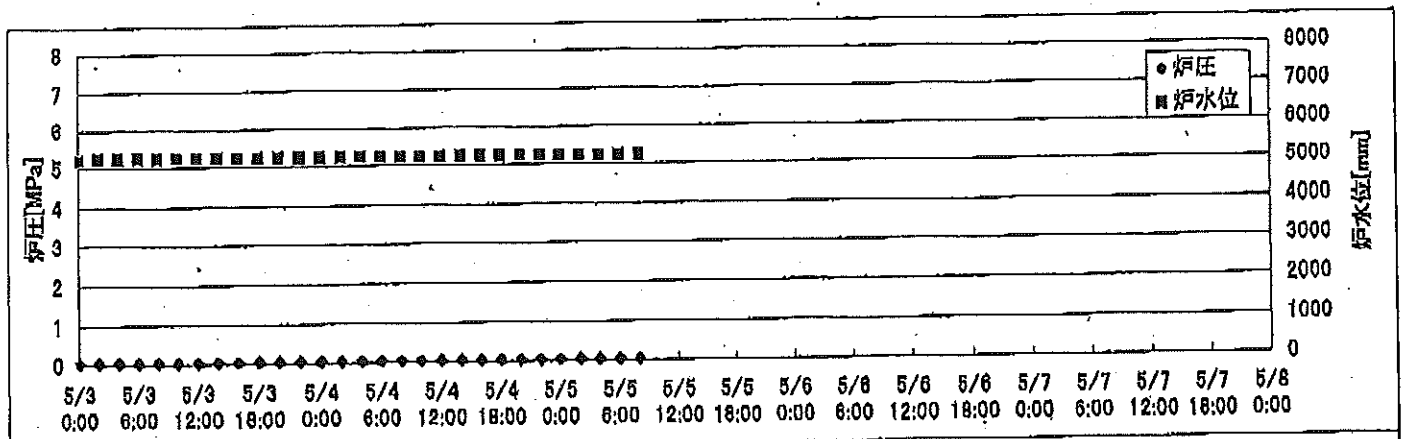
2F-3号機



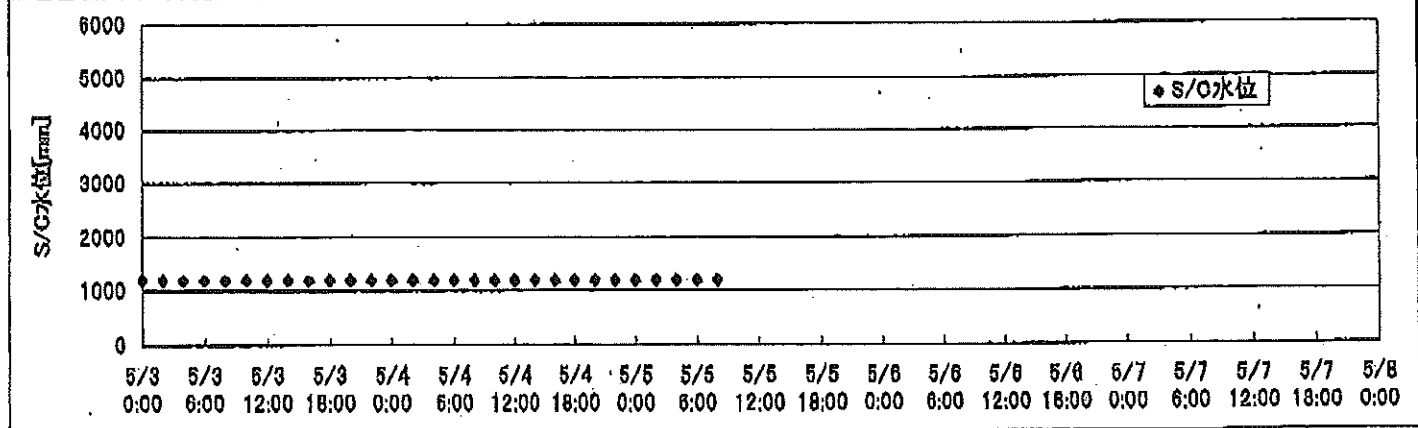
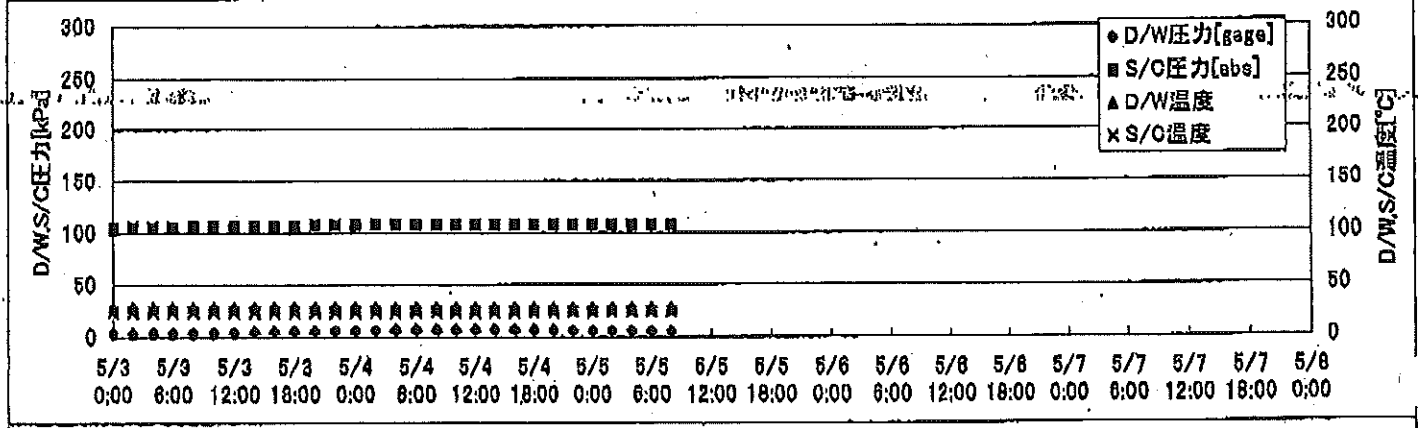
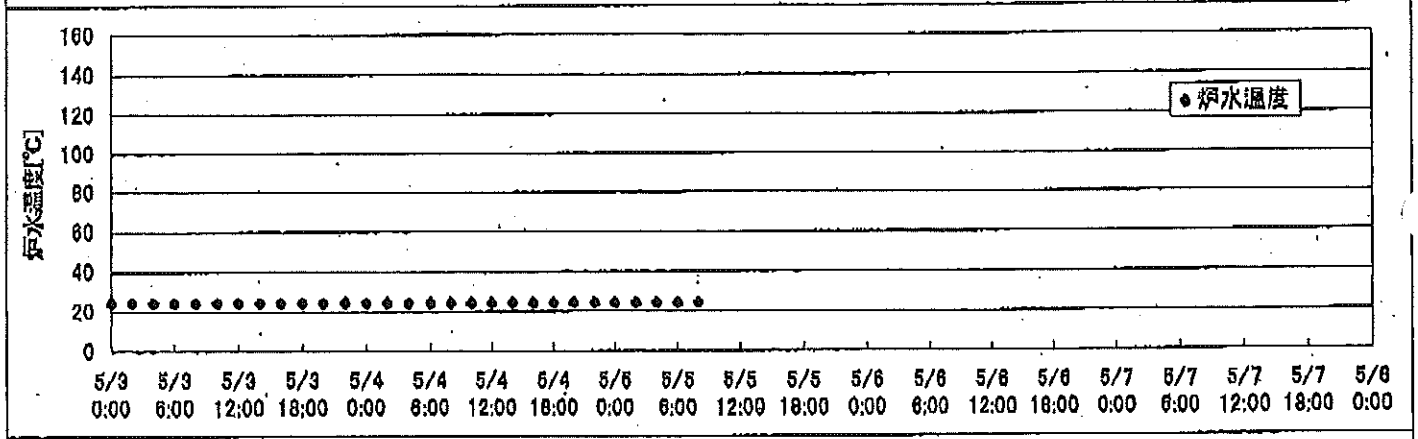
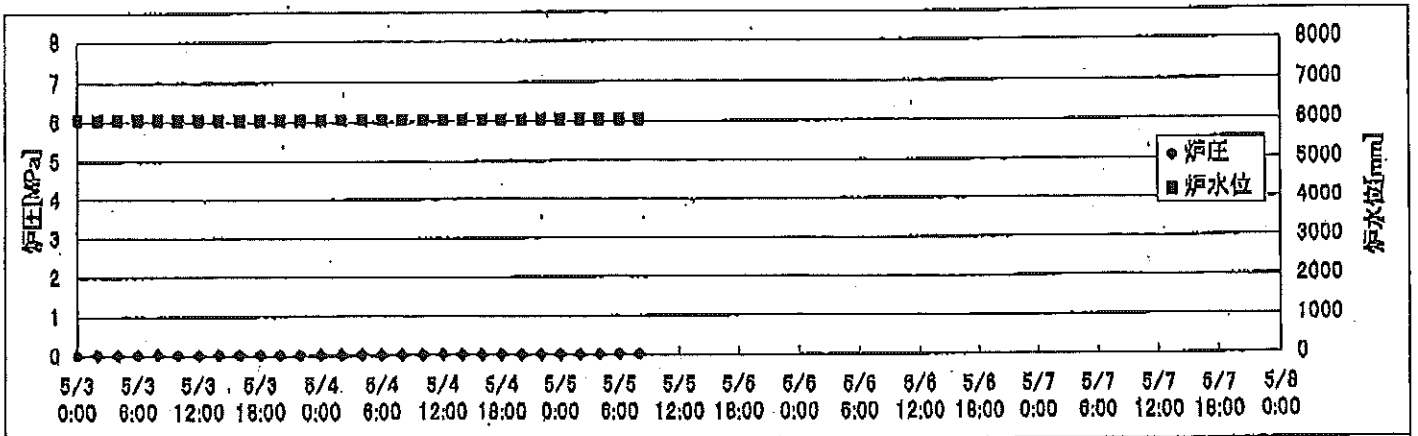
2F-4号機



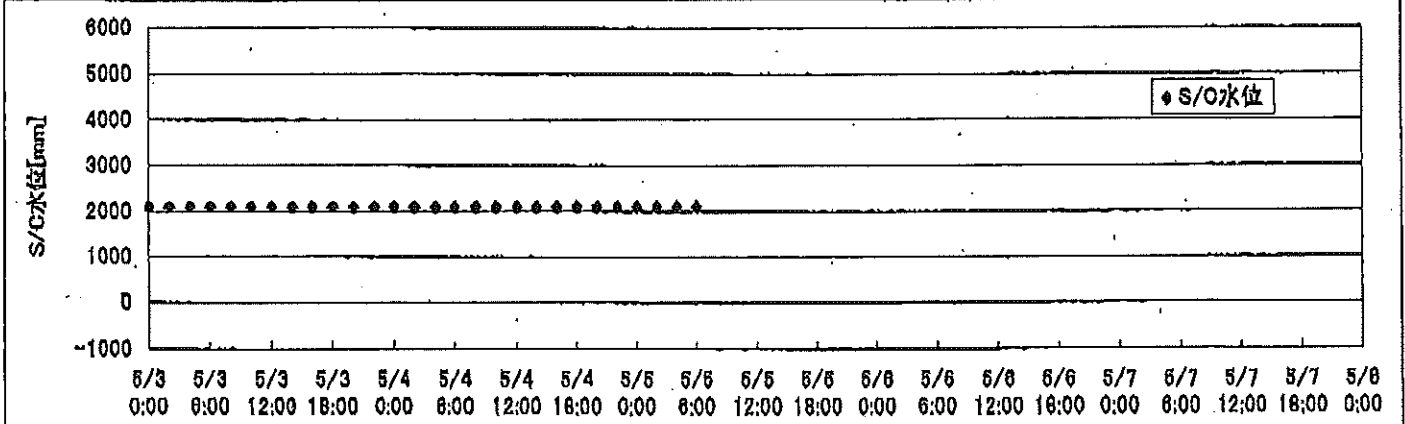
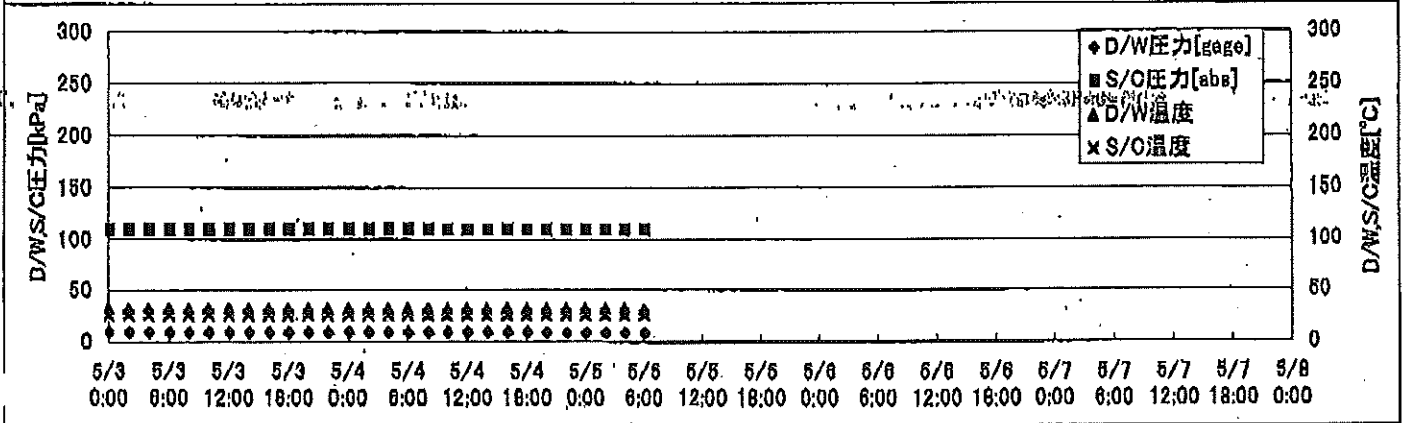
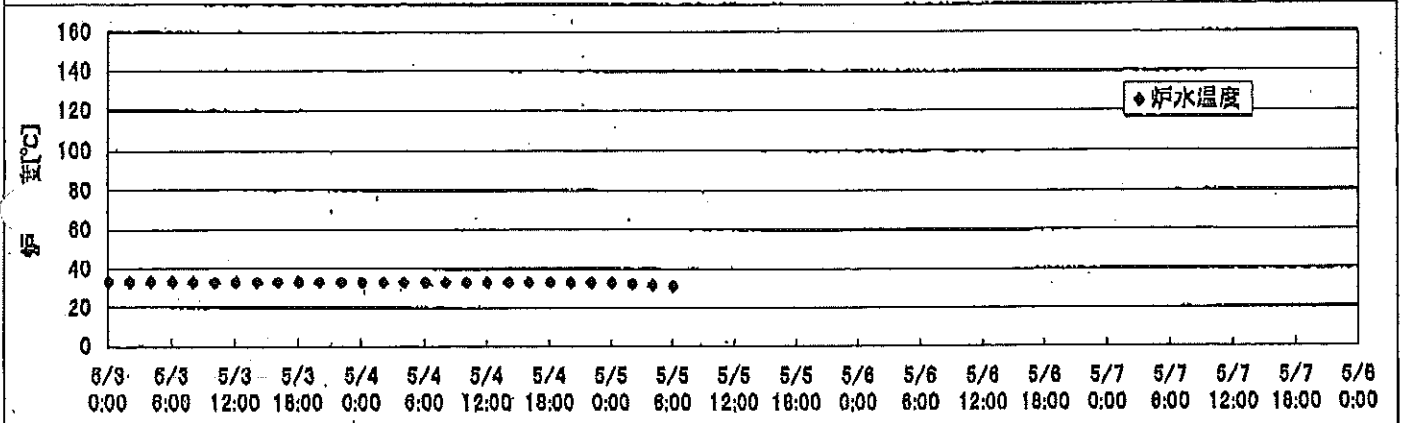
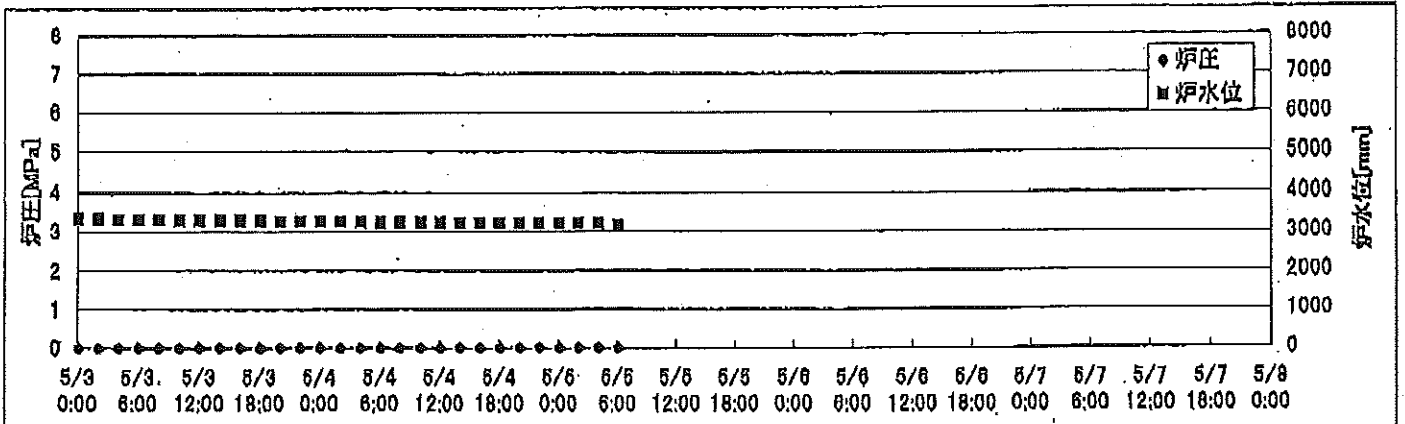
2F-1号機



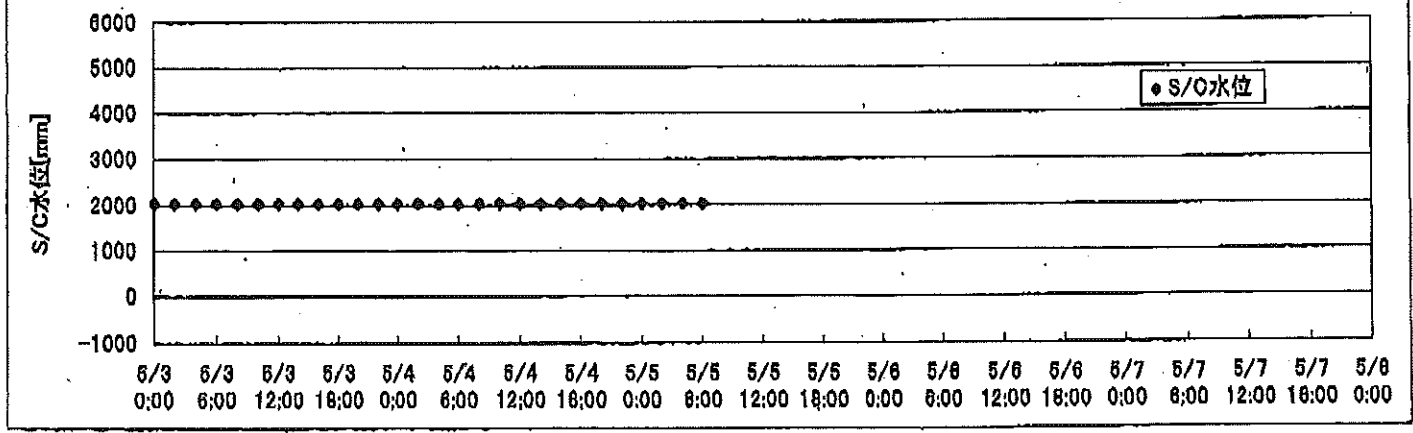
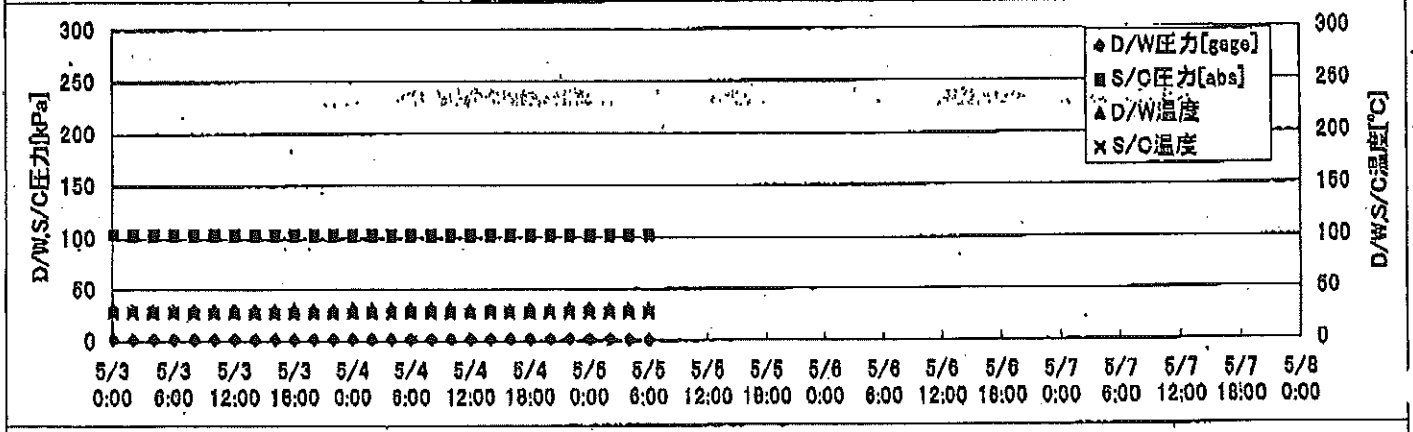
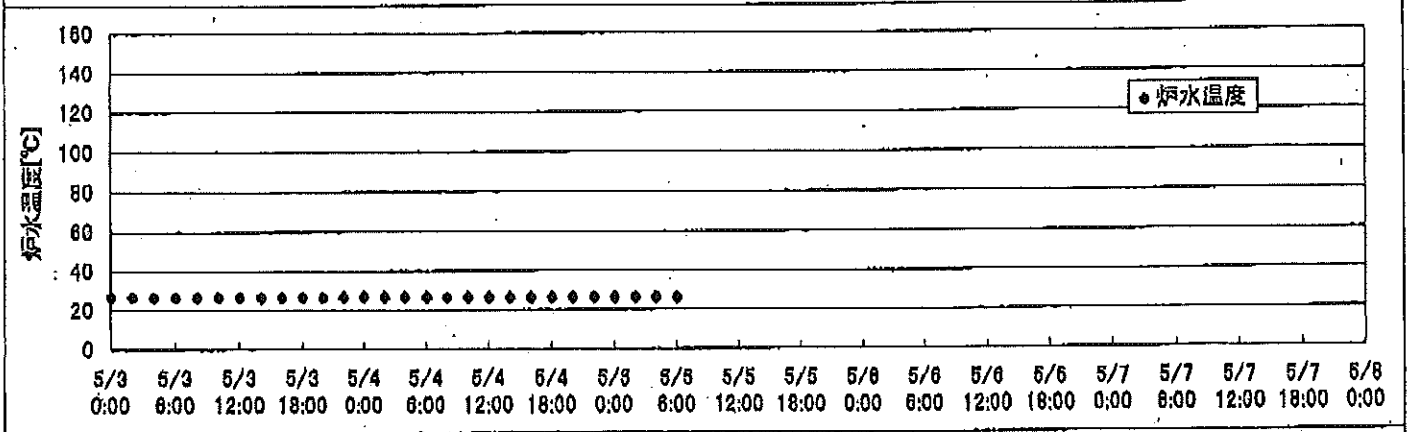
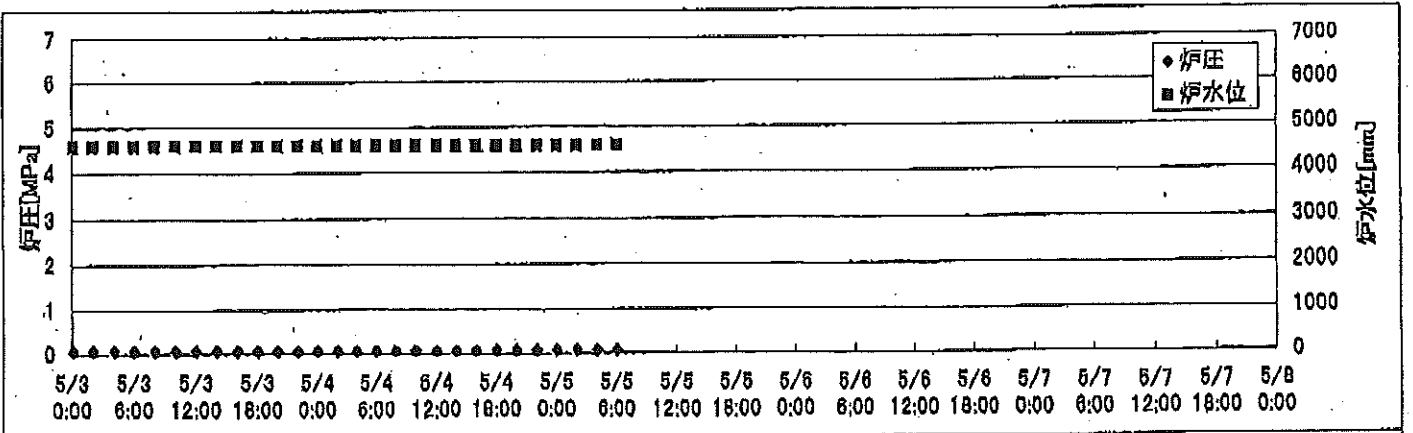
2F-2号機



2F-3号機



2F-4号機



2F-1号機

※燃料頂部(TAF)からの水位=炉水位+4200[mm]

時間	炉圧 [MPa (gage)]	炉水位 [mm] 停止時	炉水温度[°C] 給水/スル温度	D/W圧力 [kPa(gage)]	D/W温度 [°C]	S/C圧力 [kPa(abs)]	S/C水位 [mm]	S/C温度 [°C]
2011/5/4 0:00	0.06	5250	24.0	6	27.3	107	2004	23
2011/5/4 2:00	0.06	5250	24.0	6	27.1	107	2004	23
2011/5/4 4:00	0.06	5250	24.0	6	27.1	107	2003	23
2011/5/4 6:00	0.06	5250	24.0	6	27.1	107	2004	23
2011/5/4 8:00	0.06	5250	24.0	6	27.2	107	2004	23
2011/5/4 10:00	0.06	5250	24.0	6	27.2	107	2004	23
2011/5/4 12:00	0.06	5250	24.0	6	27.2	107	2004	23
2011/5/4 14:00	0.06	5250	24.1	6	27.2	107	2002	23
2011/5/4 16:00	0.06	5250	24.1	6	27.2	107	2003	23
2011/5/4 18:00	0.06	5250	24.1	6	27.2	107	2004	23
2011/5/4 20:00	0.06	5250	24.1	5	27.2	107	2004	23
2011/5/4 22:00	0.06	5250	24.1	5	27.2	107	2004	24
2011/5/5 0:00	0.06	5250	24.1	5	27.1	107	2004	24
2011/5/5 2:00	0.06	5250	24.2	5	27.1	107	2004	24
2011/5/5 4:00	0.06	5250	24.2	5	27.0	107	2005	24
2011/5/5 6:00	0.06	5250	24.2	5	27.0	107	2005	24
2011/5/5 8:00	0.06	5250	24.2	5	27.0	107	2005	24
2011/5/5 10:00	0.06	5250	24.2	5	27.0	107	2003	24
2011/5/5 12:00	0.06	5250	24.2	5	27.0	107	2003	24
2011/5/5 14:00								
2011/5/5 16:00								
2011/5/5 18:00								
2011/5/5 20:00								
2011/5/5 22:00								
2011/5/6 0:00								
2011/5/6 2:00								
2011/5/6 4:00								
2011/5/6 6:00								
2011/5/6 8:00								
2011/5/6 10:00								
2011/5/6 12:00								
2011/5/6 14:00								
2011/5/6 16:00								
2011/5/6 18:00								
2011/5/6 20:00								
2011/5/6 22:00								
2011/5/7 0:00								
2011/5/7 2:00								
2011/5/7 4:00								
2011/5/7 6:00								
2011/5/7 8:00								
2011/5/7 10:00								
2011/5/7 12:00								
2011/5/7 14:00								
2011/5/7 16:00								
2011/5/7 18:00								
2011/5/7 20:00								
2011/5/7 22:00								
2011/5/8 0:00								

2F-2号機

※燃料頂部(TAF)からの水位=炉水位+4200[mm]

時間	炉圧 [MPa (gage)]	炉水位 [mm] 停止時	炉水温度[°C] 給水/スル温度	D/W圧力 [kPa(gage)]	D/W温度 [°C]	S/C圧力 [kPa(abs)]	S/C水位 [mm]	S/C温度 [°C]
2011/5/4 0:00	0.03	6050	24.5	6.3	27.9	107	1200	24
2011/5/4 2:00	0.03	6050	24.5	6.6	27.8	107	1200	24
2011/5/4 4:00	0.04	6050	24.5	6.9	27.8	108	1200	24
2011/5/4 6:00	0.03	6050	24.5	7.1	27.8	108	1200	24
2011/5/4 8:00	0.03	6050	24.5	7.2	27.8	108	1200	24
2011/5/4 10:00	0.03	6050	24.4	7.1	27.8	108	1200	24
2011/5/4 12:00	0.04	6050	24.5	7.1	27.8	109	1200	24
2011/5/4 14:00	0.03	6050	24.5	7.1	27.8	108	1200	24
2011/5/4 16:00	0.03	6050	24.5	7.0	27.8	108	1200	24
2011/5/4 18:00	0.04	6050	24.5	6.8	27.8	108	1200	24
2011/5/4 20:00	0.03	6050	24.5	6.5	27.8	107	1200	24
2011/5/4 22:00	0.03	6050	24.5	6.2	27.6	108	1200	24
2011/5/5 0:00	0.04	6050	24.5	5.9	27.5	107	1200	24
2011/5/5 2:00	0.03	6050	24.5	5.8	27.6	107	1200	24
2011/5/5 4:00	0.03	6050	24.5	5.7	27.6	107	1200	24
2011/5/5 6:00	0.04	6050	24.5	5.4	27.6	107	1200	24
2011/5/5 8:00	0.03	6050	24.5	5.2	27.6	107	1200	24
2011/5/5 10:00	0.03	6050	24.5	5.1	27.6	107	1200	24
2011/5/5 12:00	0.03	6050	24.6	5.1	27.4	107	1200	24
2011/5/5 14:00								
2011/5/5 16:00								
2011/5/5 18:00								
2011/5/5 20:00								
2011/5/5 22:00								
2011/5/6 0:00								
2011/5/6 2:00								
2011/5/6 4:00								
2011/5/6 6:00								
2011/5/6 8:00								
2011/5/6 10:00								
2011/5/6 12:00								
2011/5/6 14:00								
2011/5/6 16:00								
2011/5/6 18:00								
2011/5/6 20:00								
2011/5/6 22:00								
2011/5/7 0:00								
2011/5/7 2:00								
2011/5/7 4:00								
2011/5/7 6:00								
2011/5/7 8:00								
2011/5/7 10:00								
2011/5/7 12:00								
2011/5/7 14:00								
2011/5/7 16:00								
2011/5/7 18:00								
2011/5/7 20:00								
2011/5/7 22:00								
2011/5/8 0:00								

2F-3号機

※燃料頂部(TAF)からの水位=炉水位+4200[mm]

時間	炉圧 [MPa] (gage)	炉水位 [mm] アブセット	炉水温度[°C] 給水/スル温度	D/W圧力 [kPa(gage)]	D/W温度 [°C]	S/C圧力 [kPa(abs)]	S/C水位 [mm]	S/C温度 [°C]
2011/5/4 0:00	0.00	3272	332	9	31.8	110	2100	26
2011/5/4 2:00	0.00	3268	331	9	31.9	110	2100	26
2011/5/4 4:00	0.00	3262	330	10	31.9	110	2100	26
2011/5/4 6:00	0.00	3255	330	9	31.8	110	2100	26
2011/5/4 8:00	0.00	3253	330	9	31.8	110	2100	26
2011/5/4 10:00	0.00	3247	330	9	31.8	110	2100	26
2011/5/4 12:00	0.00	3246	330	9	31.8	110	2100	26
2011/5/4 14:00	0.00	3240	330	10	31.8	110	2100	26
2011/5/4 16:00	0.00	3234	331	10	31.8	110	2100	26
2011/5/4 18:00	0.00	3230	330	9	31.7	110	2100	26
2011/5/4 20:00	0.00	3225	330	9	31.8	110	2100	26
2011/5/4 22:00	0.00	3220	330	9	31.8	110	2100	26
2011/5/5 0:00	0.00	3215	330	9	31.7	110	2100	26
2011/5/5 2:00	0.00	3209	326	9	31.7	110	2100	26
2011/5/5 4:00	0.00	3199	318	9	31.7	110	2100	26
2011/5/5 6:00	0.00	3192	313	9	31.5	110	2100	26
2011/5/5 8:00	0.00	3188	311	9	31.4	110	2100	26
2011/5/5 10:00	0.00	3182	310	9	31.4	110	2100	26
2011/5/5 12:00	0.00	3177	309	9	31.4	110	2100	26
2011/5/5 14:00								
2011/5/5 16:00								
2011/5/5 18:00								
2011/5/5 20:00								
2011/5/5 22:00								
2011/5/6 0:00								
2011/5/6 2:00								
2011/5/6 4:00								
2011/5/6 6:00								
2011/5/6 8:00								
2011/5/6 10:00								
2011/5/6 12:00								
2011/5/6 14:00								
2011/5/6 16:00								
2011/5/6 18:00								
2011/5/6 20:00								
2011/5/6 22:00								
2011/5/7 0:00								
2011/5/7 2:00								
2011/5/7 4:00								
2011/5/7 6:00								
2011/5/7 8:00								
2011/5/7 10:00								
2011/5/7 12:00								
2011/5/7 14:00								
2011/5/7 16:00								
2011/5/7 18:00								
2011/5/7 20:00								
2011/5/7 22:00								
2011/5/8 0:00								

-5/1 15:51PLR感込-吐出弁閉(炉水位低下調査中)

