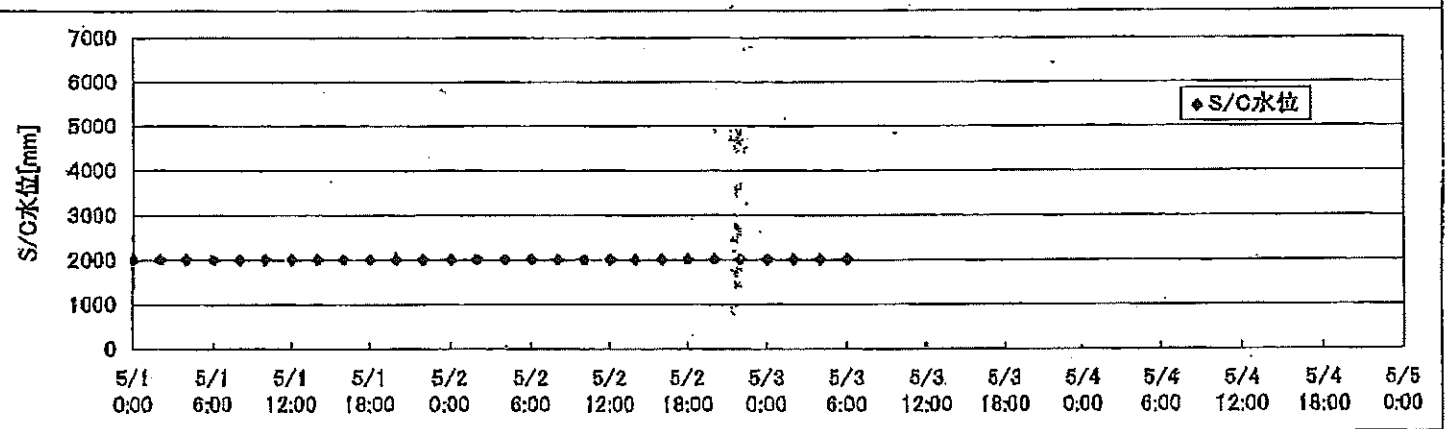
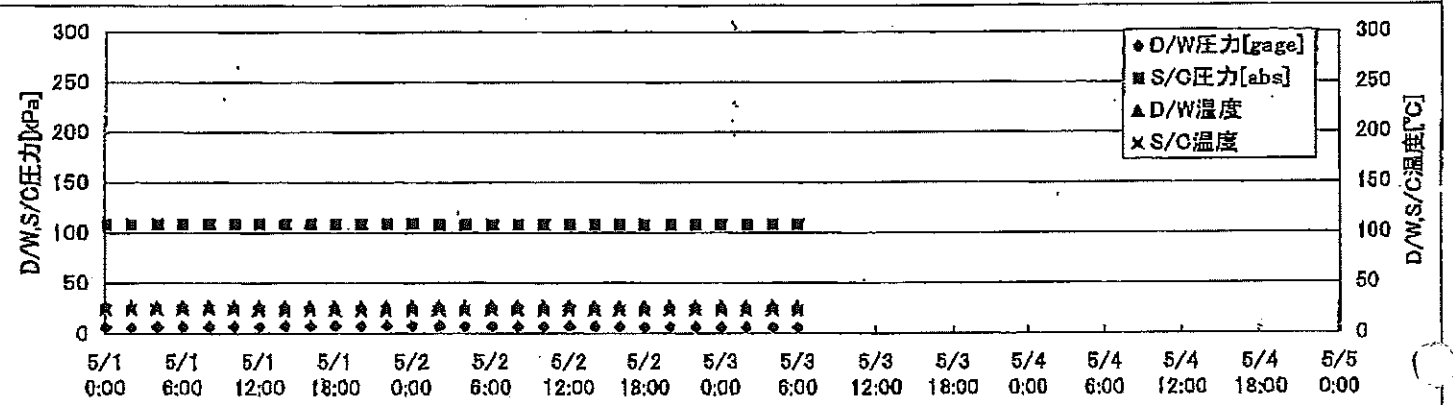
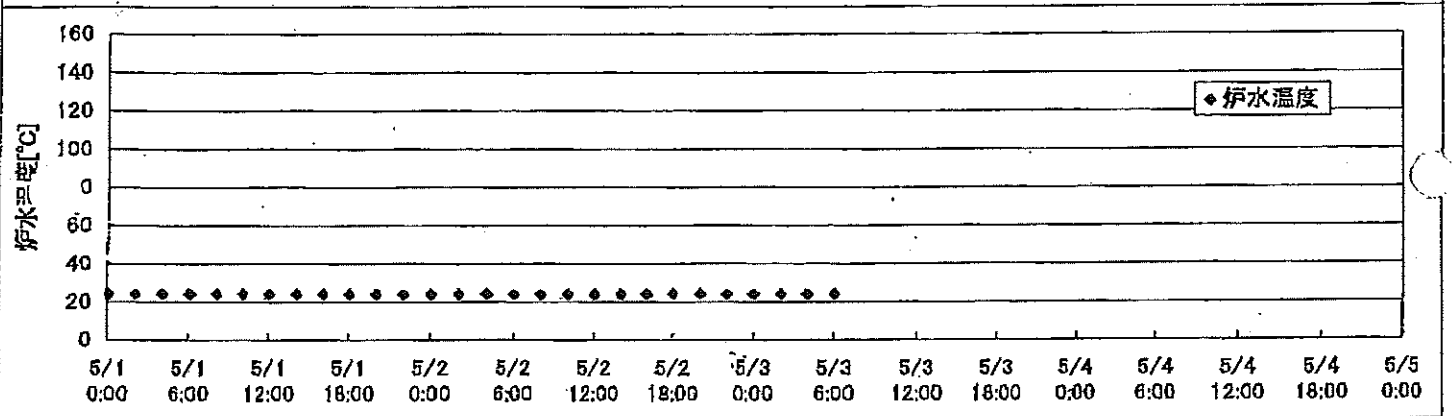
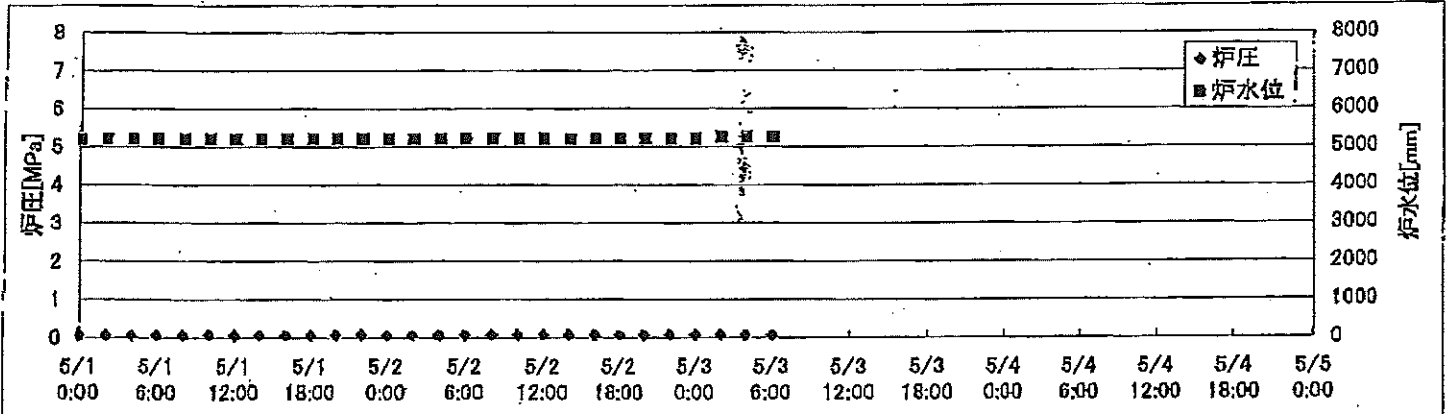
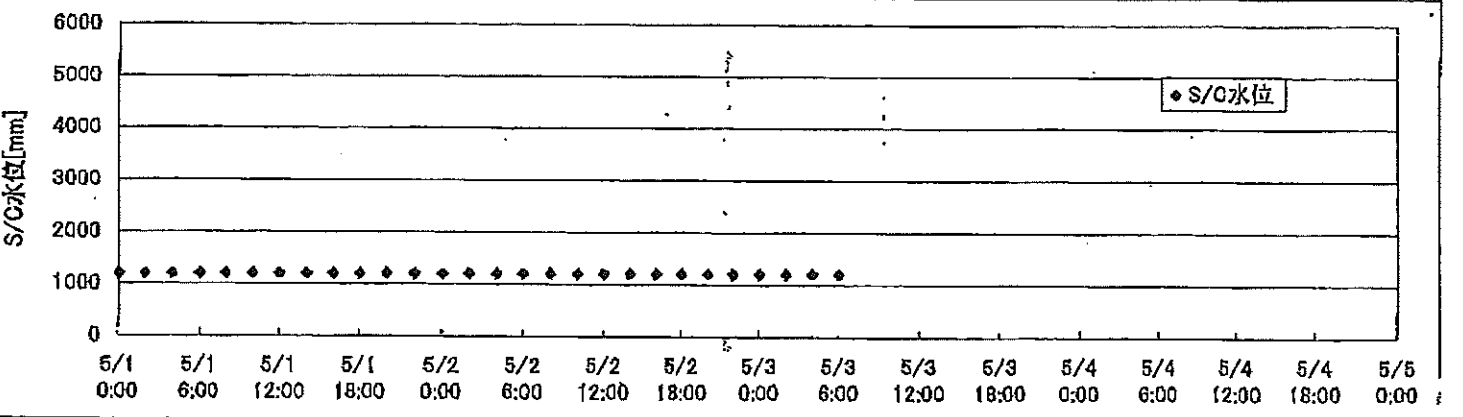
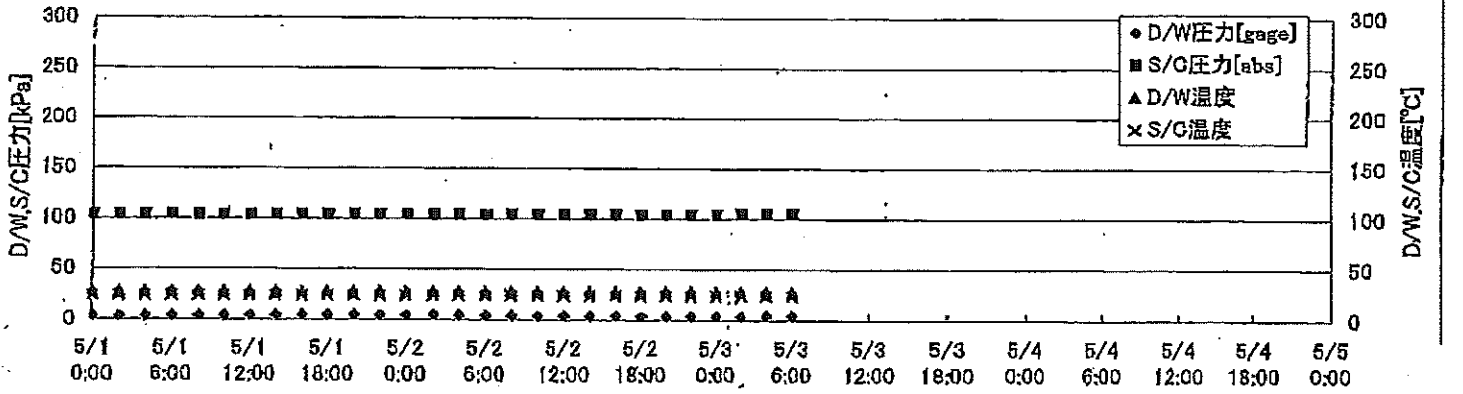
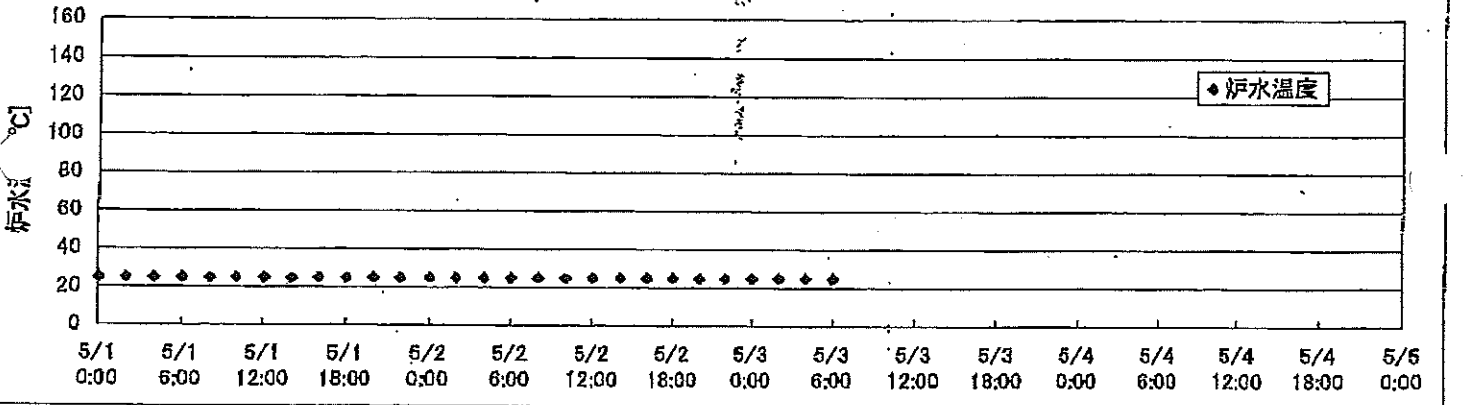
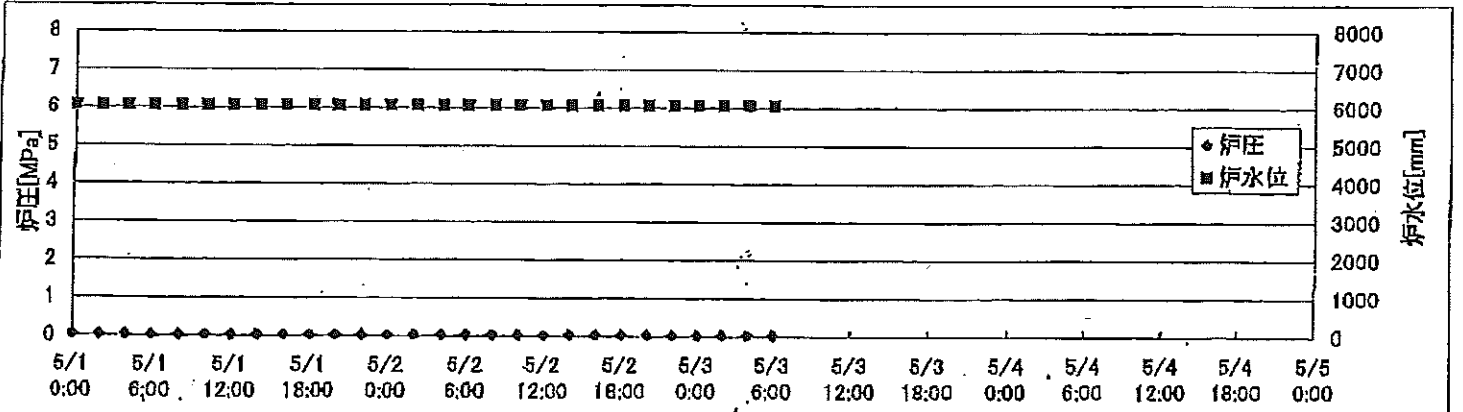


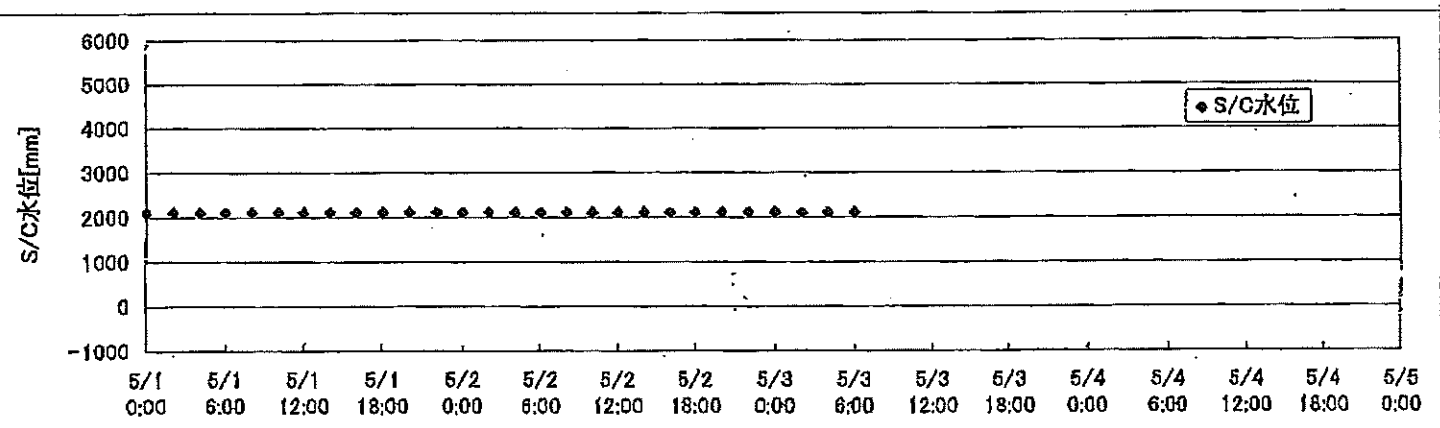
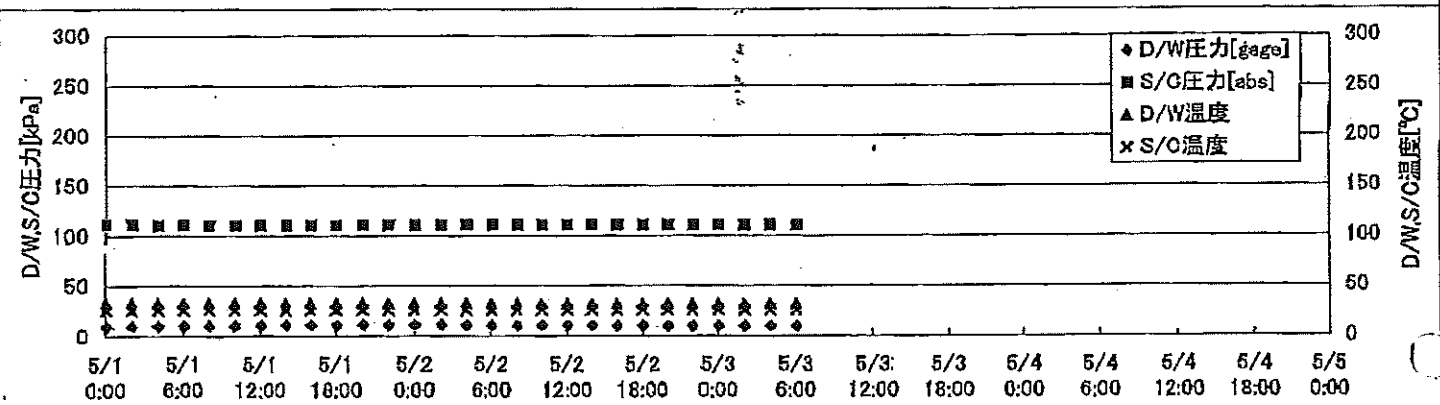
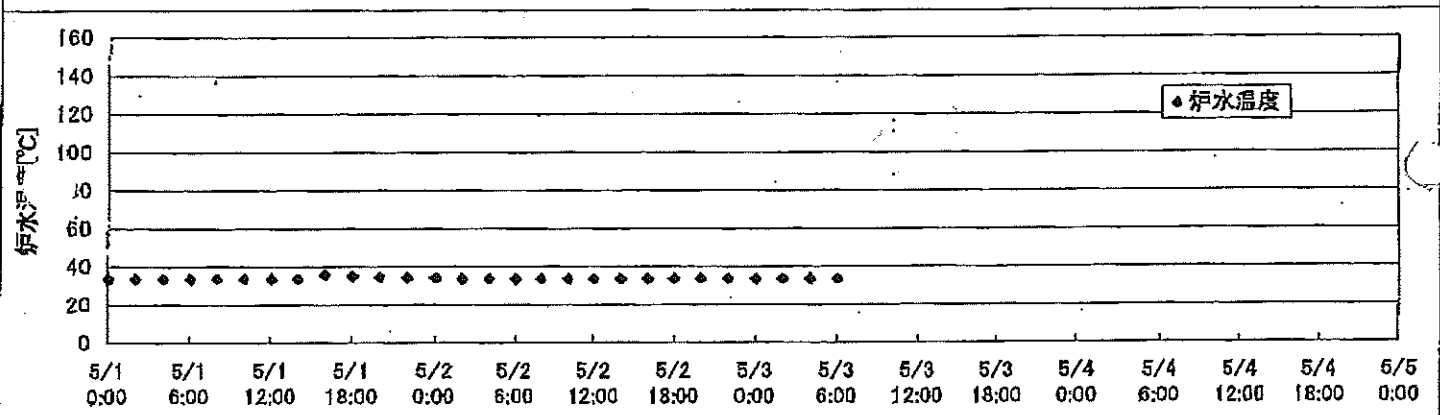
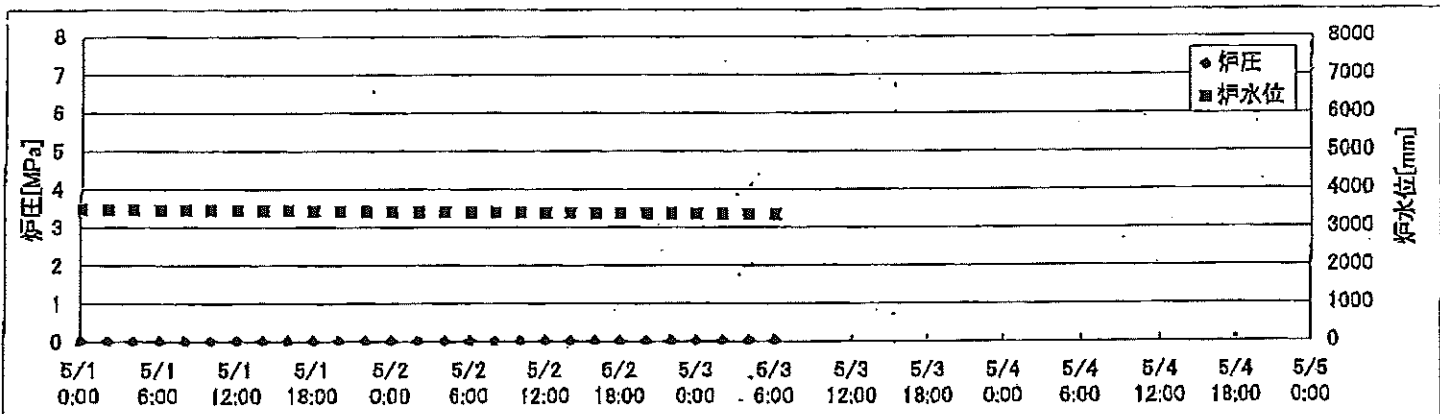
2F-1号機



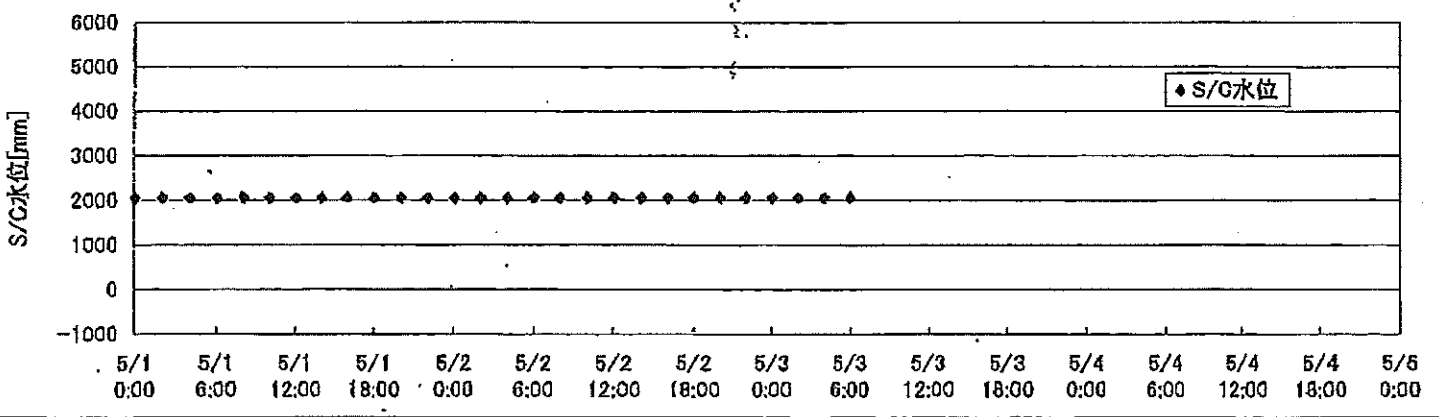
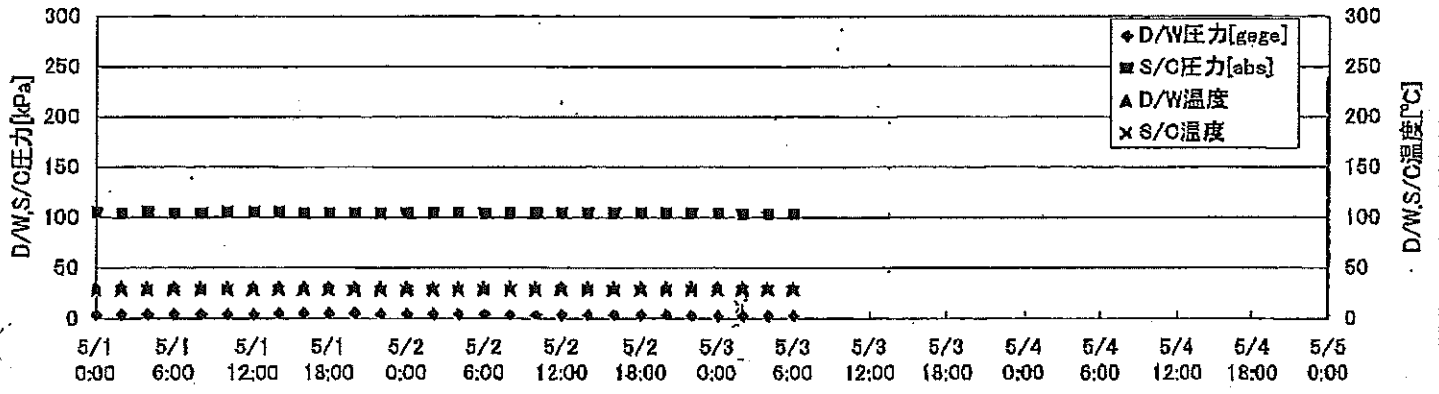
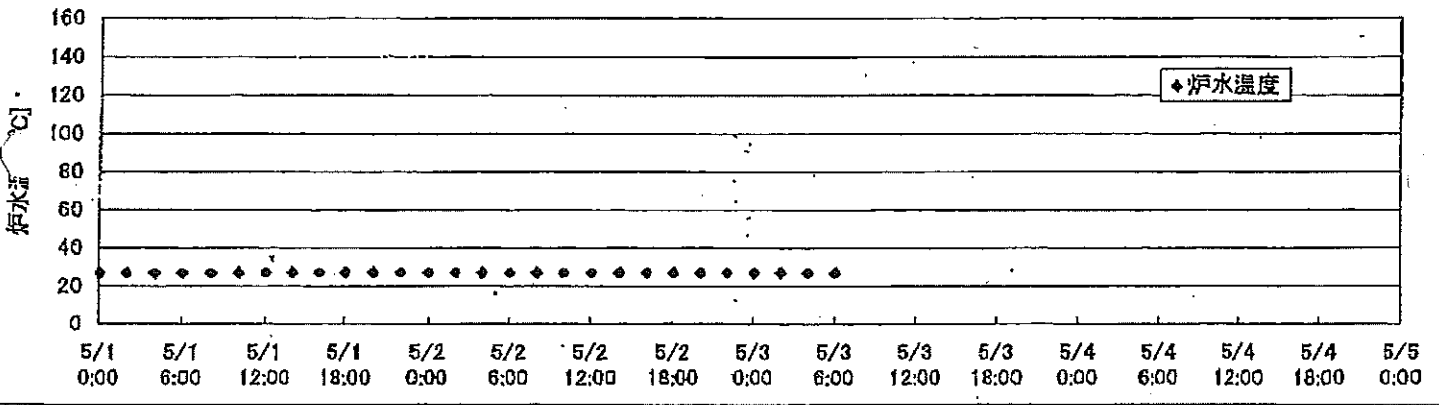
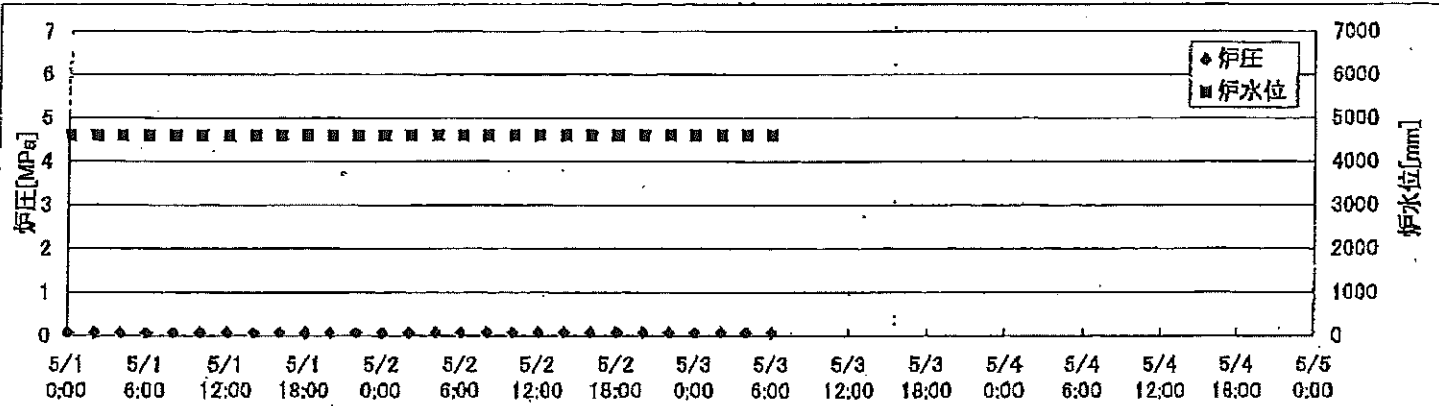
2F-2号機



2F-3号機



2F-4号機

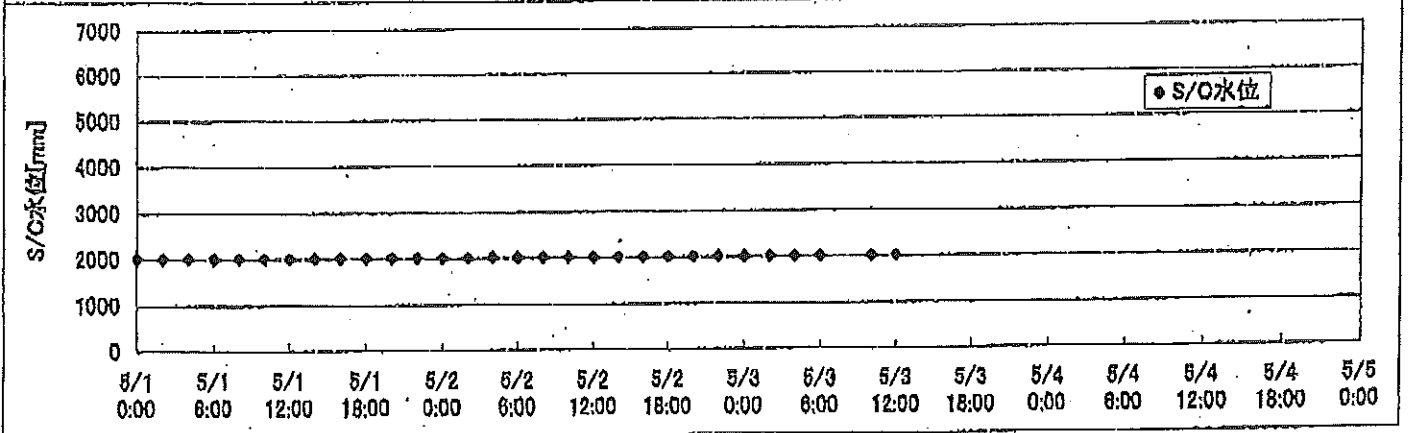
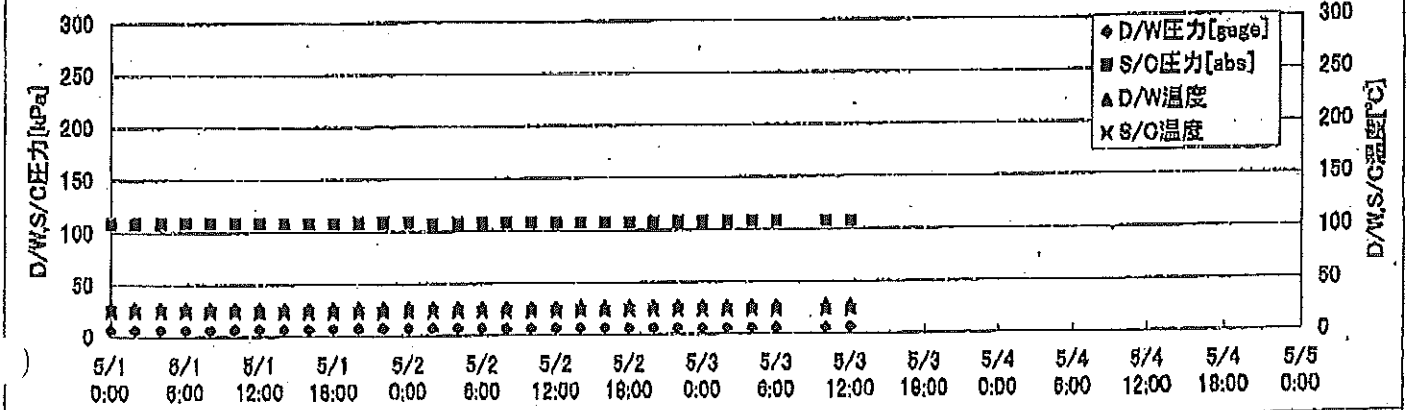
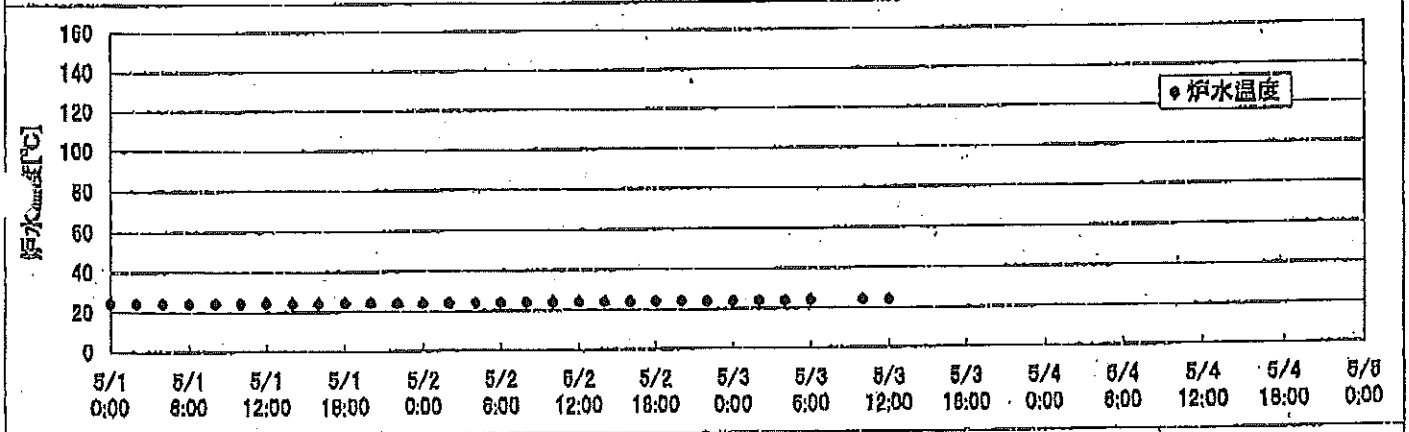
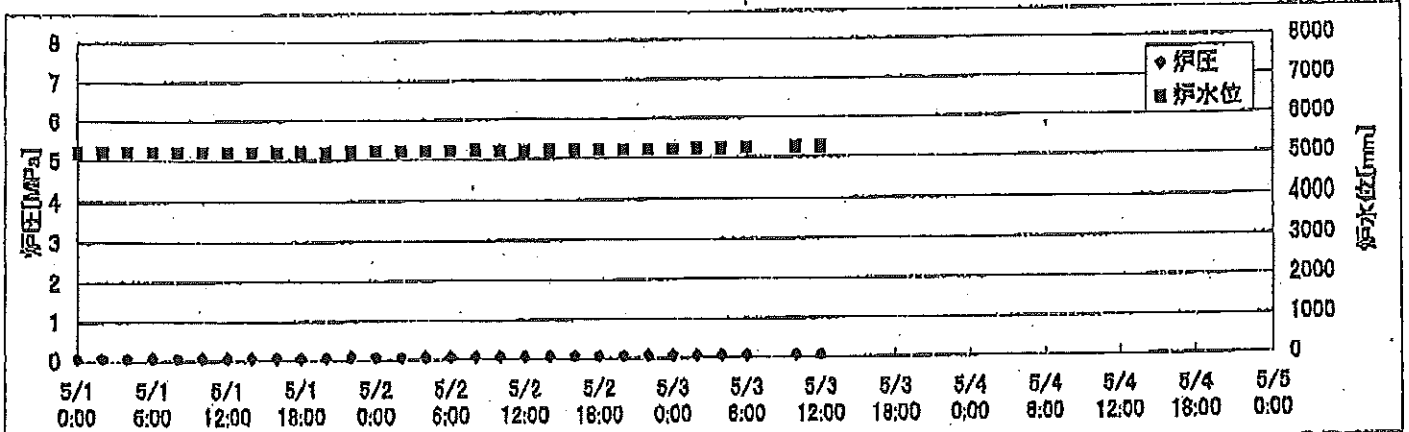


2F-3号 ※燃料頂部(TAF)からの水位=炉水位+4200[mm]

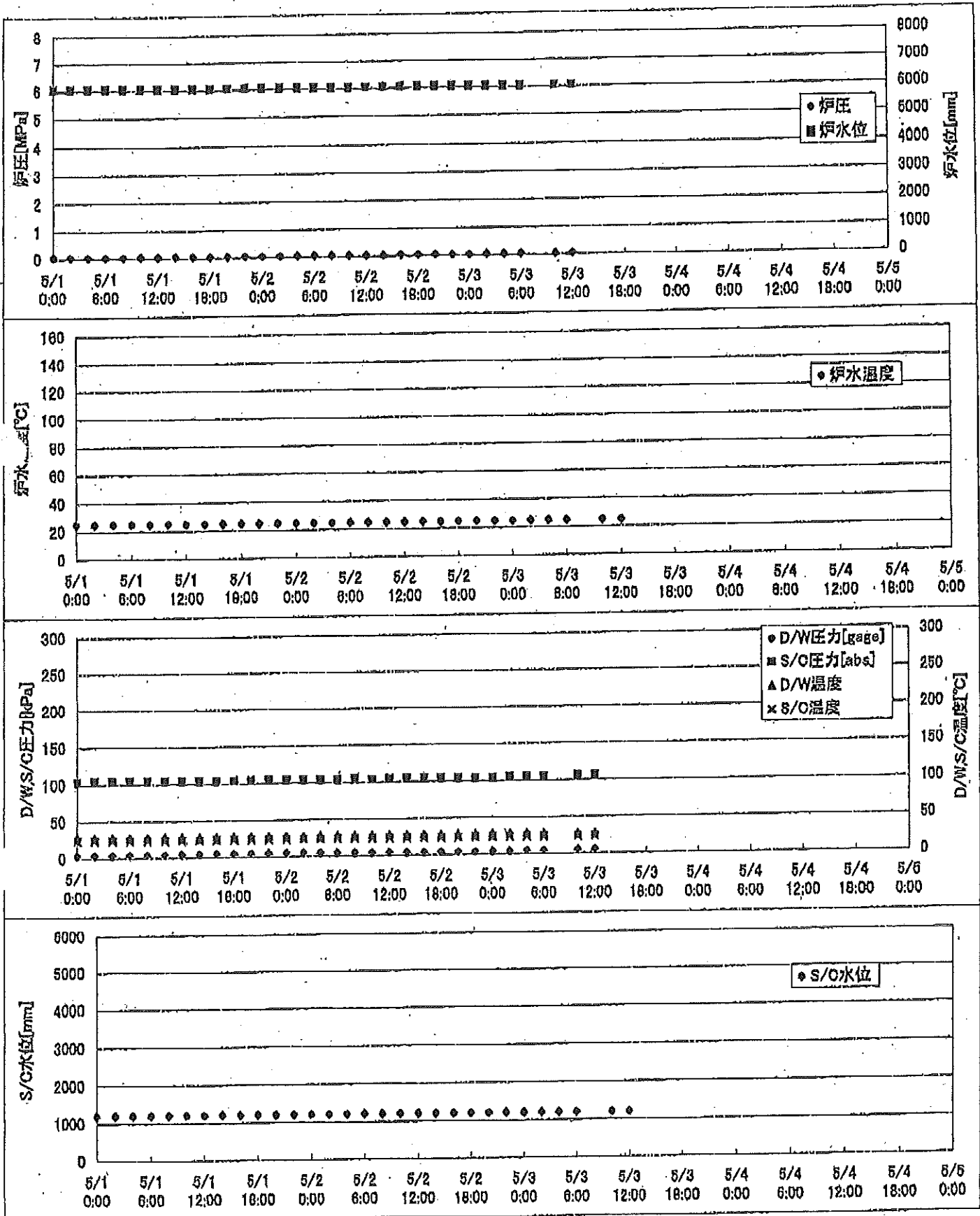
時間	炉圧 [MPa (gage)]	炉水位 [mm] アップセット	炉水温度[°C] 給水/スル温度	D/W圧力 [kPa(gage)]	D/W温度 [°C]	S/C圧力 [kPa(abs)]	S/C水位 [mm]	S/C温度 [°C]
2011/5/2 0:00	0.00	3389	34.0	11	32.6	110	2100	26
2011/5/2 2:00	0.00	3381	33.6	11	32.6	110	2100	26
2011/5/2 4:00	0.00	3376	33.4	10	32.6	110	2100	26
2011/5/2 6:00	0.00	3371	33.4	10	32.4	110	2100	26
2011/5/2 8:00	0.00	3367	33.4	10	32.2	110	2100	26
2011/5/2 10:00	0.00	3361	33.4	10	32.3	110	2100	26
2011/5/2 12:00	0.00	3355	33.4	10	32.3	110	2100	26
2011/5/2 14:00	0.00	3350	33.3	10	32.1	110	2100	26
2011/5/2 16:00	0.00	3347	33.3	10	32.1	110	2100	26
2011/5/2 18:00	0.00	3344	33.3	10	32.1	110	2100	26
2011/5/2 20:00	0.00	3334	33.3	10	32.1	110	2100	26
2011/5/2 22:00	0.00	3333	33.3	10	32.1	110	2100	26
2011/5/3 0:00	0.00	3333	33.3	10	32.1	110	2100	26
2011/5/3 2:00	0.00	3324	33.3	9	32.1	110	2100	26
2011/5/3 4:00	0.00	3320	33.3	9	32.1	110	2100	26
2011/5/3 6:00	0.00	3315	33.3	9	32.1	110	2100	26
2011/5/3 8:00								
2011/5/3 10:00								
2011/5/3 12:00								
2011/5/3 14:00								
2011/5/3 16:00								
2011/5/3 18:00								
2011/5/3 20:00								
2011/5/3 22:00								
2011/5/4 0:00								
2011/5/4 2:00								
2011/5/4 4:00								
2011/5/4 6:00								
2011/5/4 8:00								
2011/5/4 10:00								
2011/5/4 12:00								
2011/5/4 14:00								
2011/5/4 16:00								
2011/5/4 18:00								
2011/5/4 20:00								
2011/5/4 22:00								

5/1 15:51PLR吸込・吐出弁閉(炉水位低下調査中)

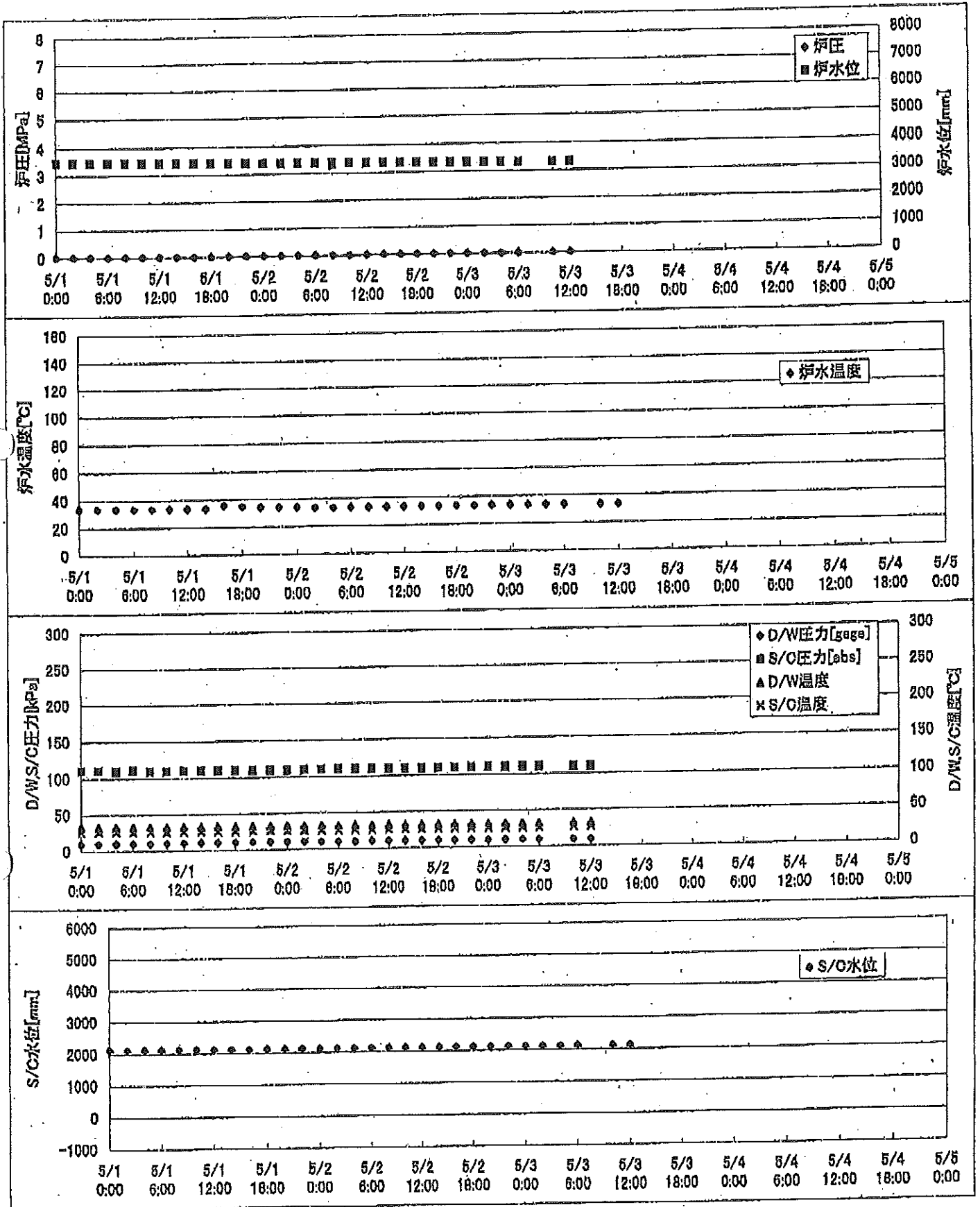
2F-1号機



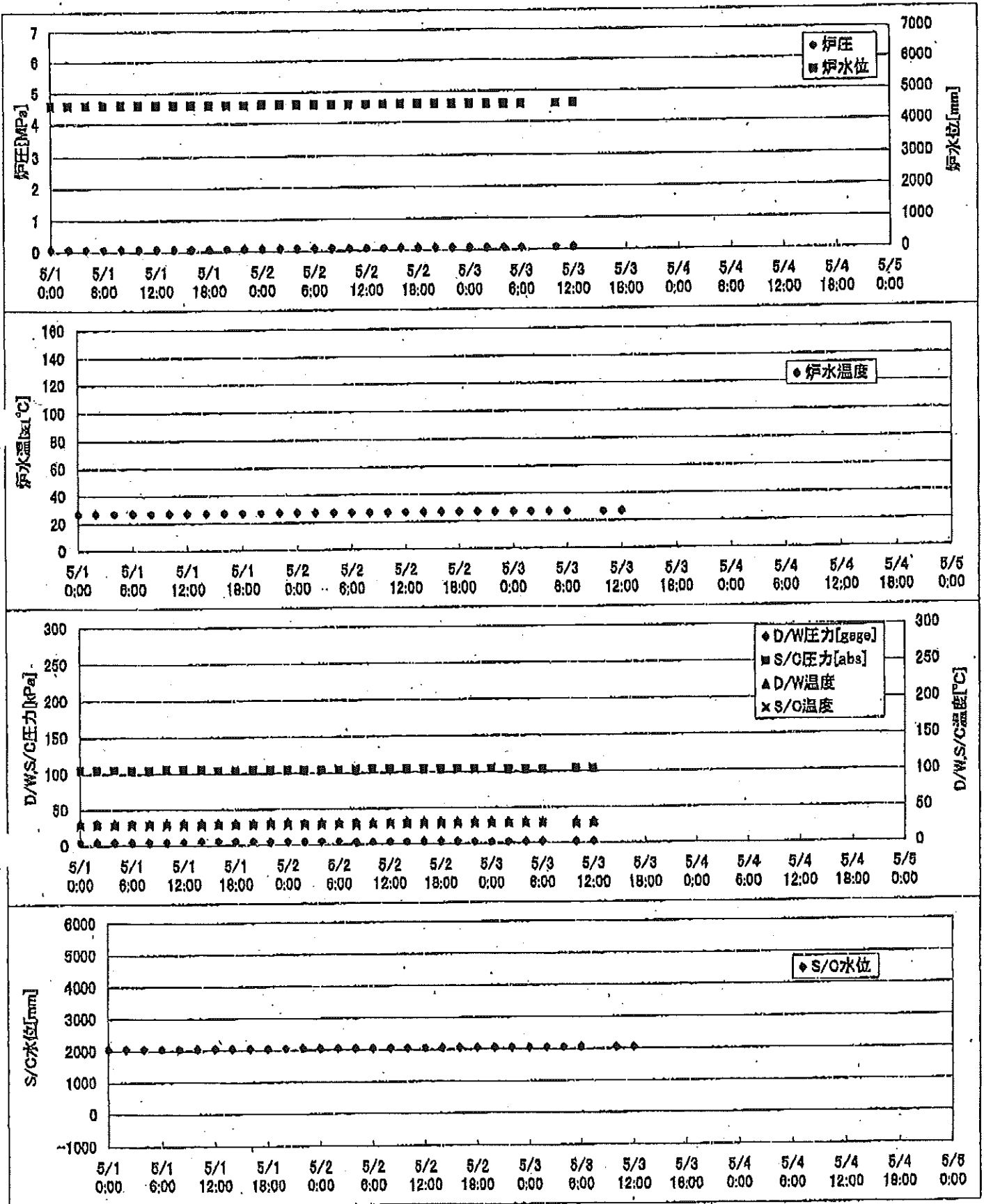
2F-2号機



2F-3号機



2F-4号機



2F-3号機

※燃料頂部(TAF)からの水位=炉水位+4200[mm]

時間	炉圧 [MPa (gage)]	炉水位 [mm] アツプセット	炉水温度[°C] 給水/スル温度	D/W圧力 [kPa(gage)]	D/W温度 [°C]	S/C圧力 [kPa(abs)]	S/C水位 [mm]	S/C温度 [°C]
2011/5/2 0:00	0.00	3389	34.0	11	32.6	110	2100	26
2011/5/2 2:00	0.00	3381	33.6	11	32.6	110	2100	26
2011/5/2 4:00	0.00	3376	33.4	10	32.6	110	2100	26
2011/5/2 6:00	0.00	3371	33.4	10	32.4	110	2100	26
2011/5/2 8:00	0.00	3367	33.4	10	32.2	110	2100	26
2011/5/2 10:00	0.00	3361	33.4	10	32.3	110	2100	26
2011/5/2 12:00	0.00	3355	33.4	10	32.3	110	2100	26
2011/5/2 14:00	0.00	3350	33.3	10	32.1	110	2100	26
2011/5/2 16:00	0.00	3347	33.3	10	32.1	110	2100	26
2011/5/2 18:00	0.00	3344	33.3	10	32.1	110	2100	26
2011/5/2 20:00	0.00	3334	33.3	10	32.1	110	2100	26
2011/5/2 22:00	0.00	3333	33.3	10	32.1	110	2100	26
2011/5/3 0:00	0.00	3333	33.3	10	32.1	110	2100	26
2011/5/3 2:00	0.00	3324	33.3	9	32.1	110	2100	26
2011/5/3 4:00	0.00	3320	33.3	9	32.1	110	2100	26
2011/5/3 6:00	0.00	3315	33.3	9	32.1	110	2100	26
2011/5/3 8:00	0.00	3310	33.2	9	32.1	110	2100	26
2011/5/3 10:00	0.00	3303	33.2	9	32.0	110	2100	26
2011/5/3 12:00	0.00	3303	33.2	9	32.0	110	2100	26
2011/5/3 14:00								
2011/5/3 16:00								
2011/5/3 18:00								
2011/5/3 20:00								
2011/5/3 22:00								
2011/5/4 0:00								
2011/5/4 2:00								
2011/5/4 4:00								
2011/5/4 6:00								
2011/5/4 8:00								
2011/5/4 10:00								
2011/5/4 12:00								
2011/5/4 14:00								
2011/5/4 16:00								
2011/5/4 18:00								
2011/5/4 20:00								
2011/5/4 22:00								

5/3 15:51PLR吸入・吐出弁閉 (炉水位低下調査中)

