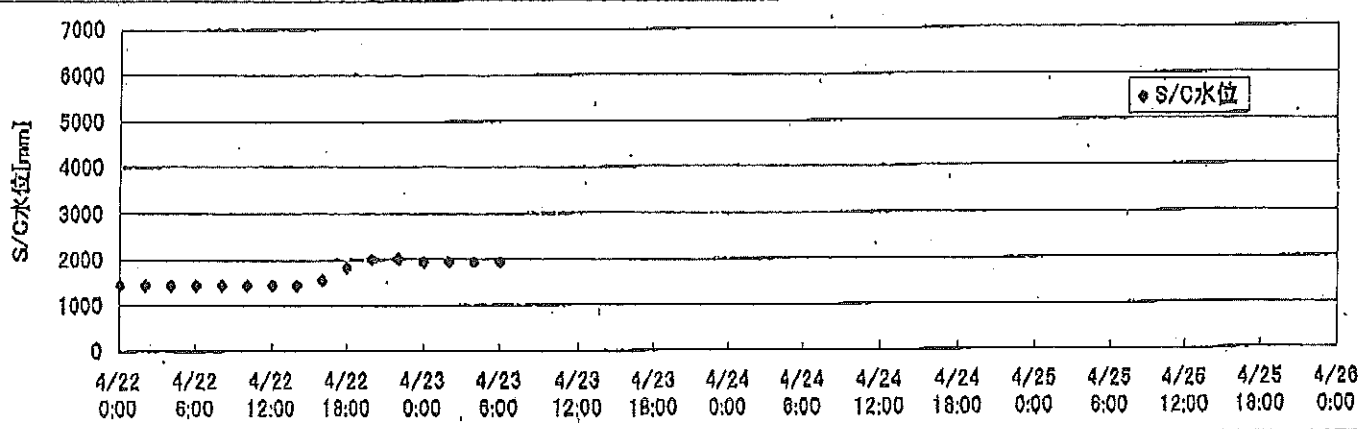
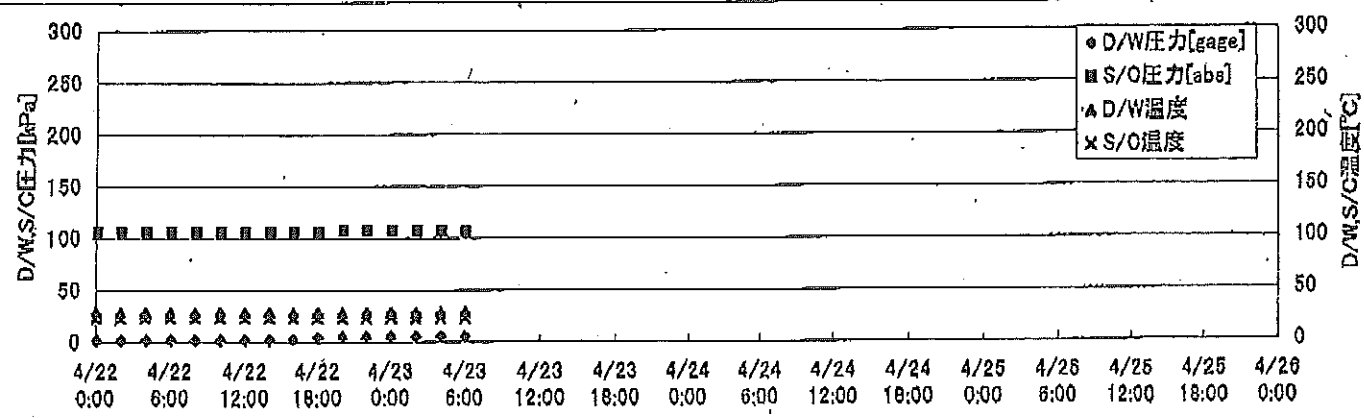
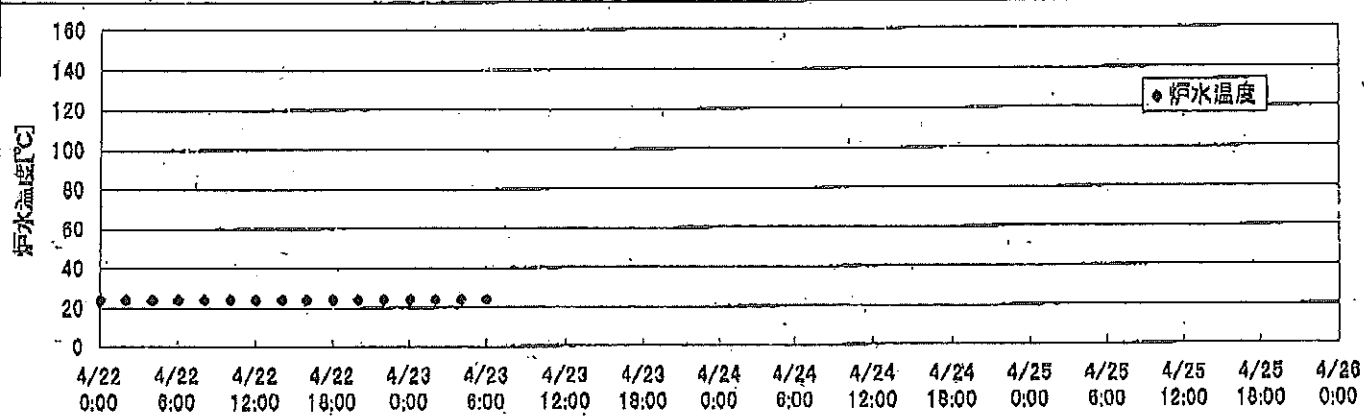
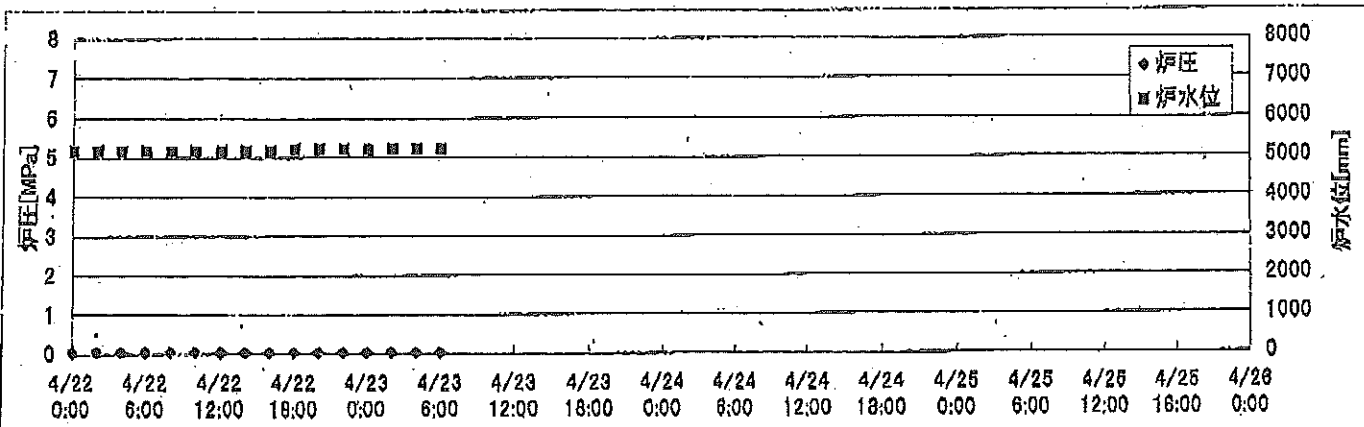
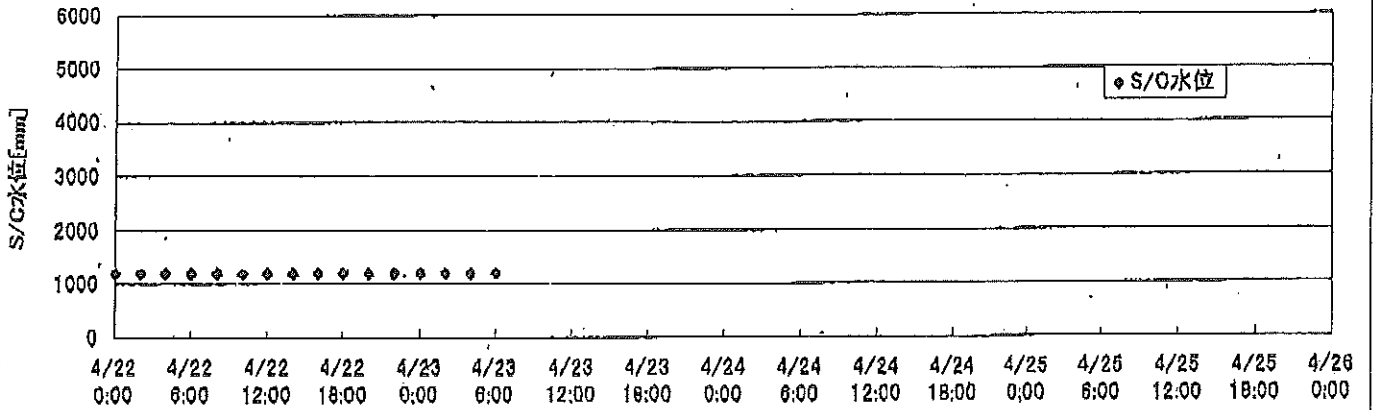
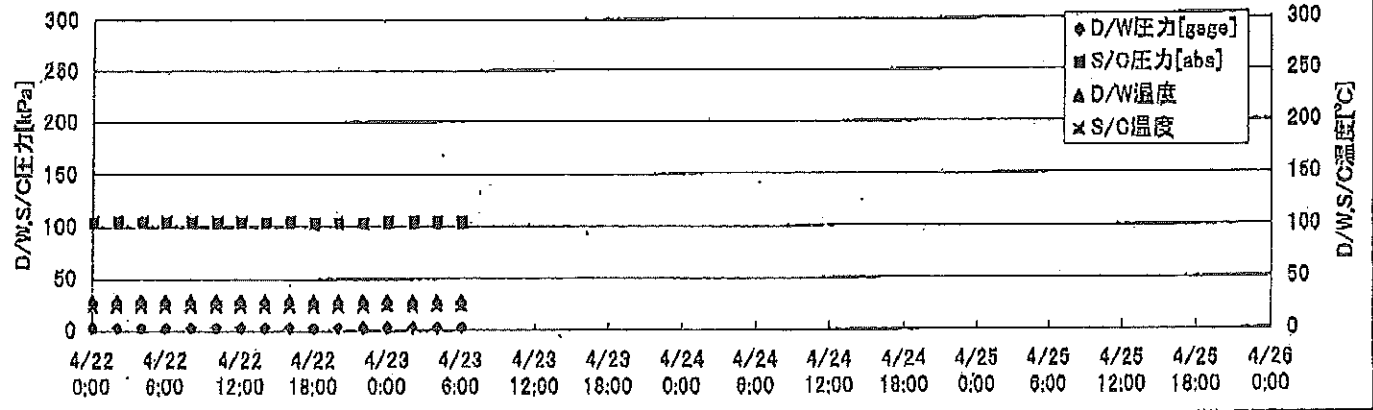
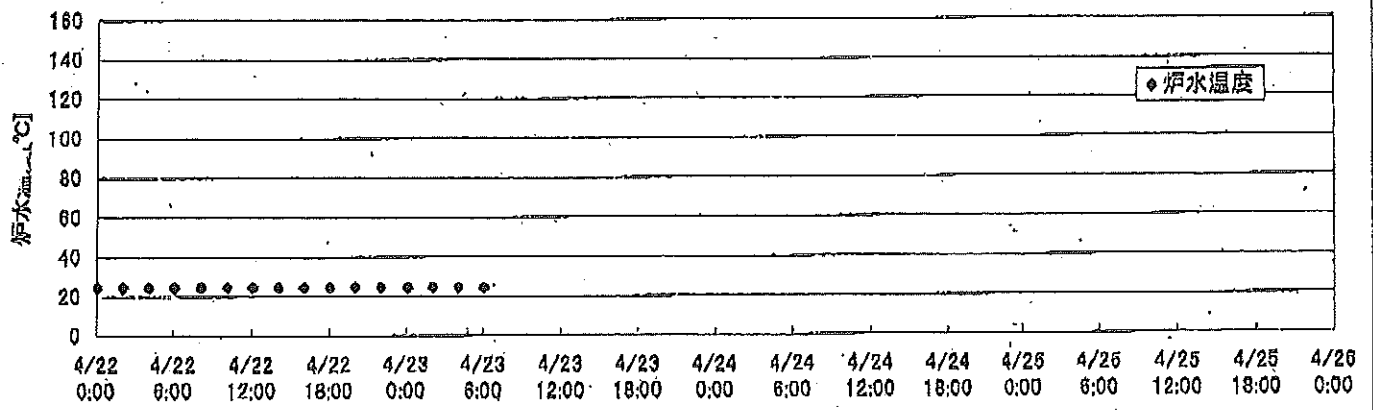
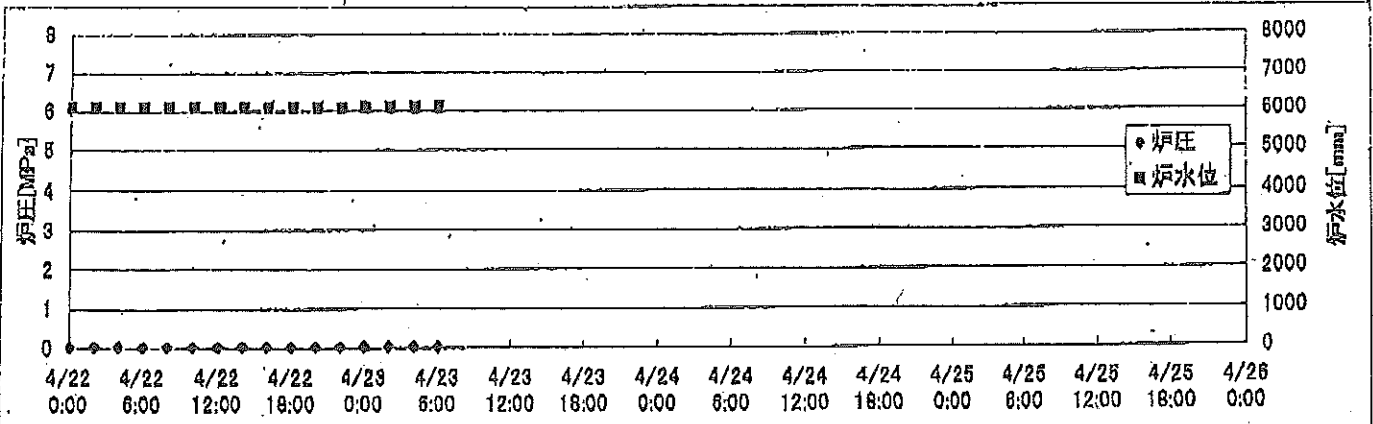


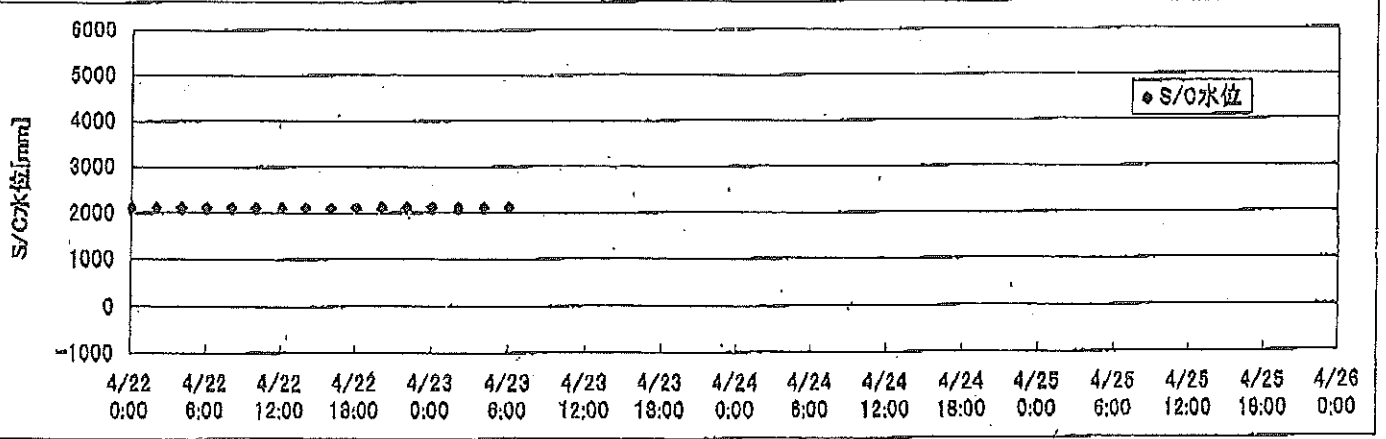
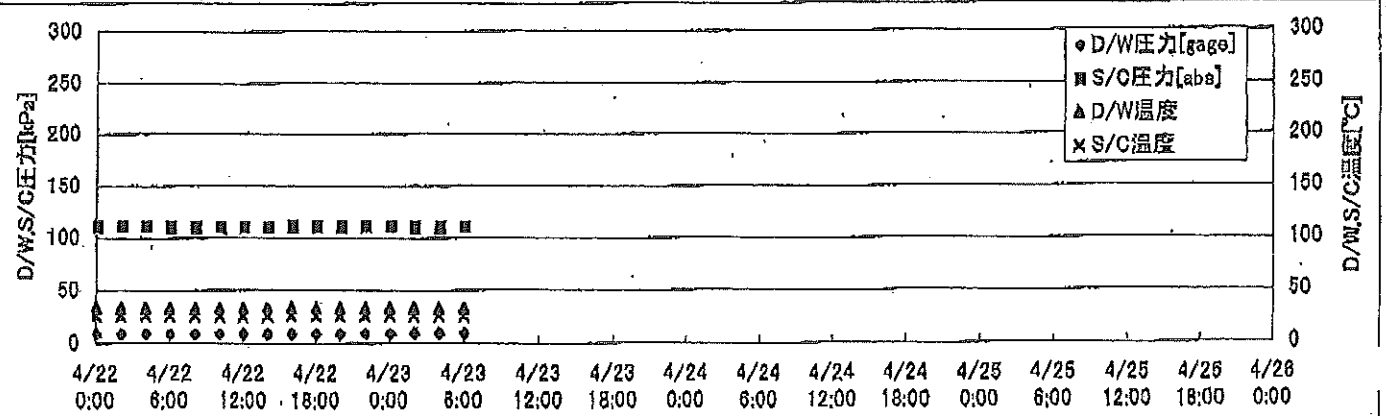
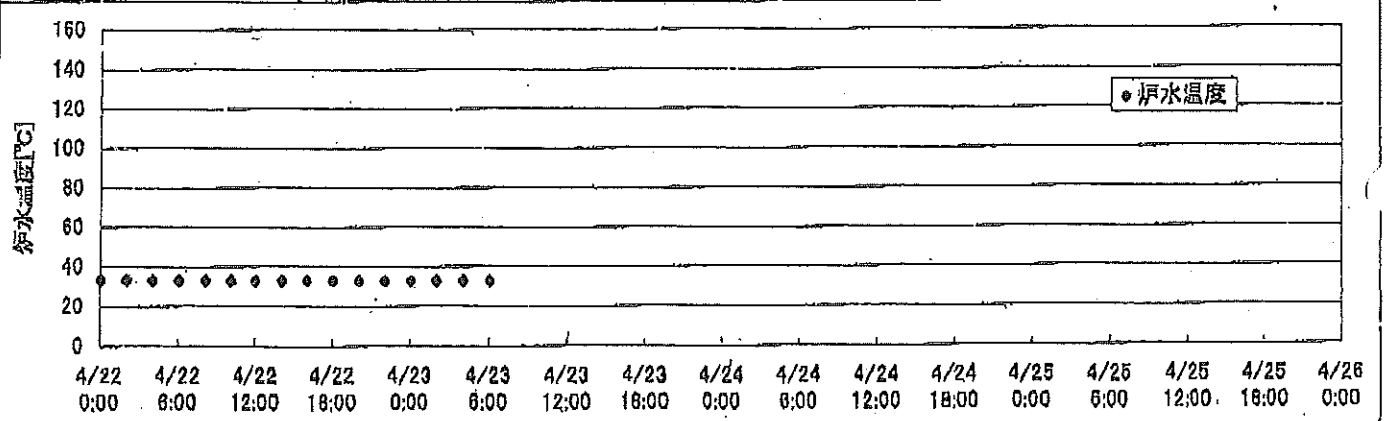
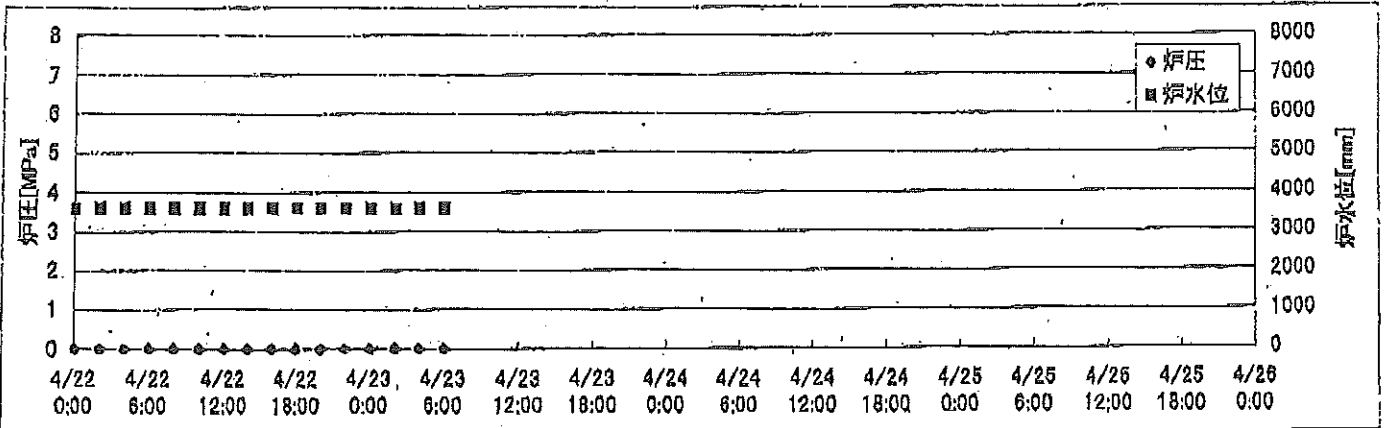
2F-1号機



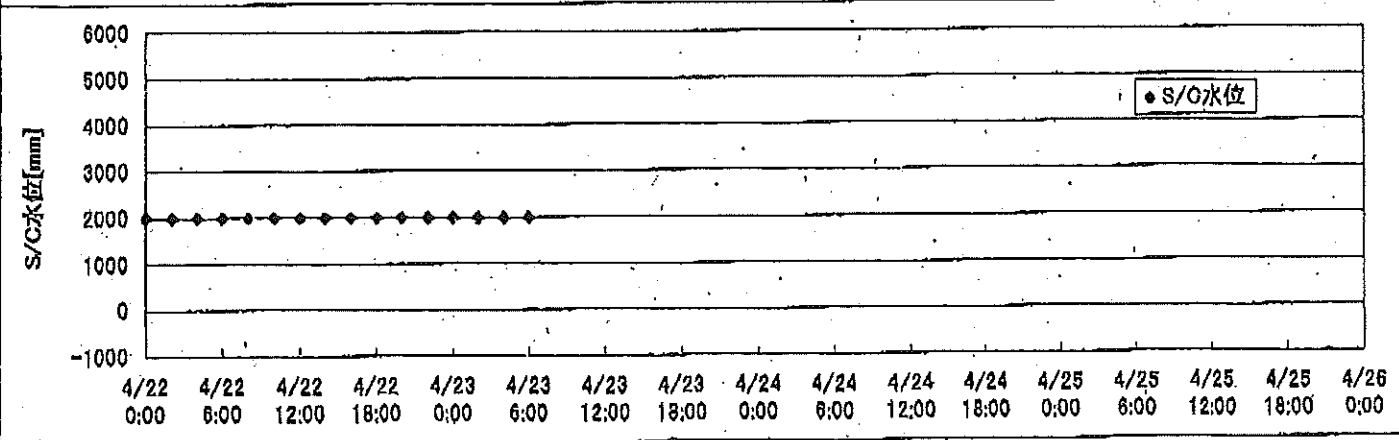
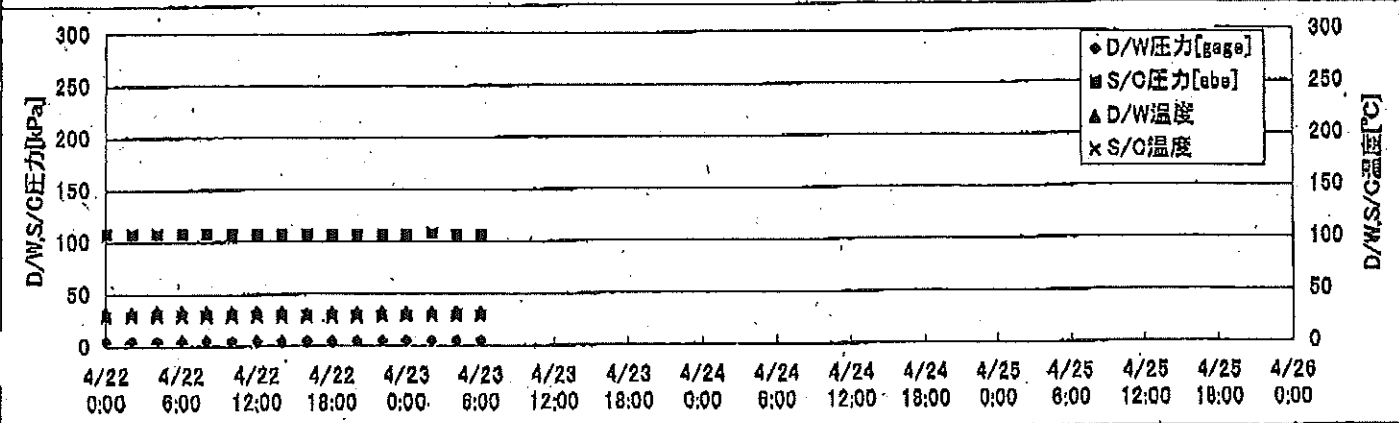
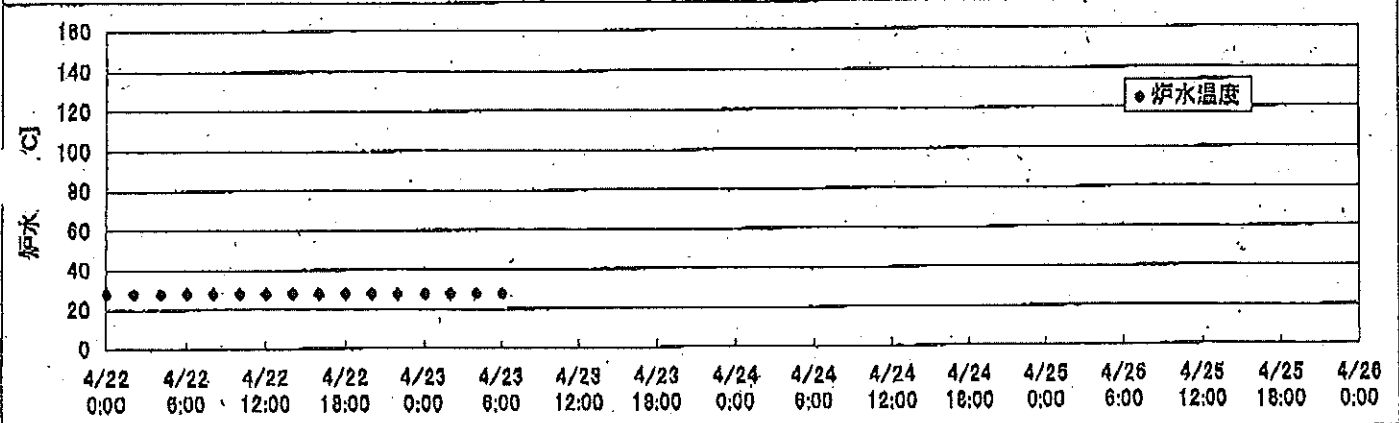
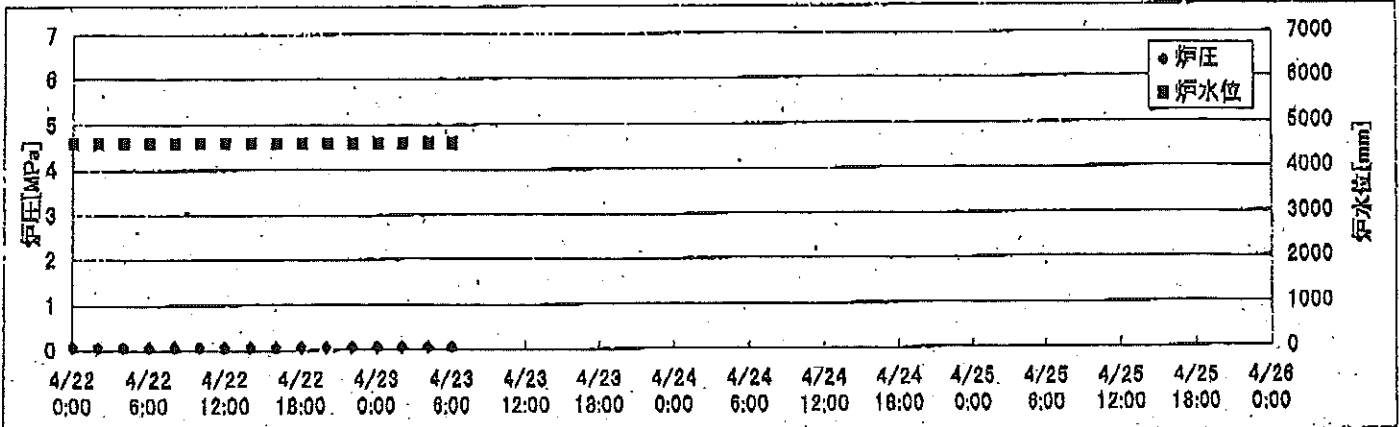
2F-2号機



2F-3号機



2F-4号機



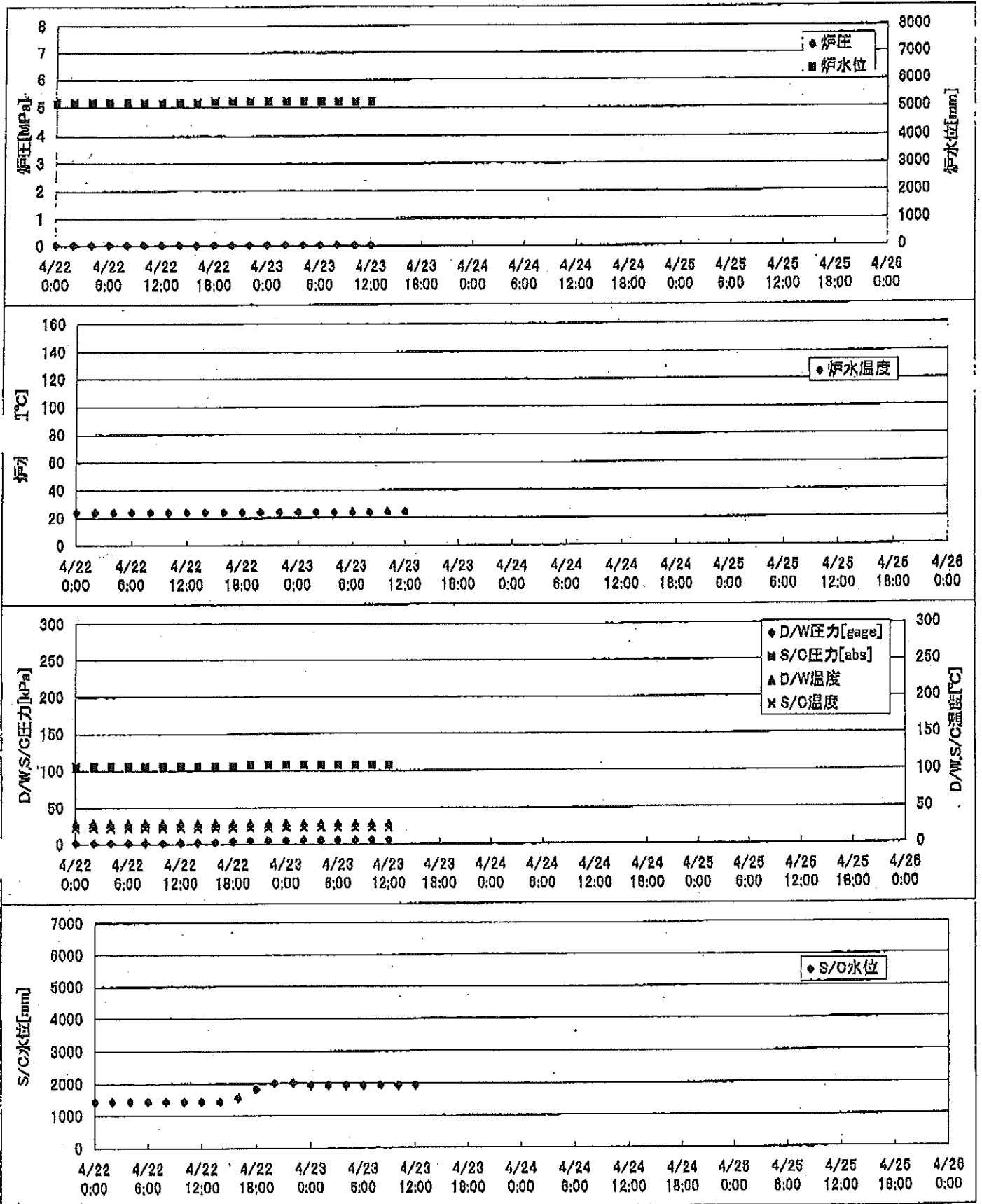
2F-1号機

※燃料頂部(TAF)からの水位=炉水位+4200[mm]

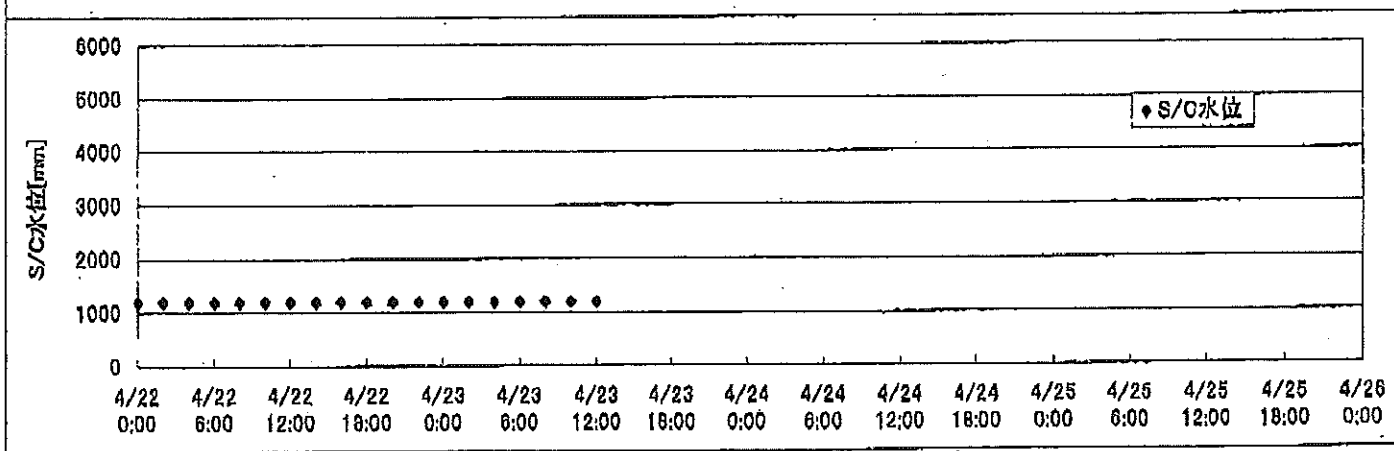
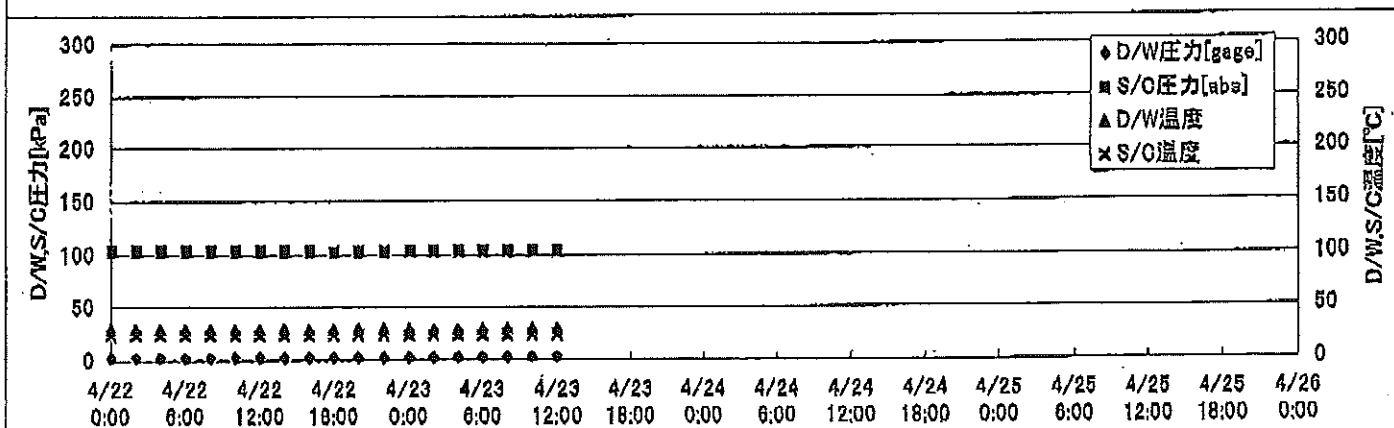
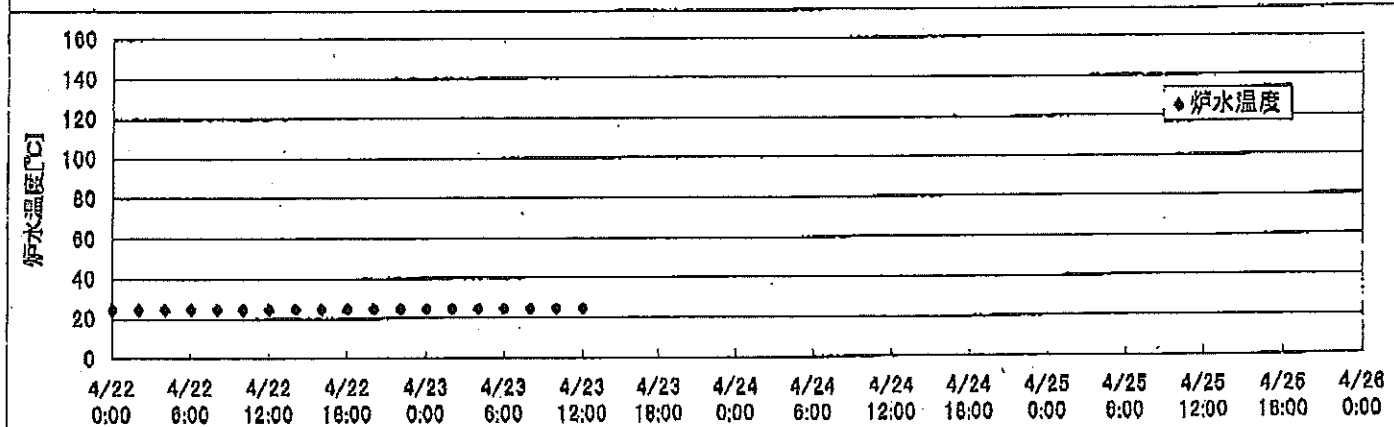
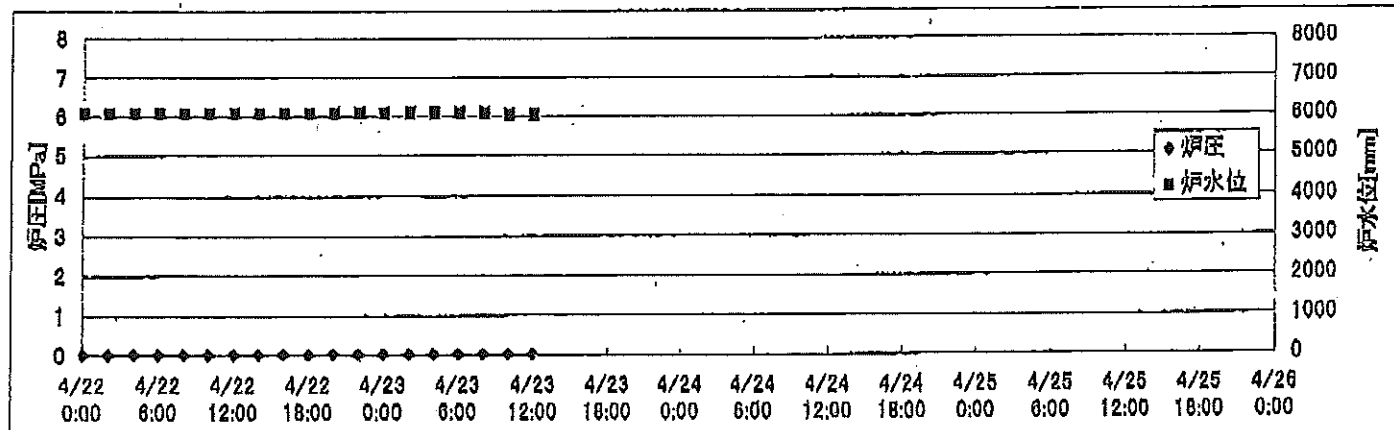
| 時間 | 炉圧 [MPa (gage)] | 炉水位 [mm] 停止時 | 炉水温度[°C] 給水/スル温度 | D/W圧力 [kPa(gage)] | D/W温度 [°C] | S/C圧力 [kPa(abs)] | S/C水位 [mm] | S/C温度 [°C] |
|-----------------------|-----------------------|--------------------|---------------------|----------------------|---------------|---------------------|---------------|---------------|
| 2011/4/22 0:00 | 0.05 | 5150 | 24.2 | 2 | 28.4 | 105 | 1436 | 23 |
| 2011/4/22 2:00 | 0.05 | 5150 | 24.2 | 2 | 28.4 | 105 | 1436 | 23 |
| 2011/4/22 4:00 | 0.05 | 5150 | 24.2 | 2 | 28.4 | 105 | 1436 | 23 |
| 2011/4/22 6:00 | 0.05 | 5150 | 24.2 | 2 | 28.4 | 105 | 1436 | 23 |
| 2011/4/22 8:00 | 0.05 | 5150 | 24.1 | 2 | 28.4 | 105 | 1436 | 23 |
| 2011/4/22 10:00 | 0.05 | 5150 | 24.2 | 2 | 28.4 | 105 | 1436 | 23 |
| 2011/4/22 12:00 | 0.05 | 5150 | 24.2 | 2 | 28.4 | 105 | 1436 | 23 |
| 2011/4/22 14:00 | 0.05 | 5150 | 24.2 | 2 | 28.4 | 105 | 1436 | 23 |
| 2011/4/22 16:00 | 0.05 | 5150 | 24.2 | 3 | 28.4 | 105 | 1551 | 23 |
| 2011/4/22 18:00 | 0.05 | 5200 | 24.2 | 4 | 28.4 | 106 | 1822 | 23 |
| 2011/4/22 20:00 | 0.05 | 5200 | 24.2 | 5 | 28.3 | 107 | 2011 | 23 |
| 2011/4/22 22:00 | 0.05 | 5200 | 24.2 | 5 | 28.3 | 107 | 2010 | 23 |
| 2011/4/23 0:00 | 0.05 | 5200 | 24.2 | 5 | 28.2 | 107 | 1943 | 23 |
| 2011/4/23 2:00 | 0.05 | 5200 | 24.2 | 5 | 28.2 | 107 | 1943 | 23 |
| 2011/4/23 4:00 | 0.05 | 5200 | 24.2 | 5 | 28.2 | 107 | 1942 | 23 |
| 2011/4/23 6:00 | 0.05 | 5200 | 24.1 | 5 | 28.2 | 107 | 1941 | 23 |
| 2011/4/23 8:00 | | | | | | | | |
| 2011/4/23 10:00 | | | | | | | | |
| 2011/4/23 12:00 | | | | | | | | |
| 2011/4/23 14:00 | | | | | | | | |
| 2011/4/23 16:00 | | | | | | | | |
| 2011/4/23 18:00 | | | | | | | | |
| 2011/4/23 20:00 | | | | | | | | |
| 2011/4/23 22:00 | | | | | | | | |
| 2011/4/24 0:00 | | | | | | | | |
| 2011/4/24 2:00 | | | | | | | | |
| 2011/4/24 4:00 | | | | | | | | |
| 2011/4/24 6:00 | | | | | | | | |
| 2011/4/24 8:00 | | | | | | | | |
| 2011/4/24 10:00 | | | | | | | | |
| 2011/4/24 12:00 | | | | | | | | |
| 2011/4/24 14:00 | | | | | | | | |
| 2011/4/24 16:00 | | | | | | | | |
| 2011/4/24 18:00 | | | | | | | | |
| 2011/4/24 20:00 | | | | | | | | |
| 2011/4/24 22:00 | | | | | | | | |
| 2011/4/25 0:00 | | | | | | | | |

S/C水張り実施(4/22 14:41開始、4/22 19:52終了)

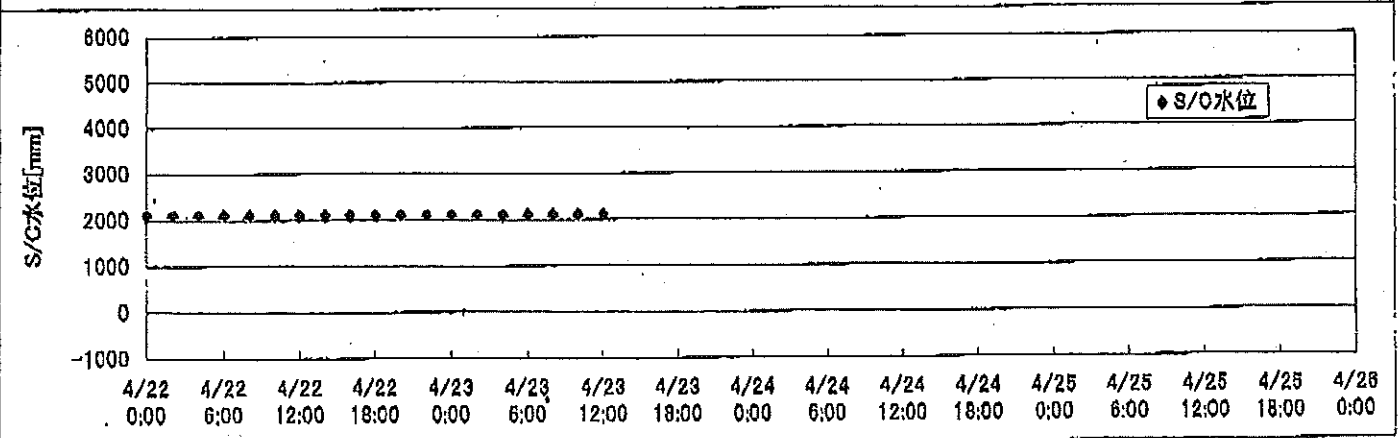
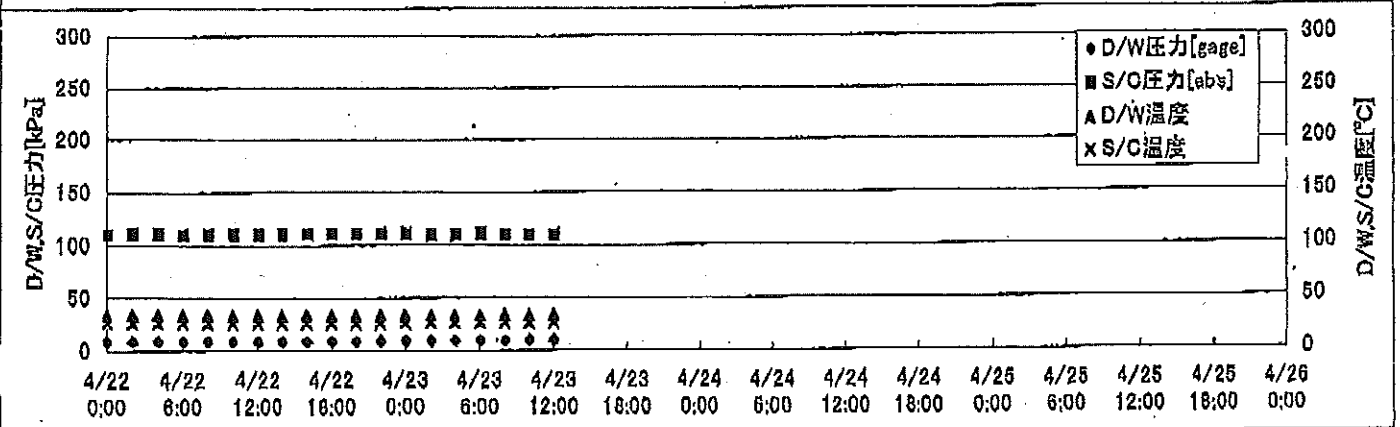
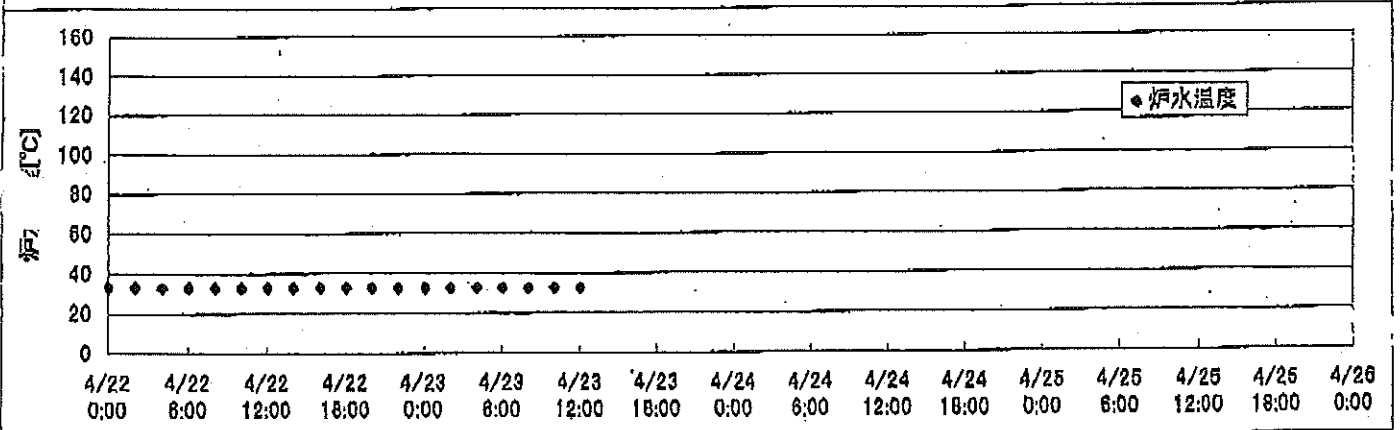
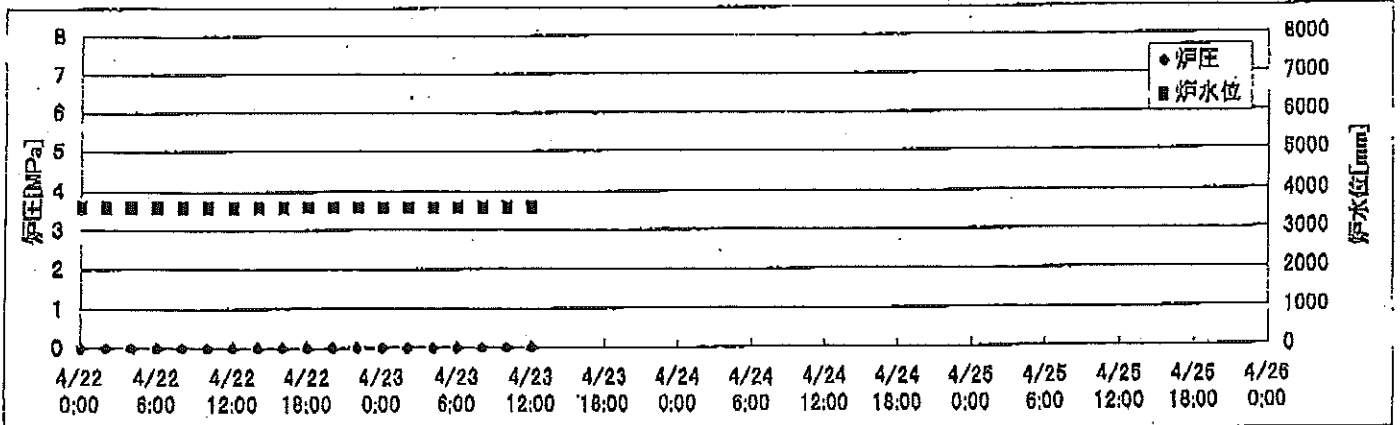
2F-1号機



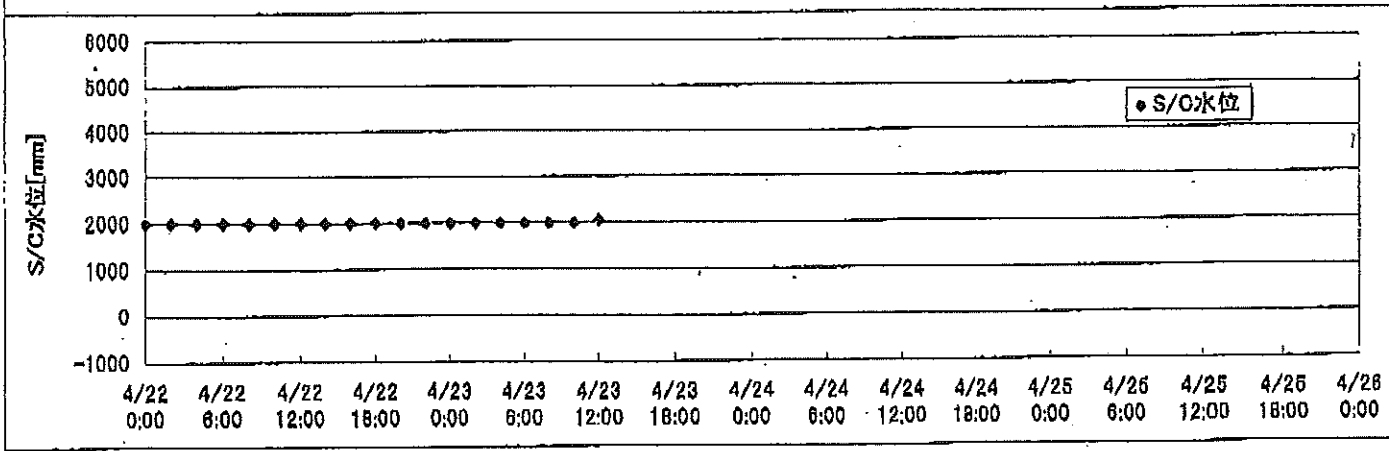
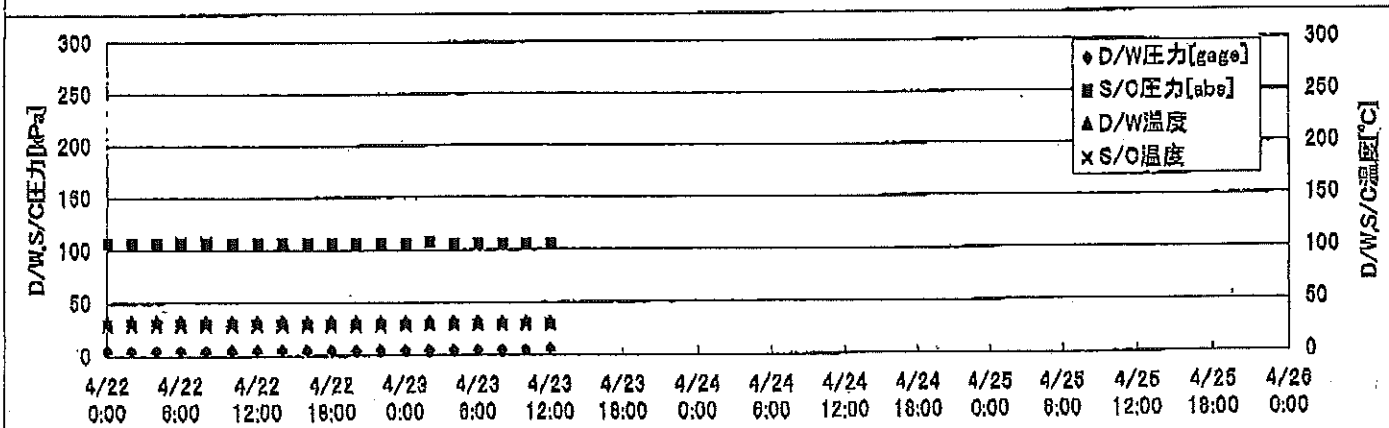
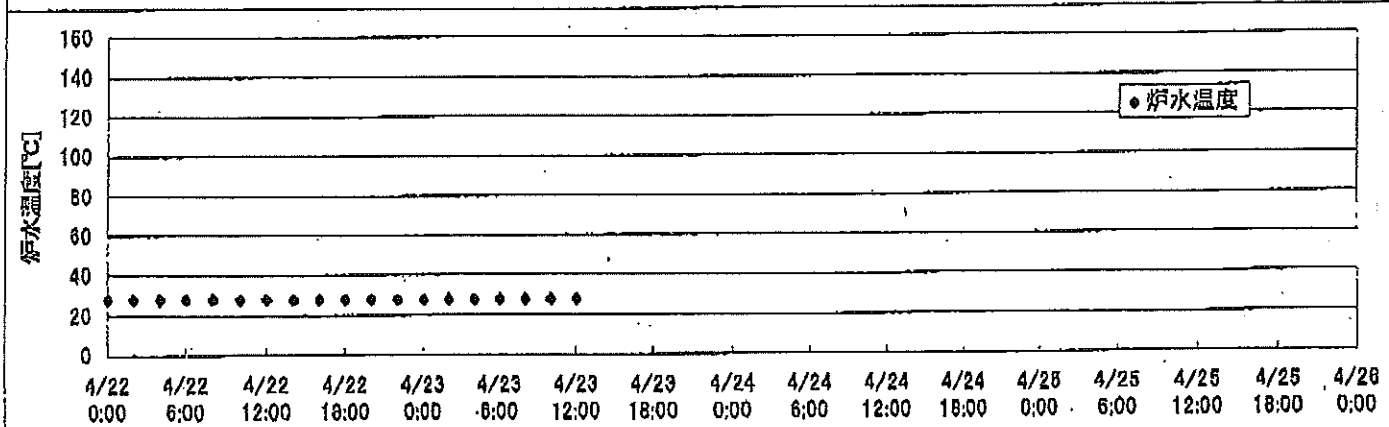
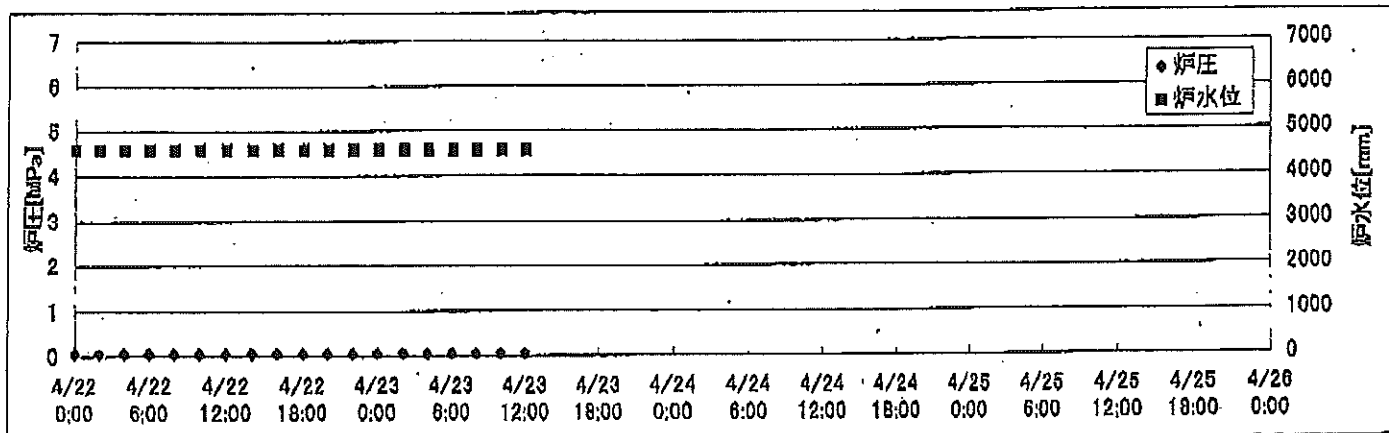
2F-2号機



2F-3号機



2F-4号機



2F-1号機

※燃料頂部(TAF)からの水位=炉水位+4200[mm]

| 時間 | 炉圧 [MPa (gage)] | 炉水位 [mm] 停止時 | 炉水温度[°C] 給水/スル温度 | D/W圧力 [kPa(gage)] | D/W温度 [°C] | S/C圧力 [kPa(abs)] | S/C水位 [mm] | S/C温度 [°C] |
|------------------------|-----------------------|--------------------|---------------------|----------------------|---------------|---------------------|---------------|---------------|
| 2011/4/22 0:00 | 0.05 | 5150 | 24.2 | 2 | 28.4 | 105 | 1436 | 23 |
| 2011/4/22 2:00 | 0.05 | 5150 | 24.2 | 2 | 28.4 | 105 | 1436 | 23 |
| 2011/4/22 4:00 | 0.05 | 5150 | 24.2 | 2 | 28.4 | 105 | 1436 | 23 |
| 2011/4/22 6:00 | 0.05 | 5150 | 24.2 | 2 | 28.4 | 105 | 1436 | 23 |
| 2011/4/22 8:00 | 0.05 | 5150 | 24.1 | 2 | 28.4 | 105 | 1436 | 23 |
| 2011/4/22 10:00 | 0.05 | 5150 | 24.2 | 2 | 28.4 | 105 | 1436 | 23 |
| 2011/4/22 12:00 | 0.05 | 5150 | 24.2 | 2 | 28.4 | 105 | 1436 | 23 |
| 2011/4/22 14:00 | 0.05 | 5150 | 24.2 | 2 | 28.4 | 105 | 1436 | 23 |
| 2011/4/22 16:00 | 0.05 | 5150 | 24.2 | 3 | 28.4 | 105 | 1551 | 23 |
| 2011/4/22 18:00 | 0.05 | 5200 | 24.2 | 4 | 28.4 | 106 | 1822 | 23 |
| 2011/4/22 20:00 | 0.05 | 5200 | 24.2 | 5 | 28.3 | 107 | 2011 | 23 |
| 2011/4/22 22:00 | 0.05 | 5200 | 24.2 | 5 | 28.3 | 107 | 2010 | 23 |
| 2011/4/23 0:00 | 0.05 | 5200 | 24.2 | 5 | 28.2 | 107 | 1943 | 23 |
| 2011/4/23 2:00 | 0.05 | 5200 | 24.2 | 5 | 28.2 | 107 | 1943 | 23 |
| 2011/4/23 4:00 | 0.05 | 5200 | 24.2 | 5 | 28.2 | 107 | 1942 | 23 |
| 2011/4/23 6:00 | 0.05 | 5200 | 24.1 | 5 | 28.2 | 107 | 1941 | 23 |
| 2011/4/23 8:00 | 0.05 | 5200 | 24.1 | 5 | 28.2 | 107 | 1941 | 23 |
| 2011/4/23 10:00 | 0.05 | 5200 | 24.1 | 6 | 28.3 | 107 | 1942 | 23 |
| 2011/4/23 12:00 | 0.05 | 5200 | 24.1 | 6 | 28.2 | 107 | 1939 | 23 |
| 2011/4/23 14:00 | | | | | | | | |
| 2011/4/23 16:00 | | | | | | | | |
| 2011/4/23 18:00 | | | | | | | | |
| 2011/4/23 20:00 | | | | | | | | |
| 2011/4/23 22:00 | | | | | | | | |
| 2011/4/24 0:00 | | | | | | | | |
| 2011/4/24 2:00 | | | | | | | | |
| 2011/4/24 4:00 | | | | | | | | |
| 2011/4/24 6:00 | | | | | | | | |
| 2011/4/24 8:00 | | | | | | | | |
| 2011/4/24 10:00 | | | | | | | | |
| 2011/4/24 12:00 | | | | | | | | |
| 2011/4/24 14:00 | | | | | | | | |
| 2011/4/24 16:00 | | | | | | | | |
| 2011/4/24 18:00 | | | | | | | | |
| 2011/4/24 20:00 | | | | | | | | |
| 2011/4/24 22:00 | | | | | | | | |
| 2011/4/25 0:00 | | | | | | | | |

2F-2号機

※燃料頂部(TAF)からの水位=炉水位+4200[mm]

| 時間 | 炉圧 [MPa (gage)] | 炉水位 [mm] 停止時 | 炉水温度[°C] 給水/スル温度 | D/W圧力 [kPa(gage)] | D/W温度 [°C] | S/C圧力 [kPa(abs)] | S/C水位 [mm] | S/C温度 [°C] |
|-----------------|-----------------------|--------------------|---------------------|----------------------|---------------|---------------------|---------------|---------------|
| 2011/4/22 0:00 | 0.03 | 6100 | 24.7 | 2.4 | 29.6 | 104 | 1200 | 24 |
| 2011/4/22 2:00 | 0.03 | 6100 | 24.7 | 2.5 | 29.5 | 104 | 1200 | 24 |
| 2011/4/22 4:00 | 0.04 | 6100 | 24.7 | 2.6 | 29.5 | 104 | 1200 | 24 |
| 2011/4/22 6:00 | 0.03 | 6100 | 24.7 | 2.6 | 29.5 | 104 | 1200 | 24 |
| 2011/4/22 8:00 | 0.04 | 6100 | 24.7 | 2.6 | 29.5 | 104 | 1200 | 24 |
| 2011/4/22 10:00 | 0.03 | 6100 | 24.7 | 2.7 | 29.5 | 104 | 1200 | 24 |
| 2011/4/22 12:00 | 0.03 | 6100 | 24.7 | 2.8 | 29.5 | 104 | 1200 | 24 |
| 2011/4/22 14:00 | 0.04 | 6100 | 24.7 | 2.9 | 29.5 | 104 | 1200 | 24 |
| 2011/4/22 16:00 | 0.04 | 6100 | 24.7 | 2.8 | 29.5 | 104 | 1200 | 24 |
| 2011/4/22 18:00 | 0.03 | 6100 | 24.8 | 2.8 | 29.2 | 103 | 1200 | 24 |
| 2011/4/22 20:00 | 0.04 | 6100 | 24.7 | 2.8 | 29.4 | 103 | 1200 | 24 |
| 2011/4/22 22:00 | 0.04 | 6100 | 24.7 | 2.8 | 29.4 | 103 | 1200 | 24 |
| 2011/4/23 0:00 | 0.04 | 6100 | 24.8 | 2.9 | 29.4 | 104 | 1200 | 24 |
| 2011/4/23 2:00 | 0.04 | 6100 | 24.7 | 3.1 | 29.2 | 104 | 1200 | 24 |
| 2011/4/23 4:00 | 0.04 | 6100 | 24.7 | 3.2 | 29.2 | 104 | 1200 | 24 |
| 2011/4/23 6:00 | 0.04 | 6100 | 24.7 | 3.3 | 29.4 | 104 | 1200 | 24 |
| 2011/4/23 8:00 | 0.04 | 6100 | 24.7 | 3.4 | 29.4 | 104 | 1200 | 24 |
| 2011/4/23 10:00 | 0.04 | 6050 | 24.7 | 3.5 | 29.4 | 104 | 1200 | 24 |
| 2011/4/23 12:00 | 0.04 | 6050 | 24.7 | 3.7 | 29.2 | 104 | 1200 | 24 |
| 2011/4/23 14:00 | | | | | | | | |
| 2011/4/23 16:00 | | | | | | | | |
| 2011/4/23 18:00 | | | | | | | | |
| 2011/4/23 20:00 | | | | | | | | |
| 2011/4/23 22:00 | | | | | | | | |
| 2011/4/24 0:00 | | | | | | | | |
| 2011/4/24 2:00 | | | | | | | | |
| 2011/4/24 4:00 | | | | | | | | |
| 2011/4/24 6:00 | | | | | | | | |
| 2011/4/24 8:00 | | | | | | | | |
| 2011/4/24 10:00 | | | | | | | | |
| 2011/4/24 12:00 | | | | | | | | |
| 2011/4/24 14:00 | | | | | | | | |
| 2011/4/24 16:00 | | | | | | | | |
| 2011/4/24 18:00 | | | | | | | | |
| 2011/4/24 20:00 | | | | | | | | |
| 2011/4/24 22:00 | | | | | | | | |
| 2011/4/25 0:00 | | | | | | | | |

2F-3号機

※燃料頂部(TAF)からの水位=炉水位+4200[mm]

| 時間 | 炉圧 [MPa (gage)] | 炉水位 [mm] アッセット | 炉水温度[°C] 給水/スル温度 | D/W圧力 [kPa(gage)] | D/W温度 [°C] | S/C圧力 [kPa(abs)] | S/C水位 [mm] | S/C温度 [°C] |
|------------------------|-----------------------|----------------------|---------------------|----------------------|---------------|---------------------|---------------|---------------|
| 2011/4/22 0:00 | 0.00 | 3594 | 33.3 | 9 | 33.7 | 110 | 2100 | 26 |
| 2011/4/22 2:00 | 0.00 | 3594 | 33.3 | 9 | 33.7 | 111 | 2100 | 26 |
| 2011/4/22 4:00 | 0.00 | 3594 | 33.2 | 9 | 33.7 | 111 | 2100 | 26 |
| 2011/4/22 6:00 | 0.00 | 3594 | 33.2 | 9 | 33.7 | 110 | 2100 | 26 |
| 2011/4/22 8:00 | 0.00 | 3593 | 33.1 | 9 | 33.7 | 110 | 2100 | 26 |
| 2011/4/22 10:00 | 0.00 | 3593 | 33.1 | 9 | 33.7 | 110 | 2100 | 26 |
| 2011/4/22 12:00 | 0.00 | 3593 | 33.0 | 9 | 33.8 | 110 | 2100 | 26 |
| 2011/4/22 14:00 | 0.00 | 3593 | 33.0 | 9 | 33.6 | 110 | 2100 | 26 |
| 2011/4/22 16:00 | 0.00 | 3593 | 33.0 | 9 | 33.7 | 111 | 2100 | 26 |
| 2011/4/22 18:00 | 0.00 | 3593 | 33.0 | 9 | 33.6 | 111 | 2100 | 26 |
| 2011/4/22 20:00 | 0.00 | 3593 | 33.0 | 9 | 33.6 | 111 | 2100 | 26 |
| 2011/4/22 22:00 | 0.00 | 3592 | 32.9 | 9 | 33.6 | 111 | 2100 | 26 |
| 2011/4/23 0:00 | 0.00 | 3592 | 32.9 | 9 | 33.5 | 111 | 2100 | 26 |
| 2011/4/23 2:00 | 0.00 | 3593 | 32.9 | 9 | 33.5 | 110 | 2100 | 26 |
| 2011/4/23 4:00 | 0.00 | 3593 | 32.8 | 9 | 33.5 | 110 | 2100 | 26 |
| 2011/4/23 6:00 | 0.00 | 3592 | 32.8 | 9 | 33.5 | 111 | 2100 | 26 |
| 2011/4/23 8:00 | 0.00 | 3592 | 32.7 | 10 | 33.6 | 110 | 2100 | 26 |
| 2011/4/23 10:00 | 0.00 | 3590 | 32.7 | 10 | 33.4 | 110 | 2100 | 26 |
| 2011/4/23 12:00 | 0.00 | 3590 | 32.7 | 10 | 33.4 | 110 | 2100 | 26 |
| 2011/4/23 14:00 | | | | | | | | |
| 2011/4/23 16:00 | | | | | | | | |
| 2011/4/23 18:00 | | | | | | | | |
| 2011/4/23 20:00 | | | | | | | | |
| 2011/4/23 22:00 | | | | | | | | |
| 2011/4/24 0:00 | | | | | | | | |
| 2011/4/24 2:00 | | | | | | | | |
| 2011/4/24 4:00 | | | | | | | | |
| 2011/4/24 6:00 | | | | | | | | |
| 2011/4/24 8:00 | | | | | | | | |
| 2011/4/24 10:00 | | | | | | | | |
| 2011/4/24 12:00 | | | | | | | | |
| 2011/4/24 14:00 | | | | | | | | |
| 2011/4/24 16:00 | | | | | | | | |
| 2011/4/24 18:00 | | | | | | | | |
| 2011/4/24 20:00 | | | | | | | | |
| 2011/4/24 22:00 | | | | | | | | |
| 2011/4/25 0:00 | | | | | | | | |

2F-4号機

※燃料頂部(TAF)からの水位=炉水位+4200[mm]

| 時間 | 炉圧 [MPa (gage)] | 炉水位 [mm] アツプセット | 炉水温度[°C] 給水/スル温度 | D/W圧力 [kPa(gage)] | D/W温度 [°C] | S/C圧力 [kPa(abs)] | S/C水位 [mm] | S/C温度 [°C] |
|-----------------|-----------------------|-----------------------|---------------------|----------------------|---------------|---------------------|---------------|---------------|
| 2011/4/22 0:00 | 0.07 | 4589 | 28.2 | 5 | 32.3 | 107 | 2000 | 29 |
| 2011/4/22 2:00 | 0.07 | 4589 | 28.2 | 5 | 32.7 | 106 | 2000 | 29 |
| 2011/4/22 4:00 | 0.07 | 4589 | 28.2 | 5 | 32.7 | 106 | 2000 | 29 |
| 2011/4/22 6:00 | 0.07 | 4589 | 28.2 | 5 | 32.9 | 107 | 2000 | 29 |
| 2011/4/22 8:00 | 0.07 | 4589 | 28.1 | 5 | 32.2 | 107 | 2000 | 29 |
| 2011/4/22 10:00 | 0.07 | 4589 | 28.1 | 5 | 32.3 | 106 | 2000 | 29 |
| 2011/4/22 12:00 | 0.07 | 4589 | 28.2 | 5 | 32.6 | 106 | 2000 | 29 |
| 2011/4/22 14:00 | 0.07 | 4589 | 28.1 | 5 | 32.6 | 106 | 2000 | 29 |
| 2011/4/22 16:00 | 0.07 | 4589 | 28.1 | 5 | 32.1 | 106 | 2000 | 29 |
| 2011/4/22 18:00 | 0.07 | 4589 | 28.1 | 5 | 32.3 | 106 | 2000 | 29 |
| 2011/4/22 20:00 | 0.07 | 4589 | 28.1 | 5 | 32.3 | 106 | 2000 | 29 |
| 2011/4/22 22:00 | 0.07 | 4589 | 28.0 | 5 | 32.4 | 106 | 2000 | 29 |
| 2011/4/23 0:00 | 0.07 | 4589 | 28.0 | 5 | 32.1 | 106 | 2000 | 29 |
| 2011/4/23 2:00 | 0.07 | 4589 | 28.0 | 5 | 32.3 | 107 | 2000 | 29 |
| 2011/4/23 4:00 | 0.07 | 4589 | 28.0 | 5 | 32.7 | 106 | 2000 | 29 |
| 2011/4/23 6:00 | 0.07 | 4589 | 28.0 | 5 | 32.2 | 106 | 2000 | 29 |
| 2011/4/23 8:00 | 0.07 | 4589 | 28.0 | 5 | 31.9 | 106 | 2000 | 29 |
| 2011/4/23 10:00 | 0.07 | 4589 | 28.0 | 5 | 31.9 | 106 | 2000 | 29 |
| 2011/4/23 12:00 | 0.07 | 4589 | 28.0 | 6 | 32.4 | 106 | 2050 | 29 |
| 2011/4/23 14:00 | | | | | | | | |
| 2011/4/23 16:00 | | | | | | | | |
| 2011/4/23 18:00 | | | | | | | | |
| 2011/4/23 20:00 | | | | | | | | |
| 2011/4/23 22:00 | | | | | | | | |
| 2011/4/24 0:00 | | | | | | | | |
| 2011/4/24 2:00 | | | | | | | | |
| 2011/4/24 4:00 | | | | | | | | |
| 2011/4/24 6:00 | | | | | | | | |
| 2011/4/24 8:00 | | | | | | | | |
| 2011/4/24 10:00 | | | | | | | | |
| 2011/4/24 12:00 | | | | | | | | |
| 2011/4/24 14:00 | | | | | | | | |
| 2011/4/24 16:00 | | | | | | | | |
| 2011/4/24 18:00 | | | | | | | | |
| 2011/4/24 20:00 | | | | | | | | |
| 2011/4/24 22:00 | | | | | | | | |
| 2011/4/25 0:00 | | | | | | | | |

2F-1号機

※燃料頂部(TAF)からの水位=炉水位+4200[mm]

| 時間 | 炉圧 [MPa (gage)] | 炉水位 [mm] 停止時 | 炉水温度[°C] 給水/スル温度 | D/W圧力 [kPa(gage)] | D/W温度 [°C] | S/C圧力 [kPa(abs)] | S/C水位 [mm] | S/C温度 [°C] |
|-----------------|-----------------------|--------------------|---------------------|----------------------|---------------|---------------------|---------------|---------------|
| 2011/4/22 0:00 | 0.05 | 5150 | 24.2 | 2 | 28.4 | 105 | 1436 | 23 |
| 2011/4/22 2:00 | 0.05 | 5150 | 24.2 | 2 | 28.4 | 105 | 1436 | 23 |
| 2011/4/22 4:00 | 0.05 | 5150 | 24.2 | 2 | 28.4 | 105 | 1436 | 23 |
| 2011/4/22 6:00 | 0.05 | 5150 | 24.2 | 2 | 28.4 | 105 | 1436 | 23 |
| 2011/4/22 8:00 | 0.05 | 5150 | 24.1 | 2 | 28.4 | 105 | 1436 | 23 |
| 2011/4/22 10:00 | 0.05 | 5150 | 24.2 | 2 | 28.4 | 105 | 1436 | 23 |
| 2011/4/22 12:00 | 0.05 | 5150 | 24.2 | 2 | 28.4 | 105 | 1436 | 23 |
| 2011/4/22 14:00 | 0.05 | 5150 | 24.2 | 2 | 28.4 | 105 | 1436 | 23 |
| 2011/4/22 16:00 | 0.05 | 5150 | 24.2 | 3 | 28.4 | 105 | 1551 | 23 |
| 2011/4/22 18:00 | 0.05 | 5200 | 24.2 | 4 | 28.4 | 106 | 1822 | 23 |
| 2011/4/22 20:00 | 0.05 | 5200 | 24.2 | 5 | 28.3 | 107 | 2011 | 23 |
| 2011/4/22 22:00 | 0.05 | 5200 | 24.2 | 5 | 28.3 | 107 | 2010 | 23 |
| 2011/4/23 0:00 | 0.05 | 5200 | 24.2 | 5 | 28.2 | 107 | 1943 | 23 |
| 2011/4/23 2:00 | 0.05 | 5200 | 24.2 | 5 | 28.2 | 107 | 1943 | 23 |
| 2011/4/23 4:00 | 0.05 | 5200 | 24.2 | 5 | 28.2 | 107 | 1942 | 23 |
| 2011/4/23 6:00 | 0.05 | 5200 | 24.1 | 5 | 28.2 | 107 | 1941 | 23 |
| 2011/4/23 8:00 | 0.05 | 5200 | 24.1 | 5 | 28.2 | 107 | 1941 | 23 |
| 2011/4/23 10:00 | 0.05 | 5200 | 24.1 | 6 | 28.3 | 107 | 1942 | 23 |
| 2011/4/23 12:00 | 0.05 | 5200 | 24.1 | 6 | 28.2 | 107 | 1939 | 23 |
| 2011/4/23 14:00 | 0.05 | 5200 | 24.1 | 6 | 28.1 | 107 | 1940 | 23 |
| 2011/4/23 16:00 | 0.05 | 5200 | 24.1 | 6 | 28.1 | 107 | 1940 | 23 |
| 2011/4/23 18:00 | 0.05 | 5200 | 24.0 | 6 | 28.1 | 105 | 1940 | 23 |
| 2011/4/23 20:00 | | | | | | | | |
| 2011/4/23 22:00 | | | | | | | | |
| 2011/4/24 0:00 | | | | | | | | |
| 2011/4/24 2:00 | | | | | | | | |
| 2011/4/24 4:00 | | | | | | | | |
| 2011/4/24 6:00 | | | | | | | | |
| 2011/4/24 8:00 | | | | | | | | |
| 2011/4/24 10:00 | | | | | | | | |
| 2011/4/24 12:00 | | | | | | | | |
| 2011/4/24 14:00 | | | | | | | | |
| 2011/4/24 16:00 | | | | | | | | |
| 2011/4/24 18:00 | | | | | | | | |
| 2011/4/24 20:00 | | | | | | | | |
| 2011/4/24 22:00 | | | | | | | | |
| 2011/4/25 0:00 | | | | | | | | |

2F-2号機

※燃料頂部(TAF)からの水位=炉水位+4200[mm]

| 時間 | 炉圧 [MPa (gage)] | 炉水位 [mm] 停止時 | 炉水温度[°C] 給水/スル温度 | D/W圧力 [kPa(gage)] | D/W温度 [°C] | S/C圧力 [kPa(abs)] | S/C水位 [mm] | S/C温度 [°C] |
|------------------------|-----------------------|--------------------|---------------------|----------------------|---------------|---------------------|---------------|---------------|
| 2011/4/22 0:00 | 0.03 | 6100 | 24.7 | 2.4 | 29.6 | 104 | 1200 | 24 |
| 2011/4/22 2:00 | 0.03 | 6100 | 24.7 | 2.5 | 29.5 | 104 | 1200 | 24 |
| 2011/4/22 4:00 | 0.04 | 6100 | 24.7 | 2.6 | 29.5 | 104 | 1200 | 24 |
| 2011/4/22 6:00 | 0.03 | 6100 | 24.7 | 2.6 | 29.5 | 104 | 1200 | 24 |
| 2011/4/22 8:00 | 0.04 | 6100 | 24.7 | 2.6 | 29.5 | 104 | 1200 | 24 |
| 2011/4/22 10:00 | 0.03 | 6100 | 24.7 | 2.7 | 29.5 | 104 | 1200 | 24 |
| 2011/4/22 12:00 | 0.03 | 6100 | 24.7 | 2.8 | 29.5 | 104 | 1200 | 24 |
| 2011/4/22 14:00 | 0.04 | 6100 | 24.7 | 2.9 | 29.5 | 104 | 1200 | 24 |
| 2011/4/22 16:00 | 0.04 | 6100 | 24.7 | 2.8 | 29.5 | 104 | 1200 | 24 |
| 2011/4/22 18:00 | 0.03 | 6100 | 24.8 | 2.8 | 29.2 | 103 | 1200 | 24 |
| 2011/4/22 20:00 | 0.04 | 6100 | 24.7 | 2.8 | 29.4 | 103 | 1200 | 24 |
| 2011/4/22 22:00 | 0.04 | 6100 | 24.7 | 2.8 | 29.4 | 103 | 1200 | 24 |
| 2011/4/23 0:00 | 0.04 | 6100 | 24.8 | 2.9 | 29.4 | 104 | 1200 | 24 |
| 2011/4/23 2:00 | 0.04 | 6100 | 24.7 | 3.1 | 29.2 | 104 | 1200 | 24 |
| 2011/4/23 4:00 | 0.04 | 6100 | 24.7 | 3.2 | 29.2 | 104 | 1200 | 24 |
| 2011/4/23 6:00 | 0.04 | 6100 | 24.7 | 3.3 | 29.4 | 104 | 1200 | 24 |
| 2011/4/23 8:00 | 0.04 | 6100 | 24.7 | 3.4 | 29.4 | 104 | 1200 | 24 |
| 2011/4/23 10:00 | 0.04 | 6050 | 24.7 | 3.5 | 29.4 | 104 | 1200 | 24 |
| 2011/4/23 12:00 | 0.04 | 6050 | 24.7 | 3.7 | 29.2 | 104 | 1200 | 24 |
| 2011/4/23 14:00 | 0.03 | 6050 | 24.7 | 3.9 | 29.4 | 104 | 1200 | 24 |
| 2011/4/23 16:00 | 0.04 | 6050 | 24.7 | 4.0 | 29.2 | 104 | 1200 | 24 |
| 2011/4/23 18:00 | 0.03 | 6050 | 24.7 | 4.1 | 29.2 | 104 | 1200 | 24 |
| 2011/4/23 20:00 | | | | | | | | |
| 2011/4/23 22:00 | | | | | | | | |
| 2011/4/24 0:00 | | | | | | | | |
| 2011/4/24 2:00 | | | | | | | | |
| 2011/4/24 4:00 | | | | | | | | |
| 2011/4/24 6:00 | | | | | | | | |
| 2011/4/24 8:00 | | | | | | | | |
| 2011/4/24 10:00 | | | | | | | | |
| 2011/4/24 12:00 | | | | | | | | |
| 2011/4/24 14:00 | | | | | | | | |
| 2011/4/24 16:00 | | | | | | | | |
| 2011/4/24 18:00 | | | | | | | | |
| 2011/4/24 20:00 | | | | | | | | |
| 2011/4/24 22:00 | | | | | | | | |
| 2011/4/25 0:00 | | | | | | | | |

11. 4. 22

東京電力(株) 原子力発電 五福班

11年 4月25日 05時45分

2F-3号機

※燃料頂部(TAF)からの水位=炉水位+4200[mm]

| 時間 | 炉圧 [MPa (gage)] | 炉水位 [mm] アブセット | 炉水温度[°C] 給水/スル温度 | D/W圧力 [kPa(gage)] | D/W温度 [°C] | S/C圧力 [kPa(abs)] | S/C水位 [mm] | S/C温度 [°C] |
|------------------------|-----------------------|----------------------|---------------------|----------------------|---------------|---------------------|---------------|---------------|
| 2011/4/22 0:00 | 0.00 | 3594 | 33.3 | 9 | 33.7 | 110 | 2100 | 26 |
| 2011/4/22 2:00 | 0.00 | 3594 | 33.3 | 9 | 33.7 | 111 | 2100 | 26 |
| 2011/4/22 4:00 | 0.00 | 3594 | 33.2 | 9 | 33.7 | 111 | 2100 | 26 |
| 2011/4/22 6:00 | 0.00 | 3594 | 33.2 | 9 | 33.7 | 110 | 2100 | 26 |
| 2011/4/22 8:00 | 0.00 | 3593 | 33.1 | 9 | 33.7 | 110 | 2100 | 26 |
| 2011/4/22 10:00 | 0.00 | 3593 | 33.1 | 9 | 33.7 | 110 | 2100 | 26 |
| 2011/4/22 12:00 | 0.00 | 3593 | 33.0 | 9 | 33.8 | 110 | 2100 | 26 |
| 2011/4/22 14:00 | 0.00 | 3593 | 33.0 | 9 | 33.6 | 110 | 2100 | 26 |
| 2011/4/22 16:00 | 0.00 | 3593 | 33.0 | 9 | 33.7 | 111 | 2100 | 26 |
| 2011/4/22 18:00 | 0.00 | 3593 | 33.0 | 9 | 33.6 | 111 | 2100 | 26 |
| 2011/4/22 20:00 | 0.00 | 3593 | 33.0 | 9 | 33.6 | 111 | 2100 | 26 |
| 2011/4/22 22:00 | 0.00 | 3592 | 32.9 | 9 | 33.6 | 111 | 2100 | 26 |
| 2011/4/23 0:00 | 0.00 | 3592 | 32.9 | 9 | 33.5 | 111 | 2100 | 26 |
| 2011/4/23 2:00 | 0.00 | 3593 | 32.9 | 9 | 33.5 | 110 | 2100 | 26 |
| 2011/4/23 4:00 | 0.00 | 3593 | 32.8 | 9 | 33.5 | 110 | 2100 | 26 |
| 2011/4/23 6:00 | 0.00 | 3592 | 32.8 | 9 | 33.5 | 111 | 2100 | 26 |
| 2011/4/23 8:00 | 0.00 | 3592 | 32.7 | 10 | 33.6 | 110 | 2100 | 26 |
| 2011/4/23 10:00 | 0.00 | 3590 | 32.7 | 10 | 33.4 | 110 | 2100 | 26 |
| 2011/4/23 12:00 | 0.00 | 3590 | 32.7 | 10 | 33.4 | 110 | 2100 | 26 |
| 2011/4/23 14:00 | 0.00 | 3590 | 32.7 | 10 | 33.4 | 110 | 2100 | 26 |
| 2011/4/23 16:00 | 0.00 | 3590 | 32.8 | 10 | 33.4 | 110 | 2100 | 26 |
| 2011/4/23 18:00 | 0.00 | 3590 | 32.8 | 10 | 33.4 | 110 | 2100 | 26 |
| 2011/4/23 20:00 | | | | | | | | |
| 2011/4/23 22:00 | | | | | | | | |
| 2011/4/24 0:00 | | | | | | | | |
| 2011/4/24 2:00 | | | | | | | | |
| 2011/4/24 4:00 | | | | | | | | |
| 2011/4/24 6:00 | | | | | | | | |
| 2011/4/24 8:00 | | | | | | | | |
| 2011/4/24 10:00 | | | | | | | | |
| 2011/4/24 12:00 | | | | | | | | |
| 2011/4/24 14:00 | | | | | | | | |
| 2011/4/24 16:00 | | | | | | | | |
| 2011/4/24 18:00 | | | | | | | | |
| 2011/4/24 20:00 | | | | | | | | |
| 2011/4/24 22:00 | | | | | | | | |
| 2011/4/25 0:00 | | | | | | | | |

2F-4号機

※燃料頂部(TAF)からの水位=炉水位+4200[mm]

| 時間 | 炉圧 [MPa (gage)] | 炉水位 [mm] アップセット | 炉水温度[°C] 給水/スル温度 | D/W圧力 [kPa(gage)] | D/W温度 [°C] | S/C圧力 [kPa(abs)] | S/C水位 [mm] | S/C温度 [°C] |
|------------------------|-----------------------|-----------------------|---------------------|----------------------|---------------|---------------------|---------------|---------------|
| 2011/4/22 0:00 | 0.07 | 4589 | 28.2 | 5 | 32.3 | 107 | 2000 | 29 |
| 2011/4/22 2:00 | 0.07 | 4589 | 28.2 | 5 | 32.7 | 106 | 2000 | 29 |
| 2011/4/22 4:00 | 0.07 | 4589 | 28.2 | 5 | 32.7 | 106 | 2000 | 29 |
| 2011/4/22 6:00 | 0.07 | 4589 | 28.2 | 5 | 32.9 | 107 | 2000 | 29 |
| 2011/4/22 8:00 | 0.07 | 4589 | 28.1 | 5 | 32.2 | 107 | 2000 | 29 |
| 2011/4/22 10:00 | 0.07 | 4589 | 28.1 | 5 | 32.3 | 106 | 2000 | 29 |
| 2011/4/22 12:00 | 0.07 | 4589 | 28.2 | 5 | 32.6 | 106 | 2000 | 29 |
| 2011/4/22 14:00 | 0.07 | 4589 | 28.1 | 5 | 32.6 | 106 | 2000 | 29 |
| 2011/4/22 16:00 | 0.07 | 4589 | 28.1 | 5 | 32.1 | 106 | 2000 | 29 |
| 2011/4/22 18:00 | 0.07 | 4589 | 28.1 | 5 | 32.3 | 106 | 2000 | 29 |
| 2011/4/22 20:00 | 0.07 | 4589 | 28.1 | 5 | 32.3 | 106 | 2000 | 29 |
| 2011/4/22 22:00 | 0.07 | 4589 | 28.0 | 5 | 32.4 | 106 | 2000 | 29 |
| 2011/4/23 0:00 | 0.07 | 4589 | 28.0 | 5 | 32.1 | 106 | 2000 | 29 |
| 2011/4/23 2:00 | 0.07 | 4589 | 28.0 | 5 | 32.3 | 107 | 2000 | 29 |
| 2011/4/23 4:00 | 0.07 | 4589 | 28.0 | 5 | 32.7 | 106 | 2000 | 29 |
| 2011/4/23 6:00 | 0.07 | 4589 | 28.0 | 5 | 32.2 | 106 | 2000 | 29 |
| 2011/4/23 8:00 | 0.07 | 4589 | 28.0 | 5 | 31.9 | 106 | 2000 | 29 |
| 2011/4/23 10:00 | 0.07 | 4589 | 28.0 | 5 | 31.9 | 106 | 2000 | 29 |
| 2011/4/23 12:00 | 0.07 | 4589 | 28.0 | 6 | 32.4 | 106 | 2050 | 29 |
| 2011/4/23 14:00 | 0.07 | 4589 | 28.0 | 6 | 32.0 | 106 | 2050 | 28 |
| 2011/4/23 16:00 | 0.07 | 4589 | 28.0 | 6 | 32.1 | 106 | 2050 | 29 |
| 2011/4/23 18:00 | 0.07 | 4589 | 27.9 | 6 | 32.1 | 106 | 2050 | 29 |
| 2011/4/23 20:00 | | | | | | | | |
| 2011/4/23 22:00 | | | | | | | | |
| 2011/4/24 0:00 | | | | | | | | |
| 2011/4/24 2:00 | | | | | | | | |
| 2011/4/24 4:00 | | | | | | | | |
| 2011/4/24 6:00 | | | | | | | | |
| 2011/4/24 8:00 | | | | | | | | |
| 2011/4/24 10:00 | | | | | | | | |
| 2011/4/24 12:00 | | | | | | | | |
| 2011/4/24 14:00 | | | | | | | | |
| 2011/4/24 16:00 | | | | | | | | |
| 2011/4/24 18:00 | | | | | | | | |
| 2011/4/24 20:00 | | | | | | | | |
| 2011/4/24 22:00 | | | | | | | | |
| 2011/4/25 0:00 | | | | | | | | |

NO.4333 1.4

東京電力(株)原子力発電部 五原

2011年 4月23日 18時47分