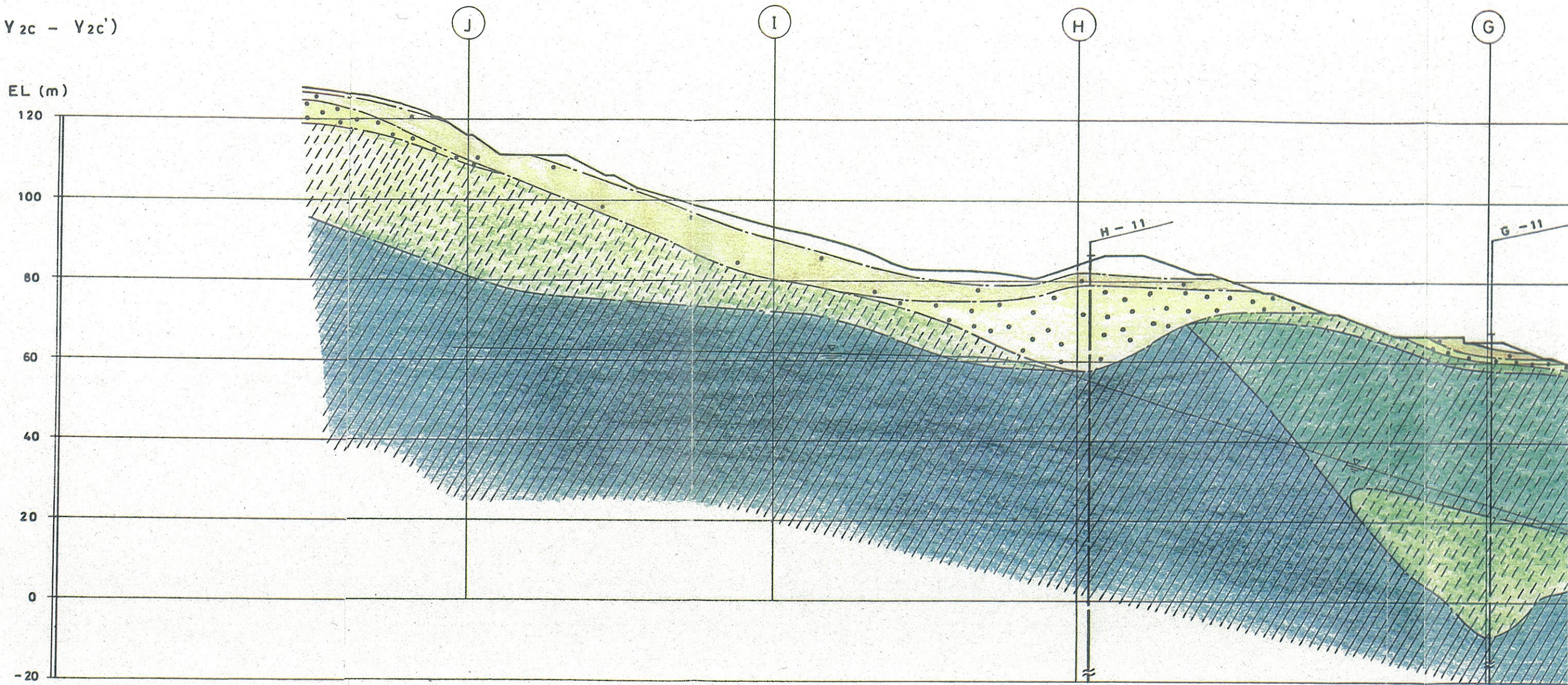
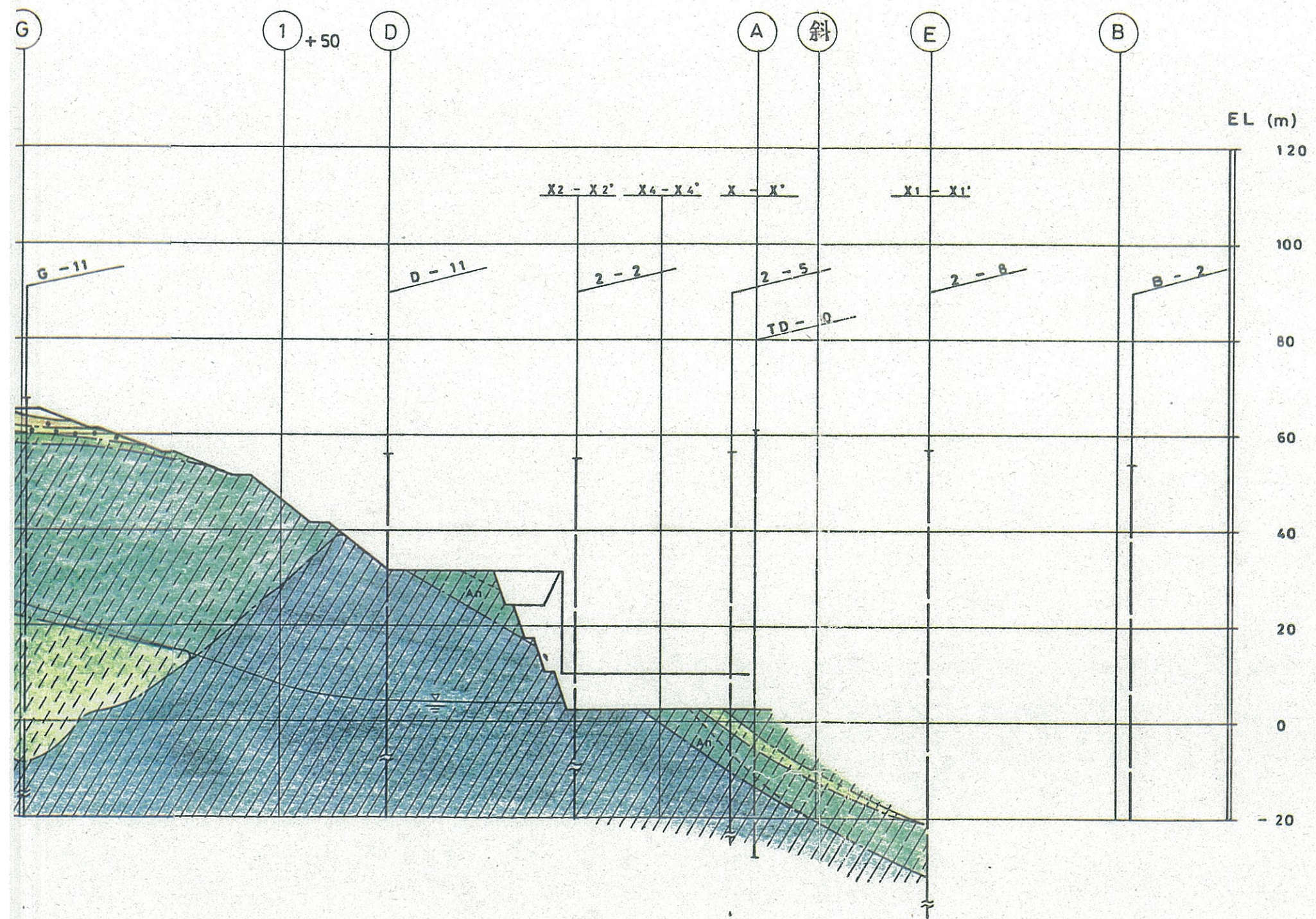


(Y<sub>2c</sub> - Y<sub>2c'</sub>)

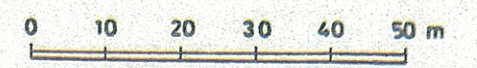




凡 例

	A 級 岩 盤
	B 級 岩 盤
	C 級 岩 盤
	D 級 岩 盤
	E 級 岩 盤
	礫・砂・粘土
	断 層

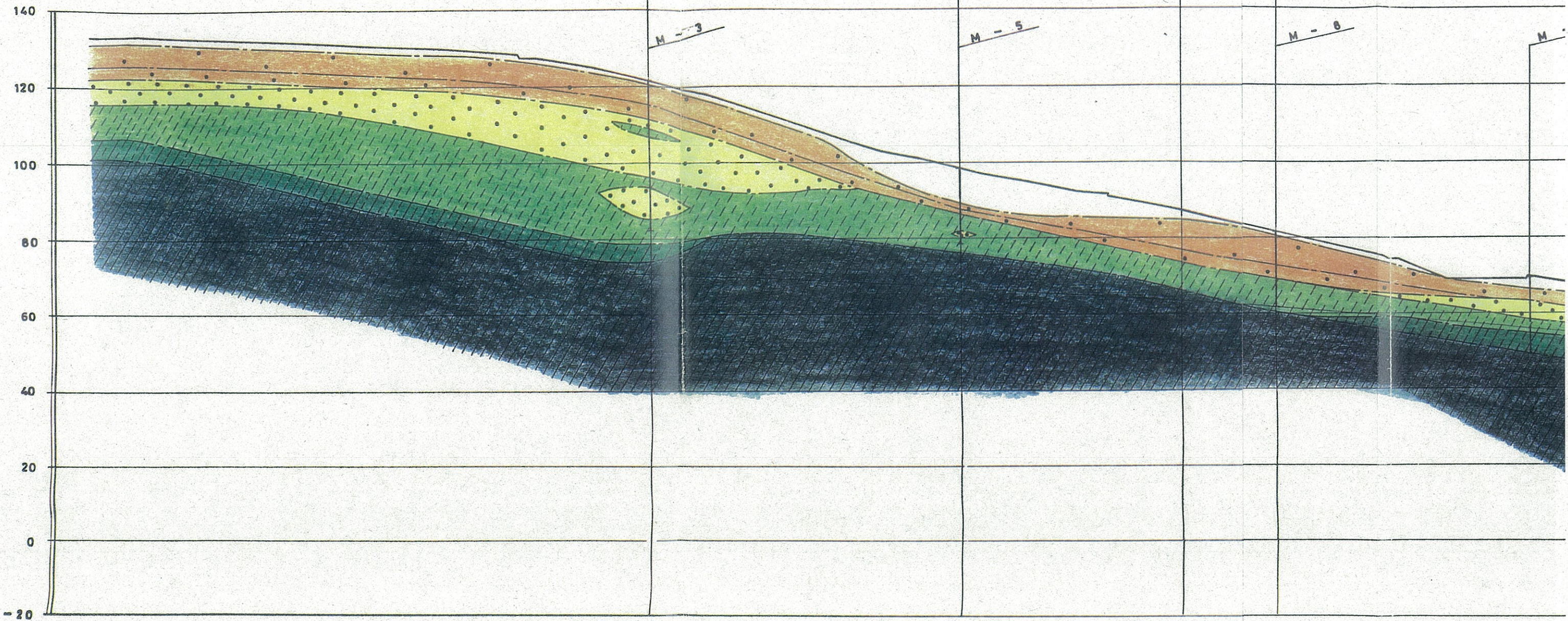
An ; 安山岩熔岩

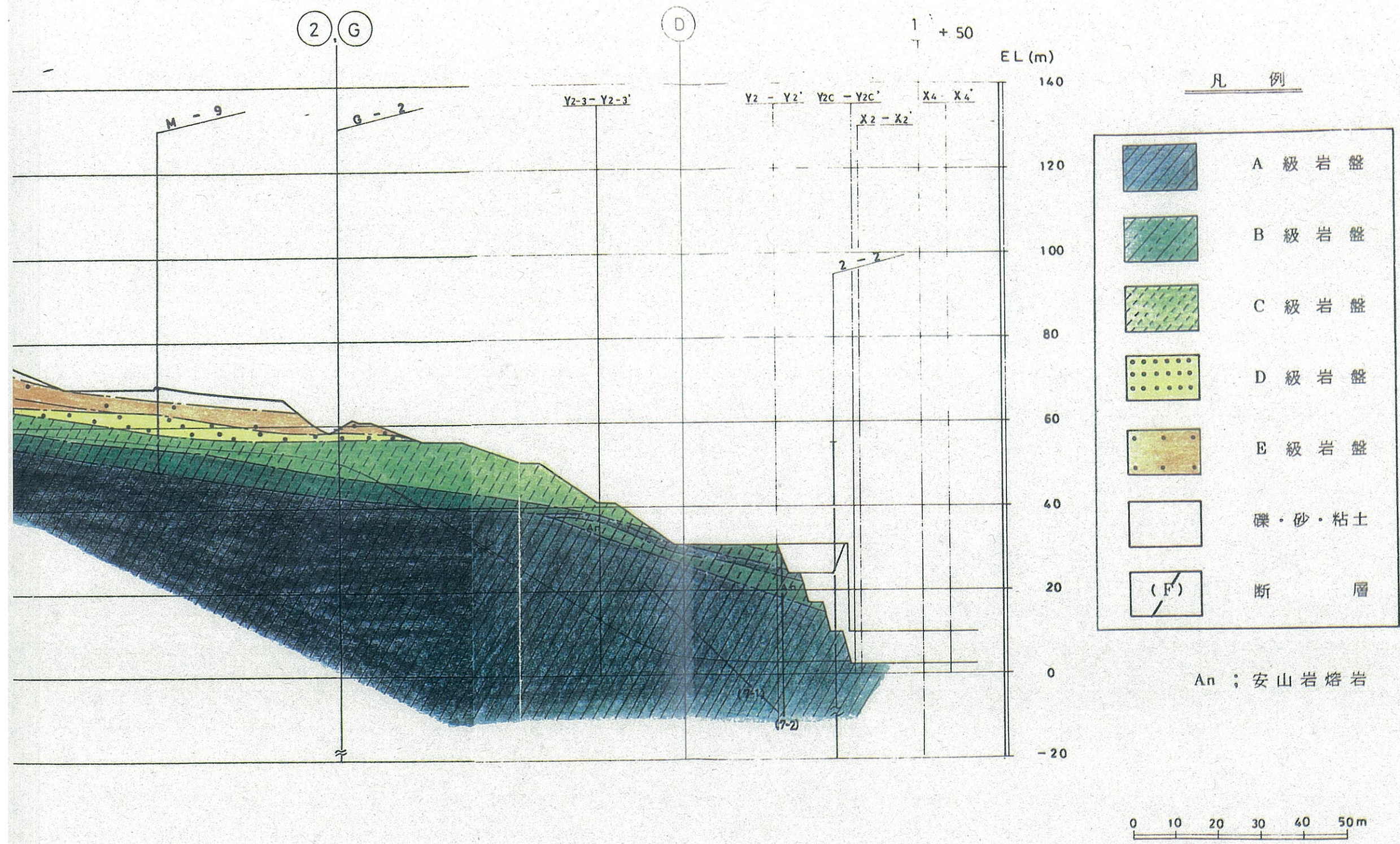


第4.2.8圖 鉛直岩盤分類圖 (Y2c - Y2c')

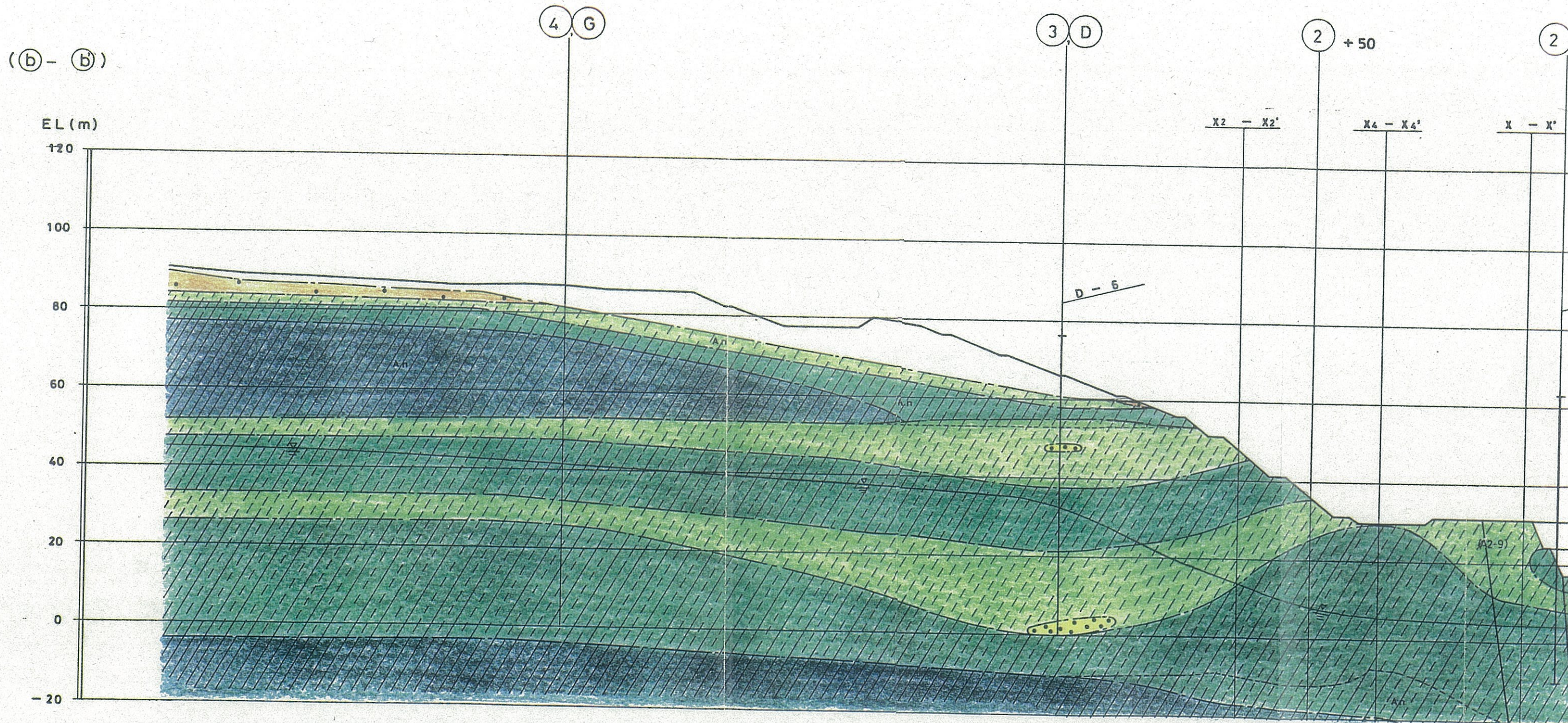
(a - a')

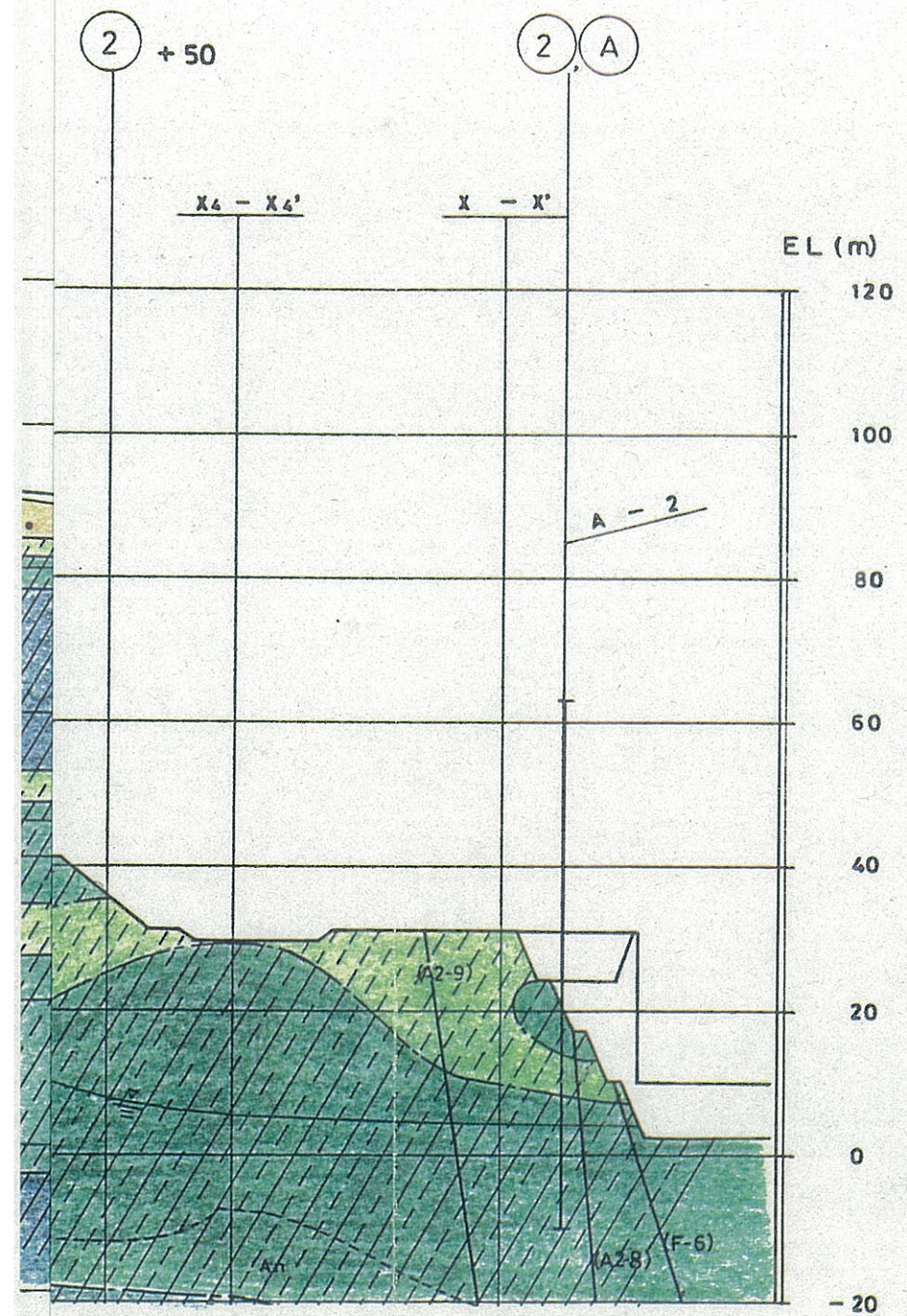
EL (m)



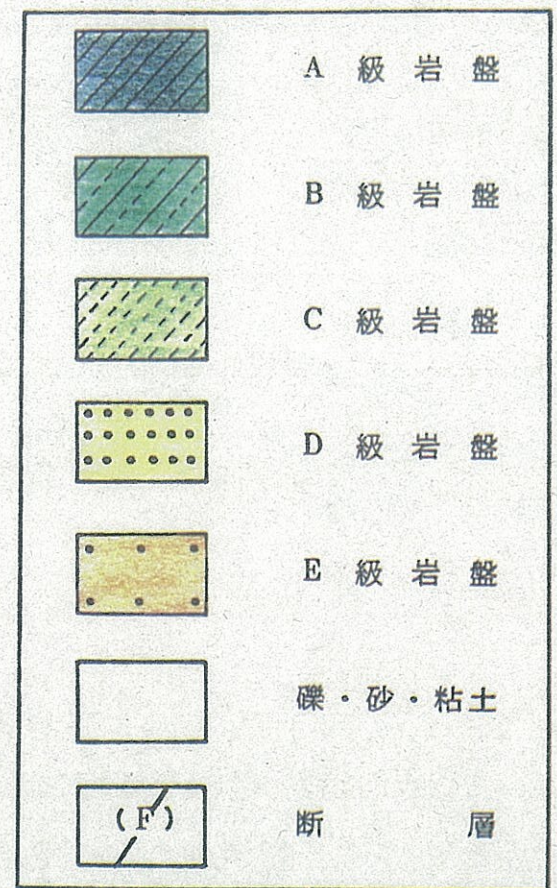


第 4.2.9 圖 鉛直岩盤分類圖 (a - a')

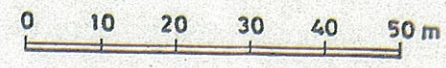




凡 例



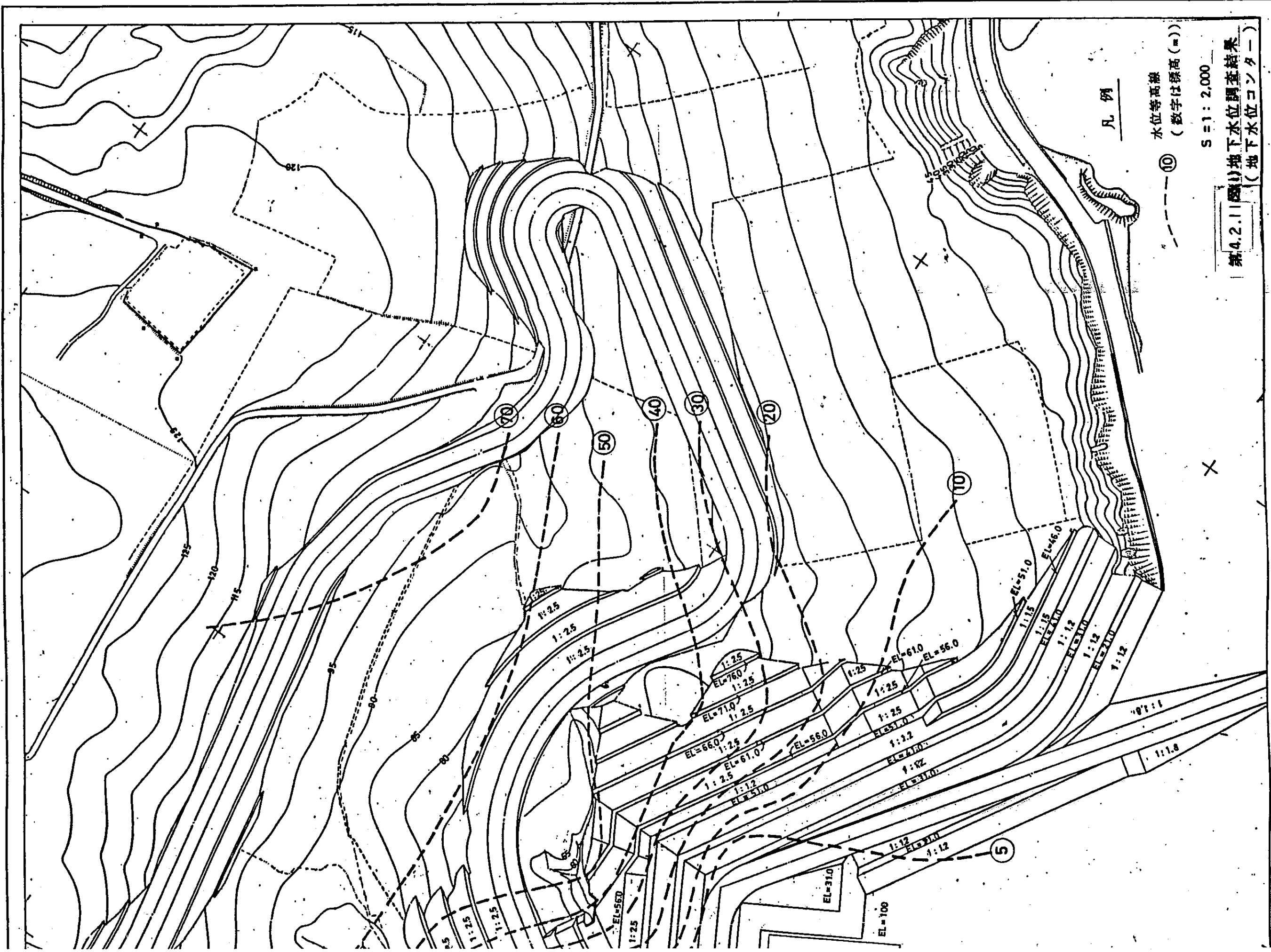
An ; 安山岩熔岩



第4.2.10図 鉛直岩盤分類図 (b) - (b)







凡例

水位等高線  
(数字は標高(m))

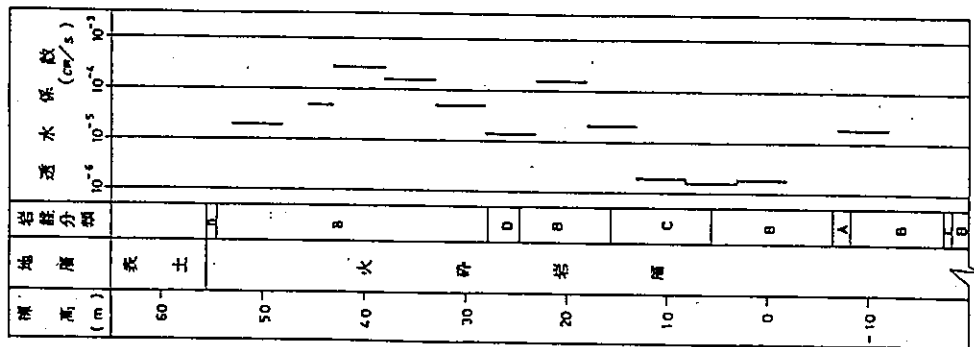
S=1:2,000

第4.2.1(四)地下水調査結果  
(地下水コンター)

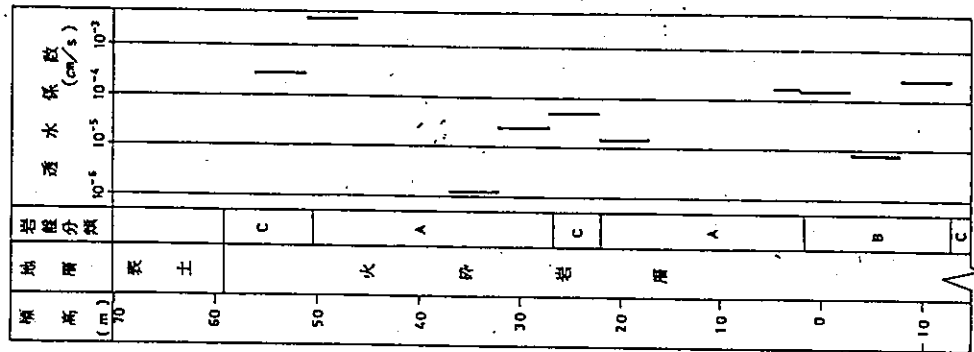




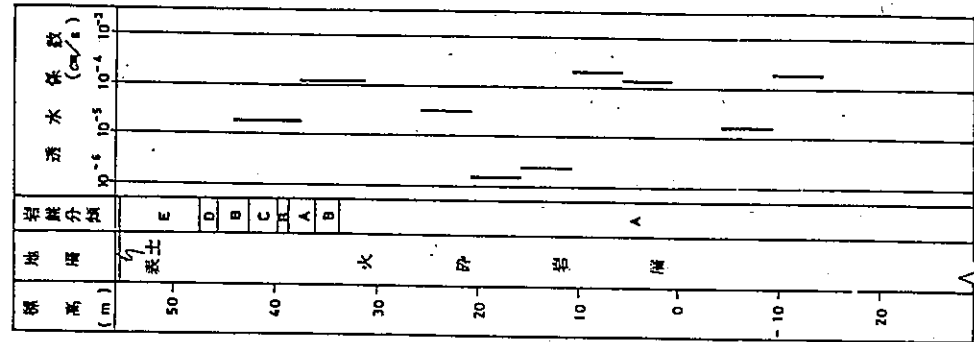
A-11孔



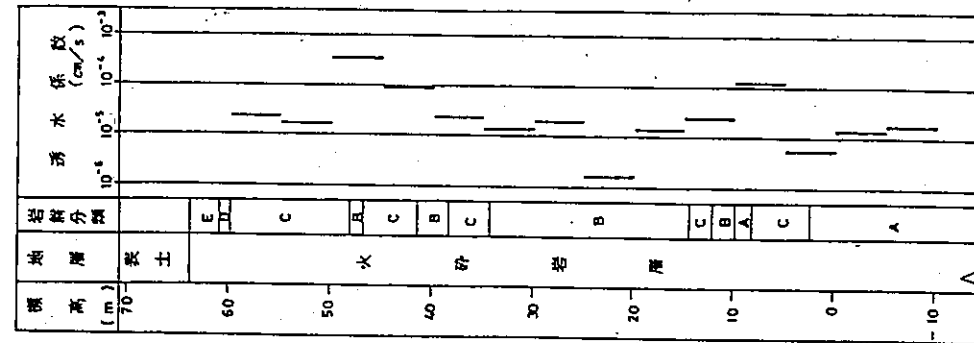
D-9孔



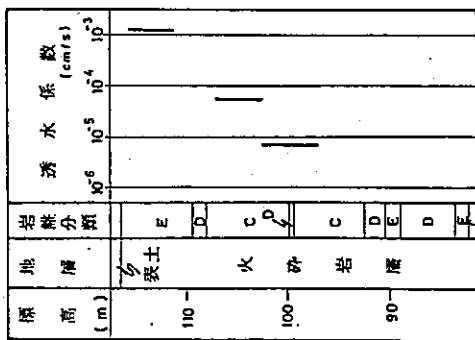
D-11孔



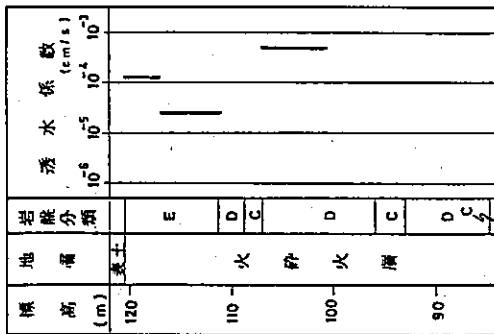
G-4孔



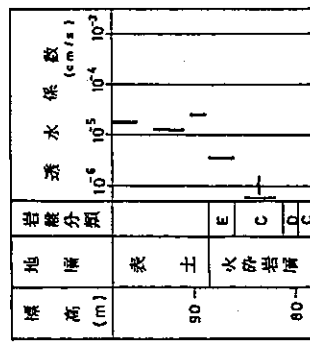
M-2 孔



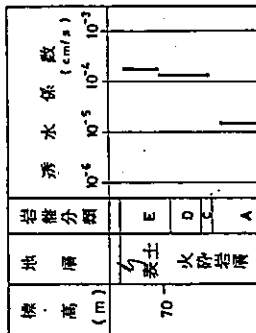
M-3 孔



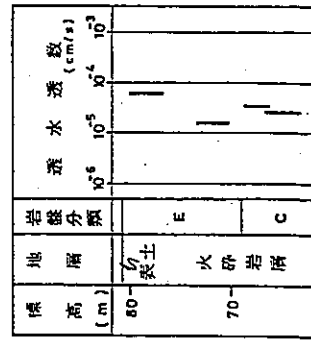
M-5 孔



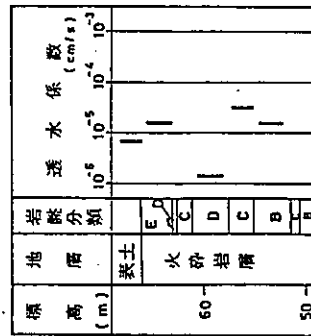
M-7 孔



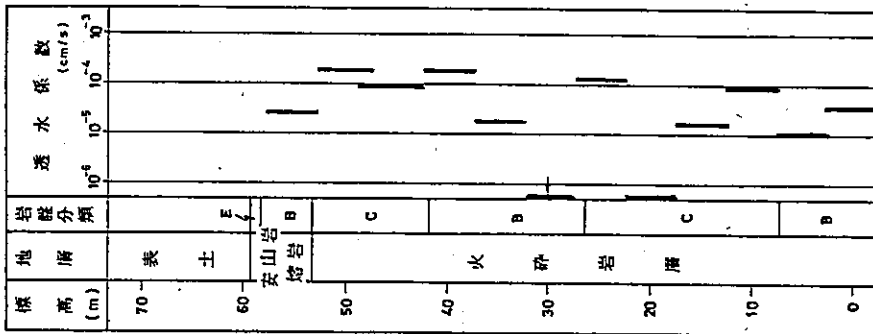
M-8 孔



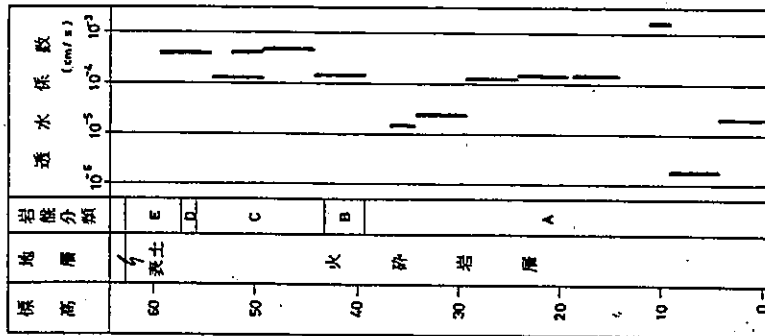
M-9 孔



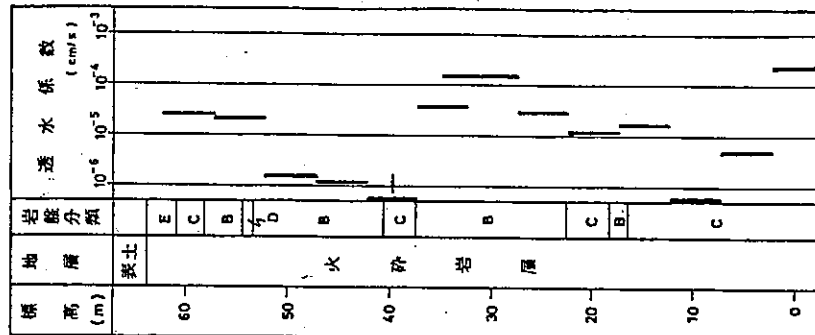
D-13 孔

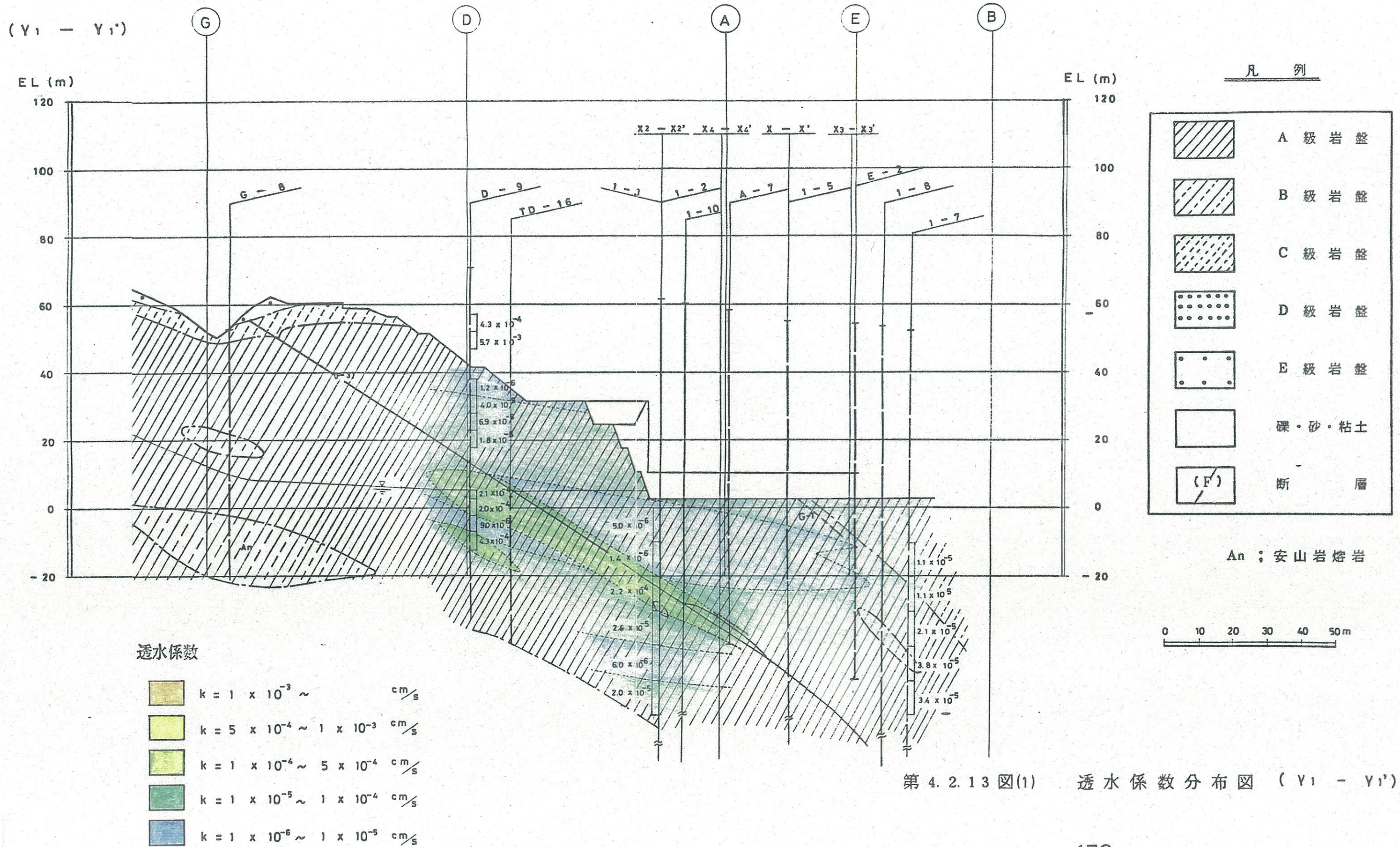


G-6 孔



G-11 孔





第 4.2.13 图(1) 透水系数分布图 (Y<sub>1</sub> - Y<sub>1</sub>')

