



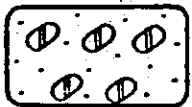
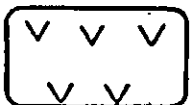
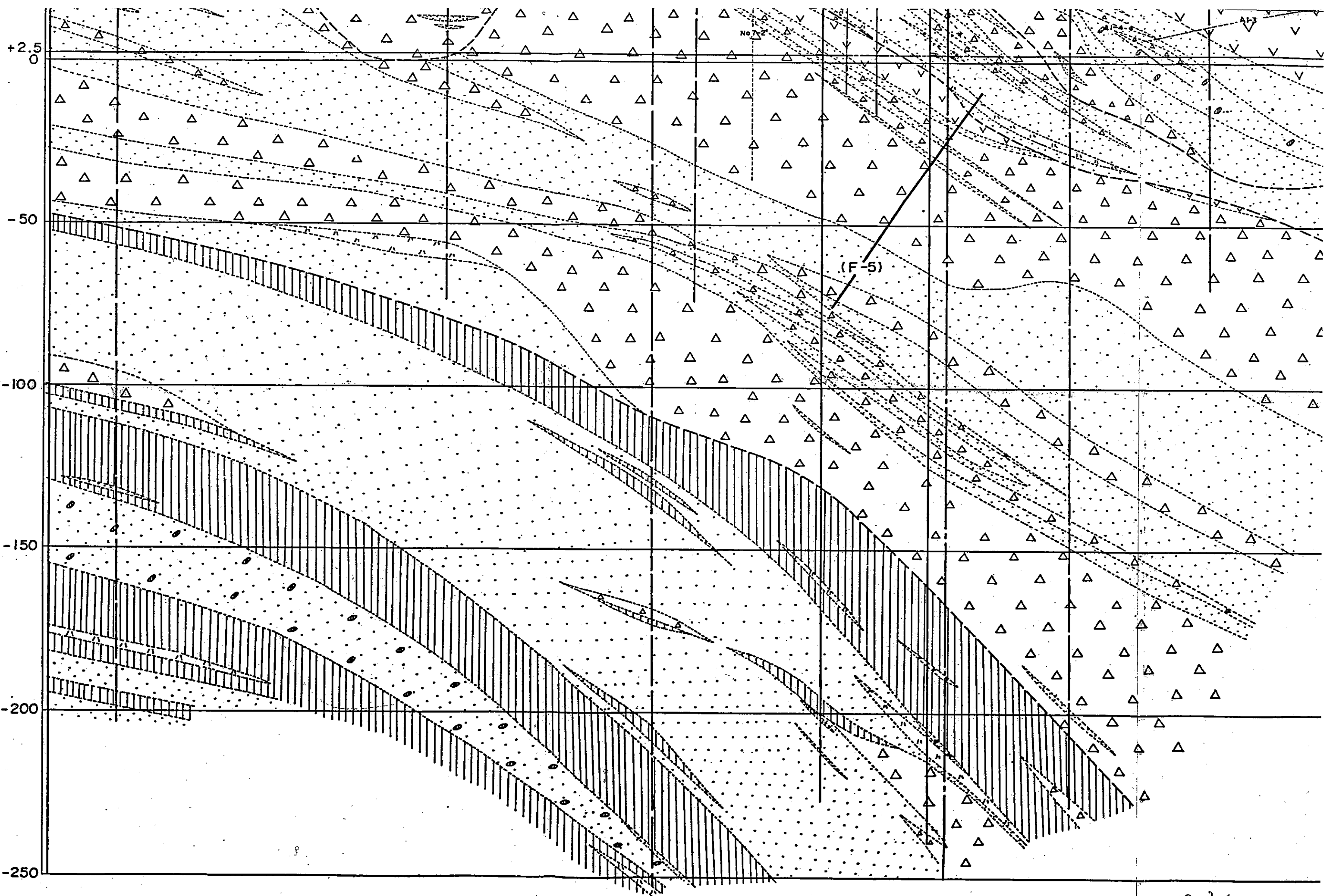
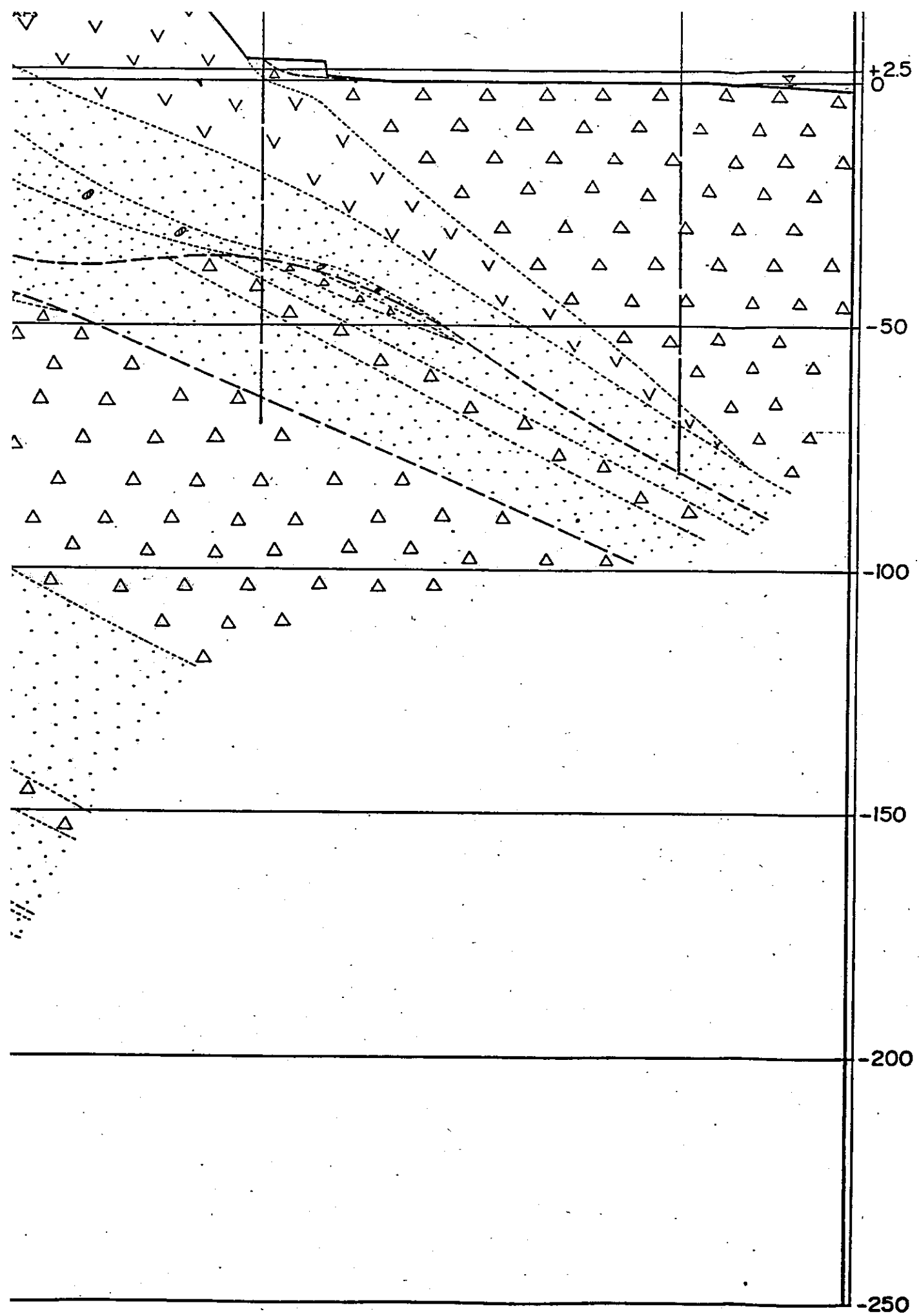


P48<sup>2</sup>/<sub>4</sub>

凡例

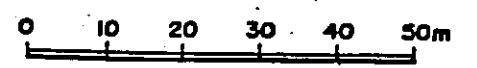
	礫·砂·粘土
	凝灰角礫岩
	凝灰岩
	輕石凝灰岩
	含泥岩礫凝灰岩
	安山岩熔岩





凡例

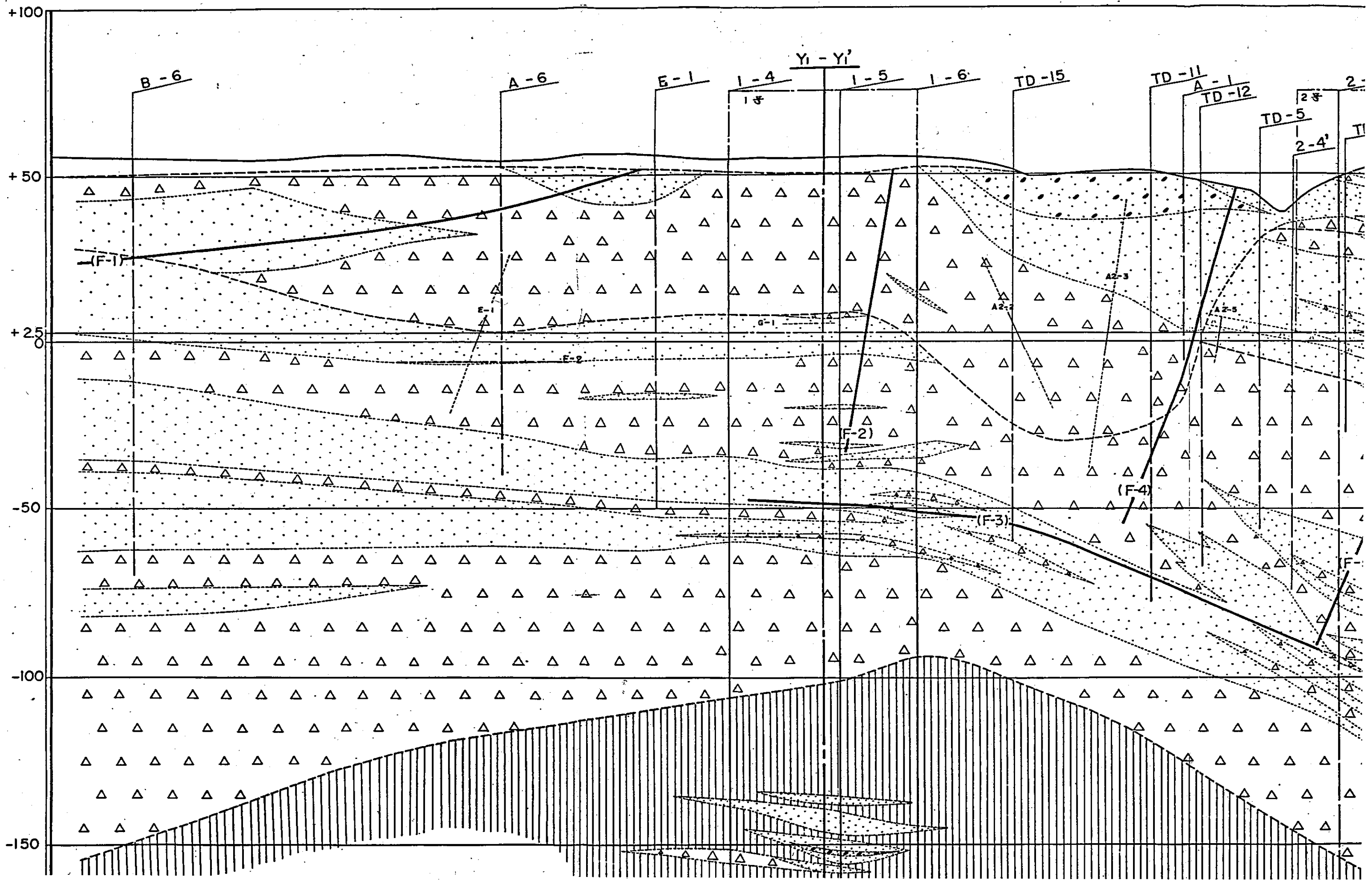
	礫·砂·粘土
	凝灰角礫岩
	凝灰岩
	輕石凝灰岩
	含泥岩礫凝灰岩
	安山岩熔岩
	主要斷層
	小斷層

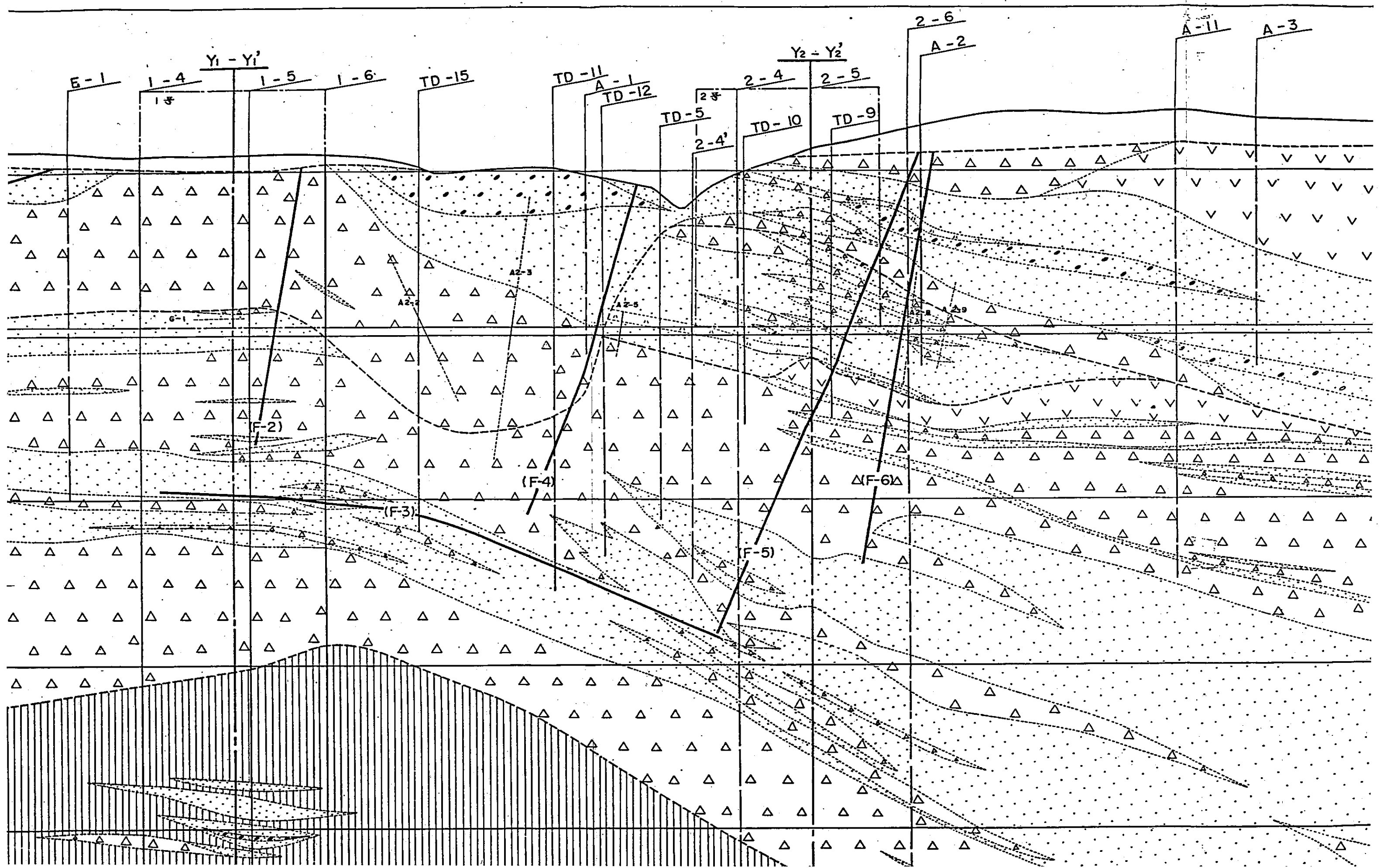


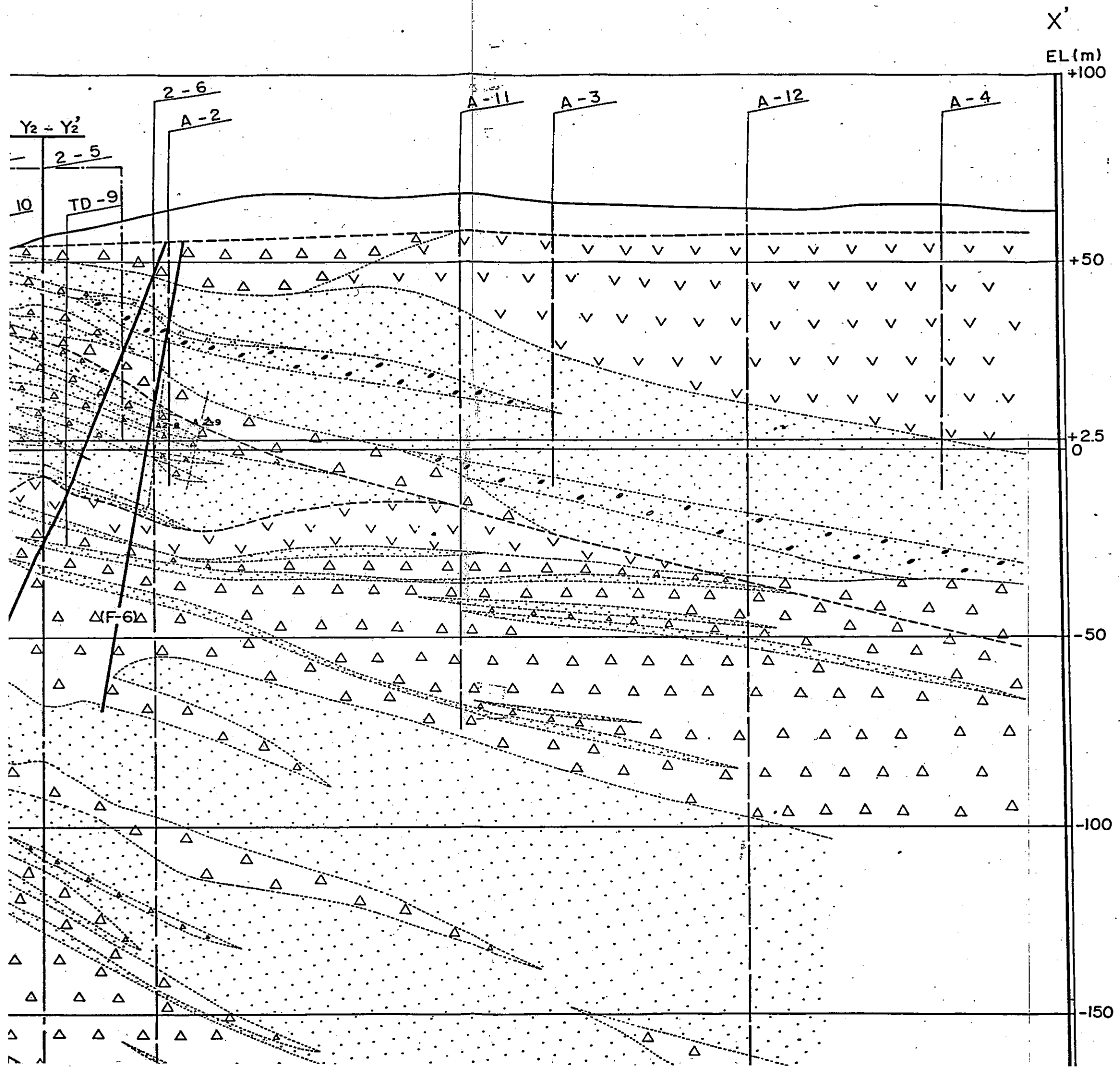
P48<sup>4</sup>/<sub>4</sub>

第3.5圖 斷層分布圖 (Y<sub>2</sub> - Y<sub>2</sub>)

X  
EL(m)



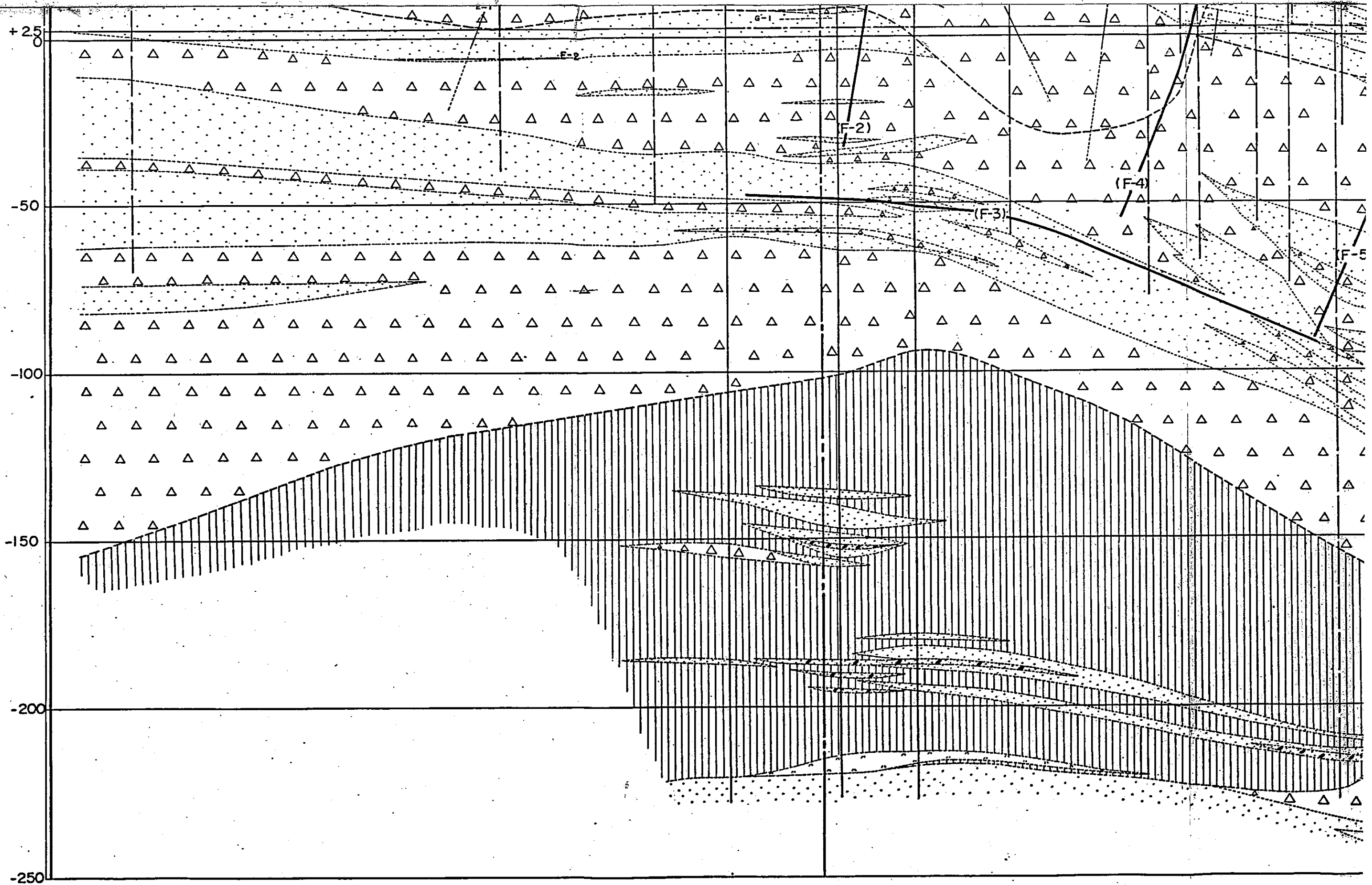


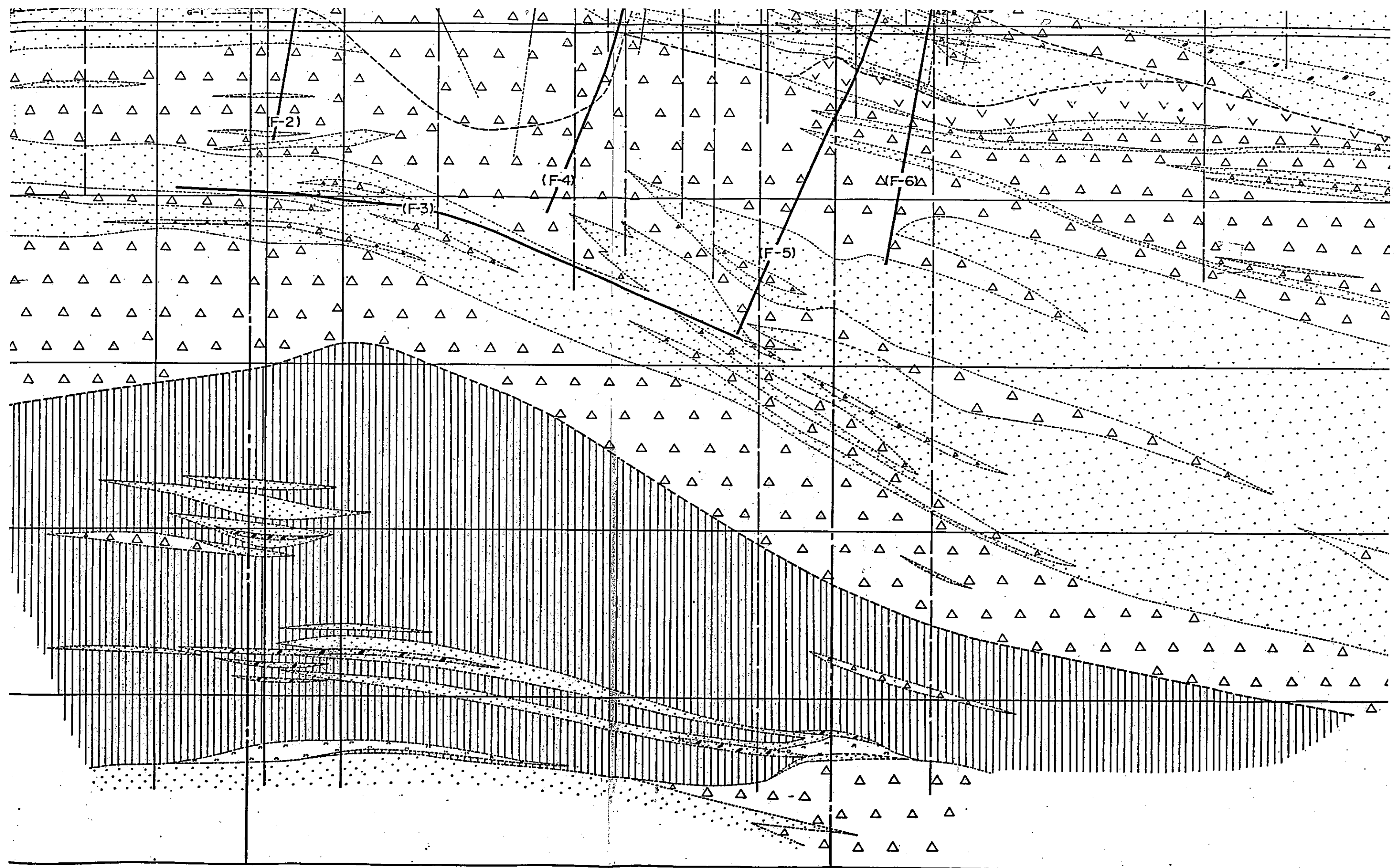


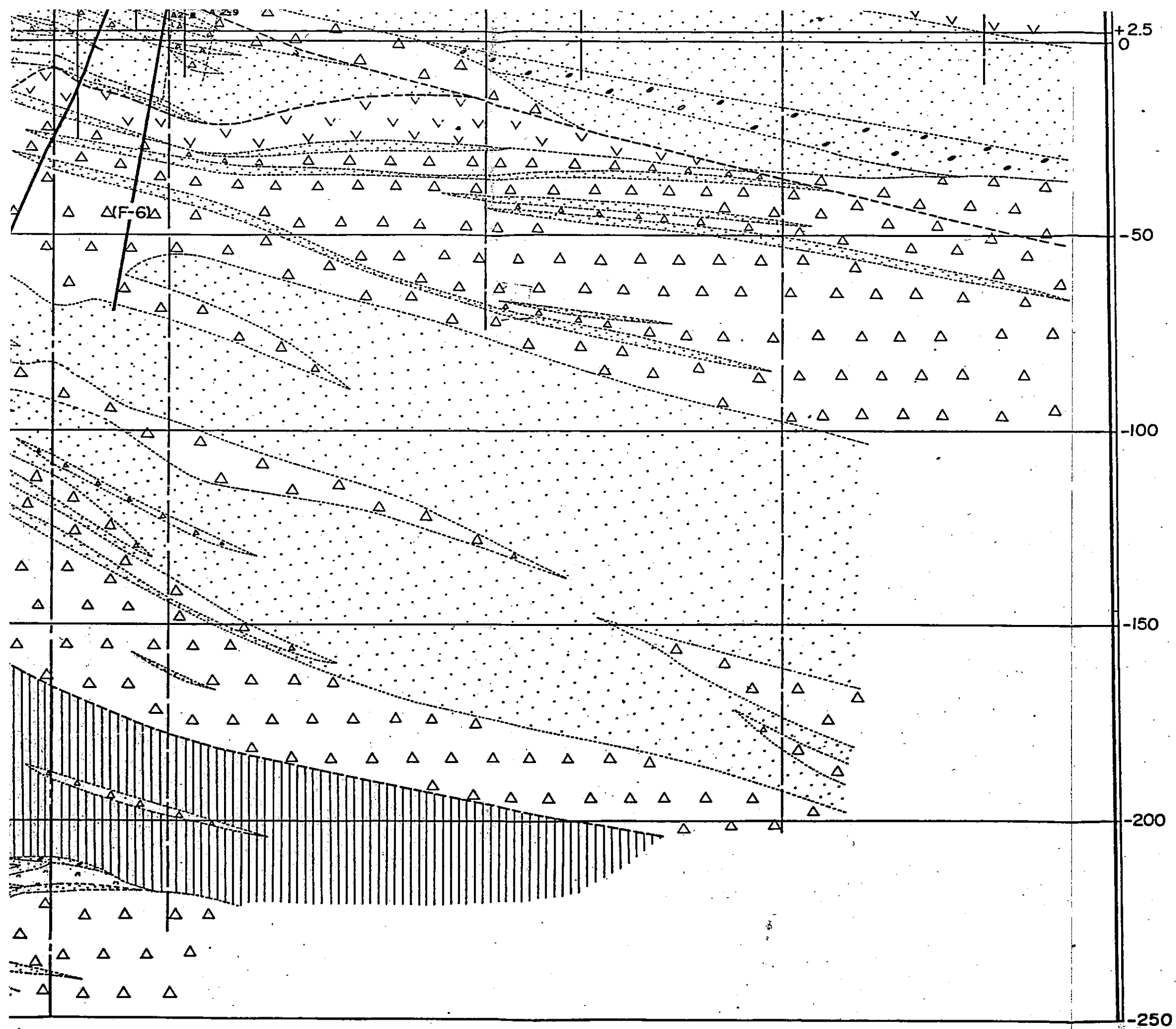
p49 3/6

凡例

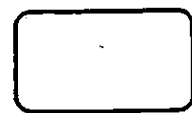
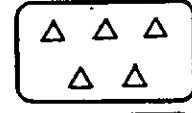
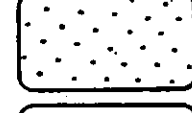
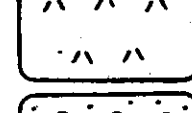
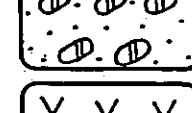
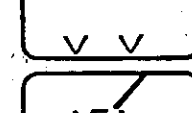
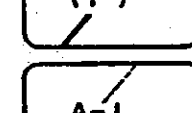
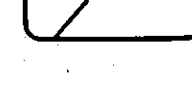
- |  |         |
|--|---------|
|  | 礫·砂·粘土  |
|  | 凝灰角礫岩   |
|  | 凝灰岩     |
|  | 輕石凝灰岩   |
|  | 含泥岩礫凝灰岩 |
|  | 安山岩熔岩   |



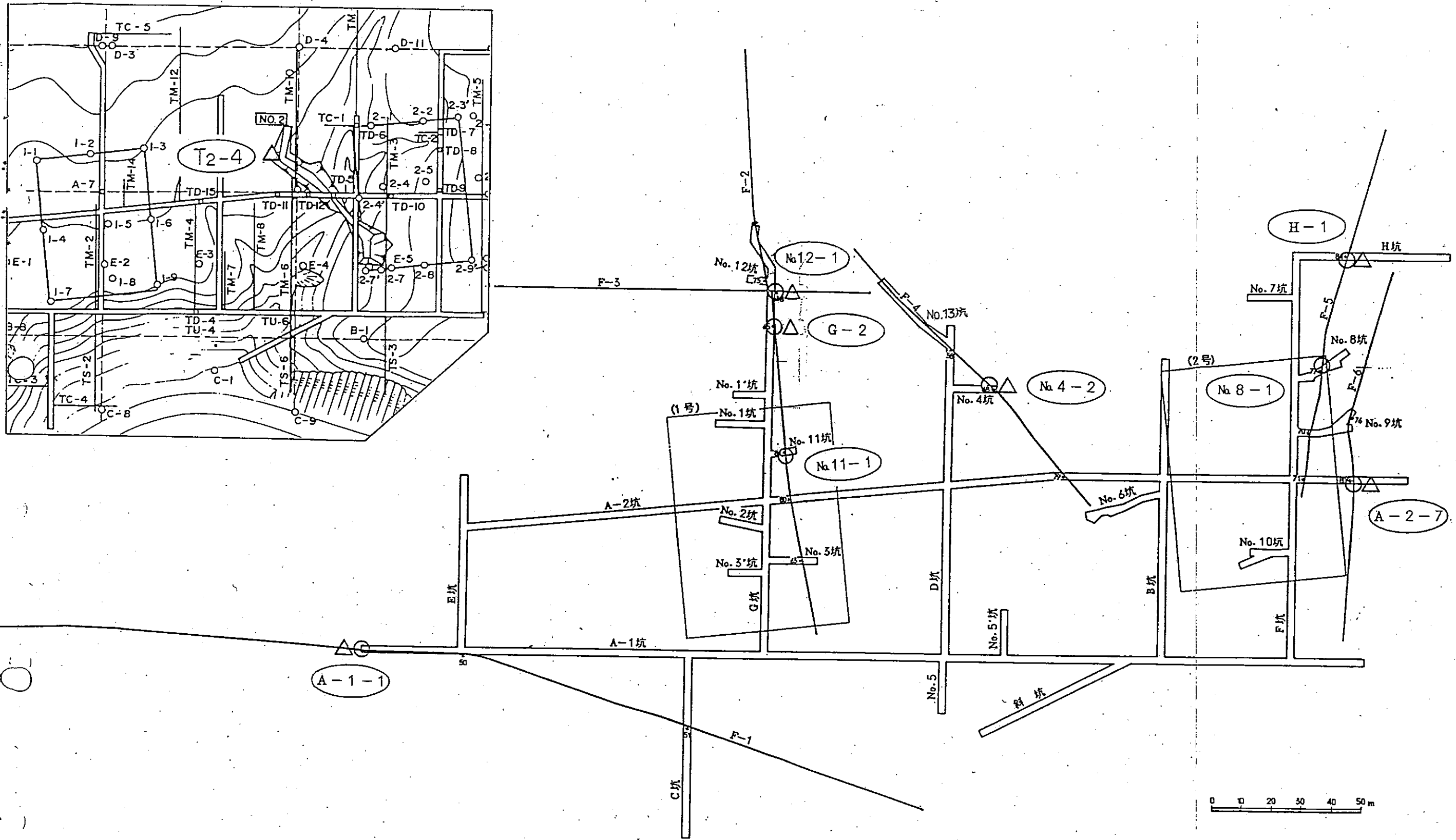




凡例

-  礫・砂・粘土
-  凝灰角礫岩
-  凝灰岩
-  輕石凝灰岩
-  含泥岩礫凝灰岩
-  安山岩熔岩
-  主要斷層
-  小斷層

第3.6圖 斷層分布圖(X - X')

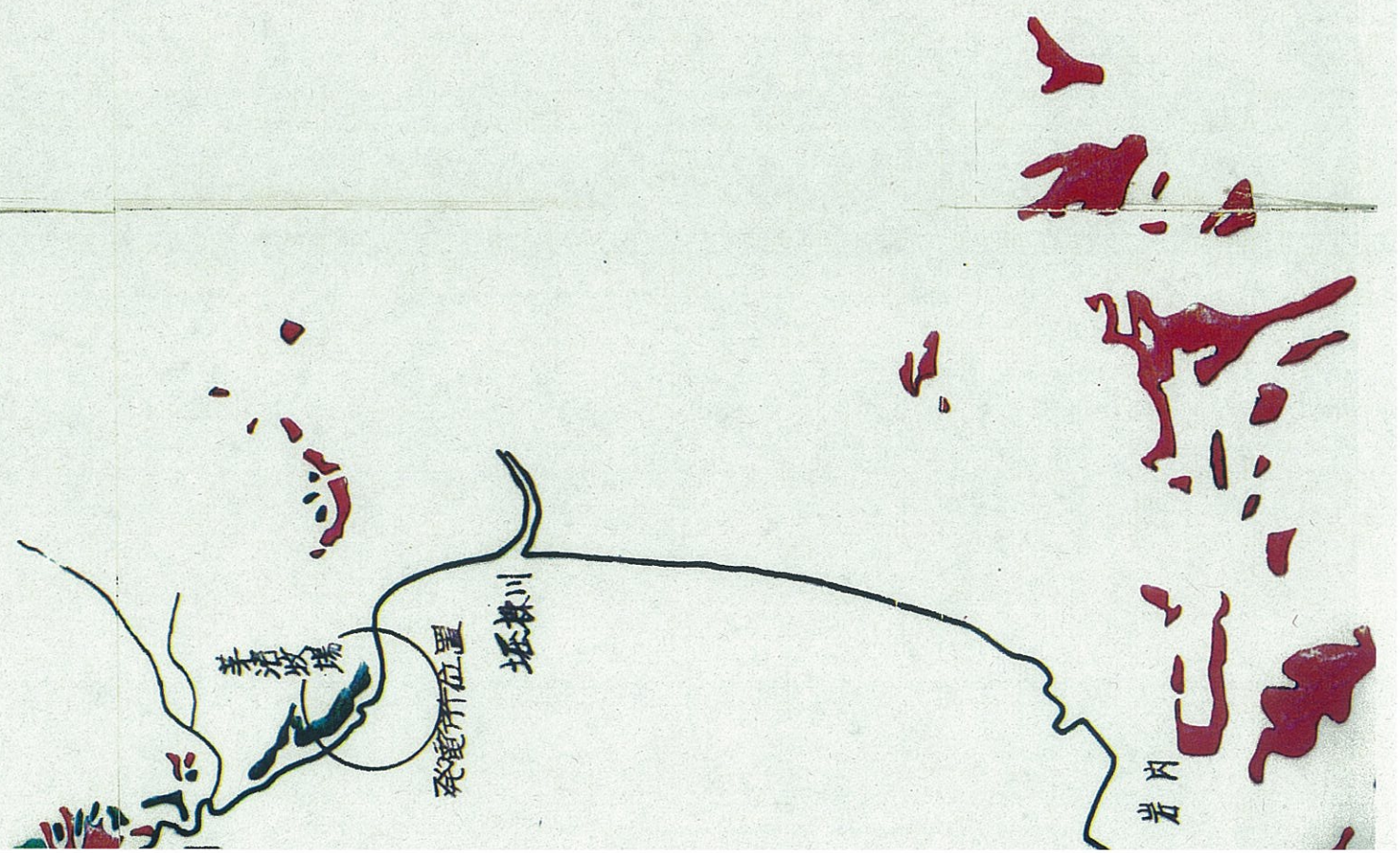


凡例

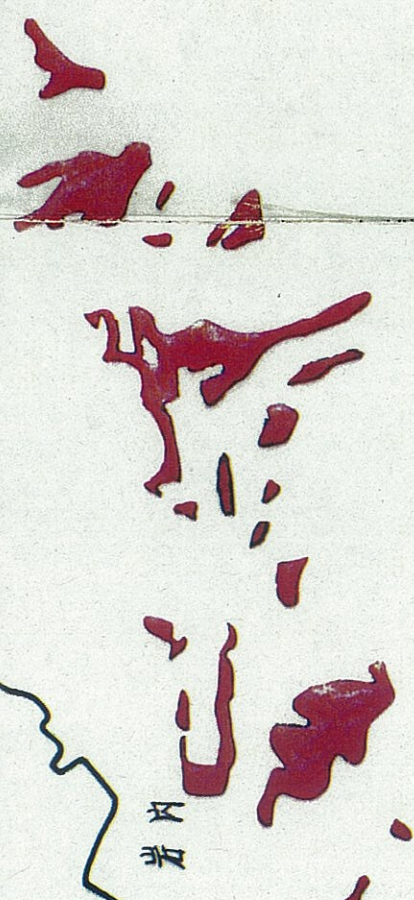
- : X線分析試料採取位置
- △ : 石英粒子の表面構造観察試料採取位置

第 3.7 図 断層内物質解析試料採取位置図

851 1/9



p51 <sup>2</sup>/<sub>9</sub>



岩内

p 51 <sup>3</sup>/<sub>9</sub>



神恵内

照岸

茶津川

茅渚波揚

碓氷所位置

碓氷川

岩内



51 5/9

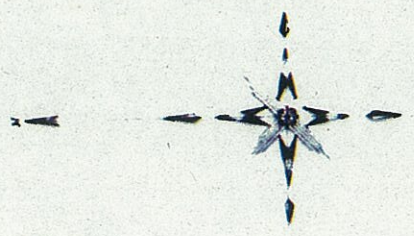
例  
商位投丘  
中位投丘

p51 6/9

1000 0 1000 2000 3000  
1 : 50,000



大森川

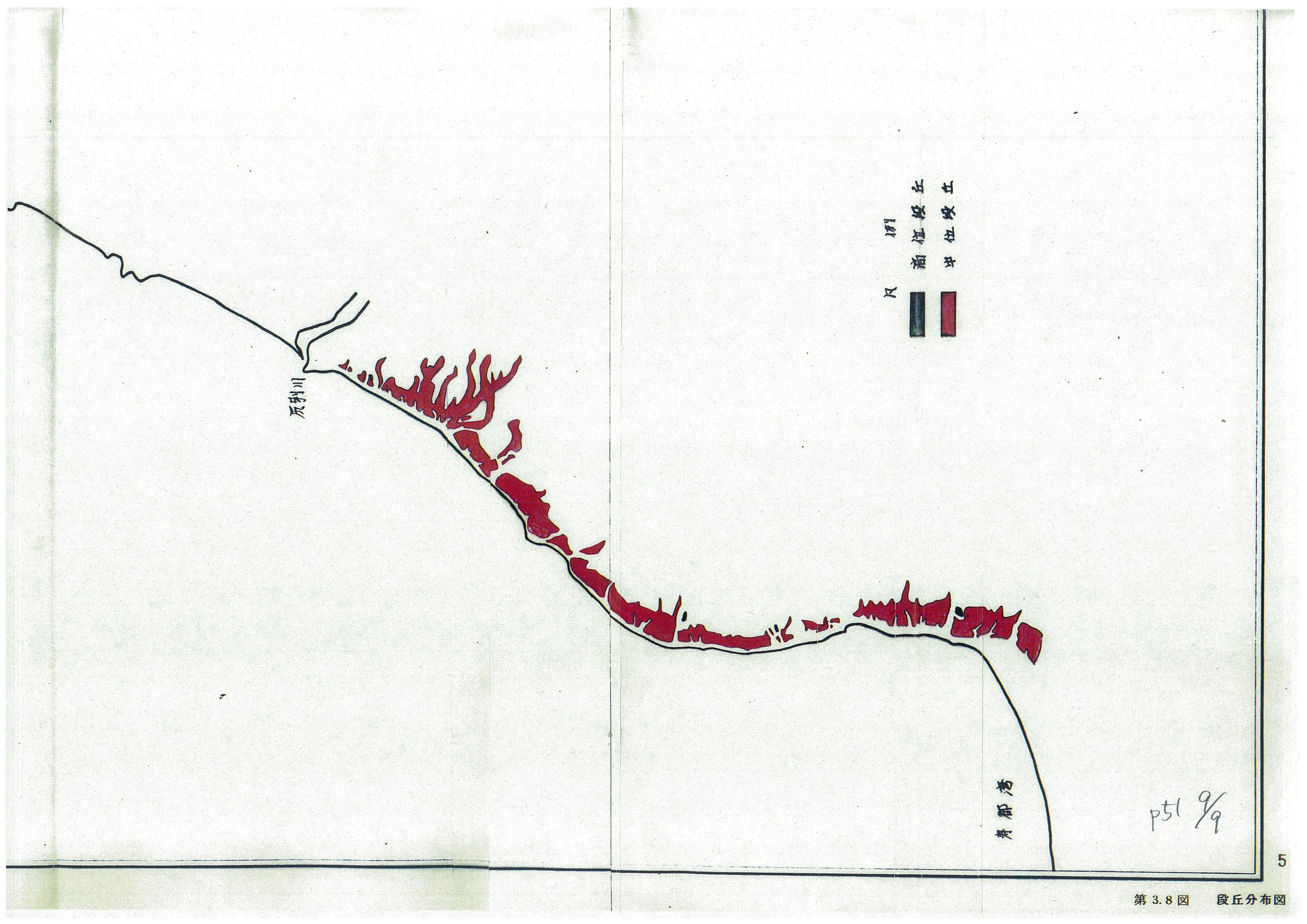


P51 7/9



死判川

p51 8/9

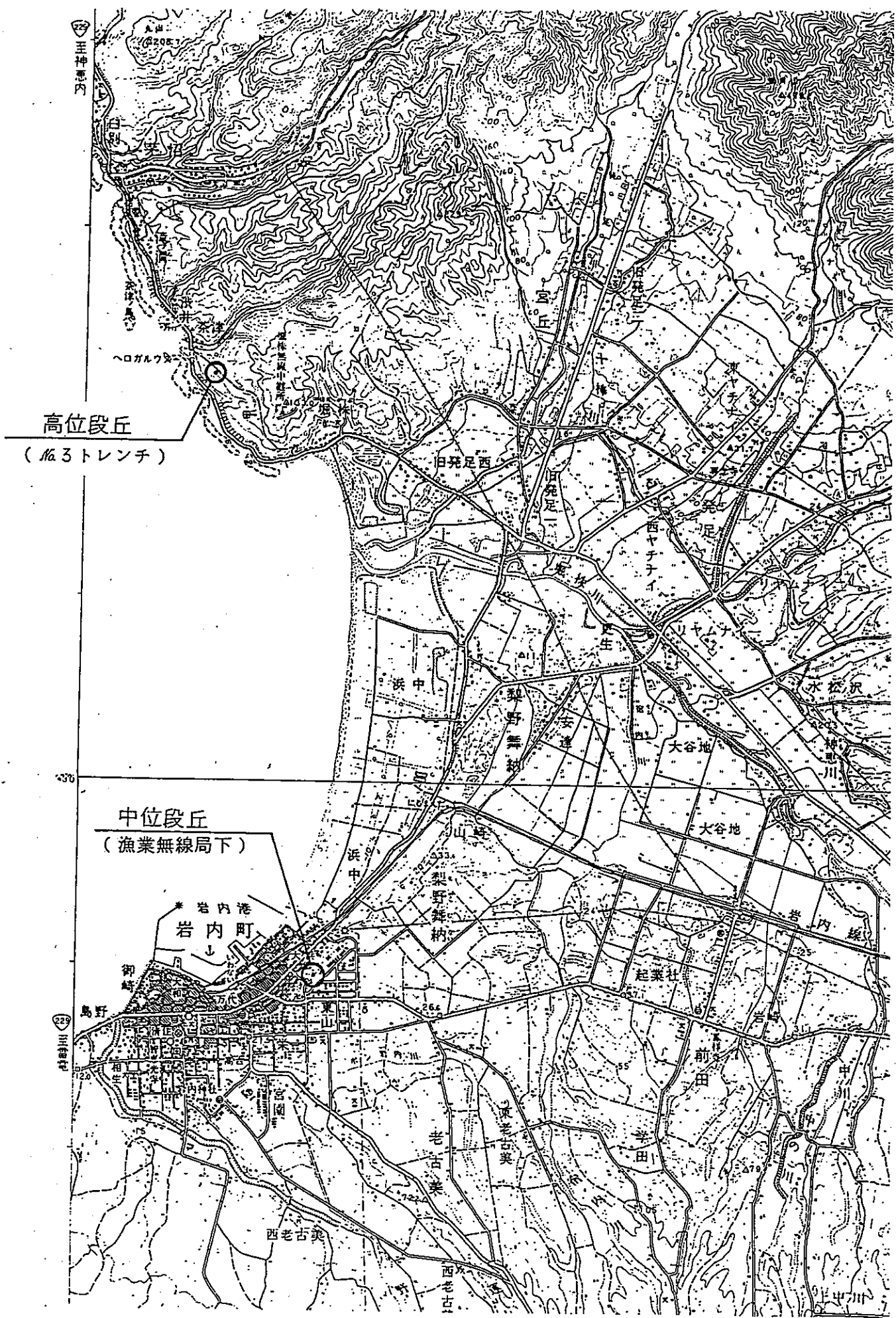


瓦剌川

尺 例  
 高丘 中丘

青都湾

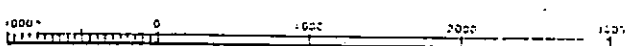
p51 9/9



高位段丘  
(高3トレンチ)

中位段丘  
(漁業無線局下)

1:50,000



第 3.9 図 地層年代測定試料採取位置図