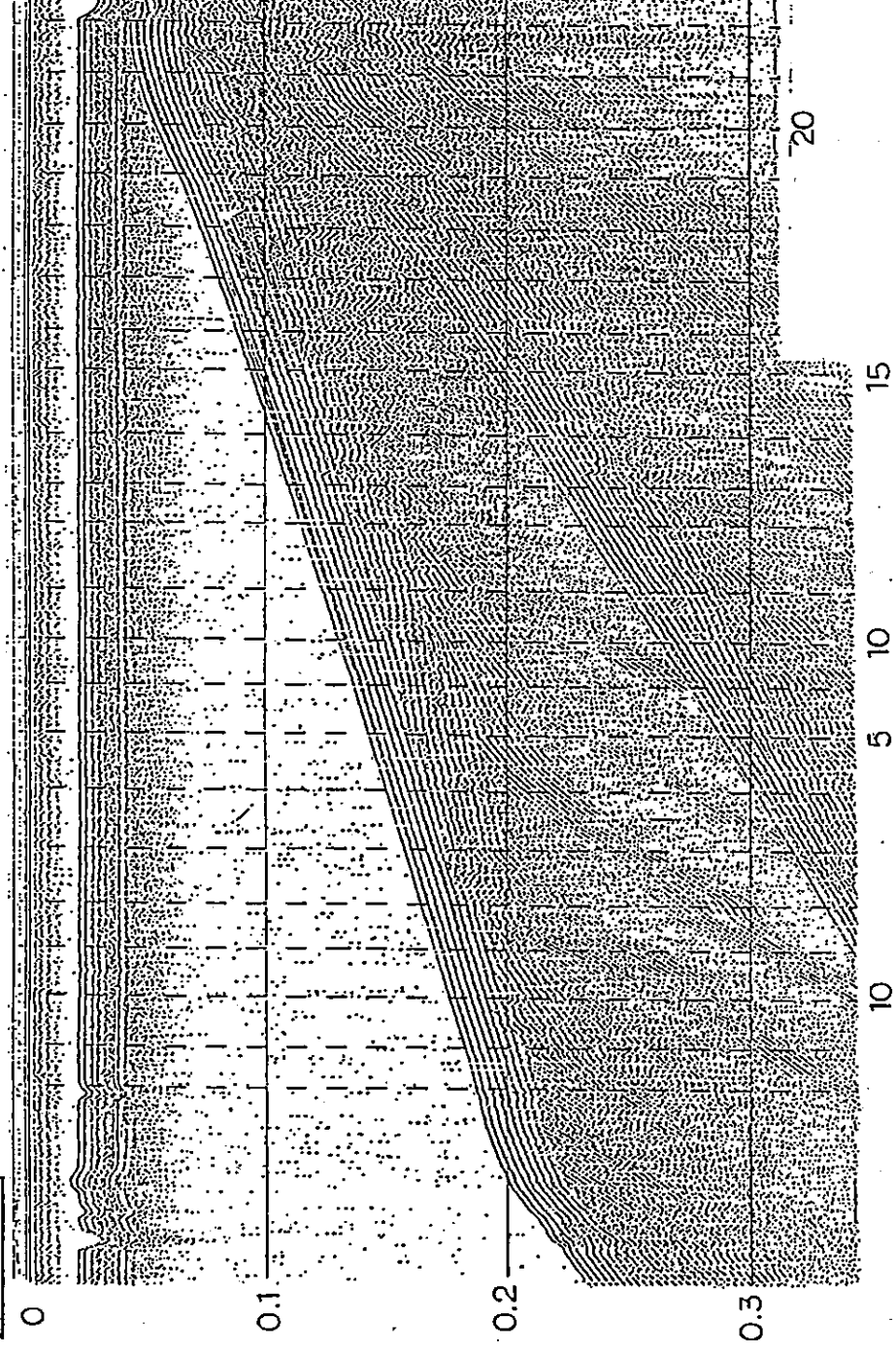


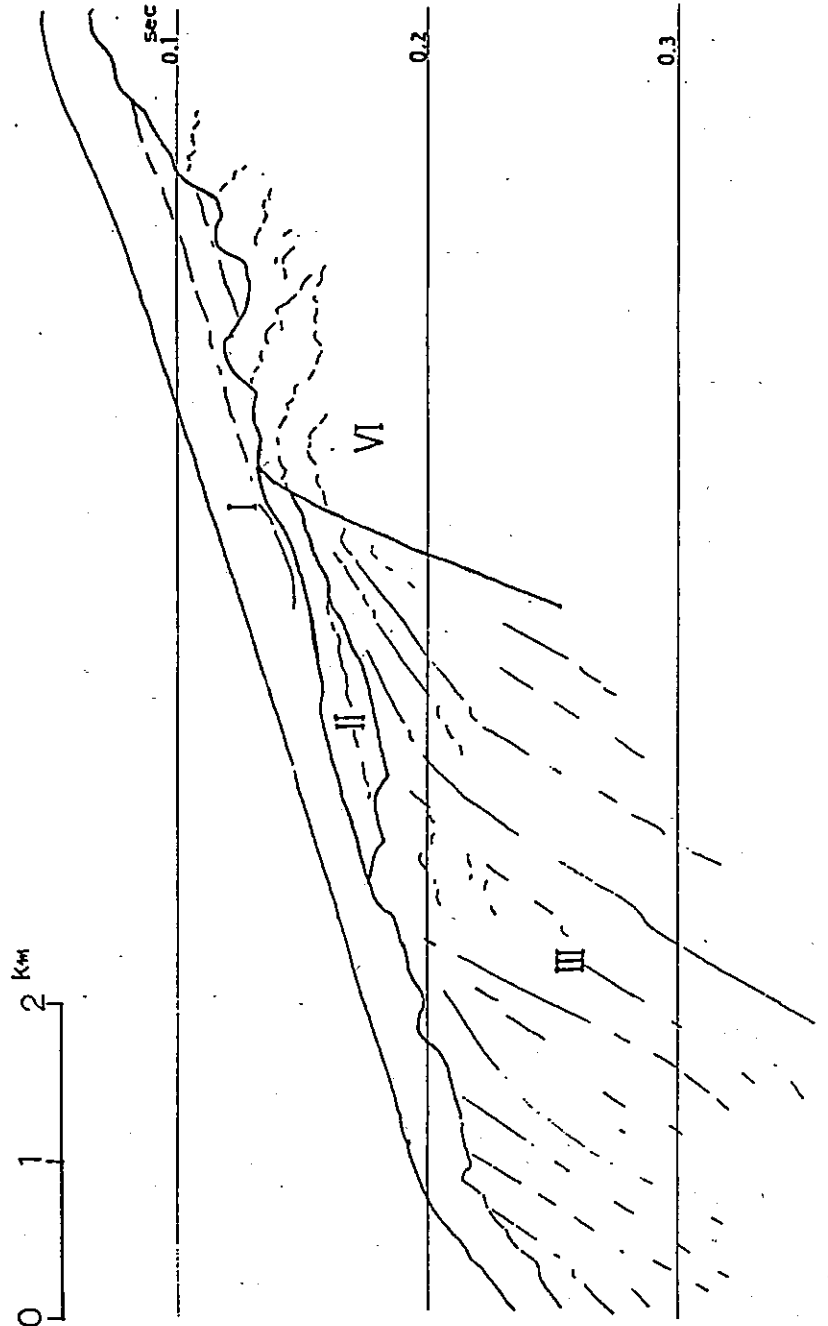
F-c, 測線10

文献活撓曲

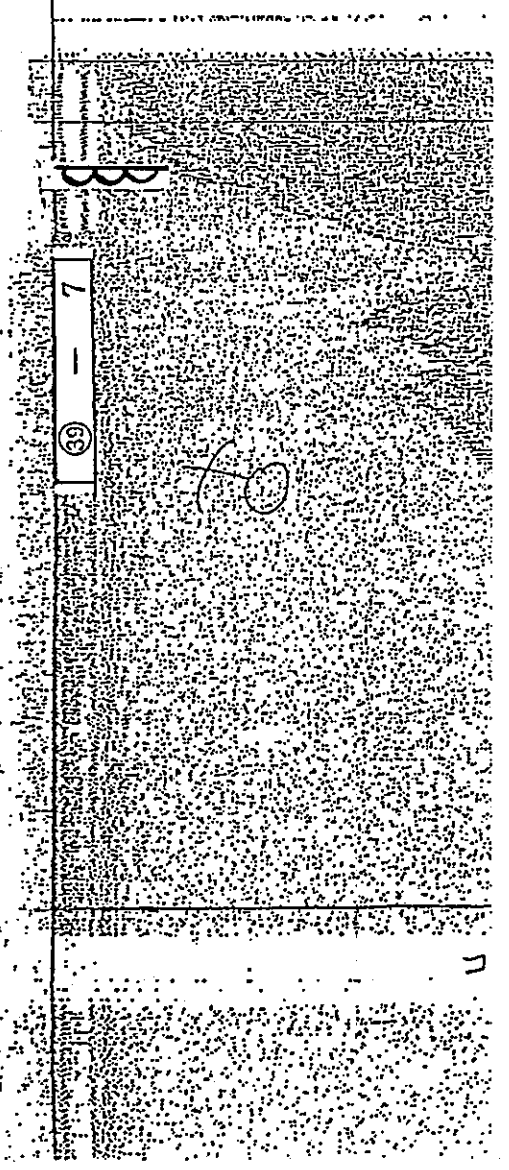
測線 C



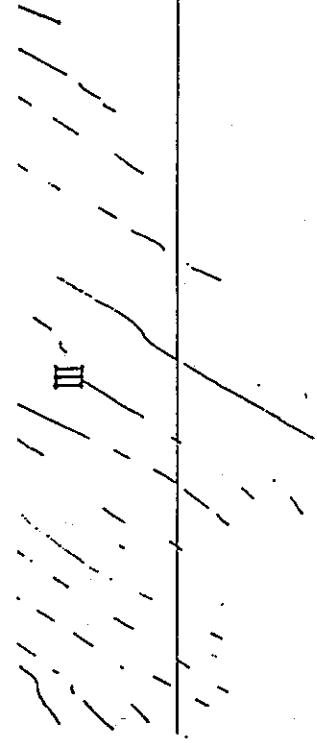
0 1 2 Km



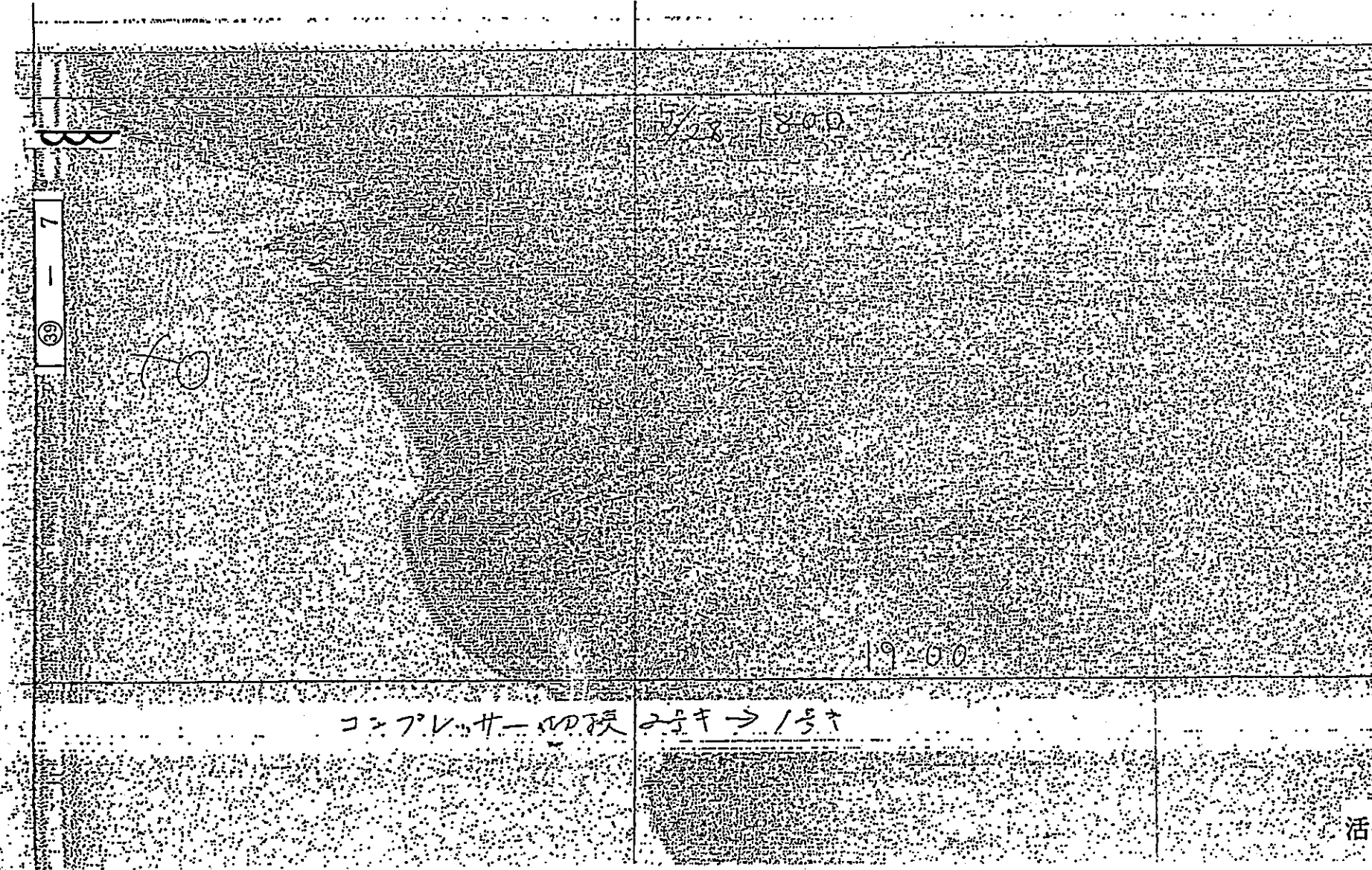
活断層研究会
(海上保安庁)



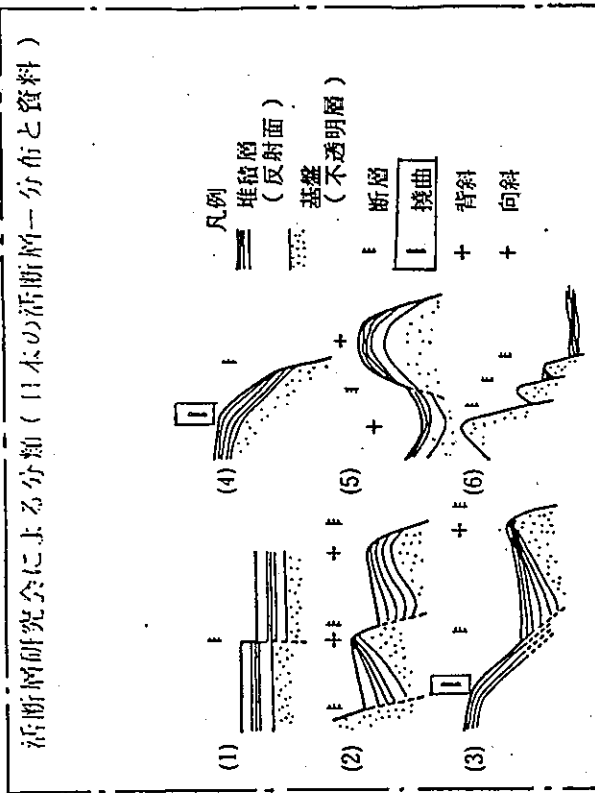
PB 1/2



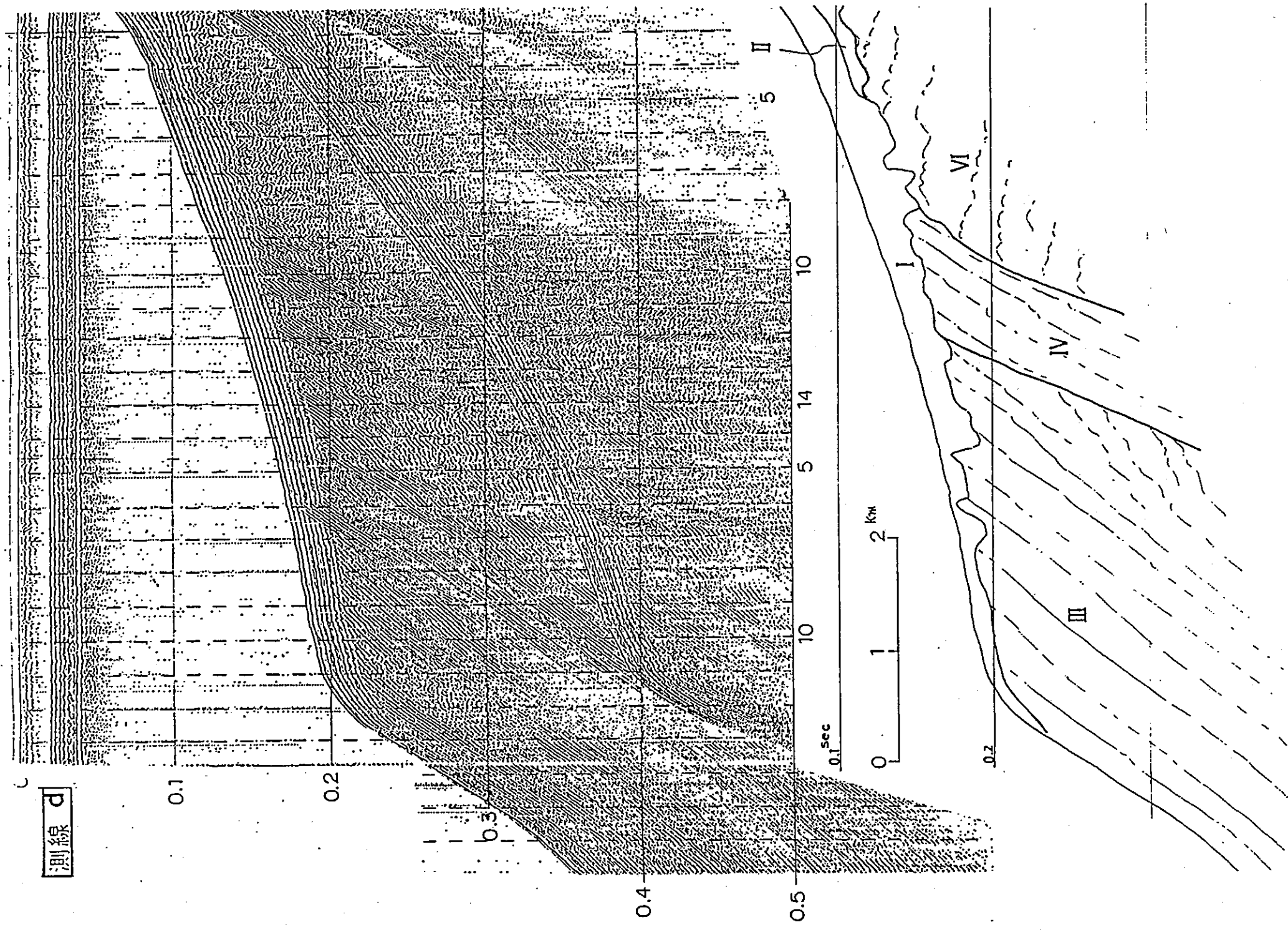
活断層研究会
(海上保安庁)



(参考)

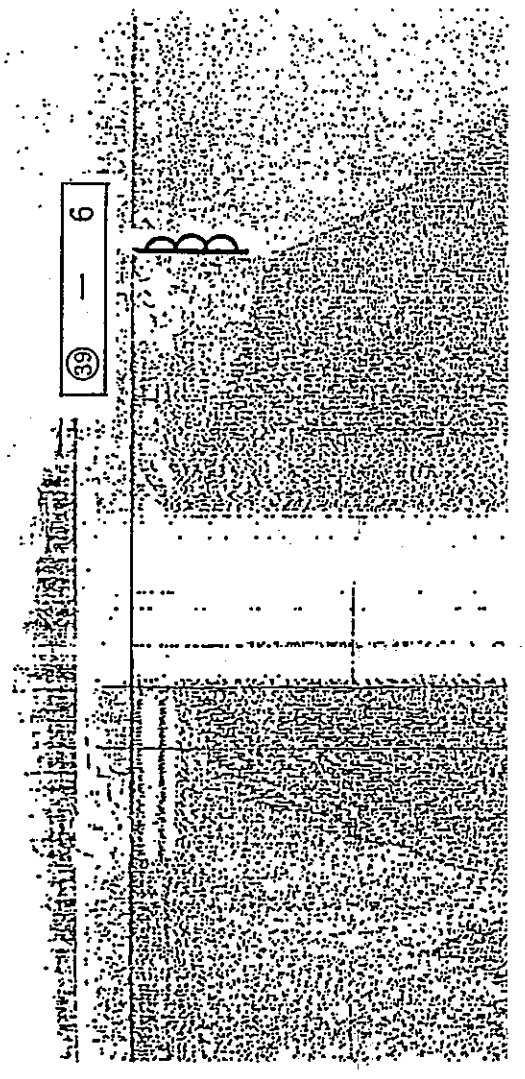


活撓曲, 測線 c

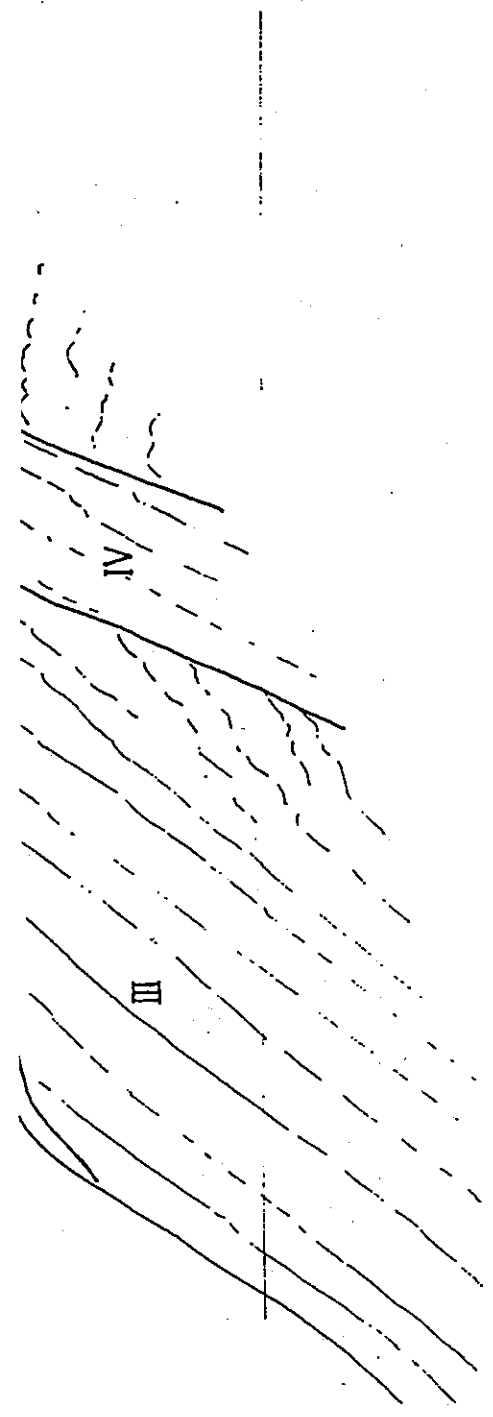


PTA 1/2

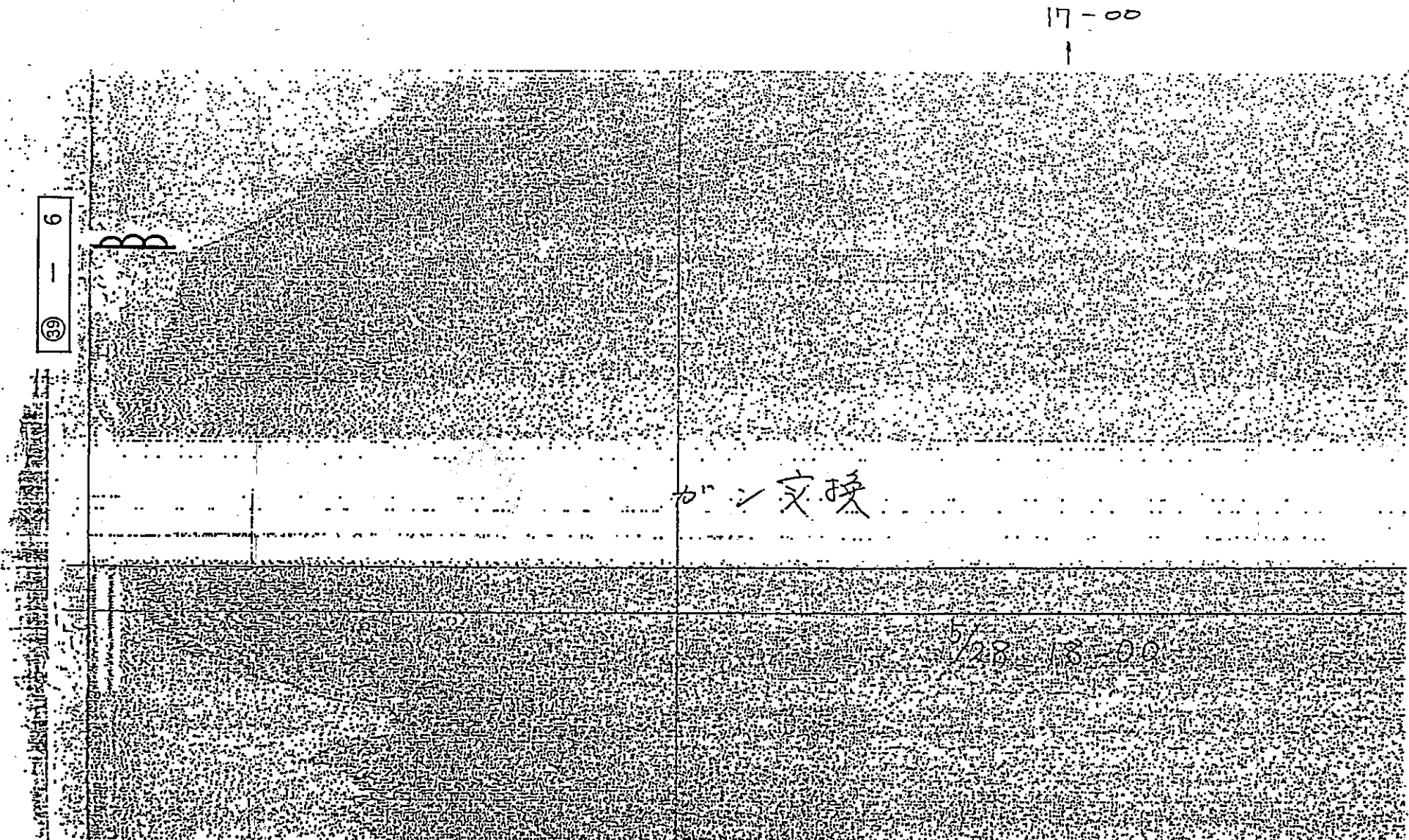
活断層研究会
(海上保安庁)



59 - 6

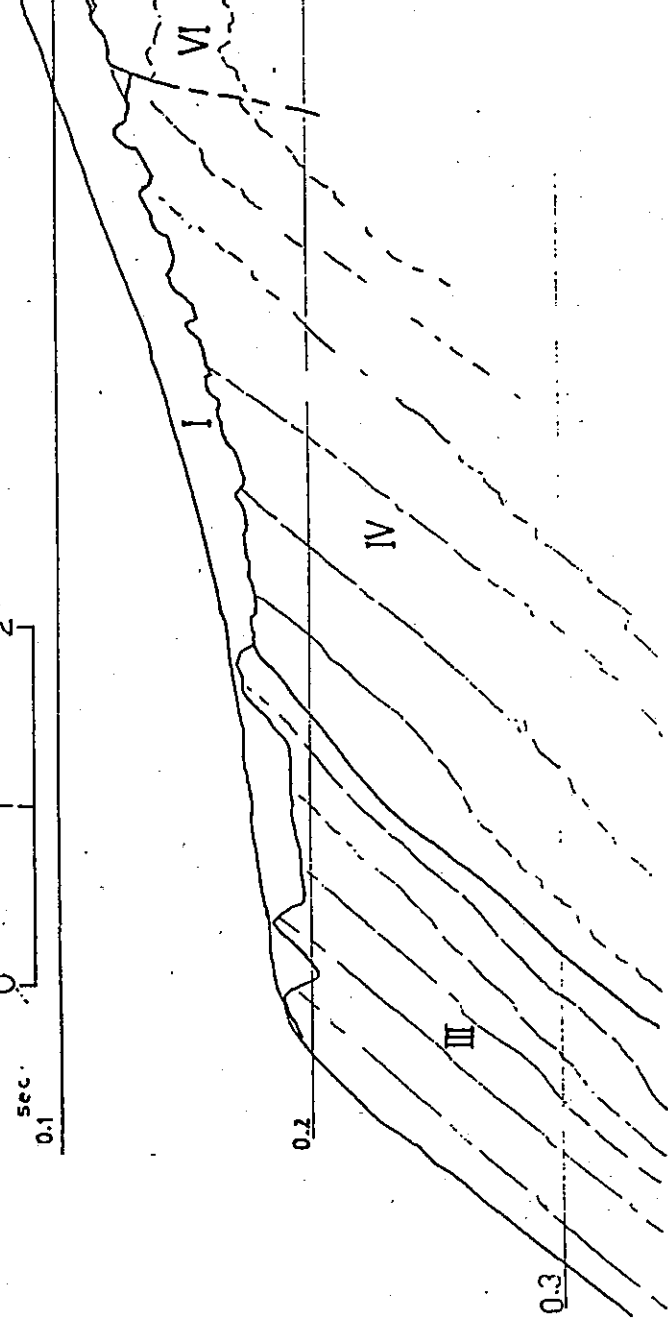
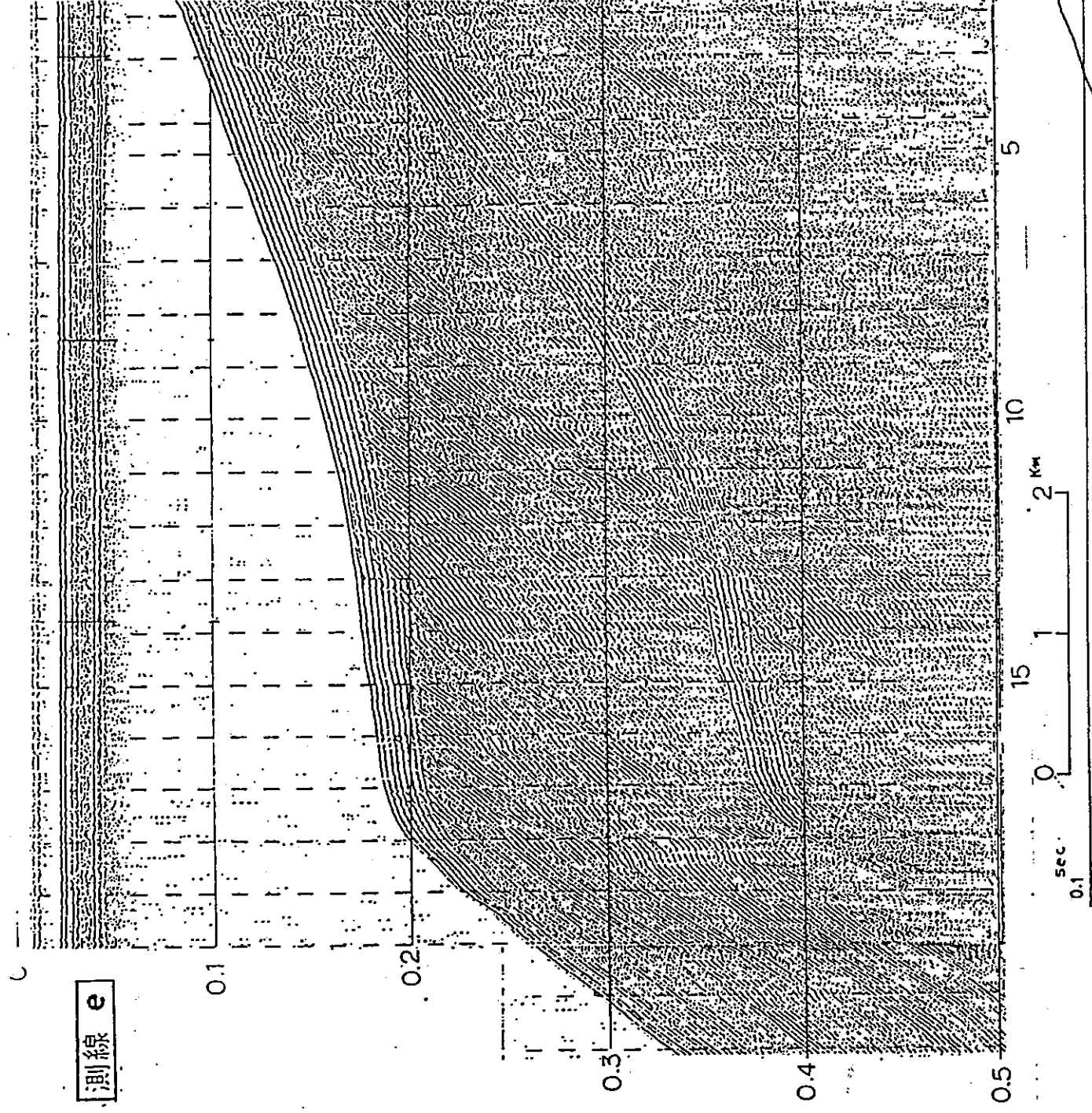


活断層研究会
(海上保安庁)



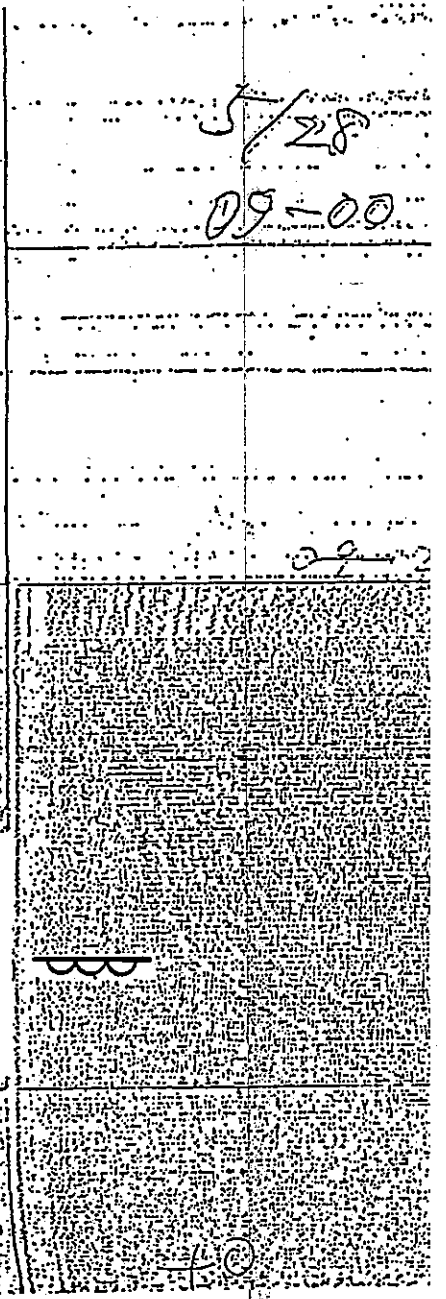
活撓曲 , 測線 d

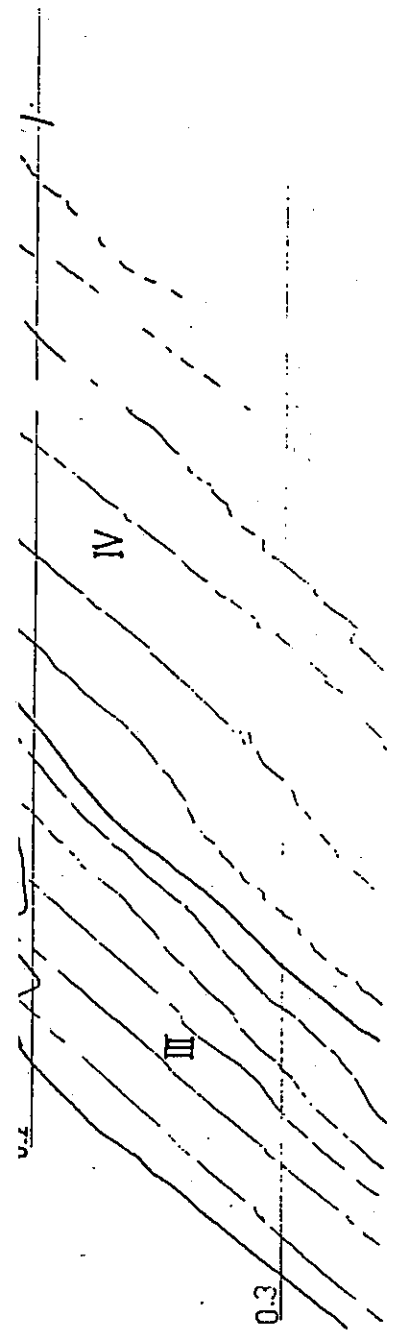
2/2



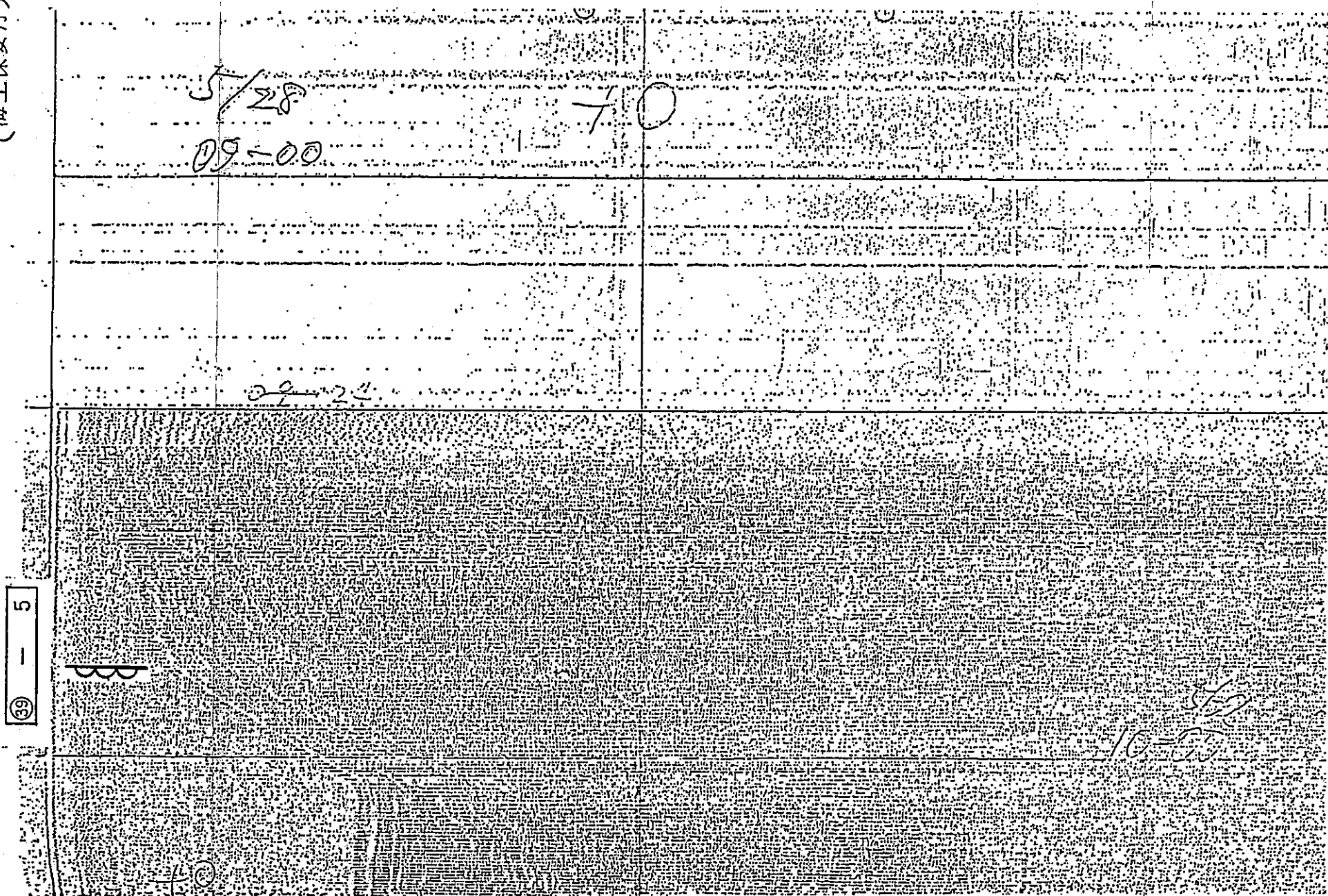
活断層研究会
(海上保安庁)

39 - 5



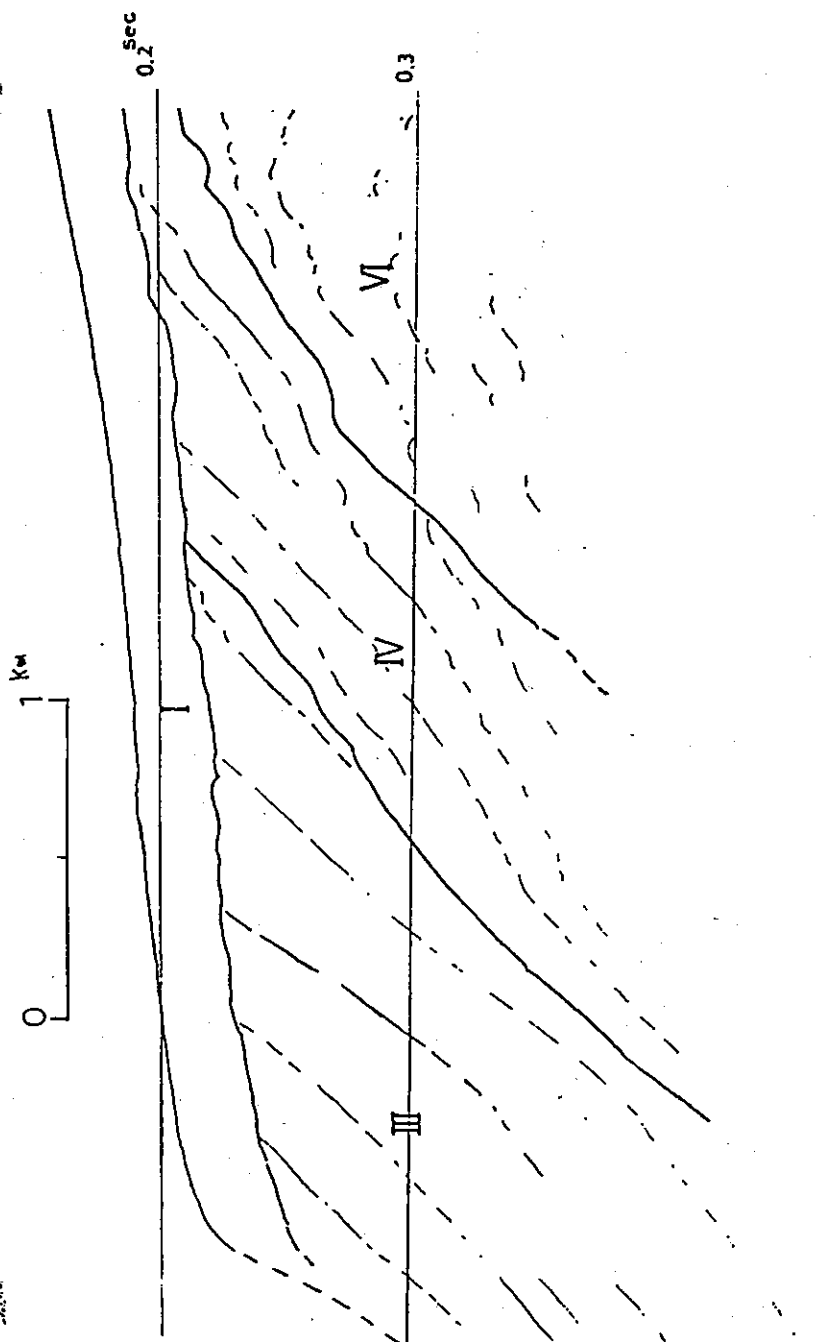
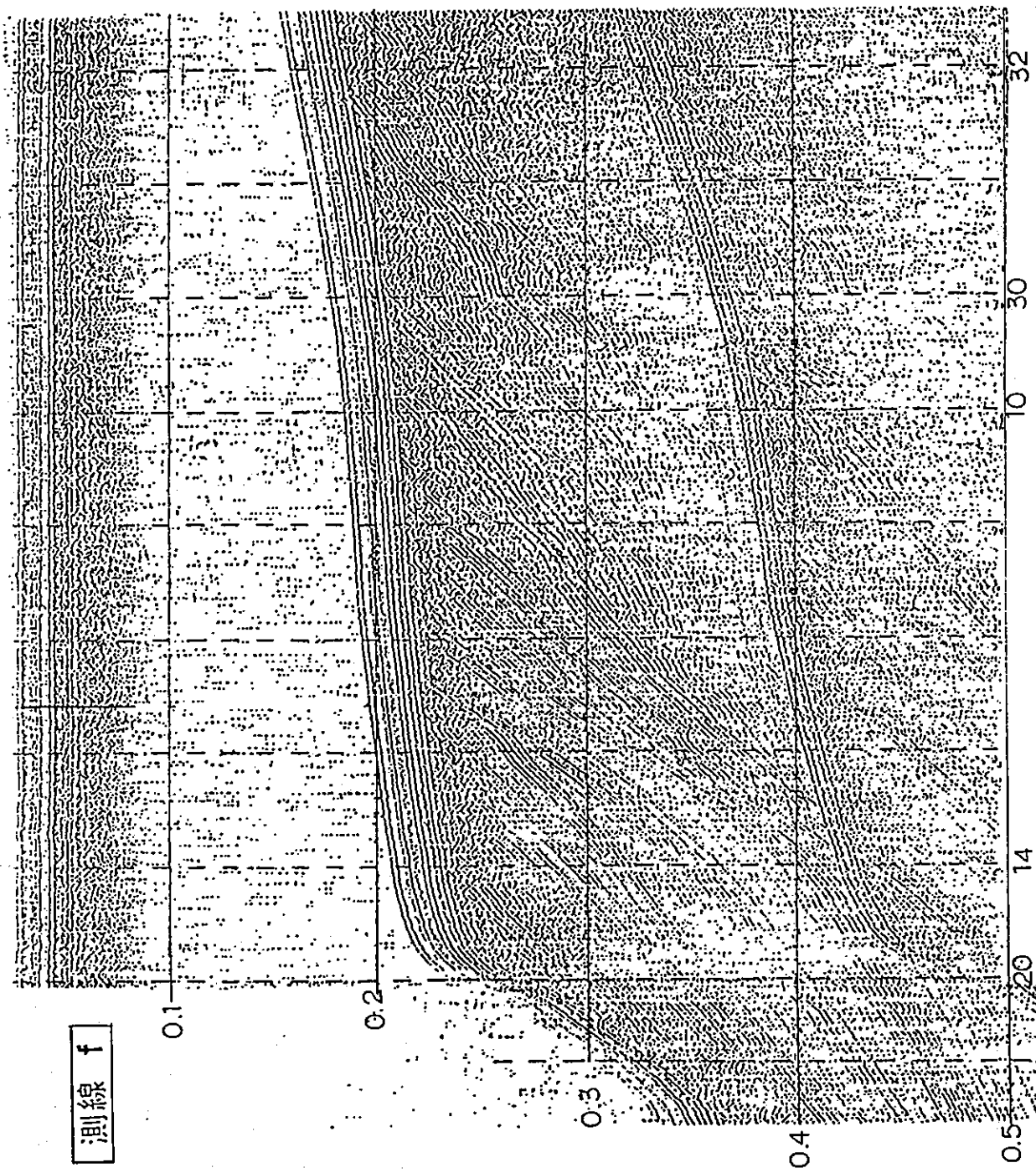


活断層研究会
(海上保安庁)

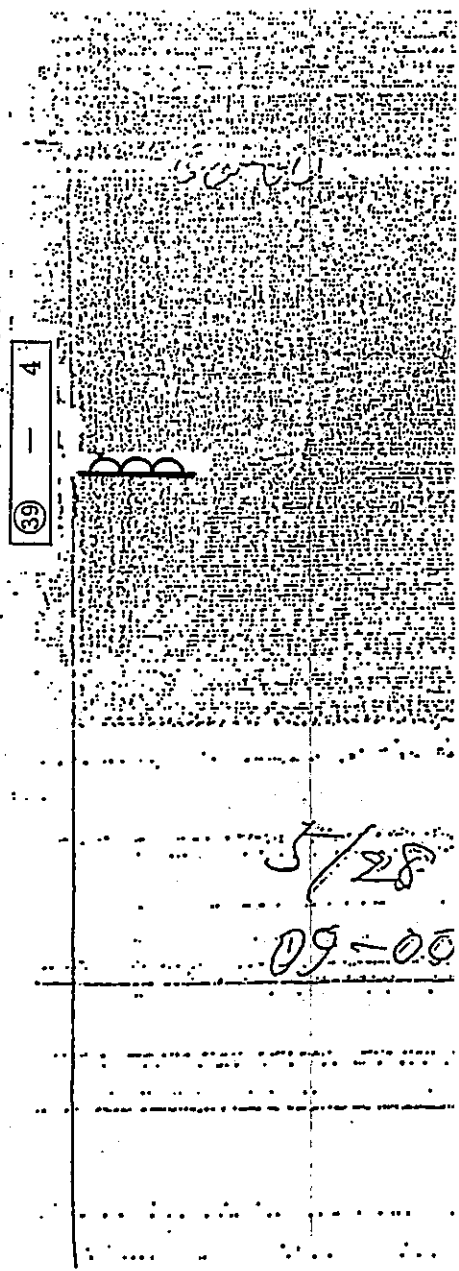


活撓曲 測線 e

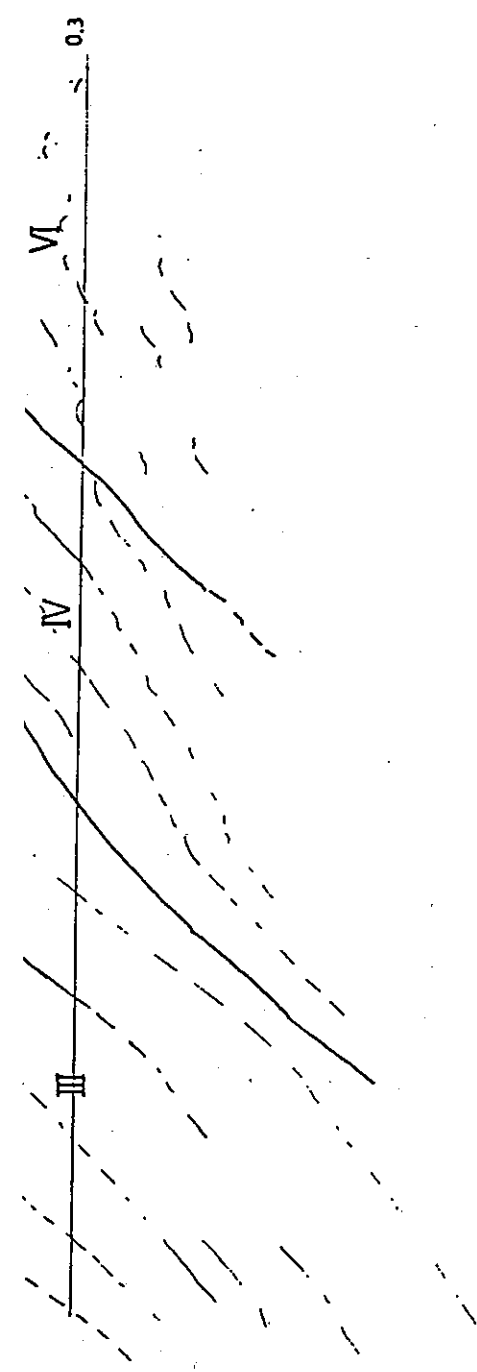
2/2



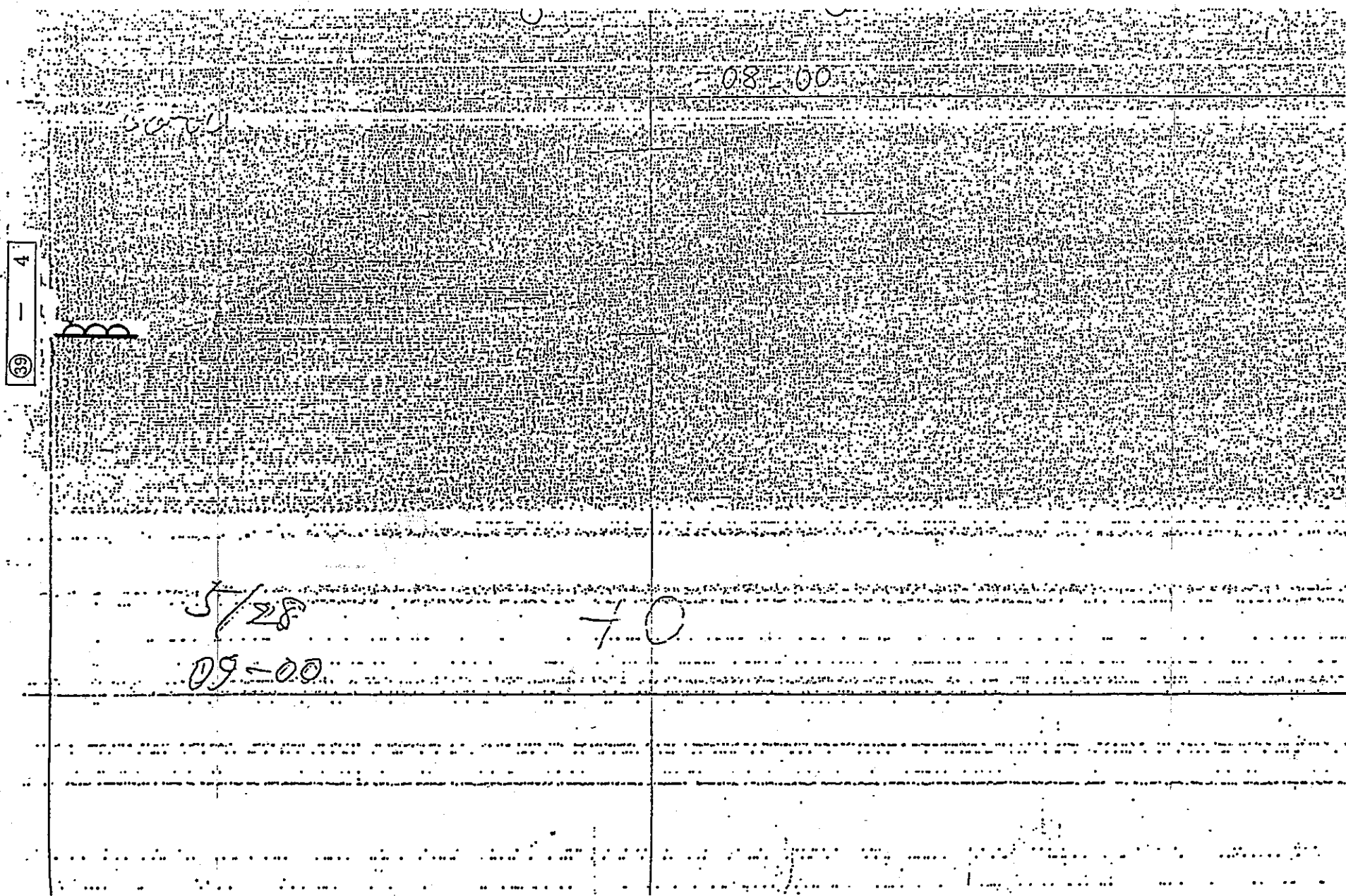
活断層研究会
(海上保安庁)



p16 1/2

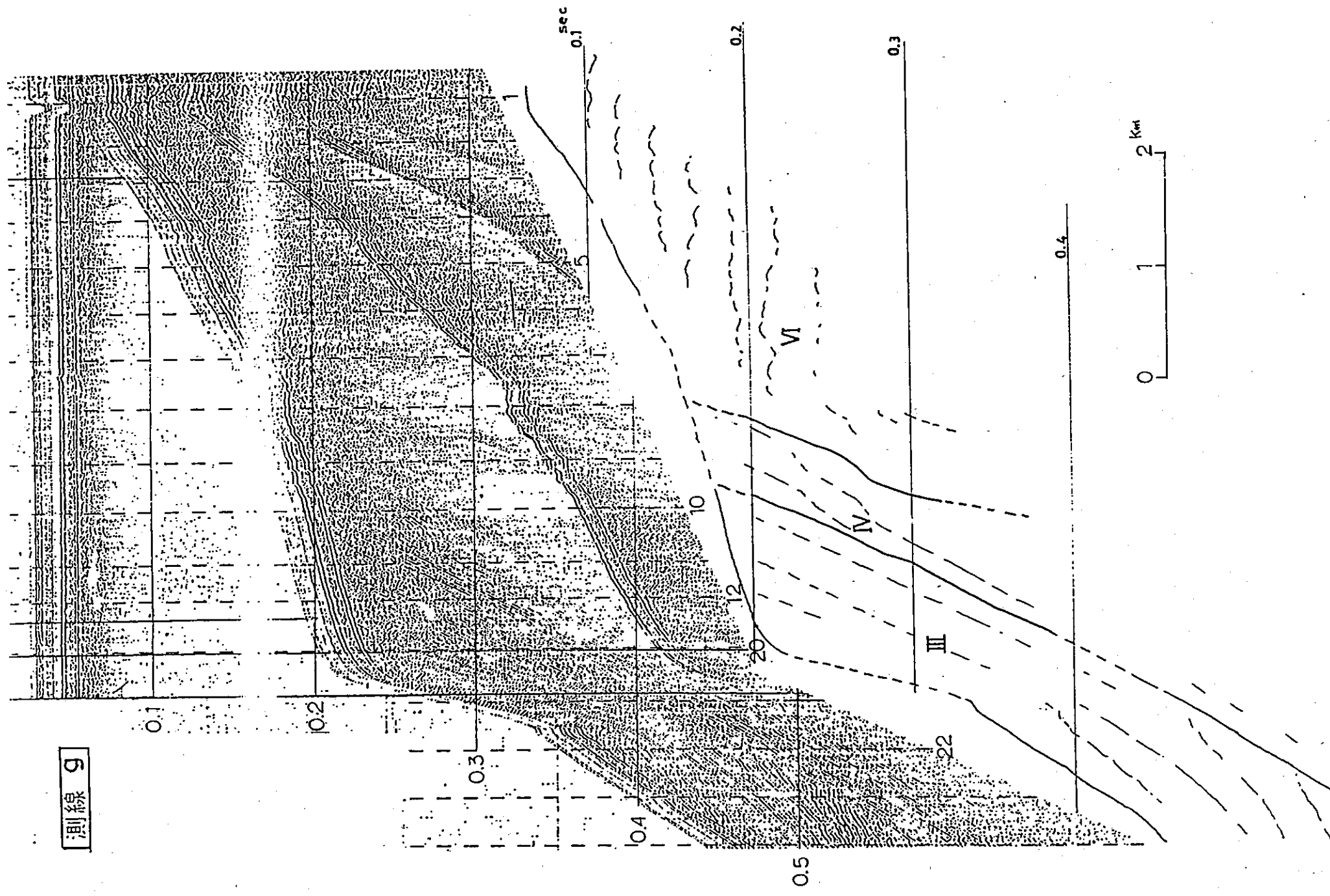


活断層研究会
(海上保安庁)

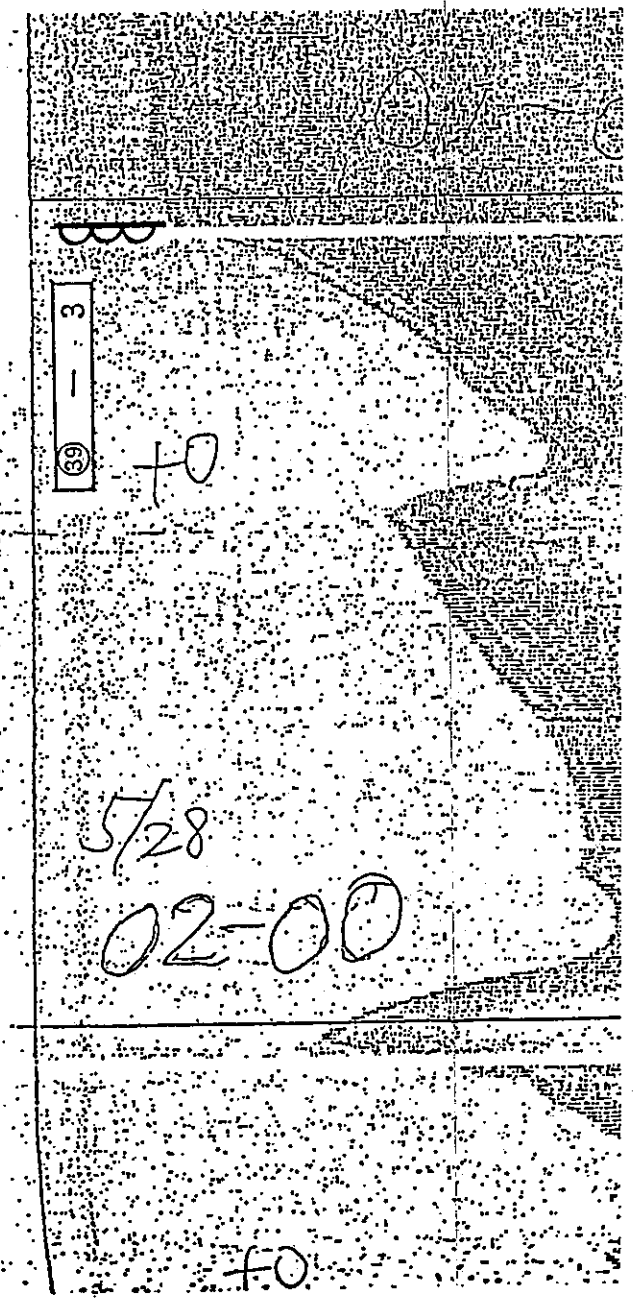


活撓曲，測線 f

2/2



活断層研究会
(海上保安庁)



p17 1/2

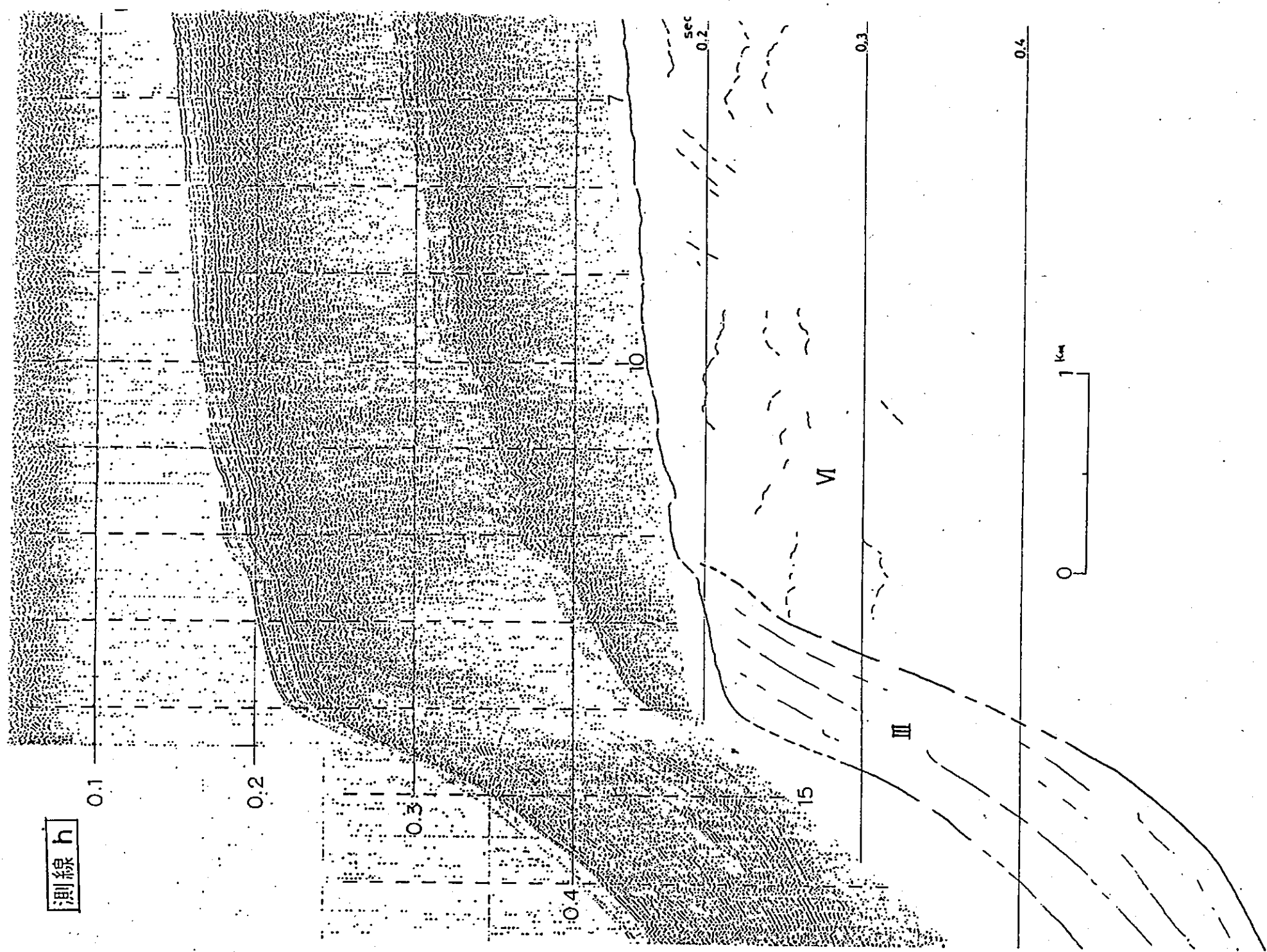
0 1 2 Km

活断層研究会
(海上保安庁)



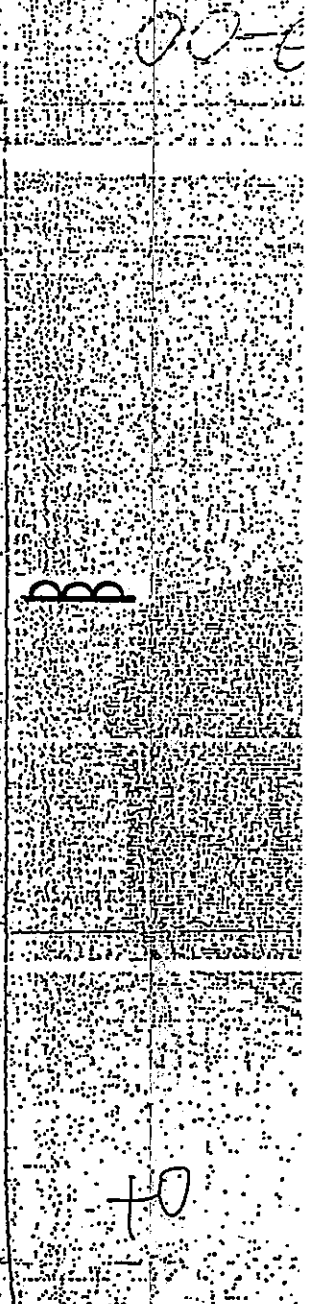
活撓曲，測線 g

2/2



活断層研究会
(海上保安庁)

39 - 2



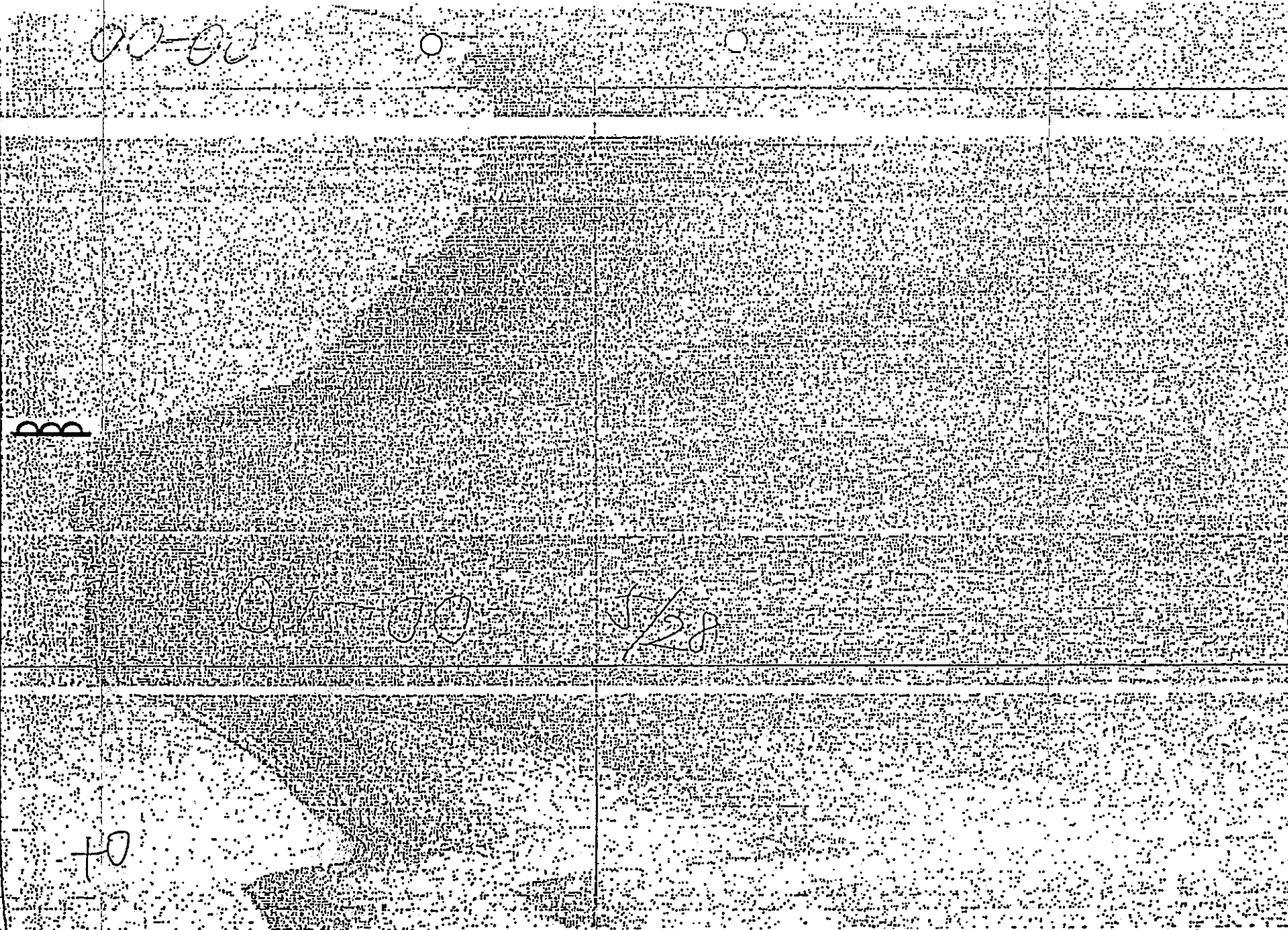
p18 1/2

0.4



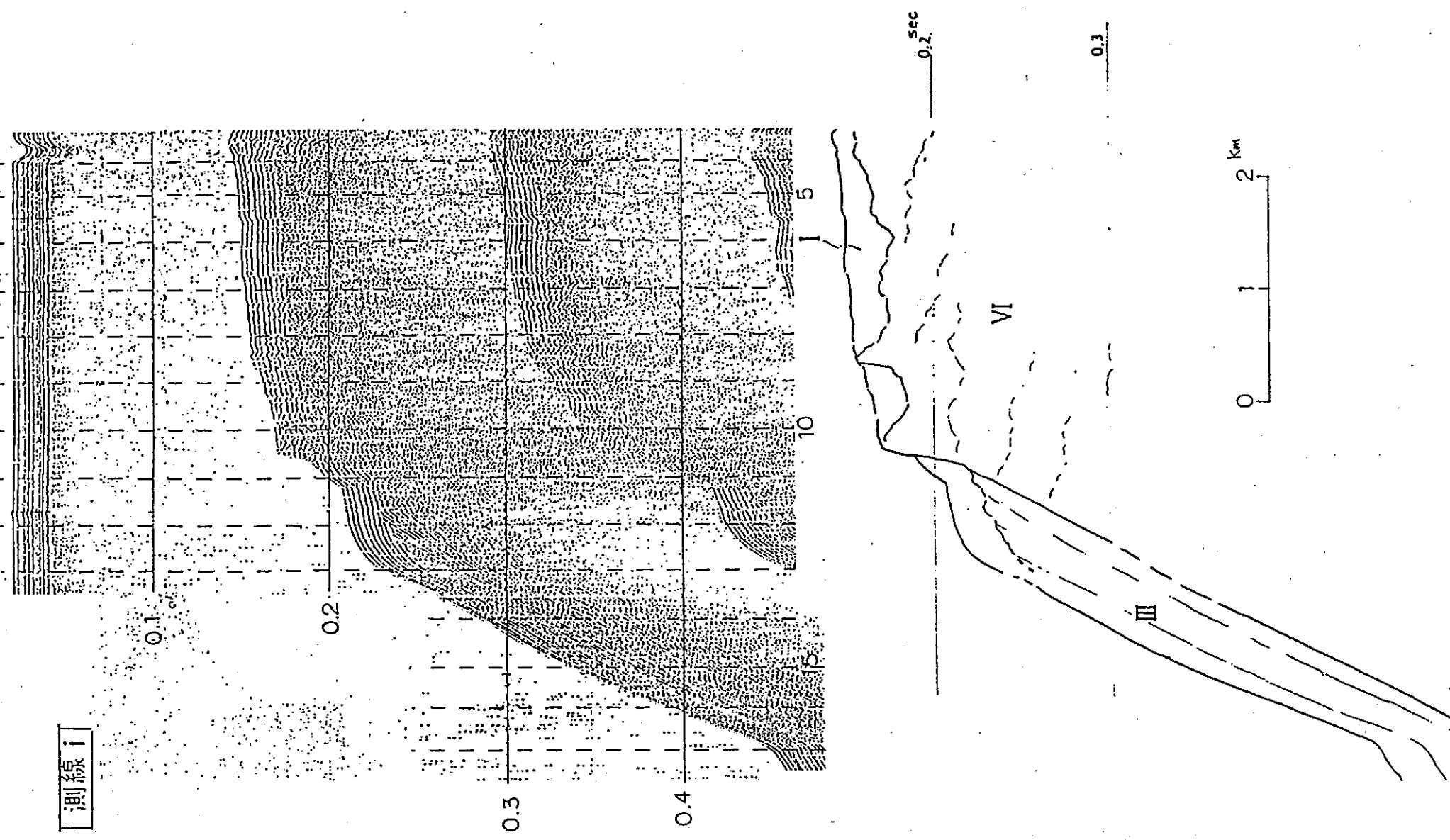
活断層研究会
(海上保安庁)

③ - 2

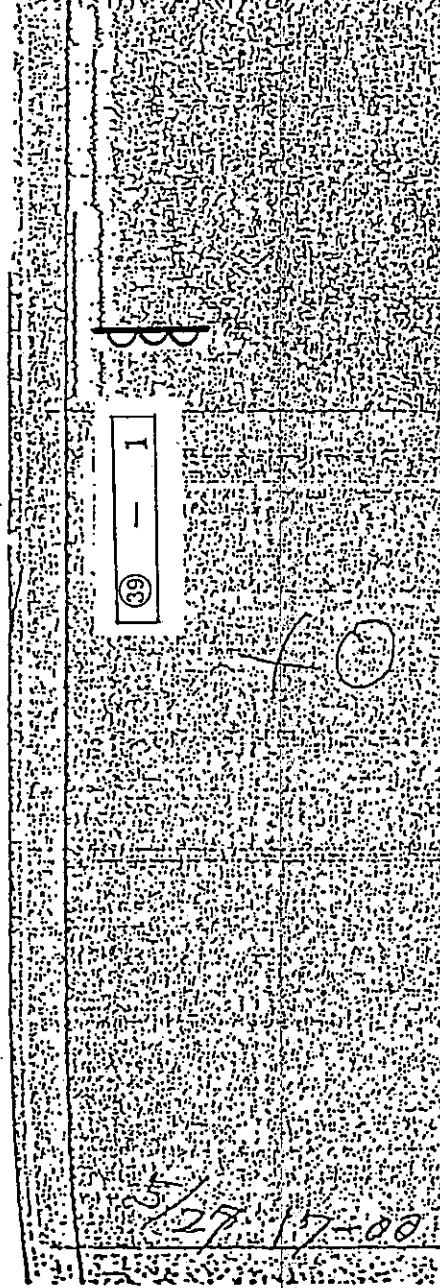


活撓曲 , 測線 h

2/2

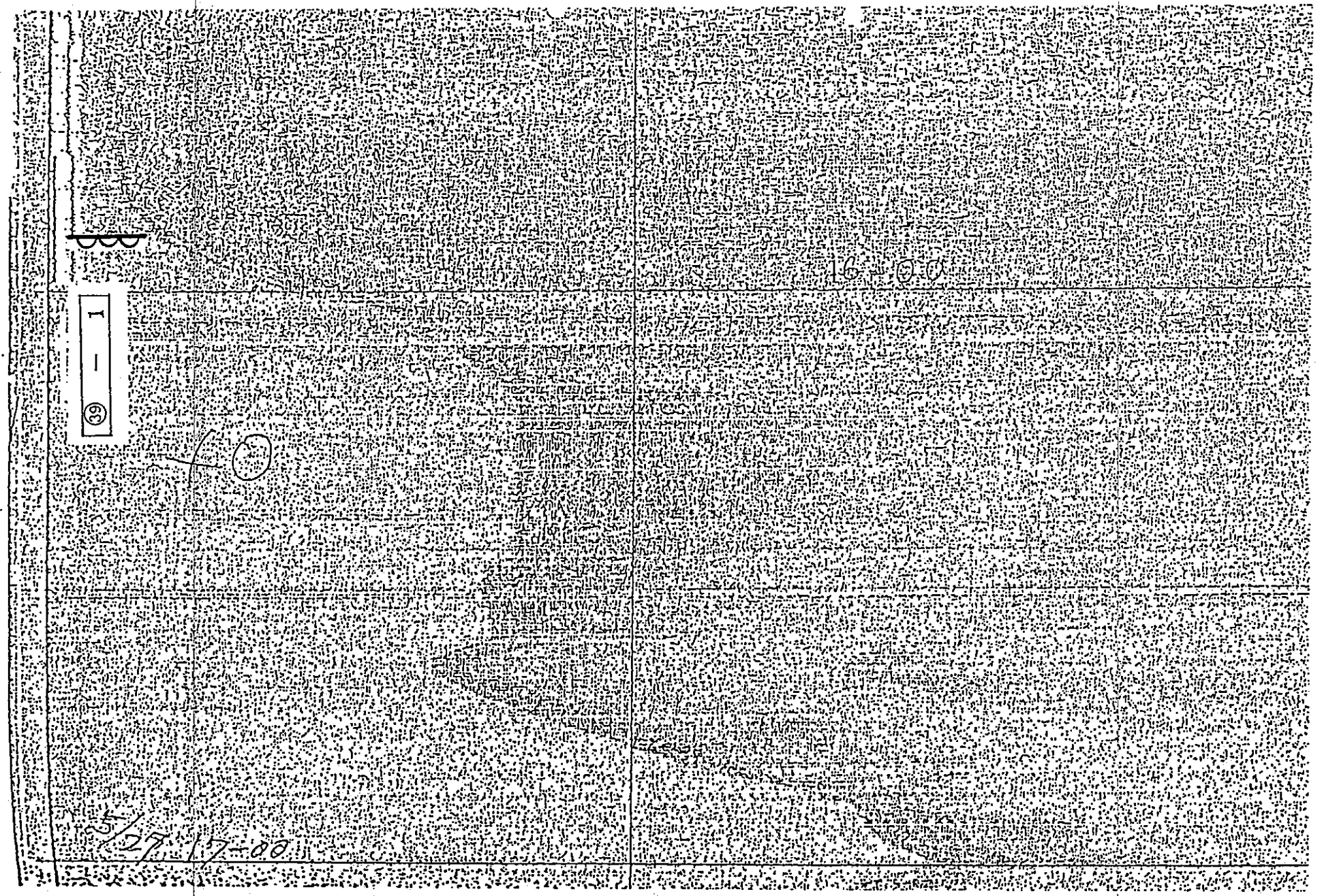


活断層研究会
(海上保安庁)



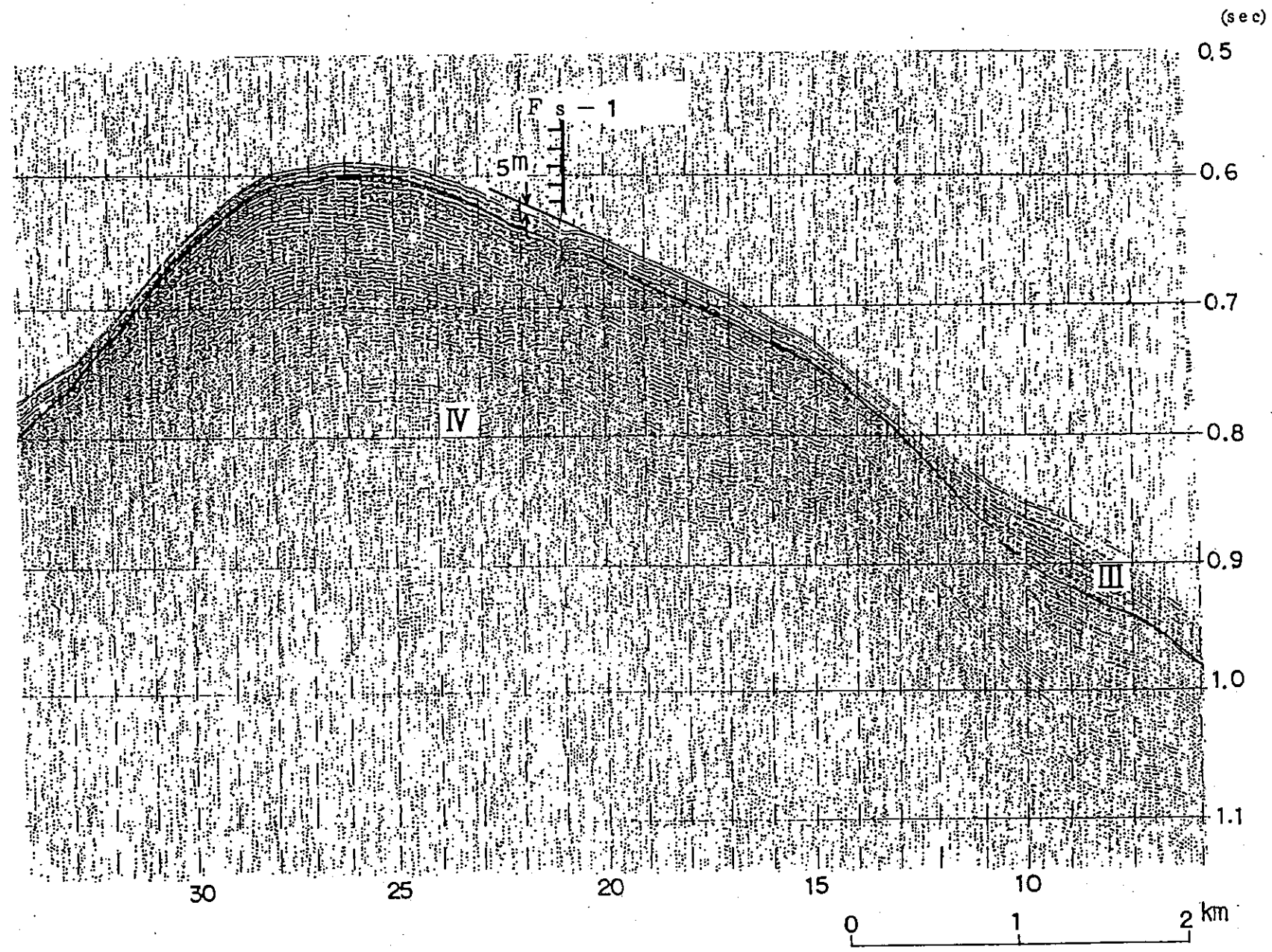
0 1 2 km

活断層研究会
(海上保安庁)

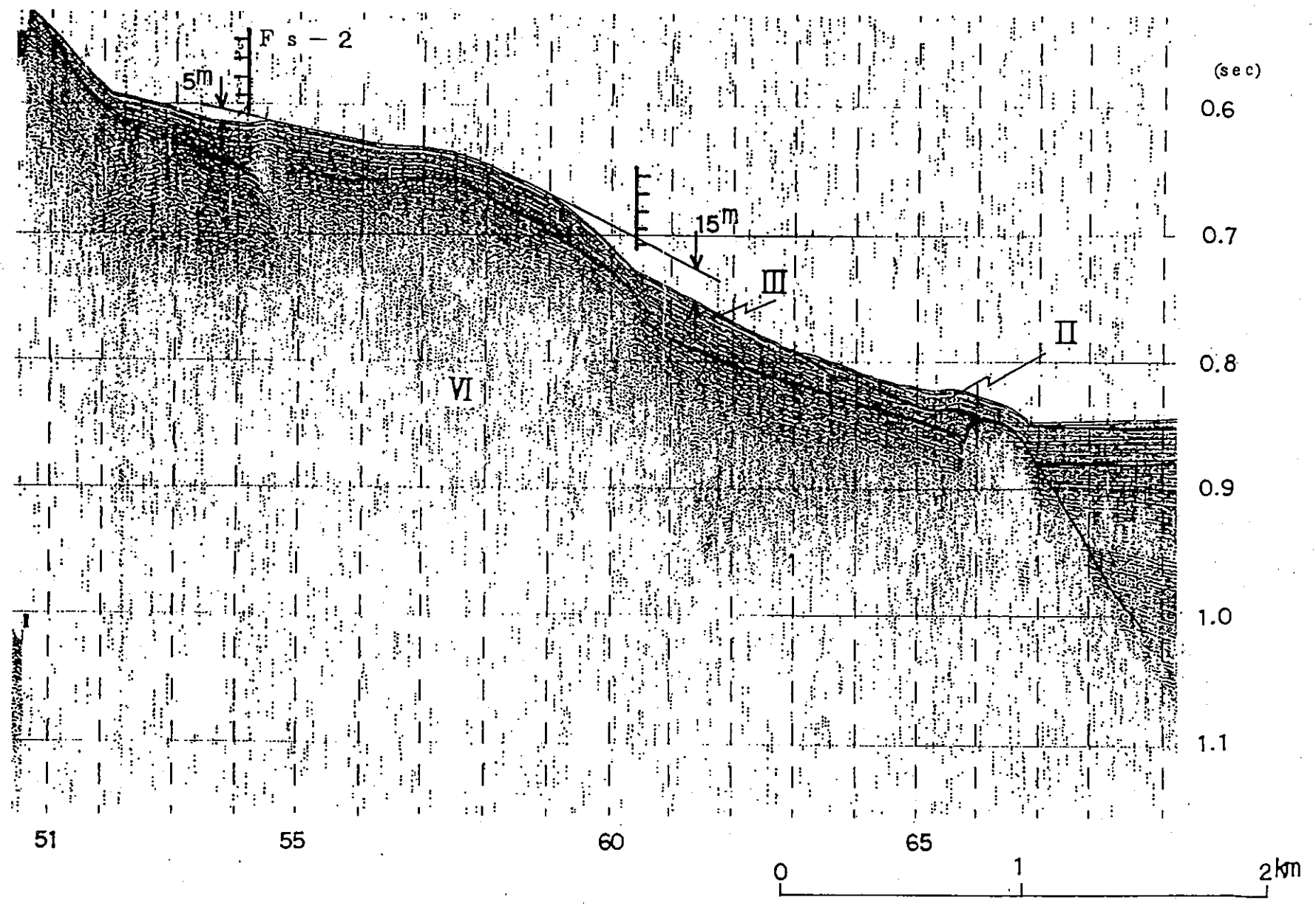


活撓曲，測線 i

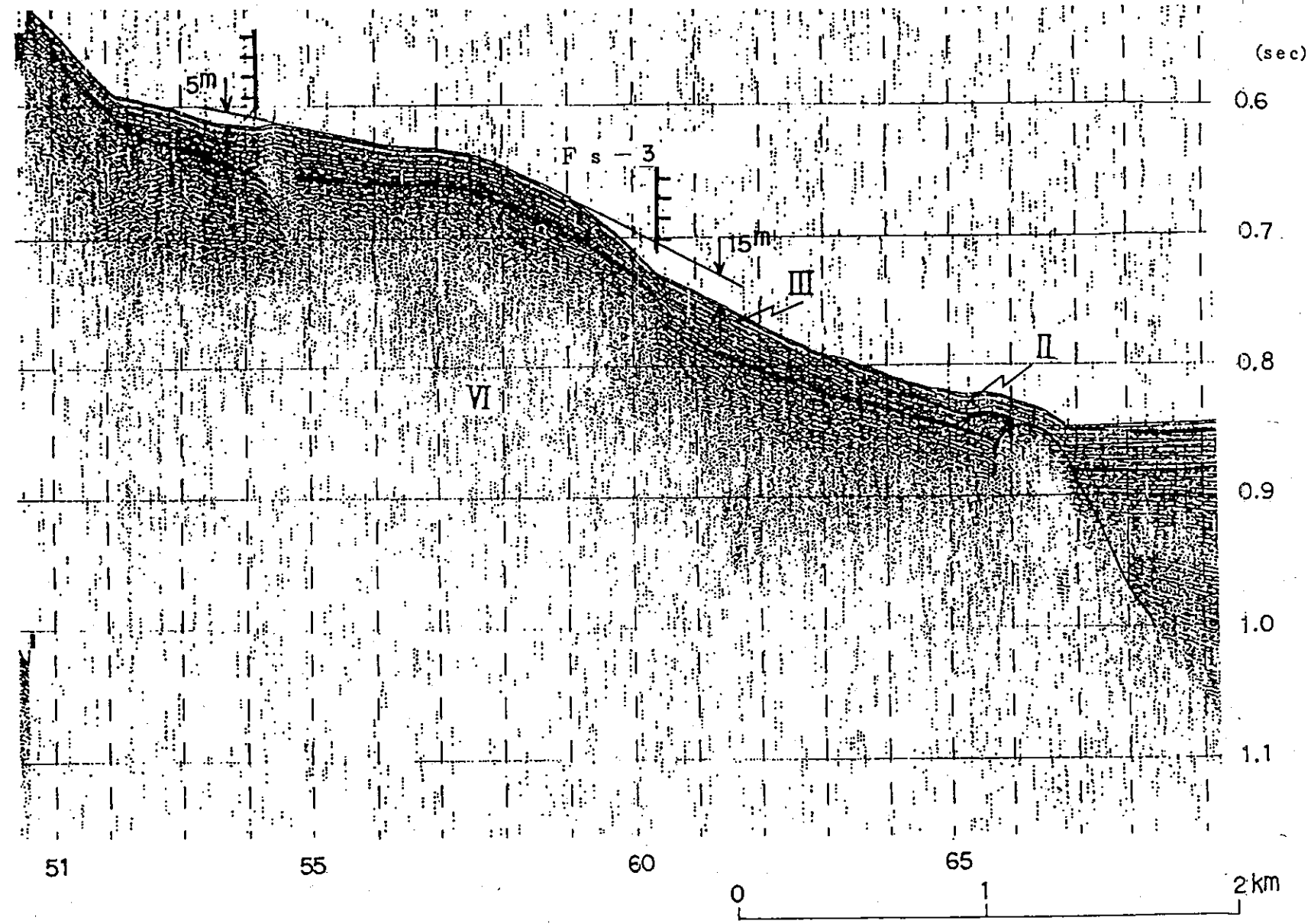
調査結果から推定される断層
(Fs-1～Fs-7)



Fs - 1, 測線 2



Fs - 2, 測線 j



Fs - 3, 測線 j